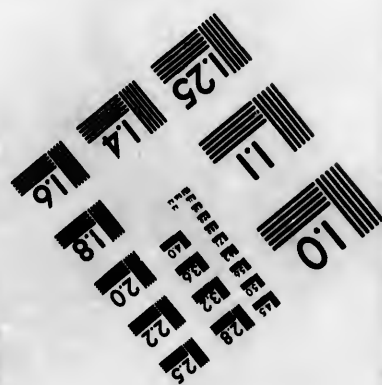
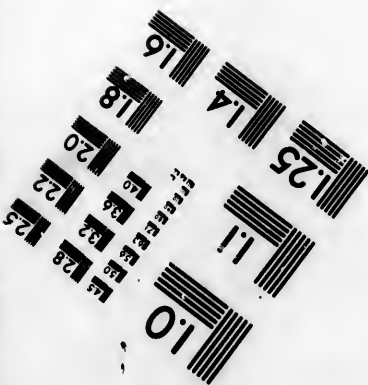
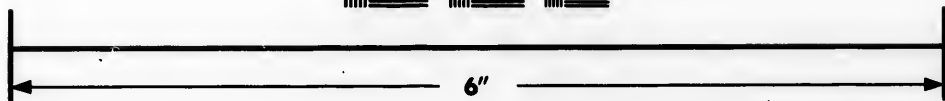
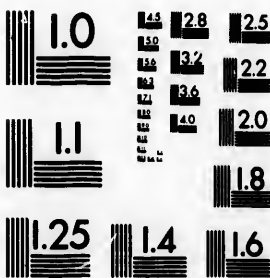


**IMAGE EVALUATION
TEST TARGET (MT-3)**



**Photographic
Sciences
Corporation**

23 WEST MAIN STREET
WEBSTER, N.Y. 14589
(716) 872-4503

1.8
2.0
2.2
2.5
2.8
3.2
3.6
4.0

**CIHM/ICMH
Microfiche
Series.**

**CIHM/ICMH
Collection de
microfiches.**



Canadian Institute for Historical Microreproductions / Institut canadien de microreproductions historiques

01
03
07

© 1984

Technical and Bibliographic Notes/Notes techniques et bibliographiques

The Institute has attempted to obtain the best original copy available for filming. Features of this copy which may be bibliographically unique, which may alter any of the images in the reproduction, or which may significantly change the usual method of filming, are checked below.

L'Institut a microfilmé le meilleur exemplaire qu'il lui a été possible de se procurer. Les détails de cet exemplaire qui sont peut-être uniques du point de vue bibliographique, qui peuvent modifier une image reproduite, ou qui peuvent exiger une modification dans la méthode normale de filmage sont indiqués ci-dessous.

- Coloured covers/
Couverture de couleur
- Covers damaged/
Couverture endommagée
- Covers restored and/or laminated/
Couverture restaurée et/ou pelliculée
- Cover title missing/
Le titre de couverture manque
- Coloured maps/
Cartes géographiques en couleur
- Coloured ink (i.e. other than blue or black)/
Encre de couleur (i.e. autre que bleue ou noire)
- Coloured plates and/or illustrations/
Planches et/ou illustrations en couleur
- Bound with other material/
Relié avec d'autres documents
- Tight binding may cause shadows or distortion
along interior margin/
La reliure serrée peut causer de l'ombre ou de la
distortion le long de la marge intérieure
- Blank leaves added during restoration may
appear within the text. Whenever possible, these
have been omitted from filming/
Il se peut que certaines pages blanches ajoutées
lors d'une restauration apparaissent dans le texte,
mais, lorsque cela était possible, ces pages n'ont
pas été filmées.
- Additional comments:/
Commentaires supplémentaires:

- Coloured pages/
Pages de couleur
- Pages damaged/
Pages endommagées
- Pages restored and/or laminated/
Pages restaurées et/ou pelliculées
- Pages discoloured, stained or foxed/
Pages décolorées, tachetées ou piquées
- Pages detached/
Pages détachées
- Showthrough/
Transparence
- Quality of print varies/
Qualité inégale de l'impression
- Includes supplementary material/
Comprend du matériel supplémentaire
- Only edition available/
Seule édition disponible
- Pages wholly or partially obscured by errata
slips, tissues, etc., have been refilmed to
ensure the best possible image/
Les pages totalement ou partiellement
obscurcies par un feuillet d'errata, une pelure,
etc., ont été filmées à nouveau de façon à
obtenir la meilleure image possible.

This item is filmed at the reduction ratio checked below/
Cz document est filmé au taux de réduction indiqué ci-dessous.

10X	14X	18X	22X	26X	30X
<input type="checkbox"/>	<input type="checkbox"/>	<input type="checkbox"/>	<input checked="" type="checkbox"/>	<input type="checkbox"/>	<input type="checkbox"/>
12X	16X	20X	24X	28X	32X

The copy filmed here has been reproduced thanks to the generosity of:

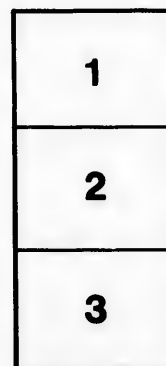
Library of the Public
Archives of Canada

The images appearing here are the best quality possible considering the condition and legibility of the original copy and in keeping with the filming contract specifications.

Original copies in printed paper covers are filmed beginning with the front cover and ending on the last page with a printed or illustrated impression, or the back cover when appropriate. All other original copies are filmed beginning on the first page with a printed or illustrated impression, and ending on the last page with a printed or illustrated impression.

The last recorded frame on each microfiche shall contain the symbol \rightarrow (meaning "CONTINUED"), or the symbol ∇ (meaning "END"), whichever applies.

Maps, plates, charts, etc., may be filmed at different reduction ratios. Those too large to be entirely included in one exposure are filmed beginning in the upper left hand corner, left to right and top to bottom, as many frames as required. The following diagrams illustrate the method:



L'exemplaire filmé fut reproduit grâce à la générosité de:

La bibliothèque des Archives
publiques du Canada

Les images suivantes ont été reproduites avec le plus grand soin, compte tenu de la condition et de la netteté de l'exemplaire filmé, et en conformité avec les conditions du contrat de filmage.

Les exemplaires originaux dont la couverture en papier est imprimée sont filmés en commençant par le premier plat et en terminant soit par la dernière page qui comporte une empreinte d'impression ou d'illustration, soit par le second plat, selon le cas. Tous les autres exemplaires originaux sont filmés en commençant par la première page qui comporte une empreinte d'impression ou d'illustration et en terminant par la dernière page qui comporte une telle empreinte.

Un des symboles suivants apparaîtra sur la dernière image de chaque microfiche, selon le cas: le symbole \rightarrow signifie "A SUIVRE", le symbole ∇ signifie "FIN".

Les cartes, planches, tableaux, etc., peuvent être filmés à des taux de réduction différents. Lorsque le document est trop grand pour être reproduit en un seul cliché, il est filmé à partir de l'angle supérieur gauche, de gauche à droite, et de haut en bas, en prenant le nombre d'images nécessaire. Les diagrammes suivants illustrent la méthode.

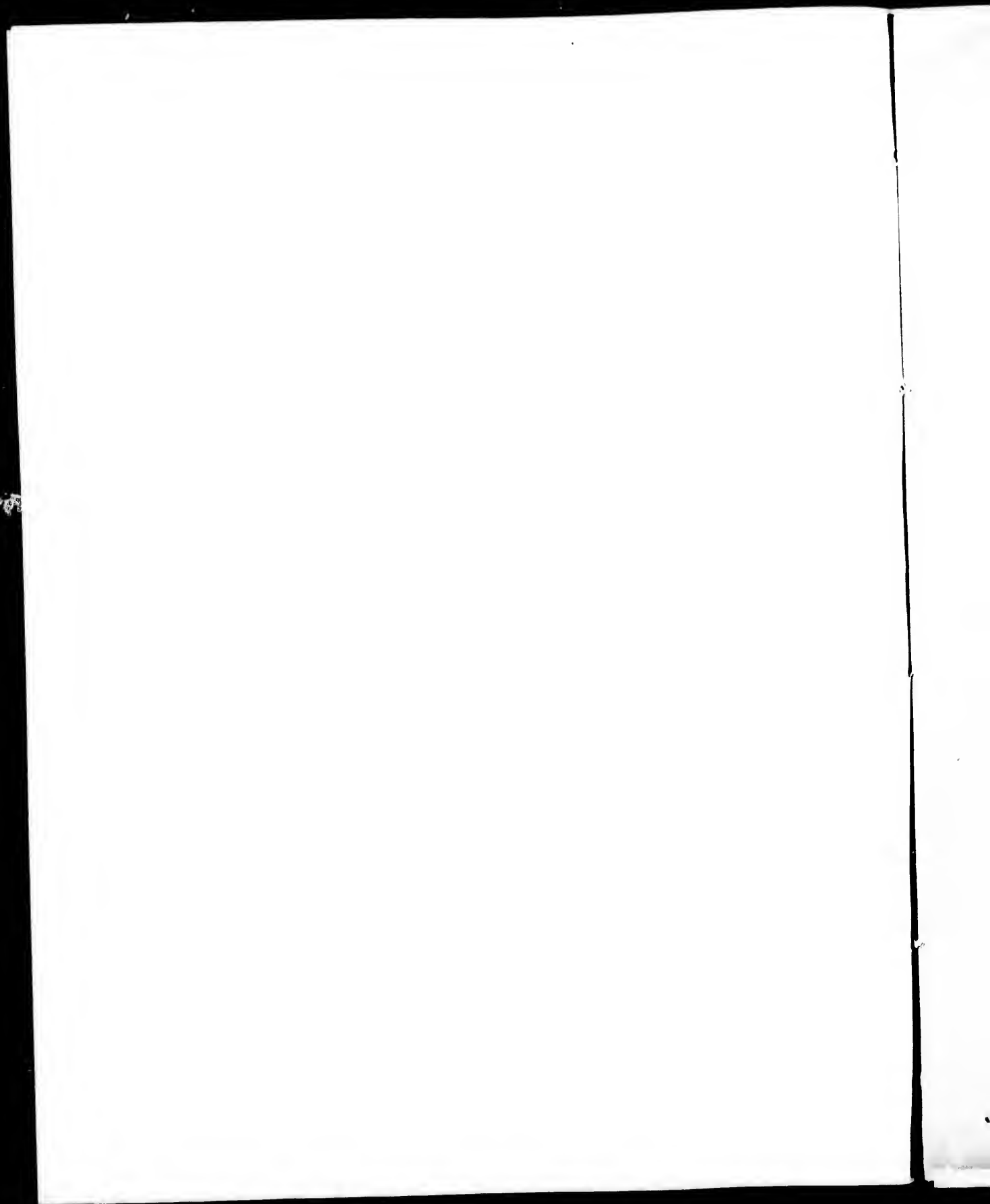
e
étails
s du
modifier
r une
image

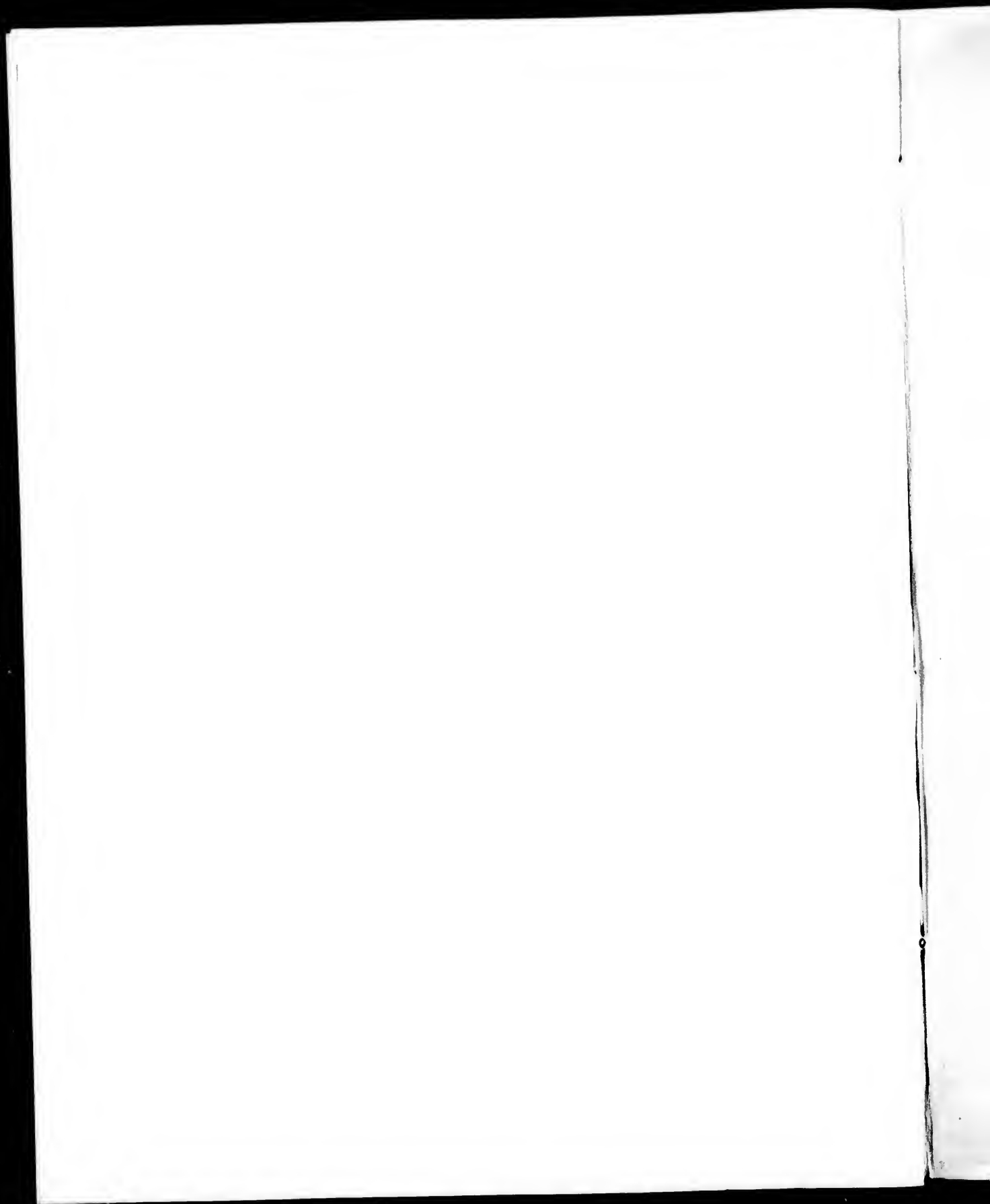
es

errata
to

e pelure,
on à







ON INTERNAL COMMUNICATIONS IN THE CANADAS.

It will be found very convenient to the public, that the proprietor of Goudie's wharf has permitted a passage through the Commercial Buildings for passengers only, which has been taken by the joint Companies of St. Lawrence and the Tow Boat Company, whose office is now held at No. 7, Commercial Buildings. These properties by this accommodation have reverted to their original bustling scene of business, and bid fair to rise in value with that of any other in the Lower Town.

If to this were added a little more energy in promoting the present extensive interior navigation proved by the voyage of the Quebec Barge, burthen 100 tons, how soon might not the British capitalist turn his views to this rising British country, instead of allowing himself to be swindled out of Millions in a foreign land, where no community of interest exists.

Let the opinion of one who has had experience and knowledge of the difficulties so much magnified respecting the navigation of the Rapids of the St. Lawrence, be offered in contradiction to the wasteful expenditure on canals and the loss of time in stead of profitable employment of capital on a mode of conveyance known by any one of common sense to be quite practicable.

"The question of the practicability of constructing vessels which might be capable of stemming the rapids of the St. Lawrence, was frequently discussed during the late war—and now that the power of steam can be applied in aid of such vessels, I cannot entertain any doubt as to the complete suc-

cess of your barge project, if connected at certain difficult points with the assistance of the steam towing vessels and the very simple and ingenious machinery which you have suggested. Your plan appears to me to possess all the advantages which you have described, not only as regards the emigrant in his cheap and commodious conveyance with his family and effects to the point at which his labours are to commence, but in a still higher degree as respects the merchant, in the transmission to the interior of European goods, and return cargoes of agricultural produce—while to the state as a nursery of a hardy and experienced race of internal navigators, at all times available for defensive purposes (an object to which a certain degree of importance must ever attach) the prospective benefits are evidently such as ought in my opinion to secure for your plan the approbation and encouragement, if not the aid and support of the Government, I shall be gratified if the expression of these opinions should be satisfactory or useful to you."

Editors of Newspapers who desire that such improvements should be put down, as they might tend to prove that all the opposition that has been raised against them, is found to proceed from "false views of interest," or want of intelligence as to their practicability, bearing and extent, will please not to copy these remarks.

Q.

