



Paraît le lundi matin

Published every Monday morning

Abonnements \$2 par an
Subscriptions a year

Payables d'avance
Payable in advance

MUNICIPAL

Gazette

MUNICIPALE

DE—OF

Montreal

Organe officiel de la Corporation de la Ville de Montréal
Official organ of the Corporation of the City of Montreal
CANADA

Troisième année No. 2
Third year

12 Février 1908
February

Les abonnements sont reçus chez
Le Trésorier de la Ville de Montréal,
Hôtel de Ville

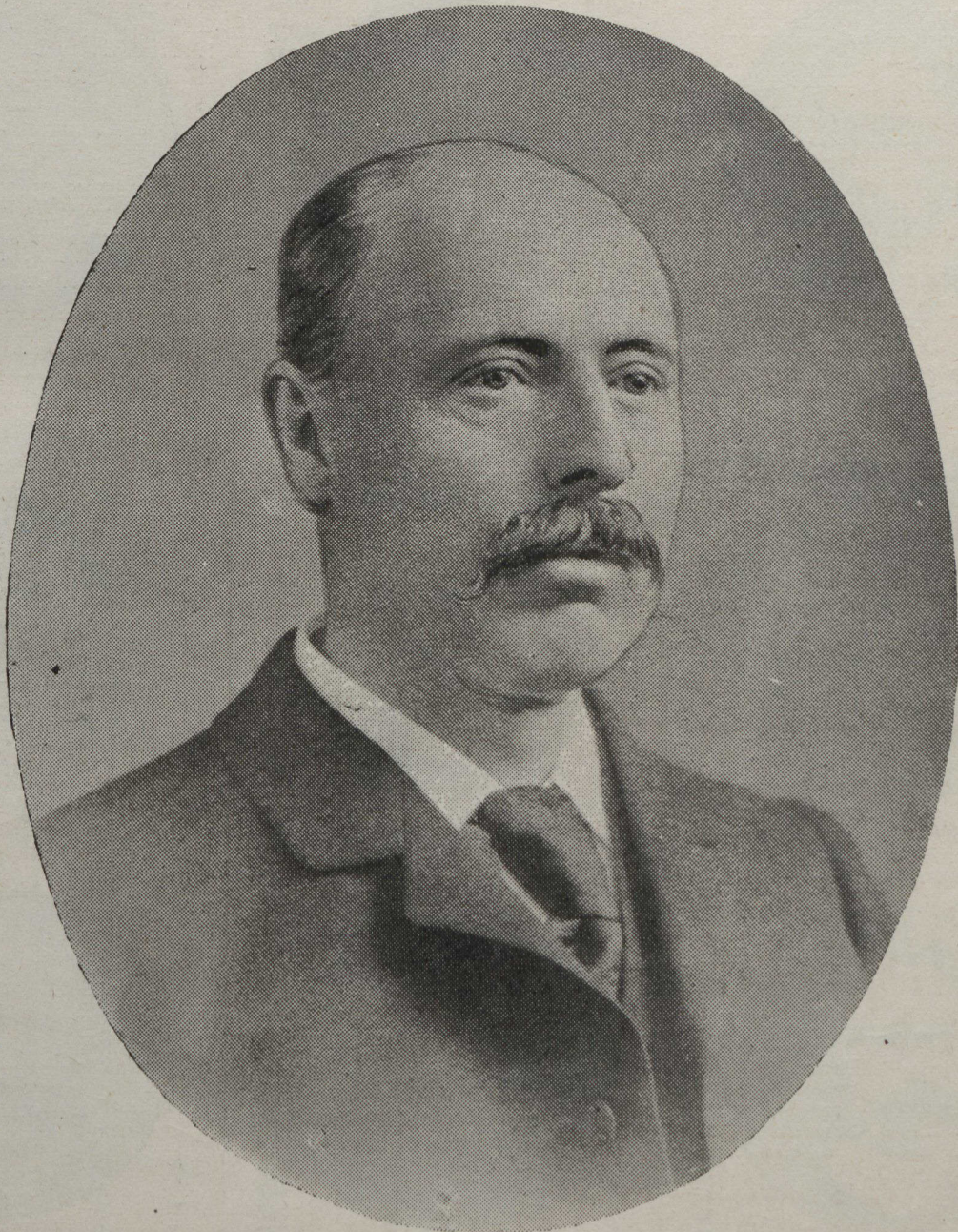
Les autres communications doivent
être adressées au directeur de
"LA GAZETTE MUNICIPALE"
Hôtel de Ville

Forward subscriptions to
The City Treasurer of Montreal
City Hall

All other communications should be
addressed to the managing-editor of
"The Municipal Gazette"
City Hall

TELEPHONE : MAIN 4240

Le Président du Conseil Municipal de 1906-08 — The President of City Council for 1906-08



Son Honneur
His Worship

H. A. EKERS

Maire
Mayor

Né—Montréal, 1855—Born

Manufacturier — Manufacturer

RAPPORT DES ELECTIONS ELECTION RETURNS

Jedi, 1er février. — Thursday, 1st February

NOMBRE D'ELECTEURS

NUMBER OF ELECTORS

Quartiers.	Qualifiés. Qualified.	Non-qualifiés. Disqualified.	Total.	Wards.
Est ..	640	207	847	East
Centre ..	926	268	1,194	Centre
Ouest ..	1,203	301	1,504	West
Ste-Anne ..	3 575	2,125	5,700	St. Ann's
St-Joseph ..	2 882	1,910	4,792	St. Joseph's
St-André ..	2 270	456	2,726	St. Andrew's
St-Georges ..	2 788	675	3 463	St. George's
St-Louis ..	4,052	1,953	6 005	St. Louis
St-Laurent ..	3,390	1,529	4,919	St. Lawrence
Papineau ..	4,007	3,230	7, 237	Papineau
Ste-Marie ..	2 060	1,712	3,772	St. Mary's
St-Jacques ..	2,308	1,254	3,562	St. James
LaFontaine ..	3 435	1,916	5,351	LaFontaine
Hochelaga ..	1,592	803	3 395	Hochelaga
St-Jean-Baptiste ..	3 168	1,424	4,592	St. Jean Baptiste
Duvernay ..	1,684	851	2,535	Duvernay
St-Gabriel ..	2 747	1,332	4 079	St. Gabriel's
St-Denis ..	3 002	60	3,902	St. Denis
St-Henri ..	6,925	..	6 925	St. Henri
Ste-Cunégonde ..	2,409	..	2 409	Ste. Cunegonde
Total ..	55 963	22,006	77,969	Total

MAIRIE.—MAYORALTY.

Est.—East.

	Doran.	Ekers.
" 2—	20	70
" 2—	10	39
" 3—	13	66
" 4—	24	48
" 5—	23	53
" 6—	14	30
	104	306

Centre.

Poll No	Doran.	Ekers.
1—	17	44
2—	19	45
3—	19	52
4—	21	68
5—	14	46
6—	20	50
	110	305

Ouest.—West.

Poll No	Doran.	Ekers.
1—	19	20
2—	21	32
3—	11	23
4—	9	29
5—	8	18
6—	10	47
7—	6	30
8—	13	40
9—	9	23
	106	262

Sainte-Anne.—St. Ann.

Poll No	Doran.	Ekers.
1—	35	45
2—	31	45
3—	73	31
4—	41	31
5—	56	49
6—	75	39
7—	74	14
8—	76	44
9—	109	26
10—	109	28
11—	74	41
12—	47	37
13—	70	42
14—	29	22
15—	93	25
16—	98	21
17—	83	36
18—	41	40
19—	24	41
20—	28	67
21—	60	36
22—	32	34
	1,358	800

Saint-Joseph.

Poll No	Doran.	Ekers.
1—	18	45
2—	32	52
3—	49	45
4—	32	56
5—	57	47
6—	28	37
7—	48	42
8—	35	31
9—	67	42
10—	43	59

Poll No	Doran.	Ekers.
11—	59	48
12—	78	38
13—	42	30
14—	53	44
15—	49	42
16—	40	54
17—	31	36
18—	36	43
	797	797

Saint-André.—St. Andrew.

Poll No	Doran.	Ekers.
1—	39	35
2—	49	26
3—	28	22
4—	26	29
5—	13	26
6—	12	25
7—	15	33
8—	19	31
9—	12	33
10—	22	47
11—	14	49
12—	21	44
13—	14	44
14—	14	21
15—	9	37
	307	502

Saint-Georges.

Poll No	Doran.	Ekers.
1—	21	26
2—	33	34
3—	18	26
4—	22	14
5—	16	33
6—	14	22
7—	33	51

Les Echevins du Conseil de 1906-8 — Adermen of the Council for 1906.8

Est—East



No. 1.—L.-A. LAPOINTE
Né—Contreccœur (Verchères), 1860—Born
Courtier d'Immeubles—Real Estate Agent

Centre



No. 1.—G. DESERRES
Né—St-Ambroise (Joliette), 1855—Born
Financier—Financial Agent

Ouest—West



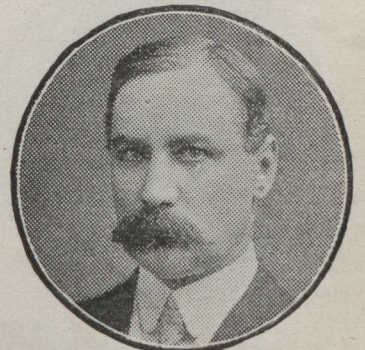
Ro. 1.—C.-B. CARTER
Né—Montréal, 1844—Born
Avocat, C.R.—Advocate, K.C.



No. 2.—J.-C.-E. LEVY
Né—Montréal, 1855—Born
Notaire—Notary

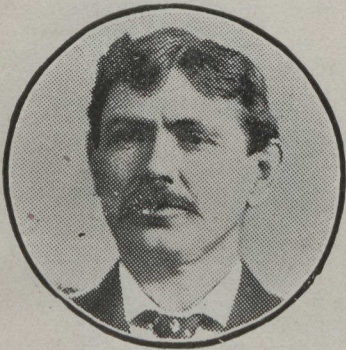


No. 2.—HONORÉ MERCIER
Né—St-Hyacinthe, 1875—Born
Avocat—Barrister



No. 2.—W.-J. WHITE
Né—Peterborough, Ont., 1861—Born
Avocat—Barrister

Sainte-Anne—St. Ann



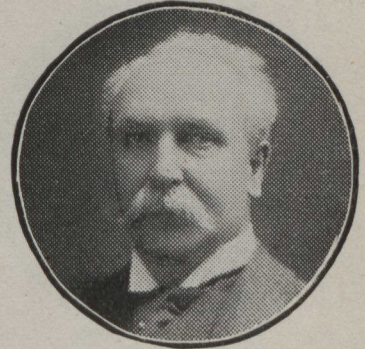
No. 1.—D. GALLERY
Né—Slieredooley (Clare), 1859—Born
Marchand—Merchant

Saint-Joseph



No. 1.—J.-B.-A. MARTIN
Né—Ste-Geneviève (Montréal), 1850—Born
Bourgeois—Gentleman

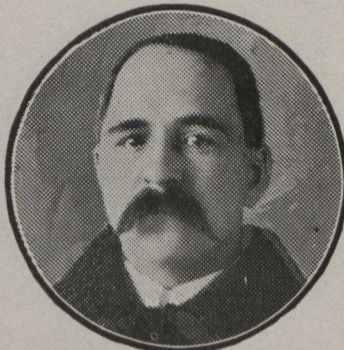
Saint-André—St. Andrew



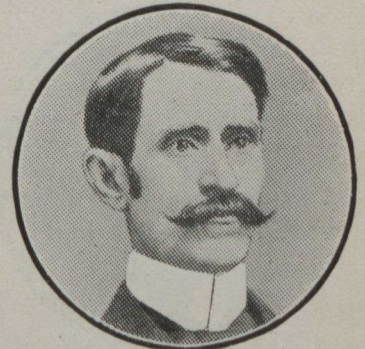
No. 1.—GEO.-W. SADLER
Né—Montréal, 1852—Born
Manufacturier—Manufacturer



No. 2.—THOMAS O'CONNELL
Né—Montréal, 1867—Born
Entrepreneur—Contractor



No. 2.—J.-H. NAULT
Né—St-Maurice (Champlain), 1860—Born
Pharmacien—Druggist



No. 2.—J. WARD
Né—Richelieu, 1851—Born
Marchand—Merchant

Poll No 8—	21	48
" 9—	18	32
" 10—	13	42
" 11—	21	45
" 12—	19	47
" 13—	12	46
" 14—	11	38
" 15—	26	65
" 16—	15	43
" 17—	18	53
" 18—	15	64
" 19—	10	33
	<hr/> 356	<hr/> 762

Saint-Laurent.—St. Lawrence.

Poll No	Doran.	Ekers.
1—	26	49
2—	47	51
3—	32	49
4—	46	56
5—	34	40
6—	48	38
7—	17	40
8—	32	50
9—	26	31
10—	29	31
11—	37	51
12—	28	61
13—	26	40
14—	24	47
15—	34	46
16—	29	67
17—	25	32
18—	27	52
19—	22	66
20—	22	39
21—	15	36
22—	37	67
23—	39	71
	<hr/> 702	<hr/> 1,110

Saint-Louis.

Poll No	Doran.	Ekers.
1—	27	63
2—	34	63
3—	24	59
4—	13	63
5—	24	68
6—	17	52
7—	27	85
8—	34	77
9—	23	68
10—	18	53
11—	38	80
12—	42	71
13—	29	45
14—	26	48
15—	17	42
16—	28	40
17—	21	47
18—	28	45
19—	30	46
20—	32	48
21—	34	58
22—	36	48
23—	41	71
24—	33	47
25—	25	37
26—	33	50
	<hr/> 674	<hr/> 1,474

Saint-Jacques.—St. James.

Poll No	Doran.	Ekers.
1—	43	72
2—	35	60
3—	44	60
4—	41	67
5—	32	62
6—	26	60
7—	36	86
8—	28	67
9—	37	53

Poll No 10—	29	67
" 11—	54	81
" 12—	40	71
" 13—	25	57
" 14—	22	55
	<hr/> 498	<hr/> 927

Papineau.

Poll No	Doran.	Ekers.
1—	26	24
2—	31	23
3—	27	26
4—	35	38
5—	14	38
6—	27	33
7—	25	40
8—	32	40
9—	33	41
10—	27	46
11—	31	28
12—	25	28
13—	22	32
14—	17	28
15—	24	48
16—	13	34
17—	27	47
18—	20	43
19—	30	49
20—	21	37
21—	18	28
22—	15	51
23—	27	40
24—	22	34
25—	23	37
26—	11	30
	<hr/> 623	<hr/> 943

Sainte-Marie.—St. Mary.

Poll No	Doran.	Ekers.
1—	18	35
2—	24	57
3—	22	30
4—	17	23
5—	30	38
6—	18	19
7—	29	31
8—	43	28
9—	39	45
10—	32	7
11—	45	26
12—	49	25
13—	27	32
	<hr/> 393	<hr/> 396

LaFontaine.

Poll No	Doran.	Ekers.
1—	9	26
2—	27	43
3—	20	42
4—	25	27
5—	17	40
6—	23	38
7—	31	27
8—	26	37
9—	21	33
10—	19	36
11—	11	34
12—	22	41
13—	9	25
14—	8	27
15—	24	41
16—	39	24
17—	19	38
18—	33	49
19—	15	46
20—	13	30
21—	12	21
22—	23	31
23—	20	33
	<hr/> 466	<hr/> 789

Saint-Jean-Baptiste.

Poll No	Doran.	Ekers.
1—	56	68
2—	40	83
3—	43	75
4—	33	96
5—	56	57
6—	41	62
7—	41	67
8—	56	85
9—	22	55
10—	27	39
11—	22	50
12—	32	40
13—	24	46
14—	37	72
15—	37	50
16—	41	48
17—	24	27
18—	24	44
19—	30	40
20—	35	49
21—	24	34
	<hr/> 745	<hr/> 1,187

Saint-Gabriel.

Poll No	Doran.	Ekers.
1—	41	23
2—	41	17
3—	32	28
4—	66	26
5—	57	25
6—	60	11
7—	36	23
8—	36	25
9—	35	12
10—	33	41
11—	27	20
12—	40	36
13—	34	30
14—	35	44
15—	33	23
16—	15	25
17—	29	33
18—	22	37
	<hr/> 672	<hr/> 479

Hochelaga.

Poll No	Doran.	Ekers.
1—	34	32
2—	27	58
3—	64	57
4—	51	31
5—	83	46
6—	41	42
7—	45	32
8—	90	56
9—	45	43
10—	42	32
11—	56	40
	<hr/> 578	<hr/> 460

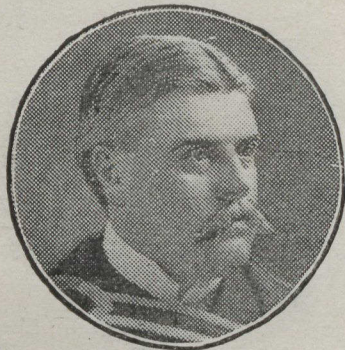
Saint-Denis.

Poll No	Doran.	Ekers.
1—	26	22
2—	26	32
3—	37	41
4—	45	40
5—	23	46
6—	52	36
7—	41	39
8—	36	44
9—	40	72
10—	54	31
11—	29	48
12—	47	51
13—	63	72
14—	24	30
15—	28	30
16—	35	21

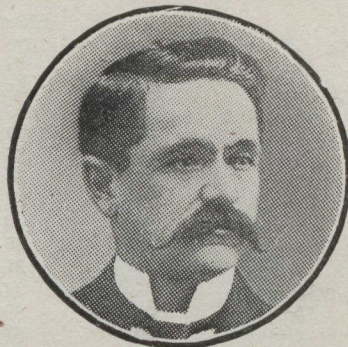
Saint-Georges

Saint-Louis

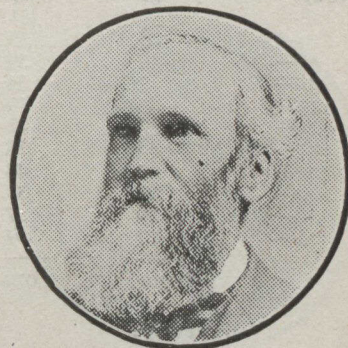
Saint-Laurent—St. Lawrence



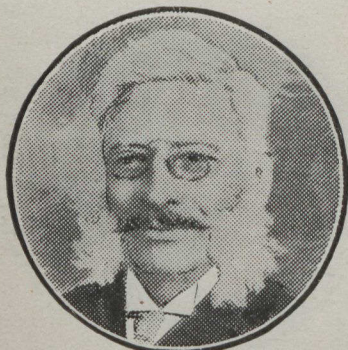
No. 1.—H.-B. YATES
Né—Montréal, 1865—Born
Médecin—Physician



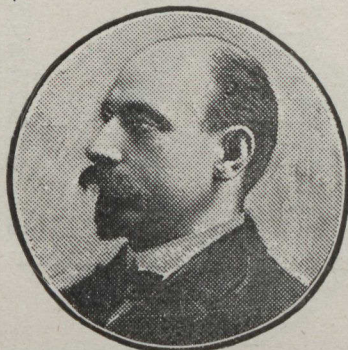
No. 1.—L. PAYETTE
Né—Montréal, 1854—Born
Entrepreneur—Contractor



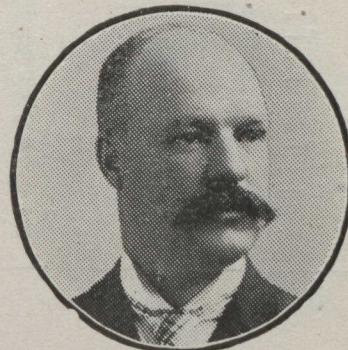
No. 1.—J.-B. CLEARIHUE
Né—Québec, 1849—Born
Bourgeois—Gentleman



No. 2.—I.-H. STEARNS
Né—New Hampshire (U. S. A.), 1837—Born
Bourgeois—Gentleman



No. 2.—J.-P. GADBOIS
Né—St-Urbain (Châteauguay), 1868—Born
Médecin—Physician



No. 2.—JAS. ROBINSON
Né—Montréal, 1856—Born
Marchand—Merchant

Papineau

Sainte-Marie—St. Mary

Saint-Jacques—St. James



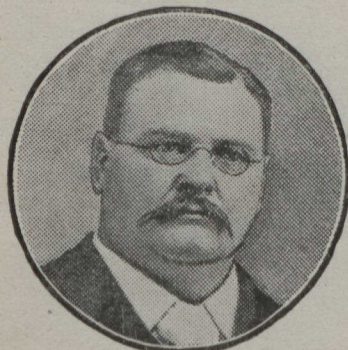
No. 1.—M. MARTIN
Né—Montréal, 1869—Born
Manufacturier—Manufacturer



No. 1.—E.-F. LARIVIÈRE
Né—St-Bruno (Chambly), 1862—Born
Marchand—Merchant



No. 1.—N. GIROUX
Né—Montréal, 1863—Born
Libraire—Stationer



No. 2.—I. LAVIOLETTE
Né—Lavaltrie, 1860—Born
Médecin—Physician



No. 2.—N. SEGUIN
Né—Rigaud, 1867—Born
Epicier—Grocer



No. 2.—C. ROBILLARD
Né—Lavaltrie (Berthier), 1850—Born
Manufacturier—Manufacturer

Poll No 17—	30	27
“ 18—	55	51
“ 19—	28	35
“ 20—	33	30
“ 21—	45	34
“ 22—	33	19
“ 23—	37	27
“ 24—	48	35
“ 25—	42	43
“ 26—	26	31
“ 27—	26	37
“ 28—	27	64
	<u>1,050</u>	<u>1,072</u>

Duvernay.

Poll No	Doran	Ekers.
1—	41	66
2—	36	42
3—	29	47
4—	52	63
5—	23	46
6—	25	48
7—	47	51
8—	31	38
9—	40	50
10—	34	46
11—	52	83
12—	29	41
	<u>439</u>	<u>621</u>

Saint-Henri.—St. Henry.

Poll No	Doran.	Ekers.
1—	40	61
2—	36	56
3—	50	85
4—	73	85
5—	58	60
6—	50	35
7—	45	38
8—	60	71
9—	52	60
10—	47	40
11—	50	31
12—	75	34
13—	60	59
14—	69	37
15—	67	37
16—	43	42
17—	53	52
18—	49	31
19—	68	39
20—	46	50
21—	45	57
22—	39	38
23—	32	56
24—	66	73
25—	49	46
26—	24	54
27—	40	47
28—	56	73
29—	44	72
30—	41	66

Poll No 31—	38	39
“ 32—	42	58
“ 33—	44	55
“ 34—	31	50
“ 35—	42	53
“ 36—	41	47
“ 37—	41	47
“ 38—	44	43
“ 39—	48	41
“ 40—	61	77
“ 41—	41	57
	<u>2,000</u>	<u>2,152</u>

Sainte-Cunégonde.

Poll No	Doran.	Ekers.
1—	49	58
2—	43	52
3—	41	32
4—	44	59
5—	53	59
6—	49	49
7—	58	56
8—	49	67
9—	65	67
10—	49	58
11—	44	72
12—	62	59
13—	63	67
14—	74	91
	<u>743</u>	<u>846</u>

MAIRIE. — MAYORALTY.

RECAPITULATION.

QUARTIERS.	DORAN.	EKERS.	WARDS.	DORAN.	EKERS.
Est	104	306	East	104	306
Centre	110	305	Centre	110	305
Ouest	106	262	West	106	262
Sainte-Anne	1,358	800	St. Ann	1,358	800
Saint-Joseph	797	797	St. Joseph	797	797
Saint-André	307	502	St. Andrew	307	502
Saint-Georges	356	762	St. George	356	762
Saint-Laurent	702	1,110	St. Lawrence	702	1,110
Saint-Louis	674	1,474	St. Louis	674	1,474
Saint-Jacques	498	927	St. James	498	927
Papineau	623	943	Papineau	623	943
Sainte-Marie	393	396	St. Mary	393	396
LaFontaine	466	789	LaFontaine	466	789
Saint-Jean-Baptiste	745	1,187	St. Jean-Baptiste	745	1,187
Saint-Gabriel	672	479	St. Gabriel	672	479
Hochelaga	578	469	Hochelaga	578	469
Saint-Denis	1,050	1,072	St. Denis	1,050	1,072
Duvernay	439	621	Duvernay	439	621
Saint-Henri	2,000	2,152	St. Henry	2,000	2,152
Sainte-Cunégonde	743	846	St. Cunégonde	743	846
	<u>12,721</u>	<u>16,199</u>		<u>12,721</u>	<u>16,199</u>
Majorité pour Ekers	3,478		Ekers' Majority	3,478	

LaFontaine



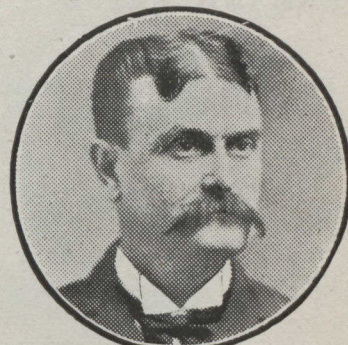
No. 1.—A.-A. LABRECQUE
Né—Lavaltrie, 1852—Born
Rentier—Gentleman

Hochelaga



No. 1.—JOHN BUMBRAY
Né—Hochelaga, 1849—Born
Entrepreneur—Contractor

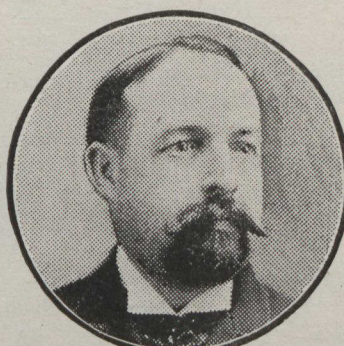
Saint-Jean-Baptiste



No 1.—NOÉ LECLAIRE
Né—St-Jérôme (Terrebonne), 1860—Born
Entrepreneur—Contractor



No. 2.—L.-A. LAVALLÉE
Né—Berthier, 1861—Born
Avocat, C.R.—Advocate, K.C.

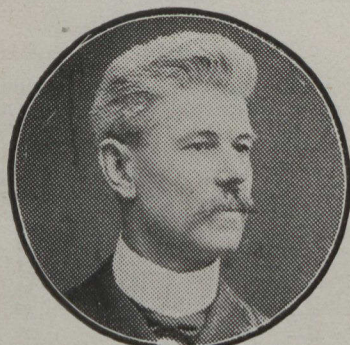


No. 2.—J.-P. MARIN
Né—St-Pie (Bagot), 1864—Born
Médecin—Physician



W.-J. PRCULX
Né—Ste-Geneviève (Laval), 1866—Born
Notaire—Nctary

Duvernay



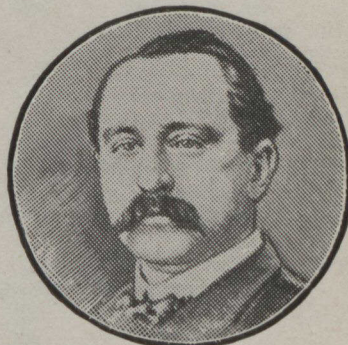
No. 1.—E. MAJOR
Né—St-Vincent de Paul, 1869—Born
Constructeur—Builder

Saint-Gabriel

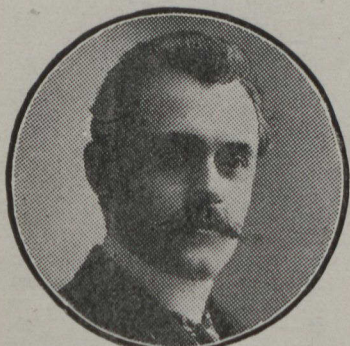


No. 1.—E.-G. DAGENAIS
Né—Ste-Rose (Laval), 1868—Born
Médecin—Physician

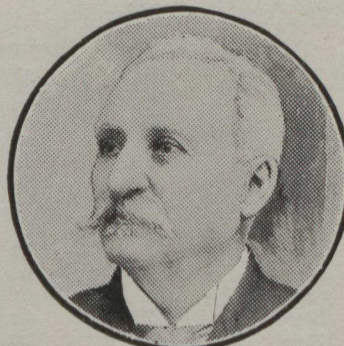
Saint-Denis



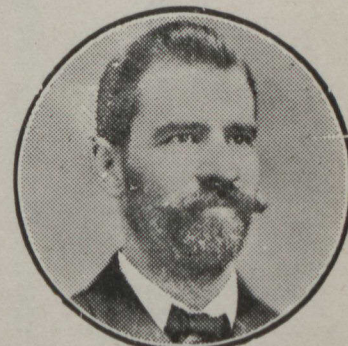
No. 1.—R. HOULÉ
Né—Montréal, 1870—Born
Agent d'immeubles—Real Estate Agent



No. 2.—V. LEVESQUE
Né—Montréal, 1876—Born
Pharmacien—Druggist



No. 2.—R. TURNER
Né—Québec, 1835—Born
Epicier—Grocer



No. 2.—J.-G. DUQUETTE
Né—Lachine, 1868—Born
Entrepreneur—Contractor

**E.CHEVINAGE.
ALDERMANIC RESULTS.**

Est.—East.

Charge No 1. Election par acclamation.
Office No. 1. Election by acclamation.

Charge No 2. — Office No. 2.

	Geoffrion.	Lévy.
Poll No 1—	27	74
" 2—	12	64
" 3—	21	64
" 4—	34	65
" 5—	42	41
" 6—	31	21
	167	329

Majorité pour Lévy, 162.
Majority for Lévy, 162.

Centre.

Charge No 1. — Office No. 1.

	DeSerres.	Mount.
Poll No 1—	60	47
" 2—	65	39
" 3—	84	79
" 4—	55	77
" 5—	35	49
" 6—	64	39
	363	330

Majorité pour DeSerres, 33.
Majority for DeSerres, 33.

Charge No 2. — Office No. 2.

	Dandurand.	Mercier.	St-Denis.
Poll No 1—	16	64	29
" 2—	13	52	37
" 3—	39	76	48
" 4—	10	60	60
" 5—	15	40	29
" 6—	11	44	47
	104	336	250

Majorité pour Mercier, 86.
Majority for Mercier, 86.

Dépôt forfait: Dandurand.
Deposit forfeited: Dandurand.

Sainte-Anne.—St. Ann.

Charge No 1. Election par acclamation.
Office No. 1. Election by acclamation.

Charge No 2. — Office No. 2.

	O'Connell.	Walsh.
Poll No 1—	46	68
" 2—	53	44
" 3—	44	63
" 4—	55	50
" 5—	37	68
" 6—	58	60
" 7—	44	48
" 8—	75	57
" 9—	88	57
" 10—	82	59
" 11—	85	45
" 12—	53	35
" 13—	31	87
" 14—	16	38
" 15—	59	72
" 16—	59	61
" 17—	69	52
" 18—	51	38
" 19—	45	22
" 20—	60	37
" 21—	44	54
" 22—	32	35
	1,186	1,159

Majorité pour O'Connell, 27.
Majority for O'Connell, 27.

Saint-Joseph.

Charge No 1. — Office No. 1.

	Foisy.	Martin.	Stewart.
Poll No 1—	5	66	34
" 2—	8	64	31
" 3—	4	71	31
" 4—	9	73	19
" 5—	20	88	9
" 6—	5	43	22
" 7—	12	64	14
" 8—	6	36	29
" 9—	4	83	24
" 10—	9	92	8
" 11—	9	65	36
" 12—	7	51	60
" 13—	11	55	25
" 14—	9	74	31
" 15—	8	52	37
" 16—	10	70	20
" 17—	4	39	28
" 18—	1	39	46
	141	1,125	504

Majorité pour Martin, 621.
Majority for Martin, 621.

Dépôts forfaits: Stewart et Foisy.
Deposits forfeited: Stewart and Foisy.

Charge No 2. — Office No. 2.

	Malone.	Nault.
Poll No 1—	56	45
" 2—	50	52
" 3—	59	43
" 4—	36	64
" 5—	34	80
" 6—	31	39
" 7—	23	69
" 8—	45	27
" 9—	35	78
" 10—	25	83
" 11—	39	69
" 12—	73	43
" 13—	34	57
" 14—	64	49
" 15—	58	36
" 16—	31	70
" 17—	39	33
" 18—	49	38
	781	975

Majorité pour Nault, 194.
Majority for Nault, 194.

Saint-Georges.

Charge No 1. Election par acclamation.
Office No. 1. Election by acclamation.

Charge No 2. — Office No. 2.

	McLachlan.	Stearns.
Poll No 1—	16	36
" 2—	18	51
" 3—	17	31
" 4—	15	29
" 5—	12	42
" 6—	10	35
" 7—	13	72
" 8—	18	77
" 9—	3	52
" 10—	6	52
" 11—	11	61
" 12—	7	60
" 13—	7	60
" 14—	4	50
" 15—	12	87
" 16—	10	51
" 17—	8	68

Poll No 18—	6	77
" 19—	2	46
	195	1,037

Majorité pour Stearns, 842.
Majority for Stearns, 842.

Depot forfait: McLachlan.
Deposit forfeited: McLachlan.

Saint-Laurent.—St. Lawrence.

Charge No 1. Election par acclamation.
Office No. 1. Election by acclamation.

Charge No 2. — Office No. 2.

	Crowe.	Robinson.
Poll No 1—	44	62
" 2—	73	58
" 3—	52	46
" 4—	67	44
" 5—	54	33
" 6—	60	36
" 7—	25	45
" 8—	47	46
" 9—	26	41
" 10—	36	30
" 11—	30	61
" 12—	29	76
" 13—	24	54
" 14—	20	61
" 15—	25	63
" 16—	26	81
" 17—	20	43
" 18—	19	66
" 19—	20	75
" 20—	15	48
" 21—	5	57
" 22—	29	86
" 23—	37	80
	783	1,292

Majorité pour Robinson, 509.
Majority for Robinson, 509.

Saint-Louis.

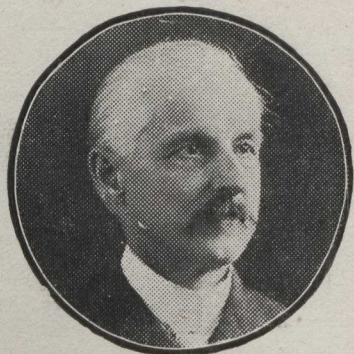
Charge No 1. Election par acclamation.
Office No. 1. Election by acclamation.

Charge No 2. — Office No. 2.

	Daoust.	Gadbois.	Lemay.
Poll No 1—	49	37	34
" 2—	32	43	43
" 3—	31	27	31
" 4—	31	27	34
" 5—	46	25	30
" 6—	42	19	20
" 7—	34	36	59
" 8—	49	27	51
" 9—	28	39	35
" 10—	20	16	30
" 11—	37	20	71
" 12—	34	44	53
" 13—	25	22	36
" 14—	38	29	21
" 15—	16	36	17
" 16—	30	32	12
" 17—	29	31	21
" 18—	18	59	18
" 19—	34	30	23
" 20—	27	53	8
" 21—	36	40	23
" 22—	24	54	18
" 23—	35	65	20
" 24—	22	43	29
" 25—	31	13	22
" 26—	33	29	28
	831	896	793

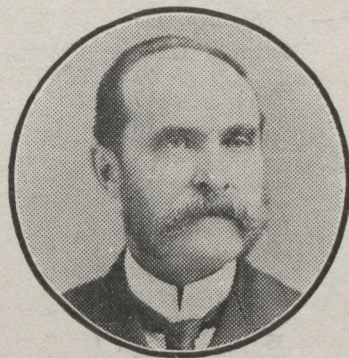
Majorité pour Gadbois, 65.
Majority for Gadbois, 65.

Saint-Henri—St. Henry

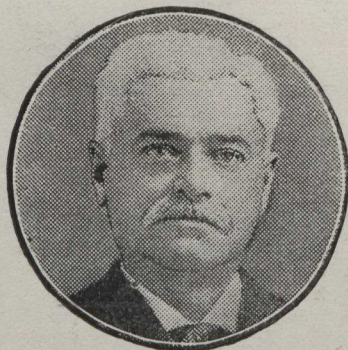


No. 1.—E. GUAY
Né—St-Joseph (Lévis), 1852—Born
Manufacturier—Manufacturer

Sainte-Cunégonde



No. 1.—J. ROY
Né—St-Isidore (Lap'airie), 1844—Born
Entrepreneur—Contractor



No. 2.—O. DAVID
Né—St-Vincent de Paul, 1848—Born
Marchand—Merchant



No. 2.—N.-A. LAPOINTE
Né—St-Michel (Bellechasse), 1839—Born
Commerçant—Merchant

Saint-Jacques.—St. James.

Charge No 1. — Office No. 1.

Poll No	Bastien.	Giroux.
1—	57	71
2—	56	67
3—	30	74
4—	58	69
5—	52	67
6—	50	50
7—	71	60
8—	66	44
9—	48	55
10—	45	71
11—	33	112
12—	41	104
13—	35	57
14—	39	47
	681	948

Majorité pour Giroux, 267.
Majority for Giroux, 267.

Charge No 2. Election par acclamation.
Office No. 2. Election by acclamation.

Saint-Jean-Baptiste.

Charge No 1. Election par acclamation.
Office No. 1. Election by acclamation.

Charge No 2. — Office No. 2.

Poll No	Proulx.	Vandelac.
1—	48	83
2—	72	62
3—	65	65
4—	70	64
5—	63	56
6—	39	72
7—	44	71
8—	74	73
9—	48	35
10—	34	40
11—	40	32
12—	38	38
13—	53	21
14—	68	52
15—	56	40
16—	44	58
17—	33	31
18—	36	40
19—	49	39
20—	46	48
21—	34	30
	1,054	1,050

Majorité pour Proulx, 4.
Majority for Proulx, 4.

Hochelaga.

Charge No 1. — Office No. 1.

Poll No	Marin.	Wilson.
1—	29	49
2—	25	58
3—	66	53
4—	45	42
5—	74	71
6—	52	33
7—	48	33
8—	91	57
9—	53	42
10—	53	29
11—	69	34
	605	501

Majorité pour Marin, 104.
Majority for Marin, 104.

Charge No 2. Election par acclamation.
Office No. 2. Election by acclamation.

Saint-Denis.

Charge No 1. — Office No. 1.

Poll No	Houlé.	Paquin.
1—	27	22
2—	41	29
3—	62	24
4—	50	37
5—	39	38
6—	43	52
7—	40	41
8—	41	45
9—	53	65
10—	53	38
11—	48	40
12—	68	39
13—	109	37
14—	43	22
15—	41	22
16—	32	25
17—	37	26
18—	105	9
19—	49	19
20—	50	20
21—	46	36
22—	43	16
23—	46	24
24—	49	43
25—	53	36
26—	43	19
27—	23	41
28—	40	53
	1,374	918

Majorité pour Houlé, 456.
Majority for Houlé, 456.

Charge No 2. Election par acclamation.
Office No. 2. Election by acclamation.

Duvernay.

Charge No 1. Election par acclamation.
Office No. 1. Election by acclamation.

Charge No 2. — Office No. 2.

Poll No	Lévesque.	Ouimet.
1—	53	73
2—	48	43
3—	45	47
4—	83	48
5—	38	47
6—	42	42
7—	54	49
8—	44	34
9—	60	39
10—	56	27
11—	78	66
12—	43	34
	644	549

Majorité pour Lévesque, 95.
Majority for Lévesque, 95.

Saint-Henri—St. Henry.

Charge No 1. — Office No. 1.

Poll No	Archambault.	Guay.
1—	26	76
2—	26	70
3—	41	94
4—	61	97
5—	61	53
6—	23	66
7—	21	62
8—	56	78
9—	30	81
10—	40	43
11—	42	37
12—	51	58

Poll No		
13—	48	69
14—	63	39
15—	48	57
16—	53	30
17—	66	42
18—	47	31
19—	56	53
20—	51	43
21—	47	55
22—	38	41
23—	36	51
24—	58	83
25—	43	56
26—	16	60
27—	32	56
28—	57	75
29—	62	54
30—	52	55
31—	36	43
32—	45	48
33—	53	54
34—	44	43
35—	40	58
36—	44	41
37—	36	58
38—	33	57
39—	41	49
40—	67	73
41—	26	78
	1,816	2,367

Majorité pour Guay, 551.
Majority for Guay, 551.

Charge No 2. — Office No. 2.

Poll No	David.	Senecal.
1—	23	78
2—	23	75
3—	49	87
4—	76	82
5—	67	52
6—	28	57
7—	15	69
8—	69	67
9—	29	81
10—	39	49
11—	49	30
12—	62	48
13—	64	57
14—	64	57
15—	45	58
16—	63	21
17—	79	30
18—	52	28
19—	72	34
20—	70	25
21—	48	55
22—	51	28
23—	58	35
24—	87	54
25—	50	50
26—	20	58
27—	40	48
28—	60	73
29—	73	46
30—	51	56
31—	41	39
32—	48	46
33—	57	49
34—	47	40
35—	44	53
36—	62	26
37—	64	30
38—	43	46
39—	52	37
40—	77	62
41—	29	72
	2,140	2,073

Majorité pour David, 67.
Majority for David, 67.

Sainte-Cunégonde.			Poll No 12—		Poll No 4—	
Charge No 1.— Office No. 1.			41	95	51	53
Cypihot. Roy.			67	64	64	43
Poll No 1—	27	84	118	61	49	50
" 2—	44	54	753	894	61	54
" 3—	29	52	Majorité pour Roy, 141.		70	50
" 4—	55	49	Majority for Roy, 141.		73	60
" 5—	48	59	Charge No 2. — Office No. 2.		8—	50
" 6—	52	48	Lapointe. Marcotte.		9—	60
" 7—	61	53	Poll No 1—	74	35	100
" 8—	59	61	" 2—	49	51	88
" 9—	63	69	" 3—	52	31	101
" 10—	46	67			1,002 652	
" 11—	43	78			Majorité pour Lapointe, 350.	
					Majority for Lapointe, 350.	

Certifié.

L.-O. DAVID,
Officier-Rapporteur,
RENE BAUSET,
Secrétaire d'élection.

BUREAU DU GREFFIER DE LA VILLE,
4 février 1906.

Certified.

L. O. DAVID,
Returning Officer
RENE BAUSET,
Election Secretary.

CITY CLERK'S OFFICE,
February 4th, 1906.

PROCLAMATION.

AVIS PUBLIC est par les présentes donné qu'après la clôture de l'élection pour la mairie et les charges d'échevins pour lesquelles il y avait contestation, qui a eu lieu jeudi, le 1er février courant, et après l'examen et l'addition finale des suffrages, d'après les relevés fournis par les différents sous-officiers-rapporteurs nommés pour les divers bureaux de votation, et après l'expiration du délai fixé par la loi pour un décompte devant un juge, j'ai constaté que les candidats suivants ont obtenu la majorité des votes et je proclame, par conséquent, lesdits candidats dûment élus :

MAIRIE
H.-A. Ekers.

CHARGES D'ECHEVINS

- QUARTIER EST.
Charge No 2. J.-C.-E. Lévy.
- QUARTIER CENTRE
Charge No 1. G. DeSerres.
Charge No 2. H. Mercier.
- QUARTIER SAINTE-ANNE.
Charge No 2. T. O'Connell.
- QUARTIER SAINT-JOSEPH.
Charge No 1. J.-B.-A. Martin.
Charge No 2. J.-H. Nault.
- QUARTIER SAINT-GEORGES.
Charge No 2. I.-H. Stearns.
- QUARTIER SAINT-LOUIS.
Charge No 2. J.-P. Gadbois.
- QUARTIER SAINT-LAURENT.
Charge No 2. J. Robinson.
- QUARTIER SAINT-JACQUES.
Charge No 1. N. Giroux.
- QUARTIER HOCHELAGA.
Charge No 2. J.-P. Marin.
- QUARTIER DUVERNAY.
Charge No 2. V. Lévesque.
- QUARTIER SAINT-DENIS.
Charge No 1. R. Houlié.
- QUARTIER SAINT-HENRI.
Charge No 1. E. Guay.
Charge No 2. O. David.
- QUARTIER SAINTE-CUNEGONDE.
Charge No 1. J. Roy.
Charge No 2. N. Lapointe.

L.-O. DAVID,
Officier-Rapporteur.

HOTEL DE VILLE,
Montréal, 8 février 1906.

PUBLIC NOTICE is hereby given that, after the closing of the election for the Mayoralty and the offices of Aldermen where there was a contest, held on Thursday, the 1st of February instant, and after the examination and final addition of the votes, as furnished by the returns of the Deputy Returning Officers appointed for the different polls, and after the expiration of the delay fixed by law for a recount before a judge, I have ascertained that the following candidates have obtained the majority of the votes, and I accordingly proclaim the said candidates duly elected :—

MAYORALTY.
H. A. Ekers.

ALDERMEN.

- EAST WARD.
Office No. 2. J. C. E. Lévy.
- CENTRE WARD.
Office No 1. G. DeSerres.
Office No 2. H. Mercier
- ST. ANN'S WARD.
Office No. 2. T. O'Connell.
- ST. JOSEPH WARD.
Office No. 1. J. B. A. Martin.
Office No. 2. J. H. Nault.
- ST. GEORGE WARD.
Office No. 2. I. H. Stearns.
- ST. LOUIS WARD.
Office No. 2. J. P. Gadbois.
- ST. LAWRENCE WARD.
Office No. 2. J. Robinson.
- ST. JAMES WARD.
Office No. 1. N. Giroux.
- HOCHELAGA WARD.
Office No. 2. J. P. Marin.
- DUVERNAY WARD.
Office No. 2. V. Lévesque.
- ST. DENIS WARD.
Office No. 1. R. Houlié.
- ST. HENRY WARD.
Office No. 1. E. Guay.
Office No. 2. O. David.
- ST. CUNEGONDE WARD.
Office No. 1. J. Roy.
Office No. 2. N. Lapointe.

L. O. DAVID,
Returning Officer.

CITY HALL,
Montreal, 8th February 1906.

Proclamation

AVIS PUBLIC est par les présentes donné qu'après la clôture de l'élection pour la mairie et les charges d'échevins pour lesquelles il y avait contestation, laquelle a eu lieu jeudi, le 1er février courant, et après l'addition finale des votes, faite samedi, le 3 février courant, et après un décompte devant un juge de la Cour Supérieure, qui a eu lieu jeudi, le 8 février courant, j'ai constaté que pour la charge d'échevin No 2, quartier St.-Jean-Baptiste, le candidat suivant, savoir, WILFRID-J. PROULX, N.P., No 990, rue St-Laurent, avait obtenu la majorité des suffrages donnés;

Je déclare en conséquence ledit Wilfrid-J. Proulx dûment élu pour ladite charge d'échevin No 2, quartier St-Jean-Baptiste.

L.-O. DAVID,
Officier-Rapporteur.

HOTEL DE VILLE,
Montréal, 9 février 1906.

PUBLIC NOTICE is hereby given that after the closing of the election for the Mayoralty and the offices of Aldermen for which there was a contest, held on the 1st February inst., and after the final addition of the votes, made on Saturday, the 3rd of February inst., and after a recount before a judge of the Superior Court, held on Thursday, the 8th February inst. I have ascertained that for office of Alderman No. 2, St. Jean-Baptiste Ward, the following candidate, namely, WILFRID J. PROULX, N.P., No. 990, St. Lawrence street, had obtained a majority of the votes cast;

I accordingly declare the said Wilfrid J. Proulx duly elected for said office of Alderman No. 2, St. Jean-Baptiste Ward.

L. O. DAVID,
Returning Officer.

CITY HALL,

Montreal, 9th February, 1906.

DELIBERATIONS

COMMISSION DE L'INCINERATION

Compte rendu de l'assemblée du 26 janvier.

Sont présents : MM. les échevins Lavallée, président, Turner, Ricard, Wilson et Gallery.

—*Résolu* : D'autoriser le surintendant et M. Jules Crépeau, ci-devant secrétaire de cette Commission, à accepter l'offre faite par la Succession Sheppard, d'un certain lopin de terre, à la condition que l'option y mentionnée pour une plus grande étendue de terrain soit prolongée jusqu'au premier juillet prochain. (M. l'échevin Wilson dissident.)

—*Résolu* : D'autoriser le surintendant à faire déposer des cendres sâssées, aussitôt que les chemins le lui permettront, dans la cour du "Boating Club" à la Pointe St-Charles.

—*Résolu* : De déposer aux archives les lettres de M. Chas-L. Higgins concernant le terrain offert par ce dernier pour être utilisé comme dépotoir du département et de donner instruction au surintendant de voir à ce que ledit M. Higgins lui procure ce terrain comme dépotoir, mais gratuitement.

—Le surintendant fait rapport qu'il a ordonné à l'entrepreneur de l'enlèvement des déchets de la ville de St-Henri de charroyer lesdits déchets à l'incinérateur situé entre les rues Centre et St-Patrice, quartier St-Gabriel, et que ledit entrepreneur s'est conformé à cet ordre.

—Instruction est donnée au surintendant de répondre à la lettre de MM. Davidson & Wainright, en date du 13 janvier courant, que dorénavant il ne sera plus rien déposé au dépotoir dont il est question dans leur lettre qui est déposée aux archives.

—Reçue et lue une communication de M. P. Simard, acceptant la proposition faite par le Conseil au sujet de l'enlèvement de certains rebuts à l'incinérateur, et il est en conséquence

Résolu : D'en faire rapport au Conseil.

—*Résolu* : Qu'un certificat d'achat ou de pesée soit toujours laissé au vendeur qui fera affaires avec le département.

—Le surintendant fait rapport qu'il a assumé le contrôle des nouveaux quartiers annexés de Ste-Cunégonde, St-Henri et Villeray ainsi que des employés proposés au service de l'en-

INCINERATION COMMITTEE

Report of meeting held the 26th of January.

Present : Ald. Lavallée, chairman, Turner, Ricard, Wilson and Gallery.

—*Resolved* : That the Superintendent and Mr. Jules Crépeau heretofore secretary of this Committee, be authorized to accept the offer made by the Estate Sheppard, of a certain piece of land, provided the option as mentioned in the offer, for a larger tract of land, be extended till the first of July next. (Ald. Wilson dissenting.)

—*Resolved* : That the Superintendent be authorized to have sifted ashes put in the yard of the "Boating Club" at Point St. Charles, as soon as the state of the roads will permit.

—*Resolved* : That the letters received from Mr. Chas. L. Higgins, concerning the land offered by him to be used as a dumping ground by the department, be filed of record; and that the Superintendent be requested to ascertain if said land can be obtained from Mr. Higgins, gratuitously.

—Read a report from the Superintendent stating he had given orders to the contractor (in case of the removal of garbage from the City of St. Henry), to cart garbage from St. Henry to the incinerator, in St. Gabriel Ward, and that the contractor had complied with said orders.

—The superintendent was instructed to answer the letter of Messrs. Davidson & Wainright, dated the 13th of January instant, and to state that, in the future, nothing shall be deposited at the dump mentioned in their letter. Said letter was filed of record.

—Received and read a communication from M. P. Simard, accepting the proposal, made by Council, anent the removal of certain rubbish at the incinerator; it was consequently

Resolved : That a report be made to Council accordingly.

Resolved : That a certificate of purchase or of weight be issued to vendors doing business with this department.

—The superintendent reported that he had assumed control of the newly annexed wards, St. Cunégonde, St. Henry, and Villeray, and also of the four employees in charge of the removal of garbage in said wards, (three from St. Cuné-

lèvement, au nombre de quatre, dont trois de Ste-Cunégonde et un de St-Henri. Ces employés font parties des différentes escouades d'hommes employés au département. Il a aussi pris possession du matériel roulant de ces nouveaux quartiers annexés, consistant en :

2 chevaux, valant	\$200.00
2 voitures d'hiver simples, valant	40.00
2 tombereaux, valant	150.00
2 harnais, valant	25.00
1 petite bâtisse, 10 X 10, valant	20.00
1 petite bâtisse, 15 X 30, valant	30.00
1 petite bâtisse, 12 X 12, valant	20.00
Total	\$485.00

Déposé aux archives.
—Le surintendant est autorisé par la Commission à prendre les mesures nécessaires pour empêcher que l'on déverse quoi que ce soit au dépotoir de St-Henri.

—Sur proposition de M. Péchevin Turner, il est Résolu : Que les membres de cette Commission, étant à leur dernière assemblée, tiennent à témoigner de leur appréciation du zèle et du dévouement que, durant les quatre dernières années, le président a déployés dans l'intérêt du département et à lui offrir en outre leurs remerciements pour l'urbanité et l'équité avec laquelle il a traité chacun des membres de cette Commission.

Ajournement.

P. OLIVIER,
Secrétaire.

gonde and one from St. Henry), said employées were placed in the different squads of the department. The superintendent also stated that he had taken possession of the rolling stock of the newly annexed wards, which consists of:

2 horses, valued @	\$200.00
2 sing'le sleighs @	40.00
2 tumbrels @	150.00
2 harnesses @	25.00
1 small building, 10 X 10.	20.00
1 small building, 15 X 30.	30.00
1 small building, 12 X 12.	20.00
Total	\$485.00

Filed of record.

—The superintendent was authorized by the Committee to take the necessary measures in order to prevent the dumping of anything whatsoever on the St. Henry dumping ground.

—On motion of Ald. Turner, it was

Resolved : That this being the last meeting of the Committee, the members desire to record their appreciation of the zealous care exercised by the chairman during the past four years, in the interest of the department ; and, moreover, extend to the chairman their sincere thanks for the courtesy and equity manifested in the treatment of his colleagues.

Adjourned.

P. OLIVIER,
Secretary.

Service Meteorologique.
Meteorological Department.

Rapport de la semaine finissant le Mercredi, 7 Février, à 12 hrs p. m.
Weekly report ending Wednesday, February 7th, Midnight.

	Feb. 1	Feb. 2	Feb. 3	Feb. 4	Feb. 5	Feb. 6	Feb. 7	
THERMOM.	Maximum	33	3	14	31	20	-7	8
	Heure.-Hour. 3 & 7 p. m.	3 a. m.	11 p. m.	11 p. m.	3 a. m.	3 p. m.	7 p. m.	
	Minimum	20	-11	-11	18	-6	-14	-8
BAROM.	Maximum	29.864	30.311	30.500	30.128	30.648	30.797	30.698
	Heure.-Hour.	3 a. m.	11 p. m.	7 a. m.	3 a. m.	11 p. m.	11 a. m.	3 a. m.
	Minimum	29.619	29.840	30.218	29.962	30.198	30.723	30.456
HYGROM.	Maximum							
	Heure.-Hour.							
	Minimum							
VENT-WIND	Vélocité. Max. Velocity.	22	29	17				10
	Heure.-Hour.	12 p. m.	4 p. m.	1 a. m.				1 & 3 p. m.

JAMES FERNS } Surintendant.
Superintendent.

Service des Alarmes d'Incendie.
Fire Alarm Department.

Rapport de la semaine finissant le Mercredi, 7 Février, à 12 p. m.
Weekly report ending Wednesday, February 7th, at 12 p. m.

Quartier. Ward.	Date.	Avert'seur. Box.	A. M.	P. M.	Retour. Return.
St. Joseph's	Feb. 1 '06	375		9.09	9.14
St. Gabriel	" 2 "	245	11.05		11.20
St. Joseph's	" 3 "	346		6.38	6.42
Duvernay	" 3 "	374	6.43		6.52
St. Gabriel	" 3 "	673	7.41		7.54
St. Louis	" 3 "	245	8.53		9.09
Lafontaine	" 3 "	531	9.55		10.04
St. Lawrence	" 3 "	572	10.30		10.39
St. James	" 3 "	56		3.20	3.26
West	" 3 "	723		4.40	4.46
St. Andrew's	" 3 "	116		7.09	8.40
St. Jean Baptiste	" 3 "	435		7.40	9.49
St. Henri	" 3 "	677		9.44	9.52
St. Ann's	" 4 "	Telephone		10.10	Nos 1,4,9 & 12 Engines to Cotton f.
St. Joseph's	" 4 "	359	12.57		1.20
St. James	" 4 "	Telephone	1.50		No 1 Salvage—To 25 St. Antoine.
St. Ann's	" 5 "	723		5.00	5.06
St. Ann's	" 5 "	Telephone		5.28	No 4—To St. Maurice & O'Connell.
East	" 5 "	147		2nd alr.	
St. Mary's	" 6 "		10.20		10.14
East	" 6 "	752		1.12	11.17
Lafontaine	" 6 "	Telephone		2.21	No. 2—To Bonsecours Market.
St. Lawrence	" 6 "	758		4.33	4.37
St. Ann's	" 6 "	577		9.15	9.27
Lafontaine	" 6 "	324		11.00	11.16
Papineau	" 7 "	569	7.34		7.43
St. Andrew's	" 7 "	747	8.05		8.14
St. Louis	" 7 "	Telephone	8.50		No. 10—To 17 Buckingham Av.
St. Louis	" 7 "	52	10.39		10.43
St. Gabriel	" 7 "	Telephone		1.54	No. 2—To St. Elizabeth & Craig.
St. Jean Baptiste	" 7 "	218		3.37	3.47
Papineau	" 7 "	649		7.55	8.08
St. Jean Baptiste	" 7 "	727		7.58	8.03
St. Jean Baptiste	" 7 "	682		9.31	9.37

JAMES FERNS } Surintendant.
Superintendent.

SERVICE DES INCENDIES.

FIRE DEPARTMENT.

Rapport de la semaine finissant Mercredi, 7 Fév., à 12 h. p.m.

Weekly report ending Wednesday, Feb. 7th, at 12 p.m.

Date.	Heure. Hour.	Avertis- seur. Box.	Localité. Location.	Quartier. Ward.	Genre d'édifice. Description of building	Usage. For what purpose occupied.	Cause de l'incendie. Cause of fire.	Occupant. Tenant.	Dom- mages. Damages	Ont répon- dus à l'ap- pel (stat'n) Resp'd to call (stat.)
Feb. 1st	7.15 p. m.	87	89 Marin	St. Henry	Wood	Shed	Unknown	J. Malone	Slight	22, 23
" 1	9.09 p. m.	375	1160 St. James	St. Joseph	Stone	Hardware store	Furnace	Lanouette frère	"	12
" 2	7.45 a. m.	73	74 Lacroix	St. Henry	Brick	Dwelling	Chimney	J. Dorion	None	23
" 2	10.05 a. m.	245	574 Centre	St. Gabriel	"	"	"	A. Desert	None	15
" 2	6.38 p. m.	346	113 St-Martin	St. Joseph	"	"	"	A. Denis	None	14
" 2	7.40 p. m.	Still	83 McGill	West	Brick	Paper Box Fact.	"	Standard Box Co	None	1
" 3	6.43 a. m.	374	577a Albert	St. Joseph	"	Dwelling	Thawing Water Pipe	A. Maranda	Slight	12
" 3	7.41 a. m.	673	570 Mentana	Duvernay	Stone	"	Thawing Water Pipe	Mrs Pyne	Slight	16
" 3	8.53 a. m.	245	525 Centre	St. Gabriel	Brick	"	Unknown	A. Laporte	Slight	15
" 3	9.55 a. m.	531	176 St. Lawrence	St. Lawrence	Stone	Furniture Store	Furnace	Landé Bros	Slight	6
" 3	10.30 a. m.	572	369 Berri	Lafontaine	Brick	Dwelling	Plumbers	Vacant	Slight	6
" 3	3.20 p. m.	56	37 Coté	St. Lawrence	"	"	Stove	Louis Robert	Slight	20
" 3	4.40 p. m.	723	158 Panet	Papineau	Stone	School	Spontaneous	Brothers School	Slight	7, 11
" 3	5.10 p. m.	17 Aut	West	West	Stone	"	"	Automatic False	"	4, 5, 20
" 3	5.50 p. m.	Still	336 Richmond	St. Jeseph	Brick	Dwelling	Chimney	J. Lagarec	Slight	12
" 3	7.09 p. m.	116	35 St. Nicholas	West	Stone	Offices	Unknown	James Coristine	Consider	1, 3, 4, 5, 20
" 3	7.40 p. m.	435	242, 244, 246 Bishop	St. Andrew's	"	Dwelling	Unknown	C. Hanson, Miss Syms	Consider	4, 5, 6, 10, 12
" 3	9.44 p. m.	677	1140 City Hall Ave.	St. Jean Bte.	Brick	"	Thawing Water Pipe	M. Miller	Slight	14
" 3	9.30 p. m.	Still	44 Agnes	St. Henry	"	"	Chimney	M. Hogue	None	23 [24
" 3	9.55 p. m.	Phone	St. Ambroise St.	"	Wood	Storage	Unknown	Merchant Cotton Co.	Consider	4, 9, 12, 22, 23
" 4	12.57 a. m.	359	82 St. Maurice	St. Ann's	Brick	Grocer store	Unknown	F. Abraham	Consider	2, 3, 4, 20
" 4	1.55 a. m.	Still	711 St. Paul	"	Stone	Church	Furnace	St. Edwards Church	Slight	4
" 4	7.53 p. m.	34	"	St. Cunégonde	"	"	"	False Alarm	"	23
" 4	8.20 p. m.	Phone	"	St. Henry	"	"	"	Phone False	"	24
" 5	10.55 a. m.	Still	763 Ontario	St. Mary's	Brick	Storage	Unknown	Jos. Pepin	Slight	19
" 0	5.00 p. m.	723	155 Panet	Papineau	"	Logis	Thawing Water Pipe	M. Lafranchise	"	8
" 5	5.28 p. m.	Phone	82 St. Maurice	St. Ann's	Brick	Grocer Store	Fire rekindled	F. Abraham	"	4
" 5	6.10 p. m.	36 Aut	Centre	Centre	"	"	"	Automatic False	"	2, 20
" 5	10.14 p. m.	147	96 St. Paul	East	Stone	Market	Unknown	J. Proulx	Consider	1, 2, 7, 6, 8, 20
" 6	3.50 a. m.	23	69 Beaudoin	St. Henry	Brick	Butcher Shop	Unknown	J. Plouffe	Slight	22, 23, 24
" 6	1.12 p. m.	752	307 DeMontigny	St. Mary	"	Logis	Poêle	Mad. Seguin	Leger	19
" 6	2.25 p. m.	Phone	96 St. Paul	East	Stone	Market	Fire rekindled	City	Slight	2
" 6	4.33 p. m.	758	11 Robin	Lafontaine	Brick	Logis	Allumettes	J. St. Amour	Leger	11
" 6	9.15 p. m.	577	1686 Ontario	St. Lawrence	"	Machine Shop	Poêle	Dominion Bolt Co.	"	5, 6
" 6	11.00 p. m.	324	144 William	St. Ann's	"	Saw Works	Furnace	Robertson Co. Ltd.	Slight	1, 12
" 7	6.40 a. m.	Still	4 Leroux	St. Joseph	"	Logis	Cheminée	Mrs Rowen	None	12
" 7	7.34 a. m.	569	487 Amherst	Lafontaine	"	"	"	Mad. Thomas	Leger	11
" 7	8.05 a. m.	747	882 DeMontigny	Papineau	"	Stable	Thawing Water Pipe	A. Vinette	Slight	8
" 7	10.39 a. m.	52	19 Vitré	St. Louis	"	Grocer Store	Furnace	A. Bastien	None	2

Z. BENOIT,

Chet de la Brigade.—Chief Fire Department.

DEPARTEMENT D'HYGIENE. — HEALTH DEPARTMENT.

Bulletin de la semaine finissant le samedi, 3 Février, à midi.

Weekly report, ending Saturday, the 3rd February, at noon.

CAS DE MALADIES ET DECÈS RAP- PORTÉS.	Semaine.		Depuis le com- mencement de de l'année.		CASES OF DISEASES AND DEATHS REPORTED.
	Week.		From the be- ginning of the year.		
	Cas.	Décès.	Cas.	Décès.	
	Cases	Deaths.	Cases	Deaths.	
Fièvre typhoïde.	29	7	19		Typhoid Fever
Variole					Smallpox
Varicelle					Chickenpox
Rougeole	3				Measles
Scarlatine	15		2		Scarlet-fever
Diphthérie et Croup.	10		8		Diphther. and Croup
Coqueluche.	4	1	2		Whooping-cough
Tuberculose.	7	2	74		Tuberculosis
Pneumonie	21	17	70		Pneumonia
Entérite, diarrhée, } choléra infantile }	6	15	60		Enteritis, diarrh. } cholera infantum }
Autres maladies.		73	342		Other diseases
Total			577		Total
Illégitimes			42		Illegitimates
			619		

TUBERCULOSE		TUBERCULOSIS.	
Visites	98	Visits	98
Désinfections après décès	22	Disinfections after deaths	22
Autres désinfections		Other disinfections	
Crachoirs hygiéniques distribués	640	Spit cups distributed	640

MESURES PRÉVENTIVES.		PREVENTIVE MEASURES.	
Maisons désinfectées	21	Houses disinfected	21
Maisons en état d'insalubrité	67	Houses in an unhealthy condition	67
Isololements domiciliaires	6	Houses isolated	6
Vérifications de maladies conta- gieuses		Contagious diseases investigated	
Vérifications de vaccinations dans les écoles	1271	Vaccinations verified in schools	1271
Vérifications de vaccinations dans les manufactures		Vaccinations verified in factories	
Vaccinations	10	Vaccinations	10
Revaccinations		Revaccinations	
Avis légaux	53	Notices served	53
Actions intentées	1	Suits brought	1
Jugements obtenus		Judgments obtained	
Curage de fosses d'aisances		Privies cleaned	

HOPITAL CIVIQUE	Diphthérie.		Autres cas.		CIVIC HOSPITAL.
	Diphtheria.	Scarlatine.	Other cases.	Of full age.	
	Scarlet-fever.		Under age.		
Patients admis	5	3	3	7	Patients admitted
Patients guéris	2	2	2	5	Patients cured
Patients décédés					Patients who died
Patients actuels	16	16	4	15	Patients now confin.

ABATTOIRS.		ABATTOIRS.	
Abattus.		Slaughtered.	
Bœufs	1482	Cattle	1482
Veaux	260	Calves	260
Moutons	312	Sheep	312
Cochons	2120	Hogs	2120

Confiscations.		Confiscations.	
Bœufs	4	Cattle	4
Veaux	1	Calves	1
Moutons	3	Sheep	3
Cochons		Hogs	
Foies	4	Livers	4
Viande meurtrie	10 lbs	Bruised meat	10 lbs

OPÉRATIONS DES INSPECTEURS SANITAIRES.

WORK OF THE SANITARY INSPECTORS.

Visites régulières	1945	Regular visits	1945
Visites spéciales	220	Special visits	220
Secondes visites	197	Second visits	197
Logements visités	1894	Dwellings visited	1894
Autres bâtisses	324	Other buildings	324
Étables et écuries	122	Stables	122
Caves	772	Cellars	772
Cours	1067	Yards	1067
Ruelles	44	Lanes	44
Latrines	19	Privies	19
Amas de fumier	16	Heaps of dung	16
Plaintes des citoyens	60	Complaints from citizens	60
Plaintes fondées	52	Complaints founded	52
Plaintes non fondées	8	Complaints unfounded	8
Ordres donnés pour faire dispa- raître nuisances	88	Orders given to abate nuisances	88

Canaux neufs	10	New drains	10
Permis de plomberie	24	Plumbing permits	24
Certificats de plomberie	5	Plumbing certificates given	5
Jours à d'autres fonctions	29	Days on other work	29
Épreuves des drainages	38	Drainage tests	38
Egouts	1128	Sewers	1128
Foyers	3280	Kitchen sinks	3280
Tuyaux de renvoi	3280	Waste-pipes	3280
Water-closets	2307	Water-closets	2307
Tuyaux de vidange	2177	Refuse pipes	2177
Ventilation	2307	Ventilation	2307
Chambres noires	139	Dark rooms	139
Sous-sols	146	Basements	146
Seconds avis	13	Second notices	13
Terrains vacants	26	Vacant lots	26

INSPECTION DES ALIMENTS.

FOOD INSPECTION.

	Lait.	Pain.	Viande.	Poissson.	Fruits, Lég. et Glace.	
	Milk.	Bread.	Meat.	Fish.	Fruits, Vege- tables & Ice.	
Inspections	80	71	770			Number of inspections
Echantillons examinés	28				Inspection de glace.	Samples examined
Analyses	1					Analysis
Plaintes	2				Ice inspection.	Complaints
Avis	5	26	3455 lbs		17,500 lbs.	Notices
Confiscations	1	1				Confiscations
Condammations						Court sentences
Qualité moyenne	Beurre, 3.75% Densité, 1031.4					{ Butter fat } { Density. } Average quality

DÉCÈS.	Sexe.—Sex.		Tot. An. Tot. Year	DEATHS.	DECES.	Sexe.—Sex.		Tot. An. Tot. Year	DEATHS.
	M.	F.				M.	F.		
De 0 à 6 mois	16	16	134	From 0 to 6 months	De 50 à 60 ans	4	4	49	From 50 to 60 years
De 6 à 12 mois	6	8	49	From 6 to 12 months	De 60 à 70 ans	5	7	46	From 60 to 70 years
De 1 à 2 ans	3	2	33	From 1 to 2 years	De 70 à 80 ans	7	4	45	From 70 to 80 years
De 2 à 5 ans	3	4	35	From 2 to 5 years	De 80 à 90 ans	1	3	13	From 80 to 90 years
De 5 à 10 ans	0	3	16	From 5 to 10 years	De 90 à 100 ans	0	0	4	From 90 to 100 years
De 10 à 15 ans	0	1	7	From 10 to 15 years	De 100 et au-dessus	0	0	1	From 100 and over
De 15 à 20 ans	0	4	27	From 15 to 20 years	Total			577	Total
De 20 à 30 ans	9	3	44	From 20 to 30 years	Illégitimes			42	Illegitimate.
De 30 à 40 ans	5	5	33	From 30 to 40 years				619	
De 40 à 50 ans	4	4	41	From 40 to 50 years					

NAISSANCES.

Semaine — Week

(Depuis 1er Juillet)

BIRTHS.

	Masculin		Féminin		
	M.	F.	M.	F.	
Canadiens	28	18	286		} Canadian
Français	6	4	63		
Anglais	4	4	50		
Irlandais	1	0	17		
Autres nationalités	6	9	52		} Other nationalities
Illégitimes					Illegitimates
Total	45	35	474		Total

L. LABERGE, { Surintendant médical du Bureau d'Hygiène.
Health Superintendent.

MUTATIONS DE PROPRIETES.—TRANSFERS OF PROPERTIES.

Quartier. Ward.	No d'enregistrement. Registration Number.	Date de l'enregist. Date of registration.	Date du Contrat. Date of Deed.	Vendeur. Vendur.	Acquéreur. Purchaser.	No du Cadastre. Cadastral Number.	Etendue.—Area.	Rue. Street.	Prix. Price.
MONTREAL-UEST.									
St. Joseph...	141818	2 Février 1906	10 Jan. 1906	V. Raby	T. A. Craik & al.	75	2400	Quesnel	B \$ 4,000 00
	141819	" " "	26 " "	A. Valliquette	De L. Cousineau	394	7194	Richmond	B 6,400 00
St. George..	141828	3 " " "	5 " "	Church of the Messiah	De R. N. Smyth	1149	7913	Lagauchetière	B 23,000 00
St. Joseph...	141841	6 " " "	5 Fév. "	L. Guyon	S. Cohen	694-5 & 6	3874	Ave. Impériale	B 6,550 00
MONTREAL-WEST.									

MONTREAL-EST.									
MONTREAL-EAST.									
Lafontaine..	64916	29 Janvier 1906	29 Jan. 1906	M. Desautels	De J. Laurier	1198-15	2116	Berri	B \$4,000 00
St Jacques..	64939	" " "	25 " "	F. X. Chef dit Vadeboncoeur	J. Rochon	105	7840	Craig &c	B 8,800 00
St. Louis ...	64934	" " "	11 " "	The Molson's Bank	E. M. Roberts	90 & 91	17619	Lagauchetière	B 15,000 00
Papineau...	64935	" " "	20 " "	De V. Durand	A. Gagnon	1144-8 & 9	3320	Papineau	B 4,500 00
St. Marie ...	64937	" " "	29 " "	I. Préfontaine	B. Germain	1359-19-10	1640	Logan	L 500 00
Lafontaine..	64949	" " "	19 " "	S. H. Carpenter	De A. Masson	P. 1203-89 & 90	270	Cherrier	B 6,500 00
St. Louis ...	64951	" " "	6 Déc. 1905	De P. Auclair & al.	F. Zampini	209	3788	Ste-Elisabeth	B 5,450 00
Lafontaine..	64953	" " "	24 Jan. 1906	De W. Strachan	De L. E. A. Lionais	P. 1203-330	2491	St. Hubert	B 6,250 00
St. Jacques..	64962	1 Février 1906	31 " "	A. M. Henry & al.	F. Rosconi	589	3300	Amherst	B 3,000 00
St. Louis ...	64965	" " "	26 " "	A. Wray	C. G. Gaucher	P. 301	1449	St. Dominique	B 4,800 00
" " "	64966	" " "	24 " "	C. G. Gaucher	B. Ram	P. 301	1449	do	B 5,000 00
Lafontaine..	64967	" " "	29 " "	J. L. Laurier	J. H. Labelle	1198-15	2116	Berri	B 4,400 00
St. Jacques..	64970	" " "	23 Déc. 1905	D. C. Brosseau	J. W. Harris	P. 415	1906-4	Dorchester	B 6,000 00
Lafontaine..	64971	" " "	16 Jan. 1906	G. H. Yelland	W. Lemieux	1198-13	2155	Berri	B 3,800 00
" " "	64972	" " "	30 " "	J. A. Mignault	L. Bouthillier	1203-291	2040	Roy	B 2,800 00
St. Louis ...	64973	" " "	31 " "	M. Rodrigue & al.	P. Rosenbaum & al.	107	5845	Lagauchetière	B 14,000 00
Lafontaine..	64981	" " "	31 " "	P. G. Martineau	L. Gouin	1200-33A	1725	Ernest	B 7,000 00
St. Louis ...	64982	" " "	30 " "	A. Geoffron	H. Weinfield	906-21	1720	Laval	B 6,500 00
" " "	64983	" " "	15 Déc. 1905	Delle A. Grothé	J. D. M. Grothé	1/2 372 & 373	4209	Dorchester	B 1,00 & Consid.
St. Laurent..	64983	" " "	" " "	do	do	1/2 P. de 627	6526	St Laurent	B 80 00
St. Louis ...	64986	" " "	20 " "	De G. G. Groome	T. Murphy	Droits dans 903-230à 233	5769	Sanguinet	B 6,500 00
St. Laurent..	64988	" " "	29 " "	F. Laliberté & al.	Charlie Yep Doong	652	2958	St. Urbain	B 7,000 00
" " "	64990	" " "	2 Février 1906	J. B. Desève	Rev'd P. Braye	767	2475	Chenneville	B 3,200 00
Lafontaine..	64993	" " "	3 " "	R. Piquette	De S. Filion	1144-12	2432	Montcalm	L 367 00
Papineau...	64994	" " "	5 " "	H. Dupré	A. Vallée	1226-13 & 14	2680	Gauthier	B 2,50 00
" " "	64995	" " "	5 " "	J. O. Mousseau	do	1226-13 & 14	2680	do	B 7,500 00
" " "	64996	" " "	2 " "	A. Vallée	A. Mireault	P. 334	3600	Craig	B 9,600 00
St. Jacques..	64997	" " "	6 " "	P. Mailhot	W. Goldstein	385-1 à 6	16270	St. Antoine &c	B 45,00 00
St. Henri...	64998	" " "	5 " "	A. Deschambault	F. L. Sylvestre	849-26	2012	St. Hubert	B 6,50 00
Lafontaine..	65001	" " "	1 " "	A. L. Kent	De L. Payette	440	7611	Gain & al.	B Pas de pr.
Papineau...	65002	" " "	24 Jan. 1906	J. T. Molson	J. W. Smith	P. S. O. 640	3159	Lagauchetière	B 6,000 00
St. Laurent..	65003	" " "	5 Fév. "	A. Desrochers	A. P. Lachapelle	899	3283	St. Timothée	B 4,150 00
Lafontaine..	65004	" " "	30 Jan. 1906	A. Messier	Annie Whelan	889-1 } 888-4 }	1433	Cadioux	B 1,029 90
St. Louis ...	65009	" " "	5 Fév. "	Mary A. Hall					

HOCHELAGA & JACQUES-CARTIER.

St. Jean Bte.	119883	29 Janvier 1906	26 Jan. 1906	V. Mongeau	A. Marcotte	15-346	2375	St. Denis	B \$ 6,250 00
St. Denis...	119886	" " "	30 Juin 1904	De F. Gosselin	E. K. Malouf	5-347 & 348	6500	Ave C. Colomb.	B 1,600 00
" " "	119887	" " "	7 Sept. '05	E. K. Malouf	A. K. Malouf	5-347 & 348	6500	do	B 1,900 00
" " "	119888	" " "	24 Jan. 1906	De C. Dagenais	De A. Cyr	329-99	2000	Dufferin	B 2,600 00
Hochelaga..	119890	" " "	3 " "	Gordon & Ironside	Gordon, Ironside, Fares Co., Ltd.	148-469 &c	91927	Ontario	L \$1 & cons
" " "	119891	" " "	3 " "	R. Ironside	do do	148-599 &c	81200	do	L \$1 & cons
St. Denis ...	119903	" " "	5 Oct. 1905	J. G. Duquette	M. MacNeil	339-606	2360	Marquette	B 2,400 00
" " "	119904	" " "	16 Déc. 1905	De J. A. Péladeau	Séminaire de St-Sulpice	198-76 & 77	6100	Rivard &c	B 5,000 00
" " "	119909	" " "	20 " "	De P. Brien dit Desrochers	F. D'as Gagnon	7-511	2175	St. André	B 1,800 00
" " "	119910	" " "	19 " "	O. Daoust	O. Gagnon	217	1779	Bibaud	B 1,050 00
St. Henri...	119913	" " "	29 " "	C. Bastien	A. Théoret	1705-132	3300	Delinelle	B 1,500 00
St. Denis...	119914	" " "	29 " "	De I. Lafrance & al.	W. E. Bolton	162-41 & 42	2600	Labelle	L 2,457 50
" " "	119917	" " "	17 Juin 1904	N. Robillard	P. Simard	489-198	2175	St. Hubert	L 200 00
" " "	119926	" " "	28 Jan. 1906	De J. A. Long	S. Cauchon	7-406	2175	do	B 2,300 00
" " "	119927	" " "	29 " "	S. Cauchon	E. Tétreau	7-406	4800	Richelieu	B 4,074 00
S. Cunegonde	119942	" " "	30 " "	M. Loar & Mrtg Coy	E. R. Prendergast	611 & 612	4800	do	B 5,800 00
" " "	119943	" " "	30 " "	E. R. Prendergast	De P. Leduc	611 & 612	4105	Frontenac &c	L 600 00
St. Marie ...	119946	" " "	11 " "	J. D. Molson & al.	C. Monbleau	166-63 & 90	4140	Reading	I 500 00
St. Gabriel..	119949	" " "	19 " "	J. K. Ward & Co.	C. J. Rott	3399-209 3399-208			

MUTATIONS DE PROPRIETES. Suite.—TRANSFERS OF PROPERTIES. Cont.

Quartier. — Ward.	No d'enregistrement. — Registration Number	Date de l'enregist. — Date of registration.	Date du Contrat. — Date of Deed.	Vendeur. — Vendor.	Acquéreur. — Purchaser.	No. du Cadastre. — Cadastral Number.	Etendue.—Area.	Rue. — Street.	Genre.—a.—Descrip.	Prix. — Price.
St. Gabriel..	119952	1 Février 1906	18 Jan. 1906	J. Préfontaine	Th. Préfontaine	2511, 2512 P. 2510	100000	St. Patrick.....	L	50,000 00
St. Denis....	119955	1 " "	31 " "	N. Martin dit Var-sailles	De J. Mongeau	162-6..	1650	Pontiac.....	B	3,500 00
"	119973	1 " "	29 Jan. 1906	De L. Rivet	Delle M. A. E. Larin..	325-70	1650	St. André.....	B	3,000 00
St. Henri....	119974	1 " "	30 Jan. 1906	J. Arpin	J. O. Ménard.....	1722-48.....	2203	Beaudoin.....	B	2,000 00
Hochelaga...	119980	2 " "	13 Jan. 1906	A. Lamarche	S. Girouard	29-193 & 196.....	6077	Ste Catherine...	L	3,038 50
St. Jean Bte..	119981	2 " "	15 " "	T. Bastien	A. Troie	15-793.....	1440	Sanguinet.....	B	\$2,000 00
St. Denis....	119982	2 " "	27 " "	De O. Amiot	N. Deslauriers.....	196-62.....	2550	Drolet	L	600 00
"	119983	2 " "	29 " "	De A. J. Laurence	Œuvre et Faprique de St-Michel Archange de Montréal	209-17 & 196-110 & 111	6350	St. Denis	L	2,400 00
"	119989	2 " "	31 " "	M. Gascon	J. B. Dufort	162-172	1540	Rivard	B	2,000 00
Duvernay...	119991	2 " "	1 Fév. "	Mont. Loan & Mort.Co.	N. Robillard	1-206	2575	Sydenham	B	800 00
St. Gabriel...	119994	2 " "	21 Déc. 1905	J. C. Senez	J. A. Devillers	2772 & 3030	10224	Richardson, &c.	B	9,000 00
Duvernay...	119995	2 " "	31 Jan. 1909	L. Corbeil	De J. A. Simard	1-57	2500	Marie-Anne	B	4,500 00
St. Jean Bte..	119996	2 " "	31 " "	N. Renaud	De L. Comtois	1/2 12-186	990	Ruelle St. Hubert	B	1,100 00
Duvernay...	119997	2 " "	31 " "	O. Giroux	J. Piperno	1-402	2950	Marquette	B	1,800 00
St. Gabriel...	120005	2 " "	31 " "	A. B. Trudel	P. Gravel	3037	5364	Centre	B	4,000 50
St. Henri....	120006	2 " "	31 " "	A. Lauriant	H. Fichaud	1722-112.....	2208	Beaudoin	B	800 00
"	120007	2 " "	19 " "	A. Dabuc	De E. St. Denis	1704-147.....	2500	Poplar	B	1,050 00
St. Jean Bte..	120013	3 " "	1 Fév. "	De G. W. Upjohn	Z. Mayrand	15-352	2375	St. Denis	B	5,000 00
Ste Marie....	120014	3 " "	30 Jan. "	Z. Mayrand	J. B. Goulet	166-283	2684	Frontenac.....	B	1,500 00
Hochelaga...	120021	3 " "	9 " "	Succ. T. V. Macdonald	De A. Beauchamp	31-56	2184	Davidson.....	B	2,075 00
"	120022	3 " "	9 " "	do	W. Richard	31-57	2184	do	B	2,075 00
Duvernay...	120026	3 " "	31 " "	Succ. L. B. A. Charlebois	De P. A. Gagnon	8-132	2300	Boyer	B	4,400 00
"	120028	3 " "	28 Déc. 1905	De L. Abel	H. Gauthier	10-163.....	2162	St André.....	B	1,900 00
"	120035	3 " "	3 Fév. 1906	J. L. Clément	De L. Brouillette	8-231	2500	Ave. Chr. Colomb	B	3,350 00
St. Jean Bte..	120041	5 " "	3 " "	W. Swift	M. Kilkery.....	14-9 P. S O. 14-10 P. 29-153 29-152	2123	Mont-Royal	B	5,150 00
Hochelaga...	120047	5 " "	3 " "	De C. Trudel & al	A. Charlebois		3947	Aylwin.....	L	1,025 00

{ B—Bâtisse; Building.
L—Lot; terrain vague.

P. TERRAULT,
Régistrare la Ville.—Registrar.

PERMIS DE CONSTRUCTION. — BUILDING PERMITS.

Décernés durant la semaine finissant le 8 Février 1906.

Issued during the week ending the 8th February, 1906.

Date.	No. du Permis. a Permit Number.	Endroit.—Location.		Quartier. — Ward.	Propriétaire: — Owner.	Architectes. — Architects.	Genre. — Description.	Coût. — Cost.
		No.	Rue.—Street.					
Feb. 2	41 R...	472	St. Denis.....	899 sub. 7	St. Louis	Cormier, Isaïe	1 magasin.....	1,000 00
" 2	42 N		Labelle.....	7 sub. 911	St. Denis	Lefebvre, A.	2 logements	1,800 00
" 3	43 N		Albert & Delisle.	741-82-83-84-117-118	St. Henri	The R. E. T. Pringle Co., Ltd.	Factory.....	30,000 00
" 3	44 N		Amherst.....	588	St. Jacques	Bow, Robt.	5 logements.....	2,500 00
" 3	45 N		"	588	"	"	"	2,500 00
" 3	46 N		"	587	"	Kennedy, J. H. ..	"	2,500 00
" 3	47 N		"	587	"	"	"	2,500 00
" 5	48 R	5	Bibeau.....	217	St. Denis	Paré, Frs	"	200 00
" 5	49 R	1898	St. Hubert.....	7-788	"	Thuot, Theo	1 "	950 00
" 5	50 R	45	Napoléon.....	pt. 1056	St. Louis	Desrochers, Julien	2 "	20 00
" 6	51 N		Notre-Dame	226	St. Henri	Preyost Emery ..	2 logs et 1 mag..	3,000 00
" 6	52 N		Cowan.....	8 sub. 190	St. Denis	Paré, A.	1 logement	500 00
" 7	53 N		Wurtele.....	148-1898.....	Hochelaga	Ouellet, Saul.....	1 hangar	200 00
" 7	54 N	rear 245A	Bleury.....	171	St. Lawrence	C. Peverely	1 shed.....	150 00
" 7	55 R	27	St. Bernard.....	pt. 497	"	M. J. McAndrew ..	"	600 00
" 7	56 R	77	Duluth.....	12-6	Duvernay.....	Lalonde, C	2 logements.....	45 00
" 8	57 N		Fabre.....	345	St. Denis	Racine, Albéric ..	1 hangar	150 00
" 8	58 N		Labelle.....	7-906	"	Dorais, Z.	2 logements.....	1,500 00
" 8	59 R	513	Centre.....	4777.....	St. Gabriel	Dansereau, Jos. ..	4 logements.....	1,000 00

a { N.—Nouveaux édifices.—New buildings.
R.—Réparations.—Alterations.

ALCIDE CHAUSSÉ,
Inspecteur des Edifices.—Inspector of Buildings.
Par A. D.

