

Technical and Bibliographic Notes / Notes techniques et bibliographiques

The Institute has attempted to obtain the best original copy available for filming. Features of this copy which may be bibliographically unique, which may alter any of the images in the reproduction, or which may significantly change the usual method of filming, are checked below.

L'Institut a microfilmé le meilleur exemplaire qu'il lui a été possible de se procurer. Les détails de cet exemplaire qui sont peut-être uniques du point de vue bibliographique, qui peuvent modifier une image reproduite, ou qui peuvent exiger une modification dans la méthode normale de filmage sont indiqués ci-dessous.

Coloured covers/
Couverture de couleur

Coloured pages/
Pages de couleur

Covers damaged/
Couverture endommagée

Pages damaged/
Pages endommagées

Covers restored and/or laminated/
Couverture restaurée et/ou pelliculée

Pages restored and/or laminated/
Pages restaurées et/ou pelliculées

Cover title missing/
Le titre de couverture manque

Pages discoloured, stained or foxed/
Pages décolorées, tachetées ou piquées

Coloured maps/
Cartes géographiques en couleur

Pages detached/
Pages détachées

Coloured ink (i.e. other than blue or black)/
Encre de couleur (i.e. autre que bleue ou noire)

Showthrough/
Transparence

Coloured plates and/or illustrations/
Planches et/ou illustrations en couleur

Quality of print varies/
Qualité inégale de l'impression

Bound with other material/
Relié avec d'autres documents

Continuous pagination/
Pagination continue

Tight binding may cause shadows or distortion along interior margin/
La reliure serrée peut causer de l'ombre ou de la distorsion le long de la marge intérieure

Includes index(es)/
Comprend un (des) index

Title on header taken from: /
Le titre de l'en-tête provient:

Blank leaves added during restoration may appear within the text. Whenever possible, these have been omitted from filming/
Il se peut que certaines pages blanches ajoutées lors d'une restauration apparaissent dans le texte, mais, lorsque cela était possible, ces pages n'ont pas été filmées.

Title page of issue/
Page de titre de la livraison

Caption of issue/
Titre de départ de la livraison

Masthead/
Générique (périodiques) de la livraison

Additional comments: /
Commentaires supplémentaires:

This item is filmed at the reduction ratio checked below /
Ce document est filmé au taux de réduction indiqué ci-dessous.

10X	14X	18X	22X	26X	30X
<input type="checkbox"/>	<input type="checkbox"/>	<input type="checkbox"/>	<input type="checkbox"/>	<input checked="" type="checkbox"/>	<input type="checkbox"/>
12X	16X	20X	24X	28X	32X

BANK OF BRITISH NORTH AMERICA.

INCORPORATED BY ROYAL CHARTER.

Paid-up Capital.....£1,000,000 Stg.
Reserve Fund.....£255,000 "

LONDON OFFICE—3 Clements Lane, Lombard Street, E.C.

COURT OF DIRECTORS—J. H. Brodie, H. J. B. Kendall, John James Oster, J. J. Kingsford, Henry E. Farrer, Frederic Lubbock, Richard H. Glyn, Geo. D. Whatman, E. A. Hoare, G. Farrer
A. G. WALLIS—Secretary.

Head Office in Canada—St. James St., Montreal.

R. E. Grindley, General Manager. E. Stanger, Inspector.

Branches and Agencies in Canada—London, Kingston, Fredericton, N.B., Brantford, Ottawa, Halifax, N.S., Paris, Montreal, Victoria, B.C., Hamilton, Quebec, Vancouver, B.C., Toronto, St. John, N.B., Winnipeg, Brandon, Man.

H. M. BRERDON, MANAGER, MAIN STREET, WINNIPEG.

Agents in the United States—New York—H. Stikeman, and P. Brownfield Agts. San Francisco—W. Lawson and J. C. Welsh, Agts. London Bankers—The Bank of England—Messrs. Glyn & Co.

Foreign Agents—Liverpool, Bank of Liverpool Australia, Union Bank of Australia, New Zealand, Union Bank of Australia, India, China and Japan—Chartered Mercantile Bank of India, London and China, Agri. bank, (limited), West India, Colonial bank Paris, Messrs. Marcuard, Krauss et Cie. Lyons, Credit Lyonnais

Bank of Ottawa.

HEAD OFFICE, OTTAWA.

GEORGE BURN, - CASHIER.

Capital paid up.....\$1,000,000
Rest.....\$400,000

DIRECTORS:

James MacLaren, Esq., President. Chas. Magee, Esq., Vice-President.
Alex. Fraser, Esq. Hon. Geo. Bryson. John Mather, Esq.
Robert Blackburn, Esq. George Hay, Esq.

BRANCHES:

Arnprior, Pembroke, Carleton Place and Koevatlin, Ont.
Winnipeg, Manitoba.

AGENTS—Canada, Bank of Montreal; New York, Messrs. W. Watson and A. Lang; London, Eng., Alliance Bank; St. Paul, Merchants National Bank.

WINNIPEG BRANCH: 369 MAIN STREET:

We receive accounts of corporations' manufacturers, firms and individuals on favorable terms.
Interest allowed on deposits.
Sterling and American exchange bought and sold.
Drafts issued on all the principal points in Canada.
Letters of Credit issued for use in Great Britain and elsewhere.
Collections promptly attended to.

F. H. MATHEWSON, MANAGER.

The Western Canada Loan & Savings Co.

CAPITAL, - - - \$1,500,000.00.
RESERVE FUND, - - \$850,000.00.

HEAD OFFICES: Toronto, - - WALTER S. LEE, Managing Director
BRANCH OFFICES: Winnipeg, - - W. M. Fisher, Manager

Moneys advanced upon Farm and City Properties MORTGAGES, MUNICIPAL DEBENTURES & SCHOOL DEBENTURES purchased. Scrip held for use of Clients. Clients' title deeds are not sent out of the Province but are lodged in the Company's vaults at Winnipeg, where they may be examined at all times. Agents at all principal points throughout the Province.
For further information write to the Manager of the Winnipeg Branch.

ROBINSON, LITTLE & CO.

—WHOLESALE—

DRY GOODS,

343 and 345 Richmond St.,
LONDON, Ont.

Complete range of Samples with Andrew Callender, McIntyre Block, Winnipeg.

RUBLEE, RIDDELL & CO

Commission Merchants

AND IMPORTERS OF

Green and Dried Fruits.

15 OWEN STREET,

WINNIPEG

UNION BANK OF CANADA.

HEAD OFFICE, - QUEBEC.

CAPITAL PAID UP - - \$1,200,000
RESERVE FUND - - - 150,000

DIRECTORS:

ANDREW THOMSON, Esq. President. E. J. PRICE, Esq. Vice-President.
Hon. Thos. McGroovy, D. O. Thomson, Esq., E. Giroux, Esq., E. J. Halo, Esq., Sir A. T. Galt, G.C.M.G.
E. K. WBBB, Cashier.

F. L. PATTON, Manager, - - WINNIPEG.

BRANCHES:

Alexandria, Ont. Quebec, Que.
Iroquois, Ont. Smith's Falls, Ont.
Lethbridge, N.W.T. Toronto, Ont.
Merrickville, Ont. West Winchester, Ont.
Montreal, Que. Winnipeg, Man.
Ottawa, Ont.

Foreign Agents—London—The Alliance Bank (Limited). Liverpool—Bank of Liverpool (Limited). New York—National Park Bank Boston—Lincoln National Bank. Minneapolis—First National Bank.

Collections made at all points on most favorable terms. Current rate of interest allowed on deposits.

OSLER, HAMMOND & NANTON

381 MAIN STREET,
WINNIPEG.

Osler & Hammond,

18 KING STREET WEST, TORONTO.

(Members Toronto Stock Exchange)

**BROKERS,
FINANCIAL AGENTS**

—AND DEALERS IN—

DEBENTURES, LAND, &c.

Real Estate Bought and Sold. Money to Loan.

E. B. OSLER. H. C. HAMMOND. A. M. NANTON.

The Barber & Ellis Co'y,

Nos. 43, 45, 47 and 49 Bay Street,

TORONTO, Ont.

Manufacturers of ACCOUNT BOOKS,
ENVELOPES, PAPER BOXES.

Importers of all Grades of Staple Stationery.

—DEALERS IN—

PRINTERS' SUPPLIES,
BOOKBINDERS' MATERIALS AND
BOXMAKERS' REQUISITES.

Gillies' Series of Pens.

NO.	DESCRIPTION.	PER GROSS
202	Railway Pen, fine point.....	40c.
212	Peruvian Pen, medium point.....	70c.
222	Queen Pen, fine point.....	70c.
232	Ledger Pen, fine point.....	70c.
242	Beaver Pen, turned up point.....	65c.
252	Commercial Pen, medium point.....	60c.
262	Electric Pen fine point.....	60c.
272	Public Pen, fine point.....	45c.
302	Falcon Pen, medium point.....	40c.
402	Lorne Pen, extra broad point.....	60c.
502	Windsor Pen, medium point.....	50c.

FOR SALE BY ALL STATIONERS.

WHOLESALE ONLY FROM

BUNTIN, GILLIES & CO.

Wholesale Stationers, Paper, Envelope and Account Book Manufacturers.
HAMILTON, - ONTARIO.

IMPERIAL BANK OF CANADA.

CAPITAL (paid up).....\$1,500,000.00
REST.....\$700,000.00

E. S. HOWLAND, President. T. R. MERRITT, Vice-President
HEAD OFFICE, TORONTO.—D. R. WILKIN, Cashier.

BRANCHES IN THE NORTHWEST.

Winnipeg,.....C. S. Hoare, Manager
Brandon,.....A. Jukes, "
Calgary.....S. Barber, "
Portage la Prairie.....N. G. Lealie, "

BRANCHES IN ONTARIO.

Essex Centre, Niagara Falls, Ingersoll, St. Thomas
Fergus, Port Colborne, Yonge St. Welland,
Galt, St. Catharines, Toronto, Woodstock,
Sault Ste. Marie.

Deposits received and Interest allowed at current rates. Drafts and letters of credit issued available in Canada, Great Britain, United States, France, China, India, Australia and New Zealand.

Municipal and other debentures purchased.
Agents in Great Britain—Lloyds Barnetts & Bosanquet's Bank (Limited), 72 Lombard Street, London, England.
Correspondents—London & Southwestern Bank, Manchester & Liverpool District Banking Co. (Limited). E. W. Yates & Co., Liverpool.

ALLAN, BRYDGES & CO.

BANKERS AND BROKERS,

339 Main Street, Winnipeg, Man

Municipal, School and other
Debentures negotiated.

SCRIP BOUGHT AND SOLD.

Branch Office—CARBERRY, Man.,
R. T. Rokeby, Manager.

INTEREST ALLOWED ON DEPOSITS.

Wm. Ferguson,

WHOLESALE

WINES, LIQUORS AND CIGARS

Permit Orders Promptly Executed

8th Street, - - Brandon

Union Credit and Protective Association

O. E. COLLINS, MANAGER.

For the Collection of Old and Worthless Debts anywhere in the Provinces of the Dominion of Canada or United States.

604 ADELAIDE STREET EAST, - TORONTO.
489 MAIN STREET, - WINNIPEG.
Business and Correspondence Solicited.

GUY ROSS

Investment Broker and Financial Agent.

MUNICIPAL DEBENTURES NEGOTIATED

ROOM 19 CANADA CHAMBERS,

26 ST. SACRAMENT STREET, - MONTREAL.

Robertson, Linton & Co

CORNER OF ST. HELEN AND LEMOINE STS.,
MONTREAL.

Importers of British and Foreign Dry Goods,
Canadian Tweeds, Cottons, Etc.

Complete set of Samples with J. N. ADAMS,
Rooms 14 and 15, Rowan Block, Winnipeg.
(Opposite Queen's Hotel.)

HENDERSON & BULL,
 WHOLESALE COMMISSION MERCHANTS
 ESTABLISHED 1832.
 41 BANNATYNE STREET EAST, WINNIPEG.
 AGENTS FOR
 THE CANADA SUGAR REFINING Co. Ld. Montreal
 Sugars and Syrup.
 THE CANADA JUTE Co., Ld. - - - Montreal
 Jute and Cotton Bags, Twines, Hessians, &c.
 THE EDWARDSBURG STARCH Co., - - - Montreal
 THE DARTMOUTH ROPE WORK Co., - - - Halifax
 Binder Twine, Sisal and Manila Cordage.
 MESSRS. CUDAHY BROS. - - - Milwaukee
 Smoked and Dried Meats, Mess Pork, Lard, &c.
 THE SIMCOE CANNING COMPANY, - - - Simcoe
 Canned Goods.
 THE LONGFORD M'FG COMPANY, - - - Orillia
 Pails, Tubs and Woodware.
 DONBAR, McMASTER & Co. Ld. Gilford, Ireland
 Gilling Nets and Twines.

AMES, HOLDEN & CO., MONTREAL.

The Ames, Holden Company,

WHOLESALE

Dealers in

BOOTS & SHOES,

33 Queen Street,

WINNIPEG

JAMES REDMOND,
 WINNIPEG.

A. C. FLUMERFELT,
 VICTORIA.

Thompson,

Codville & Co.,

WHOLESALE GROCERS,

26 McDermott Street,

WINNIPEG.

JAS. PORTER

W. M. RONALD.

PORTER AND RONALD,

DIRECT IMPORTERS OF

CROCKERY

GLASSWARE

**CHINA
 LAMPS,**

CHANDELIERS,

CUTLERY,

SILVER-PLATED WARE & FANCY GOODS

230 MAIN ST., WINNIPEG,

GROCERS, ATTENTION!

ASK FOR THE CELEBRATED

"Reindeer Brand"

CONDENSED MILK,

Condensed Coffee and Milk

THE BEST IN THE MARKET.

For Sale By All Wholesale Grocers.

—MANUFACTURED BY THE—

Truro Condensed Milk & Canning Co. Ld
TRURO.

HENDERSON & BULL, Agents,
WINNIPEG.

MILLER, MORSE & Co

—WHOLESALE—

Hardware, Cutlery,

Guns, Ammunition,

Du Pont Gun Powder,

ETC.

Princess St., WINNIPEG.

J. H. ASHDOWN,

Wholesale Dealer & Importer of all kinds of

Shelf and Heavy Hardware,

STOVES AND TINWARE,

PAINTS, OILS AND GLASS,

RAILROAD and MILL SUPPLIES,

The Trade furnished with our Illustrated Catalogue on application.

Corner Main and Bannatyne Streets,

WINNIPEG.

Cornell, Spera & Co.,

WHOLESALE DEALERS IN

Mens' Furnishings

SMALLWARES, ETC.

Our travellers are now out on sorting trip. Stock is well assorted yet although many lines are sold out. Special prices in some lines of Goods.

Letter orders receive careful attention. Inspection invited. Orders promptly filled.

27 Portage Ave. East,
WINNIPEG.

H. A. Nelson & Sons

TORONTO —AND— MONTREAL

DIRECT IMPORTERS AND
 WHOLESALE DEALERS

Fancy Goods and Toys.

ALL THE NEWEST NOVELTIES

FROM THE

European and American Markets.

Represented in Manitoba, Northwest Territories and British Columbia, by
 W. S. CRONE.

Mackenzie, Powis & Co.

Have now in Store the most complete range of

INDIAN TEAS

Bought at the late favorable turn in the market.

BUYERS SHOULD EXAMINE.

Also on the way first crop choicest JAPANS together with first crop CONGOUS.

Mackenzie, Powis & Co.,

WHOLESALE GROCERS,

Cor. McDermot & Albert Sts., WINNIPEG

CANADA

STAINED GLASS WORKS

Jos. McCausland & Son, Proprietors.

TORONTO, ONT.

Memorial and other Windows for Churches and Public Buildings.

Household Stained Glass from Original Designs.

British Plate Glass, Bout and Bevelled Glass, ETC., ETC.

J. H. WOODS,

Sole Agent for Manitoba, N. W. T. and British Columbia.

Box 1318. WINNIPEG.

Redwood Brewery

Fine Ales, Extra Porter and Premium Lager.

Most Extensive Establishment of the kind in Western Canada.

ED. L. DREWRY,

PROPRIETOR,

WINNIPEG, - MANITOBA.

Highest cash price paid for good Malting Barley.

The Commercial

A Journal of Commerce, Industry and Finance specially devoted to the interests of Western Canada, including that portion of Ontario west of Lake Superior, the Province of Manitoba and British Columbia and the Territories.

Eighth Year of Publication.
ISSUED EVERY MONDAY

SUBSCRIPTION, \$2.00 PER ANNUM (in advance).

ADVERTISING RATES.

1 month weekly insertion	\$0 20 per line.
3 months, do	0 75 "
6 " do	1 25 "
12 " do	2 00 "
Transient advertisements, 10 cents per line each insertion.	

Fine Book and Job Printing Departments.

Office, 4 and 6 James St. East.

JAMES E. STERN,
Publisher.

The Commercial certainly enjoys a very much larger circulation among the business community of the country between Lake Superior and the Pacific Coast, than any other paper in Canada, daily or weekly. By a thorough system of personal solicitation, carried out annually, this journal has been placed upon the desk of the great majority of business men in the vast district designated above, and including northwestern Ontario, the provinces of Manitoba and British Columbia, and the territories of Assiniboia, Alberta and Saskatchewan. The Commercial also reaches the leading wholesale, commission, manufacturing and financial houses of Eastern Canada.

WINNIPEG, JULY 7, 1890.

Manitoba.

Virden has made application for incorporation.

J. Fletcher, hotel, Binscarth, is giving up business.

July 18th has been appointed civic holiday at Brandon.

J. Hamilton has taken over the Grand Pacific hotel, at Winnipeg.

T. Spence, second-hand dealer, Brandon, is closing up his business.

Mr. Walker has started in the shoemaking business at McGregor.

Stewart & Van Norstrand, general merchants, Elkhorn, have made an assignment.

Geo. H. Rogers & Co., Winnipeg, have purchased the stock of Haley & Sutton, Morden.

Mr. Winder, late of the firm of Smith, Winder & Co., Brandon, has decided to open a livery at that place.

Wood & Co., of Winnipeg, have been awarded the contract of erecting the new Hudson Bay Co. store at Manitou.

The Commercial Bank have purchased property in Minnedosa and will erect a bank building there this summer.

The Reaburn Stock Fair Association are advertising their annual stock fair sale to take place at Reaburn on July 10th.

A recent assessment of Minnedosa shows \$265,000. The rate of taxation will be in the neighborhood of 18 mills on the dollar.

The Portage Milling Company will erect a new elevator at Portage la Prairie this summer. It will have a capacity of \$50,000 bushels.

The Winnipeg authorities have decided to prosecute all persons having signs or awnings on the Main street, unless certain provisions are complied with.

Brandon merchants are signing a petition asking that a postal service be established by the postoffice authorities on the local train running between Winnipeg and that place.

After the 1st of July a daily mail service will be established between Winnipeg and Doloraine—three times a week by postal car and three times by baggage car. At present the mail service is tri-weekly west of Manitou.

The second farmers' excursion from Toronto arrived in Winnipeg on June 27. There were 169 excursionists in the party altogether. A considerable number of them were going to Calgary and the balance to intermediate points.

Waghorn's Guide for July has been issued. This handy little publication is full of information, as usual, of value to the travelling public. Railway and steamship time tables and rates, particulars concerning mails, and a large variety of features make up its pages. Certainly a handy reference for travellers.

Following are the successful tenderers for supplies to the Stony Mountain penitentiary in Manitoba: Groceries, coal oil and mess pork, A. Perry; hardware, G. D. Wood & Co.; drugs and medicines, J. F. Howard & Co.; dry goods, Wright Bros.; leather and findings, S. Wellband; lumber, A. H. Correlli; beef and mutton, John McQuat; flour, feed and bran, Ogilvie Milling company.

The collections for June in the Winnipeg Inland Revenue division were:—

Spirits.....	\$18,314 04
Malt.....	1,961 32
Tobacco.....	9,201 60
Cigars.....	493 00
Petroleum.....	1 80
Methylated Spirits.....	64 93

Total.....\$30,041 69

Alberta.

G. H. Strevel, of Winnipeg, has received the contract for 100 miles of the Calgary & Edmonton railway and left last week for Calgary with his men.

J. D. Quail, furniture and contractor, Macleod, contemplates selling out owing to poor health. The business offers a good opening in the lines mentioned.

The Lethbridge board of trade is working up a scheme of incorporation which will shortly be submitted to the ratepayers for approval and incorporation asked for at the approaching session of the Northwest Assembly.

Beef is reported scarce in Alberta this year, the Calgary Herald says it has not been so scarce in six years and the probabilities are that high prices will be the rule for some time. The fact of cattle being so scarce in Manitoba has a bearing upon prices in Alberta.

In the Calgary court of revision last week G. F. & J. Galt, of Winnipeg, appealed against the assessment on their wholesale stock of groceries which they keep there. D. W. Marsh, their agent, who appeared for them, contended that their goods should be regarded as 'in transit' and no more liable to municipal taxation than goods in cars in the railway yard. John L.

Brown gave evidence to the effect that Galt's stock of goods was of the same character as other stocks in town and that dealers could go to the warehouse and buy in large or small quantities. After some discussion the assessment was confirmed.

T. F. Kirkham, recently in the stove and tinware trade at Lethbridge, was not "sold out," as would appear from a typographical error in reporting the item in this journal a short time ago. Mr. Kirkham has done a successful business at Lethbridge for some years, and he retired from trade of his own free will, for good reasons, the main considerations being health and a good offer in another direction. Mr. Kirkham still resides in Lethbridge, and owns a valuable property there, so that the idea which might have been conveyed by the item in THE COMMERCIAL that his retirement from business had been in the nature of a forced sale, is altogether erroneous.

Harry Taylor, of the Macleod House, Macleod, has undertaken to thoroughly test the agricultural capacity of that district. He procured a section of land adjoining the town and last year commenced farming operations with success, his wheat turning out twenty bushels to the acre, and of fine quality. This was sold for seed to settlers in the district, and a number of samples were sent away, to show what could be done in growing wheat at Macleod. This year Mr. Taylor has about 120 acres in wheat and oats, and a considerable space is given to vegetables. The vegetables have done remarkably well and the earlier varieties are now ready for the table. Almost everything in the vegetable line has been tried with general success. The appearance of the garden would be a surprise to those who imagine that the very choicest vegetables cannot be grown in the district. The guests of the Macleod House will no doubt live high as a result of Mr. Taylor's experiments in farming.

Assiniboia.

R. Overson & Co. have opened a saloon at Medicine Hat.

McCauley, Higgenbotham & Co., general storekeepers, Whitewood, are dissolving.

E. W. Warner, C.P.R. agent at Qu'Appelle, has removed to Prince Albert and will take charge of the company's office there.

A train load of steers from Calgary, destined for England, passed through Medicine Hat recently. These animals will be fattened in England for the Christmas beef trade.

The Merchants and Imperial banks, and the Dominion Express Co's agent at Moosomin, sent large parcels of American silver to St. Paul last week. It is expected that within a very short time the country will be rid of foreign currency.

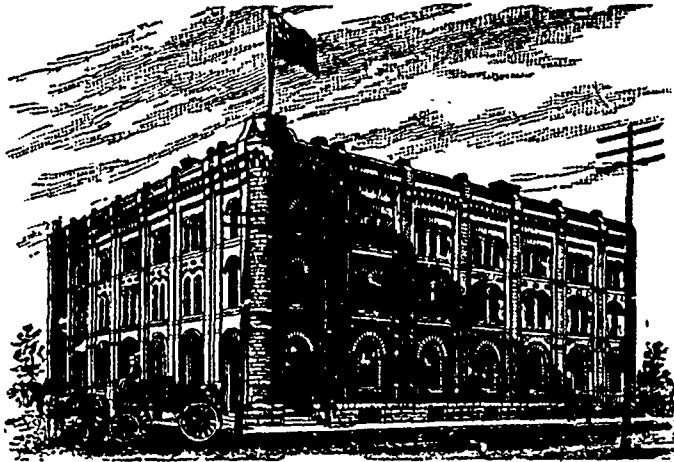
Northwestern Ontario.

Arrangements are being made to light Rat Portage by electricity.

A farmers' club has been formed by the settlers in the Rainy River district.

Arrangements are now nearly completed to build a direct telegraph connection between Duluth and Port Arthur.

The Beaver silver mill near Port Arthur, Ont., has re-commenced operations, and is now reducing 30 tons of ore a day.

GOODS SOLD TO THE
TRADE ONLY.GOODS SOLD TO THE
TRADE ONLY.

G. F. & J. GALT,

DIRECT IMPORTERS
TEAS, SUGARS, WINES, LIQUORS and GENERAL GROCERIES
CORNER PRINCESS AND BANNATYNE STREETS, WINNIPEG, MANITOBA.

Looking Lovely.

A representative of THE COMMERCIAL, who made a trip over the Canadian Pacific early last week, found the prairie country between Winnipeg and the mountains looking just lovely. Seldom, if ever, has the prairie region presented a more enchanting appearance. Everywhere the country is fresh and green, and all nature seems to smile. The prairie flowers seem more beautiful than in past years, the bluffs of trees have apparently taken on a deeper green, the grass is making a good growth, and most important of all, the crops everywhere promise an abundant yield. Not since 1882 at least has the country presented a more inviting appearance; and the writer makes this statement from knowledge gained by a trip through the country about every year since the date named.

This favorable condition is of course due to the timely showers which the country has this year enjoyed. In the territories heavy rains had fallen all along the line at intervals during the two or three weeks previous, and pools of water were observed in the depressions in the prairie and the ditch along the railway. At Moose Jaw there were ponds of water in the streets. In the Medicine Hat district the ground has received a thorough soaking. The district about Swift Current and Maple Creek appeared to be the least favored as to the rainfall. In some sections of the Territories the rains came too late to ensure a heavy yield, but some good fields of grain were observed, and splendid samples of vegetables were shown. At Medicine Hat samples of wheat and barley fully headed out and of fairly good length of straw were shown.

In Manitoba everywhere, with the exception of a strip extending eastward from Portage la Prairie, the country looked fine. The rains have not been heavy enough to fill the sloughs, but there has been ample for the crops. After the series of dry years experienced of late, it will probably take several wet seasons to restore the lakes and ponds to their former condition. However, the ditches and depressions in the prairie show considerable surface water in places. Exception, as noted above, is made of a strip of country, commencing at Portage la Prairie and extending eastward some miles.

The recent rains appear to have passed over this district, and the country has rather a dry appearance. There are some good fields of grain, but others show the effect of drought. It is understood that later in the week this district was visited by rain.

The grass has made good progress, and though it will not be a heavy crop, it will be considerably better than last year. The grass will require another fairly wet year to recover its former luxuriant growth, as the root has apparently been impaired by the dry seasons of the immediate past. The stand is thin, and a large area will have to be gone over to get the required quantity of hay. Even then it is likely that some farmers will have to use straw to some extent for feed. At any rate, the lesson of last winter will no doubt teach farmers to hold over their straw, instead of burning it immediately after threshing, as has been the improvident custom in the past.

Along the road settlers were busy breaking new land, and a considerable area of prairie has already been plowed up. The rains have kept the land in good shape for breaking. In a few instances it was noted that farmers had commenced cutting hay.

Medicine Hat.

Medicine Hat the principal town of western Assiniboia, has improved slowly but steadily during the last few years. The number of business places has not been materially increased, but a change is noticeable in the better class of buildings which are gradually replacing the hastily constructed stores and dwellings which have done duty since the establishment of the town. The business men of Medicine Hat are of a friendly and progressive disposition, and they work together for the general good. As a community they are always putting forth efforts for the advancement of the place, and if the Hat does not become a great city, it will not be the fault of the residents, who are certainly doing everything in their power to secure the prosperity of their town and district. The situation of the town, at the crossing by the Canadian Pacific of the South Saskatchewan river, gives it advantages not possessed by any growing western communities. It is also an important division town of the C. P. R., and

WHOLESALE JEWELER.

Manufacturer and Importer of

Watches, Diamonds,
Jewelry, Clocks, Etc.
Tools, Material,
Etc., Etc.

Prices guaranteed as low as any House in Canada. Write for quotations. Call and see us when in the City.

433 and 435 MAIN STREET.

W. F. DOLL,

has railway machine shops, round house, etc.

In the district stock-raising is carried on to a considerable extent, and the industry is expanding. This year there has been plenty of rain, and the crop outlook is good. The railway people, under the direction of Mr. Niblock, divisional superintendent, have surrounded the depot building with a beautiful flower and vegetable garden, which is the admiration of passengers going through on the railway. A large variety of plants and shrubs are growing luxuriantly in the garden, giving an inviting aspect to the surroundings. A fine new hospital building was completed and occupied last spring, a work which was also undertaken largely through the efforts of Mr. Niblock.

In matters of business there has not been much change of late. H. S. Scatcherd, hardware, sold out recently to F. H. Dowding, who recently arrived from Ontario, and decided to locate at the Hat. S. S. Lloyd, shoemaker, formerly of Canmore, has also recently located here and has opened a shop in his line. He contemplates putting in a stock of boots and shoes, in addition to doing custom work.

The American Hotel is about to change hands, Mr. Cowles, the present lessee, being about to retire. The hotel is being overhauled from cellar to garret. New floors are being laid, new plastering throughout, new furniture will be put in, and two large sample rooms are being prepared. When the hotel comes under new management, as it will shortly, it will be in first-class shape.

A writer in the *Dry Goods Bulletin* says of the present fur trade situation: "The early opening of a manufacturing fur season has not within our recollection shown greater promise than is noticed in this branch of trade at present. The demand for shoulder capes last year and the belief in an increased sale the coming season have made this little garment a most important one to manufacturing furriers. Seal skin makers are likewise busy on jackets, wraps, and other small garments, the outlook for the sale of which is excellent. There have been many new styles introduced. The men are out on the road and doing well. The fur trade has cause for congratulation over the outlook."

W. D. PETTIGREW & CO.

WHOLESALE

—DEALERS IN—

Plaster of Paris,
Plasterer's Hair,
Wheelbarrows

SEND FOR PRICES

528 Main Street,
WINNIPEG.

STEWART HOUSE

COR. MAIN & ELLIS STS., MANITOUBIA, MAN.
First-Class in every respect! Re-fitted! Re-furnished
Good Table! Good Rooms! Three best Sample Rooms
in the Province.
ROUNTREE & CONNOR, Proprietors.



LAKE OF THE WOODS MILLING CO.

The most perfect Flouring Mill in Canada. CAPACITY 1,600 BARRELS A DAY.

Barrel Factory at the Mill and Grain Storage Capacity of 550,000 bushels in addition to which a system of handling Elevators are now being constructed throughout the Northwest.

All Grades of HARD WHEAT FLOUR in Barrels and Bags.

FOR QUOTATIONS AND OTHER INFORMATION APPLY TO THE MILLS,

KEEWATIN, - ONTARIO.

THE DARTMOUTH ROPE WORK COMPANY
HALIFAX, Nova Scotia.

==== THE LARGEST CORDAGE FACTORY IN THE DOMINION. ====

Manufacturers of **CORDAGE** of Every Description.

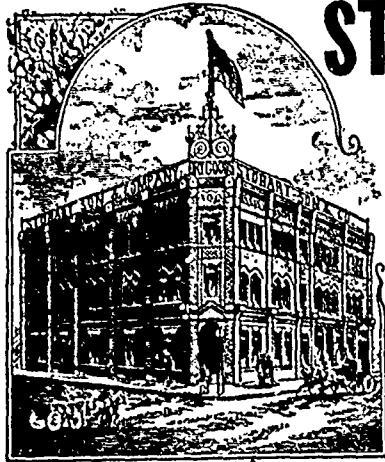
ALSO SOLE MANUFACTURERS OF THE CELEBRATED

Blue Ribbon Binder Twine

Head Office: HALIFAX, N.S.

SOLE AGENTS FOR MANITOBA AND NORTHWEST:

HENDERSON & BULL,
41 Bannatyne Street East, - WINNIPEG



STOBART, SONS & CO

—WHOLESALE—

DRY GOODS

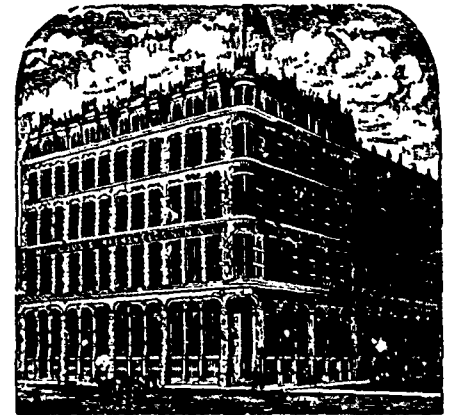
WINNIPEG, Man., and LONDON, Eng.

FALL, 1890.

Travellers are now out with Fall and Winter Samples.

∴ ALL NEW IMPORTATIONS.

Kindly receive your orders till you see them.



S. GREENSHIELDS, SON AND CO.,

GENERAL

DRY GOODS,

17, 19 & 21 Victoria Square and 730, 732, 734 and 736 Craig Street, MONTREAL

Complete Set of Samples with

C. J. Redmond,

Also with Donaldson's Block, WINNIPEG;

Wm. Skene, Van Horne Block, Vancouver, B.C.

Standard OIL Company

(UNITED STATES)

The Best Lubricating and Illuminating Oils Manufactured.

74° Deodorized Gasoline for Stove Use of the best and only reliable article made.

ALL PRODUCTS OF PETROLEUM IN STOCK.

D. WEST, Agent, Office: Western Canada Loan Building.

Room 8, Corner Portage Avenue and Main Street, WINNIPEG.

JAS. McCREADY & CO.,

WHOLESALE

Boot and Shoe Manufacturers,

MONTREAL.

SAMPLE ROOMS, 496 MAIN ST. WINNIPEG
W. WILLIAMS, AGENT.

MILLS & McDOUGALL,

(LATZ MILLS & HUTCHISON)

MONTREAL.

CANADIAN WOOLENS, IMPORTED WOOLENS AND TRIMMINGS.

Represented in Manitoba, Northwest and British Columbia by MR. G. H. SIMPSON.

GOLD, WHALES & HONEY.

Honey in Manitoba,
Whales in Hudson's Bay,
Gold in British Columbia
And rich nuggets all through

The Colonist.

A mine of curious and interesting reading.
Have you seen it? A 32-page illustrated magazine on fire paper. A perfect guide to Western Canada from Lake Superior to the Pacific Ocean.

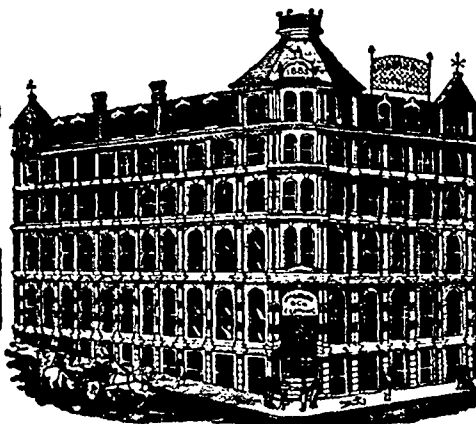
SEND TEN CENTS FOR SAMPLE. STAMPS TAKEN.
Address:—THE COLONIST, Winnipeg, Can.

Jas. O'Brien & Co.

—MANUFACTURERS OF—

CLOTHING

Montreal and Winnipeg.



HEAD OFFICE AND MANUFACTORY:
VICTORIA SQUARE, - MONTREAL.

OGILVIE MILLING COY,

WINNIPEG.

REGISTERED BRANDS:

Hungarian and Strong Bakers' Flour

—DEALERS IN ALL KINDS OF—

GRAIN AND FEED.

MILLS:

	DAILY CAPACITY		DAILY CAPACITY
ROYAL—Montreal	1800 Barrels	POINT DOUGLAS—Winnipeg	1000 Barrels
GLENORA " "	1200 " "	SEAFORTH—Seaforth, Ont.	300 " "
GODERICH—Goderich, Ont.	1000 " "		

WATEROUS ENGINE WORKS COMPANY LD.

WINNIPEG, Man.

ENGINES AND BOILERS

SAW-MILLS

—AND—

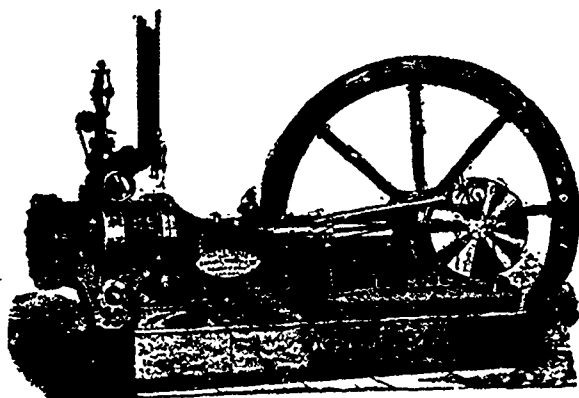
SAW-MILL MACHINERY

ELEVATOR MACHINERY.

SOLE AGENTS FOR

BARNARD & LEA'S ELEVATOR SEPARATORS.

WRITE FOR CIRCULARS.



The Commercial

WINNIPEG, JULY 7, 1890.

THE INDUSTRIAL EXHIBITION.

On Wednesday the ratepayers of Winnipeg will be called upon to vote on the question of granting aid to the extent of \$30,000 to be applied towards furnishing grounds and buildings for an industrial exhibition to be held annually in the city, commencing with the first in September next, and it is to be hoped that no short-sighted considerations of a false economy will be brought to bear for the defeat of the by-law.

In bygone years Winnipeg has expended liberally for much needed city improvements, and for other purposes, nearly all of which were of a purely civic character. The Winnipeg general hospital is perhaps the only great institution which the city has aided greatly in building up, and which is for the benefit of the West generally. In fact, the city has through its council squandered large sums for which the citizens have received nothing beyond experience, that commodity often too dearly bought. In connection with a permanent annual industrial exhibition, Winnipeg is again asked to contribute to an institution which will be for the benefit of the province and territories at large, while it will undoubtedly prove of great value to the city itself. An undertaking which will prove of such value to Winnipeg itself will lose none of its local advantages from the fact that it will place advantages within the reach of other localities, where the people are interested in the common work of building up and developing this great and fertile land we live in. Such "dog in the manger" considerations as the belief that it will, can find no tenure in the minds of a progressive western community, so that from such a source there is no danger of any opposition to the by-law being brought to bear. In fact, there can, in the interests of progress, be no opposition to its passing; and should there be any, it can only come from that small number of parsimonious, poor devils to be found in almost every community, who never can take any pleasure in life that costs a cent, and would try to enforce their own narrow ideas upon others.

Most of our citizens remember that a few years ago Winnipeg could have had the Provincial Agricultural Exhibition located here for ten successive years for a consideration of \$10,000, to be paid to the Provincial Government. Many ratepayers thought that the citizens followed a very short-sighted policy in not taking advantage of that opportunity, and they were right in thinking so. The location of the exhibition grounds at Saint Boniface has proved a failure, as did the changing of its location each year, and has made it plain that only in Winnipeg can an exhibition be carried out with sufficient attraction to insure the patronage of the province generally. Besides, the present movement to establish an exhibition is one made by citizens of Winnipeg themselves almost entirely at their own expense, and will therefore be an institution for the establishment

and carrying out of which the Provincial Treasury will not have to bear the burden, as it had in connection with the unsuccessful attempt made at Saint Boniface. If the citizens of Winnipeg will only take a few such steps, calculated to benefit other portions of the province while benefiting themselves, there would be less of that "frog and the bull" jealousy sometimes displayed towards the city by other less important places in Manitoba.

BUTTER.

The movement inaugurated at Virden, Man., to secure an improvement in the quality of butter, is worthy of special notice. The first feature to attract attention in connection with this movement is, that it is a joint effort on the part of the merchants and farmers. Heretofore any action taken by dealers upon the butter question has almost invariably been looked upon with suspicion by the farmers, and has generally been denounced as an effort to oppress them. When the merchants who met in Winnipeg last winter undertook to consider means of improving the condition of the butter trade of the country, together with other matter, it was evident that the movement was regarded with a great deal of mistrust, and demonstrations were made against the merchants in certain rural districts. Notwithstanding these demonstrations, the proposals endorsed at the merchants' convention, if carried out, would be in the interest of farmers as well as dealers. Owing to this feeling of suspicion so common among farmers, it is pleasing to note that in the case of the Virden movement, the makers as well as the handlers of butter have united in a joint effort to improve the quality of butter. If a similar united movement could be made throughout Manitoba, there would be great hopes for the future of the butter trade of the province. The farmers should be more directly interested in this matter than the merchants, and they should be the first to make an effort to improve the quality of butter, instead of looking with suspicion upon and endeavoring to retard any such efforts.

It is true that heretofore there has not been much in the manner the butter trade of the country has been handled to encourage farmers to endeavor to attain the best results as to quality in making butter. The custom of taking all qualities of butter at one price, which has prevailed to such an extent, has been alone sufficient to ruin the butter trade of the country. To a considerable extent, therefore, the merchants are to blame for the quantity of poor butter marketed. Now that the quantity of butter made in the country has increased to such an extent that the article has become a drug on the market, at least so far as medium and poor qualities are concerned, it has become necessary to put forth a strong effort to remedy the evil features into which the trade has fallen. Let the merchants do their part to encourage the making of good butter, by buying according to quality and insisting upon proper care in packing and handling. If, as in the case of the movement at Virden, they can induce the farmers to co-operate with them in an organized effort, with a definite plan of action in view, to secure the desired result, so much the better. Under such joint action success would be

achieved in half the time, and by uniting the farmers in the movement, there would not be ground for that suspicion with which movements by merchants alone have been regarded by farmers. THE COMMERCIAL would suggest that the committee having the matter in hand at Virden, should publish a full report as to the working of their plan and the results attained under it, so that it could be applied to other parts of the province if thought desirable.

There is every indication that the present year will be one of unprecedentedly low values in butter, and merchants will be obliged to exercise unusual care in handling the article, if they are to get through without loss. Quality is therefore of first importance in the present condition of the butter trade. Anything but best quality is likely to be practically unsaleable this season. The existing conditions point to very low values for butter in all the leading markets, both in Canada and the United States. It has been stated on reliable authority that eastern makers are offering to lay down creamery butter at Vancouver at 20c per pound. This statement is in keeping with the general conditions of the situation in butter, and Manitoba merchants will require to exercise every care in buying and handling butter this year, if they are to come through the season without loss.

FAILURE CERTAIN.

From recent information it appears that already the organization commonly known as the "Kay Farming Company," which started out with a great flourish of trumpets a year or two ago, has met with severe reverses. THE COMMERCIAL predicted at the time the company was organized, that it could not be conducted successfully on the lines laid down at that time by the management. In fact, to those who knew anything about the conditions ruling here, it was a foregone conclusion that failure would result from efforts put forth in the direction indicated by the head of the concern.

The Canadian Agricultural, Coal and Colonization Company, the organization to which reference is made, started out with the intention of carrying on farming and stock raising on an immense scale, in the Territories. Large tracts of land were secured at points along the Canadian Pacific railway, between Regina and Calgary, and Sir Lester Kaye, by whose name the concern has been popularly known, was placed in charge as general manager. The first announcement of the titled manager was to the effect that he would conduct the concern as an English institution, and in a manner befitting an English enterprise of the kind. This announcement was alone sufficient to seal the fate of the Canada Agricultural, Coal and Colonization Company. Its high-sounding name would not save it from the fate of similar enterprises previously undertaken in this country. The experiment of farming in Canada on English principles has been tried frequently, and as often has resulted in failure. Herein lies the great disadvantage which Englishmen have had to contend with in becoming prosperous Canadian farmers. It appears to be a most difficult matter for them to conform themselves to the requirements of

the country, consequently they fail through their persistency in endeavoring to work on English principles, while others who start out with as little knowledge of the conditions ruling here succeed, owing to the fact that they are willing to adapt themselves to the changed conditions ruling here and learn of others who have been here before them.

This was the mistake of the management of the "Kaye" company at the outset. Very soon the company and its manager became the talk and then the laughing stock of all Western Canada. The most ridiculous moves were made, and large expenditures were incurred in experiments and undertakings which to say the least were of an eccentric nature. It was apparent from the start that it would only be a question of time when a change in the management would have to be made, or the enterprise abandoned entirely. To hold out long under such management the company would require to have a mint of money.

It now appears that the "Kaye" management has reached the end of its rope. At the recent general meeting of the company, held in London, England, it was shown that a large sum of money would have to be raised to meet liabilities incurred. The directors were obliged to put up £30,200 "in order" as the report says "to meet the pressing liabilities of the company, and enable the present season's 'corn' crop to be harvested." The directors seem to have considerable faith left in the enterprise, for in return for this advance they have agreed to accept second mortgage bonds at par. This sum is in addition to £40,000 raised about a year ago on second mortgage, to secure which the directors were obliged to pledge their personal security. This is evidence that so far as the directors are concerned they are doing everything in their power to successfully carry on the company. The expenditure incurred at the outset by the management was on an enormous scale, and the capital which it was expected would be sufficient for all necessary investments for a number of years, was all expended in less than twelve months. Sir Lester Kaye has now resigned the management of the company, and Mr. Richardson, a director, is now in the Territories to assist in reorganizing the company, "with a view to securing every possible economy." What the management of the concern in future may be time will show, but anything approaching a continuation of the "Kaye" tactics will certainly result in disaster for the company.

While this farming enterprise has secured the expenditure of a very large amount of money in the country, it is very doubtful if it will be of any permanent benefit. In fact, the unsuccessful operations of such a concern, through mismanagement, is calculated to do the country a great deal of harm. Already the directors spread abroad in their report statements very damaging to the country, which are given as reasons for the misfortunes which have overtaken them. Conducted as the "Kaye" farming enterprise has been from the start, quick disaster would certainly follow under the most favorable conditions. As already stated, Sir Lester Kaye's remarkable way of conducting the enterprise has made him the laughing stock of Western Canada. His

name has been handed around as the butt for many a joke, while the people have wondered how long the shareholders would be able to stand his ridiculous and extravagant ways of doing business. Anything but failure under such circumstances would be a surprise. The trouble is, that while those on the spot know the causes of the disaster, outsiders are likely to put the blame upon the country.

MERCANTILE AGENCIES.

Western legislators often display an extent of courage and even daring in legislating upon such upsetting usages which older representative bodies from notions of conventionalism are afraid to touch, and an instance of this is furnished in the action of the new South Dakota Legislature which recently passed a law to compel each mercantile agency doing business in the State to deposit \$50,000 with the State Treasurer, which is to be held in trust, to satisfy all suits for damages brought against the agency by parties who have been misrepresented and thereby injured by reports of the agency. Such a piece of legislation is certainly a certificate of boldness and daring, but opinions differ widely as to its being a piece of wise or prudent legislation.

In older countries a few mercantile agencies have as a rule such a hold upon the business community that they are considered privileged institutions, possessed of a right to pry into and report on the affairs of mercantile men, in a manner which would be considered very impudent if not actually mischievous on the part of any other institution or individual. A great many business men look to some such agency as a kind of commercial father confessor, into whose ear they are safe to pour what they would withhold from any other person or institution, and it must be admitted that with at least two of the leading agencies on this continent such confidence is but seldom betrayed or perverted to other uses than the one for which it is asked or given. But it must also be admitted that at rare intervals cases do crop up in which the privileges accorded to mercantile agencies are badly abused by them, and in a manner which inflicts undeserved injury upon men, firms and corporations, who find it very difficult and in some instances impossible to secure any redress. Our readers are familiar with what occurred recently in connection with Dun, Wiman & Co.'s report on the city of Vancouver, how, evidently without malice on the part of their agent, but out of pure carelessness and negligence a report of the most misleading nature was circulated, calculated to have an almost paralyzing effect upon the business of that growing young city.

It cannot be that the South Dakota Legislature wishes to suppress all mercantile agencies as institutions of no business value, although there are numerous so-called mercantile agencies which it would be well for the business public if they were suppressed. In the case of conscientiously operated agencies it is evidently the intention of the Legislators to provide only for the exceptions to the general conduct of such reliable agencies. Radical as western Legislatures often are, it is, we believe, beyond the desire of the South Dakota one to seek to

abolish such institutions altogether in the new State. Even there the well conducted agency has too firm a hold upon the business structure of the country to be suppressed without causing some inconvenience to the trade of South Dakota. This legislative move is therefore a wise one, in so far as it will crush out of existence the irresponsible agencies, which can be well dispensed with; and to make the legislation consistent, and protect the people of South Dakota fully, it is questionable if the demand for an indemnity deposit from reliable agencies is not a wise and prudent as well as a necessary provision. Mercantile agencies which are financially responsible cannot complain about having to furnish such a deposit, when by so doing they can secure immunity from competition with irresponsible and unscrupulous opponents. If, however, they are not prepared to support these claims to conscientious reporting by a cash deposit, it is questionable if they are actually as valuable accessories to commerce as they claim to be, and usually get credit for being. In a number of states insurance companies with headquarters elsewhere have to make a similar deposit as a security to their policy holders in said states, and insurance is certainly as necessary in a business community as the efforts of mercantile agencies. The latter from usage have been pampered into spoiled children, and object to take the risks, which they have no just claim to immunity from, in following out the lucrative business they have engaged in.

It must be remembered that in a Canadian court and in the courts of several of the United States men have been made to suffer for obtaining credit under false pretences when the credit was given upon the strength of a falsified statement furnished to a mercantile agency by the parties receiving credit. In this manner the law has been brought to acknowledge mercantile agencies as legitimate sources of information for commercial guidance, and thus upheld by law in straightforward business transactions, it is no hardship that the law should demand a guarantee that nothing but straightforward and legitimate means be employed by agencies in the collecting, compiling and circulating of their reports.

This legislation in South Dakota will inaugurate a struggle between law and usage, in which it is not at all certain that the old adage of usage being stronger than law will be verified. It is stated that the two leading mercantile agencies of the United States will refuse to make the necessary deposit in South Dakota, and quietly withdraw all their agencies therefrom. Opinions and fears have been expressed that this will mean the ruin of trade in South Dakota, but of course the opinions are all fossilized eastern ones, supplied by parties who know nothing of the commercial elasticity and adaptability of the new Northwest. Trade in South Dakota will prosper just as well without as with mercantile agencies at work there, once the friction of the charge passes by; and the fears to the contrary may be considered as well founded as those of the cobbler, who on being elected an alderman of his native village, had a suit of steel mail made to wear under his ordinary garments for fear the greatness of his public position might draw the knife of the assassin upon him.

We have been favored with a copy of the Toronto Industrial Exhibition prize list, and judging from the number of attractions mentioned in it we would say this year's exhibition will be more than up to the standard. Copies of the list may be had upon application to H. J. Hill, the Secretary, Toronto.

The summer number of *Grip* is an unusually bright and attractive one. The cover page is well designed, and high class cartoons characterize the edition all through. Its representation of Don Quixote has to be seen to be appreciated. "The logic of the situation" is a cartoon that would be amusing if it were not so true to life.

... TO THE ...

Lumber * Trade.

As Red Cedar is the proper name for the timber of this province that has been commonly called cedar, without the qualifying word RED, I will hereafter designate my shingles and lumber manufactured from this timber as

Red Cedar Shingles --

—AND—

-- Red Cedar Lumber.

... NOW IN STOCK: ...

3 000,000 .: RED CEDAR SHINGLES
100,000 Ft. RED CEDAR LUMBER
FOR SASH AND DOOR FACTORIES.

⊙ PROMPT ⊙ SHIPMENTS. ⊙

G. F. Slater,
VANCOUVER, B.C.

LYMAN, KNOX & CO.
IMPORTERS AND WHOLESALE DRUGGISTS,
MONTREAL AND TORONTO.

JUST RECEIVED DIRECT FROM HYDRA

400 Cases Honey-Comb Sponges.
WRITE FOR QUOTATIONS.

BRITISH COLUMBIA.

Attention this summer is largely directed to the Sunset Province of the Dominion. All those desirous of obtaining information regarding its mines, farm and fruit lands, timber, real estate, or any other subject connected with its resources, are invited to communicate with C. WETHAM & CO., real estate, insurance, mining, financial, mercantile and commission agents, Vancouver, who will take pleasure in replying fully and promptly to all inquiries.

GREENE AND SONS COMPANY

WHOLESALE

Furs, Hats, Robes,

GLOVES, NOCCASINS,

Etc., Etc.

Manitoba Fall Trade, 1890



Men's Furnishings.

Sole Agents in Canada for

Dr. Jaeger's Woolen Underwear. **MONTREAL.**

WHITEMOUTH LUMBER MILLS

David Ross,

—MANUFACTURER OF—

Spruce, Tamarac

AND

Cedar Lumber.

A Specialty made of Tamarac and Cedar
Bill Stuff.

WHITEMOUTH, Man.

GAMERON & KENNEDY

LUMBER
MANUFACTURERS.

WHOLESALE DEALERS IN

Dressed Lumber,

SHINGLES AND LATH.

Norman, - - Ontario.

DICK, BANNING & CO

MANUFACTURERS OF

Lumber, Shingles and Lath,

DOORS AND SASH.

MILLS AT KEEWATIN. OFFICE: OPPOSITE C.P.R.

PASSENGER DEPOT, WINNIPEG.

NORMAN Lumber Mills

H. BULMER, Jr.

MANUFACTURER AND WHOLESALE DEALER

Lumber, Lath,
Shingles, Etc.

NORMAN, Ont.

KEEWATIN LUMBERING & M'FG CO'Y

(LIMITED)

MANUFACTURERS AND DEALERS IN

Lumber, Lath, Shingles, Flooring,
SIDING, SHEETING, MOULDINGS,
CASINGS, ETC.

Saw Mills, Planing Mills and Factory at

KEEWATIN MILLS, Ont.

JOHN MATHER, Manager.

G. F. SLATER,

MANUFACTURER AND WHOLESALE DEALER IN

Red Cedar Shingles

—AND—

Red Cedar Lumber

NOW IN STOCK:

3,000,000 - RED CEDAR SHINGLES.

I make a Specialty of the Manufacture of Red Cedar
Lumber for Sash and Door Factories.

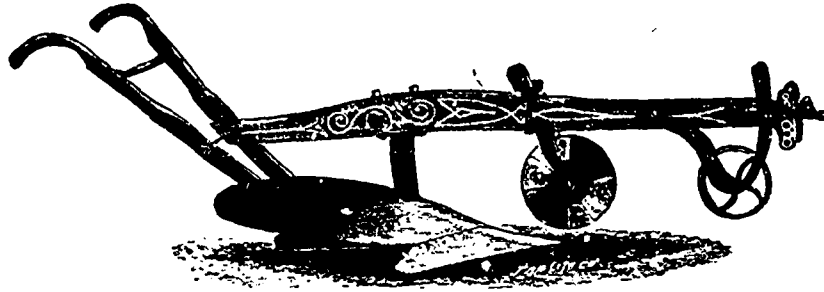
VANCOUVER, - B. C.

PLOWS

There is neither sense nor reason in buying United States made Plows, and paying duty on them, when we can furnish them of Canadian make

BETTER, CHEAPER AND MORE DURABLE.

See ours before you buy any others.



WAGONS

WE ARE NOW HELLING

Contractors & Teamsters

WAGONS

FITTED WITH THE CELEBRATED
**STUDEBAKER WROUGHT
STEEL SKEIN**

The same as used in the Finest American Wagons.

We have always on hand a large Stock of BUGGIES, CARRIAGES, BUCKBOARDS and other Wheeled Vehicles of the Finest Makes.

R. COCHRANE & Co.

39 and 41 Market Street West, **Winnipeg.**

Pure Highland Scotch Whiskies.

JOHN McPHERSON & CO.

THE FAMOUS
LAGAVULIN DISTILLERY,
ISLAND OF ISLAY,
SCOTLAND.

The Lagavulin Whisky is famous for its fine quality, being made from pure Scotch Malt Only, and has long been the favorite beverage of Sportsmen.

It contains no grain spirit, or other Whiskies one knows nothing of, and the most eminent Physicians of the day prescribe it where a stimulant is acquired.

ASK FOR THE LAGAVULIN.

**MACKIE'S
PURE OLD BLEND
10 YEARS OLD.**

GOLD LABEL

AS PATRONIZED BY ROYALTY AND THE LEADING
PHYSICIANS.

ASK FOR IT.

MANUFACTURERS

FINE SHOES

HAMILTON, ONT.

MACKENZIE & MILLS,

WHOLESALE GROCERS

Special attention given to

Teas, Coffees, Canned Goods,

DRIED FRUITS, Etc.

CORNER KING AND ALEXANDER STREETS

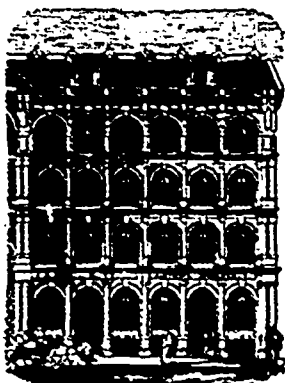
WINNIPEG, MAN.

W. GRANSTON,

Picture Frame and Moulding Manufacturer,

504 Main Street,

Winnipeg, Man.



E. A. SMALL & CO.
MANUFACTURERS OF CLOTHING
WHOLESALE.

Albert Buildings,
Victoria Square, MONTREAL.

Represented by **WM. H. LEISHMAN,**
Sample Rooms, Nos. 50 and 52 McIntyre Block,
Winnipeg, Man.

McALPINE TOBACCO CO.

TRY OUR

"SILVER ASH"

Cut Smoking.

A Strong, Mellow and Lasting Smoke in
10 CENT PACKAGES.

—ALSO OUR—

"Standard Kentucky"

FINE CUT CHEWING

The Superior of any Cut Chewing Tobacco in
Canada.

WORKS: NEW YORK CITY, AND
ESPLANADE, TORONTO

WINNIPEG WHOLESALE TRADE.

The week was a broken one in trade, Dominion Day celebration coming in the fore part of the week. In staple lines, however, this had no bearing beyond the fact it allowed a number to take a holiday. In green fruits the holiday demand was sufficient to about clean out stocks, leaving the market bare for a few days following. In more staple lines business has gone on about as usual. Hardware is steady and without change in prices. Groceries, drugs, dried fruits, leather etc., ditto. In textile lines dealers are now able to calculate about what the season's sorting trade will amount to, as by this date it is considered that a fair estimate can be made. Considerable business may yet be done in this direction, but the bulk of it has probably been done, and the result is generally not in excess of expectations at the beginning of the season, which it may be noted were for a rather light trade.

CLOTHING.

It is now getting on toward the tail end of the sorting season, and already dealers are beginning to figure on shipping out fall stocks. In this broiling weather it seems remarkable that people should be thinking of winter goods, but such is nevertheless the case. For the far northern points, to reach which it takes such a long time, dealers will commence about the first of next month to make shipments, and occasional shipments will thereafter be made until it becomes general. The season's sorting trade has so far been on the light side, but this was expected from the start. The late spring and close financial situation have both contributed to this result. It is now getting late to expect much further demand for summer goods, though the total season's trade may yet be increased considerably by numerous small orders. Large sorting orders are not looked for after this date to any extent. In the matter of fall orders there has been a holding off all the season on the part of the retail trade, owing to the unsatisfactory condition of last year's trade. The good crop prospect, however, is having the effect of gradually changing this disposition. Some, however, are still holding off, and notwithstanding the fact that travellers were unusually early on the road this year with fall and winter samples, it will be considerably later than usual before the bulk of orders have been placed. This has made it more expensive for the houses to work the country, and has also exposed the folly of going on the road for orders long before the goods are required.

FISH.

Stocks of fresh fish have been light, and the variety in the market limited, as dealers have to be careful owing to the hot weather in handling fish. The following varieties are quoted: Salmon, 15c a pound; jack fish, 1c; pickerel 3c; Lake Superior trout, 10c; smoked goldeyes, 40c per dozen; salt whitefish, \$5 per 100 kg.

GREEN FRUITS.

The excessively warm weather which has prevailed for some time back has been a very serious drawback to importers of fruit, as it has made it almost impossible for them to bring in soft fruits in condition for re-shipping. While the warm weather has increased the demand for fruit, it has at the same time caused a good deal of loss through the arrival of fruit in a damaged condition and made it very hard

for dealers to fill orders satisfactorily. The market was left very bare of fruits following Dominion Day, the holiday demand having about exhausted stocks. Oranges were out completely, but small lots are again arriving, and worth \$7.50 to \$8 per box. Lemons have experienced a sharp advance and are strong, with prospects of a further advance. Bananas were also out of the market, but fresh stock arriving are worth about old prices. California small fruits have been scarce, but have now commenced to arrive more freely. Some California pears arrived, but were in poor shape for shipping. Minnesota strawberries commenced to arrive last week. Native wild strawberries were also offering on the market at about \$1.50 per pail. Tomatoes are quoted 25 to 50c lower per crate. Quotations are:—Oranges, \$7.50 to \$8 per box; Messina lemons, \$7.50 to \$8 box; Bananas, yellow, \$3 to \$3.75; do., red, \$2.75 to \$3.50; tomatoes, \$3.25 to \$3.50 crate; watermelons, \$7 to \$7.50 a dozen; strawberries, \$3.50 to \$3.75 per crate of sixteen quarts. California fruits are quoted: Peaches, \$3.50 box; apricots, \$3.25 per crate.

PAINTS, OILS AND COLORS.

Season trade in this branch has not been up to expectations. Orders are fairly numerous, but usually for small quantities, which shows that only such goods as are wanted for immediate use are ordered. There is no immediate change in prices, but there will likely be some to report next week. Linseed oil is easier. Quotations are: Turpentine in barrels, inscribed gage 78c per gallon; turpentine in barrels, guaranteed measurement, or in 5 gallon cans, \$3c gallon; linseed oil in barrels, raw 81c; boiled 84c; benzine and gasoline, 50c; pure oxide paints, in barrels, 90c per gallon; coal tar \$6 a barrel; Portland cement, \$4.90 a barrel; Michigan plaster, \$3.40 a barrel, putty, in bladders, 3½c a pound, bulk in barrels, 3c; whitening in barrels, \$1.50 a cwt; Crown pure white lead, \$7.50; Royal Charter, \$7.00; Railroad, \$6.50; Elephant pure white lead, \$7.50; Elephant No. 1. do., \$6.50; Bulls head do., \$6; Calsomine, \$6 per 100 pounds; Alabastine, \$7.25 per case of 20 packages. Window Glass, first break, \$2.15.

LUMBER.

Dealers report a fairly good demand from the country, the good crop prospects no doubt having its influence in inducing purchases. Cash, however, is slow, and business is being done largely on future prospects. It is noticeable that the quantity of imported lumber coming from Minnesota is considerably less this year than last. Since the discovery of the customs frauds in importing lumber, it has not been as profitable for certain dealers to handle imported stuff. The lower price ruling this year at the mills here also has a tendency to discourage imports. The list price at the mills is as follows. Dimension. 2x4 to 12x12, 12 to 16 ft long, \$14; do. 16, 18 and 20 ft long, \$15, \$1 per M advance on each inch over 12in surface; 50c per M on each foot over the above lengths to 24ft long; \$1 per M advance on each foot over 24ft long; surfacing, 50c per M, surfacing and sizing, \$1 per M. Boards. 1st common, rough, \$16.50, dressed, \$17.50. 2nd common, rough, \$14, dressed, \$15; Culls, rough, \$10, dressed, \$11; 1st common, stock, 12in, rough, \$19, dressed, \$20; do. 8 and 10in, rough, \$18, dressed, \$19; 2nd common, stock, 12in, rough, \$16, dressed, \$17; do. 8 and

10in, rough, \$15, dressed, \$16; 10ft long and under, \$1 less per M. Shiplap: 10in, \$16; 8in, \$15.50; 8 and 10in flooring and siding at \$1 per advance. Siding, ceiling and flooring: 1st, 6in, \$29; 2nd, 6in, \$25; 3rd, 6in, \$21; 4th, 6in, \$18; 1st, 5in, \$29; 2nd, 5in, \$25; 3rd, 5in, \$20; 4th, 5in, \$17; 1st, 4in, \$29; 2nd, 4in, \$25; 3rd, 4in, \$19; 4th, 4in, \$16; \$1 per M advance for dressing on both sides; \$1 per M less for lengths 10 feet and under. Bevel Siding: No. 1, 1st siding, ½ in x 6 in, \$20; No. 2, 2nd siding, ½ in x 6 in, \$17. Finishing (1½, 1½ and 2in): 1st and 2nd clear, \$45; 3rd clear, \$40; selects, \$30; shop, \$25; 1 inch, 1st and 2nd clear, \$40; 3rd clear, \$32; No. 1 stock, \$35; No. 2 do. \$30; No. 3 do. \$25. Mouldings: window stops, per 100 ft lineal, \$1; parting strips, do, 60c; ¼ round and cove, do., 75c. Casing: 4 in O G, per 100 ft lineal, \$1.75; 5in O G, do, \$2.25; 6in O G, do, \$2.50; 8in O G, base, do, \$3.50; 10in O G, base, do, \$4.25. Lath, \$2. Shingles: No. 1, \$3; No. 2, \$2.50; No. 3, \$1.50; No. 4, \$1.

RAW FURS.

Following are the results by cable of C. M. Thompson & Co.'s London fur sales, held on June 23 to 27. Offerings were: Raccoon, about 120,000 skins; muskrat, 200,000; skunk, 200,000; opossum, 20,000; mink, 50,000; gray fox, 12,000, and 18,000 red fox. Prices realized were as follows:—Red fox 7½, beaver 7½, otter 10, white fox 5, and lynx 17½ per cent. lower than in March; fur seal, northwest coast, salted, 15 per cent. higher than in January; skunk, 15 per cent. lower than in March; black bear, northern 20, southern 35, and grizzly bear 15 per cent. lower than in march; brown bear same as in March; raccoon 7½, marten 15, mink 15, gray fox 25, and wolf 10 per cent. lower than in March; opossum, musquash, Russian sable and Amoor sky, same as in March; musquash, spring, in good demand. Messrs. Phillips, Politzer & Co. report: red fox declined 5, beaver 7½, otter 10, lynx 10 per cent.; white fox unaltered. N. W. coast seals advanced 15 per cent. Skunk decline 15, raccoon 10, marten 10, mink 7½, gray fox 15 per cent.; bears and musquash unaltered; opossum advanced 10 per cent.

GRAIN AND PRODUCE MARKETS.

WINNIPEG.

WHEAT.

The wheat situation on this side of the Atlantic has changed very little since our last report was made, although there has been lots of life and flicker in some of the leading markets, and fluctuations in some instances of a rather wild character have been frequent and occasionally unexpected. The see-saw point between bulls and bears seems to be close to where prices now are, and each pulls against the other with determination. Bulls gain confidence with each successive adverse crop report, some of which, especially about the Northwest, are far wide of the truth, and make a vigorous pull up at times, only to be compelled to let go again, after discovering that the load is still too heavy to allow of its being carried with any degree of ease. Bears are working the crop report business also, although it is not a profitable one at all times for them. They had the powerful argument last week of an available supply of nearly 15,000,000 bushels more than at the same time last year, and that is of itself rather too heavy a lift for the bullish element

to hoist up. Still at New York there has been a heavy foreign demand at current prices, from which it is safe to assume, that European buyers consider those prices right to buy at. This export demand prevents any further decline at central markets, and has had the effect of stiffening prices generally, although there has been no decided tendency upward, the grain being only in the retention of a little of the occasional upward spurts, and these are sandwiched pretty well with drops downward. In Chicago for instance, Monday's market was weak, but on Tuesday took a jump of nearly three cents, and closed two cents higher than on Monday, but before the week closed the most of this advance had been lost, and the see-saw level was once more reached. It is, however, to people looking for better prices, an encouraging fact, that in the face of a winter wheat crop now being harvested and about to come to market, and a spring wheat crop within a month of harvest, quotations in futures seem to mount instead of droop, as is customary in the face of a promised crop. It would be foolish, however, to look for any material advance, at the present juncture, as any movement in that direction would be met with determined opposition in central markets, if indeed it did not close the present liberal European demand. In Eastern Canadian markets there has been no material change in the situation, while in Manitoba crop reports serve instead of grain quotations for matters of interest to the trade.

FLOUR.

There is still quite a free demand from eastern points, which promises to continue while present prices are held to; but it is evident that any advance would check business up short. The local trade has been fairly active with prices unchanged. Quotations are as follows: Patents \$2.70; strong bakers, \$2.50; XXXX, \$1.40; superfine, \$1.15.

MILLSTUFFS.

Since the drop in prices, ten days ago, matters have been moving steadily, with a demand about equal to the supply produced by the mills. The following are quotations: Bran, \$10; shorts, \$12.

OATMEAL, POT BARLEY, ETC.

Since last issue there are no changes to report. Prices are steady as follows: Standard, \$2.60; granulated, \$2.80 per 100 pounds; rolled oats, \$3.00 per sack of 90 lbs. Rolled oats are also obtained in 80 lb sacks at \$2.65. Cornmeal is held at \$1.50 per 100 lbs.; pot barley, \$2.75, and pearl barley, \$3.25 per 100 lbs.

OATS

The feeling has been easier during the past week, although there has been no drop in prices. Car-lots of feed oats from the south are quoted at 47 to 48c, while eastern are held about 5 to 6c higher.

CHEESE.

There is still no quantity of local product ready for marketing, and only small lots reach the city. Properly matured cheese would bring 10 to 10½c at present, but once a liberal supply of June made is available no such price will be offered, unless eastern markets improve very much.

BUTTER.

There is still in the city and country indications of a coming glut, although there is now very little of an overplus of choice goods. Prime creamery sells freely at 20c, or an advance of about 2c over what United States creamery can be laid down for in this city. There has also been a better demand for prime dairy, but nothing off in flavor was wanted. Some of the best dairy brought 14c, but most of it went at 13 to 13½c. Medium and low

grades are plentiful, but not saleable in round lots.

EGGS.

There is still a scarcity of really fresh stock, and for such dealers have been paying 13 to 13½c. Some choice imported stock from North Dakota seemed to sell almost as well as local product, but cases from St. Paul and the south are not wanted much since the hot weather set in.

LARD.

Pails of 20 pounds at \$1.25 are principally what are called for, and the quotation of tierces at 9c is purely nominal.

CURED MEATS.

Local cured stock is now pretty low in the city, and imported goods are on the increase. Prices hold steady and are practically unchanged. Quotations are: Dry salt bacon, 10c; smoked, 11c; spiced rolls, 12c; boneless breakfast bacon, 13c; smoked hams plain, 13½c; canvassed, 14½c.

HAY.

The hay market is a dull one at present, and prices are getting down to their old level. Considerable quantities of loose hay is coming in, but it is of a very inferior quality. The best baled brings about \$13 to \$14 on track, while the loose hay sells for \$10 to \$11.

LIVE STOCK.

Beef is beginning to come in in larger quantities now, and the quality is improving. It is bringing 3 to 3½c. Pork is scarce at 6c.

DRESSED MEATS.

Beef is more plentiful and butchers are beginning to feel better satisfied with the outlook. The increase in the supply of beef has caused a drop ½c, it is now quoted at 7 to 7½c for best quality. Pork brings from 8 to 9c, mutton 12 to 12½c, and veal 7 to 8c.

Montreal Stock Markets.

Following were closing quotations on July 4th:

Banks.	Sellerr.	Buyers.
Bank of Montreal	221½	219
Ontario	120	116
Nolson's	169	160½
Toronto	217½	215
Merchants	146	143½
Union	—	—
Commerce	127½	126½
Miscellaneous.		
Montreal Tel	98½	97½
Rich. & Ont. Nav.	63	61½
City Pass. Ry.	195½	194
Montreal Gas	207	206½
Canada N. W. Land Co.	76	72
C. P. R. (Montreal)	82½	82½
C. P. R. (London)	—	83½
Money—Time	7	—
Money—On call	5½	—

Provincial Immigration Office.

The Manitoba Provincial Government Immigration office in Winnipeg is doing good work this year. The office is located immediately opposite the Canadian Pacific depot, and is in charge of Alex. Smith, who is ably assisted by H. McKellar. An officer is present at the depots when the incoming trains arrive, to give any information and assistance required by new comers. A great many prospective settlers step right across to the immigration offices immediately on their arrival, where they are given all information obtainable, or are directed where they can obtain such information as they may require. Prospective settlers can obtain a great deal of information about lands, etc., at the office, and will be assisted to locate. Literature of a varied nature will also be supplied. In fact, the Provincial Immigration office is a place of general information for new comers and intending settlers, and it is

conducted entirely free from that red tape which surrounds so many of the Dominion Government offices, and renders the transaction of business with them neither pleasant nor satisfactory. As many as forty persons have visited the office in a single day, which shows that it is sought after. Assistance is also given to new arrivals in search of work. A large number of men, boys, and domestic servants have been placed in situations. Applications are coming to the office every day for help, from all parts of the province, and these are filled from the list of parties enquiring for work at the office.

In one direction the work of the Manitoba immigration office has been misrepresented. Statements have been made that the agents endeavor to prevent immigrants from going west into the Territories. This is not the case. This is not the policy pursued by the officers in charge. Settlers who come in with the intention of going westward beyond the boundaries of Manitoba, are given every assistance, just the same as those who may have decided to locate in the province, and no effort is made to induce them to change their minds as to their prospective location. All information about the province is gladly given, but it is not the policy pursued to decry the Territories.

A large number of samples of the agricultural products of the country are on view at the office, including samples of grain, seeds, grasses, etc., in bags, bottles and straw; also some stuffed specimens of our wild animals. The samples now on view are from last year's crop, but some new specimens of growing grain are now coming in. The other day three samples were received from Rockwood, just north of Winnipeg. These were a bunch of barley, well headed, and measuring 33 inches in the straw, a bunch of swamp grass six feet high, and a sheaf of ordinary prairie hay four feet high.

General Notes.

An act admitting Idaho as a State has been signed by the President.

The apple crop of Elgin county, Ont., is likely to prove a failure.

The rate of taxation in Toronto has been cut down to 14½ mill on the dollar.

The Canadian Pacific earnings for the week ending June 30th were \$402,000; for the same week last year, \$369,000.

It is now a question between Chicago and Philadelphia as to which is the second city in population in the United States.

Another tunnel is to be constructed under the St. Clair river by the Grand Trunk Railway Company to cost about \$2,000,000.

There is a combine of manufacturers of ammonia in the United States, and the price has gone up from 5½ to 8 cents per pound.

The weavers in the Ontario Cotton Mills, at Hamilton, have gone back to work, accepting the reduction of ten per cent. over which they went on strike nearly two months ago.

Notice is given of the incorporation of the Eastern Electric Company (limited), of St. John, N. B., with a total capital of \$150,000, divided into 15,000 shares of \$10 each. This company, besides supplying power for the street railway will supply incandescent light and conduct the general business of an electric company.

- : - WE HAVE BEEN APPOINTED AGENTS - : -

—FOR—

Manitoba and the Northwest Territories

—FOR—

Upjohn's * Pills.

THE MOST READILY SOLUBLE PILL MADE IN THE WORLD.

Put up in bottles of 100 and 500 each. Pill lists sent to druggists on application.

Our Stock of Patent Medicines is also very complete.

DAWSON, BOLE & CO.,
60 Princess Street, - WINNIPEG.

Why Some Retail Merchants Fail.

The failing of many retail merchants is that they are not the students that they ought to be. They fail to grasp the details of their business. They open their doors, hang out their signs, and think that all they have to do is to wait for people to come in, listen to their wants and supply them over the counters. Every time a merchant allows himself to hold that opinion he commits an error. He should study his business. The doctor keeps up with the times. He subscribes for the medical journals, and he makes it his business to read them carefully. The details of every operation is studied with scrutinizing care. He is on the alert for any new suggestion that may present itself in the statements before him. The builder peruses his architectural journal with the closest interests. It is the merchant who alone of all business neglects this important matter. Many country merchants, and city merchants, too, take a trade paper, but they glance at the contents in a perfunctory manner; they do not read it in the full sense of the word, they are not keeping posted on the changes in the markets, the styles or brands.

It is unfortunate that this is so. The merchant should endeavor to mend his way in this respect. There is much that will be instructive to him in his trade paper, and that will save him money if the counsel is heeded. There is no more important part of the paper than the advertisements. They contain the latest information to the trade. By a failure to read them the merchant may have lost a suggestion that would have brought him profit. Every merchant should make it his business to subscribe for a trade paper and read it carefully. --
Minneapolis Commercial Bulletin.

TEES, WILSON & CO.

70 ST. PETER STREET, MONTREAL.

A FULL ASSORTMENT OF
INDIAN, CEYLON, CHINA AND JAPAN
T E A S.

We make a specialty of CEYLON and INDIAN Teas, and carry the largest assortment of any House in the Dominion.

Represented in Manitoba, Northwest Territories and British Columbia, by
D. C. MCGREGOR, - MCINTYRE BLOCK, WINNIPEG.

Thouret, Fitzgibbon & Co.

BERLIN. NEW YORK. MONTREAL.

FACTORY AGENTS FOR

Exclusive Novelties in Dress Goods, Underwear, Linens, Woolens, Hosiery, Jackets, Embroideries, Buttons, Etc.

Represented by **H. A. DRISCOLL & CO.,**
ROOMS 26 AND 28 MCINTYRE BLOCK,
P.O. Box 179, WINNIPEG.

J. Kuhn & Son,

—DEALERS IN—

BUTTER, CHEESE AND EGGS
FLOUR AND FEED

And Produce Generally. Agents for the
GOLD SPOON BAKING POWDER.
Consignments of Produce and other Goods Sold on Commission and Prompt returns made.
Catharine Block, Alexander St. West
WINNIPEG, - MANITOBA.

JAS. COOPER.

J. C. SMITH

Cooper & Smith,

MANUFACTURERS,

Importers and Wholesale Dealers in

BOOTS AND SHOES!!

36, 38 & 40 FRONT ST. WEST

TORONTO.

S. R. PARSONS. HENRY BELL. W. E. HAZLEY

PARSONS, BELL & CO.,

Wholesale Paper Dealers

—AND—
GENERAL STATIONERS.

AGENTS

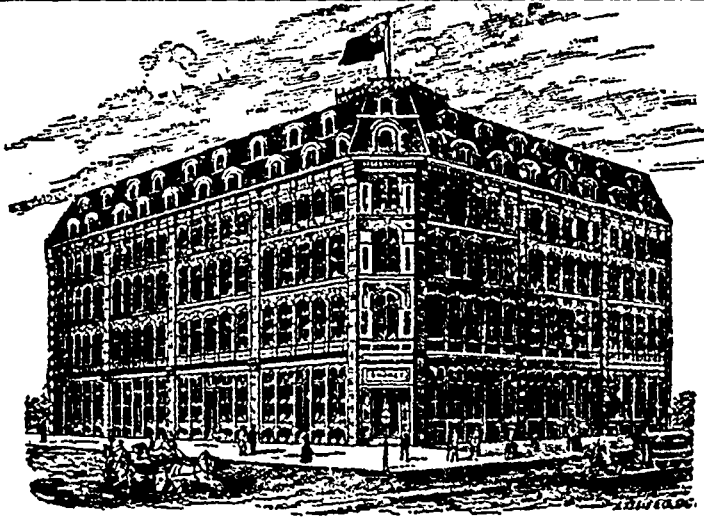
Canada Paper Company,
Manufacturers Printing, Wrapping & Writing Paper &c., Montreal and Windsor Mills, Quebec.

Alex. Pirie & Sons,
Manufacturers Fine Stationery, Aberdeen, Scotland.

M. Staunton & Co.,
Manufacturers Wall Papers, Toronto.

CORNER PRINCESS AND BANNATYNE STREETS,
WINNIPEG.

MEN'S BOYS' AND YOUTHS' CLOTHING
CHILDREN'S CLOTHING A SPECIALTY.



Our Samples for the Autumn and Winter Season, 1890, are now on view at Portage Ave., Winnipeg.

H. SHOREY and CO., WHOLESALE CLOTHIERS,
1866, 1868 and 1870 Notre Dame and 36, 38, 40 and 42 St. Henry St., MONTREAL.



TASSE, WOOD & CO.

Manufacturers of

Fine Cigars,
MONTREAL.

Our Brands: { Reliance Terrier,
Mikado and General
Arthur.

Are unsurpassed by any in the Dominion
Ask your Wholesale Merchant
FOR THEM.

JAMES HAY & CO.

—WHOLESALE AND RETAIL—

FURNITURE

CHILDREN'S CARRIAGES.

REED AND RATTAN.

298 MAIN STREET, { CATALOGUES AND PRICE LIST SENT ON APPLICATION. } WINNIPEG.

MUNROE & CO.,
Wholesale Dealers

Wines, Liquors and Cigars
OF THE BEST BRANDS
9th STREET, - BRANDON

Allen & Brown,
PORK PACKERS,

For Fine Hams, Bacon, Rolls, Long Clear,
Mess Pork, Lard, Bologna and Pork
Sausage Casings, &c., &c.

ALL GOODS GUARANTEED.

70 McDERMOT STREET, - WINNIPEG.

J. Y. GRIFFIN & CO.

Pork Packers and Wholesale
Provision Merchants,

137 Bannatyne St. East, - - WINNIPEG.

Mess Pork, Long Clear Breakfast and Roll
Bacon, Hams, Lard, Butter,
Cheese, Eggs, Etc.

Cash paid for Eggs (egg cases supplied) Con-
signments of Butter or other Farm Produce
solicited and carefully handled. Ample Stor-
age Capacity. Correspondence Invited.

OUR IMITATORS.

Owing to certain dealers attempting to palm off on the public the products of other makers, and representing them to be ours to the injury and reputation of our goods, we have issued the following :-

CAUTION TO THE TRADE
Merchants are respectfully ad-
vised that hereafter all gloves of
our manufacture will be STAMPED
or bear a SILK WOVEN label as below



TRUE BUSINESS PRINCIPLE,
Buy and Sell for Cash!

Provisions and Staple Groceries
Lower than any House in
the Trade.

WHOLESALE ONLY.

SEND FOR QUOTATIONS.

A. McDONALD AND CO.,
228 Main Street, WINNIPEG.

Joseph Carman,

—WHOLESALE DEALER IN—

Fruits, Vegetables, Butter,
EGGS, CHEESE, HONEY, Etc., Etc.

Will be receiving car weekly new Vegetables
of all kinds. California and other Fruits by
express three times a week. Write for prices.
21 Alexander Street West, - - WINNIPEG.

J. S. NORRIS.

JAS. CARRUTHERS

NORRIS & CARRUTHERS,

WHEAT EXPORTERS,

TORONTO and MONTREAL

Open to buy Wheat f.o.b. Cars at any
Station or delivered at Port Arthur
on Sample or Inspector's Certificate.

J. S. CARVETH & CO.,

PORK PACKERS

Sugar-Cured Hams, Breakfast Bacon, Spiced Roll,
Pure Pork Sausage, Long Clear Bacon, Bologna
Sausage, German Sausage, Ham, Tongue
and Chicken Sausage

Figs Feet, Bologna and Sausage Casings.
PACKERS AND COMMISSION MERCHANTS.

23 Jemima St., WINNIPEG.

Chicago Board of Trade Prices.

Wheat sold lower on Monday, the decline was attributed to the desire shown by July longs to dispose of their holdings. An unfavorable foreign crop report did not seem to have any effect on values. The range of prices for August was narrow, July showing the widest of any month. The oat market was quiet and steady. A large speculative trade was done in provisions. Closing figures were :

	June.	July.	Aug.	Sept.
Wheat.....	85	85½	86½	86½
Corn.....	34	34	34½	35½
Oats.....	27½	27½	28½	28½
Pork.....	12.65	12.00	12.30	12.25
Lard.....	5.62½	5.62½	5.77½	6.00
Short Ribs.....	4.90	4.90	5.05	5.15

Wheat was greatly excited on Tuesday, bad crop news from Europe and reports of large sales for export making it take a jump of 2½ to 3c. A large speculative business was done on the upturn. Being the first day of the months a number of deliveries were made on July contract. July ranged at 85½ to 88c., August at 86½ to 89c., and September at 87½ to 89½c. Closing prices for futures were :

	July.	Aug.	Sept.	Oct.
Wheat.....	87½	88½	89	—
Corn.....	34½	34½	35½	36½
Oats.....	27½	26½	26½	26½
Pork.....	12.35	12.00	11.80	—
Lard.....	5.07½	5.82½	5.95	6.05
Short Ribs.....	4.95	5.10	5.22½	—

On Wednesday wheat was strong and higher early in the session but weakened towards the close. The principal feature of the day was the heavy delivery of wheat on July contracts. The highest point touched by the market was 89½ on September. This seems to be the popular month with dealers. August averaged ½ under September. Closing figures were :—

	July.	Aug.	Sept.	Oct.
Wheat.....	80½	87½	88½	—
Corn.....	34	34½	35½	36½
Oats.....	27½	27½	28½	—
Pork.....	12.40	11.85	11.80	—
Lard.....	5.05	5.50	5.92½	6.00
Short Ribs.....	5.00	5.10	5.17½	5.25

Wheat opened lower on Thursday but strengthened on light receipts and bullish cables, closing ½c higher than Wednesday. Closing quotations for futures were :—

	June.	July.	Aug.	Sept.
Wheat.....	—	84½	87½	89½
Corn.....	—	34½	35½	35½-3
Oats.....	—	27½	28½	28½
Pork.....	—	12.30	12.00	11.75
Lard.....	—	5.05	5.12½	5.12½
Short Ribs.....	—	5.05	5.12½	5.22½

Friday being a holiday the board adjourned until Monday.

Minneapolis Market.

Following were the closing wheat quotations on Thursday, July 3 :—

	July.	Aug.	Sept.	On track
No. 1 hard.....	85½	87	—	85½-30
No. 1 northern.....	83½	84½	83½	85-50
No. 2 northern.....	81	82½	—	82-55

Flour—A good demand was reported at a basis of about \$4.55 to \$4.90 for patents and \$3.25 to \$3.75 for bakers.

Bran and Shorts—A steady movement was noted about \$7.75 to \$8.25 for bran; \$9.50 to \$10 for shorts and \$10.75 to \$11 for middlings.

Corn—Sales slow at 32 to 32½c, mostly held at 32c o. t., with some fair lots offered a little under.

Oats—A steady but very quiet business was done at 26½ to 27½c for good samples with choice No. 2 white held ½c or so above.

Feed—Local millers were asking \$13 f.o.b. for No. 1 feed, from pure corn and oats, ground together. Coarse corn meal sold at about \$12.50.

Hay—The hay market continued demoralized. A large crop is expected and few want much supply of old to carry over. New when fine and no heating sold for about \$8.

Macleod.

The people of Macleod, Alberta, are in great expectations of having a railway before long. Macleod, formerly known as Fort Macleod, has been a point of importance since the early days. It was an important trading centre and mounted police post before the construction of the Canadian Pacific, and though towns have been growing up on the railway, Macleod has still held its own, and draws trade from a large stretch of surrounding country. Since the development of the western ranching interest, Macleod has been looked upon as the centre of a large section of the best range country. With these advantages the people expect that as soon as they can secure railway connection their town will rapidly advance. The people are looking in two ways for a railway. The Alberta Railway and Coal Company have a charter to extend their road westward from its present terminus at Lethbridge to the Crows Nest Pass of the Rocky Mountains. Such a line would intersect Macleod. The Calgary & Edmonton railway, upon which construction has recently been commenced, is also expected to reach Macleod in the near future. This road will run northward from Calgary to Edmonton, and the charter also calls for a line from Calgary southward to Macleod. Such a line would run through the very centre of the range country, a large portion of which is also well adapted to agriculture.

It is now a foregone conclusion that a railway will be built through the Crow's Nest Pass of the Rocky Mountains at no distant date. The recent rich mineral discoveries in the pass, including coal, petroleum, etc., have made this pass well known. Those who have explored it say that it affords a very favorable route for a railway through the mountains. A railway through this pass would also be on a direct line with the famous mining district in British Columbia, surrounding the new town of Nelson. It is worthy of note that the Canadian Pacific railway people are now building a short line of railway in the interior of British Columbia, commencing at Sproat, on the Columbia river, and extending to Nelson. This line is ostensibly for the connection of the extensive stretches of navigable water on the Columbia river and tributary lakes, and the Kootenay river and lake, with the object of developing this rich mineral country. This railway is on a line with the Crow's Nest Pass, and it is expected that it will become a link in a railway through the pass, and on to Macleod. The development of this region by such a railway would make Macleod the distributing point for the mountain country lying to the west.

Commercially Macleod has not much more than held its own for the last few years, owing to the disadvantage of not having railway connection, while new towns have been growing up on the railways. Still some improvement is discernible, principally in the direction of new residences, which have been erected to replace older structures. Some additions have also

been made to the business places of recent years, notably a saw mill, and a general store by the Hudson's Bay Company. Macleod is the principal customs port for southern Alberta, and is still an important mounted police post. About 200 men of the force are stationed here.

The saw mill is owned by P. McLaren, of Perth, Ontario. It has a capacity of 10,000 feet of lumber per day of ten hours, and is also supplied with shingle, lath and planing machinery, all run by steam power. Mr. McLaren has a water-power mill of about the same capacity up the river about 30 miles from Macleod. The owner of the mills has an extensive timber limit west of Macleod intersected by the three forks of the Old Man river, thus giving good facilities for floating the logs down to the main stream of this river, on which Macleod is situated. The timber on the limit is composed of spruce, fir and black pine. The spruce logs average from 12 to 20 inches in diameter, and the fir from 12 to 40 inches. The black pine is a heavy, close grained timber, of great strength, and averaging from 10 to 16 inches in diameter. Jas. Nicoll is general manager of the McLaren interest in the Macleod district, which also includes a stock ranche. W. A. Leach is local manager of the mill at Macleod, and Michael Nicoll is in charge of the water mill.

Macleod has about thirty business institutions of one kind and another. The well known firm of I. G. Baker & Co. have a store here and carry a large stock of merchandise of every conceivable kind. The Hudson's Bay Company also have a fine large store and a large stock in charge of Mr. Gigot, formerly with the company in Manitoba. Reach & Baker carry a stock of groceries, flour and feed, and make a specialty of produce, etc. In the hardware line A. F. Grady carries a general stock of hardware, stoves, tinware, paints, oils, glass, etc. Mr. Grady built a new store last year which has doubled his storage capacity and enabled him to enlarge his stock. W. S. Anderton does business as jeweller and watchmaker. R. B. Barnes carries on business in drugs, etc. There are a number of other lines of trade represented, including a private bank. The Macleod Gazette, published by E. D. Wood, is considered one of the best conducted papers in the Territories. There are two good hotels, the well known Macleod House, carried on by H. Taylor, and the Queens, conducted by John Hollies. Though in the Territories where a prohibitory liquor law is supposed to be in force, Macleod is by no means a temperance town. It is estimated that there are fifteen or twenty places selling liquor, and it is by no means an unusual site to see one or more individuals indulging in a first-class jamboree.

Geo. Houston, who has been in business at Stonewall for the last few years, is moving to Cypress River, where he will open up a stove, tin and hardware business. He is a practical tinsmith, which greatly improves his chances of succeeding in this undertaking.

Bradstreet's semi-annual report on the failures in Canada and the United States shows the total failures for the past six months in the United States to be 5,466 against 5,918 last year. The assets were \$30,025,116 against \$32,803,940 last year, and liabilities \$62,667,960 against \$67,411,711. Bradstreet's report shows that Canada had 869 failures this year against 872 last year. The assets were \$3,610,172, and last year \$3,424,613; liabilities \$7,224,503; last year \$7,283,571.

SMITH & FUDGER

50 YONGE STREET,
TORONTO.

WHOLESALE

FANCY GOODS,

Woollenwear, Etc.

Our MR. W. H. SMITH will be at the Queen's Hotel, Winnipeg, early in July, with a full line of Samples, comprising

STAPLES AND NOVELTIES

Selected by our buyer who has just returned from the European Markets.

The Trade are respectfully requested to hold Orders until our assortment is seen.

SMITH & FUDGER

TORONTO.

G. F. STEPHENS & CO.

—MANUFACTURERS OF—

Stephens' Pure Liquid Colors—Various Shades for Interior and Exterior House Painting.

Stephens' Prepared Carriage Paints—In Scarlet, Black and Maroon. These Paints dry with a Rich Gloss and do not require Varnishing.

Stephens' Elastic Enamel—For Household Decorations such as Tables, Fancy Chairs, &c., in a large number of delicate shades.

Stephens' Pure Oxide Paints—(Almost everlasting)—For Elevators, Granaries, Roofs and all Rough Surfaces exposed to the Weather.

—IMPORTERS AND JOBBERS OF—

Window Glass—Ordinary Glazing and Crystal Sheet. Single and Double Strength.

Heavy Polished Plate—Sizes in Stock from 44 to 96 inches Wide.

Ornamental Glass—In almost Endless Variety.

A full Stock of Painters' Supplies including Dry Colors, White Lead, Varnish, Brushes, Etc. Artists' Oil Colors and Brushes.

Plaster Paris, Plasterer's Hair, Portland Cement, Rosin, Pitch, Etc.

MARKET STREET EAST, WINNIPEG.

READ, PONDER AND INVESTIGATE. **MILLERS!** READ, PONDER AND INVESTIGATE

To the Millers of Manitoba and the Northwest:

GENTLEMEN:—The Hercules Manufacturing Co. of Petrolea, Ont., beg to announce that Messrs. Robert Muir & Co. of Winnipeg have been appointed our Agents for Manitoba and the Northwest, who are prepared to give estimates on all kinds of MILL MACHINERY manufactured by us, and also on the remodeling of old mills to our latest improved system.

THE COCHRANE ONE BELT DRIVE, CONTINUOUS TRAIN OF ROLLS, which are now at the head of all others. A saving of 50% in power doing 35% more work. Can not be put out of Train. A more even granulation, giving a larger percentage of Patent Flour, thereby increasing the capacity of the Bolts. This is the mill of the future; all others have to give place to it. Why spend you time and money on Rolls which the millers of the United States and Canada have tried and found wanting and are replacing with the COCHRANE ONE BELT DRIVE.

THE HERCULES WHEAT CLEANING MACHINERY—Guaranteed to do better work in ONE operation than any other will do in FIVE. Removes fuzz entirely from end of berry—something unattempted by any other Scourer.

THE HERCULES PATENT FLOUR DRESSER and a full line of FLOUR MILL MACHINERY and MILLERS SUPPLIES.

Hercules Manufacturing Company,

Petrolea, - Ontario.

Eastern Business Changes. ONTARIO.

J. Compton, barber, Galt, has sold out.
Wilson Bros., Shelburne, have assigned.
James Grey, grocer, Forest, has sold out.
E. J. Bristow, grocer, Bright, has sold out.
James Annett, grocer, London, has sold out.
F. McGibbon, lumber, Strathroy, has sold out.
J. Simpson, hardware, Streetsville, has sold out.
Joseph Ledue, merchant, Berwick, has assigned.
M. Marsden, shoemaker, McKellar, has assigned.
D. D. Ross, merchant, Woodville, has assigned.
J. A. Childs, stoves, London, advertises to sell out.
T. Burns, hotelkeeper, St. Paul's Station, has sold out.
James Boxall, stoves and tins, Port Perry, is selling out.
E. & J. F. Hunt, grocers, London, are quitting business.
Anderson & Harper, general agents, Toronto, have assigned.
Harwood & Lecourt, trunks, Ottawa, are offering to compromise.
W. E. Milner & Co., groceries and grain, Brompton, have dissolved.
McNeil, McLean & Co., general storekeepers, Alvinston, have dissolved.
J. W. McKeown, groceries and shoes, Sutherland's Corners, has sold out.
The Canadian Musical Herald, Toronto; E. C. Coates, proprietor, is dead.

Mrs. Sophia Woodliffe, green groceries, London, has advertised to sell out.

Hughson, Ferrier & Co., spices, etc., London, have dissolved; style now Gardiner, Ferrier & Co.

QUEBEC.

Placide Daoust, grocer, Montreal, has assigned.
G. T. Linde, dry goods, Montreal, has assigned.
T. Garipey & Co., dry goods, Lachine, have dissolved.
Monford & Fredette, traders, Montreal, have dissolved.
R. Monast, general storekeeper, Montreal, has assigned.
H. Charron & Co., coal and wood, Montreal, have assigned.
Howard Pulp Ware Co., Montreal, have been burned out.
Joseph Messier, carriages, etc., East Farmham, has assigned.
G. L. Paradis & Co., general storekeeper, Roberval, have assigned.

NOVA SCOTIA.

A. L. McKenzie, hotelkeeper, Truro, is dead.
Knight & Co., stationers, Halifax, have dissolved.
J. H. Fisher, tailor, Brigewater, has sold out to McPhee & Cook.
Lloyd Manufacturing & Foundry Co., Kentville, were partially burned out.

NEW BRUNSWICK.

Henry Dunbrack, plumber, St. John, was burned out.
Daniel Lund, grist miller and lumber, Aboussahan, has assigned.

Andersor & McLean, general storekeepers, Albert, have dissolved; style now McLean & Co.

General Notes.

J. & J. Taylor, safe manufacturers, Toronto, are erecting a \$10,000 addition to their works, which will be equipped with special machinery for the manufacture of bank vaults and similar heavy work.

The net profits of the Merchants Bank for last year amounted to \$605,363 according to a statement presented at the recent annual meeting. A dividend of 7 per cent. has been paid out of this and \$200,000 of the balance added to the rest account.

It is stated that immense deposits of limestone and cement clay underneath it has been found in the county of Grey, Ont. The deposit is only two miles from the Grand Trunk Railway of Canada, and nine miles from Owen Sound on Georgian Bay. At the present time Canada imports about 100,000 barrels of Portland cement yearly, whilst the United States imports upwards of a million barrels. The new find may considerably decrease these figures.

The Chicago *Journal of Commerce* says: A recent survey made by engineers who were running a railroad line from Vancouver, B.C., to Tacoma, Wash., is said to have brought to light a mountain, between Cowlitz and Natchez Passes, in the Cascade mountains, that is practically a great mass of good coal. The Union Pacific surveyors made borings, and, upon report of the engineers, the officers of the road decided to tunnel straight through the mountain; and it is estimated that the coal excavated will more than pay the entire cost of tunneling and laying rails.

Lethbridge.

The town of Lethbridge, Alberta, is at present attracting a great deal of attention outside, owing to railway construction in the district and prospective activity in coal mining. Lethbridge is the western terminus of the Alberta Railway and Coal Company's railway, sometimes called "The Galt Railway." This is a narrow gauge road, which branches off from the Canadian Pacific railway at Dunmore station, 652 miles west of Winnipeg, and thence runs in a westerly direction, 109 miles to Lethbridge. The road was built in order to reach the coal deposits previously discovered and worked at Lethbridge. The coal was first discovered by the outcroppings along the deep bank of the Belly river, near which the town has been built. The mines were opened in 1882, and during the two following years coal was taken out by steamers down the river to Medicine Hat. This, however, proved an unsatisfactory mode of operating, as the navigation of the river is rather precarious, and the stream is closed by ice for a portion of the year. In 1885 the railway was built to the mines, and since then the mines have been operated steadily, shipments of coal being made to Winnipeg and other parts of the country. At Dunmore the coal is transferred from the narrow gauge road to the Canadian Pacific railway cars. The Lethbridge coal is of a superior quality to any of the other mines operated to any extent in the country, consequently the article has always been in demand. The output from the mines since the railway was built has ranged from 200 to 400 tons per day.

This year a new move is being made which it is expected will greatly increase the output from the mines. A railway is now being built from Lethbridge to Great Falls, Montana. Work is now going on on both sides the international boundary, and the road is to be completed by next September. It is expected that the completion of this railway will open a large market in Montana for Lethbridge coal. The coals now obtainable in that region are of inferior quality to the Lethbridge article, and the latter coal it is expected would have a large sale to the smelters in the Great Falls district and for other purposes. The length of the road from Lethbridge to Great Falls will be about 200 miles, about 80 miles being in Canadian territory. At Great Falls connection with other railways can be had, by which the coal can be distributed throughout the region. The new road will be narrow gauge, similar to the line from Dunmore to Lethbridge.

Extensive preparations are now being made to increase the output of the mines, in preparation for the expected demand from Montana on the completion of the railway. The present output of coal is about 400 to 500 tons per day. Heretofore the coal has all been taken out from an incline shaft, entering the mine from the side of the hill. Three new shafts are now being put down, each shaft having a capacity of about 400 tons of coal per day. These, with the present incline shaft, will make the capacity 1,600 tons per day. The first of the new shafts is now completed and the engines and machinery for operating it have been placed. Coal is now being taken out of this shaft, but it will take a little while to develop it fully. The second shaft is also down to coal, and will soon be in operation. The third shaft is down about 100 feet and will be completed in about three

months. It is expected that by October first the output of the mines will reach 900 tons per day, and by next year the demand from Montana is expected to reach 2,000 tons per day, so that if these expectations are realized, it will be necessary to continue increasing the facilities for putting out coal at the mines. About 400 men are employed in connection with the mines, and this number will be doubled, it is expected, by next fall. A number of new cottages are being erected for the miners. The company owns the houses occupied by the miners. A new powder magazine, to hold 40 tons of powder, is also being erected, and additional machine shops are being established at the new shafts.

The Lethbridge collieries are owned by the Alberta Railway & Coal Company, the same company owning the railway from Dunmore to the mines, and also the railway now being built from the mines to the Montana boundary. At the boundary the railway will be met by a railway being built by a company chartered in Montana. The company was formerly known by the name of the Northwest Coal & Navigation Company, but this name was changed by Act of Parliament. The name "Galt Mines," and "Galt Railway," has been applied as a short term, from the fact that Sir A. T. Galt took an active part in establishing the Company.

The town is named after Mr. Lethbridge, of London, England, who also was a leading promoter of the company. G. H. R. Wainright, late of Winnipeg, is general manager of the railway, and J. Bailey is superintendent. Mr. Stafford is superintendent of the mines, E. T. Galt is general manager of the company.

The company received a grant of 3,840 acres of land per mile from the Dominion Government, to aid in the construction of the railway. This land is granted in alternate townships, the Government reserving the intervening townships. The company will also get a grant of 6,400 acres per mile for 68 miles of the road now being built to the Montana boundary. The lands are being offered at \$1.25 per acre and upward, without conditions, on easy terms. Parties purchasing lands receive a guarantee of five months work each year for three years, from the company. The company owned the townsite of Lethbridge, but the inside lots have now mostly passed into other hands. The remaining lots are held at \$125 to \$200. The lots were sold at \$75 when first placed on the market, but inside property is now held at \$500 to \$1,500 per lot. Coal lands are reserved by the Dominion Government, and held at \$10 per acre. The coal lands owned by the company were purchased at this figure. The land department of the company is in charge of C. A. Magrath. The company owns a timber limit in the mountains, and has a saw mill at Lethbridge. Logs can be floated down the rivers from the timber limit to the mill. The mill is not at present in operation.

Lethbridge is the headquarters for the railway, and a considerable force of men is given employment in the machine shops, round house and offices of the company. The construction of the new road to Montana will necessitate a large increase in the staff employed in connection with the railway at Lethbridge.

The improved prospects for the town in the increased development of the mines and railway extension, caused something of a stir in real estate this spring, and town lots advanced very considerably in value. Up to the present, how-

ever, the town has not felt the effect of the prospective development, but this will come later on. Ordinary commercial lines of business appear to be represented to the full extent of the present requirements of trade. There are four stores doing a general trade, and carrying large stocks. These are I. G. Baker & Co., H. Bentley & Co., J. H. Cavanagh, and Sherlock & Freeman. These stores have all been established since about the opening of the town by the railway. Sherlock & Freeman, who also carry on business at Grenfell, Assa., succeeded to the business established by Botterell. A. McDonald & Co. are a new firm so far as Lethbridge is concerned, but well known throughout the west. This firm has recently bought out the grocery and provision business carried on by J. D. Sibbald & Co., and it is the intention to add a large stock of general merchandise. A new brick building is being erected by the firm as an addition to the present quarters. In the financial line Lethbridge has a branch of the Union Bank of Canada, of which F. R. Goodwin is manager. John Hawley & Co. commenced business about May 1st last in hardware, stoves, tinware, etc., about the same time buying out the tinware and stove business of T. F. Kirkham. A. J. Hipperson also carries on business in stoves, tinware, plumbing, etc. He carries a large stock and has erected a new workshop last spring. In the furniture line John Craig carries a good stock of furniture, undertaking supplies, etc. He is erecting a new workshop and warehouse, and will use his present quarters entirely for show rooms. Those interested in real estate can communicate with J. F. Ritchie, who has an office for that purpose. Mr. Ritchie has the handling of lots on the Higginbotham addition to the town. W. R. McDougall attends to the requirements of the residents in the line of custom shoemaking, while John McNaughton is ready to supply reading matter from his book and news store. A. R. Brady undertakes to furnish the people with the staff of life, and H. Miron supplies the town with meats. The *Lethbridge News* is the name of the local paper, published by T. Saunders. The *News* office claims the best steam press in the Territories. The Lethbridge House, the principal commercial hotel, is owned by Wm. Henderson. The house has recently been placed in charge of C. A. Armstrong, late of Winnipeg, who is making improvements to the building. In addition to the places of business mentioned there are two drug stores, harness shop, jewelry store, fruit stores, lumber yards, several hotels, etc. The medical and legal professions are well represented.

In laying out the town the company reserved a large square in the centre, containing about ten acres of land. The business portion of the town fronts on this square, which is to be permanently reserved as a park. This gives the place a pleasant appearance.

Lethbridge has a board of trade, Dominion Lands office, and is a customs port. The town is not incorporated, but application to this end will be made at the next session of the Territorial Assembly. A census of the place just taken places the population at 1594. It is also a mounted police post, where about 100 men are stationed.

A move is now on foot to erect a new hospital building. Sir A. T. Galt has promised a donation of \$10,000 for this purpose, and a committee has been formed to carry out the enterprise, the intention being to erect buildings to cost at least \$20,000. A company is also being formed with a capital stock of \$12,000, to be known as the Lethbridge building company, for the purpose of erecting a hall, to be used for public purposes.

Furniture and Undertaking House.

M. HUGHES & CO.

WHOLESALE & RETAIL

Furniture and Undertaking Warerooms

315 and 317 Main Street.

TELEPHONE No. 413.

Closest prices given to dealers
Satisfaction guaranteed in every department.

BROWN BROS.,

Wholesale and Manufacturing

STATIONERS,

64 to 68 KING STREET EAST,

TORONTO.

SPECIALTIES.

Account Books Paper—all kinds
Office Supplies Stationery
Wallets, Pocket Books
Ladies Hand Satchels
Pocket and Office Pairs
Leather Goods Binders Materials
Printers Supplies

CIGARS!

Encourage Home Manufactures by smoking

SELECTS, La Rosa and Havana Whips,

—MADE BY—

Bryan & Co

WINNIPEG, - MANITOBA.

STRANG & CO.

Wishart Block, Market St. East,

WHOLESALE GROCERS

AND DEALERS IN

Provisions, Wines and Liquors,

WINNIPEG.

Wm. Ewan & Son,

WHOLESALE CLOTHIERS,

650 Craig St. MONTREAL.

Represented by J. McLEOD, HOLIDAY & BRO., Winnipeg, Man.

SAMUEL HOOPER, DEALER IN MONUMENTS, HEAD Stones Mantle Pieces, Grates, Etc. Special designs furnished on application. Corner Bannatyne and Albert Streets, Winnipeg.

COCHRANE, CASSILS & CO.

Wholesale Boots and Shoes

Cor. Craig & St. Francis Xavier Sts.,
MONTREAL.

Manitoba and N.W.T. Agency: J. M. MACDONALD,
McIntyre Block, WINNIPEG.
British Columbia Branch: WM. SKENE, Van Horne
Block, VANCOUVER.

LYMAN BROS. & CO.,

WHOLESALE

DRUGS AND MEDICINES

Every requisite for the Drug Trade
promptly supplied.

TORONTO, ONT.

RICHARD & CO,

Importers and Wholesale Dealers in

Wines, Spirits and Cigars

365 MAIN STREET,

WINNIPEG.

Chas. Boeckh & Sons,

—MANUFACTURERS OF—

BRUSHES, BROOMS,

AND WOODENWARE.

Our Goods can be had from all the Leading
Wholesale Trade.

JNO. E. DINGMAN, Agent, - WINNIPEG.

PHILP & CO.

Wholesale Fruits

—AND—

COMMISSION.

Just received car California Oranges; Car
Allan's Cider.

Lemons. Potatoes. Early Vegetables.

Open at all times to give highest price for
Fresh Eggs.

Warehouse: COR. KING AND JAMES STS.

P.O. BOX 568.

WINNIPEG, - MANITOBA.

W. R. Johnston & Co.

(Late Livingston, Johnston & Co.)

WHOLESALE MANUFACTURERS

READY MADE

CLOTHING

44 BAY STREET, TORONTO.

W. E. SANFORD M'FG CO., Ltd.

MANUFACTURERS OF

CLOTHING

45 to 49 King St.

Albert Street.

HAMILTON & WINNIPEG.



Home Production

WE MANUFACTURE

BARB WIRE, PLAIN TWISTED WIRE, WITHOUT BARBS

And are Agents for the

Woven Wire Fencing.

We are in a position to fill all orders promptly.
Ours is the only wire manufactured in the Dominion of
Canada on which is found the GENUINE LOCK BARB
A personal inspection will convince you of this fact. Qua-
lity of wire the best ENGLISH BESSEMER STEEL
Every pound guaranteed.

Manitoba Wire Company

Steel, Hayter & Co.

TORONTO,

PURE INDIAN TEAS

Direct Importers of Indian Teas from
their Estates in

ASSAM, DARJILING, KANGRA, CACHAR
SYLHET AND KUMAON.

Indian Teas from the above districts always in Stock.

Samples and quotations on application to

C. M. RUBIDGE, WINNIPEG.

CHAS. R. KING,
Victoria.

FRED. GILLESPIE,
Calgary.

First-class in every Respect.
Appointments Perfect.
Gratuities Reduced.



MONTREAL.

Every Attention paid to
Guests.

NIXON & CO.

Wholesale Dealers in

Boots, Shoes and Rubbers

AGENTS FOR

GOODYEAR RUBBER COMPANY
OF CANADA.

525 Main St., - Winnipeg.

A. WILLIAMS & CO.

40 QUADRA STREET,
VICTORIA, B.C.
Commission -:- Merchants
And Manufacturers' Agents.

All kinds of Produce Handled.
Advances made on Consignments of Butter and Eggs.
Best Market Price obtained for all Goods and Prompt Settlements.

J. & A. Clearihue,

COMMISSION MERCHANTS

—DEALERS IN—
FRUITS AND ALL KINDS OF PRODUCE.
Special attention to consignments of Furs and Skins, Butter and Eggs.
Yates Street, VICTORIA, B.C.
P.O. BOX 536.
AGENTS Skidgate Oil Works, B.C.; D. Richards Laundry Soap, Woodstock, Ontario; Tiller, Bothwell & Co., Montreal, Parisian Washing Blue.
We have a large cool warehouse with good facilities for handling Butter and Produce in quantities.
Consignments Received in all Lines. Correspondence Solicited.

Victoria Rice Mill

VICTORIA, B.C.
CHINA and JAPAN RICE,
RICE FLOUR AND BREWERS' RICE.
WHOLESALE TRADE ONLY.

HALL, ROSS & CO., - Agents.

Lenz & Leiser,

—IMPORTERS AND DEALERS IN—
Foreign and Domestic Dry Goods,
FURNISHINGS, ETC.
SOLE AGENTS FOR
WESTMINSTER WOOLEN MILLS.
Largest and Most Complete Stock in the Province.
Government St. VICTORIA, B.C.

Henry Saunders,

—IMPORTER AND DEALER IN—
GROCERIES AND LIQUORS,
37, 39 AND 41 JOHNSON STREET,
VICTORIA, B.C.

Victoria Steam Bakery

M. R. SMITH & CO.

—WHOLESALE AND RETAIL—
Cracker -:- Bakers,
VICTORIA, B.C.

Capacity 50 barrels of Flour per day. Correspondence Invited.

TO THE TRADE.

Richardson, Heathorn & Jones

SOLE AGENTS FOR BRITISH COLUMBIA
—FOR—
A. A. ALLEN, TORONTO,
Hats, Caps, Furs, Etc.

A COMPLETE LINE OF THESE GOODS.
Vancouver, B. C.

Brackman & Ker,

—WHOLESALE DEALERS IN—
FLOUR, FEED, GRAIN AND PRODUCE
VICTORIA, B.C.

ALL CORRESPONDENCE SOLICITED.

THE ORIENTAL TRADERS CO. LD.

Importers and Wholesale Dealers in Goods of all kinds from Japan, China, Philippine Isles, etc.
Tea, Sugar, Coffee, Hemp, Rice, Manila, Cigars, Brushes, Matting, Umbrellas, Handkerchiefs, Silks, Etc.
EXPORTERS OF CANADIAN PRODUCTS } Vancouver, B.C.

McMILLAN & HAMILTON,

COMMISSION MERCHANTS

—AND WHOLESALE DEALERS IN—
BUTTER, EGGS, FRUITS AND PRODUCE
OF ALL KINDS.
153 WATER ST.—VANCOUVER—P.O. Box 208.

THE VANCOUVER WAREHOUSE CO'Y.

Storage, free and bonded. Forwarding, Commission. Warehouse Receipts Granted. Customs and Ship Brokerage. Insurance on Goods in Store or in Transit.
Agents for Canada Sugar Refining Company, Montreal.
Special advantages for handling Butter, Cheese and Eggs. Correspondence and consignments Solicited. Special arrangements for advances made to regular shippers. An experienced Butcher and Cheese man for the Produce Department.
REFERENCES—C.P.R. and Bank of Montreal.
G. R. MAJOR, Manager, VANCOUVER, B. C.

J. CANNING,

Direct Importer and Wholesale Dealer in
FOREIGN AND DOMESTIC FRUITS
AND COUNTRY PRODUCE.
BAY VIEW, CORDOVA ST., VANCOUVER, B.C.
P.O. Box 711.

WM. KNOX,

Produce and Commission Merchant
VANCOUVER, B.C.
BUTTER, EGGS, CHEESE, ETC.
Foreign and Domestic Fruits.
CORRESPONDENCE FROM MANITOBA SHIPPERS SOLICITED.

To Fish Dealers, Butchers, Etc.

I am now prepared to ship fresh spring Salmon and all kinds of Salt Water fish at lowest market prices. I pack in specially devised boxes, well iced, and my shipments usually give the best of satisfaction. Will ship per express COD unless otherwise specified.

R. V. WINCH,

Wholesale and Export Fish Merchant,
66 CORDOVA STREET,
VANCOUVER, B. C.

THE DRIARD,

VICTORIA, B.C.
The only strictly first-class hotel in the province.

LELAND HOUSE, VANCOUVER,

British Columbia.
The leading commercial hotel of the city. Directly above the C.P.R. Station and Steamboat wharf. All modern improvements. Sample rooms for travellers.
J. E. INSLEY, Mgr. WM. PROUT, Prop.

THE COLONIAL

New Westminster, B.C.
Headquarters for Commercial Travellers. Fine Sample Rooms. First-Class in Every Respect.
GEO. R. RAYMOND, - PROPRIETOR.

QUEEN'S HOTEL,

NEW WESTMINSTER, B.C.
H. G. WALKER, - - Proprietor.

This Fine New House is now open under the above management. Special Accommodation for Commercial Travellers. Best Sample Rooms on the Coast. Largest and Finest House in Westminster.

Grant, Horn & Bucknall,

PRODUCE
—AND—
Commission Merchants,
128 Princess Street, WINNIPEG



CREAMERY BUTTER!
DAIRY BUTTER!!
CHEESE!!!

Heintzman Pianos, Karn Organs and Raymond Sewing Machines ARE THE BEST.

Agents Wanted in Unoccupied Territory.

ADDRESS:

JAS. HADDOCK & CO.,
271 Main Street, - WINNIPEG, Man.

British Columbia.

The restaurant of Steity Bros., Victoria, is advertised for sale.

Barnes & Schofield are opening a furniture factory at Steveston.

The new steam laundry in Victoria will commence business this week.

S. Gray's sash and door factory at Victoria has been damaged by fire.

The Dominion Express Company is establishing an agency at Sproat.

Munroe & Hughes are opening out in the grocery business at Victoria.

The firm of Ross & Ceperley, real estate agents, Vancouver, have dissolved.

A. W. Jones, insurance agent, Victoria, has taken Mr. Bridgeman as a partner.

Mr. Moore is taking charge of the Nanaimo branch of the Bank of British Columbia.

Williams & Co. have opened out in the fruit and confectionery business at New Westminster.

H. A. Munn has resigned the city editorship of the *Victoria Times* to enter into business for himself.

At the Government sale of land held in Vancouver on June 24th, \$52,694 worth of property was disposed of.

Mr. A. A. Munn, formerly editor of the *New Westminster Truth*, has started a new paper at Nelson to be called *The Miner*.

The strike of the Indian fishermen on the Naas River is over, and the canners can get all the men they want at their own figure.

The Victoria trades assembly is agitating for a better enactment of law against food adulteration, and short weights for bread and coal.

At a meeting of the Delta Agricultural Society held recently at Ladner's, it was decided to hold the annual fall fair on Tuesday, September 30th.

Seven carloads of cattle were shipped from interior ranches last week to the coast cities. Two were for Nanaimo, three for Victoria, and two for Westminster.

The Department of Customs have stated that \$7,421 was collected at Vancouver in the month of May for Chinese poll tax. This shows an increase of \$1,346 over the same month of last year.

The Canadian Pacific Railway Company's stores at Donald have furnished during the month of May \$36,000 worth of supplies to the construction of the Columbia and Kootenay railway.

The *Westminster Columbian* says: Every manufacturing establishment in the city is running to its fullest capacity, and there is sufficient work in view to maintain the present high pressure until the end of the year.

A meeting of the stockholders of the New Westminster Gas Co. was held in the company's office in Westminster, on June 28th, to take under consideration the increasing of the capital stock from \$75,000 to \$150,000.

In deference to the wishes of British Columbians, the Minister of Marine will ask for tenders for the construction in that province of a new iron steamer for the Government service in British Columbia. The appropriation for the vessel is \$70,000.

The Provincial Government has ordered a reduction of the fees for assaying, to take effect on the first of July. Single samples of gold, silver, lead or copper will be treated for \$1.50 each, two at \$1 each, and larger numbers at a proportionate reduction.

The steamer *Sardonyx*, belonging to the Canadian Pacific Navigation Company, was wrecked while proceeding from Port Simpson to Skidgate. Her value is \$75,000; insurance, \$50,000. No lives were lost, the crew and passengers being picked up by the steamer *Boscowitz*.

The Kootenay Smelting and Trading Syndicate has made arrangements whereby 1,500 tons of ore can be shipped from Nelson to Revelstoke immediately upon the completion of the Columbia and Kootenay Railway. Afterwards an average supply of 50 tons a day may be relied on.

A company of St. Paul capitalists are making arrangements for the purchase of one-fourth of the stock of the Pacific Bullion Company, which would amount to \$35,000. The mines owned by the Pacific Co. are in the Kootenay region, and they include two very rich claims, the Trinket and Spokane.

At a meeting of the Council of Federated Trades, held in San Francisco recently, a boycott was placed on Dunsmuir and Sons' Wellington coal, and dealers who buy of Dunsmuir and Sons, in consequence of the firm refusing to meet the executive committee which was endeavoring to settle the trouble between the firm and the miners employed by it.

Grain and Milling.

The people of Macleod, Alberta, and district are anxious to secure a flour mill. A bonus of 3,000 bushels of wheat is offered as an inducement to start a roller mill at that place, to have a capacity of fifty or more barrels per day. The matter is in the hands of a committee of the board of trade. Samples of the wheat grown in the district will be sent to any one addressing the board, to show what the country is capable of producing in the wheat line. There is no flour mill within hundreds of miles of Macleod, and the district is becoming well settled, thus ensuring a steady demand for all the flour a small mill could turn out. Wheat has not been extensively grown, for the reason that there is no market for it. It has, however, been successfully grown in the district on a small scale as an experiment mainly. A few cars of Manitoba wheat were brought in last spring for seed, and a number of farmers have

sown some this year to give it a thorough test, though the residents seem convinced already that they can grow good wheat, and that there is no need for further experiment in the matter.

A number of Ottawa bakers have been summoned for selling bread under weight.

A semi annual dividend has been declared by the St. Louis United Elevator Co., of 2½ per cent., payable July 10.

Private warehouses in Chicago are said to hold 760,000 bushels of wheat at this time, 425,000 bushels of corn and 110,000 bushels of oats.

The fact that all grist and flouring mills in the province are now undergoing thorough repairs and being placed in position for night and day work is significant.

The St. Anthony elevator Everest, near Casselton, N. D., was burned June 19th, from being struck by lightning. About 3,000 bushels of wheat were in the building at the time, but a part of it was saved.

An amendment to be offered to the tariff bill was introduced in the Senate, by Senator Hale, on June 19th, which authorizes the president, without further legislation, to declare the ports of the United States free and open to all the products of any nation of the American hemisphere, upon which no export duty are imposed, whenever and so long as such nation shall admit to its ports free of national, provincial, state, municipal and other taxes, a large (specified) number of American products among which are flour, meal and other breadstuffs.

Lumber Outtings.

The Kimball Lumber of Chicago has been incorporated. Authorized capital, \$10,000.

The Land, Log and Lumber company of Milwaukee has increased its capital stock to \$2,500,000.

The mill belonging to the Mille Lacs Lumber Company, located at Milaca, Minnesota, was burned last week. Loss \$100,000.

The Island Sash and Door Factory at Milwaukee, was destroyed by fire on June 24. The loss is estimated at about \$25,000.

Through the breaking of a boom on the Lake of the Woods, near Rat Portage, some nine or ten million feet of logs were let out. Most of them will be recovered near the mouth of the Rainy River.

The Union Pacific Railway Company propose advancing the rates on lumber from Oregon and Washington to points in Colorado, on July 10th. They will likely cause a vigorous protest from the Pacific coast lumbermen.

The largest walnut tree in north Missouri was sold by R. H. Crump of Monroe county to W. Janes, jr., a walnut lumber dealer of Shelby county. The size of this tree is eighteen feet in circumference at the stump, and about seventy feet to the first limb.

A mammoth raft 1,700 feet in length left St. John, N.B. for New York recently. This raft is said to be larger than the famous Joggins raft which caused so much concern to ocean steamships in 1887. It is composed of 17 cigar shaped sections, each 100 feet long, 35 feet wide and 25 feet thick. The Laughlin Towing Company have undertaken to tow it to its destination, which will take 15 to 18 days. According to the Ashburton treaty Americans may cut Canadian timber and tow it into the States free of duty.

The Canada Tea Trade.

The Montreal Trade Bulletin has the following to say of the Canadian tea market. The market is very bare of common and desirable grades of Japan tea, and is in better shape to receive the new crop than at any time during the past fifteen years. There are very few orders, however, going out for these teas, as buyers are depending chiefly on consignments this season, and a good business is anticipated as soon as they arrive. There has been a decline of several cents in Japan, but this is said to have been offset by the advance in the rate of exchange. The Japan teas most in demand in this market range from 14 to 18c per pound for round quantities, the finest to choice grades which run from 25c upward being in very limited request, and at the moment the inquiry therefore is nil, with holders anxious to sell, notwithstanding the reported scarcity of choice teas in the new crop. It is expected there will be a brisk demand for new Japans at prices ranging from 14 to 16c and 18c, as holders appear to be almost entirely out of these descriptions and are anxiously awaiting the arrival of consignments. In black teas there is almost a complete absence in business, although prices continue low in spite of the improvement reported a week or two ago. Green teas are unusually cheap, a decline of fully 2½ per pound having taken place in the London market. Teas that were worth 1s per pound, not long since, are now offered at 10d cost and freight delivered here. Plingsuoyis, it is said, can be had at special bargains, and still the demand therefore is not stimulated. The principal trade in Canada is in Japans, and as soon as the new crop is on the market a lively business is confidently looked for, as both wholesale and retail dealers throughout the Dominion have seldom carried such light stocks as at present.

An Ingenious Way to Promote Savings.

The Detroit Savings Bank—an old-time institution started some time during the "forties"—is about to adopt into practice a very clever device for inducing the habit of saving by children, minors, servants and others, imitated from the English and German systems, and briefly described as follows:—

Adhesive labels, neatly lithographed in colors varying with their denominations, will be issued in perforated sheets like postage stamps and be placed on sale at selected agencies—drug stores, corner groceries and other suitable points. They will be for sums from five cents and upward and each one will bear on its face a receipt from the bank for the amount it calls for. A person wishing to commence depositing will be supplied by the agent, without charge, with a card corresponding in color with the label he desires, divided into twenty spaces. He pays for his label and sticks it into one of the spaces. Probably only labels of one denomination will be allowed on the same card, so as to render counting unnecessary, as a card, when filled with five-cent labels, would represent one dollar, with ten cent ones, two dollars and so on. When the card is full, it can be taken to the bank by the depositor in person or sent through the agent, and deposited as so much cash, a pass-book being then issued in the ordinary way. The agencies may be allowed a small commission, although doubtless many would be willing to take the little trouble involved, on account of the increased custom it would bring to their stores.—*Industrial World.*



THE SHORTEST AND MOST DIRECT ROUTE

EAST, WEST

—AND—

SOUTH.

THROUGH TICKETS AT LOWEST RATES to Toronto, London, Detroit, Buffalo, Montreal, Quebec, Halifax, Boston, New York AND ALL POINTS IN THE EAST, also to St. Paul, Chicago, etc., etc.

\$10 Saved on 1st Class and \$5 on 2nd Class Tickets to Vancouver, Victoria, Seattle, Tacoma, Portland, Ore., San Francisco and all Pacific Coast Points by taking the Canadian Pacific Route.

EXCURSION TICKETS

TO BANFF HOT SPRINGS AND THE PACIFIC COAST ON SALE DAILY.

Palace Dining and Sleeping Cars, Comfortable Day Coaches and Free Colonist Sleeping Cars on all Through Trains.

Leave.	WINNIPEG.	Arrive.
13 20 Daily.	Pacific Express for Portage la Prairie, M. & N.W. Railway Stations, Carberry, Brandon, Qu'Appelle, Regina, Moosejaw, Medicine Hat, Calgary, Banff Hot Springs, Donald, Kamloops, Vancouver, New Westminster and PACIFIC COAST POINTS.	16 30 Daily.
17 30 Daily except Thur.	Atlantic Express for Rat Portage, Port Arthur, Sudbury, Sault Ste Marie, North Bay, Toronto, London, Detroit, Niagara Falls, Ottawa, Montreal, Boston, Halifax, New York and all Eastern Points.	10 50 Daily except Wed.
9 45 Daily.	St. Paul Express for Morris, Groulx, Grattan, Grand Forks, Fargo, Minneapolis, St. Paul, Duluth, Chicago, St. Louis, Detroit, Toronto, Montreal, etc.	12 50 Daily.
b 9 45	Connects with Mixed for Morden, Manitow, Killarney, Deloraine and Intermediate Stations.	12 50 a
a 11 25	Morris, Morden, Manitow, Killarney and Deloraine.	17 15 b
a 11 50	Headingley, Carman, Treherne, Holland and Glenboro.	18 00 b
b 7 50	Stony Mountain and Stonewall.	12 15 b
b 18 00	Kildonan, Parkdale, Lower Fort Garry and West Selkirk.	11 15 c
c 8 00	Niverville, Otterburne, Dominion City and Emerson.	18 00 c

a, Tuesday, Thursday and Saturday; b, Monday, Wednesday and Friday; c, Friday only.

TICKETS { 471 Main Street and C.P.R. Depot, Winnipeg. G. H. CAMPBELL, Ticket Agt. Or at any Regular Station of the Company.

GEO. OLDS, Gen. Traffic Mgr., MONTREAL. D. McNICOLL, Gen. Pass. Agt., MONTREAL. W. W. WYTE, Gen. Sup't, WINNIPEG. ROBT. KERR, Gen. Pass. Agt., WINNIPEG.

The Manufacturers' Life AND Accident Insurance Co's

Head Office: - TORONTO.

Combined Authorized Capital - - \$3,000,000

Incorporated by Special Act of the Dominion Parliament.
Full Government Deposit.

Absolute Security Offered in a Live, Prosperous and
POPULAR CANADIAN COMPANY.

PRESIDENT—SIR JOHN A. MACDONALD, P.O., G.C.B.
VICE-PRESIDENTS—George Gooderham, Esq., President of the Bank of Toronto.
—William Zell, Esq., Manufacturer, Guelph.
—S. F. McKinnon, Wholesale Merchant, Director of the Traders Bank.
JOHN F. ELLIS, MANAGING DIRECTOR.

WM. SCOTT, Provincial Manager, Winnipeg
AGENTS WANTED IN UNREPRESENTED DISTRICTS.



S. A. D. BERTRAND,
OFFICIAL ASSIGNEE

For the Province of Manitoba, under the recommendation of the Board of Trade of the City of Winnipeg.

Insolvent and Trust Estates Managed with Promptness and Economy.
Special attention to Confidential Business Enquiries.

35 PORTAGE AVENUE EAST,
WINNIPEG, MAN.

TO BUTCHERS?

S. Walker & Co.
WINNIPEG.

Axle Grease Works
Pays the highest price for Fat and Tallow All the Year Round.

PROMPT CASH PAYMENT.

WALKER HOUSE.

The most conveniently located Hotel in Toronto.
One Block from Union Railway Depot.
A first-class Family and Commercial House.

Terms from \$2 a Day
DAVID WALKER, PROPRIETOR.

Corner York and Front Sts., TORONTO, Ont.

J. F. EBY.

HUGH BLAIN.

Eby, Blain & Co.

WHOLESALE GROCERS,

COR. FRONT AND SCOTT STS.,

TORONTO.

Represented in Manitoba and the Northwest Territories by JAMES DOWLER, 130 Donald Street, WINNIPEG.

MONTREAL BRASS WORKS.

MONTREAL, P.Q.

Robt. Mitchell & Co

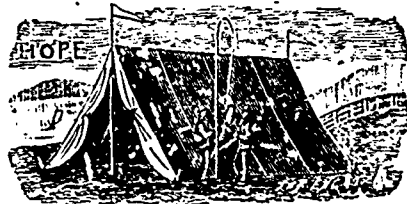
Proprietors, Manufacturers of

Gas Fixtures of Every Description,

Engineers, Plumbers,

Steam & Gasfitters Brass Goods,

Gas Meters and Automatic Fire Extinguishers



HOPE & CO.

—MANUFACTURERS OF—

Tents, Awnings, Mattresses and Horse Covers.

GUN CASES.

9 McWilliam St. East, - WINNIPEG.

NOTHING LIKE LEATHER.

W. N. JOHNSON & CO.,

Importers and Dealers in

LEATHER AND FINDINGS.

Manufacturers of Harness, Collars, Boot and Shoe Uppers, etc.

25 and 27 Alexander St. West, Winnipeg

James Flanagan,

—WHOLESALE DEALER IN—

GROCERIES AND PROVISIONS

—AND—

PRODUCE COMMISSION MERCHANT.

No. 7 QUEEN STREET EAST,
WINNIPEG.

PRICES FURNISHED ON APPLICATION.

KIRKPATRICK & COOKSON

Established 1880,

MONTREAL,

Commission Merchants,

FLOUR, GRAIN, BUTTER, &c.

Consignments and Orders Solicited

Andrew Allan, President. John McKechnie, Superintendent.
P. H. Brydges, Vice-President. H. R. Williams, Sec.-Treas.

THE VULCAN IRON COMPANY,

OF MONTREAL, (LIMITED),

BRASS & IRON FOUNDERS,

Light and Heavy Forgings, Engine and Boiler Works
Millwrighting,

GENERAL BLACKSMITHING,

All Kinds of Machinery.

POINT DOUGLAS AV., WINNIPEG

Toronto Hide & Wool Co

Wholesale Dealers in

HIDES!

SHEEPSKINS AND WOOL

JOHN HALLAM

88 Princess St., WINNIPEG

83 and 85 Front Street East, - TORONTO.
PROPRIETOR.

We will be in the market this season as usual for all classes of Wool, and are prepared to pay the highest market prices.

EVANS BROS.' PIANOS,

Fine Finish, Fine Toned, Easy Touch.

THE UNEQUALLED

Doherty Organ.

Send for Catalogue and Price Lists

AGENTS WANTED.

O. E. MARCY, GENERAL AGENT.
WINNIPEG.

Hodgson, Sumner & Co.

—IMPORTERS OF—

British, French, German and American Dry Goods, Small Wares and Fancy Goods.

347 and 349 St. Paul Street, MONTREAL.

Represented by J. McLEOD, HOLIDAY & BRO.
Commission Merchants, 54 Portage Avenue,
WINNIPEG, MAN.



The transportation committee of the Minnesota Knights of Pythias, Subordinate Lodges, has selected the Wisconsin Central as the official route to the Conclave at Milwaukee. The arrangements with this Company are perfect in every respect, and the special trains on which they will be carried will eclipse anything here before attempted in that line, and will leave Minneapolis Sunday and Monday, July 6th and 7th, at 6.25 p.m., and St. Paul at 7.15 p.m., arriving in Milwaukee at 7.20 the following morning.

Below will be found a synopsis of the programme of events:

MONDAY, July 7th—Assignment to quarters.

TUESDAY, July 8th—Grand Public Reception to Supreme Lodge. Grand Parade of Uniformed Rank, followed by Parade of Uniformed Knights.

WEDNESDAY, July 9th—Commencement of Competition Prize Drill, 9.00 a. m. Grand Field Review, Cold Spring Park, 3.00 p. m. Prize Band Concert, Schilts Park, 7.30 p. m.

THURSDAY, July 10th—Magnificent Fireworks Display, Cold Spring Park, 7.30 p. m.

FRIDAY, July 11th—Prize Drills during the day and Mainmoth Band Concert, Exposition Building, 8.00 p. m.

SATURDAY, July 12th—Awarding of Prizes.

Full information and complete programmes may be had upon application to F. H. ANSON, General Northwestern Passenger Agent, St. Nicollet House Block, Minneapolis; C. E. NIXON, City Passenger and Ticket Agent, 162 East Third Street, St. Paul, or to LOUIS ECKSTEIN, Assistant General Passenger and Ticket Agent, Milwaukee, Wis.

February 1st, 1890, the St. Paul, Minneapolis & Manitoba Railway and Branches became the

Great Northern R'y Line

With 3,370 miles of steel track it runs through 62 counties in Minnesota, North Dakota, South Dakota and Montana, reaching all principal points from St. Paul, Minneapolis, West Superior and Duluth.

It furnishes through close connections, the best and cheapest route to all points in Idaho, Utah, California, Oregon, Washington, British Columbia, Alaska, the Canadian Northwest and Manitoba.

It is the only American line west of Chicago having a track laid with 75 pound steel rail and owning its entire magnificent equipment of elegant Dining and Sleeping Cars, handsome Day Coaches and Free Colonist Sleepers.

It is the only line running through the great Milk River Reservation, with solid trains without change to Chinook, Benton, Great Fall, Helena and Butte.

It has three lines in the Red River Valley, is the only line to the Turtle Mountains and has three lines in South Dakota.

It reaches the largest area of free Government land of agricultural value now remaining in the country.

It is the principal line to Lake Minnetonka and the of Minnesota.

It is the direct route between St. Paul, Minneapolis, Anoka, St. Cloud, Duluth, West Superior, Fergus Falls, Crookston, Moorhead, Fargo, Grand Forks, Grafton, Winnipeg, Devils Lake, Ellendale, Aberdeen, Huron, Watertown, Sioux Falls and Sioux City.

pleasure, fishing and hunting resorts of the Park Region.

For rates, tickets, maps and guides apply to H. G. McMicken, General Agent, 376 Main St., Corner Portage Avenue.

F. I. Whitney, Gen. Ticket and Pass. Agt., St. Paul.

THESE VESTIBULED TRAINS go in service May 15th.

Chicago, St. Paul, Minneapolis & Omaha Ry THE NORTHWESTERN LINE,

The best equipped line to CHICAGO, OMAHA AND KANSAS CITY.

The ONLY line to Chicago running Pullman and Wagner Vestibuled Trains.

These Vestibuled Trains are limited as to time but not limited as to number of passengers. All classes of Passengers carried, with separate apartments for each class, and NO EXTRA FARES.

Trains Eastward will run as follows: Leave Minneapolis 6.50 p.m.; St. Paul 7.30 p.m. Arrive Milwaukee 7.20 p.m.; Chicago 6.50 a.m.

The Sleeping Cars on these trains have been prepared especially for this service, and together with the Vestibuled Dining Cars, Coaches and Baggage Cars are the finest equipped trains of their class in the world.

TICKETS AT LOWEST RATES, and good on these Vestibuled Trains, can be secured at the following offices: St. Paul, 159 East Third Street, Minneapolis, 13 Nicollet House Block, Duluth, 112 West Superior Street, also at St. Paul and Minneapolis Union Depots and at offices of connecting lines. Sleeping car accommodation secured in advance.

NOTE—The above advertised time is the actual running time, and the motto of the Northwestern Line is "ALWAYS ON TIME."

E. W. WINTER, General Manager. F. B. CLARKE, General Traffic Manager. T. W. TESDALE, General Passenger Agent.

Canadians, Attention!

Minneapolis & St. Louis Railway Albert Lea Route

In connection with the Northern Pacific and St. Paul, Minneapolis & Manitoba Railways, will during the months of November, December, 1889, and January, 1890, run a series of

CHEAP EXCURSIONS

To Ontario and Quebec Points. \$40 - FOR THE ROUND TRIP - \$40 TICKETS GOOD 90 DAYS.

Avoid delays and detentions in Chicago and other points by purchasing your tickets via the "Albert Lea Route."

For detailed information call upon your nearest railway agent or write to

C. H. HOLDRIDGE, Gen. Ticket and Pass. Agt., MINNEAPOLIS.

Northern Pacific And Manitoba Railway.

TIME CARD.

To take effect at 6 a. m. Sunday, June 15, 1890. (Central or 90th Meridian Time.)

Table with columns for North Bound, South Bound, Stations, and Time. Includes stations like Winnipeg, Portage Junction, St. Norbert, Cartier, St. Agathe, Union Point, Silver Plains, Morris, St. Jean, Letellier, West Lynno, Pembina, Grand Forks, Winnipeg Junction, Brainerd, Duluth, Minneapolis, St. Paul.

Table with columns for Eastward, Westward, Stations, and Time. Includes stations like Winnipeg Junction, Bismarck, Miles City, Livingston, Helena, Spokane Falls, Pasco Junction, Tacoma, Portland, Portage la Prairie.

PORTAGE LA PRAIRIE BRANCH.

Table with columns for Stations, Time, and Miles. Includes stations like Winnipeg, Portage Junction, Headingly, White Plains, Gravel Pit, Eastac, Oakville, Assiniboine Bridge, Portage la Prairie.

MORRIS-BRANDON BRANCH

Table with columns for Stations, Time, and Miles. Includes stations like Morris, Lowe's, Myrtle, Roland, Rosebank, Miami, Deerwood, Alta, Somerset, Swan Lake, Indian Springs, Maricapolis, Greenway, Balder, Belmont, Hilton, Wawanesa, Rounthwaite, Martenville, Brandon.

Meals. Nos. 117 and 118 run daily. Nos. 119 and 120 will run daily except Sunday. Nos. 5 and 6 run daily except Tuesday. No. 7 will run Mondays, Wednesdays and Fridays. No. 8 will run Tuesdays, Thursdays and Saturdays. Pullman Palace Sleeping Cars and Dining Cars on Nos. 117 and 118. Passengers will be carried on all regular freight trains. J. M. GRAHAM, General Manager, Winnipeg. H. SWINFORD, General Agent, Winnipeg.

Manitoba and Northwestern Ry.

TIME CARD

Taking Effect Monday, June 16th, 1890

Table with columns for Pass Tuesday, Thursday and Saturday, Miles from Winnipeg, Stations, and Pass Monday Wednesday and Fridays. Includes stations like Winnipeg, Portage la Prairie, Gladstone, Neepawa, Minnedosa, Rapid City, Shoal Lake, Hirtle, Binscarth, A Russell, Langenburg, Saltcoats.

Meals. A Thursdays and Saturdays. B Wednesdays C Thursdays and Saturdays. D Mondays and Fridays. If any passengers for stations between Winnipeg and Portage la Prairie, train will stop to let off, and when flagged to take on passengers. W. R. BAKER, Gen. Super't. A. M'DONALD, Asst. Gen. Pass'gr Agent.

N. W. C. & N. Co's Railway TIME TABLE.

Table with columns for Read Down, GOING EAST, Stations, and Read Up, GOING WEST. Includes stations like Lethbridge, Woodcock, Purple Springs, Grassy Lake, Cherry Coulee, Winifred, Seven Persons, Dunmore.

E. T. GALT, Manager, Lethbridge. J. BAILEY, Supt. Lethbridge.

THE Northern Pacific And Manitoba Railway.

Can now give passengers the choice of going to Eastern Canada or the United States by either

ALL-RAIL OR LAKE AND RAIL

According to recent changes in time tables, passengers can now make a continuous trip to the East via the all-rail route, making better time than by any other route.

It is the only line by which connection can be made with the magnificent steamers of the Lake Superior Transit Co. and Northwest Transportation Co. once a week, affording passengers a pleasant trip through the lakes.

All Baggage destined for Points in Canada checked through, doing away with Customs troubles.

Ocean Passage and Berths Secure To and from Great Britain and Europe. All first-class Steamship Lines represented.

Round Trip Excursion Ticket

To Pacific Coast, Good for Six Months.

For full information call on or write to any of the company's Agents.

H. J. BELCH, City Ticket Agent, 456 Main Street, Winnipeg. H. SWINFORD, General Agent. General Office Building, Water Street, Winnipeg. J. M. GRAHAM, General Manager.