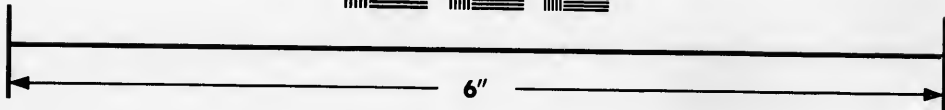
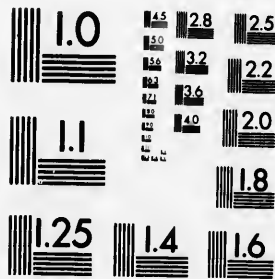


**IMAGE EVALUATION  
TEST TARGET (MT-3)**



**Photographic  
Sciences  
Corporation**

23 WEST MAIN STREET  
WEBSTER, N.Y. 14580  
(716) 872-4503

**CIHM  
Microfiche  
Series  
(Monographs)**

**ICMH  
Collection de  
microfiches  
(monographies)**



Canadian Institute for Historical Microreproductions / Institut canadien de microreproductions historiques

**© 1993**



The copy filmed here has been reproduced thanks to the generosity of:

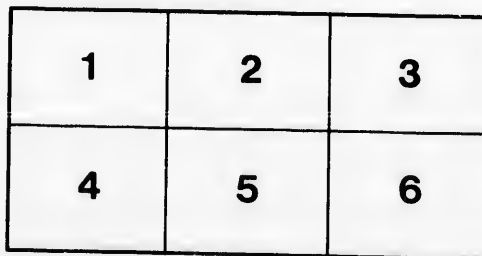
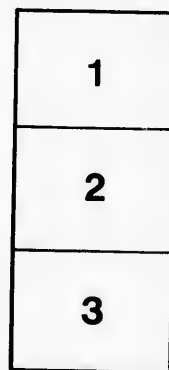
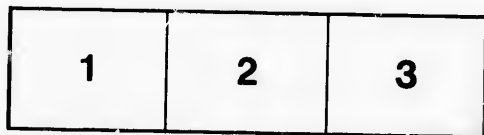
National Library of Canada

The images appearing here are the best quality possible considering the condition and legibility of the original copy and in keeping with the filming contract specifications.

Original copies in printed paper covers are filmed beginning with the front cover and ending on the last page with a printed or illustrated impression, or the back cover when appropriate. All other original copies are filmed beginning on the first page with a printed or illustrated impression, and ending on the last page with a printed or illustrated impression.

The last recorded frame on each microfiche shall contain the symbol → (meaning "CONTINUED"), or the symbol ▼ (meaning "END"), whichever applies.

Maps, plates, charts, etc., may be filmed at different reduction ratios. Those too large to be entirely included in one exposure are filmed beginning in the upper left hand corner, left to right and top to bottom, as many frames as required. The following diagrams illustrate the method:



L'exemplaire filmé fut reproduit grâce à la générosité de:

Bibliothèque nationale du Canada

Les images suivantes ont été reproduites avec le plus grand soin, compte tenu de la condition et de la netteté de l'exemplaire filmé, et en conformité avec les conditions du contrat de filmage.

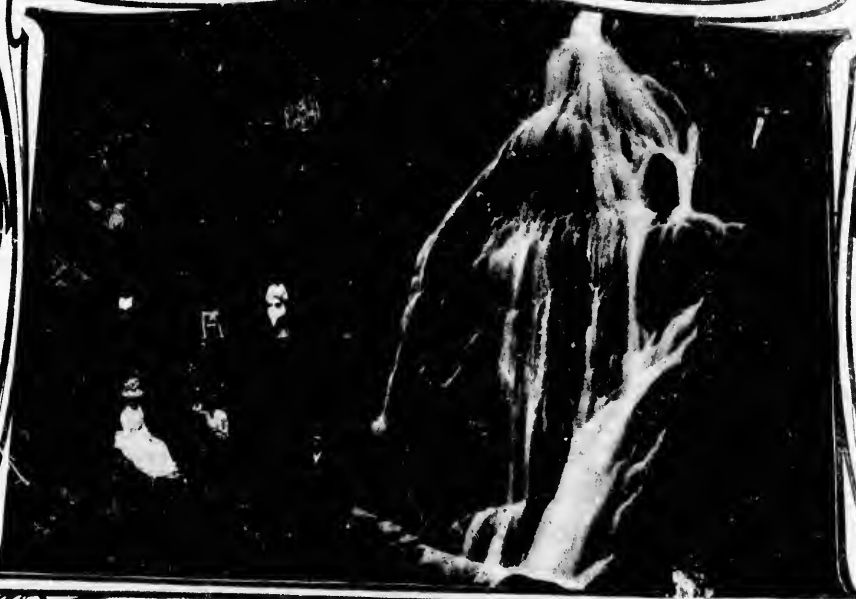
Les exemplaires originaux dont la couverture en papier est imprimée sont filmés en commençant par le premier plat et en terminant soit par la dernière page qui comporte une empreinte d'impression ou d'illustration, soit par le second plat, selon le cas. Tous les autres exemplaires originaux sont filmés en commençant par la première page qui comporte une empreinte d'impression ou d'illustration et en terminant par la dernière page qui comporte une telle empreinte.

Un des symboles suivants apparaîtra sur la dernière image de chaque microfiche, selon le cas: le symbole → signifie "A SUIVRE", le symbole ▼ signifie "FIN".

Les cartes, planches, tableaux, etc., peuvent être filmés à des taux de réduction différents. Lorsque le document est trop grand pour être reproduit en un seul cliché, il est filmé à partir de l'angle supérieur gauche, de gauche à droite, et de haut en bas, en prenant le nombre d'images nécessaire. Les diagrammes suivants illustrent la méthode.

qu'il  
cet  
de vue  
ge  
ation  
és

*Souvenir Of*



*- Hamloops, B. C. -*

# KAMLOOPS, B.C.

The administrative centre for a large and populous district, rich in all the resources which make for the up-building of a prosperous community. It has a climate unsurpassed by any other part of Canada; 1200 feet above sea level.

---

Published by J. H. CLEMENTS, The Druggist and Stationer, Kamloops and Ashcroft, B. C.

FC 2849

73

75

1900

444




# KAMLOOPS, B.C.



**KAMLOOPS**, known throughout British Columbia as the "Inland Capital," is situated on the Thompson River at the junction of two rivers, the North Thompson flowing from its source in the north through a fertile and well wooded valley, and the South Thompson which drains the Great Shuswap system of lakes. Both these rivers navigable for light draft steamers for long distances.

The City lies about 1,200 feet above sea level and owing to its altitude and the fact that it is the centre of the famous "Dry Belt" has a climate unsurpassed by any other part of Canada; dry and bracing and never extreme. The City has never experienced a "boom," but has grown steadily ever since it was incorporated. The population is about 2,500.

Kamloops is the administrative centre for a large and populous district. The offices of the Government Agent, Gold Commissioner, Registrars of the Supreme and County Courts and County Sheriff are in the Law Court building. The Land Registry Office for Yale is also here, and in the Dominion Departmental building are Post Office, Customs and Inland Revenue Offices. The Provincial Home for Pioneers and the Provincial Gaol are also located here. It is a divisional point on the Canadian Pacific Railway. The Canadian Bank of Commerce and the Bank of Hamilton have branches in the City. Two newspapers are published in the City. The City has its own electric light and water-works systems, a new power house having been recently completed at a cost of some \$80,000. There is also a modern and well conducted hospital.



The district surrounding the City is rich in all the resources which make for the up-building of a prosperous community. Mining, as yet in its early stages, promises well for the future. Cattle raising has long been an established business, the bunch-grass ranges affording pasturage for large herds. Fruit growing will in a few years become the largest agricultural industry, the soil and climate being particularly adapted to this branch of husbandry.

The established industries comprise two sawmills with a combined capacity of 75,000 feet per day, a sash and door factory, two furniture factories, two harness and saddlery manufactories, a brewery and mineral water works, two printing establishments, gunmaker and repair shop and a cigar factory.

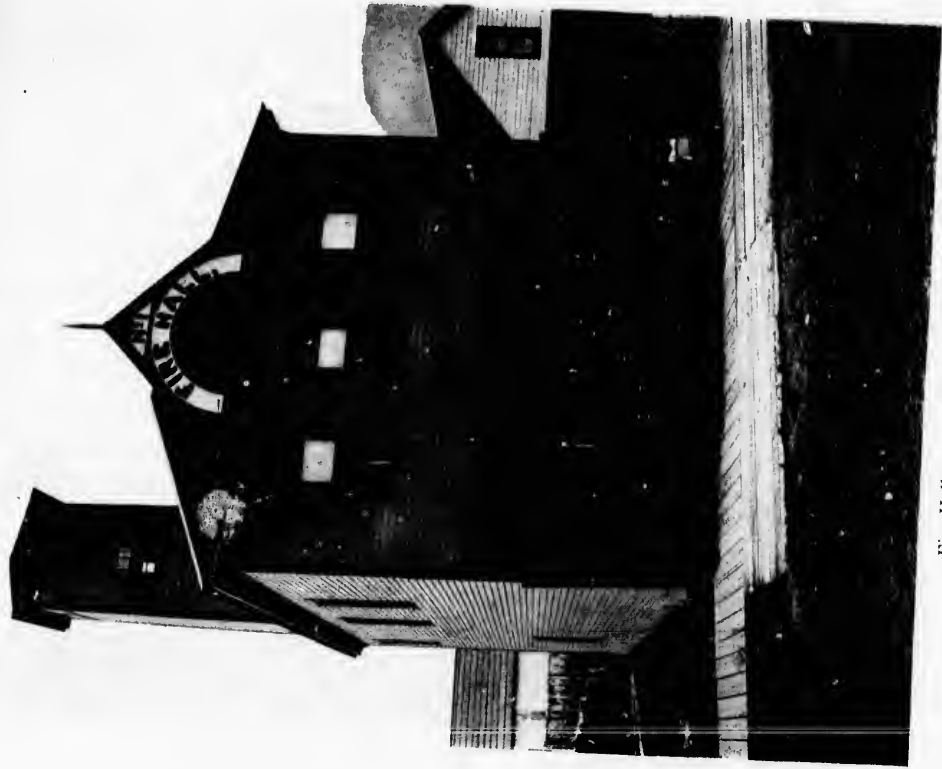
To provide for the social and recreative requirements of the residents there are: a social club, a musical and athletic association owning its own hall and gymnasium, Polo, Football, Lacrosse, Lawn Tennis and Baseball clubs, a rifle association and a gun club. The headquarters of No. 3 Company of the Rocky Mountain Rangers is at the drill hall.

The educational facilities of the city comprise a high school, public school, a private school for boarding and day pupils and a kindergarten school, all in a high state of efficiency.





Kamloops, B.C.



Fire Hall and Volunteer Fire Brigade



Royal Inland Hospital



Scene on the North Thompson River



Riverside Park



Cattle Round-up—Kamloops



Court House



Junction of the North and South Thompson Rivers at Kamloops



Bill Miner  
Provincial gaol.

Lewis Colquhoun  
showing the arrival of R. N. W. Mounted Police with the train robbers, who held up and robbed the C.P.R. Imperial Limited near Kamloops

"Shorty" Dunn



Iron Mask Mine, Kamloops

bbed

11  
12  
13  
14  
15  
16  
17  
18  
19  
20  
21  
22  
23  
24  
25  
26  
27  
28  
29  
30  
31  
32  
33  
34  
35  
36  
37  
38  
39  
40  
41  
42  
43  
44  
45  
46  
47  
48  
49  
50  
51  
52  
53  
54  
55  
56  
57  
58  
59  
60  
61  
62  
63  
64  
65  
66  
67  
68  
69  
70  
71  
72  
73  
74  
75  
76  
77  
78  
79  
80  
81  
82  
83  
84  
85  
86  
87  
88  
89  
90  
91  
92  
93  
94  
95  
96  
97  
98  
99  
100





Panoramic View of Klamloops, B



Panoramic View of Kamloops, B.C.

JACOBSON & PETERSON, AGENTS, ELDON LAKE, MINN.



Post Office

City Offices

Power House



Ward Block

Miles & File  
Smith's Block

Commercial Block



Rocky Mountain Rangers' Drill Hall



Bank of Commerce



Victoria St., looking East



Kamloops Lacrosse Club



Residence of R. M. Gordon  
First house in Kamloops, built in 1862,  
Messrs. Cooney and Fortune, pioneers, standing by.

Seymour St. looking East  
Residences of J. H. Clements  
and Dr. J. S. Burris



St. Paul's English Church  
Church of the Sacred Heart

St. Andrew's Presbyterian Church

Methodist Church and Parsonage  
Baptist Church

East





Bridal Veil Falls—Kamloops



Provincial Home for Old Men



Apple Blossoms—Provincial Home Grounds



Chinese Funeral Ceremonies



Chinese Funeral Ceremonies



Thompson River Bridge at Kamloops



South Thompson Bridge at Kamloops



Kamloops Saw Mill—Fruitlands across the river

