

**CIHM
Microfiche
Series
(Monographs)**

**ICMH
Collection de
microfiches
(monographies)**



Canadian Institute for Historical Microreproductions / Institut canadien de microreproductions historiques

© 1996

Technical and Bibliographic Notes / Notes technique et bibliographiques

The Institute has attempted to obtain the best original copy available for filming. Features of this copy which may be bibliographically unique, which may alter any of the images in the reproduction, or which may significantly change the usual method of filming are checked below.

L'Institut a microfilmé le meilleur exemplaire qu'il lui a été possible de se procurer. Les détails de cet exemplaire qui sont peut-être uniques du point de vue bibliographique, qui peuvent modifier une image reproduite, ou qui peuvent exiger une modifications dans la méthode normale de filmage sont indiqués ci-dessous.

- | | |
|---|--|
| <p><input type="checkbox"/> Coloured covers /
Couverture de couleur</p> <p><input type="checkbox"/> Covers damaged /
Couverture endommagée</p> <p><input type="checkbox"/> Covers restored and/or laminated /
Couverture restaurée et/ou pelliculée</p> <p><input type="checkbox"/> Cover title missing / Le titre de couverture manque</p> <p><input type="checkbox"/> Coloured maps / Cartes géographiques en couleur</p> <p><input type="checkbox"/> Coloured ink (i.e. other than blue or black) /
Encre de couleur (i.e. autre que bleue ou noire)</p> <p><input type="checkbox"/> Coloured plates and/or illustrations /
Planches et/ou illustrations en couleur</p> <p><input type="checkbox"/> Bound with other material /
Relié avec d'autres documents</p> <p><input type="checkbox"/> Only edition available /
Seule édition disponible</p> <p><input type="checkbox"/> Tight binding may cause shadows or distortion
along interior margin / La reliure serrée peut
causer de l'ombre ou de la distorsion le long de
la marge intérieure.</p> <p><input type="checkbox"/> Blank leaves added during restorations may appear
within the text. Whenever possible, these have
been omitted from filming / Il se peut que certaines
pages blanches ajoutées lors d'une restauration
apparaissent dans le texte, mais, lorsque cela était
possible, ces pages n'ont pas été filmées.</p> <p><input type="checkbox"/> Additional comments /
Commentaires supplémentaires:</p> | <p><input type="checkbox"/> Coloured pages / Pages de couleur</p> <p><input type="checkbox"/> Pages damaged / Pages endommagées</p> <p><input type="checkbox"/> Pages restored and/or laminated /
Pages restaurées et/ou pelliculées</p> <p><input checked="" type="checkbox"/> Pages discoloured, stained or foxed /
Pages décolorées, tachetées ou piquées</p> <p><input type="checkbox"/> Pages detached / Pages détachées</p> <p><input checked="" type="checkbox"/> Showthrough / Transparence</p> <p><input type="checkbox"/> Quality of print varies /
Qualité inégale de l'impression</p> <p><input type="checkbox"/> Includes supplementary material /
Comprend du matériel supplémentaire</p> <p><input type="checkbox"/> Pages wholly or partially obscured by errata
slips, tissues, etc., have been refilmed to
ensure the best possible image / Les pages
totalement ou partiellement obscurcies par un
feuillet d'errata, une pelure, etc., ont été filmées
à nouveau de façon à obtenir la meilleure
image possible.</p> <p><input type="checkbox"/> Opposing pages with varying colouration or
discolourations are filmed twice to ensure the
best possible image / Les pages s'opposant
ayant des colorations variables ou des décolorations
sont filmées deux fois afin d'obtenir la
meilleur image possible.</p> |
|---|--|

This item is filmed at the reduction ratio checked below/
Ce document est filmé au taux de réduction indiqué ci-dessous.

	10X		14X		18X		22X		26X		30X	
	12X		16X		20X		24X		28X		32X	

✓

The copy filmed here has been reproduced thanks to the generosity of:

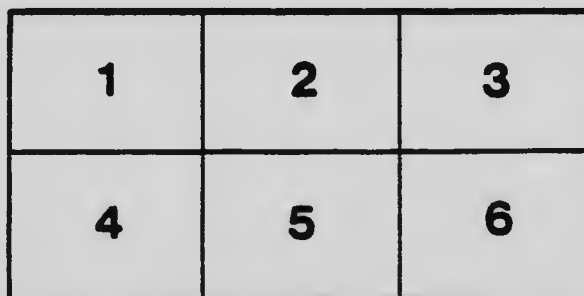
National Library of Canada

The images appearing here are the best quality possible considering the condition and legibility of the original copy and in keeping with the filming contract specifications.

Original copies in printed paper covers are filmed beginning with the front cover and ending on the last page with a printed or illustrated impression, or the back cover when appropriate. All other original copies are filmed beginning on the first page with a printed or illustrated impression, and ending on the last page with a printed or illustrated impression.

The last recorded frame on each microfiche shall contain the symbol \rightarrow (meaning "CONTINUED"), or the symbol ∇ (meaning "END"), whichever applies.

Maps, plates, charts, etc., may be filmed at different reduction ratios. Those too large to be entirely included in one exposure are filmed beginning in the upper left hand corner, left to right and top to bottom, as many frames as required. The following diagrams illustrate the method:



L'exemplaire filmé fut reproduit grâce à la générosité de:

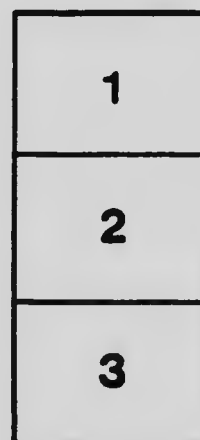
Bibliothèque nationale du Canada

Les images suivantes ont été reproduites avec le plus grand soin, compte tenu de la condition et de la netteté de l'exemplaire filmé, et en conformité avec les conditions du contrat de filmage.

Les exemplaires originaux dont la couverture en papier est imprimée sont filmés en commençant par le premier plat et en terminant soit par la dernière page qui comporte une empreinte d'impression ou d'illustration, soit par le second plat, selon le cas. Tous les autres exemplaires originaux sont filmés en commençant par la première page qui comporte une empreinte d'impression ou d'illustration et en terminant par la dernière page qui comporte une telle empreinte.

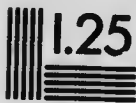
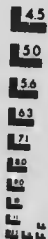
Un des symboles suivants apparaîtra sur la dernière image de chaque microfiche, selon le cas: le symbole \rightarrow signifie "A SUIVRE", le symbole ∇ signifie "FIN".

Les cartes, planches, tableaux, etc., peuvent être filmés à des taux de réduction différents. Lorsque le document est trop grand pour être reproduit en un seul cliché, il est filmé à partir de l'angle supérieur gauche, de gauche à droite, et de haut en bas, en prenant le nombre d'images nécessaire. Les diagrammes suivants illustrent la méthode.



MICROCOPY RESOLUTION TEST CHART

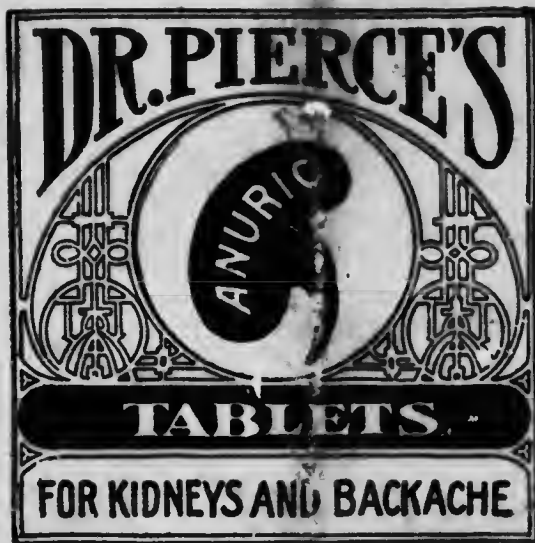
(ANSI and ISO TEST CHART No. 2)



APPLIED IMAGE Inc

53 East Main Street
Rochester, New York 14609 USA
(716) 482 - 0300 - Phone
(716) 288 - 5989 - Fax

B25



FAC-SIMILE OF PACKAGE

DOCTOR PIERCE'S

Anuric Tablets

FOR

RHEUMATISM, KIDNEYS

AND

BACKACHE

AVERAGE DOSE: ONE AFTER MEALS

SEE DIRECTIONS INSIDE

MANUFACTURED ONLY BY

World's Dispensary Medical Association
FORT ERIE NORTH, ONT.

14157

RM671
 A1
 P38
 no. 12
 Res.

RHEUMATISM.

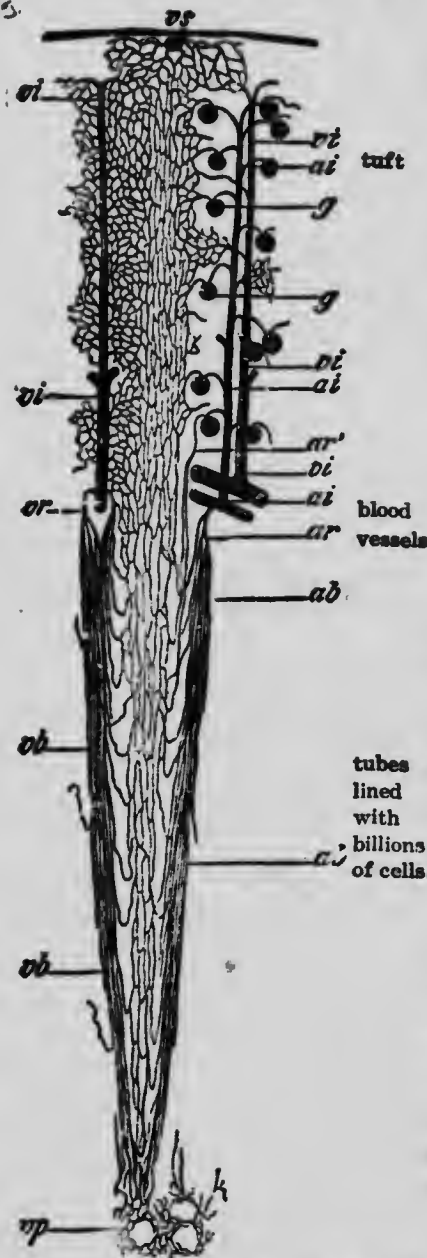


Diagram showing the blood-vessels as they start in the small round dot like tufts from which also the kidney tubules arise that secrete the urine. The urine is watery in the tufts but as it passes down the tubes of a healthy person's kidney it grows thicker as the cells keep adding poisons taken from the blood.

This troublesome malady is the result of many poisons that come from catarrhal colds, the various fevers, consumption, affection of the bowels, and any condition of the system in which certain poisons that should be carried off by the kidneys and bowels are not removed.

MUSCULAR RHEUMATISM

is where there is soreness of the muscles from these poisons which should be eliminated, but are retained.

NEURITIS AND NEURALGIA.

Neuritis and neuralgia, sciatica and lumbago, are inflammations of the sheaths of nerves, due to the irritant substances that should be eliminated, or that are in the circulation in excessive quantities. Under certain conditions the nerves become very sensitive to these substances, and the pain is really an intimation or danger signal that the nerves are being poisoned by these materials.

Rheumatism of the joints, or arthritis, is a form of rheumatic affections in which the synovial membranes are first irritated by these poisons. Sometimes this inflammatory condition extends to the substance of the joints, producing swellings and excruciating pain.

TREATMENT.

In these conditions the use of "Anuric Tablets" is of great benefit. One has only to look up the writings of eminent medical authorities in reference to the principal ingredients of the "Anuric Tablets" to get some idea

of the extent to which these remedies are used by the medical profession, and as to how satisfactorily they act in removing the diseased conditions that produce these painful maladies. Inasmuch as the bowels must be depended upon to remove a part of the poisonous materials, they should be kept loose by the use of one or two of Dr. Pierce's Pellets with each meal. Following the meal two of the "Anuric Tablets" should be taken with a glass of water. The bowels must be kept loose with this treatment for several days, and it usually requires at least a week to get rid of the poisonous matter that is contained in the system, and which produces the discomfort and pain. In severe cases of pain we prescribe "Anuric Tablets" in doses of two or three every two or three hours. They should be taken with plenty of water and with such fruit as apples.

Diet has much to do with rheumatic conditions, and we usually advise patients who suffer from these maladies to live mainly on foods that do not contain substances likely to produce highly acid and acrid poisons in the blood.

The highest medical authorities have revolutionized the erroneous opinions of the past. After a careful study of these diseases it has been found that hearty, frequent and well-chosen meals, with much bustling about in the open air, are absolute essentials to a cure.

Though a patient may eat large meals, if the stomach does not assimilate what is given it, such a patient is quite as poorly nourished as one who gets but a crust a day.

DIET.

Use chicken, lamb, game, sweetbreads, brains, and the more delicate fish, simply cooked and served without rich sauces. Oysters and clams may be taken. Fried dishes of all kinds should be avoided.

Avoid lobster and crabs, venison, mutton, goose, pork in all forms, and, also, heavy dark flesh of all kinds.

Of vegetables avoid tomatoes, cucumbers, and all salads that have a vinegar dressing; the weak stomach is busy manufacturing more powerful acids than the system can endure. *Eat lightly* of potatoes, except baked, dried beans or peas, and raw onions.

Indulge freely in raw apples, green beans and peas, carrots, turnips and well-cooked greens. For all the starch the body needs, rice is worth all the bread, beans and potatoes put together.

Avoid—Strawberries and raw pears, are not to be taken by the rheumatic, however wholesome they may be for others, and strange enough, where grape and orange juice will set a man's joints to throbbing, he can help himself safely and freely to lemon and lime juice.

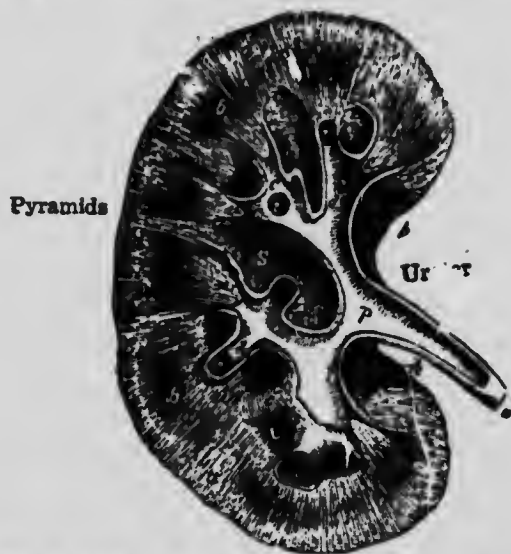
There is a healing quality in both lemons and limes and their juice should be used instead of vinegar.

Avoid—In regard to sugar, it should be avoided in all forms. Candies should be strictly avoided.

4

DOCTOR PIERCE'S
ANURIC TABLETS
FOR
Kidneys and Backache

Two kidneys, each as large a mass as your fist, perform the duties of removing poisons from the blood from birth to old age. Death results in a few hours if the kidney cells do not remove the waste materials and fail to perform their function.



One-half of the Kidney laid open to show the pyramids of excreting tubes as they enter the ureter.

**HOW TO USE DOCTOR PIERCE'S ANURIC TABLETS FOR
FUNCTIONAL DISORDERS OF THE KIDNEYS, BACK-
ACHE IN REGION OF KIDNEYS, PAIN IN
BACK OF NECK:**

Begin using one "Anuric Tablet" after each meal with a large glass of water. Another glass of water, with or without an "Anuric

Tablet," may be used with benefit an hour or so later. Increase the dose of the "Tablets" each day, until three or four are taken after each meal and at night, or until relieved.

In severe cases, hot applications, as a pack with Dr. Pierce's Ammonio-Camphorated Liniment, or a hot water bag, or bag of hot table-salt may be employed. Usually the bowels should be freely acted upon by taking from three to six of Dr. Pierce's Pleasant Pellets daily. If the pain causes wakefulness, one-half or one tablespoonful of Dr. Pierce's Compound Extract of Smartweed should be taken on retiring, with a cup of hot water and two "Anuric Tablets."

The articles of diet should be on this order: You may eat sparingly of the following:

Soups.—Clear, ox tail or turtle, chicken broths, meat essences.

Eggs.—Lightly boiled, poached, fried, or scrambled in butter.

Meats.—Moderate once each day. Beef, steak or roast, medium or well done; chicken, lamb, sweetbreads, calf's foot jellies, extracts of meat.

Fish.—Sparingly. Oysters, clams, raw or roast.

Farinaceous.—Brown bread, toast, biscuit (not fresh), rice, oatmeal, tapioca, sago, arrowroot, barley.

Vegetables.—Especially green. Spinach, asparagus, dandelion, beet tops; peas, fresh and young; beans, fresh and young; radishes, parsnips, carrots.

Fruits.—Oranges, bananas; pears or prunes cooked; stewed apples.

Beverages.—Hot water, weak tea, koumiss, lemonade, aerated waters. Milk, fresh with equal part of boiled water. To each pint add 40 grains sodium bicarbonate and a little salt. Drink freely.

Mineral Waters.—Vichy, Deeprock, Apollinaris, Lithia water, Carlsbad, Bethesda, Saratoga.

Must Avoid.—Rich soups, hard boiled eggs, fried foods, pickles, spices, veal, duck, goose, salmon, lobster, crabs, rhubarb, strawberries, omelets, sweet fermented drinks, beer; pies, preserves, fruits, bread.

1. Wear flannel or wool next to the skin. Avoid taking cold. Warm baths, and tepid baths are especially beneficial.

2. Dine in the middle of the day, and avoid heavy suppers.

COLDS, BRONCHITIS

For Cold in the head (coryza), catarrhal cold, grip, bronchitis, non-diphtheritic sore throat, threatened quinsy—all these acute conditions have been found to be due to the presence of poisons in the system, due to germs and various other causes. Generally they produce a paralysis of the digestive functions, and there is more or less accumulation of irritating matter in the bowels.

For the treatment of this condition there is no more active plan than to use a physic that will act promptly, for which we recommend from three to six of Dr. Pierce's Pleasant Pellets. These should be taken immediately upon the first symptoms of the trouble being manifest. Afterwards with them should be taken one of Dr. Pierce's Anuric Tablets. Every two hours the "Anuric Tablets" should be repeated in doses of one or two, with a glass of water, either hot or cold, as may be most agreeable. Hot lemonades are particularly helpful, as the acid of the lemon tends to counteract some of the poisons, and renders more efficient and rapid the beneficial effects of the "Anuric Tablets." They contain certain ingredients that are in use by the profession as the most effective general antiseptics. These agents penetrate thru the blood all the tissues of the body, and their remedial influence is felt in every organ.

We earnestly request that this remedy and treatment be given a trial, feeling satisfied that it will be found most agreeable. During the treatment of a cold the diet should be very light—foods that are easily digested and that agree with the delicate stomach. Draughts should be avoided, and exposure and over-doing should be carefully shunned, also exposure to the air of rooms that are over-crowded. Moderately dry air is best. Hot foot-baths on retiring are beneficial.

This treatment should be kept up several days, so as to not only get rid of all the poisons that are circulating in the system, but also to build up, strengthen and restore the general health and vigor.

INFECTIOUS DISEASES

In all infectious diseases the kidneys are required not only to eliminate the ordinary waste products of the body which usually escape in this way, but, in addition, the increased waste produced by the fever, and the poison produced directly and indirectly by the

growth of the invading micro-organism. It is essential, therefore, that the patient shall pass urine in sufficient amount to carry off these substances.

Special advice may be had by writing to Dr. Pierce's Invalids' Hotel, Buffalo, N. Y.

WHY WE HAVE PLACED ANURIC WITH THE DRUGGISTS FOR PUBLIC SALE

For many years our physicians have been using Dr. Pierce's Anuric Tablets for the relief of over-worked and weakened kidneys. The relief obtained by sufferers from their troubles has been so satisfactory that we determined to place them with the druggists, where they could be used by the public generally.

The ingredients are mostly vegetable remedies that act upon the bowels and the secreting cells of the kidneys, and thus expel from the system poisons that circulate through the blood, injure and more or less upset all the functions of the various organs of the body. The "Tablets" are not harmful, nor poisonous, but act kindly by expelling

those poisons from the body that should be thrown off naturally. **They aid Nature.**

Highly magnified urinary deposits, which indicate impairment of the digestive functions, are represented. The crystals are composed of oxalate of lime and appear in the different forms shown in the five sections, of octahedral, decahedral, round and dumb-bell shapes. The latter are formed in the kidneys, and are sometimes discovered adhering to casts.



Kidney Disease is the most frequent cause of rejection of seekers for **life insurance**. The first test of an examiner is to determine if the kidneys are healthy, because life is short when these organs are diseased.

Anuric is not intended for the treatment of Bright's Disease or serious kidney disease.

If satisfactory benefit is not obtained from the use of the "Anuric Tablets" after a reasonable length of time, the case should be submitted by letter to the Faculty of the Invalids' Hotel for free diagnosis.

Please send request for our special questions for kidney diseases. No charge is made for consultation by letter, and all correspondence is strictly confidential.

Urine tested.—The Doctor Pierce Clinic of Urology will make a simple test of the urine free of charge, sufficient to determine whether or not the sender is suffering from any serious kidney or bladder ailment; or a more thoro and complete analysis of the urine will be made for the sum of two dollars. The latter will include a most careful and scientific chemical and microscopical examination, also a bacteriological stain of the sediment, if indicated, and a complete type-written report of the analysis, with a letter of explanation, will be sent you by return mail. The slip enclosed in this package gives explicit directions for sending urine by mail; or we will furnish a mailing case, approved by the United States Post Office Department, with bottle and preservative, and send same by mail for TWO DIMES. The bottle, when received, can be filled according to directions, slipped into the case, the cover screwed on, wrapped in paper or a label pasted on, directed to Doctor Pierce's Invalids Hotel, No. 665 Main Street, Buffalo, New York, and mailed for one cent for each ounce or fraction thereof.

TREATMENT OF KIDNEY DISEASES AT THE INVALIDS' HOTEL.

In the treatment of kidney diseases the specialists at the Invalids'



Urine
tubes
of Kidney
lined with
cells that
excrete
the urine



Cells of the Kidney in their
natural layers

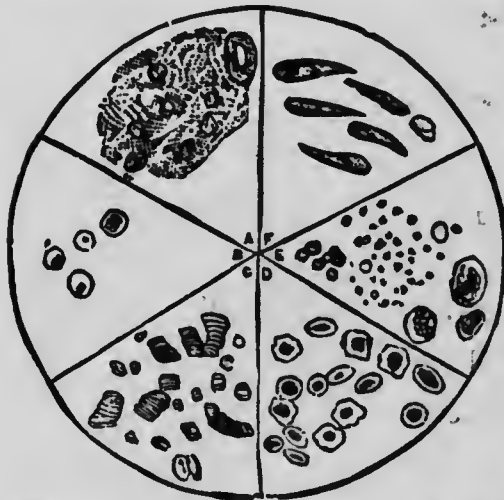
Hotel have been unusually successful both in the case of those at a distance to whom they have sent (by mail or express) medicines

especially prepared for each individual case, and those who have been inmates of the Invalids' Hotel under our immediate supervision. Our unusually well-equipped laboratory, where successive analyses demonstrate practically every significant change in the urine as soon as it occurs, and the great experience of our physicians, gained by caring for hundreds of cases annually, enable them to prescribe medicines especially adapted to the requirements of each case.

MENSTRUATION, SCANTY, PAINFUL AND PROFUSE

These conditions are usually overcome by the use of Doctor Pierce's Anuric Tablets and Doctor Pierce's Favorite Prescription. The "Anuric Tablets" should be taken immediately after meals in doses of one or two; the "Favorite Prescription" in the middle of the

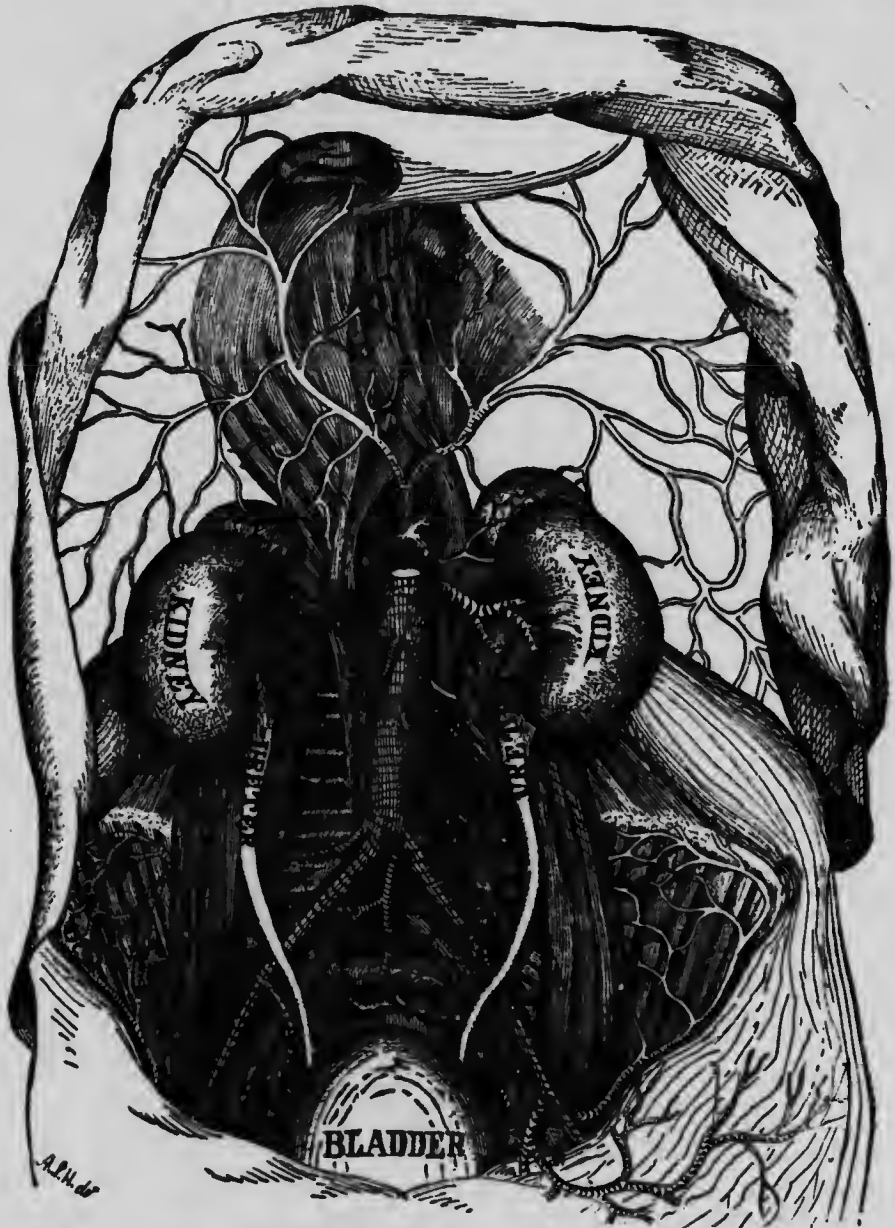
forenoon, afternoon and on going to bed—a teaspoonful or two. They should be kept up steadily throughout the menstrual periods. In the interval between menstruations the "Anuric Tablets" should alone be used, taking one after meals three times a day, in order to bring about a condition of the genito-urinary organs that is free from irritation.



In division A is represented pus and mucus, with decomposition indicating suppuration somewhere along the urinary tract. In B pus globules are alone represented. In the division marked C are shown blood corpuscles as they are arranged in blood drawn from a vein or an artery. D represents the same separated, as they always are when present in the urine. In E highly magnified oil globules are represented. If present in the urine, they indicate disease of the kidneys. In F are represented epithelial cells, the presence of which, in large numbers, is indicative of diseases of the mucous lining of the urinary organs.

THE KIDNEYS AND URINARY DISEASES:

A short study of Figure 1, which shows the relative positions of the kidneys, ureters, bladder and some of the adjacent struc-

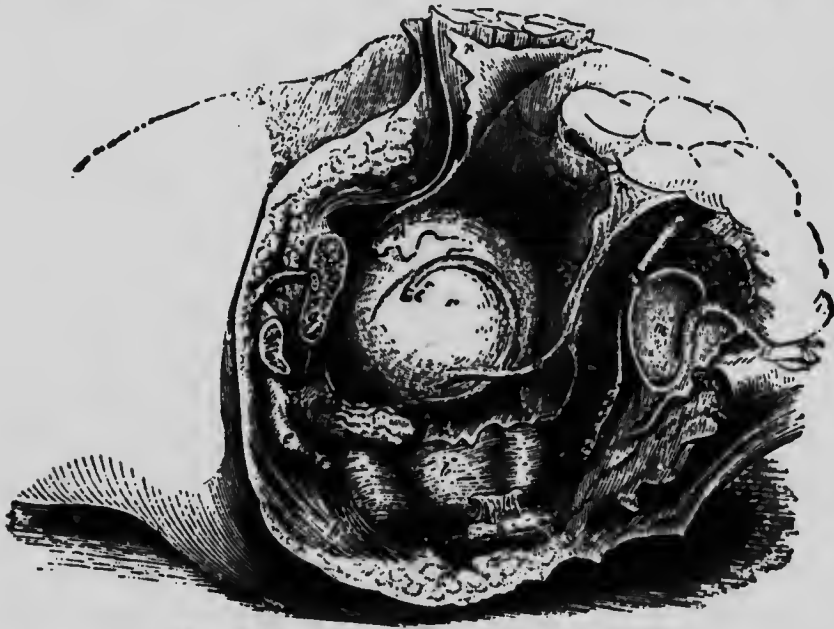


tures, will assist one materially to understand the brief anatomical description of the urinary organs which follows.

The kidneys, the ureters, the bladder and the urethra, are, taken as a whole, termed the Urinary System. Its function is

purely that of removing from the body certain waste materials which, if allowed to remain, would cause serious illness and eventually death. The prostate gland, while primarily a sexual organ, may, under certain conditions—for example, when enlarged—be considered as belonging to the urinary group.

The kidneys (there are two of them), are located in the back part of the abdominal cavity, one on either side of the spinal column (the back bone), their lower halves extending below the edge of the ribs in the back. Their supply of blood is very abundant, and from it is constantly being abstracted when a person is in good health, water, organic and inorganic salts, and other



LATERAL VIEW OF THE VISCERA OF THE MALE PELVIS.

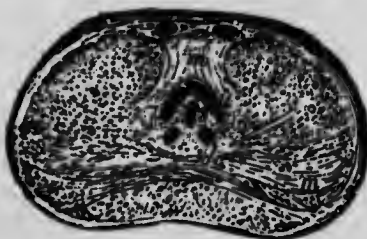
The left hip-bone has been disarticulated from the sacrum, the spinous process of the ischium cut through, and the pubis divided to the left of the symphysis; *a*, bladder; *b, b'*, rectum; *c*, membranous part of the urethra; *d*, section of the left corpus cavernosum; *e*, bulb of the spongy body of the urethra; *f*, Cowper's gland; *g*, section of the body of the pubis; *h*, sphincter ani muscle; *i*, part of the left vas deferens; *m*, articular surface of the sacrum; *n*, divided spine of the ischium; *o*, coccyx; *p*, prostate gland; *r, r*, peritoneum; *r'*, recto-visual pouch; *u*, left ureter; *v*, left vesicula seminalis.

effete substances of which the urine is composed. As fast as the urine is gathered, it is carried off by the ureters. These are two pipe-like ducts from fourteen to sixteen inches long, of the diameter of a goose quill except at the beginnings which are larger, and funnel shaped. They extend downward and enter the base of the bladder; into this organ they carry the urine.

The bladder is a sac, or reservoir, into which the ureters

normally discharge a few drops of urine at very short intervals, and in which the fluid is stored until a convenient opportunity for its expulsion. It has a comparatively great expansive and contractile range. It is situated in the lower part of the abdomen just back of the pubic bones. When it is empty it rests as a flattened, collapsed bag with its inner surfaces together; when distended it assumes a somewhat globular shape. In an adult it holds comfortably from one-half to one pint, and there should be no specially urgent call to urinate before the lesser amount has accumulated. The limit of its capacity, however, is very much greater, depending on the age, health and habits of the individual.

The urethra is a channel through which the urine flows when it leaves the bladder. In women the urethra is about one and



Section across the middle of the Prostate Gland.

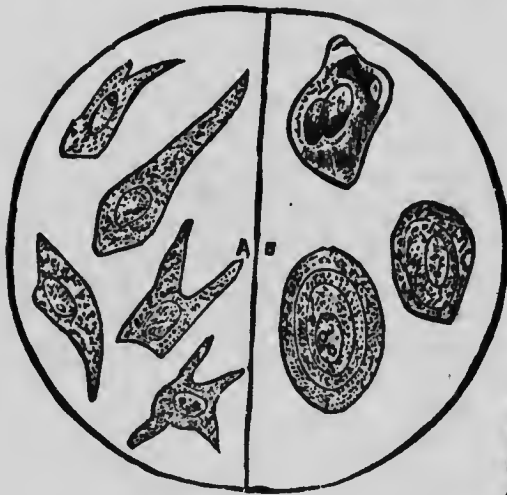
one-half inches in length, and runs along and in the anterior wall of the vagina. In man its length averages six and one-half inches, extending outward through the penis to its external end. The inner one and one-quarter inches of its extent passes through a deep furrow in the upper portion of the prostate gland, and is termed the prostatic urethra; the next three-quarters of an inch is called the membranous part; and the third, the balance extending to the external opening, or meatus, through the penis proper, is known as the spongy urethra. When not distended by a stream of passing urine or an instrument, the walls of the urethra like those of the bladder lie one against the other, making a closed tube. Its surface is composed of mucous membrane. Its muscular coat varies a trifle in thickness in its different parts as does the diameter of its bore. The canal in the prostatic portion is kept firmly closed by a group of muscles known as the urethral sphincter which prevents the involuntary escape of the urine. In this part also are the orifices of the ejaculatory ducts,—pathways through which the semen is forced into the urethra.

The prostate gland when it has attained its normal growth is as large as a good sized horse-chestnut. In childhood it is very small and undeveloped; but at puberty it begins to increase,

reaching its full size at from the 20th to the 25th year of life. It is so situated that it encircles the neck of the bladder and a portion of the urethra.

The Urine. In health the urine freshly voided is a clear, transparent, limpid, sparkling, light amber-colored fluid of an acid (sour) reaction, with an aromatic odor which is not unpleasant. The quantity excreted in each twenty-four hours, under normal conditions, averages fifty ounces, that is, a trifle over three pints.

The voiding of the urine should never be painful; neither should it occur involuntarily, nor at frequent intervals. The flow should start easily and promptly, and in a full, well-rounded, solid stream, and not without force, very slowly or in a hesitating manner, or with twisting, jerking or spattering. Neither should a few drops more or less ooze or dribble out of the penis and wet the clothing a little while after the act of urination is apparently finished. As the urine is secreted with less rapidity during the night than in any other part of the twenty-four hours, the person who has emptied the bladder just before retiring should not be obliged to repeat the performance before getting up at the usual morning hour.



In division A, are represented the caudated cells from the deep structure of the bladder. The cells represented in division B, are amyloid concretions, found where there is an enlarged prostate gland.

Kidney Disease is the most frequent cause of rejection of seekers for **life insurance**. The first test of an examiner is to determine if the kidneys are healthy because life is short when these organs are diseased.

CATARRH OF THE BLADDER.

Cystitis is primarily an inflammation of the mucous lining of that organ, but in advanced cases the muscular structure beneath it is often seriously involved.

Causes. A severe cold, exposure to wet and dampness, taking very irritating diuretic medicines, using strong injections, intemperance, injury to the bladder, the introduction of foreign bodies within it, retention of the urine, and excesses, or it may have

developed in the course of other diseases, such as diphtheria, scarlet fever, typhoid, rheumatism, gout, Bright's disease and its complications, and diabetes; or may owe its origin to gonorrhœa, gleet, stricture of the urethra, gravel, stone, or enlarged prostate gland; and, in women, may be caused by pregnancy, a displaced uterus or leucorrhœa. It is exceedingly apt to become acute on the slightest provocation, when the pain and discomfort it causes cannot be adequately described.

SYMPTOMS. There is frequent desire to pass water, ordinarily but a few drops of urine accumulates in the bladder before it must be voided. It scalds and smarts, and rarely stills the urging that more shall flow. This may be so unremitting that the sufferer has no rest during the day and can sleep only in short intervals at night. There is a sense of weight and pressure in the lower part of the abdomen. The small of the back aches and there is soreness in the region of the kidneys.

TREATMENT. Virtually all diseases of the urinary organs, begin as an inflammation of some part of the mucous tissue which, it will be recollected, lines the interior of all of them. In the greater number of cases certain medicines having a beneficial influence over disturbances in these structures, taken as soon as the early symptoms are apparent, save the person afflicted from what would otherwise be a serious illness.

Doctor Pierce's Anuric Tablets exercise a wonderfully soothing and restorative effect on all unhealthy mucous surfaces, and contain absolutely no narcotics, or other dangerous ingredients. We are constantly receiving reports of quick relief of urinary troubles from individuals who have depended upon them alone. We are also told almost daily by various others who have made use of our special medication, or who were obliged to be under our immediate care at the Invalids' Hotel, they kept the malady in check, relieved their severe symptoms and made life endurable.

KEPT AT DRUG STORES.

As "Anuric Tablets" can be purchased at any drug store in the United States or Canada, or are sent by mail anywhere, every one who is afflicted with urinary disease has at command a reliable remedy. No one will go astray by using them at least until consulting us, or until the necessity for other treatment is unmistakable.

The diet should be bland and unirritating like that advised for colds.

Hot foot-baths and injections of warm water into the bowels are helpful. The quantity of water used must be considerable in order to secure the best effect. The water should be tested by

the fingers until it is as hot as the patient can bear and then, sitting upon the closet-seat with that muscle relaxed, as much should be injected into the rectum as possible, by means of a fountain or bulb syringe, retained for a few minutes, and then permitted to pass away. This should be repeated several times, using water of higher temperature each time; that is, warmer and warmer, until two quarts or more have been used. In severe cases as much as one gallon should be employed in this way. The result will be a relief of the congestion. It is usually necessary to repeat this process twice a day, and sometimes as often as every four hours. In severe cases it may be alternated with the bath.

THE SITZ BATH

is also beneficial used as follows: The bath-tub should be filled about one-half full of water as hot as can be comfortably borne. The lower part of the body, from the hips down, should then be allowed to rest in the bath, permitting the water to cover the limbs, and come well up around the hips. As soon as the heat of the water is comfortable, a little more hot water should be added, and about fifteen or twenty minutes spent in the water, at this temperature. The consequence will be a redness of the surface and a flux of blood to the skin, with corresponding relief of the congestion of the urinary tract. Care should be used after this bath not to go out into the cold air, and the body should be warmly dressed; and while not generally necessary to go to bed, yet, when sitting, the lower part of the body should be surrounded by a rug, blanket, or shawl, and all drafts of air avoided for about two hours. This bath can be repeated every few hours without injury.

Special advice may be had by writing to Dr. Pierce's Invalids' Hotel, Buffalo, N. Y.

Kidney disease is suspected by medical men when patients complain of backache or suffer with irregular urination, disturbed, too frequent, scanty or painful passage. The general symptoms are rheumatic pains or neuralgia, headaches, dizzy spells, irritability, despondency, weakness and general misery. Worry is a frequent cause and sometimes a symptom of kidney disease. Thousands have testified to immediate relief from these symptoms after using Dr. Pierce's Anuric Tablets.

Any one using Doctor Pierce's Anuric Tablets or other remedies will be given free, confidential medical advice. You are therefore invited to avail yourself of this privilege, at any time.

STONE IN THE BLADDER.

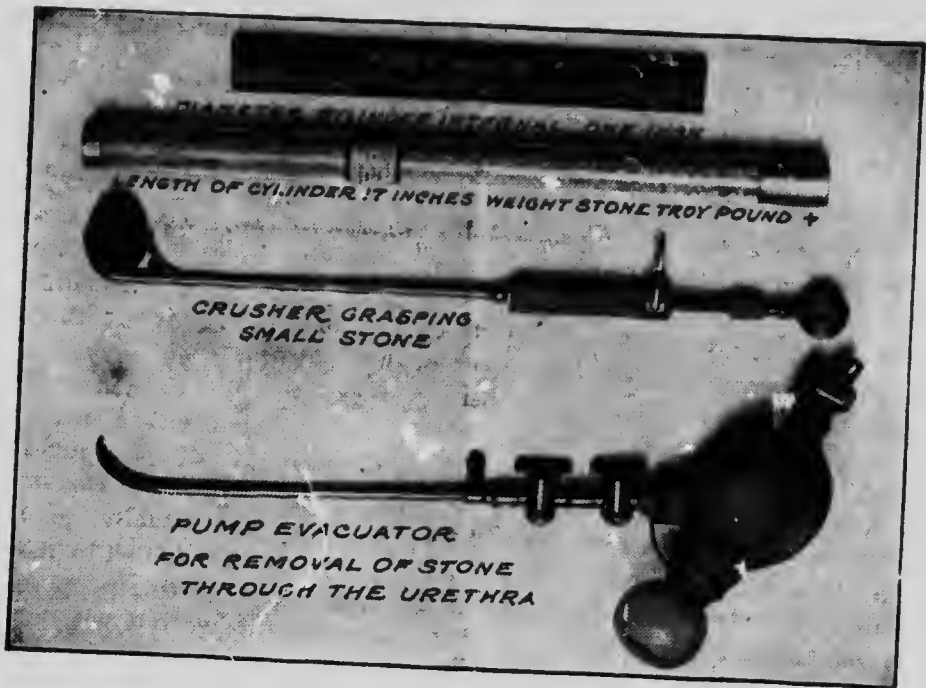
The difference between stone in the bladder and gravel is purely arbitrary, and is one of degree only. As long as the little solid stone-like bodies remain so small that they pass through the urethra with the stream of urine, they are known as gravel. But when they attain dimensions which prevent their escape from the bladder in this manner, they rise to the dignity of being called stones, or vesical calculi. They were, in reality, such from the start; but custom has sanctioned this nomenclature—based on size.

A stone once having formed tends to increase in bulk constantly. The mere fact that there is a solid body in the bladder causes a crystallization upon it, even if there is not an excess of the various salts which would otherwise have remained in solution.

The Symptoms. The two symptoms which are almost diagnostic of stone in the bladder are constant but irregular pain in the bladder and cystitis. The former varies in its intensity from mere discomfort to an agony which is second to none that a human being can endure. Its acuteness depends upon the character of the stone, the condition of the bladder and its sensitiveness. In those cases in which the stone is smooth there is but little suffering; but in those in which it is rough the pain is intense. It is increased when the victim moves about and particularly if he is subject to jolting, such as is inevitable when he rides horseback, or in a springless vehicle, runs, etc.

At any time during the act of urination the stream may be shut off suddenly with the occurrence of a sudden pain in the rectum, and along the urethra. The same suffering may develop when all the urine has been passed. The agony may be lessened if one lies down upon his back, or it may continue until a further supply of urine has accumulated.

A stone in the bladder, being a foreign body, that is, one which is not there naturally, irritates the mucous surfaces with which it is in intimate contact and causes them to become congested and inflamed. The rougher it is, the earlier these abnormal conditions develop. Having once been established, infection of the urine, which may occur in many ways, takes place almost inevitably, and then the pangs and grave dangers of a suppurative cystitis are added to those which preceded it. So promptly and so universally does this happen, that many persons who have stone are not aware of the fact, but attribute their sufferings to a cystitis which masks the real cause of their illness. Indeed most individuals who nominally die of stone in the bladder do so because of the cystitis accompanying it, and not from the mere presence of its exciting cause.



TREATMENT: REMOVAL BY CRUSHING IS THE PLAN OF SAFETY AND COMFORT

Convinced that the removal of stone by crushing was the proper way, but not satisfied, however, with anything short of perfection, our physicians at the Invalids' Hotel and Surgical Institute have devoted years of study to this disease, and have perfected methods of treatment and have become so skilful that they have relieved hundreds of patients of stone in the bladder without a fatality, and by a single operation in each case.

A moment's reflection will convince those afflicted with stone in the bladder of the great advantages of our method over the cutting operation, which is admittedly dangerous, requires the infliction of a deep wound, entails the loss of much blood, and generally produces severe shock; and also of its superiority over that variety of the crushing process which necessitates submitting to several successive treatments. Our patients seldom lose any blood, a few

drops at the most, are confined to the bed but a few days, and never have even an abrasion of the skin to show that anything unusual has been done.

FOR RELIEF.

For temporary relief we advise the same plan of treatment that is outlined for the correction of cystitis.

Palliative treatment of gravel really consists in the treatment of the inflammation of the mucous membrane of the urinary canal, and for this purpose there can be no better agent than Doctor Pierce's Anuric Tablets, taken in doses as may be required to render the urine free in quantity and to cause it to soothe the inflamed mucous surface. To render the urine bland the addition of a quarter of a teaspoonful of phosphate of soda to a glass of water, and with it take two of Doctor Pierce's Anuric Tablets every three hours will usually give relief to the average case. Where gravel or stones are settled in the bladder, it is necessary that they be removed, and for this purpose we recommend our method by which they are washed out without irritating or cutting.

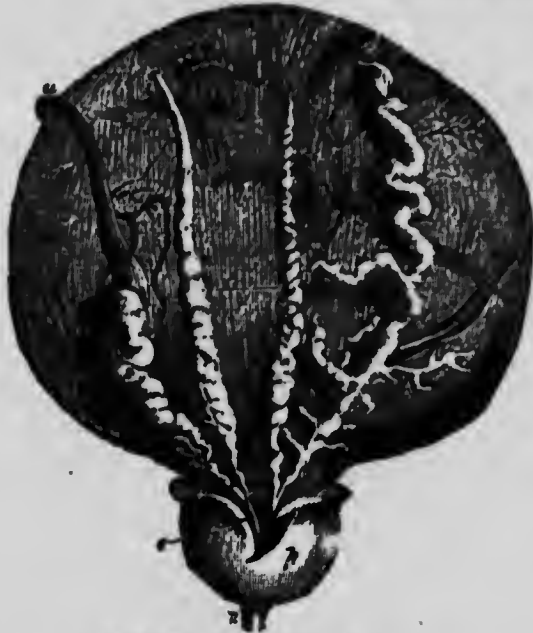
We have special instruments, devised for this purpose, of a delicate character, which are introduced into the bladder and used to remove all the gravel without leaving any to reform or irritate, and this is done without pain or discomfort.

Local anæsthetic only is required. Ether or chloroform need not be used, and cutting or other severe measures are unnecessary.

WORRY, DESPONDENCY.

Kidney Disease is suspected by medical men when patients complain of backache or suffer with irregular urination, disturbed, too frequent, scanty or painful passage. The general symptoms are rheumatic pains or neuralgia, headaches, dizzy spells, irritability, despondency, weakness and general misery. Worry is a frequent cause, and sometimes a symptom, of kidney disease.

ENLARGEMENT OF THE PROSTATE GLAND.



MALE BLADDER FROM BEHIND.

S, seminal vesicles; *u*, ureter or tube from the kidney; *p*, prostate.

The prostate surrounds the neck of the bladder, and is penetrated by many small tubes that empty into the urethra. Men who note a little stain on their linen (which represents the retention of a few drops of urine in the deep urethra, following urination), are always subject sooner or later to this disease. This urine may be irritating from diseased kidneys or bladder, and it may simply become foul from remaining in the deep urethra and undergoing putrefaction. This will gradually lead to enlargement of the prostate.

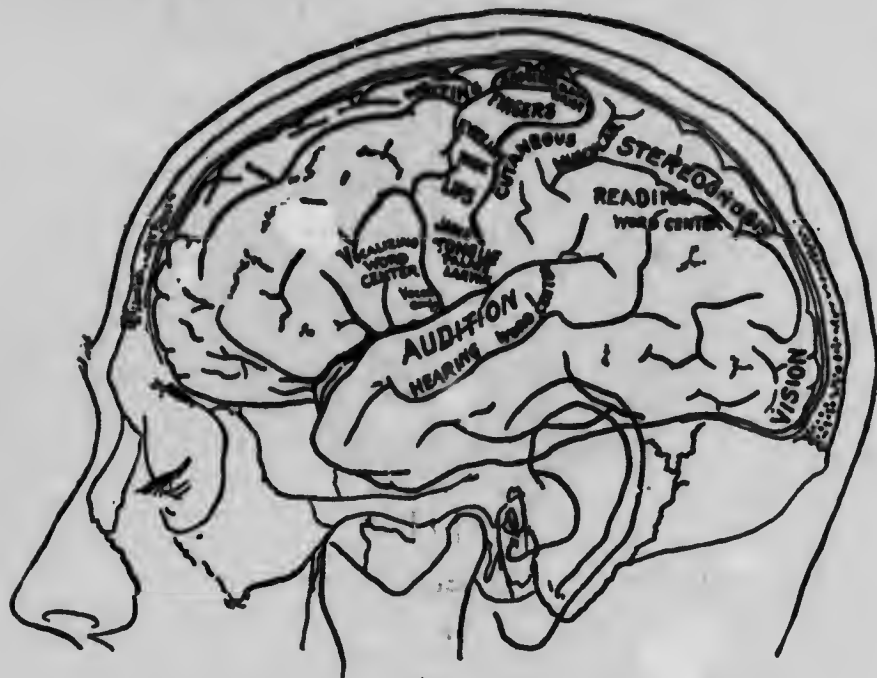
When chronic and decided enlargement has resulted, we advise a treatment which we have used with so much satisfaction and certainty, called the Bottini method, by which the central portion of the prostate—that part that presses upon the mouth of the bladder and prevents the free flow of urine—is destroyed by electricity. This is done without harm or discomfort, and in ten days or two weeks the trouble to pass the water is overcome, and the urine is voided freely even in those who have used the catheter for some time.

Before this firm enlargement, however, has taken place Dr. Pierce's Anuric Tablets will give happy relief from the trouble.

THE TREATMENT OF ACUTE INFLAMMATION of the prostate is the same as that for inflammation of the bladder, or cystitis.

Doctor Pierce's Anuric Tablets taken freely soon overcome the distress, and by making the urine bland and healing, soon relieve the disease.

THE BRAIN.



URIC ACID AND NERVOUS WEAKNESS.

There are many depressing conditions of mind and body that are associated with the presence of cell waste commonly called an excess of uric acid in the system. It is likely that these agents are the cause of all these miseries. Uric acid is associated with many other poisonous products in the system, and when noted is a sort of an index of the presence of cell waste which is extremely poisonous in character.

Showing the modern knowledge of the main centres wherein are located the senses and perception, as well as motion and speech.

How bad blood can destroy or interfere with the healthy action of these centres may be readily understood as the millions of cells that make up the brain depend on pure blood in enormous quantity to nourish and furnish life. The kidneys remove from the blood the poisons that come from the activity of these cells.

Doctor Pierce's Anuric Tablets have been found of the greatest value in overcoming this condition of system. The Tablets contain ingredients that are especially useful in the elimination of such poisons.

INDEX OF ILLUSTRATIONS TO BE FOUND
IN THIS PAMPHLET.

	PAGE
Amyloid Concretions found where there is an Enlarged Prostate Gland.....	13
Bladder and Kidneys, View of.....	10
Brain Localization.....	20
Caudated Cells from deep structure of Bladder.....	13
Cells of Kidney in Their Natural Layers, View of.....	8
Diagram showing the Blood-vessels.....	2
Enlarged Prostate Gland	19
Epithelial Cells.....	9
Highly Magnified Pus Globules	9
Kidney, Half Section.....	4
Male Pelvis, View of.....	11
Male Bladder from Behind, View of.....	19
Prostate Gland, Section Across Middle of.....	12
Pump Evacuator for Removal of Stone by Crushing in use at Invalids' Hotel	17
Urinary Deposits Highly Magnified.....	7
Urine Tubes of Kidneys.....	8

General Index will be found on page 22.

GENERAL INDEX

	PAGE
Analysis of Urine.....	8
Anuric Tablets, How to Use.....	3, 4, 5, 6, 9, 18
Bladder, The.....	10
Brain, View of The.....	20
Catarrh of Bladder.....	13
Colds, Treatment of.....	6
Cystitis.....	13
Cystitis, Causes of.....	13, 14
Cystitis, Symptoms of.....	14
Cystitis, Treatment of.....	14
Gravel, Palliative Treatment of.....	18
Kidneys and Urinary Diseases, The.....	10
Kidneys in Infectious Diseases.....	6
Mailing Case for Sending Urine.....	8
Menstruation, Scant, Painful, Profuse.....	9
Neuritis and Neuralgia.....	2
Prostate Gland, The.....	12
Prostate Gland, Enlargement of The.....	19
Rheumatism.....	2
Rheumatism, Diet in.....	3
Rheumatism, Treatment of.....	2
Sitz Bath, The.....	15
Stone in Bladder.....	16
Stone from Bladder, Removal of.....	17
Urethra, The.....	12
• Uric Acid and Nervous Weakness.....	20
Urine, Chemical and Microscopical Examination of.....	7, 8, 13
Urine, Description of The.....	13

DOCTOR PIERCE'S FAMILY MEDICINES

If the following medicines cannot be obtained from your nearest dealer in medicines, they will be sent by mail direct from the Laboratory of the World's Dispensary in Bridgeburg, Ont., on receipt of price named below.

DR. PIERCE'S GOLDEN MEDICAL DISCOVERY (in tablets or liquid) is an alterative and vegetable tonic, which invigorates and cleanses the whole system. A good remedy in cases of Liver Complaint, or Biliousness, and habitual Constipation, obstinate Bronchial Coughs. Contains no alcohol. Tablets, small size, 65 cents; large size, \$1.35, by mail. Liquid, \$1.35.

DR. PIERCE'S FAVORITE PRESCRIPTION (in tablet or liquid form) is an herbal tonic especially recommended for the chronic weaknesses of women. Has been found beneficial in cases of Barrenness or Sterility, Uterine and Ovarian Irritation, Morning Sickness, Hysteria, and Nervousness. Tablets, small size, 65 cents; large size, \$1.35, by mail. Liquid, \$1.35. No alcohol.

DR. PIERCE'S ANURIC TABLETS. A New Remedy for Kidney, Bladder and all Uric-Acid Troubles, successfully used by many physicians. Price, 65 cents per bottle; large size, \$1.35, by mail.

DR. PIERCE'S IRONTIC (Iron tonic) TABLETS make redder Blood. If the blood is impoverished, we feel nervous, sleepless, "fidgety;" the blood needs to be built up. If we lack iron in the blood, we are pale, anemic. Price, 65 cents, by mail.

DR. PIERCE'S PLEASANT PELLETS give perfect satisfaction in cases of Bilious and Sick-Headache, Dizziness, Constipation, Indigestion, Bilious Attacks, and many derangements of stomach, liver and bowels. 30 cents, by mail.

DR. PIERCE'S PURIFYING LOTION TABLETS are especially efficacious in obstinate and long-standing cases. Price, 35 cents per box, by mail.

DR. PIERCE'S HEALING SUPPOSITORIES are antiseptic or purifying, deodorizing and healing. Allay Irritation, Congestion and Inflammation and tend to produce a tonic and strengthening effect. 35 cents per box, by mail.

DR. PIERCE'S COUGH SYRUP is a reliable Remedy for Coughs, Colds, Hoarseness, Bronchial

Coughs and non-diphtheritic (or common) Sore Throat. Price, 35 cents.

DR. SAGE'S CATARRH REMEDY is for relief of Acute and Chronic Nasal Catarrh. Price, 65 cents. (That sold by druggists is in bottles; that sent by mail is wrapped with tin foil).

DR. SAGE'S CATARRH REMEDY TABLETS for use in connection with Dr. Pierce's Nasal Irrigator. This preparation, by coming in contact with the nasal mucous membranes, removes mucous and purulent deposits, arrests abnormal secretions and restores the parts to a healthy condition. Price, 65 cents per bottle. Sent by mail with free glass irrigator.

DR. PIERCE'S NASAL IRRIGATOR (glass). Price, 45 cents.

DOCTOR PIERCE'S NASAL DOUCHE. Price, 65 cents, by mail.

DOCTOR PIERCE'S HEALING SALVE is a superior dressing for open, running, or suppurating sores or ulcers. For healing open wounds, cuts and scratches it is unsurpassed. Price, 65 cents per box, by mail.

DOCTOR PIERCE'S ANODYNE PILE OINTMENT is a soothing, cooling, healing, antiseptic application for Piles or Hemorrhoids, and will benefit cases amenable to medical treatment. 65 cents per box.

DR. PIERCE'S COMPOUND EXTRACT OF SMART-WEED may be taken *internally* for "Cramps," Diarrhea, Colic, Pain in the Stomach. Price, small bottle, 35 cents; large size, 65 cents.

DR. PIERCE'S AMMONIO-CAMPHORATED LINIMENT is for the relief of Pains associated with Sprains and Bruises, Muscular Backache, Inflamed or Swollen Joints and Muscular Stiffness. Price, 65 cents per bottle, by mail.

DR. PIERCE'S SOOTHALINE is especially recommended for Sunburn, Chilblains, tired, burning, aching feet, Insect Stings, Neuralgia, also for non-diphtheritic (or common) Sore Throat. Applied after shaving (Mentha) "Soothaline" is very cooling and healing. Price, 65 cents per box.

Invalids' Hotel and Surgical Institute

665 MAIN STREET, BUFFALO, N. Y.

A MODEL SANITARIUM

A PLEASANT REMEDIAL HOME



ORGANIZED WITH

A Full Staff of Physicians and Surgeons

AND EXCLUSIVELY DEVOTED TO THE

TREATMENT OF CHRONIC DISEASES

This Imposing Establishment was designed and erected to accommodate the large number of invalids who visit Buffalo from every State and from Canada, as well as from foreign lands, that they may avail themselves of the professional services of the Staff of Skilled Specialists in Medicine and Surgery which compose the Faculty of this Widely Celebrated Institution.

Pleasantly Located in the Central Part of the City. Elegantly Furnished Throughout and Supplied with Steam Heat and a Passenger Elevator.

The rooms are large and pleasant, with high ceilings and good ventilation. Experienced male and female nurses give patients the best of attention, and no pains are spared to make them comfortable and their stay in the Institution pleasant.

Address for terms:

World's Dispensary Medical Association, Buffalo, N. Y.

