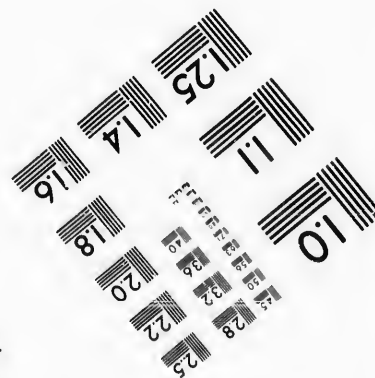
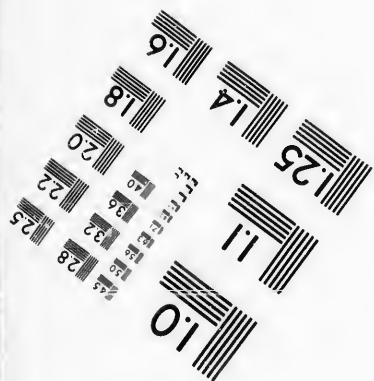
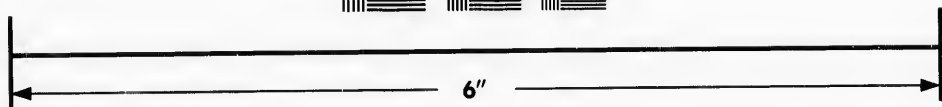
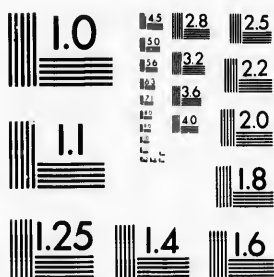


**IMAGE EVALUATION
TEST TARGET (MT-3)**



**Photographic
Sciences
Corporation**

23 WEST MAIN STREET
WEBSTER, N.Y. 14580
(716) 872-4503

25
28
32
36
22
20
18

**CIHM/ICMH
Microfiche
Series.**

**CIHM/ICMH
Collection de
microfiches.**



Canadian Institute for Historical Microreproductions / Institut canadien de microreproductions historiques

11
10
01
57

© 1987

Technical and Bibliographic Notes/Notes techniques et bibliographiques

The Institute has attempted to obtain the best original copy available for filming. Features of this copy which may be bibliographically unique, which may alter any of the images in the reproduction, or which may significantly change the usual method of filming, are checked below.

L'Institut a microfilmé le meilleur exemplaire qu'il lui a été possible de se procurer. Les détails de cet exemplaire qui sont peut-être uniques du point de vue bibliographique, qui peuvent modifier une image reproduite, ou qui peuvent exiger une modification dans la méthode normale de filmage sont indiqués ci-dessous.

- | | |
|--|--|
| <input checked="" type="checkbox"/> Coloured covers/
Couverture de couleur | <input type="checkbox"/> Coloured pages/
Pages de couleur |
| <input type="checkbox"/> Covers damaged/
Couverture endommagée | <input type="checkbox"/> Pages damaged/
Pages endommagées |
| <input type="checkbox"/> Covers restored and/or laminated/
Couverture restaurée et/ou pelliculée | <input type="checkbox"/> Pages restored and/or laminated/
Pages restaurées et/ou pelliculées |
| <input type="checkbox"/> Cover title missing/
Le titre de couverture manque | <input checked="" type="checkbox"/> Pages discoloured, stained or foxed/
Pages décolorées, tachetées ou piquées |
| <input type="checkbox"/> Coloured maps/
Cartes géographiques en couleur | <input type="checkbox"/> Pages detached/
Pages détachées |
| <input type="checkbox"/> Coloured ink (i.e. other than blue or black)/
Encre de couleur (i.e. autre que bleue ou noire) | <input checked="" type="checkbox"/> Showthrough/
Transparence |
| <input type="checkbox"/> Coloured plates and/or illustrations/
Planches et/ou illustrations en couleur | <input type="checkbox"/> Quality of print varies/
Qualité inégale de l'impression |
| <input checked="" type="checkbox"/> Bound with other material/
Relié avec d'autres documents | <input type="checkbox"/> Includes supplementary material/
Comprend du matériel supplémentaire |
| <input type="checkbox"/> Tight binding may cause shadows or distortion
along interior margin/
La reliure serrée peut causer de l'ombre ou de la
distorsion le long de la marge intérieure | <input type="checkbox"/> Only edition available/
Seule édition disponible |
| <input type="checkbox"/> Blank leaves added during restoration may
appear within the text. Whenever possible, these
have been omitted from filming/
Il se peut que certaines pages blanches ajoutées
lors d'une restauration apparaissent dans le texte,
mais, lorsque cela était possible, ces pages n'ont
pas été filmées. | <input type="checkbox"/> Pages wholly or partially obscured by errata
slips, tissues, etc., have been refilmed to
ensure the best possible image/
Les pages totalement ou partiellement
obscurcies par un feuillet d'errata, une pelure,
etc., ont été filmées à nouveau de façon à
obtenir la meilleure image possible. |
| <input type="checkbox"/> Additional comments:
Commentaires supplémentaires: | |

This item is filmed at the reduction ratio checked below/
Ce document est filmé au taux de réduction indiqué ci-dessous.

10X	14X	18X	22X	26X	30X
<input type="checkbox"/>	<input type="checkbox"/>	<input type="checkbox"/>	<input checked="" type="checkbox"/>	<input type="checkbox"/>	<input type="checkbox"/>
12X	16X	20X	24X	28X	32X

The copy filmed here has been reproduced thanks to the generosity of:

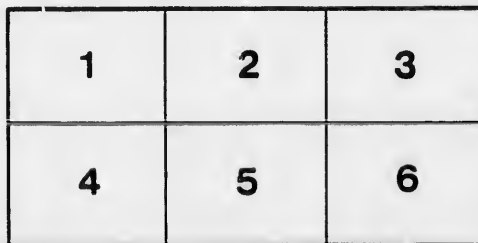
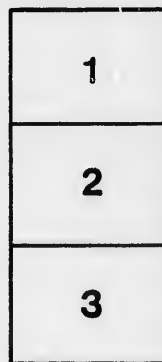
D. B. Weldon Library
University of Western Ontario
(Regional History Room)

The images appearing here are the best quality possible considering the condition and legibility of the original copy and in keeping with the filming contract specifications.

Original copies in printed paper covers are filmed beginning with the front cover and ending on the last page with a printed or illustrated impression, or the back cover when appropriate. All other original copies are filmed beginning on the first page with a printed or illustrated impression, and ending on the last page with a printed or illustrated impression.

The last recorded frame on each microfiche shall contain the symbol \rightarrow (meaning "CONTINUED"), or the symbol ∇ (meaning "END"), whichever applies.

Maps, plates, charts, etc., may be filmed at different reduction ratios. Those too large to be entirely included in one exposure are filmed beginning in the upper left hand corner, left to right and top to bottom, as many frames as required. The following diagrams illustrate the method:



L'exemplaire filmé fut reproduit grâce à la générosité de:

D. B. Weldon Library
University of Western Ontario
(Regional History Room)

Les images suivantes ont été reproduites avec la plus grand soin, compte tenu de la condition et de la netteté de l'exemplaire filmé, et en conformité avec les conditions du contrat de filmage.

Les exemplaires originaux dont la couverture en papier est imprimée sont filmés en commençant par le premier plat et en terminant soit par la dernière page qui comporte une empreinte d'impression ou d'illustration, soit par le second plat, selon le cas. Tous les autres exemplaires originaux sont filmés en commençant par la première page qui comporte une empreinte d'impression ou d'illustration et en terminant par la dernière page qui comporte une telle empreinte.

Un des symboles suivants apparaîtra sur la dernière image de chaque microfiche, selon le cas: le symbole \rightarrow signifie "A SUIVRE", le symbole ∇ signifie "FIN".

Les cartes, planches, tableaux, etc., peuvent être filmés à des taux de réduction différents. Lorsque le document est trop grand pour être reproduit en un seul cliché, il est filmé à partir de l'angle supérieur gauche, de gauche à droite, et de haut en bas, en prenant le nombre d'images nécessaire. Les diagrammes suivants illustrent la méthode.



32X

No. 2

LIST OF VOTERS

— FOR THE —

TOWNSHIP OF CARADOC

— FOR THE —

YEAR 1889.

Recd in Office of CLK of Plas
Aug 29th 89. Charles Hutchinson
Per A.E.P.

STRATHROY, ONT.

Printed at THE AGE Printing House, Front Street.
1889.



LIST OF VOTERS

—FOR THE—

W

TOWNSHIP OF CARADOC

—FOR THE—

YEAR 1889.



STRATHROY, ONT.

Printed at THE AGE Printing House, Front Street.
1889.

SCHEDULE OF POST OFFICES.

1. MOUNT BRYDGES.
2. STRATHROY.
3. DELAWARE.
4. MUNCEY.
5. MELBOURNE.
6. CHRISTINA.
7. GLEN OAK.
8. CAIRNGORM.
9. AMIENS.
10. KOMOKA.
11. POPLAR HILL.
12. LONGWOOD.
13. OSMAN.
14. LONDON.
15. ARKONA.

16. TALBOTVILLE.
17. APPIN.
18. BYRON.
19. TORONTO.
20. SARNIA.
21. CORINTH.
22. IVAN.
23. TEMPO.
24. LAMBETH.
25. ST. THOMAS.
26. MIDDLEMISS.
27. GLENCOE.
28. RIDGETOWN.
29. DELHI.
30. TILSONBURG.

M

Compr

PA

	Roll No.
J	28
J	29
	30
J	31
J	34
J	113
J	125
J	126
J	127
	128
J	129
J	130
J	131
J	132
J	133
J	134
J	135
J	137
J	139
	1271
J	530

J	239	(
J	246	(
J	256	(
	257	
	260	
	261	(
J	263	(
	264	(

VOTERS' LIST FOR 1889, Municipality of Caradoc.

Polling Sub-Division No. 1,

Comprising all that portion of the Township lying East of the Side Road between
Lots 12 and 13, and South of the 1st Con.

PART 1.—Persons entitled to Vote at BOTH Municipal Elections and Elections to the Legislative Assembly.

Roll No.	NAME.	LOT.	Concession or Street.	Other Description.	P.O.
J 28	Adams, Wm	W pt N hf 22	R 1 N	M F and T	3
J 29	Allan, Robert	pt N hf S hf 21	R 1 N	M F and O	3
30	Adams, James	pt S W cor 18	R 1 N	M F and O	3
J 31	Anderson, Harry	N hf 19	R 1 S	M F and O	3
J 34	Anderson, John D.	N hf 18	R 1 S	M F and O	3
J 113	Bateman, George	N pt 4, pt S hf 12	E M R, R 1 S	M F and O	4
J 125	Brodie, Duncan C.	pt 6, pt S hf 18	E M R, R 3 S	M F and O	4
J 126	Brodie, Hugh	pt 6, pt S hf 18	E M R, R 3 S	M F and O	4
J 127	Brodie, John	pt 6, pt S hf 18	E M R, R 3 S	M F and O	4
128	Bateman, John T.	N hf N hf 17	R 3 S	M F and O	3
J 129	Bateman, Charles	N pt 18	R 3 S	M F and O	3
J 130	Bartlett, Wm	W hf S hf 17	R 1 S	M F and O	3
J 131	Broom, Samuel	E hf 4	W M R	M F and O	3
J 132	Burwell, Mahlon	N pt 17, pt S hf 17	R 4 & 5 S	M F and O	1
J 133	Burwell, George V.	pt S hf 19, pt 18	R 3 & 4 S	M F and O	1
J 134	Burwell, Francis	N pt 18, & other prem	R 4 & 5 S	M F and O	1
J 135	Bathuret, Wm	E pt 21, 22	R 2 S	M F and T	1
J 137	Brown, George	W pt S hf 21	R 1 S	M F and T	1
J 139	Bartlett, Jonathan	S hf 19, pt S hf 20	R 1 S	M F and O	3
1271	Burwell, Beverly	21, 22, 23	R 1 N, Del W.	M F and O	3
J 530	Ba hurst, Ephraim	24	R 1 S	M F and T	3
J 239	Clark, John G	N pt 19	R 4 S	M F and O	3
J 246	Clark, Edward	pts 22 & 23	R 1 N	M F and O	1
J 256	Cobbald, James R.	N hf 13, pt 14	R 1 N	M F and T	6
257	Cobbald, James	N hf 13, pt 14	R 1 N	M F and T	6
260	Clark, Joseph	pts 18 & 19	R 1 N	M F and O	1
261	Countler, John	W hf 4	W M R	M F and O	4
J 263	Collins, Thomas	N hf 17	R 4 S	M F and T	3
264	Caves, George	pts 16 & 17	R 1 S	M F and T	3

Roll No.	NAME.	LOT.	Concession or Street.	Other Description.	P.O.
J 266	Carruthers, George	S hf 16, pt 15	R 1 N	M F and O	6
J 273	Cox, James	6	W M R	M F and O	4
J 274	Coveny, John sr	N hf 19, S hf 17	R 3 S	M F and O	3
J 275	Coveny, Thomas	N hf 19, S hf 17	R 3 S	M F and T	3
J 276	Coveny, John J	N hf 19, S hf 17	R 3 S	M F and T	3
J 277	Coveny, Edward	N hf 19, S hf 17	R 3 S	M F and T	3
J 278	Cobban, Wm	S pt 3	W M R	M F and O	4
J 279	Chambers, James	pt 12 & 13	R 5 S	M F and O	4
280	Chambers, John B	pt 12 & 13	R 5 S	M F and FS	4
281	Chambers, Thomas	pt 12 & 13	R 5 S	M F and FS	4
J 282	Cobban, Robert	S pt 12	R 5 S	M F and O	4
J 284	Clark, John N	N hf 3	E M R	M F and O	4
285	Clark, Alex	N hf 3	E M R	M F and FS	4
1273	Cudney, Wm	8, Delaware W	R 1 N	M F and T	3
J 27	Cobbald, James	W pt N hf 22	R 1 N	M F and O	6
J 334	Coulter, John	S pt 12	R 5 S	M F and O	4
952	Caves, John	W pt S hf 15	R 1 S	M F and O	6
J 313	Donaldson, David J.	N hf 20	R 1 S	M F and O	3
314	Daunt, George	N pt N hf 20	R 1 N	M F and O	3
J 319	Donovan, Wm	S hf N hf 20	R 2 S	M F and O	3
1274	Deadman, Henry	5 King st	R 1 N, Del W	M F and O	3
331	Erwin, George	E hf S hf 14	R 1 S	M F and O	6
332	Erwin, Albert	E hf S hf 14	R 1 S	MF and FS	6
J 333	Erwin, James	W pt S hf 14	R 1 S	M F and O	6
335	Evans, Wm S	S pt 12	R 5 S	M F and T	4
J 353	Fisher, Wm	N hf 20	R 1 N	M F and T	3
359	Forbes, Duncan	pt S hf 18	R 1 N	M F and O	3
J 361	Fisher, James	N hf 16	R 1 S	M F and T	6
J 362	Fisher, George	pt N hf 13	R 1 S	M F and O	6
J 363	Fisher, James	N hf 13	R 1 S	M F and O	6
364	Fisher, Wm H	N hf 13	R 1 S	M F and FS	6
J 367	Faulds, Thomas	7	W M R	M F and O	4
368	Faulds, Edward A	7	W M R	M F and FS	4
369	Faulds, John F	7	W M R	M F and FS	4
J 370	Faulds, Wm N	2	W M R	M F and O	4
371	Forsythe, John	S pt 1	E M R	M F and O	4
372	Forsythe, Arch	S pt 1	E M R	M F and O	4
J 373	Forsythe, David	N pt 12	R 5 S	M F and O	4
374	Forsythe, James	pt N hf 12	R 5 S	M F and O	4
J 416	Giles, John	S hf 13	R 1 S	M F and O	6
418	Goodrich, George	W cor S hf 17	R 1 S	M F and T	6
J 419	Gnest, Wm A	N hf 20	R 4 S	M F and O	3
J 420	Giles, Wm jr	22, 23 pt 21	R 4 S	M F and T	3
1275	Giles, Wm sr	3 & 4 King st Del W	R 1 N	M F and O	3

Roll No.

463

J 465

J 475

J 477

J 483

J 484

488

J 490

J 491

J 492

1276

J 1277

J 485

J 501

J 502

503

J 504

531

535

558

559

560

J 561

J 562

J 563

J 565

J 566

J 567

J 568

1278

J 591

693

J 696

698

J 699

J 700

J 701

1279

1286

er
tion. P.O.
and O.... 6
and O.... 4
and O.... 3
and T.... 3
and T.... 3
and T.... 3
and O.... 4
and O.... 4
and F S .. 4
and O.... 4
and O.... 4
and F S .. 4
and T.... 3
and O.... 6
and O.... 4
and O.... 6
and O.... 3
and O.... 3
and O.... 3
MF and O .. 3
F and O.... 6
and F S .. 6
F and O.... 6
F and T.... 4
F and O.... 3
F and O.... 3
F and O.... 6
F and T.... 6
F and O.... 6
F and O.... 6
F and F S .. 6
F and O.... 4
F and F S .. 4
F and F S .. 4
F and O.... 4
F and O.... 4
F and O.... 4
F and O.... 4
F and O.... 4
F and O.... 4
F and O.... 6
F and T.... 6
F and O.... 3
F and T.... 3
F and O.... 3

Roll No.	NAME.	LOT.	Concession or Street.	Other Description.	P.O.
463	Haws, George	S E cor N hf 22	R 1 N	M F and O	1
J 465	Hay, John	S pt 22	R 1 N	M F and T	3
J 475	Haws, John	N hf 19	R 2 S	M F and T	3
J 477	Hetley, Wesley	W hf S hf 15	R 1 N	M F and O	6
J 483	Howe, John M	S pt N pt 7	E M R	M F and O	3
J 484	Howe, John F	N hf 17	R 2 S	M F and O	3
488	Hannan, Henry	S pt 12	R 5 S	M F and T	4
J 490	Haggarty, Thomas	Pt blk A	E M R	M F and T	3
491	Haggarty, John	E pt S hf 19, pt 20	R 3 S	M F and O	3
J 492	Haggarty, George	S hf 20 & other prem	R 4 S	M F and O	3
1276	Hartford, Edward	9 King st Del W	R 1 N	M F and O	3
J1277	Haws, Samuel	{ Ad st 12, 13, 14 and } { other prem Del W }	R 1 N	M F and O	3
J485	Howe, James	N hf 17	R 2 S	M F and O	19
J 501	Janes, Henry	S W cor E hf 20	R 1 N	M F and O	3
J 502	Jenkins, Alfred	E pt S hf 17	R 1 S	M F and O	3
503	Jones, Edwin	Bkn Ft 20	R 5 S	M F and O	3
J 504	Jarmain, Henry	W hf N hf 20	R 2 S	M F and O	3
531	Kipp, Wm H	24	R 1 S	M F and T	3
535	King, Thomas	S cor S hf 17	R 2 S	M F and O	3
558	Lewis, John	N cor S hf 22	R 1 N	M F and O	3
559	Lowthian, Richard	23	R 1 N	M F and O	3
560	Lowthian, Richard	23	R 1 N	M F and F S	3
J 561	Lockwood, Henry jr.	S pt N $\frac{1}{2}$ 20 & other pre	R 1 S, R 1 N	M F and O	3
J 562	Lockwood, Chas H	S hf 21	R 1 N	M F and O	3
J 563	Lockwood, Wm W	pt S hf 20	R 1 N	M F and O	3
J 565	Luce, Asa	pt 17	R 1 S, R 1 N	M F and O	3
J 566	Luce, George	pt 17	R 1 S, R 1 N	M F and O	3
J 567	Lockwood, John A	N hf 15	R 1 S	M F and O	6
J 568	Lang, James	2	E M R	M F and O	4
1278	Lockwood, Henry sr.	9 to 13 K st Del W	R 1 N	M F and O	3
J 591	Miller, Frank	S pt 3	E M R	M F and T	4
693	McKenzie, John	S W cor S hf 13	R 1 N	M F and O	6
J 696	McGregor, Peter	pt 1 and D	W M R	M F and O	4
698	McIntyre, Dugald	pt 12	W M R	M F and O	4
J 699	McGregor, Alex	pt 12	R 5 S	M F and O	4
J 700	McGregor, Thomas	pt D	W M R	M F and O	4
J 701	McGregor, John	S pt D	W M R	M F and O	4
1279	McFee, Alex	Bir st 18, 19, 20, Del W	R 1 N	M F and O	3
1286	McFee, George	Park 1 Del W	R 1 N	M F and O	3

Roll No.	NAME.	LOT.	Concession or Street.	Other Description.	P.O.
J 720	Nagle, William	N hf 15 & other prem.	R 1 N	M F and O	1
J 721	Nagle, John	S pt 19	R 1 N	M F and O	3
J 722	Nagle, Walter	E hf N hf 17	R 1 S	M F and O	3
J 723	Nash, Ephriam	N hf 14	R 1 S	M F and O	6
J 726	Nagle, Robert	S hf 18	R 1 S	M F and O	3
J 727	Nagle, Samuel	N pt 3	W M R	M F and O	4
1280	Nagle, Thomas	King st 1 & 2 Del W	R 1 N	M F and O	3
	<i>Wash Henry</i>	<i>N 1/2 14</i>	<i>A 13</i>	<i>M 7 " 15</i>	<i>6</i>
783	Omn, Joseph	S W cor 18	R 1 N	M F and T	1
J 740	Orr, Rowland	W pt N hf 5	W M R	M F and O	6
J 791	Pulling, James	W 1/2 S 1/2 18, pt 17	R 2 S	M F and O	1
J 792	Pulling, Henry	W 1/2 S 1/2 18, pt 17	R 2 S	M F and F S	1
793	Pulling, Charles	W 1/2 S hf 18, pt 17	R 2 S	M F and F S	1
J 800	Portsmouth, Peter	S hf 16	R 1 S	M F and O	3
801	Portsmouth, Richard	S hf 16	R 1 S	M F and F S	3
802	Portsmouth, Thomas	S hf 16	R 1 S	M F and F S	3
804	Patterson, Wm sr	pt 21	R 4 S	M F and T	3
J 805	Patterson, Wm jr	pt 21	R 4 S	M F and T	3
806	Price, Richard	S hf 8 & other prem	W M R	M F and O	1
807	Price, Samuel	S hf 8 & other prem	W M R	M F and F S	1
808	Price, Wm	S hf 8 & other prem	W M R	M F and F S	1
J 1281	Penfold, Henry	pt 23&24 & other prem.	R 1 N	M F and O	3
1282	Penfold, Joseph	pt 23&24 & other prem.	R 1 N	M F and F S	3
1283	Penfold, George E	pt 23&24 & other prem.	R 1 N	M F and F S	3
1284	Pulling, Wm	Sewel lot&6, 7, Del W	R 1 N	M F and O	3
1285	Pulling, Adrian G	Sewel lot&6, 7, Del W	R 1 N	M F and T	3
954	Price, Thomas	N hf 18	W M R	M F and O	1
J 833	Reep, Wm sr	N W pt 20	R 3 S	M F and O	3
834	Reep, Wm jr	N W pt 20	R 3 S	M F and F S	3
835	Reep, John	N W pt 20	R 3 S	M F and F S	3
837	Rockey, Wm H	pt gore 20 and 21	R 1 N	M F and O	1
J 852	Robinson, Robert	W hf 5	E M R	M F and O	4
853	Robinson, Henry J	W hf 5	E M R	M F and F S	4
J 854	Reily, John D	S hf S hf 19	R 2 S	M F and O	3
J 855	Reily, Wm H	W hf S hf 19, pt 18	R 2 S	M F and O	3
856	Reily, Wm J	W hf S hf 19, pt 18	R 2 S	M F and F S	3
941	Sweeney, John	pt N hf 21	R 3 S	M F and O	3
J 942	Seabrook, Sidney	22, 23, pt 21	R 1 S	M F and O	3
J 943	Stiltz, Charles	E hf N hf 19	R 1 N	M F and O	1
950	Sleath, Alfred	pt S hf 13	R 1 N	M F and O	6
951	Smith, Robert	pt S hf 13	R 1 N	M F and O	6
J 953	Shaw, Wm	W pt S hf 15	R 1 S	M F and T	6
J 955	Stuart, Wm	N hf 18	W M R	M F and T	6
956	Stuart, Charles	N pt E pt 4	E M R	M F and O	1
957	Stuart, John	N pt E pt 4	E M R	M F and F S	1
J 958	Stuart, Charles A	W hf E hf 5	E M R	M F and T	1
487	Sweeney, John	S pt 12	R 5 S	M F and O	4

POLLING SUB-DIVISION No. 1.

Roll No.	NAME.	LOT.	Concession or Street.	Other Description.	P.O.
J 962	Thompson, Thomas	S hf 14, and other pre	R 1 N	M F and O	6
J 996	Toles, Peter	E pt S 1/2 18 & other prem.	R 1 N	M F and O	1
997	Tull, Samuel	pt S hf 13	R 1 N	M F and O	6
J 1002	Tull, John	NAS 1/2 17, & other prem.	R 2 S	M F and O	1
J 1109	Thomas, Joseph	S hf 20	R 2 S	M F and T	3
1272	Vrooman, John	8 Del West	R 1 N	M F and O	3
1003	Vennor, John	pt 1	E M R	M F and O	4
J 1013	Vail, John	pt N hf 14	R 1 N	M F and O	6
J 1095	Waters, Archie	W pt N hf 18	R 1 N	M F and O	1
1096	Waters, Wm H	E pt N hf 18	R 1 N	M F and O	1
1098	Whiting, James	S hf E pt 4	E M R	M F and O	1
J 1103	Williamson, John	E hf S hf 15	R 1 S	M F and O	6
J 1104	Whiting, Wm B	pt 1	W M R	M F and O	4
1105	Whiting, John B	pt 1	W M R	M F and F S	4
1106	Whiting, Wm F	pt 1	W M R	M F and F S	4
J 1107	Walker, Barton	E hf 5	E M R	M F and O	4
J 1111	Weld, Henry J	S W pt 21	R 2 S	M F and O	3
1287	Wright, Robert	Ad st 23 Del W	R 1 N	M F and T	3
J 421	Wightman, John	22 & 23	R 4 S	M F and T	3
J 529	Watkins, James	24	R 1 S	M F and T	3

PART II.—Persons entitled to Vote at Municipal Elections ONLY.

283	Chase, H P	N W cor 1	E M R	O	20
247	Clark, Thursa	pt N hf 21	R 1 N	O	1
357	Fisher, Rachel	N hf 20	R 1 N	O	3
803	Gowanlock, John	pt 21	R 4 S	O	23
417	Goodrich, Nancy	W cor S hf 17	R 1 S	O	6
464	Glemmie, George D	S pt 22	R 1 N	O	3
486	Higgs, Mary	S pt 1	E M R	O	4
528	Moore, Mary	24	R 1 S	O	30
714	Nagle, Amelia	N hf 18	R 2 S	O	3
739	Orr, Nancy	E pt N hf 5	W M R	O	6
255	Robinette, Thos C	N hf 13	R 1 N	O	19
489	Scott, Martha	pt Blk A	E M R	O	4
959	Stuart, Alex	W hf E hf 5	W M R	O	27
1108	Weld, Jane	S hf 20	R 2 S	O	3
590	Whiting, Kate E	S W pt A	E M R	O	4

PART III.—Persons entitled to Vote at Elections to the Legislative Assembly ONLY.

32	Anderson, John D	N hf 19	R 1 S	M F	3
33	Ardell, Richard	N hf 19	R 1 S	M F	3
35	Adams, Edward	N hf 13	R 1 N	M F	3

*Comments
of
Leahy
at
the
table*

POLLING SUB-DIVISION No. 1.

Roll No.	NAME.	LOT.	Concession or Street.	Other Description.	P.O.
1298	Bateman, David	S W cor E hf 20	R 1 N	M F	3
262	Cloustin, Wm	pt 1 and D	W M R	M F	4
286	Clark, Wm	N hf 3	E M R	M F	4
287	Currie, George	N hf 17	R 2 S	M F	6
375	Forsythe, Mathew	pt N hf 12	R 5 S	M F	4
376	Forsythe, Geo A	pt N hf 12	R 5 S	M F	4
534	King, Wm	S cor S hf 17	R 2 S	M F	3
569	Lesley, Wm	N pt 19	R 4 S	M F	4
582	Morris, Hugh	W hf N hf 19	R 1 N	M F	6
589	Marsh, Alfred	N pt 17	R 5 S	M F	1
692	McNorton, Thomas	S hf 17	R 1 N	M F	6
697	McGregor, John sr	pt 1 and D	W M R	M F	4
1301	McDonald, Hartman	S pt E hf 18	R 1 N	M F	1
809	Price, Robert	S hf 8	W M R	M F	1
934	Smith, Arthur G	pt 12	R 5 S	M F	4
1099	Wilson, John	pt 18	R 4 S	M F	1

Polling Sub-Division No. 2,

Comprising all that portion of the Township lying West of the Side Road between
Lots 12 and 13, and South of the 2nd Con.

PART 1.—Persons entitled to Vote at BOTH Municipal Elections and Elections to the Legislative Assembly.

Roll No.	NAME.	LOT.	Concession or Street.	Other Description.	P.O.
J 106	Beattie, Samuel R	W hf S hf 6	1	M F and O	12
J 107	Bateman, Allan W	S hf 10	1	M F and O	1
108	Bateman, Ed C	N hf 12	R 1 N	M F and O	6
J 114	Bateman, Wm R	N W $\frac{1}{4}$ S $\frac{1}{2}$ 12, pt 12	R 1 S, R1N	M F and O	6
115	Bateman, Charles	N W $\frac{1}{4}$ S $\frac{1}{2}$ 12, pt 12	R 1 S, R1N	M F and O	6
J 116	Bateman, Thomas	W hf S hf 12	R 1 N	M F and O	6
117	Bateman, Robert	pt S hf 11, pt N hf 11	R 1 S, R1N	M F and O	6
118	Bateman, Edward	N $\frac{1}{2}$ 10 and other prem	R 1 S	M F and Oe	3
J 119	Bateman, Wm J	N $\frac{1}{2}$ 10 and other prem	R 1 S	M F and O	6
120	Bateman, Edward	N $\frac{1}{2}$ 10 and other prem	R 1 S	M F and F S	6
121	Bateman, Archie C	N $\frac{1}{2}$ 10 and other prem	R 1 S	M F and F S	6
J 122	Bnreh, Wm	S W pt S hf 7	R 1 S	M F and T	5
J 123	Bateman, Charles T	S hf 11	R 1 S	M F and O	5
J 124	Bateman, Sidney	S E corner S hf 12	R 1 S	M F and O	6
1304	Bancroft, Joseph	36, 37, 38	R 1 N, Mel	M F and O	5
138	Beceroft, Wm	pts 9 and 12	R 1 N	M F and O	1
J 226	Cawthrope, George	N hf 1	1	M F and O	12
227	Cawthrope, George E	N hf 1	1	M F and F S	12
232	Clark, Nathaniel	N hf 10 & other prem	1	M F and O	1
J 233	Clark, James	N hf 10 & other prem	1	M F and T	1
J 234	Clark, William	N hf 10 & other prem	1	M F and T	1
235	Coleman, Wm H	N hf 11	1	M F and O	1
J 236	Coleman, Darins	N hf 11, pt 12	1 and 2	M F and T	1
1298	Coleman, Arthur	N hf 11, pt 12	1 and 2	M F and F S	1
J 250	Cooper, George F	S $\frac{1}{2}$ N $\frac{1}{2}$ 2, & other prem	1	M F and T	5
252	Cavan, Hugh	S hf 1	1	M F and T	5
J 253	Cavan, Caleb	S hf 1	1	M F and T	5
J 254	Cavan, James	S hf 1	1	M F and T	5
J 267	Carruthers, Robert	pt N $\frac{1}{2}$ 6, pt S $\frac{1}{2}$ 6	R 1 N	M F and O	5
J 268	Carruthers, Arthur	pt S hf 5, pt 6	R 1 N	M F and O	5
J 270	Carruthers, James	S hf 4	R 1 N	M F and O	5
271	Cady, Isaac M	W pt N hf 1	R 1 S	M F and O	5
J 272	Campbell, John C	pt N hf 1	R 1 S	M F and O	5
1227	Cady, John H	72 Melb	R 1 N	M F and O	5
1228	Coulter, Ralph	47, 48	R 1 N	M F and O	5
1229	Cooper, James	56, pt 55 Melb	R 1 N	M F and O	5
1230	Cooper, Thomas	29, 30, Melb	R 1 N	M F and O	5
1231	Cooper, John	29, 30, Melb	R 1 N	M F and O	5
1232	Campbell, Neil	Sub 10, pt 1	R 1 N	M F and O	5

Roll No.	NAME.	LOT.	Concession or Street.	Other Description.	P.O.
J 315	Duncanson, Dugald	W hf N hf 2	R 1 N	M F and O	5
J 317	Dennis, Joseph	S hf 3	1	M F and T	5
J 318	Duncanson, Donald	N hf 5	R 1 S	M F and T	5
J 329	Errett, Thomas	N hf 3	R 1 N	M F and O	5
J 330	Errett, Henry	E hf S hf 7	R 1 N	M F and O	5
1233	Evans, Alfred C	E cor mill prop	R 1 N	M F and O	5
J 566	Fenwick, Edward	S hf 8	R 1 N	M F and O	5
1234	Fletcher, Robert	Sub 8 Mel	R 1 S	M F and O	5
1235	Ferguson, Jacob	26 and 28 Melb	R 1 N	M F and O	5
J 414	Griffith, Fred L	S hf 3 and other prem	R 1 N	M F and T	5
J 415	Grigg, Wm	S hf 5, pt 6	R 1 S	M F and O	5
1236	Gowman, Thomas	E cor 1, N cor 1	R 1 N, R 1 S	M F and O	5
1237	Graves, Josiah	67 to 70, Melb	R 1 N	M F and O	5
466	Howe, Patrick	S hf 8, pt N hf 8	1	M F and O	6
467	Howe, Edward	S hf 8, pt N hf 8	1	M F and F S	6
468	Howe, Francis	S hf 8, pt N hf 8	1	M F and F S	6
J 469	Howe, Timothy	S hf 12	1	M F and O	6
J 470	Howe, James	E pt S hf 11	1	M F and O	6
J 471	Haggarty, John A	W hf N hf 8	R 1 S	M F and O	6
J 473	Haggarty, Andrew	S hf 8, E hf N hf 6	R 1 S	M F and O & T	6
478	Halloway, Alfred	E pt S hf 5	R 1 N	M F and O	6
J 479	Haggarty, James	S hf 6	R 1 S	M F and O	5
J 482	Haggarty, George J	S hf 10	R 1 S	M F and T	6
1238	Harvey, Henry	S pt mill prop Melb	R 1 N	M F and O	5
1239	Hill, Frederick	43 and 44, Melb	R 1 N	M F and O	5
J 1240	Hardy, Thomas	49, 64, 65, Melb	R 1 N	M F and O	5
1241	Harvey, Frank	19 Melb	R 1 S	M F and O	5
988	Hendrie, James	pt N hf 7 and 8	R 1 N	M F and O	5
1242	Johnston, Arthur N	Sub 7	R 1 S	M F and O	5
523	Kidd, Thomas	S hf 9	1	M F and O	6
J 524	Kidd, Joseph R	E hf N hf 10	R 1 N	M F and O	6
J 525	Kidd, John J	E hf N hf 10	R 1 N	M F and O	6
J 533	Kain, John	S cor S hf 11	R 1 N	M F and T	6
1243	Long, Joseph	T, 13 to 16 Melb	R 1 N	M F and O & T	5
1246	Lock, J. H. <i>Hugh W.</i>	Sub 11, Melb	R 1 N	M F and T	5
1247	Lane, Alfred	Sub 25, Melb	R 1 S	M F and O	5

POLLING SUB-DIVISION No. 2.

11

Other
Description. P.O.
M F and O.... 5
M F and T.... 5
M F and T.... 5

M F and O.... 5
M F and O.... 5
M F and O.... 5

M F and O.... 5
M F and O.... 5
M F and O.... 5

M F and T.... 5
M F and O.... 5
M F and O.... 5
M F and O.... 5

M F and O.... 6
M F and F S.... 6
M F and F S.... 6
M F and O.... 6
M F and O.... 6
M F and O.... 6
M F and O & T.... 6
M F and O.... 6
M F and O.... 5
M F and T.... 6
M F and O.... 5
M F and O.... 5
M F and O.... 5
M F and O.... 5
M F and O.... 5
M F and O.... 5

M F and O.... 5

M F and O.... 6
M F and O.... 6
M F and O.... 6
M F and T.... 6

M F and O & T.... 5
M F and T.... 5
M F and O.... 5

Roll No.	NAME.	LOT.	Concession or Street.	Other Description.	P.O.
580	Marshman, Benjamin	pt S hf 3, pt 2	1 & R 1 N	M F and O	5
J 583	Mills, James	pt S hf 9	R 1 N	M F and O	6
584	Mills, Alfred	pt S hf 9	R 1 N	M F and F S	6
J 585	Marshman, George	N W corner N hf 2	R 1 S	M F and O	5
J 592	Mills, Edmund	E hf N hf 12	R 1 S	M F and O	6
316	Marshman, Simcon	S hf 3	1	M F and O	5
J 479	Marshman, John	S hf 3	R 1 S	M F and O	5
J 581	Muldon, John	W hf N hf 10	R 1 N	M F and O	6
677	McRoberts, James sr	N hf 5	1	M F and O	12
J 678	McRoberts, James jr	N hf 4	1	M F and O	12
J 679	McCracken, John H	E hf S hf 2	1	M F and O	12
J 685	McCracken, Samuel	N hf 7 and other prem	1	M F and O	12
686	McCracken, Ambrose	N hf 7 and other prem	1	M F and F S	12
687	McCracken, Ernest	N hf 7 and other prem	1	M F and F S	12
J 691	McLear, Allan	N pt 9	R 1 N	M F and T	6
J 694	McNeil, Malcolm	pt S hf 1	R 1 S	M F and O	5
J 695	McNeil, John A	pt S hf 1	R 1 S	M F and O	5
J 1248	McRoberts, John	1 and 2 Melb	R 1 N	M F and O	5
1250	McLellan, David	N W pt mill prop	R 1 N	M F and O	5
J 1251	McDougall, Alex	pt N hf 1	R 1 S	M F and T	5
J 719	Near, Wilson	N hf 4	R 1 N	M F and O	5
J 724	Nagle, Charles	S hf 4 and other prem	R 1 S	M F and O	5
725	Nagle, Thomas E	W hf S hf 7	R 1 N	M F and O	6
J 1249	Nichols, Richard	1 and 2 Melb	R 1 N	M F and O	5
J 796	Porter, Robert	pt S hf 5, E hf S hf 5	R 1 N, 1	M F and O	5
797	Porter, John	pt S hf 5, E hf S hf 5	R 1 N, 1	M F and F S	5
798	Porter, Francis	pt S hf 5, E hf S hf 5	R 1 N, 1	M F and F S	5
799	Portas, Joseph	S hf 2	R 1 S	M F and T	5
1252	Petch, Isaac	Sub 9 Melb	R 1 N	M F and T	5
J 846	Richards, George	E pt N hf 4	R 1 S	M F and O	5
J 847	Richards, Wilson	W pt 3, pt S hf 1	R 1 S	M F and O	5
848	Richards, George sr	N hf 5, E pt 3	R 1 S, R 1 N	M F and O	5
J 849	Richards, James	N hf 5, E pt 3	R 1 S, R 1 N	M F and O	5
J 850	Richards, Wm C	pt N hf 2	R 1 S	M F and O	5
J 1253	Robinson, Wm J	pt 1	R 1 N	M F and O	5
1256	Richards, Edmund	Sub 1 Melb	R 1 N	M F and T	5
J 930	Stockings, David	E hf N hf 2, pt 3	1	M F and O & T	12
J 933	Stover, Peter	E hf N hf 8	1	M F and T	6
944	Small, Andrew	S hf 7 and other prem	1	M F and O	5
J 945	Small, Robert	S hf 7 and other prem	1	M F and T	5

Roll No.	NAME.	LOT.	Concession or Street.	Other Description.	P.O.
J 946	Small, Andrew jr	S hf 7 and other prem	1	M F and T	5
J 947	Small, James	S hf 7 and other prem	1	M F and T	5
J 948	Sawyer, Wm E	pt S hf 11	1	M F and O	1
1257	Sawyer, George E	pt S hf 11	1	M F and F S	1
1257	Sponenburg, Geo W	pt 6, Melbourne	R 1 S	M F and O	5
1258	Seuddamore, Henry T	71, 40, 41 Melbourne	R 1 N	M F and O	5
983	Trott, John sr	N hf 9	1	M F and O	1
J 984	Trott, Wm A	N hf 9	1	M F and T	1
J 989	Trott, Wm S	pt N hf 7, 8	R 1 N	M F and T	5
J 990	Trott, Edward	N hf 11	R 1 N	M F and T	6
J 991	Trott, John jr	N hf 11	R 1 N	M F and T	6
J 999	Tanner, George	S hf 7	R 1 S	M F and T	6
J1260	Tolson, Wm	12, 73, 74, 75, 76 Mel	R 1 N	M F and T	5
J1261	Tolson, John	12, 73, 74, 75, 76 Mel	R 1 N	M F and T	5
J1262	Tolson, Wm E	12, 73, 74, 75, 76 Mel	R 1 N	M F and T	5
J1263	Tolson, Joseph H	12, 73, 74, 75, 76 Mel	R 1 N	M F and O	5
J1264	Torrence, James W	59 to 63, Melbourne	R 1 N	M F and O	5
J1266	Vail, George	17 & 18, Melbourne	R 1 S	M F and T	5
J1094	Wellman, James	W pt 1	R 1 N	M F and O	5
J1100	Williams, Wm E	S hf 10	R 1 N	M F and O	6
1101	Williams, Richard	9	R 1 S	M F and O	6
1102	Williams, Rich A	9	R 1 S	M F and F S	6
1267	Wellman, Charles	N cor mill prop, Mel	R 1 N	M F and O	5
1268	Wellman, George	53, 54, 55, 25, Mel	R 1 N	M F and O	5
1270	Wellman, Joseph	pt 6, 5, Melbourne	R 1 S	M F and T	5
J1118	Young, Wm	N $\frac{1}{2}$ 12, and other prem	1	M F and O	1

PART II.—Persons entitled to Vote at Municipal Elections ONLY.

223	Coun, Ann	39 Mel, 16 Mid	R 1 N, 2	T & O	5
249	Cocper, Eliza	S $\frac{1}{2}$ W $\frac{1}{2}$ 2, & other prem	1	O	5
269	Carruthers, Delilah	N hf N W $\frac{1}{4}$ 6	R 1 S	O	5
1244	Corneil, Christopher	13, 14, 15, 16, Mel	R 1 N	O	5
413	Griffith, Mary J	S $\frac{1}{2}$ 3, and other prem	R 1 N	O	5
1265	Kent, Wm	17 and 18 Melbourne	R 1 S	O	29
532	Lucas, Alonzo	S cor S hf 11	R 1 N	O	14
W 472	Marshman, Job	S $\frac{1}{2}$ 8	R 1 S	O	6
690	McCracken, Cath'ne	N pt 9	R 1 N	O	6

POLLING SUB-DIVISION No. 2.

13

Roll No.	NAME.	LOT.	Concession or Street.	Other Description.	P.O.
481	Nagle, Mary.	S hf 10.	R 1 S	O	6
932	Orr, Nancy	E hf N hf 8.	1	O	6
1254	Roach, Wm H	pt 1	R 1 S	O	28
995	Trayte, George.	pt E hf N hf 1	R 1 S	O	5
1097	Watson, Frances	W hf N hf 12.	R 1 S	O	6

PART III.—Persons entitled to Vote at Elections to the Legislative Assembly ONLY.

365	Fisher, Benjamin.	S E pt S hf 12	R 1 S	M F	6
	<i>Leitch Hugh</i>	<i>pt 1</i>		<i>m f</i>	<i>5- W</i>
1306	Murray, H B.	pt 1	R 1 N	M F	5
	<i>Mc Alpine Alpuda</i>	<i>1</i>	<i>R 1 S</i>	<i>m f</i>	<i>5- W</i>
795	Perkins, John	N W cor 9	R 1 N	M F	6
	<i>Turner George Starratt</i>	<i>1</i>	<i>R 1 N</i>	<i>m f</i>	<i>5- W</i>
843	Ruckle, David	E hf N hf 10	R 1 N	M F	6
1294	Wood, William.	pt 10	R 1 N	M F	6
	<i>Biggar Ernest</i>	<i>pt 2</i>	<i>1</i>	<i>m f</i>	<i>5- W</i>
	<i>Campbell Joseph</i>	<i>pt 1</i>		<i>m f</i>	<i>5- W</i>
	<i>Campbell Dugald</i>	<i>pt 1</i>		<i>m f</i>	<i>5- W</i>
	<i>Harvey John</i>	<i>pt 1</i>		<i>m f</i>	<i>5- W</i>
	<i>Hardy Francis.</i>	<i>pt 1</i>	<i>R 1 N</i>	<i>m f</i>	<i>5- W</i>
	<i>Hearn Nelson Edward.</i>	<i>pt 1</i>	<i>R 1 N</i>	<i>m f</i>	<i>5- W</i>
	<i>Holloway Ernest</i>			<i>m f</i>	<i>W</i>
	<i>Leambkin David Henry.</i>	<i>N/2 4</i>	<i>R 1 S</i>	<i>m f</i>	<i>5- W</i>
	<i>Streib Andrew</i>	<i>pt 1</i>	<i>R 1 S</i>	<i>m f</i>	<i>5- W</i>
	<i>Vanelake Jacob.</i>	<i>pt N/2 2</i>	<i>R 1 S</i>	<i>m f</i>	<i>5- W</i>
	<i>Hellman Joseph.</i>	<i>pt 1</i>	<i>R 1 S</i>	<i>m f</i>	<i>5- W</i>
	<i>Walker William S.</i>	<i>pt 11</i>	<i>R 1 N</i>	<i>m f</i>	<i>6 W</i>
	<i>Williams Thomas W</i>	<i>1</i>	<i>Melbourne</i>	<i>m f</i>	<i>5- W</i>
	<i>Williamson Charles</i>	<i>1</i>	<i>Melbourne</i>	<i>m f</i>	<i>5- W</i>

Polling Sub-Division No. 3,

Comprising all that portion of the Township lying in the 1st and 2nd Concessions
East of the Side Road between Lots 12 and 13.

PART 1.—Persons entitled to Vote at BOTH Municipal Elections and Elections to the Legislative Assembly.

Roll No.	NAME.	LOT.	Concession or Street.	Other Description.	P.O.
J 20	Abray, George	pt E hf 22	2	M F and T	1
J 26	Arnold, James	S pt E pt 16 & other pre.	2	M F and T	1
J 1119	Agnew, Robert	Blk H 10, p. 14 & 15	2 Mt Bgs	M F and O	1
1183	Almass, James	Blk G 1 and 2	2 Mt Bgs	M F and T	1
74	Baneroff, Wm G	pt N hf N hf 20	2	M F and O	2
J 104	Brown, Wm	E cor S hf 21	1	M F and O	3
J 105	Brown, David	E cor S hf 21	1	M F and T	3
J 110	Bell, John	E hf S hf 15	1	M F and O	1
J 111	Borley, Wm E	S hf 18, pt N hf 19	1 & R 1 N	M F and O	1
112	Borley, Ernest	S hf 18, pt N hf 19	1 & R 1 N	M F and F S	1
1120	Brownson, Saml C	27 to 31 and other pre	2, Mt Bgs	M F and O	1
1121	Bidnall, Wm	163 and 164	2, Mt Bgs	M F and T	1
J 1122	Broom, Thomas	313 to 319 & other pre.	2, Mt Bgs	M F and O	1
1123	Baker, Thomas	W Ad st pt 18	2, Mt Bgs	M F and O	1
J 1128	Baneroff, David	blk F, pt 1, 2, 3	2, Mt Bgs	M F and T	1
J 1130	Bignall, George	blk E, 17 and 18	2, Mt Bgs	M F and O	1
J 1133	Bartlett, Henry A	blk K, pt N hf 18	2, Mt Bgs	M F and T	1
1134	Bartlett, Benj F	blk C, 1, 17 pt 2	2, Mt Bgs	M F and O	1
1135	Betts, John	blk C, 16, pt 15	2, Mt Bgs	M F and O	1
1137	Bryden, Robert	blk B 18	2, Mt Bgs	M F and T	1
J 1138	Bolton, Alfred	blk C, 13, 14, pt 12	2, Mt Bgs	M F and O	1
1125	Bidnall, Wm	blk G, 18	2, Mt Bgs	M F and T	1
238	Cade, Robert	N hf 19, pt S hf 19	1	M F and O	1
J 243	Clark, Pearson	pts S hf 21, 22	1 and 2	M F and O	1
244	Clark, Edward	pts S hf 21, 22	1 and 2	M F and F S	1
J 248	Coy, John	pt N hf 21 & other prem.	1 & R 1 N	M F and O	1
J 288	Cartner, Robert	W hf S hf 18	2	M F and O	1
1140	Crozier, John	blk H, pt 18 & other pr.	2, Mt Bgs	M F and O	1
1141	Crozier, George	blk H, pt 18 & other pre.	2, Mt Bgs	M F and T	1
1144	Crooks, William	23 to 26 and other pre.	2, Mt Bgs	M F and O	1
306	Dunn, Wm sr	E pt 24	2	M F and O	10
J 307	Dunn, Wm jr	E pt 24	2	M F and T	10

Roll
No.
310
311
312

J1146

1151

J 402
J1147
J1152
J1156
J1157
1158
1161
1162
J1154

461
462
476
1166
1167
1168
1170

J 500
1173
1174
1176

J 527
1177
1178
1179

555
J 564
1291
1180
1181
J1184
1185
1186

Roll No.	NAME.	LOT.	Concession or Street.	Other Description.	P.O.
310	Dawson, Joseph	N hf 13	1	M F and O	1
311	Dawson, Vickers	N hf 13	1	M F and F S	1
312	Dawson, Josh J H	N hf 13	1	M F and F S	1
J1146	Elsey, James	blk H, 17	2, Mt Bgs	M F and T	1
1151	Fisher, John J	blk H, pt 14 and 15	2, Mt Bgs	M F and O	1
J 402	Graves, Angus	Cen pt W hf 22	2	M F and O	1
J1147	Graves, Benjamin	blk H, 17	2, Mt Bgs	M F and T	1
J1152	Gillam, Hiram	pt S ½ 18 & other prem.	2, Mt Bgs	M F and O	1
J1156	Gamble, James	N cor 18, pt W hf 17	2	M F and O	1
J1157	Gamble, Alva	blk B, 3 & other prem.	2, Mt Bgs	M F and O	1
1158	Grigg, John	blk K, 16	2, Mt Bgs	M F and O	1
1161	Graves, Wm J	171 and 107	2, Mt Bgs	M F and O	1
1162	Graves, Albert	171 and 107	2, Mt Bgs	M F and T	1
J1154	Graves, Benj	blk C, pt 1 and 2	2, Mt Bgs	M F and T	1
461	Heath, Thomas	cen pt 21	1	M F and O	1
462	Heath, Robert	cen pt 21	1	M F and F S	1
J 476	Heath, Francis	N hf N hf 21	2	M F and O	1
1166	Healey, James	131 to 145	2, Mt Bgs	M F and O	1
1167	Hadden, Joseph sr.	E pt N hf 18	2	M F and O	1
1168	Hadden, Joseph jr.	E pt N hf 18	2	M F and O	1
1170	Haney, Thomas	Blk C, pts 8, 9, 10	2, Mt Bgs	M F and T	1
J 500	Innis, Hugh	E hf 22	1	M F and O	3
1173	Johnson, Robert	80, 81, pt 57, 58	2, Mt Bgs	M F and O	1
1174	Johnson, Hiram	55, 56, 82, 83	2, Mt Bgs	M F and O	1
1176	Johnston, Samuel	175, 176, 177	2, Mt Bgs	M F and T	1
J 527	Kilbourn, Benjamin	N hf 14	1	M F and T	1
1177	Kellestine, Andrew	1 to 6 & 75, 63 to 73	2, Mt Bgs	M F and O	1
1178	Kellog, Andrew	Blk E, 12	2, Mt Bgs	M F and O	1
1179	Kinch, Peter	Blk B, 10	2, Mt Bgs	M F and O	1
555	Lipsit, Jasper	N cor N hf 16	2	M F and O	1
J 564	Lowthian, George	S hf 14, pt 21	1 & R 2 S	M F and O	6
1291	Lidgett, Charles	179 and 180	2, Mt Bgs	M F and T	1
1180	Lee, Elijah	182, 183, 184	2, Mt Bgs	M F and O	1
1181	London, Franklin F.	206 to 212 & other pre.	2, Mt Bgs	M F and O	1
J1184	Lloyd, Fergus	pt N hf 18	2	M F and O	1
1185	Luce, Seth	Blk G, 18, Blk H, 16	2, Mt Bgs	M F and O	1
1186	Lipsit, Bannon	Blk B 1, pt 2	2, Mt Bgs	M F and O	1

Roll No.	NAME.	LOT.	Concession or Street.	Other Description.	P.O.
J 577	Monteith, Wm	W hf 24	2	M F and O	1
J1196	Malcolm, M	Blk K, 1 and 2	2, Mt Bgs	M F and T	1
675	McCallum, Charles	N hf 13	2	M F and O	1
676	McCallum, Justus	N hf 13	2	M F and F S	1
J 689	McMullen, George	W hf N hf 20	1	M F and O	1
1127	McFee, Roderick	Blk F, pt 1, 2, 3	2, Mt Bgs	M F and T	1
J 716	Nagle, Henry	N hf 14	2	M F and O	1
734	Owens, Thomas	N W 1/4 N hf 16	2	M F and O	1
J 735	Obrine, John	E hf S hf 15	2	M F and O	1
736	Ollett, Wm	N pt S hf 21	2	M F and O	1
J 737	Ollett, Edward	S hf 20	2	M F and O	1
1194	Pierce, Thomas	Blk K, 1, 2	2, Mt Bgs	M F and O	1
1202	Porter, William	132 to 146, & other pre	2, Mt Bgs	M F and T	1
1203	Porter, James	119, 120, 121	2, Mt Bgs	M F and O	1
J 840	Ringrose, Charles	W 1/2 S hf 14, W 1/2 S 1/2 15	2	M F and T	1
J 842	Ramsay, Peter	W hf N hf 17	1	M F and O	1
844	Robinson, Thomas	S hf 13	1	M F and O	6
J 845	Robinson, Joseph	S hf 13	1	M F and T	6
1206	Robertson, Wm C.	Blk I, 15	2, Mt Bgs	M F and O	1
J1195	Robinson, Joseph	Blk K, 1, 2	2, Mt Bgs	M F and T	1
J 915	Smith, Charles	S pt N hf 21	2	M F and T	1
937	Stover, Jacob	W hf S hf 13	2	M F and O	1
938	Smith, Francis	E hf S hf 13	2	M F and O	1
J 939	Stratton, Alfred H.	E hf S hf 14	2	M F and O	1
J 940	Steer, John	E hf N hf 17	1	M F and O	1
J 960	Simpson, George	N hf 16	1	M F and O	1
961	Simpson, Wilbert	N hf 16	1	M F and F S	1
1208	Schultz, Andrew	Blk A, 1	2, Mt Bgs	M F and T	1
J1209	Small, David	E pt N hf 18	2	M F and O	1
1210	Small, David M	N hf N hf 19	2	M F and T	1
J1153	Sutherland, Jas F.	Blk pt 1 & other prem	2, Mt Bgs	M F and O	1
1160	Silcox, John W.	171, 107	2, Mt Bgs	M F and O	1
J 977	Tilden, George B	S pt 23	2	M F and O	1
J 978	Tilden, Chas N D.	N pt 23	2	M F and O	1
979	Tilden, Stephen E.	N pt 23	2	M F and F S	1

Roll No.

980

992

993

J 994

1288

J1001

J1211

1213

1215

J1217

J 841

J1041

1124

J 1015

J1079

J1083

J1084

1088

1089

J1090

1091

J1092

1093

1222

1223

J1224

1225

1131

P

1136

1214

1169

1221

1216

25

245

1207

240

242

1155

1126

1172

Roll No.	NAME.	LOT.	Concession or Street.	Other Description.	P.O.
980	Tilden, Charles	N pt 23	2	M F and F S	1
992	Tull, Robert	S hf 16, & other prem.	1	M F and O	1
993	Tull, Robert M.	S hf 16, & other prem.	1	M F and F S	1
J 994	Tull, Samuel R.	N hf 15	1	M F and O	1
1288	Tupholme, Robert	pt S ₂ 17 & 18	1	M F and O	1
J1001	Toles, Francis B.	W hf S hf 17	1	M F and T	1
J1211	Taggart, Thomas	167, and other prem.	2, Mt Bgs	M F and O	1
1213	Thomas, Stephen	168	2, Mt Bgs	M F and O	1
1215	Thompson, Lorenzo	Blk E, 13, 16, K 17	2, Mt Bgs	M F and T	1
J1217	Thomas, A W	Blk H, 1, 2, 3, pt 18	2, Mt Bgs	M F and T	1
J 841	Thomas, John	N W hf N hf 17	1	M F and O	1
J1041	Thomas, Albert E.	N hf N hf 20	2	M F and O	1
1124	Tupper, Martin	Blk G, 18	2, Mt Bgs	M F and T	1

J 1015 Vennor, Wm N hf N hf 20 2 M F and T 1

J1079	Waters, Francis	pt N hf 22 & other pre	2	M F and O	1
J1083	Weekes, John	23 and 24	1	M F and O	1
J1084	Weekes, James	23 and 24	1	M F and O	1
1088	Walker, George	E hf S hf 19	2	M F and O	1
1089	Walker, Alfred	E hf S hf 19	2	M F and F S	1
J1090	Waters, John W	E hf N hf 21	1	M F and O	1
1091	Waters, Cornelius	E hf N hf 21	1	M F and O	1
J1092	Waters, Arthur	W hf 22	1	M F and O	3
1093	Webb, Arthur	S hf S hf 20	1	M F and O	1
1222	Wells, M C	108, 109 & other prem.	2, Mt Bgs	M F and T	1
1223	Wilkinson, James	179, 180	2, Mt Bgs	M F and O	1
J1224	Wooten, Richard	blk F, 18 & other prem.	2, Mt Bgs	M F and O	1
1225	West, Thomas	blk F, pt 1, 2, 3	2, Mt Bgs	M F and O	1
1131	Whitehead, Zenes	blk E, 18	2, Mt Bgs	M F and T	1

PART II.—Persons entitled to Vote at Municipal Elections ONLY.

1136	Andrews, Ann	blk B, 18	2, Mt Bgs	O	1
1214	Arnold, John	blk E, 13, 16, B K 17	2, Mt Bgs	O	14
1119	<i>Agnew Robert. Blk # 16. pt 14 + 15</i>		<i>2 mt 1390</i>	<i>0</i>	<i>1</i>
1169	Bond, John	blk C, pt 8, 9, 10	2, Mt Bgs	O	2
1221	Bond, Jane	108, 109 & other prem.	2, Mt Bgs	O	1
1216	Bodman, Richard	blk H, 1, 2, 3	2, Mt Bgs	O	1
25	Cullen, Michael	S pt E pt 16	2	O	12
245	Corcoran, Eliza	pt N hf 21, 22	1	O	1
1207	Clay, Sarah A	blk A, 1	2, Mt Bgs	O	1
240	Coomrod, David	N E pt 16	2	O	17
242	Finch, Wm	S W pt S hf 22	1	O	18
1155	Gillam, Lucy	Sub 74, E 14 and 15	2, Mt Bgs	O	1
1126	Graham, George	blk F, 1, 2, 3	2, Mt Bgs	O	2
1172	Johnston, Alex	block I, 16	2, Mt Bgs	O	2

Roll No.	NAME.	LOT.	Concession or Street.	Other Description.	P.O.
1145	Kennedy, Angus	blk H, 17	2, Mt Bgs	O	19
1191	Mills, Charles J	blk I, 1	2, Mt Bgs	O	14
1171	McKellar, Elizabeth	blk C, pt 8, 9, 10	2, Mt Bgs	T	1
718	Neville, Pamela	S hf 17	2	O	1
1200	Nagle, Rebecca	155, 156, 157	2, Mt Bgs	O	1
1199	Nicholson, Henry	pt N hf 17 & other prem	2	O	2
1201	Porter, Eliza	132 to 146	2, Mt Bgs	O	1
1175	Rowles, Wm	175, 176, 177	2, Mt Bgs	O	20
21	Smith, David	pt E hf 22	2	O	14
1132	Tuck, Eliza	blk I, 17, 18	2, Mt Bgs	O	1

PART III.—Persons entitled to Vote at Elections to the Legislative Assembly ONLY.

1129	Bancroft, John	S W pt 18	2	M F	1
	<i>Bancroft David & Braddon James Henry</i>	<i>12th & Mt 1392</i>	<i>2</i>	<i>M F</i>	<i>1</i>
241	Corcoran, Dennis	pt S hf 21	2	M F	1
1304	Caves, Joseph	pt I, Blk K	2, Mt Bgs	M F	1
1142	Clay, Henry	Blk I, 1	2, Mt Bgs	M F	1
1290	George, Edward N.	T R agent	2, Mt Bgs	M F	1
	<i>Lee Joseph</i>	<i>12th & 154</i>	<i>2 Mt 1392</i>	<i>M F</i>	<i>1</i>
458	Humphrey, Alex	S W pt S hf 22	1	M F	1
459	Humphrey, Edward	S W pt S hf 22	1	M F	1
1295	Howerth, W E	Blk K, pt 1	2, Mt Bgs	M F	1
	<i>Irish Maylon</i>	<i>1</i>	<i>2 Mt 1392</i>	<i>M F</i>	<i>1</i>
579	Misner, Andrew	N hf 15	1	M F	1
1198	McCallum, Arch	Blk F, pt 1, 2, 3	2, Mt Bgs	M F	1
794	Patrick, Josiah	W hf 24	2	M F	1
1296	Root, Richard	Blk K, pt 1	2, Mt Bgs	M F	1
1302	Richardson, Lewis	Blk K, pt 1	2, Mt Bgs	M F	1
1212	Taggart, Frederick	165, 166	2, Mt Bgs	M F	1
1220	Vrooman, James	Blk B, 6	2, Mt Bgs	M F	1
	<i>Kennor William</i>		<i>Mt 1392</i>	<i>M F</i>	<i>1</i>
	<i>Walker Charles H</i>	<i>pt 19</i>	<i>2</i>	<i>M F</i>	<i>1</i>

Compr
PA
Roll No.
J 8
J 9
J 22
J 24
J 61
J 62
J 75
J 76
J 78
J 81
J 82
J 92
J 93
J 94
J 99
J 100
J 101
J 102
103
104
J 200
J 203
J 204
J 217
J 219
J 221
J 231
J 258
J 259
J 216
J 228
334
345
348

Polling Sub-Division No. 4,

Comprising all that portion of the Township lying in the 2nd, 3rd, 4th, 5th, and 6th Concessions West of the Side Road between Lots 12 and 13.

PART 1.—Persons entitled to Vote at BOTH Municipal Elections and Elections to the Legislative Assembly.

Roll No.	NAME.	LOT.	Concession or Street.	Other Description.	P.O.
J 8	Anstey, John	W hf N hf 3	5	M F and O	7
J 9	Addison, William	E hf S hf 9	6	M F and O	2
J 22	Angerman, John	S hf 6	3	M F and O	12
J 24	Atkinson, Francis	S pt 1	2	M F and O	12
J 61	Blair, William	N hf 9	6	M F and T	2
J 62	Blair, Geo D	N hf 9	6	M F and T	2
J 75	Bairns, Thomas	N hf 4	6	M F and O	7
J 76	Bairns, Michael	N hf 4	6	M F and O	7
J 78	Ballantine, George	N hf 10	5	M F and O	2
J 81	Brown, Edmund	N hf 7, W hf S hf 5	3 and 4	M F & T & O	12
J 92	Bass, Albert	E hf S hf 5	4	M F and T	12
J 93	Bateman, Elisha	S hf 9	3	M F and O	1
J 94	Bowley, Henry	W hf S hf 10, S hf 9	3	M F & O & T	1
J 99	Branton, Alfred	E hf S hf 4	3	M F and O	12
J 100	Bateman, Chas E	S hf 4	2	M F and O	12
J 101	Bateman, Samuel	W hf S hf 5	2	M F and O	12
J 102	Beattie, James	S hf 6, pt N hf 6	2	M F and O	12
103	Beattie, Patten	S hf 6, pt N hf 6	2	M F and F S	12
104	Beattie, James J	S hf 6, pt N hf 6	2	M F and F S	12
J 200	Connor, James	W hf N hf 6	5	M F and O	7
J 203	Campbell, Arch	W hf N hf 12	5	M F and T	2
J 204	Campbell, Dugald	E hf N hf 12	5	M F and O	2
J 217	Coleman, James	E cor N hf 12	2	M F and T	1
J 219	Cushman, James	E pt S hf 3	3	M F and O	12
J 221	Cavan, Charles	S hf 1	3	M F and T	12
J 231	Carruthers, John	E $\frac{1}{2}$ S $\frac{1}{2}$ 9, W hf S $\frac{1}{2}$ 9	2	M F & O & T	12
J 258	Cobban, Daniel	S hf 3	4	M F and O	7
J 259	Cobban, James	N hf 3	4	M F and O	7
J 216	Campbell, Wm J	E cor N hf 12	2	M F and O	2
J 228	Cawthrope, Ernest	S hf 2	2	M F and O	12
334	Ferguson, Sannel	E pt N hf 11	6	M F and O	2
J 345	Ferguson, John	E pt N hf 11	6	M F and T	2
348	Fisher, Clement	S hf 8	6	M F and O	7

Roll No.	NAME.	LOT.	Concession or Street.	Other Description.	P.O.
J 349	Fisher, John	W hf N hf 8	6	M F and O	7
350	Fisher, Wellington	S hf 8	6	M F and F S	7
351	Fisher, William	S hf 8	6	M F and F S	7
J 352	Fisher, Benjamin	N W pt 8	5	M F and O	7
J 355	Farrow, John	W hf 9 & other prem	5	M F and T	2
J 356	Farrow, Wm	W hf 9 and other prem	5	M F and T	2
380	Fox, George	N E cor N hf 12	6	M F and T	2
382	Francis, Robert H	W hf S hf 11	3	M F and O	1
J 404	Grigg, John P	N hf 11, N hf 4	4	M F and O	1
406	Grigg, Wm	W $\frac{1}{2}$ N $\frac{1}{2}$ 12 & other pre	2	M F and O	1
J 407	Grigg, Frank	W $\frac{1}{2}$ N $\frac{1}{2}$ 12 & other pre	2	M F and O	1
J 409	Graves, Hanson	W hf S hf 3	3	M F and T	12
J 412	Grigg, Wm H	E hf S hf 11	3	M F and O	1
408	Hanmit, James	W hf S hf 3	3	M F and O	12
438	Howe, Hamilton	S hf 1	6	M F and O	7
J 439	Howe, Thomas	S hf 1	6	M F and O	7
J 440	Hixon, Levi J	S hf 4, E hf S hf 3	6	M F and O	7
441	Hixon, Francis G	S hf 4, E hf S hf 3	6	M F and F S	7
J 442	Howe, George	N hf 5	5	M F and O	7
J 444	Hutton, Alex B	W hf S hf 9, E $\frac{1}{2}$ N $\frac{1}{2}$ 8	6	M F and O	2
J 446	Hutton, James L	E hf S hf 9, pt 10	5	M F and O	2
J 447	Hunter, George	E hf N hf 9	4	M F and O	2
J 448	Hardy, Henry	S hf 7	5	M F and O	2
J 449	Hixon, John	E hf S hf 5	5	M F and O	7
J 451	Harrison, Willoughby	S hf 6	4	M F and O	7
J 452	Hutcheson, John	pt W hf N hf 8	3	M F and O	1
456	Hutcheson, James	E hf N hf 6	4	M F and O	7
J 457	Hutcheson, George	N hf 1	4	M F and O	7
J 460	Hoover, Joseph	W pt 10	2	M F and O	1
J 91	Harrison, Robert	E hf S hf 5	4	M F and O	12
J 437	Howe, Joseph	N hf 1	6	M F and O	13
J 494	Inches, George	N hf 5	3	M F and O	12
J 495	Inches, John	W hf S hf 10	4	M F and O	1
J 496	Inches, Thomas	E hf S hf 10	4	M F and O	1
497	Inches, James	E hf S hf 10	4	M F and F S	1
J 515	Kellestine, Warren	W hf N hf 2	4	M F and O	12
J 517	Kellestine, John	W hf N hf 2	3	M F and T	12
518	Kellestine, Wm	W hf N hf 2	3	M F and F S	12
519	Kellestine, Thomas	W hf N hf 2	3	M F and F S	12
520	Kellestine, Geo sr	11, 12, 13, 15, Mid	2	M F and O	12
J 547	Langford, James A	cen pt S hf 10	5	M F and O	1
J 548	Lee, John	N hf 5	4	M F and O	7

Roll No.

J 631

J 661

662

668

J 665

J 666

J 669

J 671

J 672

680

681

682

683

J 684

82

J 688

717

783

741

742

J 765

J 768

J 771

772

773

774

J 775

J 776

J 780

J 781

J 782

J 784

J 785

J 786

J 787

J 790

810

823

827

J 828

J 829

830

831

J 832

R

Roll No.	NAME.	LOT.	Concession or Street.	Other Description.	P.O.
J 631	McArthur, Donald	N hf 10	6	M F and O	2
J 661	McDougall, Duncan	S hf 10, S hf 11	6	M F and O	2
662	McDougall, Arch	S hf 10, S hf 11	6	M F and F S	2
668	McDougall, Arch	W hf S hf 12	6	M F and F S	2
J 665	McLean, Charles	N hf 11	5	M F and O	2
J 666	McLean, Hector	S hf 12	5	M F and O	2
J 669	McDougall, Peter	E hf S hf 12	6	M F and O	2
J 671	McPhail, Arch	N hf 10	4	M F and O	2
J 672	McKellar, Duncan	W hf S hf 2	5	M F and T	12
680	McGregor, James sr	S hf 7, & other prem	3	M F and O	12
681	McGregor, John	S hf 7, & other prem	3	M F and F S	12
682	McGregor, James jr	S hf 7, & other prem	3	M F and F S	12
683	McGregor, Thomas	S hf 7, & other prem	3	M F and O	12
J 684	McCracken, James	E 1/2 S hf 5, & other pre	2	M F and O	12
82	McMullen, Thomas	N 1/2 7, & other prem	3	M F and O	1
J 688	McMullen, John	8	2	M F and T	1
717	Nichols, Daniel	6 and 7 Middleton	2	M F and O	12
783	Nichols, Wm	E hf N hf 3	5	M F and O	7
741	Oaks, Samuel sr	pt N hf 12	6	M F and O	2
742	Oaks, Samuel jr	pt N hf 12	6	M F and T	2
J 765	Pettit, Francis	W hf N hf 3	6	M F and O	7
J 768	Patterson, Thomas	N W cor N hf 1	5	M F and O	12
J 771	Pettit, Levi	pt N hf 2 & 3, S hf 4	6 & 7	M F and O T	7
772	Pierce, Robert	W cor S 1/2 8, & other pre	5	M F and O	7
773	Pierce, Francis	W cor S 1/2 8, & other pre	5	M F and F S	7
774	Pierce, Thomas	W cor S 1/2 8, & other pre	5	M F and F S	7
J 775	Pierce, Uriah	N hf S hf 4	5	M F and O	7
J 776	Pettit, Martin	E hf S hf 3	5	M F and O	7
J 780	Pierde, Robert jr	pt N hf 1	5	M F and O	7
J 781	Phillips, James	pt 2	6	M F and O	7
J 782	Paisley, Wm	W hf S hf 3, S hf S 1/2 5	6	M F and O	7
J 784	Paisley, Samuel	E hf N hf 3	5	M F and T	7
J 785	Pullen, Noah	E hf N hf 6	5	M F and O	7
J 786	Pullen, Joseph	S hf 7, pt 6	6	M F and O	7
J 787	Pullen, John	N hf S hf 5	6	M F and O	7
J 790	Parker, Charles B.	E hf S hf 11	4	M F and O	1
810	Pratt, John	17 and 18 Middleton	2	M F and O	12
825	Ramey, James	E pt N hf 2	5	M F and O	7
827	Ramey, Thomas	E pt N hf 2	5	M F and F S	7
J 828	Ramey, Wm	W pt N hf 2	5	M F and O	7
J 829	Richardson, John	E hf S hf 11	5	M F and O	2
830	Rice, John	E hf S hf 2, pt 3	5	M F and O	12
831	Rice, James	E pt N hf 3	5	M F and O	7
J 832	Ramsay, George	N hf 10	3	M F and O	1

Roll No.	NAME.	LOT.	Concession or Street.	Other Description.	P.O.
836	Robinson, John	S hf 5	3	M F and O	12
J 838	Rae, Alex	N pt 3	2	M F and O	12
J 879	Snelgrove David	E pt N hf 11	6	M F and T	2
J 885	Stephenson, Alfred	N hf 4, N hf 7	5 and 6	M F and O	7
J 886	Stephenson, Robert	N hf 4, N hf 7	5 and 6	M F and O	7
J 895	Sutherland, George	N pt N hf 8	4	M F and O	6
J 896	Sutherland, John	E hf N hf 7, pt 1	4	M F and O	2
J 897	Stuart, John	W hf N hf 6	4	M F and O	7
J 899	Sutherland, Isaac	W hf S hf 7	4	M F and O	1
J 900	Sutherland, Thomas	E hf S hf 7	4	M F and O	1
J 901	Sutherland, Henry	W hf S hf 8	4	M F and O	1
J 902	Sutherland, Wm	E hf S hf 8	4	M F and O	1
903	Sutherland, Alex sr.	S hf 9, pt 8	4	M F and O	1
J 904	Sutherland, Alex jr.	S hf 9, pt 8	4	M F and O	1
J 905	Sutherland, James J.	N hf 9 and other prem.	3	M F and O	1
J 906	Sutherland, Charles	W 1/2 N 1/2 7 & other prem.	4 and 3	M F and O	1
J 907	Scott, William	N hf 12	3	M F and O	1
908	Scott, Robert	N hf 12	3	M F and F S	1
918	Steer, Stephen	S hf 12	3	M F and O	1
919	Steer, Walter	S hf 12	3	M F and F S	1
J 923	Small, Wm	E hf S hf 10	3	M F and O	1
J 925	Sleath, Wm	E hf N hf 2	3	M F and T	12
J 926	Stuart, Stephen	W hf S hf 2	3	M F and O	12
J 927	Stoekings, Christopher	N pt N hf 2, pt 2	2 and 3	M F and O	12
928	Seaburn, John	S hf 3	2	M F and O	12
J 931	Simmons, Moses	S hf 7	2	M F and O	12
J 972	Toal, Wm	N hf 7	5	M F and O	2
J 982	Trott, Wm	N hf 9	2	M F and O	1
985	Thompson, John	S pt 11	2	M F and O	1
987	Thompson, Francis	pt S hf 11 and 12	2	M F and O	1
1040	Westbrook, Leonard	pt blk 1, Middleton	2	M F and O	12
J1059	Wakem, John	E hf N hf 3	6	M F and O	7
J1061	Wittaker, Joseph	W hf S hf 6	6	M F and O	7
J1062	Wats'n, Walter W.	E hf N hf 9	5	M F and O	2
J1066	Welsh, Lyman	pt S hf 10, pt S hf 11	5	M F and O	2
J1068	Wightman, James	S hf 6	5	M F and T	7
J1069	Wightman, David	S hf 6	5	M F and T	7
J1070	Wightman, Hamilton	S hf 6	5	M F and T	7
J1072	Watson, Joseph	N hf 6	3	M F and O	12
1073	Wilcock, Thomas	N hf 11	3	M F and O	1
J1086	White, James	N pt N hf 6	2	M F and O	12
J1087	White, Ralph	N pt N hf 6	2	M F and T	12
J1114	Wakem, Thomas	N hf 6	6	M F and O	7
222	Windall, James	W 1/2 S hf 1	3	M F and O	12
PART II.—Persons entitled to Vote at Municipal Elections ONLY.					
60	Blair, Elizabeth	N hf 9, pt 10	6 & 7	O	2
96	Bolton, Barbara	W hf S hf 4	3	O	12
220	Berdan, John	E pt S hf 1	3	O	2

POLLING SUB-DIVISION No. 4.

P.O.	Roll No.	NAME	LOT	Concession or Street.	Other Description.	P.O.
O.....12	202	Campbell, Janett	W hf N hf 12	5	O	2
O.....12	308	Dillan, John	N hf 1	3	O	12
T.....2	309	Dillan, Thomas	N hf 1	3	O	12
O.....7	878	Elson, John	E pt N hf 11	6	O	25
O.....6	354	Farrow, Robert	W hf 9, & other prem	5	O	2
O.....2	1067	Hixon, Josepa	S hf 6	5	O	7
O.....7	237	Lucas, Mrs	N cor N hf 12	2	O	1
O.....1	578	Moore, Martha	1 to 9, H st Midd	2	O	12
O.....1	664	McLean, Nancy	N hf 11	5	O	2
O.....1	667	McDongall, Jane	W hf S hf 12	6	O	2
O.....1	659	McKee, James	S hf 1, & other prem	5	O	12
O.....1	660	McKee, John D	S hf 1, & other prem	5	O	12
F S.....1	1071	McEwen, Robert	N hf 6	3	O	18
O.....1	788	Pairick, Jane	E pt N hf 8	3	O	12
O.....1	789	Parker, Martha	W hf S hf 11	4	O	1
O.....12	177	Raymond, John	N hf 12	4	O	2
O.....12	887	Smale, Henry	W hf S hf 6	6	O	7
O.....12	898	Simmons, George	E hf S hf 4	4	O	26
O.....12	516	Thomas, David	W hf N hf 2	3	O	14
O.....12	1110	Weld, Agnes	W pt N hf 1	2	O	3

PART III.—Persons entitled to Vote at Elections to the Legislative Assembly ONLY.

nd O.....12	23	Augerman, Charles	S hf 6	3	M F	12
nd O.....7	86	Bolton, Hugh	S hf 12	4	M F	1
nd O.....7	197	Cranston, Wm	N hf 6	6	M F	2
nd O.....2	229	Cushman, Wm	S pt N hf 4	2	M F	12
nd T.....7	354	Fenwick, John	E hf N hf 9	4	M F	12
nd T.....7	403	<i>Fairservice John</i> Glennie, George	pt W hf S hf 3	5	<i>M F</i>	2
nd O.....1	450	<i>Grigg Arthur</i> Hare, Justin	<i>Rt 12</i> S hf 6	2	<i>M F</i>	7
nd O.....12	450	<i>Henson Alfred B</i> Kellestine, John jr.	1 11, 12, 13, 15 Midd	2	<i>M F</i>	12
nd T.....12	521	Kellestine, Geo jr.	11, 12, 13, 15 Midd	2	M F	12
nd O.....7	522	<i>Mercer Isaac</i> McDongall, Arch	<i>S 1/2 Y</i> S hf 10	3	<i>M F</i>	2
nd O.....12	663	McDongall, Arch	S hf 10	6	M F	2
ONLY.....2	876	Seymour, Thomas	W hf N hf 3	6	M F	2
.....12		<i>Scott Alexander</i>			<i>M F</i>	1

Polling Sub-Division No. 5,

Comprising all that portion of the Township lying in the 6th, 7th, 8th, 9th and 10th Concessions East of the Side Road between Lots 12 and 13.

PART 1.—Persons entitled to Vote at BOTH Municipal Elections and Elections to the Legislative Assembly.

Roll No.	NAME.	LOT.	Concession or Street.	Other Description.	P.O.
J 1	Anderson, John	pt N hf 14	9	M F and O.	2
J 36	Buttery, John	S W cor N hf 13	9	M F and O.	2
J 37	Bond, Frederick	N pt N hf 17	10	M F and O.	2
J 38	Bond, Samuel	N hf 16	9	M F and O.	2
J 40	Brooks, Hugh	S hf 21, S hf 22	10	M F and O.	9
J 50	Ball, Thomas sr	W pt S hf 20	9	M F and O.	2
J 51	Ball, Robert T	W pt S hf 20	9	M F and F S.	2
J 53	Bell, Richard	pt S hf 20, S hf 20	7 & 8	M F and O.	2
J 54	Bell, Robert W	pt S hf 20, S hf 20	7 & 8	M F and F S.	2
J 55	Bell, James S	pt S hf 20, S hf 20	7 & 8	M F and F S.	2
J 56	Bell, John C	pt S hf 20, S hf 20	7 & 8	M F and F S.	2
J 57	Brown, Wm	E $\frac{1}{2}$ N $\frac{1}{2}$ 13, & other pre.	7 & 8	M F and O.	2
J 58	Brown, Geo W	E $\frac{1}{2}$ N $\frac{1}{2}$ 13, & other pre.	7 & 8	M F and F S.	2
J 59	Brown, Henry S	W $\frac{1}{2}$ N $\frac{1}{2}$ 13, & other pre.	7	M F and O.	2
J 70	Brown, Henry	W $\frac{1}{2}$ S $\frac{1}{2}$ 18, & other pre.	6	M F and O.	2
J 71	Brown, James H	W $\frac{1}{2}$ S $\frac{1}{2}$ 18, & other pre.	6	M F and F S.	2
J 73	Branton, Thomas	E $\frac{1}{2}$ N $\frac{1}{2}$ 14, pt S hf 20	6 & 7	M F and O & T.	2
J 144	Collins, Wm G	N hf S hf 13 & 14	9	M F and T.	2
J 145	Collins, Thos S	N hf S hf 13 & 14	9	M F and T.	2
J 146	Campbell, Malcolm	pt 17, N hf 16	9 & 10	M F and O.	2
J 147	Campbell, Charles	S hf 16	10	M F and O.	2
J 148	Campbell, Mal M	W hf 23	10	M F and O.	9
J 149	Campbell, Arch J	W hf 23	10	M F and T.	9
J 150	Campbell, Peter T	W hf 23	10	M F and T.	9
J 151	Campbell, Donald	19	10	M F and O.	2
J 152	Campbell, John K	19	10	M F and F S.	2
J 153	Campbell, Alex K	19	10	M F and F S.	2
J 154	Campbell, Alex C	S E pt 18	10	M F and O.	2
J 155	Campbell, John C	S E pt 18	10	M F and F S.	2
J 169	Collins, Thomas	S W cor 13, & other pre.	8 & 9	M F and O.	2
J 170	Collins, Wm A	pt S hf 13 & 14	9	M F and T.	2
J 172	Crawford, Arch	S hf 19	9	M F and O.	2
J 176	Collins, George	N hf 14, & other prem.	7	M F and O.	2
J 182	Campbell, Arch	21 & other premises	8 & 9	M F and O.	2
J 183	Crawford, Duncan	S hf 17	8	M F and O.	2
J 188	Carson, Samuel	S hf 19	6	M F and O.	1

Roll No.	NAME.	LOT.	Concession or Street.	Other Description.	P.O.
190	Campbell, Malcolm	S hf 22, pt 23	6	M F and O	10
J 191	Campbell, Arch R	S hf 22, pt 23	6	M F and T	10
J 192	Campbell, Mal J	pt S hf 23	6	M F and O	10
J 195	Campbell, Arch M	N hf 24	6	M F and O	10
J 196	Campbell, Alex	W hf N hf 21	6	M F and O	2
J 201	Courtis, Robt B	pt S hf 14	6	M F and O	2
J 208	Case, Peter	E pt 13	6	M F and O	2
J 294	Degraw, John G	pt S hf 16	9	M F and O	2
J 295	Degraw, John	W pt N hf 16	8	M F and O	2
J 297	Dolphin, Neil	pt N hf S hf 16	9	M F and T	2
298	Dolphin, Alex	S E cor S hf 20	9	M F and O	2
300	Dolphin, James	N hf 23	8	M F and T	2
206	Degraw, Cornelius	E pt S hf 15	0	M F and O	2
J 325	Elworthy, Richard	N hf 23, N hf 24	9	M F and O	9
J 327	Esikine, Thomas	N hf N hf 16	6	M F and O	2
J 1022	Elworthy, John P	N hf 24	10	M F and O	9
J 343	Frank, Lucian	pt E hf S hf 20	9	M F and T	2
J 347	Fletcher, Neil	S hf 21	6	M F and O	10
J 383	Graham, Donald G	E hf 23, S hf 24	10	M F and O	9
J 392	Graham, Hugh	E hf S hf 15	8	M F and T	2
J 422	Getty, Uriah	W hf N hf 15, pt 16	6	M F and O	2
J 423	Getty, John F	W hf N hf 15, pt 16	6	M F and T	2
J 424	Getty, Edwin	W hf N hf 15, pt 16	6	M F and T	2
J 426	Hill, John L	E pt N 1/2 16 & other pre	8	M F and O	2
J 429	Hansford, John W	S hf 22	8	M F and T	2
J 430	Humphrey, Thomas	N hf S hf 17	7	M F and O	2
J 431	Hill, James A	N hf 15 and other pre	7	M F and O	2
435	Henderson, George	N hf 19	6	M F and O	2
J 436	Henderson, John	N hf 19	6	M F and O	2
443	Howe, Wm	S cor 14 & other prem	6	M F and O	1
493	Harrison, David	E cor N 1/2 13	6	M F and O	2
J 505	James, David	N pt 13	9	M F and O	2
J 510	Jones, William	S hf S hf 17	7	M F and O	1
935	Leitch, Malcolm S	E hf S hf 14	7	M F and O	2
J 570	Leitch, Dugald sr	S hf 13 & other prem	7	M F and O	2
J 571	Leitch, Dugald jr	S hf 13 & other prem	7	M F and T	2

Roll No.	NAME.	LOT.	Concession or Street.	Other Description.	P.O.
586	Mitchell, John C . . .	W hf S hf 15	7	M F and O	2
J 587	Mitchell, James M . . .	W hf N hf 14	6	M F and O	2
596	McLean, Neil	N hf 21	9	M F and O	2
J 597	McLean, Hugh	N hf 21	9	M F and T	2
J 598	McLellan, Angus	S hf 20 & other prem . . .	10	M F and O	2
J 599	McLellan, Donald	S hf 20 and other prem . . .	10	M F and O	2
601	McLean, Allan sr	N hf 14	8	M F and O	2
J 602	McLean, Allan jr	N hf 14	8	M F and T	2
J 603	McLean, Arch	N hf 14	8	M F and T	2
604	McLean, Charles	N hf 14	8	M F and F S	2
J 606	McDonald, Charles	W pt S hf 15	9	M F and O	2
J 608	McLean, Charles	E pt S hf 18	9	M F and O	2
609	McLellan, Arch	pt W hf N hf 18	8	M F and O	2
J 610	McLean, Allan C	E hf 18	9	M F and O	2
611	McLellan, Nevin	N hf 19	8	M F and O	2
J 614	McKellar, Duncan	S hf 23, S hf 21	9	M F and O	9
J 615	McDongall, Alex C	24	8	M F and O	11
J 616	McGugan, Godfrey	N hf 23 and 21	7	M F and O	11
J 617	McGugan, Angus	22, N hf 18	7	M F and O	2
J 618	McGugan, Malcolm	22, N hf 18	7	M F and O	2
J 619	McGugan, John	22, N hf 18	7	M F and O	2
J 620	McGugan, Duncan	22, N hf 18	7	M F and O	2
J 621	McNeil, John	S hf 19, N hf 20	8 and 9	M F and O	2
622	McNeil, Donald T	N hf 19 & other prem . . .	7	M F and O	2
J 623	McNeil, Angus C	N hf 19 & other prem . . .	7	M F and O	2
J 624	McNeil, John C	N hf 19 and other pre . . .	7	M F and O	2
J 625	McNeil, Duncan C	N hf 19 and other pre . . .	7	M F and O	2
J 626	McNeil, Malcolm C	N hf 19 and other pre . . .	7	M F and O	2
J 627	McNeil, Arch C	N hf 19 and other pre . . .	7	M F and O	2
629	McMillan, James	W hf N hf 16	7	M F and F S	2
630	McMillan, David	W hf N hf 16	7	M F and O	11
J 652	McLean, Duncan L	N hf 24	7	M F and O	2
654	McGugan, Malcolm	S hf 23	7	M F and O	2
J 655	McPhail, Dngald	S hf 18	7	M F and O	2
J 656	McKellar, James	N hf 23, N hf 22	6	M F and O	2
657	McKellar, Duncan	N hf 23	6	M F and F S	2
658	McNeil Alex	S hf 19	7	M F and O	2
674	McIntyre, Arch	N cor N hf 18	6	M F and O	2
1055	McVicar, John	N hf 20	6	M F and O	2
1056	McVicar, Arch	N hf 20	6	M F and O	2
709	Northcott, Thomas	E hf S hf 17	6	M F and O	1
J 710	Northcott, Augustus	W $\frac{1}{2}$ S $\frac{1}{2}$ 17, & other pre . . .	6	M F and O	1
J 711	Northcott, Robert T	S hf N hf 17	6	M F and O	1
J 572	Perkins, John	S $\frac{1}{2}$ 13, & other prem	7	M F and T	6
J 72	Reily, Peter	E pt S hf 20	7	M F and O	2
819	Rose, Peter sr	S hf 16	7	M F and O	2

Roll No.	NAME.	LOT.	Concession or Street.	Other Description.	P.O.
820	Rose, Peter jr	S hf 16	7	M F and F S.	2
J 821	Rose, Alex	N hf 20	7	M F and O.	2
825	Root, Jeduthan	pt W hf N hf 18	6	M F and O.	2
1292	Root, Abner	pt W hf N hf 18	6	M F and F S.	2
J 872	Stanley, Jonah	E hf N hf 22	8	M F and O.	2
874	Sinclair, Duncan	S hf 23	8	M F and O.	11
J 875	Sinclair, Neil	S hf 23	8	M F and T.	11
J 884	Sinclair, Arch	S hf 24	7	M F and O.	11
J 889	Sabine, John	E hf S hf 15	6	M F and O.	2
J 890	Sabine, Loomis	E hf S hf 15	6	M F and O.	2
926	Shaffer, Wesley	E hf S hf 14	7	M F and T.	2
J 963	Thompson, David	cen pt 17	10	M F and O.	2
J 964	Thompson, Robert	E pt 17, pt 18	9	M F and O.	2
965	Thompson, John W.	E pt 17, pt 18	9	M F and F S.	2
966	Thompson, John R.	N pt N hf 15	10	M F and O.	2
967	Thompson, James	N hf 20	10	M F and O.	2
J 968	Thompson, Wm A.	N hf 20, pt 21	10	M F and T.	2
J 969	Turner, Donald	W hf N hf 15	8	M F and O.	2
J 970	Turner, Hugh	S $\frac{1}{2}$ 17, & other prem.	9	M F and O.	2
J 971	Turner, Peter	S $\frac{1}{2}$ 17, & other prem.	9	M F and T.	2
J1020	Wark, Thomas	S hf 24	9	M F and O.	9
J1023	Wood, Thomas	N hf 24	10	M F and T.	9
J1057	Wilton, Daniel W.	N hf 20	6	M F and 1.	2
J1058	Waters, Asa	N hf N hf 17	6	M F and O.	2
J1063	Wilton, Amos P.	cen pt 13	6	M F and O.	2
J1116	Webb, James	S pt N hf 15	10	M F and T.	2

PART II.—Persons entitled to Vote at Municipal Elections ONLY.

39	Buttery, Joseph	E pt N hf 18	10	O.	2
1115	Barry, John	S pt N hf 15	10	O.	2
143	Collins, Ellen	N hf S hf 13, 14	9	O.	2
142	Campbell, James	N pt N hf 15	9	O.	2
296	<i>DeGrauw Cornelius, 2 R^t 5/2 15-</i>		9	0	2
393	Graham, Annie	W hf S hf 15	8	O.	2
299	McLean, Elizabeth	N hf 23	8	O.	2
593	McGuire, Catherine	N E cor 14	9	O.	2
607	McNeil, Sarah	pt N hf 18	8	O.	2
628	McNeil, Nancy	S hf 18	8	O.	2
184	McPhail, Ellen	E hf S hf 14	8	O.	2
594	McArthur, Dugald	N hf 22	10	O.	9
595	McArthur, John	N hf 22	10	O.	9
600	McLeish, John	E hf N hf 19	9	O.	2

Roll No.	NAME.	LOT.	Concession or Street.	Other Description.	P.O.
613	McKellar, John	S hf 21	10	O	2
673	McNeil, James	E hf N hf 21	6	O	11
744	Pincombe, John	N hf 22	9	O	9
341	Pritchard, John H.	pt E hf S hf 20	9	O	14
342	Pritchard, Martha E.	pt E hf S hf 20	9	O	14
814	Robins, Edwin	W hf N hf 21	10	O	2
936	<i>Shaffer Wesley</i>	<i>5/2 5/2 14</i>	<i>7</i>	<i>J</i>	<i>2</i>
891	Sabine, Julia	W hf S hf 15	6	O	2
428	Scott, Wm	S hf 22	8	O	22

PART III.—Persons entitled to Vote at Elections to the Legislative Assembly ONLY.

52	Bell, Wm J	W hf N hf 22	8	M F	2
173	Campbell, John	S hf 23	9	M F	9
401	Gough, Nelson	N hf 22	7	M F	2
445	Hill, Wm	S hf 13	6	M F	2
588	Mitchell James	S hf 13	6	M F	2
605	McLean, Hestor	N hf 14	8	M F	2
612	McKellar, Donald	S hf 23	9	M F	9
653	McKellar, Dugald	N hf 24	6	M F	11
708	Neelands, John	S hf 13	6	M F	2
756	Pettit, Abraham	S hf 22	9	M F	2
767	Peaker, Charles	Cent pt 13	6	M F	2
857	Snelgrove, James	S W cor 13	9	M F	2
893	Sabine, Thomas	W hf 15	8	M F	2
975	Thornton, Frederick	W hf N hf 14	6	M F	2
1021	Woodworth, Albert	N hf 20	10	M F	2
1024	Watts, William	S hf 24	9	M F	9
1028	Wallace, Louis	N hf 15	7	M F	2
1054	Webb, Frederick	S hf 22	6	M F	10
1293	Waters, Wesley	N hf 20	6	M F	2

Polling Sub-Division No. 6,

Comprising all that portion of the Township lying in the 7th, 8th, 9th, and 10th
Concessions West of the Side Road between Lots 12 and 13.

PART 1.—Persons entitled to Vote at BOTH Municipal Elections and Elections to the Legislative Assembly.

Roll No.	NAME.	LOT.	Concession or Street.	Other Description.	P.O.
5	Andrews, John H	N E cor 8	8	M F and O	2
J 6	Adair, John E.	W hf N hf 6	8	M F and O	2
J 41	Barnett, Edwin	pt N hf 11	9	M F and O	2
42	Bennett, James	N hf N hf 5	10	M F and O	2
J 43	Bennett, George	N hf N hf 5	10	M F and T	2
J 44	Bennett, Arthur	E hf N hf 5	10	M F and O	2
J 45	Bolton, Wm J	S hf 8	10	M F and O	2
J 48	Black, Arch	Cent pt 11	9	M F and T	2
49	Black, Alex	Cent pt 11	9	M F and T	2
J 63	Barry, Michael	S hf S hf 1 & other pre	7 and 8	M F and O	8
J 64	Bryant, Wm	E pt S hf 5	8	M F and O	2
J 66	Bailantine, James	W hf S hf 7	8	M F and O	2
77	Bairns, John	S hf 2	7	M F and O	7
J1112	Ball, Thomas jr.	N hf 6	7	M F and O	2
156	Collins, John	pt N hf 11	9	M F and O	2
J 158	Collins, Bruce O	pt W hf 11	8	M F and T	2
159	Collins, Oscar	pt W hf 11	8	M F and O	2
160	Collins, James	pt N hf 16	9	M F and O	2
161	Case, George	Cent pt N hf 4	10	M F and O	2
162	Case, John	Cent pt N hf 4	10	M F and F S	2
J 163	Case, James	E pt N hf 4	10	M F and O	2
164	Chute, Edmund	W hf 6, W hf N hf 5	9	M F and O	2
J 165	Chute, Lionel	W hf 6, W hf N hf 5	9	M F and T	2
166	Chute, Jesse	W hf 6, W hf N hf 5	9	M F and F S	2
J 167	Cowan, Wm	S hf 7 and other prem	9	M F and O	2
J 168	Cowan, Leslie R	S hf 7 and other prem	9	M F and T	2
J 171	Cawthrope, Wm	N hf 8, pt N hf 11	8 and 9	M F and O	2
174	Columbus, Isaac	N hf 12	7	M F and O	2
J 175	Campbell, John A	E hf S hf 12	7	M F and O	2
179	Cowan, Alex	E pt N hf 2	8	M F and O	8
J 180	Cowan, Ronald	E hf S hf 3, E hf S hf 4	8	M F and O	2
181	Cowan, Dougald	W hf S hf 4	8	M F and O	2
J 185	Columbus, James	E pt N hf 10	8	M F and O	2
186	Clement, George	N hf 7	8	M F and O	2
J 199	Caldwell, Thomas	S pt 1	7	M F and T	13

Roll No.	NAME.	LOT.	Concession or Street.	Other Description.	P.O.
J 291	Dodge, Thor	S hf W hf 3	10	M F and O	2
J 292	Dodge, John	N hf 3	10	M F and O	2
J 293	Doan, Abraham	W hf N hf 7	9	M F and O	2
J 301	Drake, John	E pt S hf 5	9	M F and O	2
J 304	Down, William	E hf S hf 3	7	M F and T	7
J 322	Elliott, George A.	E pt S hf 12	9	M F and O	2
J 325	Elliott, Henry	E pt S hf 1	10	M F and T	8
326	Elliott, Win H.	W pt S hf 12	9	M F and O	2
J 336	Ferguson, Ed G.	E pt S hf 5	10	M F and O	2
J 337	Ferguson, Richard	pt 10 and 11	9	M F and O	2
338	Farthing, Wm	N pt E pt 12	8	M F and O	2
J 339	Farthing, John	S pt E $\frac{1}{2}$ E $\frac{1}{2}$ 11, & other pre.	8	M F and O	2
J 340	Ferguson, James	E hf 10, pt 10 and 11	8 and 9	M F and O	2
	<i>Fisher Clewett</i>	<i>7/2 1/2 7</i>	<i>8</i>	<i>M F and T</i>	<i>2</i>
J 387	Gregory, Thomas	E hf N $\frac{1}{2}$ 1, W $\frac{1}{2}$ S $\frac{1}{2}$ 1.	9 and 10	M F and O	8
J 388	Gilzean, George D	W pt 10	9	M F and O	2
389	Gripton, Henry	W hf E hf 11	8	M F and O	2
390	Gripton, Wm T.	W hf E hf 11	8	M F and F S.	2
391	Getty, Wm C.	Cent pt N hf 8	8	M F and O	2
J 394	Gallagher Owen	N hf 2	7	M F and O	2
395	Gallagher, Michael	N hf 2	7	M F and F S.	2
396	Gallagher, Eugene	N hf 2	7	M F and F S.	2
J 397	Gallagher, John	W hf S hf 3	8	M F and O	2
J 425	Hunter, Cyrus	N E hf 6	9	M F and O	2
J 432	Harrington, Daniel	N hf 1	8	M F and O	8
433	Harrington, John sr.	W hf S hf 1	8	M F and O	8
434	Harrington, John jr.	W hf S hf 1	8	M F and F S.	8
J 507	Jones, William	W pt N hf 8	9	M F and T	2
J 509	Jennings, John	S E pt S hf 11	9	M F and T	2
J 511	Kernohan, John	N hf 2	9	M F and O	8
512	Kitchen, John D	E pt S hf 9, pt 6	9 and 8	M F and O	2
J 513	Kitchen, Hiram	S hf N hf 8	8	M F and T	2
J 514	Kitchen, Harman	W pt S hf 9	9	M F and T	2
J 536	Lamont, John	S hf 9	8	M F and O	2
J 538	Lamont, Donald	N hf 11, pt 10	7	M F and O	2

POLLING SUB-DIVISION No. 6.

31

Roll No.	NAME.	LOT.	Concession or Street.	Other Description.	P.O.
539	Lamont, Duncan	N hf 11, pt 10	7	M F and F S.	2
J 543	Lamont, Arch	S hf 11, pt S hf 10	7	M F and O.	2
546	Lipsit, Charles	W ½ S hf 6.	7	M F and O.	1
J 634	McGurn, Edward	E pt S hf 2	9	M F and O.	8
J 635	McGurn, Wm	E pt S hf 2	9	M F and O.	8
J 637	McDougall, Hugh	N hf 4, W hf S hf 5.	7 and 8	M F & O & T.	2
J 638	McDougall, Duncan	N hf 4, W hf S hf 5.	7 and 8	M F & O & T.	2
J 639	McDougall, Allan	S hf 6	8	M F and O.	2
640	McNeil, John er	S hf S hf 8	8	M F and O.	2
641	McNeil, John jr	S hf S hf 8	8	M F and F S.	2
642	McNeil, Arch	S hf S hf 8	8	M F and F S.	2
643	McNeil, Alex	S hf S hf 8	8	M F and F S.	2
1029	McArthur, Neil	N hf 5.	8	M F and O.	2
703	Nichols, Edward	pt N hf 12	9	M F and T.	2
J 706	Northcott, James E.	S hf 8.	9	M F and O.	2
707	Northcott, Ed H.	E hf W hf S hf 6	7	M F and O.	1
730	Ogg, Andrew	E hf N hf 8.	7	M F and O.	2
J 731	Oak, Thor	E pt N hf 3	8	M F and O.	8
732	Oak, Lawrence	W pt N hf 3	8	M F and O.	2
J 733	Oak, James	W pt N hf 3	8	M F and T.	2
745	Pike, Thomas	N hf N hf 6	10	M F and O.	2
J 746	Pike, William	N hf N hf 6	10	M F and T.	2
J 747	Patterson, Thomas	S hf N hf 6.	10	M F and O.	2
J 748	Patterson, George	W hf 2.	10	M F and O.	8
J 749	Patterson, Andrew	E hf 2	10	M F and O.	8
J 750	Patterson, Joseph	pt N hf S hf 5	10	M F and O.	2
751	Powers, John	W pt S hf 1	9	M F and O.	2
J 755	Perkins, Peter	W hf W hf 11	8	M F and T.	2
J 754	Pilfrey, Wm A	S W pt S hf 10.	9	M F and O.	2
J 755	Pilfrey, John	S W pt S hf 10	9	M F and O.	2
J 757	Powers, Alfred	S hf 9	7	M F and O.	2
758	Powers, John A	S hf 9	7	M F and F S.	2
J 760	Paine, John J	W hf S hf 4.	9	M F and O.	8
J 761	Payne, Thomas H.	E hf S hf 3.	9	M F and O.	8
J 766	Patterson, Neil	W hf S hf 3	7	M F and O.	7
J 812	Quick, Wm	W hf S hf 7	9	M F and O.	2
813	Quick, Robert J	W hf S hf 7	9	M F and F S.	2
J 817	Robinson, Joseph	N pt S hf 7.	10	M F and T.	2
J 818	Robinson, Thomas	N pt S hf 7	10	M F and T.	2
J 822	Root, Nathaniel	E pt N hf 6.	8	M F and O.	2

Roll No.	NAME.	LOT.	Concession or Street.	Other Description.	P.O.
J 858	Saxton, Francis B.	pt N hf 9 & other pre	10	M F and O	2
861	Sumner, Samuel	W pt N hf 4	10	M F and T	2
J 862	Saxton, George	S hf 9, pt S hf 7	10	M F and O	2
J 863	Stuart, Joseph W.	pt N hf 11	9	M F and O	2
J 864	Saxton, Wm B	cent pt 12 & other pre	8	M F and O	2
J 865	Saxton, John R.	E hf N hf 3	7	M F and O	2
866	Saxton, John E.	S W pt 12	8	M F and O	2
J 868	Sabine, Richard	W pt N $\frac{1}{2}$ 10 & other pre	8	M F and T	2
J 869	Simpson, Charles	pt N hf 10, pt S hf 10	8 and 9	M F and O	2
870	Schram, Frederick	N hf S hf 8	8	M F and O	2
J 871	Schram, John	N hf S hf 8	8	M F and O	2
J 873	Saxton, Swain	N hf 9	7	M F and O	2
J 888	Snelgrove, Samuel	W hf S hf 12	7	M F and O	2

J 974 Tull, Joseph S hf E hf 3 10 M F and O 2

1004 Vincent, Jacob N hf S hf 8 7 M F and O 2

J 1005 Vincent, George S hf S hf 8 7 M F and O 2

J 859 Vincent, George sr S hf 4 10 M F and O 2

1025 Waters, Samuel pt N hf 11 9 M F and O 2

1026 Welsh, John pt N hf 11 9 M F and O 2

J 1027 Wrinkle, Joseph N hf 1 10 M F and T 2

J 1030 Wilson, John W N hf 5 8 M F and T 2

J 1050 Whiting, John jr W pt N hf 5 7 M F and O 2

J 1051 Whiting John sr E pt N hf 5 7 M F and O 2

J 1060 Waken, Albert W hf S hf 5 7 M F and O 7

J 1113 Weekes, Christopher N hf 6 7 M F and T 2

~~867 Woodward, Albert A W pt N hf 10 8 M F and O 2~~

PART II. - Persons entitled to Vote at Municipal Elections ONLY.

2 Auttonson, James pt N hf 3 9 O 2

47 Adamson, James cent pt 11 9 O 15

508 Allison, Peter J S E pt S hf 11 9 O 2

46 Barton, Julia E cor N hf 8 8 O 2

65 Ballantine, Arch E hf S hf 7 8 O 2

178 Cowan, Mary N hf 4 8 O 2

289 Degraw, Eliza pt N hf 11 9 O 2

303 Davidson, Ann E hf S hf 3 7 O 2

384 Gunn, Hector N hf 8 10 O 2

1303 Healey, James N hf 1 10 O 2

506 Jeffrey, David S cor S hf 9 10 O 2

542 Lambert, Rachel W hf N hf 7 7 O 2

636 Lethbridge, Samuel N hf 4 7 O 2

W 867 Woodward, Albert A. W pt n $\frac{1}{2}$ 10. 8 @ 2

Roll No.	NAME.	LOT.	Concession or Street.	Other Description.	P.O.
385	Murray, Wm H	N hf 8	10	O	2
860	Mann, James	W pt N hf 4	10	O	2
574	Morrow, Ann	W hf N hf 8, pt 7	7	O	2
633	McCaffrey, Elizabeth	W hf S hf 3	9	O	8
702	Nichols, Ann	pt N hf 12	9	O	2
729	Ogden, Henry H	N E cor N hf 9	10	O	20
764	Payne, Margaret	E hf S hf 1	9	O	8
743	Pincombe, Richard	E hf S hf 12	8	O	2
762	Pearson, Edward	N hf S hf 1	9	O	8
763	Pearson, Joseph	W hf N hf 1	9	O	8
769	Parsons, Edwin	N E cor 9	10	O	2
759	Pettit, Richard	W pt S hf 5	9	O	8
815	Reynolds, Isabella	E pt N hf 5	9	O	2
816	Robinson, Amelia	N pt S hf 7	10	O	2
823	Rowe, Wm O	W hf N hf 2	8	O	8
824	Rowe, Wm	W pt S hf 2	9	O	8

PART III.—Persons entitled to Vote at Elections to the Legislative Assembly ONLY.

4	Ames, Asael	pt N hf 4	9	M F	2
770	Campbell, John L	S hf 4	7	M F	2
290	Dodge, George	S hf W hf 3	10	M F	2
386	Guille, Nicol	N hf 8	10	M F	2
427	Haldanc, James	W pt N hf 4	8	M F	2
537	Lihon, James	E pt N hf 5	9	M F	2
540	Long, Griffith	S hf 8	7	M F	2
541	Long, George	N hf 4	7	M F	2
632	McArthur, John	E pt S hf 5	9	M F	2
705	Noble, John	E pt N hf 3	9	M F	2
877	Sullivan, John	N hf 1	8	M F	8
1117	Young, Albert, E	E hf 10	8	M F	2

Polling Sub-Division No. 7,

Comprising all that portion of the Township lying in the 3rd, 4th and 5th Concessions East of the Side Road between Lots 12 and 13.

PART 1.—Persons entitled to Vote at BOTH Municipal Elections and Elections to the Legislative Assembly.

Roll No.	NAME.	LOT.	Concession or Street.	Other Description.	P.O.
J 7	Adams, Ebenezer	S hf N hf 20	5	M F and O	1
J 10	Adair, Joseph H	N hf 15	4	M F and O	1
J 13	Adair, Wm N	N pt N hf 17	4	M F and T	1
J 15	Arnold, Robert	pt N hf 17, E hf 17	3 and 4	M F and T	1
18	Adams, Reuben	pt S hf 17	4	M F and O	1
J 19	Arnold, Reuben	E $\frac{1}{2}$ S $\frac{1}{2}$ 20, & other pre.	4	M F and O	1
218	Arnold, Robert	E $\frac{1}{2}$ S $\frac{1}{2}$ 20, & other pre.	4	M F and F S.	1
J 67	Baxter, Francis	N pt N hf 16	5	M F and O	1
J 68	Baxter, Thomas	S pt N hf 16	5	M F and O	1
J 69	Bond, William	N hf 17	5	M F and O	1
J 79	Bond, James	S pt S hf 15	5	M F and O	1
J 80	Bond, Robert	W hf S hf 14	5	M F and O	1
J 84	Bond, Stephen	pt N hf 14	3	M F & O & T.	1
J 85	Benjamin, Joseph	E hf S hf 14	4	M F and T	1
J 87	Bond, George	E pt S $\frac{1}{2}$ 16, & other pre.	4 and 5	M F and O	1
J 88	Black, George	pt E hf 18	4	M F and O	1
J 89	Black, Wm F	pt E hf 18	4	M F and T	1
90	Bidnall, Edward	S cor S hf 23	3	M F and O	1
J 95	Brearly, Henry	N hf N hf 20	4	M F and O	1
J 97	Branton, Wm	E hf N hf 23, N hf 22.	4	M F & O & T.	10
140	Badge, George	pt S hf 18	3	M F and O	1
141	Badge, Wm	N pt S hf 18	3	M F and O	1
J 320	Badge, Humphrey	N hf N hf 18	3	M F and O	1
187	Carman, Edward	E hf S hf 19	5	M F and O	1
J 189	Campbell, John	pt W $\frac{1}{2}$ 22, pt E $\frac{1}{2}$ 22	5	M F and O	10
J 193	Campbell, Donald M.	E hf N hf 23	5	M F and O	10
J 194	Campbell, Arch L.	E hf N hf 23	5	M F and T	10
205	Campbell, Mal sr	N hf 13	4	M F and O	2
J 206	Campbell, Peter	N hf 13	4	M F and T	2
J 207	Campbell, Mal jr	W hf N hf 13	5	M F and O	2
J 209	Campbell, Wm	W $\frac{1}{2}$ N $\frac{1}{2}$ 15, & other pre.	5	M F and O	1
210	Courtis, Thomas	W $\frac{1}{2}$ N $\frac{1}{2}$ 15, & other pre.	5	M F and F S.	1
211	Campbell, Arch	N hf 14	4	M F and O	1
J 212	Campbell, Donald A.	N hf 14	4	M F and T	1
J 213	Clement, Morris	pt W hf 18	4	M F and O	1

Roll No.	NAME.	LOT.	Concession or Street.	Other Description.	P.O.
J 214	Chamberlain, Wm	E pt S hf 23	3	M F and O	1
J 215	Coates, Furlow	W pt S hf 19	3	M F and O	1
J 1139	Clark, John	1, 2 blk E, pt 17	2 and 3	M F and O	1
J 1143	Cullen, John	9 to 14, E Ad st	3, Mt Bgs	M F and O	1
J 302	Davidson, John J	S hf 20, pt 19	4 and 5	M F and O	1
J 305	Davidson, Thomas	W $\frac{1}{2}$ S $\frac{1}{2}$ 19, & other pre	4 and 5	M F and O	1
J 328	Edwards, Richard	N pt S hf 15	5	M F and O	1
J 346	Fletcher, Dugald	pt E hf 22, & other pre	5	M F and O	10
377	Forsythe, Wm	pts 17 and 18	3	M F and O	1
379	Fisher, Benj W	pts N hf 17 and 18	3	M F and T	1
J 381	Francis, Chas B	pt S hf N hf 18	3	M F and O	1
J 1149	Fisher, George	W Ad st 6,7,8 & other pre	3, Mt Bgs	M F and O	1
J 1150	Francis, Wm	pt S hf 17, & other pre	3	M F and O	1
398	Green, Edward	E hf N hf 21	5	M F and O	2
J 399	Green, Thomas	E hf N hf 21, pt 20	5 and 6	MF and O & T	2
J 405	Getty, Albert	N hf 15	3	M F and O	1
J 410	Glover, David	W hf S hf 21	4	M F and O	1
J 411	Glover, James	W hf S hf 22	4	M F and O	1
1159	Geddes, Wm	NE cor N $\frac{1}{2}$ 22, & other pre	3	M F and O	1
1163	Gardiner, David	3, 4, 5 E Emer st	3, Mt Bgs	M F and O	1
J 454	Hyatt, Horace	N hf 13, & other prem	3	MF and O & T	1
455	Humphrey, George	pt N hf 17	3	M F and O	1
499	Humphrey, Henry	cen pt N hf 18	4	M F and O	1
J 498	Iles, Wm	pt N hf 18, W $\frac{1}{2}$ S $\frac{1}{2}$ 18	4 and 5	M F and T	1
J 544	Lamont, Duncan	N hf 24	4	M F and O	10
J 545	Lamont, Hugh	S cor S hf 23	4	M F and O	10
549	Leitch, Christopher	E hf S hf 18	5	M F and O	1
550	Leitch, Francis C	E hf S hf 18	5	M F and F S	1
551	Leitch, Saml R B	E hf S hf 18	5	M F and F S	1
552	Leitch, James C	E hf S hf 18	5	M F and O	1
553	Lewis, Eugene	N cor 24	3	M F and O	1
J 554	Lipsit, Levi	E pt S hf 19	3	M F and O	1
556	Lindsay, Geo H	S hf 16	3	M F and F S	1
557	Lindsay, Henry G	S hf 16	3	M F and F S	1

Roll No.	NAME.	LOT.	Concession or Street.	Other Description.	P.O.
J 575	Milner, James	S hf N hf 20	4	M F and O	1
J 576	Mahon, John	W pt N hf 16	4	M F and O	1
1193	Malcolm, Wallace	E Ad st 15, 16, Mt Bgs	3	M F and O	1
J 1197	Mines, James	pts 17, 18 & other pre	3	M F and O	1
J 644	McBain, Dugald	S hf 23	5	M F and O	10
J 648	McMurphy, Duncan	W hf N hf 23	4	M F and O	10
J 649	McMurphy, John	W hf N hf 23	4	M F and T	10
650	McCallum, Neil	N hf 24	5	M F and O	10
651	McCallum, John	N hf 24	5	M F and T	10
J 670	McDougall, Alex	pts 13 and 14	5	M F and O	2
J 712	Northcott, Wm	pt N hf 16	4	M F and O	1
715	Norton, Wm	N W pt N hf 22	3	M F and O	1
J 777	Parrott, George B	W $\frac{1}{2}$ S $\frac{1}{2}$ 13, & other pre	4	M F and O	1
778	Parrott, John S	W $\frac{1}{2}$ S $\frac{1}{2}$ 13, & other pre	4	M F and F S	1
779	Parrott, Edward	W $\frac{1}{2}$ S $\frac{1}{2}$ 13, & other pre	4	M F and F S	1
J 811	Pool, Joseph	E hf S hf 22	4	M F and O	24
1205	Raymond, Moses	W Ad st 5	3, Mt Bgs	M F and T	1
J 892	Sabine, Caleb	E hf N hf 15	5	M F and O	2
909	Sisson, Joseph	pt S hf 16	4	M F and O	1
910	Sisson, Cephas	S eor S hf 16	4	M F and O	1
J 911	Smith, Wm H	W hf S hf 20	4	M F and O	1
912	Smith, Wm	W hf S hf 20	4	M F and O	1
913	Sullivan, Thos	W hf N hf 20	3	M F and O	1
J 914	Sullivan, John	W hf N hf 20	3	M F and T	1
J 880	Snelgrove, Wm	N hf 19	5	M F and O	1
J 881	Snelgrove, Wm Y	E hf N hf 18, pt 18	5 and 6	M F and O	1
J 882	Snelgrove, Lemuel	W hf N hf 18	5	M F and O	1
J 883	Sinclair, John	S hf 24	5	M F and O	10
J 916	Sutherland, Robt	S hf 13	3	M F and O	1
J 917	Steer, Richard	W hf S hf 14	3	M F and O	1
922	Steer, Norman	S hf 13	3	M F and F S	1
J 976	Thomas, Wm	N hf 19	3	M F and O	1
J 981	Thomas, David	S hf 21	3	M F and O	1
986	Thompson, John H	W pt S hf S hf 14	3	M F and O	1
1188	Tupper, Martin	W Ad st 15, P st 15	3, Mt Bgs	M F and T	1

Roll No.	NAME.	LOT.	Concession or Street.	Other Description.	P.O.
1006	Veale, Wm	cen pt 16	5	M F and O	1
1008	Veale, Richard	W pt S hf 16	5	M F and O	1
1009	Veale, Arch	pt S hf 16	5	M F and O & T	1
1011	Vennor, Solomon	N hf 16	3	M F and O	1
1012	Vennor, Francis	N hf 16	3	M F and F S	1
1016	Vannatter, John N	E pt N hf 21	3	M F and O	1
1018	Vannatter, Daniel	pt 19	4	M F and O	1
1019	Vannatter, James	pt 19	4	M F and O	1
1219	Vrooman, Nelson	pt reserve	3	M F and T	1
1052	Wilton, Daniel	W hf S hf 17	5	M F and O	1
1053	Wilton, Thomas	E hf S hf 17	5	M F and O	1
1064	Wicket, Richard	W hf S hf 13	5	M F and O	2
1065	Waters, Lindley	E hf S hf 13	5	M F and O	2
1074	Wyatt, Wm	W hf S hf 14, pt 13	4	M F and O	1
1075	Winter, Wm	S hf 15	4	M F and O	1
1076	Willsie, Asa	E hf N hf 20	3	M F and O	1
1077	Winter, George	E pt N hf 21	3	M F and O	1
1078	Waters, John	W hf S hf 22, pt 23	3	M F and O	1
1080	Walker, John H	S hf 24	3	M F and O	1
1081	Walker, Wm	S hf 24	3	M F and O	1
1085	Weekes, Thomas	S hf 20	3	M F and O	1
1226	Wadsworth, Thos.	Park 3, 5, 6	3, Mt Bgs	M F and O	1

PART II.—Persons entitled to Vote at Municipal Elections ONLY.

16	Badge, Betsy	E hf 17	4	O	1
920	Cornwall, Dennis	E pt S hf 14	3	O	1
321	Davidson, Marg'et A.	N hf N hf 18	3	T	1
1148	Fisher, Keziah	E Ad st 7, & other pre	3, Mt Bgs	O	1
1164	Gibson, Hannah	10 to 14, W Ad st	3, Mt Bgs	O	1
1165	Gustin, Sarah J.	pt S hf 17	3	O	1
453	Getty, Mary	N hf 13	3	O	2
83	Getty, Amity	E pt N hf 14	3	O	1
400	Graham, Duncan	S hf 24	4	O	10
1218	Hoffman, Andrew	pt reserve	3, Mt Bgs	O	1
573	Lemon, Sarah	pt N hf 17, 18	3	O	1
1187	London, Sarah	Park 1, 2, & other pre	3, Mt Bgs	O	1
1188	Littlejohn, Annie	W Ad st 15, P st 15	3, Mt Bgs	O	1
1190	Lipsit, Jane	E Ad st 17	3, Mt Bgs	O	1
378	Mihell, Mabel R	pt N hf 17 and 18	3	O	21
645	McIntaggart, Lauchlin	N hf 24	4	O	10
646	McKellar, Neil	pt S hf 23	4	O	11

Roll No.	NAME.	LOT.	Concession or Street.	Other Description.	P.O.
647	McIntyre, Hugh	N hf 21	4	O	10
11	McEvoy, Andrew M.	pt 17	3 and 4	O	14
12	McEvoy, John	pt 17	3 and 4	O	14
97	McMurphy, John	E hf N hf 23	4	O	10
921	Steer, Emily	S hf 13	3	O	1

PART III.—Persons entitled to Vote at Elections to the Legislative Assembly ONLY.

<i>W</i>	<i>Amies</i>				
14	Amies , George	N hf 14	3	M F	1
17	Arnold, John	pt N hf 17	3	M F	1
<i>W</i>	<i>Badge George Jr</i>	<i>Rt 18</i>	<i>3</i>	<i>M F</i>	<i>1</i>
1299	Lipsit, Lewis	E Ad st, 17	3	M F	1
1300	Lipsit, George	E Ad st, 17	3	M F	1
1192	Malcolm, Joseph H.	E Ad st, 15 and 16	3	M F	1
713	Northcott, Thomas A.	pt N hf 16	4	M F	1
728	Orr, Charles	E hf N hf 15	5	M F	1
894	Steinhoff, Abraham	N pt S hf 15	5	M F	2
973	Thody, Wm	N E pt 14	5	M F	2
1007	Veale, John	cent pt 16	5	M F	1
1010	Veale, John R	W pt S hf 16	5	M F	1
1017	Vammatter, James	S hf 19	4	M F	1
1082	Walker, Christmas	S hf 24	3	M F	1

628 of the within named voters are qualified to serve on Juries.

I, M. McGUGAN, Clerk of the Municipality of Caradoc, in the County of Middlesex, do hereby certify that parts one and three of the within list constitute a correct list for the year 1889, of all persons appearing by the last revised assessment roll of the said Municipality to be entitled to vote at elections for members of the Legislative Assembly; and that parts one and two constitute a correct list for said year of all persons appearing by the said roll to be entitled to vote at Municipal Elections in said Municipality, and I hereby call upon all electors to examine the said list, and if any omissions or other errors are perceived therein, to take immediate proceedings to have the said errors corrected according to law.

Dated this 6th day of July, 1889.

M. McGUGAN,
Clerk of the aforesaid municipality of Caradoc,
Strathroy, P. O.

A40NCC001218X7V54 OE

7440NCC000212X7V54 OE

1889
Revised Valued Lists

The Sheriff shall immediately, upon the receipt of his copies, cause one of them to be posted up in a conspicuous place in the Court House; the Clerk of the Peace, upon the receipt of his copies, shall cause one of them to be posted in a conspicuous place in his office; every Public or Separate School Head Master or Mistress shall in like manner post up one of his or her copies on the door of the School House and every Postmaster shall post up one of his copies in his Post Office.—39 Vic. Chap. 11, Sec. 2.

