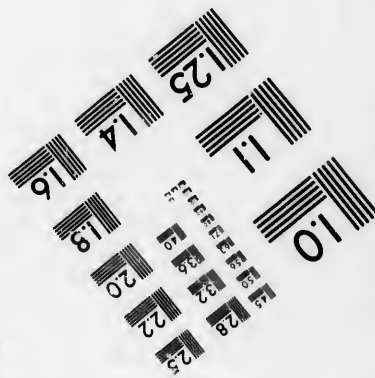
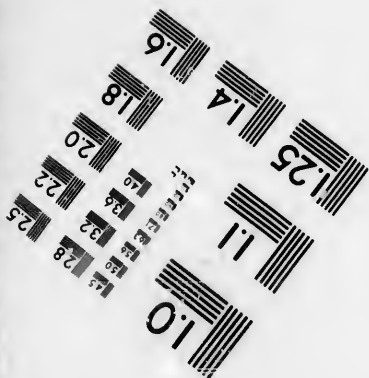
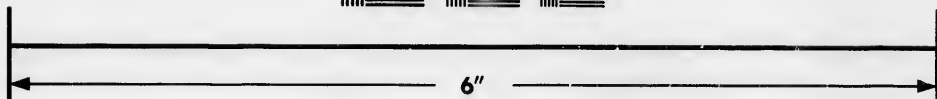
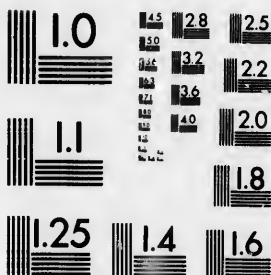


**IMAGE EVALUATION
TEST TARGET (MT-3)**



**Photographic
Sciences
Corporation**

23 WEST MAIN STREET
WEBSTER, N.Y. 14580
(716) 872-4503

1.8
2.0
2.2
2.5
2.8
3.2
3.6
4.0

**CIHM/ICMH
Microfiche
Series.**

**CIHM/ICMH
Collection de
microfiches.**



Canadian Institute for Historical Microreproductions / Institut canadien de microreproductions historiques

1.0
1.8
2.0

© 1986

Technical and Bibliographic Notes/Notes techniques et bibliographiques

The Institute has attempted to obtain the best original copy available for filming. Features of this copy which may be bibliographically unique, which may alter any of the images in the reproduction, or which may significantly change the usual method of filming, are checked below.

L'institut a microfilmé le meilleur exemplaire qu'il lui a été possible de se procurer. Les détails de cet exemplaire qui sont peut-être uniques du point de vue bibliographique, qui peuvent modifier une image reproduite, ou qui peuvent exiger une modification dans la méthode normale de filmage sont indiqués ci-dessous.

- | | |
|--|--|
| <input type="checkbox"/> Coloured covers/
Couverture de couleur | <input type="checkbox"/> Coloured pages/
Pages de couleur |
| <input type="checkbox"/> Covers damaged/
Couverture endommagée | <input type="checkbox"/> Pages damaged/
Pages endommagées |
| <input type="checkbox"/> Covers restored and/or laminated/
Couverture restaurée et/ou pelliculée | <input type="checkbox"/> Pages restored and/or laminated/
Pages restaurées et/ou pelliculées |
| <input type="checkbox"/> Cover title missing/
Le titre de couverture manque | <input checked="" type="checkbox"/> Pages discoloured, stained or foxed/
Pages décolorées, tachetées ou piquées |
| <input type="checkbox"/> Coloured maps/
Cartes géographiques en couleur | <input type="checkbox"/> Pages detached/
Pages détachées |
| <input type="checkbox"/> Coloured ink (i.e. other than blue or black)/
Encre de couleur (i.e. autre que bleue ou noire) | <input type="checkbox"/> Showthrough/
Transparence |
| <input type="checkbox"/> Coloured plates and/or illustrations/
Planches et/ou illustrations en couleur | <input type="checkbox"/> Quality of print varies/
Qualité inégale de l'impression |
| <input type="checkbox"/> Bound with other material/
Relié avec d'autres documents | <input type="checkbox"/> Includes supplementary material/
Comprend du matériel supplémentaire |
| <input type="checkbox"/> Tight binding may cause shadows or distortion
along interior margin/
La reliure serrée peut causer de l'ombre ou de la
distorsion le long de la marge intérieure | <input type="checkbox"/> Only edition available/
Seule édition disponible |
| <input type="checkbox"/> Blank leaves added during restoration may
appear within the text. Whenever possible, these
have been omitted from filming/
Il se peut que certaines pages blanches ajoutées
lors d'une restauration apparaissent dans le texte,
mais, lorsque cela était possible, ces pages n'ont
pas été filmées. | <input type="checkbox"/> Pages wholly or partially obscured by errata
slips, tissues, etc., have been refilmed to
ensure the best possible image/
Les pages totalement ou partiellement
obscurcies par un feuillet d'errata, une pelure,
etc., ont été filmées à nouveau de façon à
obtenir la meilleure image possible. |
| <input checked="" type="checkbox"/> Additional comments: /
Commentaires supplémentaires: | [Printed ephemera] 1 sheet (verso blank) |

This item is filmed at the reduction ratio checked below/
Ce document est filmé au taux de réduction indiqué ci-dessous.

10X	14X	18X	22X	26X	30X
<input type="checkbox"/>	<input type="checkbox"/>	<input type="checkbox"/>	<input type="checkbox"/>	<input checked="" type="checkbox"/>	<input type="checkbox"/>
12X	16X	20X	24X	28X	32X

The copy filmed here has been reproduced thanks to the generosity of:

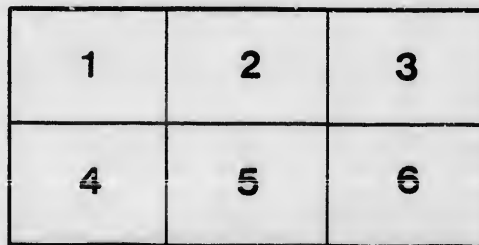
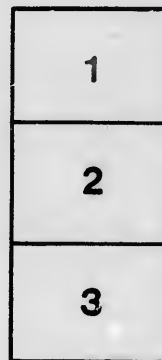
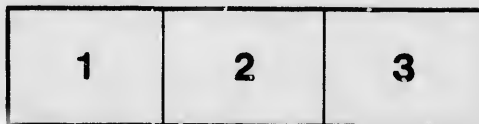
Manuscript Division
Public Archives of Canada

The images appearing here are the best quality possible considering the condition and legibility of the original copy and in keeping with the filming contract specifications.

Original copies in printed paper covers are filmed beginning with the front cover and ending on the last page with a printed or illustrated impression, or the back cover when appropriate. All other original copies are filmed beginning on the first page with a printed or illustrated impression, and ending on the last page with a printed or illustrated impression.

The last recorded frame on each microfiche shall contain the symbol \rightarrow (meaning "CONTINUED"), or the symbol ∇ (meaning "END"), whichever applies.

Maps, plates, charts, etc., may be filmed at different reduction ratios. Those too large to be entirely included in one exposure are filmed beginning in the upper left hand corner, left to right and top to bottom, as many frames as required. The following diagrams illustrate the method:



L'exemplaire filmé fut reproduit grâce à la générosité de:

Division des manuscrits
Archives publiques du Canada

Les images suivantes ont été reproduites avec le plus grand soin, compte tenu de la condition et de la netteté de l'exemplaire filmé, et en conformité avec les conditions du contrat de filmage.

Les exemplaires originaux dont la couverture en papier est imprimée sont filmés en commençant par la première page et en terminant soit par la dernière page qui comporte une empreinte d'impression ou d'illustration, soit par la seconde page, selon le cas. Tous les autres exemplaires originaux sont filmés en commençant par la première page qui comporte une empreinte d'impression ou d'illustration et en terminant par la dernière page qui comporte une telle empreinte.

Un des symboles suivants apparaîtra sur la dernière image de chaque microfiche, selon le cas: le symbole \rightarrow signifie "A SUIVRE", le symbole ∇ signifie "FIN".

Les cartes, planches, tableaux, etc., peuvent être filmés à des taux de réduction différents. Lorsque le document est trop grand pour être reproduit en un seul cliché, il est filmé à partir de l'angle supérieur gauche, de gauche à droite, et de haut en bas, en prenant le nombre d'images nécessaire. Les diagrammes suivants illustrent la méthode.

AFTER DISTRICT GENERAL ORDER.

HIS EXCELLENCY MAJOR GENERAL SIR GEORGE ARTHUR feels the greatest gratification in announcing to the Queen's Regular Troops, and to Her Majesty's Militia of the Province, now so happily engaged hand in hand in the defence of their Country, against internal disaffection, and against the most cruel and unjust aggression from abroad, that their united efforts have proved decidedly effectual in overcoming a gang of desperadoes, who lately had the temerity to make a descent, from the United States, on the Canadian Shore of the St. Lawrence, between Prescott and Johnstown.

The Pirates, on landing, took possession of some Stone Houses, and a Stone Mill, of extraordinary strength of masonry, about one and a half mile below the former place; of these they held possession for some time, closely blockaded by the loyal Militia, under Colonel Plomer Young, Particular Service, until reinforced by Colonel the Honourable Henry Dundas, with a Demi Field Battery of the Royal Artillery, and some Companies of the 83rd Regiment, from Kingston. Against such a Force, when supplied with Heavy Artillery, it was impossible for the Enemy long to hold out; and after the Stone Houses had been destroyed, a White Flag was hoisted at the Mill, and its occupiers were permitted to surrender at discretion.

The fruits of these gallant proceedings, consisted of about *one hundred and sixty-seven Prisoners*, exclusively of about *sixteen wounded*.

It is reported, that not less than fifty-six of the Enemy were killed during the operations.

Colonel the Honourable Henry Dundas, Colonel Plomer Young, and Captain Sandom, Royal Navy, Commanding the Naval Flotilla, speak in the very highest terms of the gallantry, good conduct, and extraordinary forbearance, of the whole of Seamen and Marines, the Regular Force, the Militia and the Volunteers, employed on the occasion.

The British loss consists of Lieutenant Johnston, 83rd Regiment; Lieutenant Dulmage, of the Grenville Militia, killed; and Lieutenant Parker, Royal Marines, and Lieutenant Parslow, of the Militia, wounded; with about forty-five Rank and File killed and wounded.

The loss of the Brigands was particularly severe in Officers, among whom were the self-styled Generals Brown, and Phillips.

His Excellency Major General Sir George Arthur cannot sufficiently applaud the alacrity and firmness with which Colonel Plomer Young, attacked the Brigands, with a very inferior force, on their first appearance on the Canada Shore; and the gallantry with which the Detachments of the 83rd Regiment, and Royal Marines, with the Militia under his command, drove them to seek a temporary security in the Mill and Houses: in which, however, they found it totally impracticable long to maintain themselves against British valour and persevering intrepidity.

The Major General also offers his warmest thanks to Colonel Dundas, for the able disposition of his Force, and his indefatigable exertions; to Colonel McBean, R. A.; to Colonel R. Duncan Fraser; to Lieutenant Colonel Gowan; and Captain George Macdonald; and to all the Officers of the Militia and Volunteers, whose names he is alone prevented from particularising, by the casual absence of the Despatch from Colonel Young, which enumerated them; and His Excellency is confident that the gallant example now shewn, will be followed with equal loyalty and spirit, by all the Militia of the Province, should their services be called for.

To Captain Sandom, Commanding the Royal Navy, likewise are His Excellency's thanks most fully due, for his vigilance and able co-operation; and to Lieutenant Fowell, Royal Navy, who so gallantly commanded Her Majesty's Steamer "EXPERIMENT," which although so inferior in point of size and power, obliged the enemy's Steamer "UNITED STATES," to seek refuge in an American Port.

His Excellency the Lieutenant Governor, likewise, has much pleasure in congratulating Colonel Carmichael, Particular Service, and the loyal and gallant Glen-garry Militia Regiments, under Colonels McDonell, Fraser, Chisholm, and McDonell, whose ready aid in moving into the Lower Province, mainly contributed to the re-capture of the "*Henry Brougham*," and has earned for them the high approbation of His Excellency the Commander of the Forces.

By Command.

C. FOSTER,
COLONEL,
Assist. Adj't. Gen'l.

