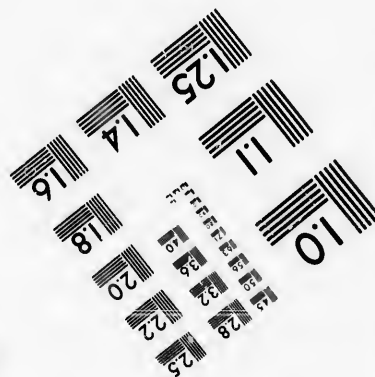
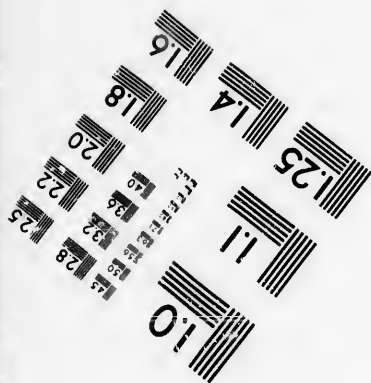
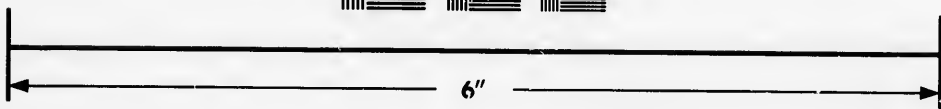
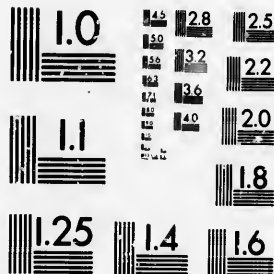


**IMAGE EVALUATION  
TEST TARGET (MT-3)**



**Photographic  
Sciences  
Corporation**

23 WEST MAIN STREET  
WEBSTER, N.Y. 14580  
(716) 872-4503



**CIHM/ICMH  
Microfiche  
Series.**

**CIHM/ICMH  
Collection de  
microfiches.**



Canadian Institute for Historical Microreproductions / Institut canadien de microreproductions historiques



**© 1986**

Technical and Bibliographic Notes/Notes techniques et bibliographiques

The Institute has attempted to obtain the best original copy available for filming. Features of this copy which may be bibliographically unique, which may alter any of the images in the reproduction, or which may significantly change the usual method of filming, are checked below.

L'Institut a microfilmé le meilleur exemplaire qu'il lui a été possible de se procurer. Les détails de cet exemplaire qui sont peut-être uniques du point de vue bibliographique, qui peuvent modifier une image reproduite, ou qui peuvent exiger une modification dans la méthode normale de filmage sont indiqués ci-dessous.

- |  |  |
|--|--|
| <input type="checkbox"/> Coloured covers/<br>Couverture de couleur   | <input type="checkbox"/> Coloured pages/<br>Pages de couleur   |
| <input type="checkbox"/> Covers damaged/<br>Couverture endommagée  | <input type="checkbox"/> Pages damaged/<br>Pages endommagées   |
| <input type="checkbox"/> Covers restored and/or laminated/<br>Couverture restaurée et/ou pelliculée  | <input type="checkbox"/> Pages restored and/or laminated/<br>Pages restaurées et/ou pelliculées  |
| <input type="checkbox"/> Cover title missing/<br>Le titre de couverture manque   | <input checked="" type="checkbox"/> Pages discoloured, stained or foxed/<br>Pages décolorées, tachetées ou piquées   |
| <input type="checkbox"/> Coloured maps/<br>Cartes géographiques en couleur   | <input type="checkbox"/> Pages detached/<br>Pages détachées  |
| <input type="checkbox"/> Coloured ink (i.e. other than blue or black)/<br>Encre de couleur (i.e. autre que bleue ou noire)   | <input type="checkbox"/> Showthrough/<br>Transparence  |
| <input type="checkbox"/> Coloured plates and/or illustrations/<br>Planches et/ou illustrations en couleur  | <input type="checkbox"/> Quality of print varies/<br>Qualité inégale de l'impression   |
| <input type="checkbox"/> Bound with other material/<br>Relié avec d'autres documents   | <input type="checkbox"/> Includes supplementary material/<br>Comprend du matériel supplémentaire   |
| <input type="checkbox"/> Tight binding may cause shadows or distortion<br>along interior margin/<br>La reliure serrée peut causer de l'ombre ou de la<br>distorsion le long de la marge intérieure   | <input type="checkbox"/> Only edition available/<br>Seule édition disponible   |
| <input type="checkbox"/> Blank leaves added during restoration may<br>appear within the text. Whenever possible, these<br>have been omitted from filming/<br>Il se peut que certaines pages blanches ajoutées<br>lors d'une restauration apparaissent dans le texte,<br>mais, lorsque cela était possible, ces pages n'ont<br>pas été filmées. | <input type="checkbox"/> Pages wholly or partially obscured by errata<br>slips, tissues, etc., have been refilmed to<br>ensure the best possible image/<br>Les pages totalement ou partiellement<br>obscurcies par un feuillet d'errata, une pelure,<br>etc., ont été filmées à nouveau de façon à<br>obtenir la meilleure image possible. |
| <input checked="" type="checkbox"/> Additional comments:/ [Printed ephemera] 1 sheet (verso blank)<br>Commentaires supplémentaires:  |  |

This item is filmed at the reduction ratio checked below/  
Ce document est filmé au taux de réduction indiqué ci-dessous.

10X	12X	14X	16X	18X	20X	22X	24X	26X	28X	30X	32X
								✓			

The copy filmed here has been reproduced thanks to the generosity of:

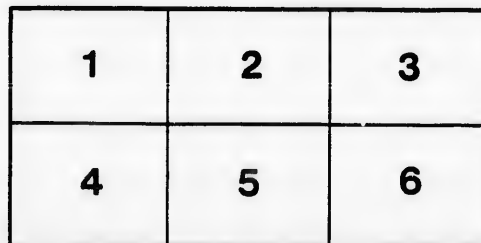
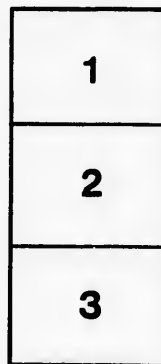
D. B. Weldon Library  
University of Western Ontario  
(Regional History Room)

The images appearing here are the best quality possible considering the condition and legibility of the original copy and in keeping with the filming contract specifications.

Original copies in printed paper covers are filmed beginning with the front cover and ending on the last page with a printed or illustrated impression, or the back cover when appropriate. All other original copies are filmed beginning on the first page with a printed or illustrated impression, and ending on the last page with a printed or illustrated impression.

The last recorded frame on each microfiche shall contain the symbol  $\rightarrow$  (meaning "CONTINUED"), or the symbol  $\nabla$  (meaning "END"), whichever applies.

Maps, plates, charts, etc., may be filmed at different reduction ratios. Those too large to be entirely included in one exposure are filmed beginning in the upper left hand corner, left to right and top to bottom, as many frames as required. The following diagrams illustrate the method:



L'exemplaire filmé fut reproduit grâce à la générosité de:

D. B. Weldon Library  
University of Western Ontario  
(Regional History Room)

Les images suivantes ont été reproduites avec la plus grande soin, compte tenu de la condition et de la netteté de l'exemplaire filmé, et en conformité avec les conditions du contrat de filmage.

Les exemplaires originaux dont la couverture en papier est imprimée sont filmés en commençant par le premier plat et en terminant soit par la dernière page qui comporte une empreinte d'impression ou d'illustration, soit par le second plat, selon le cas. Tous les autres exemplaires originaux sont filmés en commençant par la première page qui comporte une empreinte d'impression ou d'illustration et en terminant par la dernière page qui comporte une telle empreinte.

Un des symboles suivants apparaîtra sur la dernière image de chaque microfiche, selon le cas: le symbole  $\rightarrow$  signifie "A SUIVRE", le symbole  $\nabla$  signifie "FIN".

Les cartes, planches, tableaux, etc., peuvent être filmés à des taux de réduction différents. Lorsque le document est trop grand pour être reproduit en un seul cliché, il est filmé à partir de l'angle supérieur gauche, de gauche à droite, et de haut en bas, en prenant le nombre d'images nécessaire. Les diagrammes suivants illustrent la méthode.

# Holman's Opera House, London.

APRIL 13th, 1874.



of Boston, (organized 25 years), composed of the following artists:—

WILLIAM SCHULTZE, Violin.  
 CARL HAMM, Violin.  
 THOMAS RYAN, Viola and Clarinette.  
 EDWARD HEINDL, Viola and Flute.  
 RUDOLPH HENNIG, Violoncello.

Assisted by the distinguished Vocalist,

**Mrs. J. W. WESTON**

## Programme.

1. Overture. A night in Grenada, - - - - - Kreutzer
2. "Sognal," Italian Romance, - - - - - Schru

*Mrs. J. W. Weston.*

[TRANSLATION.]

Lisa, I dreamt that at last thou wert mine,  
 And the Kiss that I gave thee had stolen my heart;  
 Oh! that that dream might continue forever,  
 And no tyrant but Death had the power to part,  
 A dream is our love, a dream is our life,  
 Yet I'd die for thee, Lisa, so deep is my love;  
 And should death here have taken my heart from thee, Lisa,  
 Thou'lt find it above, dear, thou'lt find it above.

3. "La Remembrance," Solo for Flute, - - - - - Terschak

*Edward Heindl.*

4. Quartette in B flat, Op. 18, - - - - - Beethoven  
 Allegro—Andante.

5. Gnomon Kneque (sounds from the underground spirits), for  
 Clarinette, - - - - - Carl Baermann

*Thomas Ryan.*

6. "Amurys," air composed by Louis XIII. Arranged for Quintette. 2

## PART SECOND.

7. "Esmeralda," Gipsy Song, - - - - - Levey

*Mrs. J. W. Weston.*

Where is the little Gipsy's home? Under the spreading greenwood tree, Wherever she may roam, Where'er that tree may be,— Roaming the wide world o'er, Crossing the deep blue sea, She finds on every shore A home among the free. Volla, La Gitana, Esmeralda, Zingara.	The Gipsy is like the bird, A bird that sings in tree and bow'r; The Gipsy is like the bee, The bee that flits from flow'r to flow'r! She loves the sun and sky, She loves the song and dance, The groves of sunny Spain, The plains of La Belle France. Volla, La Gitana, Esmeralda, Zingara.
---	--

Oh, leave her like the bird,  
 To sing on ev'ry tree and bower;  
 Oh, leave her like the bee,  
 To flit from flow'r to flow'r.  
 Roaming the wide world o'er,  
 Crossing the deep blue sea,  
 She finds on ev'ry shore  
 A home among the free.  
 Volla, La Gitana, Esmeralda, Zingara.

8. Concerto Violoncello in A minor, - - - - - Goltnerman

*Rudolph Hennig.*

9. Scherzo, from the "Midsummer Night's Dream," arranged  
 for Quintette, by Carl Hamm, - - - - - Mendelssohn

PECK—How now, spirit! whither wander you?  
 FAIRY—Over hill, over dale,  
 Through bush, through brier,  
 Over park, over pale,  
 Through flood, through fire,  
 I do wander everywhere,  
 Swifter than the moon's sphere.

10. Solo for Violin, - - - - - Paganini

*Carl Hamm.*

11. English Song, "Little Maid of Aredee," - - - - - Arthur Sullivan  
 (Words by W. S. Gilbert.)

*Mrs. J. W. Weston.*

Little maid of Aredee Sat on Cousin Robin's knee— Thought, in face and form and limb, Nobody could equal him. He was rich, and she was fair, Truth they made a pretty pair. Happy little maiden she! Happy maid of Aredee!	Moments sped, as moments will, Rapidly enough—until, After, say, a month or two, Robin did as Robins do— Fickle as the month of May, Jilted her and run away. Wretched little maiden she, Dolful maid of Aredee.
---	---

To her little home she crept,  
 There she sat her down and wept;  
 Maiden wept as maidens will,  
 Grew so thin and pale and ill,  
 Till another came to woo,—  
 Then again the roses grew.  
 Happy little maiden she!  
 Happy maid of Aredee!

12. "Reiter Marsch," composed for Piano, op. 121. Arranged for  
 Quintette, by Carl Hamm, - - - - - Franz Schubert

GOD SAVE THE QUEEN.

CONCERT WILL BEGIN AT EIGHT O'CLOCK.

