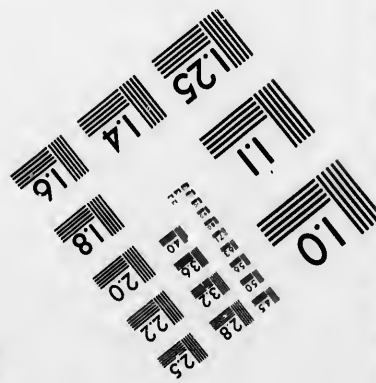
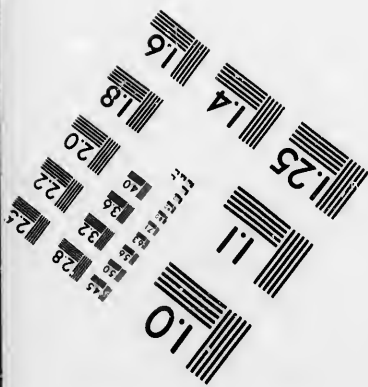
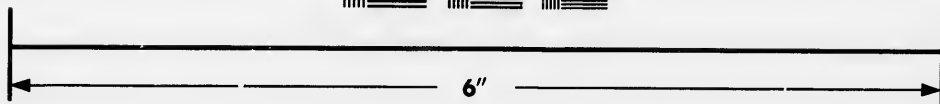
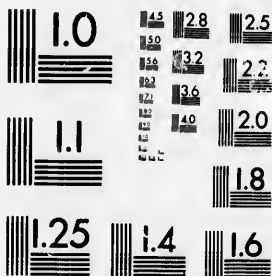


**IMAGE EVALUATION
TEST TARGET (MT-3)**



**Photographic
Sciences
Corporation**

23 WEST MAIN STREET
WEBSTER, N.Y. 14580
(716) 872-4503

1.5 2.0 2.5
2.8 3.2 3.6
4.0 4.5 5.0

**CIHM/ICMH
Microfiche
Series.**

**CIHM/ICMH
Collection de
microfiches.**



Canadian Institute for Historical Microreproductions / Institut canadien de microreproductions historiques

1.0
1.5
2.0

© 1986

Technical and Bibliographic Notes/Notes techniques et bibliographiques

The Institute has attempted to obtain the best original copy available for filming. Features of this copy which may be bibliographically unique, which may alter any of the images in the reproduction, or which may significantly change the usual method of filming, are checked below.

L'Institut a microfilmé le meilleur exemplaire qu'il lui a été possible de se procurer. Les détails de cet exemplaire qui sont peut-être uniques du point de vue bibliographique, qui peuvent modifier une image reproduite, ou qui peuvent exiger une modification dans la méthode normale de filmage sont indiqués ci-dessous.

- Coloured covers/
Couverture de couleur
- Covers damaged/
Couverture endommagée
- Covers restored and/or laminated/
Couverture restaurée et/ou pelliculée
- Cover title missing/
Le titre de couverture manque
- Coloured maps/
Cartes géographiques en couleur
- Coloured ink (i.e. other than blue or black)/
Encre de couleur (i.e. autre que bleue ou noire)
- Coloured plates and/or illustrations/
Planches et/ou illustrations en couleur
- Bound with other material/
Relié avec d'autres documents
- Tight binding may cause shadows or distortion along interior margin/
La reliure serrée peut causer de l'ombre ou de la distortion le long de la marge intérieure
- Blank leaves added during restoration may appear within the text. Whenever possible, these have been omitted from filming/
Il se peut que certaines pages blanches ajoutées lors d'une restauration apparaissent dans le texte, mais, lorsque cela était possible, ces pages n'ont pas été filmées.

- Coloured pages/
Pages de couleur
- Pages damaged/
Pages endommagées
- Pages restored and/or laminated/
Pages restaurées et/ou pelliculées
- Pages discoloured, stained or foxed/
Pages décolorées, tachetées ou piquées
- Pages detached/
Pages détachées
- Showthrough/
Transparence
- Quality of print varies/
Qualité inégale de l'impression
- Includes supplementary material/
Comprend du matériel supplémentaire
- Only edition available/
Seule édition disponible
- Pages wholly or partially obscured by errata slips, tissues, etc., have been refilmed to ensure the best possible image/
Les pages totalement ou partiellement obscurcies par un feuillet d'errata, une pelure, etc., ont été filmées à nouveau de façon à obtenir la meilleure image possible.

Additional comments:
Commentaires supplémentaires:

(PRINTED EPHEMERA) 1 SHEET (VERSO BLANK)
CREASES IN PAGE MAY CAUSE SLIGHT DISTORTION OF PRINT.

This item is filmed at the reduction ratio checked below/
Ce document est filmé au taux de réduction indiqué ci-dessous.

10X	14X	18X	22X	26X	30X
<input type="checkbox"/>	<input type="checkbox"/>	<input type="checkbox"/>	<input type="checkbox"/>	<input checked="" type="checkbox"/>	<input type="checkbox"/>
12X	16X	20X	24X	28X	32X

The copy filmed here has been reproduced thanks to the generosity of:

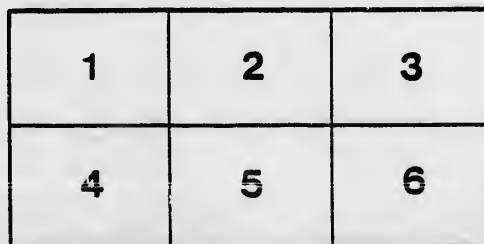
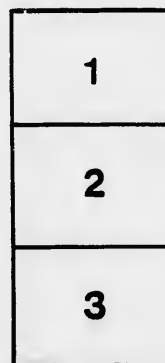
Archives of Ontario
Toronto

The images appearing here are the best quality possible considering the condition and legibility of the original copy and in keeping with the filming contract specifications.

Original copies in printed paper covers are filmed beginning with the front cover and ending on the last page with a printed or illustrated impression, or the back cover when appropriate. All other original copies are filmed beginning on the first page with a printed or illustrated impression, and ending on the last page with a printed or illustrated impression.

The last recorded frame on each microfiche sheet contains the symbol \rightarrow (meaning "CONTINUED"), or the symbol ∇ (meaning "END"), whichever applies.

Maps, plates, charts, etc., may be filmed at different reduction ratios. Those too large to be entirely included in one exposure are filmed beginning in the upper left hand corner, left to right and top to bottom, as many frames as required. The following diagrams illustrate the method:



L'exemplaire filmé fut reproduit grâce à la générosité de:

Archives of Ontario
Toronto

Les images suivantes ont été reproduites avec le plus grand soin, compte tenu de la condition et de la netteté de l'exemplaire filmé, et en conformité avec les conditions du contrat de filmage.

Les exemplaires originaux dont la couverture en papier est imprimée sont filmés en commençant par le premier plat et en terminant soit par la dernière page qui comporte une empreinte d'impression ou d'illustration, soit par le second plat, selon le cas. Tous les autres exemplaires originaux sont filmés en commençant par la première page qui comporte une empreinte d'impression ou d'illustration et en terminant par la dernière page qui comporte une telle empreinte.

Un des symboles suivants apparaîtra sur la dernière image de chaque microfiche, selon le cas: le symbole \rightarrow signifie "A SUIVRE", le symbole ∇ signifie "FIN".

Les cartes, planches, tableaux, etc., peuvent être filmés à des taux de réduction différents. Lorsque le document est trop grand pour être reproduit en un seul cliché, il est filmé à partir de l'angle supérieur gauche, de gauche à droite, et de haut en bas, en prenant le nombre d'images nécessaire. Les diagrammes suivants illustrent la méthode.

errata
to

pelure,
on à

THE FREEHOLD

Permanent Building and Savings Society,

TORONTO,

INCORPORATED APRIL, 1859, PURSUANT TO THE ACT OF THE PROVINCIAL LEGISLATURE,

9TH VICTORIA, CHAP. 90, AND AMENDMENTS.

Shares, \$100 each, payable either in Advance or by Monthly Instalments.

DIRECTORS.

WILLIAM McMASTER, Esq., PRESIDENT.

WILLIAM P. HOWLAND, Esq., M.P.P., VICE-PRESIDENT.

GEORGE MICHIE, Esq.

WILLIAM HENDERSON, Esq.

LAWRENCE HEYDEN, Esq.

JAMES AUSTIN, Esq.

ALEXANDER MURRAY, Esq.

JOHN EWART, Esq.

JOHN BOYD, Esq.

This Society is now in full operation, under the Management of the above-named Directors, who desire to draw the attention of the public to the advantages offered for the profitable employment of Capital either deposited with the Society, or invested in Stock, as it combines the best security with a high rate of interest, and is well calculated to supply the want so generally felt in Toronto of a central and reliable

SAVINGS BANK

Deposits of \$10 and upwards will be received, and interest allowed at the rate of 6 per cent. per annum.

Depositors may withdraw their money at any time, in accordance with the Rules of the Society.

Men of capital, who frequently have large sums remaining either entirely unproductive, or yielding but a small percentage, will readily understand the advantages offered them by this Society. The Directors, in organizing the Institution, were actuated, principally, by the desire of inducing habits of economy among the industrious classes, who are now invited to make the trial of what can be done towards providing for declining years and other contingencies in their families, by depositing a small portion of their earnings in the Society, which, with the interest allowed, will be found to accumulate much more rapidly than is generally imagined.

The Shares of the Society, being only \$100 each, present a favorable opportunity of investment for those desirous of securing a large permanent yearly income, removed from all the fluctuations of trade.

In thus presenting the claims of the Society to the public, the Directors feel justified in stating, that the safety of Investments and Deposits are placed beyond a doubt, being based on real estate security of the first class.

Further particulars may be learned on application at the Office,

Corner of King and Toronto Streets.

CHARLES ROBERTSON,

Secretary.

TORONTO, August, 1859.

