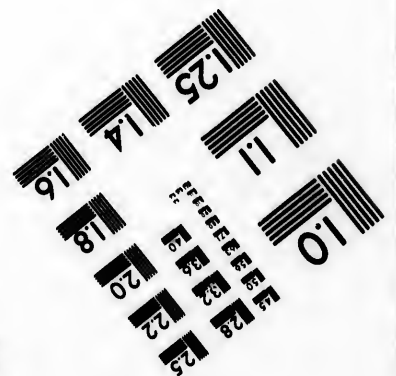
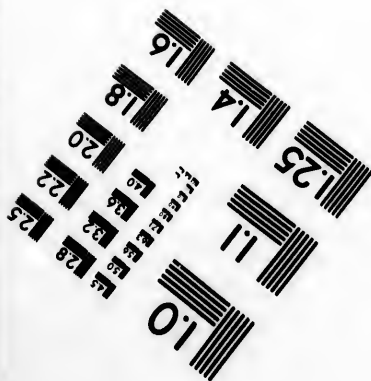
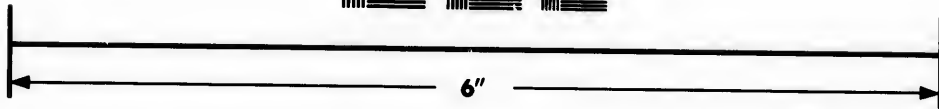
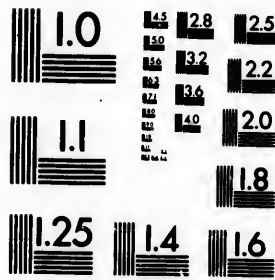


**IMAGE EVALUATION
TEST TARGET (MT-3)**



**Photographic
Sciences
Corporation**

23 WEST MAIN STREET
WEBSTER, N.Y. 14580
(716) 872-4503

**CIHM/ICMH
Microfiche
Series.**

**CIHM/ICMH
Collection de
microfiches.**



Canadian Institute for Historical Microreproductions / Institut canadien de microreproductions historiques

© 1983

The copy filmed here has been reproduced thanks to the generosity of:

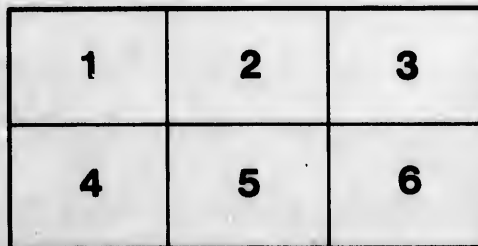
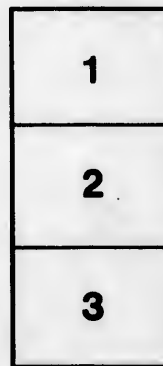
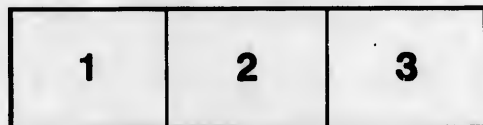
Library of the Public
Archives of Canada

The images appearing here are the best quality possible considering the condition and legibility of the original copy and in keeping with the filming contract specifications.

Original copies in printed paper covers are filmed beginning with the front cover and ending on the last page with a printed or illustrated impression, or the back cover when appropriate. All other original copies are filmed beginning on the first page with a printed or illustrated impression, and ending on the last page with a printed or illustrated impression.

The last recorded frame on each microfiche shall contain the symbol \rightarrow (meaning "CONTINUED"), or the symbol ∇ (meaning "END"), whichever applies.

Maps, plates, charts, etc., may be filmed at different reduction ratios. Those too large to be entirely included in one exposure are filmed beginning in the upper left hand corner, left to right and top to bottom, as many frames as required. The following diagrams illustrate the method:



L'exemplaire filmé fut reproduit grâce à la générosité de:

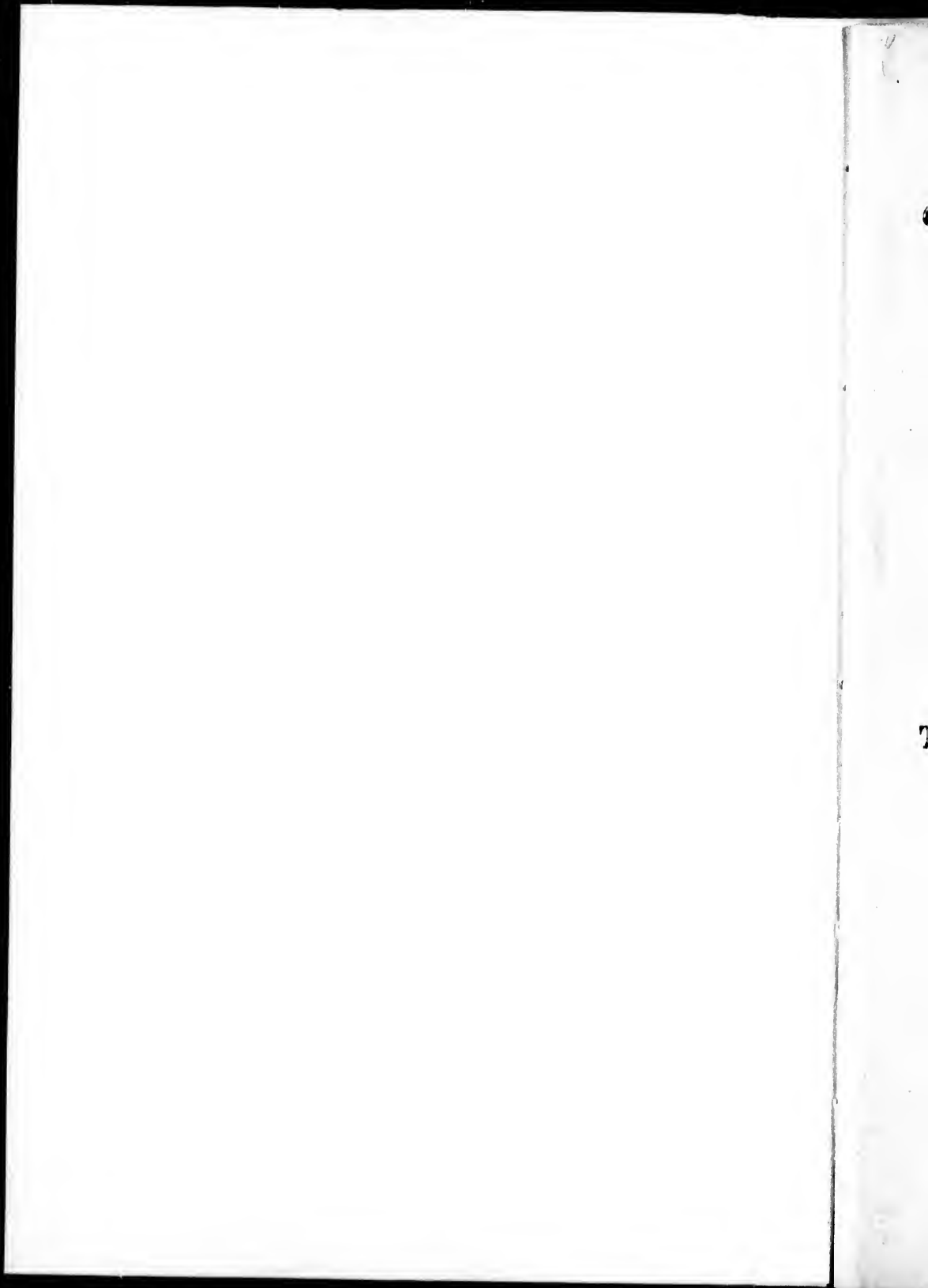
La bibliothèque des Archives
publiques du Canada

Les images suivantes ont été reproduites avec le plus grand soin, compte tenu de la condition et de la netteté de l'exemplaire filmé, et en conformité avec les conditions du contrat de filmage.

Les exemplaires originaux dont la couverture en papier est imprimée sont filmés en commençant par le premier plat et en terminant soit par la dernière page qui comporte une empreinte d'impression ou d'illustration, soit par le second plat, selon le cas. Tous les autres exemplaires originaux sont filmés en commençant par la première page qui comporte une empreinte d'impression ou d'illustration et en terminant par la dernière page qui comporte une telle empreinte.

Un des symboles suivants apparaîtra sur la dernière image de chaque microfiche, selon le cas: le symbole \rightarrow signifie "A SUIVRE", le symbole ∇ signifie "FIN".

Les cartes, planches, tableaux, etc., peuvent être filmés à des taux de réduction différents. Lorsque le document est trop grand pour être reproduit en un seul cliché, il est filmé à partir de l'angle supérieur gauche, de gauche à droite, et de haut en bas, en prenant le nombre d'images nécessaire. Les diagrammes suivants illustrent la méthode.



LIST OF PRIZES

FOR

The Provincial Industrial Exhibition,

TO BE HELD AT MONTREAL,

ON THURSDAY, THE 17th OCTOBER, 1850,

WITH A VIEW TO

THE COLLECTION AND SELECTION OF ARTICLES,

THE PRODUCTION OF CANADA,

FOR TRANSMISSION TO THE GREAT EXHIBITION

OF

THE INDUSTRY OF ALL NATIONS,

TO BE HELD IN LONDON IN 1851.



Toronto :

PRINTED BY LOVELL AND GIBSON, FRONT STREET.

1850.

1850
(18)

91684

LIST OF PRIZES

FOR

THE PROVINCIAL INDUSTRIAL EXHIBITION,

TO BE HELD AT

MONTREAL, 17TH OCTOBER, 1850.

COMMISSIONERS,

Appointed under the Great Seal of the Province.

The Hon. Francis Hincks.
The Hon. E. P. Taché.
The Hon. Peter McGill.
The Hon. R. E. Caron.
The Hon. A. N. Morin.
The Hon. Adam Fergusson.
The Hon. Henry Sherwood.
Joseph C. Morrison, Esq., M. P. P.
B. C. A. Gogy, Esq., M. P. P.
George E. Cartier, Esq., M. P. P.
The Mayor of Montreal.

The Mayor of Toronto.
Thomas E. Campbell, Esq.
William E. Logan, Esq.
Moses Judah Hays, Esq.
Franklin Jackes, Esq.
Professor Croft.
E. W. Thompson, Esq.
John Young, Esq.
Captain Lefroy, R. A., F. R. S.
Stuart McKechnie, Esq.
Thomas C. Keefer, Esq.

FRED. WM. CUMBERLAND, Esq., Secretary.

EXECUTIVE COMMITTEE,

Appointed by the Commissioners.

E. R. Fabre, Esq., Mayor of Montreal.
John Ostell, Esq.
C. W. Meakins, Esq.
John Fletcher, Esq.
Henry Lyman, Esq.

W. H. Fleet, Esq.
William Bristow, Esq.
C. P. Ladd, Esq.
Wm. Spiers, Esq.
W. A. Townsend, Esq.

JOHN LEEING, Esq., Secretary.

The Commissioners are *ex officio* Members of the Executive Committee.

LOCAL COMMISSIONERS.

The Wardens or Mayors of all Counties,
Cities and Incorporated Towns.

The President and Secretary of each
County Agricultural Association, and
the President and Secretary of each
Mechanics' Institute throughout the
Province.

CONDITIONS AND REGULATIONS.

1. The Exhibition will be held at Montreal, on Thursday, the 17th day of October, and all articles intended for Exhibition must be addressed to JOHN LEEING, Esq., the Secretary of the Executive Committee, and must be delivered at Montreal, on or before Saturday, the twelfth day of October, at the risk of the Exhibitor, and without charge to the Commissioners. A sum, not exceeding in the whole £100 cy., will, however, be appropriated by the Commissioners as a fund for assisting the Exhibitors in defraying the cost of transmission to Montreal of such articles as may be specially recommended by the Judges as appearing to have a marked claim, arising from their importance,—the skill and ingenuity evinced by them,—their bulk or weight,—the distance they may have been forwarded for Exhibition,—or, lastly, as being *bonâ fide* the property of, and exhibited by, working mechanics.

2. Articles not intended for transmission to England may be forwarded, and will be received for Exhibition at Montreal; but no such articles can obtain Provincial Prizes.

3. All articles forwarded for Exhibition must have been produced or manufactured in Canada; and Exhibitors must be prepared with proof thereof, should the same be required by the Commissioners.

4. All articles forwarded for Exhibition must be accompanied by a descriptive document, of the form annexed:—

Exhibitor's name.	Residence.	Designation, description and object of article.	Where produced or manufact'd.	Price at place of production.	Prize for which entered, naming Class & number, if enumerated

5. Articles exhibited will be known to the Judges only by their recorded number. No mark or brand of Maker's or Exhibitor's name will be permitted to appear until after the award of Prizes has been made.

6. No Prizes will be awarded in any Class unless the articles exhibited are considered by the Judges of superior excellence, or of sufficient merit to justify their transmission to England.

7. Although the Commissioners anticipate ample space for the reception and arrangement of all articles forwarded for Exhibition, they reserve to themselves the right of rejection in all Classes.

8. All articles to which Prizes shall have been awarded, in whatever Class, will be held liable to transmission to England, for Exhibition at the Imperial Industrial Exposition; but the Commissioners do not bind themselves to transmit such articles without exception.

9. All articles of *a perishable nature*, to which *Prizes exceeding their value* shall have been awarded, shall thereupon become the property of the Commission.

10. A special Honorary Diploma, suitable for the occasion, will be presented by the Commissioners to all parties obtaining First Prizes.

11. All Prizes will be paid with the utmost possible promptitude.

12. The Commissioners will set apart a sum of £50 currency, exclusive of the amount apportioned in like manner to Class D, Section No. 1, to be awarded, at the discretion of the Judges, to such articles of merit as are unenumerated in the Prize List. Such articles to be then subject to the conditions of Clause No. 8.

13. The Judges of the various Classes will be appointed by the Commissioners, on the recommendation of various Incorporated Societies (in each section of the Province) connected with Agriculture, Manufactures, and the Mechanical Arts: such Judges in no case to be Exhibitors in the Class to which they are appointed.

14. Prize articles selected for transmission to the Imperial Exposition will be packed, warehoused, insured and shipped for England at the expense of the Commission.

15. An accredited Agent will be employed by the Commission to receive, warehouse, insure and deliver all articles to the Imperial Exposition ; the whole at the expense of the Commission.

16. The said Agent shall also, at the option of the Exhibitors of articles to which Imperial Prizes may be adjudged, receive and transmit the said Prizes direct to the Exhibitors ; or such Prizes may be made payable by the Imperial to the Provincial Commissioners, to be by them immediately transferred to the successful competitors.

17. All the responsibility of the Commission as regards the security of articles to be exhibited shall cease on the delivery thereof by the Agent aforesaid at the Great Exposition ; but the Commissioners will avail themselves as far as possible of the privilege of arranging the articles in the places allotted to them by the Imperial Authorities ; and the Commissioners will further provide (after the closing of the said Exposition) for the re-packing, removal and warehousing for a limited period (not exceeding six months) of articles until then not disposed of, to be held subject to the order of the Exhibitor.

18. At the option of the Exhibitors, the aforesaid Agent shall act as General Agent for the sale of articles intended to be offered for sale in England ; receiving the usual commission thereupon from the proprietor.

The Commissioners would especially impress upon Exhibitors the importance of affixing the reasonably remunerative price at which each article can be produced at the place of production ; it being the intention of the Commissioners to avail themselves of such means as may be at their command, to attract Commercial attention in England to those products which may be advantageously exported from this Colony.

The Commissioners desire also to bring to the notice of Exhibitors, the munificent donation by His Excellency the Governor General, of a sum of £100, to be awarded in England by the Imperial Commissioners, in Prizes, to such articles of Canadian production as may appear most deserving thereof.

The Commissioners having entered into negotiations with the proprietors of steam vessels on the River St. Lawrence and

Lake Ontario, it is probable that the freight charges on articles transmitted to the Exhibition will be considerably reduced.

The Commissioners think it proper to repeat and impress upon the Public, the announcement made by the Imperial Authorities, to the effect that a Provincial Commission having been appointed, it is expected that all articles forwarded for Exhibition from Canada will be transmitted through that Commission, without whose express sanction and authority no article will be received in London. It is absolutely necessary therefore that all parties proposing to exhibit in London, should make the Commissioners the medium of transmission, whether or not the article is enumerated in the Provincial Prize List.

Class A.
M I N E R A L S .

ORES, METALS, EARTHS, GLASS, PORCELAIN, POTTERY, STONE, AND MINERAL
SUBSTANCES FOR BUILDING.

NO.	OBJECT.	PRIZE.
1	Iron, Magnetic	A sum not exceeding £50 will be apportioned, at the discretion of the Judges, in Prizes to this Class, from Nos. 1 to 69, inclusive.
2	Do. Specular	
3	Do. Bog	
4	Do. Titaniferous.....	
5	Zinc, Sulphurets	
6	Lead, Sulphurets	
7	Copper, Native	
8	Do. Sulphurets, &c.....	
9	Do. Smelted	
10	Nickel, Sulphuret	
11	Silver, Native.....	
12	Gold, Native in Gravel.....	
13	Do. Native in Vein.....	
14	Uranium.....	
15	Chromium	
16	Cobalt	
17	Manganese, Bog	
18	Iron Pyrites	
19	Dolomite	
20	Magnesite.....	
21	Barytes	
22	Iron Ochre.....	
23	Talcose Slate.....	
24	Soapstone	
25	Serpentine	
26	Ferruginous Clay	
27	Lithographic Stone	
28	Agates	
29	Jasper.....	
30	Labradorite	
31	Sunstone.....	
32	Hyacinths	
33	Amethysts	
34	Ribboned Chert (for Cameos).....	
35	Jet	
36	White Quartz Sandstone	
37	Pitchstone, Basalt.....	
38	Asbestos	
39	Sandstone	
40	Plumbago	
41	Phosphate of Lime	
42	Gypsum	
43	Shell Marl	
44	Millstones	
45	Grindstones	
46	Whetstones and Hones.....	
47	Canadian Tripoli	

CLASS A.—MINERALS—Continued.

NO.	OBJECT.	PRIZES.		
		First.	Second.	
48	Granite, rough or dressed	See foregoing remarks.		
49	Pseudo Granite.....			
50	Sandstone, 8 ins. cubic, dressed			
51	Calcareous Sandstone, 8 ins. cubic, dressed			
52	Limestone, 8 ins. cubic, dressed.....			
53	Marble, white			
54	Do. black.....			
55	Do. brown			
56	Do. grey and mottled.....			
57	Do. variegated white and green			
58	Do. verd antique.....			
59	Do. serpentine.....			
60	Lime, common			
61	Do. Magnesian			
62	Do. Hydraulic			
63	Cement, exhibited in the block			
64	Statuary Plaster, exhibited in the block			
65	Plaster, (commonly called Plaster of Paris) for architectural enrichment, exhibited in the block			
66	Peat			
67	Petroleum			
68	Naphtha.....			
69	Asphalt			
70	Potash.....not less than 1 cwt.		2 10 0	1 10 0
71	Pearl Ash		2 10 0	1 10 0
72	Glass, Window, of sorts		2 10 0	
73	Do. Bottle, of sorts		2 10 0	
74	Do. Ornamental, Cut		2 10 0	
75	Moulding Sand			
76	Fuller's Earth			
77	Pottery,12 samples	2 10 0		
78	Draining Tiles, do.	2 10 0	1 0 0	
79	Ornamental Tiles, do.	2 10 0		
80	Tiles for roofing, of sorts, do.	1 10 0		
81	Tiles perforated for Kilns, of sorts,..... do.	2 0 0		
82	Tiles for paving, of sorts,..... do.	2 10 0		
83	Bricks, red,..... do.	2 10 0		
84	Do. white,..... do.	2 10 0		
85	Do. glazed, 6 do.	2 10 0		
86	Stoneware, assortment of,.....12 do.	1 10 0	1 0 0	
87	Slates for roofing, assortment,12 do.	1 10 0		
88	Flag Stones	2 0 0		

The above list has been compiled from an elaborate and valuable Catalogue of the "Economic Minerals, &c., of Canada," prepared by W. E. Logan, Esq., Provincial Geologist, indicating the localities where each description can be found. This Catalogue can be procured on application to the Secretary of the Commission at Toronto, or the Secretary of the Executive Committee at Montreal.

Class B.
AGRICULTURAL PRODUCE, &c.

CEREALS, PULSES, OIL SEEDS, FRUITS, STARCH, SUGAR, GUMS, RESIN, DYES
AND COLOURS, TANNING MATERIALS, WOODS, ETC., ETC.

Section No. 1.

NO.	OBJECT.	QUANTITY.	PRIZES.	
			First.	Second.
			£ s. d.	£ s. d.
1	Fall Wheat,—(3rd Prize, £6 5s.)	25 bushels.	25 0 0	12 10 0
2	Spring Wheat,—(3rd Prize, £6 5s.)	25 do.	25 0 0	12 10 0
3	Barley	5 do.	3 10 0	2 0 0
4	Spring Rye	5 do.	2 10 0	1 10 0
5	Oats	5 do.	2 10 0	1 10 0
6	Indian Corn, in the ear	5 do.	2 10 0	1 10 0
7	Peas	5 do.	3 0 0	2 0 0
8	Buckwheat	5 do.	2 0 0	1 10 0
9	Beans	3 do.	2 0 0	1 5 0
10	Timothy Seed	2 do.	2 0 0	1 5 0
11	Clover Seed	2 do.	4 0 0	2 10 0
12	Hemp Seed	2 do.	2 0 0	1 5 0
13	Flax Seed	4 do.	5 0 0	3 0 0
14	Swedish Turnip Seed	10 pounds	1 0 0	
15	Mustard Seed	10 do.	1 0 0	
16	Coffee Vetch, or Canadiana Coffee (commonly called Canadian Coffee) in berry	20 do.	2 10 0	1 10 0
17	Hops, Pocket	not less than $\frac{3}{4}$ cwt.	5 0 0	3 0 0
18	Rice, wild	50 pounds	5 0 0	3 0 0
19	Hemp	56 do.	2 10 0	1 10 0
20	Flax	56 do.	2 10 0	1 10 0
21	Barrel of Flour, best and most neatly packed, —(3d Prize, £2)		5 0 0	3 10 0
22	Barrel of Indian Meal, best and most neatly packed,—(3rd Prize, £1)		3 0 0	2 0 0
23	Barrel of Oatmeal, best and most neatly packed, —(3d Prize, £1)		3 0 0	2 0 0
24	Half Barrel of Buckwheat Meal, best and most neatly packed		3 0 0	1 10 0
25	Ship Biscuits	50 pounds.	1 10 0	1 0 0
26	Soda Biscuits	50 do.	2 0 0	1 10 0
27	Crackers	50 pounds	2 0 0	
28	Sugar, Maple	56 do.	5 0 0	3 0 0
29	Do. Do. double refined	10 do.	2 10 0	1 10 0
30	Do. Beet	30 do.	2 10 0	1 10 0
31	Do. Corn	30 do.	2 10 0	1 10 0
32	Sugar of Indian Manufacture	30 do.	2 10 0	1 10 0
33	Starch	20 do.	2 10 0	1 10 0
34	Pitch	56 do.	2 0 0	1 5 0
35	Resin	10 do.	2 0 0	1 5 0
36	Balsam	5 do.	2 10 0	1 5 0
37	Gums	10 do.	2 10 0	1 10 0
38	Dried Apples	barrel	2 10 0	1 10 0
39	Dried Peaches	do.	2 10 0	1 10 0
40	Fresh Apples, if warranted to keep	do.	2 10 0	1 10 0

CLASS B.—SECTION No. 1—Continued.

NO.	OBJECT.	QUANTITY.	PRIZES.	
			First.	Second.
			£ s. d.	£ s. d.
41	Pumpkin, Squash or Gourd, warranted to keep sound	2 0 0	1 0 0
42	Corn Brooms	1 dozen.	2 0 0	1 5 0
43	Do. Whisks	1 do.	1 10 0	1 0 0
44	Do. Brush, manufactured, in bundle	15 pounds.	1 10 0	0 15 0
45	Do. Brush in stalk, bundle	15 do.	1 5 0	0 10 0
46	Dye stuffs, best assortment, each sample—(3rd Prize £2)	5 do.	5 0 0	3 0 0
47	Tanning materials, best assortment, exhibited in successive stages of preparation, each sample	5 do.	5 0 0	3 0 0
48	Medicinal substances, best assortment	3 0 0	2 0 0
49	Dried plants, collection	2 10 0	1 10 0
50	Tobacco	3 0 0	1 10 0
51	Oils, Vegetable, best assortment, in clear glass bottles, pint samples	3 0 0	2 0 0

Section No. 2.

Best and largest specimen of the following Canadian woods, in planks of six feet in length, not exceeding two inches in thickness, planed on one side, and may be polished (without varnish) on the other.

NO.	OBJECT.	QUANTITY.	PRIZE.
			£ s. d.
1	Black Walnut	6 ft. plank	2 0 0
2	White Oak	6 do.	2 0 0
3	Hard Maple (<i>Sugar Maple</i>)	6 do.	2 0 0
4	Soft Maple	6 do.	2 0 0
5	Curled Maple	6 do.	2 0 0
6	Bird's Eye Maple	6 do.	2 0 0
7	Hickory	6 do.	2 0 0
8	Chestnut	6 do.	2 0 0
9	Cherry	6 do.	2 0 0
10	Iron Wood	6 do.	2 0 0
11	Red Cedar	6 do.	2 0 0
12	Bass Wood dried, as White-wood	6 do.	2 0 0
13	Tamarack	6 do.	2 0 0
14	Locust	6 do.	2 0 0
15	Ash	6 do.	2 0 0
16	Pine	6 do.	1 0 0
17	Beech	6 do.	1 0 0
18	Black Birch	6 do.	1 0 0
19	White Cedar	6 do.	1 0 0
20	Balsam Fir	6 do.	1 0 0
21	Rock Elm	6 do.	1 0 0
22	Best Pine Shingles, for roofing	2 bundles	1 0 0
23	Do. Barrel Staves of sorts	12 samples	1 0 0
Largest and best Veneers mounted and polished, viz.:			
24	Black Walnut Veneer	3 0 0
25	Curled Maple Veneer	3 0 0
26	Bird's Eye Maple Veneer	3 0 0

*Butter nut
Horn lock.
The Swamp or Water Elm.*

Section No. 3.

NO.	OBJECT.	QUANTITY.	PRIZE.		
			£	s.	d.
1	Black Walnut Drawing-Room Furniture.....	set	25	0	0
2	Do. do. Curled Maple.....	set	25	0	0
3	Best single sample of Cabinet Work in Black Walnut, (Second Prize £5 10s).....		10	0	0
4	Best Centre Table.....		15	0	0
5	Best Dining ditto.....		7	0	0
6	Best Arm or Easy Chair.....		2	10	0
7	Best Sofa.....		5	0	0
8	Best Dining Room Chairs.....	set of six	6	0	0
9	Best Ottoman.....		2	10	0

The above samples of Furniture should exhibit beauty of design and material, and excellence of workmanship.

Class C.

ANIMAL PRODUCTIONS.

PREPARATIONS FOR FOOD, OILS, LEATHER, WOOL, HAIR, BONE, ETC., ETC.,

NO.	OBJECT.	QUANTITY.	PRIZES.		
			First.	Second.	
			£	s.	d.
1	Beef.....	barrel	4	0	0
2	Pork.....	do.	5	0	0
3	Hams.....	best six	5	0	0
4	Bacon.....	best 2 sides	3	0	0
5	Honey in the Comb.....	20 pounds	3	10	0
6	Do. prepared.....	20 do.	3	10	0
7	Butter.....	firkin	5	0	0
8	Cheese.....	not less than	5	0	0
9	Lard.....	56 do.	3	0	0
10	Candles, Tallow, of sorts.....	samples of	4	0	0
11	Do. Composition.....	6 do.	1	10	0
12	Do. Wax.....	6 do.	2	10	0
13	Soaps, fancy, assorted.....	10 do.	2	10	0
14	Do. fine and common, of sorts.....	10 each	1	10	0
15	Bees' Wax.....	20 pounds	2	0	0
16	Glue.....	10 do.	2	10	0
17	Wool, Fleeces of.....	No. 5	5	0	0
18	Do. combed.....		2	10	0
19	Leather, Sole.....	two sides	2	10	0
20	Do. Upper.....	do.	2	10	0
21	Do. Patent, white and black.....	2 skins each	3	0	0
22	Do. Calf-skins, dressed.....	5 in number	5	0	0
23	Do. Saddle, Hog-skin and skirting.....	two sides	2	10	0
24	Do. Harness.....	do.	2	10	0

CLASS C.—ANIMAL PRODUCTIONS—Continued.

NO.	OBJECT.	QUANTITY.	PRIZES.					
			First.		Second.			
			£	s.	d.	£	s.	d.
25	Fancy Leathers, of sorts, prepared for book-binding, and other purposes, best assortment	3	0	0	2	0	0
26	Oils, Animal, best assortment, pint samples, in clear glass bottles	3	0	0	2	0	0
27	Oils, Fish, best assortment, pint samples	3	0	0	2	0	0
28	White Fish, best pickled,.....	half barrel	2	0	0			
29	Salmon Trout, best pickled,.....	do.	1	10	0			
30	Lake Herring, best pickled,.....	do.	1	10	0			
31	Lake Salmon, best pickled,	do.	2	0	0			
32	Salmon, salt water,	do.	1	10	0			
33	Mackerel, salt water,.....	do.	1	10	0			
34	Herring, salt water,.....	do.	1	10	0			
35	Cod, dried,.....	1 cwt.	2	0	0			
36	Capeling, dried,.....	$\frac{1}{4}$ cwt.	1	0	0			
37	Salmon, smoked,	$\frac{1}{4}$ cwt.	1	0	0			
38	Best samples of Horn, selected for manufacture	2	0	0			
39	Horn-work manufactured, best assortment.....	2	10	0	1	5	0
40	Animals stuffed, or prepared for stuffing	collection	5	0	0			
41	Bird's do. do. do.....	do.	5	0	0			
42	Fish do. do. do.....	do.	3	0	0			
43	Insects, methodically arranged,	do.	3	0	0			
44	Shells,.....	do.	2	10	0			
45	Pairs of Horns, of sorts,	2	10	0			
46	Furs and Skins,.....	collection	5	0	0			
47	Ladies' Furs, suit of,.....	5	0	0	3	0	0
48	Pairs of Gauntlets, of sorts,.....	collection	3	0	0	2	0	0
49	Fur Caps, of sorts,.....	2	10	0	1	10	0
50	Sleigh Robes, of sorts	5	0	0	3	0	0

Class D.
MACHINERY.

Section No. 1.

NO.	OBJECT.	PRIZES.
1	<i>Prime Movers</i> :—As Boilers and Furnaces for generating Steam, Steam Engines, Water-wheels and other Hydraulic Movers, Windmills, other Engines for generating Power, &c., or models thereof.....	A sum not exceeding £75, will be placed at the disposal of the Judges of this Class, for distribution, at their discretion, amongst such articles of merit as are not enumerated in the special List.
2	<i>Separate parts of Mechanism and Gearing</i> :—As Toothed Wheels, Link work, Belts, Couplings, Contrivances for modifying motion, for reversing and stopping, and for the government and self action of machinery, &c. Specimens of perfection in workmanship, such as Straight Edges, Flat Surfaces, Screws, Spheres, &c., or Models in metal of such contrivances.....	
3	<i>Machines for raising and moving bodies</i> :—For raising water and other liquids, as Pumps, Fire Engines, Hydraulic Rams, &c. For raising and moving weights and producing pressure.—Such as Crabs, Cranes, Travellers, Screw Jacks, Hydraulic Presses, Pile Drivers, &c. Machinery for the the Railway system, as Locomotives, Springs, Buffers, Axles, Wheels, &c., or, generally, models in metal thereof..	
4	Machines used in the manufacture of metals, as Lathes, Machines for Planing, Drilling, Boring, Slotting, Shearing, Riveting, &c., &c., or Models in metal thereof.....	
5	Fire Engine	20 0 0 10 0 0
6	Garden Engine	3 0 0 1 10 0
7	Pump, or best apparatus for raising water.....	5 0 0 2 10 0
8	Best Model of a simple and efficient Saw Mill for Water Power	5 0 0 3 0 0
9	Best model exhibiting an approved mode of raising and removing Buildings	5 0 0 3 0 0
10	Best Model of a Building Crane	2 10 0 1 10 0
11	Best Model of a Stump Extractor	2 10 0 1 10 0
12	Best Model of Hot Air Furnace and apparatus for heating dwellings	3 0 0
13	Best Turning Tathe for metal.	7 10 0 5 0 0
14	Best do. do. for wood.....	6 0 0 4 0 0
15	Best Balance Scales	3 0 0 1 10 0
16	Best Platform do. for 10 cwt.	5 0 0 2 10 0
17	Best do. do. for 20 cwt.	6 0 0 3 0 0
18	Best Ice Plough.....	1 0 0
19	Best Copying Press	2 10 0
20	Best Nail Cutting Machine	7 10 0
21	Best Screw do. do.	10 0 0
22	Best Candle do. do.	5 0 0
23	Best Model of Brick-making Machine	5 0 0

NO.

1
2
3
4
5
6
7
8
9
10
11
12
13
14
15
16
17
18
19
20
21
22
23
24
25
26
27
28
29
30
31
32
33
34
35
36
37
38
39

CLASS D.—MACHINERY—Continued.

Manufactures in Metal.

NO.	OBJECT.	PRIZES.			
		First.		Second.	
		£	s. d.	£	s. d.
1	Cast ornamental Iron work, Canadian metal.....	3	0 0	2	0 0
2	Ornamental Iron work from the hammer, Canadian metal	3	0 0	2	0 0
3	Manufactured Copper—Canadian metal.....	3	0 0		
4	Nails, Copper, assortment.....10 pounds	2	10 0		
5	Do. Iron cut, assortment.....20 do.	1	0 0		
6	Do. do. Wrought do.20 do.	2	0 0		
7	Screws, Iron, of sorts.....each $\frac{1}{2}$ gross	2	10 0		
8	Do. Wood do.each $\frac{1}{2}$ gross	2	10 0		
9	Augers, $\frac{1}{2}$ inch to 2 inches.....set	2	10 0		
10	Earth Auger, fitted complete.....	1	0 0		
11	Chopping Axes, Canadian pattern, fitted with helve, best 3	3	0 0	2	0 0
12	Do. do. English pattern, do. do.best 3	3	0 0	2	0 0
13	Broad Axe, fitted complete.....2 in number	1	10 0		
14	Edge Tools, fitted.....12 samples	3	0 0	2	0 0
15	Cutlery, assortment.....	2	0 0		
16	Bench Planes, assortment.....6 samples	2	0 0		
17	Moulding Planes, do6 do	2	10 0		
18	Coopers' Tools.....set	1	10 0	1	0 0
19	Wool Cards.....set	1	10 0		
20	Weavers' Reeds.....	1	0 0		
21	Cooking Stove, with Tin Furniture.....	3	10 0	2	0 0
22	Do. do. Copper do	5	0 0	2	10 0
23	Canadian Stove, double.....	3	0 0		
24	Do. do. single.....	3	0 0		
25	Register Grates.....	5	0 0	2	10 0
26	Grate Fenders.....	3	0 0	1	10 0
27	Parlour Stove.....	3	0 0	1	10 0
28	Blacksmiths' Bellows.....	2	0 0		
29	Rifle.....	2	10 0	1	0 0
30	Fire Arms, of sorts.....	2	10 0	1	0 0
31	Fire-proof Safe.....	5	0 0	1	0 0
32	Clock, superior.....	5	0 0	2	10 0
33	Do. common, (selling price under £2).....	2	10 0		
34	Church Bell, not less than 40 pounds.....	5	0 0		
35	Printing Type, assortment.....	5	0 0	3	0 0
36	Astronomical or Surveying Instruments.....	7	10 0		
37	Mathematical Instruments, set.....	5	0 0		
38	Surgical Instruments, assortment.....	3	10 0		
39	Dental do. do.	3	10 0		

0 0
10 0
10 0

0 0

0 0
10 0
10 0
10 0
0 0

0 0
0 0
10 0
10 0
0 0

CLASS D.—MACHINERY—*Continued.**Farming Implements, &c.*

NO.	OBJECT.	PRIZES.	
		First.	Second.
		£ s. d.	£ s. d.
1	Best Machine for Cutting Roots for Stock.....	2 0 0	1 0 0
2	Steaming Apparatus for Farm purposes.....	5 0 0	2 10 0
3	Best Light Plough.....	2 10 0	1 10 0
4	Best Subsoil Plough.....	2 10 0	1 10 0
5	Best pair Harrows.....	2 10 0	1 10 0
6	Best Straw or Chaff Cutter.....	2 10 0	1 10 0
7	Best Reaping Machine.....	7 10 0	5 0 0
8	Best Thrashing Machine.....	7 10 0	5 0 0
9	Best Corn and Cob Crusher... ..	2 10 0	1 10 0
10	Best Corn Sheller.....	2 10 0	1 10 0
11	Best Clover Machine.....	2 10 0	1 10 0
12	Best Fanning Mill or Cribble.....	2 10 0	1 10 0
13	Best Portable Grist Mill.. ..	5 0 0	2 10 0
14	Best Smut Machine.....	2 0 0	1 0 0
15	Best Two Grain Cradles, mounted.....	2 0 0	1 0 0
16	Best Hay Forks, $\frac{1}{2}$ dozen.....	1 5 0	0 15 0
17	Best Manure Forks, $\frac{1}{2}$ dozen	1 5 0	0 15 0
18	Best Scythe Snaths.....	1 5 0	0 15 0
19	Grain Shovels, wood	1 5 0	0 15 0
20	Churn.....	1 5 0	0 15 0

Specimens of Mechanical Skill,

(NOT ENTERED FOR OTHER ENUMERATED PRIZES.)

NO.	OBJECT.	PRIZES.	
		First.	Second.
		£ s. d.	£ s. d.
1	Dentists' work.....	5 0 0	2 10 0
2	Goldsmiths' work.....	5 0 0	2 10 0
3	Silversmiths' work.....	4 0 0	2 10 0
4	Whitesmiths' work.....	2 10 0	1 10 0
5	Blacksmiths' work.....	2 10 0	1 10 0
6	Locksmiths' work.....	2 10 0	1 10 0
7	Coopers' work.....	2 10 0	1 10 0
8	Wheelwrights' works.....	2 10 0	1 10 0
9	Tin or Coppersmiths' work.....	2 10 0	1 10 0

The specimens exhibited in this Class should, as far as possible, be complete subjects, evidencing their use, and not separate parts of an incomplete subject.

Class C.

WOOLLEN, WORSTED, LINEN, COTTON, PAPER, AND OTHER
MANUFACTURES.

NO.	OBJECT.	QUANTITY.	PRIZES.					
			First.		Second.			
			£	s.	d.	£	s.	d.
1	Broad Cloths, Canadian Wool	12 yds.	4	0	0	2	0	0
2	Tweed Cloth	12 yds.	4	0	0	2	0	0
3	Winter Tweed	12 yds.	4	0	0	2	0	0
4	Fuller's Cloth, not factory	12 yds.	2	10	0	1	0	0
5	Canadian Grey Cloth	12 yds.	3	0	0	1	10	0
6	Satinett	12 yds.	2	10	0	1	0	0
7	Bear-skin Cloth	12 yds.	2	10	0	1	0	0
8	Shawls, not factory	best.	2	0	0	1	5	0
9	Woollen Plaids in Checks (for women's wear)	smpls. 6 yds	2	10	0			
10	Flannel	12 yds.	2	10	0	1	10	0
11	Flannel, not factory	12 yds.	2	0	0	1	5	0
12	Collar Check	12 yds.	2	0	0			
13	Blankets	best pair.	5	0	0	3	0	0
14	Blankets, Horse	best pair.	1	10	0	1	0	0
15	Counterpanes	two.	1	10	0	1	0	0
16	Woollen Carpeting	12 yds.	3	0	0	1	10	0
17	Stocking Yarn, in colours and white samples...	smpls. 3 lb.	1	10	0			
18	Cotton Goods	assortment.	5	0	0	3	0	0
19	Linen Goods	do.	5	0	0	3	0	0
20	Linen Bags, Canadian Flax	six.	1	10	0			
21	Worsted Manufactures	6 lbs.	1	10	0			
22	Comforters	sample.	1	10	0			
23	Fringes and Tassels	assortment.	1	10	0			
24	Roller-girth and Brace-web	12 yds.	1	10	0	1	0	0
25	Oil Cloth, Flooring	12 yds.	3	0	0	2	0	0
26	Do. Table	6 yds.	3	0	0	2	0	0
27	Do. for clothing	6 yds.	3	0	0			
28	Do. Tarpauline, &c.	12 yds.	3	0	0			
29	India Rubber Cloth or other fabric	12 yds.	3	10	0			
30	Matting, Mats, Hemp	6 yds.	1	10	0			
31	Hemp Cordage, not less than	3 samples.	2	10	0	1	10	0
32	Flax Cordage	do. do.	2	10	0	1	10	0
33	Twine	6 samples.	1	0	0			
34	Best samples of Writing Paper, of sorts	1r. ea. smpl.	3	0	0	1	10	0
35	Best samples of Printing Paper, of sorts	1 ream each	3	0	0	1	10	0

Class F.

MANUFACTURES IN LEATHER.

NO.	OBJECT.	PRIZES.						
		First.			Second.			
		£	s.	d.	£	s.	d.	
1	Hunting Saddle.....	2	0	0	1	5	0	
2	Side Saddle.....	2	0	0	1	5	0	
3	Single Harness.....	2	10	0	1	10	0	
4	Double Harness.....	5	0	0	3	0	0	
5	Farm Harness.....	2	10	0	1	10	0	
6	Travelling Trunk.....	2	10	0	1	10	0	
7	Hose Pipe, length of not less than 25 feet.....	2	10	0	1	10	0	
8	Belting for Machinery do. do.	2	0	0	1	0	0	
9	} Boot and Shoe Making,—samples adapted to Canadian climate—Summer and Winter.....	2	10	0	Men's,	1	10	0
10					Women's	1	10	0
11					Children's	1	0	0
12	Moccasins.....6 pair	3	0	0	2	0	0	
13	Book Binding, strong and ornamental.....	2	10	0	1	10	0	

Carriages.

NO.	OBJECT.	PRIZES.					
		First.			Second.		
		£	s.	d.			
1	Sleigh, single, complete.....	7	10	0			
2	Do. double, do.	10	0	0			
3	Summer Carriage.....	7	10	0			
4	Pleasure Carriage, single horse.....	3	10	0			
5	Do. do. pair.....	5	0	0			
6	Light Buggy.....	4	0	0			
7	Light Farm Waggon.....	5	0	0			
8	Buggy Waggon.....	4	0	0			

Class G.

PLASTIC ART—SCULPTURE, CARVING, WOOD ENGRAVING, PRINTING, ETC.

NO.	OBJECT.	PRIZES.	
		First.	Second.
		£ s. d.	£ s. d.
1	Best Specimen Modelling of Foliage, cast in Plaster.....	2 10 0	1 10
2	Best Specimen Modelling of a Life Subject, cast in Plaster	4 0 0	2 0 0
3	Best Specimen Ornamental Stone Cutting in Foliage or other enrichment for Architectural Decoration.....	4 0 0	2 0 0
4	Best Specimen of Sculpture in Marble or Stone of a Life Subject.....	5 0 0	2 10 0
5	Best Specimen of Carving in Wood.....	3 0 0	1 10 0
6	Best Specimen of Wood Engraving on Canadian Wood, Block and Proof.....	3 0 0	2 0 0
7	Best Specimen of Seal Engraving or Medalling.....	3 10 0	2 0 0
8	Best Specimen of Copper Plate Printing, Canadian Copperplate and Proof.....	4 0 0	2 10 0
9	Best Specimen of Artistic Lithography on Canadian Stone, Stone and Proof.....	4 0 0	2 0 0
10	Best Specimen of Lithographic Ornamental Printing on Canadian Stone, Stone and Proof.....	2 10 0	1 10 0
11	Best Specimen of Book Letter Press Printing.....	2 10 0	1 10 0
12	Best Specimen of Ornamental Letter Press Printing, exhibiting variety of Type and Colour, and skill in combination and arrangement.....	3 0 0	2 0 0
13	Best Designs for a Set of New Provincial Coinage.....	Gold Medal	or £10

Class H.

INDIAN PRODUCTIONS.

NO.	OBJECT.	PRIZE.
		£ s. d.
1	Best Birch Canoe furnished with Paddles, and Gum.....	7 10 0
2	Largest sheet of Birch Bark prepared.....	1 0 0
3	Saddle—Horse.....	2 0 0
4	Indian Cradle.....	2 10 0
5	Tobacco Pouch with Quills.....	2 0 0
6	Pipe of Peace.....	1 5 0
7	Pipe of War.....	1 5 0
8	Bark work.....	2 10 0
9	Basket work, nest of.....	2 0 0
10	Straw work.....	1 0 0
11	Snow Shoes.....	2 0 0
12	Matting, set of half dozen.....	2 0 0

Miscellaneous.

NO.	OBJECT.	PRIZE.		
		£	s.	d.
1	Best Musical Instruments,—assortment, exhibited by Makers only.	5	0	0
2	Best Piano,—exhibited by Makers only.....	10	0	0
3	Water Filter	2	10	0
4	Refrigerator	4	0	0
5	Washing Machine.....	1	0	0
6	Shower Bath	2	0	0
7	Spinning Wheel.....	1	10	0

Copies of the Prize List may be obtained on application to any Member of the Legislature, the Wardens or Mayors of Municipalities, throughout the Province, to John Leeming, Esq., Secretary to the Executive Committee at Montreal, or to the undersigned.

FRED. WM. CUMBERLAND,
Secretary to the Commission.

Toronto, 24th August, 1850.

IZE.

s.	d.
0	0
0	0
10	0
0	0
0	0
0	0
0	0
10	0

n to
s of
Esq.,
the

t.

