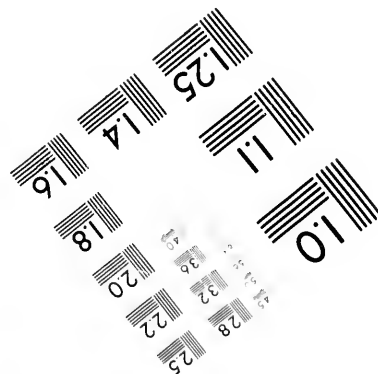
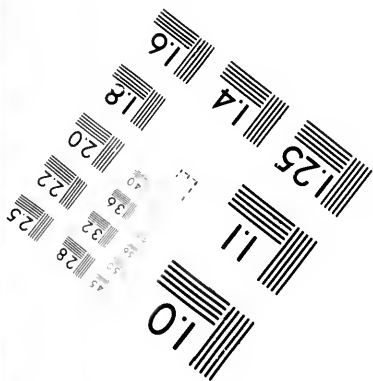
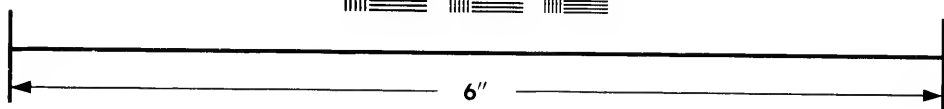
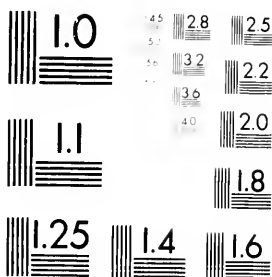


**IMAGE EVALUATION
TEST TARGET (MT-3)**



**Photographic
Sciences
Corporation**

23 WEST MAIN STREET
WEBSTER, N.Y. 14580
(716) 872-4503

25
28
32
35
22
20
18

**CIHM/ICMH
Microfiche
Series.**

**CIHM/ICMH
Collection de
microfiches.**

10



Canadian Institute for Historical Microreproductions

Institut canadien de microreproductions historiques

1980

Technical and Bibliographic Notes/Notes techniques et bibliographiques

The Institute has attempted to obtain the best original copy available for filming. Features of this copy which may be bibliographically unique, which may alter any of the images in the reproduction, or which may significantly change the usual method of filming, are checked below.

L'Institut a microfilmé le meilleur exemplaire qu'il lui a été possible de se procurer. Les détails de cet exemplaire qui sont peut-être uniques du point de vue bibliographique, qui peuvent modifier une image reproduite, ou qui peuvent exiger une modification dans la méthode normale de filmage sont indiqués ci-dessous.

Coloured covers/
Couverture de couleur

Coloured pages/
Pages de couleur

Covers damaged/
Couverture endommagée

Pages damaged/
Pages endommagées

Covers restored and/or laminated/
Couverture restaurée et/ou pelliculée

Pages restored and/or laminated/
Pages restaurées et/ou pelliculées

Cover title missing/
Le titre de couverture manque

Pages discoloured, stained or foxed/
Pages décolorées, tachetées ou piquées

Coloured maps/
Cartes géographiques en couleur

Pages detached/
Pages détachées

Coloured ink (i.e. other than blue or black)/
Encre de couleur (i.e. autre que bleue ou noire)

Showthrough/
Transparence

Coloured plates and/or illustrations/
Planches et/ou illustrations en couleur

Quality of print varies/
Qualité inégale de l'impression

Bound with other material/
Relié avec d'autres documents

Includes supplementary material/
Comprend du matériel supplémentaire

Tight binding may cause shadows or distortion along interior margin/
La reliure serrée peut causer de l'ombre ou de la distortion le long de la marge intérieure

Only edition available/
Seule édition disponible

Blank leaves added during restoration may appear within the text. Whenever possible, these have been omitted from filming/
Il se peut que certaines pages blanches ajoutées lors d'une restauration apparaissent dans le texte, mais, lorsque cela était possible, ces pages n'ont pas été filmées.

Pages wholly or partially obscured by errata slips, tissues, etc., have been refilmed to ensure the best possible image/
Les pages totalement ou partiellement obscurcies par un feuillet d'errata, une pelure, etc., ont été filmées à nouveau de façon à obtenir la meilleure image possible.

Additional comments:
Commentaires supplémentaires:

This item is filmed at the reduction ratio checked below/
Ce document est filmé au taux de réduction indiqué ci-dessous.

10X	14X	18X	22X	26X	30X
<input type="checkbox"/>	<input type="checkbox"/>	<input type="checkbox"/>	<input checked="" type="checkbox"/>	<input type="checkbox"/>	<input type="checkbox"/>
12X	16X	20X	24X	28X	32X

The copy filmed here has been reproduced thanks to the generosity of:

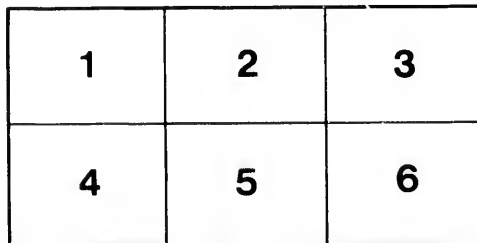
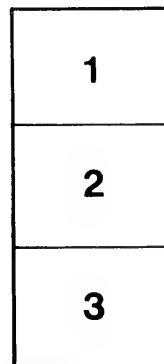
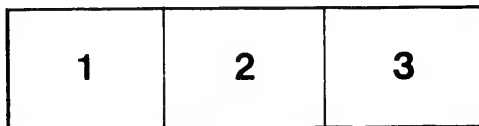
Library of the Public
Archives of Canada

The images appearing here are the best quality possible considering the condition and legibility of the original copy and in keeping with the filming contract specifications.

Original copies in printed paper covers are filmed beginning with the front cover and ending on the last page with a printed or illustrated impression, or the back cover when appropriate. All other original copies are filmed beginning on the first page with a printed or illustrated impression, and ending on the last page with a printed or illustrated impression.

The last recorded frame on each microfiche shall contain the symbol \rightarrow (meaning "CONTINUED"), or the symbol ∇ (meaning "END"), whichever applies.

Maps, plates, charts, etc., may be filmed at different reduction ratios. Those too large to be entirely included in one exposure are filmed beginning in the upper left hand corner, left to right and top to bottom, as many frames as required. The following diagrams illustrate the method:



L'exemplaire filmé fut reproduit grâce à la générosité de:

La bibliothèque des Archives
publiques du Canada

Les images suivantes ont été reproduites avec le plus grand soin, compte tenu de la condition et de la netteté de l'exemplaire filmé, et en conformité avec les conditions du contrat de filmage.

Les exemplaires originaux dont la couverture en papier est imprimée sont filmés en commençant par le premier plat et en terminant soit par la dernière page qui comporte une empreinte d'impression ou d'illustration, soit par le second plat, selon le cas. Tous les autres exemplaires originaux sont filmés en commençant par la première page qui comporte une empreinte d'impression ou d'illustration et en terminant par la dernière page qui comporte une telle empreinte.

Un des symboles suivants apparaîtra sur la dernière image de chaque microfiche, selon le cas: le symbole \rightarrow signifie "A SUIVRE", le symbole ∇ signifie "FIN".

Les cartes, planches, tableaux, etc., peuvent être filmés à des taux de réduction différents. Lorsque le document est trop grand pour être reproduit en un seul cliché, il est filmé à partir de l'angle supérieur gauche, de gauche à droite, et de haut en bas, en prenant le nombre d'images nécessaire. Les diagrammes suivants illustrent la méthode.

ils
du
difier
ne
age

rata
o

elure,
à

PEN AND IN

COAST AND
HARBOR

DRAWN BY

SUMMER

Copyright. 1877

HELD

INK SKETCHES

LABORERS
OF
LABRADOR

GEO. E. GLADWIN.

IER OF 1876.

right. 1877 by Geo. E. Gladwin.

— HELIOTYPE —

CAPT. JOHN

BRIGUS, NE

WHOSE KINDNESS AND GENEROUS TREATMENT

WHILE WEATHER BOUND IN

WILL LONG B

THIS WORK IS RES

BY THE

TO

T. JOHN BARTLETT

OF

US, NEWFOUNDLAND,

TREATMENT OF A PARTY OF EXCURSIONISTS FROM BOSTON

BOUND IN ST. MICHAEL'S BAY, LABRADOR,

WHICH WILL LONG BE REMEMBERED.

WORK IS RESPECTFULLY INSCRIBED

BY THE AUTHOR.

CONT

1. Title Page.
 2. Dedication.
 3. Table of Contents.
 4. Selections.
 5. Little Mecattina Harbor.
 6. Whale Head Harbor.
 7. Bonne Esperance Harbor.
 8. Blanc Sablons Harbor.
 9. The First Iceberg.
 10. Ship Head Harbor.
 11. Henley Harbor.
 12. Icebergs before Occasional Harbor.
 13. "Stray" Harbor.
 14. Square Harbor.
 15. St. Michaels Bay. Bartletts Station.
 16. Venison Tickle.
-

CONTENTS.

17. Domino Harbor.
 18. Domino Run.
 19. Indian Tickle.
 20. Schooners scudding through Indian Tickle.
 21. Greedy Harbor.
 22. Large Iceberg off the Coast.
 23. Overhauling the Pilot.
 24. Dumpling Harbor.
 25. Horse Chops.
 26. Fish Cove Harbor.
 27. Tub Harbor from vessel.
 28. Tub Harbor from shore.
 29. Duck Island Harbor.
 30. Rigoulette. from vessel.
 31. Rigoulette. At the dock.
 32. The Last Iceberg.
-

"Hark! heard you no
And there and
For some uneasy
As he turns

"Pasting their woe's anchors,

The barge came drifting by,
A fearful fleet for a ship to meet
Under the midnight sky;
Their keels are fathoms under,
Their prows are sharp as steel,
Their stroke, the crash of thunder,
All silently on they steal."

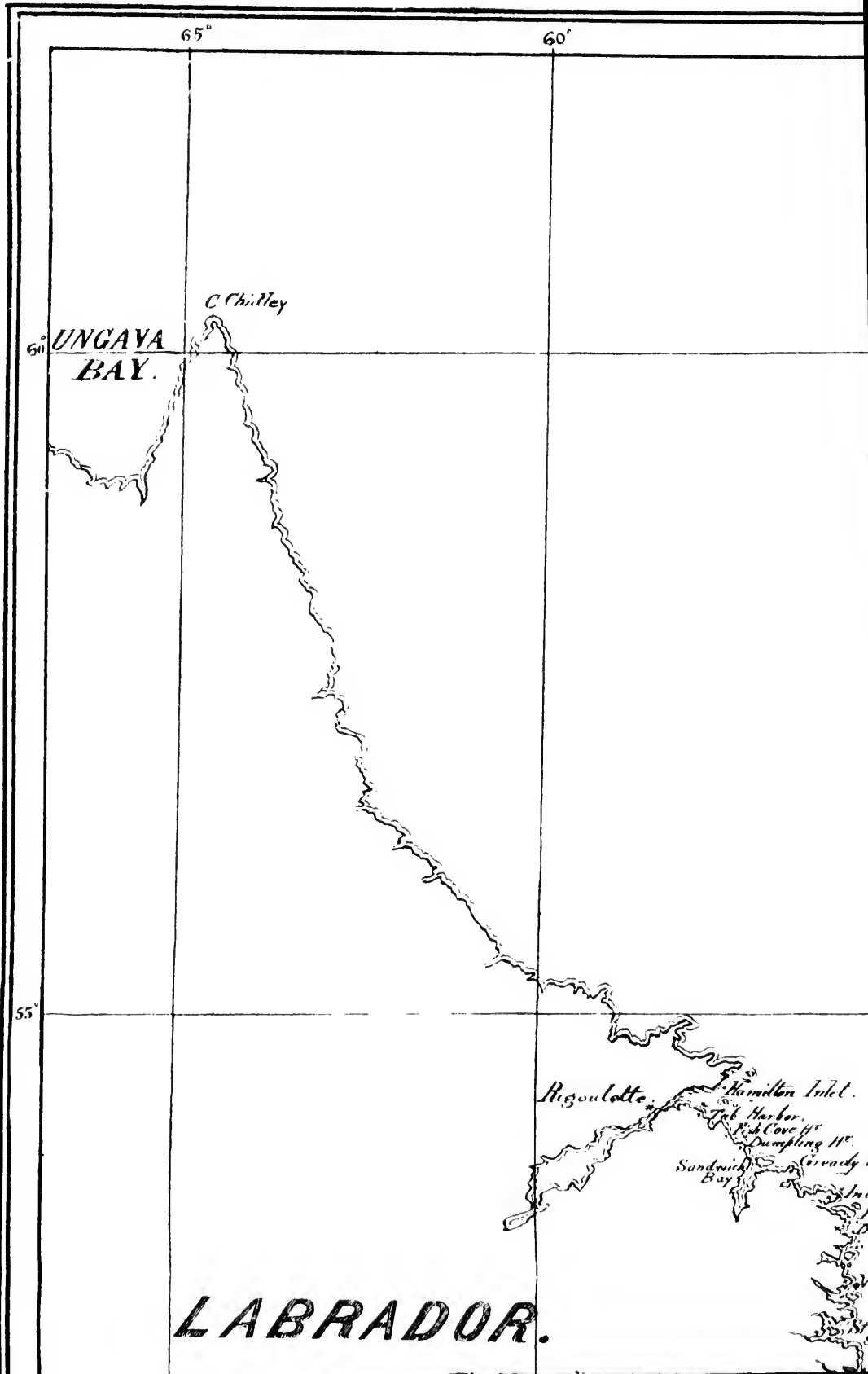
did you not the sound of guns
there and there again!
uneasy iceberg rear
turns in the frozen main."

by,
meet
by;
ter;
s steel,
thunder,
trial."

"In the ruddy glow of daylight,
When the sea is clear and wide,
When the sun with a clear and gay light
Gilds the avalanche's side;
Then the sailor-by sees castles
And cities fair to view,
With battlements and archways,
And horsemen riding through."







65°

60°

60°

UNGAVA
BAY.

C. Chilly

55°

Régoulette

Hamilton Inlet

Fish Harbor

Fish Cove II

Dumpling II

Sandwich Bay

Arady

LABRADOR.

55°

50°

45°

GREENLAND.

Cape Devolden

Cape Farwell.

60°

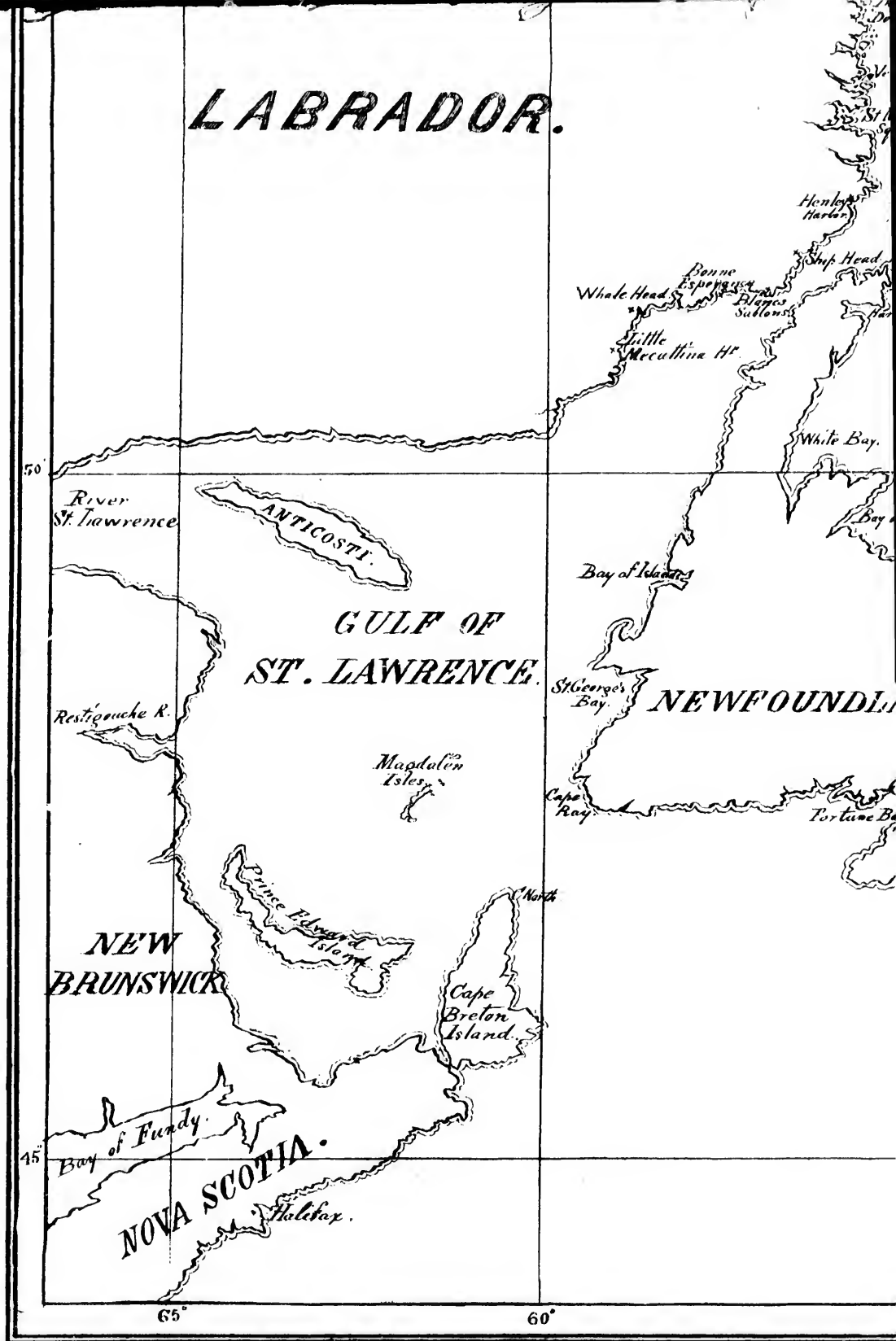
THE
 EASTERN COAST.
 OF
 LABRADOR.
 AND
 NEWFOUNDLAND.

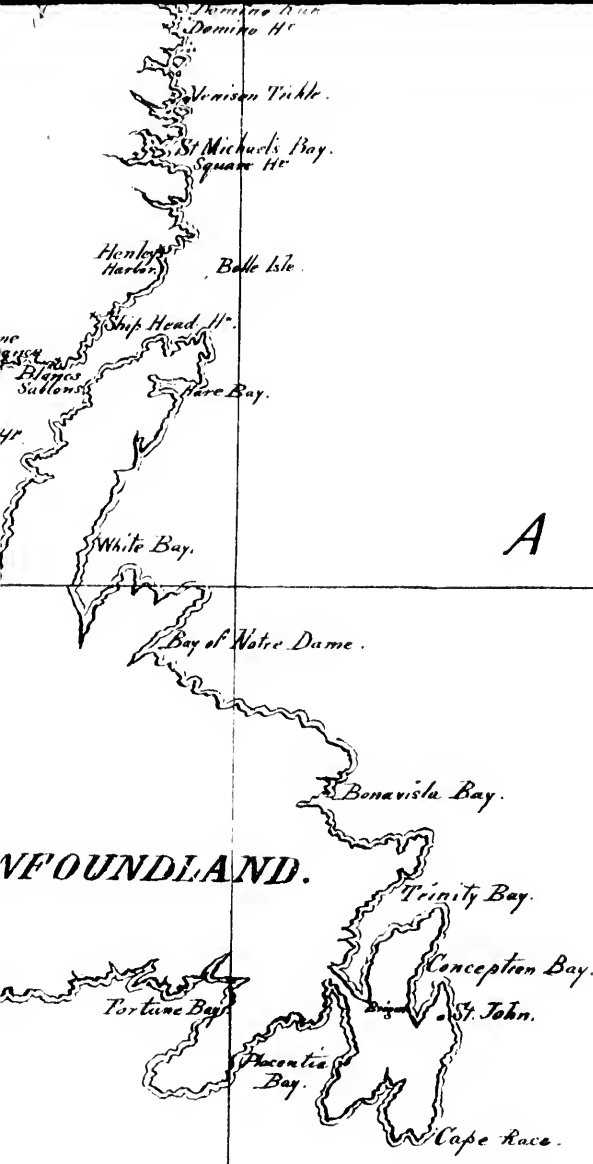
*From the British Admiralty and U. S. Coast Survey charts.
 By Geo. E. Chadwin.
 Helotyped.*

55°



LABRADOR.





A T L A N T I C
O C E A N .

NEWFOUNDLAND.

55°

50°

45°

50°

45°



5. *Little Mecallina 1st Harbor made on*
Looking South



Harbor made on Coast of Labrador. July 26th 1876.
Looking South from high land.

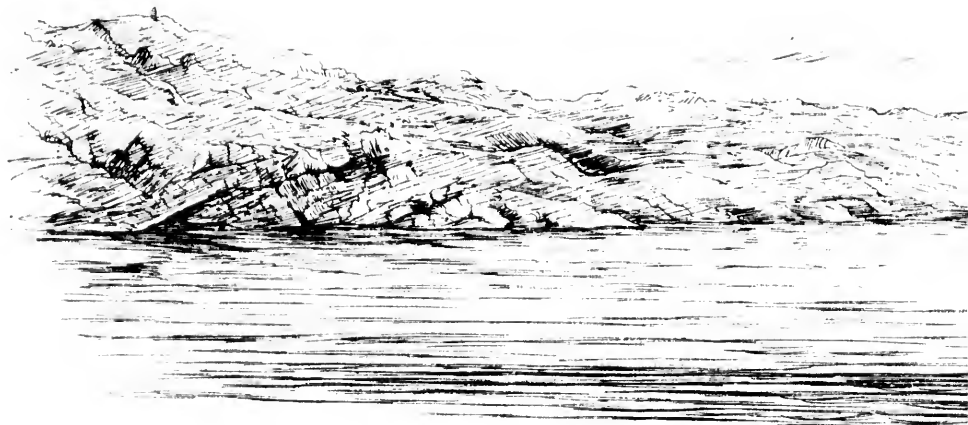


6. Whale Head 2nd Harbor made
From deck of Scho



Geo. E. Gladwin

Harbor made on Coast of Labrador July 28th
on deck of Schooner looking North.

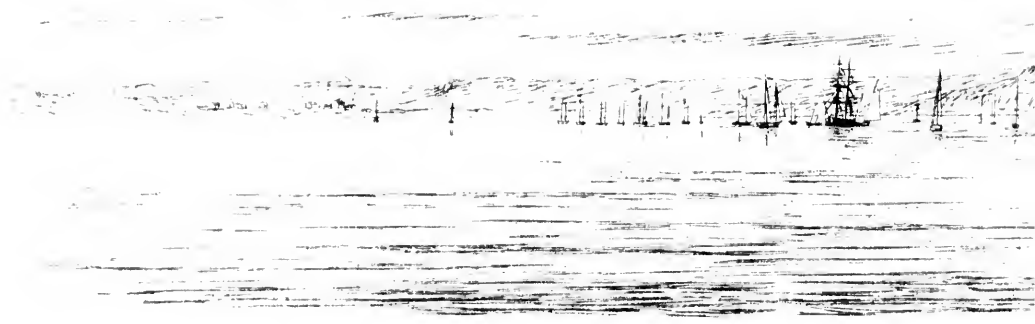


7. Bonne Esperance. 3rd Harbor on
(Mission Station under direction of Lion's Cong)
View from vessel loc



G. C. G.

3rd Harbor on Coast of Labrador July 29th
The Lion's Congregational Church of Montreal is located here.
From vessel looking South.



8. [Blanc Sablon, 4th Harbor
View from Vesse



G. C. G.

1. 4th Harbor made on Coast of Labrador. Aug. 1st.
View from Vessel looking North east



9. The First Iceberg seen
View looking North from deck of our Vessel.



Iceberg seen on Coast of Labrador. Aug 1st
of our Vessel. Soon after 120 icebergs were counted on all sides.



10. Ship Head. 5th Harbor made of
View from deck looking



404

Harbor made on Coast of Labrador. Aug 2nd
on deck looking North West



11. Henty. 6th Harbor made on
View from deck of vessel looking No. V



Harbor made on Coast of Labrador. Aug 3rd.
Looking No. West. Icebergs aground in the harbor.



12. Icebergs along the Coast before
View from the vessel



G. C. S.

Coast before Occasional Harbor. Aug 4th
from the vessel looking West.



13.

"Stray Harbor." St. Michael's

View from deck of vessel

Icebergs on



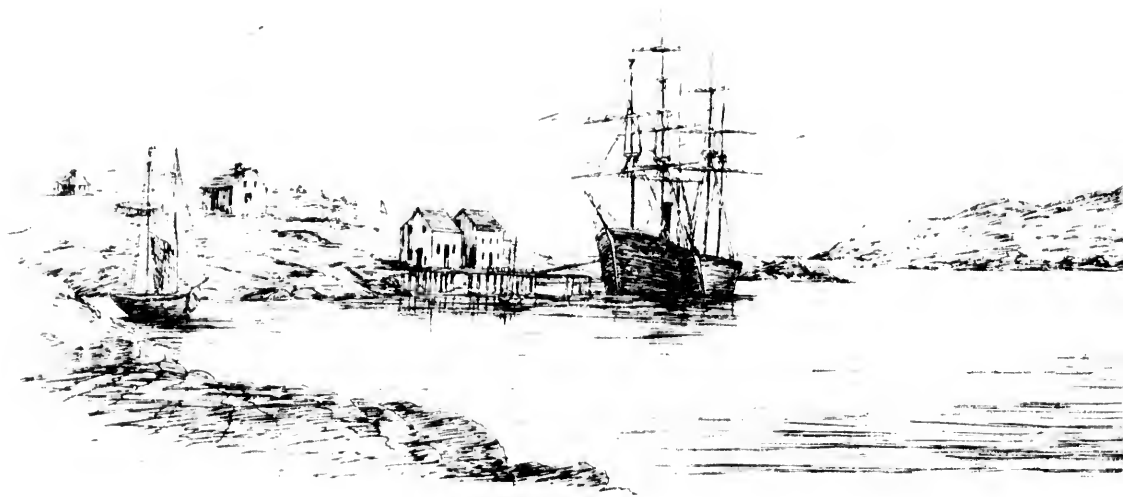
"Harbor" St. Michael's Bay. Aug. 5th
from deck of vessel looking South East.
Icebergs on the left.



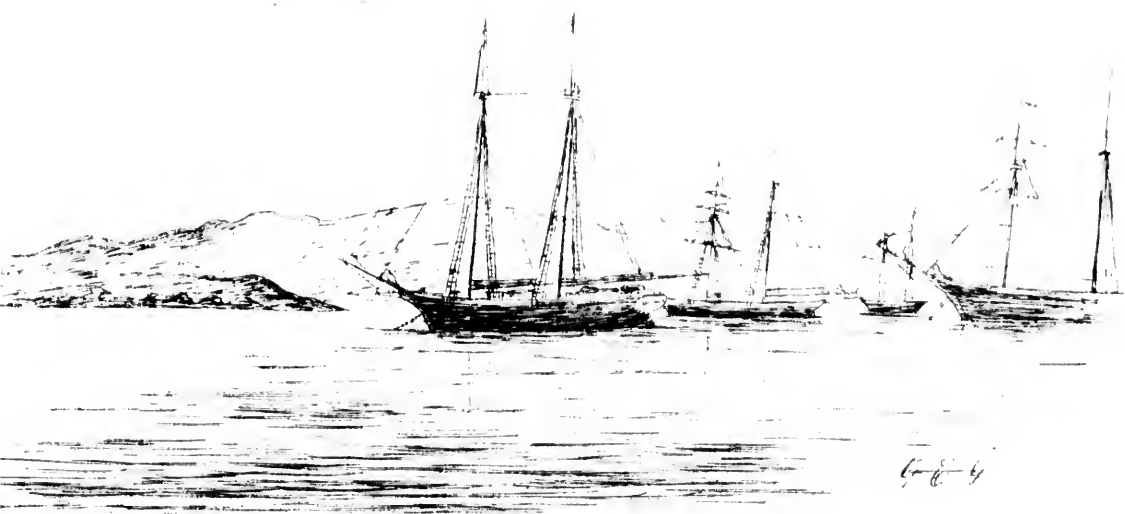
14. Square Island. 8th Harbor of
An Iceberg upside down. View



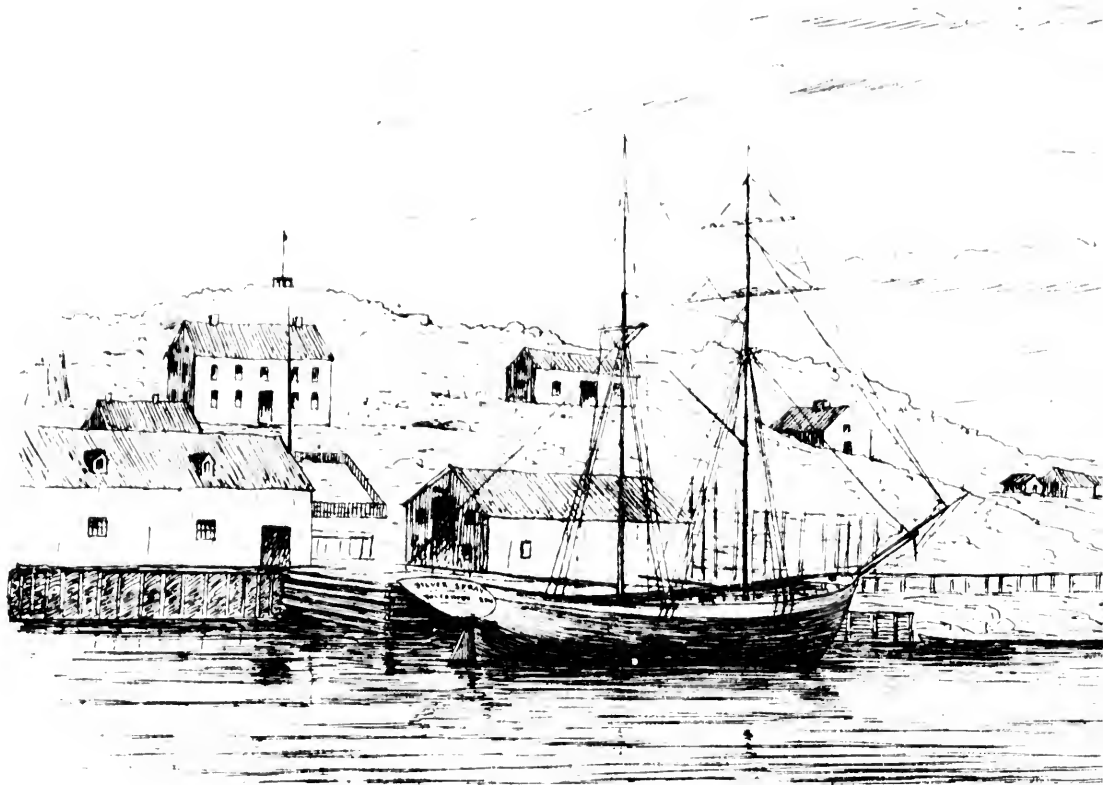
8th Harbor on Coast of Labrador. Aug 5th
Upside down. View from deck looking West.



15. Bartlett's Station, Vincent's Arm of St. Michael's Bay.
View from the shore looking South East. Our schooner "Nimbus"

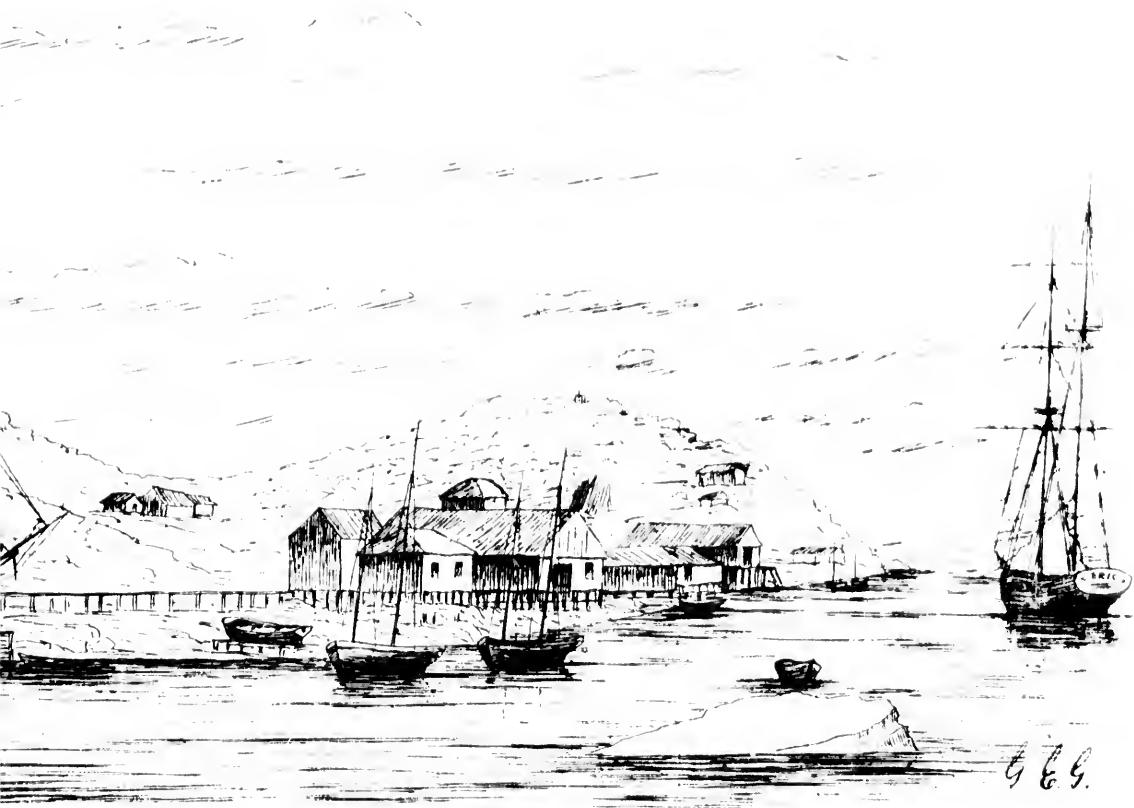


Michael's Bay. 9th Harbor on Coast of Labrador Aug 31st
The "Nimbus" lying in centre of Bay. Steamer "Panther" at the pier

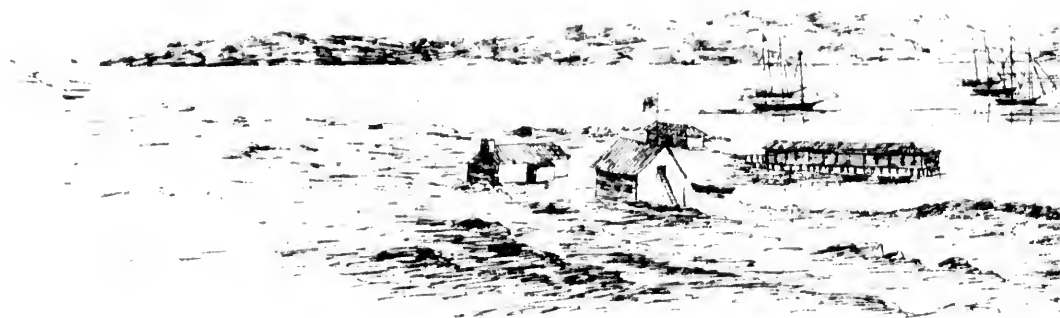


16.

Venison Tickle. 10th Harbor on C
View from vessel looking So. West.



Harbor on Coast of Labrador Aug 7th.
Wind S. West. Ice floating through the Harbor.



17. Domino Harbor. The Fleet at anchor. 11th
View from shore



G. G. G.

at anchor. 11th Harbor on Coast of Labrador Aug. 25th
w From shore looking North.

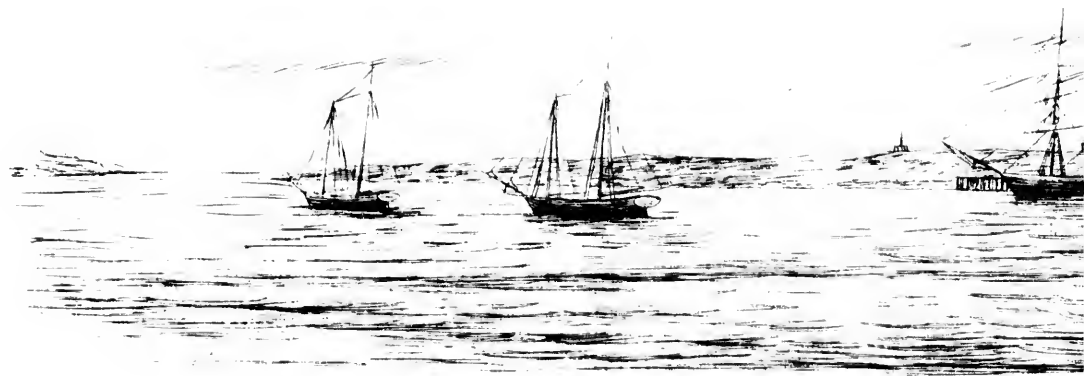


18. In Domino Run. The Fleet Ahead. Leaving

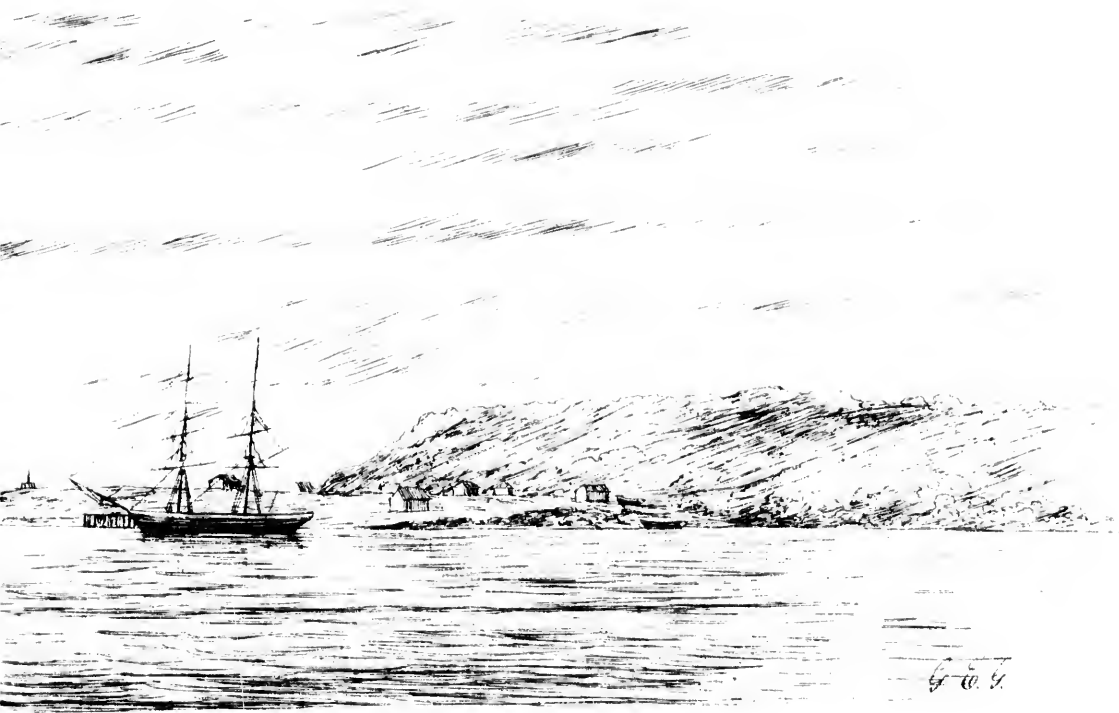


464

ad. Leaving Indian Tickle. Bound South. Aug. 25th.

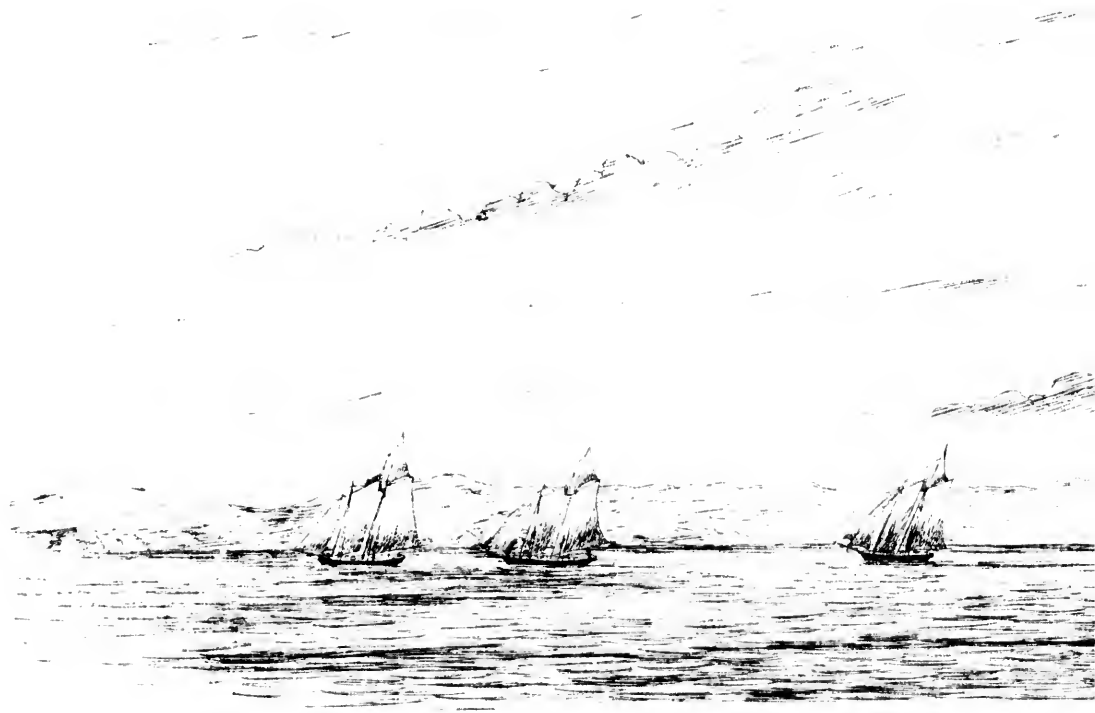


19. Indian Tickle. 12th Harbor on Co
View from vessel looking



G. C. G.

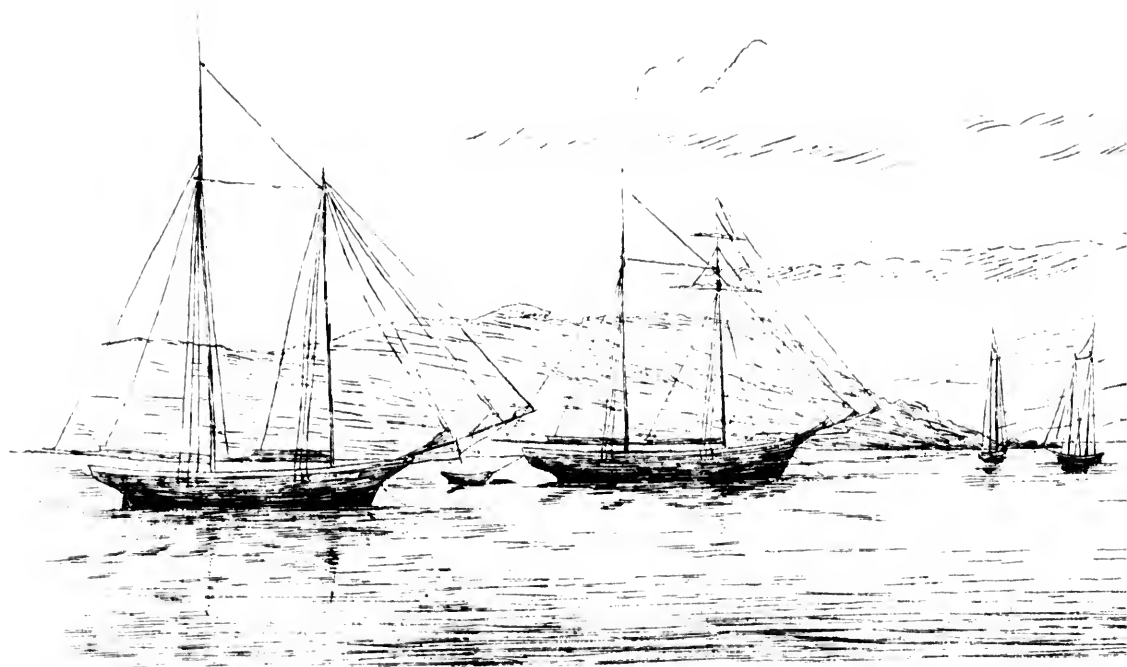
" Harbor on Coast of Labrador. Aug. 8th.
vessel looking North East.



20. Fishing Schooners scudding
View from vessel



rs scudding through Indian Tickle. Aug. 9th.
w from vessel looking North.



21. Greedy Harbor. 13th Harbor on Co
View from vessel too



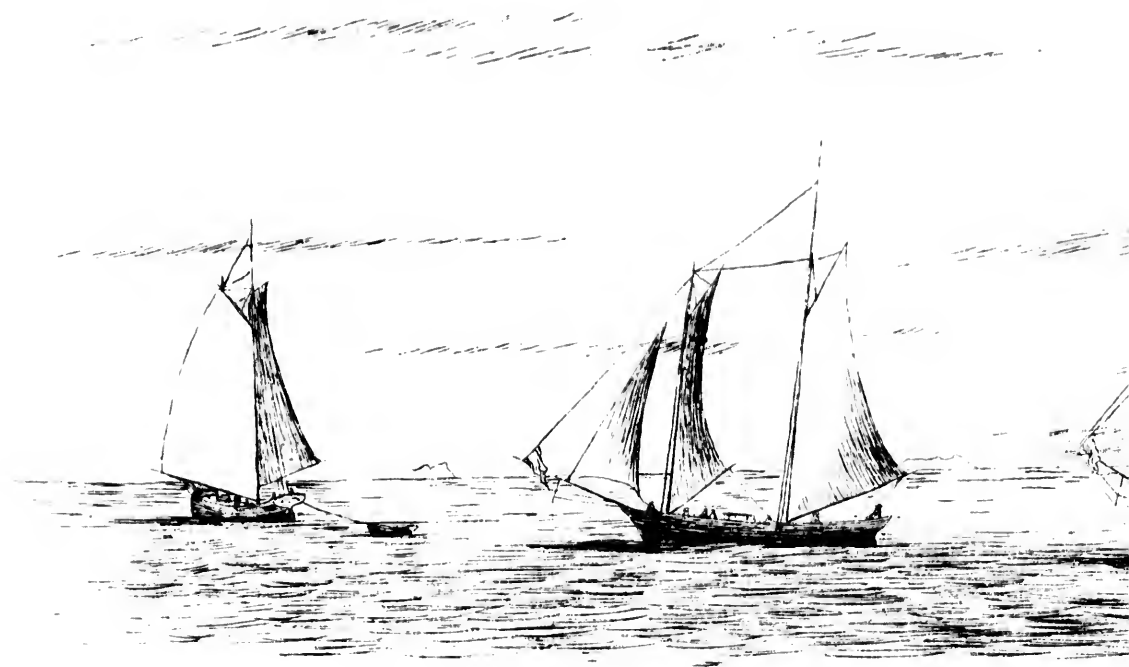
3^d Harbor on Coast of Labrador. Aug. 12th.
From vessel looking South West.



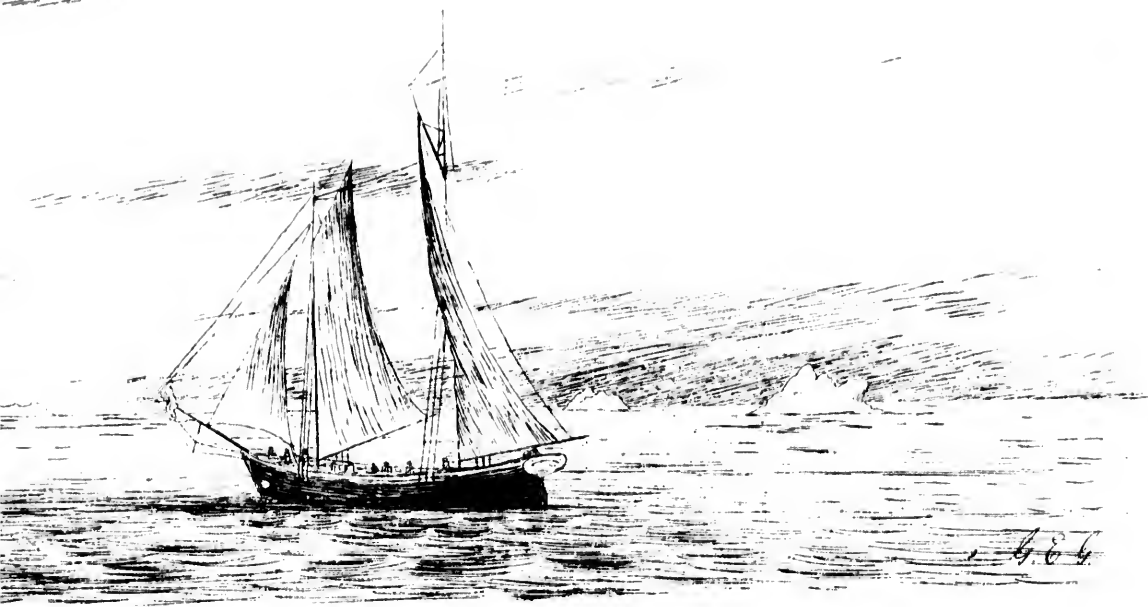
22. Large Iceberg off the Coast ab
View from deck of our



The Coast above Greedy Harbor. Aug. 12th.
From deck of our vessel looking West.



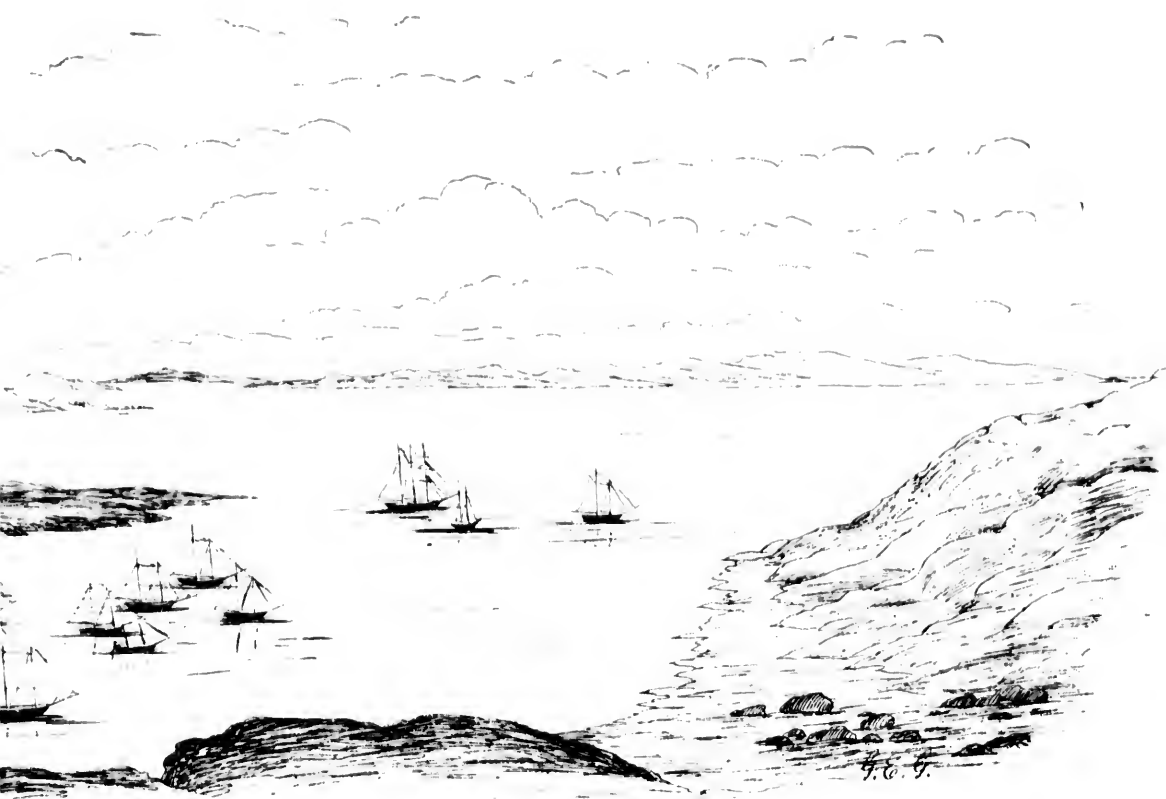
23. Overhauling the Pilot off Cape Porcupine.
Looking North East



Cape Porcupine. Icebergs in the distance. Aug. 12th.
Sailing North East from vessel.

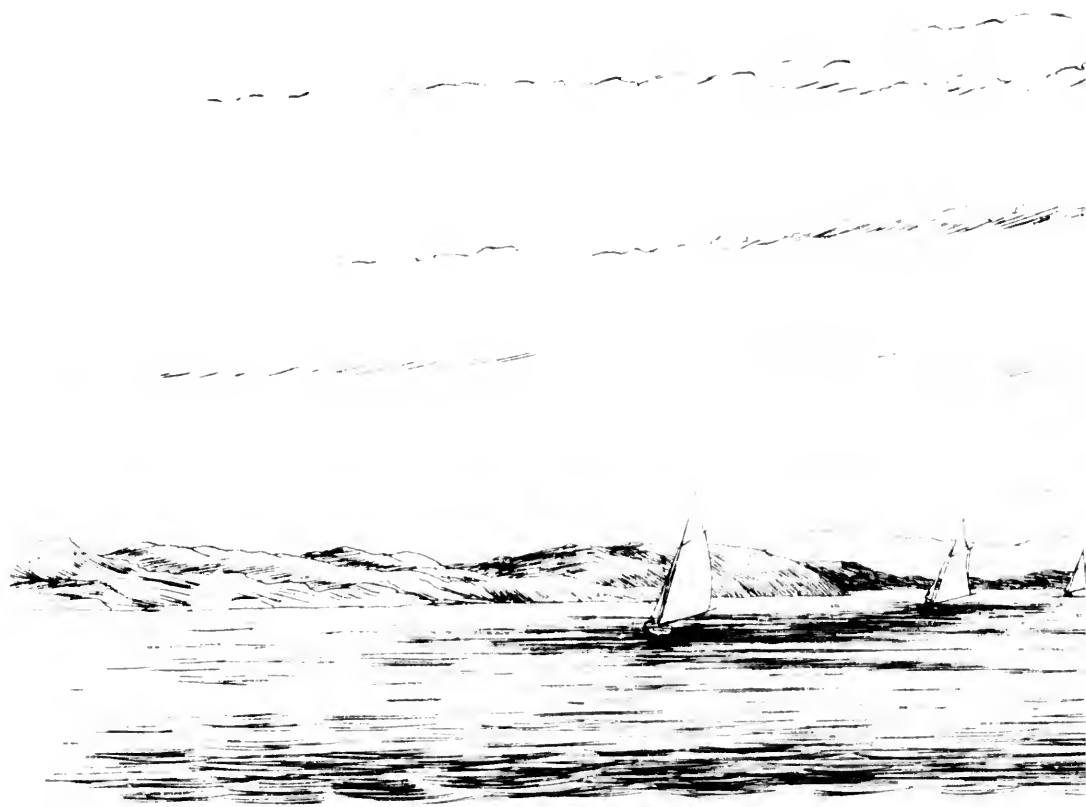


24. Dumpling Harbor. Fishing Fleet at anchor.
View from High Bluff

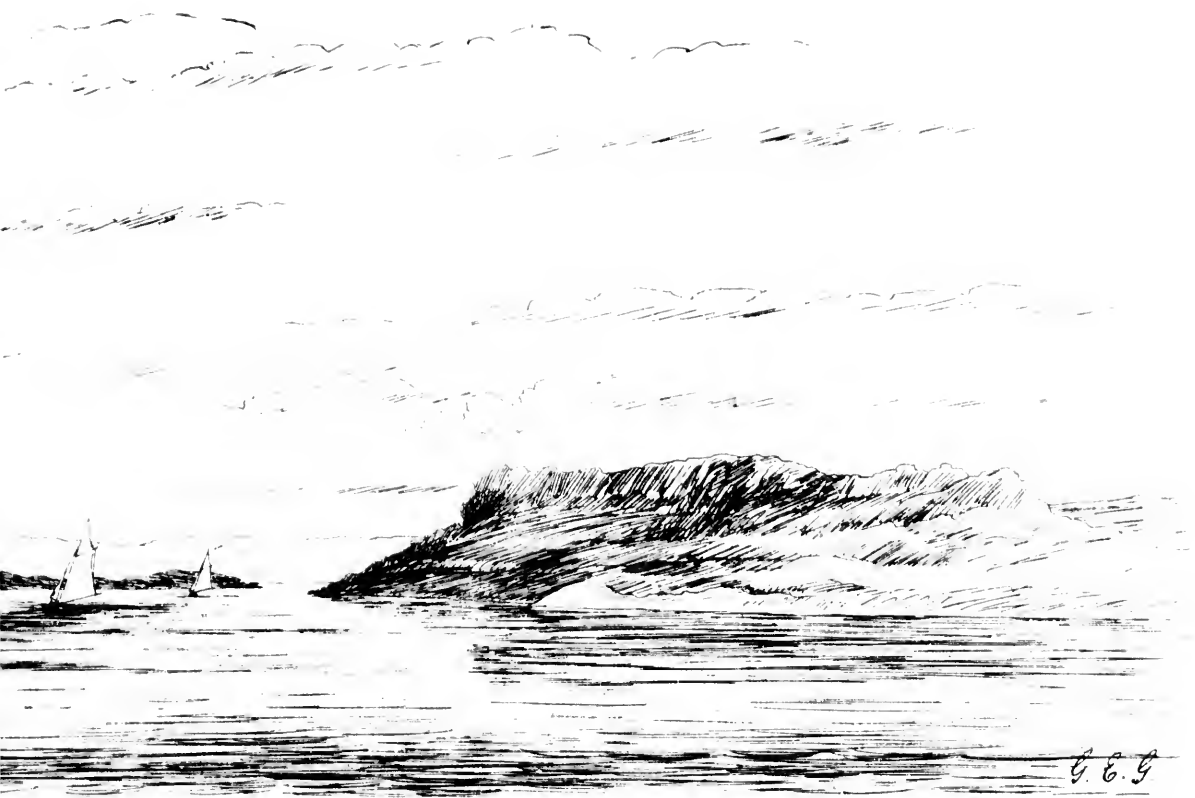


fleet at anchor. 14th Harbor on Coast of Labrador. Aug 22nd.

from High Bluff looking South East.



25. Laying course through Horse Cho
View from ves



rough Horse Chops. On Coast of Labrador. Aug. 22nd
View from vessel looking South.



26.

Fish Cove. 15th Harbor on Co

View from shore overlooking the



5th Harbor on Coast of Labrador. Aug. 19th.
View overlooking the Harbor. Looking So. East.



27

Tub Harbor. 16th Harbor made
View from ves



G. E. G.

Harbor made on Coast of Labrador. Aug. 12th.
View from vessel looking North.



28. Tub Harbor. The "Nimbus" in company with the H
View from shore look



Company with the Hudson Bay Co's Schooner "Walrus" Aug 17th.
from shore looking East.



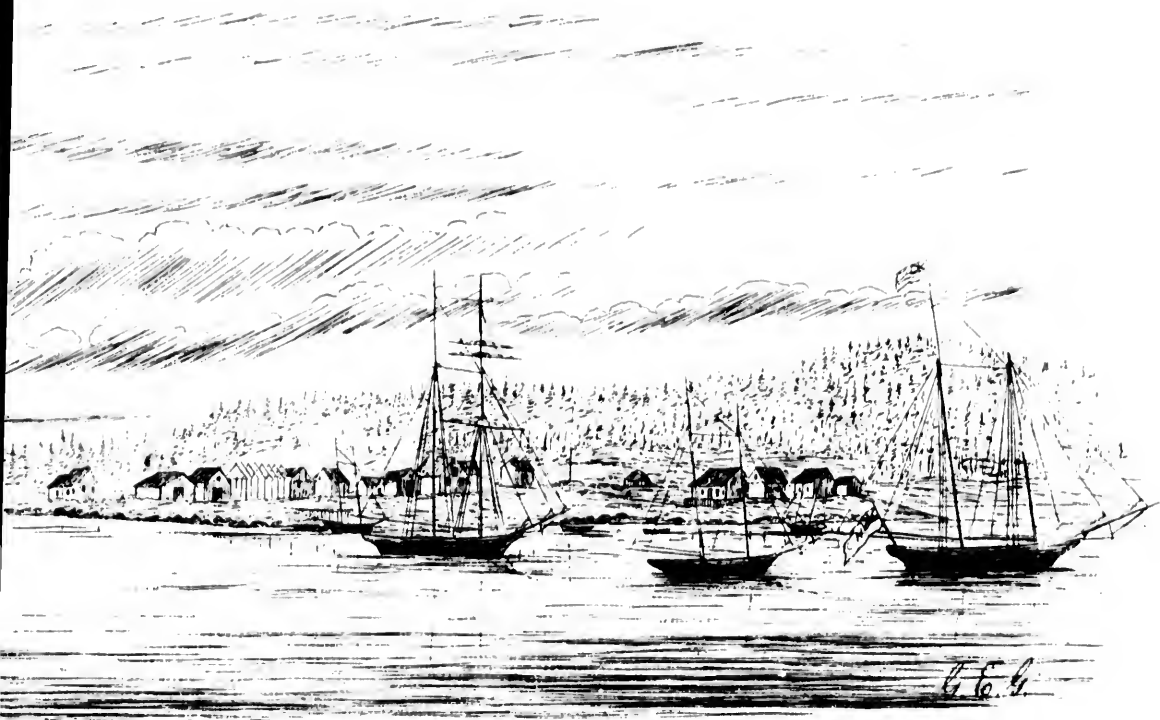
29. Duck Island Harbor. Our departure. The "Walrus"
View From vessel too



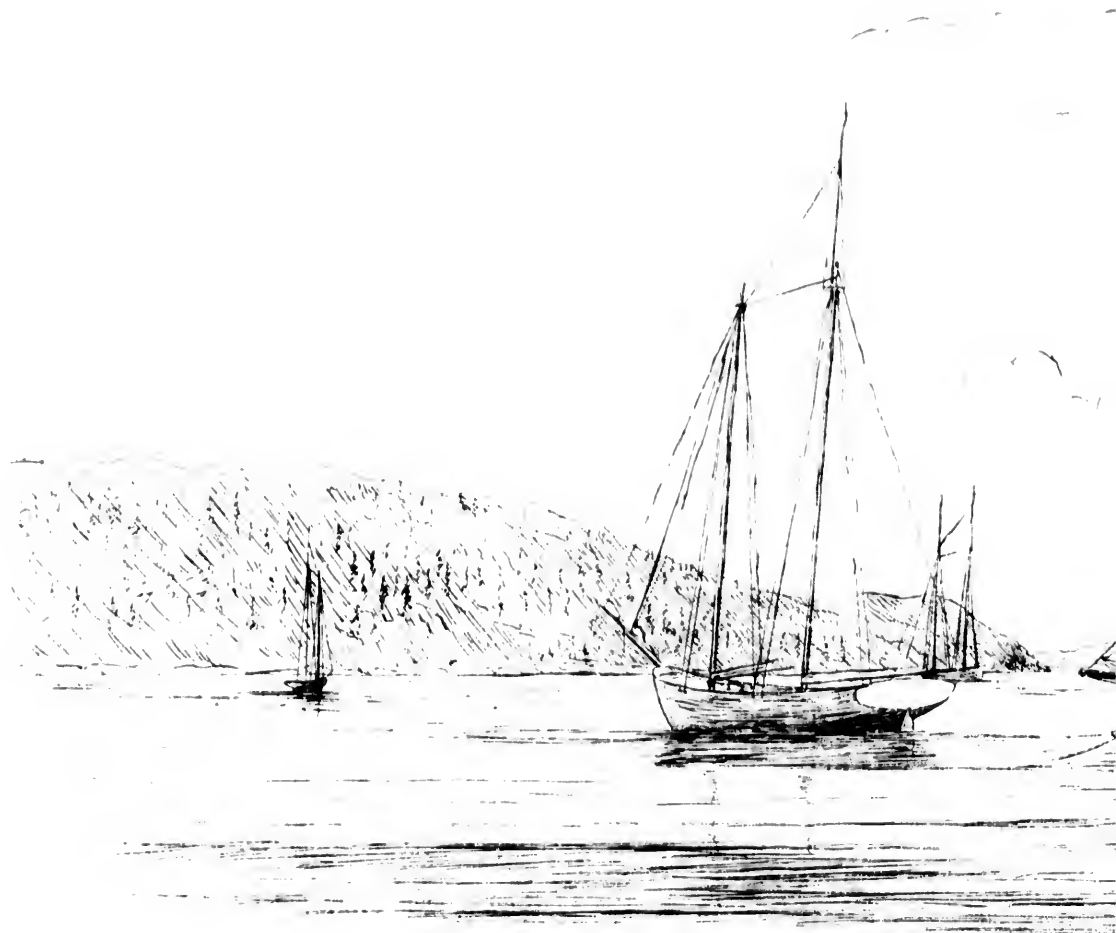
The "Walrus" following. 17th Harbor made on Coast of Labrador. Aug. 17th.
From vessel looking North.



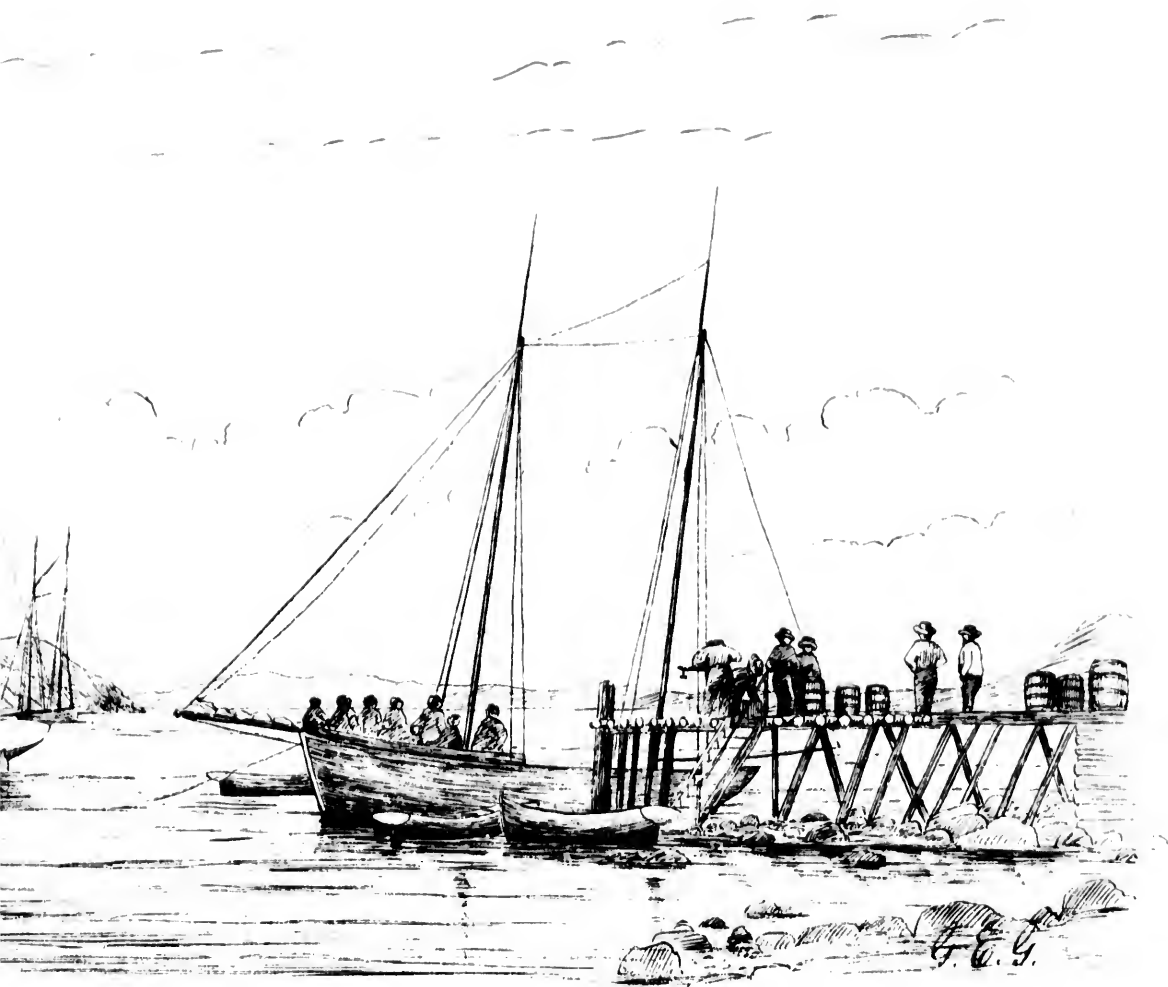
30. Rigoulette. In Hamilton Inlet or Walrus Bay. 18th and
Trading Post of the Hudson Bay Co. Revenue Cutter
View from deck of our Schooner



Bay. 18th and last Harbor made on Coast of Labrador. Aug. 14th.
Revenue Cutter "Voyager" on the right. Schooner Walrus in front.
Deck of our Schooner looking North West.



31. Rigoulette. Esquimaux Indians track
View from shore look



Indians trading in Salmon. Aug 14th.
m shore looking So. East.



32. The Last Iceberg. 100 ft. high. Seen off
View looking South E



high. Seen off Southern Extremity of Belle Isle. Sept. 2nd.
Looking South East from our Vessel.

