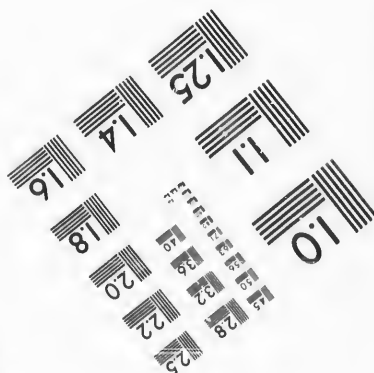
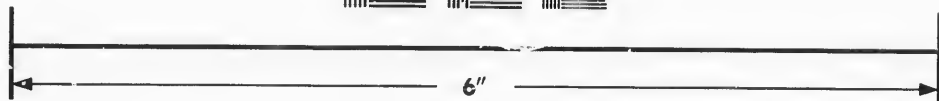
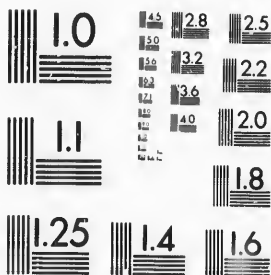


**IMAGE EVALUATION  
TEST TARGET (MT-3)**



**Photographic  
Sciences  
Corporation**

23 WEST MAIN STREET  
WEBSTER, N.Y. 14580  
(716) 872-4503

13 28  
16 32  
18 22  
20

**CIHM/ICMH  
Microfiche  
Series.**

**CIHM/ICMH  
Collection de  
microfiches.**



Canadian Institute for Historical Microreproductions / Institut canadien de microreproductions historiques

10

**© 1987**

Technical and Bibliographic Notes/Notes techniques et bibliographiques

The Institute has attempted to obtain the best original copy available for filming. Features of this copy which may be bibliographically unique, which may alter any of the images in the reproduction, or which may significantly change the usual method of filming, are checked below.

L'institut a microfilmé le meilleur exemplaire qu'il lui a été possible de se procurer. Les détails de cet exemplaire qui sont peut-être uniques du point de vue bibliographique, qui peuvent modifier une image reproduite, ou qui peuvent exiger une modification dans la méthode normale de filmage sont indiqués ci-dessous.

- Coloured covers/  
Couverture de couleur
- Covers damaged/  
Couverture endommagée
- Covers restored and/or laminated/  
Couverture restaurée et/ou pelliculée
- Cover title missing/  
Le titre de couverture manque
- Coloured maps/  
Cartes géographiques en couleur
- Coloured ink (i.e. other than blue or black)/  
Encre de couleur (i.e. autre que bleue ou noire)
- Coloured plates and/or illustrations/  
Planches et/ou illustrations en couleur
- Bound with other material/  
Relié avec d'autres documents
- Tight binding may cause shadows or distortion along interior margin/  
La reliure serrée peut causer de l'ombre ou de la distorsion le long de la marge intérieure
- Blank leaves added during restoration may appear within the text. Whenever possible, these have been omitted from filming/  
Il se peut que certaines pages blanches ajoutées lors d'une restauration apparaissent dans le texte, mais, lorsque cela était possible, ces pages n'ont pas été filmées.
- Additional comments:/  
Commentaires supplémentaires:

- Coloured pages/  
Pages de couleur
- Pages damaged/  
Pages endommagées
- Pages restored and/or laminated/  
Pages restaurées et/ou pelliculées
- Pages discoloured, stained or foxed/  
Pages décolorées, tachetées ou piquées
- Pages detached/  
Pages détachées
- Showthrough/  
Transparence
- Quality of print varies/  
Qualité inégale de l'impression
- Includes supplementary material/  
Comprend du matériel supplémentaire
- Only edition available/  
Seule édition disponible
- Pages wholly or partially obscured by errata slips, tissues, etc., have been refilmed to ensure the best possible image/  
Les pages totalement ou partiellement obscurcies par un feuillet d'errata, une pelure, etc., ont été filmées à nouveau de façon à obtenir la meilleure image possible.

This item is filmed at the reduction ratio checked below/  
Ce document est filmé au taux de réduction indiqué ci-dessous.

10X	12X	14X	16X	18X	20X	22X	24X	26X	28X	30X	32X
					✓						

The copy filmed here has been reproduced thanks to the generosity of:

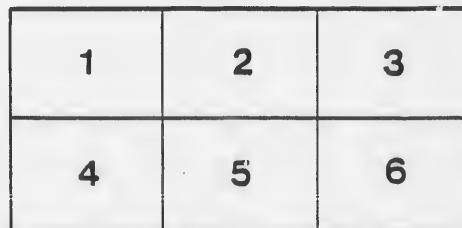
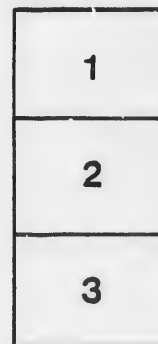
The Nova Scotia  
Legislative Library

The images appearing here are the best quality possible considering the condition and legibility of the original copy and in keeping with the filming contract specifications.

Original copies in printed paper covers are filmed beginning with the front cover and ending on the last page with a printed or illustrated impression, or the back cover when appropriate. All other original copies are filmed beginning on the first page with a printed or illustrated impression, and ending on the last page with a printed or illustrated impression.

The last recorded frame on each microfiche shell contain the symbol  $\rightarrow$  (meaning "CONTINUED"), or the symbol  $\nabla$  (meaning "END"), whichever applies.

Maps, plates, charts, etc., may be filmed at different reduction ratios. Those too large to be entirely included in one exposure are filmed beginning in the upper left hand corner, left to right and top to bottom, as many frames as required. The following diagrams illustrate the method:



L'exemplaire filmé fut reproduit grâce à la générosité de:

The Nova Scotia  
Legislative Library

Les images suivantes ont été reproduites avec le plus grand soin, compte tenu de la condition et de la netteté de l'exemplaire filmé, et en conformité avec les conditions du contrat de filmage.

Les exemplaires originaux dont la couverture en papier est imprimée sont filmés en commençant par le premier plat et en terminant soit par la dernière page qui comporte une empreinte d'impression ou d'illustration, soit par le second plat, selon le cas. Tous les autres exemplaires originaux sont filmés en commençant par la première page qui comporte une empreinte d'impression ou d'illustration et en terminant par la dernière page qui comporte une telle empreinte.

Un des symboles suivants apparaîtra sur la dernière image de chaque microfiche, selon le cas: le symbole  $\rightarrow$  signifie "A SUIVRE", le symbole  $\nabla$  signifie "FIN".

Les cartes, planches, tableaux, etc., peuvent être filmés à des taux de réduction différents. Lorsque le document est trop grand pour être reproduit en un seul cliché, il est filmé à partir de l'angle supérieur gauche, de gauche à droite, et de haut en bas, en prenant le nombre d'images nécessaire. Les diagrammes suivants illustrent la méthode.



PUBLISHED BY AUTHORITY.

# PRIZE LIST

AND

## GENERAL REGULATIONS

OF THE

### PROVINCIAL

### Industrial, Agricultural, Art and Floral

# EXHIBITION

OF NOVA SCOTIA,

TO BE HELD BY AUTHORITY OF THE PROVINCIAL LEGISLATURE AND  
UNDER THE IMMEDIATE DIRECTION AND MANAGEMENT OF THE  
CORPORATION OF THE CITY OF HALIFAX, IN THE

Royal Exhibition Building and Grounds, Halifax, N. S.

ON

MONDAY, TUESDAY, WEDNESDAY, THURSDAY AND FRIDAY

SEPTEMBER 20, 21, 22, 23 AND 24,

**1880.**

NS. Amount of Prizes offered, \$6,000.

630.6

H

WM. MCKERRON, Secretary.

Competition open to the whole Province: No charge for  
entry of Exhibits.

PRINTED AT THE HERALD OFFICE.

NS  
630.6  
+ 1280



# 'ARMY & NAVY DEPOT,'

117 & 118 Granville St. (opp. H. M. Ordnance),  
HALIFAX, N. S.

## JAMES SCOTT & CO.

—DIRECT IMPORTERS OF THE FINEST—

Champagne, Moselle, Hock (still and sparkling), Claret, Sauterne, Madeira, Port, Sherry and Marsala Wines.

Hennessy's and Martell's Old Brandies; Scotch, Irish, Bourbon and Old Rye Whiskies; DeKuyper's, Henke's and "Old Tom" Gin; Old Jamaica Rum.

All warranted choice; carefully bottled, strongly recommended for medicinal purposes, invalids, or general use.

The usual variety of Foreign Liqueurs, Bass's Ale, Guinness's Stout.

## STAPLE AND FANCY GROCERIES!

English and Domestic Hams, Bacon, Cheese, Sugars, choice Teas and pure Coffee, Chocolate and Cocoas, Pickles, Sauces, Jams and Jellies, Spices, Herbs, Soups, Meats, Preserved Vegetables, Sardines and Fish, Fruits, in variety, Havana Cigars, Virginia Tobacco, and a long list of the usual

## ITALIAN WAREHOUSE GOODS.

Orders from the country solicited. Goods forwarded promptly C. O. D.

1566





# EXHIBITION.



## BOOTS, SHOES AND SLIPPERS.

Men's, Women's,

Boys' and Girls'.

---

THE LARGEST AND BEST ASSORTED STOCK  
IN TOWN.

---

TO BE SOLD AT  
WHOLESALE PRICES  
FOR CASH.

**W. C. BRENNAN,**  
162 Granville Street, Halifax.

MAR  
THE LAB  
IN

Differ

M A  
To

Prices  
sin

Agent for

A

sole A

NAT

AUSC

Repr

Fir

Ins  
Resid

OFFIC

## MARBLEIZED SLATE MANTLES AND REGISTER GRATES.

THE LARGEST ASSORTMENT  
IN THE PROVINCE.

16

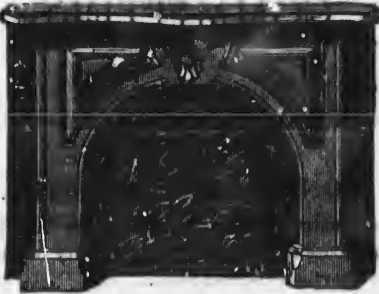
Different Styles and  
Colors of

**MANTLES**

To select from.

Prices Reduced 15 p. c.  
since last year.

Agent for WINDSOR FOUNDRY.



STOVES,  
SHIPS' CASTINGS,  
Foundry  
Supplies.

**J. E. WILSON,**  
245 & 247  
Hollis Street,  
HALIFAX.

## AUSTEN BROTHERS,

124 HOLLIS STREET, HALIFAX, N. S.

Railway, Colliery and Mill Supplies.

Sole Agents for the Celebrated "VALVOLINE" Cylinder, Engine and Machinery Oils.  
E. MACKENZIE'S STAR Metal Bearings.

ROBT. BISHOP'S White, Colored, and Stocking WASTES.  
NATIONAL TUBE WORKS—Wrought Iron PIPE, BOILER TUBES AND FITTINGS,  
PANTON, TATE & CO., Turbine and Leaf WATER WHEELS.  
PORTABLE FORGES & HAND BLOWERS.

A LARGE STOCK OF ALL THE ABOVE ON HAND.

ALSO—Rubber and Leather Belting, Rubber and other Packings, Rubber and other Hose,  
Saws, Files, Emery Wheels, Babbitt Metal, Albany Grease, Carriage Axles and  
Springs, Lanterns, Miners' Lamps, &c., &c., &c. **ORDERS SOLICITED.**

## ROYAL

### INSURANCE COMPANY, OF LIVERPOOL, ENGLAND.

Representing the Largest Net Surplus of any Fire Insurance  
Company in the World.

## LONDON & LANCASHIRE

Fire Insurance Company, of Liverpool, England.

**CAPITAL AND RESERVE FUND, \$10,000,000.**

(Does a Fire Insurance Business only.)

Insurance effected on every description of property at Current Rates.

Residences, Public Buildings and Churches Insured on Specially Favorable Terms.  
for One or Three years.

**LOSSES PROMPTLY PAID WITHOUT REFERENCE TO THE HEAD OFFICE.**

OFFICE—

**O. J. SPIKE,**

} General Agent for  
Nova Scotia and P. E. Island.

CORNER HOLLIS AND SACKVILLE STREETS, HALIFAX, N. S.

## COMMITTEES.

### CHAIRMAN :

HIS WORSHIP STEPHEN TOBIN, MAYOR OF HALIFAX.

### HONORARY COMMITTEE.

Members of the Senate of Canada, resident in the City of Halifax.  
 Members of the House of Commons for the County of Halifax.  
 Members of the Provincial Government.  
 Members of the Legislative Council residing in the County of Halifax.  
 Members of the Local Legislature for the County of Halifax.

### GENERAL COMMITTEE.

#### CHAIRMAN :

HIS WORSHIP STEPHEN TOBIN, MAYOR OF HALIFAX.

#### VICE CHAIRMAN :

HON. JOHN F. STAIRS, M. E. C., M. P. P.

Alderman Clay,	J. N. Ritchie, Esq.,
“ Fraser,	D. Keith, Esq.,
“ Mackintosh.	A. H. Crowe, Esq.,
“ Murray,	J. E. Chipman, Esq.,
“ Trennamen,	Thomas Spelman, Esq.,
“ Hesslein,	Edward Farrell, Esq., M. D.,
“ Murphy,	William Rhind, Esq.,
“ Sanford,	Geo. McLellan, Esq.,
“ Connolly,	Robt. O’Mullin, Esq.,
“ Chipman,	Wm. Roche, Jr., Esq.,
“ Walsh,	Peter Hegan, Esq.,
“ O’Connor,	John McInnes, Esq.,
“ Houlette,	Dan’l Sullivan, Esq.,
“ Woodill,	Wm. J. Veith, Esq.,
“ Graham,	Rod’k McDonald, Esq.,
“ Nisbett,	Willoughby Anderson, Esq.,
“ McPherson,	Halifax Co. Agricultural Society,
“ Story,	Andrew Downs, Esq.,
	N. S. Poultry Association.

TREASURER.....Alderman J. C. Mackintosh.  
 SECRETARY.....William McKerron.

### EXECUTIVE COMMITTEE.

HIS WORSHIP MAYOR TOBIN.....Chairman.

Alderman Clay,	Hon. J. F. Stairs,
“ Murray,	A. H. Crowe, Esq.,
“ Connolly,	W. Anderson, Esq.,
“ Walsh,	A. Downs, Esq.,
“ Graham,	Dr. Farrell,
“ Nislet,	J. E. Chipman, Esq.

## GENERAL REGULATIONS.

---

1. The Exhibition grounds and buildings will be opened on Monday, September 20th, at 7 o'clock, a. m., and continue open during the day till sunset, for the reception and arrangement of exhibition articles and animals. Exhibitors on arrival will immediately report themselves at the office of the Secretary, who, with the assistance of the Committee of Management, will allot appropriate pens or space for their exhibits. This day none but members of the General Committee, officials, exhibitors and necessary attendants will be admitted.

2. Live animals, flowers, and perishable articles will be received on Tuesday morning from sunrise up to 9 o'clock, unavoidable delays to be dealt with at the discretion of the Committee.

3. The Exhibition will be opened formally to the public on Tuesday, September 21st, at 2 o'clock, p. m. The grounds and building will be open each succeeding day to visitors from 9 a. m. to 6 p. m. after which the main Exhibition Building only will remain open till 10 p. m. Admission 25 cents; children, 10 cents. Bands of music will be in attendance daily. The cattle yards will be closed to the public every evening at sunset.

4. The judges will meet at the Secretary's office on Tuesday, September 21st, at 9 a. m., to obtain entry books and proceed to award premiums. On completing their work, which must be finished by Wednesday noon, they will personally show their books to the Secretary, and will be furnished with the requisite prize tickets, which it will be their duty to place carefully, and as soon as possible, upon the various articles, before giving up their books and report.

5. Exhibits may be removed from the grounds on Friday afternoon, September 24th, at 3 o'clock, immediately after the closing ceremonies. The Treasurer will commence to pay premiums on the grounds at 9 a. m., on Friday. Prizes not claimed within three months from the close of the Exhibition will be forfeited.

6. Every intending competitor, must transmit to the Secretary, not later than the dates mentioned below, an entry paper, containing a correct list of the animals or articles which he intends to exhibit, together with certificate of pedigree, in the case of thoroughbred stock, or else a reference to the registry numbers of the New Nova Scotia Stock Register. Any competitor failing to transmit his entry certificate at the proper time will be excluded from competition. No fee is charged for the entry of animals or articles. In Class II, no animal will be accepted as thoroughbred unless actually registered in the New Nova Scotia Herd Book Register, or certified by the

Executive Committee of the Board of Agriculture, as duly qualified for entry.

7. Horses, cattle, sheep, swine and poultry must be entered on or before Saturday, September 4th, three weeks preceding the show, and the age of each animal should be stated in years and months, at date of exhibition; the precise date of birth to be given when necessary.

8. Plants and flowers, fruit, grain, roots, vegetables and other field and garden products, agricultural implements and manufactures of all kinds, and articles not elsewhere enumerated, may be entered up to Saturday, September 11th, one clear week preceding the show.

9. Exhibitors of bulky articles, requiring extensive accommodation, must communicate with the Secretary on or before Monday, September 6th, stating what space they will require, in order that there may be time for the committee to make the requisite arrangements.

10. All articles for exhibition must be on the grounds on Monday, September 20th, after which day none will be received, except live stock, fruit, flowers and other perishable articles, which will be received up to 9 a. m. on Tuesday, September 21st. All necessary erections, and bulky articles requiring to be put together on the grounds or in the buildings, must be finished, and all waste material and rubbish removed, not later than 12 o'clock, noon, on Saturday, September 18th, as no such work can be permitted during the show week.

11. Exhibitors will, in every case, give the necessary personal attention to whatever they exhibit. Necessary attendants upon live stock, and workmen actually required to attend to machinery, will be furnished with admission tickets (price 25 cents) with their names written upon them, which tickets will be good at the *Exhibitors' gate only*, during the show, such tickets to be obtained from the Secretary, by personal application.

12. All articles for competition shall be the production or manufacture of the exhibitor; field produce must be the growth of 1880, except where otherwise specified; and all live stock must have been owned and kept by the exhibitor in the Province not less than three months prior to the exhibition.

13. All expenses incurred for the conveyance of articles or animals, to and from Halifax, placing them in the exhibition, and maintaining them while there, shall be borne by the exhibitors, who must likewise undertake all risk of loss or damage. Articles must, in every case, be delivered and unpacked free of expense to the committee.

14. In Class IX, and for all miscellaneous exhibits, similar to those embraced in this class, "delivery checks," will be furnished, when such articles are given in charge of exhibition officials, and no such exhibits can be removed from the building, unless these "delivery checks" are presented to those in charge of the department.

15. Each exhibitor will receive from the Secretary, an entry ticket for every article to be exhibited by him, and he is required to affix such ticket upon the article or animal which he exhibits, or on the stalls.

16. When fewer than three competitors appear for any prize, and where the articles exhibited are not of superior merit, the judges shall have the discretionary power of awarding or withholding prizes, or reducing their values. No article can take two prizes, or be exhibited in two collections, unless the contrary is distinctly expressed in the prize list. In estimating the merits of live stock, the judges are requested to take age into consideration, where animals of different ages are competing against each other.

17. The committee are required to reject articles which they may consider unworthy or unfit for exhibition.

18. No person shall be allowed to enter for exhibition, more than one specimen (or required quantity) in any one section. This rule is not to apply to animals.

19. During the exhibition, all vegetable products and manufactured articles shall be under the control of the Exhibition Superintendents, and all live stock shall be taken charge of by their owners, the Superintendents giving all practicable assistance in providing the necessary accommodations and food. Hay, straw, oats and roots will be supplied on the grounds, at reasonable prices, and there will be a free supply of water.

20. All articles exposed for sale, shall have the prices fixed, and be sold by the owners, or by parties appointed by them for that purpose. No auctioneer will be allowed to sell animals or articles on the grounds, or in the building, without the written permission of the Chairman or Secretary of the Exhibition Committee, and the time and place of sale, specified in such permission, must be strictly adhered to.

21. Articles and animals sent for competition or exhibition, shall not be removed from the exhibition rooms or grounds till the time appointed, under forfeiture of any prizes or awards that may have been made to their respective exhibitors.

22. Any person who shall attempt to interfere with the judges while in the discharge of their duties, or who shall attempt to influence their decisions, by his presence or remarks, or who shall afterwards, within the limits of the show grounds, use any contemptuous or abusive language in consequence of any award made, shall forfeit his right to any premiums to which he might otherwise be entitled, and be otherwise dealt with as the committee may determine.

23. Any exhibitor who may feel aggrieved in consequence of any irregularity, is requested simply to draw the attention of the Committee of the Department, or of some member of the General Committee, to such, without entering into any discussion apt to cause hindrance or distraction. Should he not receive what he may consider sufficient redress on the spot, he must, nevertheless, abide by the decision given. but he may, at the close of the exhibition, bring the matter before the committee, by written statement, with a view to full enquiry.

24. No animal can be admitted within the enclosure, that has not been previously entered, in accordance with the regulations 6 and 7, and animals of

an inferior character, unworthy of a place in the exhibition, will not be admitted under any circumstances.

25. Space will be provided for any article that may be forwarded for exhibition, subject to approval of committee, apart from such as are mentioned in the prize list. Awards of merit will be given for such, all of which exhibits must be entered on the Secretary's book, in the manner prescribed for those that come within the prize list.

26. Exhibitors must supply themselves with proper fastenings, for safely securing the animals in their stalls. All bulls must have nose rings.

27. Arrangements will be made by the railway to discharge live stock and other exhibits for Provincial Exhibition at North Street Station. Exhibitors must be prepared to take them directly from the cars on arrival. The direct route from the Railway Station, is up North Street to Robie Street, thence south along Robie Street to the Exhibition grounds.

28. No person shall be permitted, under any circumstances, to compete for prizes, as an exhibitor, in the same section in which he acts as a judge, and any one so acting shall forfeit *all awards* that may be made to him, at the exhibition.

PH

IN  
account  
to awa  
Col  
in sec  
pete i

THO  
H  
Section

1. B

2. B

3. B

TR

4. B

5. B

6.

# PRIZE LIST

## PROVINCIAL EXHIBITION

### 1880.

#### Class 1.—Horses.

IN awarding prizes for horses, the judges are requested to take into account, the age, size, training, style and soundness, as well as breed, and not to award any prize unless they consider the animal worthy of it.

Colts exhibited with their dams in sections 3, 7, 18, are eligible to compete in sections 14, 23; but no other animal in this class will be allowed to compete in more than one section.

#### THOROUGHbred HORSES, i. e. Horses with stud book pedigree.

Section.

1. Best thoroughbred stallion, 4 years old and upwards,	\$25 00
2nd do do	20 00
2. Best thoroughbred stallion under 4 years,	20 00
2nd do do	15 00
3. Best thoroughbred brood mare and colt (or evidence that a colt has been reared)	25 00
2nd do do	20 00
3rd do do	15 00

#### TROTting, CARRIAGE AND SADDLE HORSES.

4. Best stallion to breed horses for trotting, carriage or road, 4 years old and upwards, to be shown in carriage,	25 00
2nd do do	20 00
3rd do do	15 00
5. Best stallion to breed horses for trotting, carriage or road, 3 years old and under 4	15 00
2nd do do	12 50
3rd do do	7 50
6. Best stallion to breed horses for trotting, carriage or road, 2 years old,	10 00
2nd do do	7 50
3rd do do	6 00

Section.

7. Best brood mare and colt (or evidence that a colt has been reared) for breeding horses for trotting, carriage or road, to be shown in carriage	\$25 00
2nd do do	20 00
3rd do do	15 00
8. Best saddle horse, mare or gelding, under saddle,	15 00
2nd do do	12 50
3rd do do	10 00
9. Best pair carriage horses, in carriage, both to be the <i>bona fide</i> property of the exhibitor,	25 00
2nd do do	17 50
3rd do do	12 50
10. Best single carriage horse, not one of a pair, driven in carriage,	15 00
2nd do do	12 00
3rd do do	8 00
11. Best colt (not a stallion) for trotting, carriage or road, 3 years old, shown in halter,	12 50
2nd do do	10 00
3rd do do	6 00
12. Best colt (not a stallion) for trotting, carriage or road, 2 years old, shown in halter,	10 00
2nd do do	8 00
3rd do do	5 00
13. Best colt (not a stallion) for	



Section			
	trotting, carriage or road, 1		
	year old, shown in halter,	\$8 00	
2nd	do do do	6 00	
3rd	do do do	4 00	
14.	Best sucking colt, for trotting, carriage or road,		
	2nd do do	7 00	
	2nd do do	5 00	
	3rd do do	4 00	

### AGRICULTURAL AND DRAFT HORSES.

15.	Best stallion to breed horses for agricultural and draft purposes, 4 years old and upwards,	25 00
	2nd do do	20 00
	3rd do do	15 00
16.	Best stallion to breed horses for agricultural and draft purposes, 3 years and under 4,	15 00
	2nd do do	12 00
	3rd do do	6 00
17.	Best stallion to breed horses for agricultural and draft purposes, 2 years old,	9 00
	2nd do do	7 00
	3rd do do	5 00
18.	Best brood mare and colt (or	

Section			
	evidence that a colt has been reared) for breeding horses for agricultural and draft purposes, to be tested	\$20 00	
2nd	do do do	15 00	
3rd	do do do	12 00	
4th	do do do	9 00	
19.	Best pair draft horses, both to be the <i>bona fide</i> property of the exhibitor,	25 00	
	2nd do do	20 00	
	3rd do do	15 00	
20.	Best colt (not a stallion) for draft purposes, 3 years old, shown in halter,	10 00	
	2nd do do	8 00	
	3rd do do	6 00	
21.	Best colt (not a stallion) for draft purposes, 2 years old, shown in halter,	9 00	
	2nd do do	7 00	
	3rd do do	5 00	
22.	Best colt (not a stallion) for draft purposes, 1 year old, shown in halter,	8 00	
	2nd do do	6 00	
23.	Best sucking colt for draft purposes,	6 00	
	2nd do do	4 00	
	3rd do do	3 00	

## Class 2.—Cattle.

Thoroughbred stock, certified pedigree, registered in New Nova Scotia Herd Book, or certified by the Executive Committee of the Central Board of Agriculture, as duly qualified for entry.

No cow (except fat) will be allowed to compete, unless in milk, or with calf, or evidence that she has had a calf within twelve months.

### SHORT HORN DURHAMS.

BULLS.				COWS.			
Section.				Section			
1.	Best thoroughbred Durham bull, 3 yrs old and upwards,	\$15 00		5.	Best thoroughbred Durham cow	\$15 00	
	2nd do do	10 00			2nd do do	10 00	
2.	Best thoroughbred Durham bull, 2 years old	12 50		6.	Best thoroughbred Durham heifer, 2 years old	10 00	
	2nd do do	8 00			2nd do do	8 00	
3.	Best thoroughbred Durham bull, 1 year old	8 00		7.	Best thoroughbred Durham heifer, 1 year old	7 00	
	2nd do do	6 00			2nd do do	5 00	
4.	Best thoroughbred Durham bull calf, under one year	7 00		3.	Best thoroughbred Durham heifer calf, under 1 year	7 00	
	2nd do do	5 00			2nd do do	5 00	

Section

AYRSHIRES.

BULLS.

- 9. Best thoroughbred Ayrshire bull, 3 years old, and upwards \$15 00  
2nd do do 10 00
- 10. Best thoroughbred Ayrshire bull, 2 years old 12 50  
2nd do do 8 00
- 11. Best thoroughbred Ayrshire bull, 1 year old 8 00  
2nd do do 6 00
- 12. Best thoroughbred Ayrshire bull calf, under 1 year 7 00  
2nd do do 5 00

COWS.

- 13. Best thoroughbred Ayrshire cow 15 00  
2nd do do 10 00
- 14. Best thoroughbred Ayrshire heifer, 2 years old 10 00  
2nd do do 6 00
- 15. Best thoroughbred Ayrshire heifer, 1 year old 7 00  
2nd do do 5 00
- 16. Best thoroughbred Ayrshire heifer calf, under one year 7 00  
2nd do do 5 00

DEVONS.

BULLS.

- 17. Best thoroughbred Devon bull, 3 years old and upwards 15 00  
2nd do do 10 00
- 18. Best thoroughbred Devon bull, 2 years old 12 50  
2nd do do 8 00
- 19. Best thoroughbred Devon bull, 1 year old 8 00  
2nd do do 6 00
- 20. Best thoroughbred Devon bull calf, under 1 year 7 00  
2nd do do 5 00

COWS.

- 21. Best thoroughbred Devon cow 15 00  
2nd do do 10 00
- 22. Best thoroughbred Devon heifer, 2 years old 10 00  
2nd do do 6 00
- 23. Best thoroughbred Devon heifer, 1 year old 7 00  
2nd do do 5 00
- 24. Best thoroughbred Devon heifer calf, under 1 year 7 00  
2nd do do 5 00

Section

JERSEYS.

BULLS.

- 25. Best thoroughbred Jersey bull, 3 years old and upwards \$15 00  
2nd do do 10 00
- 26. Best thoroughbred Jersey bull, 2 years old 12 00  
2nd do do 8 00
- 27. Best thoroughbred Jersey bull, 1 year old 8 00  
2nd do do 6 00
- 28. Best thoroughbred Jersey bull calf, under 1 year 7 00  
2nd do do 5 00

COWS.

- 29. Best thoroughbred Jersey cow 15 00  
2nd do do 10 00
- 30. Best thoroughbred Jersey heifer, 2 years old 10 00  
2nd do do 6 00
- 31. Best thoroughbred Jersey heifer, 1 year old 7 00  
2nd do do 5 00
- 32. Best thoroughbred Jersey heifer calf, under 1 year 7 00  
2nd do do 5 00

GUERNSEYS.

BULLS.

- 33. Best thoroughbred Guernsey bull, 3 years old and upwards 15 00  
2nd do do 10 00
- 34. Best thoroughbred Guernsey bull, 2 years old 12 00  
2nd do do 8 00
- 35. Best thoroughbred Guernsey bull, 1 year old 8 00  
2nd do do 6 00
- 36. Best thoroughbred Guernsey bull calf, under 1 year 7 00  
2nd do do 5 00

COWS.

- 37. Best thoroughbred Guernsey cow 15 00  
2nd do do 10 00
- 38. Best thoroughbred Guernsey heifer, 2 years old 10 00  
2nd do do 6 00
- 39. Best thoroughbred Guernsey heifer, 1 year old 7 00  
2nd do do 5 00
- 40. Best thoroughbred Guernsey heifer calf, under 1 year 7 00  
2nd do do 5 00

DAIRY, BEEF AND WORKING CATTLE.

COWS.			
Section			
41.	Best grade cow, 5 years old and upwards,	\$15 00	
	2nd do do	10 00	
42.	Best grade cow, 3 years old and under 5,	15 00	
	2nd do do	10 00	
43.	Best grade cow, 2 years old and under 3,	10 00	
	2nd do do	6 00	
44.	Best grade heifer, 1 year old and under 2,	8 00	
	2nd do do	6 00	
45.	Best grade heifer calf,	7 00	
	2nd do do	5 00	
46.	Best fat cow or heifer,	15 00	
	2nd do do	10 00	
OXEN.			
47.	Best pair of oxen, largest and fattest,	30 00	
	2nd do do	20 00	
	3rd do do	10 00	
48.	Best single ox or steer, largest and fattest,	15 00	
	2nd do do	10 00	
49.	Best pair of steers, 4 years old, largest and fattest,	20 00	
	2nd do do	15 00	
	3rd do do	10 00	
50.	Best pair of steers, 3 years old, largest and fattest,	15 00	
	2nd do do	10 00	
51.	Best pair of steers, 2 years old,	10 00	
	2nd do do	8 00	
52.	Best pair of steers, 1 year old,	9 00	
	2nd do do	7 00	
53.	Best pair working oxen, to be exhibited in yoke and tested	30 00	
	2nd do do	20 00	

\* Animals of the Cunard and the Collins stock can compete in this section.

SPECIAL GRADES.

The following prizes are offered for grades obtained by the crossing our native cattle with the thoroughbred animals of particular breeds: but any mixture of Shorthorn or Durham blood, will disqualify from competition for these prizes:—

Section			
54.	Best grade Devon cow, 3 yrs old and upwards,	\$10 00	
	2nd do do	8 00	
55.	Best grade Devon cow, 2 yrs old and under 3,	10 00	
	2nd do do	8 00	
56.	Best grade Devon heifer, 1 year old and under 2,	7 00	
	2nd do do	5 00	
57.	Best grade Ayrshire cow, 3 years old and upwards,	12 00	
	2nd do do	8 00	
58.	Best grade Ayrshire cow, 2 years old and under 3,	8 00	
	2nd do do	6 00	
59.	Best grade Ayrshire heifer, 1 year old and under 2,	7 00	
	2nd do do	5 00	
60.	Best grade Jersey cow, 3 yrs old and upwards,	12 00	
	2nd do do	8 00	
61.	Best grade Jersey cow, 2 yrs and under 3,	8 00	
	2nd do do	6 00	
62.	Best grade Jersey heifer, 1 year and under 2,	6 00	
	2nd do do	4 00	
63.*	Best grade Guernsey cow, 3 years old and upwards,	12 00	
	2nd do do	8 00	
64.*	Best grade Guernsey cow, 2 years old and under 3,	8 00	
	2nd do do	6 00	
65.*	Best grade Guernsey heifer, 1 year and under 2,	6 00	
	2nd do do	4 00	

Class 3.—Sheep.

SHORTWOOL—Thoroughbred.

SHROPSHIRE DOWNS.			
Section			
1.	Best ram, 2 shares and over	\$4 00	
	2nd do do	3 00	
2.	Best ram shearling	3 00	

Section			
	2nd do do		2 00
3.	Best ram lamb		3 00
	2nd do do		2 00
4.	Best two ewes, 2 shares and over		4 00
	2nd do do		3 00

Section		\$4 00
5.	Best 2 ewes, shearlings	3 00
	2nd do do	3 00
6.	Best two ewe lambs	2 00
	2nd do do	

SOUTHDOWNS.

7.	Best ram, 2 shares and over	4 00
	2nd do do	3 00
8.	Best ram shearling	4 00
	2nd do do	3 00
9.	Best ram lamb	3 00
	2nd do do	2 00
10.	Best 2 ewes, 2 shears and over	4 00
	2nd do do	3 00
11.	Best 2 ewes, shearlings	4 00
	2nd do do	3 00
12.	Best 2 ewe lambs	3 00
	2nd do do	2 00

LONGWOOL—Thoroughbred.

LEICESTERS.

13.	Best ram, 2 shears and over	4 00
	2nd do do	3 00
14.	Best ram shearling	4 00
	2nd do do	3 00
15.	Best ram lamb	3 00
	2nd do do	2 00
16.	Best 2 ewes, 2 shears and over	4 00
	2nd do do	3 00
17.	Best 2 ewes, shearlings	4 00
	2nd do do	3 00
18.	Best 2 ewe lambs	3 00
	2nd do do	2 00

OTHER THAN LEICESTERS.

Section		\$4 00
19.	Best ram, 2 shears and over	3 00
	2nd do do	4 00
20.	Best ram shearling	3 00
	2nd do do	3 00
21.	Best ram lamb	2 00
	2nd do do	4 00
22.	Best 2 ewes, 2 shears and over	3 00
	2nd do do	4 00
23.	Best 2 ewes, shearlings	3 00
	2nd do do	3 00
24.	Best 2 ewe lambs	3 00
	2nd do do	2 00

The judges will be guided by purity of blood, in awarding the above prizes.

GRADES, CROSSES, &c.

25.	Best ram, 2 shears and over	4 00
	2nd do do	3 00
26.	Best ram shearling	4 00
	2nd do do	3 00
27.	Best ram lamb	4 00
	2nd do do	3 00
28.	Best 2 ewes, 2 shears and over	4 00
	2nd do do	3 00
29.	Best 2 ewes, shearlings	4 00
	2nd do do	3 00
30.	Best 2 ewe lambs	4 00
	2nd do do	3 00
31.	Best 2 wethers, not over three shears	4 00
	2nd do do	3 00

Class 4.—Swine.

BERKSHIRE—Thoroughbred.

Section		\$5 00
1.	Best boar, 2 years and over	4 00
2.	Best boar, 1 year and under 2	3 00
3.	Best boar, under 1 year	5 00
4.	Best sow, 2 years and over	4 00
5.	Best sow, 1 year and under 2	3 00
6.	Best sow, under 1 year	9 00
7.	Best breeding sow and litter (not less than 5 pigs)	

WHITE YORKSHIRE OR ELLESMERE.

8.	Best boar, 2 years and over	5 00
9.	Best boar, 1 year and under 2	4 00
10.	Best boar, under 1 year	3 00
11.	Best sow, 2 years and over	5 00

Section		\$4 00
12.	Best sow, 1 year and under 2	3 00
13.	Best sow, under 1 year	9 00
14.	Best breeding sow and litter (not less than 5 pigs)	

ALL OTHER BREEDS AND CROSSES.

15.	Best boar, 2 years and over	4 00
16.	Best boar, 1 year and under 2	3 00
17.	Best boar, under 1 year	2 00
18.	Best sow, 2 years and over	4 00
19.	Best sow, 1 year and under 2	3 00
20.	Best sow, under 1 year	2 00
21.	Best fat hog	7 00
22.	Best breeding sow and litter (not less than 5 pigs)	9 00

### Class 5.—Poultry.

Old birds (hatched previous to 1880) to be shown in pairs, one male and one female; chickens (hatched in 1880) in collections of not less than 2 pairs. The exhibitors of poultry must attend to feeding, watering and cleaning, as in the case of other live stock.

Section	1st.	2nd.	Section.	1st.	2nd.
1. Bronze turkeys	\$5 00	\$3 00	34. do do chickens	\$2 50	\$1 50
2. do do chicken	2 50	1 50	35. do spangled do	2 50	1 50
3. Any other variety of turkey	5 00	2 50	36. do do chickens	2 50	1 50
4. do do chicken	2 50	1 50	37. Golden penciled do	2 50	1 50
5. Domestic geese	3 00	1 50	38. do do chickens	2 50	1 50
6. Wild do	3 00	1 50	39. do spangled do	2 50	1 50
7. Aylesbury Ducks	2 50	1 50	40. do do chickens	2 50	1 50
8. Pekin do	2 50	1 50	41. Black Hamburgs	2 50	1 50
9. Rouen do	2 50	1 50	42. do do chickens	2 50	1 50
10. Any other variety of duck	2 50	1 50	43. White Polish	2 50	1 50
11. Light Brahma	2 50	1 50	44. do do chickens	2 50	1 50
12. do do chicken	2 50	1 50	45. White crested black Polish	2 50	1 50
13. Dark do	2 50	1 50	46. do do do chickens	2 50	1 50
14. do do chickens	2 50	1 50	47. Golden Polish	2 50	1 50
15. Buff Couchins	2 50	1 50	48. do do chickens	2 50	1 50
16. do do chickens	2 50	1 50	49. Black Java fowl	2 50	1 50
17. Partridge do	2 50	1 50	50. do do chickens	2 50	1 50
18. do do chickens	2 50	1 50	51. Plymouth Rocks	2 50	1 50
19. Black do	2 50	1 50	52. do do chickens	2 50	1 50
20. do do chickens	2 50	1 50	53. Dominiques	2 50	1 50
21. Houdans	2 50	1 50	54. do chickens	2 50	1 50
22. do chickens	2 50	1 50	55. Dorkings—any variety	2 50	1 50
23. White face black Spanish	2 50	1 50	56. do do chickens	2 50	1 50
24. do do chickens	2 50	1 50	57. Game bantams, any variety	1 50	1 00
25. White Leghorns	2 50	1 50	58. do do chickens	1 50	1 00
26. do do chickens	2 50	1 50	59. Black do	1 50	1 00
27. Brown do	2 50	1 50	60. do do chickens	1 50	1 00
28. do do chickens	2 50	1 50	61. Guinea fowl	2 00	1 00
29. Black red games	2 50	1 50	62. Pheasants, any variety	2 50	
30. do do do chickens	2 50	1 50	63. Pigeons, collection not less than 8	4 00	3 00
31. Brown do do	2 50	1 50			
32. do do do chickens	2 50	1 50			
33. Silver pencil'd Hamburgs	2 50	1 50			

### Class 6.—Roots and Vegetables.

Roots must be cleaned and topped, and surplus roots and fibres removed before being taken to the grounds, or building. Potatoes must be exhibited in half bushel baskets, which will be furnished by the committee.

Judges must take into consideration the perfection of the growth of roots, and not size alone.

Section	POTATOES		
	1st	2nd	3rd
1. Half bushel Early Rose.....	\$1 50	1 00	75
2. do any other Early.....	1 50	1 00	75
3. do Bresee's Prolific.....	1 50	1 00	75

Section.		POTATOES.		
		1st	2nd	3rd
	4. do	Garnet Chili.....	\$1 50	
	5. do	Jenny Lind.....	1 25	1 00
	6. do	Prince Albert.....	1 25	1 09
	7. do	Snow Flake.....	1 50	1 00
	8. do	Sutton's Red Flour Ball.....	1 25	1 00
	9. do	White Calico.....	1 25	1 00
	10. do	Black do .....	1 25	1 00
	11. do	Jackson White.....	1 25	1 00
	12. do	Leonard.....	1 25	1 00
	13. do	O'Brien.....	1 25	1 00
	14. do	Table not enumerated.....	1 25	1 00
	15. do	Feeding do .....	1 25	1 00
	16.	To be awarded by the Judges at their discretion for other sorts not named in the foregoing list .....	3 00	
	17.	Four kinds, half bushel each sort, for table and stock use, varieties to be named, from a field of same not less than 3 acres. Size of field to be certified by a member of the Board of Agriculture, or a Justice of the Peace.....	4 00	2 00 1 50
	18.	Collection of Roots other than potatoes, 6 of each sort, from a field of the same not less than one acre. Size of field to be certified by a member of the Board of Agriculture, or a Justice of the Peace.....	4 00	2 00 1 50
	19.	6 Swedish Turnips, green top.....	1 25	1 00 50
	20.	6 do do purple top.....	1 25	1 00 50
	21.	6 do do not enumerated .....	1 25	1 00 50
	22.	6 Aberdeen, yellow .....	1 00	50
	23.	6 largest and best, soft (for feed), not enumerated .....	1 25	1 00 50
	24.	6 turnip-rooted Mangel Wurzel .....	1 25	1 00 50
	25.	6 long red do .....	1 25	1 00 50
	26.	orange globe do .....	1 50	1 00 50
	27.	1 dozen White Sugar Beets .....	1 25	75
	28.	6 Kohl-rabi.....	1 25	75
	29.	1 dozen Altringham Carrots .....	1 25	75
	30.	1 do long Orange do .....	1 25	75
	31.	1 do Early Horn do .....	1 25	75
	32.	1 do James's Intermediate do .....	1 25	75
	33.	1 do White Belgian do .....	1 25	75
	34.	1 do any variety do, not enumerated .....	1 25	75
	35.	1 do Egyptian Beets, turnip-rooted, for table use.....	1 25	75
	36.	1 do Wyatt's Black Beets, for table use .....	1 25	75
	37.	1 do Long Blood Beets (true), for table use.....	1 25	75
	38.	1 do turnip-rooted Black Beets, for table use .....	1 25	75
	39.	1 do Table Parsnips .....	1 00	50
	40.	1 do Feeding do .....	1 00	50
	41.	1 half dozen Winter Radishes.....	1 00	50
	42.	1 dozen Salsify .....	1 00	50
	43.	1 do Scorzonera.....	0 75	50
	44.	1 do Root Artichokes.....	1 25	75
	45.	1 do Danvers Onions .....	1 25	75
	46.	1 do White do .....	1 25	75
	47.	1 do Red do .....	1 25	75
	48.	1 do Potato do .....	1 25	75
	49.	1 do Onions other varieties .....	1 25	75
	50.	1 do Eschallots .....	1 00	30
	51.	1 half dozen Leeks.....	75	50
	52.	1 dozen Garlic .....	1 25	1 00
	53.	6 heads White Solid Celery.....	1 25	1 00
	54.	6 do Red do .....	1 25	75
	55.	3 do Drum Head Cabbage.....	1 25	

male and  
an 2 pairs.  
ning, as in

1st. 2nd.  
2 50 \$1 50  
2 50 1 50  
2 50 1 50  
2 50 1 50  
2 50 1 50  
2 50 1 50  
2 50 1 50  
2 50 1 50  
2 50 1 50  
2 50 1 50

2 50 1 50  
2 50 1 50  
2 50 1 50  
2 50 1 50  
2 50 1 50  
2 50 1 50  
2 50 1 50  
2 50 1 50  
2 50 1 50  
2 50 1 50  
2 50 1 50  
2 50 1 50

50 1 00  
50 1 00  
50 1 00  
50 1 00  
00 1 00  
50  
00 3 00

removed  
exhibited  
of roots.

3rd  
75  
75  
75

	1st	2d	3rd
56. 3 do Savoy.....	1 25	75	
57. 3 do Red Cabbage.....	1 25	75	
58. 2 do Cabbage any other sort .....	1 25	75	
59. 3 stalks Brussels Sprouts.....	1 25	75	
60. 3 heads Cauliflower .....	1 50	1 00	
61. 1 dozen best Tomatoes (with name of variety).....	1 00	75	50
62. 1 do Yellow do do .....	1 00	75	50
63. 1/2 do new variety do .....	1 00	50	
64. brace Water Melons.....	1 25	75	
65. do Citron do .....	1 25	75	
66. do Musk do .....	1 25	75	
67. 2 Butman Squash .....	1 25	75	50
68. 2 Boston Marrow Squash.....	1 25	75	50
69. 2 Hubbard Squash.....	1 25	75	50
70. 2 Marblehead do .....	1 25	75	50
71. Largest Squash.....	1 50	1 00	50
72. 2 Pumpkins .....	1 00	50	
73. Largest do .....	1 25	75	
74. Brace of Cucumbers.....	1 00	75	

NOTE.—All tomatoes, squashes, and cucumbers must have been grown in the open air without any protection after the 20th June.

### Class 7.—Grain and Field Seeds, Grain Manufactures, &c.

Grains and seeds to be exhibited in boxes to be furnished by the committee.

Grains, so cleaned by smut machines, or otherwise, as, in the opinion of the judges, to impair their vitality, will be disqualified.

Section.	1st	2nd	3rd
1. Collection of wheat, varieties, 1 qrt of thrashed grain, and 12 heads of each sort; the specimens taking the prize to be presented to the Provincial Museum .....	\$4 00	2 00	
2. Bushel of Red Spring Wheat, with name of variety, and specimens of straw and heads .....	3 50	2 50	2 00
3. Bushel of White Spring Wheat, with name of variety, and specimens of straw and heads .....	3 50	2 50	2 00
4. Bushel of Amber Spring Wheat, with name of variety, and specimens of straw and heads .....	3 50	2 50	2 00
5. Bushel Winter Wheat .....	3 00	2 00	1 00
6. do White Oats .....	1 50	1 00	50
7. do Black Oats .....	1 50	1 00	50
8. do Yellow Oats .....	1 50		
9. do any new and improved oats .....	2 00	1 00	50
10. do Barley .....	2 00	1 25	
11. do Sicilian Barley .....	1 50		
12. do Annat do .....	1 50	1 00	
13. do Winter Rye.....	1 50	1 00	
14. do Spring do .....	1 50	1 00	
15. do Buckwheat (rough) .....	1 00	50	
16. do do Shepody.....	1 00	50	
17. 12 Ears Indian Corn .....	1 00	50	
18. 15 do Sweet Corn .....	75	50	
19. Half bushel Field Peas (white).....	1 50	1 00	
20. do do (grey).....	1 50	1 00	
21. Peck Pole Beans .....	1 00	50	





## Class 9.—Hemp, Woollen, Flax, and Straw Goods.

MANUFACTURED BY EXHIBITOR.

All articles of Woollen and Flax manufacture shall be the growth and production or manufacture of the year 1879 or 1880.

Section.	1st	2nd	3rd
1. Assortment of Cordage Oakum, &c .....	\$20 00		
2. Not less than 8 yards, all wool dressed and fulled, power loom .....	4 00	\$3 00	\$2 00
3. Not less than 8 yards, all wool, Grey Twilled dressed, power loom .....	4 00	3 00	
4. Assorted lot Tweeds, all wool, power loom .....	10 00	6 00	4 00
5. Not less than 6 yards all wool Grey Twilled undressed, power loom .....	4 00	2 00	1 00
6. Not less than 8 yard all wool, dressed and fulled, hand loom .....	4 00	2 00	1 00
7. Not less than 8 yards all wool Grey Twilled, undressed, hand loom .....	3 00	2 00	1 00
8. 8 yards Women's Wear, plain, hand loom .....	3 00	2 00	1 00
9. 8 do do fancy pattern, cotton and wool, hand loom .....	3 00	2 00	1 00
10. 5 yards White Flannel, all wool, power loom .....	3 00	2 00	1 00
11. 5 do do do hand loom .....	3 00	2 00	1 00
12. 5 do do cotton and wool, hand loom .....	3 00	2 00	1 00
13. Pair of Blankets, all wool, power loom .....	3 00	2 00	1 50
14. Hearth Rug, all native wool .....	3 50	2 50	1 50
15. do do .....	2 50	1 50	1 00
16. Carpet, all wool .....	8 00	6 00	4 00
17. do rag .....	4 00	3 00	1 50
18. 2 Pairs Men's Woollen Socks .....	75	50	
19. 3 do Woollen Stockings .....	75	50	
20. 2 do do Mitts (plain) .....	75	50	
21. 2 do Men's Woollen Mitts (fringed) .....	75	50	
22. 2 do do do Gloves .....	1 00	50	
23. 5 lbs. Woollen Knitting Yarn, white .....	1 50	1 00	
24. 5 do do do grey .....	1 50	1 00	
25. Pair Men's Knitted Woollen Undershirts .....	2 00	1 00	
26. do do do do Drawers .....	2 00	1 00	
27. do do do do Guernseys .....	2 00	1 00	
28. Women's Shawl .....	2 50	1 50	
29. Men's Plaid .....	3 00	1 00	
30. 6 yards Flax Towelling .....	2 50	1 50	
31. 2 Women's Straw Hats .....	1 00	50	
32. 2 Men's do do .....	1 00	50	
33. Set of 6 Table Mats, straw .....	75	50	
34. Fleece, long wool .....	1 50	1 00	
35. do short do .....	1 00	75	
36. Pair Table Cloths, flax, not less than 8 feet by 6 feet .....	3 00	1 50	
37. Lot of 3 Sheep Skin Mats, not plucked, dressed and colored .....	2 00	1 00	
38. 10 yards Linen Sheeting .....	2 50	1 50	1 00

All  
wise s  
all the

Section  
1. B

2.  
3.  
4.  
5.  
6.  
7.  
8.  
9.  
10.  
11.  
12.  
13.  
14.  
15.  
16.  
17.  
18.

To b  
th

19.  
20.  
21.  
22.  
23.  
24.  
25.  
26.  
27.  
28.  
29.  
30.  
31.  
32.  
33.  
34.  
35.  
36.  
37.  
38.

## Class 10.—Fruits.

All fruit must be exhibited in the name of the grower, except where otherwise specified; any known violation of this rule, will cause the forfeiture of all the prizes awarded the party infringing it.

Section		Section
APPLES.		
1.	Best GENERAL COLLECTION of Apples from Halifax County, not more than thirty sorts, six of each sort, <i>named and labelled</i> ; the fruit must be grown in the County, but may be the produce of several growers, credit being given to the several growers on the labels.	\$6 00
2.	do from Kings Co.	6 00
3.	do do Annapolis Co.	6 00
4.	do do Digby Co.	6 00
5.	do do Lunenburg Co.	6 00
6.	do do Queens Co.	6 00
7.	do do Shelburne Co.	6 00
8.	do do Yarmouth Co.	6 00
9.	do do Hants Co.	6 00
10.	do do Colechester Co.	6 00
11.	do do Cumberland Co.	6 00
12.	do do Pictou Co.	6 00
13.	do do Antigonish Co.	6 00
14.	do do Guysborough Co.	6 00
15.	do do Cape Breton Co.	6 00
16.	do do Richmond Co.	6 00
17.	do do Inverness Co.	6 00
18.	do do Victoria Co.	6 00

## SINGLE VARIETIES.

To be exhibited on dishes to be furnished by the committee, each containing ten fruit.

	1st	2nd
19. Gravenstein	1 50	1 00
20. Yellow Bellefleur	1 50	1 00
21. King of Tompkins County	1 50	1 00
22. Nonpareil	1 50	1 00
23. Blenheim Pippin	1 50	1 00
24. Grimes' Golden Pippin	1 50	1 00
25. Northern Spy	1 50	1 00
26. Ribston Pippin	1 50	1 00
27. Baldwin	1 50	1 00
28. Rhode Island Greening	1 50	1 00
29. Hubbardston Non-such	1 50	1 00
30. Blue Pearmain	1 25	0 75
31. Emperor Alexander	1 25	0 75
32. Æsopus Spitzenberg	1 25	0 75
33. Marquis of Lorne	1 25	0 75
34. Chenango Strawberry	1 25	0 75
35. Duchess of Oldenburg	1 25	0 75
36. Chebucto Beauty	1 25	0 75
37. Fall Jenetting	1 25	0 75
38. Cabashea, or 20 oz. Pippin	1 25	0 75

Section		Section
39.	Canada Reinette	\$1 25 30 75
40.	Pomme Grise	1 25 0 75
41.	Fameuse or Snow	1 25 0 75
42.	Golden Russet of Western New York	1 25 0 75
43.	Drap D'Or	1 25 0 75
44.	Pound Sweet	1 25 0 75
45.	Gloria Mundi	1 25 0 75
46.	William's Favorite	1 25 0 75
47.	Rhymer Pippin	1 25 0 75
48.	Westfield Seek-no-further	1 25 0 75
49.	King of the Pippins	1 25 0 75
50.	Newtown Pippin	1 25 0 75
51.	Keswick Codling	1 25 0 75
52.	Golden Pippin (English)	1 25 0 50
53.	Cox's Orange Pippin	1 25 0 75
54.	Golden Ball	1 25 0 75
55.	Roxbury Russet	1 25 0 75

## PEARS.

On dishes containing ten fruit each.

56.	Bartlett	1 50	1 00
57.	Clapp's Favorite	1 50	1 00
58.	Beurre Bose	1 50	1 00
59.	Louise Bonne de Jersey	1 50	1 00
60.	Duchesse d'Angouleme	1 50	1 00
61.	Seekel	1 50	1 00
62.	Winter Nelis	1 50	1 00
63.	Great Britain	1 50	1 00
64.	Flemish Beauty	1 50	1 00
65.	Sheldon	1 50	1 00
66.	Frederick of Wurtemberg	1 50	1 00
67.	Beurre d'Anjou	1 50	1 00
68.	Beurre Diel	1 50	1 00
69.	Onondaga	1 50	1 00
70.	Marie Louise	1 50	1 00
71.	Viear of Winkfield	1 50	1 00

## QUINCES.

Same arrangement as Pears.

72.	Orange	1 50	1 25
73.	Pear	1 50	1 25

## CRAB APPLES.

Same arrangement as Pears.

74.	Red Siberian	1 00	0 75
75.	Transecendant	1 00	0 75
76.	Hyslop	1 00	0 75
77.	Montreal Beauty	1 00	0 75

## PLUMS.

	Same arrangement as Pears.	
Section		
78. Six Sorts named.....	\$3 00	\$2 00
79. Three Sorts named.....	2 00	1 00

## PEACHES.

	Same arrangement as Pears.	
80. Grown under Glass.....	3 00	2 00
81. Grown in open air.....	3 00	1 00

## GRAPES.

On dishes, three bunches each.

## OPEN AIR.

82. Isabella.....	1 00	0 75
83. Hartford Prolific.....	1 00	0 75
84. Diana.....	1 00	0 75
85. Concord.....	1 00	0 75
86. Delaware.....	1 00	0 75
87. Black Cluster.....	1 00	0 75
88. Sweet Water.....	1 00	0 75
89. Royal Muscadine.....	1 00	0 75
90. Salem.....	1 00	0 75

## Section

91. Agwan or Rogers.....	\$1 00	\$0 75
92. Israella.....	1 00	0 75
93. Kamelan.....	1 00	0 75
94. Rebecca.....	1 00	0 75

## HOT HOUSE GRAPES.

95. Black Hamburg.....	3 00	2 00
96. Muscat of Alexandria.....	3 00	2 00
97. Frankenthal.....	2 00	1 00

## COLD GRAPERY.

98. Black Hamburg.....	2 00	1 00
99. Any colored Grape, (not black) named.....	2 00	1 00
100. White Grape, any kind, named.....	2 00	1 00

## BERRIES.

101. Quart of Cranberries on a dish, any variety, named.....	1 00	0 50
102. Quart Foreign Blackberries, on a dish, any variety, named.....	1 00	0 50

## Class 11.—Ornamental Plants and Flowers.

Section.	1st	2nd	3rd
1. Stand of mixed Plants on a space of 30 square feet.....	\$12 00	8 00	4 00
2. 3 Stove Plants, in bloom, distinct.....	3 00	2 00	
3. 3 Begonias, distinct varieties.....	3 00	2 00	
4. 3 fine Foliage and Variegated Plants, distinct varieties, not elsewhere enumerated.....	3 00	2 00	
5. 3 Tree Ferns, distinct.....	3 00	2 00	
6. 3 Stove or Greenhouse Ferns, distinct.....	3 00	2 00	
7. 6 Native Ferns, distinct.....	2 50	1 50	
8. 6 Greenhouse Plants, in bloom, distinct, not elsewhere enumerated.....	4 00	3 00	
9. 3 Fuchsias, distinct.....	2 50	1 50	
10. 3 Zonal Geraniums, distinct.....	2 50	1 50	
11. 3 Double Geraniums, distinct.....	2 50	1 50	
12. 3 Gold Tri-color Geraniums, distinct.....	2 50	1 50	
13. 3 Silver Tri-color Geraniums, distinct.....	2 40	1 50	
14. 3 Bronze Geraniums, distinct.....	2 50	1 50	
15. 3 Coleus, distinct.....	2 50	1 50	
16. Hanging pot or basket of Growing Plants.....	2 00	1 50	

## Plants grown by Amateurs in Dwelling Houses.

(Plants grown by Exhibitors.)

17. 6 House Plants, any variety.....	3 00	2 00	1 00
18. 3 do in bloom, any variety.....	3 00	2 00	1 00
19. Fuchsia, in bloom.....	1 50	1 00	50
20. Tri-color Geranium.....	1 50	1 00	50
21. Bronze do.....	1 50	1 00	50
22. House Plant, in bloom.....	1 50	1 00	50
23. Trained Ivy (Hedera).....	2 00	1 00	
24. Extras.....			

CUT BLOOMS.

25. 6 Dahlias distinct.....	\$2 00	\$1 00	
26. 6 Fancy Dahlias, distinct.....	2 00	1 00	
27. 6 Pompone Dahlias, distinct.....	2 00	1 00	
28. 6 Gladiolus, distinct.....	2 00	1 00	
29. 6 Pansies, distinct.....	2 00	1 00	
30. 6 Stocks, distinct.....	2 00	1 00	
31. 6 Phlox Drummondii, distinct, 3 trusses each.....	2 00	1 00	
32. 3 Perennial Phlox, distinct.....	2 00	1 00	
33. 6 Zinnias, distinct.....	2 00	1 00	
34. 6 Verbenas.....	2 00	1 00	
35. 3 Lillies.....	2 00	1 00	
36. 6 Roses.....			
37. Collection of Perennial Plants, named, not to exceed 10 varieties, one specimen of each.....	4 00	3 00	\$1 50
38. Collection of Annual Plants, named, not to exceed 15 varieties one specimen each.....	4 00	3 00	1 50
40. Basket of Cut Flowers, not exceeding 14 inches in diameter.....	3 00	2 00	
41. Hand Bouquet.....	3 00	2 00	
42. Bridal Bouquet.....	3 00	2 00	
43. Table Bouquet.....	3 00	2 00	
44. Floral design, any shape.....	2 00	1 00	
45. Collection of Wild Flowers.....			
46. Extras.....			

Class 12.—Agricultural Implements.

All articles in this class must be *new* implements, not used, or shown at previous Provincial Exhibitions, and entered by, or in the name of the manufacturer, as specimens of his skill and production at the present time; and must have a *bona fide* price attached. Price to be taken into consideration by Judges, as well as quality.

Section.	1st	2nd
1. Iron Plough.....	\$5 00	
2. Wooden Plough, Iron Moulds.....	5 00	
3. do.....	4 00	
4. Double Mould Plough.....	5 00	
5. Plough, Iron Moulds.....	5 00	\$3 00
6. Double Harrow.....	4 00	2 00
7. Disc do.....	4 00	
8. Horse Cultivator.....	5 00	
9. Hand Garden Cultivator.....	3 00	
10. Seed Sower.....	4 00	
11. do broad cast.....	2 00	
12. Hay and Straw Cutter.....	3 00	
13. Wheel Horse Rake.....	5 00	
14. Ox Yoke, Dutch or English.....	2 00	
15. Root Cutter.....	3 00	
16. Fanning Mill.....	4 00	
17. Grain separator.....	5 00	
18. Hand Rakes, not less than half dozen.....	3 00	2 00
19. Hay Forks, not less than half dozen.....	2 00	1 00
20. Manure Forks, not less than three.....	2 00	1 00
21. Hoes, not less than three.....	2 00	1 00
22. Potato Forks, not less than three.....	2 00	1 00
23. Potato Hacks, not less than three.....	2 00	
24. Field Roller.....	5 00	

Section.	1st	2nd
25. Pitching Machine, or horse hay fork .....	\$4 00	
26. Box Cart, two wheels .....	8 00	
27. Wheel Barrow .....	2 00	\$1 00
28. Farm Gate .....	3 00	2 00
29. Portable Engine for Agricultural purposes, not less than 6 H. P., Diploma and .....	25 00	
30. Threshing Machine, small 2 horse, complete.....	10 00	
31. do large, with cleaner, complete .....	12 00	
32. Mowing Machine.....	15 00	
33. Grain Crusher.....	3 00	2 00
34. Wind Power.....	8 00	

### Class 13.—Economic Minerals,

INCLUDING BUILDING STONE, CLAY MANUFACTURES, &C.

Section.	1st	2nd
1 Collection of Gold Specimens.....Diploma		
2 Exhibit of Coal.....Diploma and	\$10 00	
3 Collection of Specimens and Samples illustrating the manufacture of Iron from native Ore.....Diploma and	20 00	
4 Best collection of Building Stone.....Diploma and	10 00	
5 Grindstones, not less than 30 inches diameter, fitted for use.....Diploma and	5 00	
6 Cask or barrel of Burnt Lime, from native limestone, the location of quarry to be stated .....	3 00	
7 Barrel of Calcined Plaster, from native Plaster.....Diploma and	4 00	
8 Barrel of Raw Plaster, ground for agricultural purposes.....	3 00	
9 Exhibit of Native Roofing Slates, not less than one dozen, and not smaller than 18x12 inches.....	3 00	
10 Collection of Common Pressed and Fire Bricks, made by exhibitor..	5 00	3 00
11 Specimen of Drain Tiles.....	2 00	
12 Collection of Pottery.....	5 00	3 00
13 Mantle Piece of Native Marble.....Diploma and	10 00	
14 Specimens of Native Granite, polished, not less than 24x18x12 in....	10 00	
15 Specimen of polished Red Granite, from native quarry, not less than 36x24x12 inches .....	15 00	
16 Barytes specimen, stating where obtained.....Diploma		
17 Manganese do do .....		"
18 Copper Ore do do .....		"
19 Galena do do .....		"
20 Mineral Oils do do .....		"

### Class 14.—Manufactures in Wood.

HOUSE BUILDING MATERIALS.

Section.	
1 Clapboards, bundles of 25 .....	\$2 00
2 Shingles, 1000.....	3 00
3 Pannelled Door .....	4 00
4 Veneered Door.....	6 00
5 Window Sash and Frame .....	2 00
6 Inside Venetian Shutter, 1 set .....	3 00
7 do Panelled do 1 set .....	3 00
8 Assortment of Machine Mouldings, not less than 8 feet in length .....	3 00
9 Best collection of Jig Saw Work, for building purposes.....	5 00
10 Newel Post, full size.....	3 00
11 Smoothest machine planing, in lengths of not less than 6 feet, and not less than 5 kinds of wood.....	2 00

FURNITURE.

Section.	1st	2nd.
12 Drawing Room Suite, with centre table, Diploma &	\$10 00	
13 Bedroom Suite, walnut...	10 00	
14 do do painted ..	5 00	\$3 00
15 Sideboard and Chairs to match .....	10 00	
16 Book Case.....	5 00	
17 Devonport.....	2 00	
18 Fancy Chair .....	4 00	
19 Wardrobe .....	3 00	
20 Office Furniture (set).....	5 00	
21 Wood-bottom Chairs, factory made, not less than half dozen .....	4 00	
22 Cane-bottom Chairs, not less than half dozen....	5 00	
23 Specimen of Cane Work.	3 00	
24 Set of Hall Furniture .....	4 00	
25 School Desk and Seat .....	2 00	

MUSICAL INSTRUMENTS.

26 Grand Piano, Diploma and	30 00
27 Square Piano, do do	20 00
28 Cottage Piano, do do	15 00

Section.	1st	2nd
29 Harmonium or Cabinet Organ do do	\$15 00	

MISCELLANEOUS WOODWARE, ETC.

30 Assortment of Brushes, made by exhibitor....	\$10 00
31 Apple Barrel, with selling price .....	2 00
32 Fish Barrel.....	3 00
33 Nest of Tubs, home made	3 00
34 Dozen Buckets.....	2 00
35 Set Butter Tubs.....	2 00
36 Dozen Brooms .....	2 00
37 Wood Turning.....	3 00
38 Washing Machine .....	2 00
39 Wringer .....	2 00
40 Mangle .....	3 00
41 Churn .....	5 00
42 Dozen Axe Handles.....	3 00
43 House Ladder, not less than 20 feet.....	3 00
44 Step Ladder .....	3 00
45 Lasts, collection.....	4 00
46 Collection of apparatus for Cheese Factory.....	15 00

Class 15.—Carriage Manufactures.

All Carriages to be new, and exhibited by the Builders.

Section	1st	2nd
1 Landau, self-acting head, Diploma and .....	\$20 00	
2 Brougham .....	20 00	
3 Pony Pheaton .....	15 00	
4 Barouche .....	20 00	
5 T Cart, without perch .....	15 00	
6 T Cart, with perch .....	10 00	
7 Top Buggy .....	15 00	
8 Double Waggon, with doors....	15 00	
Section	1st	2nd
9 Single Waggon .....	\$10 00	
10 Open Waggon, two seats .....	12 00	
11 Two-wheeled Dog Cart .....	10 00	
12 Flat Waggon, 4 wheels.....	10 00	
13 Express Waggon, single.....	10 00	
14 Hand Cart .....	3 00	
15 Double Sleigh .....	15 00	
16 Tandem Sleigh .....	12 00	
17 Single Sleigh .....	10 00	

Class 16.—Naval Architecture.

1 Ship's Model, large carrier, new,	\$15 00	
2 do medium do	10 00	
3 Fishing Schooner Model.....	10 00	
4 Yacht Model.....	10 00	
5 Windlass Gear.....	8 00	
6 Capstan.....	8 00	
7 Collection of Blocks .....	10 00	
8 1 dozen Mast Hoops, not less than 20 inches diameter....	2 00	
Section	1st	2nd
9 Collection of Oars .....	5 00	
10 Fishing Dory, full size .....	6 00	
11 do Whaler do .....	10 00	
12 Gig, shell .....	8 00	
13 Wherry .....	5 00	
14 Single Scull .....	10 00	
15 Birch bark Canoe.....	5 00	

## Class 17.—Manufactures in Metal.

Section:	1st	2nd
1 Assorted dozen Patent Skates .....	\$6 00	\$4 00
2 Dozen Chopping Axes.....	4 00	3 00
3 Half dozen Ship or Broad Axes .....	4 00	
4 do Hatchets.....	2 00	
5 Set Framing Chisels .....	3 00	
6 do Finner do .....	3 00	
7 do Bench Plains.....	2 50	
8 Half dozen Draw Knives .....	2 50	
9 One " Fish Splitting Knives .....	1 50	
10 Collection of Edge Tools .....	8 00	
11 Assortment of Blacksmiths, Masons and Miners Hammers, Pickaxes, &c., not less than ½ dozen each.....	10 00	
12 Assortment of Cut Nails and Spikes, 100 lbs of each ..	4 00	
13 Assortment of Bolts and Nuts, all kinds Coach and Wood Screws, 100 of each of small sizes, 50 of each of large sizes.....	5 00	
14 Assortment of Finish Nails, brads and tacks, in brass, iron, steel, copper and zinc .....	5 00	
15 Pair of Carriage Side Springs.....	3 00	
16 do do Elliptic Springs, leaf .....	4 00	
17 Set of Carriage Axes, steel, ½ patent ..	5 00	
18 do do Iron do .....	5 00	
19 do do do common .....	3 00	
20 Pair of Cart Axles .....	3 00	
21 Assortment of Composition Castings for ships, viz., Spikes, Butt Bolts, Dove Tails, &c., rough.....	10 00	
22 Best collection of Brass Hinges and Hasps .....	3 00	
23 Best assortment of Locks, Padlocks and Knobs .....	6 00	
24 Finished Ships Block-Bushings, assortment, ½ dozen each size .....	4 00	
25 Best assortment Ships Bells, plain, and finished.....	3 00	
26 Best collection of Steam Whistles.....	5 00	
27 Assortment finished Cocks and Valves, for Engineers & Plumbers use	6 00	
28 Collection of finished Brass and Composition Goods .....	8 00	
29 Assortment of Gas Fittings and Chandeliers .....	15 00	8 00
30 One pair Ships Side Lights, one Anchor Lantern and one Binnacle Lamp .....	8 00	
31 Street Lamp, for oil .....	3 00	
32 Assortment of Bells and fittings for Houses.....	5 00	
33 Assortment of Sleigh Bells, 3 dozen .....	4 00	
34 One dozen Cow Bells .....	2 50	
35 Assortment of Ships Galvanized iron Sail Clews, ½ dozen ; Jib Hanks, 2½ dozen ; Clip Hooks, ½ dozen ; Blocks, ½ dozen ; Sail Thimbles, 3 dozen, assorted ; Boat Hooks, ½ dozen, &c.....	8 00	
36 Ships Wheel, iron and brass .....	5 00	
37 do Mahogany.....	5 00	
38 Ships Steering Gear .....	10 00	
39 Ships Pumps .....	15 00	
40 Ships Hoisting Winch .....	3 00	
41 Ships Iron Castings, viz., Hawse Pipes, Bits, Rings, &c.....	3 00	
42 Ships Caboose, complete.....	5 00	
43 Collection of Register Grates.....	6 00	
44 Base Burners, for soft coal.....	4 00	
45 do for hard coal .....	4 00	
46 Parlor Stove .....	4 00	
47 Cooking Range Complete .....	8 00	4 00
48 Cooking Stove, for wood.....	4 00	2 00
49 do for coal.....	4 00	2 00
50 Collection of Tinware, for kitchen use.....	3 00	2 00

Section.

51 Ca

52 W

53 H

54 St

55 St

56 M

57 Sh

58 B

59 B

60 B

61 St

62 C

Cl

Section

1 A

2

3

4 C

5

6

7

8

9

10

11

12

13

14

15

16

17

18

19

20

21

Sec

1

2

3

4

5

6

7

8

9

10

11

12

Section.	1st	2nd
51 Cast Iron Sink and Trap .....	\$3 00	
52 Water Closet and Trap .....	3 00	
53 Hot Water Heating Apparatus.....	Diploma and	8 00
54 Steam do do .....	do do	8 00
55 Stationery Steam Engine, not less than 8 inch cylinder ..	do do	30 00
56 Marine Steam Engine, not less than 6 inch cylinder .....	do do	30 00
57 Shafting, hangers and couplings, not less than 8 feet in length or 2½ inches in diameter.....		10 00
58 Best collection of Wood Working Machinery, for power, not less than 3 machines .....	25 00	
59 Best collection of Ornamental and Architectural Iron Work.....	8 00	
60 Best collection Cast Iron Pipes and Valves to suit.....	Diploma and	10 00
61 Steam Pumps, best collection.....	do do	20 00
62 Collection of Manufactured Silversmith and Jeweller's Work.....		20 00

### Class 18. — Manufactures in Leather, Saddlery and Harness.

Section.	1st	2nd
1 Assortment of Ladies' and Gentlemen's Boots, sewed, hand made....	\$8 00	\$5 00
2 do Machine made Boots.....	6 00	4 00
3 do Miners' and Fishermen's Boots.....	6 00	
4 Carriage Harness, couble.....	12 00	
5 do single.....	8 00	
6 Truck Harness.....	6 00	
7 Side of Sole Leather, slaughtered hide.....	3 00	
8 do do Spanish hide.....	3 00	
9 do Grained Neats Leather .....	3 00	
10 do Waxed do do .....	3 00	
11 do Buff do do .....	3 00	
12 do Pebbled Grain do .....	3 00	
13 do Brown Harness do .....	3 00	
14 do Black do do .....	4 00	
15 do Belting do .....	4 00	
16 half dozen Calf Skins, waxed .....	4 00	
17 do do grain .....	2 50	
18 do Sheep Lining, skins, colored roan .....	2 00	
19 do Splits.....	5 00	
20 Collection of Travelling Trunks .....	3 00	
21 do do Valises .....		

### Class 19. — Fisheries.

Section	1st	2nd	3rd
1 Box Dry Codfish (large) .....	\$5 00	\$3 00	
2 do do do (small).....	4 00	2 50	
3 do do Haddock.....	3 00	2 00	
4 do do Hake or Ling.....	3 00	2 00	
5 do do Pollock.....	3 00	2 00	
6 do do Cusk .....	5 00	3 00	
7 5 lb. Dry Hake Sounds.....	5 00	3 00	
8 Barrel Codfish Roe .....	2 00	1 00	
9 Box No. 1 Digby Herring .....	2 00	1 00	
10 do do do do (scaled).....	8 00	5 00	3 00
11 Barrel No. 1 Mackerel .....	6 00	3 00	2 00
12 do do 2 do .....			



Section		1st	2nd	3rd
13	do do do do			
14	do do 3 do (large)	\$4 00	\$3 00	\$2 00
15	do No. 1 Split Herring	4 00	3 00	2 00
16	do do Round Herring	3 00	2 00	1 50
17	do do Salmon	3 00	2 00	1 50
18	do do Trout	8 00	4 00	3 00
19	do do Shad	6 00	3 00	2 00
20	do do Alewives	6 00	3 00	2 00
21	Case Canned Lobsters	3 00	2 00	1 00
22	do do Salmon	8 00	5 00	3 00
23	Gallon Cod Oil	6 00	4 00	3 00
24	do Dog do	1 50	1 00	
25	do Whale do	1 50	1 00	
26	Bottle Cod Liver Oil (pure)	1 50	1 00	
27	One Mackerel Barrel, standard measure	2 00	1 50	
28	do Herring do do do	2 00	1 00	
29	One Half Barrel, do do	2 00	1 00	
30	One Hard Wood Cask, 4 qtls	1 50	1 00	
31	One Soft do do do	1 50	1 00	
32	Pair Fish Barrows	1 50	1 00	
33	Salt Cart	2 00	1 00	
34	Bait Mill	5 00	3 00	
35	Lobster Trap	5 00	3 00	
		3 00	2 00	

Class 20.—Furs.

Section 1	Collection of Furs, dressed or manufactured	\$30 00	20 00
-----------	---	---------	-------

Class 21.—Preserved Meats, &c.

Section.		1st	2nd
1	Barrel of Pork	\$4 00	3 00
2	Barrel of Beef	4 00	3 00
3	Ham	3 00	2 00
4	Side of Bacon	3 00	2 00
5	Canned Beef, 20 lbs, in cans of the various sizes	5 00	
6	Assortment of Confectionery	5 00	4 00
7	Assortment of Preserved Fruits	5 00	4 00
8	Lard in tins, various sizes	2 00	1 00

Class 22.—Fine Arts.

Section		
1	Assorted specimens of Graining, in imitation of stone or wood	\$5 00
2	Oil Painting, landscape, from nature	5 00
3	Oil Painting, portrait	5 00
4	Water Color Painting, portrait	5 00
5	Pencil Drawing	5 00
6	Crayon Drawing	5 00
7	Sepia Drawing	5 00
	Architectural Drawing, shade lines	5 00

Section.		
9	Machine Drawing .....	\$5 00
10	Drawing in Naval Architecture.....	5 00
11	Collection of Photographs, work of exhibitor.....	10 00
12	Collection of twelve views of Public Buildings in the City of Halifax, cabinet size, or larger.....	10 00

### Class 23. — Ladies' Work.

Section:	1st	2nd	Section.	1st	2nd
1	Group of Wax Flowers under glass.....	\$4 00 \$3 00	6	Specimen of Muslin do	\$3 00 \$2 00
2	Piece of Berlin Wool Work	5 00 3 00	7	Collection of Hair Work...	3 00
3	Specimen of Crochet Work	3 00 2 00	8	Collection of Leather Work	3 00
4	Specimen of Lace Work ...	3 00 2 00	9	Collection of Fret Work...	3 00
5	Specimen of Silk Embroidery.....	3 00 2 00	10	Best Patch Work Quilt....	4 00 2 00

### Class 24. — Natural History.

Section.		1st	2nd
1	Collection of Stuffed Birds, &c, of Nova Scotia..	\$10 00	\$8 00
2	Collection of Insects of Nova Scotia, injurious or beneficial to Agriculture .....	5 00	3 00
3	Best Herbarium of Native Plants, all specimens to be Botanically named .....	5 00	3 00

### Class 25. — Indian Work.

Section.		1st	2nd
1	Miniature Indian Canoe.....	\$3 00	\$2 00
2	Nest of Indian Worked Boxes.....	3 00	
3	Pair of Bead Worked Moccasins.....	2 00	
4	Squaw's Head Dress.....	2 00	
5	Pair Home-made Snow Shoes .....	2 00	
6	Market Basket.....	1 00	50
7	Clothes Basket .....	1 00	50
8	Ladies' Work Basket .....	4 00	
9	Miniature Indian Encampment.....	1 00	
10	Cradle.....	1 00	
11	Egg Basket .....	50	
12	Bow and half dozen Arrows.....	1 00	50
13	Half dozen White Ash Shovel Handles, made and exhibited by Indians	1 00	50
14	Half dozen Pickaxe Handles, do do do	1 00	

### Class 26. — Miscellaneous.

Section		1st	2nd
1	Plan of Farm House, with outbuildings.....	Diploma and \$10 00	
2	Plan of City Dwelling.....	Diploma and 10 00	
3	Specimens of Printing .....	Diploma and 10 00	
4	Samples of Bookbinding.....	Diploma and 10 00	
5	Specimens of Business Books, ruled and bound .....	Diploma and 10 00	
6	Extra, at discretion of judges, in sections 3, 4 or 5.....	5 00	

## Section.

	1st	2nd
7 Rustic Summer House, made of native wood .....	\$6 00	\$4 00
8 Rustic Seat, for four persons, do do .....	5 00	
9 Rustic Seat, for two persons, do do .....	4 00	
10 Rustic Seat, for one person, do do .....	3 00	
11 Collection of Native Woods .....	4 00	
12 Extras, at the discretion of the judges, for "Unenumerated" .....		

Whilst the Committee have endeavored to offer prizes for the various important industries of the Province, it is not improbable that some may have been overlooked. In such cases, persons desirous of exhibiting, are invited to communicate with the Exhibition Committee, stating what they propose to exhibit, and the accommodation and other convenience required.

## ERRATUM.

Page 12, strike out of section 18, words "to be tested," and add to section 19, after the word exhibitor.

# BROWN BROTHERS & CO.,

DISPENSING AND FAMILY CHEMISTS,

DEALERS IN

Drugs, Chemicals, Patent Medicines, Perfumes, Soaps,  
Sponges, Brushes, Combs, Toilet Requisites,  
Shoulder Braces, Supporters, Trusses,  
Pure Spices, Seeds, &c., &c.

PROPRIETORS OF

Mayflower Cologne, Mayflower Hair Gloss, Price's Glycerine Cream,  
Abbott's Diarrhœa Cordial, Brown's Essence, Jamaica Ginger,  
Glycerine Lime Cream for the Hair, Wild Rose Den-  
trifrice, Simson's Extract of Coffee, &c.

\*\* Physicians in the Country will find it to their advantage to purchase their stock  
from us, as our goods are all first class and prices low. Our Galenical preparations are all  
manufactured by ourselves, and are warranted.

DISPENSING OF PHYSICIANS PRESCRIPTIONS A SPECIALTY.

BROWN BROTHERS & CO.,  
Ordnance square, Halifax.

---

## ARTHUR FORDHAM,

IMPORTER AND DEALER IN

# LEATHER

—AND—

## SHOE FINDINGS.

No. 132 Upper Water Street,

HALIFAX, N. S.

2nd  
\$4 00

various  
ne may  
ing, are  
ut they  
red.

section

MACDONALD & CO.,  
STEAM AND HOT WATER ENGINEERS  
PLUMBERS AND BRASS FITTERS,  
**Brass Founders & Copper Smiths**  
HALIFAX, N. S.

IMPORTERS OF

Cast and Wrought Iron Pipe with Fittings,  
Engineers' Supplies and Machinery.

MANUFACTURERS OF ALL KINDS

ENGINEERS', PLUMBERS' AND STEAM-FITTERS'

**BRASS GOODS**

AND THE HEAVIER CLASSES OF

**Brass and Copper Work.**

—ALSO—

Vessels' Fastenings and Fittings.

RUBBER, LEATHER AND CANVAS HOSE,

ENGINEERS' RUBBER GOODS, ETC.

STEAM PUMPS,

Steam and Vacuum Gauges, Hydraulic Apparatus, &c.

Public Buildings, Residences, and Factories supplied with

**Warming Apparatus & Plumbing Fixtures,**

With all Modern Improvements, fitted by Engineers thoroughly  
acquainted with our climate.

SOLE AGENTS FOR THE SALE AND APPLICATION OF

**WARREN'S FELT ROOFING**

And Roofing Materials, in and for the Province  
of Nova Scotia.

**162 TO 172, ALSO 306 BARRINGTON STREET, HALIFAX.**

J. R. SAUNDERS,

(Successor to J. H. SYMONS)

IMPORTER OF

**TOBACCO, CIGARS,**

**Pipes, Fishing Tackle.**

**Cricket Goods, Base and Foot Balls, Skates, Snow Shoes,**

**Mocassins, Revolvers, Cartridges, Novelties.**

**142 GRANVILLE STREET,**

**HALIFAX, N. S.**

N. B.—The Subscriber having purchased the entire stock from Mr. Symons at a great reduction on the cost, and having added thereto by recent importation from Europe, America and Cuba, is now prepared to offer the best goods in his line at such prices as will meet the approval of purchasers.

---

**TEA & COFFEE.**

**Halifax Steam Coffee and Spice Mill.**

(ESTABLISHED 1841)

**W. H. SCHWARTZ & SONS,**

**PROPRIETORS.**

**Schwartz's Coffee is the Best in the World.**

**WORKS:**

**52 to 58 Barrington Street.**

**SAMPLE ROOMS:**

**239-Barrington Street-239**

**HALIFAX, N. S.**

# SYLVAN OYSTER SALOON.

DEPOT

## SILVER STREAM OYSTERS.

TRADE MARK.

11 & 15 Granville Street, Halifax, N. S.

**P. J. COLFORD, Proprietor.**

N. B.—Oysters Served Till 12 P. M.

---

## J. CORNELIUS,

MANUFACTURING AND IMPORTING JEWELLER,

99 Granville Street, Halifax, N. S.

---

Fine Jewellery, Watches, Silver and Plated Ware, French Clocks,  
Parian and China Ware, Spectacles, Thermometers, Fine  
Fancy Goods, etc., etc., constantly on hand.

### WALTHAM WATCHES A SPECIALTY.

Agency for the American Pedometer, to measure the distance you walk, an  
invaluable instrument to farmers, or others, (send for Circular.) Also,

Meyer's Watchman Control Clock.

SPECIAL INDUCEMENTS TO CASH BUYERS.

---

## JAMES REARDON,

PAINTER AND DECORATOR,

GLASS GILDER, EMBOSSER, HERALDIC PAINTER,

IMPORTER OF AND DEALER IN

English, French and American Paper Hangings and Decora-  
tions, Varnishes, Japans, Oils, Paints, Brushes, B. Plate,  
Sheet, Embossed and Stained Glasses.

Painters', Glaziers', Gilders' and Artists' Requisites  
always on hand.

**WHOLESALE & RETAIL.**

40 and 42 BARRINGTON STREET, HALIFAX, N. S.

THE CHEAPEST DRY GOODS HOUSE IN THE CITY.

**McMurray & Co.'s**

POPULAR

**DRY GOODS AND MILLINERY STORES.**

SPECIALTIES :

Mantles, Costumes, and Ladies' Outfitting.

273 & 275 BARRINGTON ST., COR. JACOB,

HALIFAX, N. S.

Agency for McColl's New York Celebrated  
Glove-fitting Bazaar Patterns.

**THE ARMY AND NAVY BREWERY,**

**S. OLAND, SONS & CO.,**

PROPRIETORS.

BREWERY :

Turtle Grove

DARTMOUTH.



OFFICE & CITY VAULTS :

36 & 38 Duke Street,

HALIFAX.

CONSTANTLY ON HAND :

AN EXTENSIVE STOCK OF FINE, MILD AND STRONG

**ALES**

**AND EXTRA STOUT PORTER**

IN CASES AND BOTTLES,

REWED FROM THE FAMOUS TURTLE GROVE MINERAL SPRING WATER.



ARMY AND NAVY HAT STORE,

## THOMAS & CO.,

IMPORTERS AND DEALERS IN

ENGLISH AND AMERICAN HATS,

Caps, Furs, Buffalo Robes, &c.

ALWAYS ON HAND:

TRUNKS, VALISES, CARPET BAGS, UMBRELLAS,  
Rubber and Straw Goods and Masonic Aprons.

44 to 48 BARRINGTON STREET, Halifax, N. S.

## HALIFAX BUSINESS COLLEGE

Remains in session all Summer.

STUDENTS JOIN AT ANY TIME.

Superior instruction in Book-keeping, Business Practice, Commercial Law, Commercial Calculations, Business Penmanship, Correspondence.

HESSLEH'S BUILDING, Hollis St.

## ESSON & CO.,

HEAD OF CENTRAL WHARF,

Importers and Wholesale Dealers in

Sugars, Molasses, Teas, Tobacco and General Groceries.

All of which are offered at lowest market prices.

Samples and Quotations sent by Mail when required.

BRITISH WOOLLEN HALL,  
152 AND 154 GRANVILLE STREET.

**Bargains! Bargains! Bargains!**

**GREAT CLEARANCE SALE!**

The proprietor of the above establishment is now offering one of the largest and best assorted stock of Staple and Fancy Dry Goods at **FAR BELOW COST** in order to close out the entire stock.

As all must be sold customers can rely on getting EXTRA good value. Parties visiting the Exhibition are especially requested to call and examine.

Remember the place—

BRITISH WOOLLEN HALL,  
152 and 154 GRANVILLE STREET.

# ENGLISH AND AMERICAN BOOK STORE,

124 Granville Street, Halifax, N. S.

Books in every department of Literature,  
Fashionable and Commercial Stationery,  
Bibles, Church Services,  
Prayer and Hymn Books,  
Photograph, Autograph and Scrap Albums,

Deaks, Gold Pens and Pencils,  
Purses, Pocket Books, Card Cases,  
Opera Glasses,  
Playing Cards, Chess,  
Games of all kinds.

ALL THE AUTHORIZED SCHOOL BOOKS SUPPLIED WHOLESALE AND RETAIL AT LOWEST PRICES.

**BUCKLEY & ALLEN,**

---

## HALIFAX HOTEL,

Hollis Street, Halifax, N. S.,

H. HESSLEIN & SONS, PROPRIETORS.

This Hotel has accomodation for over 150 Guests. Within a short distance of the Exhibition Grounds. Omnibuses passing the door every ten minutes.  
During the Exhibition Week parties not stopping at the Hotel can be provided with meals at low rates.

---

**Established 1854.**

## JOHN WOODILL,

178 Barrington Street, Halifax, N. S.,

—DEALER IN—

**WOOL AND WOOL SKINS,  
OX AND COW HIDES, CALF SKINS, &c.**

The Highest Market Prices paid in Cash.

---

## CHIPMAN BROS.,

IMPORTERS AND DEALERS IN

## BRITISH AND AMERICAN HARDWARE,

CARRIAGE STOCK, &c.,

14, 16 & 18 SACKVILLE STREET, HALIFAX, N. S.

AGENTS for the Halifax Bone Mill and Steel  
Barbed Wire Fencing.

**GREAT CLEARANCE SALE!**

**\$50,000**

WORTH OF

**DRY GOODS!**

TO BE SOLD AT THE  
LONDON HOUSE, GRANVILLE ST.

The Administrators of the Estate of the late William McAllister have decided to sell off the

ENTIRE STOCK OF THE ABOVE ESTABLISHMENT AT

**GREATLY REDUCED PRICES**

TO CLOSE THE BUSINESS.

This is without doubt one of the Largest and Best Assorted Stocks of Dry Goods ever offered in this Market.

The many friends and patrons of the firm of THOMSON & CO., as well as the Public generally, may now expect **BARGAINS!** as the whole stock is to be sold as above.

---

**G. & T. PHILLIPS,**

**BOOK-BINDERS,**

**STEAM MACHINE PAPER BAG MANUFACTURERS,**

**CORNER GRANVILLE & SACKVILLE STREETS.**

---

**BOOK-BINDING,**

**PAPER-RULING,**

**PERFORATING.**

**Blank Books made to order.**

**BILL HEADS FOR SALE.**

# HALIFAX NURSERY,

—AND—

Establishment for New and Rare Plants.

## H. HARRIS, NURSERYMAN.

GREEN HOUSE AND NURSERY — CORNER ROBIE  
AND NORTH STREETS.

HALIFAX, N. S.

## GREEN MARKET



AND EASTERN COUNTIES AGENCY,

Opposite Custom House, Halifax.

Families and Shipping supplied with



**Beef, Mutton, Pork, Lamb, Etc.,**

OF THE BEST QUALITY.

CHEAP FOR CASH ONLY.      WHOLESALE and RETAIL.

Delivered free of charge.

G. P. & J. C. HENRY.

## LIGHT BRAHMA FOWLS!

The advertiser has for sale some handsome CHICKS of the celebrated "TEES" strain, raised by him this Spring.

Price of Chicks, per trio, . . . . . \$6.

Some two year old HENS to be sold low, to make room for new importations. ADDRESS

**JAS. PENNINGTON**

32 Bishop St., Halifax, N. S.

# "STAFFORDSHIRE HOUSE,

223, 225 and 227 Barrington Street,

HALIFAX N. S.

---

## BALDWIN & CO

WHOLESALE AND RETAIL IMPORTERS AND DEALERS IN

### CHINA, GLASS AND EARTHENWARE

AMERICAN CHANDELIERS,

Lamps and Fixtures, Kerosene Oil  
Table Cutlery, &c.,

---

### SCOTCH DYE WORKS

Corner of Barrington & Jacob Sts.

HALIFAX, N. S.



---

### L. FORRESTER

DYER AND CLEANSER.

OSTRICH FEATHERS, KID GLOVES, LADIES' and GENTS' WEARING APPAR  
DYED WITHOUT BEING RIPPED AND WITHOUT SHRINKAGE.

All kinds of Fancy and Plain Goods carefully dyed. Satisfaction guaranteed. Orders promptly attended to. Prices reasonable.

---

### PALACE OF MUSIC.

IF YOU WANT A

## PIANO OR ORGAN

THAT CAN BE RELIED ON,

GO TO THE PALACE OF MUSIC

143 BARRINGTON STREET, HALIFAX,

Where superior instruments can be had at the lowest possible prices, as we import DIRECT FROM THE MANUFACTURERS and buy for cash. The latest Music always on hand.

Pianos and Organs Tuned and Repaired.

J. & F. W. HARRIS,

143 Barrington Street, Halifax, N. S.

---

PRINTED BY THE MORNING HERALD PRINTING AND PUBLISHING COMPANY.



