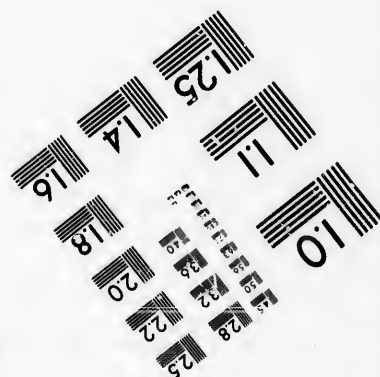
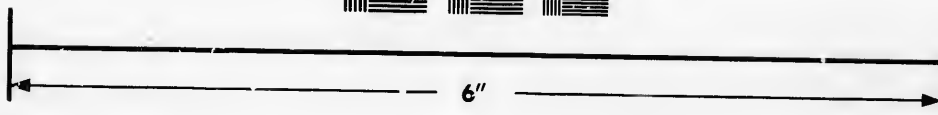
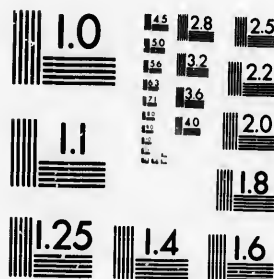


**IMAGE EVALUATION
TEST TARGET (MT-3)**



**Photographic
Sciences
Corporation**

23 WEST MAIN STREET
WEBSTER, N.Y. 14580
(714) 872-4503

**CIHM/ICMH
Microfiche
Series.**

**CIHM/ICMH
Collection de
microfiches.**



Canadian Institute for Historical Microreproductions / Institut canadien de microreproductions historiques

© 1986

Technical and Bibliographic Notes/Notes techniques et bibliographiques

The Institute has attempted to obtain the best original copy available for filming. Features of this copy which may be bibliographically unique, which may alter any of the images in the reproduction, or which may significantly change the usual method of filming, are checked below.

L'Institut a microfilmé le meilleur exemplaire qu'il lui a été possible de se procurer. Les détails de cet exemplaire qui sont peut-être uniques du point de vue bibliographique, qui peuvent modifier une image reproduite, ou qui peuvent exiger une modification dans la méthode normale de filmage sont indiqués ci-dessous.

- | | |
|--|--|
| <input checked="" type="checkbox"/> Coloured covers/
Couverture de couleur | <input type="checkbox"/> Coloured pages/
Pages de couleur |
| <input type="checkbox"/> Covers damaged/
Couverture endommagée | <input type="checkbox"/> Pages damaged/
Pages endommagées |
| <input type="checkbox"/> Covers restored and/or laminated/
Couverture restaurée et/ou pelliculée | <input type="checkbox"/> Pages restored and/or laminated/
Pages restaurées et/ou pelliculées |
| <input type="checkbox"/> Cover title missing/
Le titre de couverture manque | <input checked="" type="checkbox"/> Pages discoloured, stained or foxed/
Pages décolorées, tachetées ou piquées |
| <input type="checkbox"/> Coloured maps/
Cartes géographiques en couleur | <input type="checkbox"/> Pages detached/
Pages détachées |
| <input type="checkbox"/> Coloured ink (i.e. other than blue or black)/
Encre de couleur (i.e. autre que bleue ou noire) | <input checked="" type="checkbox"/> Showthrough/
Transparence |
| <input checked="" type="checkbox"/> Coloured plates and/or illustrations/
Planches et/ou illustrations en couleur | <input type="checkbox"/> Quality of print varies/
Qualité inégale de l'impression |
| <input checked="" type="checkbox"/> Bound with other material/
Relié avec d'autres documents | <input type="checkbox"/> Includes supplementary material/
Comprend du matériel supplémentaire |
| <input type="checkbox"/> Tight binding may cause shadows or distortion
along interior margin.
La reliure serrée peut causer de l'ombre ou de la
distorsion le long de la marge intérieure | <input type="checkbox"/> Only edition available/
Seule édition disponible |
| <input type="checkbox"/> Blank leaves added during restoration may
appear within the text. Whenever possible, these
have been omitted from filming.
Il se peut que certaines pages blanches ajoutées
lors d'une restauration apparaissent dans le texte,
mais, lorsque cela était possible, ces pages n'ont
pas été filmées. | <input type="checkbox"/> Pages wholly or partially obscured by errata
slips, tissues, etc., have been refilmed to
ensure the best possible image/
Les pages totalement ou partiellement
obscurcies par un feuillet d'errata, une pelure,
etc., ont été filmées à nouveau de façon à
obtenir la meilleure image possible. |
| <input type="checkbox"/> Additional comments:
Commentaires supplémentaires: | |

This item is filmed at the reduction ratio checked below/
Ce document est filmé au taux de réduction indiqué ci-dessous.

10X	12X	14X	16X	18X	20X	22X	24X	26X	28X	30X	32X
					✓						

The copy filmed here has been reproduced thanks to the generosity of:

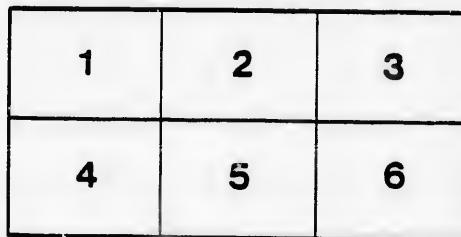
Library
Agriculture Canada

The images appearing here are the best quality possible considering the condition and legibility of the original copy and in keeping with the filming contract specifications.

Original copies in printed paper covers are filmed beginning with the front cover and ending on the last page with a printed or illustrated impression, or the back cover when appropriate. All other original copies are filmed beginning on the first page with a printed or illustrated impression, and ending on the last page with a printed or illustrated impression.

The last recorded frame on each microfiche shall contain the symbol \rightarrow (meaning "CONTINUED"), or the symbol ∇ (meaning "END"), whichever applies.

Maps, plates, charts, etc., may be filmed at different reduction ratios. Those too large to be entirely included in one exposure are filmed beginning in the upper left hand corner, left to right and top to bottom, as many frames as required. The following diagram illustrates the method:



L'exemplaire filmé fut reproduit grâce à la générosité de:

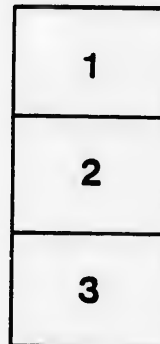
Bibliothèque
Agriculture Canada

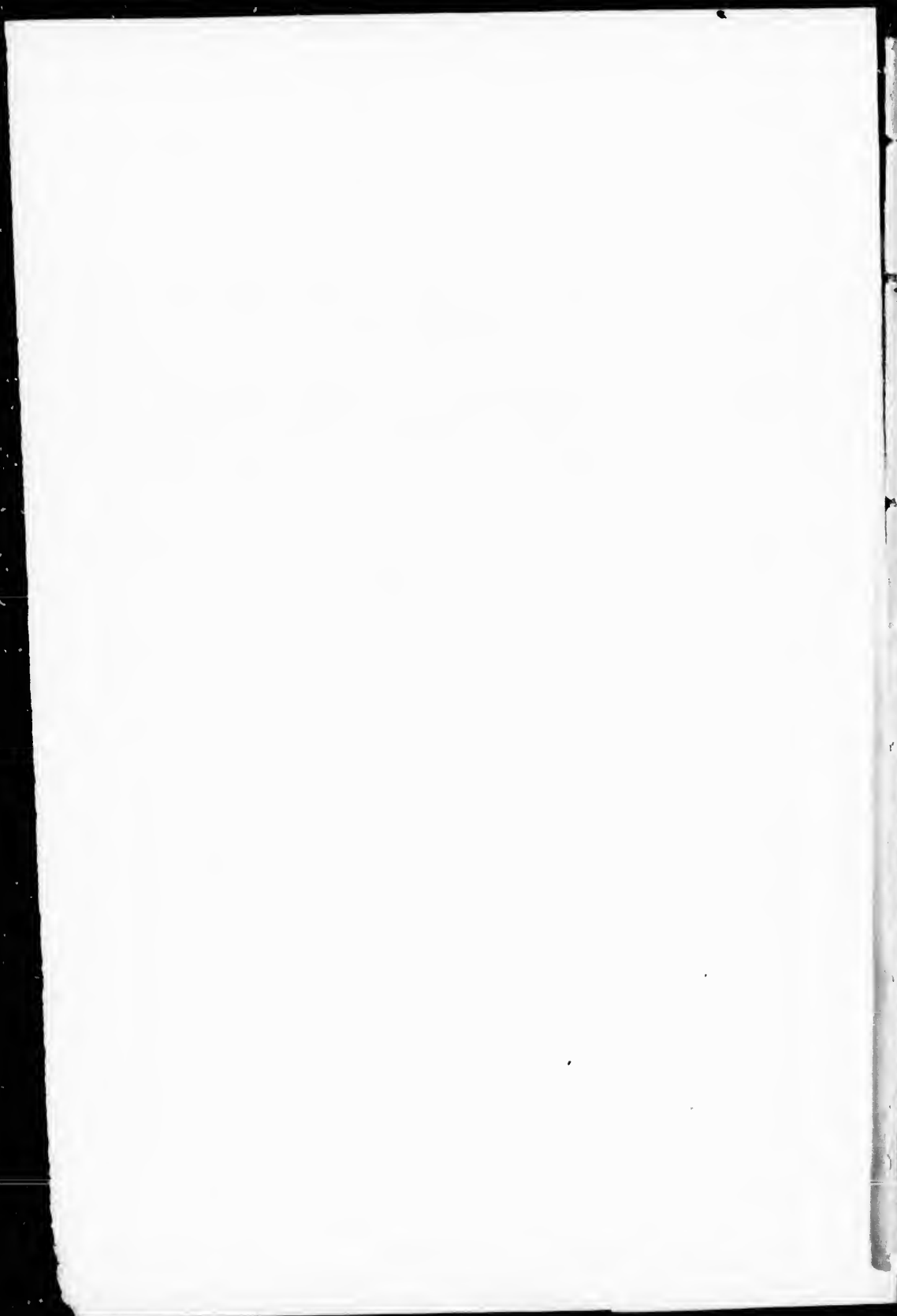
Les images suivantes ont été reproduites avec le plus grand soin, compte tenu de la condition et de la netteté de l'exemplaire filmé, et en conformité avec les conditions du contrat de filmage.

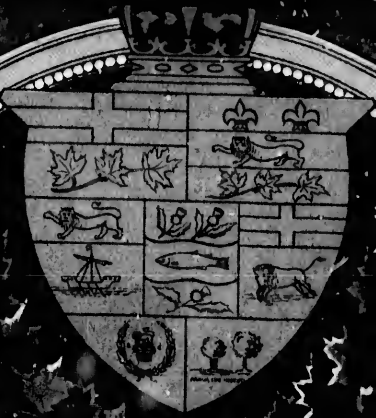
Les exemplaires originaux dont la couverture en papier est imprimée sont filmés en commençant par le premier plat et en terminent soit par la dernière page qui comporte une empreinte d'impression ou d'illustration, soit par le second plat, selon le cas. Tous les autres exemplaires originaux sont filmés en commençant par la première page qui comporte une empreinte d'impression ou d'illustration et en terminent par la dernière page qui comporte une telle empreinte.

Un des symboles suivants apparaîtra sur la dernière image de chaque microfiche, selon le cas: le symbole \rightarrow signifie "A SUIVRE", le symbole ∇ signifie "FIN".

Les cartes, planches, tableaux, etc., peuvent être filmés à des taux de réduction différents. Lorsque le document est trop grand pour être reproduit en un seul cliché, il est filmé à partir de l'angle supérieur gauche, de gauche à droite, et de haut en bas, en prenant le nombre d'images nécessaire. Les diagrammes suivants illustrent la méthode.







THE
DOMINION
OF
CANADA



1 .

2 .

I

3 A

4 T

5 R

T

6 H

Tw

7 Fu

Tw

8 Atl

A sp

9 Two

This

10 Thre

This

FOREST, SPORT AND FISHING.

911 Dominion of Canada, Department of Marine and Fisheries, Ottawa. Sir Louis H. Davies, K.O.M.G., Minister. Lt.-Col. Gourdeau, Deputy Minister. Professor Andrew Halkett, Naturalist.

COLLECTION OF MAMMALS, BIRDS, AND EGGS OF WATER BIRDS.

Harbour Seal. Le Callocephale veau Marin.
Phoca vitulina, L.

1 A specimen from Gulf of St. Lawrence.

2 A specimen from British Columbia.

Harp Seal. Le Phoque Groenland.
Phoca groenlandica, Fabricius.

3 A specimen from Godbout, Province of Quebec.

4 Two young (or baby) specimens from Gulf of St. Lawrence.

5 Ringed Seal. Le Phoque à Collier.
Phoca foetida, Fabricius.

Two Specimens from Gulf of St. Lawrence.

6 Hooded Seal. Le Stemmatope à Casque.
Cystophora cristata, Erxleben.

Two large and one small specimens from Gulf of St. Lawrence.

7 Fur Seal. L'Otarie.

Callorhinus ursinus.

Two young specimens from Pacific Ocean.

8 Atlantic Walrus. Le Morse Cheval Marin.
Odobaeus rosmarus, Linnæus.

A specimen of head and a few tusks from Hudson Bay.

9 Two specimens of American Otter. La Loutre d'Amérique.
Lutra canadensis, Turton.

This species is cosmopolitan in Canada.

10 Three specimens of Mink. Le Vison d'Amérique.
Putorius vison, Schreber.

This species is cosmopolitan in Canada.

- 11 Fisher. Le Pêcheur.
Mustela pennanti, Erxleben.
One specimen from Ontario.
- 12 Musk Rat. L'Ondatra Musqué.
Fiber zibethicus, Linnæus.
Three specimens from Ontario.
- 13 Beaver. Le Castor Fiber.
Castor canadensis, Kuhl.
This species is cosmopolitan in Canada.
- 14 Tusk of Narwhal. Le Narval Monoceros.
Monodon monoceros.
From Hudson Bay.
- 15 Moose Head. L'Elan d'Amerique.
Alces alces americanus, Jardine.

COLLECTION OF BIRDS AND SMALL MAMMALS
FROM PRINCE EDWARD ISLAND.

- 16 Mink. Le Vison d'Amerique.
Putorius vison, Schreber.
- 17 Red-fox. Le Renard Rouge.
Vulpes vulpes, Linnæus.
- 18 Northern Hare. Le Lièvre du Nord.
Lepus americanus virginianus, Harlan.
- 19 Common Loon. Le Plongeon à Collier.
Urinator imber, Gunner.
- 20 Great black backed Gull. Le Goeland à Manteau Noir.
Larus marinus, Linnæus.
- 21 American Herring Gull. Le Goeland Argenté.
Larus argentatus smithsonianus, Coues.
- 22 Common Tern. La Sterne de Wilson.
Sterna hirundo, Linnæus.
- 23 American Merganser. Le Harle d'Amerique.
Merganser americanus, Cass.

- 24 Gadwall. Le Canard Chipeau.
Anas strepera, Linnæus.
- 25 American Golden-eye. Le Bucéphale d'Amérique.
Glaucionetta clangula americana, Bonaparte.
- 26 Surf Duck. Le Canard Macreuse à large Bec.
Oidemia perspicillata, Linnæus.
- 27 Brant. La Bernache Commune.
Branta bernicla, Linnæus.
- 28 American Bittern. Le Butor.
Botaurus lentiginosus, Montagu.
- 29 American Woodcock. La Bécasse d'Amérique.
Philohela minor, Gmelin.
- 30 American Golden Plover. Le Pluvier Doré.
Charadrius dominicus, Müller.
- 31 Canada Ruffed Grouse. La Gélinoite à Fraise.
Bonasa umbellus togata, Linnæus.
- 32 American Goshawk. L'Autour à tête Noire.
Accipiter atricapillus, Wilson.
- 33 Red-shouldered Hawk. La Buse à Manteau Roux.
Buteo lineatus, Gmelin.
- 34 American Sparrow Hawk. Le Faucon Epervier.
Falco sparverius, Linnæus.
- 35 American Long-eared Owl. Le Hibou à Aigrettes Longues.
Asio wilsonianus, Lesson.
- 36 Barred Owl. La Chouette du Canada.
Syrnium nebulosum, Forster.
- 37 Great Horned Owl. Le Duc de Virginie.
Bubo virginianus, Gmelin.
- 38 American Hawk Owl. La Chouette Eperviere.
Surnia ulula caparoch, Muller.
- 39 Blue Jay. Le Geai Huppé.
Cyanocitta cristata, Linnæus.
- 40 Cedar Bird. Le Jaseur du Cèdre.
Ampelis cedrorum, Vieillot.

- 41 Three specimens of young Ostriches and two eggs. L'Autruche
Chameau.

Struthio camelus.

From Ostrich-farm near Toronto, Ontario. Loaned by Mr. Lundy
through "R. Parker & Co., Ostrich Feather Dyers, To-
ronto."

- 42 Down of American Eider Duck. L'Eider d'Amérique.

Somateria dresseri, Sharpe.

From one of the outer islands near Ste. Augustine River, Gulf of
St. Lawrence.

BIRDS' EGGS. ŒUFS D'OISEAUX.

CASE I.

Tray 123.

- 43 Canada Goose. La Bernache du Canada.

Branta Canadensis, Linnaeus.

A specimen from Morell, Prince Edward Island. Collected by
Mr. Ernest Kemp.

Razor-billed Auk. Le Pingouin Commun.

Alca torda, Linnaeus.

- 44 A specimen from Bird Rocks, Magdalen Islands. Collection of
Mr. Rodolphe Lemieux, M.P.

Tray 124.

- 45 A specimen from Magdalen Islands. Collected by Mr. Camille
Delaney.

Kittiwake Gull. La Mouette à trois doigts.

Rissa Tridactyla, Linnaeus.

- 46 Two specimens from Magdalen Islands. Collected by Mr. Camille
Delaney.

Tray 132.

- 47 Two specimens from Bird Rocks, Magdalen Islands. Collection
of Mr. Rodolphe Lemieux, M.P.

Murre. Le Guillemot à ventre blanc.

Uria troile, Linnaeus.

Tray 125. Tray 126.

- 48 Four specimens from Magdalen Islands. Collected by Mr. Camille
Delaney.

Tray 127. Tray 128.

- 49 Three specimens from Bird Rocks, Magdalen Islands. Collection
of Mr. Rodolphe Lemieux, M.P.

White Gannet. Le Fou de Bassan.

Sula bassana, Linnaeus.

- Tray 128.
 50 One specimen from Bird Rocks, Magdalen Islands. Collected by
 Commander William Wakeham "La Canadienne."
- Tray 129.
 51 Two specimens from Bird Rocks, Magdalen Islands. Collection
 of Mr. Rodolphe Lemieux, M.P.
- Trays 130-131.
 Great Northern Diver. Le Plongeon à Collier.
Urinator imber, Gunner.
- 52 Four specimens from Canadian Fishery Museum. This species
 of bird is cosmopolitan in Canada.
- Tray 132.
 53 Puffin. Le Macareux Arctique.
Fratercula arctica, Linnæus.
 A specimen from Bird Rocks, Magdalen Islands. Collection of
 Mr. Rodolphe Lemieux, M.P.
- Tray 133.
 54 American Bittern. Le Butor.
Botaurus lentiginosus, Montague.
 Three specimens from Long Point, Lake Erie.
- 55 Least Bittern. Le Petit Butor.
Botaurus exilis, Gmelin.
 Three specimens from Long Point, Lake Erie.
- Tray 134.
 Common Tern. La Sterne de Wilson.
Sterna hirundo, Linnæus.
- 56 Six specimens from Morell, Prince Edward Island.
- Tray 135.
 57 Three specimens from Tracadie, Nova Scotia. Collected by Mr.
 Ernest Kemp.
- Tray 135.
 58 Black Tern. La Sterne Noire.
Hydrochelidon nigra surinamensis, Gmelin.
 Four specimens from Long Point, Lake Erie.
- Tray 136.
 59 Common Gallinule. La Gallinule de la Floride.
Gallinula galeata, Light.
 Five specimens from Long Point, Lake Erie.
- Piping Plover. Le Pluvier Criard.
Aegialitis meloda, Ord.
- 60 One specimen from Morell, Prince Edward Island. Collected by
 Mr. Ernest Kemp.

Tray 137.

- 61 Four specimens from Long Point, Lake Erie.

Tray 138.

- 62 Four specimens from Sable Island, Nova Scotia.

Tray 137.

- 63 Kill-Deer Plover. Le Pluvier Kildir.
Aegialitis vocifera, Linnæus.
Four specimens from Long Point, Lake Erie.

Tray 138.

- 64 Least Sand-piper. La Maubèche de Wilson.
Tringa minutilla, Vieillot.
Four specimens from Sable Island, Nova Scotia.

CASE J.

Trays 139-154.

- 65 Murres' Eggs.
Uria troile, Linnæus.
Sixteen specimens from Bird Rocks, Magdalen Islands. Collected
by Commander William Wakeham "La Canadienne."

912 Province of Quebec, Department of Agriculture. Hon. F. G. M. Dechene, Minister, Quebec.

- 66 Moose. L'Elan d'Amérique.
Alce alces americanus, Jardine.
Specimens of male, female and calf.
- 67 Two specimens of Woodland Caribou or Reindeer. Le Renne
Caribou.
Rangifer tarandus caribu, Kerr.
- 68 Red Deer. Le Cerf de Virginie.
Cariacus virginianus, Boddaert.
Two specimens of adults and a fawn.
- 69 Two specimens of Beaver. Le Castor Fiber.
Castor canadensis, Kuhl.
- 70 Black Squirrel. L'Ecureuil Noir
Sciurus carolinensis, Gmelin.

- 71 Two specimens of Black Bear. L'Ours Noir d'Amerique.
Ursus americanus, Pallas.
- 72 Specimen of Brown Bear. L'Ours Brun d'Amerique.
Ursus americanus, Pallas.
Authorities differ as to this being a distinct species from the above.
- 73 Two specimens of Wolf. Le Loup Vulgaire.
Canis Lupus, Linnæus.
- 74 Two specimens of Esquimaux Dog. Le Chien des Esquimaux.
Canis borealis.
- 75 Three specimens of Marten. La Marte Commune.
Mustela americana, Turton.
- 76 Two specimens of Skunk. Le Zorille Varié.
Mephistis mephistica, Shaw.
- 77 Specimen of Fisher. Le Fêcheur.
Mustela pennanti, Erxleben.
- 78 Specimen of Mink. Le Vison d'Amerique.
Putorius vison, Schreber.
- 79 Two specimens of Wolverine. Le Glouton Artique ou Boréal.
Gulo gulo, L.
- 80 Two specimens of Otter. La Loutre d'Amerique.
Lutra canadensis, Turton.
- 81 Red Fox. Le Renard Rouge.
Vulpes vulpes, L.
- 82 Cross Fox. Le Renard Croisé.
Vulpes decussatus.
- 83 Silver Fox. Le Renard Argenté.
Vulpes, sp.
- 84 Two specimens Canada Lynx.
Lynx canadensis, Desmarest.
- 913 Hon. F. G. M. Dechene, Quebec, Que.
- 85 Moose. L'Elan d'Amerique.
Alce alces americanus, Jardine.
- 86 One specimen Moose Head. L'Elan d'Amerique.
Alce alces americanus, Jardine.

- 87 Two specimens Red Deer Heads. Le Cerf de Virginie.
Cariacus virginianus, Boddaert.
- 88 Two specimens Wapiti Heads. Le Cerf Wapiti.
Cervus canadensis, Erxleben.
- 89 Four specimens Moose Heads. L'Elan d'Amerique.
Alce alces americanus, Jardine.
- 90 Five specimens Woodland Caribou or Reindeer Heads. Le Renne Caribou
Rangifer tarandus caribu, Kerr.
- 91 One specimen Buffalo Head. Le Bison d'Amerique.
Bison americanus.
- 92 Two specimens Musk Ox Heads. L'Ovibos Musqué.
Ovibos moschatus.

914 Sir Adolph Caron, Ottawa, Ont.

- 93 One specimen Buffalo Head. Le Bison d'Amerique.
Bison americanus.

915 D. R. Wilkie, Esq., Toronto, Ont.

- 94 One specimen Buffalo Head. Le Bison d'Amerique.
Bison americanus.

916 J. R. Gill, Esq., Ottawa, Ont.

- 95 One specimen Moose Head. L'Elan d'Amerique
Alce alces americanus, Jardine.
- 96 One specimen Wapiti Head. Le Cerf Wapiti.
Cervus canadensis, Erxleben.

FURS OF MAMMALS

Inhabiting Anticosti Island, Province of Quebec.

917 Henry Menier. Through Dr. Schmitt.

- 97 Black Bear. L'Ours Noir d'Amerique.
Ursus americanus, Pallas.
- 98 Red Fox. Le Renard Rouge.
Vulpes vulpes, Linnæus.
- 99 Silver Fox. Le Rénard Argenté.
Vulpes, sp.

- 100 Cross Fox. Le Rénard Croisé.
Vulpes decussatus.
- 101 Marten. La Marte Commune.
Mustela americana, Turton.
- 102 American Otter. La Loutre d'Amérique.
Lutra canadensis, Turton.

FURS

- 918 The Hudson Bay Company, London, England.
- 103 Common Raccoon. Le Raton Laveur.
Procyon lotor, Linnæus.
- 104 Different varieties of the Black, } L'Ours Noir d'Amérique.
Brown, or Cinnamon Bear. }
Ursus americanus, Pallas.
- 105 Polar Bear. L'Ours Blanc ou Polaire.
Thalarctos maritimus.
- 106 American Otter. La Loutre d'Amérique.
Lutra hudsonica, Lacépède.
- 107 Skunk. Le Zorille Varié.
Mephitis mephitis, Shaw.
- 108 American Badger. Le Blaireau d'Amérique.
Taxidea americana, Boddaert.
- 109 Wolverine. Le Glouton Artique ou Boréal.
Gulo gulo, Linnæus.
- 110 Sable or Marten. La Marte Commune.
Mustela americana, Turton.
- 111 Mink. Le Vison d'Amérique.
Putorius vison, Schreber.
- 112 Ermine or Weasel. La Belette-Hermine.
Putorius erminea, Linnæus.
- 113 Red Fox (different varieties). Le Rénard Rouge.
Vulpes vulpes, Linnæus.
- 114 Silver Fox. Le Rénard Argenté.
Vulpes, sp.
- 115 Cross Fox. Le Rénard Croisé.
Vulpes decussatus.

- 116 Wolf. Le Loup Vulgaire.
Canis lupus, Linnæus.
- 117 Canada Lynx. Le Lynx du Canada.
Lynx canadensis, Desmarest.
- 118 Fisher. Le Pêcheur.
Mustela pennanti, Erxleben.
- 119 Beaver. Le Castor Fiber.
Castor canadensis, Kuhl.
- 120 Northern Hare. Le Lièvre du Nord.
Lepus americanus virginianus, Harlan.
- 121 Musquash or Musk-rat. L'Ondatra Musqué.
Fiber zibethicus, Linnæus.
- 122 Musk Ox. L'Ovibos Musqué.
Ovibos moschatus.
- 919 G. E. Atkinson, *Portage la Prairie, Manitoba.*
- 123 Holboell's Grebe. Le Grébe à cou Rouge.
Colymbus holboellii, Reinhardt.
- 124 Horned Grebe. Le Grébe Cornu.
Colymbus auritus, Linnæus.
- 125 Pied-billed Grebe. Le Grébe à Bec Bigarré.
Podilymbus podiceps, Linnæus.
- 126 Common Loon or Great Northern Diver. Le Plongeon à Collier.
Urinator imber, Gunner.
- 127 Franklin's Rosy Gull. La Mouette Rose de Franklin.
Larus franklinii, Swainson and Richardson.
- 128 Forster's Tern. La Sterne de Forster.
Sterna forsteri, Nuttall.
- 129 Common Tern or Wilson's Tern. La Sterne de Wilson.
Sterna hirundo, Linnæus.
- 130 Black Tern. La Sterne Noire.
Hydrochelidon nigra surinamensis, Gmelin.
- 131 Double-crested Cormorant. Le Cormoran à Aigrettes.
Phalacrocorax dilophus, Swainson and Richardson.
- 132 Hooded Merganser. Le Petit Harle.
Lophodytes cucullatus, Linnæus.

- 133 Mallard or Green Head. Le Canard Ordinaire.
Anas boschas, Linnæus.
- 134 Gadwall or Gray Duck. Le Canard Chipecau.
Anas strepera, Linnæus.
- 135 Baldpate or American Widgeon. Le Canard Siffleur d'Amerique.
Anas americana, Gmelin.
- 136 Pin-tail Duck. Le Canard Pilet.
Dasila acuta, Linnæus.
- 137 Wood Duck. Le Canard Huppé.
Aix sponsa, Linnæus.
- 138 Redhead. Le Canard Milouin à tête rousse.
Aythya americana, Eyton.
- 139 Canvas-back. Le Canard Milouin aux yeux rouges.
Aythya vallisneria, Wilson.
- 140 Lesser Scaup Duck. Le Petit Morillon.
Aythya affinis, Eyton.
- 141 American Golden-eye or Whistler. Le Bucéphale d'Amerique.
Glauconetta clangula americana, Bonaparte.
- 142 Buffle-head. Le Petit Bucéphale.
Charitonetta albeola, Linnæus.
- 143 Coween, Long-tailed Duck, or Old Squaw. Le Canard à Longue
Queue.
Clangula hyemalis, Linnæus.
- 144 Ruddy Duck. Le Canard Roux.
Erismatura rubida, Wilson.
- 145 Blue Snow Goose. L'Oie du Nord.
Chen caerulescens, Linnæus.
Considered by some ornithologists to be a variety of the next
mentioned. The French names L'Oie du Nord and L'Oie
Blanche are applicable to both varieties.
- 146 Snow Goose. L'Oie Blanche.
Chen hyperborea, Pallas.
- 147 Blue-winged Teal. La Sarcelle à Ailes Bleues.
Anas discors, Linnæus.
- 148 Shoveller. Le Canard Souchet.
Spatula clypeata, Linnæus.
Specimen of male.

- 149 Canada Goose. La Bernache du Canada.
Branta canadensis, Linnæus.
- 150 American White-fronted Goose. L'Oie d'Amérique à Front Blanc.
Anser albifrons gambeli, Hartlaub.
- 151 American Bittern. Le Butor.
Botaurus lentiginosus, Montagu.
- 152 Great Blue Heron. Le Grand Héron Blue.
Ardea herodias, Linnæus.
- 153 Sandhill Crane. La Grue du Canada.
Grus mexicana, Muller.
Some ornithologists consider this and the next to be the same species. Hence the name "La Grue du Canada" as applied to both.
- 154 Little Brown Crane. La Grue du Canada.
Grus canadensis, Linnæus.
- 155 Virginia Rail. Le Rale de Virginie.
Rallus virginianus, Linnæus.
- 156 Sora Rail or Ortolan. Le Rale de la Caroline.
Porzana carolina, Linnæus.
- 157 American Coot. La Foulque d'Amérique.
Fulica americana, Gmelin.
- 158 Wilson's Phalarope. Le Phalarope de Wilson.
Phalaropus tricolor, Vieillot.
- 159 Pectoral Sandpiper. La Maubèche Tachetée.
Tringa maculata, Vieillot.
- 160 Least Sand-piper. La Maubèche de Wilson.
Tringa minutilla, Vieillot.
- 161 Sanderling. Le Sanderling.
Calidris arenaria, Linnæus.
- 162 Marbled Godwit. La Barge Marbrée.
Limosa fedoa, Linnæus.
- 163 Greater Yellow-legs. Le Chevalier Aboyeur.
Totanus melanoleucus, Gmelin.
- 164 Lesser Yellow-legs. Le Petit Chevalier à Pieds Jaunes
Totanus flavipes, Gmelin.
- 165 Spotted Sand-piper. La Maubèche Tachetée.
Actitis macularia, Linnæus.

- 166 Willet. Le Chevalier Semipalmé.
Symphemia semipalmata, Gmelin.
- 167 Bartramian Sand-piper. La Maubèche à Longue Queue.
Bartramia longicauda, Bechstein.
- 168 American Golden Plover. Le Pluvier Doré.
Charadrius dominicus, Muller.
- 169 Killdeer Plover. Le Pluvier Kildir.
Ægialitis vocifera, Linnæus.
- 170 Spruce Partridge or Canada Grouse. Le Tetras du Canada.
Dendragapus canadensis, Linnæus.
- 171 Willow Ptarmigan. Le Lagopède des Saules.
Lagopus lagopus, Linnæus.
- 172 Ruffed Grouse. La Gélinothe à Fraîse.
Bonasa umbellus Linnæus.
- 173 Pinnated Grouse or Prairie Hen. La Gélinothe des Prairies.
Tympanuchus americanus, Reichenbach.
- 174 Sharp-tailed Grouse. La Gélinothe à Queue Aigue.
Pedioctetus phasianellus, Linnæus.
- 175 Mourning Dove. La Tourterelle de la Caroline.
Zenaidura macroura, Linnæus.
- 176 Turkey Vulture. Le Vautour Aura.
Cathartes aura, Linnæus.
- 177 Marsh Hawk or Harrier. Le Busard des Marais.
Circus hudsonius, Linnæus.
- 178 Sharp-shinned Hawk. L'Épervier Brun.
Accipiter velox, Wilson.
- 179 American Goshawk. L'Autour à Tête Noire.
Accipiter atricapillus, Wilson.
- 180 Red-tailed Hawk. La Buse à Queue Rousse.
Buteo borealis, Gmelin.
- 181 Swainson's Hawk. La Buse de Swainson.
Buteo swainsoni, Bonaparte.
- 182 Broad-winged Hawk. La Buse de Pennsylvanie.
Buteo latissimus, Wilson.
- 183 Rough-legged Hawk. La Buse Pattue d'Amérique.
Archibuteo lagopus, Brunnich.

- 184 Golden Eagle. L'Aigle du Canada.
Aquila chrysaetos, Linnaeus.
- 185 Bald Eagle. L'Aigle à Tête Blanche.
Haliaeetus leucocephalus Linnaeus.
- 186 Peregrine Falcon or Duck Hawk. Le Faucon Pelerin.
Falco peregrinus anatum, Bonaparte.
- 187 American Long-eared Owl. Le Hibou à Aigrettes longues.
Asio wilsonianus, Lesson.
- 188 Short-eared Owl. Le Hibou à Aigrettes Courtes.
Asio accipitrinus, Pallas.
- 189 Barred Owl. La Chouette du Canada.
Syrnium nebulosum, Forster.
- 190 Great Grey Owl. La Chouette Cendrée.
Urochelidon cinerea, Gmelin.
- 191 Richardson's Owl. La Nyctale de Richardson.
Nyctala tengmalmi richardsoni, Bonaparte.
- 192 Saw-whet Owl or Arcadian Owl. La Nyctale d'Arcadie.
Nyctala acadica, Gmelin.
- 193 Burrowing Owl. Le Pheleoptynxdes Hypogées.
Speotyto cunicularia hypogaea, Bonaparte.
- 194 Western Horned Owl. Le Duc de Virginie.
Bubo virginianus subarcticus, Hoy.
- 195 Snowy Owl. Le Harfang.
Nyctea nyctea, Linnaeus.
Two specimens, male and female.
- 196 American Hawk Owl or Day Owl. La Chouette Eperviere.
Surnia ulula caparoch, Muller.
- 197 Black-billed Cuckoo. Le Coucou à Bec Noir.
Coccyzus erythrophthalmus, Wilson.
Two specimens and nest.
- 198 Belted Kingfisher. Le Martin Pêcheur.
Ceryle alcyon, Linnaeus.
- 199 Hairy Woodpecker. Le Pic Chevelu.
Dryobates villosus, Linnaeus.
- 200 Downy Woodpecker. Le Pic Minule.
Dryobates pubescens, Linnaeus.

- 201 Arctic or Black-backed three-toed Woodpecker. Le Pic Arctique.
Picoides arcticus, Swainson.
- 202 Yellow-bellied Woodpecker. Le Pic Maculé.
Sphyrapicus varius, Linnaeus.
- 203 Pileated Woodpecker. La Pic à Huppe écarlate.
Ceophloeus pileatus, Linnaeus.
- 204 Red-headed Woodpecker. Le Pic à tete Rouge.
Melanerpes erythrocephalus, Linnaeus.
- 205 Flicker, Golden-winged Woodpecker or High-holder. Le Pic Doré.
Colaptes auratus, Linnaeus.
Two specimens (One a hybrid).
- 206 Chimney Swift. Le Martinet des Cheminées.
Chætura pelagica, Linnæus.
- 207 Ruby-throated Humming Bird. Le Colibri à gorge rubis.
Trochilus colubris, Linnæus.
- 208 Kingbird or Bee-martin. Le Tyran de la Caroline.
Tyrannus tyrannus, Linnæus.
- 209 Crested Flycatcher. Le Moucherolle à Huppe.
Myiarchus crinitus, Linnæus.
- 210 Phoebe. Le Moucherolle Brun.
Sayornis phoebe, Latham.
- 211 Olive-sided Flycatcher. Le Moucherolle à cotes Olive.
Contopus borealis, Swainson.
- 212 Wood Pewee. Le Moucherolle verdatre.
Contopus virens, Linnæus.
- 213 Yellow-bellied Flycatcher. Le Moucherolle à ventre jaune.
Empidonax flaviventris, Baird.
- 214 Traill's Flycatcher. Le Moucherolle de Trail.
Empidonax pusillus traillii, Audubon.
- 215 Least Flycatcher. Le petit Moucherolle.
Empidonax minimus, Baird.
- 216 Horned Lark. L'Alouette Ordinaire ou de Virginie.
Otocoris alpestris, Linnæus.
- 217 American Magpie. La Pie de la Baie d'Hudson.
Pica pica hudsonica, Sabine.

- 218 Blue Jay. Le Geai Huppé.
Cyanocitta cristata, Linnaeus.
- 219 Canada Jay or Whisky Jack. Le Geai du Canada.
Perisoreus canadensis, Linnaeus.
- 220 Northern Raven. Le Corbeau du Nord.
Corvus corax principalis, Ridgway.
- 221 American Crow. La Corneille d'Amerique.
Corvus americanus, Audubon.
- 222 Bobolink. Le Goglu.
Dolichonyx oryzivorus, Linnaeus.
- 223 Yellow-headed Blackbird. L'Etourneau à tete jaune.
Xanthocephalus xanthocephalus, Bonaparte.
Three specimens and nest.
- 224 Red-and-buff-shouldered Blackbird. L'Etourneau à ailes rouges.
Agelaius phoeniceus, Linnaeus.
- 225 Meadow Lark. L'Etourneau des Prés.
Sturnella magna, Linnaeus.
- 226 Baltimore Oriole. L'Oriole de Baltimore.
Icterus galbula, Linnaeus.
- 227 Rusty blackbird or Grackle. Le Mainate Couleur de rouille.
Scolecophagus carolinus, Muller.
- 228 Brewer's Blackbird. La Mainate de Brewer.
Scolecophagus cyanocephalus, Wagler.
- 229 Evening Grosbeak. Le Gros-Bec à Couronne Noire.
Coccothraustes vespertina, Cooper.
- 230 American Pine Grosbeak. Le Bourreuil du Canada.
Pinicola enucleator canadensis, Cabanis.
- 231 Purple Finch. Le Pinson Pourpre.
Carpodacus purpureus, Gmelin.
- 232 American Red-cross bill. Le Bec-croisé d'Amerique.
Loxia curvirostra minor, Brehm.
- 233 White-winged crossbill. Le Bec-Croisé à ailes Blanches.
Loxia leucoptera, Gmelin.
- 234 Hoary Redpoll. Le Sizerin Blanchatre.
Acanthis hornemannii exilipes, Coues.

- 235 Redpoll. Le Sizerin à tête rouge.
Acanthis linaria, Linnæus.
- 236 American Goldfinch. Le Chardonneret jaune.
Spinus tristis, Linnæus.
- 237 Pine Siskin. Le Chardonneret des Pins.
Spinus pinus, Wilson.
- 238 Snow Bunting. Le Plectropane des Neiges.
Plectrophenax nivalis, Linnæus.
- 239 Lapland Longspur. Le Plectropane de Laponie.
Calcarius lapponicus, Linnæus.
- 240 Chestnut-collared Longspur. Le Plectropane.
Calcarius ornatus, Townsend.
- 241 Vesper Sparrow or Gray-winged Bunting. Le Pinson des
[Guérets].
Pooecetes gramineus, Gmelin.
- 242 Savannah Sparrow. Le Pinson de Savanna.
Ammodramus sandwichensis savanna, Wilson.
- 243 Le Conte's Sparrow. Le Pinson de Le Conte.
Ammodramus leconteii, Audubon.
- 244 Lark Sparrow. Le Pinson à Oreilles Brunes.
Chondestes grammacus, Say.
- 245 Harris's Sparrow. Le Pinson de Harris.
Zonotrichia querula, Nuttall.
- 246 White-crowned Sparrow. Le Pinson à Couronne Blanche.
Zonotrichia leucophrys, Forster.
- 247 White-throated Sparrow. Le Pinson à Gorge Blanche.
Zonotrichia albicollis, Gmelin.
- 248 Intermediate Sparrow. Le Pinson intermédiaire.
Zonotrichia intermedia, Ridgway.
249. Tree Sparrow. Le Pinson de Montagne.
Spizella monticola, Gmelin.
- 250 Chipping Sparrow. Le Petit Pinson à Couronne Rousse.
Spizella socialis, Wilson.
- 251 Clay-coloured Sparrow.
Spizella pallida, Swainson.

- 252 Slate-coloured Junco. Le Pinson Niverolle.
Junco hyemalis, Linnaeus.
- 253 Lincoln's Sparrow. Le Pinson de Lincoln.
Melospiza lincolni, Audubon.
- 254 Swamp Sparrow. Le Pinson des Marais.
Melospiza georgiana, Latham.
- 255 Fox Sparrow. Le Pinson Fauve.
Passerella iliaca, Merrem.
- 256 Towhee. Le Pinson aux Yeux Rouges.
Pipilo erythrophthalmus, Linnaeus.
- 257 Rose-Breasted Grosbeak. Le Gros-Bec à Poitrine Rose.
Habia ludoviciana, Linnaeus.
- 258 Scarlet Tanager. Le Tangara Ecarlate.
Piranga erythromelas, Vieillot.
- 259 Cliff Swallow. L'Hirondelle à Front Blanc.
Petrochelidon lunifrons, Say.
- 260 Barn Swallow. L'Hirondelle des Granges.
Chelidon erythrogaster, Boddaert.
- 261 Bohemian Waxwing. Le Jaseur de Bohême.
Ampelis garrulus, Linnaeus.
- 262 Cedar Waxwing. Le Jaseur du Cèdre.
Ampelis cedrorum, Vieillot.
Three specimens and nest.
- 263 Northern Shrike or Butcher Bird. Le Pie-Grièche Boréale.
Lanius borealis, Vieillot.
- 264 White-rumped Shrike. La Pie-Grièche à Croupion Blanc.
Lanius ludovicianus excubitorides, Swainson.
- 265 Red-eyed Vireo. Le Vireo aux Yeux Rouges.
Vireo olivaceus, Linnaeus.
- 266 Philadelphia Vireo. Le Vireo de Philadelphie.
Vireo philadelphicus, Cassin.
- 267 Warbling Vireo. Le Vireo Gris.
Vireo gilvus, Vieillot.
- 268 Blue-headed Vireo. Le Vireo Solitaire.
Vireo solitarius, Wilson.

- 269 Black and White Warbler. Le Grimpereau Noir et Blanc.
Mniotilta varia, Linnæus.
- 270 Nashville Warbler. La Fauvette de Nashville.
Helminthophila ruficapilla, Wilson.
- 271 Orange-crowned Warbler. La Fauvette à Couronne orange.
Helminthophila celata, Say.
- 272 Tennessee Warbler. La Fauvette du Tennessee.
Helminthophila peregrina, Wilson.
- 273 Yellow Warbler. La Fauvette jaune.
Dendroica aestiva, Gmelin.
Two specimens and nest.
- 274 Myrtle Warbler. La Fauvette à Croupion jaune.
Dendroica coronata, Linnæus.
- 275 Magnolia Warbler. La Fauvette à tête cendrée.
Dendroica maculosa, Gmelin.
- 276 Chestnut-sided warbler. La Fauvette de Pensylvanie.
Dendroica pensylvanica, Linnæus.
- 277 Bay-breasted Warbler. La Fauvette à Poitrine Baie.
Dendroica castanea, Wilson.
- 278 Black-poll Warbler. La Fauvette Rayée.
Dendroica striata, Forster.
- 279 Blackburnian Warbler. La Fauvette de Blackburn.
Dendroica blackburniae, Gmelin.
- 280 Palm Warbler. La Fauvette à tête Rousse.
Dendroica palmarum hypochrysea, Ridgway.
- 281 Oven Bird. La Grive Couronnée.
Seiurus aurocapillus, Linnæus.
- 282 Water Thrush. La Grive Hochequene.
Seiurus noveboracensis, Gmelin.
- 283 Mourning Warbler. La Fauvette de Philadelphie.
Geothlypis philadelphia, Wilson.
- 284 Maryland Yellow-throat. La Fauvette Trichas.
Geothlypis trichas, Linnæus.
- 285 Canadian Warbler. La Fauvette Moucherolle du Canada.
Sylvania canadensis, Linnæus.

- 286 American Redstart. La Fauvette Moucherolle Doré.
Setophaga ruticilla, Linnæus.
- 287 Cat-bird. La Grive de la Caroline.
Galeoscoptes carolinensis, Linnæus.
Two specimens and nest.
- 288 Brown Thrasher. La Grive Rousse.
Harporhynchus rufus, Linnæus,
- 289 House Wren. Le Troglodyte Ædon.
Troglodytes ædon, Vieillot.
- 290 Winter Wren. Le Troglodyte d'Hiver,
Troglodytes hiemalis, Vieillot.
- 291 Short-billed Marsh Wren. Le Troglodyte des Marais.
Cistothorus stellaris, Lichtenstein.
- 292 Brown Creeper. Le Grimpereau d'Amérique.
Certhia familiaris americana, Bonaparte.
- 293 White-Breasted Nuthatch. La Sittelle de la Caroline.
Sitta carolinensis, Latham.
- 294 Red-breasted Nuthatch. La Sittelle du Canada.
Sitta canadensis, Linnæus.
- 295 Chickadee. La Mésange à tête Noire.
Parus atricapillus, Linnæus.
- 296 Golden-crowned Kinglet. Le Roitelet Huppé.
Regulus satrapa, Lichtenstein.
- 297 Ruby-crowned Kinglet. Le Roitelet à Couronne Rubis.
Regulus calendula, Linnæus.
- 298 Wilson's Thrush. La Grive de Wilson.
Turdus fuscescens, Stephens.
- 299 Gray-cheeked Thrush. La Grive aux Côtés de la tête Grisâtres.
Turdus aliciae, Baird.
- 300 Olive backed Thrush. La Grive de Swainson.
Turdus ustulatus swainsonii, Cabanis.
- 301 Hermit Thrush. La Grive Solitaire.
Turdus americanus pallasii, Cabanis.
- 302 Blue Bird. Le Rouge-gorge Bleu.
Sialia sialis, Linnæus.

- 303 Moose Heads. L'Elan d'Amérique.
Alce alces americanus, Jardine.
- 920 Alex. Calder, Winnipeg, Manitoba.
- 304 Western Grebe. Le Grèbe Occidentalis.
Aechmophorus occidentalis, Lawrence.
- 305 American Red-necked Grebe, or Holboell's Grebe. Le Grèbe à
[Cou Rouge].
Colymbus holboellii, Reinhardt.
- 306 Horned Grebe. Le Grèbe Cornu.
Colymbus auritus, Linnæus.
- 307 Crested Grebe. Le Grèbe Huppé.
Podiceps cristatus, Latham.
- 308 Great Northern Diver or Common Loon. Le Plongeon à Collier.
Urinator imber, Gunner.
- 309 Double Crested Cormorant. Le Cormoran d'Aigrettes.
Phalacrocorax dilophus, Swainson and Richardson.
- 310 American White Pelican. Le Pélican Blanc.
Pelecanus erythrorhynchos, Gmelin.
- 311 American Merganser or Sheldrake. Le Harle d'Amérique.
Merganser americanus, Cassin.
- 312 Hooded Merganser. Le Petit Harle.
Lophodytes cucullatus, Linnæus.
- 313 Mallard or Greenhead. Le Canard Ordinaire.
Anas boschas, Linnæus.
- 314 American Widgeon or Baldpate. Le Canard, Siffleur d'Améri-
[que].
Anas americana, Gmelin.
- 315 Green-winged Teal. La Sarcelles à Ailes Vertes.
Anas carolinensis, Gmelin.
- 316 Blue-winged Teal. La Sarcelle à Ailes Bleues.
Anas discors, Linnæus.
- 317 Pin-tail Duck. Le Canard Pilet.
Dasila acuta, Linnæus.
- 318 Wood Duck. Le Canard Huppé.
Aix sponsa, Linnæus.

- 319 American Pochard or Red-head. Le Canard Milouin à tête
[Rousse.
Aythya americana, Eyton.
- 320 Canvas-back Duck. Le Canard Milouin aux Yeux Rouges.
Aythya vallisneria, Wilson.
- 321 American Scaup Duck. Le Morillon à tête Noire.
Aythya marila nearctica, Stejneger.
- 322 Buffle-head. Le Petit Bucephale.
Churitonitta albeola, Linnaeus.
- 323 Laughing Goose. L'Oie d'Amérique à Front Blanc.
Anser albifrons gambeli, Hartl.
- 324 Canada Goose. La Bernache du Canada.
Branta canadensis, Linnaeus.
- 325 Black-crowned Night Heron. Le Héron de Nuit.
Nycticorax nycticorax naevius, Boddaert.
- 326 White or Whooping Crane. La Grue d'Amérique.
Grus americana, Linnæus.
- 327 Wilson's Phalarope. Le Phalarope de Wilson.
Phalaropus tricolor, Vieillot.
- 328 Marlin or Great Marbled Godwit. La Barge Marbrée.
Limosa fedoa, Linnæus.
- 329 Dusky Grouse.
Dendragapus obscurus, Say.
- 330 Ruffed Grouse. La Gélinoite à Fraise.
Bonasa umbellus, Linnæus.
- 331 Rock Ptarmigan. Le Lagopède des Rochers.
Lagopus rupestris, Gmelin.
- 332 Pinnated Grouse or Prairie Hen. La Gélinoite des Prairies.
Tympanuchus americanus, Reichenbach.
- 333 Golden Eagle. L'Aigle du Canada.
Aquila chrysetos, Linnæus.
- 334 Bald Eagle. L'Aigle à Tête Blanche.
Haliaeetus leucocephalus, Linnæus.
- 335 Duck Hawk or Peregrine Falcon. Le Faucon Pèlerin.
Falco peregrinus anatum, Bonaparte.

- 336 Western Barred Owl. La Chonnette Occidentale.
Syrnium occidentale, Xantus.
- 337 Screech or Mottled Owl. Le Scops Maculé.
Megascops asio, Linnæus.
- 338 Great Horned Owl. Le Duc de Virginie.
Bubo virginianus, Gmelin.
- 339 Snowy Owl. Le Harfang.
Nyctea nyctea, Linnæus.
- 340 Burrowing Owl. Le Pheleoptynx des Hypodées.
Speotyto cunicularia hypogææ, Bonaparte.
- 341 Black-tail Deer Head.
Cervus columbianus.
- 342 Wapiti Heads. Le Cerf Wapiti.
Cervus canadensis, Erxleben.
- 343 Moose Heads. L'Elan d'Amérique.
Alces alces americanus, Jardine.
- 344 Woodland Caribou or Reindeer Head. Le Renne Caribou.
Rangifer tarandus caribu, Kerr.
- 345 Rocky Mountain Antelope Head. Le Capricorne d'Amérique.
Antilocapra americana, Ord.
- 346 Buffalo Heads. Le Bison d'Amérique.
Bison americanus.
- 347 Musk Ox Head. L'Ovibos Musqué.
Ovibos moschatus.

921 John Perrett, Sherbrooke, Province of Quebec.

- A.—Group of Water Birds in a case of rock work.
- B.—A case of perching, climbing, and ground birds.
- C.—Group of Birds in winter plumage.
- D.—Birds mounted singly upon stands.
- E.—Mammals mounted singly upon stands and Mammal Heads.

(A) GROUP OF WATER BIRDS.

- 348 Horned Grebe. Le Grébe Cornu.
Colymbus auritus, L.
- 349 Pied-billed Grebe (male and female). La Grébe à Bec Bigarré.
Podilymbus podiceps, L.
- 350 Great Northern Diver. Le Plongeon à Collier
Urinator imber, Gunn.
- 351 Red-throated Loon. Le Plongeon du Nord.
Urinator lumme, Gunn.
- 352 Black Guillemot. Le Guillemot Noir.
Cephus grylle, L.
- 353 Razor-billed Auk. Le Pingouin Commun.
Alca torda, L.
- 354 Long-tailed Jaeger. Le Stercoraire de Buffon.
Stercorarius longicaudus, Vieillot.
- 355 Ivory Gull. La Mouette Blanche.
Gavia alba, Gunn.
- 356 Kittiwake Gull. La Mouette à Trois Doigts.
Rissa tridactyla, L.
- 357 American Herring Gull. Le Goeland Argenté.
Larus argentatus smithsonianus, Coues.
- 358 Bonaparte's Gull. Le Mouette de Bonaparte.
Larus philadelphia, Ord.
- 359 American Merganser (female and young male). Le Harle d'Amer-
[ique].
Merganser americanus, Cass.
- 360 Black Duck (male). Le Canard Noir.
Anas obscura, Gmelin.
- 361 American Widgeon (young male). Le Canard siffleur d'Amerique.
Anas americana, Gmelin.
- 362 Green-Winged Teal (male). Le Sarcelle à ailes vertes.
Anas carolinensis, Gmelin.
- 363 Pin-tail (male). Le Canard Pilet.
Dafila acuta, L.
- 364 Wood-duck. Le Canard Huppé.
Aix sponsa, L.

- 365 Red-head (male). Le Canard Milouin à tête Rousse.
Aythya americana, Eyt.
- 366 Canvas-back Duck (male). Le Canard Milouin aux yeux Rouges.
Aythya vallisneria, Wils.
- 367 American Golden-eye. Le Bucéphale d'Amerique.
Glaucionetta clangula americana, Bonap.
- 368 Old Squaw, (male.) Le Canard à Longue Queue.
Clangula hyemalis, L.
- 369 American Black Scoter (male). Le Canard Macreuse d'Amerique.
Oidemia americana, Sw. and Rich.
- 370 Ruddy Duck (female). Le Canard Roux.
Erismatura rubida, Wils.
- 371 Canada Goose. La Bernache du Canada.
Branta canadensis, L.
- 372 American Bittern. Le Butor.
Botaurus lentiginosus, Montag.
- 373 Least Bittern. Le Petit Butor.
Botaurus exilis, Gmel.
- 374 King Rail. Le Raleéi elegant.
Rallus elegans, Aud.
- 375 Virginia Rail. Le Rale de Virginie.
Rallus virginianus, L.
- 376 Wilson's Snipe (male and female). La Becassine de Wilson.
Gallinago delicata, Ord.
- 377 Least Sand-piper. La Maubèche de Wilson.
Tringa minutilla, Vieill.
- 378 Red-backed Sand-piper. La Maubèche à Dos roux.
Tringa alpina pacifica, Coues.
- 379 Greater Yellow-shanks. Le Chevalier Aboyeur.
Totanus melanoleucus, Gmel.
- 380 Least Yellow-shanks. Le Petit Chevalier à Pieds Jaunes.
Totanus flavipes, Gmel.
- 381 Ring-necked Plover. Le Pluvier semipalmé.
Aegialitis hiaticula, L.

382 Wilson's Plover. Le Pluvier de Wilson.
Agialitis wilsonia, Ord.

383 Belted Kingfisher. Le Martin Pêcheur.
Ceryle alcyon, L.

(B). GROUP OF PERCHING, CLIMBING, AND
GROUND BIRDS.

384 Virginia Rail. Le Rale de Virginie.
Rallus virginianus, L.

385 Wood-cock (male and female). La Bécasse d'Amerique.
Philohela minor, Gmel.

386 Wilson's Snipe (two males). La Bécassine de Wilson.
Gallinago delicata, Ord.

387 Solitary Sand-piper. Le Chevalier Solitaire.
Totanus solitarius, Wils.

388 Canada Grouse (male and female). Le Tétrás du Canada.
Dendragapus canadensis, L.

389 Ruffed Grouse (male). Le Lagopède des Saules.
Bonasa umbellus, L.

390 Northern sharp-tailed Grouse. La Gelinotte à Queue Aigue.
Pediocetes phasianellus, Linnaeus.

391 Sharp-shinned Hawk (male). L'Épervier Brun.
Accipiter velox, Wils.

392 Red-shouldered Hawk. La Buse à Manteau Roux.
Buteo lineatus, Gmel.

393 Pigeon Hawk (male). Le Faucon des Pigeons.
Falco columbarius, L.

394 American Sparrow Hawk (male). Le Faucon Épervier.
Falco sparverius.

395 American Long-eared Owl. Le Hibou à Aigrettes Longues.
Asio wilsonianus, Less.

396 Short-eared Owl. Le Hibou à Aigrettes Courtes.
Asio accipitrinus, Pall.

397 Barred Owl (with Weasel). La Chouette du Canada.
Syrnium nebulosum, Forst.

- 398 Richardson's Owl. La Nyctale de Richardson.
Nyctala tengmalmi richardsoni, Bonap.
- 399 Saw-whet or Acadian Owl. La Nyctale d'Acadie.
Nyctala acadica, Gmel.
- 400 Great Horned Owl (male and female). Le Duc de Virginie.
Bubo virginianus, Gmel.
- 401 American Hawk Owl. La Chouette Eperviere.
Surnia ulula caparoch, Mull.
- 402 Yellow-billed Cuckoo. Le Coucou d'Amerique.
Coccyzus americanus, L.
- 403 Belted Kingfisher. Le Martin-Pêcheur.
Ceryle alcyon, L.
- 404 Hairy Woodpecker (male). Le Pic Chevelu.
Dryobates villosus, L.
- 405 Downy Woodpecker (male). Le Pic Minule.
Dryobates pubescens, L.
- 406 Black-backed, three-toed Woodpecker (male and female).
Picoides arcticus, Swains. Le Pic Arctique.
- 407 Banded three-toed Woodpecker (male and female). Le Pic Velu.
Picoides americanus, Brehm.
- 408 Yellow-bellied Woodpecker (male and female) Le Pic Maculé.
Sphyrapicus varius, L.
- 409 Pileated Woodpecker (male). Le Pic à Huppé ecarlate.
Ceophloeus pileatus, L.
- 410 Yellow Hammer or Flicker (male). Le Pic Doré.
Colaptes auratus, L.
- 411 Chimney Swift. Le Martinet des Cheminées.
Chaetura pelagica, L.
- 412 Ruby-throated Humming Bird. Le Colibri à Gorge Rubis.
Trochilus colubris, L.
- 413 Bee-martin or King Bird. Le Tyran de la Caroline.
Tyrannus tyrannus, L.
- 414 Phœbe. Le Moucherolle Brun.
Sayornis Phœbe, Lath.

- 415 Wood Pewee. Le Moucherolle Verdâtre.
Contopus virens, L.
- 416 Blue Jay. Le Geai Huppé.
Cyanocitta cristata, L.
- 417 Canada Jay. Le Geai du Canada.
Perisoreus canadensis, L.
- 418 American Crow. La Corneille d'Amérique.
Corvus americanus, Aud.
- 419 Bobolink. Le Goglu.
Dolichonyx oryzivorus, L.
- 420 Cow Bird. L'Etourneau Ordinaire.
Molothrus ater, Bodd.
- 421 Red-and-buff-shouldered Black Bird (male). L'Etourneau à ailes
Rouges.
Agelaius phœniceus, L.
- 422 Baltimore Oriole. L'Oriole de Baltimore.
Icterus galbula, L.
- 423 American Pine Grosbeak. Le Bouvreuil du Canada.
Pinicola enucleator canadensis, Cab.
- 424 American Red Crossbill. Le Bec Croisé d'Amérique.
Loxia curvirostra minor, Brehm.
- 425 White-winged Crossbill (male and female). Le Bec Croisé à ailes
Blanches.
Loxia leucoptera, Gmel.
- 426 European House Sparrow. Le Moineau Domestique.
Passer domesticus, L. (An introduced species).
This specimen is of the nature of an albino, being a uniform light
gray colour.
- 427 Vesper Sparrow. Le Pinson des Guérets.
Pooecetes gramineus, Gmel.
- 428 White-crowned Sparrow. Le Pinson à Couronne Blanche.
Zonotrichia leucophrys, Forst.
- 429 Yellow-winged Sparrow. Le Pinson à Ailes Jaunes.
Ammodramus savannarum passerinus, Wilson.
- 430 Tree Sparrow. Le Pinson de Montagne.
Spizella monticola, Gmel.

- 431 Chipping Sparrow. Le Petit Pinson à Couronne Rousse.
Spizella socialis, Wils.
- 432 Field Sparrow. Le Pinson des Champs.
Spizella pusilla, Wils.
- 433 Rose-breasted Grosbeak. Le Gros Bec à Poitrine Rose.
Halia ludoviciana, L.
- 434 Indigo Bunting. Le Pinson Indigo.
Passerina cyanea, L.
- 435 Scarlet Tanager. Le Tangara Ecarlate.
Piranga erythromelas, Vieill.
- 436 White-bellied Swallow. L'Hirondelle Bicolore.
Tachycineta bicolor, Vieill.
- 437 Cedar Wax-wing. Le Jaseur du Cèdre.
Ampelis cedrorum, Vieill.
- 438 Vireo. Le Vireo.
Vireo, sp.
- 439 Blue Yellow-backed Warbler. La Fauvette d'Amerique.
Compothlypis americana, L.
- 440 Cape May Warbler. La Fauvette du Cap May.
Dendroica tigrina, Gmel.
- 441 Summer Yellow Bird. La Fauvette Jaune.
Dendroica aestiva, Gmel.
- 442 Yellow Rumped Warbler (male and female).
Dendroica coronata, L. La Fauvette à Croupion Jaune.
- 443 Magnolia Warbler. La Fauvette à tete Cendrée.
Dendroica maculosa, Gmel.
- 444 Chestnut-sided Warbler (male and female). La Fauvette de
Pennsylvanie.
Dendroica pensylvanica, L.
- 445 Blackburnian Warbler (male and female). La Fauvette de
Blackburn.
Dendroica blackburniæ, Gmel.
- 446 Black-throated Green Warbler. La Fauvette Poitrine Noire.
Dendroica virens, Gmel.
- 447 Maryland-yellow-throat. La Fauvette Trichas.
Geothlypis trichas, L.

- 448 Black-capped Warbler. La Fauvette de Wilson.
Sylvania pusilla, Wils.
- 449 American Redstart. La Fauvette Moucherolle Doré.
Setophaga ruticilla, L.
- 450 Cat Bird. Le Grive de la Caroline.
Galeoscoptes carolinensis, L.
- 451 House Wren. Le Troglodyte Ædon.
Troglodytes ædon, Vieill.
- 452 Wood Thrush. La Grive des Bois.
Turdus mustelinus, Gmel.
- 453 Blue Bird. Le Rouge Gorge Blue.
Sialia sialis, L.

(C.) GROUP OF BIRDS IN WINTER PLUMAGE.

- 454 Two Willow Ptarmigans. Le Lagopède des Saules.
Lagopus lagopus, L.
- 455 Great Gray Owl. La Chouette Cendrée.
Ulula cinerea, Gmel.
- 456 Snowy Owl. Le Harfang.
Nyctea nyctea, L.
- 457 Three Snow Buntings. Le Plectrophane des Neiges.
Plectrophenax nivalis, L.

(D). BIRDS MOUNTED SINGLY UPON STANDS.

- 458 Horned Grebe. Le Grebe Cornu.
Colymbus auritus, L.
- 459 Canadian Ruffed Grouse (male and female). La Gôlinotte du
Canada.
Bonasa umbellus togata, L.
- 460 Sharp-shinned Hawk. L'Epervier Brun.
Accipiter velox, Wils.
- 461 Cooper's Hawk. L'Epervier de Cooper.
Accipiter cooperi, Bonap.
- 462 American Gos Hawk. L'Autour à tete Noire.
Accipiter atricapillus, Wilson.
- 463 Red-tailed Hawk. La Buse à Queue Rousse.
Buteo borealis, Gmel.

- 464 Red-shouldered Hawk. La Buse à Manteau Roux.
Buteo lineatus, Gmel.
- 465 American Osprey. Le Balbusard de la Caroline.
Pandion haliaetus carolinensis, Gmel.
- 466 American-long-eared Owl. Le Hibou à Aigrettes longues.
Asio wilsonianus, Less.
- 467 Short eared Owl. Le Hibou à Aigrettes Courtes.
Asio accipitrinus, Pall.
- 468 Richardson's Owl. Le Nyctale de Richardson.
Nyctala tengmalmi richardsoni, Bonap.
- 469 Saw-whet or Acadian Owl. La Nyctale d'Acadie.
Nyctala acadica, Gmel.
- 470 Great-horned Owl. Le Duc de Virginie.
Bubo virginianus, Gmel.
- 471 American Hawk Owl. La Chouette Eperviere.
Surnia ulula caparoch, Mull.
- 472 King Bird or Bee Martin. Le Tyran de la Caroline.
Tyrannus tyrannus, L.
- 473 Phoebe. Le Moucherolle Brun.
Sayornis phoebe, Lath.
- 474 Canada Jay or Whisky Jack. Le Geai du Canada.
Perisoreus canadensis, L.
- 475 Butcher Bird or Great Northern Shrike. La Pie Grièche Boreale.
Lanius borealis, Vieill.

(E). MAMMALS MOUNTED SINGLY UPON STANDS
AND MAMMAL HEADS.

- 476 Northern Hare. Le Lièvre du Nord.
Lepus americanus virginianus, Harlan.
- 477 Musk Rat. L'Ondatra Musqué.
Fiber zibethicus, L.
- 478 Skunk. Le Zorille Varie.
Mephitis mephitis, Shaw.
- 479 Mink. Le Vison d'Amerique.
Putorius vison, Schreber.

- 480 Red Deer Heads. Le Cerf de Virginie.
Cariacus virginianus, Boddaert.
- 481 Moose Heads. L'Elan d'Amerique.
Alce alces americanus, Jardine.
- 482 Woodland Caribou or Reindeer Heads. Le Renne Caribou.
Rangifer tarandus caribu, Kerr.

COLLECTION OF BIRDS; MOUNTED IN CASES.

922 Col. Thos. J. Egan, Halifax, Nova Scotia.

CASE A.

Common Loon or Great Northern Diver. Le Plongeon à Collier.
Urinator imber, Gunner.

- 483 Male.
484 Female.
485 Two young ones.

Red-throated Diver. Le Plongeon du Nord.
Urinator lumme, Gunner.

- 486 Male.
487 Female.

Red-necked Grebe. Le Grebe à Cou Rouge.
Colymbus holboellii, Reinhardt.

- 488 Male.
489 Female.

Razor-billed Auk. Le Pingouin Commun.
Alca torda, Linnæus.

- 490 Two Males.
491 Female.

Puffin. Le Macareux Arctique.
Fratercula arctica, Linnæus.

- 492 Male.
493 Female.

Black Guillemot. Le Guillemot Noir.
Cephus grylle, Linnæus.

- 494 Male.
495 Female.
496 Young.

CASE B.

- White Gannet or Solan Goose. Le Fon de Bassan, ou Murgan.
Sula bassana, Linnæus.
 497 Male.
 498 Female.
- 499 Burgomaster Gull. Le Goeland à dos Bleuâtre.
Larus glaucus, Brunnich.
- 500 White-winged Gull. Le Goeland à Ailes Blanches.
Larus leucopterus, Faber.
- 501 Richardson's Jaeger. Le Stercoraire Arctique.
Stercorarius parasiticus, Linnæus.
- Arctic or Long-tailed Jaeger. Le Stercoraire de Buffon.
Stercorarius longicaudus, Vieillot.
 502 Two Males.
 503 Female.

CASE C.

- Double crested Cormorant. Le Cormoran à Aigrettes.
Phalacrocorax dilophus, Swainson and Richardson.
 504 Male.
 505 Female.
- Wandering Shearwater. Le Grand Puffin.
Puffinus major, Faber.
 506 Male.
 507 Female.
- 508 Arctic Jaeger. Le Stercoraire de Buffon.
Stercorarius longicaudus, Vieillot.
- Dusky Shearwater. Le Puffin Noir.
Puffinus auduboni, Finch.
 509 Male.
 510 Female.
- Fulmar. Le Petrel Glacial.
Fulmarus glacialis, Linnæus.
 511 Male.
 512 Female.
- Yellow-billed Tropic Bird. Le Phaeton.
Phaethon flavirostris, Brandt.
 513 Specimen of male.

CASE D.

514 Burgomaster Gull. Le Goeland à dos Bleuet.
Larus glaucus, Brunnich.

American Herring Gull. Le Goeland Argenté.
Larus argentatus smithsonianus, Cones.

515 Male.
516 Female.
517 Eggs.

Laughing Gull. La Mouette Rieuse.
Larus atricilla, Linnaeus.

518 Male.
519 Female.

520 Bonaparte's Gull. Le Goeland de Bonaparte.
Larus philadelphia, Ord.

Murre. Le Guillemot à Ventre Blanc.
Uria troile, Linnaeus.

521 Male in Summer.
522 Female in Winter.

Dokekie or Little Auk. Le Mergule Pigeon.
Alca alle, Linnaeus.

523 Male.
524 Female.

525 Dabchick or Little Grebe. Le Grebe à Bec Bigarre.
Podilymbus podiceps, Linnaeus.

Horned Grebe. Le Grebe Cormu.

526 Male.
527 Female.

CASE E.

Great Black-backed Gull. Le Goeland à Manteau Noir.
Larus marinus, Linnaeus.

528 Male.
529 Female.
530 Eggs.

Kittiwake Gull. La Mouette à Trois Doigts.
Larus tridactyla, Linnaeus.

531 Male.
532 Female.

Ivory Gull. La Mouette Blanche.
Gavia alba, Gunner.

533 Male.

534 Female.

Caspian Tern. La Sterne Caspienne.

Sterna tschegrara, Lepech.

535 Specimen of male.

Roseate Tern. La Sterne Rosée.

Sterna dougalli, Montague.

536 Specimen of male.

537 Common Tern. La Sterne de Wilson.

Sterna hirundo, Linnaeus.

538 Arctic Tern. La Sterne Arctique.

Sterna paradisaea, Brunn.

Black Tern. La Sterne Noire.

Hydrochelidon nigra surinamensis, Gmelin.

539 Young male.

540 Young female.

CASE F.

Canada Goose. La Bernache du Canada.

Branta canadensis, Linnaeus.

541 Specimen of male.

Brant Goose. La Bernache Commune.

Branta bernicla, Linnaeus.

542 Male.

543 Female (albino).

American Merganser. Le Harle d'Amérique.

Merganser americanus, Cass.

544 Male.

545 Female (*a*) and young specimens (*b*).

Hooded Merganser. Le Petit Harle.

Lophodytes cucullatus, Linnaeus.

546 Male.

547 Female.

CASE G.

Dusky Duck. Le Canard Noir.

Anas obscura, Gmelin.

548 Male.

549 Female (a) and young specimens. (b)

Mallard. Le Canard Ordinaire.

Anas boschas, Linnaeus.

550 Specimen of Male.

Shoveller. Le Canard Souchet.

Spatula clypeata, Linnæus.

551 Male.

552 Female.

American Widgeon. Le Canard Siffleur d'Amérique.

Anas americanus, Gmelin.

553 Male.

554 Female.

Wood Duck. Le Canard Huppé.

Aix sponsa, Linnaeus.

555 Male.

556 Female.

Blue-winged Teal. La Sarcelle à Ailes Bleues.

Anas discors, Linnaeus.

557 Male.

558 Female.

Green-winged Teal. La Sarcelle à Ailes Vertes.

Anas carolinensis, Gmelin.

559 Male.

560 Female.

CASE H.

Eider Duck. L' Eider Commnn.

Somateria moltissima borealis, Brehm.

561 Male.

562 Female.

563 Eggs.

564 Barrow's Golden Eye. Le Bucéphale d'Islande.

Glaucionetta islandica, Gmelin.

565 American Golden-Eye. Le Bucéphale d'Amérique.

Glaucionetta clangula americana, Bonaparte.

- Long-tailed Duck. Le Canard à Longue Queue.
Clangula hyemalis, Linnaeus.
 566 Male in summer.
 567 Male in winter.
 568 Female specimen.
- 569 American Scaup Duck. Le Morillon à tête Noire.
Aythya marila nearctica, Stejneger.

- 570 Buffle-head. Le Petit Bucéphale,
Charitonetta albeola, Linnaeus.

CASE I.

- King Eider. L'Eider Remarquable.
Somateria spectabilis, Linnaeus.
 571 Male.
 572 Female.
- American Scaup Duck. Le Morillon à tête Noire.
Aythya marila nearctica, Stejneger.
 573 Specimen of Male.

- Harlequin Duck. Le Canard Histrion.
Histrionicus histrionicus, Linnaeus.
 574 Male.
 575 Female.

- White-winged Scoter. La Macreuse Velonté.
Oidemia deglandi, Bonaparte
 576 Male.
 577 Female.

- Surf Scoter. Le Canard Macreuse à large Bec.
Oidemia perspicillata, Linnaeus.
 578 Specimen of Male.

- American Scoter. Le Canard Macreuse d'Amerique.
Oidemia americana, Swainson and Richardson.
 579 Specimen of Male.

- Red-breasted Merganser. Le Harle à Poitrine Rousse.
Merganser serrator, Linnaeus.
 580 Male.
 581 Female.

CASE J.

Great Blue Heron. Le Grand Héron Bleu.

Ardea herodias, Linnæus.

- 582 Male.
583 Female.
584 Young specimens and eggs.

American Coot. La Foulque d'Amérique.

Fulica americana, Gmelin.

- 585 Male.
586 Female.

American Woodcock. Le Bécasse d'Amérique.

Philohela minor, Gmelin.

- 587 Male.
588 Female.
589 Nest and eggs.

Wilson's Snipe. La Bécassine de Wilson.

Gallinago delicata, Ord.

- 590 Male.
591 Female.
592 Young.

CASE K.

Great Blue Heron. Le Grand Héron Bleu.

Ardea herodias, Linnæus.

- 593 Specimen in young plumage.

American Bittern. Le Butor.

Botaurus lentiginosus, Montag.

- 594 Male.
595 Female.
596 Specimen of young.

Green Heron. Le Héron Vert.

Ardea virescens, Linnæus.

- 597 Specimen of Male.

Least Bittern. Le Petit Butor.

Botaurus exilis, Gmelin.

- 598 Specimen of Male.

Virginia Rail. Le Rale de Virginie.

Rallus virginianus, Linnæus.

- 599 Specimen of Male.

Common Rail or Sora. Le Rale de la Caroline.

Porzana porzana, Linnaeus.

600 Male.

601 Female.

Least or Black Rail. Le Rale Noir.

Porzana jamaicensis, Gmelin.

602 Specimen of male.

Common Gallinule. La Gallinule de la Floride.

Gallinula galeata, Licht.

603 Male.

604 Female.

Hudsonian Curlew. Le Courlis de la Baie d'Hudson.

Numenius hudsonicus, Lath.

605 Male.

606 Female.

CASE L.

Brown Pelican. Le Pélican Brun.

Pelecanus fuscus, Linnaeus.

607 Specimen of Male.

American Great White Egret. Le Héron Blanc.

Ardea egretta, Gmelin.

608 Specimen of Male.

Black-crowned Night Heron. Le Héron du Nuit.

Nycticorax nycticorax naevius, Bodd.

609 Male.

610 Young Female.

King Rail. Le Rale Éléphant.

Rallus elegans, Audubon.

611 Male.

612 Female.

Little Blue Heron. Le Petit Héron Bleu.

Ardea coerulesca, Linnaeus.

613 Specimen of male.

Lapwing. La Vameau Huppé.

Vanellus cristatus.

614 Specimen collected in Canada,—the species being a European one.

CASE M.

Great Marbled Godwit. La Barge Marbrée.

Limosa fedoa, Linnæus.

- 615 Male.
616 Female.

Hudsonian Godwit. La Barge de la Baie d'Hudson.

Limosa haemastica, Linnæus.

- 617 Male.
618 Female.

Willet. Le Chevalier Semipalmé.

Symphemia semipalmata, Gmelin.

- 619 Male.
620 Female.

American Golden Plover. Le Pluvier Doré.

Charadrius dominicus, Müller.

- 621 Specimen of Female.

Black-bellied Plover. Le Squatarole à Ventre Noir.

Charadrius squatarola, Linnæus.

- 622 Male.
623 Female.

Greater Yellow Legs. Le Chevalier Aboyeur.

Totanus melanoleucus, Gmelin.

- 624 Male.
625 Female.

Lesser Yellow Shanks. Le Petit Chevalier à pieds Jaunes.

Totanus flavipes, Gmelin.

- 626 Male.
627 Female.

Piping Plover. Le Pluvier Criard.

Ægialitis meloda, Ord.

- 628 Specimen of Male.

Kildeer Plover. Le Pluvier Kildir.

Ægialitis vocifera, Linnæus.

- 629 Specimen of Male.

Ring-neck Plover. Le Pluvier Semipalmé.

Ægialitis semipalmata, Bonaparte.

- 630 Male.
631 Female.

Spotted Sand-piper. La Maubeche Tachetée.
Actitis macularia, Linnaeus.

- 632 Male.
633 Female.
634 Specimens of young.

Solitary Sand-piper. Le Chevalier Solitaire.
Totanus solitarius, Wilson.

- 635 Male.
636 Female.

Sanderling. Le Sanderling.
Calidris arenaria, Linnaeus.

- 637 Male.
638 Female.

Least Sand-piper. La Maubéche de Wilson.

- Tringa minutilla*, Vieillot.
639 Specimen of Male.

Pectoral Sand-piper. La Maubéche Tachetée.
Tringa maculata, Vieillot.

- 640 Male.
641 Female.

Buff-breasted Sand-piper. La Maubéche à Poitrine jaunâtre.
Tringites subruficollis, Vieillot.

- 642 Male.
643 Female.

Long-legged Sand-piper. L'Echasse à Long Pieds.
Micropalama himantopus, Bonaparte.

- 644 Male.
645 Female.

Knot, or Ash-colored Sand-piper. La Maubéche a Poitrine
Rousse.
Tringa canutus, Linnaeus.

- 646 Male.
647 Female.

Purple Sand-piper. La Maubéche Pourpre.
Tringa maritima, Brunn.

- 648 Male.
649 Female.

Turnstone. Le Tournepierre à Poitrine Noire.
Arenaria interpres, Linnaeus.

- 650 Male.
651 Female.
652 Young male.

Wilson's Phalarope. Le Phalarope de Wilson.
Phalaropus tricolor, Vieillot.

- 653 Male.
654 Female.

Red Phalarope. Le Phalarope Roux.
Crymophilus fulicarius, Linnaeus.

- 655 Male.
656 Female.

Northern Phalarope. Le Phalarope Hyperboréen.
Phalaropus lobatus, Linnaeus.

- 657 Male.
658 Female.
659 Male in winter plumage.

CASE N.

Canada Grouse. Le Tétrás du Canada.
Dendragapus canadensis, Linnaeus.

- 660 Male.
661 Female.

Canadian Ruffed Grouse. La Gélímotte à Fraise.
Bonasa umbellus togata, Linnaeus.

- 662 Male.
663 Female.
664 Specimens of young.

Dusky Grouse.
Dendragapus obscurus, Say.

- 665 Male.
666 Female.

Willow Grouse. Le Lagopède des Saules.
Lagopus lagopus, Linnaeus.

- 667 Male.
668 Female.

Rock Ptarmigan. Le Lagopède des Rochers.
Lagopus rupestris, Gmelin.

- 669 Specimen of Male.

Sharp-tailed Grouse. Le Gélinoite à Queue Aigue.
Pedioetes phasianellus, Linnaeus.

- 670 Male.
671 Female.

Pinnated Gronse or Prairie Hen. La Gélinoite des Prairies.
Tympanuchus americanus, Reich.

- 672 Male.
673 Female.

Virginia Quail or "Bob White." La Caille.
Colinus virginianus, Linnaeus.

- 674 Male.
675 Two specimens of Female.

CASE O.

676 Willow Grouse. Le Lagopède des Sanles.
Lagopus lagopus, Linnaeus.

Specimens exhibiting all the seasonal changes of plumage.

CASE P.

677 Bald Eagle. L'Aigle à tete Blanche.
Haliaetus leucocephalus, Linnaeus.
A pair of mature birds with their young.

CASE Q.

678 Golden Eagle. L'Aigle du Canada.
Aquila chrysaetos, Linnaeus.

Marsh Harrier. Le Busard des Marais.
Circus hudsonius, Linnaeus.

- 679 Male.
680 Female.

Sharp-shinned Hawk. L'Epervier Brun.
Accipiter velox, Wilson.

- 681 Male.
682 Female.
683 Specimens of young.

American Sparrow Hawk. Le Faucon Epervier.
Falco sparverius, Linnaeus.

- 684 Male.
685 Female.

Pigeon Hawk. Le Faucon des Pigeons.
Falco columbarius, Linnaeus.

- 686 Male.
687 Female.
688 Nest and Eggs.

American Sparrow Hawk. Le Faucon Epervier.
Falco Sparverius, Linnaeus.

- 689 Specimen of young male.

690 Turkey Vulture. Le Vautour Aura.
Cathartes aura, Linnaeus.

CASE R.

American Osprey or Fish Hawk. Le Balbusard de la Caroline.
Pandion haliaetus carolinensis, Gmelin.

- 691 Male.
692 Female.
693 Young Specimens.

Duck Hawk. Le Faucon Pèlerin.
Falco peregrinus anatum, Bonaparté.

- 694 Male.
695 Female.

Red-tailed Hawk. La Buse à Queue Rousse.
Buteo borealis, Gmelin.

- 696 A specimen in first plumage.

CASE S.

American Goshawk. L'Autour à tête Noire.
Accipiter atricapillus, Wilson.

- 697 Male.
698 Female.
699 Specimens of young.

Red-tailed Hawk. La Buse à Queue Rousse.
Buteo borealis, Gmelin.

- 700 Male.
701 Female.
702 Specimens of young.

- Gray Gyr-falcon. Le Faucon Noir.
Falco rusticolus, Linnæus.
 703 Specimen of male.

CASE T.

- American rough-legged Buzzard. La Buse Pattue d'Amérique.
Archibuteo lagopus sancti-johannis, Gmelin.
 704 Male.

705 Female in first plumage.

- Broad-winged Hawk. La Buse de Pennsylvanie.
Buteo latissimus, Wilson.
 706 Specimen of male.

- American Hawk Owl. La Chouette Eperviere d'Amérique.
Surnia ulula caparoch, Muller.
 707 Male.
 708 Female.

- Great Gray Owl. La Chouette Cendrée.
Uta cinerea, Gmelin.
 709 Specimen of Male.

- 710 Western Horned Owl. Le Duc de Virginie.
Bubo virginianus subarcticus, Hoy.

- Sharp-shinned Hawk. L'Epervier Brun.
Accipiter velox, Wilson.
 711 Specimen in young plumage.

CASE U.

- Great Horned Owl. Le Duc de Virginie.
Bubo virginianus, Gmelin.
 712 Male.
 713 Female.
 714 Specimens of young.

- Barred Owl. La Chouette du Canada.
Syrnium nebulosum, Forster.
 715 Male.
 716 Female.

Snowy Owl. Le Harfang.

Nyctea nyctea, Linnaeus.

717 Male.

718 Female.

Short-eared Owl. Le Hibou à Aigrette Courtes.

Asio accipitrinus, Pallas.

719 Male.

720 Female.

American Long-eared Owl. Le Hibou à Aigrettes Longues.

Asio wilsonianus, Lesson.

721 Male.

722 Female.

Acadian Owl. La Nyctale d'Acadie.

Nyctala acadia, Gmelin.

723 Male.

724 Female.

Richardson's Owl. La Nyctale de Richardson.

Nyctala tengmalmi richardsoni, Bonaparte.

725 Male.

726 Female.

CASE V.

Northern Raven. Le Corbeau du Nord.

Corvus corax principalis, Ridgway.

727 Specimen of male.

American Crow. La Corneille d'Amérique.

Corvus americanus, Audubon.

728 Male.

729 Female.

Red-winged Blackbird. L'Etourneau à Ailes Rouges.

Agelaius phoeniceus, Linnaeus.

730 Male.

731 Female.

732 Specimen of young male.

Rusty Grackle or Thrush Blackbird. La Maimate Couleur de Rouille.

Scolecophagus carolinus, Müller.

733 Male.

734 Female.

Bronzed Grackle or Crow Blackbird. Le Mainate Bronzé.
Quiscalus quiscula aeneus, Ridgway.
 735 Specimen of Male.

Belted Kingfisher. Le Martin Pêcheur.
Ceryle alcyon, Linnæus.
 736 Male.
 737 Female.
 738 Albino specimen.

Hairy Woodpecker. Le Pic Chevelu.
Dryobates villosus leucomelas, Bodd.
 739 Specimen of male.

Downy Woodpecker. Le Pic Minnie.
Dryobates pubescens, Linnæus.
 740 Male.
 741 Female.

Arctic Three-toed Woodpecker. Le Pic Arétique.
Picoides arcticus, Swainson.
 742 Male.
 743 Female.

Yellow-bellied Sap-sucker. Le Pic Maenlé.
Sphyrapicus varius, Linnæus.
 744 Specimen of Male.

Pileated Woodpecker. Le Pic à Huppé Ecarlate.
Ceophloeus pileatus, Linnæus.
 745 Two specimens.

Red-headed Woodpecker. Le Pic à tête Rouge.
Melanerpes erythrocephalus, Linnæus.
 746 Specimen of male

Golden-winged Woodpecker or Flicker. Le Pic Doré.
Colaptes auratus, Linnæus.
 747 Male.
 748 Female.

Night Hawk. L'Engoulevent d'Amérique.
Chordeiles virginianus, Gmelin.
 749 Male.
 750 Specimen of young.

Whip-poor-will. L'Engoulevent Criard.
Antrostomus vociferus, Wilson.
 751 Specimen of Male.

752 Jackdaw. Le Choucas des Tours.
Corvus monedula.

The Jackdaw is a European species: this specimen was taken in Nova Scotia.

CASE W.

Passenger Pigeon. Le Pigeon Voyageur.
Ectopistes migratorius, Linnaeus.
 753 Male.
 754 Female.

Mourning or Carolina Dove. La Tourterelle de la Caroline.
Zenaidura macroura, Linnaeus.
 755 Male.
 756 Female.

Yellow-bellied Cuckoo. Le Coucou d'Amérique.
Coccyzus americanus, Linnaeus.
 757 Specimen of Male.

Black-billed Cuckoo. Le Coucou à Bec Noir.
Coccyzus erythrophthalmus, Wilson.
 758 Male.
 759 Female.
 760 Nest and eggs.

King-bird or Bee Martin. Le Tyran de la Caroline.
Tyrannus tyrannus, Linnaeus.
 761 Specimen of Male.

Olive-sided Flycatcher. La Moucherolle à Côtes Olive.
Contopus borealis, Swainson.
 762 Male.
 763 Female.

Wood Pewee. Le Moucherolle Verdâtre.
Contopus virens, Linnaeus.
 764 Male.
 765 Female.

Shore or Horned Lark. L'Alouette ordinaire ou de Virginie.
Otocoris alpestris, Linnaeus.

- 766 Male.
767 Female.

Meadow Lark. L'Etourneau des Prés.
Sturnella magna, Linnaeus.

- 768 Specimen of Female.

Purple Finch. Le Pinson Pourpre.
Carpodacus purpureus, Gmelin.

- 769 Male.
770 Female.
771 Nest and eggs.

Common Red-poll. Le Sizerin à tête Rouge.
Acanthis linaria, Linnaeus.

- 772 Male.
773 Female.

American Gold-finch. Le Chardonneret Jaune.
Spinus tristis, Linnaeus.

- 774 Male.
775 Female.

Pine Siskin. Le Chardonneret des Pins.
Spinus pinus, Wilson.

- 776 Male.
777 Female.

Snow Bunting. Le Plectropane des Neiges.

- Plectrophenax nivalis*, Linnaeus.
778 Male.
779 Female.

Savanna Sparrow. Le Pinson de Savanna.
Ammodramus princeps, Mayn.

- 780 Male.
781 Female.

White-throated Sparrow. Le Pinson à Gorge Blanche.
Zonotrichia albicollis, Gmelin.

- 782 Male.
783 Female.
784 Nest and eggs.

Tree Sparrow. Le Pinson de Montagne.

Spizella monticola, Gmelin.

785 Male in winter.

786 Female in summer.

Eastern Snow-bird. Le Pinson Niverolle.

Junco hyemalis, Linnæus.

787 Female with nest and eggs.

Song Sparrow. Le Pinson Chanteur.

Melospiza fasciata, Gmelin.

788 Male.

789 Female.

790 Nest and eggs.

Swamp Sparrow. Le Pinson de Marais.

Melospiza georgiana, Lath.

791 Male.

792 Female.

Fox Sparrow. Le Pinson Fauve.

Passerella iliaca, Merr.

793 Male.

794 Female.

Red-eyed Vireo. Le Vireo aux Yeux Rouges.

Vireo olivaceus, Linnæus.

795 Male.

796 Female.

Warbling Vireo. Le Vireo Gris.

Vireo gilvus, Vieillot.

797 Specimen of male.

Solitary Vireo. Le Vireo à Tête Bleuâtre.

Vireo solitarius, Wilson.

798 Male.

799 Female.

Black and White Warbler. Le Grimpereau Noir et Blanc.

Mniotilta varia, Linnæus.

800 Male.

801 Female.

Blue-yellow-backed Warbler. La Fauvette d'Amérique.
Compothlypis americana, Linnaeus.

802 Male.

803 Female.

Cape May Warbler. La Fauvette du Cap May
Dendroica tigrina, Gmelin.

804 Male.

805 Female.

Yellow Warbler. La Fauvette Jaune.
Dendroica aestiva, Gmelin.

806 Male.

807 Female.

808 Nest.

Black-throated Blue Warbler. La Fauvette Bleu à Gorge Noire.
Dendroica caerulescens, Gmelin.

809 Specimen of male.

Yellow-rumped Warbler. La Fauvette à Croupion Jaune.
Dendroica coronata,

810 Male.

811 Female.

Magnolia Warbler. La Fauvette à tête Cendrée.
Dendroica maculosa, Gmelin.

812 Specimen of male.

Chestnut-sided Warbler. La Fauvette de Pensylvanie.
Dendroica pensylvanica, Linnaeus.

813 Male.

814 Female.

Bay-breasted Warbler. La Fauvette à Poitrine Baie.
Dendroica castanea, Wilson.

815 Male.

816 Female.

Black-poll Warbler. La Fauvette Rayée.
Dendroica striata, Forster.

817 Male.

818 Female.

Blackburnian Warbler. La Fauvette de Blackburn.
Dendroica blackburnii, Gmelin.

819 Male.

820 Female.

Black-throated Green Warbler. La Fauvette à Poitrine Noire.
Dendroica virens, Gmelin.

821 Male.

822 Female.

Yellow Red-poll or Palm Warbler. La Fauvette à tête Rousse.
Dendroica palmarum hypochrysea, Ridgway.

823 Male.

824 Female.

Nashville Warbler. La Fauvette de Nashville.
Helminthophila ruficapilla, Wilson.

825 Male.

826 Female.

Maryland Yellow-throat. La Fauvette Trichas.
Geothlypis trichas, Linnaeus.

827 Male.

828 Female.

American Redstart. La Fauvette Moucherolle Dorée.
Setophaga ruticilla, Linnaeus.

829 Male.

830 Female.

831 Nest and eggs.

Canadian Fly-catching Warbler. La Fauvette Moucherolle du
Canada.

Sylvania canadensis, Linnaeus.

832 Male.

833 Female.

Chipping Sparrow. Le Petit Pinson à Couronne Rousse.
Spizella socialis, Wilson.

834 Specimen of male.

CASE X.

Ruby-throated Humming Bird. Le Colibra à Gorge Rubis.
Trochilus colubris, Linnaeus.

835 Male.

836 Female.

837 Nest and eggs.

Blue Jay. Le Geai Huppé.
Cyanocitta cristata, Linnaeus.

838 Male.

839 Female.

Canada Jay or Whistly Jack. Le Geai du Canada
Perisoreus canadensis, Linnæus.

840 Male.

841 Female.

Rice-bird or Bobolink. Le Goglu.

Delichonya oryzivorus, Linnæus.

842 Specimen of male.

American Pine Grosbeak. Le Bouvreuil du Canada.

Pinicola enucleator canadensis, Cab.

843 Male.

844 Female.

White-winged Crossbill. Le Bec-croisé à Ailes Blanches.

Loxia leucoptera, Gmelin.

845 Male.

846 Female.

847 Nest and young.

American Red Crossbill. Le Bec-croisé d'Amérique.

Loxia curvirostra minor, Brehm.

848 Male.

849 Female.

850 Nest and eggs.

Scarlet Tanager. Le Tangara écarlate.

Piranga erythromelas, Vieillot.

851 Male.

852 Female.

Bohemian Wax-wing. Le Jaseur de Bohême.

Ampelis garrulus, Linnæus.

853 Specimen of Female.

Cedar Wax-wing. Le Jaseur du Cèdre.

Ampelis cedrorum.

854 Male.

855 Female.

856 Nest and eggs.

857 Female in first plumage.

Northern Shrike. La Pie Grêche Boréale.

Lanius borealis, Vieillot.

858 Male.

859 Female.

860 Female in first plumage.

Cat-bird. La Grive de la Caroline.

Galeoscoptes carolinensis, Linnaeus.
861 Male.
862 Female.

Winter Wren. Le Troglodyte d'Hiver.

Troglodytes hiemalis, Vieillot.
863 Specimen of Male.

Brown Creeper. Le Grimperau d'Amérique.

Certhia familiaris americana, Bonaparte.
864 Male.
865 Female.

White-breasted Nuthatch. La Sittelle de la Caroline.

Sitta carolinensis, Lath.
866 Specimen of male.

Red-breasted Nuthatch. La Sittelle du Canada.

Sitta canadensis, Linnaeus.
867 Specimen of male.

Hudsonian Chickadee. La Mésange de la Baie d'Hudson.

Parus hudsonicus, Forster.
868 Male.
869 Female.

Black-capped Chickadee. La Mésange à tête Noire.

Parus atricapillus, Linnaeus.
870 Specimen of male.

Golden-crowned Kinglet. Le Roitelet Huppé.

Regulus satrapa, Licht.
871 Male.
872 Female.

Ruby-Crowned Kinglet. Le Roitelet à Couronne Rubis.

Regulus calendula, Linnaeus.
873 Male.
874 Female.

Water-thrush. La Grive Hochequeue.

Seiurus noreboracensis, Gmelin.
875 Specimen of male.

Golden-crowned Thrush or Over Bird. La Grive Couronnée.
Seiurus aurocapillus, Linnæus.

- 876 Male.
 877 Female.
 878 Nest and eggs.

Wilson's Thrush. La Grive de Wilson.
Turdus fuscescens, Steph.

- 879 Male.
 880 Female.

Olive-backed Thrush. La Grive de Swainson.
Turdus ustulatus swainsonii, Cab.

- 881 Male.
 882 Female.
 883 Nest and eggs.

Hermit Thrush. La Grive Solitaire.
Turdus aonalaschke pallasii, Cab.

- 884 Male.
 885 Female.
 886 Nest and eggs.

American Robin. Le Merle d'Amérique.
Merula migratoria, Linnæus.

- 887 Male.
 888 Female.

Brown Thrasher. La Grive Rousse.
Harporhynchus rufus, Linnæus.

- 889 Specimen of male.

- 923 Dominion of Canada, Department of Marine and Fisheries. Sir Louis H. Davies, K.C.M.G., Minister. Lieut.-Col. Gourdeau, Deputy Minister. Professor Andrew Halkett, Naturalist.

Mounted Fishes and Crustaceans.

Marine Invertebrates, small fishes, etc., arranged in case in a series of trays.

Miscellaneous Specimens, embracing Shells of Lamellibranches, Echinoderms, etc.

Models of Canoes, and Fishing Gears.

MOUNTED FISHES AND CRUSTACEANS.

- 890 California Dog-Fish. L'Aiguillat de Californie.

Squalus sucklii, Girard

Female From British Columbia.

MOUNTED ON STANDARDS.

- 891 Picked Dog-Fish. L'Aiguillat Commun.

Squalus acanthias, Linnæus.

Specimen from Gulf of St. Lawrence.

- 892 Porbeagle or Mackerel Shark. La Lamie.

Lamna cornubica, Gmelin.

Female from Grand Manan, New-Brunswick; also Foetus of Shark from the same locality.

Loaned by Mr. Henry Gatehouse, of Montreal.

- 893 Male from Gulf of St. Lawrence.

- 894 Female from Gulf of St. Lawrence.

- 895 Barn-door Skate. La Raie.

Raja laevis, Mitchill.

Female from New Brunswick.

- 896 (A) Rat-Fish or Elephant-fish. La Chimère de Collie.

Chimaera colliei, Bennett.

Male, female, and egg-capsule from Coast of British Columbia.

- (B) Bowfin or Dog-fish. Poisson de Vase.

Amia calva, Linnæus.

Two specimens from Lake Ontario.

- 897 Common Gar-pike. Le Lepidostée Osseux.
Lepidosteus osseus, Linnaeus.
 Male from Deschene Lake, Province of Quebec.
 MOUNTED ON STANDARDS.
- 898 (A) Common Gar-pike. Le Lepidostée Osseux.
Lepidosteus osseus, Linnaeus.
 Specimen from Ottawa River.
- (B) Lake Sturgeon. L'Esturgeon des Lacs.
Acipenser rubicundus, LeSueur.
 Specimen from Lake Ontario.
- 899 Common Sturgeon. L'Esturgeon Commun.
Acipenser sturio oxyrhynchus, Mitchill.
 Seven specimens from Lake Erie.
- 900 A specimen some eight feet long, from Gulf of St. Lawrence.
- 901 White Sturgeon. L'Esturgeon Blanc.
Acipenser transmontanus, Richardson.
 Specimen from mouth of Fraser River, British Columbia. 150
 lbs. weight.
- 902 Paddle Fish. L'Esturgeon Spatulaire.
Polyodon spathula, Walbaum.
 Specimen from Lake Huron, near Sarnia, Ontario.
- 903 (A) Common Cat-fish or Bull-head. La Barbotte.
Ameiurus nebulosus, Le Sueur.
 Two specimens from Lake Ontario.
- (B) Great Fork-tailed or Mississippi Cat. La Barbue.
Ameiurus lacustris, Walbaum.
 Specimen from Lake Ontario.
- 904 Great Fork-tailed or Mississippi Cat. La Barbue.
Ameiurus lacustris, Walbaum.
 Two specimens from Red River, Manitoba.
- 905 Buffalo-Fish. Le Buffle Poisson.
Ictiobus bubalus, Rafinesque.
 Three specimens from Lake Winnipeg.

- 906 (A) Small-scaled Sucker. Le Cyprin Commersonnien.
Catostomus commersonii, Lacépède.
 Two specimens from Lake Ontario.
- (B) Large-scaled Sucker. Le Moxostôme Doré.
Moxostoma aureolum, Le Sueur.
 Specimen from Lake Ontario.
- 907 Large-scaled Sucker. Le Moxostôme Doré.
Moxostoma aureolum, Le Sueur.
 Two specimens from Lake Winnipeg, North West Territories.
- 908 Moon-eye or Toothed Herring. L'Hydon Tergisse.
Hiodon tergisus, Le Sueur.
 Five specimens from Lake Ontario.
- 909 Common Herring. Le Hareng Commun.
Clupea harengus, Linnaeus.
 Specimens from Magdalen Islands.
- 910 American Shad. L'Alose d'Amerique.
Clupea sapidissima, Wilson.
 A specimen from River St. Lawrence.
- 911 American Smelt. L'Eperlan d'Amerique.
Osmerus mordax, Mitchill.
 Eight specimens from Miramichi River, New Brunswick.
- 912 Common White Fish. Le Poisson Blanc.
Coregonus clupeiformis, Mitchill.
 (A), (D), (E), 3 small specimens from Lake Simcoe, Ontario.
 (B), (C), 2 large specimens from North West Territories.
- 913 Cisco or Lake Herring. Le Scisco.
Coregonus artedi, Le Sueur.
 Six specimens from Lake Erie.
- 914 Quinnat or Chinook Salmon. Le Quinnat.
Oncorhynchus tshawytscha, Walbaum.
 Specimen from British Columbia.
- 915 Quinnat or Chinook Salmon. Le Quinnat.
Oncorhynchus tshawytscha, Walbaum.
 Five small specimens, reared by Samuel Wilmot, Esq., Fish Culturist, in his garden, Newcastle, Ont; 4 years old; eggs from California.

- 916 (A) Blue-back Salmon, or Suck-eye. Le Nerka.
Oncorhynchus nerka, Walbaum.
 Specimen from New Westminster, British Columbia.
- (B) Dog-salmon. Le Keta.
Oncorhynchus keta, Walbaum.
 Two specimens from Coast of British Columbia.
- 917 (A) Ouananiche. L'Huananiche.
Salmo salar ouananiche, McCarthy.
 Specimen from Lake St. John, head of Saguenay River, Province
 of Quebec.
- (B) Atlantic salmon. Le saumon commun.
Salmo salar, Linnaeus.
 Specimen from Restigouche River.
- 918 Atlantic salmon. Le Saumon Commun.
Salmo salar, Linnaeus.
 Two specimens from Lake Ontario.
- 919 Salmon Trout, or Great Lake Trout. La Truite des Laes.
Salvelinus namaycush, Bloch.
- (A) Specimen from Lake Superior, Ontario.
- (B) Specimen from Lake Huron, Ontario.
- 920 Speckled or Brook Trout. Le Truite des Ruisseaux ou Tacheté.
Salvelinus fontinalis, Mitchill.
- (A) Two specimens from Rock Lake, Haliburton County, Ontario.
 From Mr. Andrew Fleck, of Parry Sound Railway.
- (B) A specimen from Nepigon Bay, Lake Superior, Ontario.
- 921 Speckled or Brook Trout. La Truite des Ruisseaux ou Tacheté.
Salvelinus fontinalis, Mitchill.
- (A) Two specimens from German Lake, Province of Quebec.
- (B) A specimen from Restigouche River.
- 922 Red-spotted or Dolly Varden Trout. La Truite "Dolly Varden."
Salvelinus malma, Walbaum.
 Two specimens from Coquitlam River, a tributary of Fraser
 River, British Columbia.
- 923 Green Pike. Le Brochet Réticulé.
Esox reticulatus, Le Sueur.
 Four specimens from Lake Memphremagog, Province of Quebec.

ritories.

k.

Ontario.
 ritories.

Fish Cul-
 old; eggs

- 924 Common Pike. Le Brochet Commun.
Esox lucius, Linnaeus.
 Two specimens from North West Territories.
- 925 (A) Common Pike. Le Brochet Commun.
Esox lucius, Linnaeus.
 Specimen from Lake Ontario. Also a very small specimen from same locality.
 (B) Muskellunge. Le Maskinongé.
Esox nobilior, Thompson.
 Specimen from Bay of Quinte, Ontario, 35 lbs weight.
- 926 Muskellunge. Le Maskinongé.
Esox nobilior, Thompson.
 (A) Specimen from Bay of Quinte.
 (B) Specimen from Rideau River, 16 lbs. weight.
- 927 American Eel. L'Anguille d'Amérique.
Anguilla anguilla rostrata, Le Sueur.
 Specimen from Rideau River, Ontario. Collected by Mr. J. M. Lalonde, Department of Marine and Fisheries.
- 928 (A), (C), Common Mackerel. Le Maquereau Commun.
Scomber scombrus, Linnaeus.
 Four specimens from Gulf of St. Lawrence.
 (B), Spanish Mackerel. Le Tassard Tacheté.
Scomberomorus maculatus, Mitchill.
 Two specimens from Gulf of St. Lawrence.
- 929 Tunny or Horse Mackerel. Ta Thonine, ou Touna. Le Thon.
Thynnus thynnus, Linnaeus.
 Specimen from Saguenay District.
 Mounted on Standards.
 Weight some 400 lbs.
- 930 Two Swords of Sword-fish. L'Espadon.
Xiphias gladius, Linnaeus.
 From Atlantic coast of Canada..
- 931 (A) Calico Bass or Strawberry Bass. Le Crapet Calicot.
Pomoxys sparoides, Lacépède.
 Two specimens from Burlington Bay, Ontario.

- (B) Striped Bass. Le Bar Americain.
Roccus lineatus, Bloch.
 Five specimens from Miramichi River, New Brunswick.
- (C) White Bass. Le Bar Blanc.
Roccus chrysofs, Rafinesque.
 Two specimens from Lake Erie, Ontario.
- 932 Striped Bass. Le Bar Américain.
Roccus lineatus, Bloch.
 Two specimens from Miramichi River, New Brunswick.
- 933 (A), (B), (E), (F), Rock Bass. Le Crapet Vert.
Ambloplites rupestris, Rafinesque.
 Four specimens from Lake Ontario.
- (C), (D), Sun Fish. Le Crapet Jaune.
Lepomis gibbosus, Linnaeus.
 Two specimens from Lake Ontario.
- 934 (A), Large mouthed Black Bass. L'Achigan Grande Bouche.
Micropterus salmoides, Lacépède.
 A specimen from Lake Erie, Ontario.
- (B) Small mouthed Black Bass. L'Achigan Petite Bouche.
Micropterus dolomieu, Lacépède.
 A specimen from Rice Lake, Ontario.
- 935 Small-mouthed Black Bass. L'Achigan Petite Bouche.
Micropterus dolomieu, Lacépède.
 Five specimens from Bay of Quinte.
- 936 Yellow Perch. La Perche.
Perca flavescens, Mitchill.
 Five specimens from Bay of Quinte.
- 937 Pike-perch. Le Grand Dorè.
Stizostedion vitreum, Mitchill.
 (A) Two specimens from Rideau Lake.
 (B) A specimen from Lake Huron.
- 938 Sheepshead or Fresh water Drum. Le Malachigan.
Aplodinotus grunniens, Rafinesque.
 (A) A specimen from Detroit River, Ontario.
 (B) A specimen from Ottawa River.

men from

r. J. M.

Thon.

- 939 (A) Rock-trout or Boregat. Le Boregat.
Hexagrammos decagrammus, Pallas.
 Specimen from Esquimalt Harbour, British Columbia.
 (B), (C), Cultus Cod. La Morne Cultus.
Ophiodon elongatus, Girard.
 Two specimens from Victoria, Vancouver Island.
 Obtained in deep water.
- 940 Snapper. Le Sébaste.
Sebastes mariuus, Linnaeus.
 A specimen from Atlantic coast of Canada.
- 941 Red Rock-fish. Le Tambor.
Sebastes ruberrimus, Cramer.
 A specimen from Coast of British Columbia.
- 942 (A) Lump-fish. Le Cycloptere Lompe.
Cyclopterus lumpus, Linnaeus.
 A specimen from Gulf of St. Lawrence.
 (B) Common Sculpin. Le Grand Chaboisseau à dix-huit épine
 de l'Amérique du Nord.
Acanthocottus octodecimspinosus, Mitchill.
 Two specimens from Gulf of S. Lawrence.
 (C) Sea Raven. L'Hémitriptère.
Hemitripterus americanus, Gmelin.
 A specimen from Atlantic Coast of Canada.
- 943 Wolf-fish. L'Anarrhique Loup.
Anarrhichas lupus, Linnaeus.
 A specimen from Gulf of St. Lawrence.
- 944 Burbot or Ling. La Lotte Commune.
Lota maculosa, Le Sueur.
 Four specimens from Rock Lake, Haliburton County, Ontario.
 From Mr. Andrew Fleck, of Parry Sound Railway.
- 945 Cusk. Le Brosme.
Brosmius brosme, Muller.
 Two specimens from Atlantic coast of Canada.
- 946 (A) Haddock. L'Eglefin.
Melanogrammus aeglefinus, Linnaeus.
 (B) White-hake or Codling. La Merluche Blanche.
Physis tenuis, Mitchell.
 Specimen of each from Halifax, Nova Scotia.

- 947 (A) 'Tom-cod or Frost-fish. La Petite Morue.
Mirrogadus tomcod, Walbaum.
 Four specimens from Halifax, Nova Scotia
- (B) Cod-fish. La Morue.
Gadus callarias, Linnaeus.
 A specimen from Gulf of St. Lawrence.
- 948 Cod-fish. La Morue.
Gadus callarias, Linnaeus.
 A specimen from Halifax, Nova Scotia.
- 949 Halibut. Le Flétan ou Halibut.
Hippoglossus hippoglossus, Linnaeus.
 Specimen from Gulf of St. Lawrence.
- 950 Rough Dab. La Limande.
Hippoglossoides platessoides, Fabricius.
 Two specimens from Gulf of St. Lawrence.
- 951 (A) Black Sole. La Sole Noir.
Lepidopsetta bitineata, Ayres.
- (B) California Flounder. Le Flet de Californie.
Platichthys stellatus, Pallas.
 A specimen of each from coast of British Columbia.
- American Lobster. Le Homard d'Amerique.
Homarus americanus, Edwards.
- 952 Male from Grand Manau, New Brunswick.
 Loaned by Mr. Henry Gatehouse, of Montreal.
- 953 Two specimens from Lagoon at Grand Entry, Magdalen Islands,
 Province of Quebec. (Collected by Commander Wakeham).
 A specimen from Gabarus, Cape Breton. (From Mr. H. E.
 Baker).
- 954 Specimen from Arichat, Cape Breton. (Through Commander
 Spain).
- Crabs. Les Crabes.
Chionocetes opilio, Kroyer.
- 955 Two specimens from mouth of Gaspé Bay, Province of Quebec.

Chionocetes opilio, Kroyer.

956 (A), (D) Two specimens from mouth of Gaspé Bay, Province of Quebec.

(B) *Cancer borealis*, Stimpson.

A specimen from Port Daniel, Bay Chaleur. "La Canadienne Dredgings, 1899."

(C) *Lithodes maia*, Latr.

A specimen from Westport, Nova Scotia.

957 *Chionocetes opilio*, Kroyer.

958 *Cancer magister*, Dana.

A specimen from Victoria, Vancouver Island.

MARINE INVERTEBRATES, SMALL FISHES, ETC.

ARRANGED IN CASES IN A SERIES OF TRAYS.

CASE A.

Tray 1.

Sponge. Eponge.

959 *Suberites compacta*, Verrill.

A specimen from Sable Island, Nova Scotia.

CCELENTERATES. ACALEPHES.

960 *Alyonium rubiforme*, Ehrenberg.

A number of specimens from Orphan Bank, Gulf of St. Lawrence. "La Canadienne" dredgings, 1899.

961 *Spiny Sea-feather. Pennatulc.*

Pennatula aculeata, Daniellsen

Two Specimens from Gulf of St. Lawrence.

POLYZOANS. BRYOZOAIRES.

Tray 2.

Myrizoum subgracile, d'Orbigny.

962 Fragments from Gulf of St. Lawrence.

963 Fragments from Nouvelle, Bay Chaleur. "La Canadienne dredgings, 1899."

964 *Flustra*, sp.

A specimen from Rimouski, Province of Quebec. "La Canadienne dredgings, 1899."

Tray 3.

965 *Cellepora corvicornis*.

Fragments from Orphan Bank, Gulf of St. Lawrence.

966 *Cellepora incrassata*.

A specimen from Orphan Bank, Gulf of St. Lawrence.

967 *Eschara elegantula*, d'Orbigny.

A specimen on a Pecten shell, and fragments from Orphan Bank, Gulf of St. Lawrence.

ASCIDIANS OR TUNICATES. TUNIGIERS.

968 *Cynthia pyriformis*, Rathke.

A specimen from Metis, Province of Quebec.

Peloniaia arenifera, Stimpson.

969 Two specimens from Richibucto, Straits of Northumberland.

970 *Boltenia clavata*.

A specimen from Metis, Province of Quebec.

BRACHIOPODS OR LAMP SHELLS. BRACHIOPODES

Tray 4.

971 *Terebratulina septentrionalis*, Gray.

A specimen from Bay of Fundy.

972 *Terebratella spitzbergensis*, Davidson.

A specimen and two valves, from Murray Bay, Province of Quebec.

Rhynchonella psittacea, Gmelin.

973 A specimen with barnacles attached. "Hudson Bay Expedition 1897."

974 Several specimens from Cape Gaspé Head. "La Canadienne - dredgings, 1899."

OPHIURIANS. OPHIURIDES.

Ophioglypha robusta, Lyman.

975 A number of specimens from Gulf of St. Lawrence.

Tray 5.

976 Two specimens from Rimouski, Province of Quebec. "La Canadienne dredgings, 1899."

Ophioglypha sarsii, Lyman.

977 A specimen, and two discs, from near Churchill. "Hudson Bay Expedition, 1897."

978 *Ophiocoma aculeata*, Muller.

A specimen from near Churchill. "Hudson Bay Expedition, 1897."

979 Three specimens from Cape Gaspé Head. "La Canadienne dredgings, 1899."

980 *Ophiocoma*, sp.

A specimen from near Churchill. "Hudson Bay Expedition, 1897."

STAR FISHES. ASTERIDES.

Tray 6.

Solaster endeca, Forbes.

981 A specimen from Murray Bay, Province of Quebec.

982 A specimen from Cape Gaspé Head, Province of Quebec. "La Canadienne dredgings, 1899."

983 *Solaster papposus*, Linnaeus.

A specimen from Hudson Strait. "Hudson Bay Expedition, 1897."

Tray 7.

Asterias vulgaris, Stimpson.

984 Three specimens from Douglastown Head, one being 4-rayed.

985 Eight specimens from Paspebiac, Bay Chaleur, six being very small.

Trays 8 and 9.

986 Five specimens from Pleasant Bay, Magdalen Islands. "La Canadienne dredgings, 1899."

Tray 10.

987 2 specimens from Gaspé, Province of

Tray 11.

Asterias polaris, Muller and Troschel.

988 A specimen from Cape Gaspé Head, Province of Quebec.

Tray 12.

989 Two specimens from Rimouski, Province of Quebec. "La Canadienne dredgings, 1899."

Tray 13.

990 A specimen from Ungava Bay, "Hudson Bay Expedition, 1897.

HOLOTHURIANS OR HOLOTHURIDES.

Sea Cucumbers.

Tray 14.

Psolus phantapus, Oken.

991 A very small specimen from Cape Gaspé Head. "La Canadienne dredgings, 1899."

Trays 14 and 15.

Psolus squamatus.

992 Four specimens from Rimouski, Province of Quebec. "La Canadienne Dredgings, 1899."

SEA URCHINS AND SAND DOLLARS. ECHINIDES.

Tray 16.

Echinarachnius parma, Lamarek.

993 A number of specimens, denuded of spines, from Gulf of St Lawrence.

CASE B.

Tray 17.

994 A number of specimens from Paspebiac, Bay Chaleur.

Trays 18, 19, 20, 21.

995 A number of specimens from Douglstown Head, Province of Quebec: four being denuded of spines.

Tray 22.

996 A number of specimens from Pleasant Bay, Magdalen Islands. "La Canadienne dredgings, 1899."

Tray 23.

Strongylocentrotus drobachiensis, Müller.

- 997 Specimens among algae, etc., from Bird Rocks, Magdalen Islands.

Tray 24.

- 998 Numerous specimens from Cape Gaspé Head.

Tray 25.

999. Five specimens from Rimouski, Province of Quebec.

Trays 26, 27, 28, 29.

- 1000 Thirteen specimens from Paspebiac, three being denuded of spines. "La Canadienne dredgings, 1899."

Tray 30.

- 1001 Six specimens, denuded of spines, from Bird Rocks, Magdalen Islands.

Tray 31.

- 1002 Three specimens from Ungava Bay, "Hudson Bay Expedition 1897." One denuded of spines.

Tray 32.

- 1003 A specimen denuded of spines, from Grand Manan, New Brunswick. From Lt.-Col. Gourdeau, Deputy Minister of Marine and Fisheries.

Loxechinus purpuratus, Stimpson.

- 1004 Two specimens from near Victoria, Vancouver Island, one denuded of spines.

CASE C.

LAMELLIBRANCHS. LAMELLIBRANCHES.

Trays 33, 34, 35, 36.

Hinnites giganteus, Gray.

- 1005 Two specimens (or four valves) from near Victoria, Vancouver Island.

Tray 37.

Pacific Oyster. Huitre de Pacific.

Ostrea lurida, Carpenter.

- 1006 A number of specimens from British Columbia.

Tray 38.

1007 American Oyster. Huitre de Virginie.

Ostrea virginiana borealis, Lamarek.

A specimen (or two valves) from Prince Edward Island.
From Mr. R. N. Venning, of Department of Marine and Fisheries.

Tray 39.

1008 *Pecten caurinus*, Gould.

A specimen (or two valves) with barnacles attached from Strait
of Georgia, British Columbia.

Tray 40.

Pecten Islandicus, Linnæus.

1009 Three specimens (or five valves) from Northern part of
Gulf of St. Lawrence.

Tray 41.

1010 Two specimens (or four valves) from Cape Gaspé Head, Gulf of
St. Lawrence.

Trays 42-43.

1011 Four specimens (or eight valves) from Mal Bay, Gulf of St.
Lawrence.

Tray 43.

1012 One very small specimen (or two valves) from Cape Gaspé Head,
Gulf of St. Lawrence.

"La Canadienne Dredgings, 1899."

1013 Two valves from Grand Manan, New Brunswick. From Lt.-Col.
Gourdeau, Deputy Minister of Marine and Fisheries.

Trays 44-45.

Pecten tenuicostatus, Mighels.

1014 One specimen (or two valves) from Gaspé Bay, Province of
Quebec.

Trays 46-47.

1015 One specimen (or two valves) from Douglstown Bank, Pro-
vince of Quebec, "La Canadienne dredgings, 1899."

CASE D.

Modiola plicatula, Lamarek.

Tray 48.

- 1016 A number of specimens from Charlottetown, Prince Edward Island. "La Canadienne dredgings, 1899."

Tray 49.

- 1017 One specimen (or two valves) from Pictou, Nova Scotia.

Modiola modiolus, Linnæus.

- 1018 Two specimens (or three valves) from Dougiastown Bank, Province of Quebec.

Tray 50.

- 1019 A few valves from Pictou, Nova Scotia. "La Canadienne dredgings, 1899."

Tray 51.

- 1020 One specimen (or two valves) from Nova Scotia.

Tray 52.

Mussel. Moule Comestible.

Mytilus edulis, Linnæus.

- 1021 One specimen (or two valves) from Metis, Province of Quebec.

- 1022 A few specimens from Charlottetown, Prince Edward Island. "La Canadienne dredgings, 1899."

- 1023 A valve with barnacles attached, from Ungava Bay, "Hudson Bay Expedition, 1897."

Tray 53.

- 1024 A few valves from Port Daniel, Bay Chaleur, "La Canadienne dredgings, 1899."

Tray 54.

Mytilus californianus, Conrad.

- 1025 Two specimens (or four valves) from Victoria, Vancouver Island.

Tray 55.

Modiolaria corrugata, Stimpson.

- 1026 Three valves from Cape Gaspé Head, Gulf of St. Lawrence. "La Canadienne dredgings," 1899."

Yoldia thraciaeformis.

- 1027 Two specimens from Gulf of St. Lawrence.

Cardium islandicum, Linnæus.

1028 A specimen from Nouvelle, Bay Chaleur.

1029 Three specimens from Cape Gaspé Head, Gulf of St. Lawrence.
"La Canadienne dredgings, 1899."

Tray 56.

Serripes groenlandicus, Gmelin.

1030 Specimen of valve from Metis, Province of Quebec.

1031 Specimen of valve from Paroquet, Gulf of St. Lawrence.

1032 Specimen of valve from Orphan Bank, Magdalen Islands. "La
Canadienne dredgings, 1899."*Cyprina islandica*, Linnæus.

1033 A specimen (or two valves) from Bay of Fundy.

Tray 57.

Astarte lactea, Broderip and Sowerby.

1034 A specimen (or two valves) "Hudson Bay Expedition, 1897."

1035 A few specimens from Orphan Bank, Magdalen Islands. "La
Canadienne dredgings, 1899."*Astarte banksii*, Leach.1036 Numerous specimens from Cape Gaspé Head, Gulf of St. Lawrence.
"La Canadienne dredgings, 1899."*Astarte elliptica*, Brown.1037 A few specimens from Orphan Bank, Magdalen Islands. "La
Canadienne dredgings, 1899."*Callista convexa*, Say.1038 A specimen (or two valves) from Pleasant Bay, Magdalen
Islands. "La Canadienne dredgings, 1899."

Tray 58.

Mercenaria violacea, Schumacher.

1039 Three specimens (or four valves) from Pictou, Nova Scotia.

Tray 59.

Macra ovalis, Gould.1040 Two specimens (or three valves) from Gaspé, Province of Que-
bec.

Tray 60.

Maetra solidissima, Dillwyn.

1041 Two specimens (or three valves) from Bay of Fundy.

1042 Two small specimens from Pictou, Nova Scotia. "La Canadienne dredgings, 1899."

Tray 61.

Ceronia jauressii, Joannis.

1043 A few specimens from Metis, Province of Quebec.

Macoma calcarea, Chemnitz.

1044 A few specimens from Orphan Bank, Magdalen Islands. "La Canadienne dredgings, 1899."

CASE E.

Tray 62.

Razor Shell. Solenide.

Ensatella americana, Gould.

Tray 63.

Siliqua costata, Say.

1045 Two specimens (or four valves) from Metis, Province of Quebec.

1046 Two specimens from Bay of Fundy.

Cyrtodaria siliqua, Spengler.

1047 Four valves from Gulf of St. Lawrence.

Tray 64.

Mya arenaria, Linnæus.

1048 Two specimens (or four valves) from Port Daniel, Bay Chaleur. "La Canadienne dredgings, 1899."

1049 Numerous tiny specimens from Murray Harbour, Prince Edward Island. Collected by Mr. Ernest Kemp.

Tray 65.

Saxicava rugosa, Lamarck.

1050 A few specimens from Ungava Bay, "Hudson Bay Expedition 1897."

Zirphaca crispata, Linnæus.

1051 Specimen of valve, from Sable Island, Nova Scotia.

Tray 65.

1052 Specimen (or two valves) from Victoria, Vancouver Island.

GASTROPODS. GASTROPODES.

Tray 66.

- 1053
- Chiton emersonii*
- , Couthouy.

A specimen from Riviere du Loup, Province of Quebec

- 1054
- Katherina tunicata*
- , Gray.

A specimen from Victoria, Vancouver Island.

- 1055
- Tonicella marmorea*
- , Fabricius.

Three specimens from Ungava Bay. "Hudson Bay Expedition, 1897."

- 1056
- Planorbis parvus*
- , Say.

One specimen from Ottawa, Ontario. (Fresh water).

- 1057
- Planorbis campanulatus*
- , Say.

A number of specimens from Ottawa, Ontario. (Fresh water).

Limpet. Patelle.

- 1058
- Acmaea testudinalis*
- , Müller.

Six specimens from Tadousac, Province of Quebec.

Tray 67.

- 1059 A number of specimens from Grand Manan, New Brunswick.
-
- From Lt.-Col. Gourdeau, Deputy Minister of Marine and Fisheries.

- 1060
- Haliotis Kamtschatkana*
- , Jonas.

Two specimens from Queen Charlotte Islands, British Columbia.

Tray 68.

Margarita cinerea, Couthouy.

- 1061 A few specimens from Ungava Bay, "Hudson Bay Expedition, 1897."

- 1062 A few specimens from Cape Gaspé Head. "La Canadienne dredgings, 1899."

- 1063
- Crepidula fornicata*
- , Lamarek.

A number of specimens from Pictou, Nova Scotia.

Tray 69.

- 1064
- Pachypoma gibberosum*
- , Chemnitz.

Two specimens from Victoria, Vancouver Island.

- 1065 *Lunatia lewisii*, Gould.
A specimen from Victoria, Vancouver Island.
- Lunatia heros*, Say.
1066 A specimen from Grand Manan, New Brunswick. From Lt.-Col. Gourdeau, Deputy Minister of Marine and Fisheries.
- Tray 70.
1067 Three specimens, and an operculum, from Picton, Nova Scotia.
- Tray 71.
1068 Three small specimens from Paspebiac, Bay Chaleur. "La Canadienne dredgings, 1899."
- Periwinkle. Littorine Littorale.
1069 *Littorina littorea*, Linnaeus.
Four Specimens from Grand Manan, New Brunswick. From Lt.-Col. Gourdeau, Deputy Minister of Marine and Fisheries.
- 1070 A few specimens from Georgetown, Prince Edward Island.
- 1071 A few specimens from Picton, Nova Scotia. "La Canadienne dredgings, 1899."
- 1072 *Littorina rudis*, Maton.
Numerous specimens from Picton, Nova Scotia. "La Canadienne dredgings, 1899."
- Tray 72.
Pelican's Foot. Pied de Pelican.
Aporrhais occidentalis, Beck.
1073 Four specimens from Ungava Bay. "Hudson Bay Expedition, 1897."
- 1074 A few specimens from Nouvelle, Bay Chaleur. "La Canadienne dredgings, 1899."
- Tray 73.
Dog Whelk. Pourpre a Teinture.
Purpura lipillus, Lamarck.
1075 A few specimens from Metis, Province of Quebec.
- 1076 Two specimens, with opercula, from Columbine Bank, Magdalen Islands. "La Canadienne dredgings, 1899."
- 1077 *Cerostoma foliatum*, Gmelin.
Two specimens from Queen Charlotte Islands, British Columbia.

Tray 74.

1078 *Tritia obsoleta*, Say.

Four specimens from Pictou, Nova Scotia. "La Canadienne dredgings, 1899."

1079 *Buccinum tenue*, Gray.

Two specimens from Metis, Province of Quebec.

1080 *Buccinum plectrum*, Stimpson.

Two specimens from Metis, Province of Quebec.

Whelk. Buccin Ondè.

1081 *Buccinum undatum*, Linnaeus.

Two specimens from Metis, Province of Quebec.

Tray 75.

1082 *Priene oregonensis*, Redfield.

A specimen from Victoria, British Columbia.

1083 *Sipho kroyeri*, Muller.

Three specimens from Metis, Province of Quebec.

1084 *Neptunea decemcostata*, Say.

Two specimens from Rimouski, Province of Quebec; one with hermit-crab.

"La Canadienne dredgings, 1899."

Tray 76.

1085 *Fusus decemcostatus*, Say.

One specimen from Grand Manan, New Brunswick. From Lt.-Col. Gourdeau, Deputy Minister of Marine and Fisheries.

1086 Spindle-shell.

Fusus islandicus, Gould.

One specimen from Grand Manan, New Brunswick. From Lt.-Col. Gourdeau, Deputy Minister of Marine and Fisheries.

1087 *Tropidona scalariforme*, Gould.

Four specimens from Metis, Province of Quebec.

CASE F.

CRUSTACEANS. LES CRUSTACEANS.

Trays 77, 78, 79.

1088 *Cancer borealis*, Stimpson.

Three specimens, and a few specimens of carapaces from Port Daniel, Bay Chaleur.

Trays 80 and 81.

Hyas aranea, Linnaeus.

- 1089 Numerous specimens of various sizes from Paroquet, Province of Quebec.

Tray 82.

- 1090 One small specimen from Orphan Bank, Magdalen Islands. "La Canadienne dredgings, 1899."

- 1091 Two specimens and carapace with barnacles attached. "Hudson Bay Expedition, 1897."

Trays 83, 84, 85.

Chionocaetes opillio, Kroyer.

- 1092 Five specimens from Orphan Bank, Magdalen Islands. "La Canadienne Dredgings, 1899."

Tray 86.

Panopeus, sp.

- 1093 Two specimens from Ucluelet, Vancouver Island.

Epiattus productus, Randall.

- 1094 Three specimens from Victoria, Vancouver Island.

Tray 87.

Hermit Crab,

Eupagurus bernhardus.

- 1095 Three specimens, two being in shells of Gastropods from Ungava Bay. "Hudson Bay Expedition, 1897."

Arcturus baffinii, Sabine.

- 1096 A specimen from near Churchill; "Hudson Bay Expedition 1897."

Salve Bug.

Aega psora, Kroyer.

- 1097 Three specimens from Churchill. "Hudson Bay Expedition, 1897."

1098. One specimen from Grand Manan, New Brunswick. From Lt.-Col. Gourdeau, Deputy Minister of Marine and Fisheries.

- 1099 Two specimens from Canadian Fishery Museum.

Tray 88.

Coronula diadema, Blainville.

- 1100 Five specimens from the back of a whale, being still attached to the skin.

Numerous specimens of Barnacles (*Balanus*) attached to shells of bivalve-mollusks and to stones.

Tray 89.

- 1101 Small specimens on valve of *Mactra solidissima*, from Pietou, Nova Scotia.
- 1102 Three specimens from a large stone from Pasbebiac, Bay Chaleur.
- 1103 Two elongated specimens, united, from Gulf of St. Lawrence.

Tray 90.

- 1104 A number of specimens on stones and on valve of *Mactra ovalis*, from Paroquet, Province of Quebec. "La Canadienne dredgings, 1899."

Tray 9i.

- 1105 A number of specimens from Alberni Canal, Vancouver Island.

Lepas fascicularis, Ellis and Solander.

- 1106 A few specimens on alga from the Pacific Coast.

FISHES.

Tray 91.

- 1107 Otoliths of God-fish.
Gadus callarias, Linnaeus.
Specimens from Port Daniel, Bay Chaleur.
- Otoliths of Fresh Water Drum.
Aplodinotus grunniens, Rafinesque.

- 1108 Two specimens from Detroit River, Ontario.

- 1109 Two specimens from Ottawa River.

Tray 92.

Aspidophoroides monopterygius, Bloch.

- 1110 Two specimens from the Gulf of St. Lawrence. "La Canadienne dredgings, 1899."

Acanthocottus octodecimspinosus, Mitchill.

- 1111 A specimen from Cape Egmont, Straits of Northumberland. "La Canadienne dredgings, 1899."

Zoarces anguillaris, Peck.

- 1112 A specimen from Gaspé Bay, Province of Quebec. "La Canadienne dredgings, 1899."

Hippocampus hudsonius, DeKay.

- 1113 A specimen from Atlantic Coast of Canada.

OYSTERS FROM PRINCE EDWARD ISLAND

Collected by Mr. Ernest Kemp, Canadian
Oyster Expert.

American Oyster. Huitre de Virginie.

Ostrea virginiana borealis, Lamarck.

CASE G.

Trays 93-96.

1114 A number of small specimens from Curtain Island, Richmond Bay.

Trays 97-98.

1115 Two specimens or four valves, from Migell River.

Tray 99.

1116 Five specimens from Orwell Bay.

Tray 100.

1117 One specimen, or two valves, from Pinette River.

Trays 101-103.

1118 Three specimens, or six valves, from Bedeque Bay.

Trays 104-107.

1119 Eight specimens from Bedeque Bay.

CASE H.

Trays 108-122.

1120 Eight specimens, or sixteen valves, from Bedeque Bay.

MISCELLANEOUS SPECIMENS.

Shells of Lamellibranch's, collected by Mr. Ernest
Kemp, Canadian Oyster Expert.

1121 American Oyster. Huitre de Virginie.

Ostrea virginiana borealis, Lamarck.

Specimens from Migell and Morell Rivers, Prince Edward Island

1122 Quahog or Hard Clam. Le Quahog.

Mercenaria violacea, Schumacher.

Specimens from Richmond Bay, Prince Edward Island.

- 1123 Soft Clam. Mye des Sables.
Mya arenaria, Linnaeus.
Specimens from Murray River, Prince Edward Island.
- 1124 Giant Clam or Sea Clam. Moule de Mer.
Macra solidissima, Chemnitz.
Specimens from Murray Harbour, Prince Edward Island.
- 1125 Mussel. Moule Comestible.
Mytilus edulis, Linnaeus.
Two specimens, or four valves, from Richmond Bay, Prince Edward Island.
-
- 1126 Specimens of Valves of *Pecten islandicus*, L., one valve with egg-capsules of *Buccinum undatum*, L., attached, from Anticosti Island, Province of Quebec.
- 1127 *Crytochiton stelleri*, Middendorf.
A specimen from Victoria, Vancouver Island.
- 1128 Basket-fish. L'Astrophyte.
Astrophyton agassizii, Stimpson.
A specimen from Gulf of St. Lawrence.
- 1129 Star-fish. L'Astérie.
Asterias polaris, Müller and Troschel.
A specimen from Nouvelle, Bay Chaleur.
A specimen from Mal Bay, Province of Quebec.
"La Canadienne dredgings, 1899."
A specimen from Gaspé.
- 1130 Sand-dollar. Echinarachnie Parma.
Echinarachnius parma, Lamarck.
A series of specimens from Douglstown Bank, Province of Quebec.
"La Canadienne dredgings, 1899."
- 1131 Sea-urchin. Toxopneuste.
Loxechinus purpuratus, Stimpson.
Two specimens from Victoria, British Columbia, one being denuded of spines.
- 1132 Sponge. Eponge.
Halichondria.
A specimen from Grand Manan, New Brunswick. From Lt.-Col. Gourdeau, Deputy Minister of Marine and Fisheries.

LAND
ian

Richmond

nest

Island

MODELS OF CANOES AND FISHING GEAR.

- 1133 Two models of Canoes, Ontario Canoe Co., Peterboro, Ontario.
- 1134 Two Indian Paddles,
- 1135 Model of Cedar Canoe,
- 1136 Model of Cedar Canoe, with 3 paddles, from British Columbia.
- 1137 Model of Scow from Yarmouth, Nova Scotia.
- 1138 Model of Ice-boat from Prince Edward Island.
- 1139 Ten Indian spears.
- 1140 Two shields with Fishing Gear.
-
- 924 **Henri Menier**, *No. 8, Rue Alfred de Vigny, Paris, France.*
- 1141 A Collection of Deep Sea Fishes from Anticosti Island, Province of Quebec.
- 925 **Luc Dupues**, *Les Aulnaies, Que.*
Fish Oil. Huile de Poisson.

rio.

.

ice

