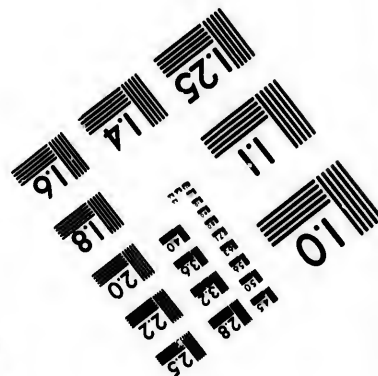
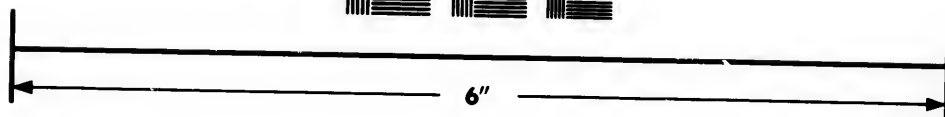
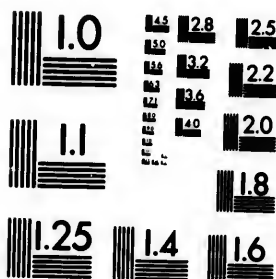


IMAGE EVALUATION TEST TARGET (MT-3)



Photographic
Sciences
Corporation

23 WEST MAIN STREET
WEBSTER, N.Y. 14580
(716) 872-4503

**CIHM/ICMH
Microfiche
Series.**

**CIHM/ICMH
Collection de
microfiches.**



Canadian Institute for Historical Microreproductions / Institut canadien de microreproductions historiques

© 1982

Technical and Bibliographic Notes/Notes techniques et bibliographiques

The Institute has attempted to obtain the best original copy available for filming. Features of this copy which may be bibliographically unique, which may alter any of the images in the reproduction, or which may significantly change the usual method of filming, are checked below.

- ☐ Coloured covers/
Couverture de couleur
- ☐ Covers damaged/
Couverture endommagée
- ☐ Covers restored and/or laminated/
Couverture restaurée et/ou pelliculée
- ☐ Cover title missing/
Le titre de couverture manque
- ☐ Coloured maps/
Cartes géographiques en couleur
- ☐ Coloured ink (i.e. other than blue or black)/
Encre de couleur (i.e. autre que bleue ou noire)
- ☐ Coloured plates and/or illustrations/
Planches et/ou illustrations en couleur
- ☐ Bound with other material/
Relié avec d'autres documents
- ☐ Tight binding may cause shadows or distortion
along interior margin/
La reliure serrée peut causer de l'ombre ou de la
distortion le long de la marge intérieure
- ☐ Blank leaves added during restoration may
appear within the text. Whenever possible, these
have been omitted from filming/
Il se peut que certaines pages blanches ajoutées
lors d'une restauration apparaissent dans le texte,
mais, lorsque cela était possible, ces pages n'ont
pas été filmées.
- ☐ Additional comments:/
Commentaires supplémentaires:

L'Institut a microfilmé le meilleur exemplaire qu'il lui a été possible de se procurer. Les détails de cet exemplaire qui sont peut-être uniques du point de vue bibliographique, qui peuvent modifier une image reproduite, ou qui peuvent exiger une modification dans la méthode normale de filmage sont indiqués ci-dessous.

- ☐ Coloured pages/
Pages de couleur
- ☐ Pages damaged/
Pages endommagées
- ☐ Pages restored and/or laminated/
Pages restaurées et/ou pelliculées
- ☒ Pages discoloured, stained or foxed/
Pages décolorées, tachetées ou piquées
- ☐ Pages detached/
Pages détachées
- ☒ Showthrough/
Transparence
- ☐ Quality of print varies/
Qualité inégale de l'impression
- ☐ Includes supplementary material/
Comprend du matériel supplémentaire
- ☐ Only edition available/
Seule édition disponible
- ☐ Pages wholly or partially obscured by errata
slips, tissues, etc., have been refilmed to
ensure the best possible image/
Les pages totalement ou partiellement
obscurcies par un feuillet d'errata, une pelure,
etc., ont été filmées à nouveau de façon à
obtenir la meilleure image possible.

This item is filmed at the reduction ratio checked below/
Ce document est filmé au taux de réduction indiqué ci-dessous.

10X	14X	18X	22X	26X	30X
<input type="checkbox"/>	<input type="checkbox"/>	<input type="checkbox"/>	<input type="checkbox"/>	<input type="checkbox"/>	<input type="checkbox"/>
<input type="checkbox"/>	<input checked="" type="checkbox"/>	<input type="checkbox"/>	<input type="checkbox"/>	<input type="checkbox"/>	<input type="checkbox"/>
12X	16X	20X	24X	28X	32X

The copy filmed here has been reproduced thanks to the generosity of:

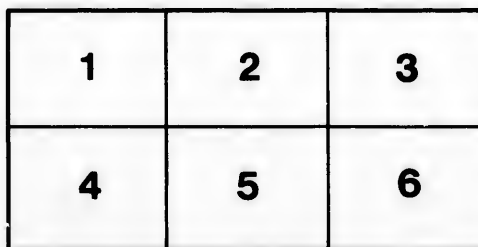
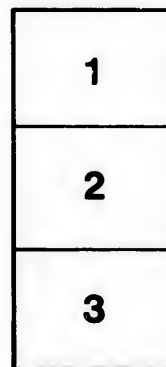
National Library of Canada

The images appearing here are the best quality possible considering the condition and legibility of the original copy and in keeping with the filming contract specifications.

Original copies in printed paper covers are filmed beginning with the front cover and ending on the last page with a printed or illustrated impression, or the back cover when appropriate. All other original copies are filmed beginning on the first page with a printed or illustrated impression, and ending on the last page with a printed or illustrated impression.

The last recorded frame on each microfiche shall contain the symbol ➡ (meaning "CONTINUED"), or the symbol ▼ (meaning "END"), whichever applies.

Maps, plates, charts, etc., may be filmed at different reduction ratios. Those too large to be entirely included in one exposure are filmed beginning in the upper left hand corner, left to right and top to bottom, as many frames as required. The following diagrams illustrate the method:



L'exemplaire filmé fut reproduit grâce à la générosité de:

Bibliothèque nationale du Canada

Les images suivantes ont été reproduites avec le plus grand soin, compte tenu de la condition et de la netteté de l'exemplaire filmé, et en conformité avec les conditions du contrat de filmage.

Les exemplaires originaux dont la couverture en papier est imprimée sont filmés en commençant par le premier plat et en terminant soit par la dernière page qui comporte une empreinte d'impression ou d'illustration, soit par le second plat, selon le cas. Tous les autres exemplaires originaux sont filmés en commençant par la première page qui comporte une empreinte d'impression ou d'illustration et en terminant par la dernière page qui comporte une telle empreinte.

Un des symboles suivants apparaîtra sur la dernière image de chaque microfiche, selon le cas: le symbole ➡ signifie "A SUIVRE". le symbole ▼ signifie "FIN".

Les cartes, planches, tableaux, etc., peuvent être filmés à des taux de réduction différents. Lorsque le document est trop grand pour être reproduit en un seul cliché, il est filmé à partir de l'angle supérieur gauche, de gauche à droite, et de haut en bas, en prenant le nombre d'images nécessaire. Les diagrammes suivants illustrent la méthode.

errata
to

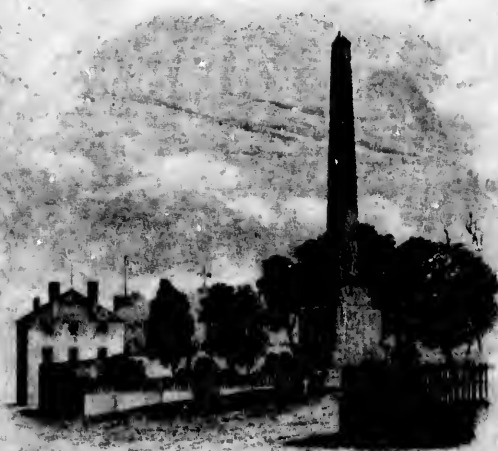
pelure,
on à



Drawn & Engraved by James Sadler Junr.

QUEBEC

PICTURE
OF QUEBEC.



VITA DIGNA SEMPER PERPETUA.

QUEBEC. MDCCCXXIX

M. H. David

P

THE

PICTURE OF QUEBEC.

**Printed by Robert Armour,
Montreal.**

THE
PICTURE
OF
QUEBEC.

Laudabunt alii, claram Rhodon—
Aut Epheson ; bimarise Corinthi
Moenia—
Sunt quibus unum opus est,—Palladis urbem
Carminis perpetuo celebrare—
Me nec tam—

QUEBEC:
PUBLISHED BY D. AND J. SMILLIE.
1829.

51215

1990

TO
HIS EXCELLENCY
SIR JAMES KEMPT, G. C. B.
ADMINISTRATOR
OF THE
GOVERNMENT, &c. &c. &c.
THE
PICTURE OF QUEBEC
IS

MOST RESPECTFULLY

INSCRIBED BY

HIS EXCELLENCY'S

FAITHFUL SERVANT,

GEORGE BOURNE.

QUEBEC,
June 13, 1829. }

THE
OFFICE OF THE
TREASURER

OF THE
UNITED STATES

DEPARTMENT OF THE
TREASURY

WASHINGTON, D. C.

OFFICE OF THE
COMPTROLLER

OF THE
TREASURY

WASHINGTON, D. C.

OFFICE OF THE
ASSISTANT

COMPTROLLER

OF THE
TREASURY

WASHINGTON, D. C.

OFFICE OF THE
ASSISTANT

COMPTROLLER

WASHINGTON, D. C.

T
N
pl
in
F

t
o

NOTICE.

THIS volume is intended to supply a desideratum in the Northern Tourists' Library. Long has it been a just complaint, that unexpected difficulties are realized by strangers in exploring the curiosities of the far-famed Canadian Fortress, and its vicinity.

The requisite information is now furnished in reference to every novel object, which the varied pursuits and tastes of Travellers include in their research.

QUEBEC, June 13, 1829.

NOTICE

That I have a number of copies of the
following books for sale at a low price
and will sell them at a low price
if you will call on me at my residence
at 100 North 1st Street, St. Louis, Mo.

The following books are for sale at a low price
if you will call on me at my residence
at 100 North 1st Street, St. Louis, Mo.

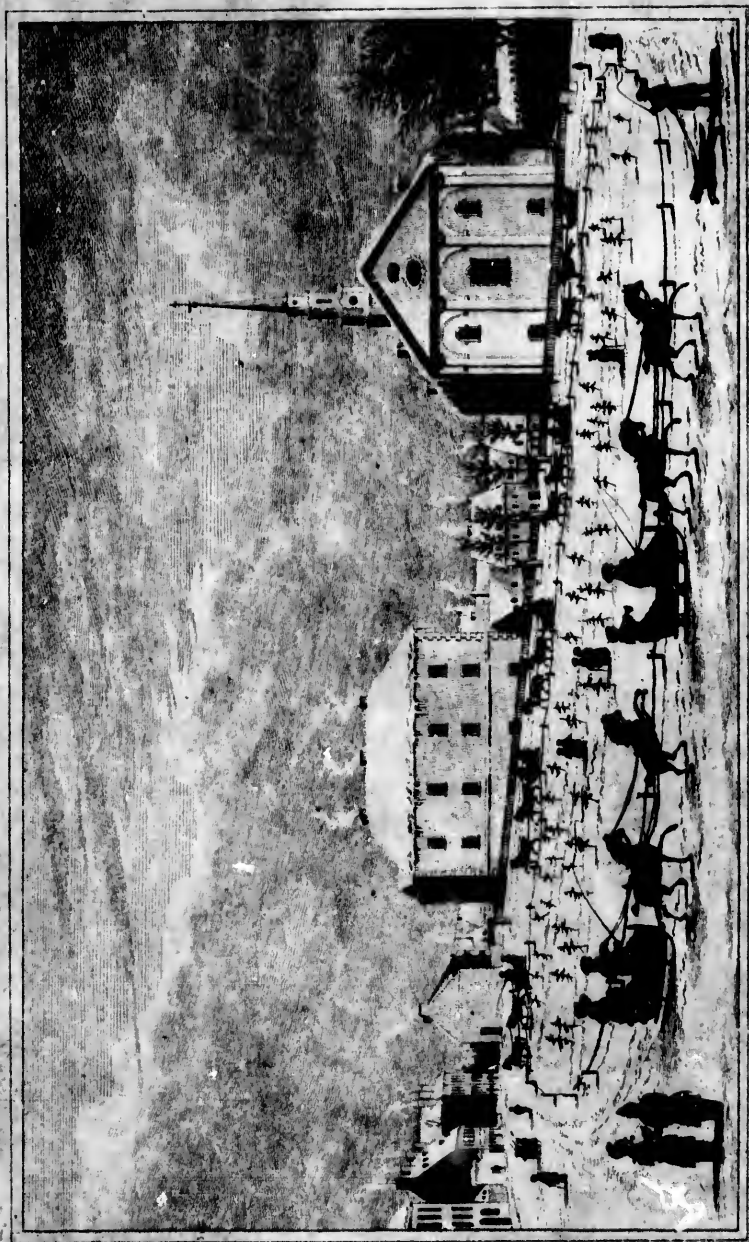
Yours truly,
J. H. Smith

THE ENGRAVINGS.

1. Vignette Title Page.
2. Quebec from Point Levi,
3. Quebec Driving Club.
4. Castle of St. Lewis.
5. Parliament House.
6. Catholic Church.
7. Episcopal Church.
8. Presbyterian Church.
9. Trinity Chapel.
10. St. John's Chapel.
11. Methodist Chapel.
12. St. Roch's Church.
13. Court House.
14. General Hospital.
15. New Exchange.
16. Episcopal Church, Point Levi.
17. Map of Quebec.

THE MARCH 1919

1. The March 1919
2. The March 1919
3. The March 1919
4. The March 1919
5. The March 1919
6. The March 1919
7. The March 1919
8. The March 1919
9. The March 1919
10. The March 1919
11. The March 1919
12. The March 1919
13. The March 1919
14. The March 1919
15. The March 1919
16. The March 1919
17. The March 1919
18. The March 1919
19. The March 1919
20. The March 1919



THE DRIVING CLUB.

PICTURE OF QUEBEC.

THE ENGRAVINGS.

I. THE VIGNETTE.

THE Vignette contains an accurate delineation of a Picturesque Scene. Standing close to the wall of the Governor's Garden, opposite to Mount Carmel street, the grand object before the observer is the Monument to Wolfe and Montcalm—on the left is the residence of the Protestant Bishop—and above it, the north-east angle of the Citadel; with the Flag Staff and Telegraphic Nautical Communicator—whence proceeding westerly, all the objects of vision are successively depicted.

II. QUEBEC.

VISITORS who are anxious to behold Quebec in its most impressive display, and especially in reference to its castellated exterior, should not omit the survey from Point Levi. In almost every other position the view is partial; or the distance renders the scene comparatively indistinct—but the elevation of the summit on the eastern

bank of the river above the Churches, combined with its propinquity, for the interval is scarcely one mile, gives to all the prominent objects their proportionate perspicuity.

On the left, the St. Lawrence may be traced for some length towards the south-west ; with the opposite shores and shipping Coves, which are the chief depositories of the immense masses of timber that are floated down the river for exportation. The Plains of Abraham, where the decisive battle was fought between the English and French armies, and in which both the Generals, Wolfe and Montcalm, closed their military career, defended by the Martello Towers, are next discernible—and the verdure on the top is beautifully contrasted with the wild, rugged and barren exterior of the precipitous descent.—Underneath, the Wharves, Stores and Habitations assume the appearance of regularity—until, at Diamond Cove the eye meets two circuitous foot-paths like ladders ascending the hill. Near this point the docks exhibit the ships in continuous succession to the north-east extremity of the Lower Town. A distinguished object in the upper part of this view is the Railway extending from the acme of the Cape to the wharf. To the observer on the river, or on the eastern shore, the opposite movements of the carts as they pass up and down, gives a peculiar liveliness to the scene.

On the top of the hill, near the machinery, appears the unfinished parapet of the Citadel, proceeding on the brow of the Cape northerly to the Flag Staff—whence the descent is abrupt, to the wall which surrounds the Governor's Garden, extending to the Castle of St. Lewis.

To the right of which, are seen in order, the steeples of the Episcopal and Catholic Churches, and of the Seminary—and in immediate front adjoining the wall considerably below the Chateau, is the Parliament House—whence the wall of the city is prolonged without interruption, being the site of the Grand Battery; which gradually diminishes in height to the Artillery Barracks on the west, where the fortifications towards the river St. Charles on the north-west terminate.

This military display becomes more imposing from its contrasts. The base of the stone parapet towers upon the summit of the high rocky projection, which is nearly perpendicular and bare; except where a few low pines and coarse shrubs bespeak the sterility of the decomposed stones among which they have germinated. Of a dark embrowned hue, the rock exhibits enormous masses of concrete strata, which, to the distant observer, seem ready every moment to be precipitated upon the thoughtless insecure citizens beneath, over whose habitations they appear to be suspended in the air.

The dreariness of this rugged portion of the landscape is instantly relieved, as the eye glances along the river. Of the buildings in immediate front below, none peculiarly arrest attention except the King's Warehouse, and the steeple of the Lower Town Church. A very prominent and interesting ornamental addition of permanent character will however be directed to the view, when the New Exchange at the extremity of the north-east point shall have been finished. Thence the observer explores partially the course of the suburbs, with all the environs of the city to the west and north, as circum-

scribed by the hills above Lorette, Charlebourg, Beauport, and the falls of Montmorenci, and from the heights, also the prospect towards the east and south.

Travellers generally are in too much haste to be fully repaid for their journey ; and many of them do not enjoy this scene, of which, it has been remarked, this continent affords no parallel. Those strangers who visit Quebec to gratify curiosity, or to enlarge the boundaries of science, are reminded that the City and its vicinity combine many novel desirable objects of research ; for which, in all ordinary cases, the detention of a day must be totally unimportant.

III. QUEBEC DRIVING CLUB.

THERE is a characteristic view of the Place d'Armes in the winter, and of the citizens in their exterior appearance. A number of gentlemen, some years since, formed an association to exhibit the Canadian Cariole in superior style. They usually held a weekly meeting for their display, and paraded in the Place d'Armes before the Castle Yard. The middle and larger part of the area is surrounded with a chain fence, affording the usual width of a carriage track between the foot walks and the inclosure.

For safety it is essential that the level ground should be definitely marked, that neither foot travellers nor horses and carioles, should be unexpectedly buried amid the beds of deep snow. Hence, branches of Evergreens are fixed at very short distances, so as to be perceptible in the darkest nights, to limit the traveller's course, that he

may not be ingulphed in the drifts on the sides of the road. The Place d'Armes is therefore represented as filled with these beacons, to direct the transverse foot paths within the chains, and the routes for carioles without the fence.

The view was taken by Mr. Wallace from the Guard House of the Castle, at the precise time when the Driving Club were waiting for the Governor to appear and head the train. In front, on the right, the conspicuous primary object of notice is a genuine Canadian curiosity—a boy on a low sled drawn with great vivacity and moderate speed by a dog trained to the harness. The Ladies and Gentlemen in the Carioles are depicted in their usual habiliments—Fur Caps, Overall Coats or Cloaks and Shawls, Muffs and Fur Gloves, prepared to defy equally the snow storm from the east, or the freezer from the west.

The trees are at the north corner of the yard, surrounding the Episcopal Church, the east front of which is exhibited. Towards the south, next stands the east wing of the Court House, and on the extreme left the end of St. Louis street. Between the Episcopal Church and the Court House in the rear, appears part of Garden street adjoining the Ursuline Nunnery.

The whole scene is a graphically correct representation of that part of the city; and also of the Quebec Driving Club during January and February, in their wintry vehicles and costume.

Colonel Bouchette thus lucidly delineates the river scenery from December to April. "In almost any

weather the Habitans will cross the St. Lawrence in their large and strong canoes, which are managed with great dexterity, and sometimes carry eight passengers besides the men who work them. When large masses of ice are floating with the tide, and a strong breeze, the passage is laborious, and apparently hazardous, yet seldom has a fatal accident happened. They are frequently driven leagues out of their course, in heavy snow storms, ignorant of their situation, but they generally arrive at their destined place. The boatmen are provided with strong ropes, and poles hooked with iron for grappling the ice. When a large sheet of ice opposes their progress, by means of the poles and ropes, the men hoist the canoe upon it, and drag it, with the cargo which is firmly secured, until they find a convenient opening to launch it; and then with their paddles they proceed until they are intercepted by another flat, upon which it is again hoisted, and thus they continue their toilsome alternations until they reach the shore. Often while forcing their canoe over a field of ice, it breaks beneath them—and in pursuing their course through a narrow channel of water between two masses, the ice frequently unites; but at the moment when a stranger would imagine the canoe must be shivered to atoms in the collision, by means of their poles, the men skilfully contrive to make the pressure of the ice so act upon the keel, as to heave it upon the surface. In this laborious employment they are amazingly steady, from habit, unapprehensive of danger, and almost insensible to the intense severity of the winter's cold; for their clothing although warm is peculiarly light for the season."

F
wint
mat
nel
is a
com
of O

Formerly, the St. Lawrence was frozen over every winter, now several seasons intervene between the formation of the glacial bridge or *pont*. The southern channel below the bay is never closed, but the north branch is annually congealed; which admits a direct carriage communication during about ten weeks from the island of Orleans to Quebec.

TOPOGRAPHY

OF THE RIVER FROM

MONTREAL TO QUEBEC.

THE shores of the St. Lawrence from the Bay above Montreal to a considerable distance east of Quebec swarm with people—for a large majority of the inhabitants of Lower Canada reside adjacent to each other, and within a short distance of the banks of the stream. Few interruptions of uncleared woodland intervene throughout the whole journey from Montreal to Quebec, so that the habitations on both sides of the river form almost one protracted street; with groupes of houses varying in number, around, or in the vicinity of the Churches, which are generally erected within sight of the floating passengers, except on Lake St. Peter. They are from six to nine miles distant from each other, and many of them are prominent objects to enliven and embellish the otherwise attractive, and to a stranger, novel scenery.

MONTREAL at present is the largest and most populous City of Canada, and more real mercantile business is transacted in it, than in the sea-port. Its exterior aspect is also more modernized; and although to a traveller

who
quat
coml
publ
meri
gran
plete
of N
visite
inspe
in th
persp
impos
sumn
yards
is app
organ
cent
comm
Vi
procu
Histo
tifica
and e
In
tive
right
the c
in th

who is anxious to view either natural curiosities or antiquated memorials, it does not equal Quebec, yet it combines various objects worthy of notice. Some of the public buildings are beautiful—the monument to Nelson merits accurate survey—the new Catholic Church in grandeur, capaciousness, style and decoration, when completed, will surpass most of the edifices on the continent of North America—and the Nunneries which may be visited by an application to the resident Bishop also claim inspection. From the opposite shore of the river, and in the Steam-boat descending from La Prairie, the perspective view of the city is highly agreeable and imposing—and a delicious landscape is beheld from the summit of the western Mount, which is two hundred yards above the river. Hence the prospect to the south is apparently circumscribed only by the feebleness of the organs, which preclude the distinct vision of the magnificent and verdant champaign, as its display recedes, and commingles with the distant horizon.

Visitors of taste and science are especially requested to procure an introduction into the Museum of the Natural History Society of Montreal—they will realize high gratification from the numerous assemblage of indigenous and exotic specimens which it includes.

In journeying from Montreal to Quebec, the inquisitive observer by day-light may behold, on the south, or right bank of the St. Lawrence, the large majority of the churches and settlements, in their order, as specified in the ensuing catalogue.

QUEBEC.

		MILES.	
	North-east.....	180	Point Levi.
			St. Nicholas.
			St. Antoine.
			St. Croix.
			Lotbiniere.
			Deschaillons.
			St. Pierre les Becquets.
		100	Gentilly.
Invisible			Becancour.
"		90	St. Gregoire.
	to.....		Nicolet.
Invisible.			Lefebvre—or Baie St. Antoine.
"			St. Francis.
"			Yamaska.
		45	Sorel.
			Contrecour.
			Vercheres.
		15	Varenes.
			Boucherville.
			Longueuil—opposite.
	South-west.....	9	La Prairie—south.

MONTREAL.

1.
Mont
north
town
and b
A sma
in a r
2.
3.
a villa
4.
are di
this c
5.
6.
7.
with
Gover
Riche
Cham
The
numb
testan
Stean
8.
this d
9.
inhab
10.
villag
Tr
churo

1. **LA PRAIRIE** is the grand thoroughfare between Montreal and St. John's, and the landing place for the northern trade of Lake Champlain. It is a thriving town of more than 200 houses, to the south of Montreal, and besides the Catholic Church, contains a Nunnery.—A small Protestant Congregation also assemble at present in a room fitted up for public worship in a private house.

2. **LONGUEUIL** is nearly opposite to Montreal.

3. **BOUCHERVILLE**.—This Church is surrounded with a village containing more than 100 houses.

4. **VARENNES**.—On account of its three spires, which are distinctly seen at Montreal, a distance of 15 miles, this church is a conspicuous object on the river.

5. **VERCHERES**.—A few houses encircle this edifice.

6. **CONTRECOUR**.

7. **SOREL**.—This town comprises about 200 houses, with barracks, stores and other buildings occupied by the Government, and is situated at the junction of the River Richelieu, by which the superfluous waters of Lake Champlain are discharged, and the St. Lawrence.—The streets intersect each other at right angles, and it numbers nearly 2000 inhabitants. In Sorel are a Protestant and a Catholic Church—and there, some of the Steam-boats always call for passengers and merchandize.

8. **YAMASKA**.—There is also a Protestant Church in this district.

9. **ST. FRANCIS**.—This is the site of about 40 cabins, inhabited chiefly by Abenaki Indians.

10. **BAIE ST. ANTOINE**, or *Lefebvre*.—A neat little village.

Travellers in the Steam-boats do not perceive the churches of the three Seigniories last enumerated. The

first is obscured by the intervening islands, and the others are not discernible on account of their distance in the interior, from the shore of Lake St. Peter.

11. NICOLET.—This village is in a beautiful location, with a populous seigniory. Adjoining it is a College, with seven Tutors, besides the President. On account of its remoteness from the course of the Steam-boats, and the intervention of some woodlands on the margin of the Lake, passengers only have an occasional glimpse of the Church and its vicinity.

12. ST. GREGOIRE.—This Church has a small cluster of houses adjoining it.

13. BECANCOUR.—Near the Church are a few cottages; and at a short distance from it, some Indian families of the Abenaki tribe have fixed their residence.

This land is almost opposite to Three Rivers, but the Church is imperceptible to Steam-boat travellers—that of St. Gregoire is also not discernible.

14. GENTILLY.—Here the southern shore, which through all the previous route is low and occasionally swampy, precipitously rises to a considerable height.

15. ST. PIERRE LES BECQUETS is situated immediately upon the bank of the river.

16. DESCHAILLONS.—This Church stands a short distance above Cap a la Roche.

17. LOTBINIERE.—A few comfortable houses surround this edifice.

18. ST. CROIX.—This Seigniory appertains to the Ursuline Nuns of Quebec.

19. ST. ANTOINE.

20. ST. NICHOLAS.

Th
arrive
six n
prosp
built,
gem
mingl
he be
these
sently
Wolf
being
made
On t
contra
Diam
opposi
uncov
below
21.
site sh
of Qu
projec
the ne
mandi
the c
object
lovelin
embel
the e
Christ

The traveller, as he descends the St. Lawrence, when arrived at the mouth of the Chaudiere, perceives at about six miles distance a high cliff nearly intercepting the prospect—this is the promontory on which Quebec is built, and it is denominated Cape Diamond, from the gem-like quality of the crystals which are found intermingled with the granite beneath its surface. Speedily he beholds a range of hills skirting the northern horizon, these are beyond the falls of Montmorenci—and presently embosomed in a harbor of masts, he is pointed to *Wolfe's Cove* on the left—thus distinguished from its being the rock by which that General and his troops made their memorable ascent to the Plains of Abraham. On the right, Point Levi with its verdant scenery as contrasted with the brown and naked barrenness of Cape Diamond interests the observer, who, upon his arrival opposite l'Ance des Meres, enjoys the view of the uncovered heights frowning upon the wharves and vessels below, until he debarks.

21. POINT LEVI.—This village, although on the opposite shore of the river, may be considered almost a suburb of Quebec. The Catholic Church stands exactly at the projection of land where the St Lawrence turns short to the north-east. The Episcopal Church, from its commanding position and attractive neatness, combined with the circumjacent landscape, constitutes an agreeable object of survey to all persons, who unite a taste for the loveliness of nature's display, in combination with the embellishments of art, especially when recommended by the exterior appearance, and sanctified associations of Christian devotion.

All Travellers sleep one night at least on board the Steam-boat while journeying between the two cities—they should arrange to alter the hours, that on their return, they may view by day that part of the river which had been passed before by night. The Steam-boats invariably leave Quebec near the time of low water—that they may pass through the Richelieu Rapid about 50 miles above the port, with the stream at the tide of flood, and during the travelling season, if desirable, the chief part of the river may generally be viewed either sailing downwards or on the ascent.

By tracing the location of the Churches, the traveller on his retrogression from Quebec to Montreal, will discern that they are generally erected in nearly a straight line on both banks of the river, and on the north or right hand of the St. Lawrence—those in the following catalogue, stand in the order designated.

MONTREAL.

	MILES.	
Invisible. "	171	Long Point. Point aux Trembles. Repentigny. St. Sulpice. Lavaltrie. Lanoraye. Isle du Pas.
	156	Berthier. Maskinongé. Riviere du Loup. Machiche. Point du Lac.
	135	Three Rivers. Cap de la Magdeleine. Champlain.
	90	Batiscan.
	75	St. Anne. Grondines.
	60	Deschambault.
	45	Cap Santé.
	30	Les Ecureuils, or Belair
	21	Point aux Trembles. St. Augustin.

QUEBEC.

1. **ST. AUGUSTIN.**—This Church is built upon a point which projects into the River. The whole Seigniorship is in the possession of the Nuns, who occupy the General Hospital of Quebec.

2. **POINTE AUX TREMBLES.**—This is a small village of about 30 houses skirting the river, with an establishment for elementary education, conducted by two Nuns from the city.

3. **LES ECUREUILS, or Belair.**

To Travellers by land the scenery near the bridge of the Jacques Cartier River, at the mouth of which, the navigator of that name wintered in 1536, is highly interesting and romantic. "The general view along the course of the river," says Col. Bouchette in his Topographical Description of Canada, "is varied, picturesque and extraordinary, presenting a thousand combinations of grandeur, beauty and wild magnificence. At the bridge the stream is precipitated, with great velocity, over many large fragments of granite in a perpendicular fall of considerable height, with an incessant roar of the torrent forcing itself through the hollows and excavations of its rocky bed." It flows with almost similar impetuosity through its whole subsequent course, until its waters mingle with the St. Lawrence. To this accurate delineation, it may be subjoined, that many of the more majestic features of the scene are presented in an additionally impressive aspect in mid-winter, when the severity of the congelation exhibits the banks and the bed of the stream in every variety of fantastic appearance, and its frozen artificial pendants in all diversity of figure, and size, resemble the stalactites of the richest natural grottos.

4. Church
being
cuou
5. long
prese
for
strea
lope
para
6.
7. from
and
the b
8.
9.
10.
11. second
midw
tains
with
Episc
Hous
Gove
Conv
estab
apar
It is

4. **CAP SANTE.**—This is a neat little village, and the Church with its three spires, from its elevated position, being discernible at a great distance, forms a very perspicuous object, when sailing down the river.

5. **DESCHAMBAULT.**—This Church is erected on a long point which extends to the Richelieu Rapids, and presents a very bold aspect to the observer. The views for many miles above and below the meander of the stream between this Church and that of Cap Santé, develop an enchanting intermixture of landscape scarcely paralleled throughout the whole journey.

6. **GRONDINES.**

7. **ST. ANNE.**—This village stands at some distance from the channel of the river—it contains a neat Church and about 40 dwelling-houses; but the main road and the banks of the river are also densely peopled.

8. **BATISCAN.**

9. **CHAMPLAIN.**

10. **CAP DE LA MAGDELEINE.**

11. **THREE RIVERS.**—In point of antiquity, this is the second settlement in the Province, and situated nearly midway between Quebec and Montreal. The town contains about 400 houses and nearly 3000 inhabitants, with the following public edifices. A Catholic, and an Episcopal Church—a Methodist Chapel—the Court House—the Jail—the Barracks, formally occupied by the Governor during the French regime—and an Ursuline Convent, for the residence of twenty-five Nuns. This establishment includes a Chapel, Hospital and every apartment convenient for the comfort of its occupants. It is a modern capacious building, and surrounded by a

beautiful garden. Eight miles from Three Rivers to the north-west is the Foundry of St. Maurice ; an extensive factory of stoves, kettles, and iron implements of every species, highly beneficial to the Province, for the certainty with which the wants of the *Habitans* in those indispensable articles are supplied. The situation itself is attractive, from the characteristic scenery with which it is enveloped. Travellers might easily arrange to visit this establishment ; often without sacrifice of time ; and they would not regret the excursion.

12. POINT DU LAC.—This terminates the Lake of St. Peter on the north-east. Within a short distance the Church is surrounded by a number of dwellings, and a large Mill, with its necessary store-houses, forming a small scattered hamlet.

13. MACHICHE.—This is a compact little village.

14. RIVIERE DU LOUP.—The Church at this station is noticed for its spaciousness, its superior style of architecture, and the costliness of its internal ornaments. It displays three steeples, and although not more than 50 habitations are immediately circunijacent, yet the main route between the two cities for a considerable distance is so closely lined with houses, that it approximates to a continued street. A small Protestant Church is also in this vicinity.

15. MASKINONGE.

The three Seigniories last designated are at some distance inland from the margin of the Lake St. Peter—and this, combined with the necessity which the Steam-boats are under to keep in the main channel, renders the Churches imperceptible to Steam-boat travellers.

16
chan
hous
inter
seen
of th
also
sacti
from
17
narro
shore
is see
18
almos
banks
route
19
20
dwell
duce
are h
21
22
of ab
23
Aft
trealt
after
granc
comp

16. **BERTHIER** is a small town situated on the north channel of the St. Lawrence, comprising about 100 houses. The Church is a neat edifice in the exterior, and internally of superior elegance ; but it is only indistinctly seen when persons sail by Sorel down the southern branch of the river. Some of the boats pass by this place, and also stop for the convenience of passengers and the transaction of business. It stands on nearly a straight line from Sorel, and is the same distance from Montreal.

17. **ISLE DU PAS**.—This Church is erected on a long narrow island, which is nearly parallel to the northern shore of the river, between Berthier and Sorel, and is seen at some distance above those towns.

18. **LANORAYE**.—The houses from this Seigniory form almost an uninterrupted street, adjoining the road on the banks of the St. Lawrence, through the whole remaining route to Montreal.

19. **LAVALTRIE**.

20 **ST. SULPICE**.—This village includes about 100 dwelling-houses, besides numerous stores, for the produce of the country ; considerable quantities of which are here deposited.

21. **REPENTIGNY**.

22. **POINTE AUX TREMBLES**.—This is a small village of about sixty houses.

23. **LONG POINT**.

After passing *Varennas*, the sail up the river to Montreal, especially in the freshness of early morning, or after the heat of the sun has passed away for the fragrance and repose of a summer's eve, is delightful. The comparative slowness with which the boat moves against

the rapid current, enables the explorer to discern the multifarious picture in all its distinctness and beauty. On the Mount behind the city, the commingled exhibition of nature's dignified and rich display, clothed in all its verdant and unbroken foliage, contrasted with the exuberant appearance of the fields and gardens, and the numerous habitations of man—with the projecting beauty of the variegated woody island in the front, and the spires and edifices of the city on the right, presents a landscape deeply attractive and permanently remembered. The effect is not diminished by the sudden change that occurs, when the large bay is expanded to view, and the tin spire of La Prairie, glittering in the sun's rays, gives to the distant shore a feature of momentary enchantment.

NOTICE.

STRANGERS who desire to obtain minute information respecting the Civil, Military, and Ecclesiastical state of the Canadas, or of the other British Provinces in North America, are recommended to procure the *Montreal Almanac and Register* ; or the *Quebec Almanac and Calendar*.

FOR
Euro
quate
tinne
rior g
Habi
conti
excit
realiz
Qu
land,
St. C
beaut
Fr
extre
city
to a b
pital
of the
the v
side
Mart
or 23

QUEBEC.

FOR a stranger, and especially if he has never visited Europe, Quebec comprises multiplied novelty. The antiquated style of its stony appearance, the high and sharp tinned roofs of the houses, the glittering spires, the exterior garb, distinctive features and foreign language of the Habitans, the dog carts, and the military apparatus which continually pass before him, produce a temporary mental excitement which to be correctly understood must be realized.

Quebec is situated upon a high peninsular point of land, at the confluence of the Rivers St. Lawrence and St. Charles, the junction of which forms a capacious and beautiful bay and harbour. (1)

From the New Exchange now erecting at the very extremity of the point on the north-east, the limits of the city jurisdiction extend in a direct line about north-west to a bend in the St. Charles River, near the General Hospital. On the St. Lawrence River the south-west point of the Banlieu is about equi-distant from the Exchange—the whole plat approximating to a triangle—the longest side of which passes a short distance to the west of the Martello Towers, measuring one mile and five furlongs or 2360 yards from the St. Charles to the St. Lawrence,

A straight line drawn from one river to the other, at the Barrier on the south and west is rather more than a mile in length—and the whole wall is two miles and three quarters in circuit—but including the Citadel, the Esplanade, the different large gardens, and other vacant spaces, a considerable proportion of the interior area within the fortification remains unoccupied for buildings.

The city and environs are thus subdivided. That part which is within the walls is called the Upper Town, and can be approached solely by five gates. On the eastern side of the Cape towards the St. Lawrence, there is only one avenue to enter it, by a circuitous steep hill, through Prescott Gate; which is the chief thoroughfare for all the commercial business of the port, especially during the navigable season, and then Mountain street, as this route is named, presents the appearance of a crowded and active population. On the north of the city, and where the promontory has considerably declined in height, there are two entrances—Hope Gate, not far from the eastern extremity of the rampart—and Palace Gate adjoining the Armoury and the Artillery Barracks. These gates are on that side of the city which is washed by the St. Charles. From the land there are two avenues to the interior of the fortifications—that to the east is known as the St. Louis Gate, which conducts by a beautiful road to the Plains of Abraham—the other is at the end of St. John street, and thence denominated St. John's Gate—this is the route through which the chief part of the country trade passes.

The long street from the termination of the Banlieu on the south-west, upon the St. Lawrence, skirting the Cape round to the Wood Yard belonging to the Govern-

ment,
and a
river
portion
Louis
Banlieu
John
turning
included
extending
hill to
on the
appell

A r
as it p
as bou

The
jected
of Can
timber
comm
the m
port.
contra
would
the lu
new l
condu
course
dock
to the

ment, including Mountain street to the Prescott Gate, and all the other shorter streets between the hill and the river are generally denominated the Lower Town. The portion between the road outside of the Gates of St. Louis and that of St. John street, to the line of the Banlieu, is called the suburbs of St. Louis. From St. John street northerly to the Cote St. Geneviève, and returning to the end of the Banlieu, all the buildings are included in the St. John suburbs—and the large district extending from the Wood Yard along by the foot of the hill to the western extremity of the Banlieu, and bounded on the north-west by the St. Charles River, bears the appellation of the suburbs of St. Roch.

A reference to the Map will illustrate this delineation, as it presents an exact view of the whole plat of the city, as bounded on the south-west by the line of the Banlieu.

The most efficient and valuable improvements ever projected for the benefit of the city, as the natural emporium of Canadian traffic, for the accomodation of the important timber trade of the St. Lawrence, and for the comfort of its commercial population, are the proposed wharves across the mouth of the St. Charles at low water mark to Beauport. The expense of the barrier wall would be a trifle contrasted with the indescribable convenience, which it would afford to the shipping—the vast security given to the lumber business—and the incalculable value of the new building lots which would so easily be made. By conducting the stream of the little river in its most eligible course, and thus forming an amply capacious and safe dock through the whole distance from the lower bridge to the point ; the remainder of the present swamp

which is uncovered at low water, would ere long be converted into beautiful streets, both for business and for dwelling-houses. The Upper Town, from the peculiar tenure by which its vacant lands are held, admits at present of little enlarged improvement,—and additional buildings to any extent cannot be erected. The Lower Town is unavoidably compressed to the utmost embarrassment of business and inconvenience of families. The suburbs are too distant for Merchants, whose commercial occupations are so imperative and urgent during the navigable season—and the only method to supply the defect, is to transform the course of the St. Charles River into a spacious floating dock on the south shore under the Cape, and thence to fill up and level all the intermediate extent to the present northern limits at the mark of high water—thus very beneficially occupying a large plat of at present useless land, and securely facilitating the mercantile transactions of the port—besides laying the foundation of an adjunct to the city, which for the accommodation of families, convenience of trade, and other palpable advantages, would be inestimable.

con-
d for
uliar
pre-
ional
ower
rass-
The
rcial
avi-
ect,
to a
pe,
ate
igh
f at
er-
un-
no-
al-



ROMAN CATHOLIC CHURCH.



PARLIAMENT HOUSE.

Drawn & Engraved by James Smith Junr.

As
have
for w
great
also
ducti
nate
surve
expe
ther
most
to th
for

TAR
dep
Mor
the
Cat
day

VISITOR'S DIRECTORY.

As Travellers are generally restricted to time, they have often lost the season fully to gratify their curiosity for want of an Itinerary, by which they might, with the greatest facility, view the most important objects,—and also from not having previously obtained a letter of introduction. A resident citizen as a companion, would designate and also describe the most interesting materials of survey—and thus remove the feelings of strangeness, and expedite the acquisition of knowledge. This Catalogue, therefore, will prescribe to the explorer his walk, in the most convenient order—for the descriptions he must refer to the pages where the particular article is recorded—and for his course to the Map of the city.

I. ITINERARY.

TAKING the Upper Town Market House as the place of departure, the observer has on the west, the ancient Monastery of the Jesuits, now used as the Barracks for the Troops of the Garrison, and on the east, the Roman Catholic Church, which is open nearly the whole hours of daylight.

The narrow avenue to the north of the Church conducts him to the Seminary. On his left hand is the Chapel ; which is entered by a door from the covered gateway, forming the usual avenue for the Pupils and others to the Institution. Thence he will proceed to the Church—and next to the Place d'Armes, where on the east of the Pentagon is the Castle of St. Lewis, the residence of the Governor—and in immediate front the old building once occupied for the same object—which partially conceals from observation the Chateau—and the gloomy exterior of which adds no ornament to the other circumjacent edifices. On the opposite side is the Episcopal Church ; and on the south, nearly adjoining it, is the Court House. The large edifice on the corner of Fort street, which was formerly known as the Union Hotel, is now appropriated for the public offices of the Government. Strangers ought especially to recollect that the front room on the first story contains the Museum of the “ Society for promoting Literature, Science, Arts, and Historical Research in Canada.”

Crossing the Place d'Armes to Des Carrieres street, the visitor will next inspect the Monument erected in memory of Wolfe and Montcalm ; and from the promenade at the exterior of the Governor's Garden, will view the beautiful landscape diverging to the north-east. He will then return to St. Louis street ; and having surveyed the Court House, and passed the office of the Commissariat, he will turn by Parloir street to the Ursuline Nunnery and Church. Having the Episcopal Church on the right, he will advance by Anne street, with the south wing of the Barracks on his right hand, to the Presbyterian

Church
right
Chap

If
mod
Ursu
requ
walk
the
the
he
to th
para
head
feet
its p
This
ston
the

H
scen
and
a ch
and
com
wh
low
retu
ove
opp
bel

Church ; passing its front, he will leave the Jail on the right, and opposite the end of the yard, is the Methodist Chapel, whence he pursues his course to the Esplanade.

If he has no citizen as a companion, and no other mode of visiting the fortification, he should turn up St. Ursule to St. Louis street, and at the Military offices, request from the Adjutant General a card of admission to walk round the interior of the Citadel. Having entered the grand western gate, where he leaves his ticket with the Soldier on guard, and having examined the edifice, he will first proceed round the course of the Citadel to the Flag Staff and Telegraph, thence southerly by the parapet bordering on the river to the machinery at the head of the Rail-way, or Inclined Plane, which is 500 feet long ; extending from the wharf to the Cape, where its perpendicular elevation is 345 feet above the stream. This Rail-way is used by the Government alone, to convey stones and other articles of great weight and bulk, for the erection of the new Fortress.

Having surveyed from the highest point the majestic scene, in every diversified aspect of hill and dale—land and water—barren and rugged mountainous heights, and a champaign opulent in the productions of agriculture, and all the encircling exhibition of human activity and commercial enterprise, which are presented unto him when the atmosphere is unclouded—the visitor will follow the course of the wall on his left hand, until he returns to the same gate, and pursue his walk by it, over St. Louis Gate along the Esplanade, until he arrives opposite the Church of the Congreganistes, immediately below which is the National School House.

Proceeding along St. John street, he will turn north of St Stanislaus street, on the east side of which stands Trinity Chapel, whence crossing Carleton street, he arrives at the Artillery Barracks and the Armoury—the latter of which may be inspected, if a resident of the city be in company.

Opposite the Armoury is the Anatomical Room of the Medical Society. Thence walking up Palace street on the right hand is St. Helen street—where is Mr. Chasseur's Natural Museum. Returning into Palace street, the visitor crosses obliquely above to Collins' Lane, in which stands on the left, the Chapel of the Hotel Dieu—and behind it the Nunnery and Hospital, with the surrounding Garden. He will then follow Couillard and St. Joachim streets, until, from the corner of St. Francis street on the right, is seen St. John's Chapel—thence he will pursue St. George street to the Grand Battery, where he will survey the prospect at the very end of the promontory—then on his left, as he walks towards the south, are the Grand Battery, and on his right the wall of the Seminary Garden, until he arrives at an open space, on the end of which in front stands the ancient Palace of the Catholic Bishop, now used by the Houses of the Provincial Parliament and their Officers. Following the Seminary wall a few yards from the corner, there is a neat view of the north end of the Chateau, the north east abutment of the Citadel with the Flag Staff and Telegraphic Communicator, and beneath, the top of the Monument. Crossing the area, and ascending the steps, at the house opposite the Post Office, formerly the Ma-

soni
ract
H
dwe
diat
ther
Cat
trav
T
hills
of t
stre
of t
dist
Aft
Die
tinu
Gua
acc
the
reti
vest
dist
caln
him
pass
the
who
and
ther

sonic Hall, the explorer will discover a remarkable characteristic inscription. (2)

Having thence crossed Fort street--on the right hand dwells the Catholic Coadjutor and Curé--and immediately behind is the east end of the Seminary, to which there is a short avenue, where is the residence of the Catholic Bishop--whence following the Church the traveller returns to the Market Place.

The observer will also be gratified by the view of the hills from the top of Fabrique street, near the east end of the Market House--and in walking along St. George street appears an equally agreeable compressed prospect of the heights of Point Levi. Similar glimpses of the distant scenery attract notice in all parts of the city. After viewing the Chapel and Hospital of the Hotel Dieu, the visitor may return to Palace street, and continue his progress to the Gate--where by passing the Guard House and pursuing his walk easterly, he may accurately understand the nature of the defence which the City can make against external assault--and enjoys a retirement nearly as complete as if he were beyond the vestiges of man. The first house at which he arrives is distinguished as the residence of the renowned Montcalm. There he may turn to the right which will lead him to Couillard street, or he can continue his walk passing Hope Gate, until he arrives at the Look-out from the north-east platform of the Battery. Those visitors who are desirous to trace the precise spots where Wolfe and Montgomery fell, must procure a guide to designate them. (3)

In the Lower Town, the only objects which merit notice, besides the Inclined Plane or Rail-way to the Citadel, are the Exchange Reading Room, and the Quebec Library—which are always open for the admission of strangers, if regularly introduced—and are worthy of a traveller's inspection.

The Military Bands amuse the public with a Concert of Music in the Market place, every winter evening at *eight*, and during the summer season at *nine*.

II. PROSPECT FROM CAPE DIAMOND.

It has often been remarked by strangers who have seen the landscapes most famed in travelling records, that as a *tout ensemble*, a more richly diversified exhibition of all that is elegant in nature's works can seldom be found, than that which the Amateur discovers on Cape Diamond in the clear days of July and August. In other situations the same scenery is partially observed, and with additional distinctness. From the north-east end of the Battery, near the Sentry Box, is a view circumscribing an area of at least 100 degrees—but from its comparative lowness, the water constitutes too prominent an object. At the lower end of the Esplanade, the whole western environs, form a beautiful land picture, with the meanders of the River St. Charles, and the suburbs of St. Roch. The Upper Town and the northern part of the Lower Town must be surveyed from the Telegraph and Flag Staff—because the Citadel inter-

venin
part
expat

On
street
Mont
not v
view-
bend
mina
Law
perce
conti
far a
egate
Obse
embo
ment
dista
appe
wood

In
pede
Cape
ham
citize
mou
the
exte
unec
view

vening impedes the view of them from the most elevated part of the Cape. With this exception, there the eye expatiates with unfailing delight.

On the north, the village of Beauport, in its lengthened street, with the intermediate bay—the bouche of the Montmorenci, for the actual projection of the stream is not visible, the mountainous ridge behind bounding the view—and the whole country sweeping in a circular bend to Cape Tourment, the high bluff of which terminates the regular scene on the north side of the St. Lawrence. Passing over the island of Orleans, the eye perceives the highlands on the opposite shore of the river continually tending to the southward, and forming as far as the vision can stretch, a vast amphitheatre of variegated appearance. From the river at the foot of the Observer, the nearer objects on the opposite bank embody forth their peculiarities in bold graphic lineaments; while gradually receding, the features of the distant country become more indistinct, until the horizon appears to be skirted only by one uninterrupted range of wood and mountain.

Immediately on the south-west, the prospect is impeded by the continued elevation of the table-land of the Cape, so that it comprehends chiefly the Plains of Abraham, the Martello Towers, the country residences of the citizens, and the course of the St. Lawrence to the mouth of the Chaudiere. From the west to the north the prospect is only hindered by a course of hills which extend to the south-west, in uneven progress, and at unequal distances from the river. In this part of the view, the village of Lorette, the Indian settlement of

Hurons—Charlebourg, with a dense distribution of houses, and nearly the whole land in cultivation from the foot of the highlands, bespeak a crowded active population, until the observer again recognizes the tin roof and steeples of the church at Beauport, where he commenced his view of the splendid scene.

The following delineation by Colonel Bouchette is so accurately descriptive, and eloquent, that it will aid the observer's contemplation; the picture is drawn *con amore*.

“Whoever views the environs of Quebec, with a mind and taste capable of receiving impressions through the medium of the eyes, will acknowledge, that as a whole, the prospect is peculiarly grand—and that if taken in detail, every part of it pleases, by the gradual unfolding of its picturesque beauties. Towards Beauport, Charlebourg and Lorette, the view is diversified with every trait that can render a landscape rich, full, and complete. The foreground shows the River St. Charles meandering for some miles through a fertile valley, embellished by a succession of objects that diffuse great animation over the whole scene. The three villages with their respective churches, and many handsome detached houses in the vicinity, seated on gently rising eminences, form so many distinct objects—the intervals between which display many of the most strongly marked specimens of forest scenery, combined with a wide spread appearance of fertility and good cultivation. As the prospect recedes, the land rises in gradation, height over height, with primeval covered woods, until the whole is terminated by a lofty ridge of mountains. Turning

toward
scene
leaving
church
promin
tern e
and a
Abrah
groun
wave,
humb
the r
strew
have
The
ascen
by w
remot
until
the e
cence
tion
splen
part

THE
objec
clear
as an

towards the basin, which is about two miles across, the scene is enlivened by the variety of ships entering or leaving the port. On the right, Point Levi with its church and groupe of white houses, and several other promontories, clothed with trees, and in front, the western end of the island of Orleans, present an interesting and agreeable subject to the observer. On the Plains of Abraham, from the precipice that overlooks the timber grounds,* the St. Lawrence is seen rolling its majestic wave, studded with sails from the stately ship to the humble pilot boat—and the opposite bank extending up the river is highly cultivated, and the houses thickly strewn by the main road, from this height and distance have the appearance of an almost uninterrupted village. The country to the southward rises by a very gentle ascent, and the whole view, which is richly embellished by water, woodland, and cultivation, is bounded by remote and lofty mountains, softening shade by shade until they melt into air. Hence the summer scenery of the environs of Quebec vies in beauty, variety, magnificence, sublimity, and the naturally harmonized combination of all these prominent features, with the most splendid that has been portrayed in Europe, or any other part of the world.”

III. MONTMORENCI.

THE justly celebrated Falls of Montmorenci constitute an object of inspection with every visitor of Quebec. In clear weather much enjoyment is realized from the ride, as an opportunity is offered to examine the soil, modes of

agriculture and habits of life of the Canadian farmers ; and also of viewing Quebec, and its environs in a novel aspect. It is generally conceded, that the Falls when the river is full is the most magnificent object in the Province—being replete with beauty and sublime grandeur. The breadth of the stream at the brink is about 25 yards, and the velocity of the water in its descent is increased by a continual declivity from some distance above.—With the exception of a large rock near the middle of the bed, the whole is one compact sheet of foam, which is discharged, almost perpendicularly, at the depth of nearly eighty yards into a reservoir among the rocks below.

There are three points which afford the best views of the Falls. 1. From the upper window of the Mill—whence the projecting leap is safely seen. 2. Having crossed the bridge the visitor proceeds along the brow of the hill, until he arrives nearly in front of the whole cataract—from this summit, the view, with the concomitant circumstances, inspires the compound emotions of awe, terror and astonishment. “ The prodigious depth of their descent, the brightness and volubility of their course, the swiftness of their movement through the air, and the loud and hollow noise emitted from the basin, swelling with incessant agitation from the weight of the dashing waters, forcibly rivet the attention, and highly elevate the mind of the spectator.” From the same spot, there is a lucid and beauteous prospect of Quebec, with its encircling scenery ; and with an ordinary magnifying glass, the observer can discern all the prominent objects—the steeples, towers, fortifications, principal

edifice
until
nity—
of An
Cape
tery s
pursu
advan
the st
from
cascad
survey
of its
arises
catara
bably
desiro
with
him,
petuo
and e
moder
guish
lizes
than
natur
a cor
the ri
the w
at ab
four

edifices, the shipping, the course of the St. Lawrence, until it is lost among the hills—Point Levi and its vicinity—the north side of the Island of Orleans—the point of Ange Gardien—and the shores of the river as far as Cape Tourment. Some vestiges of General Wolfe's battery still remain. 3. Hence he descends the hill, and pursuing its course to the right, he may ordinarily advance to the rock which interrupts the turbulence of the stream when discharged into the chasm. In the view from below the most vivid impressions of this gorgeous cascade are produced—and travellers who do not thus survey the Falls, can form only a faint and incorrect idea of its apparently changing effect. The spray which arises from the bottom, and which “flies off from the cataract in the form of revolving spheres,” is indescribably delicate and beautiful—and the observer who is desirous to enjoy the splendid exhibition of the rainbow, with all its prismatic colours, completely surrounding him, must proceed to the rock which counteracts the impetuosity of the waters. There in the clear sunshine, and especially when the wind blows the flakes of spray moderately towards the north-east, so that he can distinguish their progressive spread as they recede, he realizes this uncommon display, with no other inconvenience than a sprinkling, but attended with the enjoyment of a natural appearance exceedingly grand and delightful. At a considerable distance above the Falls, the channel of the river is contracted between high vertical rocks, and the water rushes with proportionate velocity. In one part, at about half a mile from the bridge, cascades of three or four yards in depth are adjacent to two fine geological

curiosities, familiarly denominated the *Natural Steps*, which appear to have been formed by the attrition of the stream, occasioned by the melting of the snows and the augmentic rapidity of the flood. Many of these steps are so regular, that they almost develope the process of human art. The perpendicular attitude of the rocks on the east side—the tree-crowned summit—the uniformity of appearance resembling an ancient Castle wall in ruins—the precipices on the western bank—and the foaming noisy current portray a romantic wildness, which is very attractive. Observers are amply remunerated for their walk, as conjoined with this interesting object, they witness the continuous descent and the accelerating force and celerity with which the river is propelled to the point, whence it is precipitated into the St. Lawrence.

The view of the Montmorenci from below at mid-winter, forms a striking contrast with its appearance in June. In immediate front, at the foot of the cataract, the spray congeals, and from its continual accumulation, increased by the frequent snows, a hill in the form of a sugar loaf is coagulated, varying each season in its height and bulk, according to the operation of the winds, and the intensity of the frost.

IV. THE CHAUDIERE.

A poetic observer standing on the margin of the river near the Falls, might easily transmute the Grecian imagery chanted by the Roman into the actual scene before him, and can almost fancy without any peculiar and

visi
aro
anc

T
Cata
visit
prom
To a
and
turo
tainl
stand
antig
be m
Tv
water
plays
the f
carria
[north
ble.
surve
Mont
new

visionary flights of the imagination, that he beholds around him the principal and most solitary dell of the ancient immortalized Tempe.

“Est Nemus—prærupta quod undique claudit
Saxa, ——— per quæ, Peneus ab imo
Effusus Pindo, spumosis volviter undis
Dejectisque—tenues agitantia fumos,
Nubila conducit, summisque aspergine sylvas
Impluit, et sonitu—vicina fatigat.”

The question has often been mooted, which of the two Cataracts in the vicinity of Quebec is most worthy of visit? and the only correct reply is, *both*—for in their prominent aspects, they exhibit few points of contrast. To a person who desires nothing more than the primary and sudden electric feeling of an overpowering and rapturous surprise, the cascade of Montmorenci would certainly be preferable—but to the visitor, whose understanding and sensibilities are animated by an infusion of antiquated romance, the Falls of the Chaudiere would be more attractive.

Two modes of visiting them are adopted—that by water presents no novelty, as the Steam-boat passage displays the same scene. The most agreeable is to cross at the ferry to the tavern at Point Levi—and while the carriage is preparing, to walk on the banks of the river, north-east, until the Falls of Montmorenci are perceptible. By this means, the visitor obtains by far the best survey of Quebec, which is presented to his regard—Montmorenci with its surrounding objects also offers a new and pleasurable landscape to the beholder—and a

novel view of the Island of Orleans, and of the river in its course below is enjoyed—both of which are nearly imperceptible from the city—except the more elevated part of the land extending to the Telegraphic Observatory.

As soon as the hill behind the tavern is ascended ; the scenery is very inviting—and when contemplated both going and returning comprises a successive diversity of feature highly picturesque. The distance to the mouth of the Chaudiere by the circuitous land road is nearly nine miles—and thence two routes are used to attain a sight of the Falls. 1. By one course, visitors cross at the ferry—and an indirect path conducts them to the west bank of the river. 2. By the other, the traveller diverges from the St. Lawrence, some distance north of the Chaudiere, and arrives within a short walk of the Falls on the eastern bank.

The river at the Cascade is much compressed ; being only about 400 feet across ; and the depth into the *Pot*, as it is usually termed, is nearly 45 yards. Many rocks divide the stream, precisely at the fall, into three chief currents, of which the westerly is the largest—these partially re-unite before their broken and agitated waves are received into the basin ; where each dashing against the other maintains a turbulent whirlpool. The form of the rock forces a part of the waters into an oblique direction, advancing them beyond the line of the precipice, while the cavities in the rocks increase the foaming fury of the revolving waters in their descent, displaying globular figures of brilliant whiteness, which are richly contrasted with the encircling dark and gloomy cliffs,

while the ascending spray develops all the variety of the coloured cloudy arch, and enlivens the beauty of the landscape. The wild diversity of rocks, the foliage of the overhanging woods, the rapid motion, the effulgent brightness and the deeply solemn sound of the cataracts, all combining to present a rich assemblage of objects highly attractive, especially when the visitor, emerging from the wood, is instantaneously surprised by the delightful scene. Below, the view is greatly changed, and the Falls produce an additionally strong and vivid impression.

If strangers only view the Falls from one side of the river; the prospect from the eastern shore is recommended as preferable. Those persons who are desirous to carry away with them a unique remembrancer of their visit, on the western side and in immediate contact with the stream, during the season, may gather strawberries—thus commingling a chief luxury of the garden, with the profusion of Nature's uncultivated and original magnificence.

The Falls of Montmorenci are not immediately surrounded by any rugged scenery, calculated to strengthen and perpetuate the peculiar emotion, which is excited by the first glimpse of the cascade—but the dreary wildness in the foliage of the encircling forest, the total absence of every vestige of human improvement, and the tumultuous war and commotion and effulgence, that incessantly occupy the mind and rivet the senses of the beholder in the survey of the *Chaudière*, conjoined with the wider expansion and larger quantity of the water in the stream; in the opinion of many visitors, more than compensate

for the greater elevation from which the waters of the Montmorenci are precipitated.

V. LORETTE.

ONE of the most agreeable excursions in the vicinity of Quebec is that to the Indian village, and Lake St. Charles. The driver should be directed to change his route on the return, so as to pass by the eastern bank of the river, and thus the varying scenery is partially changed.

After a considerable ascent, at four miles distance from Quebec, the traveller arrives at Charlebourg, a very conspicuous village, comprising about seventy houses—thence the western route conducts to Lorette, and the easterly course leads to Lake Beauport, the ride to which is amply compensated by the diversified landscape.

Nearly two miles north of Charlebourg, at the foot of the hill, is a vestige of former times; the sight of which, in connection with its traditional history, recalls to remembrance some of the lawless doings of Gothic chivalry. Its familiar appellation is the *Hermitage*—the building is in a ruinous condition, and the garden spot is still discernible. About six acres of land are cleared, which are embosomed amid a dense forest, close by a stream, which, from its rapidity, is never frozen.

The Hermitage, it is understood, was erected, more than a century ago, by one of the Intendants under the French government, for the secluded residence of a Lady—and at that period, it must have been almost as

un
rin
re
mo
his
anx
me
his
swa
mor
an
see
dan
this
serv
only
and
nate
only
T
buil
exte
poin
incl
a bo
in i
mou
man
roar
trac
the

unknown and inaccessible as Rosamond's fabulous labyrinthian bower. Two narratives of the cause of this retreat exist. The first states, that the Intendant from motives of jealousy selected this spot, in which to immure his wife—whose accomplishments and beauty he was anxious to keep secret from the knowledge and allurements of his associates—but it might be supposed, that his jaundiced feelings were ample torture, without the swarms of mosquitos and gnats, which, during the summer months, must have rendered the Hermitage any thing but an abode of rest. The second tale is more plausible and seems to be attested with superior evidence. The Intendant resided at Beauport with his family, and erected this habitation for his Mistress, whom he wished to preserve safely from the hatred of his wife. It now however only stands as a dilapidated memento of anterior times, and of persons whose names cannot be precisely designated. The enjoyment of the ride thither is its present only recommendation.

The Indian village is about eight miles from the city, built upon an elevated situation, whence there is an extensively varied and agreeable landscape, in many points similar to that from Cape Diamond, but also including some attractive novelties of outline. It exhibits a bold and beautiful view of Quebec and its suburbs, and in its extent, it is bounded solely by the distant southern mountains. The Indian inhabitants of the village retain many of the prominent characteristics of the aboriginal roamers of the forest, combined with vicious habits contracted by their propinquity to a large sea-port, and their intercourse with its migratory population. At the

village is a very charming view of the river St. Charles tumbling and foaming over the rocks and ledges to a great depth. The rugged and perpendicularly elevated woody cliffs in connection with the impetuous rush of the waters, although circumscribed in extent, and therefore affording no expanded prospect, in immediate front, yet as seen from the Saw Mill, and from the bank and the bridge at the head of the dell, in its different positions and aspects, constitute an object, which when contrasted with the more majestic cataracts of Montmorenci, and the Chaudiere, or recollected in combination with them, furnishes in memorial, an addition to the varieties which those stupendous natural curiosities embody.

VI. LAKE ST. CHARLES.

THE distance from Lorette to the Lake is nearly six miles, and speedily after leaving the village, the grand prospect and the traces of civilization and human existence become comparatively "faint and few and far between." On the return from the Lake, the effect is instantaneous. Emerging at once by the turn of the hill, from deep solitude and a compact forest, into all the expanse of the extended and variegated landscape, discernible at the foot of the exterior mountain, the traveller is enraptured with a display of aboriginal and cultivated drapery to which memory ever delights to recur.

The Lake is an enchanting picture ; and those who have beheld some of the more renowned European inland waters, have asserted, that it developes imagery little inferior in natural beauty and creative decoration to

those reservoirs, which history and poetry have consecrated to perennial remembrance. Upon a calm summer's day, when in the season the forest displays its numberless lights and shades, and the mountain, wood and waters all repose in undisturbed calmness, the quietude of the scene exactly harmonizes with the placidness of a good conscience. If the beholder there recalled Henry Kirke White to his memory, he might justly and feelingly soliloquize in the strains of that lamented Bard :

“ And oh ! how sweet this scene o’erhung with wood,
That winds the margin of the solemn flood !
What rural objects steal upon the sight—
What varied views prolong the calm delight !
Above, below, where’er I turn my eyes,
Rocks, water, woods in grand succession rise !”

In outline, the Lake St. Charles is very irregular—it is rather more than four miles in length, but its greatest breadth does not exceed one mile ; and it is subdivided, by a narrow strait, into nearly equal portions. Embosomed, between elevated hills, its shores are clothed with that density of wood and diversified foliage, which are so universal in North America ; and the peaks and tops of some of the more distant northern mountains are singularly varied in their configurations, and from their height are exhibited in a very imposing aspect. The points of land which occasionally stretch into the lake are covered with shrubs and many species of trees ; while abrupt rocky bluffs, and small swampy bays alternately present to the amateur and man of science, a rich display of ornament, and materials for geological and botanical

research. In scenes of this character, the Omnipotent developes to our apprehension his beauteous and fascinating material operations—and strangers who visit Quebec, and who do not devote a few hours to a sail upon this Lake, lose the contemplation of a highly endowed and picturesque landscape, and deprive themselves of a lovely excursion, and an unalloyed indulgence, to which the mind would always revert in gratifying retrospect.

Of Lake St. Charles, in the early winter, in a clear brilliant meridian, and a calm atmosphere, no language can possibly convey a more accurately descriptive idea, than Grahame's harmonious poesy—it is the very imagery of the cold frosty Canadian latter autumn, conveyed by genius in words to the eye :

——— “When the waveless lake,
In which the wintry stars all bright appear,
Is sheeted, by the nightly frost, with ice—
Still it reflects the face of Heaven, unchanged,
Unruffled by the breeze, or sweeping blast.”

He who has seen the graceful picture in July, even if he has not beheld the subsequent metamorphosis in November, upon reading those lines, will feel re-animated with the reminiscences of Lake St. Charles, and the indescribable first glimpse of the prospect on his return to Quebec.

To t
and i
copa
It ap
the
chara
Low
that
pictu
hill
extre
ing r
the v
gress
T
ness
edifi
the
a pe
The
stre
imm
mot
torp
muc
pres
the
all
abo

VII. PANORAMA OF QUEBEC.

To the admirers of a Panorama, the survey of Quebec and its perceptible vicinity from the steeples of the Episcopal and Roman Catholic churches is very enchanting. It apparently combines much of the illusions of art, with the palpable reality of nature. The perpendicular character of the declivity precludes the view of the Lower Town immediately beneath the precipice, but that of the Upper Town and the Suburbs is impressively picturesque. From the Flag Staff along the brow of the hill until it reaches its highest elevation on the northern extremity of the Plains of Abraham, and thence passing round the Suburbs, the limit is restricted—but from the west, it expands itself to the distant hills, until progressively it terminates in Cape Tourment.

The nearer objects are presented in all their clearness and variety ; and not only do the more prominent edifices appear in their proportionate importance, but the different thoroughfares which are discernible, give a peculiar vivacity to the otherwise agreeable exhibition. The Market-place, Fabrique street, Buade street, Anne street, the Place d'Armes, and Des Carrieres street, immediately below, combine a contrast, which, by the motion of the pedestrians, delightfully mingles with the torpid masses around them. The effect of the scene is much augmented, by the skirting of the city, as thus presented to the observer. From the west, northerly to the east, the rising heights encircle the view ; unfolding all the variegated appearance of the mountain tints above the fields in cultivation, and especially, the bay of

Quebec, with its numerous vessels of all descriptions, moving and at anchor, unveils a panoramic prospect of particular richness and beauty, characterised not only by an extraordinary diversity, but also by an uncommon distinctness—as in pictures of this species, especially where large cities are delineated, the confusion of the objects frequently diminishes our pleasurable emotions.

Gentlemen who visit Quebec are urgently recommended to obtain permission that they may ascend one of the steeples for this purpose ; as the glimpse of the city from the north-east end of the citadel is totally inadequate to convey any correct idea of the principal features, which the view from the spires of the churches presents in such charming graphic relieve.

VIII. QUEBEC TO PAUL'S BAY.

THAT visitors may be induced if possible to arrange for an excursion around the Island of Orleans, or lower down the river, the following concise description is presented to their perusal.

The view of the scenery from the west end of the Island is exquisitely diversified—there is a richness of combination, and a variety of picture, which the pen would vainly attempt to delineate. Near the Point Levi, the river is seen some miles to the south-west ; the Suburbs of St. Rock ; and the country extending to the near heights around to Charlebourg.

There is a beautiful contrast between the woody and verdant appearance of the Point Levi, and the north-side of the city in its gradual elevation from the water.

This panoramic view is highly impressive. After rounding the point, the distant blue hills to the eastward appear—thence the eye looks upon the lower land and woods of the Point Levi. This expedition is varied by the cleared country and lengthened village of Beauport, with the hills beyond ; the bluff prominence at the end of the Island ; the extraordinary grandeur of the Falls, which appear like one vast uninterrupted sheet of precipitated foam ; and thence transferring the eye up the St. Charles River, the bridge unfolds a romantic composure, highly picturesque. The view of the city, when the mouth of the St. Lawrence is no longer perceptible, exactly fills up the magnificent landscape.

Above Quebec there is nothing scarcely worthy of notice, after this view, except the scene below the Richelieu Rapids, and the approach to Montreal.

As the observer proceeds down the river, the objects disappear until a picture of unique beauty is presented. The church and the village of Point Levi are distinctly seen in the left corner. In the front is an amphitheatre extending from St. Rock's Suburbs to Charlebourg, which bounds the view. The rear of the survey is encircled with the high hills, which also appear over the end of the Island—and amateurs are particularly requested to watch for the opening of the elevated village on the extreme right, that they may enjoy a *coup d'œil*, which through a good magnifying glass is indescribably beautiful and delightful. Proceeding down the river, the south shore of the Island, near the water, is very partially cultivated, and presents continued undulations. The scene about the Telegraph and below is highly

agreeable, and thence onward to the point on which stands the church of St. Laurent, exhibiting an exact picture of Canada, when cultivated and settled near the banks of the St. Lawrence ; except that the country as the river is ascended develops occasional marks of superior agriculture. Below the parallel of the church of St. Laurent, the view is very attractive, containing all the ornamental assemblages of a landscape, wood, farms, water, and highlands. The first sight of Cape Tourment, presenting its bold bluff in all its rich blueness, here forms a rich contrast, with the verdant Islands studded with houses more immediately in front. With the vessels in full sail up and down the river, the scene is greatly enlivened—as the stretch of the landscape westward includes a low space between the Island on the right, and a romantic view of Point Levi, adorned with its church and village at the base.

From the Telegraph to St. John, the side of the Island is entirely cultivated, and speedily after receding from the last glimpse of Point Levi, the Island Madame appears directly ahead. From Point St. John the Capes below Cape Tourment become visible—and the appearance of the Island to its woody point on the east end remains identical. On the main land, the south shore comprises the usual variety and the ordinary features of the banks of the St. Lawrence. The view from the river, when equi-distant from St. Laurent and St. John, is beautifully varied. In the Seigniories to the south it is less divested of wood, and the alternations of clumps of trees amid the cleared ground give to the scene its characteristic American features—while on the north

the v
guide
west
there
skirt
river

As
of Ca
plete
lands
to th
tance
of th
distin
comm
varie
with
their

At t
imme
Island
deligh
devel
length
fields
hills
ately
lands
to th
Cape
the c

the whole shore is perfectly cultivated, and completely guided by the circular range of mountains extending westerly from Cape Tourment. Above and below there is a sweet landscape, which on the east is entirely skirted by the first range of highlands running from the river towards the south.

As the progress is made down the river, and the base of Cape Tourment becomes discernible, the scene is completely changed. On the south shore, the low cultivated lands are thickly settled, and present a rich foreground to the gradually ascending country, until at a far distance in the rear, the landscape is bounded by the tops of the continuous mountain range. The gradual ascent, distinctly perceptible from the southern shore to the commingling of the hills with the sky, offers to view a varied and roomy landscape, which is strongly contrasted with the Island, capped by the blue hills, exhibiting their varied tops and craggy projections.

At this point the river greatly widens, and the scene in immediate front assumes an oceanic feature. After the Island is completely passed—the view up the river is delightful. On the Island it extends to St. Laurent, developing a fine bay with the Isle Madame in front—a lengthened view of the north shore with its cultivated fields, and forest ascending behind to the top of the lofty hills bounding the view. The Priests' Farm is immediately in front, from which is another rich and diversified landscape. From the foot of Cape Tourment the view to the eastward is extended by the course of the hills to Cape St. Rock on the south shore—and on the north, the continuous succession of bold barren head lands is

seen nearly to Paul's Bay. The succession of islands, Madame, Crane, Goose, and the smaller islets, bear many of the same features. They are not much elevated, woody, and with the exception of Crane and Goose Islands nearly uninhabited.

Passing them on the north side, they present some diversity of pictorial appearance—long low levels, and round terminating prominences—but as a whole they constitute a kind of distinct parapet to the distant southern scenery, interspersing with the smooth shore in front, bluffs, inlets of water, and verdant forest in its distinctness of foliage.

Between the islands appear the villages of Berthier and St. Thomas, with the picturesque and thickly peopled settlements around them.

After pursuing the course some miles, on the north shore, the direct front view is intercepted by the Isle Aux Coudres—which forms an interesting perspective, when the approach is sufficiently near to distinguish its low and sandy shore ; church and houses forming an interesting diversity of minor landscapes as a foreground to the rear high lands. This scene displays a perpetual variety of appearance in its minuter forms, as the observer changes his position. The extremity of the view easterly is marked by Goose Cape and Cape St. Rock ; all between them being uninterrupted water.

Of the islands generally it may be remarked that they have a bolder and more attractive appearance on the sail up than down the river.

Paul's Bay about three miles deep and two wide, at its entrance, Cape au Cabeau on the east, and Cape de la

Ba
Th
to
for
un
ch
ho
for
top
blu
na
ap
en
lof
cu
tur
ob
en
th
str
th
we
un
wa
ho
wa
th
in
or
cl
fa

Baie on the west, into which empties the River Gouffre. These Capes are of considerable height and approximate to a perpendicular ascent. The bay is of an ampitheatre form, and with the lofty circuitous hills to the north, unfolds a very romantic and agreeable scene. The church is a prominent object—and the thickly clustered houses at the head of the bay are in a semi-circular form. The hills behind are very precipitous, and their tops present a grand variety of appearance in round bluffs and sharp cones carried about, until they terminate in the Capes at the mouth of the bay. In its hilly appearance, the north scene a little resembles the upper end of the Lake St. Charles, with a bolder outline and loftier prominences. This view is softened, by the cultivated appearance of the front low ground, and by turning to the Isle Aux Coudres, which exhibits to the observer from the bay a miniature picture of the west end of the Island of Orleans—and on the east, between the island and the main land, is seen the long blue coast stretching to Goose Cape—and thence turning across the river, here thirteen miles wide, the view from the west point of the island meets the southern landscape, until in its ample extension of hill and dale, islands, and water, the whole is intermixed with the maze of the horizon. The front view of Paul's Bay, exclusive of the water, is much assimilated in a minor degree to some of the Swiss valleys among the spurs of the Alps, both in the wildness of the hills, and the studded small farms on the more level but undulating ground below. Of the climate in this vicinity some idea may be formed from the fact that, on the eighteenth day of May, large quantities

of snow still covered the tops of the mountains to the north.

The Capes have a great similitude of appearance ; they are partly bare, or partially covered with stumpy evergreens, dwarfish pines, and shrubs of the hardier species. The high prominences are clothed with the same desolate and cheerless exterior ; varying principally in their elevation and the sharpness of their projections towards the water. They offer a striking contrast with the southern bank of the river, which latter constitutes a vast amphitheatre ; the only defect of which as a landscape is, that from the distance, the objects are so amalgamated as to produce an indistinctness of vision.

Proceeding up the river, the Capes change their appearance, and are much more romantic. They form an apparently continuous succession of promontories and mountainous cliffs—the rough wildness of which is augmented by the momentary glance at the regularity of the elevated lands to the south. This scenic uniformity is beautifully interrupted by the varying appearance of the islands in front. The landscape, as the observer ascends the river, is of superior gratification to that on the progress downwards—to the east it is almost a larger space of water—but the adjacent mountains, the distant hills, the nearer land, relieves the eye from the unchangeableness of a merely aquatic view.

The Capes all bear the same generic character, and appear to be of a similar formation with the chain which is extended along to the north and west of Quebec.

Near Cape Gribanier the elevation and exterior features and aspect of the hills, are occasionally very much

like
up
ster
l
set
roc
cul
we
pro
app
clu
the
ter
?
ity
riv
Th
co
to
ar
we
th
m
le
O
Ca
all
cu
be
di

like part of the highlands on the Hudson, and the upper end of Lake Champlain—only developing more sterility.

From Cape Tourment to the Petite Riviere not one settlement is found—the whole shore is too abrupt and rocky, and the banks being craggy and nearly perpendicular, although of various altitudes. From the first westerly cottage, towards Paul's Bay, the inhabitants progressively increase and thicken until the village is approached. These persons must unavoidably live, secluded from all intercourse with mankind, full one half of the year, in the very dreariness and solitude of an unintermitting arctic winter.

The north shore of the Island presents a great similarity of appearance with the southern—ascending the river on the right, the scenery is beautifully varied. The settlements are near the bank of the river, which is considerably raised, and form almost a continual street to Quebec. From the Priests' Farm several parishes are passed, the Chateau Richer in ruins, and at the west end of the Island, the grand view of the bay, and the Falls of Montmerenci unfold all their beauty and magnificence.

By the southern channel of the river from the parallel of the Isle Aux Coudres to the end of the Island of Orleans, the scene is of course changed. The range of Capes appear in the distant north, enclosing the view in all their rugged barrenness, and the southern shore in its cultivation, villages, and almost unbroken settlements, becomes here distinct and beautiful in its variegated display.

The breadth of the river renders any attempt for scenic survey below Paul's Bay useless—but in all excursions to view the river the Steam-boat should take both courses—the southern channel should be passed by one route, the Isle Aux Coudres should be sailed round on the eastern side, and the northern channel be pursued on the return, or vice versa.

When the tide would serve at a very early hour in the morning, so that the excursion might be completed by the dusk of the evening, it is believed, no inland soil on the continent combines a richer picture in ornate variety than the trip to Paul's Bay.

IX. ITINERARY.

AFTER this chapter was sent to the Press, a manuscript of hints respecting the scenery of Quebec and its environs, and the most agreeable prospects and excursions around the city, was communicated to the Editor by an amateur whose name is unknown. Probably the writer will scarcely recognize his own detail in the ensuing section, but it was deemed preferable in statu quo, to be charged with repetition, than not to insert the view of another observer. Some minute specifications in the hints are excluded as incongenial with the design of this work, and a few additions have been made, in conformity with the marginal suggestions.

The omissions are chiefly upon those topics, which are more fully illustrated in their proper sections, except in reference to the scientific remarks. Upon this point, it may not be improper to remind the erudite scholar and

polished son of science, that this little work was not intended to display learned historical lore, much less to elucidate the arcana of nature's recondite philosophy; it is merely designed to extend the knowledge of the most prominent objects which claim and merit examination around Quebec, and to facilitate all persons in the gratification of their desire to survey the varied objects which invite their regard. Conceiving therefore that the manuscript, a little modified, would subserve the grand design of this publication—this Itinerary is inserted—and it will also demonstrate the same impression which is produced upon the minds of observers, when it is added, that notwithstanding the exactitude of idea, and the almost verbal similarity of language, the author of the following remarks never will see any part of the Picture of Quebec, until it is duly published.

It is desirable that strangers arriving at Quebec should so dispose of their time, that they may be enabled to embrace many objects in a given period. The following remarks will assist them to accomplish so desirable an end.

Our American friends unfortunately visit Quebec as the last *Lion* in their tour—and generally embark in the Steam-boat from Montreal, remain twenty-four hours, and then return, without seeing any thing, except a cursory view of the city—whereas Quebec and its environs abound in the most romantic and charming views, certainly not equalled on the continent of North America, and affording a rich banquet to all admirers of the beauties of nature.

Upon attempting to gain the first view, the highest spot should be selected, if convenient, as the steeples of

the Churches, or any other lofty object—as thence, the whole vicinity so far as perceptible, is at once, like a map, distinctly seen. An attendant acquainted with the landscape, and who can define the various towns, villages and the topography of the whole, is highly requisite, as the spectator thereby obtains a general knowledge of the locality of the various prominent scenery. When within the Citadel, a position should be taken near the Inclined Plane within the walls—from this spot, the course of the river up and down, with the opposite banks of the St. Lawrence, the extensive plains backed by aerial mountains, the shores of Beauport, the mouth of the Montmorenci, the chain of mountains terminating in Cape Tourment, the Island of Orleans, and the Bay of Quebec, offer a *coup d'œil* very magnificent, and scarcely surpassed on earth.

From the top of the Signal Post and the summit of Brock's Cavalier, two splendid panoramas of the city and country are beheld. They are unrivalled—for the boasted Bay of Naples would gain little by the comparison. The walk along the Ramparts, looking to the Suburbs of St. Louis and St. John, is a delightful promenade, enlivened by extensive and beautiful views. At high water, near sun-set, the river St. Charles from the fortifications presents a lovely lake-like scene, the shores of which are studded with buildings, lit up by the declining rays of the glorious orb. From the Grand Battery and the promenade in front of the Monument to Wolfe and Montcalm, are seen extensive and charming prospects. Indeed no city in the universe combines more lovely promenades,

whi
than
A
bea
tint
turn
und
leav
mig
inte
on t
ado
terr
Pla
The
the
from
assa
gain
A
Lo
of t
lan
itse
var
and
Ga
ma
ren
ext
str
rig

which present splendid views of the highest attraction, than Quebec.

A morning's walk to the Plains of Abraham, offers the beautiful scenery with its historical recollections in fresh tints. The pedestrian, on leaving St. Louis Gate, should turn up the stairs to the Glacis, continue his course under the Citadel, and pursue a path to the right, leaving the Tower No. 1 to the right. A public mall might easily be formed in this direction of the most interesting character. The views of the St. Lawrence on the left and front are very beautiful, and the path is adorned with the hues of different evergreens. At the termination of the inclosures, the bank is ascended to the Plains of Abraham, near the spot where Wolfe died. The large house at a distance in the front, is erected on the site of a French redoubt, which defended the ascent from Wolfe's Cove, and was the primary object of assault and capture, after the top of the hill had been gained by the British troops.

A pleasant ride may be enjoyed by proceeding from St. Louis Gate, and pursuing the road on the right side of the wood. Emerging from the woods, the magnificent landscape to the southern mountains suddenly presents itself to the equestrian with much of its amplitude and variety. Arriving at a cross, a turn is made to the left, and by another route the return is made to St. Louis Gate, or passing down the hill to the Coves, the course may be taken immediately on the banks of the St. Lawrence to the city. This ride might otherwise be extended to the Cap Rouge, the scenery upon which stream presents very attractive features. There the right hand road should be pursued, which conducts to the

St. Foy Church, and thence to St. John's Gate. By thus changing the route, the whole southern landscape is viewed on the river road, and the northern prospect is beheld on the return.

From the shores at Point Levi, the landscapes combine both novelty of outline and perspective impressively beautiful. The visitor, having procured his calash, ascends the hill, and from its summit an almost unequalled prospect is beheld. This is a ride filled with picturesque scenery in all its charms. It is on this hill that Quebec in all its castellated grandeur appears in its grandest and most imposing aspect, and especially towards evening, when the purple shadows diversify all the landscape with their delicious colouring. About five miles from the city, the Etchemin is crossed, and the traveller pursues his course to the Chaudiere. This ride and the Falls afford ample materials for geological exploration. The view from below Point Levi may be enjoyed as a distinct excursion; this includes the Falls of Montmorenci across the Bay.

Another excursion is to the Indian Lorette, whence the views of Quebec and the distant country are very enchanting. The immediate encircling scenery is cheerful and attractive, thence the course is pursued to Lake St. Charles, returning from which, and approaching the habitations nearest the exterior hills, the view bursts upon the sight, which will never be forgotten.

A morning may also be devoted to a ride to Lake Beauport.

There is also an easterly excursion by land which combines superior attractions, but it cannot be completed in less than three days, and the tourists must previously

supp
It is
first
the
surv
step
Tre
mon
are
abo
a r
wa
arr
mo
res
tis
wa
th
of

w
P
w
co
st
a
m
it
si
k

supply themselves with their own necessary comforts. It is on the northern shore of the St. Lawrence. The first halting place would be the Falls of Montmorenci—the best view of which is from the east bank. Having surveyed them from the top of the aqueduct, the natural steps should be visited ; in miniature these resemble the Trenton Falls in the State of New York. From Montmorenci, the ride proceeds to the Chateau Richer, which are the ruins of a Franciscan Monastery that was built about one hundred and thirty years since. It stands upon a rocky promontory on the bank of the St. Lawrence. It was destroyed by the orders of General Wolfe, when his army was encamped on the eastern bank of the Montmorenci. Through the intervention of the Priests who resided there, the Habitans refused to supply the British troops with the necessary provisions, and so strongly was the edifice defended, that artillery alone reduced the fraternity to subjection. Part of a tower and some of the exterior walls only now remain.

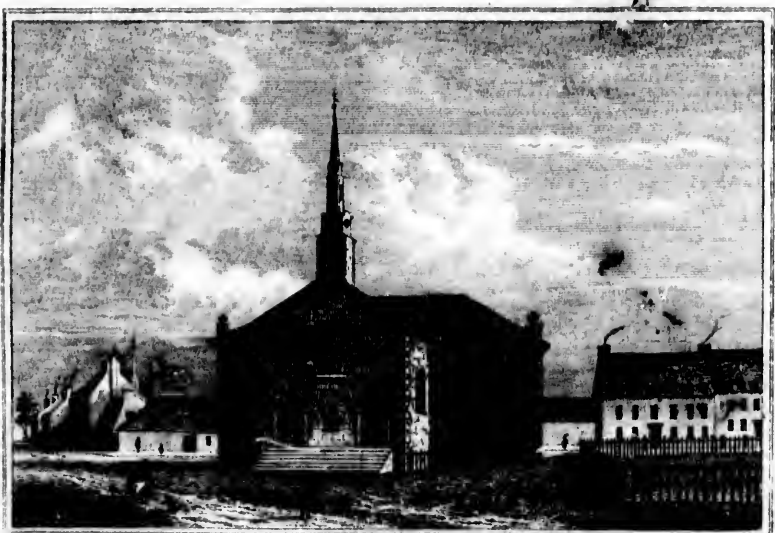
About two miles from the Chateau Richer, the visitor will halt, and walk a short distance to the Sault a la Puce, a small stream descending from the high lands, which, often winding through a mountainous and woody country, comprises some very romantic falls, where the stream is precipitated in three declivities in succession, and the banks are rich in a profusion of sylvan ornaments, and especially when the autumnal foliage displays its multiplied variety of beauteous tints. There is some similitude between this scene and the Falls of the Catski. l mountain.

Thence the route leads to St. Anne ; and two miles beyond the village, at twenty-eight miles distance from Quebec, the traveller proceeds to visit those interesting Falls. The road ascends a part of the way up the mountain—there are seen splendid prospects of Quebec and the adjacent country—but without a glass, from the distance, the scenery in the back ground is rather indistinct. Having attained the level, a rough path for nearly a mile and a half conducts the visitor, after a sudden descent into a most solitary vale of rocks and trees, almost a natural grotto, through the centre of which the stream rushes, until, it escapes by a narrow channel between the rocks, and continues roaring and tumbling with augmenting velocity. From below, there is a striking view of the Cataract, which combined with the natural wildness and extraordinary features of the scenery baffle description : the painter alone could convey to the mind the representation with effect. Some amateurs prefer this scene to the admired Trenton Falls.

The scenery around the Priests' Farm, near Cape Tourment, is very attractive, and the sight of the valley and Falls of St. Fereole will compensate for the fatigue experienced in descending to them. To complete the excursion, the visitors should arrange, if possible, to stand on Cape Tourment in the morning, there to behold the sun emerging from the horizon. From this bold bluff, nearly six hundred yards above the river St. Lawrence, to the east, south and west is presented a diversified landscape, which includes every variety that the painter can embody. Mountain and valley, wilderness and culti-



EPISCOPAL CHURCH.



THE PRESBYTERIAN CHURCH.

Drawn & Engraved by James Smith.

v
o
th

ex
th
th
no

T
ar

of
wh
de
Ca
No
de

th
be
Su
L
su
DE
UN
siv
pe

vation, land and water with their appertenances and ornaments, here shewing a modern's operations, and there bearing the marks of antiquity.

To the connoisseur, the artist, and the scientific explorer, this excursion will afford a vast accession to their stores of knowledge, and it will not less gratify even the traveller who only roams for health, the sight of novelty, and the acquisition of unsullied enjoyment.

X. EXCURSIONS.

Two superior enjoyments both for citizens and tourists are still wanting.

1. A regular and easy communication with the Island of Orleans, with the means in constant readiness, by which visitors might ride to its eastern extremity; and if desired, thence be conveyed by water to the foot of Cape Tourment, that they might ascend to its summit. No person beholds that point from Quebec, who does not desire to stand on its superior elevation.

2. It is a great disappointment to many travellers that they cannot conveniently view the St. Lawrence below Quebec. A Steam-boat occasionally sails on a Sunday for thirty or forty miles below the city, but *the Lord's day is totally objectionable for a sail of pleasure*. EVERY PRINCIPLE OF PERSONAL MORALS, SOCIAL DECORUM, AND CHRISTIANITY, ANATHEMATISES THE UNGODLY PRACTICE. Besides it is not sufficiently extensive to satisfy curiosity, or to develop the varied prospects of the northern and southern shores.

A boat should start early in the week, if the weather permitted, and proceed to Kamouraska—thence cross to the mouth of the Saguenay—coast the north bank of the St. Lawrence—pass between it and the Island of Orleans, or *vice versa*. The whole excursion to be made by daylight. As a few weeks only would admit of such a voyage, it is believed, that the attempt would be highly agreeable to travellers, and not less advantageous to the Steam-boats.

If this more distant trip could not be arranged ; a sail to St. Thomas, St. Paul's Bay, and around the Island WITHOUT SABBATH-BREAKING, would partially supply a very desirable gratification, both to strangers, and also to the resident citizens.

To verify this fact, and to represent to strangers, the gratification which they may anticipate from a sail down the river ; they are reminded of the concise description already incorporated, which comprises the view of the scenery between Quebec and Paul's Bay.

ECCLESIASTICAL EDIFICES.

I. EPISCOPAL CHURCH.

THE representation was drawn from the north end of the Chapel attached to the Ursuline Convent, including part of Anne street. With the exception of the unfinished Catholic Church in Montreal, this edifice is one of the most perfect and pleasing specimens of Canadian architecture. Although not much ornamented, the keeping is correct. Built upon an elevated spot, the steeple, which is of considerable height, being covered with tin, is a very perspicuous mark, and one of the objects most prominent in every discernible view of the city. The grand entrance is on the west ; and the interior is neat and commodious, having extensive galleries on the front and sides. It is furnished with a powerful organ of sweet melodious tone. Arrangements are also making, by which it is to be supplied with a set of bells.

To an observer the whole situation appears light and graceful, which is increased by the effect of the glittering roof and spire. The walls are of grey sandstone. In length, it extends forty-five yards, by twenty-five yards in breadth ; including a considerable interstice for the altar, and a capacious vestibule. It is erected on the west corner of the Place d'Armes ; the chief front, with a spacious area, being on Garden street.

II. ROMAN CATHOLIC CHURCH.

FRONTING on the east side of the Market-place, stands the principal Roman Catholic Church. It is a massive, unornamented and spacious stone building—in length, measuring seventy yards, and is about thirty-six yards in breadth, but it is rather disproportionately high, and otherwise defective in geometrical delineation. The spire, from having been erected on the south side of the edifice, gives to the front view a singular and rather ungrateful appearance. From the vestibule, the body of the interior is subdivided into equal proportions; and on the north and south are two spacious aisles. At the termination of the nave is the grand altar in the middle of the ellipse constituting the sanctum, the walls of which are ornamented with representations and figures, commingled with various other graphical emblems.

The pulpit is a transcript of antiquity; and the ends of the side aisles are also decorated with the various Roman Catholic symbols and their usual concomitant appendages.

During the siege of Quebec, in 1759, this Church was set on fire by shells, which were discharged from the battery on Point Levi, and all its paintings and other ornaments were consumed, except the first mentioned in the ensuing catalogue, which was found among the ruins, but so essentially injured, that the labor of the artist was required to restore the parts which had been mutilated.

In the Church are found the following pictures.

1. The Altar piece portrays the Conception, in the style of *Le Brun*.

2. On the north is a representation of the Apostle Paul in his extatic vision. II Corinthians xii.—by *Carlo Maratti*.

3. On the opposite wall is a design by *Restout*—The Saviour ministered unto by Angels.

4. The painting above the altar in the south nave is a recent copy of the middle painting over the altar in the Chapel of the Seminary—the flight of Joseph and Mary with the young child into Egypt. Matthew ii. 19—21.

5. On the pillar above the pulpit is a delineation of the Redeemer on the cross—by *Vandyke*.

6. On the opposite pillar is—the nativity of Christ, a copy of the famous design by *Annibal Carrachi*.

7. The Saviour under the contumelious outrages of the soldiers. Matthew xvii. 27—31—by *Fluret*.

8. The day of Pentecost. Acts of the Apostles ii.—by *Vignon*.

9. The Holy Family—by *Blanchard*.

There are also a portrait of St. Anne, and the Holy Family, both copies.

The perspective view of the Roman Catholic Church was taken from the upper entrance of the Barracks, fronting Buade street. On the left is a part of the south wing of the Seminary, near the principal avenue, surmounting the corner of the Market-house. In the foreground is the appearance of the Market-place in the morning, with a cow drawing a sled, laden with wood, by the horns, and a dog harnessed to its diminutive

cariote. On the right is the whole length of Buade street, terminated by the top of the distant hill, on the east side of the river, skirting the horizon.

III. PRESBYTERIAN CHURCH.

THIS is an unadorned edifice, fronting on St. Anne street, with a steeple. The view was taken to the westward. On the right are the houses near the Gaol, and on the left are part of the street, the spire of the Episcopal Church, and the trees within the inclosure.

IV. TRINITY CHAPEL.

THE front of this building on St. Stanislaus street is delineated. Its interior is neat and convenient, with an Organ of superior quality.

V. ST. JOHN'S CHAPEL.

THIS place of worship stands in St. Francis street. It is without ornament, and occupied by Congregationalists.

VI. METHODIST CHAPEL.

THIS house is opposite to the east end of Angel street, and is perfectly plain. The society are united with the English Conference.

VII. ROMAN CATHOLIC CHURCH OF THE CONGREGATION.

THIS is a modern edifice, erected on the west end of the Esplanade. It comprises no object inviting peculiar attention.

VIII. ROMAN CATHOLIC CHURCH IN THE LOWER TOWN.

THIS building fronts on the Market-place, and was built in consequence of a vow made during the seige of Quebec, in 1690, undertaken by an English force under the command of General Phipps.

It is surmounted by a spire, but contains no peculiarity meriting a stranger's notice. The following tale is part of its traditional history. This Church was nearly desolated by fire during the campaign of 1759. At that period, it contained a fine painting which represented a town in flames, with an inscription which announced, "that in the year 1711, when Quebec was menaced with a seige by Admiral Walker and General Hill, one of the Religieuses prognosticated that the Church and the Lower Town would be destroyed by the British in a conflagration before the year 1760." It is stated, that this circumstance made a powerful impression upon all orders of the people. The fact seems to be so well attested, that it constitutes one of those historical anomalies, which preclude satisfactory explanation.

IX. ROMAN CATHOLIC CHURCH IN ST. ROCH'S SUBURBS.

THIS is a spacious and handsome edifice, of recent construction, pleasantly situated, and contains a considerable variety of decoration. In the Sacristy are portraits of Pope Pius VII. and of the late Roman Catholic Bishop of Quebec. The Church is adorned with several original pictures.

1. The Annunciation of the Angel Gabriel to the Virgin Mary. Luke i. 26—38—by *Restout*.

2. The Holy Family—by *Colin de Vermont*.

3. The Resurrection of the Lord Jesus Christ—by *Chalis*.

4. St. Nicolas—by *Vignon*.

5. St. Roch and a Virgin—by *Blanchard*.

This view was taken from the eastward.

X. PROTESTANT BURYING GROUND.

THIS dormitory of the dead is situated in St. John's Suburbs, on the Main street, about one quarter of a mile from the gate. Attached to it is a small building, appropriated for the obsequies prior to the interment of the corpse, and for public worship according to the rites of the Episcopal Church on the evening of the Lord's day.

XI. PRIMITIVE METHODIST CHAPEL.

THE house at the corner of St. Anne and Garden streets was formerly used as a Theatre. In the year 1825 the upper part was fitted up as a commodious place of worship for the Primitive Methodists, but it is now unoccupied.

XII. CHURCHES AT POINT LEVI.

THE Roman Catholic Church contains nothing either externally or in the interior which attracts regard.

The Episcopal Church is a neat specimen of similar modern structures in England. Its imposing site renders it a beautiful ornament of the landscape. In the perspective, its side aspect is delineated.

XIII. THE SEMINARY.

ADJOINING the rear of the Catholic Church in the Upper Town stands the Seminary, a capacious superstructure of stone, in the form of a parallelogram, having three sides of more than seventy yards in length, forty feet broad, and three stories high ; to which is added a wing of four stories on the north-east, of about fifty yards long, and nearly as many feet deep. It is encircled by a large garden, walled in, measuring in the whole about seven acres, and which extends to the Ramparts. All the necessary convenient apartments are comprised in the building, adapted both for the recitations of the Pupils,

and the residence of the Professors. The course of instruction is subdivided into the Grand and the Petit Seminaire, and the institution was established in the year 1663. It was originally designed solely for the education of Ecclesiastics, but this exclusive system was long since abandoned, and it is now open for the reception of all those who comply with its terms and regulations.

Attached to the Seminary is a Museum, containing a considerable variety of natural curiosities, which may be viewed upon application to the Professor of Mathematics and Philosophy.

On the left of the grand entrance from the Market-place is the vestibule of the Chapel, a plain, but neat edifice; in which the visitor beholds the following pictures enumerated in order from the entrance, pursuing the survey on his right-hand round the interior. They are all specimens of the French School.

1. The Saviour and the Woman of Samaria at Jacobs' Well near Sychar. John iv.—by *Lagrenée*.

2. The Virgin ministered unto by the Angels, who are represented as preparing the linen clothes for the child Jesus—by *De Dieu*.

3. In the wing, a large figure of the Saviour on the cross, at the precise moment described by the Evangelist. John xix. 30.—by *Monet*.

A smaller figure is suspended on each side.

4. At the entrance—The Egyptian Hermits in the solitude of Thebais—by *Guillot*.

5. Next the wing—The terror of St. Jerome, at the recollections of a vision of the day of judgment—by *D'Hullin*.

6. The ascension of the Lord Jesus—by the *Champagnes*.

7. The Saviour's sepulchre and interment—by *Hutin*.

8. Above the altar—The flight of Joseph to Egypt, Matthew ii.—by *Vauloo*.

Immediately above is a small oval delineating two Angels—by *Le Brun*.

9. The trance of St. Anthony, beholding the Child Jesus—by *Panocel d'Avignes*.

10. The day of Pentecost. Acts ii.—by the *Champagnes*.

11. Peter's deliverance from prison. Acts xii.—by *De la Fosse*.

12. At the entrance of the wing—another view of the Hermits of Thebais—by *Guillot*.

13. In front—The Baptism of Christ. Matthew iii.—by *Claude Guy Hallé*.

A small figure is also suspended on either side.

14. St. Jerome writing—by the *Champagnes*.

15. The wise men of the east adoring the Saviour. Matthew ii.—by *Bourieu*.

To an observer the Chapel appears light, and the whole interior as a *coup d'œil* from the entrance is interesting and attractive.

XIV. THE URSULINE CONVENT.

THIS Nunnery and the inclosed land adjoining it, belonging to the Religieuses, its inhabitants, occupy a large space, which is surrounded by a high barrier of stone, and comprises an excellent and fertile garden—

the whole area includes about seven acres. The institution was founded in 1639, under the patronage of Madame de la Peltrie, a very early period after the primary settlement of the city, expressly to promote female education among the colonists, and the edifice which is built of stone is two stories high, forming a square of nearly thirty-eight yards in length, with a depth of about as many feet, being of ample capacity and convenience to accommodate the residents—but the outside combines no attraction. At the east projection, immediately upon Parloir street, is the Chapel, nearly one hundred feet in length, but not quite one-half that measure broad—the interior of which is highly decorated. The Convent itself is internally neat and interspersed with ornate specimens of a refined taste. Persons of distinction only are now admitted to inspect the domestic apartments. The institution includes the Superieure, forty-two Religieuses Professes and seven Novices—the chief employment of whom is the tuition of a large number of girls in common knowledge, and other qualifications. They are more rigid and retired than the inmates of any conventual institution in Canada.

Different ingenious specimens of needlework are always for sale in the office on the left above the door—and the Chaplain will grant strangers permission to view the church upon application to him. In that edifice are the following paintings.

In the anti-room are several small subjects—the death of St. Francis at Goa—and portraits of Popes Pius VI. and Pius VII.—Some minor pieces are hung around the south end of the Chapel.

it
of
pri-
ale
h is
e of
out
nce
nes
oon
in
the
elf
ens
ow
ti-
es
of
on
re
al

re
—
w
e

h
-
e



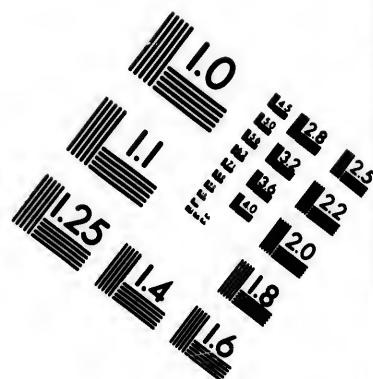
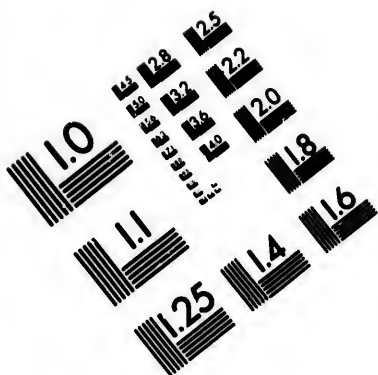
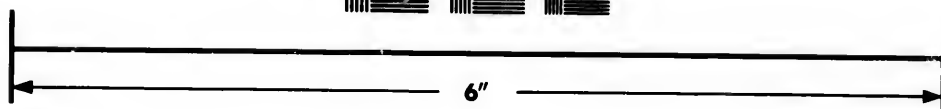
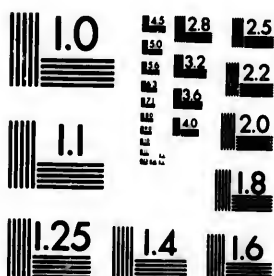


IMAGE EVALUATION TEST TARGET (MT-3)



Photographic
Sciences
Corporation

23 WEST MAIN STREET
WEBSTER, N.Y. 14580
(716) 872-4503

10
E 28
E 32
E 36
E 22
E 20
E 18
1.6

10
E 28
E 32
E 36
E 22
E 20
E 18
1.6



CASTLE, ST LEWIS.



ST ROCH'S CHURCH.



GENERAL HOSPITAL.

The Altars are highly ornamented, and the emblematic figure on the roof gives a light and airy appearance to the whole.

1. Over the Grand Altar is—The birth of Immanuel. Luke, Chapter ii.—by *Vigneau*.

2. Above the eastern Altar is—The Saviour exhibiting his heart to the Religieuses—by *Le Sueur*.

3. On the right. The Saviour taken down from the cross. A Mater dolorosa—by *Vandyke*.

4. Opposite. The Virgin Mary and the young Child. Pursuing his right hand from the pulpit, the visitor beholds in succession—

5. A cargo of Christians captured by the Algerines—some experiencing different tortures, with their ransomers, from bondage, paying for their release—by *Restaut*.

6. Louis XIII. of France, and the first royal Governor of New France, with a tablet of the then existing Bourbon Family. An allegorical representation of Canada.

7. Mary's visit to Elizabeth. Luke i.—by *Collins*.

8. At the end, is the representation of Jesus Christ sitting down at meat in Simon's house, Luke vii.—by *Champagne*. This painting is of high merit and great value.

9. Salome presenting the head of John the Baptist to Herod and Herodias. Mark vi.

10. The first picture on the western wall is—The miraculous draught of fishes. Luke v.—by *De Dieu*.

11. The parable of the wise and the foolish virgins; Mathew xxv.—*Italian*.

12. A full length portrait of the Saviour, delineated in the attitude of preaching—by *Champagne*.

The paintings within the Convent cannot be inspected. From the Chapel being generally closed, except upon the days of ecclesiastical commemoration, many visitors have been deprived of the opportunity of viewing the interior; to obviate this defect, they should recur to the Chaplain, whose apartments are on the right of the entrance, and who will oblige strangers by admitting them to the interior of the edifice.

XV. THE HOTEL DIEU.

THESE premises include a large proportion of the northern part of the interior of the city—commencing from the gate of the burial ground on Couillard street, and extending to Palace street, with a wall on the north, parallel to the fortifications; the whole space occupying about twelve acres. This Institution was commenced in 1637, under the auspices of the Duchess of Aiguillon, and was consecrated to the reception and care of the sick, who are indigent and distressed. It is a capacious edifice, the longest portion of which extends nearly one hundred and thirty yards by seventeen in depth, and three stories high. On the north-west side from the centre, a range is erected two stories high, fifty yards in length, and nearly as many feet broad, plain and unadorned. This wing is appropriated for the patients; the upper story of which is occupied by the females. All proper attendance

both from the Nuns and Physicians, with every necessary comfort, is gratuitously administered. The annual expenditures are considerable ; and although the revenues are ample, yet from the munificence of the relief which is afforded to the numerous strangers in penury and affliction who arrive in Quebec, the Provincial Parliament occasionally aid the liberality of the Institution by donations from the public Treasury.

In the convent the Sisterhood reside, who now include the Superieure, thirty-three Religieuses Professés, two Novices and one Postulante. The regularity, neatness and purity with which the establishment is conducted, and the solace of the wretched who find refuge in this hospitable domain, are highly exemplary.

The increasing commerce of the port, and the augmenting number of emigrants who annually arrive during the navigable season, have rendered additional accommodations requisite ; in consequence of which a new edifice is proposed to be erected under the sanction of the constituted authorities, and at the public expense, particularly for the benefit of Europeans who are sick when they arrive, and mariners with disease and fractures.

The Church of the Hotel Dieu, externally, is perfectly plain, and the interior is little adorned. The paintings may be examined upon application to the Chaplain.

There is a variety of small pictorial designs in the adjacent rooms—four paintings of the most momentous events in the Redeemer's history, are suspended in the apartments of the sick—with portraits of the Apostles decorating the walls of the Church ; but they all are copies.

The following pieces are original :—

1. The Nativity of Christ, Luke ii.—by *Stella*.
2. The Virgin and Child—by *Coypel*.
3. The Vision of St. Therese—by *Menageat*.
4. St. Bruneau wrapt in meditation—by *Le Sueur*.

A painting in the Chaplain's sitting room merits notice, not for the artist's workmanship, but for the subject, as illustrative of the perils and sufferings of the original European settlers of Canada. In the winter of the year 1649, the Indians assailed the Chapel of the Jesuit Missionaries at Three Rivers. The Society at that period numbered seven members. Two made their escape, one of whom was subsequently found in the woods congealed in a devotional attitude, and the other was discovered prostrate, frozen on the ice of one of the rivers.

The Priest Daniel and his brother were shot, as they fled out of the Chapel then in flames. Another of the fraternity, named Jog, was mutilated by the loss of his fingers in succession ; and with his wrists fettered, kneeling down, was butchered by two of the Indians, who cleaved his head with their battle axes.

The old Priest Brebœuf and a younger Missionary, Lallemant, were reserved for still more excruciating and protracted tortures. They were tied to two stakes, separated by a short distance. The junior was literally burnt piecemeal, by the application of ignited pine sticks successively brought into immediate contact with the various parts of the body, the most distant from the vitals. In the intensity of his corporeal agonies, just before the mortal frame succumbed to the ingenious and infuriated malevolence and cruelty of the barbarians, he addressed

Brebœuf, "Ah! I have scarcely a grain of faith left"—to which his fellow-sufferer magnanimously replied—"one grain of true faith in Christ is enough to remove all this mountain of anguish and misery." The senior Priest had long endeavoured to tame these savages, but in vain. They astonished him by saying, "you have come a long distance you tell us, after the manner of John the Baptist, to baptize us in cold water, we will baptize you with hot water."

To execute their marvellously inhuman scheme, they fastened a cross pole between the stakes to which the two Priests were bound, and hung on their large pots to boil the water. A refinement of almost unparalleled merciless infliction was superadded. They strung on an iron hoop or ring several axe heads, and placed them in the fire; when the axes were red-hot, they cast the ring over Brebœuf's head, so that thus suspended, his breast and shoulders were corroded by the igneous axes, to his unutterable torment. When the water was ready, two of the Indians with large shears cut off large pieces of flesh and made other deep incisions in the arms, legs, &c. to the bones—as soon as a number of these gashes were made in various parts of the frame, one of the savages effused a kettle of boiling water over the agonized Brebœuf; and thus in a continual alternation of relentless butchery and scalding, combined with triumphant yellings at their novel mode of Algonquin baptism, they ceased not their successive tortures, until, life being extinct, the remains of their victims were transferred to be consumed in the same fire.

XVI. GENERAL HOSPITAL.

THE establishment thus denominated is situated nearly a mile west of the fortifications, on the banks of the river St. Charles, and was commenced in the year 1693 by the then Roman Catholic Bishop of Quebec. Its principal front is delineated in the perspective view, with the circumjacent scene. Mr. St. Valliere instituted this Convent expressly to relieve invalids and persons afflicted by disease. It is a capacious structure—a parallelogram, of nearly equal sides, seventy-six yards in length, and eleven yards deep—and on the south-west, a wing projects more than forty yards, by fifty feet broad. The uncircumscribed principle upon which the Institution was founded necessarily introduces a great number of patients, so that it is ordinarily occupied by the children of sorrow in all its diversified exhibitions. To superintend the Hospital those are the Superieure of the Convent, forty-five Religieuses Professes, two Novices and two Postulantes, all of whom are amply accommodated ; and besides sufficient and convenient apartments for their varied avocations. The comfortable economy of this Hospital is very regular, and all possible alleviation is tendered to the disconsolate, pained and enfeebled inmates.

Near the principal building is a separate house appropriated expressly for persons insane. Attached to the Convent is a neat and convenient church—but it contains nothing peculiarly distinctive in character except its ornaments. The paintings are copies only of the originals in the other churches and chapels.

As this edifice is in strict parlance dedicated to the ordinary purpose of an Hospital, and as its occupants are generally numerous, the annual expenditures amount to a large sum ; which are defrayed by Parliamentary donations—by the rent of landed property appropriated expressly for its support—and by the proceeds of the labour which the Nuns devote particularly to ornamental trinkets, and ecclesiastical embellishments.

Persons of taste will be pleased with a view of St. Roch's Church—and philanthropic visitors of Quebec will be gratified by a survey of the Hotel Dieu and the General Hospital. In beholding the wards allotted to the sick and the impoverished, they will witness the exact order and economy with which the advantages of those charitable Institutions are regularly and faithfully administered.

CIVIL EDIFICES.

I. CASTLE OF ST. LEWIS.

THE Castle of St. Lewis is the residence of the Governor ; and from its peculiar situation, it constitutes one of the principal objects of notice, in all views of the city, from Beauport easterly to the Chaudiere. At its base the rock is nearly two hundred feet in perpendicular height, and the building on the east is sustained by strong stone buttresses, on which is laid a wide balcony, extending along the whole length, and whence the beauties of the northern and eastern landscape are beheld. The building is of three stories, about fifty-four yards in length and fifteen yards deep, with small wings. Since the last repairs in 1809, its interior is conveniently arranged, and its superior apartments are tastefully decorated. To it are attached all the buildings suitable and convenient to the dignified station of the Provincial Executive Chief.—The Garden is on the south-west of the Castle—in length nearly thirty poles, and in breadth from the wall to the Rue des Carrieres about seventy yards. On the opposite side of the street, in the front of which stands the monument to Wolfe and Montcalm, is a lot, one hundred yards long by eighty-four broad, which having been designed as a public walk, was formally planted with trees to shade the pedestrians—at present, however, it is appropriated as an additional garden for the service of the

Governor. The Castle, in consequence of its partial exclusion from the sight by the gloomy walls of the buildings in front, loses much of its impressiveness and attraction. By a superficial observer, who merely passes along the Place d'Armes, the Governor's residence is scarcely noticed. This part of the city would be much more beautiful in aspect, were the defacing incumbrances, which give a dreary appearance to the whole eastern side of the Place d'Armes, removed—then the Castle would be displayed in an imposing view to general contemplation.

II. THE PARLIAMENT HOUSE.

THIS edifice was formerly erected for the Catholic Bishops of Quebec; who at present reside in the east end of the Seminary. It commences at the Prescott Gate on Mountain street and extends north-east forty yards, thence it is prolonged, almost at a right angle towards the battery, nearly fifty yards—being about thirty-five deep, and of different elevations. The wing now occupied by the House of Assembly was formerly a Chapel, sixty-five feet long, and thirty-five in breadth. Adjoining the front on the south is the lobby and wardrobe—the library and the Speaker's chamber succeed—below is the bureau of the Provincial Secretary—and the lower part of the south wing is occupied by the various officers and committees of the House.

The upper story is appropriated to the Legislative Council, whose chamber for their sessions is on the north

end—the whole suite of apartments round to the gate is used by the committees and clerks of the Council.

To a stranger, the exterior of the edifice conveys no idea of the important purposes for which at present it is designated, and it is indubitable that the Provincial Parliament are by no means conveniently accommodated, for the discharge of the public business to which they are appointed. An entire demolition of the whole dilapidated structure is requisite—while the erection of a rotunda for the Executive Government, with a wing for each of the Houses of Parliament, and their offices, library, committees, &c. to observers ascending the river and other posts of inspection, would form a magnificent addition to the exterior view of the city, and would be not less agreeable to the Members and the public, than it would be beneficial in the facilities, which it would afford to all persons for the execution of their duties.

The inconveniences and restricted space of the present House, especially during the Parliamentary sessions, are such that a more capacious and roomy edifice is imperatively demanded ; and this necessity must increase with the continual additions to the population, the consequent enlargement of the delegates to the Assembly, the accumulating business of the Members, the augmented number of necessary officers, and the multiplied attendance of persons from all parts of the Province, appealing to the Parliament for Legislative sanction to the diversified inventions and improvements in commerce, agriculture and education, which the modern spirit of enterprise is constantly generating.

III. THE COURT HOUSE.

THE end of the Court-House stands where a Church was formerly erected. It belonged to the order of the Recollets, of whom none now remain in Canada. Those ancient structures, the Monastery, Chapel, &c. constituting a large establishment, were consumed by fire in 1796, and within the garden, the yard of the Episcopal Church was also included. The Court House is to the south of the Episcopal Church, on the opposite side of the Place d'Armes from the Castle of St. Lewis, with a plain and uniform, but pleasant front on St. Louis street. It is a superstructure of stone, in length about forty-five yards, and in breadth nearly as many feet. The whole middle part of the Court House on the lower floor is occupied by the Magistrates for their Quarter Sessions; on each side of which is a wing extending to a considerable additional depth. An arched vestibule conducts on either side to a passage, from which there are avenues to all the Court rooms, and law offices. The building exhibits no ornament; but it is externally neat, and the interior conveniences are amply sufficient for all the purposes for which it was erected.

IV. THE PUBLIC OFFICES.

THE various offices connected with the Civil Administration of the Government, occupy the spacious edifice at the corner of the Place d'Armes and Fort street, formerly known as the Union Hotel, and from its vicinity

to the Castle and the Parliament House, combined with its great conveniences, it is excellently adapted for the objects to which it is applied. The whole front on the first story contains the Museum of the Society for Promoting Literature, Science, Arts and Historical Research in Canada.

V. THE JAIL.

THIS is a modern building, of the same materials, a beautiful grey stone, and of similar exterior appearance as the Court House. It is located in an airy elevated situation, and well adapted for its design. It is fifty-six yards in length, fronting on the north-east, sixty-eight feet in breadth, with a spacious yard for the use of the prisoners, and three stories high, and except one excrescence is a pleasing architectural subject of examination. Unless it is supposed, and if so, without doubt, the impression is erroneous, that the continual sight of the iron machinery, whence malefactors are suspended at their execution, produces an intimidating effect, it should be removed, to be temporarily affixed when the law requires the painful infliction of its highest condemnatory punishment. As it now is constantly in view, it perfectly deforms the front of the building, which is not otherwise repulsive, and unnecessarily excites revolting emotions, incongenial with the grateful sensibilities, which are realized by strangers, who roam through the city to scrutinize its novel objects.

with
the
the
Pro-
rch

, a
nce
ted
-six
ght
the
es-
on.
the
the
eir
be
res
sh-
tly
se
s,
a-
ze



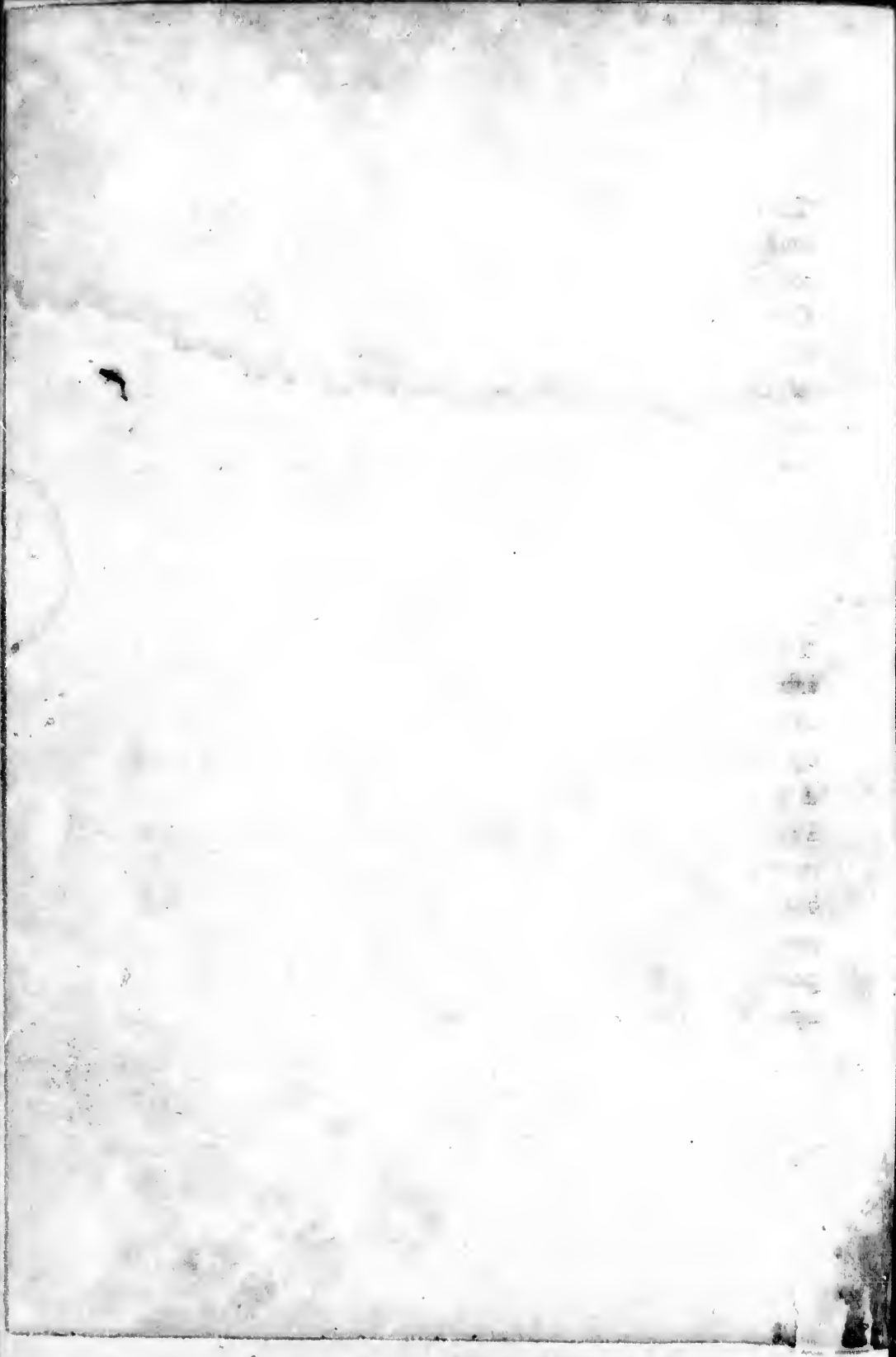
ST. JOHN'S CHAPEL.



COURT HOUSE.



METHODIST CHAPEL.



T
a
so
G
fi
of
J
th

T
is
of
by
A
14
p
b
n
p
u

VI. PUBLIC WAREHOUSE.

THIS spacious building was finished in the year 1821, and is erected on the King's wharf, being appropriated solely for the reception of the stores belonging to the Government. It measures in length two hundred and fifty feet, with a considerable depth. It is constructed of the same species of stone as the Court House and Jail, but neither the front towards the river, nor that on the Cul de Sac exhibits any external ornament.

VII. THE INTENDANT'S PALACE.

THIS ancient edifice used by the former French Administration is now in complete decay. After the surrender of Quebec to the British army in 1759, it was deserted by the new Governors. It was occupied by General Arnold and his troops during the blockade of the city in 1775, but the Garrison eventually drove them from that post by bomb-shells, which nearly destroyed the whole building. It was situated immediately under the wall near Palace Gate, and now is only worthy of notice, as proclaiming the truth of our poet's splendid epitaph upon all terrestrial magnificence.

“ Like the baseless fabric of a vision,
 ————— the gorgeous palaces,
 ————— dissolve ;
 And like an unsubstantial pageant faded,
 Leave not a wreck behind.”

MILITARY EDIFICES:

I. THE CITADEL.

THIS stupendous fortress circumscribes the whole area on the highest part of Cape Diamond, and is intended not only to accommodate the Garrison as a residence, parade, &c. but also to include all the materiel of war. It perfectly commands the city and river St. Lawrence ; and when completed will be not only the most powerful specimen of military architecture on the western Continent, but also a rival of many of the renowned works in the Netherlands. All attempts to describe the Citadel in its present unfinished state would be nugatory. An inspection of the Map will illustrate its extent and course—it will circumscribe about forty acres of land, including its embankments. Visitors cannot be admitted without a ticket.

II. THE MARTELLO TOWERS.

THESE are four circular forts, which are situated at the northern extremity of the Plains of Abraham, about half a mile in advance of the exterior grand wall of the fortifications. They are numbered from the river St. Lawrence to the General Hospital, and guard the approaches to the city on the south and west. They are nearly forty feet in height, with a base diameter almost equal ; and

the exterior wall is of ample strength to resist a cannonade. The platform on the top being armed with the largest guns, these Towers constitute a powerful additional defence to the fortified barrier of the city. They are situated in a line nearly direct, each about one-third of a mile distant from the other—and even if captured by an invading force, would prove a very insecure and probably an untenable post to the victors—as the walls on the side next to the city, are comparatively so weak, that the Towers could easily be demolished by the battery from the Garrison.

III. THE BARRACKS.

Of these military residences, there are three grand divisions in the city; the principal of which is on the west side of the Market-place in the Upper Town, formerly the Jesuit's Monastery. It is a capacious quadrangular edifice of seventy-five yards by sixty-seven, encircled by a wall which measures on the north the whole length of Fabrique street, and more than two hundred yards on St. Anne street. The area inclosed, and which is now appropriated for the parades and exercise of the troops, was formerly a garden and parterre, much admired for their horticultural beauty and elegance.

In St. Louis street is also an extensive range of buildings, appropriated for quarters, the army offices, and the military hospital.

The Artillery Barracks adjoin Palace street, near the gate. The superstructure is of stone, extending westerly,

two stories high, and measures one hundred and ninety-two yards in length, by forty feet deep. Besides the residences of the officers and men—this building combines the store-houses and offices connected with the Ordnance Department—and also the armoury, which contains an immense number of muskets, swords, pistols, cutlasses, &c. The arms are kept in a state of admirable cleanliness and polish, in constant repair, and are always ready to be issued, should any emergency require the equipment of the militia. Those visitors who are anxious to inspect this magazine of warlike implements, can be gratified, if they are accompanied by a resident citizen.

IV. THE RAIL-WAY, OR INCLINED PLANE.

THIS effort of mechanism of about five hundred feet in length, always attracts attention. It was the only efficient mode by which the enormous masses of stone requisite to complete the Citadel, could have been conveyed to the summit of the Cape, with facility and expedition. The steps amount to nearly six hundred, and are not only passed up and down by the workmen—but sometimes are ascended and descended to determine the agility and strength of the contending claimants for superior speed. Amateurs of this muscular and perilous amusement affirm, however, that although the victory may be achieved against competition, and against time, the climber is not compensated by his vague honor for his subsequent fatigue and lassitude.

V. THE MONUMENT.

It is not a little surprising that nearly seventy years should have elapsed and no energetic attempt have been made to preserve in prominent memorials, the recollection of the two military Chiefs who commanded the opposing armies in that battle which transferred Canada to the British Empire, and in the midst of which contest, both of them received their mortal stroke.

At the corner of Palace and St. John streets, stands a wooden statue of Wolfe, in his military costume ; and as persons testify from traditional statements, it retains much similitude to that general's countenance.

Of Montcalm, the chief memorial is the house on the battery, the last building towards Palace gate, which was his residence, and still bears his name.

To the honor of those commanders a Monument is now erected, of which conspicuous ornament of the city, especially as beheld from the water—the vignette is a graphic delineation. To the top of the basement, the Monument is thirteen feet in height—and thence to the bottom of the pillar is seven feet three inches. The pillar measures forty-two feet, eight inches, and the cap two feet one inch—thus from the ground to the apex, the altitude is sixty-five feet. At the base of the pillar, the sides are six feet by four feet eight inches, gradually tapering to the cap, where the sides are contracted to three feet two inches, by two feet five inches. (4)

The Monument displays the following inscriptions:—

MORTEM
VIRTUS COMMUNEM
FAMAM HISTORIA
MONUMENTUM POSTERITAS
DEDIT.

HANC COLUMNAM
IN VIRORUM ILLUSTRUM MEMORIAM,
WOLFE ET MONTCALM,
P. C.
GEORGIUS COMES DE DALHOUSIE:
IN SEPTENTRIONALIS. AMERICÆ PARTIBUS
AD BRITANNOS PERTINENTIBUS
SUMMAM RERUM ADMINISTRANS;
OPUS PER MULTOS ANNOS PRÆTERMISSUM,
QUID DUCI EGREGIO CONVENIENTIUS?
AUCTORITATE PROMOVENS, EXEMPLO STIMULANS,
MUNIFICENTIA FOVENS.
A. S. MDCCCXXVII.
GEORGIO IV. BRITANICARUM REGE.

LITERATURE.

I. SOCIETY FOR PROMOTING LITERATURE, SCIENCE, ARTS AND HISTORICAL RESEARCH IN CANADA.

IN the year 1824, under the auspices of the late Governor, an Institution was organized, entitled the Literary and Historical Society of Quebec, the Members of which were chiefly gentlemen of high official rank in the Province.

Anxious to produce a literary and scientific stimulus among persons professionally qualified to extend the influence of works of genius and taste, in the year 1827, a number of gentlemen associated themselves under the designation of the Society for the Encouragement of Arts and Sciences in Canada.

Beneficial results have already flowed from those Societies. A considerable spirit of emulation has been elicited, and they now combine an efficient body of active members, harmoniously co-operating to disseminate the varied intelligence to which their efforts are directed.

These two societies anticipating that their joint energies would be more efficacious than their separate exertions, were lately consolidated into one institution under the above title; thus coalescing all that can give stability and impulse to their important pursuits. For the evolution of native genius, the extension of knowledge

and the interests of philanthropy, this society will soon exercise a commanding influence in the Province.

Their Museum is open for the reception of visitors, in the building, corner of Fort street, occupied for the public offices of the Government, and persons of taste and science will be gratified by an inspection of its varied contents.

It already comprises about fifteen hundred mineralogical and geological specimens from foreign countries—about two hundred of the same genera from Lakes Huron and Superior—with a diversity of native samples.

There are also a few subjects of Natural History, in ornithology and zoology—seventy different indigenous woods—twenty mathematical models—a bowl from Her-
culaneum—some entomological species—a rich botanical variety—a select scientific library, including part of the original Journals of the House of Commons during the latter years of Charles I. supposed to have been brought from England to Connecticut by Goff or Whalley, who were two of the Judges on the trial of that King. The collection also comprises a number of conchological specimens, both provincial and exotic.

The room is adorned with paintings, according to the ensuing catalogue.

EAST END.

In the lower corner.

1. St. Sebastian—*Vandyke*,
2. A Battle between ancient Cavalry.

*In the middle compartment.***3. The School of Athens—Robert.**

This painting represents in characteristic attitudes and employments, the philosophers, artists, amateurs and patrons of the sciences enumerated in the following nomenclature. The anachronisms must be overlooked. The features are said to have been delineated from antique medallions. Commencing from the left, in the elevation, are Alcibiades—Socrates—Nicomachus, the Father of Aristotle—Franciscus della Rovere—Terpander—Alexander the Great, Juvenis—Plato—Aristotle—and Cardinal Bembo.

Underneath, in the second row of portraits, are—Aspasia—with Empedocles immediately below—Pythagoras—Epictetus—Diogenes—Frederic Gonzaga—John Casa Antistes—Zoroaster crowned is displayed only by the back of his head, his face being turned towards Raphael Urbinus—and on the extreme right is Peter of Prussia.

In the foreground are Epicharmus—Archytas—and Averroës the Arab. The figure beneath Frederic Gonzaga, portrays Bramantes the architect, the biographer of Archimedes.

4. A Landscape—Poussin.**5. The visit of the Virgin Mary to Elizabeth. Luke i. 39, 40—Rubens.**

This picture contains a remarkable peculiarity. The portraits are family resemblances. Zechariah is the likeness of the artist himself—his wife represents Elizabeth—his daughter is introduced as the Virgin—and the attendants were his domestics.

6. A Landscape—Poussin.

In the right corner.

7. David with the head of Goliath. I Samuel, xvii.
54—*Puget.*
 8. A battle between ancient Cavalry.
-

SOUTH SIDE OR FRONT.

Beginning at the left corner.

9. A Magdalen—*David.*
 10. Pride—*L'orgueil.*
 11. St. Bartholomew.
 12. Despair—*L'emportement.*
 13. Vocal Music by candle light—*Chant de nuit.*
 14. Decapitation of Longer—*Allies.*
 15. Avarice—*L'avarice.*
 16. Drunkenness—*L'ivrognerie.*
 17. Peter denying the Saviour. Mark xiv. 66—72—
Reniement de St. Pierre—Italian.
 18. Idleness—*La paresse.*
 19. Daniel in the den of Lions. Daniel vi.
-

WEST END.

Over the left door.

20. St. Catharine de Sienne.

At the door.

21. St. Francis d'Assise—*Le Susur.*

In the middle.

22. The Lord encircled by Angels—*Poussin*.
 23. St. Anthony administering the mass—*Champagne*.
 24. A Landscape—*Vieux Moulin*.
 25. Moses drawing water for the sheep, kept by the seven daughters of Jethro. Exodus ii. 16—21.—*Delve*.
 26. A Landscape—on the left the monastery, where is imprisoned the father of the female in front—*Le Frere Marin insulté—Vernet*.
 27. The Saviour pronouncing the Beatitudes. Matt. v. 3—12—*Le Brun*.
 28. A Hermitage—*Wilson*.

At the right door.

29. St. Cecilia—*Le Dominiquin*.

Over the right door.

30. Judith delivering the head of Holofernes to her servant. Judith xiii. 11.

NORTH OR ENTRANCE SIDE.

On the left of the door.

31. The adoration of the Magi. Matthew ii. 1—12.
 32. The presentation of the Virgin Mary—*Feti*.
 33. Roman Antiquities—*Robert*.
 34. Card-playing on the ground.
 35. An Italian Landscape—*Vue d'Italie*.
 36. The death of Procris.
 37. The worship of the Shepherds. Luke ii. 15—18.

38. The Purification of the Virgin Mary. Luke ii, 22—24.—*Feti.*

AT THE ENTRANCE.

In the left niche.

39. Peter's passing shadow healing the sick. Acts v. 15—*Juvenet.*

In the right niche.

40. Peter raising Dorcas to life. Acts ix. 39—41—*Juvenet.*

On the right of the door.

41. Jesus in the sepulchre—Mater dolorosa—*Le Brun.*

42. The Baptism of St. Augustine—*De Bologue.*

43. Elijah ascending in the Chariot of Fire, with his falling mantle. Elisha is represented, as uttering "My Father, my Father," &c. II Kings ii. 11—14.—*Plurtorst.*

44. A Portrait—*Corregio.*

45. The Nativity—*Coypelle.*

46. An ancient head.

47. The Holy Family—from *Raphael.*

48. A Hermit—*Le Solitaire en meditation—David.*

49. The resurrection of Christ—*Coypelle.*

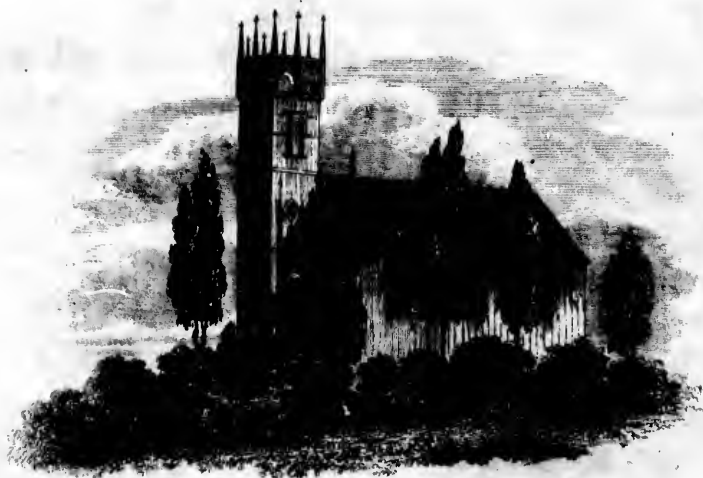
50. Game.

51. View of Venice—*Italian.*

52. View of Venice—*Italian.*



CHAPEL OF THE HOLY TRINITY.



EPISCOPAL CHURCH.

Point Levi.

As J. Smith's Son's Sculptor.

53.

xxi. 1

Of

inten

tation

xxvi.

Thes

An

Plate

whic

at P

Th

engr

famo

of th

the r

out i

mett

com

S

incr

time

coll

Pro

Res

“A

fow

val

53. Hagar with Ishmael in the wilderness. Genesis xxi. 14—20.

Other paintings will also be introduced, and it is intended to add the Port Folio containing the representation of Jesus and the Apostles at the Passover, Matt. xxvi. 19—29, as depicted by *Leonardo de Vinci*.—These engravings contain the bust, large as the life.

Amateurs may also inspect the massive volume of Plates, exhibiting the whole series of capital pieces, which formerly decorated the renowned Orleans Gallery at Paris.

There is also a rich diversity of other European engravings, among which is, The admirable Face by the famous artist Mellan, which was finished by one stroke of the graver, commencing at the terminating point of the nose, and revolving in continuous enlargement, without intermission, until the whole countenance, with the motto underneath, “*FORMATUR UNICUS UNA*,” was completely executed.

Strangers who visit Quebec either for recreation or an increase of knowledge—will be amply repaid for the time devoted to an exploration of the various subjects collected together in the Museum of the Society for Promoting Literature, Science, Arts and Historical Research in Canada.

II. CHASSEUR'S MUSEUM.

“Ask now the beasts and they shall teach thee, and the fowls of the air and they shall tell thee.” This is a valuable collection, consisting chiefly of indigenous spe-

imens, and combines a rich variety of ornithological and zoological subjects, which includes the different genera and species, that have hitherto been discovered in these Provinces.

Amateurs of the works of nature will be gratified by a survey of this establishment, as "the birds of the air and beasts of the field," all apparently disclose the beauty and freshness of actual vitality.

III. EDUCATION.

IN addition to the Roman Catholic Seminary, there are in Quebec, the Royal Grammar School, and the Classical Academy, in which are taught the Latin and Greek languages. Of all the subjects usually comprehended in an extended English education, there are excellent tutors. The National School—the Quebec Education Society—and the British and Canadian School are chiefly elementary—the two former are more restricted—but the third is a Lancasterian School, admitting children upon the broadest principle of philanthropy. There are also four Sunday Schools in the city, which produce very beneficial results upon the minds of youth—nevertheless it must be admitted, that in reference to the state of education for boys, and especially for girls, "there remaineth yet very much land to be possessed."

IV. BOOKS.

THERE are six Book-stores in the city, but their business is more in stationary articles, than printed volumes.

The Garrison possess a library which is confined to the military. There is also a Circulating Library, which is composed chiefly of miscellaneous light reading. The Quebec Library, as it is denominated, contains several thousand volumes, and comprises a great variety of standard works, both English and French. Visitors may very profitably devote a morning to the survey of the books belonging to this society.

V. TYPOGRAPHY.

WITHIN the city are three Printing Offices, which are employed chiefly for the public business, hand-bills, and upon newspapers. Of these four at present are issued. The Quebec Gazette was commenced in the year 1764, and for some time was promulged only on Thursday, it has however for many years been published twice weekly. The Mercury is also distributed twice per week. The new or Official Gazette appears only on the Thursday. The Star which was begun about eighteen months ago, emits its light on Wednesdays and Saturdays—hence a newspaper is issued every day in the week, except on Friday. The old Quebec Gazette has a large circulation, and maintains an extensive influence throughout the Province.

PHILANTHROPIC INSTITUTIONS,

THE Medical and Agricultural Societies are of course restricted to their own professional objects. Similar to other institutions organized for the same purposes, they produce a very salutary influence on the health and prosperity of the district.

The Hotel Dieu and the General Hospital have already been noticed.

The Trinity House is a charitable incorporation for the advantage and security of the Pilots, and their relief in old age, as well as for the support of their widows and children. It is conducted upon similar principles, as the British establishments of the same name.

I. CHARITABLE.

BESIDE the Masonic Lodges, there are several Societies existing in Quebec, for the sole purpose of alleviating distress and supplying the indigent.

As vast numbers of strangers debark in Quebec from Great Britain and Ireland, and often in great wretchedness, an Emigrant Society exists expressly to assist them as they variously need.

There are also a Benevolent and a Friendly Society instituted for the support of their members in sickness and debility.

The Compassionate Society is especially dedicated to Females—and particularly to poor women during their pregnancy and confinement.

The Orphan Asylum is in successful operation.

But the most important of all these species of associations, is the Quebec Institution to suppress Mendicity and find employment for the poor who are willing to labor.—It has been in existence but one winter, and has tended to diminish greatly that intolerable nuisance, street-begging, with its invariable concomitants, indolence, corruption, wretchedness and pilfering. The long accustomed practice of encouraging a horde of lazy mendicants could not be destroyed at once, but if the same system be pursued, and all persons would resolutely co-operate, this bribe for impudence and imposture would be no longer attainable, and the spirit of industry would be generally diffused.

II. RELIGIOUS.

Of these institutions there are five, all of which are connected with the Parent Societies of London.

The Diocesan Society for promoting Christian Knowledge, which is under the patronage and superintendence of the Protestant Bishop of Quebec.

The Quebec Bible Society, and Ladies' Bible Society.
These are Auxiliary to the British and Foreign Bible Society.

The Quebec Religious Tract Society.

The Methodist Missionary Society.

It is unnecessary to describe them, as they are all conducted upon the principles of similar bodies throughout the world.

COMMERCE.

THE Quebec Exchange Reading-room was instituted in 1817, by subscription, and is at present supported by all the principal Merchants of the city. This association now occupy the front apartment immediately above the Quebec Bank in St. Peter street. A large number of Newspapers from Great Britain and the United States, and the principal Magazines, are constantly received. Strangers are admitted, when introduced by a subscriber. This establishment will speedily be removed to a house which is erecting expressly for the accommodation of the Trade. The situation is peculiarly suitable. Standing upon the extremity of the north-east point of the Lower Town, it will command a complete view of the Bay; and when finished will be an attractive object to observers, and will very beneficially facilitate the commercial transactions of the Port.

The edifice will be sixty-five feet in length, by thirty-four broad—and the ground floor will be appropriated for a Piazza. On the first story will be the Reading-room, fifty feet long and thirty feet wide, occupying with the lobby and stair-case the whole space. Above will be a room for the Committee of Trade—a deposit room and four other apartments.

The Committee of Trade to guard the interests of the Merchants, and for the other usual amicable commercial purposes, was instituted in 1809; and like all other simi-

ar associations, their labors are highly salutary to secure their privileges, withstand imposition upon trade, and to promote uniformity in all mercantile transactions.

I. CUSTOM HOUSE.

THE Custom House stands between St. Peter street and the river, and is chiefly distinguished for its extreme unsuitableness for its object, its want of essential accommodation, and the consequent inconvenience both to the Merchants and Officers for their necessary business.

II. BANKS.

THE Bank of Quebec transacts its business in the lower story of the house belonging to the Fire Assurance Company in St. Peter street. The Branch of the Montreal Bank occupy a house in the same street. They are both joint stock companies.

III. INSURANCE.

BESIDES the Quebec Fire Assurance office, several agencies of companies in London and the United States, are appointed for assuring hazards by fire—besides an agency for insuring lives.

There is also an active Fire Society in Quebec; and great encouragement is given to those who display most energy and alacrity in supplying water to extinguish the desolating element.

IV. POST OFFICE.

THE Post Office is kept in a house immediately at the head of the steps which lead from the gate to Mountain street:

V. MARKETS.

IN no public convenience is Quebec at present more deficient than in its Market-places. The Lower Town Market, as it is called by a strange misnomer, is not sufficiently capacious for the supply of provisions for a petty village—and during the navigable season, when the port is full of shipping, its insufficiency is tantamount to a partial embargo. A stranger, lately conducted there, thought his guide was hoaxing him, when he assured him that the little space he was traversing was a market.

The Upper Town Market, although more extended, from the hay, fire-wood, and every other species of lumber, is literally so crammed in every interstice, that no person satisfactorily attends the Market. In addition to which, it is often dangerous to walk about amid restive, untractable horses, which unnecessarily fill up much of the space that should be otherwise occupied. It has the appearance of a horse-market or fair, as much as any thing—and it is truly astonishing that in so restricted a plat, a regulation is not enforced, to keep all horses out of the market, after the cart or sled is pitched. In an area so confined and incommodious as to exclude all ease and comfort, the banishment of the quadrupeds would essentially promote the public convenience.

VI. RIVERS.

Two bridges unite the shores of the St. Charles river—one from the St. Roc's Suburb, and the other about two miles above. The communication with Point Levi is maintained by a Steam-boat, and Horse-boat, continually crossing during the navigable season.

The means of intercourse between Quebec and Montreal are amply sufficient. Two Steam-boats ordinarily leave each port daily, during the summer season. From the commencement of the winter, and throughout its continuance, a Stage for four passengers runs between the two cities thrice weekly; performing the journey, one hundred and eighty miles, very comfortably in two days and a night.

It was previously intended to have conjoined some minuter information respecting the Pilots—the Post Office and the Custom House duties; but as all needful intelligence upon these subjects can be so easily attained by a reference to the Montreal and Quebec annuals, already recommended for that purpose—it was deemed irrelevant to the chief design proposed by this PICTURE OF QUEBEC.

APPENDIX.

No. I.

No topic of political economy and modern history is more interesting than the origin and progressive enlargement of the European Colonies, which, during the sixteenth and seventeenth centuries, were commenced on the Continent of North America. The early annals of some of them are lamentably defective, and it is therefore not surprising that antiquarians grope in vain among the imperfect and mutilated reliques and records of ages removed by thousands of years—when even since the invention of typography, and within only the comparatively short period, since Champlain founded the Metropolis of the British North American Provinces, all ingenuity of conjecture, and patience of research, are baffled in peremptorily determining the true source whence the appellatives Canada and Quebec are derived.

The following extracts contain all that is essential upon this controverted quæstio vexata:—

“Canada, non tam certi cujuspiam loci nomen, quam plagarum sarum, quæ utinque ripis adjacent amplissimi

fuminis illius, cui a St. Laurentio Galli appellationem fecere—communis nomenclatura. Porro, de etymologia vocis Canada nihil satis certi potui comperire; priscam quidem esse constat ex eo, quod illam ante annos prope sexaginta, passim usurpari audiebam puer "

This is a remarkable declaration of Creuxius; and shews the great uncertainty of the appellation—because his narrative commences at the period when Quebec contained but *fifty* Europeans.

Hennepin thus unfolds the origin of the term. "Les Espagnols ont fait la première decouverte du Canada. Ayant mis pied a terre, ils n'y trouverent rien de considerable. Cette raison les obligea d'abandonner ce pays, qu'ils appellerent, *il Capo di Nada*, c'est à dire, *le Cap de Rien*—d'ou est venu par corruption le nom de Canada."

La Potherie corroborates this statement with a memorable particularity of graphical description. "Les monts Notre Dame sur le sommet desquels il y à toujours de la neige dans la plus grande chaleur de l'année se decouvrent de loin du côté sud. Cet aspect donna tant de frayeur aux Espagnols qui ont decouvert le Canada, qu'ils lui donnerent en même, le nom de *Capo di Nada*, qui veut dire, *Cap de Rien*—et ils conçurent une si mauvaise idée de ce vaste pays, qu'ils ne daignerent pas pousser plus loin leur decouverte. Jacques Cartier fut plus heureux que Jean Verazani, qui decouvert toutes les côtes de la mer depuis la Floride, jusqu'à l'embouchure du fleuve St. Laurent—et aussi il fut le premier qui decouvrit le Canada, mais à son malheur—car les Sauvages le mangèrent."

There is a characteristic sang-froid in the last clause of the extract, which is very edifying !

What Creuxius could not definitely discover must necessarily remain in some degree uncertain—but there is a plausibility in the manner of nautical contraction illustrated by Hennepin and La Potherie.

The cause of the name which was applied to the original settlement of Canada, its present metropolis, involves still greater mystery.

In the *Fastes Chronologiques*, it is recorded, that Champlain commenced the permanent occupation of Cape Diamond on the third of July, 1608. “ Les Sauvages donnoient à cet endroit le nom de Québec, ou Quéli-bec, qui dans les langues Algonquine et Abenquoise signifie *retrecissement*, parceque le fleuve s’y retrecit.” This identical reason is promulged more diffusely by Charlevoix. “ Québec est placée sur le fleuve, le plus navigable de l’univers—mais au-dessus de l’isle de l’Orleans, il se retrecit tout à coup de cette sorte, que devant Québec il n’a plus qu’une mille de largeur ; c’est ce qui a fait donner à cet endroit le nom de Québec, qui en langue Algonquine signifie, *retrecissement*. Les Abenquois le nomment Québec, qui veut dire ce qui est fermé, parce que de l’entrée de la petite rivière de la Chaudière, par où ces Sauvages venoient à Québec du voisinage de l’Acadie, la Pointe de Levi cache entièrement le canal du sud—l’isle d’Orleans cache celui du nord, de sorte, que le port de Québec ne paroît de là qu’une grande baie.” La Potherie furnishes two solutions of this verbal difficulty, which so long has been crux etymologorum.—“ Nous n’avons point de connoissance de l’étimologie de

Québec. Les Sauvages qui y habitoient, lorsque les François vinrent s'y établir, l'appelloient Stadaka. On tient, que les Normands qui étoient avec Jacques Cartier à sa première découverte, appercevant au bout de l'isle d'Orléans, un Cap fort élevé, s'écrièrent Quel bec !—et qu'à la suite du tems le nom de Québec lui est resté. Je ne suis pas garand de cette étimologie.

“ Québec est au bout de l'isle d'Orléans. Il y a une rivière une petite demi-lieue de là, qu'on appelle présentement St. Charles—appelée *Kabir Koubac* par les Sauvages, à raison des tours et detours qu'elle fait.”—On Cartier's arrival here, the Indians frequently pronounced these two words—“ Aca Nada”—nothing here ; from which it is supposed the name of the country, Canada, has been derived. These words were first taught them by the Spaniards, who had visited the Baie des Chaleurs, and pronounced these words because they found no gold or silver mines.

Others derive it from the Indian word *Kanata*, pronounced Canada, which signifies a collection of huts.—Lescarbot states that the Indians of Gaspé called themselves Canadians, which name is also confirmed by Champlain. Hist. Gen. des Voyages. vol. 13, p. 23. Champlain, Part 2, p. 197.

Quebec in the Algonquin language signifies *le strait*. Champlain, vol. 1. p. 115. Quebeis, alias Quebec.—Douglas, vol. 1. p. 92. Smith's Canada.

No. II.

CHIEN D' OR.

“ON our way to the Lower Town, passing the pestle and mortar, which is projected over the street, giving notice to the public of the excellence of the medicals, whereof the said pestle and mortar are a symbol, our eyes were arrested, at a few steps, by the spectacle of the *Chien d' Or*. Thereby hangs a tale.

Mr. Phillibert was a merchant of Quebec, during the time that this country was under the French Government. Mr. Bigot, at the same time, was at the head of the Financial Department in Canada; and he had so conducted the fiscal affairs of Canada, or rather of France in respect of Canada, that one of the Queens of that chivalrous kingdom asked her husband, whether the walls of Quebec were made of gold?

Mr. Phillibert and Mr. Bigot did not agree. The former had not the means or the power to have his complaints heard and redressed. He was therefore obliged, instead of preferring them in the shape of an indictment or an impeachment, to write them in the covert language, which is placed under the dog, as his motto.

Je suis un Chien qui ronge l' os —
 En le rougeant je prend mon repos —
 Un tems viendra, qui n' est pas venu —
 Que je mordrai qui m' aura mordu.

This was too much for tyranny. Mr. Phillibert, when descending the Lower Town hill, received the sword of Mr. De R——, an officer of the garrison, through his back ; and the murderer was permitted quietly to depart to the East Indies.

The brother of Mr. Phillibert receiving intelligence of this mournful event, come from France to Canada to settle his brother's estate, and to avenge his blood. Having arranged the former—he pursued Mr. De R—— to Pondicherry, where they met in the street ; instantly drew their swords, fought upon the spot, and the assassin was slain."

The *Chien d' Or* remains to inculcate a profitable lesson to all who are anxious to learn instruction.

No. III.

ABOUT one hundred yards from the lower end of the Rail Way;—General Montgomery and his aids with other men were killed on the morning of December 31, 1775, when proceeding to the assault of Quebec. The place may be easily recognized—notwithstanding the alterations which have occurred. At that period, a narrow path only was made between the foot of the hill, and the river, so that vessels were fastened to the rock by large iron bolts—one of which still remains, near the very spot, where the American General and his advanced party were discomfited. The wharves, houses, &c. all have been long since constructed. At the top of the small ascent on the street immediately below, the small battery had been erected, near the plat where the southerly forge is now stationed.

Few circumstances more vividly teach us the casualties of war, and the minute circumstances upon which so many important results depend. That the success of the assault would have essentially altered the whole course of events connected with the History of Canada is self-evident—but few persons have reflected, that all this depended upon the simple fact whether Montgomery should be a few steps north or south of a certain place at

a given moment. The rock jutted out so as to form a species of barrier in the road—and it was necessary that the point should have been turned before any shot could have been effected. Had the gun been loaded with a single ball only, it might have struck one or two of the party who were just at the point and must have left all the others uninjured—but being filled with grape, the scattering discharge killed or wounded the whole groupe who had passed the corner of the rock, as the gun was stationed expressly to sweep that narrow approach on the top.

The following additional circumstances connected with the death, burial and disinterment of the remains of General Montgomery, were furnished by Mr. James Thompson at the period when the request was made that the reliques might be removed to New York, where they now repose near the marble monument erected in front of St. Paul's Church, on Broadway. Mr. Thompson is still living, ninety-six years of age, and, it is believed, is the sole survivor of all the English and French troops who were engaged, either in the capture or defence of Quebec, during the campaign of 1759.

“ I James Thompson of the city of Quebec, do testify and declare, that I served in the capacity of an Assistant Engineer, during the siege of this city, invested during the years 1775 and 1776 by the American forces under the command of the late Major General Richard Montgomery. That in an attack made by the American troops under the immediate command of General Montgomery in the night of the 31st December, 1775, on a British post at the southernmost extremity of the city,

near *Prés de Ville*, the General received a mortal wound, and with him were killed his two Aides-de-Camp, M^cPherson and Cheeseman, who were found on the morning of the 1st January, 1776, almost covered over with snow. That Mrs. Prentice who kept an Hotel at Quebec, and with whom General Montgomery had previously boarded, was brought to view the body after it was placed in the Guard Room, and which she recognised by a particular mark which he had on the side of his head, to be the General's. That the body was then conveyed to a house immediately opposite to the President's residence, who provided a genteel coffin for the General's body, which was lined inside with flannel, and outside of it with black cloth. That in the night of the 4th January, it was conveyed by me from Gobert's house, and was interred six feet in front of the gate, within a wall that surrounded a powder magazine near the ramparts bounding on St. Lewis gate. That the funeral service was performed at the grave by the Reverend Mr. Montmollin, then Chaplain of the garrison. That his two Aides de Camp, were buried in their clothes without any coffins, and that no person was buried within twenty-five yards of the General. That I am positive and can testify and declare, that the coffin of the late General Montgomery, taken up on the morning of the 16th of the present month of June 1818, is the identical coffin deposited by me on the day of his burial, and that the present coffin contains the remains of the late General. I do further testify and declare, that subsequent to the finding of General Montgomery's body, I wore his sword, being lighter than my own, and on going to the Semi-

nary, where the American officers were lodged, they recognized the sword, which affected them so much that numbers of them wept, in consequence of which, I have never worn the sword since.

“ Given under my hand at the city of Quebec, 19th June, 1818.

JAMES THOMPSON.”

No. IV.

It was originally designed to have inserted a narrative of the Seige of Quebec—but the subject is so familiar, that it was finally resolved to substitute for it a biographical notice of the two Generals. An interesting part is connected with the capture of the city. The execution of very important duties in the Naval department was committed to the great circumnavigator Captain Cook, who was in the year 1759 on the service in the river St. Lawrence. He piloted the boat to the attack of Montmorenci—conducted the embarkation of the troops to the heights of Abraham—surveyed the channel, and fixed the buoys for the safety of the large ships while navigating the river.

The military laurels, which the victor acquired by the termination of the battle, altogether disappears in the deeper moral dignity, which Wolfe developed in the following impressive occurrence.

On the night before the decisive battle, the General visited in a boat some of the posts where the troops were stationed ; during their progress, he repeated with great

sensibility, Gray's *Elegy in a Country Church-yard*—and at the conclusion, remarked—"I should prefer being the author of that poem, to the glory of beating the French to-morrow." A more powerful tribute to the superiority of religion and literary attainments over all terrestrial glory was never enounced. It is a moral characteristic of the General which will survive the annals of warfare.

The ensuing sketch of Montcalm is extracted from Manuel's *L'année Française*.

Ce sont les sacrifices faits à la société qui donnent des droits au souvenir de la postérité ; elle ne peut point oublier ce Général. Il est né, il a vécu, et il est mort dans les camps. Son éducation n'en fut pas moins soignée. Il apprit la langue d'Homère avant de prendre la lance d'Achille. Son esprit se développoit comme son courage ; et également propre aux batailles et aux académies, son désir étoit d'unir aux lauriers de Mars les palmes de Minerve. Mais la guerre occupa presque toute sa vie ; avec des talens et de l'activité, on l'appelloit par tout où il falloit commander et se battre. Chaque grade fut marqué par des blessures ; et en très peu de tems, il mérita d'être à la tête des troupes dans l'Amérique septentrionale. C'est là que se sont montrées les qualités de ce Capitaine—c'est là qu'il a fait voir à quel degré il réunissoit la bravoure du soldat et la grandeur d'ame du héros, la prudence du conseil et la célérité de l'exécution ; ce sang froid que rien n'altère, cette patience que rien ne rebute, et cette résolution courageuse qui ose répondre du succès dans des circonstances où la timide spéculation auroit à peine entrevu des ressources. C'est là qu'au milieu des sauvages dont

il étoit devenu le père, on l'a vu se plier à leur caractère féroce, s'endurcir aux mêmes travaux, et se restreindre aux mêmes besoins, les apprivoiser par la douceur, les attirer par la confiance, les attendrir par tous les soins de l'humanité, et faire dominer le respect et l'amour sur des âmes également indociles au joug de l'obéissance et au frein de la discipline. C'est là que des fatigues et des dangers sans nombre, n'ont jamais ralenti son zèle ; tantôt présent à des spectacles dont l'idée seule fait frémir la nature ; tantôt exposé à manquer de tout, et souvent à mourir de faim. Réduit pendant onze mois à quatre onces de pain par jour, mangeant du cheval pour donner l'exemple, il fut le même dans tous les tems, satisfait de tout endurer.

Un des Chefs Canadiens étonné que celui qui faisoit des prodiges fut d'une petite taille, s'écria la première fois qu'il le vit—"Ah ! que tu es petit ! mais je vois dans tes yeux la hauteur du chêne, et la vivacité des aigles."

Quoique blessé dans le combat, il ne descendit pas de cheval, qu'il n'eut fait lui-même la retraite de l'armée. Sur la réponse que lui fit son chirurgien que ses blessures étoient mortelles—it dit—"pour moi je vais passer la nuit avec Dieu, et me préparer à la mort." Il mourut à cinq heures du matin ; et un trou qu'une bombe avoit fait lui servit de tombeau, dans les jardins des Religieuses Ursulines.

THERE was a remarkable similarity in the prominent characteristics of Wolfe and Montcalm, exclusive of the

seniority in age to which the latter had attained : for he was fifteen years older than Wolfe at the period of their dissolution.

They both entered the army in youth, and were both early distinguished for their intrepidity and aptitude to imbibe knowledge. At twenty years of age, Wolfe received the highest eulogy for his courage, prowess and humanity. To him, the capture of Louisburg was principally attributed—and in natural genius, acquired knowledge, professional skill, self-denying magnanimity, and ascendancy over their troops by a personal attachment, not to the commander, but the benevolent man, they were nearly equalized. In the termination of their career only did they essentially differ in situation—the repulse of the British troops would have added little honor or fame to Montcalm—but it was Wolfe's all. From his own letters to the the elder Pitt, his patron, it is evident, that he considered himself in the state of a desperate gamester upon his last chance—it was disgrace or death—he chose the latter, in connection with the transfer of a Province to England, the effect of which has materially influenced the affairs of the world—and Wolfe and Montcalm continue a memorable example of the perishable nature of all earthly applause separate from the moral and intellectual qualities of man. Wolfe and Montcalm are little known, and scarcely thought of out of Quebec, except by the historical student—but that elegy in the Country Church-yard, which Wolfe may almost be supposed to have recited unconsciously in anticipation, as his own funeral dirge, will be read, admired and repeated, where neither of those chiefs will

be named, and when Wolfe's marble cenotaph in Westminster Abbey shall have crumbled to atoms, and the Quebec Monument to Wolfe and Montcalm shall have disappeared without a solitary vestige of its prior existence.

FINIS.

REFERENCES TO THE MAP.

- A. Castle of St. Lewis.
- B. Parliament House.
- C. Court House.
- D. Commissariat.
- E. Engineer's Office.
- F. St. Louis-street Barracks.
- G. Military Hospital.
- H. Public Offices.
- I. Barracks.
- J. Jail.
- K. Artillery Barracks.
- L. Public Warehouse.
- M. Quebec Exchange.
- N. Fire Assurance Office.
- O. Intendant's Old Palace.
- P. Episcopal Church.
- Q. Catholic Church.
- R. Presbyterian Church.

- S. Trinity Chapel.
- T. St. John's Chapel.
- U. Congreganiste Church.
- V. St. Roch's Church.
- W. Methodist Chapel.
- X. Lower Town Church.
- Y. National School.
- Z. St Roch's School.
- a. Seminary.
- b. Ursuline Convent.
- c. Hotel Dieu Nunnery
- d. General Hospital.
- 1. Diamond Harbour.
- 2. Carman's Wharf.
- 3. Fraser's Wharf.
- 4. Gunboat Wharf.
- 5. Symes' Wharf.
- 6. Heath and Moir's Wharf.
- 7. Cape Diamond Wharf.
- 8. Jones' Wharf
- 9. Anderson's Wharf.
- 10. Irvine's Wharf.
- 11. Finlay's Wharf.
- 12. King's Wharf.
- 13. Brunet's Wharf.
- 14. Queen's Wharf.
- 15. M'Callum's Wharf.
- 16. Hunt's Wharf.
- 17. Goudie's Wharf.
- 18. Bell's Wharf.
- 19. Lampson's Wharf.

20. Quirouet's Wharf.
21. Dumas' Wharf.
22. Morrison's Wharf.
23. Tremain's Wharf.
24. Hunter's Wharf.
25. Wilson's Wharf.
26. Vanfelson's Wharf.
27. Smith's Wharf.
28. Beaupré's Wharf.
29. Corbin's Wharf
30. Grant's Wharf.
31. Taylor's Ship Yard.
32. Pozer's Wharf.
33. M'Callum's Wharf.
34. Bell's Ship Yard.
35. Government Wharf.
36. Munn's Ship Yard.
37. Goudie' Ship Yard.

INDEX.

	PAGE
Banks.....	114
Barracks.....	97
Castle of St. Lewis.....	90
Chasseur's Museum.....	74
Chaudiere.....	46
Church of the Congregation.....	77
Churches at Point Levi.....	79
Citadel.....	96
Civil Edifices.....	90
Commerce.....	112
Court House.....	93
Custom House.....	114
Ecclesiastical Edifices.....	73
Education	108
Engravings	11
Episcopal Church.....	73
Exchange.....	113
Excursions.....	71
Excursion to Paul's Bay.....	56

	PAGE
General Hospital.....	88
Hotel Dieu.....	84
Inclined Plane.....	98
Insurance.....	114
Intendant's Palace.....	95
Itinerary.....	35
Itinerary.....	64
Jail.....	94
Lake St. Charles.....	52
La Prairie.....	21
Literary and Historical Society.....	102
Literature.....	101
Lorette	50
Lower Town Church.....	77
Markets.....	115
Martello Towers.....	96
Methodist Chapel.....	76
Military Edifices.....	96
Montmorenci.....	43
Montreal.....	18
Monument.....	99
Notes.....	117
Panorama of Quebec.....	55
Parliament House.....	91
Philanthropic Institutions.....	110
Point Levi.....	23
Post Office.....	115
Presbyterian Church.....	76
Primitive Methodist Chapel.....	79
Prospect from Cape Diamond.....	40
Protestant Burying Ground.....	78

	PAGE
88	Public Offices..... 73
84	Public Warehouse..... 95
98	Quebec..... 11
114	Quebec described..... 31
95	Quebec Driving Club..... 14
35	Rivers..... 116
64	Seminary..... 79
94	Societies Charitable..... 110
52	“ Religious..... 111
21	Sorel..... 21
102	St. John's Chapel..... 76
101	St. Roch's Church..... 78
50	Tables of the Churches..... 20, 25
77	Three Rivers..... 27
115	Topography of the Rivers..... 18
96	Trinity Chapel..... 76
76	Typography..... 109
96	Ursuline Convent..... 81
43	Vignette..... 11
18	Visitor's Directory..... 35
99	
117	
55	
91	
110	
23	
115	
76	
79	
40	
78	

