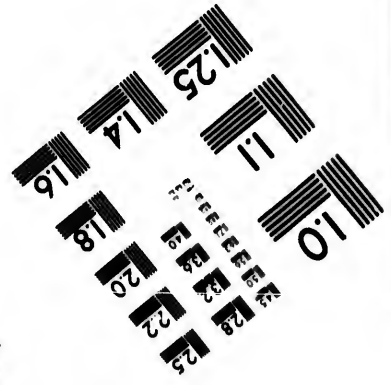
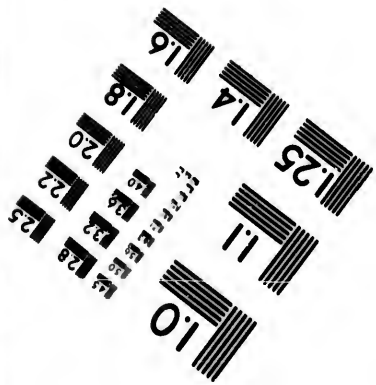
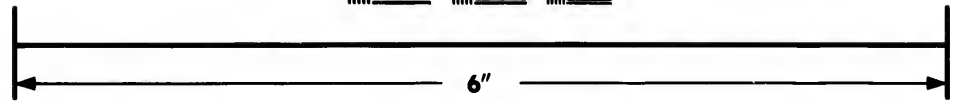
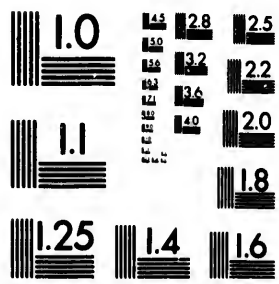


**IMAGE EVALUATION
TEST TARGET (MT-3)**



**Photographic
Sciences
Corporation**

23 WEST MAIN STREET
WEBSTER, N.Y. 14580
(716) 872-4503

1.5
1.8
2.0
2.2
2.5
2.8
3.2
3.6
4.0

**CIHM/ICMH
Microfiche
Series.**

**CIHM/ICMH
Collection de
microfiches.**



Canadian Institute for Historical Microreproductions / Institut canadien de microreproductions historiques

1.5
1.8
2.0
2.2
2.5
2.8
3.2
3.6
4.0

© 1985

Technical and Bibliographic Notes/Notes techniques et bibliographiques

The Institute has attempted to obtain the best original copy available for filming. Features of this copy which may be bibliographically unique, which may alter any of the images in the reproduction, or which may significantly change the usual method of filming, are checked below.

L'Institut a microfilmé le meilleur exemplaire qu'il lui a été possible de se procurer. Les détails de cet exemplaire qui sont peut-être uniques du point de vue bibliographique, qui peuvent modifier une image reproduite, ou qui peuvent exiger une modification dans la méthode normale de filmage sont indiqués ci-dessous.

- Coloured covers/
Couverture de couleur
- Covers damaged/
Couverture endommagée
- Covers restored and/or laminated/
Couverture restaurée et/ou pelliculée
- Cover title missing/
Le titre de couverture manque
- Coloured maps/
Cartes géographiques en couleur
- Coloured ink (i.e. other than blue or black)/
Encre de couleur (i.e. autre que bleue ou noire)
- Coloured plates and/or illustrations/
Planches et/ou illustrations en couleur
- Bound with other material/
Relié avec d'autres documents
- Tight binding may cause shadows or distortion
along interior margin/
La reliure serrée peut causer de l'ombre ou de la
distortion le long de la marge intérieure
- Blank leaves added during restoration may
appear within the text. Whenever possible, these
have been omitted from filming/
Il se peut que certaines pages blanches ajoutées
lors d'une restauration apparaissent dans le texte,
mais, lorsque cela était possible, ces pages n'ont
pas été filmées.
- Additional comments:/
Commentaires supplémentaires:

- Coloured pages/
Pages de couleur
- Pages damaged/
Pages endommagées
- Pages restored and/or laminated/
Pages restaurées et/ou pelliculées
- Pages discoloured, stained or foxed/
Pages décolorées, tachetées ou piquées
- Pages detached/
Pages détachées
- Showthrough/
Transparence
- Quality of print varies/
Qualité inégale de l'impression
- Includes supplementary material/
Comprend du matériel supplémentaire
- Only edition available/
Seule édition disponible
- Pages wholly or partially obscured by errata
slips, tissues, etc., have been refilmed to
ensure the best possible image/
Les pages totalement ou partiellement
obscurcies par un feuillet d'errata, une pelure,
etc., ont été filmées à nouveau de façon à
obtenir la meilleure image possible.

This item is filmed at the reduction ratio checked below/
Ce document est filmé au taux de réduction indiqué ci-dessous.

10X	14X	18X	22X	26X	30X
<input type="checkbox"/>	<input type="checkbox"/>	<input type="checkbox"/>	<input checked="" type="checkbox"/>	<input type="checkbox"/>	<input type="checkbox"/>
12X	16X	20X	24X	28X	32X

The copy filmed here has been reproduced thanks to the generosity of:

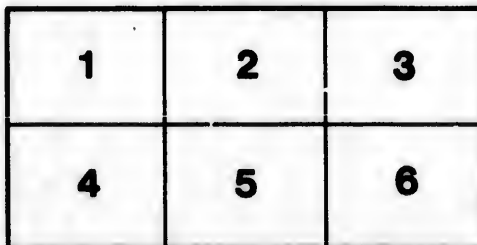
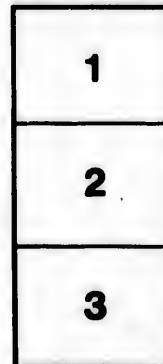
Douglas Library
Queen's University

The images appearing here are the best quality possible considering the condition and legibility of the original copy and in keeping with the filming contract specifications.

Original copies in printed paper covers are filmed beginning with the front cover and ending on the last page with a printed or illustrated impression, or the back cover when appropriate. All other original copies are filmed beginning on the first page with a printed or illustrated impression, and ending on the last page with a printed or illustrated impression.

The last recorded frame on each microfiche shall contain the symbol \rightarrow (meaning "CONTINUED"), or the symbol ∇ (meaning "END"), whichever applies.

Maps, plates, charts, etc., may be filmed at different reduction ratios. Those too large to be entirely included in one exposure are filmed beginning in the upper left hand corner, left to right and top to bottom, as many frames as required. The following diagrams illustrate the method:



L'exemplaire filmé fut reproduit grâce à la générosité de:

Douglas Library
Queen's University

Les images suivantes ont été reproduites avec le plus grand soin, compte tenu de la condition et de la netteté de l'exemplaire filmé, et en conformité avec les conditions du contrat de filmage.

Les exemplaires originaux dont la couverture en papier est imprimée sont filmés en commençant par le premier plat et en terminant soit par la dernière page qui comporte une empreinte d'impression ou d'illustration, soit par le second plat, selon le cas. Tous les autres exemplaires originaux sont filmés en commençant par la première page qui comporte une empreinte d'impression ou d'illustration et en terminant par la dernière page qui comporte une telle empreinte.

Un des symboles suivants apparaîtra sur la dernière image de chaque microfiche, selon le cas: le symbole \rightarrow signifie "A SUIVRE", le symbole ∇ signifie "FIN".

Les cartes, planches, tableaux, etc., peuvent être filmés à des taux de réduction différents. Lorsque le document est trop grand pour être reproduit en un seul cliché, il est filmé à partir de l'angle supérieur gauche, de gauche à droite, et de haut en bas, en prenant le nombre d'images nécessaire. Les diagrammes suivants illustrent la méthode.

e
étails
s du
modifier
r une
Image

s

errata
to
pelure,
on à

QUEEN'S UNIVERSITY AND COLLEGE, KINGSTON, CANADA.

FACULTY OF MEDICINE.

The Twelfth Session of the Medical Faculty will be opened on Wednesday, 4th October, 1865, at 3 o'clock P.M., when the Professors will commence their regular course of Lectures and Demonstrations.

Queen's University being incorporated by Royal Charter, Graduates in Medicine are entitled to obtain the Provincial Licence to practise Physic, Surgery, and Midwifery, by simply presenting their Diplomas to a County Judge, identifying themselves on oath as the persons named therein, and paying \$4, the fee now paid by British Graduates in Medicine to the Provincial Secretary for a Licence to practise in the Province.

Certificates of attendance on Classes in the Medical Department of Queen's College are recognized by the University of Edinburgh, the Royal College of Surgeons of Edinburgh, and other licensing bodies.

The Degree of M.D. of this University entitles the holder to the Diploma of the Royal College of Surgeons of London, England, on passing the required examination.

Students and Under-graduates in Medicine pay an annual Entrance Fee of \$2. Payment of this fee entitles to the use of the Library, which is open daily, at 2 o'clock P.M., and remains open for half an hour.

The fee for each of the Medical Classes is payable on entering the Class at the commencement of the Session. A Student who has attended two courses in any Medical Class in Queen's College, except the Anatomical Demonstrations, is entitled to free attendance in such Class at any subsequent time.

As a general rule, there are weekly examinations in all the Classes.

COURSE OF INSTRUCTION IN THE FACULTY OF MEDICINE.

H. YATES, M.D., DEAN.

FIFE FOWLER, M.D., SECRETARY.

I. THEORY AND PRACTICE OF MEDICINE.

HORATIO YATES, M.D., PROFESSOR.

Lectures daily from 3 to 4 P.M.

CLASS BOOK.—Wood's Practice of Medicine, or Watson's Practice of Medicine.

Fee for the course (six months), \$12.

The whole subject of the Theory and Practice of Medicine is treated in a systematic manner, and special attention is directed to Diseases of the Heart and Lungs, and to their physical diagnoses, which are illustrated by numerous cases in the General Hospital, under the immediate instruction of the Professor and to which cases every Student may have direct access. Thus the Student will be enabled to obtain a thorough and practical knowledge of an important branch of medical practice.

II. MATERIA MEDICA AND PHARMACY.

FIFE FOWLER, M.D., L.R.C.S., Edinburgh, PROFESSOR.

Lectures daily from 9 to 10 A.M.

CLASS BOOK.—Nelligan on Medicines.

BOOK OF REFERENCE.—Pereira's Materia Medica.

The Professor illustrates his course by coloured drawings and specimens of medicinal plants, and samples of the various drugs, chemicals, &c.

Fee for the course (six months), \$12.

III. FORENSIC AND STATE MEDICINE.

J. P. LITCHFIELD, M.D., PROFESSOR.

Lectures on Tuesdays and Fridays from 12 to 1.

BOOKS OF REFERENCE.—Guy's Forensic Medicine, Taylor's Medical Jurisprudence.

The Professor of this branch being Medical Superintendent of the Rockwood Lunatic Asylum, has ample opportunities of instructing his Class in the important subjects of Psychological Medicine.

Fee for the course (six months), \$6.

IV. OBSTETRICS AND DISEASES OF WOMEN AND CHILDREN.

MICHAEL LAVELL, M.D., PROFESSOR.

Lectures daily from 5 to 6 P.M.

BOOKS OF REFERENCE.—Churchill's or Tyler Smith's Midwifery, Churchill on Diseases of Women, Tanner on Diseases of Children.

Fee for the course (six months), \$12.

Ample opportunities are afforded to the Students for studying this important branch practically. The Students are arranged in classes to attend the Obstetric practice of the Hospital, and Clinical Lectures on the Diseases of Women and Children are delivered once a week without extra fee.

F7012.1862.63

V. ANATOMY.

RODERICK KENNEDY, M.D., L.R.C.S., Edinburgh, PROFESSOR.
MICHAEL SULLIVAN, M.D., ASSISTANT PROFESSOR.

Lectures daily from 2 to 3 o'clock P.M.

CLASS BOOK.—Wilson's Anatomy.

Fee for the course (six months), \$12.

Daily Lectures are delivered, illustrated by plates, preparations, and demonstrations on the dead body.

VI. PRINCIPLES AND PRACTICE OF SURGERY.

OCTAVIUS YATES, M.D., PROFESSOR.

Lectures daily from 4 to 5 P.M.

CLASS BOOKS.—Druitt's Surgery, Syme's Surgery.

Fee for the course (six months), \$12.

These Lectures embrace the Principles and Practice of Surgery, and Surgical Anatomy. The course is illustrated by Plates and Models, as well as Pathological Specimens. The Use of Instruments and the Application of Surgical Apparatus and Appliances are taught. The chief operations are performed on the Cadaver before the Class.

VII. CHEMISTRY.

ROBERT BELL, C.E., F.G.S., PROFESSOR.

Lectures daily from 10 to 11 A.M., illustrated by extensive series of diagrams, tables, apparatus, and preparations. Experiments daily.

CLASS BOOK.—Fownes' Manual of Chemistry.

Fee for the course of Lectures (six months), \$12.

A separate Class for PRACTICAL CHEMISTRY is taught on Saturdays for at least two hours. The Laboratory is commodious, comfortably heated, well ventilated, and specially fitted up for convenience in teaching simultaneously a large class. Each Student has the use of a separate set of reagents, and performs every experiment for himself. A Systematic Course of Testing and Separation of Bases and Acids is gone through, with Special Processes applicable to Medical Chemistry and Toxicology. Instruction is also given in manipulation, in the use and fitting up of apparatus, and preparation of reagents.

The course of Practical Chemistry is not compulsory; but the Faculty strongly recommend Students of Medicine to avail themselves of its advantages. Fee for the course \$12, including \$7 for the use of apparatus and reagents, payable strictly in advance.

VIII. INSTITUTES OF MEDICINE.

DONALD MACLEAN, M.D., L.R.C.S.E., PROFESSOR.

Lectures daily from 11 to 12.

BOOKS OF REFERENCE.—Draper's Physiology and Virchow's Cellular Pathology.

Fee for the course (six months), \$12.

The Lectures of this course, which embrace Physiology, General Pathology, and Therapeutics, are illustrated by vivisections, demonstrations with the microscope, also plates, drawings, and specimens from the Museum.

IX. PRACTICAL ANATOMY.

RICHARD A. REEVE, B.A., M.D., DEMONSTRATOR.

Daily demonstrations on the recent subject.

BOOK FOR USE IN DISSECTING ROOM.—Ellis's Demonstrations.

Fee for each course of Anatomical Demonstrations and use of the Dissecting Room (six months), \$6.

By an Act of the Province, the bodies of convicts dying in the Provincial Penitentiary are given up for Anatomical purposes. This gives to Kingston very great advantages for the study of Practical Anatomy.

PRIZES.

Two prizes are offered for competition—1st prize, of the value of \$25, for the best collection of anatomical preparations; 2nd prize, of the value of \$15, for the second best collection of anatomical preparations. These preparations to become the property of the College, and to be kept marked with the prizeman's name in the Medical Museum. The Faculty reserve the power of withholding one or both prizes if the preparations given in are not deemed of sufficient merit.

HOSPITAL.

The Kingston General Hospital, which is quite contiguous to the College, may be attended by Students during their whole period of study by one payment of \$4 at the commencement of the course.

The Hospital, which has been lately enlarged, has accommodation for 150 beds. The recently erected "Watkins Wing" contains a very large and commodious Clinical Lecture Room and Operating Theatre, so arranged as to afford an opportunity to all Students of simultaneously witnessing the operations.

The Lectures on Clinical Medicine and Clinical Surgery will in future be delivered twice a week in the new Theatre of the Hospital. Fee entitling to attendance on both courses, \$6.

Prof. HORATIO YATES, M.D., Lecturer on Clinical Medicine.

Prof. MACLEAN, M.D., L.R.C.S.E., Lecturer on Clinical Surgery.

Med six Brit a De of g him worl durin Exar subj Clin subj subj day
\$20.00
Specia lty Nov 78
SC/LP

REQUISITES FOR GRADUATION.

A Candidate for the Degree of M.D. must have been engaged in Medical and Surgical study for four years—the Medical Session of each year, or *Annus Medicus*, being constituted by Matriculation and Attendance on full courses of Lectures in at least two classes by separate Professors.

One year's instruction under a duly qualified Medical Practitioner, certified to the satisfaction of the Medical Faculty prior to attendance on Lectures, is regarded as equivalent to a year's College attendance, and, in such cases, constitutes the *Annus Medicus*. A similar privilege is accorded to Graduates in Arts.

The Candidate must have given regular attendance on full Courses of Instruction in the following Departments for the periods stated:—

- I. Theory and Practice of Medicine,
- II. Materia Medica and Pharmacy,
- III. Obstetrics and Diseases of Women and Children,
- IV. Anatomy,
- V. Principles and Practice of Surgery,
- VI. Anatomical Demonstrations,
- VII. Chemistry,
- VIII. Institutes of Medicine,
- IX. Forensic and State Medicine,
- X. Clinical Medicine,
- XI. Clinical Surgery,
- XII. Hospital,

} Two full courses of six months each.

} Two courses of three months each.

} Twelve months.

The above course of study may have been pursued either wholly in Queen's College, or partly there, and partly in some other recognized Medical School. In the latter case, at least one full Session must have been spent in Queen's College, with attendance on at least four of the above six months courses.

Certificates of attendance on Lectures are received from incorporated Medical Schools in the British Dominions, and others recognized by the British Universities and Licensing Colleges. Other certificates of attendance on Lectures may be admitted at the discretion of the Faculty.

Every Candidate must deliver, before 15th February of the year in which he proposes to graduate, to the Secretary of the Faculty of Medicine, a Declaration under his own hand that he is twenty-one years of age, or that he will be so before the day of graduation, accompanied by a certificate of good moral character, a statement of his studies, literary and scientific as well as Medical, with proper certificates, and a Thesis composed by himself, and in his own handwriting, to be approved by the Medical Faculty.

The Candidate must have passed a Matriculation Examination in the common branches of English Education, and also in one of the following works:—Caesar's Commentaries; London Pharmacopoeia; Gregory's *Conspicua*; Celsus De Medicina. This Examination, which must be passed during the first Session of attendance, is not required when the Student produces a certificate of having passed a similar or equivalent Matriculation Examination at any other recognized College.

Each Candidate is examined both in writing and *viva voce*—first, on Materia Medica, Chemistry, Anatomy, and Institutes of Medicine:—these subjects constituting the *Primary Examination*; secondly, on Surgery, Theory and Practice of Medicine, Forensic and State Medicine, Obstetrics, Clinical Medicine, and Clinical Surgery, which are the subjects of the *Final Examinations*.

Students who profess themselves ready to submit to the *Primary Examination*, that is, to an examination on the first division of these subjects, at the end of their third year, may be admitted to examination at that time. The *Final Examination*, embracing the second division of subjects, shall not take place until the Candidate has completed his fourth or last Session.

The *Primary* and *Final Examinations* will commence on the 6th of March and be concluded before the last Thursday of March, which is the day fixed for Graduation.

Additional papers in Classics or in subjects of the Final Examination will be set for Candidates for Honours.

The Graduation Fee is \$20.

Students are received on the same terms as at other Canadian Universities, and the Faculty have established a Summer Session.

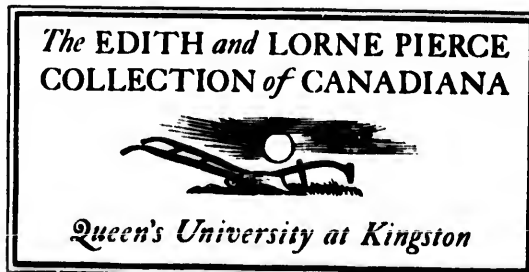
Board can be obtained in Kingston at from \$2 to \$3 a week.

Any additional information may be obtained on application to the Dean or Secretary of the Faculty.

\$20.00

Specia / ty #13 Nov 78

SC/LP



3007975

