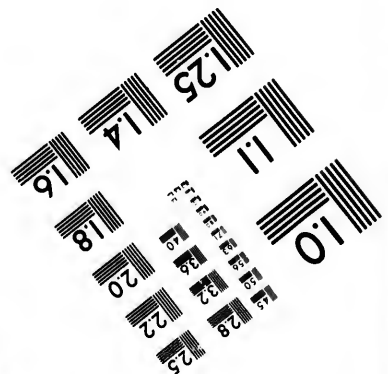
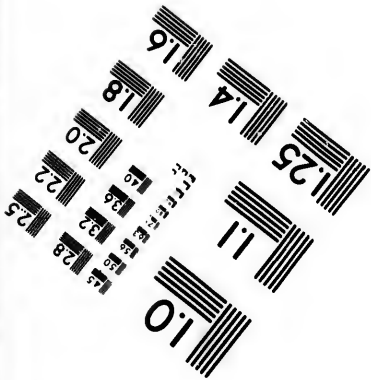
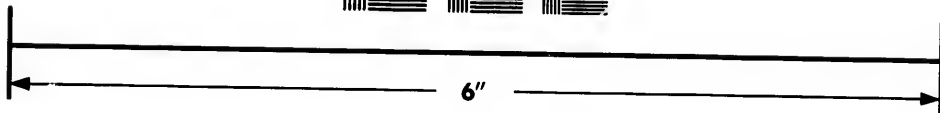
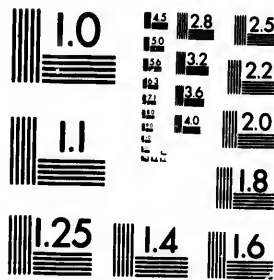
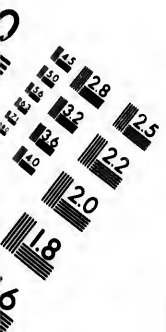


**IMAGE EVALUATION
TEST TARGET (MT-3)**



**Photographic
Sciences
Corporation**

23 WEST MAIN STREET
WEBSTER, N.Y. 14580
(716) 872-4503



**CIHM/ICMH
Microfiche
Series.**

**CIHM/ICMH
Collection de
microfiches.**



Canadian Institute for Historical Microreproductions / Institut canadien de microreproductions historiques

© 1986



Technical and Bibliographic Notes/Notes techniques et bibliographiques

The Institute has attempted to obtain the best original copy available for filming. Features of this copy which may be bibliographically unique, which may alter any of the images in the reproduction, or which may significantly change the usual method of filming, are checked below.

L'Institut a microfilmé le meilleur exemplaire qu'il lui a été possible de se procurer. Les détails de cet exemplaire qui sont peut-être uniques du point de vue bibliographique, qui peuvent modifier une image reproduite, ou qui peuvent exiger une modification dans la méthode normale de filmage sont indiqués ci-dessous.

- Coloured covers/
Couverture de couleur
- Covers damaged/
Couverture endommagée
- Covers restored and/or laminated/
Couverture restaurée et/ou pelliculée
- Cover title missing/
Le titre de couverture manque
- Coloured maps/
Cartes géographiques en couleur
- Coloured ink (i.e. other than blue or black)/
Encre de couleur (i.e. autre que bleue ou noire)
- Coloured plates and/or illustrations/
Planches et/ou illustrations en couleur
- Bound with other material/
Relié avec d'autres documents
- Tight binding may cause shadows or distortion
along interior margin/
La reliure serrée peut causer de l'ombre ou de la
distorsion le long de la marge intérieure
- Blank leaves added during restoration may
appear within the text. Whenever possible, these
have been omitted from filming/
Il se peut que certaines pages blanches ajoutées
lors d'une restauration apparaissent dans le texte,
mais, lorsque cela était possible, ces pages n'ont
pas été filmées.
- Additional comments:/
Commentaires supplémentaires:

[Printed ephemera] 1 sheet (verso blank)

- Coloured pages/
Pages de couleur
- Pages damaged/
Pages endommagées
- Pages restored and/or laminated/
Pages restaurées et/ou pelliculées
- Pages discoloured, stained or foxed/
Pages décolorées, tachetées ou piquées
- Pages detached/
Pages détachées
- Showthrough/
Transparence
- Quality of print varies/
Qualité inégale de l'impression
- Includes supplementary material/
Comprend du matériel supplémentaire
- Only edition available/
Seule édition disponible
- Pages wholly or partially obscured by errata
slips, tissues, etc., have been refilmed to
ensure the best possible image/
Les pages totalement ou partiellement
obscurcies par un feuillet d'errata, une pelure,
etc., ont été filmées à nouveau de façon à
obtenir la meilleure image possible.

This item is filmed at the reduction ratio checked below/
Ce document est filmé au taux de réduction indiqué ci-dessous.

10X	14X	18X	22X	26X	30X
<input type="checkbox"/>	<input type="checkbox"/>	<input type="checkbox"/>	<input checked="" type="checkbox"/>	<input type="checkbox"/>	<input type="checkbox"/>
12X	16X	20X	24X	28X	32X

The copy filmed here has been reproduced thanks to the generosity of:

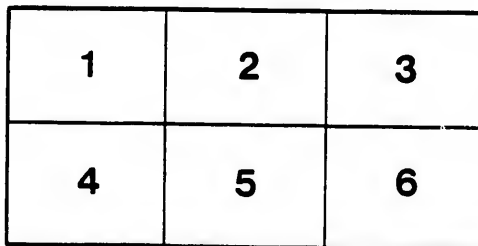
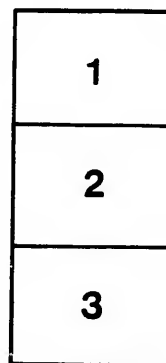
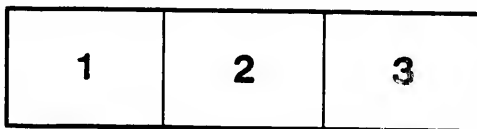
D. B. Weldon Library
University of Western Ontario
(Regional History Room)

The images appearing here are the best quality possible considering the condition and legibility of the original copy and in keeping with the filming contract specifications.

Original copies in printed paper covers are filmed beginning with the front cover and ending on the last page with a printed or illustrated impression, or the back cover when appropriate. All other original copies are filmed beginning on the first page with a printed or illustrated impression, and ending on the last page with a printed or illustrated impression.

The last recorded frame on each microfiche shall contain the symbol \rightarrow (meaning "CONTINUED"), or the symbol ∇ (meaning "END"), whichever applies.

Maps, plates, charts, etc., may be filmed at different reduction ratios. Those too large to be entirely included in one exposure are filmed beginning in the upper left hand corner, left to right and top to bottom, as many frames as required. The following diagrams illustrate the method:



L'exemplaire filmé fut reproduit grâce à la générosité de:

D. B. Weldon Library
University of Western Ontario
(Regional History Room)

Les images suivantes ont été reproduites avec le plus grand soin, compte tenu de la condition et de la netteté de l'exemplaire filmé, et en conformité avec les conditions du contrat de filmage.

Les exemplaires originaux dont la couverture en papier est imprimée sont filmés en commençant par le premier plat et en terminant soit par la dernière page qui comporte une empreinte d'impression ou d'illustration, soit par le second plat, selon le cas. Tous les autres exemplaires originaux sont filmés en commençant par la première page qui comporte une empreinte d'impression ou d'illustration et en terminant par la dernière page qui comporte une telle empreinte.

Un des symboles suivants apparaîtra sur la dernière image de chaque microfiche, selon le cas: le symbole \rightarrow signifie "A SUIVRE", le symbole ∇ signifie "FIN".

Les cartes, planches, tableaux, etc., peuvent être filmés à des taux de réduction différents. Lorsque le document est trop grand pour être reproduit en un seul cliché, il est filmé à partir de l'angle supérieur gauche, de gauche à droite, et de haut en bas, en prenant le nombre d'images nécessaire. Les diagrammes suivants illustrent la méthode.

re
détails
es du
modifier
er une
filmage

es

errata
to

pelure,
on à



32X

Promotion and Review Examination

JUNE, 1897.

ARITHMETIC—2nd to 3rd Class. Time 2 1-2 Hours.

Value

LIMIT OF WORK.—Numeration and notation, Arabic to 1,000,000; Roman notation to the number of the year. **ACCURATE AND RAPID** Mechanical operations in the four simple rules. **PRACTICAL** applications of the four simple rules. Easy factoring. Multiplication and division by factors. Writing, adding, etc., dollars and cents. Mental arithmetic.

- 8 1. A match factory made 750680 cases of matches. Each case contained 579800 matches: How many matches made altogether?
- 12 2. A baker sold 372 loaves at 5c. each, 541 loaves at 6c. each, 1224 buns at 10c. a dozen, and 750 tarts at 20c. a dozen: How many barrels of flour can he buy with the money, at \$3 a barrel?
- 10 3. How many pounds of tea at 37c. a pound can I buy with the price of 80 bushels of wheat at one dollar and eleven cents a bushel?
- 10 4. Express in Roman numerals the difference between MMCDLXXXVII and CCCXLIX.
- 10 5. Write in words the value of 1030033.
- 12 6. Sam's marbles are worth Frank's marbles and 3 cents; if Frank had 12 more marbles he would have as many as Sam has, and the marbles of both are worth 42 cents. What is the value of Frank's marbles?
- 12 7. Harry multiplied 798805 by 780006 instead of multiplying by 780200. How much too small is his answer.
- 12 8. May bought 90 gum drops for 18 cents; She sold twelve for 4 cents and 26 more for 8 cents. How many must she now sell for 16 cents so as to have 10 cents more than she paid and have 20 gum drops besides?
- 6+4 9. Six men, A, B, C, D, E, and F, sell goods for a week, taking in the amounts given below:

Value

	Mon	Tue	Wed	Thu	Frid	Sat	Total.
(a) How much did each take in during the week?	A 13.57	27.92	58.74	92.57	86.94	39.75	
	B 56.42	87.50	89.57	56.45	23.77	164.29	
(b) What did each day's sales amount to for the 6 men?	C 38.57	84.46	92.88	73.00	58.58	9.66	
	D 33.76	68.59	64.47	96.56	65.69	37.75	
(c) What was the amount of all sales for the week?	E 61.54	45.90	32.09	58.47	76.47	86.63	
	F 89.74	71.92	39.78	77.83	80.19	93.42	

The work may be done on this paper without copying the figures.

Count 100 marks a full paper, including time exercises; 40 the minimum to pass.

Add marks from 0 to 10, according to style of work. Award this value having regard to neatness of figures, arrangement of work, statements in words of the steps and denominations and the excellence of the writing.

For promotion exact a minimum of 40 marks exclusive of the marks for neatness and style of work. Enter the latter on the report in a small figure, placed over the marks obtained on the question. The marks awarded for style are to be counted on the total.

Teachers should not give their pupils any assistance, by hints or otherwise, on this paper. This examination should not overrun the time limit set above.

