

**CIHM
Microfiche
Series
(Monographs)**

**ICMH
Collection de
microfiches
(monographies)**



Canadian Institute for Historical Microreproductions / Institut canadien de microreproductions historiques

© 1996

Technical and Bibliographic Notes / Notes technique et bibliographiques

The Institute has attempted to obtain the best original copy available for filming. Features of this copy which may be bibliographically unique, which may alter any of the images in the reproduction, or which may significantly change the usual method of filming are checked below.

- ☐ Coloured covers / Couverture de couleur
- ☐ Covers damaged / Couverture endommagée
- ☐ Covers restored and/or laminated / Couverture restaurée et/ou pelliculée
- ☐ Cover title missing / Le titre de couverture manque
- ☐ Coloured maps / Cartes géographiques en couleur
- ☐ Coloured ink (i.e. other than blue or black) / Encre de couleur (i.e. autre que bleue ou noire)
- ☐ Coloured plates and/or illustrations / Planches et/ou illustrations en couleur
- ☐ Bound with other material / Relié avec d'autres documents
- ☐ Only edition available / Seule édition disponible
- ☐ Tight binding may cause shadows or distortion along interior margin / La reliure serrée peut causer de l'ombre ou de la distorsion le long de la marge intérieure.
- ☐ Blank leaves added during restorations may appear within the text. Whenever possible, these have been omitted from filming / Il se peut que certaines pages blanches ajoutées lors d'une restauration apparaissent dans le texte, mais, lorsque cela était possible, ces pages n'ont pas été filmées.
- ☐ Additional comments / Commentaires supplémentaires:

L'Institut a microfilmé le meilleur exemplaire qu'il lui a été possible de se procurer. Les détails de cet exemplaire qui sont peut-être uniques du point de vue bibliographique, qui peuvent modifier une image reproduite, ou qui peuvent exiger une modifications dans la méthode normale de filmage sont indiqués ci-dessous.

- ☐ Coloured pages / Pages de couleur
- ☐ Pages damaged / Pages endommagées
- ☐ Pages restored and/or laminated / Pages restaurées et/ou pelliculées
- ☒ Pages discoloured, stained or foxed / Pages décolorées, tachetées ou piquées
- ☐ Pages detached / Pages détachées
- ☒ Showthrough / Transparence
- ☐ Quality of print varies / Qualité inégale de l'impression
- ☐ Includes supplementary material / Comprend du matériel supplémentaire
- ☐ Pages wholly or partially obscured by errata slips, tissues, etc., have been refilmed to ensure the best possible image / Les pages totalement ou partiellement obscurcies par un feuillet d'errata, une pelure, etc., ont été filmées à nouveau de façon à obtenir la meilleure image possible.
- ☐ Opposing pages with varying colouration or discolourations are filmed twice to ensure the best possible image / Les pages s'opposant ayant des colorations variables ou des décolorations sont filmées deux fois afin d'obtenir la meilleur image possible.

**This item is filmed at the reduction ratio checked below/
Ce document est filmé au taux de réduction indiqué ci-dessous.**

A horizontal number line with 23 equal segments. The top of the line is labeled with $10x$, $14x$, $18x$, $22x$, $26x$, and $30x$. The bottom of the line is labeled with $12x$, $16x$, $20x$, $24x$, $28x$, and $32x$. A checkmark is placed in the 5th segment from the left, which is between the $14x$ and $16x$ marks.

The copy filmed here has been reproduced thanks to the generosity of:

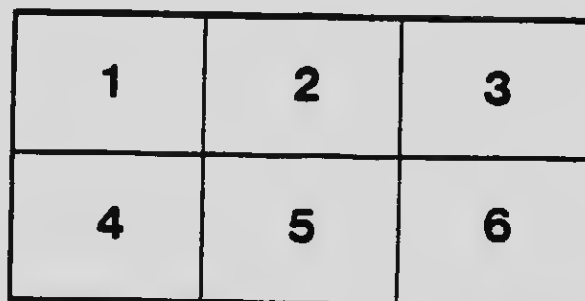
National Library of Canada

The images appearing here are the best quality possible considering the condition and legibility of the original copy and in keeping with the filming contract specifications.

Original copies in printed paper covers are filmed beginning with the front cover and ending on the last page with a printed or illustrated impression, or the back cover when appropriate. All other original copies are filmed beginning on the first page with a printed or illustrated impression, and ending on the last page with a printed or illustrated impression.

The last recorded frame on each microfiche shall contain the symbol \rightarrow (meaning "CONTINUED"), or the symbol ∇ (meaning "END"), whichever applies.

Maps, plates, charts, etc., may be filmed at different reduction ratios. Those too large to be entirely included in one exposure are filmed beginning in the upper left hand corner, left to right and top to bottom, as many frames as required. The following diagrams illustrate the method:



L'exemplaire filmé fut reproduit grâce à la générosité de:

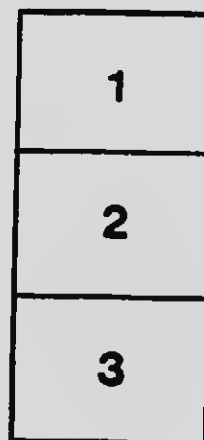
Bibliothèque nationale du Canada

Les images suivantes ont été reproduites avec le plus grand soin, compte tenu de la condition et de la netteté de l'exemplaire filmé, et en conformité avec les conditions du contrat de filmage.

Les exemplaires originaux dont la couverture en papier est imprimée sont filmés en commençant par le premier plat et en terminant soit par la dernière page qui comporte une empreinte d'impression ou d'illustration, soit par le second plat, selon le cas. Tous les autres exemplaires originaux sont filmés en commençant par la première page qui comporte une empreinte d'impression ou d'illustration et en terminant par la dernière page qui comporte une telle empreinte.

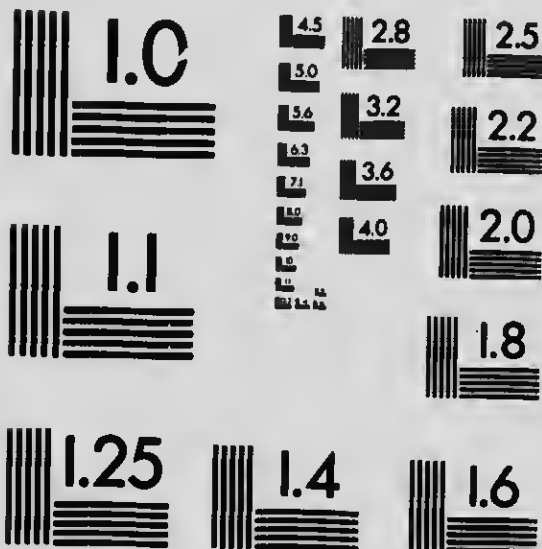
Un des symboles suivants apparaîtra sur la dernière image de chaque microfiche, selon le cas: le symbole \rightarrow signifie "À SUIVRE", le symbole ∇ signifie "FIN".

Les cartes, planches, tableaux, etc., peuvent être filmés à des taux de réduction différents. Lorsque le document est trop grand pour être reproduit en un seul cliché, il est filmé à partir de l'angle supérieur gauche, de gauche à droite, et de haut en bas, en prenant le nombre d'images nécessaire. Les diagrammes suivants illustrent la méthode.



MICROCOPY RESOLUTION TEST CHART

(ANSI and ISO TEST CHART No. 2)



APPLIED IMAGE Inc

1653 East Main Street
Rochester, New York 14609 USA
(716) 482 - 0300 - Phone
(716) 288 - 5989 - Fax

ASSESSMENT SYSTEM
CONSTITUTION
OF THE
SONS OF ENGLAND
BENEFIT SOCIETY

*Under the Jurisdiction of the Supreme Lodge, with power
to establish and operate Lodges in all parts
of the British Emptre.*



Established December 12th, 1874
Incorporated February 19th, 1875
AMENDED AT OTTAWA, AUGUST, 1910

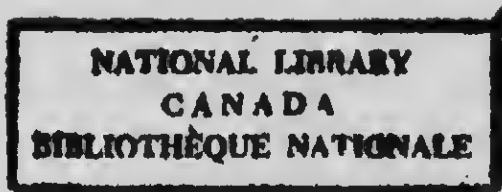
TORONTO:
THE SONS OF ENGLAND RECORD

HS1805

C22

S65

1910



The Sons of England Benefit Society was founded in the City of Toronto, in the Province of Ontario, and Dominion of Canada, on the 12th day of December, 1874, by George F. Carrette, James Lomas, Samuel Buckner, and others.

CONTENTS.

Sections.

Supreme Lodge, embracing Guarantee, Funeral and Beneficiary Departments	1 to 165
Subordinate Lodges	166 to 262
Juvenile Lodges	263 to 302

(Detailed Index at back of Book.)

CONSTITUTION

OF THE

SONS OF ENGLAND BENEFIT SOCIETY

(All previous issues are hereby repealed.)

This Society is incorporated under the provisions of the Statutes of the Province of Ontario.

NAME AND OBJECTS OF THE SOCIETY.

1. This Society shall be known as the "Sons of England Benefit Society," and have for its objects:—

(1) The bringing together of Englishmen and their male descendants for their mutual benefit and support, and the maintenance of the British Connection.

(2) The raising of funds by entrance fees, dues, beneficiary assessments, fines, donations, and interest on capital, for the following purposes: Rendering assistance to members when sick or unable to follow their employment, supplying medical attendance and medicine to members, insuring the lives of members, assisting in defraying the funeral expenses of deceased

members, members' deceased wives and children, granting relief to members in distressed circumstances, and by divers other methods.

MEMBERSHIP.

2. This Society shall consist of an unlimited number of members, but every person admitted to membership shall be 17 and not over 50 years of age, except in the case of honorary members.

3. This Society shall be composed of Englishmen and their male descendants, who must be Protestants; and the definition of an Englishman as accepted by this Society is, that he or his ancestors must have been born in England, Wales, the Isle of Man, Angelsea or the Channel Isles. The wives of all candidates and of members must be Protestants, independent of their nationality. All candidates for membership must be of good moral character and in sound health.

SUPREME LODGE POWERS.

4. The Supreme Lodge is the source of all true and legitimate authority in the Sons of England Benefit Society, wheresoever established, and possessing original and exclusive jurisdiction and power:

(1) To establish, regulate and control the forms, ceremonies, written and unwritten work, and to change, alter and annul the same; and to provide for the safe-keeping and uniform teaching and dissemination of the same;

(2) To provide, print and furnish all rituals, forms, ceremonies, cards, odes, charts and certificates, seals and all necessary supplies, as it may determine in regard to price and payment therefor; "Provided, however, that the Supreme Lodge may permit any Grand Lodge to provide, print, and furnish any forms or supplies in accordance with the directions and approval of the Supreme Lodge for use by Subordinate and Juvenile Lodges under the jurisdiction of such Grand Lodge."

(3) To prescribe the form, material and color of all regalia, emblems, jewels and charts recognized by the society;

(4) To provide for the emanation and distribution of all passwords; regulate the mode and manner of using the same, and generally to prescribe such regulations as may be necessary to secure the safe and easy intercourse and identification of the members;

(5) To establish, regulate and control a Funeral Department, Guarantee Department, Beneficiary Department, Sick Benefit Department, Juvenile Department, or any

other department advantageous to the society, and in harmony with its avowed aim and objects; "Provided that where any Grand Lodge may hereafter be established, such Grand Lodge shall immediately take over the control and management of the Funeral Benefit Department, in so far as the members under the jurisdiction of such Grand Lodge are concerned, subject, however, to the provisions of Section 81 to 89, inclusive, of the Constitution, the funds of which department must be kept solely for the purpose of paying funeral claims; but the Supreme Lodge shall, out of the funds of its Funeral Benefit Department, pay to any such Grand Lodge all funeral benefit claims that may arise during the three months next succeeding the establishing of any such Grand Lodge, unless otherwise provided for by Supreme Lodge in Session, and such Grand Lodge shall also have jurisdiction over Subordinate and Juvenile Lodges within its territorial jurisdiction, and the Sick Benefit Departments in connection therewith."

(6) To establish the order in any part of the British Empire, create and charter grand lodges, and where no grand lodge exists, subordinate and juvenile lodges in any country, colony, province or portion of either of the same within the British Empire, define the territorial jurisdiction of any and all grand lodges, and provide a

constitution for all grand, subordinate and juvenile lodges under its jurisdiction.

(7) To provide a revenue for Supreme Lodge by means of a representative or capitation tax upon grand, subordinate and juvenile lodges, dues and levies upon members and charges for supplies.

(8) To provide for returns from each grand lodge and from each subordinate and juvenile lodge under its immediate jurisdiction;

(9) To hear and determine all appeals from grand, subordinate and juvenile lodges, when the same are properly brought before it in accordance with the regulations of the Society, and provide legislation for the enforcement of its decisions;

(10) To enact laws and regulations of general application, carry into effect the foregoing, exercise all other powers reserved by this constitution to the Supreme Lodge, its Supreme Executive Council or officers, and do everything necessary to enforce its legitimate authority over grand, subordinate and juvenile lodges;

(11) To suspend, dissolve, forfeit or cancel the charter of any grand lodge, and where no Grand Lodge exists, of any subordinate or juvenile lodge:—

(a) For improper conduct;

(b) For neglecting or refusing to conform to the constitution, laws or enactments of the Supreme lodge, or the general laws and regulations of the Society;

(c) For neglecting or refusing to make its returns or for non-payment of dues, levies or assessments, to the Supreme lodge; but the charter shall not be forfeited in either of the above cases until the lodge shall have been duly notified of its offence by the Supreme Secretary, and suitable opportunity given to answer the charges made against it;

(d) For neglecting to hold the regular stated meetings as provided by the constitution, without a proper dispensation therefor, or unless prevented from doing so by some unseen circumstances;

(e) By its membership diminishing, so that less than a constitutional quorum may be left.

SUPREME LODGE—HOW CONSTITUTED.

5. The Supreme Lodge shall consist of—

- (1) A Supreme President (presiding officer),
- “ Supreme Vice-President,
- “ Supreme Secretary,
- “ Supreme Treasurer,

- " Supreme Chaplain,
- " Supreme Marshal,
- " Supreme Inner Guard,
- " Supreme Outer Guard;

(2) One delegate duly elected from each subordinate lodge under the immediate jurisdiction of the Supreme Lodge; and two representatives duly elected from each grand lodge under the jurisdiction of the Supreme Lodge for the first 500 members or fractional part thereof in the jurisdiction of a grand lodge; and one additional representative for each additional 500 members in such grand jurisdiction.

(3) All Past Supreme Presidents who have attained the rank either by service in the office or for meritorious service in the parent Supreme Lodge, provided that no member of the Supreme Lodge shall be entitled to a seat therein unless he is clear of all dues or other charges in his subordinate lodge.

6 No delegate to or member of Supreme Lodge shall hold any remunerative or honorary position in a straight Life Insurance Company, except that of medical examiner.

QUORUM.

7. Fifty members of Supreme Lodge shall constitute a quorum.

ELECTIONS, APPOINTMENTS AND INSTALLATIONS OF SUPREME LODGE OFFICERS.

8 The election of Supreme Lodge Officers shall be the first order of business on the morning of the fourth or last day of each regular session of Supreme Lodge. The installation of officers shall be immediately after the business of the Session of Supreme Lodge at which their election takes place has been completed.

9. The executive officers to be elected shall be Supreme President, Supreme Vice-President, Supreme Secretary and Supreme Treasurer.

10. The officers to be appointed by the Supreme President for each session of the Supreme Lodge shall be Supreme Chaplain, Supreme Marshal, Supreme Inner Guard and Supreme Outer Guard.

11. In all elections three scrutineers shall be chosen from the floor of Supreme Lodge without ballot, but no candidate for any office shall be eligible to act as scrutineer. The scrutineers shall perform their duties in the presence of the members of Supreme Lodge, and no adjournment shall be made under any circumstances until the result of the ballot is announced.

12. A majority of the votes present shall be necessary to constitute a choice. In

case of a tie the balloting shall continue until a choice is made. The name of the member receiving the lowest number of votes at each balloting shall be withdrawn. In case any officer be absent at the time of installation, unless excused by the Supreme Lodge, or through sickness, his office shall be declared vacant, and another and immediate election held to fill the vacancy; but if the absent officer-elect has been excused, or is ill, then the Supreme President may be empowered to install during recess, at his convenience.

DUTIES OF SUPREME LODGE OFFICERS.

13. The Past Supreme President shall have charge of and supervise the arrangement of the altar and all floor work.

14. The Supreme President shall preside at all meetings of the Supreme Lodge, decide all questions of order, subject, however, to an appeal to the Supreme Lodge; save in the election of officers, have no vote except when votes are equal, in which case he shall have the casting vote; temporarily fill vacancies caused by the absence of regular officers, sign all orders on the Supreme Treasurer and all official documents requiring his signature; be an ex-officio member of all committees of Supreme Lodge, and exercise, as occasion may require, all the rights appertaining to his office, in

accordance with the usages of the Society; have a watchful supervision over all grand lodges and subordinate and juvenile lodges and Advisory Boards under the immediate jurisdiction of the Supreme Lodge, and see that all the constitutional enactments, rules and edicts of the Supreme Lodge are duly and promptly observed, and that the regalia, work and discipline of the Society everywhere are uniform; may call special sessions of the Supreme Lodge, or meetings of Supreme Executive Council; visit any grand or subordinate lodge under the jurisdiction of the Supreme Lodge, and give such instructions and directions as the good of the Society may require, always adhering to the obligatory usages of the Society; have the exclusive right to create and disseminate all Supreme, grand and subordinate term of special passwords, and to rescind, withhold, call in or change the same if circumstances require, and prescribe their application and use; cause to be executed and securely to preserve and keep the official bonds and securities of the Supreme Treasurer and Supreme Secretary; appoint and commission a Deputy Supreme President for special purposes of instituting grand lodges and installing their officers, or otherwise, as may be required in any country, colony, province or portion of either of the same within the British Empire, where lodges are established, and not having any grand lodge; present at the

next regular session of the Supreme Lodge a full report of his acts during the recess of Supreme Lodge; hear and decide such questions of law as may be submitted to him by grand or subordinate lodges under the jurisdiction of the Supreme Lodge requiring immediate action, and all such decisions shall be binding on the lodges submitting the same until passed upon by the Supreme Lodge; and shall be paid from the funds of the Supreme Lodge his necessary office and travelling expenses while in the discharge of the functions of his office.

15. The Supreme Vice-President, in the absence of the Supreme President, shall assume the latter's station and duties, and appoint some member of the Supreme Lodge to fill the Supreme Vice-President's station and perform his duties; shall in such case preside over the Supreme Lodge, and legally exercise the powers and discharge the duties of the office; and in the event of the resignation, death, removal by suspension or expulsion, or physical incompetency of the Supreme President shall at once act as such, shall be notified of the name of any person seeking admission, and instruct the Inner Guard accordingly, and at all other times shall perform such duties as may be assigned to him by the Supreme Lodge or President. He shall not present any report to the Supreme Lodge.

16. The Supreme Secretary shall:

(1) Regularly attend and keep a just and true record of all the proceedings of the Supreme Lodge, or meetings of the Supreme Executive Council, transmit, if necessarily absent, the books and records to the Supreme Lodge; transmit to each officer and member of the Supreme Lodge a copy of the journal of proceedings as soon as printed, and likewise to each grand lodge as many copies thereof as the grand lodge has Past Grand Presidents and officers, and one copy for each subordinate lodge in their several jurisdictions, and one copy to each subordinate lodge under the immediate jurisdiction of the Supreme Lodge.

(2) Receive all revenues of the Supreme Lodge from whatever source, and deposit the same each day, to the various departments in a duly chartered bank in the name of the Supreme Lodge, Sons of England Benefit Society, forthwith notifying the Supreme Treasurer of each such deposit; receive all documents intended for the Supreme Lodge, and submit the same, at the proper time in session; preserve the archives, have charge of the books papers and other properties of the Supreme Lodge as well as the seal thereof, and affix the same to all documents whenever necessary, and deliver the same to his successor when required to do so by the Supreme President; call all meetings when ordered so to do

by the Supreme President; keep the accounts in a fair, clear and legible manner, showing all receipts and particulars of all disbursements; have said accounts closed and properly balanced by the 31st December in each year; make to the Supreme Lodge, at its regular sessions, a true and correct report of his work, together with an account of all moneys received and disbursed, with items in detail of all earnings thereon accrued from interest or other investments; place all the books, vouchers and papers appertaining to his office at the disposal of the Supreme Lodge or the Supreme Executive Council whenever required by the Supreme President, or at the disposal of the sub-committee on finance and audit, or auditors, when they shall call for the same; prepare all charters for Grand Lodges; notify officially all Grand Lodges, and the officers and the members of the Supreme Lodge of all sessions of the Supreme Lodge; carry on the necessary correspondence of the Supreme Lodge; keep a register which shall contain a list of all dispensations and charters granted to Grand Lodges, or dispensations issued for subordinate lodges; and a record of all Past Supreme Presidents and representatives entitled to a seat in Supreme Lodge.

(3) Require from all grand lodge secretaries a financial return of the assets and liabilities of each grand lodge, together

with the assets and liabilities and numerical strength and other particulars of membership of all subordinate lodges in each grand jurisdiction, annually, according to a form to be approved by the Supreme Executive Council, and similar returns every three months from the secretaries of all subordinate lodges under the immediate jurisdiction of the Supreme Lodge (in every case to be properly attested by the proper officers and bearing their appropriate lodge seal).

(4) Require from said subordinate lodge secretaries with such returns all candidates' applications and medical certificates filed with them during the previous quarter, and when received shall register and file the same, and forward an acknowledgment to the subordinate lodge secretary of the receipts, setting out the nature of such papers in detail.

(5) Prepare and issue a comprehensive report of the financial and numerical status and affairs of the Society biennially, including each and every department, together with a record of suspensions, expulsions and deaths; attest all orders on the Supreme Treasurer, and official papers and documents, perform such other duties as are required by the laws and regulations of the Society, and as the Supreme President, Supreme Executive Council, or Supreme Lodge may from time to time direct;

be furnished with an office and have regular office hours, and give notice to all grand lodges of the time at which he will so attend; have power to provide himself, at the expense of the Supreme Lodge, with such books, papers and stationery necessary for the fulfilment of his duties, and keep in his office a copy of the seal of each grand and subordinate lodge, under Supreme Lodge jurisdiction.

(6) Submit in The Record an itemized quarterly statement of receipts and expenditures, receive for his services, and that of any assistance he may require, such sums as the Supreme Lodge may from time to time determine; shall for the faithful performance of his duties give a guarantee company's bond approved by the Supreme President in the sum of \$3,000, the annual premium for which shall be paid by Supreme Lodge, and in default thereof the office shall thereupon become vacated, and shall be filled in the manner provided by the constitution; shall publish monthly returns of all death claims made on the Beneficiary Department.

17. The Supreme Treasurer shall receive from the Supreme Secretary certificates showing the daily deposits of the Society's revenues in the different departments in the bank; shall enter the same in proper books, and keep the accounts thereof in a fair, clear, and legible manner; shall pay

all orders duly certified to by the Supreme President and Secretary, with the Society's cheque; said cheque to be signed by the Supreme President and Supreme Treasurer, and countersigned by the Supreme Secretary; shall keep accounts of all disbursements, render a half-yearly statement to the Supreme President; shall place all books, vouchers and papers pertaining to his office at the disposal of the Supreme Lodge or the Supreme Executive Council when required by the Supreme President, and make to the Supreme Lodge at its regular sessions, a true and correct report of his doings, and shall receive for his services such sum as the Supreme Lodge may from time to time determine; shall for the faithful performance of his duties give a guarantee company's bond, approved by the Supreme President, in the sum of \$1,000, the annual premium for which shall be paid by Supreme Lodge.

18. The Supreme Chaplain shall open and close the Supreme Lodge with prayer, and perform all obligatory ceremonials as prescribed by the ritual or usages of the Society, and such other duties as comport with his office.

19. The duties of the Supreme Marshal, Inner and Outer Guards are such as are traditionally appropriate to their respective stations, or such as may be assigned to

them by the Supreme Lodge or Supreme President.

20. Three Supreme Lodge Trustees, who shall be members in good standing of the Supreme Lodge, shall be elected by ballot by the Supreme Lodge each session; and all the funds of, or held by the Supreme Lodge for any department, and which the Supreme Executive Council may deem unnecessary to be held for current use, shall be invested in the name of the Sons of England Benefit Society, in such securities as may be permitted by law, and approved by the Supreme Executive Council. Such Trustees shall report to Supreme Lodge through the Supreme Executive Council the nature of all securities in their possession, the amount invested and the terms of each investment in detail, and deposit in the vaults of the Society all securities or evidence thereof for safe keeping, and shall, for the faithful performance of their duties, give a guarantee company's bond approved by the Supreme President in the sum of \$1,000 each, the annual premiums for which shall be paid by Supreme Lodge.

21. Two Supreme Lodge Auditors, who shall be members in good standing in the Society, shall be elected by ballot by the Supreme Lodge at each regular session. They shall carefully audit the accounts and finances of the Supreme Lodge and every department thereof, and certify thereto

22. The Supreme President, Secretary, Treasurer and Trustees shall place their biennial reports before the Supreme Executive Council not later than the 1st day of June preceding each regular session of Supreme Lodge, and copies of such reports shall be forwarded to each Delegate to Supreme Lodge at least one month before each regular meeting of Supreme Lodge, and no proposed amendment, alteration or addition to the constitution shall be contained therein.

SUPREME SESSIONS.

23. Sessions of the Supreme Lodge shall be held biennially, commencing on the second Tuesday in August. Provided that at any session of the Supreme Lodge, a month and a day of meeting other than the foregoing may be selected for the next succeeding session by a two-thirds' vote of the members of Supreme Lodge present.

24. The place for the holding of each session shall be determined at the preceding session. Provided that should no quorum assemble at the time appointed, or within three days thereafter, the Supreme President or presiding officer, shall have power to adjourn the session, naming the time and place of next meeting of Supreme Lodge.

25. The Supreme President shall, on receipt of a requisition from a majority of

the lodges entitled to representation at Supreme Lodge, signed by the president and secretary of each lodge under the lodge seal, call a meeting of the Supreme Lodge in accordance with such requisition.

SESSIONAL PAPERS.

26. All business to be brought before the Supreme Lodge shall be entered and shall be forwarded to each Delegate to Supreme Lodge, and copies of such reports arranged on the sessional paper by the Supreme Executive Council, and be taken in the order entered. No subject shall be entertained of which notice has not been given at a former session or forwarded to said Supreme Executive Council and entered on the list above referred to, except the usual routine business. All proposed alterations and amendments to the Constitution shall be sent to the said Supreme Executive Council on or before the first day of March preceding each regular session of Supreme Lodge, and the same shall be printed and forwarded to the respective lodges not later than the first day of May following for their consideration. The exact wording of amendments, alterations and additions only shall be printed in the sessional paper. Direct repetitions shall be omitted. Notices for the sessional paper must emanate from the Supreme Executive Council, a member thereof or a grand or subordinate lodge

under the immediate jurisdiction of Supreme Lodge

THE SUPREME EXECUTIVE COUNCIL.

27. The Supreme Executive Council shall consist of the Supreme President, together with the immediate Past Supreme President, Supreme Vice-President, Supreme Secretary and Supreme Treasurer.

28. The Supreme Executive Council shall assist the Supreme President in enforcing the laws of the Society; shall consider and decide such appeals and points of law as are properly brought before it, which decision when promulgated by the Supreme President shall be binding, subject to the right of appeal to the Supreme Lodge in session, as laid down in this Constitution.

29. The Supreme Executive Council shall decide all matters and questions not provided for by the Constitution, and during the interim of the sessions of Supreme Lodge consider such matters as would naturally be referred to Supreme Committees when Supreme Lodge is in session, except when special matters are referred to either standing or special committees for their action during recess, to report to the Supreme President; shall have power to amalgamate any two or more subordinate lodges under the immediate jurisdiction of Supreme Lodge, if the majority of members in each

such lodge express by formal resolution, in regular lodge session, a desire for such amalgamation, and shall faithfully watch and protect the best interests of the Society.

30. The Supreme Executive Council may suspend or remove any officer for cause, such officer having the right to appeal to Supreme Lodge, and fill any vacancy not of executive office by appointment until filled by regular election. When a subordinate lodge, under the immediate jurisdiction of Supreme Lodge, declines to act in the case of a member who has been proven guilty by a court of competent jurisdiction of immoral or criminal conduct, the Supreme Executive Council may bring to trial and pass sentence upon such member, who, however, shall have the same right of appeal to Supreme Lodge as if he had been tried by the Arbitration Committee of the subordinate lodge.

31. The Supreme President, on the recommendation of the Supreme Executive Council, may authorize and establish the Society in any portion of the British Empire. The necessary expenses of instituting any grand lodge shall be paid by the grand lodge instituted, and the necessary expenses of instituting any subordinate lodge under the immediate jurisdiction of Supreme Lodge shall be paid by Supreme Lodge.

32. Any vacancy occurring in an executive office other than that of Supreme Presi-

dent, or in the Committee of General Purposes, which are elsewhere provided for, shall be filled by the majority vote of the Supreme Executive Council, and be proclaimed by the same.

MILEAGE.

33. The mileage and per diem allowance of representatives and delegates to the Supreme Lodge session shall be paid by the lodge represented. Such representatives and delegates shall receive the actual railway or steamboat expenses of going to and returning from (by a direct route) the place of Supreme Lodge meeting, and a per diem allowance of Three Dollars during the actual session of Supreme Lodge, as well as during the time occupied in so going and returning therefrom.

COMMITTEE OF GENERAL PURPOSES.

34. The Committee of General Purposes shall consist of the Supreme Executive Council and twenty members, who shall be elected by ballot from the members present at each session of Supreme Lodge, whose duties shall not commence until the close of such session.

35. The nomination of members for a place on the committee shall be made in writing and handed to the Supreme Secretary not later than ten o'clock of the fore-

noon of the day set apart for the election of officers. The list of nominees shall be printed on slips and distributed to the members immediately preceding the election of the committee.

36. The election of the committee shall be the first order of business on the afternoon of the day fixed for the election of officers. Any ballot marked for more than twenty members is hereby declared to be a spoiled ballot. The twenty members receiving the highest number of votes shall be declared elected. In the event of two or more receiving the same number of votes, a new ballot shall be taken on these names only.

37. The Supreme Secretary shall convene the Committee of General Purposes immediately at the close of such afternoon sitting. The committee shall proceed to organize by the election of its chairman, appointment of sub-committees, to prepare for the work of the next regular session.

38. The Committee of General Purposes shall give consideration to all matters referred to it by means of the following sub-committees, namely:

- (a) On Law and Legislation.
- (b) On Finance and Audit.
- (c) On Appeals and Grievances.
- (d) On Credentials and Returns.
- (e) On State of the Society.
- (f) On Written and Unwritten Work.
- (g) On Printing.

39. The Committee of General Purposes shall meet two days prior to the meeting of Supreme Lodge, and shall receive for their services the sum fixed from time to time by Supreme Lodge; and the committee or any sub-committee thereof, when engaged during recess, after closing of Supreme Lodge, shall receive the same remuneration.

40. No member of the Committee of General Purposes shall be eligible to act on said Committee during any session of Supreme Lodge, or during the two days immediately prior to any such session, unless he is a duly qualified delegate, or representative of a grand lodge or member, entitled to attend such session of Supreme Lodge, or is a member of the Supreme Executive Council, and no member of said committee shall be entitled to receive any remuneration from the Supreme Lodge for services on said committee during the time of the actual session of Supreme Lodge.

41. Should any vacancies occur on the Committee of General Purposes the same shall be filled by the members who unsuccessfully contested the seats at the previous election in the order of the number of votes received, the highest first.

RETURNS TO SUPREME LODGE.

42. Each subordinate and juvenile lodge under the immediate jurisdiction of

Supreme Lodge, shall make out regular returns of its work and business in accordance with the form sent or delivered to them by the Supreme Secretary, or other proper officer, and forward the same with the legal tax, dues and levies to the said Supreme Secretary, on or before the fifteenth days of January, April, July and October in each year, or, in default thereof, such subordinate lodge shall forfeit its right to representation at the next following session of Supreme Lodge. "And each Grand Lodge shall make out annual returns of its work and business, and submit same during the month of January in each year to the Supreme Secretary, showing in statistical form the standing of each Subordinate and Juvenile Lodge in its jurisdiction the amount paid by each such Subordinate or Juvenile Lodge for lodge physician's services and for sick and funeral benefits, the number of members receiving sick benefits, the number of weeks for which such sick benefits have been paid, and also a balance sheet of receipts and expenditures in detail, which must be duly audited and signed by the Grand Lodge Auditors, or, in default thereof, such Grand Lodge shall forfeit its right to representation at the next following session of Supreme Lodge." The penalty herein provided may be remitted in case of any grand jurisdiction by unanimous consent of the Supreme Lodge.

DISTRICT AND SPECIAL DEPUTY SUPREME PRESIDENTS.

43. Each District Deputy Supreme or Grand President, who takes precedence after members of the Supreme or Grand Executive Council, shall receive his appointment from the Supreme or Grand Lodge or Supreme or Grand Executive Council, and shall hold office for the term of two years from the 1st day of October following the election of the Supreme President, and nominations for the same shall be forwarded to the Supreme Secretary not later than August 31st. In districts where an Advisory Board is working, the Advisory Board shall have the privilege of nominating the District Deputy. All District Deputy Supreme or Grand Presidents who shall have attained the rank of past president, shall, when requested by the Supreme or Grand Executive Council, install the officers of all subordinate and juvenile lodges within their jurisdictions, or cause the same to be done by some competent member who has attained at least the rank of past president; and perform such other duties as the Supreme or Grand President or Supreme or Grand Executive Council may direct.

44. In the absence of the Supreme or Grand President or member of the Supreme or Grand Executive Council, a District

me or
ce after
Grand
e his
e or
Grand
vice for
day of
he Su-
for the
upreme
st. In
work-
e the
Deputy.
Grand
e rank
ted by
ouncil,
te and
ctions,
e com-
ast the
n such
Presi-
Coun-
me or
upreme
District

Deputy Supreme President may assist at the opening of all new lodges in his district; make an official visit to each lodge in his district during his year of office, and on all such official visits examine all books, papers and properties of the lodge, making a full report to the Supreme or Grand Secretary of the position and working of the lodge; endorse all applications of subordinate lodges for leave to change place of meeting; and have all applications for charters for new lodges in his district submitted to him for transmission with his recommendation thereon to the Supreme or Grand Secretary.

45. Each District Deputy Supreme or Grand President shall have power to answer such questions as may be sent to him by a lodge in his district in accordance with the Constitution of the Society, referring to the Supreme or Grand Executive Council on all matters of doubt and difficulty. He shall send to the Supreme or Grand Secretary a written report of his visits and rulings, and the condition of the lodges in his district, and perform such other duties as may be required of him by the Supreme or Grand Executive Council.

46. No District Deputy Supreme or Grand President shall have power to enter into any contract binding upon the Supreme, a grand or a subordinate lodge, without first obtaining the consent of the Supreme or Grand Executive Council.

47. The legal expenses incurred in special visits, when such is requested by the lodge, must be borne by the lodge visited, official visits being at the expense of the Supreme or Grand Lodge.

48. Should the office of District Deputy Supreme or Grand President become vacant from any cause, the Supreme or Grand Executive Council may appoint a duly qualified member in the district for the remainder of the term.

49. No District Deputy Supreme or Grand President shall, during his term of office, hold office in a subordinate lodge, unless by special dispensation from the Supreme or Grand Executive Council, and the election or appointment of any subordinate lodge officer to the position of District Deputy Supreme or Grand President shall ipso facto render such subordinate lodge office vacant, and necessitate a new election for the same.

49a In whatever Province or Territory a Grand Lodge may be instituted, the District Deputy wherever in the Constitution mentioned, shall be under the jurisdiction and report to such Grand Lodge, Executive, or President.

50. The Supreme Executive Council shall likewise have power in the interim of the sessions of the Supreme Lodge to appoint a Special Deputy Supreme President to in-

stitute a lodge or lodges of the Society in any unoccupied territory of the British Empire when circumstances warrant, and such Deputy shall be entitled to and receive the rank of past president.

APPEALS.

51. An appeal may be taken from the action or decision of any grand lodge, subordinate or juvenile lodge under the immediate jurisdiction of the Supreme Executive Council, and thence, if desired, to the said Supreme Lodge, by any member of such juvenile, subordinate or grand lodge, or member of the Beneficiary Department, or by any other person whose rights have been denied by such action or decision, upon giving written notice to said juvenile or subordinate lodge, grand lodge, or the Supreme Executive Council, as the case may be, as well as to the party or lodge in whose favor the decision rests of said appeal, within thirty days from and after such action or decision; provided that appeals and grievances to the Supreme Lodge, of which ten days' notice in writing must be given to the Supreme Secretary, shall be accompanied by six printed or typewritten copies in each case, the expense whereof shall be borne by the party taking the appeal, but in all cases the action or decision complained of shall be final and conclusive

until reversed on appeal. "And in like manner, wherever a Grand Lodge may exist, an appeal may be taken from the action or decision of any District Deputy, Subordinate, or Juvenile Lodge under the jurisdiction of such Grand Lodge to the Grand Executive, and thence, if desired, to the said Grand Lodge, by any member of such last mentioned Subordinate, or Juvenile Lodge."

52. All appeals taken from the action or decision of the Supreme Executive Council, or of a grand lodge to the Supreme Lodge, shall be received and passed upon by said Supreme Lodge, in its capacity of a court of last resort, and in all cases the action or decision of the Supreme Lodge shall be final and conclusive.

53. With the consent of a grand lodge an appeal may be taken by any subordinate or juvenile lodge, or member under its jurisdiction, from any action or decision of such grand lodge, to the Supreme Lodge; provided, however, that such consent shall not be necessary when a suspended or dissolved lodge, after having surrendered to its grand lodge all its effects, books and property, appeals from such decision; and provided, further, that any action or decision of a grand lodge, where there is drawn in question any provision of the Constitution or any enactment or authority of the Supreme Lodge, and the action or decision is against the validity of such pro-

vision, enactment or authority of the Supreme Lodge, may be examined and reversed or affirmed in the Supreme Lodge, upon appeal, to the same extent as could have been done upon an appeal legally taken from such action or decision.

54. Consent of a grand lodge to appeal must be obtained at the same session at which the action or decision from which such appeal is sought to be taken was had, and the proper record upon such appeal must be transmitted, properly attested, to the next session of the Supreme Lodge thereafter; provided, that the Supreme Lodge may, in extreme cases, allow the appeal to be entertained at not later than its next following session thereafter.

55. The Supreme Lodge may also adopt such additional rules and regulations as may be deemed necessary and proper to fully carry into effect the foregoing provisions.

GRAND LODGES.

56. When five or more subordinate lodges in good standing and working order, in any province or territory in Canada, or other country, colony or province in the British Empire, where no grand lodge exists, desires to have a grand lodge, they shall

petition the Supreme Executive Council in regular form.

57. Upon the receipt of the petition the Supreme Executive Council shall notify each lodge in the proposed jurisdiction, of the said application, and request every such lodge to call a special meeting within thirty days after the receipt of the communication from the Supreme Executive Council, for the purpose of deciding for or against the proposed establishing of such grand lodge. The decision of each such subordinate lodge shall be forthwith returned to the Supreme Secretary under the seal of the lodge. Provided the returns from the lodges within said proposed jurisdiction show a two-thirds majority of the members in favor of the establishing of such grand lodge, the Supreme Executive Council may proceed to institute the same.

58. The representatives of the lodges, together with all past grand presidents of the Society who are residents in the proposed jurisdiction, shall meet at such place as may be specified by the Supreme President, and proceed to organize a grand lodge, under the direction of the Supreme President or his Deputy, by electing a past grand president, a grand president, a grand vice-president, a grand secretary, and a grand treasurer, who shall constitute the grand Executive and hold office for a term of not less than one year.

59. The grand president, after the election, shall appoint the following officers, viz.: Grand chaplain, grand marshal, grand inner guard, and grand outer guard. Following the election and appointment of officers the Supreme President or his Deputy will proceed with the installations.

60. The grand lodge, as soon as organized, shall elect its representatives to Supreme Lodge, as hereinbefore prescribed in this Constitution; but, the said representatives must be past presidents.

61. A notice of their organization, together with a list of their officers, representatives to Supreme Lodge and past grand presidents, shall be immediately forwarded to the Supreme Secretary. The grand lodge, after organization, shall proceed to frame by-laws for its own government, not inconsistent with the laws promulgated by the Supreme Lodge, and submit the same for the approval of the Supreme Executive Council.

62. Grand lodges exist by virtue of authority from the Supreme Lodge or Supreme Executive Council during its recess. They shall conform to the ceremonies, work, regalia, jewels, charts, certificates and regulations prescribed by the Supreme Lodge in accordance with this Constitution, and shall (subject to the provisions hereof and right of appeal) have jurisdiction over all subor-

dinate lodges within their territorial limit and over the members attached to the same.

63. All power and authority not herein reserved to the Supreme Lodge, is hereby delegated to grand lodges, the Supreme Lodge, however, reserving to itself the right at any time, by proper amendments, duly adopted, to this Constitution, to resume any additional power necessary to promote the well-being and harmony of the Society.

64. Each grand lodge shall adopt by-laws for its own government, which shall be in accordance with the Constitution and Laws of the Supreme Lodge. All amendments thereto shall be submitted to the Supreme President, and be referred to the Committee of General Purposes, and when reported by that Committee and approved by Supreme Lodge, shall go into effect.

65. Grand lodges shall be composed only of past grand presidents, resident in the jurisdiction, grand officers, and "Delegates from Subordinate Lodges. Each Grand Lodge shall meet annually, unless a biennial session shall be determined upon by such Grand Lodge, with the approval of Supreme Lodge, and the Grand Executive shall meet quarterly or oftener, if required. The expenses of delegates to Grand Lodge shall be paid by the Subordinate Lodges

sending same; but all other expenses in connection with a Grand Lodge meeting shall be paid by the Grand Lodge out of its general fund. Each Grand Lodge shall have power to make by-laws for its own management and control, subject to the approval of Supreme Lodge or Executive Council. Each Grand Lodge shall, subject to approval of Supreme Lodge or Executive Council, have power to pass by-laws relating to the holding of Grand Lodge sessions, the necessary Grand Lodge quorum, the duties of Grand Lodge officers, amongst whom must be included Grand Lodge Auditors, the duties and powers of the Grand Executive, the mileage and per diem allowance of delegates to Grand Lodge, Grand Lodge committees, the making of quarterly returns to Grand Lodge from all Subordinate or Juvenile Lodges under its jurisdiction. Each Grand Lodge shall have control of all organization work, and the opening of new Subordinate or Juvenile Lodges under its territorial jurisdiction, and shall pay all expenses in connection therewith out of its general fund. Each Grand Lodge and Grand Executive shall have power to appoint District Deputy Grand Presidents, who must have attained the rank of Past President before appointment, and who shall have the supervision of the Subordinate and Juvenile Lodges in the respective districts to which they may be appointed, with power to install all

subordinate lodge officers therein, and perform such other duties as may be required of them by the Grand President, the expenses in connection with whose work and duties shall be fixed and paid by the Grand Lodge. Each Grand Lodge shall, subject to the approval of Supreme Lodge or Executive Council, have power and authority to fix and determine the amount of fees, contributions, and sick benefits of the members of all Subordinate and Juvenile Lodges within its territorial jurisdiction; but Sections 166 to 300 (included) of the Society's Constitution, together with Appendix "A" and Appendix "B," shall, subject to any foregoing provision respecting Grand Lodges, govern all Subordinate and Juvenile Lodges, and the members thereof, within each Grand Lodge territorial jurisdiction, except as the same may be amended or varied by any by-law duly passed by any such Grand Lodge, with the approval of the Supreme Lodge or Executive Council. Each Grand Secretary shall collect all moneys due to the Grand Lodge, keep a proper set of books, including a separate set of books for the Funeral Benefit Department, both as to Subordinate Lodges and Juvenile Lodges in such Grand Lodge territorial jurisdiction, issue to such Subordinate and Juvenile Lodges forms for quarterly returns, and submit to the Su-

preme Secretary during the month of January in each year the statement mentioned in Section 42. Each Grand Secretary and each Grand Treasurer shall, for the faithful performance of his duties, give a guarantee company's bond, approved by the Grand President, in the sum of \$1,000, the annual premium for which shall be paid by the Grand Lodge; and, in default thereof, the office shall thereupon become vacated. Each Grand Secretary shall have the custody of all official papers and documents, as well as the seal of the Grand Lodge. Each Grand Lodge shall pay the Supreme Lodge a capitation tax at the rate of forty cents per member per annum, within such Grand Lodge territorial jurisdiction, who do not owe more than three months' dues, and for all honorary members who pay an annual fee of \$5.00; and such capitation tax shall be remitted in two equal portions to the Supreme Secretary by each Grand Secretary half-yearly, in the months of January and July, in each year."

66. It shall be illegal for any grand lodge, or any individual member thereof, to disseminate any written or printed matter detrimental to the Society.

PAST RANK.

67. The grade or rank of past grand president shall not be conferred upon any member who has not served as grand presi-

dent, or a grand vice-president, who under the law serves out the unexpired term of grand president in case of vacancy in the office of grand president.

68. Any person having such past rank removing from one grand jurisdiction to another, and desiring to affiliate on a withdrawal certificate, must also present a credential of his past rank to entitle him to the same, and said credential shall bear endorsement of the grand secretary, together with the grand lodge seal.

ADVISORY BOARD.

69. Two-thirds in number of the Subordinate Lodges in any District for which a District Deputy has been appointed may, by petition in regular form, under the Seal of their respective Lodges, make application to the Supreme or Grand Executive Council, as the case may be, for the formation of an Advisory Board therein, accompanied by the names and addresses of four representatives to such Board from each Lodge so petitioning, elected as hereinafter mentioned.

70. Upon the receipt of such application and the same being found satisfactory, the Supreme or Grand Executive Council as the case may be may instruct the District Deputy to convene a meeting of said representatives in such district for the purpose

of complying with the petition and forming an Advisory Board, and at the same time to notify the secretary of every Subordinate Lodge in the district, not having so petitioned, of such meeting, to which each such Subordinate Lodge may be at liberty to send four representatives also.

71. The Advisory Board, when formed, shall be composed of the District Deputy of the District and four representatives from each Lodge in such district having so petitioned, as well as four representatives from any Subordinate Lodge in the district thereafter joining such Advisory Board, and all such representatives shall be White Rose Degree members, and shall be elected by ballot as in the case of and at the same time as Executive Officers of Subordinate Lodges. Provided, however, that the first election of said representatives may take place at any regular meeting of the Lodge.

72. Every such Advisory Board shall be conducted and carried on under a dispensation to be issued by the Supreme or Grand Executive Council, as the case may be, and the passwords used in Subordinate Lodges shall be taken up from all present before opening the meeting, and from all entering after the same has been opened. Provided, however, that any such dispensation may be suspended or cancelled for cause by the Council issuing the same.

73. Every such Advisory Board shall be at liberty to discuss all matters for the general benefit and advantage of the Subordinate Lodges in such district.

74. It shall not be obligatory upon any Subordinate Lodge in any such district not having so petitioned for the formation of such Advisory Board, to join same. Any Subordinate Lodge may at any time sever its connection with such Board and withdraw its representatives; and whenever such Board ceases to be represented by a majority of the Subordinate Lodges in any such District, the Supreme or Grand Executive Council may, in its discretion, withdraw or cancel the dispensation hereinbefore mentioned.

75. Every such Advisory Board may hold a meeting once during each quarter, at which a quorum consisting of not less than seven members must be present and the District Deputy shall within one week from such meeting forward to the Supreme or Grand Secretary, as the case may be, a full report of all business transacted at such meeting.

76. The expenses of any such Advisory Board, either for internal work or the expansion of the Society in such District, shall, if previously authorized by the Supreme or Grand Executive Council, be paid by the Supreme or Grand Lodge, as the case may be.

77. The District Deputy of every district in which an Advisory Board has been formed shall convene all meetings thereof, and shall preside at all meetings of such Advisory Board, and may appoint a Secretary, if necessary; but in his absence such Advisory Board may select one of its members to preside.

78. Every such Advisory Board shall have the authority to pass rules and regulations for the good government thereof, which will take effect upon receiving the approval of the Supreme or Grand Executive Council, as the case may be.

OFFICIAL PAPER.

79. There shall be an official paper for the Society, to be published and issued monthly, on or about the fifteenth day of each and every month, and delivered to every member of the Society in good standing, by mail, and shall be under the immediate control and management of Supreme Lodge.

GUARANTEE DEPARTMENT.

80. There shall be a Guarantee Fund to be made up by assessments (under the direction of the Supreme Executive Council) upon the Subordinate Lodges, which fund shall be for the purpose of indemnifying such lodges and the Beneficiary Department against any losses which may be sustained from default of their officers; such claims, when presented, shall be passed only upon the report of the Supreme Executive Council. The Supreme Executive Council shall also determine the conditions under which any such lodge may participate in the fund.

FUNERAL BENEFIT DEPARTMENT.

81. The Funeral Benefit Department shall be under the control and management of the Supreme Lodge, except where any Grand Lodge may exist, in which case the latter shall assume control and management of said department in accordance with the provisions of the Constitution.

OBJECTS.

82. The objects of the Funeral Benefit Department shall be to provide financial aid for members or the widows, heirs, devisees and nominees of deceased members who were in good standing in their respective lodges and in this Department at the time of their decease or at the time of the decease of their respective wives or children.

REVENUE.

83. The revenue of this Department, which must be kept solely for the purpose of paying funeral benefit claims, shall be derived from the registration fees and levies upon Subordinate Lodges.

EXPENSES OF MANAGEMENT.

84. This Department shall pay to the Supreme or Grand Lodge, as the case may

be, ten per cent. of the general annual expenses of such Supreme or Grand Lodge for the purpose of defraying the cost of management of the Department.

PAYMENT OF BENEFITS.

85. All funeral benefits shall be paid by the Supreme Lodge or Grand Lodge, as the case may be.

86. On the death after the expiration of twelve months from the date of the initiation of a member in good standing in his subordinate lodge, and also in the books of the Supreme or Grand Lodge, \$100, less any sum or sums he may be owing to his subordinate lodge or to the Supreme or Grand Lodge, shall be paid to his nominee, executors or administrators, or one-half such sum after the expiration of six months from said date; provided always, that no benefit shall be paid by this Department on account of the death of any member, if such death is caused by improper conduct on the part of such member, or through any accident while such member was engaged in any professional horse or bicycle race, or in professional acrobatics, prize-fighting rope or wire-walking, or as an aeronaut. After the expiration of twelve months from the date of his initiation, a member in good standing in his subordinate lodge and in the books of the Supreme or Grand Lodge shall be entitled

to \$50 upon the death of his wife, and \$15 upon the death of any of his children (step-children and adopted children excepted), between the ages of five and fifteen years, on condition that such wife and child or children were in good health and not subject to any bodily disease at the time of the initiation of such member, and had their names registered upon the books of Supreme or Grand Lodge, or to one-half such amount after the expiration of six months from said date. Provided that any member who engages any other than a duly registered medical practitioner to attend himself or any such wife or child in his or their sickness shall, in the event of his death or the death of such wife or child, have no claims upon the funds of this Department.

CERTIFICATE OF DEATH.

87. All claims on this Department shall be accompanied with a certificate of death on the form supplied by the Supreme or Grand Executive Council, and such certificate shall be signed by the president and secretary of the member's subordinate lodge, and stamped with the lodge seal, certifying to deceased member's financial standing.

REQUISITE REGISTRATIONS.

88. Every member marrying after having joined the Society shall forward to the

secretary of his subordinate lodge within one month thereafter, a notice of such marriage, together with a statement of his wife's health and religion, on the form prescribed by the Supreme or Grand Executive Council, and a medical certificate of good health, at his own expense, which notice, statement and certificate shall be forwarded by said secretary to the Supreme or Grand Secretary with the next regular lodge returns. Or in default of such notification the member shall forfeit funeral benefits on account of said wife's death not so registered. Any member remarrying after having once received a funeral benefit on account of the death of his former wife shall have no further claim upon this Department on account of the death of any subsequent wife. So soon as each child of a member not registered as above provided shall reach the age of five years, the member shall, for the purpose of registration, notify the Supreme or Grand Secretary of the fact upon the form prescribed for such purpose by the Supreme or Grand Executive Council, or in default of such notification, prior to the death of any such child, the member shall forfeit all funeral benefits on account of the death of any such child not so registered. Should a deceased member leave no nominee or executors, the subordinate lodge to which he belonged shall undertake his funeral, and may, after paying all expenses in con-

nection therewith, retain any balance for the benefit of the general fund of such subordinate lodge.

LIABILITY OF SUBORDINATE LODGE FOR FUNERAL BENEFITS.

89. Every subordinate lodge failing to send in returns or neglecting to pay funeral levies within one month after the stipulated periods for closing of its books, shall forfeit its claims upon this Department and the Funeral Benefit Fund, and shall be liable to pay from the funds of such lodge all death claims which may arise during such forfeiture; but on receipt by the Supreme or Grand Secretary of all such returns and levies in full, such lodge shall thereupon become entitled to receive from said Fund payment of all claims that may thereafter arise, and such only.

BENEFICIARY DEPARTMENT.

OBJECTS.

90. The objects of the Beneficiary Department shall be to provide, by the issue of certificates, financial aid for the widows orphans, heirs, devisees or nominees of deceased members who were in good standing in their respective lodges and in this Department at the time of death.

QUALIFICATIONS.

91. Financial and Honorary members between the ages of seventeen and forty-five in good standing in their respective lodges shall be eligible to join this Department. Should a member of this Department be expelled from his subordinate lodge for any cause, or withdraw from membership in it he shall cease to be a member of this Department; and in case of his death his representatives shall not be entitled to any benefit from the funds of this Department.

REVENUE.

92. The revenue of this Department shall be derived from fees for new certifi-

cates from monthly payments and interest thereon, which the Society through this Department is empowered to collect, hold and disburse.

APPLICATION FOR MEMBERSHIP.

93. Every application for membership must be made in open lodge, verbally or by letter, and committed to the form supplied by the Supreme Executive Council, and be countersigned by the president and secretary of the lodge to which the applicant belongs, and stamped with the lodge seal, and forthwith be forwarded by the secretary to the lodge physician for medical examination. The Supreme Secretary shall, after receiving the application from the lodge physician, submit the same to the Medical Referee; and if approved by said Medical Referee and the Supreme Executive Council, the Supreme Secretary shall issue a certificate of membership to the applicant. The first monthly payment shall be due and payable by the certificate holder immediately upon the issue of the said certificate by the Supreme Secretary. The age of candidates shall be fixed from the date of receipt of application by the Supreme Secretary. Should an application be rejected, the application fee, less the lodge physician's examination fee, shall be returned to the applicant within thirty days.

APPLICATION FEES.

94. The application fee for a certificate or \$250, \$500 or \$1,000 shall be \$1.00, which shall go to the subordinate lodge secretary. Any member desirous of increasing the amount of his certificate shall pay an application fee of \$1.00, which shall go to the said subordinate lodge secretary. Every applicant must pass a urinary examination. The medical examiner's fee, in each case shall be paid by the applicant to said examiner.

MONTHLY PAYMENTS.

95. On and after the first day of January, 1909, the following table of monthly payments—showing the cost at each age, under the several amounts that may be applied for—shall be in effect, and shall be due and payable on the said first day of January, and of each and every month thereafter by each such beneficiary member as may join said Department after said date, to his subordinate lodge secretary:

Age.	\$250	\$500	\$1,000
	Per Mth.	Per Mth.	Per Mth.
1719	.37	.74
1819	.38	.76
1920	.39	.78
2021	.41	.81
2121	.42	.84
2222	.43	.86
2323	.45	.89
2423	.46	.92
2524	.48	.95
2625	.49	.97
2725	.50	1.00
2826	.52	1.03
2927	.53	1.06
3028	.55	1.09
3129	.57	1.13
3229	.58	1.16
3330	.60	1.20
3431	.62	1.24
3533	.65	1.29
3634	.67	1.33
3735	.69	1.38
3836	.72	1.43
3938	.75	1.49
4039	.77	1.54
4140	.80	1.60
4242	.84	1.67
4344	.87	1.74
4446	.91	1.81

The above rates apply only to members joining the Beneficiary Department on and after the 1st day of January, 1909.

For the purposes of the foregoing table, the age of every applicant for a beneficiary certificate shall be computed as terminating at midnight preceding his next ensuing birthday.

95. A.—Provided that no delegate to Supreme Lodge shall vote on any question affecting the rates in the Beneficiary Department unless he be a member of such Department.

96. No applicant over 45 years of age shall be eligible to join the Beneficiary Department. Provided, moreover, that any applicant whose age is within 12 months of such age limit shall be required to furnish a registration certificate of birth, or, if unable so to do, shall produce other evidence as to his age satisfactory to the Supreme Executive Council.

97. On and after the first day of July, 1895, the following table of monthly payments by Beneficiary members over 45 years of age, who are already in this Department, showing the cost at each age under the several amounts that are carried by them—shall be in effect and shall be due and payable on the said first day of July, and of each and every month thereafter by each such beneficiary member to his subordinate lodge secretary:

Age.	Per Mth. Per Mth. Per Mth.		
	\$500	\$1,000	\$2,000
45 to 50	\$0.57	\$1.14	\$2.28
50 to 55	0.74	1.47	2
55 to 60	1.00	2.00	4.00
Over 60	1.34	2.67	5.34

98. The rates in the foregoing and hereinafter mentioned tables shall be computed according to the age of each beneficiary applicant at the date of receipt of application by the Supreme Secretary.

98A. Every member holding a beneficiary certificate shall, in addition to the foregoing monthly payments, be assessed and pay to his subordinate lodge secretary along with said monthly payments the sum of ten cents per month towards and for management expenses of this Department, which additional monthly payment of ten cents by each such beneficiary member shall be included in such subordinate lodge secretary's regular monthly statement and forwarded by him to the Supreme Secretary monthly, as provided by Section 116 of the Constitution.

CLASSES OF RISKS.

99. Applicants for, and those holding, beneficiary certificates shall from time to time be classified according to risk in three groups or classes, to be known as (1) or-

dinary, (2) hazardous, and (3) extra-hazardous.

100. The 1st or ordinary class shall comprise all those not included in the hazardous and extra-hazardous classes.

101. The 2nd or hazardous class shall include the following:

(a) Officers, crews and employees of ocean and inland steamers and sailing vessels.

(b) Employees on steam passenger and mail trains.

(c) Engineer, conductors, brakemen and firemen of freight trains.

(d) Yard masters not engaged in switching or coupling cars.

(e) Marble, granite and stone cutters.

(f) Members of fire brigades in cities and towns.

(g) Shovellers in elevators and coal vessels.

(h) Grinders of edge tools.

(i) Pilots.

(j) Quarrymen.

(k) Master miners, occasionally underground.

(l) Raftsmen.

(m) Oyster dredgers.

(n) Telegraph, telephone and other electric linemen.

(o) All deaf persons.

(p) All persons who have suffered the loss of an arm or leg or eye, or have a defective arm or leg.

(q) All those engaged in the sale or manufacture of spirituous liquors, and maltsters and wine clerks.

102. The 3rd or extra-hazardous class shall include the following:

(a) All persons engaged in blasting.

(b) All persons engaged in underground mining.

(c) Glass blowers.

(d) Divers.

(e) All those engaged in the manufacture of fireworks, powder cartridges and all explosives.

(f) Employees of lead works.

(g) Switchmen and yardmen engaged in switching and coupling cars.

(h) Professional gamblers.

(i) Slaters.

(j) Jockeys.

(k) Buzz band circular and gang sawyers of sawmills only.

(l) Soldiers engaged in actual warfare.

(m) Professional acrobats, aeronauts, prize fighters, rope and wire walkers.

103. The Supreme Executive Council may issue certificates to those coming within the 2nd or hazardous class at an advanced monthly payment or rate of twenty cents per \$1,000 over and above the sum required of a member coming within the 1st or ordinary class; but in no case shall any applicant coming within the 3rd or extra-hazardous class be eligible to enter this Department, and any member in the ordinary class changing his occupation to any one of the occupations herein classed as hazardous, must forthwith notify the secretary of his subordinate lodge, as well as give notice thereof by registered letter to the Supreme Secretary, who shall thereupon increase his rating accordingly; or in default such member shall forfeit all rights and claims to any and all benefits in connection with this Department, such forfeiture to continue until such notice is properly given as aforesaid, and until all arrears by reason of the difference in the rates of the ordinary and hazardous classes are paid.

104. Any member in the ordinary or hazardous class changing his occupation to any one of the occupations herein classed as extra hazardous, shall, ipso facto, forfeit all his rights as a beneficiary member of this Department, and shall also be required to forthwith notify the Supreme Secretary by registered letter of such

change. Provided that the Supreme Executive Council shall have full power in its discretion and upon such terms and conditions as it may see fit to impose, to reinstate or readmit into this Department any such person upon his ceasing to be engaged or employed in such extra-hazardous occupation, and upon his furnishing proof thereof satisfactory to said Supreme Executive Council, or may refuse so to do.

105. Any member in the hazardous class changing his occupation to one coming within the ordinary class shall be entitled, upon furnishing proof thereof satisfactory to the said Supreme Executive Council, to have his rate of assessment decreased to a corresponding rate in the ordinary class; provided such hazardous occupation has not, in the opinion of said Supreme Executive Council, been the means of rendering (through any accident or otherwise) such member a hazardous risk.

106. Should any one to whom a beneficiary certificate has been issued by this Department die during the continuance of such forfeiture as aforesaid, his beneficiary or beneficiaries or personal representative or representatives shall not be entitled to any benefit, payment or moneys under such beneficiary certificate, notwithstanding he may have continued regularly to pay the rates herein provided for the ordinary or hazardous class, as the case may be.

PROOFS OF CLAIM.

107. Upon satisfactory proof of the death of a member who is entitled to benefits from the funds of this Department, those entitled or claiming under the certificate or otherwise of such deceased member shall, as soon as possible, and before payment over of any moneys by the Society, produce and file with the Supreme Executive Council a properly certified copy of the will and probate thereof of the deceased, or in the event of the member dying intestate, evidence satisfactory to said Supreme Executive Council of such intestacy shall be furnished, whereupon the moneys shall be payable at the Head Office of the Society to his nominees under his certificate or will or his legal representatives, whichever shall be entitled, within 60 days from receipt by the Supreme Secretary of the proofs of his death, not exceeding \$250, \$500 or \$1,000, as the case may be; provided that such member was at the time of his death in good standing in the Society at this Department.

POWER TO MAKE SPECIAL ASSESSMENTS.

108. In the event of the monthly payments to the beneficiary funds of this Department not realizing within two months from the death of a certificate holder a sum

sufficient to meet the full amount named in the certificate or certificates, the Society shall not be required to pay or be held liable for any further sum than the amount realized by such monthly payments within the said two months. Provided, however, in lieu of having the amount mentioned in any certificate abated as above, the Supreme Executive Council, in its discretion, may at any time, by giving thirty days' notice by post, make an extra monthly call upon the certificate holders in this Department in order to pay the full amount of the certificate of any such deceased member, and any balance derived from any such extra call shall be carried to the credit of the reserve fund hereinafter mentioned; but not more than three such extra calls shall under any circumstances be made in any one year.

INCREASING CERTIFICATE.

109. Any member who may have taken out a certificate for \$250, and desiring to increase such amount to \$500 or \$1,000, or any member who may have taken out a certificate for \$500, and desiring to increase such amount to \$1,000, shall be permitted to do so, provided he shall not have reached his 46th birthday. The applicant for such increased amount shall be required to pass a second medical examination (for which he shall pay as heretofore

provided), and be charged for such increased amount, according to his age at the time of making such further application.

DECREASING CERTIFICATE.

110. Any member may discontinue paying upon any certificate, but shall forfeit all claims in respect thereof. A member in good standing in this Department holding a beneficiary certificate for more than \$250, and desirous of reducing such amount, shall give written notice of such intention to the Supreme Secretary and to the secretary of his subordinate lodge, and such change shall take effect at the beginning of the month following the receipt of such notice by the Supreme Secretary, provided the member shall have surrendered his said certificate to the Society, and forwarded the same to the Supreme Secretary, with 50 cents to defray the expenses of issuing new certificates for such reduced amount. Should such member desire however, at any time to again increase the amount of his certificate, he shall pay according to his age at the time of making such application, and pass a further satisfactory medical examination, for which he shall pay as hereinbefore provided.

BENEFICIARIES TO BE NOMINATED.

111. Each member shall nominate and designate in writing on his application, the person or persons to whom he desires the amount of his certificate to be paid, and shall have the right at any time to change the same, such nomination and designation to be witnessed by two members of the Society, with the lodge seal attached, which shall be forwarded by the lodge secretary to the Supreme Secretary, who shall cause the same to be entered in a book provided for that purpose, and the original placed on file and a new certificate issued, for which the member shall pay the sum of fifty cents.

RECORDS OF DEPARTMENT.

112. The Supreme Secretary shall keep a record of the proceedings of this Department, keep the books of accounts and conduct correspondence, collect and receive all moneys from the subordinate lodge secretaries due to the Department, and deposit the same as hereinbefore provided, prepare the certificates of membership and notices of all deaths or monthly payments; keep a record of the names of deceased members and of the amounts paid to their representatives; keep a record in the books of the Department of the names of the members who have paid, and those

who have not paid their monthly payments, also those whose applications have been rejected; send out necessary notices; and perform such other duties as may be required of him. His bond shall be made ample to include this Department.

EXECUTIVE POWERS.

113. The Supreme Executive Council shall approve of all medical examiners of this Department; shall have a right to submit any application for further medical examination to any of the medical staff decided upon, the cost thereof to be paid from the general fund of this Department, not exceeding one dollar; shall consider all applications for membership, and accept or reject the same; or may reduce the amount applied for and pass such applicants only for such reduced amount; determine under what class or group applicants and certificate-holders shall from time to time be rated; consider the reinstatement of members in arrears; see that the funds are properly invested; sanction the payment of all moneys drawn on the Supreme Treasurer; certify to all cases of death or disability.

114. Any member holding a beneficiary certificate containing disability provisions attached thereto shall on proper and satisfactory proof of total and permanent dis-

ability on forms supplied by the Supreme Executive Council, be entitled to receive 10 per cent. per annum of the amount of the certificate until one-half the amount thereof is received, provided the medical examiner approved by the Supreme Executive Council shall certify to his continued disability from year to year. The expense of such examinations shall be borne by such member. The remaining half of the amount of such certificate shall, on the death of said member, providing he was in good standing in the Society and in this Department at the time of his death, be paid to the person or persons entitled thereto.

114A. Any member having reached the age of seventy years, unable to follow his own or other occupation, and being in good standing in the Society and in this Department thereof, upon making application to the Supreme Executive Council upon the form supplied by such Supreme Executive Council, shall be entitled to receive 10 per cent. per annum of the amount of his certificate until one-half of the amount thereof shall have been so received, which shall be paid from the reserve fund. The remaining half of the amount of such certificate shall, on the death of said member, providing he was in good standing in the Society and in this Department, at the time of his death, be paid to the person or per-

sons entitled thereto from the general fund.

MEDICAL REFEREE.

115. The Supreme Executive Council shall appoint a Medical Referee who shall not be eligible to examine applicants for this Department, but may re-examine such applications when required by said Supreme Executive Council, to whom shall be submitted all applications for membership in this department for his report thereon, for which he shall receive the sum of fifty cents for each application, from the Management Fund of the Department.

SUBORDINATE LODGE SECRETARIES' DUTIES.

116. Subordinate lodge secretaries, whether under the immediate jurisdiction of the Supreme Lodge or under the jurisdiction of Grand Lodge, shall collect and transmit all monthly payments to the Supreme Secretary on or before the eighth day of each month, taking receipt for same, which shall be handed to the President, as per Rule of Order No. 13 in appendix A; furnish the Supreme Secretary with a list of all members of the Beneficiary Department and their standing in the lodge, and the names and addresses of those who have failed to pay their monthly payments

within the prescribed time, which shall be the first day of each month; keep a full and correct account between the Department and their lodge members; keep separate accounts of all beneficiary moneys in the lodge books and all such moneys received shall be remitted to the Supreme Secretary through the subordinate lodges by the secretaries thereof; and perform such other duties as may be required of them; and for their services as agents of this department, shall receive four per cent. on all moneys by way of monthly assessments collected by them for this Department.

MEMBERS IN ARREARS.

117. So soon as any member's beneficiary dues are in arrears he shall, without any act on the part of the Society or this Department, stand suspended from the benefits of this Department; but such suspended member may be reinstated if within one month from the date of his suspension he shall pay all such dues owing at the date thereof, as well as all dues that may have accrued up to the time of his reinstatement.

118. A member so suspended, whose dues are more than one month in arrear, but not four months in arrear, may be reinstated upon producing a certificate of good health from a regularly appointed

medical examiner, satisfactory to the Medical Referee and the Supreme Executive Council and upon paying all dues owing at the date of his suspension, as well as all dues that may have accrued up to the time of his reinstatement.

118A. A member so suspended, whose dues are more than four months in arrears, but not six months in arrear, may be reinstated upon producing a certificate of good health from a regularly appointed medical examiner satisfactory to the Supreme Medical Referee and the Supreme Executive Council, and in the event of his reinstatement he shall thereafter pay the rate according to his age at the time of his reinstatement.

119. On receiving the monthly returns from the subordinate lodge secretaries, the Supreme Secretary shall at once notify by registered letter every member of this Department who is returned to him as being in arrear for three monthly assessments, of his suspension, stating the amount owing by him to this Department, and particularly directing his attention to this section of the Constitution. The sum of 10 cents for each such notice sent shall be chargeable to and paid by each member so in arrear before his reinstatement.

FALSE STATEMENTS FORFEIT CLAIMS.

120. Any member who shall in his declaration and at the time of his admission, knowingly make any false statements as to his health, age or condition, or conceal any disease, or bodily infirmity, tending to shorten life, shall forfeit all claims to and benefits in this Department, and his certificate of membership shall be cancelled.

BENEFITS REVERTING TO THE BENEFICIARY DEPARTMENT.

121. In the event of the death of a member holding a beneficiary certificate, to the proceeds thereof or any part thereof no persons or persons claiming through said members are legally entitled, such proceeds shall revert to the Beneficiary Department of this Society.

PERSONAL ACTS VITIATING CLAIM.

122. Neither the Society nor this Department shall be responsible for the payment of any beneficiary claim, if death results from the persistent use of intoxicants or narcotics, or by other improper conduct of the certificate holder or by his committing suicide within one year from the date of joining this Department.

123. The Supreme Executive Council, upon receiving credible information that

a member of this Department is habitually using intoxicants or narcotics to such an excess as to endanger life or materially affect the risk thereon may cause due investigation to be made, and thereafter, if satisfied that such member is so doing, may suspend or expel such offending member from this Department, and from all benefits in connection herewith, and notice thereof shall be sent to the secretary of the suspended member's subordinate lodge as well as to the member himself, providing, however, that the suspended member shall have the right of appeal to the Supreme Lodge in session, in the manner provided in the Constitution.

124. The Supreme Executive Council may, in its discretion, reinstate any member so suspended, after the lapse of six months from his suspension, upon his passing such medical examination upon such form and before such medical examiner as may be prescribed by said Supreme Executive Council, provided all arrears of dues and assessments to the Department during the term of suspension, as well as any arrears due at the time of suspension and the cost of such examination be first paid; or, in the alternative, the said Supreme Executive Council may, in its discretion, in lieu of the payment of said arrears and charges, accept the fee prescribed for applicants in this Department, in which latter case such suspended member shall pay the

monthly dues and assessments prescribed for one of his age at the date of his reinstatement.

125. The Supreme Executive Council may, before so suspending any member, cause notice of such intention on its part to be given, sent or mailed to such member, and may, in its discretion, delay the order of suspension according to the circumstances of the case as may be deemed expedient.

RESERVE FUND.

126. It shall be the duty of the Supreme Secretary to set aside every month a sum equal to ten per centum of the beneficiary assessments received during the preceding month, which shall form the Reserve Fund of this Department. The amount so set apart shall be deposited in the manner hereinbefore provided, and the interest accruing thereon shall be added to such fund, and neither principal nor interest shall be used until the General Beneficiary Fund has been exhausted in payment of death claims and charges thereon duly authorized, subject, however, to Section 114A.

MANAGEMENT FUND.

127. A management fund shall be set apart in the following order, viz.: All fees for renewal certificates in addition to the

fund provided by section 98A of the Constitution shall be used for the following purposes: Printing notices, medical examiner's fees, Referee's fees, postage, stationery, account books, printing forms and necessary expenses of management, and the payment of fifteen per cent. of the general annual expenses of the Supreme Lodge.

MEDICAL EXAMINERS.

128. Each lodge shall appoint one or more duly qualified medical practitioners, subject to the approval of the Supreme Executive Council, who must, if practicable, belong to the Society. Candidates may apply to any medical examiner of this Department for examination, but in all cases shall be subject to a urinary test. The medical examiner shall carefully examine all candidates, and shall make a full report upon the form provided by the Department, and forward the same to the Supreme Secretary, being careful to designate precisely the nature of the applicant's occupation, for the purpose of having him properly rated under Sections 99 to 102 (inclusive).

CERTIFICATES.

129. The Supreme Secretary shall furnish each member of the Department with a certificate of membership signed by him-

self and countersigned by the Supreme President, bearing the Supreme Lodge seal, which shall contain the terms and conditions upon which the same is issued, and shall upon payment thereof be surrendered to the Supreme Secretary by the heirs, nominees, devisees, or legal representative of the deceased member, with a release endorsed thereon in full of all demands.

130. Any member whose original certificate shall have become mutilated, destroyed or lost, on producing satisfactory evidence thereof, shall be supplied with a new certificate on payment of fifty cents, which shall be marked "Duplicate."

131. Every member of this Department shall be governed by all the laws now in force or which hereafter may be enacted.

ORDER OF BUSINESS AND RULES OF ORDER IN RELATION TO SUPREME LODGE.

132. The Supreme Lodge having been opened in proper form, the Supreme President shall call for the Report of the Committee of General Purposes on Credentials and Returns, and upon its reception and adoption, the Supreme Lodge shall proceed to business.

133. The minutes of the last regular and intervening meetings shall be read and passed upon.

134. The reports of the Supreme Officers shall then be presented and referred to the Committee of General Purposes.

135. Petitions and memorials shall be presented read and referred to the said committee.

136. The Supreme President shall call for:

(1) Reports from the Committee of General Purposes.

(2) Reports of Special Committees.

(3) New business.

137. The foregoing order of business may be transposed at the direction of the Supreme Lodge, subject to section 158.

138. All elections, except that for scrutineers, shall be by ballot.

139. On the call of five members, the yeas and nays shall be taken on any question, and when so taken shall be entered on the journal.

140. No motion shall be subject to debate until it has been seconded and stated by the presiding officer, and every motion shall be reduced to writing at the request of a member.

141. When a question is before Supreme Lodge no motion shall be received, unless it be to adjourn, the previous question, to lay on the table, to refer, to postpone in-

definitely, to postpone to a definite time, to re-commit, or to amend, and the same shall take precedence in the order of enumeration. The first three shall be decided without debate.

142. When a subject has been indefinitely postponed, it cannot again, during the same session, be taken up and considered; nor can a subject which the Supreme Lodge has refused to re-consider be taken up at that session.

143. On the call of three members a majority of the Supreme Lodge may demand that the previous question shall be put, which shall be in the following form: "Shall the question be now put?" Pending the decision thereof no further debate shall take place, and should such decision be in the affirmative the vote shall then be taken, first, on any amendments that may be pending, and immediately thereafter on the original motion.

144. When the reading of any paper or other matter is called for, and the same is objected to by any member, it shall be determined by vote of the Supreme Lodge without debate.

145. Before putting a question, the presiding officer shall ask: "Is the Supreme Lodge ready for the question?" If no member rise to speak, he shall rise and put the question. While the presiding off-

cer is putting a question or addressing the Supreme Lodge no member shall be allowed to leave or cross the room, or enter into private discourse; and after he shall have risen to put the question no member shall speak upon it.

146. No member shall be permitted to speak or vote unless occupying the place designated for him.

147. While a ballot is being collected, no motion can be entertained, or debate or explanation permitted.

148. Every officer and member shall be designated by his proper title or office, according to his rank in the Society.

149. Every member, when he speaks or offers a motion, shall rise and respectfully address and be recognized by the presiding officer; and while speaking he shall confine himself to the question in debate, avoiding all personalities and indecorous language, as well as all reflections upon Supreme Lodge or any of its members.

150. Should two or more members rise to speak at the same time, the presiding officer shall decide which is entitled to the floor, and no member shall interrupt or disturb another while speaking, unless he rise to a point of order for words spoken.

151. If a member, while speaking, should be called to order, he shall, at the

request of the chair, taken his seat until the question of order is determined, when he may again proceed.

152. Any decision of the presiding officer may be appealed from by any member, and in such case the question shall be: "Shall the decision of the chair stand as the judgment of Supreme Lodge?"

153. No member shall speak more than once on the same question without permission, except the mover of the motion, and then not until all the members wishing to speak have had an opportunity to do so; and no one shall speak longer than five minutes on any question, unless by permission of Supreme Lodge.

154. When a petition, memorial or communication is presented, a brief statement of its contents shall be made by the introducer or the presiding officer, and after it has been read, a brief notice of its purport shall be entered upon the journal.

155. When a blank is to be filled, the question shall be taken first upon the highest sum or number, and the longest or latest time proposed.

156. Any member may call for the division of a question, when the sense admits.

157. After any question, except one of indefinite postponement, or one which the Supreme Lodge has refused to re-consider,

has been decided, any two members who voted in the majority may, at the same or next sitting, move for a re-consideration thereof but no discussion of the main question shall be allowed until reconsidered.

158. Except by consent of three-fourths of the members present, no new business shall be entertained at any sitting until the regular order of business has been disposed of. Subject to the foregoing, the Committee of General Purposes shall present the daily "Order of Proceedings" in printed form.

159. A committee appointed at one session to perform a duty are bound to report, although some of the members of the committee have ceased to be members of the Supreme Lodge.

160. Any member has the right to protest, and with the approval of Supreme Lodge, have an epitome of his protest spread upon the journal.

161. Every member is bound to vote, serve on committee, and accept nomination unless excused by Supreme Lodge.

162. No more than two amendments to a proposition shall be entertained at the same time; that is, an amendment, and an amendment to the amendment, and the question shall be first taken on the latter.

163. All motions and resolutions shall be in writing or printed, and with other documents presented by any member for consideration, and required to be read, shall be sent to and read from the desk of the Supreme Secretary.

164. Any proposition offered which shall require an entry in full upon the journal, shall be submitted in duplicate, either in writing or in print, and on one side only; it shall be on paper not less in size than half a page of foolscap. All resolutions and legislative measures shall be referred to the Committee on General Purposes, and be reported by it for action thereon by the Supreme Lodge.

165. In the event of any dispute arising, whereby none of the foregoing rules decide the case, recourse shall be had to Bourinot's Manual of Parliamentary Procedure, which shall decide the case.

SUBORDINATE LODGES.

166. Subordinate lodges shall be constituted by virtue of charters granted by the Supreme or any Grand Lodge or the Supreme or any Grand Executive Council.

COMPOSITION.

167. Each subordinate lodge shall consist of not less than twelve duly qualified and initiated members of the Red Rose Degree, and may become incorporated after formation.

APPLICATION FOR MEMBERSHIP.

168. (1) Every application for membership must be upon the form prescribed and provided by the Society, and shall be accompanied by the proposition fee. Such application form must be signed by the applicant, stating that he is an Englishman within the constitutional definition of that term, his age, where born, residence, occupation, religion, and wife's religion. He shall furnish medical certificate as hereinafter provided, and declare his wife and children, if any, to be in good health, if such is the fact, his ancestors' nationality, whether he has ever been a member of the Society or was ever rejected, and if so,

when and where. Such application form shall be endorsed by two members of the Society, and shall be read to the lodge by the secretary and referred to the investigating committee, barring anyone who may have recommended the applicant. The committee shall report upon the character and qualifications of the applicant at the next regular meeting of the lodge.

(2) No application for membership shall be withdrawn after it has been referred to the committee, except by consent of the lodge, and all cases so referred shall be balloted for upon the report of such committee, whether favorable or unfavorable.

(3) No rejected candidate shall be re-proposed for membership until the expiration of three months after his rejection. The application and medical certificate produced in compliance with the section next following, with all the terms and declarations therein contained, shall form part and parcel of the contract between the member and Society, including the member's subordinate lodge for the time being.

(4) All applications and medical certificates so filed in the lodge shall be remitted to the Supreme or Grand Secretary by the subordinate lodge secretary with the regular returns. The above provisions and stipulations as to health shall apply to all

members joining any subordinate lodge by clearance certificate from any other subordinate lodge or from the Supreme or Grand Executive Council.

(5) Any misstatement made by an applicant on the application form or upon the medical examiner's certificate as to his bodily health, shall exempt any subordinate lodge of which he may thereafter be a member, as well as the Society, from the payment of any sick benefits or funeral benefit on account of his death; and, if married, and misstatement as to his wife's health shall disentitle him to receive from the society any funeral benefit on account of her death.

(6) If the applicant, being married, is unable to make satisfactory declaration as to the health of his wife and children, he shall give the Society a release from the payment of any funeral benefit on account of her or their deaths as the case may be.

CERTIFICATE OF HEALTH.

169. Every candidate before being balloted for as a financial member entitled to sick and funeral benefits shall produce a certificate of good health, signed by the physician of the lodge he wishes to join, and upon the form prescribed and approved by the Supreme Executive Council, and every candidate for financial membership in the Beneficiary Department only shall

secure a certificate of good health on the form prescribed by the Beneficiary Department for such purpose and approved by the Medical Referee, of which latter certificate notice shall be forwarded by the Supreme Secretary to the secretary of the subordinate lodge aforesaid. The certificate shall also be signed and certified by the candidate himself.

FORMATION OF LODGES.

170. Any body of twelve or more Englishmen, who desire to become members of this Society and to form a lodge, may communicate to the Supreme or Grand Secretary their intention. They shall procure certificates of good health, according to the prescribed form, from a duly qualified physician, signed also by each applicant; fill out the usual application form for membership as to character; pay the proposition fee for each person, and shall forward the same to the Supreme or Grand Secretary. The Supreme or Grand Secretary shall, on receipt of same, apprise the Supreme or Grand President thereof, who after full investigation shall appoint a time for the formation and opening of the lodge. They shall be initiated by and receive the Red Rose Degree from some Supreme or Grand Lodge officer appointed for that purpose who shall deliver the charter. Provided, that no new lodge

lodges already exist in a district or municipality, until the written consent shall have been obtained of the lodge or a majority of the existing lodges in such district or municipality, and such consent has been transmitted through the District Deputy, with his recommendation to the Supreme or Grand Executive Council. All moneys received at the formation of a lodge by the instituting officer shall be credited to the lodge. The charter shall designate the locality in which such lodge shall be held, and no change shall be made of such locality except with consent of the Supreme or Grand Executive Council. Subject as above, twelve members in good standing in the Society who desire to form a new lodge may apply for a charter to the Supreme or Grand Executive Council.

CHARTER MEMBERS.

shall be established where a lodge or
171. Members shall be received as charter members who join within the time designated by the Supreme or Grand Executive Council.

DISPLAY OF CHARTER.

172. Every lodge shall display its charter in some conspicuous part of the lodge room, and it shall not be taken therefrom without authority from the Supreme or

Grand Lodge or Supreme or Grand Executive Council.

MEETINGS.

173. Subordinate lodges shall hold stated meetings at least twice in each month, two weeks elapsing between each meeting. They may, however, hold meetings at longer intervals by dispensation from the Supreme or Grand Lodge or Supreme or Grand Executive Council, and shall transact all business in the Red Rose Degree, except business referring to the White Rose Degree, which shall be transacted in White Rose meetings only. Provided that no meeting of any lodge of this Society shall be held in any hotel, or building wherein intoxicating liquors are sold. Intoxicating liquors shall not be brought into the lodge room during the session of the lodge. Smoking shall be prohibited during the lodge business.

QUORUM.

174. Seven members, including one qualified to preside, shall constitute a quorum for the transaction of business. If, however, not more than seven financial members be present, no appropriation of money shall be made unless by unanimous consent. Provided, however, where the membership does not exceed 25. The

quorum may by by-law be reduced to five, in which case, however if not more than five financial members be present, no appropriation of money shall be made unless by unanimous consent.

BALLOTING FOR CANDIDATES.

175. Every applicant shall be balloted for by secret ball ballot, and, if approved, shall be admitted. Should three or more black balls appear against the candidate, and a request for a new ballot be made, the ballot shall be repeated immediately, and should they reappear, he shall be declared rejected, and no other ballot shall be taken in his case for the space of three months thereafter. Provided, that when two or more candidates are to be balloted for, the presiding officer may take the ballot for all at the same time; should the necessary number of black balls for rejection appear, a ballot for each candidate shall be taken separately.

INITIATION OF CANDIDATES.

176. (1) Every candidate for membership must be initiated within three months after being proposed, or the proposition money shall be forfeited, but he may be re-proposed. Proposition fees so forfeited shall become part of the general fund of the lodge. Should it, however, appear that

such candidate was unavoidably absent, the lodge may by a majority vote grant a further extension of time, not exceeding three months. No candidate shall be proposed and initiated the same night, without a special dispensation, except at the institution of new lodges.

(2) Every candidate upon being initiated shall be furnished with a printed copy of the Constitution of the Society, and a contribution card, and shall immediately after his initiation subscribe his name in a registration book, which shall be kept by every subordinate lodge in accordance with the form prescribed by the Supreme Executive Council.

(3) A candidate for membership residing in a jurisdiction other than the one in which his proposition is offered, and in which he has been balloted for and accepted, may be initiated in the jurisdiction in which he resides with the written request of the subordinate lodge holding such proposition.

CLASSES OF MEMBERSHIP.

177. (1) Financial members are such as belong to the sick and funeral benefit department, or the beneficiary department, or both; but no one shall be a financial benefit member of more than one subordinate lodge. All lodges shall have power to admit honorary members; and such

members shall be entitled to vote on all matters except financial business, subject, however, to sub-section 3 hereof.

(2) Any financial member desiring to become an honorary member may do so on payment in full of all dues to date of application, and of the annual fee for honorary membership. Any honorary member not over 50 years of age, desiring to become a financial member of the sick and funeral benefit department may do so on the production of the lodge physician's certificate of good health, upon the regular form prescribed by the Supreme Executive Council, as in the case of new members, and upon paying one-half of the initiation fee required therefor.

(3) Any honorary member paying the sum of \$5 per annum shall be eligible to hold any office in his subordinate lodge, subject to section 180, and to vote on all financial questions.

TIME FOR NOMINATION AND ELECTION.

178. Officers of subordinate lodges shall be nominated and elected at the first meeting in December; provided, however, that where such elections cannot be completed for any sufficient cause at such meeting, the same may be completed at any meeting prior to installation of offi-

cers. One delegate to Supreme Lodge from each subordinate lodge under the immediate jurisdiction of Supreme Lodge, shall be nominated and elected at the first meeting in December of the year immediately preceding each regular session of Supreme or Grand Lodge. No member shall be nominated if absent, unless he has previously notified the president or secretary of his subordinate lodge in writing of his willingness to serve if elected, and any member unwilling to hold office must decline to do so when nominated. Provided that any member allowing himself to be elected to office, and then declining to serve, shall be fined fifty cents.

RIGHT TO VOTE AT ELECTIONS.

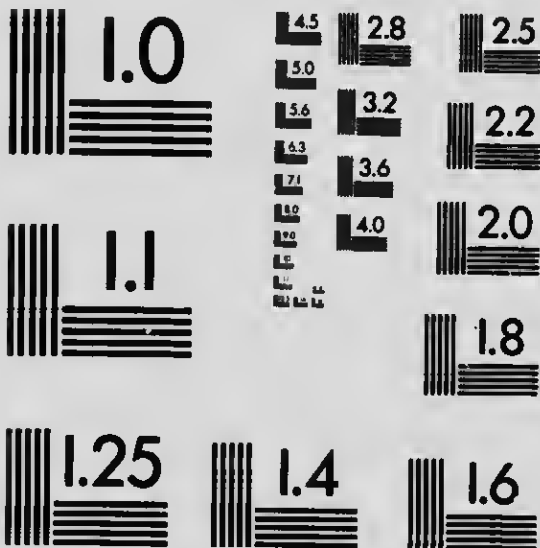
179. Every member shall have the right to vote at all elections who does not owe more than three months' dues, but not otherwise.

ELECTIONS AND QUALIFICATIONS OF OFFICERS.

180. All officers shall be elected for twelve months except physician or physicians, who shall continue in office during the pleasure of the lodge; but in the event of an election of physician or physicians becoming necessary at any time, he or they



(ANSI and ISO TEST CHART No. 2)



APPLIED IMAGE Inc

1653 East Main Street
Rochester, New York 14609 USA
(716) 482 - 0300 - Phone
(716) 288 - 5989 - Fax

shall be elected by ballot at a meeting specially summoned for such purpose. All executive officers (including the chaplain and first committeeman), together with the delegate to Supreme or Grand Lodge, and alternate delegate, if desired, shall be elected by ballot. The majority of all ballots cast shall be necessary to a choice. In case of a tie the voting shall continue until a choice be made. In the case of no election, the name of the member receiving the lowest number of votes at such balloting shall be withdrawn. In case where there are two to be elected, and one candidate receives a majority vote and is declared elected, the name of the member receiving the lowest number of votes shall not be withdrawn, but shall participate in the next ballot. Ballot papers used at each and every election shall, immediately after the declaration of the result of the ballot, be sealed in an envelope, endorsed by the scrutineers for what election the same were cast, and deposited with the lodge secretary, who shall keep the same intact for thirty days. If during that time no protest be entered in writing against the result of any ballot, the same shall be destroyed without being opened by the secretary in the presence of the president of the lodge. In case of a protest being made, such protest along with the envelope or envelopes containing the ballots, shall be delivered intact by the secretary, or

transmitted by registered letter to the Supreme or Grand Secretary, who shall lay the same before the Supreme or Grand Executive Council to be dealt with promptly. At every election three scrutineers shall be appointed by the presiding officer of the lodge. No member nominated for office shall act as scrutineer in the election for which he is so nominated. All other officers and the other members of the managing committee may be elected by show of hands, but in either case the highest number of votes shall elect. All executive officers must have taken the White Rose Degree previous to installation, including the chaplain. Every delegate must have the White Rose Degree, be in good standing in his subordinate lodge, and have filled an executive office therein for at least one month. No member shall hold more than one executive office. No executive officer shall hold non-executive office, except that of chaplain, physician or delegate. No member shall be eligible for the office of president unless he has filled some executive office in his subordinate lodge for at least one month, nor for the office of Secretary unless he has filled an office therein for one month. Any honorary member is eligible for the office of chaplain or auditor.

VACANT OFFICES.

181. Every vacancy caused by the death, removal, suspension, resignation or otherwise of any officer or delegate to Supreme or Grand Lodge, shall be filled in the manner of original selection to serve the residue of the term, and the nomination and election thereof may be made at the meeting at which such vacancy may occur. Every officer shall serve at least six months to entitle him to the honors of the term. In the temporary absence of a president of a subordinate lodge, and of the vice-president, the senior past president present shall preside. In the absence of all officers entitled to occupy the chair, the secretary shall call the lodge to order and proceed to fill the chair by vote of the lodge. Should any officer be absent from more than four meetings during his term of office, such office shall be declared vacant by the presiding officer upon a majority of the members present at any lodge meeting voting therefor upon the motion of any member.

OFFICERS TO BE ELECTED.

182. Each subordinate lodge shall elect its own officers, whose titles shall be—president, vice-president, chaplain, secretary, assistant secretary (if necessary), treasurer, managing committee, inner guard, outer guard, physician or physi-

cians, auditors, trustees and delegate to Supreme or Grand Lodge. The immediate past president, president, vice-president, secretary, treasurer, first committeeman and chaplain (when a financial member) shall constitute the executive officers.

INSTALLATION OF OFFICERS.

183. The installation of officers shall take place the first meeting night in the year. No officer shall be installed unless he has fully paid to the lodge the amount of all his dues and claims of whatsoever nature then accrued, and no officer shall be installed by proxy.

OFFICERS' DUTIES.

184. Officers shall watch over and protect the interests of their lodge, and faithfully discharge their respective duties. Upon retiring from office they shall hand over to their successor all moneys, books, papers, documents, vouchers, seals, and everything pertaining to their respective officers in their common or individual custody.

185. The president shall preside in the lodge, enforce a due observance of the Society's constitution and a proper respect for the Supreme or Grand Lodge; see that the lodge officers and members of committees perform their respective duties;

caused to be summoned special meetings when he may deem it necessary, or when required by a vote of the lodge, or by a requisition signed by at least one-third of the members thereof—provided seven days' notice be given stating the object for which the special meeting is called, and only such business as therein specified shall be transacted at such meeting, unless any such special meeting be called for a regular meeting night, when such special business as contained in the notice may be discussed under the order of General Business; declare the results of all ballots for membership; sign all orders for the payment of moneys; open and close the Lodge at the appointed time; shall be an ex-officio member of all committees; have a vote by ballot, but not otherwise, unless there be a tie on any question upon which an open vote has been taken, when he shall have the casting vote; shall neither move nor second a resolution, but shall put the same, if not in conflict with said constitution, to the meeting; shall be personally responsible for the properties of the lodge and for the proper execution of the bonds required to be given by officers of the lodge, and for all moneys received by them, until such bonds are duly signed and in his possession; shall have the power, should the auditors fail in the performance of their duties within the specified time, to appoint substitutes.

186. The past president shall assist in the ritualistic work of the lodge, and perform such other duties as may be delegated to him by the president.

187. The vice-president shall assist the president in maintaining order; examine the ballot box after all balloting, and declare the result to the president; assist in the initiation of candidates, and in opening and closing the lodge; receive the name of any person requesting admittance, and instruct the inner guard accordingly; see that proper respect is paid to the Society's officers; visit, when practical, in conjunction with the managing committee, all members owing more than three months' dues; preside, in the absence of the president, over the lodge, and perform such other duties as are set forth in the Constitution.

188. The Secretary shall:—

(1) Take a correct minute of all that is done at each lodge meeting; take charge of all lodge books and the lodge seal; make the necessary reports to the Supreme or Grand Secretary as set forth in the official return forms.

(2) Report immediately to the Supreme or Grand Secretary the names of all members reinstated, who were returned as in arrears, remitting the capitation tax and funeral levy for the same; prepare and present to the lodge annually a statement

(which may be printed for distribution, if desired), showing the financial standing of each member in the lodge, and of those in the Beneficiary Department.

(3) Keep a black book in which the names of all rejected candidates and expelled members shall be entered by him, and conduct all lodge correspondence.

(4) Notify all members of election of officers and delegate to Supreme or Grand Lodge at least seven days prior to such election.

(5) Collect all fees, contributions, fines or other moneys payable by members to the lodge; pay over before the close of each lodge meeting all moneys so collected since the close of the previous lodge meeting to the treasurer, taking his receipt therefor, or in his absence shall, within forty-eight hours thereafter, pay over to him the same; provide the lodge physician every three months with a list of those members eligible for his attendance; see that no member receives any benefit who is not entitled thereto; from time to time notify the lodge physician of the names and addressess of the managing committee; summon all special meetings of the lodge when so ordered by the president; sign all orders for payment of moneys; examine the black book in reference to the admission of candidates, and see that the law in relation thereto is complied with; pre-

are at the end of the months of March, June, September and December in each year, a list of all members of the lodge, with addresses, who owe three months' dues or more, and hand the same to the vice-president; immediately notify, upon the receipt of a notice from a member declaring on the sick fund of the lodge, the first managing committeeman, and two members residing nearest the sick member's residence, to visit him.

(6) Notify the Supreme or Grand Secretary of the rejection and expulsion of all candidates and members from his lodge, within seven days after the same shall occur; inform every candidate of his rejection, provided his proposer declines to do so, and of his acceptance, if elected; notify every candidate to attend the medical officer for examination immediately after his proposition is accepted by the lodge.

(7) Close his books on the last days of March, June, September and December in each and every year, and have them ready and balanced for the auditors' inspection within five days thereafter, and attend the auditors with the same.

(8) Forward to the Supreme or Grand Secretary with each regular report the name, age, birth-place, date of death and cause of death of any member who may have died during the term; upon receipt

of funeral benefit moneys from the Supreme or Grand Lodge, enter the same in the lodge books and pay such moneys over to the subordinate lodge treasurer; perform any duty pertaining to his office not provided for by this constitution.

(9) Give a bond to the lodge in the sum of at least one hundred dollars (\$100) for the faithful performance of his duties; provided that should the lodge membership exceed fifty, a bond shall be given at the rate of two dollars per member for all members in good standing.

(10) Make regular returns to the Supreme or Grand Secretary upon forms supplied for that purpose of such information as may be required for the purposes of the Society; forward such returns with the capitation tax, and the amount of all lodge accounts due Supreme or Grand Lodge, together with all candidates' applications and medical certificates in his hands on or before the 15th days of January, April, July and October in each and every year, placing a duplicate copy of such returns on file with his lodge papers; and for his services shall receive such remuneration as may be determined by his lodge.

(11) Provided that any subordinate lodge secretary who shall have served five consecutive years in such office may, if his lodge so decide, rank as a past president.

189. The treasurer shall receive from, and give a receipt to the secretary for all moneys received by him; deposit after every meeting in a separate banking account all moneys over and above \$50 in some chartered banking institution or post office savings bank to be named by the lodge, in the name of the lodge trustees; be responsible for the safe keeping of the lodge bank book; pay all orders when properly signed and stamped with the lodge seal; receive from the trustees all moneys withdrawn from the bank; pay over all funeral benefit moneys received by him, to the parties entitled thereto; close his books on the last days of the months of March, June, September and December in each and every year; attend and produce his books and vouchers when required by the auditors; and shall give a bond to the lodge in the sum of two hundred and fifty dollars for the faithful performance of his duty; and may receive such remuneration for his services as shall be decided on by the lodge; and may, after having served five consecutive years in such office rank as past president, if his lodge so decide.

190. The chaplain shall assist in opening and closing the lodge, in initiating candidates, and at the burial of any deceased member.

191. The managing committee of each lodge shall consist of not less than three and not more than six members; strictly inquire into the character of every candidate and ascertain if he has ever been a member of this Society or proposed in a lodge thereof, and report at the following meeting; look after the welfare of the sick and those receiving benefits; receive from the treasurer sick benefits and give a receipt for the same; hand the same over to those entitled thereto and return to the treasurer the receipts of the recipients; report at every meeting the condition of those receiving sick benefits; be responsible for the proper visitation of sick members, either by visiting such themselves or having qualified members of the lodge, whom they are hereby empowered to call on for assistance, to do so; conduct all candidates for initiation into the lodge room; assist at the opening and closing ceremonies; be responsible for the safe-keeping of the lodge regalia; assist the vice-president in visiting members in arrears; and for their services may receive such remuneration as shall be decided on by the lodge subject to fines for neglect of duties and absence from meetings of the lodge.

192. The inner guard shall attend the door on the inside, report to the vice-president the names of all persons seeking admission and carry out his instructions.

193. The outer guard shall attend the outer door, receive the name and password from all persons seeking admission, and prevent the intrusion of all improper or disorderly characters, and for his services may receive such remuneration from the general funds of the lodge as may be determined by the lodge.

194. (1) The physician or physicians shall examine every candidate for financial membership; sign his certificate as to health and forward same to the lodge secretary, having power to reject any candidate.

eligible for his services, and provide them

(2) Shall attend all sick members with proper medicine—medicine being understood as applying to drugs only, and not to include spirits, wines, trusses or other surgical appliances; provided that each lodge shall make its own arrangements with the lodge physician as to operations and attendance in connection therewith and consultations.

(3) Shall immediately notify the secretary of any member whom he is called upon to attend; notify the secretary within forty-eight hours of all members placed on the lodge funds, and also as soon as each such member has fully recovered; attend all members within the limits of any city wherein the lodge is located, and where the lodge is located elsewhere than in a

city, shall attend all members within a distance of three miles from the lodge room at his regular allowance; but shall be allowed extra mileage thereafter as agreed upon by the lodge, to the distance of five miles, which extra mileage shall be paid by the member visited, but any member beyond the latter distance shall have no claim on his attendance except as above provided.

(4) Shall send in his book to the secretary every three months to be revised; and for his services shall receive such annual sum as the lodge may decide, payable quarterly for every financial member of the Sick and Funeral Benefit Department who does not owe more than three months' dues and resides within the prescribed limits, which sum shall be payment in full for his services; and provided that should he at any time be absent without providing a duly qualified physician to perform his duties to the lodge, such sum as shall be paid for the services of another physician shall be deducted from his stipend.

(5) Provided that in case or cases of necessity physicians not members of the Society may be elected lodge physicians.

195. Lodge trustees (two or more in number) shall be elected by each lodge. They shall draw out all moneys from the bank, when ordered to do so by the lodge, and on receipt of an order, signed by the

president and secretary, and stamped with the lodge seal, hand such moneys to the treasurer, and take his receipt for the same, and attend the auditors when required. Each trustee shall give a bond to his lodge, in a sum to be agreed upon by such lodge, for the faithful performance of his duty.

196. Three auditors, two of whom shall constitute a quorum, shall be elected by each lodge, and shall carefully audit the lodge books within 15 days after the closing thereof, comparing the entries made in the ledger, check the ledger with the cash book, and sign the same, if correct; shall be furnished by the officers with all books, documents and papers pertaining to the lodge; shall report to the lodge at the first meeting after such audit; and shall certify to the number of members entitled to the services of the lodge physician, and to the correctness of the returns to the Supreme or Grand Secretary.

LODGE FUNDS.

197. (1) The funds and property of each subordinate lodge are, by the provisions of its charter and the constitution of this Society, held only in trust, for the purposes laid down therein, and must be applied solely for such purposes. Each lodge shall, however, have power to control its own funds in accordance with said constitution. Each lodge shall have a gen-

eral benefit fund, composed of proposition and initiation fees, contributions, donations and interest on investments, which shall be applied for sick and superannuation benefits, funeral levies, and general management expenses only. All claims thereon shall be made in writing to the lodge secretary. Each lodge may provide a special fund or funds which may be raised by a levy upon the members in addition to the regular monthly dues, the amount of such levy to be determined at a regular meeting of the lodge; provided notice of motion has been duly given at a previous meeting, and that at least seven days' notice in writing has been mailed by the secretary to the members, and provided further that such motion be carried by a two-thirds vote of the members present and voting at such meeting, and such fund or funds may be used as the lodge shall from time to time decide. The receipts and disbursements on account thereof shall be kept distinct from the general fund.

(2) All funds of a subordinate lodge in excess of \$1,000.00 may by resolution adopted and carried by a two-thirds majority of the members present and voting at a specially summoned meeting of said lodge be invested for its benefit by the trustees in the name of the lodge on first mortgage on real estate or in such other stock, debentures or other securities

as may be approved by the Supreme or Grand Executive Council.

INITIATION FEES.

198. (1) The initiation fee in this Society shall be paid before the candidate is initiated, less fifty cents paid on application. All accepted candidates for financial membership in the Sick and Funeral Benefit Department shall pay a minimum initiation fee of three dollars, which shall include his contribution for the month in which he is initiated.

(2) All accepted candidates for financial membership in the Beneficiary Department only shall pay an additional fee of one dollar.

(3) All accepted candidates by transfer from the Juvenile Department to an adult lodge shall pay an initiation fee of fifty cents.

(4) Every accepted candidate for honorary membership shall pay an initiation fee of \$5.00, which shall include his first year's annual fee of \$2.00. Provided that any such candidate paying \$15.00 at his initiation shall become an honorary life member of the lodge into which he was so initiated.

CONTRIBUTION FEES.

199. (1) The contribution fees of financial members joining the Sick and Funeral Benefit Department after the 31st day of December, 1904, including capitation tax and funeral levies, shall be payable monthly in advance on the first day of each and every month, according to the following scale:

Age in years at last birthday.	Amount in cents pay- able per month.	Age in years at last birthday.	Amount in cents pay- able per month.
17	50
18	50	34	66
19	51	35	67
20	52	36	68
21	53	37	69
22	54	38	70
23	55	39	71
24	56	40	72
25	57	41	74
26	58	42	76
27	59	43	78
28	60	44	80
29	61	45	82
30	62	46	84
31	63	47	86
32	64	48	88
33	65	49	90

The above rates apply only to members joining the Sick and Funeral Benefit Department after the 31st day of December, 1904; those in the Department at the latter date continuing to pay as then rated. And such rates shall apply to the age of every candidate or member entering or joining the Sick and Funeral Benefit Department.

(2) The contribution fee of financial members in the Beneficiary Department only, including capitation tax, shall be 25 cents per month.

(3) The contribution fee of honorary members shall be \$2.00 per annum in advance, subject, however, to section 177 (sub-sec. 3).

(4) Provided the funds of any lodge become so depleted as to represent 25 cents or less per capita of the membership in good standing, the lodge shall upon proper report of the auditors make a special levy upon the lodge membership.

(5) Provided that any Grand Lodge may, by by-law duly enacted and approved by the Supreme Lodge or Executive, increase the said contribution in this section mentioned, payable by members of Subordinate Lodges under the jurisdiction of such Grand Lodge.

CAPITATION TAX.

200. Every subordinate lodge under the immediate jurisdiction of Supreme Lodge shall pay with each regular return a capitation tax to the Supreme Lodge at the rate of eighty cents per member per annum for all financial members who do not owe more than three months' dues, and for all honorary members who pay an annual fee of \$5.00. Provided that such capitation tax in the case of lodges under the jurisdiction of a Grand Lodge may be increased to such amount as such Grand Lodge may determine, with the approval of Supreme Lodge or Executive.

FUNERAL LEVY.

201. Each subordinate lodge under the immediate jurisdiction of Supreme Lodge shall pay with each regular return a funeral levy to the Supreme Lodge at the rate \$1.00 per member per annum for all members not more than three months in arrears. Provided that such funeral levy may be increased to such amount as such Grand Lodge may determine, with the approval of Supreme Lodge or Executive.

REGISTRATION FEE.

202. Each subordinate lodge shall also pay with each regular return a registra-

tion fee of fifty cents for each new member returned to the Supreme or Grand Lodge (Juvenile Transfer members and Charter members excepted), and said fee shall be applied to the Funeral Fund.

SUBORDINATE LODGE SICK BENEFIT DEPARTMENT.

203. (1) All sick benefits shall be paid by subordinate lodges; but nothing herein contained shall prevent the payment of increased sick benefits to members of Subordinate Lodges, under the jurisdiction of a Grand Lodge, when such Grand Lodge, by by-law, so enacts, with the consent of the Supreme Lodge or Executive. At the expiration of twelve months from the date of his initiation every financial member in the Sick Benefit Department in good standing, shall be paid at the rate of \$3.00 per week, sick allowance from the date named in the lodge physician's certificate, subject to the proviso hereunder, for the space of thirteen weeks; and at the rate of \$1.50 per week for the following twenty-six weeks, after which no further claim can be made on account of the same illness. At the expiration of six months from the date of his initiation, every member in good standing shall be paid at the rate of \$1.50 per week sick allowance for the space of thirty-nine weeks. All dues shall be de-

ducted from sick benefits. A week shall consist of seven days.

(2) Provided that any subordinate lodge may by resolution or by by-law adopted by a two-thirds vote of the members present and voting at a meeting specially summoned for the purpose, provide that \$5.00 per week sick allowance shall be paid in lieu of \$3.00, and \$2.50 per week in lieu of \$1.50, in which case all members in such lodge shall provide their own physician and medicine. Should a member of a lodge which has adopted such resolution or by-law fall sick before the expiration of six months he shall receive in lieu of physician and medicine such proportionate sum as may be provided by the by-laws of the subordinate lodge to which the member belongs.

(3) Provided also that any subordinate lodge may by resolution or by by-law adopted by a two-thirds vote of the members present and voting at a meeting specially summoned for the purpose, provide that no member shall receive any sick allowance for the first week of his sickness.

(4) Provided further that the foregoing conditions shall govern all subordinate lodges; but nothing herein contained shall prevent the payment of increased sick benefits to members of subordinate lodges under the jurisdiction of a Grand Lodge, when such Grand Lodge, by by-law, so

shall enact, with the consent of the Supreme Lodge or Executive Council, except where a dispensation is granted for special districts by the unanimous consent of the Supreme Executive Council for the payment of increased sick allowance and increased contributions.

(5) Provided, also, that any subordinate lodge may by by-law carried by a two-thirds vote of the members present and voting at a meeting specially summoned for the purpose, adopt a higher schedule of monthly dues for the purpose of paying increased sick benefits.

204. Any member who has received either full or half sick allowance, and is declared fully recovered by the lodge physician's certificate, shall from the date thereof cease to be upon the lodge funds, and should he again fall sick within 12 months thereafter, shall be placed in the same position as when he ceased to receive such sick allowance, and shall be paid the same allowance which he was then receiving until the full amount allowed by the constitution is paid, namely, 13 weeks at \$3 per week, and 26 weeks at \$1.50 per week, or the increased sick allowance mentioned in section 203, as the case may be. Any member who has received either full or half sick allowance and has fully recovered as above mentioned and ceased to be upon the lodge funds and who again

falls sick after the expiration of twelve months thereafter, shall be entitled to receive the full sick allowance as if no previous sickness had occurred. A member who has received benefit for the full time shall not recommence until he shall have been able to resume and has continued his own or other occupation for twelve months.

BENEFITS OF MEMBERS DISTANT FROM LODGE—HOW OBTAINED.

205 A member residing at a distance from his subordinate lodge, in case of sickness, shall produce a medical certificate, stating the nature of his illness, from the physician of the lodge nearest to him, which shall be countersigned by the president of such lodge, and forwarded to the secretary of the sick member's lodge for action. A member residing at a distance from his subordinate lodge, and desiring to be placed on the physician's list of another lodge shall, after passing a satisfactory examination and paying the usual lodge physician fees, be entitled to medical attendance and medicine; provided that the said member shall immediately, upon such examination, register with the said lodge secretary, who shall thereupon place said member on the physician's list. If the member does not have himself placed on the physician's list as herein

provided he shall be personally responsible for physician's services and medicine.

206. Every member out of the jurisdiction of the physician of his own lodge and not near a lodge of the Society, falling sick, shall immediately notify his lodge secretary, and forward the certificate of a duly qualified medical practitioner (for whose services and all medicines he shall be personally responsible), together with a declaration made before a commissioner or a justice of the peace stating the nature of his illness. The certificate shall be countersigned by the lodge physician, whereupon he shall be entitled to sick benefits.

207. A member who resides over ten miles from a physician may, when claiming sick benefits, present in lieu of physician's certificate a declaration made by two persons, before a commissioner or a justice of peace, certifying that the person so applying has, of their certain knowledge, been incapacitated and unable to work for a given period, and the matter shall be then decided by a vote of the lodge.

SICK MEMBERS MUST REPORT.

208. Every member falling sick shall, within forty-eight hours of commencement of such sickness, notify or cause to be

notified, the secretary of his lodge, or forfeit benefits for the time prior to such notification. He shall also notify his subordinate lodge secretary when declared recovered by the lodge physician. Every member shall produce to his lodge secretary within one week after the commencement of his sickness the lodge physician's certificate. Every member, whether residing inside or outside the limit of the lodge physician's jurisdiction, or who is attended by other than his lodge physician, shall also produce at least once every week during such sickness, to the lodge secretary, the physician's certificate, stating that he is still unable to follow his own or other employment, or, failing to do so, shall forfeit said week's sick benefit. No member shall be entitled to any sick allowance for less than one week, excepting after the first week. In the case where a member is attended by other than his lodge physician, and the lodge so decides, he shall, before receiving sick allowance, permit of a consultation of his own physician and the lodge physician for the verification of his illness by the latter. A member who has been placed on the sick fund, and is being treated by any physician other than the lodge physician, shall, if physically able, or when he shall have become physically able, attend the lodge physician, for examination once each week during such sickness, and at its ter-

mination, or forfeit all claim to sick benefits. Provided that any member who engages any other than a duly registered medical practitioner to attend him in his sickness shall forfeit all claims to sick benefits on account of such sickness; provided, further, the lodge shall have the right to demand the lodge physician's certificate of sickness in the case of members belonging to any other benefit society.

209 (1) No member who is indebted to the Society or his lodge for more than three months' dues shall be entitled to receive from the said Society or any lodge thereof, medical attendance, medicine, sick benefits, funeral benefits, or any financial or pecuniary benefit whatever; nor shall any member or the widow, children, next of kin, appointees or personal representatives of any member, while such indebtedness exists, have any claim whatever upon the funds of the Society or any lodge thereof, for any such benefit, or for any benefits of any kind whatever payable to such widow, children, next of kin, appointees or personal representatives; and no member who becomes sick or disabled within the meaning of the constitution while so indebted, shall become entitled to receive any such benefit by reason of the payment and acceptance, during the continuance of such sickness or disability, of the said indebtedness or dues in arrear, nor shall the payment and acceptance of such indebted-

ness or dues in arrear, during the continuance of such sickness or disability, entitle such member, or the widow, children, next of kin, appointees or personal representatives of such member, to make any claim whatever upon the funds of the said Society or any lodge thereof for any such benefit, or for any benefit of any kind payable to such widow, children, next of kin, appointees or personal representatives; and no member or any nominee of such member who is indebted to the Society or his lodge for more than three months' dues shall become entitled to receive any sick or funeral benefits on account of any sickness or death that may take place during the four weeks next following the date of payment of such indebtedness.

(2) No member shall be entitled to sick benefit or medical attendance whose illness arises from improper conduct.

(3) No member of this Society shall receive any benefit or sick allowance whatever for an accident caused while engaging in any professional horse or bicycle race, professional acrobatics, prize-fighting, rope or wire walking, or as an aeronaut.

(4) No member shall receive sick benefits after he has recovered sufficiently to follow his own or other occupation.

(5) No member receiving sick pay shall be allowed to do any kind of work, fre-

quent any room wherein intoxicating liquors are sold, be out of doors after 9 p.m. during the months of May, June, July, August and September, or after 6 p.m. during the months of October, November, December, January, February, March and April, unless permitted by his lodge physician, and any member doing so shall forfeit his sick allowance for such week.

SUPERANNUATED AND DISABLED MEMBERS.

210. Any member remaining sick, after receiving the full amount of sick pay allowed by the constitution, shall not be entitled to claim any further sick benefits, but may be superannuated, and thereafter may receive during the pleasure of the lodge \$1.00 per week as long as he remains sick, and may be exempt from all dues while receiving such benefits. If a superannuated member should recover and produce a physician's certificate of good health he shall, after twelve months from date of said certificate be entitled to full benefits. If he fall sick within the said twelve months he may again be placed on the superannuated list. Any financial member over the age of sixty-five years, who shall become permanently incapacitated and who shall have paid dues into his present lodge for twenty years, may be relieved from all further contributions for the re-

mainder of his life; but the subordinate lodge shall be responsible to Supreme or Grand Lodge for the usual quarterly levies.

MEDICAL ATTENDANCE FOR MEMBERS.

211. Every financial member in the Sick and Funeral Benefit Department shall be entitled to medical attendance and medicine immediately on joining the Society, except as may be provided in sections 194 and 203.

CLEARANCE.

212. Should any member desire to draw his clearance from one lodge for the purpose of joining another he shall notify the secretary, in writing, to that effect, who shall bring the application before the lodge, and the same shall, if no charge be pending against him and he is clear on the books, be forthwith granted, free of expense, and be signed by the president and secretary and stamped with the lodge seal. A clearance certificate may be renewed if lost or destroyed accidentally, and satisfactory evidence adduced by the applicant to the lodge having granted the same, and upon such terms as the lodge may determine.

213. (1) Any member holding a clearance certificate from a subordinate, a grand

ordinate
eme or
levies.

MEM.

he Sick
hall be
medi-
Society,
ms 194

o draw
e pur-
ify the
t, who
e the
rge be
on the
of ex-
nt and
e seal.
wed if
satis
ollicant
e, and
deter-

clear-
grand

in a Supreme Lodge, desirous of deposit-
ing the same in another lodge, shall make
application as in the case of an uninitiated
person, and accompany the same with said
certificate within two months from date of
issue, together with a certificate of good
health from the physician of the lodge he
wishes to join, and pay the sum of fifty
cents as a deposit fee. Such application
shall be referred to a committee whose
duty it shall be to report as to the stand-
ing and qualifications of the applicant at
a regular meeting, after which he shall be
balloted for by secret ball ballot, as in the
case of an initiate, and, if accepted, shall
pay all dues and contributions which may
have accrued since the date of his clearance
certificate, and continue to pay as of the
age at which he was rated in his former
lodge.

(2) A member whose clearance has been
refused by any lodge shall be allowed the
space of one month from the time of such
refusal to return the same to his own
lodge, which lodge shall be bound to re-
ceive it, and shall charge the member
with all contributions and fees that may
be due from the date of such clearance,
together with the sum of fifty cents on
the return of the said clearance.

214. The lodge from which a member
has taken his clearance shall, subject to
clearance conditions, be responsible to
such member for all sick benefits due to

him until he joins another lodge or returns his clearance. Should a member after depositing his clearance in another lodge, require and be eligible according to this Constitution to receive benefits, the lodge he has joined shall pay the same. His former lodge shall be responsible for and pay to his new lodge, half such benefits until the expiration of six months from the date of his clearance. The secretary of his new lodge shall immediately notify the secretary of his former lodge by registered letter when the member has declared on the sick fund, otherwise his new lodge shall be responsible for all sick benefits.

215. Any clearance may be revoked by a lodge granting the same, or ordered vacated by the proper Supreme or Grand Lodge or Supreme or Grand President at any time, whether before or after the said clearance has been deposited in another lodge, for cause appearing. When so revoked or vacated for the purpose of impeachment or trial, the person holding the said certificate shall become again subject to the lodge which issued it in so far as concerns said impeachment or trial. Refusal to comply with proper citations in this connection shall constitute contempt at any time.

RESIGNATION OF MEMBERSHIP.

216. Any member desiring to resign his membership in this Society shall notify the secretary of his subordinate lodge in writing to that effect, and after paying all dues, shall receive free of charge within twenty-one days a certificate of resignation, signed by the president and secretary, and stamped with the lodge seal to the effect that he was in good standing in said lodge at the date of its issue.

RE-ADMISSION INTO THE SOCIETY.

217. Any rejected applicant or person who has previously belonged to the Society, may apply for admission into any lodge. Any member resigning, and afterwards being desirous of rejoining the Society, must pay the sum of fifty cents with the deposit of his certificate of resignation, be re-proposed, undergo medical examination, be balloted for, but need not be re-initiated. He shall be exempt from paying the initiation fee, provided he has paid not less than one year's contribution fees into the lodge from which he drew his resignation. His contribution fees shall be according to the age at which he rejoins, and he shall be entitled to receive sick and funeral benefits, should he enter such department, at the expiration of six or twelve months respectively, as in the case of a new member. A member expelled

for non-payment of dues may become eligible for re-admission into any lodge. Such lodge shall communicate with the lodge of which he was an applicant or member; and procure such information as the lodge may be able to give. He shall be re-proposed and pay the proposition fee, produce the lodge physician's certificate of good health, be balloted for, pay the initiation fee, but need not be re-initiated, and shall be entitled to sick and funeral benefits, if entering such department, as and after the periods above mentioned. Any member expelled from the Society for any cause other than the non-payment of dues shall be eligible for re-election in the same manner as one expelled for non-payment of dues, provided the written consent of the Supreme Executive Council thereto be first obtained.

EXPULSION.

218. (1) No member shall be expelled from any lodge except through the action of the arbitration committee, or as otherwise provided.

(2) A financial member's name shall not be erased from the lodge books by reason of his being indebted to the lodge for three months' dues, but the lodge secretary shall send to such member a registered letter stating his indebtedness to the lodge, and notifying him of his suspension from bene-

nts. Every member nine months in arrears shall be further notified by registered letter that should he become twelve months in arrears, his name shall be struck off the membership roll and he shall stand expelled, and the fact of his expulsion shall be recorded on the minute book of the lodge. Any notice or communication sent by post directed to a member at his address as registered in the lodge roll book, shall be deemed to have been delivered to such member and shall be a good and sufficient notice to such member of the contents of the document or documents so sent.

(3) Every honorary member shall be subject to suspension and expulsion as in the case of a financial member.

DEFUNCT LODGES.

219. (1) Any subordinate lodge failing to meet for six consecutive months, misappropriating funds held in trust, knowingly admitting any rejected or expelled member, or for any cause failing to carry on its business, may be declared defunct and extinct by the Supreme or Grand Executive Council, and upon such extinction, or upon its expulsion, or the surrender or forfeiture of its charter, it shall be the duty of its officers last installed and members having the custody of the charter, books, papers, funds and other properties of the lodge,

to forthwith assign, transfer and deliver the same on demand to the Supreme or Grand Secretary for and on behalf of the Supreme or Grand Lodge, to be held in trust for the benefit of the members of such subordinate lodge for a period of six months, or should an appeal have been duly entered, then for such further period as may be necessary for the determination thereof, and pending said period the Supreme or Grand Lodge shall keep such funds and effects separate from its own and shall not estimate the same as part of its assets; but after the expiration of said period and the non-restoration of said lodge as hereinafter provided, the Supreme or Grand Executive Council shall, after deducting any claims that the Supreme or Grand Lodge may be justly entitled to, order an equal distribution of said funds amongst the members who were in good standing at the time of such extinction, expulsion, forfeiture or surrender, and pay over the same to such, upon application being received by the Supreme or Grand Secretary therefor within the further period of one month; and thereafter all said properties, effects and remaining funds shall become an asset of the Supreme or Grand Lodge for the benefit of members who may be carried by it and under its protection.

(2) Provided that any subordinate lodge officer or member having such funds, properties or effects in his custody and re-

fusing to deliver up same as aforesaid, shall be forever excluded from membership in this Society, notwithstanding such lodge be afterwards reorganized.

(3) Twelve or more members of a defunct lodge may apply to the Supreme or Grand Executive Council for the restoration of the said lodge. The Supreme or Grand Executive Council, upon approval of each applicant, may restore them to membership in said lodge, together with the charter, funds and effects belonging to said lodge at the time of its extinction, unless such effects shall have been disposed of as hereinbefore provided.

(4) Any member of a defunct lodge clear on the books at the time of extinction, and who has paid to the Supreme or Grand Secretary all arrears due by him, may upon application to the Supreme or Grand Secretary, receive a clearance certificate under the seal of the Supreme or Grand Lodge, which shall have all the force of a clearance certificate regularly granted by a subordinate lodge. The Supreme or Grand Executive Council shall satisfy themselves before granting such certificate that the applicant was not improperly implicated in the breaking up of the lodge, or in the illegal distribution or use of its funds.

(5) The Supreme or Grand Lodge shall take the members of defunct lodges under its protection, paying the same benefits, ex-

cepting free medical attendance and medicine. Should any member not have deposited his clearance certificate within the prescribed time, the Supreme or Grand Lodge shall be relieved from any further liability.

ASSISTANCE IN CASE OF HARDSHIP.

220. Whenever it shall become known that any member of this Society has been reduced to a state of pecuniary hardship by any sudden and unlooked for calamity, his case shall be referred to the president of his lodge, whose duty it shall be to examine into the same and report to the lodge for its action.

THE PASSWORD.

221. Every member not owing more than three months' dues to his lodge, and none other, shall be entitled to receive the password from the president. A member who resides more than five miles from his own lodge, on production of proof that he is in good standing, and a requisition from his own lodge bearing the lodge seal, may receive it from the presiding officer of any lodge.

ADMISSION OF VISITING MEMBERS.

222. Any member visiting any lodge other than his own, may be admitted up-

on giving his name, the name of his lodge, and the current password. He shall not vote, but may address the lodge by permission of the president. No member shall be admitted without the password, unless vouched for by two members that he is in good standing, or produces his voucher or receipt. No president shall give the password to any but members of his own lodge, unless authorized to do so, under an order, bearing the lodge seal and signed by the secretary and president of the member's lodge desiring the same.

REGALIA.

223. Every officer shall wear the regalia or jewel pertaining to his office in the lodge room while on duty. Past officers shall be entitled to wear regalia or jewel according to their past rank.

LODGE SEAL.

224. Each lodge shall have a seal in accordance with the directions of the Supreme or Grand Executive Council, with appropriate devices, which shall be affixed to all certificates and official documents emanating from the lodge.

BY-LAWS.

225. Each lodge shall have power to make by-laws for its own government, pro

vided such by-laws are in accordance with the general laws of the Society and have been sanctioned by the Supreme or Grand Executive Council. Provided further that such by-laws shall not be altered or amended unless by a two-thirds' vote of the members present at a meeting specially summoned for that purpose and of which fourteen days' notice in writing shall have been given to each member in good standing at his last known address.

OBEDIENCE.

226. All subordinate lodges shall adhere strictly to the constitution and rules of order, and to the by-laws framed by the lodge sanctioned by the Supreme or Grand Executive Council, shall in all cases yield implicit obedience to the regulations that may from time to time be promulgated by the Supreme or Grand Lodge; and shall not disseminate any written or printed matter detrimental to the Society, nor shall any members thereof do so, and no appeal for aid shall be made, except in a member's own lodge, without the sanction of the Supreme Executive Council or Grand Executive, as the case may be.

VIOLATION OF CONSTITUTION.

227. A lodge which may become cognizant of any violation of the principles or

constitution of the Society by any member of such lodge may institute preliminary inquiries through a committee of three, which shall report to the lodge, and upon sufficient cause shall present charges in due form against such offending member, and act during a subsequent trial as plaintiff on behalf of the lodge.

228. Any subordinate lodge violating any part of this constitution or the orders of the Supreme or Grand Lodge, failing to make regular returns, or pay the dues required by this constitution, shall become liable to the forfeiture of its charter, and the same may thereupon be recalled by the Supreme or Grand Executive Council, or by vote of the Supreme or Grand Lodge in session.

ILLEGAL USE OF SOCIETY'S NAME.

229. It shall not be legal for any member while in active membership with this Society to institute, or cause to be instituted, or become a member of any male society, branch or department thereof, whereby the name or any similarity to the name of the Sons of England Benefit Society is used or can be so construed.

ARBITRATION COMMITTEE.

230. Every lodge shall appoint an arbitration committee composed of twelve

members, seven of whom shall form a quorum. All charges that cannot be amicably settled shall be referred thereto. No member of such committee not having the White Rose Degree shall take any part in the investigation of any charge preferred in a White Rose Degree meeting.

COMPLAINT AND INVESTIGATION.

231. Any member of this Society having any just cause or complaint against another member, and desiring an investigation by the lodge of the member charged, shall, in writing, lay the same before the president of such lodge. It shall be such president's duty to use all reasonable means to secure a settlement of the difficulty; and should he deem it necessary, or the member demand it, he shall bring the matter before the arbitration committee, who shall investigate the complaint or charge and report its decision in writing to said president.

ARBITRATION COMMITTEE—HOW SUMMONED.

232. In case of a charge being brought by a member of one lodge against a member of another lodge, the secretary of defendant's lodge shall notify the arbitration committee of his lodge and all parties concerned, at least one week before the

meeting thereof, of the time and place of such meeting. The plaintiff and defendant shall each have the right to challenge any two members of the said committee. Such members so challenged shall not then act thereon. No member who is concerned or interested in the charge, or who is a witness in the case, shall be allowed to act as a member of said committee.

PRESIDING OFFICER.

233. The president of the defendant's lodge shall preside at the investigation of all charges preferred in such lodge, act as judge, and award the punishment, according to the Society's constitution and lodge by-laws. If the president cannot attend he shall notify the vice-president to act in his stead: if neither be present, the arbitration committee shall elect one of its members to act as chairman.

DEPOSIT REQUIRED.

234. Any member requiring the services of the arbitration committee must deposit the sum of one dollar at the time of making the charge with the president, which sum shall be returned if the charge be substantiated.

MEMBERS REFUSING ATTENDANCE.

235. Should any member of the Society without sufficient reason refuse to attend, after being properly notified, his president shall order his attendance under the seal of the lodge, and in default, the member shall be fined by his lodge in a sum not less than \$2.00 nor more than \$5.00.

MODE OF PROCEDURE.

236. The president shall see that all charges brought before the arbitration committee are conducted in the following manner: He shall appoint some member to attend the door, who shall admit members in the usual way. Strangers who may be required as witnesses shall be vouched for. The plaintiff and defendant shall have the right, if they elect, to each appoint a member to conduct his case. The president shall have power to exclude all witnesses and others from the room. He shall ask, "Are any members of the arbitration committee challenged?" If so, such challenged members, not exceeding two on each side, shall retire, and their respective places be filled by other eligible members, if present, otherwise the hearing shall be adjourned until a legal quorum be present. He shall afterwards read the charge, and the defendant shall plead "guilty" or "not guilty." In the

event of the defendant pleading not guilty, the plaintiff and his witnesses shall first be examined, afterward the defendant and his witnesses. The president and arbitration committee shall have power to call for the production of all documents, and examine other witnesses if necessary. The plaintiff and defendant shall have the right to cross-examine said witnesses. The evidence shall be taken down in writing, read over to and signed by the respective parties giving the same. No hearsay evidence shall be admitted, but criminal conduct of any kind shall be considered as sufficiently proved for action by the arbitration committee, even without summoning, and in the absence of the defendant, if the same be impracticable, after trial and conviction by a court of competent jurisdiction. The plaintiff, or the member acting on his behalf, first, and the defendant or the member acting on his behalf, next, shall be at liberty to address the arbitration committee, confining themselves to the case in hand. The president shall then address the arbitration committee, which shall afterwards retire to consider its verdict, in which it shall be necessary that at least two-thirds of said committee shall concur.

VERDICT.

237. The President on receiving the verdict shall pronounce judgment.

NON-APPEARANCE OF ACCUSED.

238. None but parties concerned shall be permitted to interfere. If the accused neglects or refuses to appear for trial after having been duly notified, without presenting a sufficient and acceptable excuse for such neglect or failure to appear, he shall be deemed guilty of contempt, and shall be dealt with as the arbitration committee may direct.

CASE OF LODGE PRESIDENT CHARGED.

239. Should any lodge president be charged under the Constitution, his case shall be referred to the Supreme or Grand Executive Council, who shall have power to appoint a committee of three (if possible, his peers), who shall constitute an arbitration committee, and investigate such charge and report the result in writing to said Grand or Supreme Executive Council, whose decision shall be binding, unless reversed upon appeal to Supreme Lodge as provided by the constitution. The procedure and regulations hereinbefore laid down for other trials shall be observed herein.

SERVICES OF LODGES SOLICITED.

240. Any lodge that has not a sufficient arbitration committee, or whose arbitration committee fails from any cause to set-

the any case in dispute, and where the desire is expressed by vote of such lodge, it shall have power to solicit the services of members of other lodges to act in the capacity of arbitrators, whose decision shall have the same authority in the settlement of disputes as the constitutional arbitration committee of the former lodge. Said committee shall elect its own chairman, whose decisions shall be binding as in the case of a subordinate lodge president.

APPEALS.

241. Any member feeling aggrieved at the result of any trial may appeal to the Supreme or Grand Executive Council, producing all papers and evidence that may have been presented or that the arbitration committee may have rejected. Such appeal must be made in writing, and notice given of intention to appeal, within thirty days after the decision complained of, and addressed to the Supreme or Grand Secretary. Every member shall submit to the decision pending such appeal. Any member may appeal from the decision of the Supreme or Grand Executive Council to the Supreme or Grand Lodge when in session, as the case may be, providing ten days' notice has been previously given in writing to the Supreme or Grand Secretary, and the foregoing provisions relating to appeals have been compiled with.

ADVISORY BOARD FOR JUVENILE LODGES.

242. Each subordinate lodge under whose supervision a juvenile lodge is placed, shall, at the earliest opportunity, elect by ballot, or by show of hands, as may be decided, an advisory board for such juvenile lodge; said board to consist of not less than five, nor more than ten members, to act on its behalf, and become advisory members of the said juvenile lodge; to fill the following positions, and fulfil the duties thereof, viz.: chief adviser, vice-chief adviser, secretary-treasurer, two auditors, and two trustees, as they may elect among themselves. The special duty of each advisory officer shall be as defined in the Constitution of the juvenile department. It shall be the duty of such advisory board to see that the laws of the juvenile department, as well as the general laws of the Society, are observed and obeyed, and proper returns made to the Supreme or grand secretary, as the case may be, on the proper forms supplied for that purpose, and as faithful advisers, use their best influence to promote the interest of the juvenile lodge and its members. Should any member of the advisory board be derelict in his duty, his subordinate lodge shall adjudicate upon the case, and order his removal, and substitution, if necessary, and its decision shall be binding

upon the member, subject, however, to the right of appeal to the grand lodge or Supreme Lodge, as the case may be. The election of the members of such board shall be held annually, on election night in December, except when it becomes necessary at the institution of a juvenile lodge.



WHITE ROSE DEGREE.

243. Whenever it may appear to the members of any subordinate lodge that it would be desirable and advantageous to establish a White Rose Degree in connection therewith, the Supreme Executive Council shall, on receiving a written application to that effect under the seal of such lodge, issue a dispensation authorizing the same.

244. Every applicant for the White Rose Degree must be in good standing in his subordinate lodge.

245. The advancement fee for the White Rose Degree shall not be less than \$2.00, which must be paid by each candidate before his advancement.

246. All expenses in connection with the White Rose Degree shall be paid from the funds of such Degree, which shall be kept separate and distinct from the other funds of the lodge.

247. The White Rose Degree shall be conducted and governed by the officers of the lodge having such Degree, together with such other officers as may be appointed by the members of the White Rose Degree for the proper conduct of the work thereof.

248. No member shall be eligible for the White Rose Degree unless he has been three months in the Society, and produces a certificate properly signed by his subor-

dinate lodge president and secretary, and bearing the lodge seal, stating that he has paid all his lodge dues in full up to date, and is recommended as a fit and proper person to receive the Degree. Provided any member belonging to a subordinate lodge not three months in existence shall be allowed to receive the White Rose Degree in less than the above stipulated time under the following circumstances: For the purpose of holding office in a subordinate lodge, or for any other justifiable cause, provided a dispensation from the Supreme Executive Council be obtained. All lodges having a White Rose dispensation shall have power to confer such Degree upon any candidate upon whom a favorable ballot has been taken in a White Rose Degree meeting of his lodge, provided such candidate produce a certificate to this effect duly signed by the president and secretary of his subordinate lodge, with the seal thereof attached, together with a dispensation from the Supreme or Grand Executive Council, Supreme or Grand President or his District Deputy.

249. Every subordinate lodge having a White Rose dispensation shall hold a White Rose Degree meeting at least once every three months.

250. Every subordinate lodge secretary shall report all White Rose Degree meetings of his lodge to the Supreme or Grand Secretary in his regular reports.

251. No candidate shall be admitted into membership in this Degree except by ballot. Three black balls shall disqualify. Any candidate rejected may renew his application for admission after three months from the date of his rejection.

252. The White Rose Degree funds of every subordinate lodge shall be under the control of the White Rose Degree members, who may make by-laws for the government thereof, provide for extra benefits and for the proper conduct of the White Rose Degree meetings of such lodge, subject to the approval of the Supreme or Grand Executive Council.

253. White Rose Degree property shall, under no pretence, be taken from the lodge room, unless in charge of the proper officers.

254. The suspension or expulsion of any member of a subordinate lodge shall deprive such member of all privileges and benefits in connection with the White Rose Degree thereof, and his reinstatement in or rejoining a subordinate lodge shall restore him to the privileges of the White Rose Degree without payment of any further fee.

255. On and after the 15th day of May, 1895, dispensations shall not be issued for the purpose of an amalgamated White Rose Degree Lodge.

PENALTIES.

MEMBERS VIOLATING RULES, ETC.

256. Every member violating any of the obligations, established principles, laws, rules or regulations, of the Society, disclosing the secret transactions of the lodge, divulging the name of a member who has reported unfavorably on an application, or has opposed any person becoming a member, feigning himself sick or disabled, practising, aiding or abetting any other misrepresentation, false pretence or fraud, guilty of habitual drunkenness, embezzling lodge funds, wilfully damaging or destroying lodge property, defrauding a member, domestic unkindness, immoral or criminal conduct of any kind, entering the lodge in a state of intoxication, using profane or other improper language, wilfully persisting in disturbing the harmonious and peaceful working of the lodge, or refusing to obey the presiding officer after being twice called to order, maligning the members, the Society, or objects thereof, in or out of the lodge room, shall be fined, suspended or expelled from his lodge and the Society, as may be determined in accordance with the Constitution of the Society, its laws, rules and regulations.

CONDUCT IN LODGE ROOM.

257. Every member refusing to abide by the decision of the president or using improper language or offensive personalities shall be fined 25 cents in each case; appearing at any meeting intoxicated, shall be fined one dollar, and for the third offence shall be expelled from the Society. Officers guilty of these offences shall be fined double the foregoing amounts. Any lodge not producing its books and proper ties to the installing officer on the night of installation in January of each year shall be fined five dollars.

FALSE STATEMENT.

258. Any member of this Society knowingly making false statements for the purpose of any candidate or for the purpose of procuring sick benefits shall be liable to suspension or expulsion, as the arbitration committee may determine.

MEMBERS IN A FOREIGN COUNTRY.

259. Any member who shall take up his residence in any foreign country outside His Majesty's dominions shall, after a space of twelve months, and yearly thereafter, notify his lodge upon the form supplied by the Supreme Executive Council that he continues a British subject, and intends continuing as such, and has not

taken any oath of allegiance to any foreign power, or intends to do so. But upon his taking any such oath he shall cease to be a member of this Society.

LODGES REFUSING CLEARANCE.

260. Any lodge neglecting to forward their reasons for refusing a clearance within one month from the same being applied for by the Supreme or Grand Executive Council shall be fined two dollars; and still neglecting or refusing so to do, shall be liable to forfeiture of its charter.

LODGES FAILING TO MAKE RETURNS.

261. Should any lodge fail to make its regular returns or pay the dues promptly to the Supreme or Grand Lodge, as required by this Constitution, the Supreme or Grand Secretary shall immediately after such default and each succeeding one enter to the debit of such lodge a fine of one dollar per month for the time which shall have elapsed since such return should have been made.

261A. Every member in arrears to his lodge for three months' dues shall be disqualified from voting in his lodge or for nomination for any office therein.

261B. All fines, assessments or levies charged against a member shall, after the next ensuing audit, be considered as arrears of dues.

LOSS OF RITUALS

262. Should any lodge fail to produce its complete set of Rituals to the Installing Officer upon installation night, he shall report the same to the Supreme or Grand Executive Council, who shall have the power to impose a fine not exceeding \$5 for each copy not so produced.



JUVENILE DEPARTMENT.

263. The Juvenile Department of the Sons of England Benefit Society exists by virtue of the authority granted by the Supreme Lodge of the Society.

264. The Supreme Lodge reserves the right to enact general laws for the organization and government of juvenile lodges, for the creation and dissemination of its rituals and ceremonies and matters pertaining to its relationship to the Society as a whole; delegating to grand lodges jurisdiction and powers over juvenile lodges, similar to those granted in the case of subordinate lodges within grand jurisdiction.

265. On the application of twelve or more juveniles, approved of and through an adviser, to the Supreme or Grand Executive Council, upon a proper form, and on receipt of medical certificates, the Supreme or Grand President shall direct the district deputy or some other qualified officer, to institute a juvenile lodge, and hand over to the proper officers the charter and books in the name of the Supreme or Grand Lodge.

OBJECTS.

266. The objects shall be the raising of funds, by entrance fees, contributions of members, fines, donations, and interest on invested capital, for the following purposes, viz.: Rendering assistance to members, supplying medical attendance and medicine in sickness; a sum of money on the death of a member in good standing, and paying the entrance fee into some adult lodge of the society on the member attaining the age of 17 years, and compensation, working expenses of the lodge, dues, fees and assessments to Supreme or Grand Lodge, and for all other objects set out in or contemplated by this Constitution.

MEMBERSHIP.

267. The Department shall consist of an unlimited number of male members above the age of five years and under the age of seventeen years, whose parents are both of the Protestant faith and their ancestors English, according to the constitutional definition of that term, whether members of the Sons of England Benefit Society or not, and organized into juvenile lodges; but each juvenile lodge shall be under the immediate supervision of some one or more subordinate lodge or lodges of the Sons of England Benefit Society, but subordinate to the Supreme Lodge. It shall be op-

tional to admit a child under the age of eight years.

ADVISORY BOARD.

268. The subordinate lodge exercising supervision over a juvenile lodge shall do so through an advisory board of not less than five, nor more than ten of its membership subordinate lodges. If more than three adult lodges have the supervision of a juvenile lodge, two members from each such adult lodge shall form the Advisory Board thereof.

OFFICERS AND HOW ELECTED AND INSTALLED.

269. The officers of a juvenile lodge shall consist of the following, viz.: President, vice-president, chaplain, secretary, treasurer, inner guard, and outer guard. The lodge shall also elect 1st, 2nd and 3rd managing committee members, four auditors and two trustees. The treasurer, secretary, two of the auditors and the two trustees shall be those provided by the advisory board, as elected by the supervising subordinate lodge or lodges, from amongst themselves. All the other officers shall be elected by the members of the juvenile lodge and by ballot at the institution of the lodge, and thereafter at the annual election of officers in January

of each year, and such advisory board to be responsible for the proper bonding of the Secretary and Treasurer.

270. A lodge may elect from among the names approved by the advisory board, a lodge physician, at the annual election of officers, to continue in office during the pleasure of the lodge.

INSTALLATION

271. The installation of the officers shall take place at the first regular meeting in January of each year, and shall be conducted by the district deputy, or in his absence by the chief adviser, or, in his absence, by the vice-chief adviser.

DUTIES OF OFFICERS.

272 (1) The chief adviser shall occupy a seat at the right of the president, and his duties, as the name indicates, shall be of an advisory character. He shall be careful to see that the business of the lodge is constitutionally and harmoniously conducted, and his advice given, courteously avoiding all appearance of arbitrary authority.

(2) The president shall preside at all meetings, preserve order and enforce all rules and see that no imposition is practised, sign all orders, visit the sick, with

the assistance of the vice-president and committee, and perform such duties as the nature of his office may require. He shall avoid all rash decisions, take counsel with the chief adviser, or, in his absence, with the vice-chief, and be ever ready to profit by the advice given.

(3) The vice-chief adviser shall occupy a seat at the right of the vice-president, when the chief adviser is present, and act in accordance with the duties implied by the name. In the absence of the chief adviser he shall assume his station and duties, his own station being filled by some other member of the advisory board, not, however, the treasurer.

(4) The vice-president shall attend all meetings and assist the president in the discharge of his duties and preside in his absence.

(5) The chaplain shall assist the president in opening and closing the lodge, in initiation of candidates, and at the burial of any deceased member.

(6) The secretary shall attend all meetings of the lodge, keep a clear and correct account of all receipts and expenditure, register the name, age and residence of each member, attend the audit and render any explanation the auditors may require respecting the accounts, and perform any duty pertaining to his office not herein provided for. When a member claims sick

pay he shall inform the president and a member of the committee living nearest to the sick member to visit him, who shall report at the next regular meeting, and for his services he shall receive such remuneration as may be agreed upon by the lodge. He shall likewise make a report (upon forms supplied for that purpose) to the Supreme or Grand Secretary of the numerical and financial standing of the lodge every three months, forwarding all propositions and medical certificates of newly elected members and rejected candidates.

(7) The treasurer, who shall be chosen from and elected by the advisory board, shall take charge of all moneys paid into and on behalf of the lodge, and bank all moneys in excess of \$15; pay all accounts but only upon an order signed by the president and secretary; attend the meeting of the auditors, and present all his books, accounts and vouchers for their inspection; give a bond to the president of his subordinate lodge, in such sum as the lodge shall determine, for the faithful discharge of his duties.

(8) The managing committee, while in the lodge, shall assist in all ritualistic work or ceremonials, and discharge such other duties as may be assigned them by the president of the lodge; and during the interim of the meetings it shall be their special duty to visit the sick members of

the lodge, make enquiry into the character and reputation of candidates for membership, and make report thereon to the lodge at its next meeting.

(9) The inner guard shall attend the door on the inside, and report the names of all persons seeking admission, to the vice-president, and carry out his instructions.

(10) The outer guard shall attend the outer door, receive the name and password from all persons seeking admission, prevent the intrusion of all improper or disorderly persons, and under no pretence whatever be on duty without wearing his regalia.

(11) The auditors (two from the advisory board and two elected by the lodge) shall meet every three months and audit the books, accounts and vouchers of the lodge and make written report of said audit to the lodge, a duplicate of which shall be submitted to the subordinate lodge or lodges represented on the advisory board for their approval. The chairman of the audit committee shall give timely notice, in writing, to the secretary and treasurer, to attend such audit, requiring them to produce all their books, accounts and vouchers.

(12) The trustees shall have power to invest such funds as the lodge may place in their hands, in such manner as the lodge

directs, subject to the approval of the Supreme or Grand Executive Council.

(18) The lodge physician shall examine all candidates for financial membership, sign their certificates of health and forward same to the lodge secretary; attend all sick members eligible for his services, and provide them with proper medicine; attend all members within a distance of three miles from the lodge room—members beyond that distance having no claim on his attendance; send in his book every three months to be revised; and for his services shall receive annually such sum as the lodge may decide; payable quarterly, for every financial member who does not owe more than three months' dues, and resides within the prescribed limits, which shall be payment in full for his services. Should the physician at any time neglect his duties, or be absent without providing a duly qualified physician to perform his duties to the lodge, such a sum as shall be paid for the services of another physician shall be deducted from his stipend.

PROPOSAL, ELECTION AND INITIATION OF CANDIDATES.

273. Any respectable boy having the constitutional qualification for membership, and desirous of securing membership in the Juvenile Department, shall present

to the lodge his application on the form provided for that purpose, as hereunder set forth, signed by two members recommending him, giving his name in full, residence, date of birth, age and religion of father and mother; also the lodge physician's certificate of good health and sound constitution.

APPLICATION FORM.

1. Name of Candidate in full
3. Date of Birth
4. Age
5. Country of Birth
6. Religion of Father Mother

FORM OF DECLARATION.

We, the undersigned, do hereby declare that the above statements are correct and true, and, should it ever be proved that we have made any false statement whatsoever, we will forfeit all claims we might otherwise become entitled to from the Society.

As witness our hands this . . . day of . . . 19 . . .

Signature of Candidates

Signature of Parent or Guardian

Proposed by

Seconded by

PHYSICIAN'S CERTIFICATE.

This is to certify that I have examined
.....and I find him in good health
and of sound constitution, and believe him
to be of the age of.....years.

As witness my hand this..day of..19..

..... Medical Examiner.

274. In every case the candidate must produce in writing his parent's or guardian's consent to joining. In the case of applicants over 1. years of age, who have no parent or guardian living, such consent shall be waived.

275. The application and declarations having been read at one meeting, and the lodge physician's report and managing committee's report being favorable, a vote shall be taken at the next meeting for his

admission, and if a majority of members present vote in favor of the candidate he shall be admitted. In no case can parents or guardians perform acts of membership for their children, or vote on the election of members. Every member shall be entitled to one vote, and in case of a tie the president shall have a casting vote, but no other voting power.

ENTRANCE FEES.

276. The minimum entrance fee shall be according to the following scale, to be paid before a candidate is initiated:

5 and under 12 years	\$0 50
12 and under 17 years	1 00

MONTHLY CONTRIBUTIONS

277. The minimum monthly contribution payable by each member shall be:

Under 12 years	20c. per month.
12 and under 15 years...	25c. per month.
15 and under 17 years...	30c. per month.

When a member attains the age of 12 years his contribution shall be increased from 20 to 25 cents per month, and at the age of 15 years it shall be increased from 25 cents to 30 cents per month. Benefits to increase similarly until he be transferred to an adult lodge of the Society or otherwise cease to belong to this Department.

SICK BENEFITS.

278. The minimum amount that shall be paid by a Juvenile Lodge to a member shall be:

5 years to 12, \$1.00 per week for 13 weeks, 50 cents per week for 26 weeks more.

12 years to 15, \$1.50 per week for 13 weeks, 75 cents per week for 26 weeks more.

15 years to 17, \$2.00 per week for 13 weeks, \$1.00 per week for 26 weeks more.

Every member in good standing in this Department shall be entitled to receive sick benefits upon a scale not less than as above, but no member shall receive any sick allowance or funeral benefit unless he has complied with this Constitution. Every member falling sick shall, within 48 hours of commencement of such sickness, notify his lodge secretary upon the form hereunder, forwarding the lodge physician's certificate of illness, or forfeit all benefits for the period prior to such notification.

FORM OF CLAIM FOR SICK ALLOWANCE.

To the Secretary of Lodge (name of Lodge)
Juvenile Department S. O. E. B. S.

I hereby claim the sick allowance of the above Society, to which I am entitled, and enclose physician's certificate.

Signature
 Residence
 Date

RECOVERY FROM SICKNESS.

Upon recovery from such sickness the form hereunder shall be sent in by every member of this Department to his lodge secretary within 48 hours thereafter.

FORM OF NOTICE IN CASE OF RECOVERY.

To the Secretary of Lodge (name of Lodge)
 Juvenile Department S. O. E. B. S.

I hereby notify you that I have recovered from my late illness.

Date
 Signature
 Certified by Physician

279. Members shall be entitled to medicine and medical attendance immediately on joining this Department.

FUNERAL BENEFITS.

280. Funeral benefits, according to the following scale, shall be paid by the Su-

preme or Grand Lodge to the juvenile lodge secretary, who shall witness the payment of the same to the proper parties, as follows: The minimum amount that shall be paid in case of the death of a member shall be as follows:

Under 10 years	\$5 00
10 years and under 12.....	15 00
12 years and under 15.....	20 00
15 years and under 17.....	25 00

Provided always the member was in good standing upon the books of the Supreme or Grand Lodge, and his own lodge. Every claim on the Supreme or Grand Lodge Funeral Fund shall be accompanied with a certificate of death, signed by the president and secretary, certifying to the deceased member's financial standing. Should any member transferred to an adult lodge, entitled to funeral benefits in this Department, die before he is entitled to such in the adult lodge, his nominee or representative shall receive the allowance pertaining to the juvenile lodge to which he formerly belonged. Should such member have no parent, guardian, or other nominee, or should a dispute arise as to who shall receive the funeral benefit, the juvenile lodge to which he belonged shall through the advisory board see that he is decently buried, and defray the expenses thereof; and any balance remaining thereafter shall become the property of such juvenile lodge.

LEVIES.

281. Five cents every three months shall be paid by the respective lodges for each member in good financial standing on the regular report to the Supreme or Grand Lodge. A registration fee of 20 cents shall be paid by the respective lodges for each new juvenile member returned to the Supreme Lodge, which sum shall be applied to the Juvenile Funeral Fund.

282. Every juvenile lodge neglecting to pay the usual funeral levies within one month after the prescribed time therefor, shall forfeit all claims to the Funeral Benefit Fund, and such lodge shall become liable for the payment of all funeral benefit claims that may arise during such forfeiture; but upon receipt by the Supreme or Grand Secretary of all such levies in full such lodge shall become entitled to receive from said Fund payment of all such claims thereafter arising.

282A. This department shall pay to the Supreme Lodge two per cent. of the general annual expenses of the Supreme Lodge for the purpose of defraying the cost of management of this department.

283. A member shall be entitled to full sick and funeral allowance at the expiration of 12 calendar months from the date of his entrance, providing he does not owe three months' dues. Sick pay shall com-

mence from the date on the physician's certificate of illness, if forwarded to the secretary at the proper time. No member shall be entitled to sick pay for less than six days, except after the first six days.

284. Any member allowing his contributions to remain unpaid for three months, shall be fined 10 cents, and the secretary shall notify his parent or guardian of such non-payment, and if not paid at the next monthly meeting he shall be suspended from all benefits until his arrears are paid. Any member twelve months in arrears shall stand expelled, but may rejoin as a new member.

285. Every member must bring his contribution card at the time of paying his contribution. Failing to do so, or should he lose it, he shall be supplied with another and charged five cents therefor.

286. In the event of the member's inability, from any cause whatever, to fill in the required particulars on either or both of the forms hereinbefore set forth, it shall be sufficient for the parent, guardian or other interested party to do so for him.

287. Any member going to work or following his usual occupation or scholastic duties, without first being declared off the funds as hereinbefore mentioned, shall not receive any sick pay that would otherwise be due to him.

288. No member who may be declared off the funds after receiving full and half sick pay for the same sickness, shall be entitled to full pay from the funds for the space of six months from the time he was declared off the funds; but should a member be declared off the funds with the consent of the physician of his lodge, and have occasion to renew his claim before the end of six months, he shall be placed in the same position as when he ceased to receive such sick pay, and shall be paid the same allowance which he was then receiving until the full amount allowed by the Constitution is paid; but should six months have elapsed from such declaration off the funds, he shall be entitled to a commencement of full sick allowance.

289. Any member while on the sick fund shall not be from home after 6 o'clock in the evening from the first of October to the thirtieth day of April, nor after 8 o'clock in the evening from the first day of May to the thirtieth day of September, all dates inclusive, without the physician's permission in writing which he shall forward to the Secretary within 48 hours, or he shall be fined 25 cents for each such offence.

290. Any member whose illness is caused by improper conduct shall receive no sick benefits from the funds of this Society.

291. Any member, not over 16 years of age, desiring to join another lodge, shall

notify the secretary of his lodge to that effect, who shall bring the application before the lodge, and, if granted, the secretary shall, free of charge, make out a clearance. The said member must produce such clearance to a lodge within two months from date of issue, together with a certificate of good health from the physician of the lodge he desires to join, and pay the sum of 25 cents on deposit of same together with all dues and contributions that may have accrued from the date of his clearance. Such clearance member shall be balloted for as in the case of a new member.

292. Should any lodge refuse to accept the clearance of a member, he shall be allowed the space of two months from the time of such refusal to return the same to his own lodge, which lodge shall be bound to receive the same, and shall charge the member with all contributions and fees that may be due from the date of clearance. Said lodge shall be responsible to said member for all benefits due to him until he joins another lodge or returns his clearance card to his own lodge; but under no circumstances shall the times above stated be exceeded. All clearances shall be signed by the president and secretary of the lodge, or shall not be legal. Should a member, after withdrawing his clearance and depositing the same in another lodge, require and be eligible accord-

ing to the Constitution, to receive benefits, the lodge he has joined shall pay the same. His former lodge shall be responsible for and pay to his new lodge half such benefits until the expiration of six months from the date of his clearance. The secretary of his new lodge shall, within seven days, notify the secretary of his former lodge when he was declared on the sick Fund. A clearance cannot be refused a member against whom no charges are pending.

293. Any member attaining the age of seventeen years desirous and eligible can be admitted a member of any adult lodge of this Society, whose entrance fee to the same shall be paid by the juvenile lodge, providing he is clear on the books, and produces a physician's certificate stating that he is in good health. Such initiation fee shall be the sum of 50 cents. Should a transfer member fall sick before being entitled to half sick benefits in the Adult Lodge, the Juvenile Lodge shall be responsible for the amount of \$2.00 per week or proportionate part thereof for 13 weeks, and if sickness continues thereafter \$1.00 per week or proportionate part thereof for the remaining weeks to the end of the first six months. After the first six months the adult lodge shall assume the sick liabilities according to the Constitution governing adult members. The transfer certificate must be deposited in an adult lodge within one month from the date of issue.

294. Should the adult lodge refuse to accept a transfer member from a juvenile lodge for any reason, the member transferring shall receive from his lodge a sum of not less than \$3 nor exceeding \$10, as shall be decided by the advisory board of the juvenile lodge, whose decision shall be final, and upon the tender of such sum he shall cease to have any further claim upon the Society, or any of its Departments.

ARBITRATION COMMITTEE.

295. Any member or his representative having any cause of complaint or claim against a lodge or member of this Department, shall forward a statement of such complaint or claim to the chief adviser of his lodge, who shall ask for an arbitration committee from the subordinate lodge to act in conjunction with one in the juvenile lodge, which arbitration committee shall decide the case, if possible, subject to a right of appeal to the Supreme or Grand Executive Council, Supreme or grand lodge, as the case may be, whose decision shall be binding, final and conclusive, and no legal proceedings shall be taken for any cause until all the rights and remedies under this Constitution shall have been exhausted.

296. All moneys of juvenile lodges that may not be required for immediate use

shall, with the consent of the advisory board, be invested in the names of the trustees in any chartered bank the said advisory board may direct.

297. Any member misbehaving himself during the time of meeting may be fined five cents for each offence. Any member wilfully destroying or damaging any property in or belonging to a lodge shall be suspended until he makes such property good to the satisfaction of the committee. Should it be proved at any time that a member, his parents or guardians, have concealed previous to his entering the Society any disease or infirmity with which the member had been affected, all payments and benefits shall be forfeited and the member expelled.

298. In the case of any matter or question arising in a juvenile lodge to govern which there is not provision in the Constitution governing this Department, action shall be had on such matter or question, in accordance with the provisions of the Constitution governing subordinate lodges. "Provided that the fees, contributions and benefits paid in Juvenile Lodges, under the jurisdiction of a Grand Lodge, may be increased by by-law of such Grand Lodge when sanctioned by the Supreme Lodge or Executive Council."

(2) Wherever in this Constitution the words "Supreme or Grand Lodge," or "Su-

preme or Grand Secretary," occur in conjunction, and there is, by said Constitution, some duties or obligations devolving upon a Subordinate or Juvenile Lodge of this Society, or any member of the same, or any approval or application required, it shall be read and understood that such Subordinate or Juvenile Lodge or member within a Grand Lodge territorial jurisdiction, shall perform such duty or obligation, or obtain such approval from or make such application to said "Grand Lodge, Executive, President, or Secretary," as the case may be; but otherwise to said "Supreme Lodge, Executive, President, or Secretary."

INTERPRETATION CLAUSE.

299. Whenever the words "in good standing" occur in this Constitution, they shall mean and shall be construed to mean "entitled to receive financial or pecuniary benefits," and wherever the word "suspended" occurs in this Constitution, it shall mean and shall be construed to mean "not entitled to receive financial or pecuniary benefits."

RULES OF ORDER FOR SUBORDINATE AND JUVENILE LODGES.

300. The Supreme or Grand Lodge Rules of Order shall, as far as practicable, be the rules of order governing subordinate and juvenile lodges.

LAWS—WHEN IN FORCE.

301. All laws, enactments or legislation of the Supreme Lodge shall come into force on the 1st day of January following the enactment thereof, unless otherwise ordered.

CONSTITUTIONAL AMENDMENTS.

302. This Constitution, or any part thereof, in relation to each and every Department of this Society, shall not be altered, amended, suspended or annulled unless by a two-thirds' vote of the Supreme Lodge in session, after notice given at the previous session or contained in the Sessional Papers.

T. FERGUSON,

Supreme President.

JOHN W. CARTER,

Supreme Secretary.

January 1st, 1911.

APPENDIX "A"

ORDER OF BUSINESS.

(For Subordinate and Juvenile Lodges.)

1. Opening of lodge.
2. Roll call of officers.
3. Reading minutes of previous meeting, which, if correct, shall be adopted and signed by the presiding officer.
4. The receiving and consideration of any reports from the committee in regard to sick members.
5. The receiving and consideration of reports of the committee in regard to character.
6. Balloting for candidates.
7. Initiation of candidates for membership.
8. The consideration of applications for beneficiary certificates.
9. Proposition of candidates.

10. Receiving and consideration of any reports of officers or special committees.
11. Nominations of officers and election thereof on the night set apart for that purpose.
12. Installation of officers on the proper night.
13. The reading and consideration of accounts and other communications in the hands of the secretary, and production of receipt from Supreme Secretary for the previous month's beneficiary dues, which shall be read from the President's station.
14. Are there any members desirous of advancement to the White Rose Degree?
15. Deferred business.
16. General business, good and welfare.
17. Report of receipts.
18. Closing of the lodge.

APPENDIX "B"

REGALIA.

The recognized Regalia of this Society shall be as follows:

Members' Badge as approved and adopted by the Supreme Lodge at Brantford, 1897.

The Official Emblem for members' use shall be the "White Ensign" approved and adopted by Supreme Lodge at Woodstock, 1895.

Subordinate Lodge Officers Regalia—Blue Silk Collar, with roses embroidered thereon; silver fringe all round. Presidents' and Past Presidents' with gold fringe.

Subordinate Lodge Presidents shall wear the Royal Coat of Arms, with crossed gavels in gold suspended in front of collar on the left breast.

Vice-President—Royal Coat of Arms, with crossed gavels in silver.

Treasurer—Royal Coat of Arms, with crossed keys in silver.

Secretary—Royal Coat of Arms, with crossed pens in silver.

Chaplain—Black Gown.

Supreme Lodge Executive Officers' col-

lars and cuffs shall be embroidered with roses in gold.

Grand Lodge Executive Officers' regalia shall be approved by Supreme Lodge.

Supreme President, in addition, shall wear a five-starred gold jewel, with Union Jack in centre.

Lodge Physician's Regalia shall be a sash made of white silk trimmed with blue, fastened with gold star with epaulet and ends trimmed with gold fringe.

Past Supreme President's Regalia shall be a neck ribbon of blue watered silk, three inches wide, with jewel suspended from same. Senior and Junior Guards may be provided with swords.

District Deputies' Badge shall be the emblem approved by Supreme Lodge or Executive Council.

The funeral Regalia of the Society shall be the reversible badge. No other Regalia shall be worn, excepting Marshal's, who shall have the roses on his collar draped, and his staff trimmed with black and blue ribbon.

The order of procession to be observed at funerals shall be: Officers and members walk in front of the hearse, officers in rear. On arriving at the cemetery, the procession shall open, permitting the funeral cortege to pass through its ranks, officers first and members following to the grave.

GENERAL INDEX.

The numbers throughout refer to Sections,
not pages.

SUPREME LODGE CONSTITUTION

(Sections 1 to 165 inclusive.)

(Abbreviation—S.L., "Supreme Lodge.")

ADJOURNMENT—

Motion for, when in order 141. To
be decided without debate 141

ADVISORY BOARDS—

Application, how made 69. Pre-
liminary meeting, how called 70.
District Deputy shall preside 77.
Dispensation, how granted or can-
celled 72. Qualification for mem-
bership 71. Powers 73 and 78.
Not obligatory on any lodge to join

74. Expenses	76. Quorum	75.
Regular Meeting		75
AGE OF CANDIDATES for Membership		2
ALLOWANCE per diem to S.L. Delegates		33
AMALGAMATION OF LODGES		29
AMENDMENTS to the Constitution. How made 301. By whom placed on Sessional Papers 26. How dealt with 162. When operative		301
AMEND, MOTION TO, when in order		141
APPEALS—		
To S.L. 51. From Arbitration Committee 241. First decision in force while appeal is pending 241. Power Supreme Lodge to hear 4 (9). Power of Supreme Executive to hear		28
From decision of the chair		152
For aid, how made		226
Committee on		38
AUDIT. Committee on		38
AUDITORS. Their election and duties		21
BADGES—		
For Members, District Deputies, Supreme, Grand and Subordinate Lodge Officers	Appendix B	
For Funerals	Appendix B	

BALLOT—

All Elections to be by 138. Conduct of Elections by 12. When being collected no other business to be done 147. Election of Committee of General Purposes by 34

BENEFICIARY DEPARTMENT (See Special Index).

Blank in Resolutions. How filled... 155

BONDS—

S.L. Officers 14. Supreme Secretary 16. Subordinate Lodge Officers' Guarantee Fund for 80

Bourinot's "Manual of Parliamentary Usage" to be the authority on disputed points of order 165

CANDIDATES—

Qualification of 3

CAPITATION TAX—

General 4 (7)

CHAPLAIN—

S.L. appointment of 10. Duties of 18

CHARTER. Grand and Subordinate Lodge. Granted by S.L. 4 (6), 62. How obtained 166. Must be displayed 172. May be revoked 4 (11), 228, 219, Members 171

COMMITTEES OF S. L.—

Special 29, 136 (2). Service on, obligatory 161
Required to report 159

CONSTITUTION—

- Observance of, obligatory 226.
 Amendments to, how made 302.
 Amendments to, when operative.. 301

CREDENTIALS—

- Committee on 38. Report on 132.
 To be granted to officers of past
 rank 67
 Detrimental Matter. Illegal to dis-
 seminate 66

DISPUTES—

- To be settled by District Deputy 45.
 by S. President 14.

DISTRICT DEPUTY S. PRESIDENT—

- Must be a Past President of a Sub-
 ordinate Lodge 43, 65. Appoint-
 ed by S. Ex. 43. Duties of: To
 install Sub. Lodge officers, 43;
 report to S. Sec. 45; rule on ques-
 tions in dispute 145; organize Ad-
 visory Boards 69. Has no power to
 make contracts 46. Shall have ex-
 penses paid 47. Cannot hold office
 in Sub. Lodge 49. Vacancy, how
 filled 48

ELECTION OF OFFICERS—

- When held 3. Mode of conduct-
 ing 11, 12
 Of General Purpose Committee... 36
 Appointment 10. Duties 13

- EMBLEMS.** Style, etc., governed by
 S. L. 4 (3)

ENGLISHMEN, DEFINITION OF . . .	3
ESTABLISHING THE SOCIETY	31
EXECUTIVE COUNCIL—	
How constituted 27. . . Powers 28, Vacancies, how filled	32
EXPENSES, HOW MET—	
of S.L. delegates 33. Instituting Grand Lodge 31. Instituting Sub. Lodges	31
FINANCE. Committee on	38
FUNERAL DEPARTMENT 81 to	89
GENERAL PURPOSES. S.L. Com- mittee of.	
How constituted and elected	34
GRAND LODGES—	
How formed 56. Jurisdiction 62. Membership 65. Powers and au- thority 63. Constitution and Gov- ernment 64. Officers elected 58. Officers appointed 59. Representa- tives to S.L. 60. May enact its own by-laws	61
GUARANTEE DEPARTMENT—	
How created and governed	80
GUARDS—	
Appointed by S. President 10. Du- ties	19
INSTALLATION OF OFFICERS	8
INVESTMENT OF FUNDS	20

JEWELS—

Must be authorized by S.L. 4 (8),
S. President, Appendix B.

JOURNAL of S.L. proceedings. To
whom sent 16

JURISDICTION of the Society 4

LAWS AND LEGISLATION. Com-
mittee on, 38. When in force 301

MARSHAL—

Appointed by S. President 10. Du-
ties 19

MEMBERSHIP. Qualification of ... 3

MILEAGE OF S.L. delegates. Amount
and how paid 33

MINUTES of S.L. to be kept by S.
Secretary 16. To be read 133

MONEY. All must be paid by cheque 17

MOTIONS—

How presented 140. Amendments
to, how dealt with 141.

NAME OF THE SOCIETY 1. Illegal
use of 229

NOMINATIONS—

To General Purpose Committee 35.
Acceptance of on S.L. Commit-
tees, obligatory 161

OBJECTS OF THE SOCIETY ... 1

OFFICERS OR THE S. L.—	
Style and titles 9. Appointments	
10. Absence at installation 12.	
Duties 13 to 21. Suspension 30.	
Reports from 14. Vacancies, how filled	32
Official Paper	79
Order of Procession at Funerals. Appendix B.	
PASSWORDS—	
Selected by S. President 14. Regulated by S. L.	4
PAST GRAND RANK—	
Credentials of 68. Only to be conferred on those who have served..	67
PER CAPITA TAX	200
PETITIONS AND MEMORIALS..	135, 154
POWERS—	
of S. L.	4
PRESIDENT—	
Election 8. Duties 14. Past S. Life Members of S. L.	5 (3)
PRESS. Writing to the Public	66
PRINTING. Committee on	38
PROTESTANT. Members and their wives must be	3
QUORUM OF S. L.	7
REGALIA—	
Decreed by S. L. 4. Detailed de-	

scription, Appendix B. Not to be worn at funerals	Appendix B
Registration necessary	88
Representative at S. L.	5 (2)
RETURNS—	
Quarterly financial 16. Annual from sub. lodges 4 (8), 42. Quarterly returns from sub. lodges 16 (3). S. L. Committee on 38. Failing to make	261
REVENUE OF S. L. How provided 4	(7)
RITUALISTIC WORK emanates from S. L.	4 (1)
RULES OF ORDER (and Order of Business)	132
SCRUTINEERS, appointment of	11
SEAL	16
SECRETARY, SUPREME—	
Election of 8. Applications to be filed with	16 (4)
SESSIONAL PAPERS—	
To be prepared 26. Notices on ...	302
SPEAKERS, CONDUCT OF	149
SUBORDINATE LODGES (See Special Index).	

SUPPLIES—

To be supplied by S. L. 4 (7).

Prices to be fixed by S. L. 4 (2)

SUPREME LODGE—

How constituted 5. Jurisdiction over Grand Lodges 63. Powers of 5. Source of all authority 4. Number from each lodge 5 (2). Expenses, how paid 33. Lodge dues must be paid 42. To receive copies of S. L. officers' reports 22. Legislation, when operative 301. Minutes to be kept 16. Place of holding 24. Quorum of members 7. Special sessions 14, 25. Time of holding 23

THE VOTE—

How decided 12. S. President has the casting vote 14. In election of committee of General Purposes ... 36
Illegal use of 229

TREASURER—

Election of 8. Duties 17

TRUSTEES. Election and duties of.. 20

VACANCIES. How filled

Supreme Executive 32. On S. L. Committee of General Purposes 41.
District Deputy 48

VICE-PRESIDENT—

Election of 8. Duties 15

VOTING—

Majority necessary in elections 12.
 Obligatory unless excused 161. Tie,
 how decided 12

Wives of members must be Protest-
 ant 3

WORK AND CEREMONIES—

Emanate from S. L. 4 (1) S. L.
 Committee on 38

YEAS AND NAYS. When taken 139

BENEFICIARY DEPARTMENT.

(Sections 90 to 131, inclusive.)

Acceptance of risks at reduced amounts	113
Acts violating	122
AGE OF MEMBERS—	
Limits of age 91, 93, 96. How computed	95
Aged members' benefits	114A
APPEALS decided by S. L.	123
APPLICATION FOR MEMBERSHIP—	
How made 93. Fees	94
ARREARS of payment—	
Forfeit of all benefits 117. S. Secretary to notify delinquents	119
Assessments	95
Extra	108
Beneficiaries to be nominated	111
BENEFITS—	
Amount of Certificate 94. Paid within 60 days 107. Revert to the department 121. Deficiency, how made up	108
CERTIFICATES—	
Issued by S. L. 129. Amount 94. May be increased 190. May be decreased 110. Reinstatement 118. Duplicate	130

Claims, payment of	107
Constitution binding on all members.	131
Deficiency in funds, how met	108
Executive powers	113
Expulsion from sub. lodge, forfeits membership	91
False statements invalidate certificate	120

FEEES—

Application 94. For increased amount of certificate 109. For decrease in same 110. Monthly scale of 95. Monthly scale (special) 97. Payable to sub. lodge secretaries 116. Payable to medical referee 115. For special examination 113. Of rejected applicant to be returned 113. Of Ben. members only..	198 (2)
--	---------

FORFEITURE OF CERTIFICATE—

Forfeits all benefits 106 For false statements 120. For habitual drunkenness 123. For suicide ...	122
---	-----

FUNDS—

General 95. Management 127. Reserve	126
Honorary members eligible to join..	91
Improper conduct forfeits certificate	122

INTESTACY. Evidence of to be furnished	127
--	-----

INTOXICANTS. Excessive use of ...	123
-----------------------------------	-----

LIABILITY. Extent of Society's ...	108
------------------------------------	-----

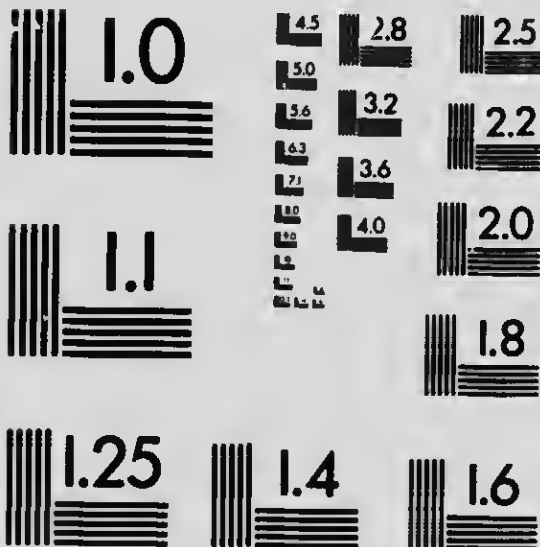
MEDICAL EXAMINERS—

Appointment by the lodges	128.
---------------------------	------



MICROCOPY RESOLUTION TEST CHART

(ANSI and ISO TEST CHART No. 2)



APPLIED IMAGE Inc

1653 East Main Street
Rochester, New York 14609 USA
(716) 482 - 0300 - Phone
(716) 288 - 5989 - Fax

Fees 94. Must not examine applicants	115
MEDICAL EXAMINATION—	
Cost of 113. Special 113. Urinary examination compulsory	128
OBJECTS OF THE DEPARTMENT..	90
PAYMENTS MONTHLY	95
PROBATE OF WILL. Copy to be filed	107
Proofs of Claim	107
Qualification of Members	91
Rates. How computed	98
Referee. Medical	115
REINSTATEMENT OF MEMBERS..	124
Rejected applicant's fee to be returned	93
Reports to be made monthly	112
RESERVE FUND	126
Revenue. How derived	6, 92
RISKS—	
Classification of 99. First-class 100. Hazardous 101. Extra hazardous 102. Change from ordinary to hazardous 103. From hazardous to extra hazardous 104. From hazardous to ordinary	105
Seal to be attached to all documents	129
SECRETARY, SUPREME—	
Supreme Sec. to be secretary of the department 112. Duties to sub. lodge 116. To receive fees, etc. ..	112
Suicide, effect of on claim	122

SUBORDINATE LODGE.

(Sections 166 to 262, inclusive.)

ABSENTEE MEMBERS—

May register with another lodge for medical attendance 205. To send certificates of sickness	205
Admission of expelled members or rejected candidates, illegal	219
Advisory Board	242

ALLEGIANCE TO THE CROWN, Declaration of	259
Appeals	241

APPLICATIONS FOR MEMBERSHIP	166
Not to be withdrawn 168 (2). Rejected candidate's re-proposal 168 (3). Application, etc., to be filed with Sup. Sec. 168 (4). Misstatement voids benefit 168 (5) Wife's illness necessitates release	168 (6)

ARREARS—

Members in arrears to be visited 188. Loss of benefits 209. Time penalty 209. Must be notified.	218 (2)
---	---------

ARBITRATION—

Appeal allowed to S. L. Executive Council and to S. L.	241. Charge
--	-------------

against lodge president 239. Committee, how appointed 230. How called together 232. President to preside 236. Members may be challenged 236. Refusal to attend on 235. Nature of Evidence admissible 236. Vacancies, how filled 240. Deposit required 234. Laying a complaint 231. Punishment 237. Settlement must be attempted 231. W. R. D. charges, how dealt with 230
 Assistant Secretary may be appointed 182

AUDIT—

To be held within 15 days after closing of lodge books 196. Secretary to be ready in five days 188. Treasurer to attend is requested 189. Trustees to attend if required 195

AUDITORS—

Substitutes may be appointed 185

BALLOT—

On Candidates 175. On clearance 213. For readmission 217. Compulsory on propositions 168. At elections 180. Scrutineers to be appointed 175.

BENEFIT FUNDS, SICK 203

Conditions of payment 208. Of clearance members 214. Forfeiture by improper conduct 209. Through arrears of dues 209

Increased	203 (2)
Benefit Funds, Funeral—	
How maintained	201
Benefit Fund, Special	197
Benefit Fund, Superannuation	197

BLACK BALL—

Effect of and how dealt with	176
Black book to be kept	188

BONDS—

Officers 185. Secretary's 188.	
Treasurer's 189. Trustees 195.	
President responsible for	185
Business to be transacted in the	
R. R. D.	173
By-laws. Lodges may enact their own	225

CANDIDATES—

Qualifications 3. Applications 168.	
Balloting for 175. In another juris-	
diction	176
Capitation tax	200
Cards. Contribution cards to be fur-	
nished	176

CERTIFICATES—

Character 168. Health 169. Res-	
ignation 216. Sickness 205. Ditto	
when absent	207

CHAPLAIN—

Election 182. Duties 190. Hon-	
orary members eligible for	180
Charges against a member to be in-	
vestigated	227

CHARTER—

How obtained 166. Must be displayed 172. May be suspended, forfeited or revoked 219. Members.. 171

Children—

Care of deceased members 220

Classes of membership 177

CLEARANCE CERTIFICATE—

How obtained 212. How transfers are made 213. When presented are to be investigated and balloted on 213. May be revoked for cause 215. Former lodges responsible for benefits 214. Refusal to grant, how dealt with 260

Constitution—

Obedience compulsory 226; Amendments, when in force 301. Disobedience to, may cost charter 288.

Copy of, to be given to new members

..... 177

Contempt 215

Contingent Fund 197

Delegates to S. L. 182

DEFUNCT LODGES—

How lodges may become defunct

219. Restoration of 219 (3)

Election of Officers 182. Qualification 180. Date of 178. Those who

may vote on 179. To be by Ballot

180. Tie vote, how settled 180. Of

Managing Committee 180

Executive Officers. (See "Officers.")

Only through Arbitration Commit-

tee 218. Effect of 218. S. Secretary to be notified 188. Conditions of reinstatement	217
Extinct Lodges. (See "Defunct Lodges.")	
Formation of Lodges	170

FEES AND DUES—

Initiation, Scale of 199. Honorary members 198, 199. Life members 198. Capitation Tax 200. Proposition 168. Clearance 212. Juvenile transfer 198. Resignation 216. Readmission 217. Special levy 199. Registration 202. Funeral levy 201. Special rates may be granted 203. When to be paid 188. Must be prepaid 198. If not paid charter may be revoked	228
Of option members	199

FINANCIAL MEMBER—

In one lodge only	177
-------------------------	-----

FINES AND PENALTIES. For

Admitting rejected candidates or expelled member 219. Criminal conduct 256. Immorality 256. Loss of Rituals 272. Making false statements 258. Disobedience to the chair 256. Failure to produce books 257. Failure to make returns 261. Making false statements 258. Neglect of duty 191. Officers absent from lodge 181. Refusing to attend arbitration 235. Refusing to

fill office after election 178. Re-
fusing to grant a clearance 260.
Swearing allegiance to a foreign
power 259.

FUNDS—

Benefit 197. Repleted 199. Of De-
funct Lodges, how disposed of 219

FUNERAL LEVY—

Levy, how paid 201

GOOD STANDING, Definition of the
term 299
Guards—

Inner, duties of 192. Outer, duties
of 193
Hardship, members reduced to 220

HONORARY MEMBERS—

Initiation and Annual Fees 198,
199. Age of 2. Voting privileges
177. Eligible for Chaplain 180.
Eligible to join the Beneficiary De-
partment 91. May be expelled ... 218
Illegal use of Society's name 229
Improper conduct forfeits benefits... 209
Incapacitated, members permanently. 210

INCORPORATION 167

INITIATION OF CANDIDATES—

Fees 198. Conditions governing
176. Two weeks between propo-
sition and initiation 168
Installation of Officers—

Mode of procedure 183. Must not be installed by proxy	183
Intoxicating liquors	173
Investing lodge funds	197
Jewels, when to be worn	223

LEVY—

Special, to pay benefits 199. For capitation tax	200
Life Honorary Membership	198
Loss of Ritual	262
Lodge Room, conduct in	257
Laws, when in force	301

MANAGING COMMITTEE—

How chosen 180. Composed of 3 or more 191. Duties 191. First committeeman an Executive Officer	182
--	-----

MARRIAGE—

Members to give notice of 88. No benefits on second	88
---	----

MEDICINE	194
Members, when to provide their own	203, 205, 206

MEETINGS—

When held 173. Must not be changed without permission 170. Special	185
--	-----

MEMBERS—

Application 168. Initiation 176. Qualifications 3. Resignation 216. Readmission or resigned 217. To visit the sick 191. Permanently disabled 210. Reduced to hardships
--

220. Living in a foreign land 209.
 New members entitled to medicine
 211; and a copy of the Constitution
 176. Responsible for doctor and
 medicine 203, 205, 203

MONEY—

Seven financial members to work on
 174. Order for, by whom signed
 185. To be paid the Treasurer
 immediately 188. Order on the
 Trustees 195
 Name of the Society 1. Illegal use
 of the 229
 New Lodge—
 Formation of 170. Consent of ex-
 isting lodges must be obtained ... 170
 Obedience to the Constitution Com-
 pulsory 226

OFFICERS—

Titles 182. Nomination and elec-
 tion 178. Installation 183. Duties
 184 et al. Must hold W.R.D. 180.
 Can only hold one Executive office
 180. Honors of the term 181.
 Bonds 185. Absentees must not be
 nominated 178. Punishment for
 improper conduct 256. Continued
 absence vacates position 181. Va-
 cancies, how filled 101

OPERATIONS, SURGICAL, must be
 specially arranged for 194
 Option members' initiation fees 198
 Order of Business Appendix A

PASSWORD—

- To be given by the President only
 221. Who are entitled to receive
 221. No admission without 221.
 Absentee members, how to obtain. 221

PAST PRESIDENT—

- Duties of 186. Regalia 223. Secretaries may be created 188
 Penalties 256
 Permanently disabled members 210

- PRESIDENT.** (See also "Officers and Arbitration.") Election of 180. Duties 184. Ex-officio member of all committees 185. Qualifying term 180. Voting rights 185. Absence from post 187. Charges against 239

Property of the Lodge—

- In charge of the officers 184. Loss of 262

PROPOSITIONS—

- Fees 168. Cannot be withdrawn 168. Time limit on 176. Forfeited 176 (3)

- PROTESTANT.** Members and their wives must be 3
 Protested election 175

PHYSICIAN, LODGE—

- Must be a member of the order if possible 194. To be furnished with quarterly list 188. To attend members 194. To supply medicine 194.

To be allowed mileage 194. To provide substitute if absent 194. Surgical operations subject to special arrangements	194
Qualifying term—	
For President 180. For Secretary 180. S. L. Delegates	6
QUORUM—	
Of members 174. Of auditors ...	196
Readmission, of rejected or expelled members 217. Of resigned members	217
REGALIA—	
Description of, Appendix B. When to be worn 223. Committee responsible for	191
RECOVERY—	
From sickness	194, 204, 210
Registry book to be kept	176
Registration requisite	88
Registration fees	202
Representation to S. Lodge	5
Resignation of membership	216
RETURNS to be made	
By sub. lodge secretaries 188. To be certified to by the auditors	196
RITUAL—	
President responsible for safe custody of 185. Loss of	262
SALARIES—	
Secretary's 188. Physician's 194. Committee	191

SCRUTINEERS at elections 173

SEAL. Every lodge to have a 224.

To be affixed to all documents ... 224

SECRETARY—

Election 180. Assistant may be appointed 182. Qualification 180. Duties 188. To give bonds 188 (9). To be remunerated 188 (10). To notify clearance member's former lodge in case of sickness 214. To pay funeral benefits 188 (8). Report re-instated members 188 (2). Keep black book 188 (3). Give notice of elections 188 (4). Collect fees 188 (5). Notify Sup. Sec. of rejections and expulsions 188 (6). Close his books 188 (7). Report death of members 188 (8). Make quarterly returns 188 (10)

SICKNESS—

Secretary to notify committee 188. Committee to visit 191. To report thereon 191. Benefits 203, 204. Conditions of payment 209. Paid by subordinate lodges 203. Full time recommencing 203 (4). Stopped and recommencing 204. Not paid if member is in arrears 209. Members must report within forty-eight hours 208. Also weekly during illness 208. Members must not work 209 (5). Absentee members 209. Members distant from lodge

205. Caused by improper conduct	
209 (2). Caused by professional reason	209 (3)
Special meetings	185
SUPERANNUATION BENEFITS	210
Tie vote. How settled	185
TREASURER—	
Election 180. Duties 189. Must not hold over \$50	189
TRUSTEES. Election, duties	195
Use of the Society's name, illegal ...	229
VACANCIES. How filled—	
Among officers 181. S.L. Delegates 181	
VICE-PRESIDENT—	
Election 180. Duties	187
Visiting members	122
VOTING—	
Who has the right	179
WHITE ROSE DEGREE	243 to 255
WIFE. (See also "Marriage.")	
Health of 168. Religion 3. Death benefit 86. No second death benefit	
88. Exemption from liability for. 168	

WHITE ROSE DEGREE.

(Sections 243 to 255, inclusive.)

(Abbreviation W.R.D. "White Rose Degree.")

AMALGAMATED W. R. D. LODGES
not permissible 255

BALLOT for candidates 251

BY-LAWS. May enact 252

CANDIDATES—

Must be in good standing in sub.
lodge 244. Must be recommended
as desirable 248.

Certificate of character 248

Dispensation to confer the Degree... 248

Executive officers must have W. R.
Degree 180

Expenses to be paid out of W. R. D.
fund 246

Expulsion of members 254

Fee for advancement 245

FORMATION OF W. R. D.	243
FUNDS—	
To be kept separate 246. Under control of W. R. Degree	252
MEETINGS—	
To be held quarterly 249. To be reported to S. Sec.	250
Officers to be those of the sub. lodge..	247
Power to confer the degree	248
PROPERTY NOT TO BE REMOVED	
from lodge room	253
Reinstatement of members	254
Rejected candidates may renew ap- plication	251
Suspension of members	254
TIME QUALIFICATION for advance-	
ment 248. Exception	248

JUVENILE DEPARTMENT.

(Sections 263 to 300, inclusive.)

ADULT LODGES—

Juveniles under supervision	242,
267. Transfer from Juvenile lodges	
291. Refusal to accept transfer..	292

ADVISORY BOARD	268
Election and duties 242. Shall	
choose officers 242. Shall superin-	
tend investments	242

ADVISORY SECRETARY—

Election 269. Duties	272
----------------------------	-----

ADVISER—

Chief; duties 272. Vice-Chief; du-	
ties	272

AGE OF MEMBERS	267
----------------------	-----

Appeal. Right of, from action of com-	
mittee	295

Application for membership	273
----------------------------------	-----

Arbitration Committee	295
-----------------------------	-----

Arrears of dues. Suspension for ...	284
-------------------------------------	-----

AUDIT. When held	272
------------------------	-----

AUDITORS—

Election 269. Duties	272
----------------------------	-----

BENEFITS—

Sick 278. To gradually increase
 277. Medical attendance and medi-
 cine 279. Funeral 280. Must be
 in good standing to receive 284.
 When entitled to 283. Renewing
 claim after declaring off 288. Con-
 ditions 289. For clearance mem-
 bers 293.

CANDIDATES—

To be examined by physician 272

CERTIFICATES—

Physician's 273. Death 280. Clear-
 ance 291. Transfer 293. Declar-
 ing on and off Sick Fund 278-287

CHAPLAIN—

Election 269. Duties 272

CLEARANCE CERTIFICATE—

How obtained and disposed of 291.
 Cannot be refused 292. Procedure
 if acceptance be refused 292. Sick
 benefit to clearance members, how
 paid 292
 Complaint of members, how dealt
 with 294

COMMITTEE OF MANAGEMENT—

Election 269. Duties 272

CONSTITUTION—

Authorized by S. L. 264. Sub-
 lodge constitution to govern where
 necessary 298
 Contribution Cards must be produced 285

DECLARATION—

Of candidates	273.	Of parents	
273.	Of physicians	273
Distance limits for	Physician's ser-		
vices		272

ENGLISH.	Ancestors must be	267
----------	-------------------	-------	-----

EXECUTORS.	Members dying with-		
out		280

Expulsion for fraud	297
---------------------	-------	-----

FEEES AND DUES—

Entrance	276.	Monthly	277.	In-	
crease in	277.	Registration	281.		
Funeral levy	281.	Non-payment of			
282.	Initiation into adult lodge..		293		

FINES AND PENALTIES—

For non-payment of funeral levy	
282.	For non-payment of dues 284.
For not declaring off sick list prop-	
erly 287.	For misbehavior 297.
For being from home while on sick	
list 289.	For loss of card 285

FUNDS—

How held and paid out	272
-----------------------	-------	-----

FUNERAL BENEFITS—

Amount	280.	Paid by S.L.	280.
Levy	281.	Failure to pay forfeit	
benefits	282.	Members dying in	
adult lodge		280

GUARDS—

Election	269.	Duties	272
----------	------	--------	-------	-----

INSTALLATION OF OFFICERS 271

MEMBERS—

Age and other qualifications 267.
 Election 275. Must be in good
 standing to receive benefits 280.
 Suspension for non-payment of dues
 284. Expulsion at end of twelve
 months 284

OBJECTS OF THE DEPARTMENT.. 268

OFFICERS—

Names 269. Elections 269. In-
 stallation 271. Duties 272

PARENTS—

Must be Protestant 267. May not
 act for members 275. Consent must
 be procured before joining 274. De-
 claration 273. May fill in sick cer-
 tificates 286

PHYSICIAN—

Election 270. Duties 292. Neglect
 of duty 272. Certificate 272

PRESIDENT—

Election 269. Duties 272. Right
 to vote 276
 Ritual, authorized by S.L. 264
 Rules of Order (See S. L. Constitu-
 tion).

SICK. (See also "Benefits.")

To be visited 272

SUPREME LODGE—

Authority 263

SUSPENSION—

For non-payment of dues 284. For
destroying lodge property 297

TRANSFER TO ADULT LODGE—

When eligible 293. Procedure, if
refused by adult lodge 294



