

CANADIAN Contract Record

*A Weekly Journal of Public Works, Tenders,
Advance Information and Municipal Progress*

This Paper Reaches Every Week the Town and City Clerks, Town and City Engineers, County Clerks and County Engineers, Purchasers of Municipal Debentures and Leading Contractors in All Lines Throughout Canada

VOL. 15.

TORONTO, MONTREAL AND WINNIPEG, JULY 6, 1904

No. 21.

THE CANADIAN CONTRACT RECORD

PUBLISHED EVERY WEDNESDAY

As an Intermediate Edition of the Canadian Architect and Builder.

Subscription Price, \$3 per annum, payable in advance.

THE C. H. MORTIMER PUBLISHING COMPANY

of Toronto, Limited,
CONFEDERATION LIFE BUILDING, TORONTO.
Telephone Main 2562.

Branch Offices:
36 Alliance Building, Montreal,
Telephone Main 2299.
310 McIntyre Block, Winnipeg.
21 Great St. Helen's London, England.

Subscribers who may change their address should give prompt notice if same. In doing so give both old and new address. Notify the publishers of any irregularity in delivery of papers.

WANTED

Good cement property: limestone and shale or clay preferred; must be well located near railroads, and good water supply. Address, "Limestone," care of CONTRACT RECORD, Toronto, Ont.

To Bridge Builders and Cement Concrete Contractors.

Sealed tenders addressed to the undersigned and marked "Bridge Tenders" will be received until noon on THURSDAY, JULY 14th, 1904, with plans and specifications for a Steel Overhead Truss Highway Bridge, to be erected over a branch of the Maitland River, about four miles west of Atwood, Ont.

The bridge to be one span seventy-five feet long from pin to pin, with sixteen foot roadway, steel joists and wheel and hub girders.
Alternative tenders to be given for 5-inch cedar or reinforced cement concrete floor. The bridge to carry a moving load of at least 125 pounds per square foot of floor area. Separate tenders will also be received for cement concrete abutments for above bridge. Plans and specifications for the abutments may be seen at my office, Main street, Listowel.

W. E. BINNING, Architect.
JAS. DONALDSON, County Commissioner.
R. T. KEMP,
Listowel, June 25th, 1904.

TENDERS

will be received by the undersigned up to 1st August, 1904, for the purchase and removal of the **Old Water Saw Mills, formerly the property of Gilmour & Co., Gatineau Mills, near Chelsea, Que.** containing probably half a million feet of Lumber and Timber, besides Machinery. **Separate Tenders** wanted for "Iron, Shafting, and Machinery," and for "Lumber, Timber, and Roofing."

All material to be removed from the premises before the 1st May, 1905.

TERMS—Twenty-five p.c. on acceptance of tender, balance in cash as material is removed from the premises.

The highest or any tender not necessarily accepted.

GILMOUR & HUGHSON, Limited,
HULL, QUE.

[FOR ADDITIONAL ADVERTISEMENTS FOR TENDERS SEE NEXT PAGE.]

Derrick For Sale

I have a first-class Derrick, suitable for handling stone or any other heavy material, which I would sell or rent. For particulars apply to
WALTER CLARK, Contractor,
Sarnia, Ont.

Galt Sewerage System.

TO CONTRACTORS.

Sealed tenders, addressed to the undersigned, will be received up to 12 o'clock noon, WEDNESDAY, JULY 6th, for the construction of 10,500 lineal feet of Trunk Sewers in the Town of Galt. Plans and specifications may be seen and forms of tender obtained after Wednesday, 22nd June, at the office of the Town Clerk, Galt, or the office of Wm. Mahlon Davis, Engineer, Economical Block, Berlin.

The lowest tender not necessarily accepted.
Tenders for lateral sewers will be received up to 12 o'clock noon, FRIDAY, 29th JULY. Plans and specifications may be seen at the office of the Town Clerk, Galt, or the office of the Engineer, Economical Block, Berlin, after Friday, 15th July.

JOSEPH MCCARTNEY,
Town Clerk.

Tenders for CEMENT-CONCRETE SIDEWALKS

Sealed tenders, addressed to the Clerk of the Village of Hanover, will be received up to 6 p.m. of 14th JULY, 1904, for the construction of some 120,000 square feet of Cement-Concrete Sidewalks.

An accepted Bank Cheque, payable to the Village Treasurer, for the sum of 5% of the contract price, must accompany all tenders, to be forfeited if the successful tenderer declines the contract and will be returned in case of non-acceptance. The plans, specifications, general conditions and form of contract and tender, may be seen at the office of the Village Clerk. The lowest or any tender not necessarily accepted.

DUNCAN CAMPBELL,
Village Clerk.
R. McDOWALL, C. E.,
Village Engineer.
June 24th, 1904.

To Sewer Contractors

Sealed tenders, addressed to John Morrison, City Clerk, Woodstock, will be received up to 7:30 p.m. THURSDAY, THE 14TH DAY OF JULY, 1904, for the construction of about 2000 lineal feet of 6", 8", 9", 10" and 12" glazed Tile Sewers. Plans and specifications may be seen at the office of the undersigned. The lowest or any tender not necessarily accepted.

F. J. URE,
City Engineer,
Woodstock, Ont.

Tenders for Sewers

Sealed tenders, addressed to Wm. Irwin, Chairman of the Board of Works, Warrton, Ont., up to SATURDAY, 10th JULY, 1904, for the following:

- 1.—24" Sewer Pipe, 666 ft. Supply of Pipe; 24"x6" V. Jcts., 6 pieces; 18" Sewer Pipe, 1172 ft.; 15" Sewer Pipe, 1780 ft.; 12" Sewer Pipe, 1000 ft.; 9" Sewer Pipe, 352 ft.; 18"x6" V. Jcts., 80 pieces; 15"x6" V. Jcts., 48 pieces; 12"x6" V. Jcts., 22 pieces; 9"x6" V. Jcts., 28 pieces.
- 2.—Construction of the following—665 ft. of 24" Pipe Sewer; 1332 ft. of 18" Pipe Sewer; 1828 ft. of 15" Pipe Sewer; 1144 ft. of 12" Pipe Sewer; 438 ft. of 9" Pipe Sewer; 7 Manholes; 3 Lampholes.
- 3.—Supply of above Pipe and Construction of above Sewers.

A certified Bank Cheque for 5 per cent. of the contract price, payable to Treasurer, Town of Warrton, must accompany each tender, the same to be forfeited if the successful party decline the contract, or fail in the performance thereof, and will be returned in case of non-acceptance.

Plans and specifications may be seen at the office of the Town Clerk. The lowest or any tender not necessarily accepted.

WM. IRWIN,
Chairman Board of Works.
R. McDOWALL, C. E.,
Town Engineer.

TENDERS FOR PUMPING ENGINE BRANDON WATER WORKS

Sealed tenders will be received by the City of Brandon, until 12 o'clock, noon, of MONDAY, AUGUST 8, 1904, for the furnishing and erecting in the Water Works Pumping Station ready for operation:

A.—One Compound Condensing Vertical Pumping Engine of 2,000,000 Imperial Gallons capacity in twenty-four hours.

B.—One Triple Expansion Condensing Vertical Pumping Engine of 2,000,000 Imperial Gallons capacity in twenty-four hours. (Only one Pumping Engine is intended to be purchased). The City Council reserves the right to accept either pump, and also the right to accept or refuse any or all tenders. Each tender must be accompanied by a cash deposit or accepted cheque on some chartered bank of Canada for \$4,000.00, payable to the order of the City of Brandon as security that the successful tenderer will enter into a contract when called upon to do so.

Copies of plans, specifications, proposed contract, and all information necessary may be obtained from W. H. Shillinglaw, City Engineer, Brandon. All tenders must be sent by Registered Post addressed to

J. B. WHITEHEAD,
Secretary-Treasurer.
Brandon, Man., Can.
June 21, 1904.

TENDERS

Tenders will be received up till noon the 13th INST. by the undersigned for all the various trades required in the erection of a Bank Building at Ayr, Ont., for The Canadian Bank of Commerce.

Plans and specifications may be seen at the local office of the Bank of Commerce, Ayr, or at the office of

DARLING & PEARSON, Architects,
2 Leader Lane, Toronto.
The lowest or any tender not necessarily accepted.

**Notice to Contractors
COUNTY OF YORK**

Tenders will be received by the undersigned up to noon of FRIDAY, JULY 15, 1904, for construction of one Masonry or Concrete Abutment for the Scarlett Bridge over the river Humber north of Lambton Mills. Plans and specifications may be seen and all necessary information obtained at the office of the undersigned, 57 Adelaide Street East, Toronto.

The lowest or any tender will not necessarily be accepted

By Order,

J. McDUGALL,
County Engineer.

Toronto, July 4th, 1904.

TENDERS

Tenders will be received until six o'clock p. m. of 15th JULY, 1904, at the office of, and addressed to the General Manager of, The Hamilton Radial Electric Railway Company, 128 King Street East, Hamilton, Ontario, endorsed "Tenders for Oakville Extension."

Work embraces clearing, grading, fencing, excavation, embankments, bridge piers and abutments in concrete and stone work, and all necessary completion of roadbed ready to receive ties and rails, for extension of Radial Railway from present terminus at Burlington to town of Oakville, a distance of approximately 10 1/4 miles.

Plans and specifications may be seen at the office of the Company on and after Thursday, June 30th, 1904.
The lowest or any tender not necessarily accepted.

WM. G. HAWKINS,
General Manager.

Hamilton, June 27th, 1904.

TENDERS WANTED

Sealed tenders will be received by the undersigned up to NOON OF SATURDAY, JULY 10, for the erection of three

Steel Bridges

on Stone or Concrete Abutments in the Township of East Zorra, Oxford County. Lengths of bridges 35 feet, 30 feet and 14 feet. Width of roadway 14 feet. Tenders to furnish plan and specifications of either bridge or abutments and to state price per lineal foot for bridges and per cubic foot for masonry. Distance from railway station, about four miles.

The lowest or any other tender not necessarily accepted. Tenders will be opened and contract awarded if satisfactory at the Royal Hotel, Woodstock, on above date at 2 o'clock p. m.

JAMES ANDERSON,
Clerk East Zorra,
South Zorra P. O.

M. Guertin & Cie, contractors, Montreal, have dissolved.

The assets of the Capital Sand & Brick Company, Ottawa, are announced to be sold under a chattel mortgage.

Arthur Belanger has registered the business of A. Belanger & Cie, general contractors, Montreal.

Ernest David and Enile Colas have formed a partnership as painters, etc., in Montreal, under the name of David & Colas.

The Dominion Brass Works, Limited, recently incorporated at Port Colborne, Ont., will manufacture and deal in plumbers' supplies, valves, hardware and all kinds of brass goods. They have acquired the Canadian patent for the manufacture of the Huxley valve. The promoters include S. G. Beckett, H. M. L. Weller, and W. A. Hare, all of Toronto.

CONTRACTS OPEN.

TRURO, N.S.—It is proposed to expend \$7,000 on sewer extension.

PEMBROKE, ONT.—The county council will issue \$15,000 of debentures.

GLACE BAY, N.S.—Considerable pavement work is to be undertaken at once.

BIRTLE, MAN.—An addition will be built to the public school, at a cost of \$3,000.

STARBUCK, MAN.—The Lutheran congregation intend building a new church.

ORANGEVILLE, ONT.—The town has purchased a site for a \$10,000 library building.

SELKIRK, MAN.—The corner stone of the new Presbyterian church was laid last week.

GREENWOOD, B. C.—The Yale Lumber Company will build a large saw mill here.

TEESWATER, ONT.—J. Olheiser is preparing to build a new residence of cement blocks.

MAYOOK, B.C.—The Standard Lumber Company purpose building a new saw mill this year.

ARTHUR, ONT.—The congregation of St. Andrew's church will build a new manse this summer.

RAINY RIVER, ONT.—The Council will purchase a steam fire engine and build a fire hall.

ALYMER, QUE.—Contractors are figuring on the construction of a sewerage system for this village.

MARKHAM, ONT.—About 4,000 feet of granolithic sidewalks will be constructed here this summer.

NORTH VANCOUVER, B. C.—The ratepayers have approved of the construction of a waterworks system.

MONKTON, ONT.—The corner stone of the new Methodist church was laid last week; estimated cost, \$7,000.

ST. THOMAS, ONT.—The Pere Marquette Railway Company have commenced work on their new round house.

FORT WILLIAM, ONT.—The Pittsburg Coal Company have selected a 35-acre site for their coal handling plant.

PORT HOPE, ONT.—The Grand Trunk Railway Company will erect a new station and a large coaling depot here.

NORTH BAY, ONT.—W. J. Devlin, of Pembroke, has organized a company here to erect a foundry and machine shop.

WETASKIWIN, N.W.T.—J. W. Byers, town clerk, desires bids by 22nd inst. for purchase of \$25,000 ten year debentures.

GODERICH, ONT.—The County Council will borrow \$20,000 to pay for the addition to the House of Refuge and for new bridges.

BURNS, ONT.—John Davidson, Reeve, will receive tenders up to 30th inst. for construction of the Hunter drain, Mornington.

BRIDGEBURG, ONT.—Henry Emerick desires tenders by July 11th for construction of 2,200 feet of pipe sewer on Jarvis street.

PALMERSTON, ONT.—John Galt, C.E., Toronto, is making preliminary plans for sewerage and waterworks extension here.

BURFORD, ONT.—The site for the new armouries here has been selected, and plans will be prepared and the contract let immediately.

PETERBORO, ONT.—W. G. Morrow will receive tenders up to 8th inst. for installation of heating apparatus in the Central school.

THESSALON, ONT.—B. C. Case, town clerk, will receive bids up to 20th inst. for purchase of \$1,500 debentures.

SEAFORTH, ONT.—The Canadian Bank of Commerce have purchased property on which to erect a new building.

BARRY'S BAY, ONT.—The Dominion government is asking for tenders up to 20th inst. for construction of wharf and approaches here.

KAMLOOPS, B.C.—It is proposed to construct a sewerage system for the town. An engineer will likely be engaged to prepare plans.

MARYSVILLE, B. C.—The Staples Lumber Company propose to build a bridge over the St. Mary's river at the mouth of Perry creek.

BATHURST, N.B.—The Bathurst Light & Power Company purpose developing a water power on the Tatagouche river near this place.

YARMOUTH CENTRE, ONT.—Tenders have just been taken for erection of a town hall. Plans by N.R. Darrach, architect, St. Thomas.

FORT WILLIAM, ONT.—J. Dyke has purchased additional property, which will enable him to build a larger store than at first contemplated.

SARNIA, ONT.—M. Burrows, architect, has prepared plans for remodelling the second and third floors of the W. B. Clark building on Front Street.

PRINCE ALBERT, N.W.T.—The congregation of St. Paul's Presbyterian church have decided to build a new edifice. Rev. C. G. Young is pastor.

DEPOT HARBOR, ONT.—J. W. H. Watts, architect, of Ottawa, is preparing plans for a Presbyterian church to be built here, to cost about \$2,500.

NIAGARA FALLS, ONT.—Byron Brookfield is preparing to build on Victoria avenue.—A residence will be built on Simcoe street by A. S. Buckley.

KEARNEY, ONT.—J. L. Reaume, of Essex, has purchased the McIvor property in this town, and will build a saw mill and stave and heading factory.

CREEMORE, ONT.—John Galt, C.E., Toronto, is making surveys for a waterworks system here, and expects to call for tenders about August 1st.

CORNWALL, ONT.—Plans for a new rectory for Trinity Memorial church are being prepared by J. W. H. Watts, architect, of Ottawa; brick, cost \$5,000.

PARIS, ONT.—The council will submit a by-law to the ratepayers to raise an additional \$10,000 to complete the new lighting plant and waterworks system.

WIARTON, ONT.—William Irwin, Chairman Board of Works, will receive tenders up to 16th inst. for supplying a large quantity of pipe and construction of pipe sewers.

NORTH LANCASTER, ONT.—A. J. Macdonald, township clerk, will receive tenders up to 16th inst. for construction of a bridge over Sutherland's Creek.

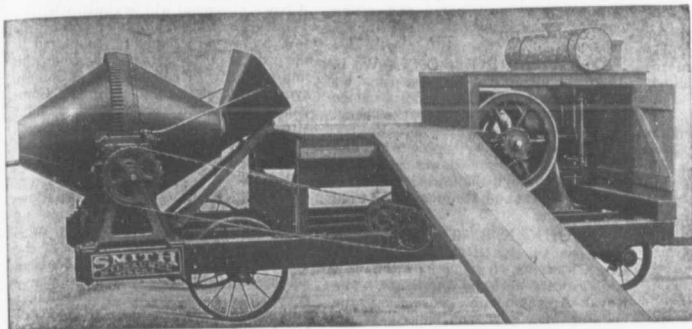
MINNEDOSA, MAN.—John McMillan will build a fine residence on Main street south. H. W. Hilliard, Isaac Bolton and T. W. Roche will each build a residence.

WINDSOR, ONT.—The congregation of the Windsor avenue Methodist church have accepted the plans for new church to cost \$40,000, and tenders will be invited at once.

ST. LOUIS, QUE.—A. F. Vincent wants bids by 7th inst. for building of sewers end laying of water mains on Sanguinet and Lauretta streets. Plans by J. E. Vanier, Montreal.

GANANOQUE, ONT.—It is reported that J. M. Campbell has decided to move

Concrete Mixers For Street Work



The Smith New Model Street Concrete Mixer is a favorite among cement sidewalk and pavement contractors, being well known as a strong, portable and easy operating mixer, giving a large capacity per day. We furnish the Smith Mixer in several sizes with or without steam, gasoline or electric power — New Mixer Catalogue on request.

W. H. C. MUSSEN & CO.,

Railway, Mining and Contractors' Supplies

MONTREAL, P. Q.

Portland Cements

Highest Grade

Canadian, German, English and Belgian

DRAIN PIPES and Connections of all kinds.
PAVING BRICKS, ENAMELLED BRICKS,
FIRE BRICKS, FIRE CLAY, Etc., Etc.

F. HYDE & CO.,

31 Wellington Street

MONTREAL

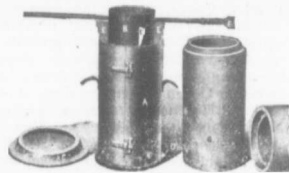
STEEL MOULDS

Latest Improved Making 4' to 36'

CONCRETE TILE

All kinds of ROAD MAKING MACHINERY and CONTRACTORS' SUPPLIES.

SAWYER & MASSEY CO., Limited
Hamilton, Canada.



Moulds and the Tile they make.

Portland Cement...

HIGH GRADE GERMAN BRANDS FOR GRANOLITHIC AND ARTIFICIAL STONE SIDEWALKS.

Sewer Pipes, Best English Cements. Best Belgian Cements
Culvert Pipes, &c. W. McNALLY & CO., Montreal

RAILS

We Can Quote for
Cammell's
STEEL RAILS
All Sections
All Weights
Also Relayers

F. H. HOPKINS & CO., 286 St. James St., MONTREAL

Successors to the Late James Cooper.

July 6, 1904
B. C. Case, up to 20th ebentures.
he Canadian rchased pro- building.
-The Dom- or tenders up of wharf and
proposed to tem for the likely be en-
The Staples : to build a river at the
he Bathurst urpose devel- i Tatagouche
E, ONT. — in for erection i. R. Darrach,
T.—J. Dyke operty, which i larger store
rrrows, arch- r remodelling i of the W. B. reet.
N.W.T.—The i Presbyterian id a new edi- pastor.
T.—J. W. H. i, is preparing church to be 5,500.
ONT.—Byron build on Vic- e will be built Buckley.
L. Reaume, e McIvor pro- ll build a saw g factory.
— John Galt, ig surveys for e, and expects ugust 1st.
— Plans for a emorial church W. H. Watts, k, cost \$5,000. ouncil will sub- ayers to raise complete the id waterworks
William Irwin, s, will receive r supplying a construction of
ER, ONT.—A. clerk, will re- inst. for con- er Sutherland's
J. — John Mc- residence on W. Hilliard, Roche will each
-The congrega- enue Methodist ie plans for new and tenders will
-A. F. Vincent t. for building of water mains on a streets. Plans al.
F.—It is reported decided to move

his mill from Kingston Mills to this point. He purposes developing 200 horse power of electric energy.

SHELLMOUTH, MAN.—The ratepayers defeated a by-law to raise \$20,000 to build three bridges over the Assiniboine river.—Shell River council will likely build a new bridge at this place.

CAMPBELLFORD ONT. — J. G. Mathieson, Secretary Board of Education, desires tenders by 7th inst. for steam heating, ventilation and plumbing in high and public schools in this town.

BRANDON, MAN.—Tenders for supply of a large quantity of cast-iron pipe, specials, valves, hydrants and pig-lead for water works purposes will be received by J. D. Whitehead up to 21st inst.

KINGSTON, ONT.—William Newlands, architect, has taken tenders on excavation and masonry work required in construction of a foundation for a mill building for the Frontenac Cereal Company.

PORT COLBORNE, ONT.—James Jamieson, of Montreal, is said to have been commissioned by the Dominion Government to prepare plans for an elevator at this place to cost about \$1,250,000.

FREDERICTON, N.B.—The Provincial Government are considering plans submitted by the Ferro-Manganese Company for the development of the water power at Grand Falls for manufacturing purposes.

GALT, ONT.—The ratepayers of North Dumfries have approved of a by-law to raise \$10,000 to construct a steel bridge across the Grand river.—The C.P.R. will probably widen the subway at Bond street.

CALGARY, N.W.T.—By-laws were carried here on June 28th to provide funds for two new fire halls and fire apparatus, and to build a bridge across the Elbow river. The by-law to build a new city hall was defeated.

VICTORIA, B.C.—The city intends to construct a number of concrete sidewalks, notice of which is now being given.—It is expected that an early commencement of work will be made on the C.P.R. hotel building.

FERNIE, B.C.—The Fernie Lumber Company purpose building a logging railway four miles long, cost \$24,000.—The Crow's Nest Pass Coal Company are about to build fifty more double houses for their workmen.

OWEN SOUND, ONT.—It is expected that steps will be taken at an early date to build a new library with the money offered by Andrew Carnegie.—John Todd, of Collingwood, will probably build a box factory here.

PILOT MOUND, MAN.—Rev. E. F. Stedman will receive tenders up to July 20th for erection of a four-roomed brick school. Plans by J. H. G. Russell, architect, Winnipeg.—Dow & Curry are planning extensions to their oatmeal mill.

ORILLIA, ONT.—The town council have finally decided upon the plan of improving and rebuilding the dam at the power plant at Ragged Rapids. The work will be done by day labor, under the superintendence of D. C. Clark, of Trenton, and will cost about \$28,000.

LONDON, ONT.—Matthews & Murray, architects, are preparing plans for a residence for E. R. Dennis, also for alterations and additions to a double house for C. R. Somerville.—The Grand Trunk Railway Company will probably construct subways on Richmond and Clarence streets.

BRANTFORD, ONT.—C.P. Raikes, Canadian representative of Harper Bros. & Company, London, England, recently went over the proposed route of the Brantford and Erie Electric Railway, and it is understood will report favorably to his firm. It appears, therefore, that the work will be undertaken at an early date.

OTTAWA, ONT.—The Dominion Government is in the market for an ice crusher for use in the St. Lawrence river. The plan is for a steamer 200 feet long, 43 foot beam.—The Railway Committee of the Dominion Government have extended for five years the time for the construction of the Similkameen and Keremeos railway in British Columbia.

GUELPH, ONT.—The addition to be built to the Homewood Sanitarium, on which tenders have been taken, will probably be of Guelph limestone, two stories, 240x40 feet, cost \$7,000.—It is stated that C. P. R. engineers have been taking levels for the purpose of preparing plans for an overhead bridge at Eramosa road.

REGINA, N.W.T.—J. K. Hunter, secretary-treasurer, desires bids by July 30th for the purchase of \$135,000 4½ per cent. debentures, issued for the construction of waterworks and sewerage systems.—The ratepayers have granted a free site and exemption from taxation to the Western Manufacturing Company, of Indian Head, which propose to establish a factory here.

CHATHAM, ONT.—W. G. McGeorge, C. E., has been instructed by Harwich Township Council to prepare plans for bridges over McGregor creek and McCargon drain.—Thomas Scane, C. E., has reported to Howard Township Council that it will cost \$1,794 to improve and extend the McCargon drain.

TORONTO JUNCTION, ONT.—Bond & Smith, architects, Toronto, have

prepared plans for a new police station to be built on Keele street, cost \$5,000.—Joseph Barrett, representing the Credit Development Company, has asked for permission to erect poles and string wires in town for the distribution of electric power.

ST. CATHARINES, ONT.—W. B. Allan, architect, has prepared plans for an isolation hospital, and efforts will be made to secure funds to build it.—The St. Catharines, Pelham & Welland Electric Railway Company will apply to the Ontario Legislature for power to extend their line through the townships of Pelham, Wainfleet and Moilton to the town of Durnville.

ST. JOHN, N. B.—Thomas W. Morrison has purchased a site on Main street, Fairville, on which he will build a large grocery store and warehouse.—The Royal Arcanum are considering the building of a new club house.—W. M. Mitchell, architect, has just taken tenders on erection of a new building on Mill street for E. I. Hiette.—F. Sandall will receive bids, on behalf of the city, for purchase of \$113,500 3½ per cent. debentures.

STRATFORD, ONT.—Perth county council are considering the erection of a new registry office.—The enlargement of the G. T. R. locomotive shops in this city will cost upwards of \$100,000. The boiler shop will be 169x120 feet, tender shop 326x102 feet, carpenter shop, 100x63 feet and brass foundry 75x40 feet. All the buildings will be constructed on modern lines, the frame work of steel, the foundations of cement, and the superstructure of solid brick. Contracts have not yet been awarded.—The Stratford Carriage Company will commence building operations at an early date. The main building will be 150x60 feet and four stories high.

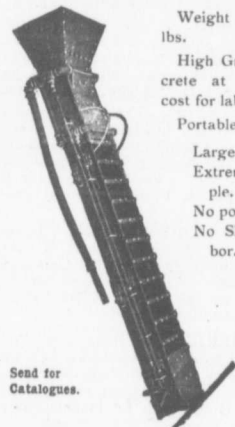
HAMILTON, ONT.—The Hamilton Radial Electric Railway Company are taking tenders up to 15th inst. for the Oakville extension, including grading, fencing, bridges, etc.—The Eastern Building Company will commence work at once on the building of fifty-eight houses on Case, Clinton and Ruth streets.—The following building permits have been granted: Thomas Allan, residence on Queen street, between Markland and Herkimer streets, cost \$2,000; Mrs. Walker, residence on Victoria avenue, cost \$2,000; George H. Williams, residence on Baillie street, cost \$1,200; George H. Milne, residence on George street for A. M. Souter, cost \$2,800. R. M. & J. Poag, six houses on Grant avenue, cost \$9,000; H. Hammill, brick dwelling and stable on Catherine street, cost \$2,800.

VANCOUVER, B. C.—J. J. Banfield has sold two lots on Granville street to N. Desrosiere for building purposes.—E. R. Bowering will build a three-storey brick and stone building on the north-east corner of Hastings street and Westminster avenue, the plans for which have been prepared by W. T.

Whiteway.—Mr. Irwin has purchased, through W. A. Clark & Company, a site on corner of Pacific and Thurlow streets on which he will build a fine dwelling.—A block pavement will be constructed on Pender street, from Granville to Burrard.—A by-law will likely be submitted to the ratepayers to borrow \$50,000 for the improvement of English Bay.—A Chinese syndicate headed by Tai Sing & Company have purchased a lot on Pender street on which a three-storey brick and stone building will be built.—A permit has been granted for the new Presbyterian church at Mount Pleasant.

MONTREAL, QUE.—J. R. Barlow, City Surveyor, is asking for tenders up to the 14th inst. for construction of a main sewer for St Denis ward, from the Back river to a point about 3,000 feet south.—The directors of the Locomotive & Machine Company of Montreal have authorized the expenditure of \$300,000 for the purchase of new tools, equipment, etc., and the enlargement of their building.—The present lease of the Theatre Royal terminates next May, when rebuilding on an extensive scale will be commenced. It is understood that the plans have already been prepared.—The C. P. R. have decided to establish a yard in Westmount, where a twenty-stall round house will be built.—Building permits have been granted as follows:

THE PORTABLE GRAVITY CONCRETE MIXER



Weight about 500 lbs.

High Grade Concrete at very low cost for labor.

Portable.

Large capacity. Extremely Simple.

No power used. No Skilled Labor.

Continuous in action.

Send for Catalogues.

Other Mixers and Concrete Mixing Machinery

E. F. Dartnell, Montreal

PORTLAND CEMENT, HYDRAULIC LIME, CHINA CLAY
E. FREEMAN, 20 Bucklersbury, LONDON, ENG.



Sole Agent for U.K. and Colonies for Oldest Continental Works



Supplying to Contracts on the Principal Railways, Large Sewage and Sea Defence Works, etc., in England. Will be Pleased to Quote to the Wholesale Trade Only.

CORRESPONDENCE INVITED FOR CONTROL OF BRANDS

The Starke brick and s King st, c three storey Chambord two-storey del Lane, c three storey stores, corn streets, cos one storey Davidson a A. Ray & B. brick dwel \$3,000; A wood and t street, cost storey wood board stree improve stone dwell St. Cathari & Adair Co storey wood Ann and W

WINNI Company, for a site in large depar that they h age avenu ham and H open to con a water to directors of Coffee Hou ceed with ti plans are Company warehouse contracts will business bl avenue by J front will stone and p will be divid second and facturing a Council ha tion in col Asphalt pa Alexander t Dunsmuir avenue, fr street, cost from Port: \$9,670; I Granville s street, cost

JOHN Mem

CONSI Dams, M Room 20 King To

J. A. L. WAD Mem. Can. Mem. Inst. Mem. Am.

Wac Consulti

Canadian Her Manning Montreal

THE DE ENGINE

MANNIN CONSULTIN ELE

purchased, pany, a site rlow streets dwelling.— instructed on :to Burrard. ublished to 0,000 for the —A Chinese ing & Com- on Pender y brick and —A permit new Presby- sant.

R. Barlow r tenders up ction of a rd, from the it 3,000 feet e Locomotive Montreal have of \$500,000 s, equipment, if their build- the Theatre ay, when re- scale will be onded that the epared.—The establish a yard twenty-stall uilt. — Build- dited as follows:

The Starke Cooperage Co., three storey brick and stone dwelling and warehouse, King st., cost \$4,200; Proulx & Damien, three storey wood and brick dwelling, Chambord st., cost \$2,000; Geo. Monette, two-storey wood and brick dwelling, Trudel Lane, cost \$18,000; L. St. Martin, two-storey wood and brick dwelling, Harmony st., cost \$2,000; Merchant's Bank, three storey brick and stone dwelling and stores, corner St. Catherine and Fullum streets, cost \$25,000; Bank of Montreal, one storey brick and stone dwelling, Davidson and Nolan streets, cost \$17,000; A. Ray & Co., three storey wood and brick dwelling, Montana street, cost \$3,000; Aug. Jean, pair three storey wood and brick dwellings, St. Timothee street, cost \$4,000; Wilfred Larose, two-storey wood and brick dwelling, Cham- board street, cost \$1,200; Grey Nuns, improvements to two-storey brick and stone dwellings and stores, St James and St. Catherine streets, cost \$4,000; Hart & Adair Coal Co., improvements to one storey wood and brick dwelling and shed, Ann and Wellington streets, cost \$3,000.

WINNIPEG, MAN.—The T. Eaton Company, of Toronto, are negotiating for a site in this city on which to build a large departmental store. It is reported that they have bought the block on Portage avenue bounded by Donald, Graham and Hargrave streets.—The city is open to consider offers for the supply of a water tower, fire ladders, etc.—The directors of the Winnipeg Lodging and Coffee House Association intend to proceed with their new building as soon as plans are completed.—The J. I. Case Company will erect a large implement warehouse on Higgins street east.—Contracts will be awarded this week for large business block to be built on Portage avenue by N. Fortune & Company. The front will be of St. Louis red brick, stone and plate glass. The ground floor will be divided into four stores, and the second and third floors utilized for manufacturing and office purposes. — The Council have given notice of their intention to construct the following works: Asphalt pavements, Lizzie street, from Alexander to Logan avenue, cost \$2,500; Dunsuir street, cost \$2,011; Elice avenue, from Vaughan to Maryland street, cost \$18,704; Langside street, from Portage to Elice avenue, cost \$9,670; Lusted street, cost \$6,438; Granville street, cost \$6,797; Magnus street, cost \$9,987; sewers on McKen-

zie street, cost \$3,205; Arlington street, cost \$8,586; Alverstone street, cost \$3,680; Dufferin avenue, cost \$4,945; Salter street, cost \$1,760; also a number of granolithic walks.—R. J. Whittle intends building a handsome residence on Broadway.—W. B. Lait, architect, is taking tenders up to 9th inst. for erection of a four-storey brick and stone business block, 92 x 65 feet.—F. J. C. Cox wants tenders by 7th inst. for putting stone basement under St. John's school-house, and for other improvements to the building.

TORONTO, ONT. — Sir William Meredith has purchased a lot 100 x 600 feet on Binscarth road, on which he will erect a handsome residence. Orlando Heron has purchased a building site on north side of the same street.—East & Company, 300 Yonge street, will shortly commence the erection of a large addition to their present store and factory.—Plans of steam heating, ventilation and plumbing in the public and high schools at Campbellford, Ont., may be seen at the office of the John Ritchie Heating & Plumbing Company in this city. Tenders close July 7th.—F. H. Herbert, architect, 9 Toronto street, is taking tenders on excavating, brickwork, concreting and carpenter work required in remodeling two large residences on Sherbourne street.—The Consumers' Gas Company are negotiating for a site containing 33 acres of land on Eastern avenue for the purpose of accommodating a duplicate plant to be constructed next spring.—The Council intend to construct asphalt pavements on Baldwin street, from McCaul street to Spadina avenue, cost \$11,333; on Mowat ave., cost \$3,626; and on Brock ave., from Queen street to 1,163 feet north, cost \$8,778.—Darling & Fearson, architects, are taking tenders up to 13th inst. for the erection of a bank building at Ayr, Ont., for the Canadian Bank of Commerce.—The York County Loan & Savings Co. are said to be preparing the site for a large departmental store to be built at the corner of Wright and Roncesvalles avenue. Opposite the proposed store will be erected an apartment house.—A start will be made after the summer holidays with the building of the new school on the site recently acquired by the Board of Education on Broadview avenue.—The City Engineer has recommended the paving of the Esplanade, from Scott to Berkeley streets, with stone blocks, at a cost of \$60,650, also the fol-

lowing local improvements: Tar macadam roadway, Dumach street, King street to Eastern ave., \$2,394; Defoe street, McDonnell square to Niagara street, \$4,103. Macadam roadway, Scarth road, from Crescent road to Roxborough street, \$1,438; Parkview ave., Wellesley to a point: 175 feet north, \$743; Wellington ave., south side, Niagara to a point 68 feet west, \$112; Manning ave., west side, Bloor to north end, \$4,240; Delaware ave., west side, College to Hep- bourne, \$2,987; McMurrich street, both sides, Davenport road to Belmont street, \$1,349; Beverley street, College to Cecil, \$719; Baldwin street, south side, Huron street to Spadina ave., \$492; Terault street, west side, Albert to Walton, \$2,023; Bellevue place, north side, \$539; Gerrard street, south side, Parliament to Berkeley, \$58; St. Patrick street, north side, Denison to Casimir, \$62; Bathurst street, east side, Niagara to Well- ington, \$48; Wilton ave., south side, Ontario to Seaton, \$279; Sackville street, west side, Queen to Eastern ave., \$1,599; Brunswick ave., east side, 6 feet, Ulster to Harbord, \$737; Front street, south side, Cherry to Vine, \$1,178; Earn- bridge, both sides, Brock ave. to a point 300 feet east, \$514; Maple ave., east side, from Dale ave. northerly, thence westerly 440 feet, \$533; Maple ave., north side, Glen road to a point 175 feet west, \$271; Heward ave., west side, Eastern ave. to Queen street, \$1,357.— Building permits have been granted as follows: J. M. Davidson, 2 1-2 storey brick and stone dwelling, Roxborough street near Cluny ave., cost \$4,100; Charles Turp, two-storey brick and roughcast dwelling, Symington ave., near Royce, cost \$1,000; W. N. McEachren, two-storey brick dwelling, Ossington ave., near Dewson, cost \$2,800; J. S. Van Camp & Son, pair two-storey dwellings, cement blocks, on Langley ave., cost \$2,600; John J. Main, two-storey and attic brick dwelling, cor. Prince Arthur and Bedford road, cost \$8,500; William Webster, pair brick dwellings, east side Euclid ave., near London, \$4,000; Mr.

The Best Sand to withstand Fire is the Sand that is all Sand, namely, Water Washed Sand.

It is the Best. It is the Cheapest.

SAND & DREDGING, Limited
Tel. M. 4507 John Street Dock, TORONTO

JOHN S. FIELDING
Mem. Soc. C. E. West Penn. '87.

CONSULTING ENGINEER.
Dams, Mills, Bridges, Machinery.
Room 41, National Trust Building,
20 King Street East, TORONTO, ONT.
Telephone Main 3488.

J. A. L. WADDELL, IRA G. HEDRICK.
Mem. Can. Soc. C. E. Mem. Can. Soc. C. E.
Mem. Inst. C. E. Mem. Inst. C. E.
Mem. Am. Soc. C. E. Mem. Am. Soc. C. E.

Waddell & Hedrick
Consulting Bridge Engineers
KANSAS CITY, MO.

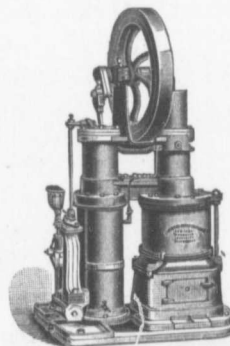
Canadian Head Office:
Manning Chambers, TORONTO, ONT.
Montreal Office: 185 St. James Street.

THE DELANO-OSBORN
ENGINEERING CO., LIMITED
MANNING CHAMBERS TORONTO
CONSULTING, CIVIL, MECHANICAL AND
ELECTRICAL ENGINEERS.

PALMERSTON BOULEVARDE, Toronto

Is to be paved with the Bitulithic pavement.
It has been laid in London, Chatham, Montreal and Glace Bay and contracts have been awarded to us for 16,000 sq. yds. in Walkerville, Ont. also for the Driveways around the Dominion Parliament Buildings in Ottawa. Write for particulars and estimates to

The Warren Bituminous Paving Co., Limited
Head Office: 164 Bay Street, TORONTO.



GENERAL PUMPING CONTRACTORS For All Kinds of Waterworks

—AGENTS FOR—

BLAKE STEAM PUMPS

Boiler Feeding, Tanks, Underwriters, etc.
Also Stoves, Gas and Gasoline Engines

RIDER ERICSSON HOT AIR PUMPS

For Schools, Convents, Hotels, Club Houses, Farms,
Country Residences, etc. Water Tanks of all sizes.
Towers from 20 to 100 feet high, erected with
Tanks complete.

R. H. BUCHANAN & CO.
692 CRAIG ST., MONTREAL

GRAVITY MIXER

light about 500
gh Grade Con- at very low for labor.
rtable.
large capacity.
Extremely Sim- ple.
No power used.
No Skilled La- bor.

Contin- uous in action.

d Concrete hinery

rtnell, eal

A CLAY IG.



Works, etc., in

Chisholm, pair two-storey stone and brick dwellings, 157 and 159 Montrose ave., cost \$4,000; Walter H. Williams, two pair 2 1-2 storey brick dwellings, stone foundations, near Park road on Bismark ave., cost \$9,000; Wm. L. Marshall, pair two-storey and mansard brick dwellings, 23 and 25 Delaware ave., cost \$3,700; Mrs. M. McClelland, 2 1-2 storey brick and concrete dwelling, 149 Arthur street, cost \$2,800; Mrs. Edith R. Gardner, pair three-storey brick dwellings, concrete foundations, 63 and 65 McCaul street, cost \$6,000; Dominion Bank, two-storey brick and stone bank, corner Yonge and Cottingham streets, cost \$30,000; P. McIntosh & Son, five-storey grain elevator, wood and galvanized steel roofing, Cottingham street, cost \$6,500; T. W. Murray, 2 1-2 storey brick and stone dwelling, Jameson ave., near Leopold, cost \$5,750; G. Davidson, two-storey and attic brick dwelling, 110 Walmer road, cost \$5,500; T. W. Murray, 1 1-2 storey stone and brick dwelling, Spencer ave., near King street, cost \$5,500; Pure Gold Manufacturing Co., two-storey brick factory, 381 College street, cost \$25,000; J. B. LeRoy & Co., 2 pair two-storey rough-cast dwellings, brick fronts, west side Broadview ave., near Gerrard, cost \$4,400; Richard Reed, 8 two-storey dwellings, concrete foundations, brick fronts, Jones ave., near Gerrard, cost \$6,000; Mrs. E. P. Roden, pair two-storey brick dwellings, Ulster street, near Euclid ave., cost \$4,500.

CONTRACTS AWARDED.

STRATFORD, ONT.—New Factory for Stratford Chair Co.: J. L. Youngs, contractor.

LEAMINGTON, ONT.—Residence for Duncan McDonald: Henry Foster, contractor.

WOODSLEE, ONT.—Stone and brick work of Methodist church: Park Bros., sub-contractors.

WINGHAM, ONT.—New post-office: S. S. Cooper, of Clinton, successful tenderer, \$15,000.

ST. JEAN, MAN.—Three storey hotel for Joseph Pellissier: Bluff, Marion & Co., contractors.

PAISLEY, ONT.—New bridge at Stark's: Abutments, Keyes Bros., of Kincardine, \$912.

LIVERPOOL, N.S.—New hotel: Boehner Bros., West Lahave, contractors, cost about \$15,000.

MARYSVILLE, N. B.—Bridge at Germantown: Whitman Brewer, of this place, successful tenderer.

RIPLEY, ONT.—Six thousand feet of concrete sidewalk: Charles Barber, Wingham, successful tenderer.

DURHAM, ONT.—Granolithic sidewalks: Toronto Contracting & Paving Company, successful tenderers.

LONDON, ONT.—New dairy building for Western Fair: R. J. Wilson, successful tenderer; pressed brick, cost \$7,500.

PRESCOTT, ONT.—Heating and ventilating Separate school building: James Smart Mfg. Co., Brockville, successful tenderers.

HALIFAX, N.S.—New pier: Reid & Archibald, contractors.—Dormitory and infectious hospital: Freeman Bros., contractors.

VANCOUVER, B. C.—Gravity ore tram line from Britannia Landing, Howe (Continued on page 12.)

McGREGOR & McINTYRE, LIMITED

67 to 91 Pearl Street, Toronto, Ont.

STRUCTURAL IRON WORKS

Fire Escapes, Library Racks, Sidewalk Door, Jail Cells, Iron Stairs, Railings, Etc Etc.

WRITE FOR ESTIMATES.

Dominion Bridge Co., Ltd.

P. O. Address, MONTREAL, P.Q.
Works at LACHINE LOCKS, P.Q.

STEEL BRIDGES

For Railways and Highways
Piers, Trestles, Water Towers
Tanks, Buildings, Roofs, Girders,
Beams and Columns

Toronto Agent: GEO. E. EVANS,
38 Canada Life Bldg., TORONTO, ONT

THE Canadian Casualty and Boiler Insurance Co.

Head Office: N.E. Cor. Adelaide and Victoria Streets, TORONTO.

The Steam Boilers of Civic and Municipal Steam Plants, and Corporation and Public Works, Power and Electric Light Plants regularly inspected.

A STEAM BOILER POLICY

In the Canadian Casualty and Boiler Insurance Company, includes the services of Consulting Engineers free of cost. Write for book to Steam Users.

ALEXANDER SUTHERLAND, D.D., President.
H. N. BATE W. S. DINWICK, Vice-Presidents.

A. G. C. DINWICK, Managing Director
A. M. WICKENS, Chief Engineer

LARGEST GLAZED VITRIFIED SEWER PIPE and FITTINGS



HIGH-GRADE
FIRE BRICK & FIRE CLAY
WHOLESALE ONLY

Sewer Pipe Factories at

Mimico, Hamilton, St. Johns, Que., and New Glasgow, N. S.

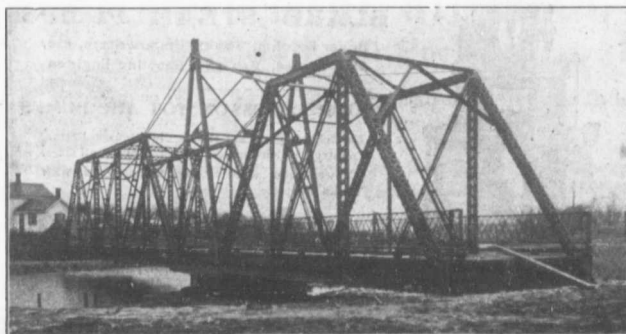
Shipments will be made from nearest factory or freight equalized.
Ask for Discounts and Prices. Address

TORONTO POTTERY CO., Toronto, Ont.

Telephone North 1787

The Hamilton Bridge Works Company, Limited

HAMILTON, CANADA



GENERAL STEEL CONTRACTORS

HIGHWAY BRIDGES A SPECIALTY

Large Stock I BEAMS, CHANNELS, ANGLES and PLATES always on hand

Established 1898.
The Hanover Portland Cement Co., Ltd
 Hanover, Ontario.
 Manufacturers of the Celebrated
"SAUCEEN" Brand of PORTLAND CEMENT
 Prices on application.

Paving Granite

Granite Sets for Street Paving.—CURBING cut to any shape ordered.—Fine Rich Colors for Building and Monumental Purposes.
 Quarries, St. Philippe d'Argenteuil, P.Q.

Address all communications to

JOS. BRUNET - COTE DES MANGES, MONTREAL

TUNNEL CITY BRIDGE & IRON WORKS

Steel Bridges and Structural Work.
 Works: Port Huron, Mich., and Sarnia, Ont.

HIGHWAY BRIDGES

Roofs, Steel Buildings and Structural Iron Work of all Descriptions.

ARTIFICIAL STONE PAVEMENTS

SIDEWALKS A SPECIALTY
 CORPORATIONS Will do well to consider our work and prices before letting contracts
The Silica Baritic Stone Company of Ontario, Limited.

WALTER MILLS General Manager. Read Office: **INGERSOLL, ONT.**

Road Machinery
 Fire Appliances
 Contractor's Plant
 Stone Crushers, all sizes
 Steam Road Rollers
 Road Graders
 Steam and Gasoline Fire Engines, Etc.

T. A. MORRISON & CO.
9 Mechanics' Bldg. MONTREAL

M. BEATTY & SONS
WELLAND, ONT.

Dredges, Ditchers, Derricks and Steam Shovels
 of various styles and sizes to suit any work.

Submarine Rock Drilling Machinery, Hoisting Engines, Suspension Cableways, Horse-Power Hoisters, Gang Stone Saws, Centrifugal Pumps for Water, Sand and Gold Mining, and other Contractors' Plant.

PORTLAND CEMENT

SAMSON BRAND MAGNET BRAND

MANUFACTURED BY

THE OWEN SOUND PORTLAND CEMENT COMPANY, Limited, Owen Sound, Ont.
 Works at SHALLOW LAKE, ONT. Write us for prices

THE CANADIAN PORTLAND CEMENT COMPANY, LIMITED

Manufacture "RATHBUN'S STAR" Brand

The Leading Canadian Portland Cement.

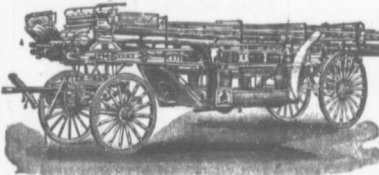
Capacity of Works : 500,000 Barrels Per Year.

SALES AGENTS

The RATHBUN CO. St. Lawrence Portland Cement Co.
 310-312 Front Street West, TORONTO, ONT. 202-203 Board of Trade Building, MONTREAL.

LIGHTNESS, STRENGTH AND ECONOMY

Seagrave Patent Trussed Ladders, Trussed Aerial, City Service and Village Hook and Ladder Trucks, Combination Hook and Ladder Trucks and Chemical Engines, Trussed Trucks and Hand Pumps, Combination Hose Wagons and Chemical Engines, Hose Wagons, Combination Hook and Ladder Trucks and Hose Wagons, Chemical Engines, Fire Extinguishers, Hose Reels, Patrol Wagons, Ambulances, Specialty Wagons, Patent Sleigh Runners, and other Modern Fire Fighting Tools.

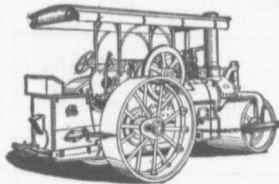


Prompt attention given all inquiries. All goods built to order.

Long Distance Phones 686 and 684 **W. E. SEAGRAVE,** WALKERVILLE ONT.

"WATEROUS"

ROAD MACHINERY AND FIRE APPARATUS



FIRE ENGINES in five sizes, with a full line of fire-fighting goods

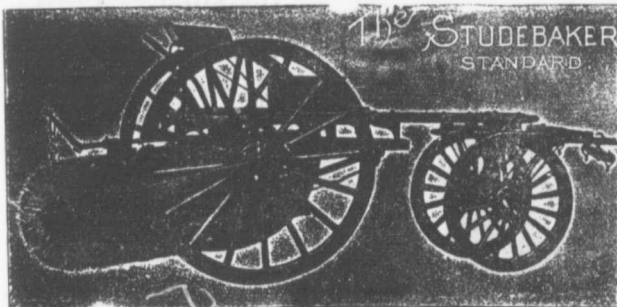
We Rebuild other makes of Fire Engines with our patent Boiler.

BRANTFORD PITTS DOUBLE ENGINE STEAM ROAD ROLLER

IN THREE SIZES—10, 12 and 16 ton.

CORRESPONDENCE SOLICITED.

HUGH CAMERON & CO., Selling Agents, Manning Chambers, TORONTO



Studebaker Sprinkler
(PATENT IMPROVED.)

Does not clog or get out of order. Greatest width of spray Can be graded from driver's seat to any volume. We also make an . . .

IMPROVED VERTICAL SPRAY

for Pavements.

Geo. Heaman, Mnfr., London, Ont.

Stackpole Patent Improved Street Sweeping Machine

Is the Standard of Perfection

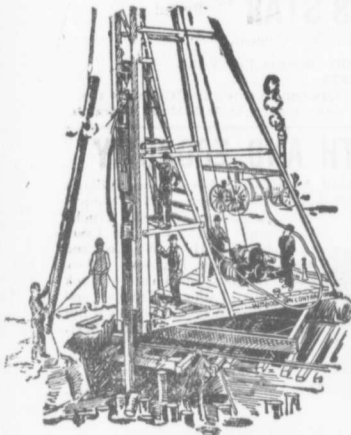
Because no sweeper so effectually does the work for which it is designed as "The Studebaker." It Sweeps Clean. No sweeper is constructed with the same degree of care and mechanical precision. It Wears Well. "The Studebaker" has the smallest number of working parts, and has less gearing than any other sweeper made. It is free from all unnecessary complications. With reasonable care it does not get out of order. Send for complete descriptive catalogue

The Canadian Bridge Co., Limited

WALKERVILLE, ONT.

MANUFACTURERS OF RAILWAY AND HIGHWAY BRIDGES

Locomotive Turn Tables,
Roofs, Steel Buildings and
Structural Iron Work of all descriptions



PILE DRIVING

on land or water by Steam Pile Drivers or Drop Hammers.

**Portable Boilers
Hoisting Engines
Pumping Machinery**

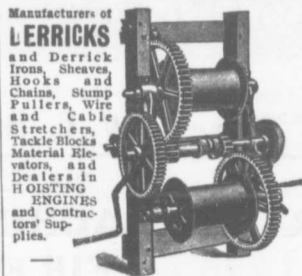
TO LET

Bridge Building, Trestle Work, Wharves,
Dams, Diving Submarine Work and
General Contracting.

WM. HOOD & SON
10 Richmond Sq. - MONTREAL

Wears Like Iron
MANGANESE
Anti-Friction
Babbitt Metal
Syracuse Smelting Works, Montreal.

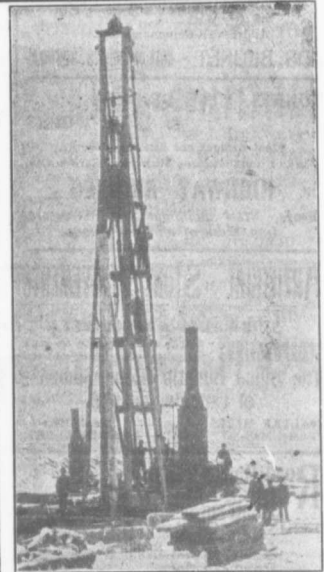
Notice to Contractors.
The Niagara Falls Machine & Foundry Co., Limited,
Niagara Falls, Ont.,
are making a speciality of improved
HOISTING AND BUILDING ENGINES.
Write for Prices.



Manufacturers of
LERRICKS
and Derrick
Irons, Sheaves,
Hooks and
Chains, Stump
Pullers, Wire
and Cable
Stretchers,
Tackle Blocks,
Material Elevators,
and
Dealers in
HOISTING
ENGINES
and Contractors' Supplies.

National Hoist & Machine Co.
463 West 22nd Street, Chicago

If you want to reach Municipalities advertise in the
CONTRACT RECORD.



PILE DRIVING

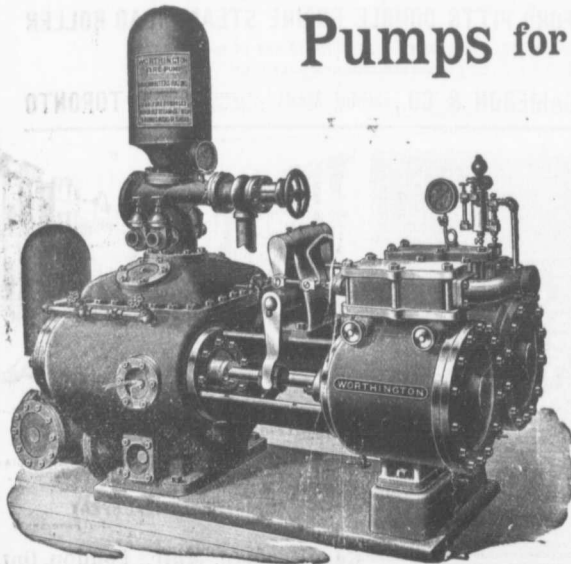
and Foundation Work.

By 5-ton Automatic Steam Pile Hammer,
Water Jet or Drop Hammers, Dock Building,
Submarine Work and Dredging.

BUILDING MOVER AND WRECKER
General Contracting.

JNO. E. RUSSELL, - Toronto
908 Queen St. E. - Phone M. 2007.

Pumps for Waterworks



**Waterworks Systems
Installed**

*Steam, Hydraulic, Electric,
Gasoline, Air Lift and
Automatic Rams.*

**Steam Boilers and
Filters**

Write for Prices and Particulars

The John McDougall

CALEDONIAN IRON WORKS CO., LIMITED
MONTREAL, P.Q.

DEBENTURES

Municipalities contemplating the issue of Debentures will find it to their advantage to communicate with

G. A. STIMSON & CO.

Investment Dealers
24 and 26 King St. W. TORONTO

THE GREY AND BRUCE PORTLAND CEMENT COMPANY

of Shallow Lake, Limited.

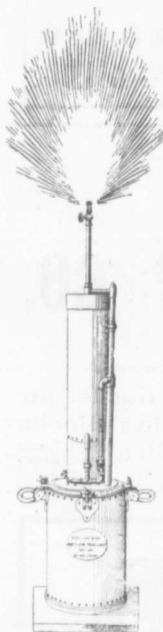
Manufacturers of

BRAND OF
"HERCULES" PORTLAND CEMENT

Very finely ground Unsurpassed for Sidewalks, Floors and all work requiring the Highest Grade of Portland Cement. For prices address.

A. D. CREASOR, Sec'y-Treas.
Head Office, Owen Sound, Ont.

Please mention this paper when corresponding with advertisers.



THE BEST LIGHT
For Contractors,
Railways, Mines,
Steamboat Lines,
Etc.

Is the
**HOLLAND
PORTABLE
LIGHT**

Cheaper to operate and cheaper to buy than any other gives 300 candle-power of light and costs less than 3 cents an hour to operate. Suitable for any cut-of-door work in any weather. Delivered at any railroad station in Canada for \$42.00.

HOLLAND
PORTABLE
LIGHT WORKS
17-19 Bushy Lane,
Montreal, P. Q.
Phone Main 2399.
P. O. Box No. 229

THE PHOENIX BRIDGE & IRON WORKS, LIMITED
MONTREAL
GENERAL STEEL CONTRACTORS

Large Stock I BEAMS, CHANNELS, ANGLES, TEES, ZEEES and PLATES always on hand.

THE LAKEFIELD PORTLAND CEMENT CO., LIMITED
Manufacturers and Sales Agents of
MONARCH BRAND PORTLAND CEMENT

One grade only—Straight Portland. Unexcelled for Strength, Color and Uniformity.
The Recognized Standard Canadian Brand
Used by the Dominion Government, large Corporations and leading Contractors throughout Canada. Phone, wire or write for prices to

THE LAKEFIELD PORTLAND CEMENT CO. Limited, Lakefield, Ont.
Long distance phone No. 29.



The Highest Grade of American
Portland Cement is **"Iron Clad"**

It is the most finely ground (97 per cent. passing No. 100 sieve) and most uniform, having a **Ten Years' Record**. Used on some of the most important work in Canada and U. S. A.

Prices on application to all dealers, or to
The Glens Falls Portland Cement Co.,
224 Board of Trade, MONTREAL, P. Q.
W. A. COOK, Agent

PORTLAND CEMENT
T. M. Morgan



Manufactures the

CRESCENT AND DIAMOND BRANDS



AS GOOD AS THE BEST FOR ANY PURPOSE!

Office and Works: Longue Point, MONTREAL, QUE.
Long Distance Phone E. 436 Ring 2.



"Lehigh"
Portland Cement

Capacity 11,000 Barrels every Day in the Year.

For Sidewalks and all other work requiring the highest quality Portland Cement Used by the U. S. Government and the largest contractors and users of Portland Cements in the United States.

Absolutely the most popular Cement in Canada on account of its merits.

For Prices, etc., address

THORN CEMENT CO. - Buffalo, N. Y.

The Locomotive and Machine Company
OF MONTREAL, LIMITED

NEW YORK OFFICE:
25 BROAD STREET
N. Y.

Structural Steel

WORKS:
LONG POINT
MONTREAL

FOR ALL PURPOSES

Principal Office: Imperial Bank Building. MONTREAL

BUSINESS NOTES.

The Canadian Bridge Company, Limited, have registered their business in Montreal.

J. E. Farrel has succeeded to the plumbing business of Farrel & Gallagher, Sault Ste Marie, Ont.

The Montreal Fire Extinguisher Company has been incorporated, with headquarters in Montreal.

New contractors in Fort William, Ont., this year include Rochon, LeBrun & Co., general contractors; Russell Bros., car-

penters; R. Blair, mason; Street Bros., bricklayers.

The Fort William Brick & Tile Company and the Mount McKay Brick & Tile Company, Fort William, Ont., are experiencing a brisk demand for their products.

THE CANADIAN INSPECTION COMPANY, LIMITED

Main Office and Laboratories:

146 St. James Street, MONTREAL

SPECIALTIES: Inspection of RAILS and all material for BRIDGES, BUILDINGS, and other structures, cast iron pipe, wood and steel railroad cars.

MANUFACTURE AND ERECTION.

Expert examination and reports, chemical analyses and physical tests of all kinds. Cement Testing.

FIREMEN'S LADDERS

—AND—

LADDER TRUCKS

We make the lightest, quickest, strongest and cheapest. Every Town and Village needs them and can afford them. They will save 50 times their price in insurance premiums. Write for circulars and quotations.

THE WAGGONER LADDER CO., Limited
LONDON - - - - - ONT.

PORTLAND CEMENT

SEWER PIPES

FIRE BRICKS

FIRE CLAY

ALEX. BREMNER

50 Bleury Street, MONTREAL



PROGRESSIVE TOWNS

Use Guaranty Bonds on Officials

We make a speciality of guaranteeing Municipal Officers.

Write Us.

The United States Fidelity & Guaranty Co.

KIRKPATRICK & KENNARD, Mgrs. for Canada.
6 COLBORNE STREET, TORONTO, ONT.

Fire Clay Products

THE GLENYARDS FIRE CLAY CO.

BONNYBRIDGE, SCOTLAND.


Cablegrams: Glenyards, Bonnybridge.

Codes used, A.B.C. and Glenyards.

Manufacturers of all kinds of **Fire Clay Goods, Ganister and Silica Goods, for Iron and Steel Works and Gas Works, including Boiler Seating Blocks and Covers of all sizes. Ground Fire Clay, Ganister and Silica.** in all kinds of Packages


THE STANDARD IN ALL COUNTRIES

Where Cement is Known.



ALSEN

"THE ABSOLUTELY SAFE CEMENT"
45 BROADWAY, NEW YORK



Yearly Capacity Over Two Million Barrels

WILLIS CHIPMAN

Hon. Grad. McGill University.
M. Can. Soc. C. E. M. Am. Soc. C. E.
Mem. Am. W. W. Ass'n.
**WATERWORKS, SEWERAGE WORKS, GAS
WORKS, ELECTRIC LIGHT AND
POWER PLANTS**
Reports, Surveys, Construction, Valuations
103 BAY STREET - TORONTO

R. E. SPEAKMAN, C.E.

A. M. Inst. C. E., 1878.
CONSULTING ENGINEER
Waterworks, Sewerage and Sewage Disposal.
Municipal Improvements.
Granolithic Pavements.
Electric Light Plants.
Drainage and Irrigation of Land.
Coal Handling Plant and Machinery.
Plans, Specifications and Estimates.
Construction and Valuations.

Canada Life Building - TORONTO

WM. H. BREITHAUP, C.E.

M. A. M. Soc. C. E. M. CAN. SOC. C. E.
CONSULTING STRUCTURAL ENGINEER
Foundations, Bridges, Buildings.
BERLIN, ONT.

JAMES C. KENNEDY,

MEM. CAN. SOC. C. E.
Civil and Hydraulic Engineer
Examinations, Reports, Plans, Estimates,
Supervision of Construction of Water
Powers, Waterworks, Sewerage, etc.
P. O. Box 131 HAWKESBURY, ONT., and
877 Dorchester Street, MONTREAL, QUE.

ROSS & HOLTGATE

**Consulting and
Supervising Engineers**
Water Powers, Electric Light and Power
Plants, Structural Work, Reports,
Estimates, Arbitrations.
80 ST. FRANCOIS XAVIER ST. - MONTREAL

E. VON DER OSTEN & CO.,

Consulting Engineers
Industrial Plants, Waterworks,
Lighting and Power Plants
Sewerage and Sewage Disposal
Garbage Reduction Plants
Municipal Improvements
73 Queen Street West,
507 Manning Chambers, TORONTO, ONT.

Cable: Ackcoll

J. J. COLLINS

B.A.S., C.E., M.E., E.E.
Ottawa, Ont., Canada

EDWARD B. MERRILL
**ELECTRICAL & MECHANICAL
ENGINEER**
16 KING ST. W. TORONTO

RODERICK J. PARKE

A. M. Can. Soc. C. E. A. M. Amer. Inst. E. E.
CONSULTING ELECTRICAL ENGINEER.
Electrical Light and Power.
Steam Plants, Gas Power Plants, Water
Power Plants
Estimates, Tests, Reports, Valuations.
62-53 James Building - TORONTO, CAN.
Long Distance Telephones—Office and Residence
Cable Address "Rodparke" (W. U. Code.)

John H. Jackson

CIVIL ENGINEER
WATER POWER, ELECTRIC RAIL-
WAYS, STRUCTURAL STEEL.
Niagara Falls, Canada
Associated with Charles H. Mitchell,
C. E., Hydraulic Engineer.

CEMENT TESTING

Dr. J. T. Donald
Official Analyst to the Dominion Government.
Established 1880.
Physical and Chemical Tests on all kinds of
CEMENTS and RAW MATERIALS. Prompt
returns and lowest rates consistent with ac-
curate work.
12 St. Francois Xavier Street, Montreal, Canada.

CHARLES BRANDEIS

A. M. Can. Soc. C. E., A. M. Amer. Inst. E. E.
Mem. Amer. Electro-Chemical Soc., Etc.
CONSULTING ENGINEER
Estimates, Plans and Supervision of Hydraulic
and Steam-Electric Light, Power and Railroad
Plants, Specifications, Reports, Switchboard
Designs, Complete Factory Installations, Elec-
tric Equipment of Mines and Electro-Chemical
Plants.
Long Distance Telephone Main 32-6.
Cable Address: Brandeis-Montreal.
W. U. Code, Univ-Edition.
Liverpool & London MONTREAL
& Globe Building.

RAILS For Contractors, Switches, Gir-
ders, &c.
New and Second Hand.
LOCOMOTIVES AND CARS

John J. Gartshore
83 Front St. West,
Opposite Queen's Hotel.) TORONTO

THE ONTARIO ASPHALT BLOCK CO., L'T'D.

MANUFACTURERS OF
ASPHALT BLOCK PAVING
Information and samples furnished municipalities on application.
Main Office: WINDSOR, ONT. Works: WALKERVILLE, ONT.

'IMPERIAL BRAND' PORTLAND CEMENT

You will surely admit that the best is none too good, and if you are
requiring Cement give "IMPERIAL BRAND" a trial. We guarantee
our product and can ship a quantity at once. Write for prices, etc., to
The Imperial Cement Company, Limited
OWEN SOUND, ONT.

THE CANADIAN SEWER PIPE CO.

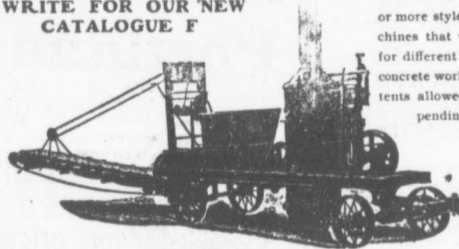


MANUFACTURERS OF
FOR
Sewers, Culverts and Water Pipes
Inverts for Brick Sewers

WRITE FOR DISCOUNTS
ST. JOHNS, P.Q. HAMILTON, ONT. TORONTO, ONT.

The Greatest Concrete Mixer Yet Made

WRITE FOR OUR NEW
CATALOGUE F



This is only one of 30
or more styles of ma-
chines that we make
for different kinds of
concrete work. 10 pa-
tents allowed, others
pending

NUMBER OF PATENTS
35,664
672,934
675,035
675,036
675,037
698,182
698,910
699,667
699,668
701,312

Also
Mortar and
Asphalt Mixers

DRAKE STANDARD MACHINE WORKS

Factory, Office and Salesroom, 298-300-302 W. Jackson Boul.
7-9-11-13 Garden Street, Chicago. Chicago, Ill., U. S. A.
Eastern Agent, Walter S. King, 27 St. John's Place, Brooklyn, N. Y.

304
3ros.,
Com-
Tile
xperts.
T
REAL
cials
Co.
da.
ONT.

O.
for
ocks
ll kinds
ackages

Sound, to the Jane Basin: R. C. Riblett, contractor, price about \$72,000.

ARNPRIOR, ONT. — Supply of road machinery: Ten ton roller, Waterous Company, Brantford; rock crusher, Sawyer-Massey Company, Hamilton.

NIAGARA FALLS, ONT.—Sewers in Section 15: Bell & Lorenzo, successful tenderers, \$4,097.87. Other tenderers, Cole & McMurray, \$4,565; Stewart & Langley, \$5,240; Thomas Midforth, \$5,334.

OTTAWA, ONT.—Synagogue on King street for Hebrew congregation: Architect, J. W. H. Watts; masonry, Geo. A. Crain; carpentry, Taylor Lackey; plumbing, McKinley & Northwood; painting, W. J. Carson; roofing, John Carnocahn; electric work, O'Reilly & Murphy; plastering, J. F. Maunder; steam heating, electric lighting, cost \$8,500.—New church for Glebe Baptist congregation: Architects, Burke & Horwood, Toronto; supervising architect, J. W. H. Watts, Ottawa; mason and brick work, Alex. Garvock; carpentry, Taylor & Lackey; painting Wm. Howell; plastering, J. F. Maunder; lighting, J. A. L. Elliott; building will be 96 x 65 feet, brick, stone foundation, cost \$15,000.

WINNIPEG, MAN.—Fire station on Maple street: Masonry, P. Flodden, \$11,427; carpentry and tin work, Hugh Hudson, \$7,850; heating and plumbing, Cotter Bros., \$1,900; painting and glazing, Nisbet & Chandler, \$675; electric wiring, Hudson Electric Company, \$69.—Sub-contracts for C. P. R. hotel: Ornamental iron work, Herzog Iron Works Company, St. Paul; painting and glazing, W. P. Scott, Montreal; plumbing and heating, James Ballantyne, Montreal; structural steel work, Dominion Bridge Company, Montreal; fire-proofing, Roebling Construction Company, Buffalo, N.Y.; roofing and galvanized iron work, Douglas Bros. and Dinele Bros., Winnipeg. It is the intention of P. Lyall & Son to do the excavating, brickwork, concrete, masonry and terra cotta themselves.

DOMINION SUPPLEMENTARY ESTIMATES.

Supplementary estimates were last week submitted to the Dominion Parliament amounting to \$1,865,639. Among the items for railways and canals are the following:

Intercolonial railway, building a spur line of railway from I. C. R. station at Riviere Ouelle to the wharf on the St. Lawrence, \$6,300; St. Andre, extension of siding, \$1,000; freight houses at Elgin Road, L'Anse a Giles and Trois Saumons, \$1,500; St. Charles Junction, borehole for water supply, \$4,750; Campbellton, siding on wharf, \$1,250; Sussex, platform extension at military sidings, \$950; Springhill Junction, borehole for water supply, \$2,800; siding at Pictou Landing, \$14,500.

Lachine canal, to renew masonry wall, basin No. 2, \$3,800; repairs to old locks 1 and 2, \$25,000; lock gates, \$30,000; cement for tail-race at Cote St. Paul, \$2,600; tail-race Cote St. Paul, \$3,956; cement for wall, basin No. 2, \$2,025; to provide booms below lock No. 5, \$1,000; St. Ours lock, to complete renewing landing wharf below lock, \$3,500; removing old piers and cleaning lower entrance to lock, \$3,000; Cornwall canal, to purchase and fit up concreting apparatus, strengthening and protecting north bank, \$9,700; Trent canal, to lower floor and sill of lock at Peterboro', \$9,000; rebuilding dam at Peterboro', \$3,000; Rideau canal, swing bridge over canal on line of Concession street, Ottawa, \$1,000; Lachine canal, electric generator, electric cables and shafting, \$5,000; enlargement and im-

provements, \$24,000; Soulanges canal, construction and equipment (revote \$22,000), \$62,000.

PUBLIC WORKS.

The appropriations for public works include the following:

New Brunswick, St. John quarantine station on Partridge Island, hospital and two detention buildings and acetylene gas plant and building, Governor General's Warrant, \$32,500; North-west Territories, Yorkton court house and jail, \$600; immigration buildings, \$20,000; Campbellton ferry, landing wharf, \$700; River St. Maurice, dredging middle channel, \$2,250; River St. Maurice, between Grandes Piles and La Tuque, dredging, \$1,900; Riviere Batican, dredging channel at mouth, \$1,380; Ste. Anne de Sorel, ice piers, etc., \$1,660; Point Edward, dredging, \$5,600; River St. Lawrence, dredging steamboat channel through shoal at foot of Wolfe Island, \$600; Bayfield, extension of southern pier, to complete payments, \$1,600; Collingwood, harbor improvements, \$6,950; depot harbor, dredging, \$11,200; Gananoque, dredging, \$400; Lake Temiskaming, wharves, \$400; River Otonabee, dredging at Peterboro, \$410; Sydney harbor breakwater, \$3,000; dredge vessel repairs, \$15,000; Pelee Island cable connection with mainland, \$1,150; Qu'Appelle, Edmonton section, loop line from a point between Bresaylor and Onion Lake stations to Lloydminster, \$4,500.

The assets of Joseph Lambert & Fils, contractors, Montreal, have been sold.

JOHN GALT, C.E. & M.E.
MEM. CAN. SOC. C.E. AND C.E.A., ETC.
CONSULTING ENGINEER AND EXPERT
National Trust Building
20 King Street East Toronto
Specialties—Water Supply and Sewerage.

If Its

**WATERWORKS
PUMPING
ENGINES**

**FIRE
HYDRANTS**

OR

V AL V E S
for
Steam, Water, Gas
and
Radiation

Get Catalog and Prices of
THE KERR ENGINE CO'Y
Limited
Walkerville - - Ontario

JOSSON CEMENT .. Manufactured at
NIEL ON RUPELL
Is the Highest Grade Artificial Portland Cement and the Best for High
Class Work. Has been used largely for Government and Municipal Works.
TO BE HAD FROM ALL CANADIAN DEALERS
C. I. de Sola, Manager in Canada .. 180 St. James Street, MONTREAL

**BLAST . . SLAG A MOLTEN
FURNACE ROCK . . .**
Cement Sidewalks, Road Foundation and Concrete Work
**STRONG AS STONE
CHEAP AS GRAVEL**
Doolittle & Wilcox, Hamilton, Ont.

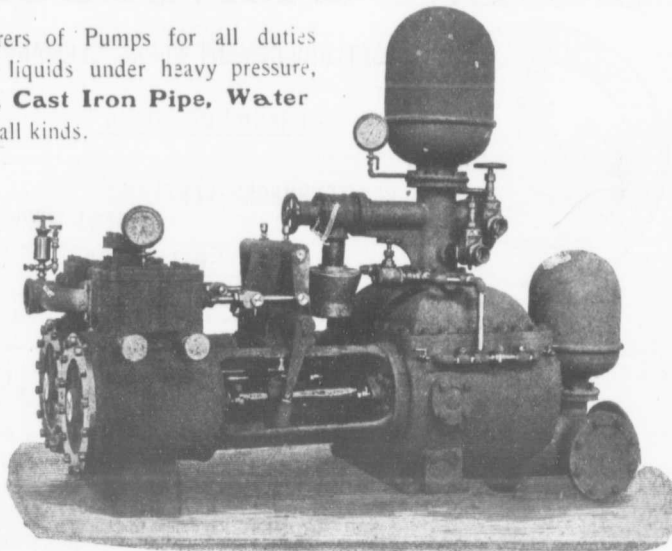
Portland Cement..
ALL GRADES.
Write or Telegraph to
BELLHOUSE, DILLON & CO.
201-203 Coristine Building, St. Nicholas Street, Montreal
for prices—Large stock constantly
on hand.



Largest Makers in the World.

UNDERWRITERS' PUMPS

We are manufacturers of Pumps for all duties requiring the delivery of liquids under heavy pressure, **Valves, Hydrants, Cast Iron Pipe, Water Works Supplies** of all kinds.



STEAM BOILERS

—AND—

RIVETED STEEL

PLATE WORK

of every description.

CANADA FOUNDRY COMPANY, LIMITED

Head Office and Works: TORONTO, ONT.

District Offices: MONTREAL HALIFAX OTTAWA WINNIPEG VANCOUVER ROSSLAND

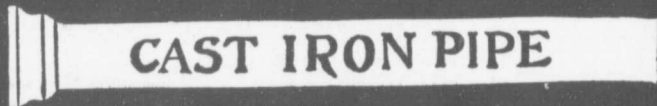
THOS. J. DRUMMOND, President.

JAMES T. McCALL, Secretary-Treasurer.

C. ED. GUDWILL, Vice-President.

Montreal Pipe Foundry Co., Limited

Special Castings
Flange Pipe
Branches
Hydrants
Valves



CAST IRON PIPE

Valve Boxes and general Water Works Supplies

Works at: LACHINE, QUE.
THREE RIVERS, QUE.
LONDONDERRY, N. S.

Combined daily capacity:
175 Tons Pipes and Castings.

HEAD OFFICE CANADA LIFE BUILDING.

MONTREAL

ALEX. GARTSHORE, President. J. G. ALLAN, Secretary and Treasurer. JAS. THOMSON, Vice-President and General Man.

THE GARTSHORE-THOMSON PIPE & FOUNDRY CO. LIMITED.

Manufacturers of:::



CAST IRON PIPE

Flexible and Flange Pipe,
Special Castings and all kinds of
Waterworks Supplies

3 inches to 60 inches diameter.

For Water, Gas, Culvert and Sewer

~~~~~ HAMILTON, ONT ~~~~~

# SIEVERS & RAVENBORG, HAMBURG, GERMANY

Sole Export Agents of the Famous  
**PORTLAND CEMENT WORKS, GERMANIA**  
Largest Cement Works in Europe



BRAND "GERMANIA"  
[Also of the]  
**BREITENBURGER PORTLAND CEMENT WORKS**  
BRAND "HERCULES"

We solicit enquiries and orders from Canadian Dealers and Contractors on these well known Cements. Orders accepted only when accompanied by letters of credit.

### Prices of Building Materials.

**FRESSED BRICK, Per M.**  
MILTON PRESSED BRICK AND SEWER PIPE CO.  
F.O.B. F.O.B.  
Milton, Ont. Montreal

|               |       |       |
|---------------|-------|-------|
| Red No. 1     | 15 00 | 15 00 |
| " 2           | 15 00 | 15 00 |
| " 3           | 14 00 | 14 00 |
| Buff No. 1    | 20 00 | 20 00 |
| " 2           | 18 50 | 18 50 |
| Brown         | 15 50 | 15 50 |
| Roman Red     | 30 50 | 30 50 |
| Buff          | 33 50 | 33 50 |
| Brown         | 40 50 | 40 50 |
| Hard Building | 12 00 | 12 00 |
| Sewers        | 12 00 | 12 00 |
| Backing       | 11 50 | 11 50 |

*Please write to head office, Milton, Ont., for catalogue and prices.*

DON VALLEY PRESSED BRICK WORKS.  
Nos. 1, 2 and 3, Red Pressed Bricks  
Nos. 1 and 2 Buff Pressed Brick  
No. 1 Brown Pressed Brick  
Roman Red, Buff and Brown, Pressed Bricks  
Ornamental Bricks of all kinds for Mantel purposes.  
Parsons Terra Cotta Fireproofing of all Descriptions.  
Vitrified Street-Paving Bricks  
Semi-Vitrified Foundation Bricks  
Common Stock Red and Grey Bricks  
Sewer Bricks  
Tone for Macadamized Roadways

*Please write to head office, Milton, Ont., for catalogue and prices.*

ORONTO PRESSED BRICK AND TERRA COTTA WORKS  
F.O.B. F.O.B.  
Milton, Ont. Montreal

|               |       |       |
|---------------|-------|-------|
| Red No. 1     | 12 50 | 12 00 |
| " 2           | 10 50 | 10 00 |
| " 3           | 8 50  | 14 00 |
| Buff No. 1    | 15 00 | 20 00 |
| " 2           | 13 00 | 18 00 |
| Brown         | 20 00 | 25 00 |
| Roman Red     | 30 00 | 30 50 |
| Buff          | 30 00 | 33 50 |
| Brown         | 35 00 | 40 50 |
| Hard Building | 6 50  | 12 00 |
| Sewers        | 6 50  | 12 00 |
| Backing       | 6 50  | 11 50 |

Moulded and Ornamental from \$2.00 to \$5.00 per sq. ft.  
Terra Cotta Strip Courses and Frieze, from 50c. to \$2.00 per ft. run.  
Roofing Tiles, \$20.00 per 1,000, \$23.00 Montreal.

BEAMSVILLE BRICK AND TERRA COTTA CO.  
F.O.B. F.O.B.  
Beamsville, Montreal

|                       |       |       |
|-----------------------|-------|-------|
| Red Peerless Facing   | 35 00 | 30 50 |
| " No. 1               | 13 00 | 18 50 |
| " No. 2               | 11 00 | 16 50 |
| " No. 3               | 8 50  | 14 00 |
| Brown Peerless Facing | 20 00 | 25 50 |
| " No. 1               | 18 00 | 23 50 |
| Buff Peerless         | 20 00 | 25 50 |
| " No. 1               | 18 00 | 23 50 |
| " No. 2               | 15 00 | 20 50 |

Moulded and Ornamental Brick from \$3 to \$10 per C.  
Roman Red (Size 1 1/2 x 4 x 7 1/2 in.), 28 00  
" buff 28 00 33 50  
" Brwn 34 00 39 50  
Vitrified Pavin Brick No. 1 18 00 23 50  
" No. 2 15 00 20 50  
" No. 3 6 00 11 50  
Roofing Tile 77 00 26 00

TORONTO POTTERY CO.  
F. O. B. Toronto  
CAR lots Less

|              |          |          |
|--------------|----------|----------|
| Bo d         | 21 00 M. | 26 00 M. |
| W. W. Co.    | 24 50 M. | 28 50 M. |
| Savage Crown | 28 50 M. | 32 00 M. |

STONEN. Toronto, Montreal

|                                                                                                  |       |      |
|--------------------------------------------------------------------------------------------------|-------|------|
| Common Red 1c per tonse, delivered at building                                                   | 13 50 | 1 00 |
| Large flat Rubble, per tonse, delivered                                                          | 14 00 | 1 00 |
| Foundation Blocks, per c. ft. (range) (Stanstead) Ashlar, 6 in. to 1 1/2 ft. sup. 0 1/2, per ft. | 43    | 50   |
| Amherst Red Sandstone                                                                            | 85    | 70   |
| Amherst, N.C. per cub. ft. Sackville, N.B. red stone f. o. b. Quarries Massillon                 | 45    | 45   |

## W. & F. P. CURRIE & CO.

345 St. James St., Montreal

Importers of  
**SEWER PIPES,**  
**CULVERT PIPES, ETC.**  
**VENT LININGS,**  
**FLUE COVERS,**  
**FIRE BRICKS,**  
**FIRE CLAY,**  
**WHITING.**



**PORTLAND CEMENTS,**  
**HIGH GRADE ENGLISH**  
" " GERMAN  
" " BELGIAN  
**PLASTER OF PARIS**  
**BORAX,**  
**CHINA CLAY.**

|                                                                                                | Toronto. | Montreal |                                                     | Toronto | Montreal |
|------------------------------------------------------------------------------------------------|----------|----------|-----------------------------------------------------|---------|----------|
| Stanstead granite paving blocks 4 1/2 x 10 1/2 x 4 1/2 in. x 1/4 in. per M.                    |          | 50 00    | English-Brock's Shoobridge Anchor Accelerator Brand | 2 35    | 2 40     |
| Granite curbing stone, 6x 10 in. per lineal foot                                               | 85       | 75       | elgian-                                             |         |          |
| Bucotouche Olive Freestone                                                                     |          | 80       | "Castle" Brand                                      | 2 60    | 2 70     |
| Olive Sandstone (Indian-town, N. B.)                                                           | 80       | 70       | "Jossou" Brand                                      | 1 90    | 2 00     |
| Brown Sandstone (Sackville, N. B.)                                                             | 80       | 70       | "North's Condor                                     | 2 35    | 2 50     |
| Most red sandstone, per cu. ft.                                                                |          | 60       | Cathedral                                           | 1 75    | 1 85     |
| Black Pasture buff stone per cu. ft.                                                           |          | 50       | "White Cross"                                       | 2 00    | 2 10     |
| Nova Scotia blue grey, per cu. ft.                                                             |          | 65       | Atlas                                               |         | 1 80     |
| Coursers, 6 to 8 in. bed, f. o. b., St. Mary's, per cord                                       | 7 00     |          | Hammer                                              |         | 1 80     |
| Footings, 6 to 10 in. wide, per cubic foot                                                     |          | 15       | Red Cross Brand                                     |         | 1 05     |
| Dimension Stone, f. o. b. St. Mary's, per cubic foot                                           |          | 35       | Waterloo                                            |         | 2 25     |
| Granite (Laurentian Pink) Ashlar 6 to 2 1/2 in. rise 9 in. per c. ft.                          | 25       |          | Raevel's 305 lb. bbl.                               |         | 2 50     |
| Dimension Stock Granite (Laurentian Pink) for building purposes, per c. ft., f. o. b. quarries | 40       |          | White Star                                          | 2 25    | 2 55     |
| Do., for polishing purposes, up to 2 tons weight, per cubic foot                               | 70       |          | Gasselle                                            | 2 20    | 2 35     |
| Dimension stock granite for building purposes, per cu. ft.                                     | 50       |          | German-                                             |         |          |
| Do., for polishing purposes, up to 2 tons weight, per cubic ft.                                | 1 00     |          | Offenbacher Brand                                   | 2 80    | 2 90     |
| Paving sets, per thousand block                                                                | 60 00    |          | Dyckerhoff                                          | 2 05    | 2 15     |
|                                                                                                |          |          | Karlstadt                                           | 2 80    | 2 90     |
|                                                                                                |          |          | Heemmoor                                            | 2 30    | 2 40     |
|                                                                                                |          |          | Cannon                                              | 1 85    | 1 95     |
|                                                                                                |          |          | Heidelberg                                          | 1 30    | 1 40     |
|                                                                                                |          |          | Hercules                                            | 2 10    | 2 20     |
|                                                                                                |          |          | Canadian-                                           |         |          |
|                                                                                                |          |          | Rathbun's Star                                      | 1 90    | 2 25     |
|                                                                                                |          |          | Essign                                              | 1 70    | 2 05     |
|                                                                                                |          |          | Citadel                                             |         | 2 00     |
|                                                                                                |          |          | Trowel                                              |         | 1 75     |
|                                                                                                |          |          | Samson Brand                                        | 2 00    | 2 05     |
|                                                                                                |          |          | Magnat                                              | 1 60    | 1 80     |
|                                                                                                |          |          | Monarch                                             | 1 90    | 2 00     |
|                                                                                                |          |          | Hercules                                            |         | 2 00     |
|                                                                                                |          |          | Lion Brand                                          |         | 1 75     |
|                                                                                                |          |          | Imperial                                            |         | 2 00     |
|                                                                                                |          |          | Crescent 375 lbs. gross                             | 2 30    | 2 40     |
|                                                                                                |          |          | Diamond 350 "                                       | 2 20    | 2 30     |
|                                                                                                |          |          | American-                                           |         |          |
|                                                                                                |          |          | Alpha Brand                                         | 1 75    | 1 80     |
|                                                                                                |          |          | Alsen's                                             | 2 50    | 2 00     |
|                                                                                                |          |          | Lehigh, in bbl., 375 lbs.                           |         | 2 00     |
|                                                                                                |          |          | " cotton sacks, 250 net                             |         | 2 25     |
|                                                                                                |          |          | " apr. bags "                                       |         | 2 10     |
|                                                                                                |          |          | "Iron Clad" in bags 350 lbs.                        |         | 1 90     |
|                                                                                                |          |          | "Invicta" "                                         |         | 1 75     |
|                                                                                                |          |          | "Adirondack" "                                      |         | 1 60     |
|                                                                                                |          |          | Keene's Superfine "Whites"                          | 10 00   | 13 00    |
|                                                                                                |          |          | Keene's Course "Whites"                             | 6 50    | 7 00     |
|                                                                                                |          |          | Fire Bricks, Newcastle, per M                       | 27 00   | 32 00    |
|                                                                                                |          |          | " Scotch "                                          | 28 00   | 33 00    |
|                                                                                                |          |          | Vulcanite (Toronto Pottery Co., Toronto) 1 50       |         |          |
|                                                                                                |          |          | in paper bags                                       |         | 1 80     |
|                                                                                                |          |          | " wooden bbls.                                      |         | 2 00     |
|                                                                                                |          |          | " cotton bags                                       |         | 2 05     |

CORRECTED UP TO JULY 5TH