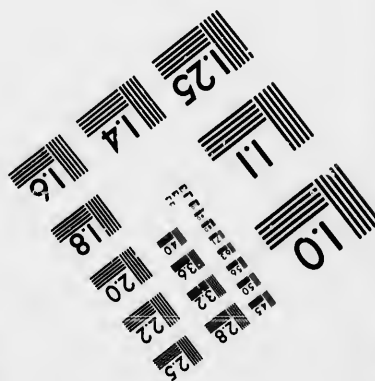
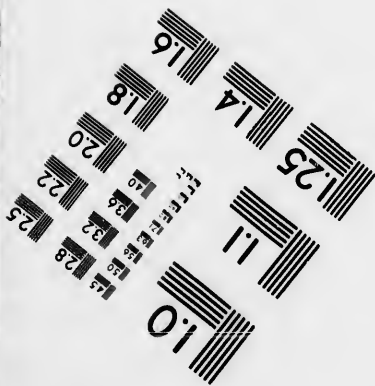
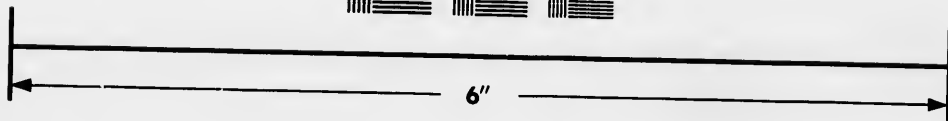
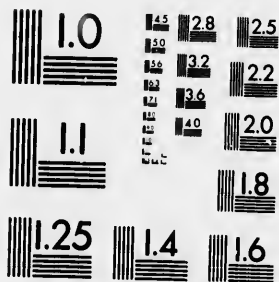


**IMAGE EVALUATION
TEST TARGET (MT-3)**



**Photographic
Sciences
Corporation**

23 WEST MAIN STREET
WEBSTER, N.Y. 14580
(716) 872-4503

**CIHM
Microfiche
Series
(Monographs)**

**ICMH
Collection de
microfiches
(monographies)**



Canadian Institute for Historical Microreproductions / Institut canadien de microreproductions historiques

© 1993

Technical and Bibliographic Notes / Notes techniques et bibliographiques

The Institute has attempted to obtain the best original copy available for filming. Features of this copy which may be bibliographically unique, which may alter any of the images in the reproduction, or which may significantly change the usual method of filming, are checked below.

L'Institut a microfilmé le meilleur exemplaire qu'il lui a été possible de se procurer. Les détails de cet exemplaire qui sont peut-être uniques du point de vue bibliographique, qui peuvent modifier une image reproduite, ou qui peuvent exiger une modification dans la méthode normale de filmage sont indiqués ci-dessous.

Coloured covers/
Couverture de couleur

Coloured pages/
Pages de couleur

Covers damaged/
Couverture endommagée

Pages damaged/
Pages endommagées

Covers restored and/or laminated/
Couverture restaurée et/ou pelliculée

Pages restored and/or laminated/
Pages restaurées et/ou pelliculées

Cover title missing/
Le titre de couverture manque

Pages discoloured, stained or foxed/
Pages décolorées, tachetées ou piquées

Coloured maps/
Cartes géographiques en couleur

Pages detached/
Pages détachées

Coloured ink (i.e. other than blue or black)/
Encre de couleur (i.e. autre que bleue ou noire)

Showthrough/
Transparence

Coloured plates and/or illustrations/
Planches et/ou illustrations en couleur

Quality of print varies/
Qualité inégale de l'impression

Bound with other material/
Relié avec d'autres documents

Continuous pagination/
Pagination continue

Tight binding may cause shadows or distortion along interior margin/
La reliure serrée peut causer de l'ombre ou de la distorsion le long de la marge intérieure

Includes index(es)/
Comprend un (des) index

Blank leaves added during restoration may appear within the text. Whenever possible, these have been omitted from filming/
Il se peut que certaines pages blanches ajoutées lors d'une restauration apparaissent dans le texte, mais, lorsque cela était possible, ces pages n'ont pas été filmées.

Title on header taken from:/
Le titre de l'en-tête provient:

Title page of issue/
Page de titre de la livraison

Caption of issue/
Titre de départ de la livraison

Masthead/
Générique (périodiques) de la livraison

Additional comments:/
Commentaires supplémentaires:

Page 23 is incorrectly numbered page 2.

This item is filmed at the reduction ratio checked below/
Ce document est filmé au taux de réduction indiqué ci-dessous.

10X	14X	18X	22X	26X	30X
<input type="checkbox"/>	<input type="checkbox"/>	<input checked="" type="checkbox"/>	<input type="checkbox"/>	<input type="checkbox"/>	<input type="checkbox"/>
12X	16X	20X	24X	28X	32X

The copy filmed here has been reproduced thanks to the generosity of:

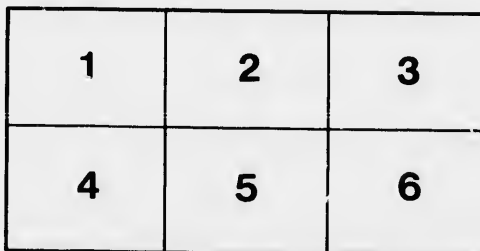
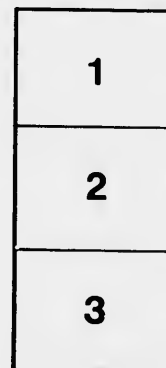
National Library of Canada

The images appearing here are the best quality possible considering the condition and legibility of the original copy and in keeping with the filming contract specifications.

Original copies in printed paper covers are filmed beginning with the front cover and ending on the last page with a printed or illustrated impression, or the back cover when appropriate. All other original copies are filmed beginning on the first page with a printed or illustrated impression, and ending on the last page with a printed or illustrated impression.

The last recorded frame on each microfiche shall contain the symbol → (meaning "CONTINUED"), or the symbol ▼ (meaning "END"), whichever applies.

Maps, plates, charts, etc., may be filmed at different reduction ratios. Those too large to be entirely included in one exposure are filmed beginning in the upper left hand corner, left to right and top to bottom, as many frames as required. The following diagrams illustrate the method:



L'exemplaire filmé fut reproduit grâce à la générosité de:

Bibliothèque nationale du Canada

Les images suivantes ont été reproduites avec le plus grand soin, compte tenu de la condition et de la netteté de l'exemplaire filmé, et en conformité avec les conditions du contrat de filmage.

Les exemplaires originaux dont la couverture en papier est imprimée sont filmés en commençant par le premier plat et en terminant soit par la dernière page qui comporte une empreinte d'impression ou d'illustration, soit par le second plat, selon le cas. Tous les autres exemplaires originaux sont filmés en commençant par la première page qui comporte une empreinte d'impression ou d'illustration et en terminant par la dernière page qui comporte une telle empreinte.

Un des symboles suivants apparaîtra sur la dernière image de chaque microfiche, selon le cas: le symbole → signifie "A SUIVRE", le symbole ▼ signifie "FIN".

Les cartes, planches, tableaux, etc., peuvent être filmés à des taux de réduction différents. Lorsque le document est trop grand pour être reproduit en un seul cliché, il est filmé à partir de l'angle supérieur gauche, de gauche à droite, et de haut en bas, en prenant le nombre d'images nécessaire. Les diagrammes suivants illustrent la méthode.

qu'il
cet
de vue
ge
ation
ués

7

PRICES
OF
GRAINS, ROOTS,
AND
PRODUCTS,
SHOWING THEIR WEIGHTS TO THE
BUSHEL, AND THEIR EQUIVA-
LENTS PER ONE HUNDRED
POUNDS.

m r

TORONTO:
A. DREDGE & CO., WHOLESALE STATIONERS,
1874.

HF 5716

G7

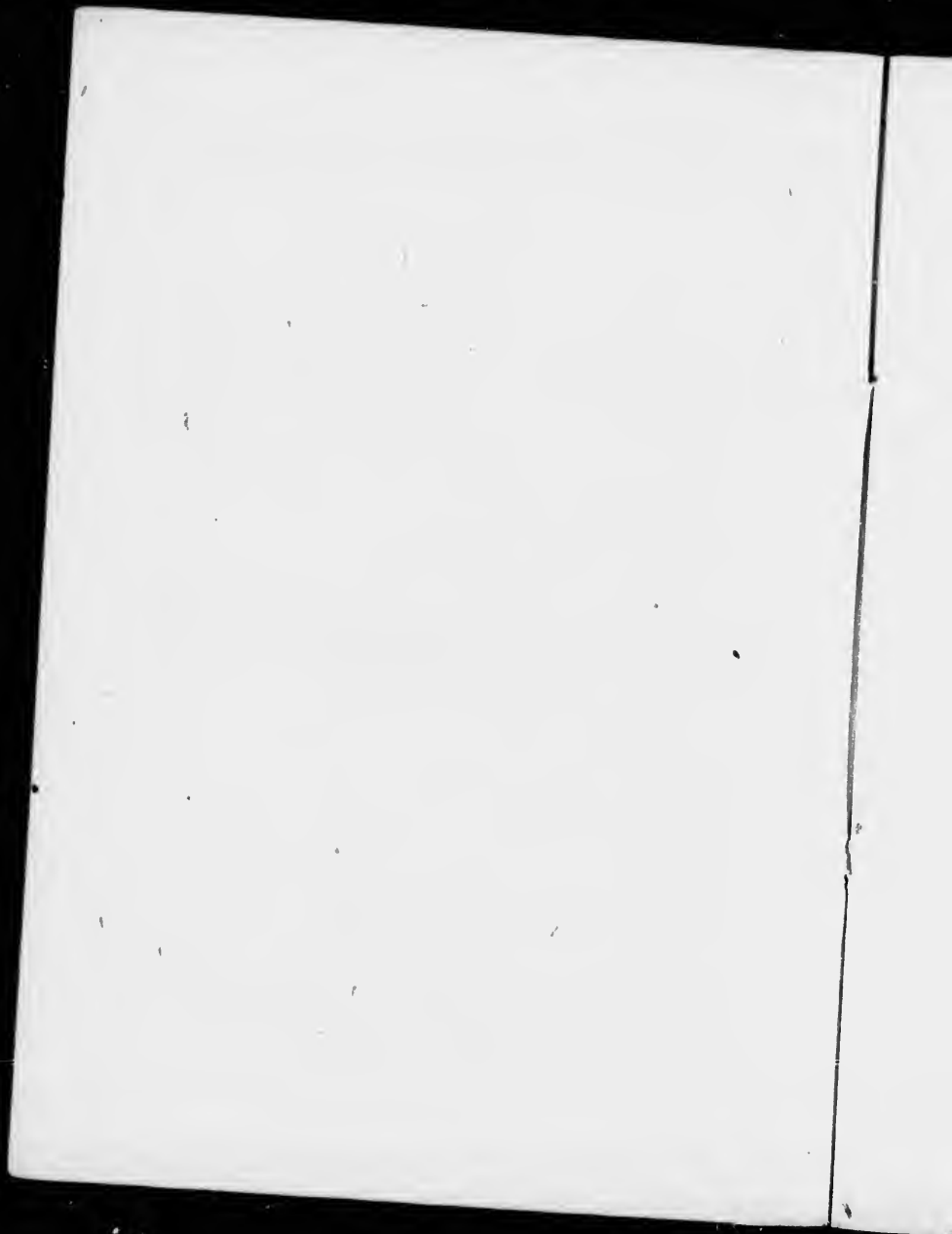
P7

Entered according to Act of Parliament of Canada,
in the year 1874, by A. Macaulay, in the office of the
Minister of Agriculture.

BELL & Co.,
PRINTERS,
TORONTO.

Grains and Products Classified.

- 60 lbs. to bushel } Wheat, Peas, Beans, Clover
Page 5 to 14. } Seed, Potatoes, Turnips,
Carrots, Parsnips, Beets
and Onions.
- 56 lbs. to bushel } Indian Corn, Rye, Salt.
Page 15 to 17. }
- 50 lbs. to bushel } Flax Seed.
Page 18 to 19. }
- 48 lbs. to bushel } Barley, Timothy Seed and
Page 20 to 25. } Buckwheat.
- 44 lbs. to bushel } Hemp Seed.
Page 26 to 28. }
- 34 lbs. to bushel } Oats.
Page 29 to 31. }
- 33 lbs. to bushel } Dried Peaches.
Page 32. }
- 22 lbs. to bushel } Dried Apples.
Page 32. }
- Blue Grass Seed, 14 lbs. to bushel.
- Malt, 36 lbs. to bushel.
- Castor Beans, 44 lbs. to bushel.



PRICES OF GRAINS, ROOTS AND PRODUCTS

OF
SIXTY POUNDS' WEIGHT TO THE BUSHEL,
SHOWING THEIR EQUIVALENT PER
ONE HUNDRED POUNDS.

Per 100 lbs.		Per bush.		Per 100 lbs.		Per bush.	
\$	c.	\$	c. m.	\$	c.	\$	c. m.
0 10	0 06	00	0 30	0 18	00
0 11	0 06	60	0 31	0 18	60
0 12	0 07	00	0 32	0 19	20
0 13	0 07	80	0 33	0 19	80
0 14	0 08	40	0 34	0 20	40
0 15	0 09	00	0 35	0 21	00
0 16	0 09	60	0 36	0 21	60
0 17	0 10	20	0 37	0 22	20
0 18	0 10	80	0 38	0 22	80
0 19	0 11	40	0 39	0 23	40
0 20	0 12	00	0 40	0 24	00
0 21	0 12	60	0 41	0 24	60
0 22	0 13	20	0 42	0 25	20
0 23	0 13	80	0 43	0 25	80
0 24	0 14	40	0 44	0 26	40
0 25	0 15	00	0 45	0 27	00
0 26	0 15	60	0 46	0 27	60
0 27	0 16	20	0 47	0 28	20
0 28	0 16	80	0 48	0 28	80
0 29	0 17	40	0 49	0 29	40

Prices of Grains, Roots and Products of sixty pounds' weight to the bushel, showing their equivalent per 100 lbs.

Per 100 lbs.	Per bush.	Per 100 lbs.	Per bush.
\$ c.	\$ c. m.	\$ c.	\$ c. m.
0 50	0 30 00	0 75	0 45 00
0 51	0 30 60	0 76	0 45 60
0 52	0 31 20	0 77	0 46 20
0 53	0 31 80	0 78	0 46 80
0 54	0 32 40	0 79	0 47 40
0 55	0 33 00	0 80	0 48 00
0 56	0 33 60	0 81	0 48 60
0 57	0 34 20	0 82	0 49 20
0 58	0 34 80	0 83	0 49 80
0 59	0 35 40	0 84	0 50 40
0 60	0 36 00	0 85	0 51 00
0 61	0 36 60	0 86	0 51 60
0 62	0 37 20	0 87	0 52 20
0 63	0 37 80	0 88	0 52 80
0 64	0 38 40	0 89	0 53 40
0 65	0 39 00	0 90	0 54 00
0 66	0 39 60	0 91	0 54 60
0 67	0 40 20	0 92	0 55 20
0 68	0 40 80	0 93	0 55 80
0 69	0 41 40	0 94	0 56 40
0 70	0 42 00	0 95	0 57 00
0 71	0 42 60	0 96	0 57 06
0 72	0 43 20	0 97	0 58 20
0 73	0 43 80	0 98	0 58 80
0 74	0 44 40	0 99	0 59 40

sixty
valent

*Prices of Grains, Roots and Products of sixty
pounds' weight to the bushel, showing their equivalent
per 100 pounds.*

bush.

c. m.

45 00

45 60

46 20

46 80

47 40

48 00

48 60

49 20

49 80

50 40

51 00

51 60

52 20

52 80

53 40

54 00

54 60

55 20

55 80

56 40

57 00

57 06

58 20

58 80

59 40

Per 100 lbs.	Per bush.	Per 100 lbs.	Per bush.
\$ c.	\$ c. m.	\$ c.	\$ c. m.
1 00	0 60 00	1 25	0 75 00
1 01	0 60 60	1 26	0 75 60
1 02	0 61 20	1 27	0 76 20
1 03	0 61 80	1 28	0 76 80
1 04	0 62 40	1 29	0 77 40
1 05	0 65 00	1 30	0 78 00
1 06	0 63 60	1 31	0 78 60
1 07	0 64 20	1 32	0 79 20
1 08	0 64 80	1 33	0 79 80
1 09	0 65 40	1 34	0 80 40
1 10	0 66 00	1 35	0 81 00
1 11	0 66 60	1 36	0 81 60
1 12	0 67 20	1 37	0 82 20
1 13	0 67 80	1 38	0 82 80
1 14	0 68 40	1 39	0 83 40
1 15	0 69 00	1 40	0 84 00
1 16	0 69 60	1 41	0 84 60
1 17	0 70 20	1 42	0 85 20
1 18	0 70 80	1 43	0 85 80
1 19	0 71 40	1 44	0 86 40
1 20	0 72 00	1 45	0 87 00
1 21	0 72 60	1 46	0 87 60
1 22	0 73 20	1 47	0 88 20
1 23	0 73 80	1 48	0 88 80
1 24	0 74 40	1 49	0 89 40

Prices of Grains, Roots and Products of sixty pounds weight to the bushel, showing their equivalent per 100 pounds.

Per 100 lbs.	Per bush.	Per 100 lbs.	Per bush.
\$ c.	\$ c. m.	\$ c.	\$ c. m.
1 50	0 90 00	1 75	1 05 00
1 51	0 90 60	1 76	1 05 60
1 52	0 91 20	1 77	1 06 20
1 53	0 91 80	1 78	1 06 80
1 54	0 92 40	1 79	1 07 40
1 55	0 93 00	1 80	1 08 00
1 56	0 93 60	1 81	1 08 60
1 57	0 94 20	1 82	1 09 20
1 58	0 94 80	1 83	1 09 80
1 59	0 95 40	1 84	1 10 40
1 60	0 96 00	1 85	1 11 00
1 61	0 96 60	1 86	1 11 60
1 62	0 97 20	1 87	1 12 20
1 63	0 97 80	1 88	1 12 80
1 64	0 98 40	1 89	1 13 40
1 65	0 99 00	1 90	1 14 00
1 66	0 99 60	1 91	1 14 60
1 67	1 00 20	1 92	1 15 20
1 68	1 00 80	1 93	1 15 80
1 69	1 01 40	1 94	1 16 40
1 70	1 02 00	1 95	1 17 00
1 71	1 02 60	1 96	1 17 60
1 72	1 03 20	1 97	1 18 20
1 73	1 03 80	1 98	1 18 80
1 74	1 04 40	1 99	1 19 40

sixty
lent

*Prices of Grains, Roots and Products of sixty
pounds' weight to the bushel, showing their equivalent
per 100 pounds.*

	Per 100 lbs.	Per bush.		Per 100 lbs.	Per bush.
	\$ c.	\$ c. m.		\$ c.	\$ c. m.
00	2 00	1 20 00	25	2 25	1 35 00
60	2 01	1 20 60	26	2 26	1 35 60
20	2 02	1 21 20	27	2 27	1 36 20
80	2 03	1 21 80	28	2 28	1 36 80
40	2 04	1 22 40	29	2 29	1 37 40
00	2 05	1 23 00	30	2 30	1 38 00
60	2 06	1 23 60	31	2 31	1 38 60
20	2 07	1 24 20	32	2 32	1 39 20
80	2 08	1 24 80	33	2 33	1 39 80
40	2 09	1 25 40	34	2 34	1 40 40
00	2 10	1 26 00	35	2 35	1 41 00
60	2 11	1 26 60	36	2 36	1 41 60
20	2 12	1 27 20	37	2 37	1 42 20
80	2 13	1 27 80	38	2 38	1 42 80
40	2 14	1 28 40	39	2 39	1 43 40
00	2 15	1 29 00	40	2 40	1 44 00
60	2 16	1 29 60	41	2 41	1 44 60
20	2 17	1 30 20	42	2 42	1 45 20
80	2 18	1 30 80	43	2 43	1 45 80
40	2 19	1 31 40	44	2 44	1 46 40
00	2 20	1 32 00	45	2 45	1 47 00
60	2 21	1 32 60	46	2 46	1 47 60
20	2 22	1 33 20	47	2 47	1 48 20
80	2 23	1 33 80	48	2 48	1 48 80
40	2 24	1 34 40	49	2 49	1 49 40

Prices of Grains, Roots and Products of sixty pounds weight to the bushel, showing their equivalent per 100 pounds.

Per 100 lbs.	Per bush.	Per 100 lbs.	Per bush.
\$ c.	\$ c. m.	\$ c.	\$ c. m.
2 50	1 50 00	2 75	1 65 00
2 51	1 50 60	2 76	1 65 60
2 52	1 51 20	2 77	1 66 20
2 53	1 51 80	2 78	1 66 80
2 54	1 52 40	2 79	1 67 40
2 55	1 53 00	2 80	1 68 00
2 56	1 53 60	2 81	1 68 60
2 57	1 54 20	2 82	1 69 20
2 58	1 54 80	2 83	1 69 80
2 59	1 55 40	2 84	1 70 40
2 60	1 56 00	2 85	1 71 00
2 61	1 56 60	2 86	1 71 60
2 62	1 57 20	2 87	1 72 20
2 63	1 57 80	2 88	1 72 80
2 64	1 58 40	2 89	1 73 40
2 65	1 59 00	2 90	1 74 00
2 66	1 59 60	2 91	1 74 60
2 67	1 60 20	2 92	1 75 20
2 68	1 60 80	2 93	1 75 80
2 69	1 61 40	2 94	1 76 40
2 70	1 62 00	2 95	1 77 00
2 71	1 62 60	2 96	1 77 60
2 72	1 63 20	2 97	1 78 20
2 73	1 63 80	2 98	1 78 80
2 74	1 64 40	2 99	1 79 40

sixty
valent

*Prices of Grains, Roots and Products of sixty
pounds' weight to the bushel, showing their equivalent
per 100 pounds.*

bush.
c. m.
55 00
55 60
56 20
56 80
57 40
58 00
58 60
59 20
59 80
60 40
61 00
61 60
62 20
62 80
63 40
64 00
64 60
65 20
65 80
66 40
67 00
67 60
68 20
68 80
69 40

Per 100 lbs.	Per bush.	Per 100 lbs.	Per bush.
\$ c.	\$ c. m.	\$ c.	\$ c. m.
3 00	1 80 00	3 25	1 95 00
3 01	1 80 60	3 26	1 95 60
3 02	1 81 20	3 27	1 96 20
3 03	1 81 80	3 28	1 96 80
3 04	1 82 40	3 29	1 97 40
3 05	1 83 00	3 30	1 98 00
3 06	1 83 60	3 31	1 98 60
3 07	1 84 20	3 32	1 99 20
3 08	1 84 80	3 33	1 99 80
3 09	1 85 40	3 34	2 00 40
3 10	1 86 00	3 35	2 01 00
3 11	1 86 60	3 36	2 01 60
3 12	1 87 20	3 37	2 02 20
3 13	1 87 80	3 38	2 02 80
3 14	1 88 40	3 39	2 03 40
3 15	1 89 00	3 40	2 04 00
3 16	1 89 60	3 41	2 04 60
3 17	1 90 20	3 42	2 05 20
3 18	1 90 80	3 43	2 05 80
3 19	1 91 40	3 44	2 06 40
3 20	1 92 00	3 45	2 07 00
3 21	1 92 60	3 46	2 07 60
3 22	1 93 20	3 47	2 08 20
3 23	1 93 80	3 48	2 08 80
3 24	1 94 40	3 49	2 09 40

*Prices of Grains, Roots and Products of sixty
pounds' weight to the bushel, showing their equivalent
Per 100 pounds.*

Per 100 lbs.		Per bush.		Per 100 lbs.		Per bush.	
\$ c.		\$ c. m.		\$ c.		\$ c. m.	
3 50	2 10	00	3 75	2 25	00
3 51	2 10	60	3 76	2 25	60
3 52	2 11	20	3 77	2 26	20
3 53	2 11	80	3 78	2 26	80
3 54	2 12	40	3 79	2 27	40
3 55	2 13	00	3 80	2 28	00
3 56	2 13	60	3 81	2 28	60
3 57	2 14	20	3 82	2 29	20
3 58	2 14	80	3 83	2 29	80
3 59	2 15	40	3 84	2 30	40
3 60	2 16	00	3 85	2 31	00
3 61	2 16	60	3 86	2 31	60
3 62	2 17	20	3 87	2 32	20
3 63	2 17	80	3 88	2 32	80
3 64	2 18	40	3 89	2 33	40
3 65	2 19	00	3 90	2 34	00
3 66	2 19	60	3 91	2 34	60
3 67	2 20	20	3 92	2 35	20
3 68	2 20	80	3 93	2 35	80
3 69	2 21	40	3 94	2 36	40
3 70	2 22	00	3 95	2 37	00
3 71	2 22	60	3 96	2 37	60
3 72	2 23	20	3 97	2 38	20
3 73	2 23	80	3 98	2 38	80
3 74	2 24	40	3 99	2 39	40

sixty
pounds

*Prices of Grains, Roots and Products of sixty
pounds' weight to the bushel, showing their equivalent
per 100 pounds.*

bush.
c. m.
25 00
25 60
26 20
26 80
27 40
28 00
28 60
29 20
29 80
30 40
31 00
31 60
32 20
32 80
33 40
34 00
34 60
35 20
35 80
36 40
37 00
37 60
38 20
38 80
39 40

Per 100 lbs.	Per bush.	Per 100 lbs.	Per bush.
\$ c.	\$ c. m.	\$ c.	\$ c. m.
4 00	2 40 00	4 70	2 82 00
4 01	2 40 60	4 80	2 88 00
4 02	2 41 20	4 90	2 94 00
4 03	2 41 80	5 00	3 00 00
4 04	2 42 40	5 10	3 06 00
4 05	2 43 00	5 20	3 12 00
4 06	2 43 60	5 30	3 18 00
4 07	2 44 20	5 40	3 24 00
4 08	2 44 80	5 50	3 30 00
4 09	2 45 40	5 60	3 36 00
4 10	2 46 00	5 70	3 42 00
4 11	2 46 60	5 80	3 48 00
4 12	2 47 20	5 90	3 54 00
4 13	3 47 80	6 00	3 60 00
4 14	3 48 40	6 10	3 66 00
4 15	2 49 00	6 20	3 72 00
4 16	2 49 60	6 30	3 78 00
4 17	2 50 20	6 40	3 84 00
4 18	2 50 80	6 50	3 90 00
4 19	2 51 40	6 60	3 96 00
4 20	2 52 00	6 70	4 02 00
4 30	2 58 00	6 80	4 08 00
4 40	2 64 00	6 90	4 14 00
4 50	2 70 00	7 00	4 20 00
4 60	2 76 00	7 10	4 26 00

Prices of Grains, Roots and Products of sixty pounds' weight to the bushel, showing their equivalent per 100 pounds.

Per 100 lbs.	Per bush.	Per 100 lbs.	Per bush.
\$ c.	\$ c. m.	\$ c.	\$ c. m.
7 20	4 32 00	8 70	5 22 00
7 30	4 38 00	8 80	5 28 00
7 40	4 44 00	8 90	5 34 00
7 50	4 50 00	9 00	5 40 00
7 70	4 56 00	9 10	5 46 00
7 60	4 62 00	9 20	5 52 00
7 80	4 68 00	9 30	5 58 00
7 90	4 74 00	9 40	5 64 00
8 00	4 80 00	9 50	5 70 00
8 10	4 86 00	9 60	5 76 00
8 20	4 92 00	9 70	5 82 00
8 30	4 98 00	9 80	5 88 00
8 40	5 04 00	9 90	5 94 00
8 50	5 10 00	10 00	6 00 00
8 60	5 16 00		

Sixty cents on every additional hundred.

sixty
valent

*Prices of Grains, Roots and Products of fifty-six
pounds' weight to the bushel, showing their equivalent
per 100 pounds.*

bush.
c. m.
22 00
28 00
4 00
0 00
6 00
2 00
8 00
4 00
0 00
6 00
2 00
8 00
0 00
0 00

Per 100 lbs.	Per bush.	Per 100 lbs.	Per bush.
\$ c.	\$ c. m.	\$ c.	\$ c. m.
0 75	0 42 00	1 00	0 56 00
0 76	0 42 56	1 01	0 56 56
0 77	0 43 12	1 02	0 57 12
0 78	0 43 68	1 03	0 57 68
0 79	0 44 24	1 04	0 58 24
0 80	0 44 80	1 05	0 58 80
0 81	0 45 36	1 06	0 59 36
0 82	0 45 92	1 07	0 59 92
0 83	0 46 48	1 08	0 60 48
0 84	0 47 04	1 09	0 61 04
0 85	0 47 60	1 10	0 61 60
0 86	0 48 16	1 11	0 62 16
0 87	0 48 72	1 12	0 62 72
0 88	0 49 28	1 13	0 63 28
0 89	0 49 84	1 14	0 63 84
0 90	0 50 40	1 15	0 64 40
0 91	0 50 96	1 16	0 64 96
0 92	0 51 52	1 17	0 65 52
0 93	0 52 08	1 18	0 66 08
0 94	0 52 64	1 19	0 66 64
0 95	0 53 20	1 20	0 67 20
0 96	0 53 76	1 21	0 67 76
0 97	0 54 32	1 22	0 68 32
0 98	0 54 88	1 23	0 68 88
0 99	0 55 44	1 24	0 69 44

Prices of Grains, Roots and Products of fifty-six pounds' weight to the bushel, showing their equivalent per 100 pounds.

Per 100 lbs.		Per bush.		Per 100 lbs.		Per bush.	
\$	c.	\$	c. m.	\$	c.	\$	c. m.
1 25	0 70	00	1 50	0 84	00
1 26	0 70	56	1 51	0 84	56
1 27	0 71	12	1 52	0 85	12
1 28	0 71	68	1 53	0 85	68
1 29	0 72	24	1 54	0 86	24
1 30	0 72	80	1 55	0 86	80
1 31	0 73	36	1 56	0 87	36
1 32	0 73	92	1 57	0 87	92
1 33	0 74	48	1 58	0 88	48
1 34	0 75	04	1 59	0 89	04
1 35	0 75	60	1 60	0 89	60
1 36	0 76	16	1 61	0 90	16
1 37	0 76	72	1 62	0 90	72
1 38	0 77	28	1 63	0 91	28
1 39	0 77	84	1 64	0 91	84
1 40	0 78	40	1 65	0 92	40
1 41	0 78	96	1 66	0 92	96
1 42	0 79	52	1 67	0 93	52
1 43	0 80	08	1 68	0 94	08
1 44	0 80	64	1 69	0 94	64
1 45	0 81	20	1 70	0 95	20
1 46	0 81	76	1 71	0 95	76
1 47	0 82	32	1 72	0 96	32
1 48	0 82	88	1 73	0 96	88
1 49	0 83	44	1 74	0 97	44

fifty-six
equivalent

*Prices of Grains, Roots and Products of fifty-six
pounds' weight to the bushel, showing their equivalent
per 100 pounds.*

Per bush.

\$ c. m.
0 84 00
0 84 56
0 85 12
0 85 68
0 86 24
0 86 50
0 87 36
0 87 92
88 48
89 04
89 60
90 16
90 72
91 28
91 84
92 40
92 96
93 52
94 08
94 64
95 20
95 76
96 32
96 88
97 44

Per 100 lbs.

\$ c.	Per bush.
1 75	0 98 00
1 76	0 98 56
1 77	0 99 12
1 78	0 99 68
1 79	1 00 24
1 80	1 00 80
1 81	1 01 36
1 82	1 01 92
1 83	1 02 48
1 84	1 03 04
1 85	1 03 60
1 86	1 04 16
1 87	1 04 72
1 88	1 05 28
1 89	1 05 84
1 90	1 06 40
1 91	1 06 96
1 92	1 07 52
1 93	1 08 08
1 94	1 08 64
1 95	1 09 20
1 96	1 09 76
1 97	1 10 32
1 98	1 10 88
1 99	1 11 44

Per bush.

Per 100 lbs.

\$ c.	Per bush.
2 00	1 12 00
2 01	1 12 56
2 02	1 13 12
2 03	1 13 68
2 04	1 14 24
2 05	1 14 80
2 06	1 15 36
2 07	1 15 92
2 08	1 16 48
2 09	1 17 04
2 10	1 17 60
2 11	1 18 16
2 12	1 18 72
2 13	1 19 28
2 14	1 19 84
2 15	1 20 40
2 16	1 20 96
2 17	1 21 52
2 18	1 22 08
2 19	1 22 64
2 20	1 23 20
2 21	1 23 76
2 22	1 24 32
2 23	1 24 88
2 24	1 25 44

Prices of Grain, Roots and Products of fifty pounds' weight to the bushel, showing their equivalent per 100 pounds.

Per 100 lbs.	Per bush.	Per 100 lbs.	Per bush.
\$ c.	\$ c. m.	\$ c.	\$ c. m.
0 80	0 40 00	1 50	0 75 00
0 81	0 40 50	1 60	0 80 00
0 82	0 41 00	1 70	0 85 00
0 83	0 41 50	1 80	0 90 00
0 84	0 42 00	1 90	0 95 00
0 85	0 42 50	2 00	1 00 00
0 86	0 43 00	2 10	1 05 00
0 87	0 43 50	2 20	1 10 00
0 88	0 44 00	2 30	1 15 00
0 89	0 44 50	2 40	1 20 00
0 90	0 45 00	2 50	1 25 00
0 91	0 45 50	2 60	1 30 00
0 92	0 46 00	2 70	1 35 00
0 93	0 46 50	2 80	1 40 00
0 94	0 47 00	2 90	1 45 00
0 95	0 47 50	3 00	1 50 00
0 96	0 48 00	3 10	1 55 00
0 97	0 48 50	3 20	1 60 00
0 98	0 49 00	3 30	1 65 00
0 99	0 49 50	3 40	1 70 00
1 00	0 50 00	3 50	1 75 00
1 10	0 55 00	3 60	1 80 00
1 20	0 60 00	3 70	1 85 00
1 30	0 65 00	3 80	1 90 00
1 40	0 70 00	3 90	1 95 00

of fifty
equivalent

*Prices of Grains, Roots and Products of fifty
pounds' weight to the bushel, showing their equivalent
per 100 pounds.*

Per bush.	Per 100 lbs.	Per bush.	Per 100 lbs.	Per bush.
\$ c. m.	\$ c.	\$ c. m.	\$ c.	\$ c. m.
75 00	4 00	2 00 00	6 50	3 25 00
80 00	4 10	2 05 00	6 60	3 30 00
85 00	4 20	2 10 00	6 70	3 35 00
90 00	4 30	2 15 00	6 80	3 40 00
95 00	4 40	2 20 00	6 90	3 45 00
00 00	4 50	2 25 00	7 00	3 50 00
05 00	4 60	2 30 00	7 10	3 55 00
10 00	4 70	2 35 00	7 20	3 60 00
15 00	4 80	2 40 00	7 30	3 65 00
20 00	4 90	2 45 00	7 40	3 70 00
25 00	5 00	2 50 00	7 50	3 75 00
30 00	5 10	2 55 00	7 60	3 80 00
35 00	5 20	2 60 00	7 70	3 85 00
40 00	5 30	2 65 00	7 80	3 90 00
45 00	5 40	2 70 00	7 90	3 95 00
50 00	5 50	2 75 00	8 00	4 00 00
55 00	5 60	2 80 00	8 10	4 05 00
60 00	5 70	2 85 00	8 20	4 10 00
65 00	5 80	2 90 00	8 30	4 15 00
70 00	5 90	2 95 00	8 40	4 20 00
75 00	6 00	3 00 00	8 50	4 25 00
80 00	6 10	3 05 00	8 60	4 30 00
85 00	6 20	3 10 00	8 70	4 35 00
90 00	6 30	3 15 00	8 80	4 40 00
95 00	6 40	3 20 00	8 90	4 45 00

Prices of Grains, Roots and Products of forty-eight pounds' weight to the bushel, showing their equivalent per 100 pounds.

Per 100 lbs.	Per bush.	Per 100 lbs.	Per bush.
\$ c.	\$ c. m.	\$ c.	\$ c. m.
0 75	0 36 00	1 00	0 48 00
0 76	0 36 48	1 01	0 48 48
0 77	0 36 96	1 02	0 48 96
0 78	0 37 44	1 03	0 49 44
0 79	0 37 92	1 04	0 49 92
0 80	0 38 40	1 05	0 50 40
0 81	0 38 88	1 06	0 50 88
0 82	0 39 36	1 07	0 51 36
0 83	0 39 84	1 08	0 51 84
0 84	0 40 32	1 09	0 52 32
0 85	0 40 80	1 10	0 52 80
0 86	0 41 28	1 11	0 53 28
0 87	0 41 76	1 12	0 53 76
0 88	0 42 24	1 13	0 54 24
0 89	0 42 72	1 14	0 54 72
0 90	0 43 20	1 15	0 55 20
0 91	0 43 68	1 16	0 55 68
0 92	0 44 16	1 17	0 56 16
0 93	0 44 64	1 18	0 56 64
0 94	0 45 12	1 19	0 57 12
0 95	0 45 60	1 20	0 57 60
0 96	0 46 08	1 21	0 58 08
0 97	0 46 56	1 22	0 58 56
0 98	0 47 04	1 23	0 59 04
0 99	0 47 52	1 24	0 59 52

erty-eight
quivalent

*Prices of Grains, Roots and Products of forty-eight
pounds' weight to the bushel, showing their equivalent
per 100 pounds.*

Per bush.

\$ c. m.
0 48 00
0 48 48
0 48 96
0 49 44
0 49 92
0 50 40
0 50 88
0 51 36
0 51 84
0 52 32
0 52 80
0 53 28
0 53 76
0 54 24
0 54 72
0 55 20
0 55 68
0 56 16
0 56 64
0 57 12
0 57 60
0 58 08
0 58 56
0 59 04
0 59 52

Per 100 lbs.	Per bush.	Per 100 lbs.	Per bush.
\$ c. m.	\$ c. m.	\$ c. m.	\$ c. m.
1 25	0 60 00	1 50	0 72 00
1 26	0 60 48	1 51	0 72 48
1 27	0 60 96	1 52	0 72 96
1 28	0 61 44	1 53	0 73 44
1 29	0 61 92	1 54	0 73 92
1 30	0 62 40	1 55	0 74 40
1 31	0 62 88	1 56	0 74 88
1 32	0 63 36	1 57	0 75 36
1 33	0 63 84	1 58	0 75 84
1 34	0 64 32	1 59	0 76 32
1 35	0 64 80	1 60	0 76 80
1 36	0 65 28	1 61	0 77 28
1 37	0 65 76	1 62	0 77 76
1 38	0 66 24	1 63	0 78 24
1 39	0 66 72	1 64	0 78 72
1 40	0 67 20	1 65	0 79 20
1 41	0 67 68	1 66	0 79 68
1 42	0 68 16	1 67	0 80 16
1 43	0 68 64	1 68	0 80 64
1 44	0 69 12	1 69	0 81 12
1 45	0 69 60	1 70	0 81 60
1 46	0 70 08	1 71	0 82 08
1 47	0 70 56	1 72	0 82 56
1 48	0 71 04	1 73	0 83 04
1 49	0 71 52	1 74	0 83 52

Prices of Grains, Roots and Products of forty-eight pounds' weight to the bushel, showing their equivalent per 100 pounds.

Per 100 lbs.		Per bush.		Per 100 lbs.		Per bush.	
\$	c.	\$	c. m.	\$	c.	\$	c. m.
1	75	0	84 00	2	00	0	96 00
1	76	0	84 48	2	01	0	96 48
1	77	0	84 96	2	02	0	96 96
1	78	0	85 44	2	03	0	97 44
1	79	0	85 92	2	04	0	97 92
1	80	0	86 40	2	05	0	98 40
1	81	0	86 88	2	06	0	98 88
1	82	0	87 36	2	07	0	99 36
1	83	0	87 84	2	08	0	99 84
1	84	0	88 32	2	09	1	00 32
1	85	0	88 80	2	10	1	00 80
1	86	0	89 28	2	11	1	01 28
1	87	0	89 76	2	12	1	01 72
1	88	0	90 24	2	13	1	02 24
1	89	0	90 72	2	14	1	02 72
1	90	0	91 20	2	15	1	03 20
1	91	0	91 68	2	16	1	03 68
1	92	0	92 16	2	17	1	04 16
1	93	0	92 64	2	18	1	04 64
1	94	0	93 12	2	19	1	05 12
1	95	0	93 60	2	20	1	05 60
1	96	0	94 08	2	21	1	06 08
1	97	0	94 56	2	22	1	06 56
1	98	0	95 04	2	23	1	07 04
1	99	0	95 52	2	24	1	07 52

erty-eight
equivalent

*Prices of Grains, Roots and Products of forty-eight
pounds' weight to the bushel, showing their equivalent
per 100 pounds.*

er bush.

\$ c. m.
0 96 00
0 96 48
0 96 96
0 97 44
0 97 92
0 98 40
0 98 88
0 99 36
0 99 84
0 00 32
0 00 80
0 01 28
0 01 72
0 02 24
0 02 72
0 03 20
0 03 68
0 04 16
0 04 64
0 05 12
0 05 60
0 06 08
0 06 56
0 07 04
0 07 52

Per 100 lbs.	Per bush.	Per 100 lbs.	Per bush.
\$ c. m.	\$ c. m.	\$ c. m.	\$ c. m.
2 25	1 08 00	2 50	1 20 00
2 26	1 08 48	2 51	1 20 48
2 27	1 08 96	2 52	1 20 96
2 28	1 09 44	2 53	1 21 44
2 29	1 09 92	2 54	1 21 92
2 30	1 10 40	2 55	1 22 40
2 31	1 10 88	2 56	1 22 88
2 32	1 11 36	2 57	1 23 36
2 33	1 11 84	2 58	1 23 84
2 34	1 12 32	2 59	1 24 32
2 35	1 12 80	2 60	1 24 80
2 36	1 13 28	2 61	1 25 28
2 37	1 13 76	2 62	1 25 76
2 38	1 14 24	2 63	1 26 24
2 39	1 14 72	2 64	1 26 72
2 40	1 15 20	2 65	1 27 20
2 41	1 15 68	2 66	1 27 68
2 42	1 16 16	2 67	1 28 16
2 43	1 16 64	2 68	1 28 64
2 44	1 17 12	2 69	1 29 12
2 45	1 17 60	2 70	1 29 60
2 46	1 18 08	2 71	1 30 08
2 47	1 18 56	2 72	1 30 56
2 48	1 19 04	2 73	1 31 04
2 49	1 19 52	2 74	1 31 52

Prices of Grains, Roots and Products of forty-eight pounds' weight to the bushel, showing their equivalent per 100 pounds.

Per 100 lbs.		Per bush.		Per 100 lbs.		Per bush.	
\$	c.	\$	c. m.	\$	c.	\$	c. m.
2 75	...	1 32	00	3 00	1 44	00
2 76	1 32	48	3 01	1 44	48
2 77	1 32	96	3 02	1 44	96
2 78	1 33	44	3 03	1 45	44
2 79	1 33	92	3 04	1 45	92
2 80	1 34	40	3 05	1 46	40
2 81	1 34	88	3 06	1 46	88
2 82	1 35	36	3 07	1 47	36
2 83	1 35	84	3 08	1 47	84
2 84	1 36	32	3 09	1 48	32
2 85	1 36	80	3 10	1 48	80
2 86	1 37	28	3 11	1 49	28
2 87	1 37	76	3 12	1 49	76
2 88	1 38	24	3 13	1 50	24
2 89	1 38	72	3 14	1 50	72
2 90	1 39	20	3 15	1 51	20
2 91	1 39	68	3 16	1 51	68
2 92	1 40	16	3 17	1 52	16
2 93	1 40	64	3 18	1 52	64
2 94	1 41	12	3 19	1 53	12
2 95	1 41	60	3 20	1 53	60
2 96	1 42	08	3 21	1 54	08
2 97	1 42	56	3 22	1 54	56
2 98	1 43	04	3 23	1 55	04
2 99	1 43	52	3 24	1 55	52

Per
Pe.

Per
\$
3 :
3 :
3 4
3 5
3 6
3 7
3 8
3 9
4 0
4 1
4 2
4 3
4 4
4 5
4 6
4 7
4 8
4 9
5 0
5 1
5 2
5 3
5 4
5 5
5 6

forty-eight
equivalent

*Prices of Grains, Roots and Products of forty-eight
Pounds' weight to the bushel, showing their equivalent
Per 100 pounds.*

Per bush.
\$ c. m.
1 44 00
1 44 48
1 44 96
1 45 44
1 45 92
1 46 40
1 46 88
1 47 36
1 47 84
1 48 32
1 48 80
1 49 28
1 49 76
50 24
50 72
51 20
51 68
52 16
52 64
53 12
53 60
54 08
54 56
55 04
55 52

Per 100 lbs.	Per bush.
\$ c.	\$ c. m.
3 25	1 56 00
3 30	1 58 40
3 40	1 63 20
3 50	1 68 00
3 60	1 72 80
3 70	1 77 60
3 80	1 82 40
3 90	1 87 20
4 00	1 92 00
4 10	1 96 80
4 20	2 01 60
4 30	2 06 40
4 40	2 11 20
4 50	2 16 00
4 60	2 20 80
4 70	2 25 60
4 80	2 30 40
4 90	2 35 20
5 00	2 40 00
5 10	2 44 80
5 20	2 49 60
5 30	2 54 40
5 40	2 59 20
5 50	2 64 00
5 60	2 68 80

Per 100 lbs.	Per bush.
\$ c.	\$ c. m.
5 75	2 76 00
6 00	2 88 00
6 25	3 00 00
6 50	3 12 00
6 75	3 24 00
7 00	3 36 00
7 25	3 48 00
7 50	3 60 00
7 75	3 72 00
8 00	3 88 00
8 25	4 00 00
8 50	4 12 00
8 75	4 24 00
9 00	4 36 00
9 25	4 48 00
9 50	4 60 00
9 75	4 72 00
10 00	4 88 00
10 25	5 00 00
10 50	5 12 00
10 75	5 24 00
11 00	5 36 00
11 25	5 48 00
11 50	5 60 00
11 75	5 72 00

Prices of Grains, Roots and Products of forty-four pounds' weight to the bushel, showing their equivalent per 100 pounds.

Per 100 lbs.	Per bush.	Per 100 lbs.	Per bush.
\$ c.	\$ c. m.	\$ c.	\$ c. m.
2 50	1 10 00	3 75	1 65 00
2 55	1 12 20	3 80	1 67 20
2 60	1 14 40	3 85	1 69 40
2 65	1 16 60	3 90	1 71 60
2 70	1 18 80	3 95	1 73 80
2 75	1 21 00	4 00	1 76 00
2 80	1 23 20	4 05	1 78 20
2 85	1 25 40	4 10	1 80 40
2 90	1 27 60	4 15	1 82 60
2 95	1 29 80	4 20	1 84 80
3 00	1 32 00	4 25	1 87 00
3 05	1 34 20	4 30	1 89 20
3 10	1 36 40	4 35	1 91 40
3 15	1 38 60	4 40	1 93 60
3 20	1 40 80	4 45	1 95 80
3 25	1 43 00	4 50	1 98 00
3 30	1 45 20	4 55	2 00 20
3 35	1 47 40	4 60	2 02 40
3 40	1 49 60	4 65	2 04 60
3 45	1 51 80	4 70	2 06 80
3 50	1 54 00	4 75	2 09 00
3 55	1 56 20	4 80	2 11 20
3 60	1 58 40	4 85	2 13 40
3 65	1 60 60	4 90	2 15 60
3 70	1 62 80	4 95	2 17 80

erty-four
equivalent

Prices of Grains, Roots and Products of forty-four pounds' weight to the bushel, showing their equivalent per 100 pounds.

er bush.
\$ c. m.
1 65 00
1 67 20
1 69 40
71 60
73 80
76 00
78 20
80 40
82 60
84 80
87 00
89 20
91 40
93 60
95 80
98 00
00 20
02 40
04 60
06 80
09 00
11 20
13 40
15 60
17 80

Per 100 lbs.	Per bush.
\$ c.	\$ c. m.
5 00	2 20 00
5 10	2 24 40
5 20	2 28 80
5 30	2 33 20
5 40	2 37 60
5 50	2 42 00
5 60	2 46 40
5 70	2 50 80
5 80	2 55 20
5 90	2 59 60
6 00	2 64 00
6 10	2 68 40
6 20	2 72 80
6 30	2 77 20
6 40	2 81 60
6 50	2 86 00
6 60	2 90 40
6 70	2 94 80
6 80	2 99 20
6 90	3 03 60
7 00	3 08 00
7 10	3 12 40
7 20	3 16 80
7 30	3 21 20
7 40	3 25 60

Per 100 lbs.	Per bush.
\$ c.	\$ c. m.
7 50	2 30 00
7 60	3 34 40
7 70	3 38 80
7 80	3 43 20
7 90	3 47 60
8 00	3 52 00
8 10	3 56 40
8 20	3 60 80
8 30	3 65 20
8 40	3 69 60
8 50	3 74 00
8 60	3 78 40
8 70	3 82 80
8 80	3 87 20
8 90	3 91 60
9 00	3 96 00
9 10	4 00 40
9 20	4 04 80
9 30	4 09 20
9 40	4 13 60
9 50	4 18 00
9 60	4 22 40
9 70	4 26 80
9 80	4 31 20
9 90	4 35 60

Prices of Grains, Roots and Products of thirty-four pounds' weight to the bushel, showing their equivalent per 100 pounds.

Per 100 lbs.	Per bush.	Per 100 lbs.	Per bush.
\$ c.	\$ c. m.	\$ c.	\$ c. m.
0 44	0 14 96	0 69	0 23 46
0 45	0 15 30	0 70	0 23 80
0 46	0 15 64	0 71	0 24 14
0 47	0 15 98	0 72	0 24 48
0 48	0 16 32	0 73	0 24 82
0 49	0 16 66	0 74	0 25 16
0 50	0 17 00	0 75	0 25 50
0 51	0 17 34	0 76	0 25 84
0 52	0 17 68	0 77	0 26 18
0 53	0 18 02	0 78	0 26 52
0 54	0 18 36	0 79	0 26 86
0 55	0 18 70	0 80	0 27 20
0 56	0 19 04	0 81	0 27 54
0 57	0 19 38	0 82	0 27 88
0 58	0 19 72	0 83	0 28 22
0 59	0 20 06	0 84	0 28 56
0 60	0 20 40	0 85	0 28 90
0 61	0 20 74	0 86	0 29 24
0 62	0 21 08	0 87	0 29 58
0 63	0 21 42	0 88	0 29 92
0 64	0 21 76	0 89	0 30 26
0 65	0 22 10	0 90	0 30 60
0 66	0 22 44	0 91	0 30 94
0 67	0 22 78	0 92	0 31 28
0 68	0 23 12	0 93	0 31 62

*f thirty-four
r equivalent*

*Prices of Grains, Roots and Products of thirty-four
pounds' weight to the bushel, showing their equivalent
per 100 pounds.*

Per bush.
\$ c. m.
0 23 46
0 23 80
0 24 14
0 24 48
0 24 82
0 25 16
0 25 50
0 25 84
0 26 18
0 26 52
0 26 86
0 27 20
0 27 54
0 27 88
0 28 22
0 28 56
0 28 90
0 29 24
0 29 58
0 29 92
0 30 26
0 30 60
0 30 94
0 31 28
0 31 62

Per 100 lbs.	Per bush.	Per 100 lbs.	Per bush.
\$ c.	\$ c. m.	\$ c.	\$ c. m.
0 94	0 31 96	1 19	0 40 46
0 95	0 32 30	1 20	0 40 80
0 96	0 32 64	1 21	0 41 14
0 97	0 32 98	1 22	0 41 48
0 98	0 33 32	1 23	0 41 82
0 99	0 33 66	1 24	0 42 16
1 00	0 34 00	1 25	0 42 50
1 01	0 34 34	1 26	0 42 84
1 02	0 34 68	1 27	0 43 18
1 03	0 35 02	1 28	0 43 52
1 04	0 35 36	1 29	0 43 86
1 05	0 35 70	1 30	0 44 20
1 06	0 36 04	1 31	0 44 54
1 07	0 36 38	1 32	0 44 88
1 08	0 36 72	1 33	0 45 22
1 09	0 37 06	1 34	0 45 56
1 10	0 37 40	1 35	0 45 90
1 11	0 37 74	1 36	0 46 24
1 12	0 38 08	1 37	0 46 58
1 13	0 38 42	1 38	0 46 92
1 14	0 38 76	1 39	0 47 26
1 15	0 39 10	1 40	0 47 60
1 16	0 39 44	1 41	0 47 94
1 17	0 39 78	1 42	0 48 28
1 18	0 40 12	1 43	0 48 62

Prices of Grains, Roots and Products of thirty-four pounds' weight to the bushel, showing their equivalent per 100 pounds.

Per 100 lbs.		Per bush.		Per 100 lbs.		Per bush.	
\$	c.	\$	c. m.	\$	c.	\$	c. m.
1 44	0 48	96	1 69	0 57	46
1 45	0 49	30	1 70	0 57	80
1 46	0 49	64	1 71	0 58	14
1 47	0 49	98	1 72	0 58	48
1 48	..	0 50	32	1 73	0 58	82
1 49	0 50	66	1 74	0 59	16
1 50	0 51	00	1 75	0 59	50
1 51	0 51	34	1 76	0 59	84
1 52	0 51	68	1 77	0 60	18
1 53	0 52	02	1 78	0 60	52
1 54	0 52	36	1 79	..	0 60	86
1 55	0 52	70	1 80	0 61	20
1 56	0 53	04	1 81	0 61	54
1 57	0 53	38	1 82	0 61	88
1 58	0 53	72	1 83	0 62	22
1 59	..	0 54	06	1 84	0 62	56
1 60	0 54	40	1 85	0 62	90
1 61	0 54	74	1 86	0 63	24
1 62	0 55	08	1 87	0 63	58
1 63	0 55	42	1 88	0 63	92
1 64	0 55	76	1 89	0 64	26
1 65	0 56	10	1 90	0 64	60
1 66	0 56	44	1 91	0 64	94
1 67	0 56	78	1 92	0 65	28
1 68	0 57	12	1 93	..	0 65	62

thirty-four
equivalent

*Prices of Grains, Roots and Products of thirty-four
pounds' weight to the bushel, showing their equivalent
per 100 pounds.*

Per bush.
\$ c. m.
0 57 46
0 57 80
0 58 14
0 58 48
0 58 82
0 59 16
0 59 50
0 59 84
0 60 18
0 60 52
0 60 86
0 61 20
0 61 54
0 61 88
0 62 22
0 62 56
0 62 90
0 63 24
0 63 58
0 63 92
0 64 26
0 64 60
0 64 94
0 65 28
0 65 62

Per 100 lbs.	Per bush.
\$ c.	\$ c. m.
1 94	0 65 96
1 95	0 66 30
1 96	0 66 64
1 97	0 66 98
1 98	0 67 32
1 99	0 67 66
2 00	0 68 00
2 01	0 68 34
2 02	0 68 68
2 03	0 69 02
2 04	0 69 36
2 05	0 69 70
2 06	0 70 04
2 07	0 70 38
2 08	0 70 72
2 09	0 71 06
2 10	0 71 40
2 11	0 71 74
2 12	0 72 08
2 13	0 72 42
2 14	0 72 76
2 15	0 73 10
2 16	0 73 44
2 17	0 73 78
2 18	0 74 12

Per 100 lbs.	Per bush.
\$ c.	\$ c. m.
2 19	0 74 46
2 20	0 74 80
2 21	0 75 14
2 22	0 75 48
2 23	0 75 82
2 24	0 76 16
2 25	0 76 50
2 26	0 76 84
2 27	0 77 18
2 28	0 77 52
2 29	0 77 86
2 30	0 78 20
2 31	0 78 54
2 32	0 78 88
2 33	0 79 22
2 34	0 79 56
2 35	0 79 90
2 36	0 80 24
2 37	0 80 58
2 38	0 80 92
2 39	0 81 26
2 40	0 81 60
2 41	0 81 94
2 42	0 82 28
2 43	0 82 62

Dried Peaches, thirty-three pounds' weight to the bushel.

Per 100 lbs.	Per bush.
\$ c.	\$ c. m.
4 50	1 48 50
4 75	1 56 75
5 00	1 65 00
5 25	1 73 25
5 50	1 81 50
5 75	1 89 75
6 00	1 98 00
6 25	2 06 25
6 50	2 14 50
6 75	2 22 75
7 00	2 31 00
7 25	2 39 25
7 50	2 47 50
7 75	2 55 75
8 00	2 64 00
8 25	2 72 25
8 50	2 80 50
8 75	2 88 75
9 00	2 97 00
9 25	3 05 25
9 50	3 13 50
9 75	3 21 75
10 00	3 30 00
10 25	3 38 25
10 50	3 46 50

Dried Apples, twenty-two pounds' weight to the bushel.

Per 100 lbs.	Per bush.
\$ c.	\$ c. m.
5 00	1 10 00
5 25	1 15 50
5 50	1 21 00
5 75	1 26 50
6 00	1 32 00
6 25	1 37 50
6 50	1 43 00
6 75	1 48 50
7 00	1 54 00
7 25	1 59 50
7 50	1 65 00
7 75	1 70 50
8 00	1 76 00
8 25	1 81 50
8 50	1 87 00
8 75	1 92 50
9 00	1 98 00
9 25	2 03 50
9 50	2 09 00
9 75	2 14 50
10 00	2 20 00
10 25	2 25 50
10 50	2 31 00
10 75	2 36 50
11 00	2 42 00

enty-
to the

bush.

2. m.

0 00

5 50

1 00

6 50

2 00

7 50

3 00

8 50

4 00

9 50

5 00

0 50

6 00

50

00

50

00

50

00

50

00

50

00

50

00



