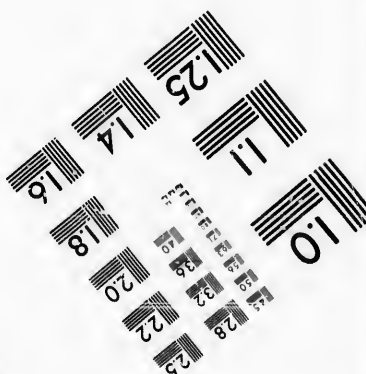


6"



Photographic Sciences Corporation

23 WEST MAIN STREET
WEBSTER, N.Y. 14580
(716) 872-4503

**CIHM/ICMH
Microfiche
Series.**

**CIHM/ICMH
Collection de
microfiches.**



Canadian Institute for Historical Microreproductions / Institut canadien de microreproductions historiques

© 1987

Technical and Bibliographic Notes/Notes techniques et bibliographiques

The Institute has attempted to obtain the best original copy available for filming. Features of this copy which may be bibliographically unique, which may alter any of the images in the reproduction, or which may significantly change the usual method of filming, are checked below.

L'Institut a microfilmé le meilleur exemplaire qu'il lui a été possible de se procurer. Les détails de cet exemplaire qui sont peut-être uniques du point de vue bibliographique, qui peuvent modifier une image reproduite, ou qui peuvent exiger une modification dans la méthode normale de filmage sont indiqués ci-dessous.

- ☐ Coloured covers/
Couverture de couleur
- ☐ Covers damaged/
Couverture endommagée
- ☐ Covers restored and/or laminated/
Couverture restaurée et/ou pelliculée
- ☐ Cover title missing/
Le titre de couverture manque
- ☐ Coloured maps/
Cartes géographiques en couleur
- ☐ Coloured ink (i.e. other than blue or black)/
Encre de couleur (i.e. autre que bleue ou noire)
- ☐ Coloured plates and/or illustrations/
Planches et/ou illustrations en couleur
- ☐ Bound with other material/
Relié avec d'autres documents
- ☐ Tight binding may cause shadows or distortion
along interior margin/
La reliure serrée peut causer de l'ombre ou de la
distorsion le long de la marge intérieure
- ☐ Blank leaves added during restoration may
appear within the text. Whenever possible, these
have been omitted from filming/
Il se peut que certaines pages blanches ajoutées
lors d'une restauration apparaissent dans le texte,
mais, lorsque cela était possible, ces pages n'ont
pas été filmées.
- ☒ Additional comments:/ [Printed ephemera] [4] p.
Commentaires supplémentaires:

- ☒ Coloured pages/
Pages de couleur
- ☐ Pages damaged/
Pages endommagées
- ☐ Pages restored and/or laminated/
Pages restaurées et/ou pelliculées
- ☐ Pages discoloured, stained or foxed/
Pages décolorées, tachetées ou piquées
- ☐ Pages detached/
Pages détachées
- ☒ Showthrough/
Transparence
- ☐ Quality of print varies/
Qualité inégale de l'impression
- ☐ Includes supplementary material/
Comprend du matériel supplémentaire
- ☐ Only edition available/
Seule édition disponible
- ☐ Pages wholly or partially obscured by errata
slips, tissues, etc., have been refilmed to
ensure the best possible image/
Les pages totalement ou partiellement
obscurcies par un feuillet d'errata, une pelure,
etc., ont été filmées à nouveau de façon à
obtenir la meilleure image possible.

This item is filmed at the reduction ratio checked below/
Ce document est filmé au taux de réduction indiqué ci-dessous.

10X	12X	14X	16X	18X	20X	22X	24X	26X	28X	30X	32X
						<input checked="" type="checkbox"/>					

The copy filmed here has been reproduced thanks to the generosity of:

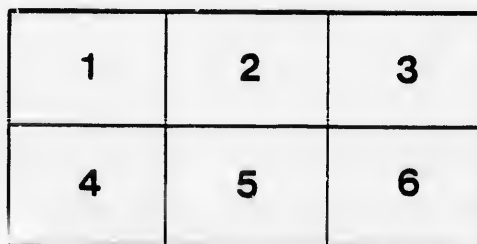
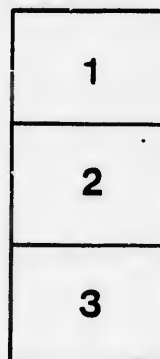
D. B. Weldon Library
University of Western Ontario
(Regional History Room)

The images appearing here are the best quality possible considering the condition and legibility of the original copy and in keeping with the filming contract specifications.

Original copies in printed paper covers are filmed beginning with the front cover and ending on the last page with a printed or illustrated impression, or the back cover when appropriate. All other original copies are filmed beginning on the first page with a printed or illustrated impression, and ending on the last page with a printed or illustrated impression.

The last recorded frame on each microfiche shell contain the symbol \longrightarrow (meaning "CONTINUED"), or the symbol ∇ (meaning "END"), whichever applies.

Maps, plates, charts, etc., may be filmed at different reduction ratios. Those too large to be entirely included in one exposure are filmed beginning in the upper left hand corner, left to right and top to bottom, as many frames as required. The following diagrams illustrate the method:



L'exemplaire filmé fut reproduit grâce à la générosité de:

D. B. Weldon Library
University of Western Ontario
(Regional History Room)

Les images suivantes ont été reproduites avec le plus grand soin, compte tenu de la condition et de la netteté de l'exemplaire filmé, et en conformité avec les conditions du contrat de filmage.

Les exemplaires originaux dont le couvercle en papier est imprimé sont filmés en commençant par le premier plat et en terminant soit par la dernière page qui comporte une empreinte d'impression ou d'illustration, soit par le second plat, selon le cas. Tous les autres exemplaires originaux sont filmés en commençant par la première page qui comporte une empreinte d'impression ou d'illustration et en terminant par la dernière page qui comporte une telle empreinte.

Un des symboles suivants apparaîtra sur la dernière image de chaque microfiche, selon le cas: le symbole \longrightarrow signifie "À SUIVRE", le symbole ∇ signifie "FIN".

Les cartes, planches, tableaux, etc., peuvent être filmés à des taux de réduction différents. Lorsque le document est trop grand pour être reproduit en un seul cliché, il est filmé à partir de l'angle supérieur gauche, de gauche à droite, et de haut en bas, en prenant le nombre d'images nécessaire. Les diagrammes suivants illustrent la méthode.

ONE OF THE MOST USEFUL AGRICULTURAL
IMPLEMENTS.



—EAGLE—
Sulky Harrow Company.

THE Eagle Sulky Harrow Company, of Brantford, Ont., have practically the best and cheapest Harrow in the market, constructed upon an entirely new and simple plan. Light Draft, no Walking, no Loading or Unloading to transport from field to field, as it can be raised entirely off the ground whenever desired by simply using the levers. This, too, can be done from the driver's seat to relieve the Harrow from clogs and those numerous obstructions so common to rough soil. It is constructed of the very best material in the market, Solid Steel Teeth in Every Harrow, and Solid Steel Spokes in Every Wheel, and is designed to fill a long felt want in the agricultural world, as it is a well known fact that the present cumbersome and altogether unsatisfactory Harrow is unable to do the necessary work, and is altogether unworthy of the age in which we live. It is as far in advance of the present Harrow in use as the latest improved binder is in advance of the old-

TESTIMONIALS.



DÉCEWVILLE, ONT., April 23rd, 1889

Eagle Sulky Harrow Company.

GENTLEMEN,—I have given your Harrow a good trial, and must say that it does excellent work and is very light in draft, and I shall be pleased to recommend it to any one that needs a Harrow, and you are at liberty to use my name in any way you see fit in connection with the introduction of these Harrows, for they are worthy of success.

ALONZO YOUNG.

BRANTFORD, ONT., April 15th, 1889

GENTLEMEN,—I have tried your Harrow and find it satisfactory and can heartily recommend it to any one in need of such an implement. It will perform all you claim for it, and you should meet with the success it deserves. With best wishes, I remain,

Yours truly, J. Y. BROWN.

Eagle Sulky Harrow Company, Brantford, Ont.

AMELIASBURG, May 1st, 1889

I want seven of your Harrows at once. I have tested your Harrow pretty well; and it gives every satisfaction.

DAVID GIBSON.

HICKORY DELL FARM, YORK, April 26th, 1889

This is to certify that I have thoroughly tested the Eagle Sulky Harrow and find it satisfactory in every particular, and all it was recommended to be. There is no Harrow in the market that can compare with it in any way for draft or work, and I can heartily recommend it to any farmer wanting a good useful implement.

W. A. ANDERSON, York.

OX BOW FARM, May 23rd 1889

GENTLEMEN,—

Your Harrow does its work well and I am satisfied the principle is a good one and will demonstrate what you claim for it. It is light in draft and very easily transported from place to place with safety to team and driver,

Yours truly,

JOHN HOPE.

MOHAWK INSTITUTE FARM, May 23rd, 1889

GENTLEMEN,—

Your Harrow works well, and is a grand improvement upon the old harrow. The principle is a good one, and will, I am confident, give good satisfaction, as the one I use demonstrates and is so easily moved from place without injury to harrow or to horses.

Yours truly, (REV.) R. ASHTON,
Principal

TESTIMONIALS.

YORK, ONT., April 25th, 1889

To the Eagle Sulky Harrow Company, Brantford, Ont.

GENTLEMEN,—I am satisfied with your Harrow, and can assure you that it does good work and is easily handled. My colts seem to draw it even easier than the old harrow, and I consider it quite safe to brake in young horses with, in fact the best arrangement for that purpose I ever saw. I have been showing it to my neighbors and believe you can sell quite a number in this neighborhood. I have no objections to your using my name, as having tested and used your Harrow with entire satisfaction and will heartily recommend it.

RICHARD WEIR.

CROWLAND, April 27th, 1889

Eagle Sulky Harrow Company, Brantford, Ont.

GENTLEMEN,—We have been trying one of your Sulky Harrows sold by H. J. Gonder, and it really works like a charm. We find it very convenient to convey from one part of the farm to another and much more safe to trust a team with in the hands of a green farm hand or boy. The ease and convenience in turning around and facilities for keeping the harrow from clogging is actually a decided success.

Yours truly,

ALEX. J. MCALPINE & SONS.

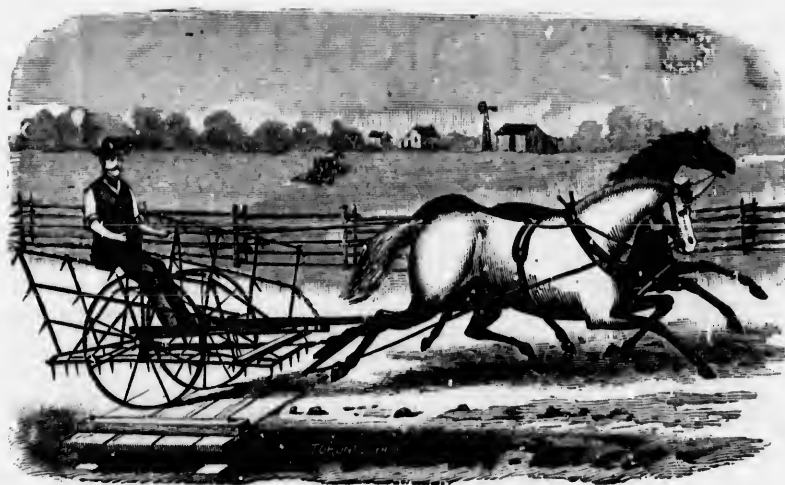
OTTERVILLE, June 3rd 1889

TO THE FARMING COMMUNITY OR WHOM IT MAY CONCERN :—

This is to say that I bought one of the Eagle Sulky Harrows of Mr. E. Butler, Agent for the Eagle Sulky Harrow Co., at Norwich, and after giving it a thorough trial on a hard lumpy clay soil, also on a tough clay sod, I do conscientiously recommend it to my brother farmers, and safely assert that it is the best harrow in use and an implement that will give satisfaction wherever used—aside of its capacity to pulverize the soil, you can ride with ease and do a big day's harrowing without being tired out, as would be the case with other harrows. I have been very lame with rheumatism for the last five years and not able to do harrowing with the floating harrow, but with the Eagle Sulky Harrow I can do ten to twelve acres per day with perfect ease, in fact it is a pleasure to run it, and when you have finished one lot you have no uncoupling and loading to do, but can fold it up inside of a minute from your seat by using the lever, and if there is a shower coming up you can let the horses whirl you to shelter in a giffie Try it. Every farmer will be sure to have one in time.

F. COMFORT.

To the Eagle Sulky Harrow Company, Brantford, Ont.



fashioned sickle. Past attempts to remedy this has brought out many other altogether unnecessary and expensive implements.

The above cuts show this Harrow both in the working and travelling positions. The great danger of leaving teams attached to Harrows or in turning around is entirely overcome by this invention, and any child capable of driving a team can do as much work with this implement as a full grown person, and that too without wearisome trudging that has always been necessary with the old kind.

The Harrow can be extended to almost any size and is very light in draft.

We are desirous of securing a good reliable Agent in every Township to exhibit and sell this necessity.

To see it is all that is necessary in order to sell it to any intelligent farmer.

EAGLE SULKY HARROW CO.

Brantford, Ont.

GENTLEMEN,—

We request that you give the above circular your special consideration, as it is decidedly to your advantage to do so.

