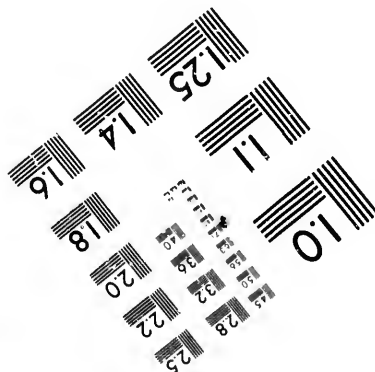
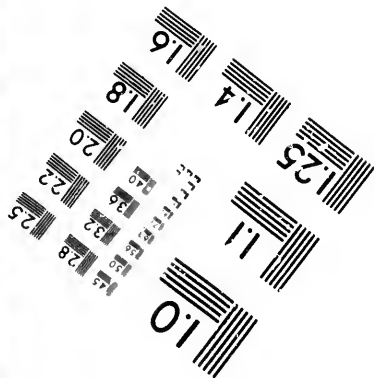
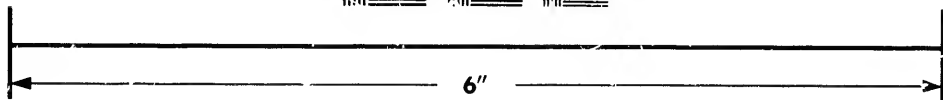
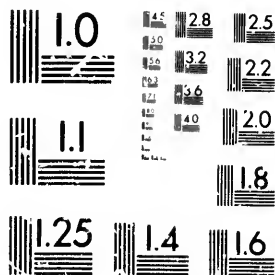


**IMAGE EVALUATION  
TEST TARGET (MT-3)**



**Photographic  
Sciences  
Corporation**

23 WEST MAIN STREET  
WEBSTER, N.Y. 14580  
(716) 872-4503

24 28 25  
32 22  
20

**CIHM/ICMH  
Microfiche  
Series.**

**CIHM/ICMH  
Collection de  
microfiches.**



Canadian Institute for Historical Microreproductions / Institut canadien de microreproductions historiques

01

**© 1981**

Technical and Bibliographic Notes/Notes techniques et bibliographiques

The Institute has attempted to obtain the best original copy available for filming. Features of this copy which may be bibliographically unique, which may alter any of the images in the reproduction, or which may significantly change the usual method of filming, are checked below.

L'Institut a microfilmé le meilleur exemplaire qu'il lui a été possible de se procurer. Les détails de cet exemplaire qui sont peut-être uniques du point de vue bibliographique, qui peuvent modifier une image reproduite, ou qui peuvent exiger une modification dans la méthode normale de filmage sont indiqués ci-dessous.

- Coloured covers/  
Couvertures de couleur
- Covers damaged/  
Couverture endommagée
- Covers restored and/or laminated/  
Couverture restaurée et/ou pelliculée
- Cover title missing/  
Le titre de couverture manque
- Coloured maps/  
Cartes géographiques en couleur
- Coloured ink (i.e. other than blue or black)/  
Encre de couleur (i.e. autre que bleue ou noire)
- Coloured plates and/or illustrations/  
Planches et/ou illustrations en couleur
- Bound with other material/  
Relié avec d'autres documents
- Tight binding may cause shadows or distortion along interior margin/  
La reliure serrée peut causer de l'ombre ou de la distortion le long de la marge intérieure
- Blank leaves added during restoration may appear within the text. Whenever possible, these have been omitted from filming/  
Il se peut que certaines pages blanches ajoutées lors d'une restauration apparaissent dans le texte, mais, lorsque cela était possible, ces pages n'ont pas été filmées.
- Additional comments:/  
Commentaires supplémentaires:

- Coloured pages/  
Pages de couleur
- Pages damaged/  
Pages endommagées
- Pages restored and/or laminated/  
Pages restaurées et/ou pelliculées
- Pages discoloured, stained or foxed/  
Pages décolorées, tachetées ou piquées
- Pages detached/  
Pages détachées
- Showthrough/  
Transparence
- Quality of print varies/  
Qualité inégale de l'impression
- Includes supplementary material/  
Comprend du matériel supplémentaire
- Only edition available/  
Seule édition disponible
- Pages wholly or partially obscured by errata slips, tissues, etc., have been refilmed to ensure the best possible image/  
Les pages totalement ou partiellement obscurcies par un feuillet d'errata, une pelure, etc., ont été filmées à nouveau de façon à obtenir la meilleure image possible.

This item is filmed at the reduction ratio checked below/  
Ce document est filmé au taux de réduction indiqué ci-dessous.

10X	14X	18X	22X	26X	30X
<input type="checkbox"/>	<input checked="" type="checkbox"/>	<input type="checkbox"/>	<input type="checkbox"/>	<input type="checkbox"/>	<input type="checkbox"/>
12X	16X	20X	24X	28X	32X

The copy filmed here has been reproduced thanks to the generosity of:

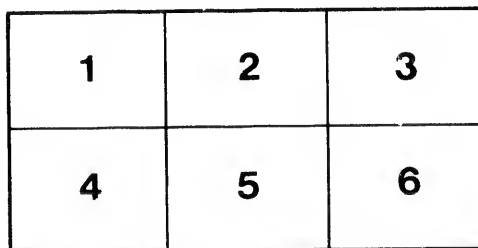
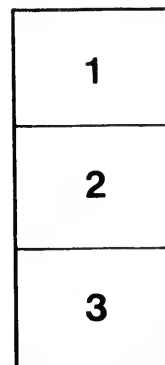
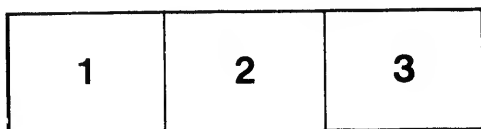
National Library of Canada

The images appearing here are the best quality possible considering the condition and legibility of the original copy and in keeping with the filming contract specifications.

Original copies in printed paper covers are filmed beginning with the front cover and ending on the last page with a printed or illustrated impression, or the back cover when appropriate. All other original copies are filmed beginning on the first page with a printed or illustrated impression, and ending on the last page with a printed or illustrated impression.

The last recorded frame on each microfiche shall contain the symbol  $\rightarrow$  (meaning "CONTINUED"), or the symbol  $\nabla$  (meaning "END"), whichever applies.

Maps, plates, charts, etc., may be filmed at different reduction ratios. Those too large to be entirely included in one exposure are filmed beginning in the upper left hand corner, left to right and top to bottom, as many frames as required. The following diagrams illustrate the method:



L'exemplaire filmé fut reproduit grâce à la générosité de:

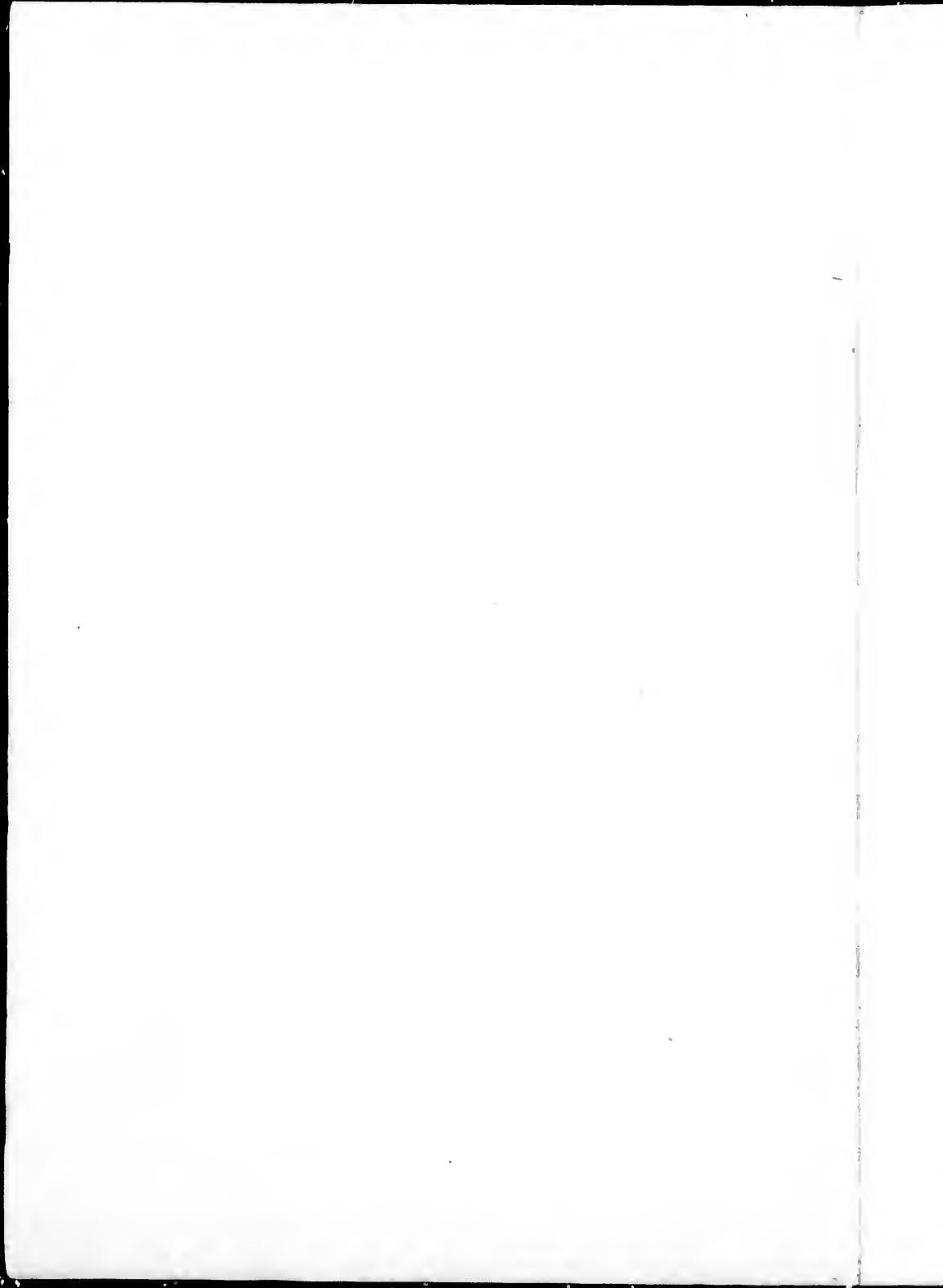
Bibliothèque nationale du Canada

Les images suivantes ont été reproduites avec le plus grand soin, compte tenu de la condition et de la netteté de l'exemplaire filmé, et en conformité avec les conditions du contrat de filmage.

Les exemplaires originaux dont la couverture en papier est imprimée sont filmés en commençant par le premier plat et en terminant soit par la dernière page qui comporte une empreinte d'impression ou d'illustration, soit par le second plat, selon le cas. Tous les autres exemplaires originaux sont filmés en commençant par la première page qui comporte une empreinte d'impression ou d'illustration et en terminant par la dernière page qui comporte une telle empreinte.

Un des symboles suivants apparaîtra sur la dernière image de chaque microfiche, selon le cas: le symbole  $\rightarrow$  signifie "A SUIVRE", le symbole  $\nabla$  signifie "FIN".

Les cartes, planches, tableaux, etc., peuvent être filmés à des taux de réduction différents. Lorsque le document est trop grand pour être reproduit en un seul cliché, il est filmé à partir de l'angle supérieur gauche, de gauche à droite, et de haut en bas, en prenant le nombre d'images nécessaire. Les diagrammes suivants illustrent la méthode.



T

TORONTO

AS  
SEEN  
FROM  
THE

STREET CARS

A PASSENGER SOUVENIR  
FOR  
VISITORS AND RESIDENTS  
OF TORONTO

Distributed with the Compliments of  
THE TORONTO RAILWAY COMPANY

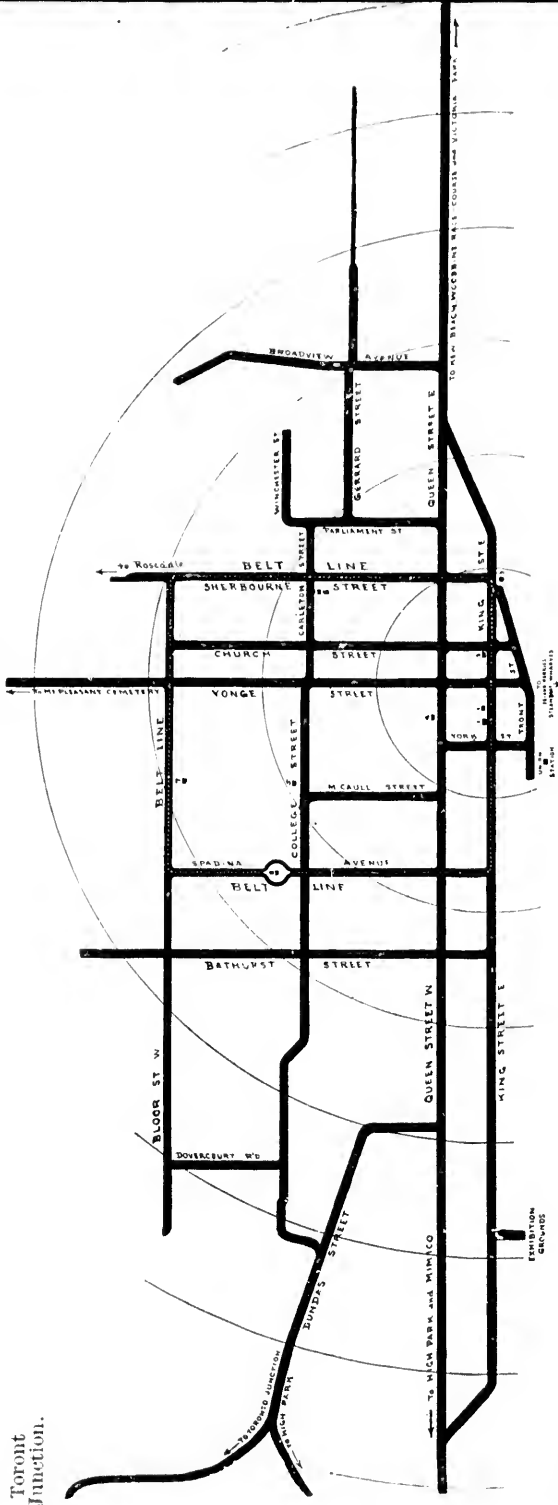
1894

Copyrighted—Chas. E. A. Carr.

---

MURRAY PRINTING COMPANY  
TORONTO

North Toronto.



Toronto Junction.

Woodbine  
Kew Beach  
Victoria Park

MAP OF THE TORONTO RAILWAY COMPANY'S SYSTEM.

High Park,  
Humber,  
Minico.

**THE TORONTO RAILWAY COMPANY**

**TORONTO, CANADA.**

**CAPITAL STOCK - \$6,000,000**

**WM. MCKENZIE, President**

**H. A. EVERETT, Vice-President**

**J. C. GRACE, Secretary-Treasurer**

**J. M. SMITH, Comptroller**

**JAMES GUNN, Superintendent**

**W. E. DAVIS, Electrical Engineer**

**HEAD OFFICES:**

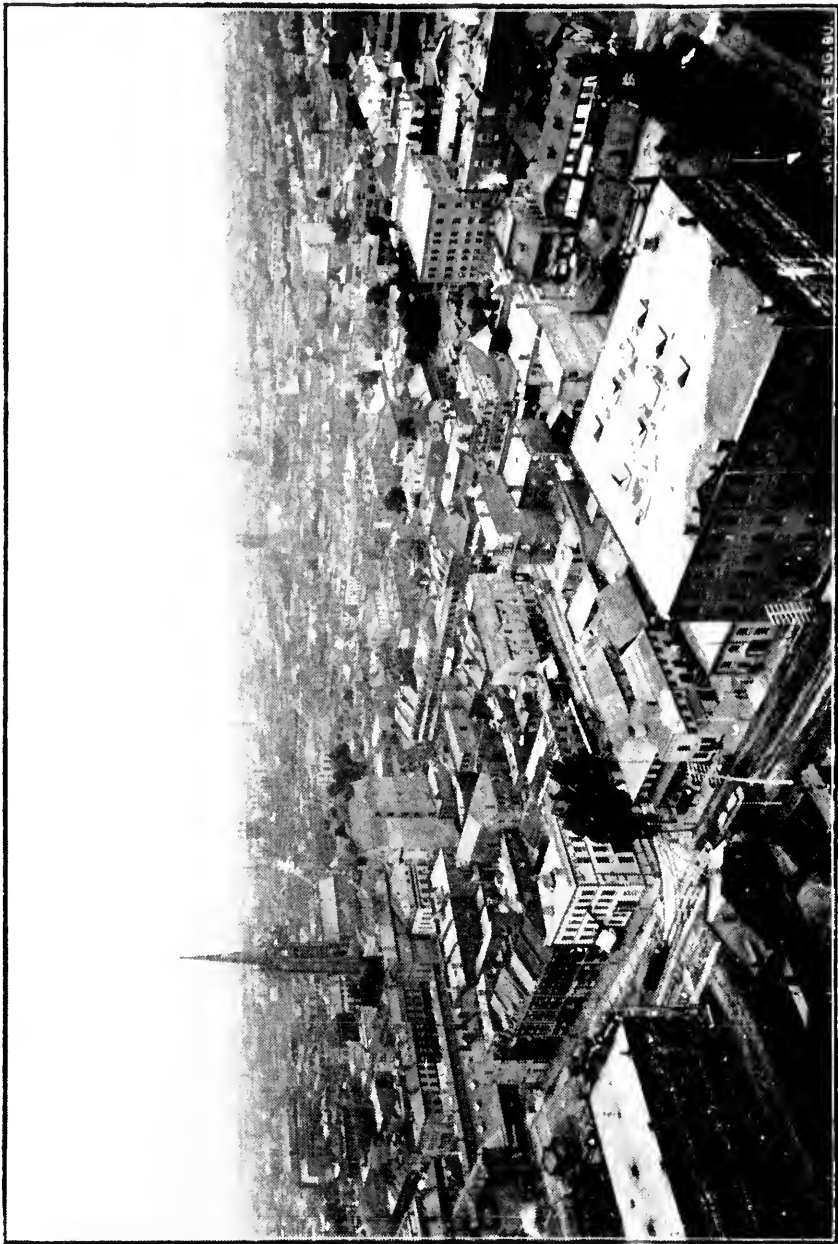
**CANADA LIFE BUILDING**

**OPERATING OFFICE:**

**CORNER KING AND CHURCH STREETS**

**TORONTO**





A VIEW OF TORONTO.

ca  
la  
ar  
an  
ca  
  
a f  
gi  
th  
ha  
tri  
th  
co  
m  
Th  
a  
40  
ce  
fr  
ta  
le  
  
st

## THE TROLLEY IN TORONTO

*Popular with the Public*

*Because it Covers the Whole Ground*

Every place of interest in Toronto—

All the parks—

All public buildings—

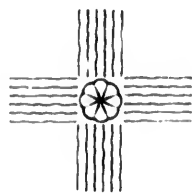
All the noted points in the famous commercial, educational and residential sections of the city—

And all the attractive spots in the woodlands and by lakeside with which this city and its suburbs abound, are on the line of the Toronto Street Railway system and are reached quickly and conveniently by the trolley cars—at the lowest street car fare on earth.

A tour by trolley over the entire system, engaging a few hours of swift, easy and delightful travel, will give a passenger a better and more thorough idea of the size and matchless beauty of Toronto than can be had by any other means. Such a tour, made in one trip and only one way, over the different sections of the line, affords a ride exceeding 40 miles of actual continuous travel—or about one half of the entire mileage of the trolley system reduced to single track. The purchase of a quarter's worth of fare tickets enables a passenger to make the entire one-way tour of over 40 miles of "trolleying" in Toronto at about a half cent per mile—the longest single-fare trip, extending from Victoria Park, west to Toronto Junction—a distance of ten miles—being made for  $3\frac{1}{2}$  cents, or a trifle less than a third of a cent per mile.

In no other city in the world is the railway fare on street cars so low as here.

# When Diamonds are Wanted



We Can Interest You.

Our Stock is the Largest in Canada,  
and is personally selected by us in  
Amsterdam, direct from the hands  
of the cutters.

Thus all middle profit being saved, and  
being admitted "Duty Free" we  
challenge the World.

## Ryrie Bros.

Cor. Yonge and Adelaide Sts.

*Established over a  
Quarter of a Century*

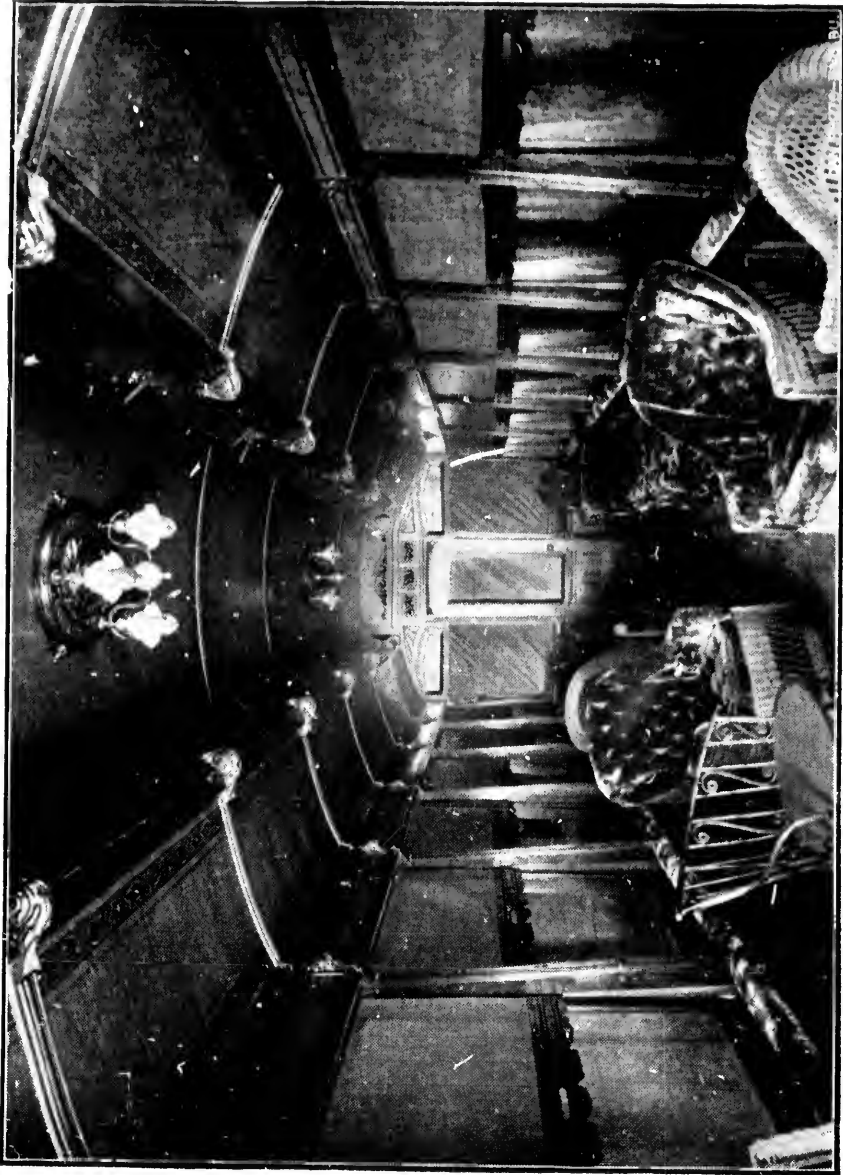
Yonge, Queen, and Yonge and College Street cars pass this  
Store, and only one block distant from  
the King Street and Belt Line cars.

Canada,  
is in  
lands

and  
we

Sts.

his



INTERIOR VIEW OF PRIVATE CAR TORONTO RAILWAY CO.

### HOW TO GET ABOUT TORONTO.

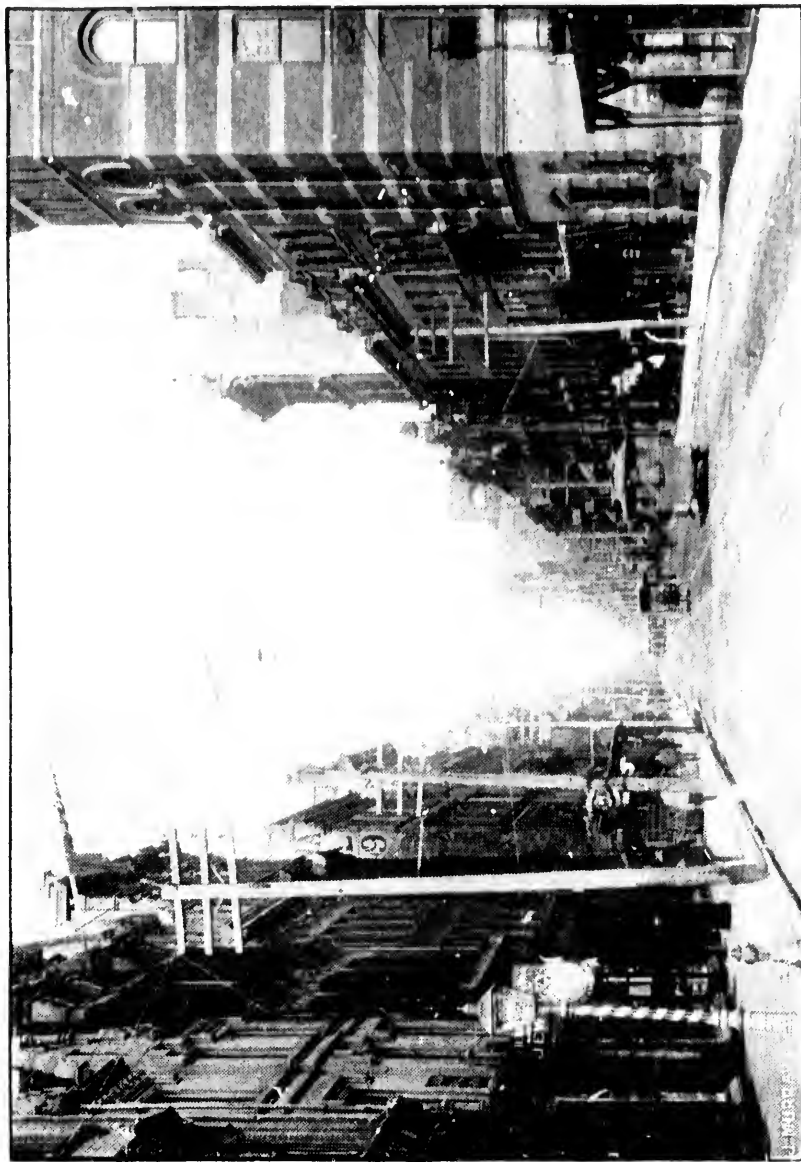
The facilities for getting about the city are nowhere excelled. The electric cars running in every direction, all under one control, renders an almost perfect system possible and enables people to reach any part of the city with the least possible delay. There are no less than seven lines of cars running north and south, viz.:—On Yonge, Church, Sherbourne, Parliament, Broadview, Spadina and Bathurst Streets; while four lines run completely across the city east and west, viz.:—King, Queen, College and Carlton and Bloor Streets. If necessary, to reach their destination, passengers can obtain transfers from one line to another. For one fare a person can travel from any one part of the city to any other part with all convenient speed and comfort. The lines have been so arranged as to carry people just where they want to go with as few changes as practicable.

---



A BIT OF HIGH PARK SCENERY

here  
tion,  
stem  
f the  
less  
outh,  
ment,  
four  
west,  
Bloor  
pass-  
ther.  
urt of  
speed  
as to  
s few



A VIEW OF KING STREET EAST.  
Looking West from the Operating Office of The Toronto Railway Co.

**FARMER BROS...**

*92 Yonge Street*

The Great Group

Photographers

The JAS. MORRISON

BRASS MNFG. CO'Y



- - TORONTO, ONT.



MANUFACTURERS OF :: :: ::

STREET CAR . . .



BRASS TRIMMINGS

. . . GONGS, Etc.

- ALSO -

ENGINEERS, PLUMBERS & GAS FITTERS

BRASS WORK,

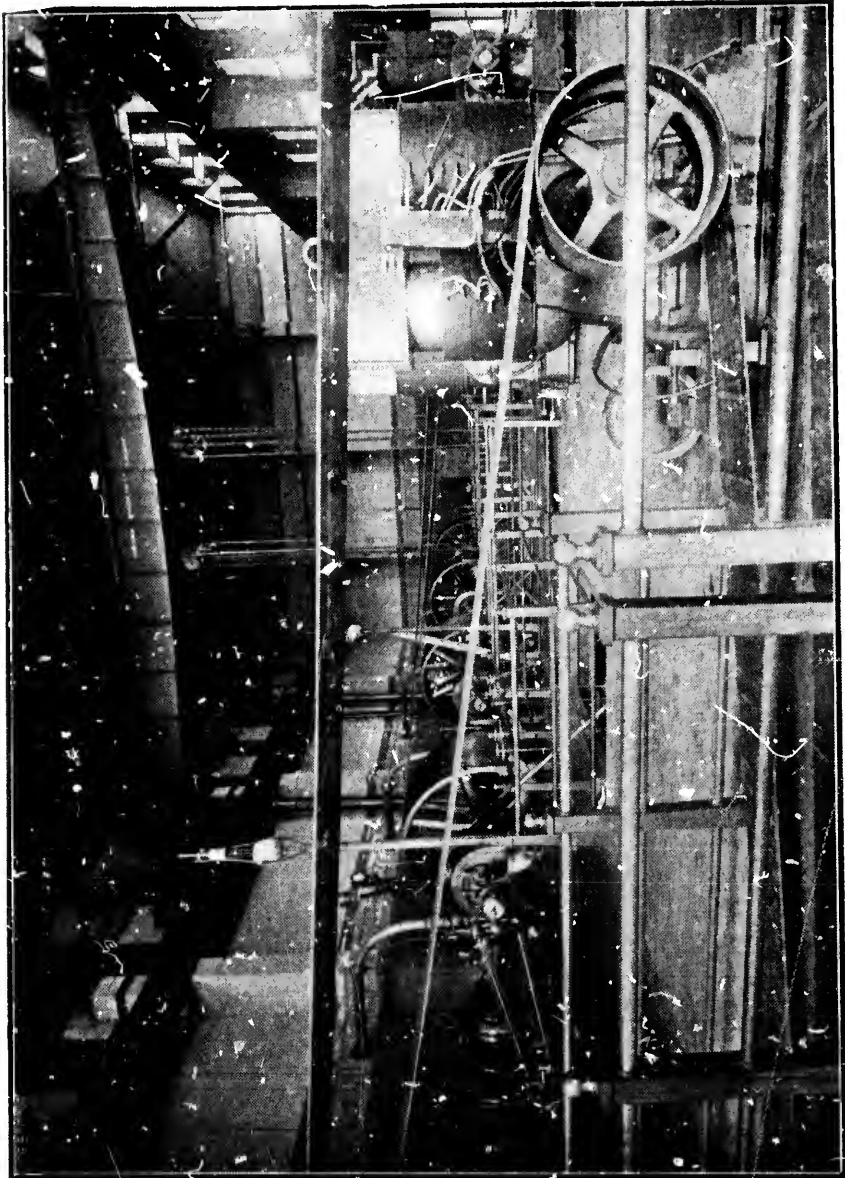
STEAMGAUGES,

ETC., ETC.

IT.

S

RS



INTERIOR OF POWER HOUSE, TORONTO RAILWAY CO.



5 KING STREET EAST

- G. R. RENFREW & CO. -

(Suppliers to Her Majesty THE QUEEN)

CARRY A COMPLETE STOCK

FURS - - - INDIAN CURIOSITIES  
HATS

Waterproof Coats, Umbrellas, Etc.

SEAL JACKETS and FUR-LINED

GARMENTS A SPECIALTY

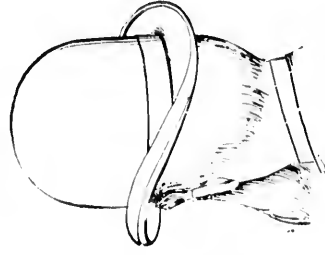
SOLE AGENTS IN TORONTO FOR

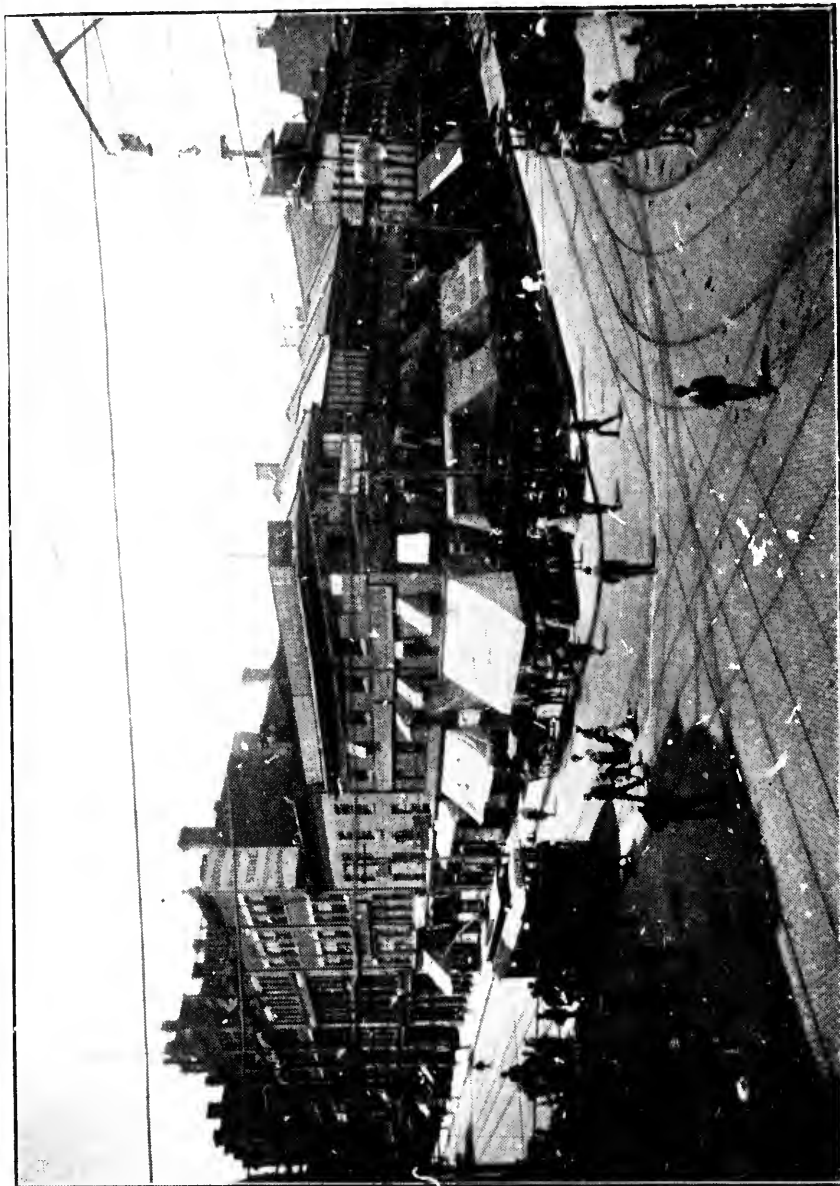
- KNOX HATS -

5 KING STREET EAST

TORONTO

35-37 BUADE ST., QUEBEC





JUNCTION OF STREET RAILWAY TRACKS COR. KING AND YONGE STS.  
View taken from Fur Parlors of G. R. Renfrew & Co., 3 King Street East.

### *ROUND THE BELT LINE.*

A better general idea can be obtained of Toronto by a ride round the Belt Line than in any other way. It encircles the major part of the city, the splendid retail stores of King Street, the handsome residences of the merchant princes in the suburbs, as well as a part of the older and less wealthy locality, passing in review on this favorite route. Half way up Sherbourne Street are the Horticultural Gardens. At Bloor Street the cars turn westward past scores of the finest private mansions in Canada. Most of the great educational institutes, for which Toronto is justly famous, are on the Belt Line, and it passes all the leading hotels, and crosses all the other street car routes. The Belt Line trip is one of the most popular and interesting of the entire system, and during the summer evenings the cars on this line are crowded with ladies and babies out for an airing, and physicians prescribe this trip very generally as a most refreshing bed-time stimulant and diversion.

### *THE YONGE STREET LINE.*

Starting at the new Union Station, now in course of erection, the cars pass all the down-town hotels clustered at the corner of King and York Streets, and turning east, run along King Street to Yonge, the main artery of the city. This is the busiest corner in Toronto, nearly all the street car lines centre at this point and there is never a minute in the day but that some of these public conveyances are passing to and

*(Continued on page 18).*

o by  
It  
re-  
es of  
part  
re-  
arne  
loor  
the  
reat  
stly  
ead-  
tes.  
in-  
mer  
lies  
ribe  
ime

e of  
lus-  
and  
ain  
To-  
oint  
hat  
and



SCENE ON THE HUMBER RIVER.  
On the Mimico Ry. Line.

---

**WATERSON**—R. C. WATERSON— 126 YONGE  
STREET

That's the Tailer for You

---

*(Continued from page 16).*

fro. There is a four minute service on Yonge Street alone. besides the many others that branch into it. Nearly 3,000 trains or about 5,000 cars pass this point every day. Continuing up Yonge Street the line pierces the heart of the busiest retail section in Canada. The new City Buildings, the Salvation Army headquarters, Massey Hall, Y.M.C.A. building, the building of the Young Women's Christian Guild and others are accessible to passengers by this route.

The line terminates at the Canadian Pacific Railway tracks adjoining the North Toronto Railway Station, within a short distance of the Reservoir Park, one of the highest and prettiest spots around the city. From the banks of the Reservoir on the brow of the hill, some good views are to be obtained. The naturally beautiful landscape has been improved by art, through the valley a creek winds its way to the lake, and shady walks and quiet nooks abound ; this is a favorite place for picnics.

Mount Pleasant cemetery is some half mile away, and can be reached by taking the Metropolitan Railway electric cars from the north side of the C.P.R. tracks.

On the return journey the cars run through the wholesale business section of the city, almost to the foot of Yonge Street, past the Board of Trade building and Custom House, to within a few steps of the wharves of the great Niagara Falls and Lake passenger and excursion steamers and the ferry steamers running to and from Toronto Island.

Street  
 into it.  
 s point  
 e line  
 n Can-  
 Army  
 ng, the  
 ld and  
 te.  
 Railway  
 tation,  
 one of  
 From  
 e hill,  
 turally  
 ough  
 shady  
 e place  
  
 away,  
 Rail-  
 P.R.  
  
 h the  
 o the  
 ilding  
 f the  
 enger  
 nning



SHERBOURNE ST. NEAR BLOOR, LOOKING SOUTH, BELT LINE.

**TRIUMPHS OF FINE TAILORING.**

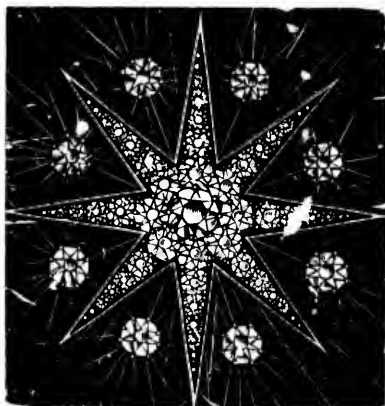
126 Yonge Street



**Waterson's  
 Suits**



ROYAL CANADIAN YACHT CLUB HOUSE, TORONTO ISLAND.



# Ellis'

*The Leading  
Diamond House  
of Canada . .*

ESTABLISHED 1836

**WE** are direct importers of Diamonds, Watches, Jewelry, Silverware, Clocks, Faience, Bronzes, etc., and we sell as we buy—at the lowest prices for cash. The largest and choicest display of Fine Wares in Toronto.

**THE J. E.**

**ELLIS**

**CO., LTD.**

*Inc. Capital, \$100,000*

**3 KING ST., EAST**

**All Street Cars stop at our Store.**

ISLAND.



MAIN DRIVE, HIGH PARK.  
High Park Line.

The direct Street Car Lines to High Park are King Street cars going west, Queen Street and Queen and Dundas, and the Carlton and College Street cars. Free transfers may be had to these from any of the other lines.



### *A STREET OF CHURCHES.*

Church Street was well so named. At its south end is the fine church of St. James, the English Cathedral, with its high spire and lovely chimes ; then follow the Metropolitan Methodist Church, an imposing structure standing in its spacious grounds ; St. Michael's, the Roman Catholic Cathedral and the various institutions connected with it, and Bond Street Church. The Church Street cars also pass the Public Library, the Normal School, Athenæum and Granite Club Houses, and cross the Sherbourne Street bridge into Rosedale, the nearest point to the grounds of the Lacrosse Club, where many interesting sporting events take place.



### *THE CARLTON-COLLEGE STREET ROUTE.*

The Carlton-College, or "Cross Town" line, is a much travelled route and there is much of interest to be seen on the way. The Victoria Hospital for Sick Children, the Grace Homœopathic Hospital, the Medical College, the School of Technical Science, the famous Bishop Strachan School, the Harbord Collegiate Institute, the General Hospital, the Jail, Toronto University, the Toronto Athletic Club Building, the Parliament Buildings, Queen's Park, and other notable attractions are accessible by the "Cross Town" line, and the Yonge and College Street cars go direct to Toronto Junction.

its south  
the English  
mes; then  
h, an im-  
ounds; St.  
and the  
and Bond  
o pass the  
useum and  
erbourne  
nt to the  
interesting

**UTE.**

ine, is a  
terest to  
for Sick  
ne Med-  
nce, the  
rd Col-  
il, Tor-  
uilding,  
d other  
"Cross  
et cars



ROSEDALE, SECOND BRIDGE.  
This point is reached by the Church Street Cars.

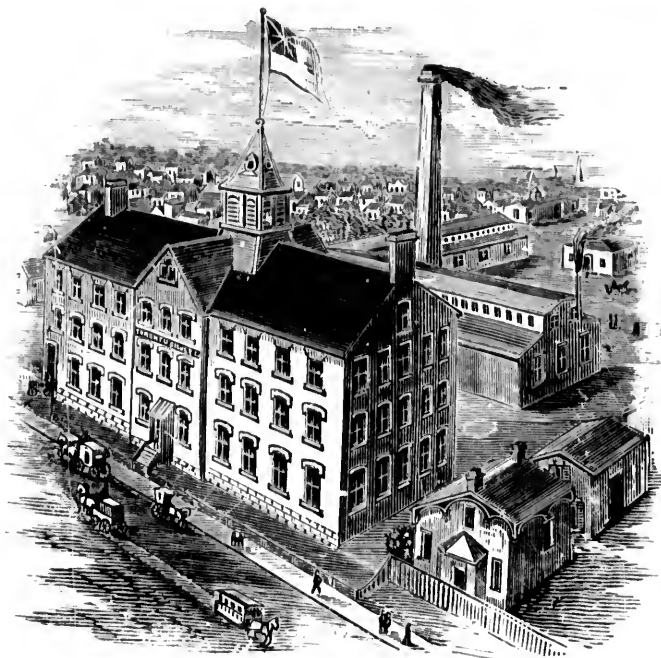
**Triumphs of Fine Tailoring—WATERSON'S SUITS**

- 126 YONGE ST. -

THIS ILLUSTRATION REPRESENTS  
THE FACTORIES AND  
SALESROOMS OF THE

*:: Toronto Silver Plate Co. ::*

WHICH ARE LOCATED AT  
*570 KING ST. WEST*



*This Company are Designers and Manufacturers  
of Wares in Sterling Silver and  
Electro Silver Plate.*

*Visitors to the Works are always welcome.  
King Street Cars pass our Salesrooms.*

E. G. GOODERHAM,

*Manager.*

JNO. C. COPP,

*Sec'y-Treas.*

Co. ::  
ATED AT  
WEST



Manufacturers

PP,  
y-Treas.



VICTORIA PARK, AS SEEN FROM THE LAKE.  
This Resort is reached by King Street Cars going East.

### *ALONG THE LAKE SHORE ROAD.*

There is no lack of lovely places in and around Toronto, but few to equal the beauties in the neighborhood of Humber Bay. A panorama of glorious views greet the passenger along this route. Electric cars to Mimico connect with the Toronto system at the Sunnyside Club Boat House and run along the sandy beach of the Lake Shore Road, crossing the Humber River and passing through one of the brightest stretches of landscape on the face of the earth. Passengers can leave the cars anywhere along the route to gambol on the beach or to meander through the wooded nooks along the line.

There is no lack of accommodation at the mouth of the Humber in the way of hotels and boathouses, and the trolley tourist can take a row up this charming river or a sail on the lake, away from the turmoil and danger of the steamers; and fishing is excellent sport at this point.

A short distance farther west is another little river, too small for boating, but just the thing for bathing; it has a fine sandy bottom and is deep enough for a swim without fear of drowning. A lovely and favorite spot for private picnicing is a pine grove on a high bluff at the edge of the water, a quarter of a mile or so before reaching the end of the line at New Toronto, which is within a short distance of Long Branch and other resorts much frequented during the summer season. There are cars to and fro every twenty minutes, and the fare is five cents, or six tickets for a quarter.

around  
neighbor-  
ous views  
tric cars  
at the  
e sandy  
Humber  
rightest  
Pas-  
route to  
gh the

outh of  
es, and  
arming  
oil and  
sport

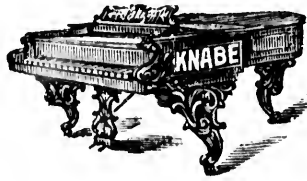
river,  
hing ;  
for a  
favor-  
high  
ile or  
onto,  
and  
mer  
mm-  
or a



THE LAKE SHORE ROAD, ON THE MIMICO LINE.  
Connections with Mimico Cars are made by King and Queen St. Cars at High Park.

*Ever tried Waterson for Fine Tailoring at Low Prices ?*

- 126 YONGE ST. -



*Courlay, Winter & Leeming*

The well-known Piano Dealers,

Are just now offering special inducements to purchasers.

In addition to their regular stock of Pianos, comprising such well-known makes as

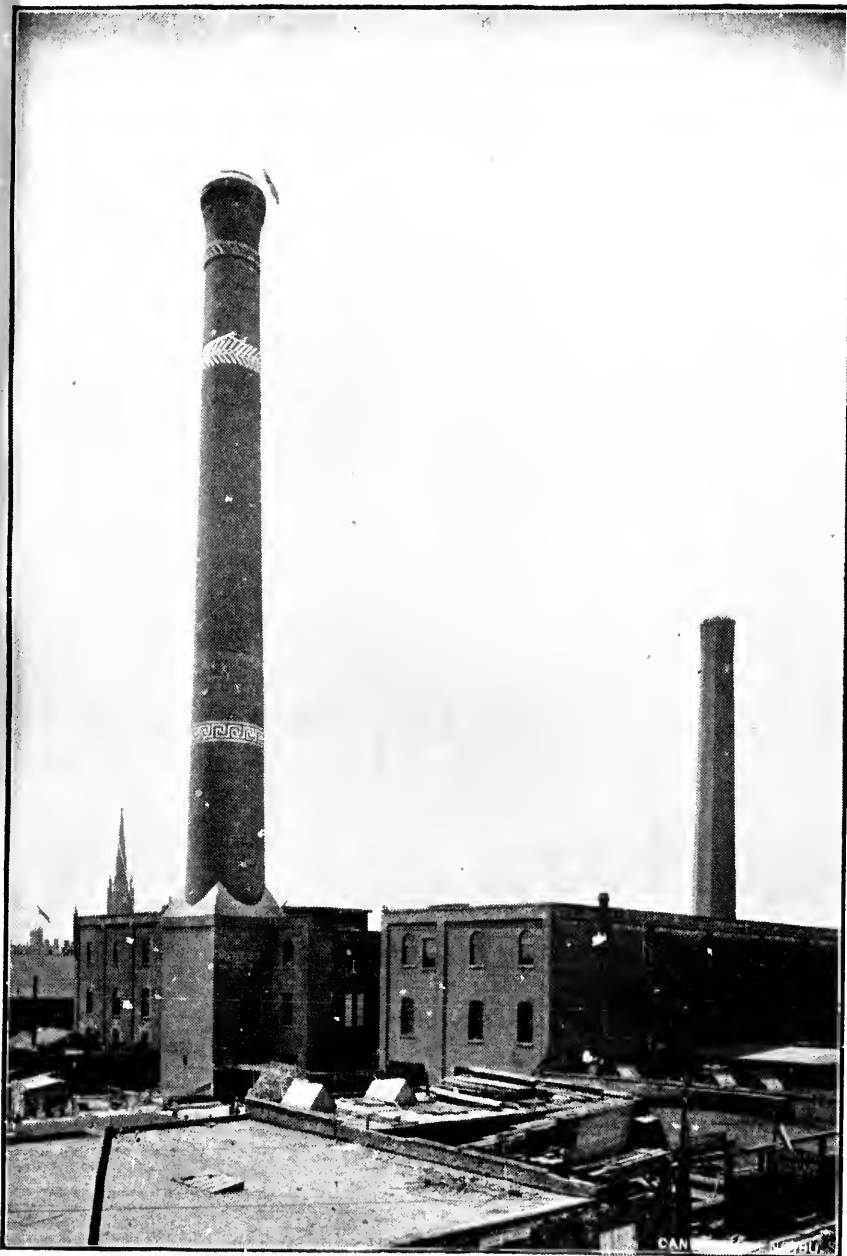
**KNABE, HARDMAN, FISCHER,  
GERHARD HEINTZMAN,  
KARN AND BERLIN,**

Which they are offering at very close prices for present orders, they also have a number of slightly used Pianos that have come in from rent or concert use, which they are prepared to sell at exceptionally close figures for cash or at short date.

Inspection invited. Correspondence solicited.

See or write

**Courlay, Winter & Leeming**  
**188 YONGE ST., TORONTO**



**THE LOFTIEST CHIMNEY IN CANADA.**  
250 feet high, and affording a view of 50 miles in every direction from  
its top. At the Power House of The Toronto Railway  
Company at Front and Frederick Streets.



### *HIGH PARK AND VICTORIA PARK.*

At Roncesvalles Avenue in the west, where King Street forms a junction with Queen, the cars labelled "High Park and Victoria Park" start on their journey eastward, making close connection between the extreme east and west ends of the city. This line passes through Parkdale, one of the most charming of Toronto's residential sections, touches Exhibition Park—a special service being run during the exhibition season, which takes passengers direct to the main entrance of the Park—the Mercer Reformatory, and some of the great manufacturing establishments of Toronto, the Central Prison, Cattle Market and Live Stock Yards are on the line of the King Street cars on the west side of the city, and passing through its retail centre by the leading hotels. Going east the cars cross the Don River, pass the Baseball grounds and continue to the Woodbine race course, Kew Beach, Balmy Beach, Victoria Park, and through a section of magnificent scenery traversed by streets which lead to the summer-outing homes in the bushlands near the lake, where many Torontonians and summer visitors from the States pass the season in cottages. Bathing and boating are excellent and extremely popular here.

At the Woodbine Park the Toronto Railway connects with the Scarboro Electric Railway which passes through what is very aptly described as the "Switzerland of America." This line has its terminus at the Victoria Park gates. Round-trip tickets are issued over both systems for fifteen cents.

e King  
labelled  
r jour-  
en the  
s line  
ing of  
Park  
bition  
main  
, and  
ts of  
Live  
rs on  
a its  
east  
eball  
rse,  
and  
by  
the  
ans  
son  
nd  
  
n-  
es  
r-  
e  
d



A CORNER OF THE PICNIC GROUNDS, HIGH PARK—ON HIGH PARK LINES.

Rugs  
Carpets  
Drapings  
Art Silks  
Lace Curtains

32

∩  
RETAIL  
DEPARTMENT  
∩

Visitors in Toronto are Invited to Inspect the  
Largest and Brightest Carpet Show-rooms in  
Canada. . . . .



**FOSTER & PENDER**

14 and 16 King Street East, Toronto

14 and 16 King Street East, Toronto



"ON THE LAWN," WOODBINE RACES.  
King Street Cars going east run direct to Woodbine Park.

### *THE LEADING WESTERN THORO'FARE.*

There are quite a number of places of interest on the line of the Queen Street cars running west. Among the notable structures on this line are Knox Church, the New City Hall and Court House, Osgoode Hall and the New Drill Shed and Armory adjacent, Trinity College, the Lunatic Asylum, and others. It continues through a sub-way at the Parkdale Railway Station, through the busiest part of the western section of the city to the Sunnyside Club Boat House on the way to High Park, by the lake shore entrance. Here the trolley tourists, if they have time, will find it impossible to resist the temptation to take the double-decked cars of the Mimico line for a trip along the Lake Shore Road, over the Humber to Long Branch.

The Dundas Street cars, branching off Queen Street, run right into the Park by the more northerly entrance at College Street. High Park comprises some 300 acres of picturesque woodland scenery ; at every point new beauties present themselves, and a walk through its shady groves is a pleasure not to be forgotten.



st on  
west.  
Knox  
goode  
cent,  
It  
Rail-  
vest-  
Boat  
shore  
have  
tion  
e for  
mber  
  
reet,  
erly  
ises  
; at  
d a  
be



A BIT OF SCENERY IN MOUNT PLEASANT CEMETERY.

### PATRONS OF PRIVATE CARS.

What's in a name ?

Cars are seen scurrying along the tracks occasionally bearing sign boards inscribed with the legend "Private Car." This means that the car has been chartered for the trip or the hour by somebody. The way people go about to do this is to apply at the Superintendent's office, cor. King and Church Streets, Private Cars are usually engaged for a theatre party, or perhaps for a ball or some other social function, and they're the next thing to taking fifty or sixty personal friends around comfortably in one's own private carriage. The fad was quite popular last winter and broke out in a new spot late this summer with a demand for cars for private "Moonlight Excursions."

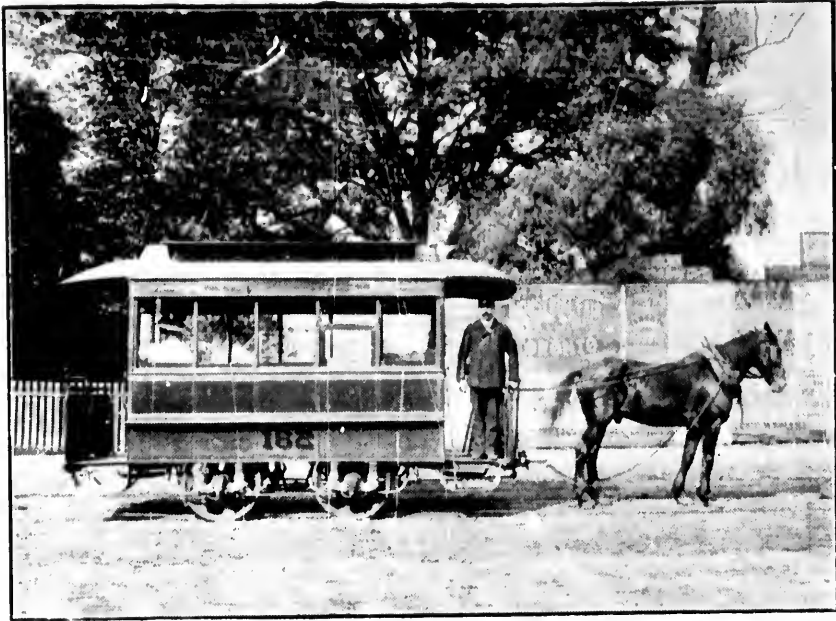
Special cars are reserved for this service, the "Moonlight Excursion Cars" being specially fitted up with cluster and festooned electric lamps, and they travel in a blaze of incandescent glory wherever they go.

Private Cars do not stop for other passengers than those for whose service they have been specially engaged, and there is at least one well authenticated case where a man complained of this fact in language quite plain, hot and strong for a minute and a half until a regular car came along—and then swore that a transfer ticket a couple of days old had been issued to him just five minutes before. Of such is the kingdom of kickers. They stop nearly everything but they can't stop a "Private Car."



TROLLEY MOONLIGHT EXCURSION CAR—TORONTO RAILWAY CO.



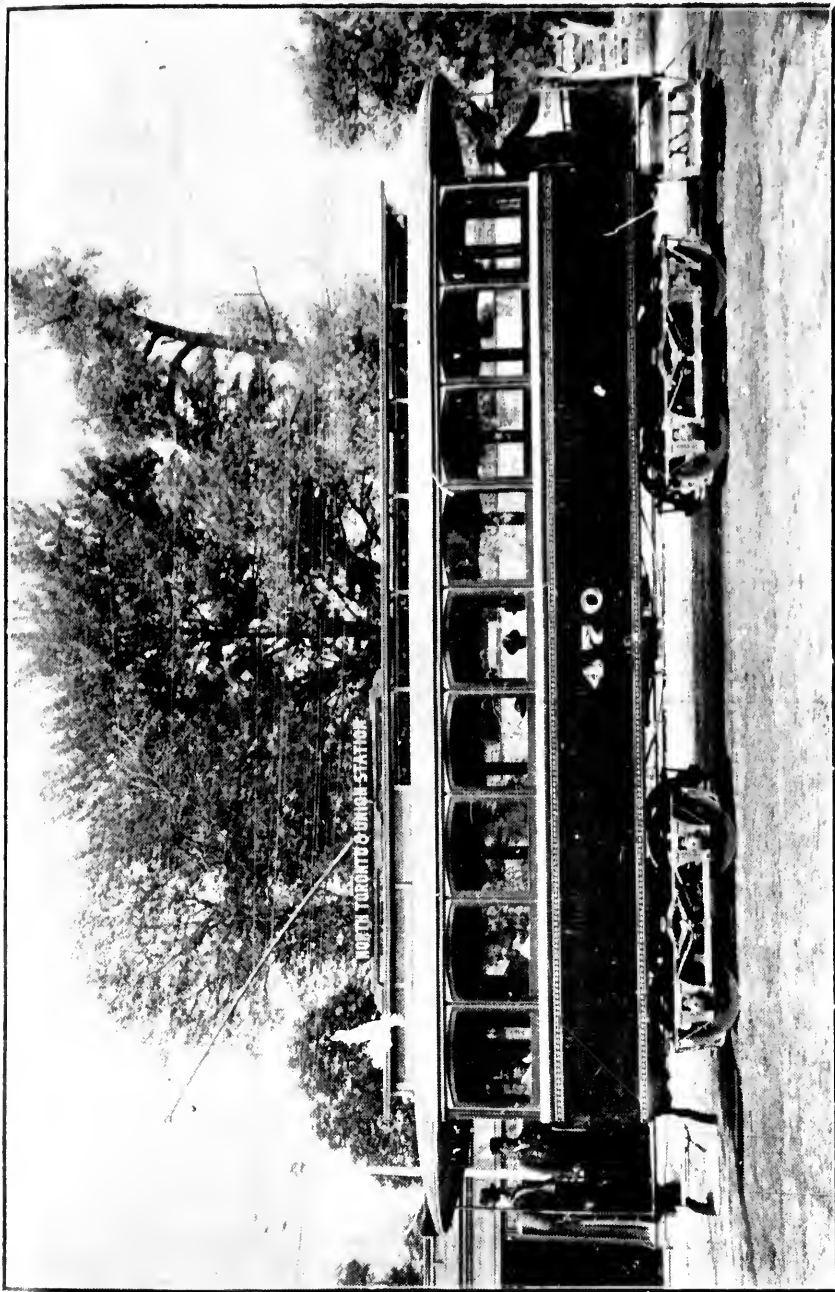


THE OLD HORSE CAR.  
An interesting relic of the old system.

---

***“DON'T MONKEY WITH THE TROLLEY.”***

The man who first tendered this advice is the father of several promising children, lives happily with his family, and is very justly and highly esteemed by all who know him. Applying the same practical, good, common sense embodied in his reminder to everything else has made him an exemplary man. Others, just like him, are dominant in this community. They do not find it inconvenient to observe the simple rules of ordinary caution to avoid unfortunate mishaps. Such a man does not attempt to board a steamer as it swings away from her wharf—nor leap off before she touches shore. Neither would he attempt to jump on



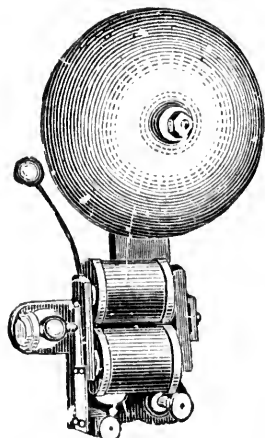
"NO. 470"—AN UP-TO-DATE VEHICLE.  
The Sample Palace Trolley Car after which the new cars of the Toronto Railway Company  
are being patterned.

or off a trolley car before it stops. In catering to his desire for all the fresh air possible on sultry days, he does not take advantage of the open side or window of the car to thoughtlessly thrust his head or body in the way of passing obstructions. Occasionally a passenger himself, he fully understands that the public demand a rapid service—more rapid really than the law prescribes or than the company would care to give, and with the knowledge that it is impossible to stop a running motor short, within its length, he instinctively waits a second while it passes before he starts to cross the tracks. His children follow his example closely and, under proper home training, most naturally keep off the streets.

---

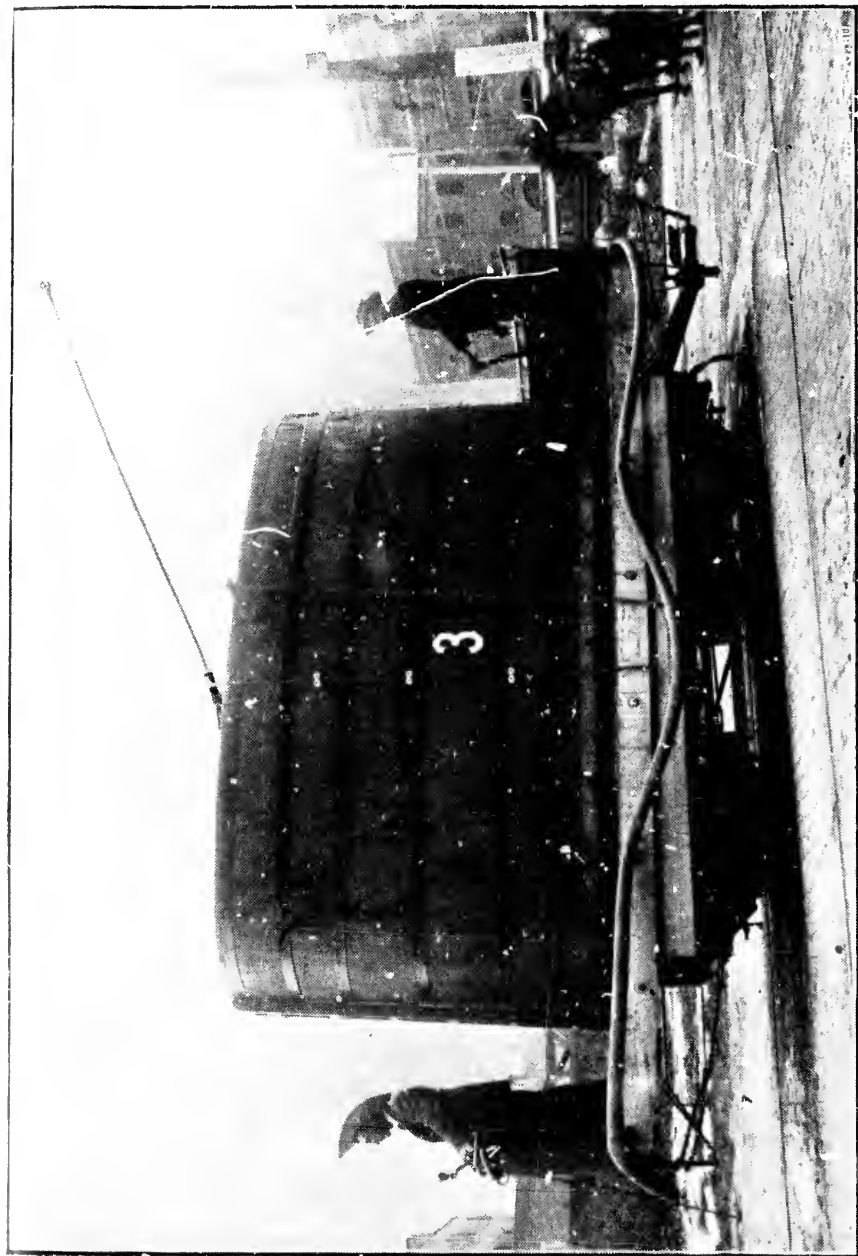
## GEO. FRAME . . . .

---



MANUFACTURER OF  
**TELEGRAPHIC . .**  
AND  
**ELECTRIC . . . .**  
**INSTRUMENTS . .**  
AND  
**SUPPLIES . . . .**

ALL KINDS OF BATTERIES MADE AND REPAIRED  
**29 COLBORNE STREET**  
**TORONTO, ONT.**



TROLLEY STREET SPRINKLER—TORONTO RAILWAY CO.  
= One of the several monster Trolley Sprinklers now in use - Capacity, 3,000 gallons of water.

THE

“Steel-Clad”

BATH . . .



**ALL METAL, UNENCASED, HANDSOME  
DURABLE, CHEAP**

*A FINISHED ARTICLE READY FOR  
IMMEDIATE USE*

**The Toronto Steel-Clad Bath and Metal Co.**  
(LIMITED)

**123 QUEEN STREET EAST**

**A. G. BOOTH, Manager.**

**TORONTO**



GLEN ROAD BRIDGE, ROSEDALE.

---

**Waterson works wonders—Fine Tailoring at Low Prices**

**126 YONGE ST.**

# M. & L. SAMUEL, BENJAMIN & CO.

IMPORTERS AND DEALERS IN

BRITISH,  
CONTINENTAL,  
AMERICAN and  
CANADIAN

{ . . . HARDWARE . . .  
. . . METALS . . .  
} TIN PLATES, Etc.

Wholesale Agents  
FOR TYPE  
COMMON SENSE  
BINDER TWINE

26, 28 & 30 FRONT STREET WEST, - - TORONTO

*Lamp Goods and Gas Fixtures*  
Department, No. 28

*Telephone Service for all Departments,*  
817, 843 or 1060

ENGLISH HOUSE: SAMUEL, SONS & BENJAMIN,

164 FENCHURCH STREET, LONDON, E.C.

SHIPPING OFFICE: No. 1 Rumford Place, LIVERPOOL

### *THE TROLLEY AS A TONIC.*

The hum of the trolley !

It's the sound of a thing full of business—

Inspiriting to the thousands on their way to office,  
store or factory every morning,

And cheering them with the bracing note of its tireless whirr, as it whirls them all back to their homes every night.

The trolley is a "get-up-and-git" affair of the first order. If it were anything less the public would kick. Its popularity in Toronto attests that it is quite up to the mark.

To the prosaic few the trolley car may seem merely a vehicle of conveyance to business or from one place to another. But there are thousands who travel on the trolley cars chiefly for the pleasure and recreation which they derive from the trips.

Impromptu little family picnics and excursions by trolley cars to High Park, Mimico, Kew Beach, Victoria Park and other charming near-by resorts have become the rage.

Business men find it delightfully convenient to drop work and worry for an hour or so in the day to enjoy the refreshing stimulant of a trolley trip to the suburbs and return.

On summer evenings the open cars on all the long routes are thronged with mothers, children, sweet-hearts and other sensible people, in the thorough enjoyment of the recreation which these lively and extremely inexpensive pleasure trips afford.

A further use for trolley cars has been discovered by



physicians, and possibly the trolley may yet be included with other recognized remedies of known and tried efficacy in the official pharmacopœa. The original prescription of a well-known physician of this city to one of his favorite patients is at hand to prove the remedy prescribed and if it were necessary, the portrait of the patient, with his testimonial of a speedy recovery, could easily be obtained in the usual way to serve as proof that the remedy "worked like a charm." The prescription reads :—

R

Trolley cars—

Round trips on the trailers. . . . . II

For June and July.

Take daily :—

One after breakfast in the morning.

The other after tea at night.

Expert medical authorities attribute exceptional virtues to trolley trips in open cars during the summer months for those afflicted with "that tired feeling," nervous depression, nervous prostration, insomnia, headaches and the entire host of kindred nervous troubles. Under the circumstances, it might possibly be worth something to find the "interesting case," (and there may be hundreds of them) who, having "tried all doctors and all other remedies in vain, finally took"—trolley trips, and was cured.

And the efficacy of this agreeable remedy is not a bit impaired by the ostensible fact that physicians who prescribe trolley trips for others take the same delightful medicine in pretty stiff doses themselves.

Even the children like it, and cry for it.



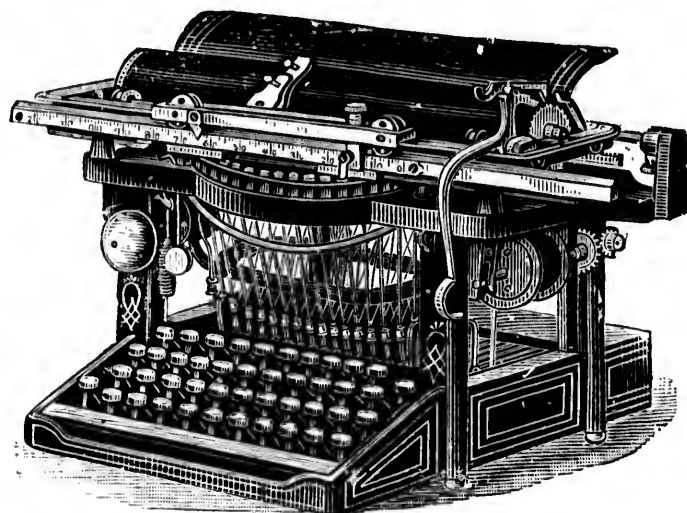
RESERVOIR PARK.  
On Yonge Street Line.

Yonge Street Cars pass many Tailors—but they all stop at WATERSON'S  
126 YONGE ST.

# REMINGTON STANDARD TYPEWRITER

RAPID

SIMPLE



- DURABLE -

**George Bengough,**  
45 Adelaide East.

Copying Done. Operators Supplied.  
Machines Rented, Repaired, or Ex-  
changed. Tel. 1207.

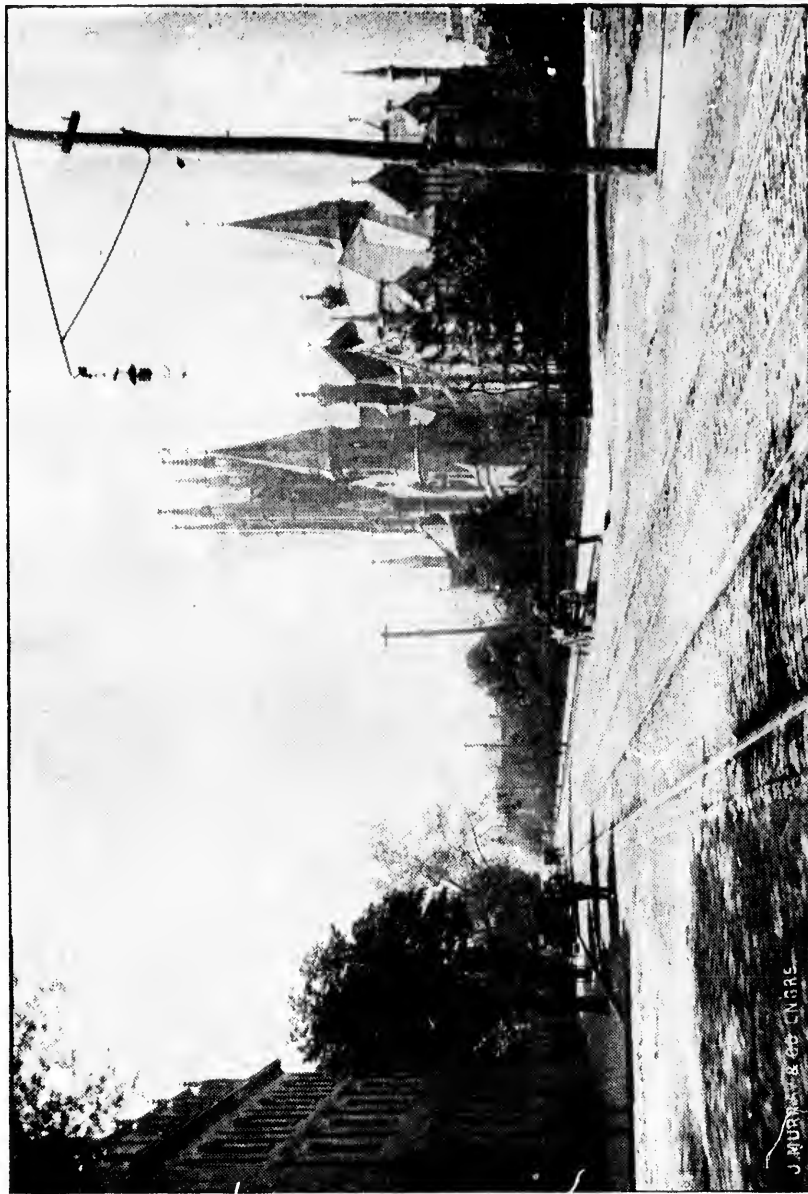
Fare tickets of the Toronto Railway Company are sold only by conductors on the cars, and at the office, corner of King and Church streets, at the following rates:—

YELLOW TICKETS. ....	25 for \$1 00
BLUE TICKETS.....	6 for 25 cents.
RED TICKETS (good only between the hours of 5.30 a.m. to 8.00 a.m., and 5.00 p.m. to 6.30 p.m....	8 for 25 cents.
CHILDREN'S TICKETS .....	10 for 25 cents.

**FREE TRANSFERS:—**Upon the payment of fare a transfer check may be had free from the conductor, which entitles the passenger to a ride from any point on the railway to any other point on a main line or branch.

R

DURABLE



CHURCH ST., FROM QUEEN ST.

J. MURPHY & CO. TORONTO

**Extremes meet—Fine Tailoring, Low Prices, at WATERSON'S  
126 YONGE ST.**

# BOECKH'S

---

. . . STANDARD . . .

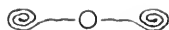
# BRUSHES

---

AND

# BROOMS

---



*CHAS. BOECKH & SONS*

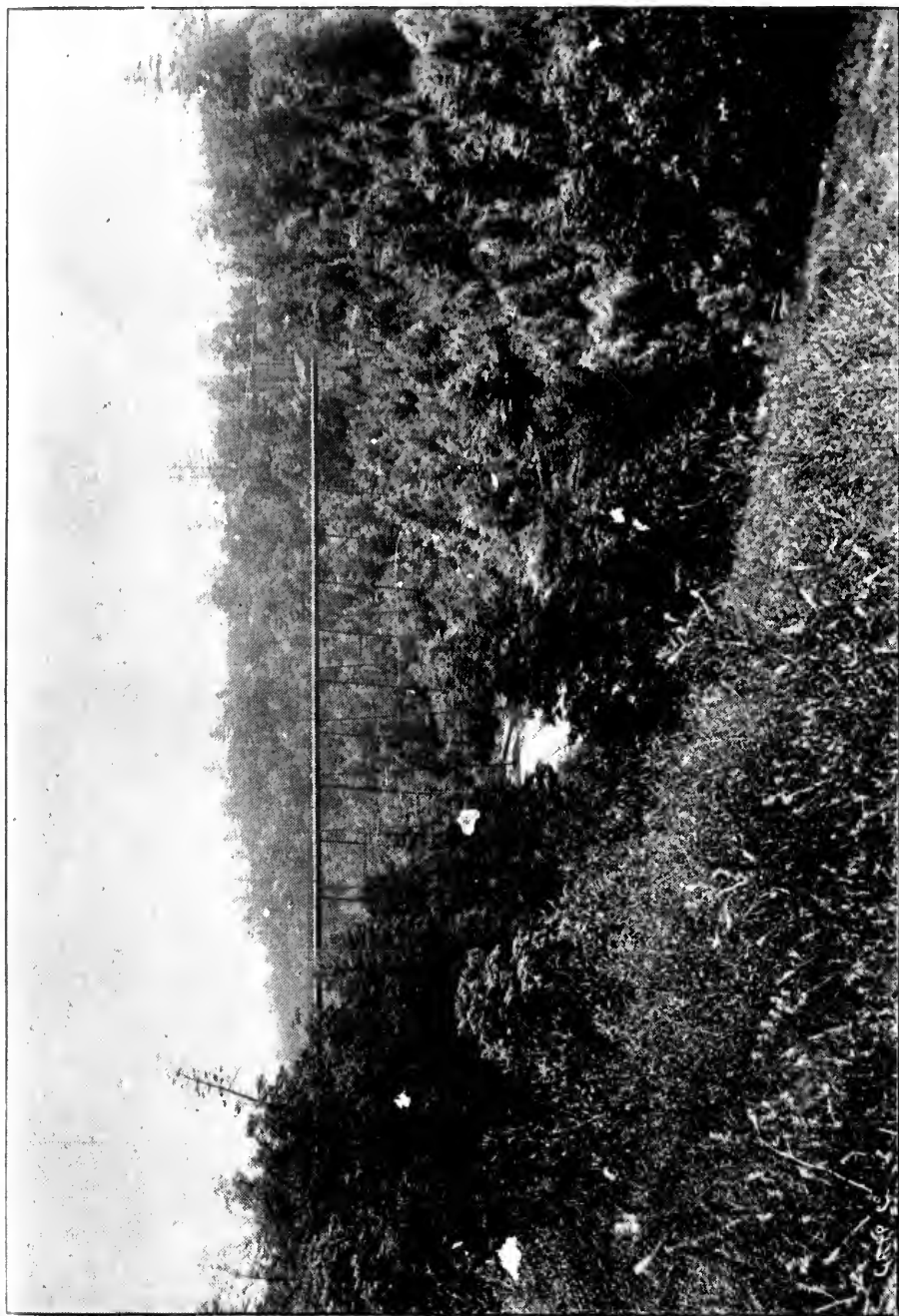
SOLE MANUFACTURERS

**80 YORK STREET**

TORONTO,

-

ONTARIO



THE SECOND ROSEDALE RAVINE.

### *CARS FOR SPECIAL SERVICES.*

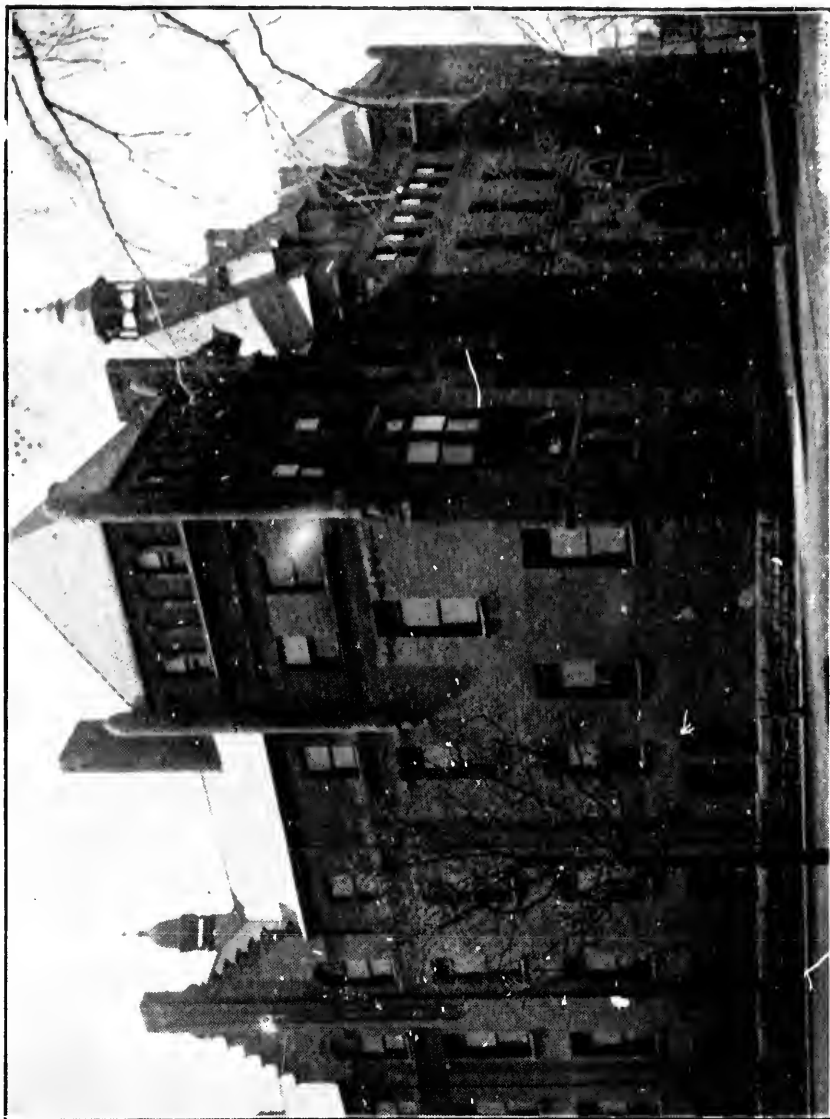
The trolley postal car, designed to facilitate the collection and distribution of mail matter is now being tested in one or two leading cities in the United States. As soon as its practical utility has been firmly established, the Toronto Railway Company will be ready to adopt the idea on the recommendation of the postal authorities.

In time there may be a demand for a local and suburban express and freight service by trolley cars. When that time arrives the company will be ready to operate a special service for that purpose.

A partial test was made of conveying the city's garbage in trolley carts by night. In time, the company, ever ready to extend its usefulness, may be asked to supply this service under a permanent arrangement.

Many bright suggestions, intended for the company's benefit, come from clever people, and all receive careful attention. Usually they are unique rather than useful.

For instance, one idea recently suggested by a Toronto undertaker, proposed the operation of a specially constructed private funeral car. His design represented a long car, finished in black, trimmed in silver and hung with black curtains. The forward quarter section of the car was to be enclosed and provided for the reception of the casket, and the remainder of the car, furnished in sumptuous but sombre upholstery, for the mourners. The suggestion bristled with details but—at present the company is wholly engaged in continually improving the service for live people.

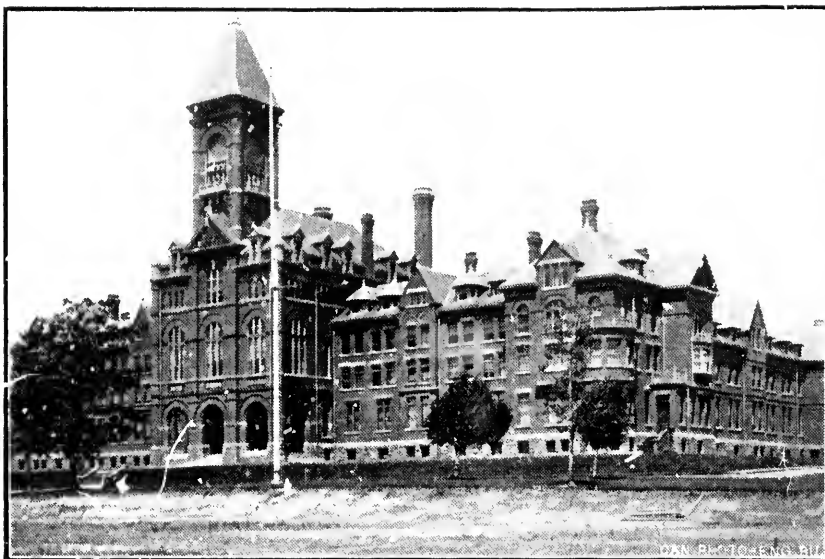


VICTORIA HOSPITAL FOR SICK CHILDREN.  
The Carlton and College Cars.

**REMEMBER THE NAME, WATERSON ! REMEMBER THE NUMBER, 126 YONGE ST.**

When you're ready to Order an Overcoat or a New Suit of Clothes.






UPPER CANADA COLLEGE.

BARKER'S  
**Shorthand**   
SCHOOL

*16 King Street West  
Toronto*

E. BARKER, Principal

  
Instruction given all day.

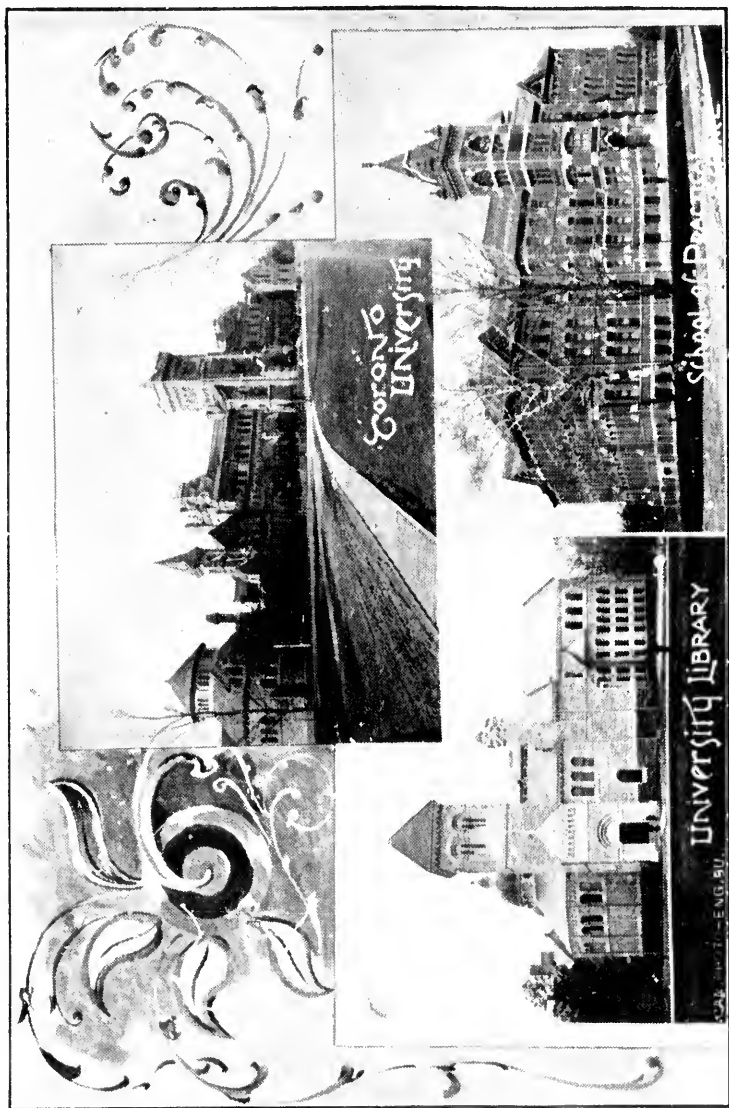
Terms very reasonable.

Call or send for Circular.

Pamphlets, "Which System Should we Learn,"  
...Sent Free.

**POPULAR EVENING CLASSES**

Fall Term opens on Sept. 18th



TORONTO UNIVERSITY AND MAIN BUILDING.

Don't be a "Ready-made" man. Have your Suits made  
by **WATERSON, 126 Yonge St.**

### THE TORONTO TROLLEY TIME TABLE.

A passenger, starting with the first car of any line at 5.30 in the morning, would have to keep on riding on trolley cars continually and without intermission from that early hour, all through the day and evening, returning on the last car at 12 o'clock at night, in order to make the total round trips on all the different lines of the Toronto trolley system and its trolley connections. And such a ride would embrace a trip covering over 125 miles. The speed at which cars are run in the city is from six to ten miles an hour, and the service on the different lines is timed as follows :

*Yonge Street Cars* make the round trip of five and a half miles in forty-four minutes, and this being the busiest line the cars are run at the shortest intervals—one following another every four minutes.

*Belt Line Cars* make the round trip of five and a half miles in forty-five minutes, and follow each other just five minutes apart.

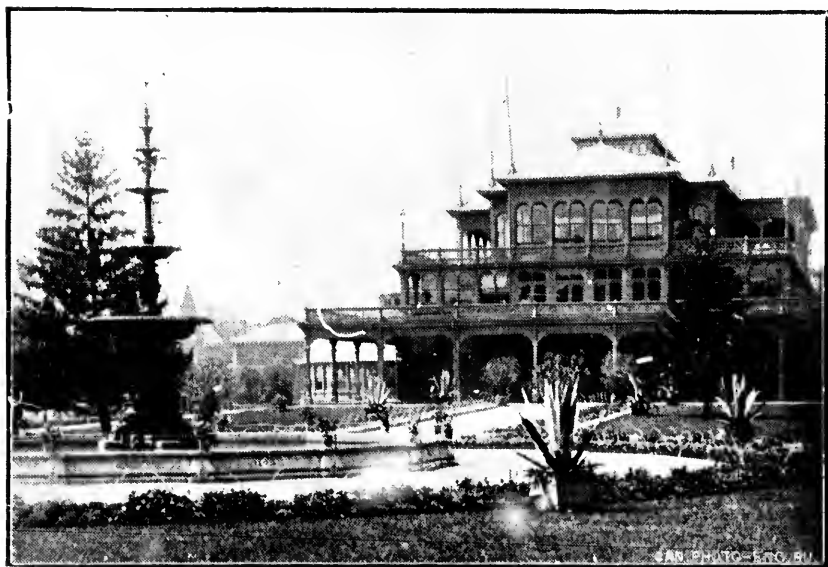
*To High Park by Queen Street Cars* engages a round trip of a trifle over eight miles, which is made in seventy-two minutes, and the cars run at intervals of eight minutes.

*King Street Cars*—running from Victoria Park at the extreme east end of the city, to High Park at the extreme west end—make the round trip of nearly sixteen and a half miles, the longest trip of the system, in one hour and forty-two minutes, and run six minutes apart.

*Carlton and College Street Cars*, with a round trip of nearly thirteen miles, made in one hour and forty minutes, follow each other every ten minutes.



VICTORIA PARK.  
King St. Line.



HORTICULTURAL GARDENS.  
On the Belt Line.

*College and Yonge Street Cars* make the round trip of eight miles in one hour and twenty minutes and run ten minutes apart.

*Church Street Cars* make the round trip to Rosedale and return in forty-five minutes, and run seven and a half minutes apart.

*Winchester Street Cars* run seven minutes apart on a round trip of five miles, which is made in forty-two minutes.

*Dundas St. Cars on the Queen St. Line* run at intervals of eight minutes and make the round trip of nearly eight and a half miles in eighty-eight minutes.

*Parliament Street Cars*, with a round trip of four and a half miles made in forty minutes, are run ten minutes apart.

*Broadview Avenue Cars* make the round trip of nearly six and a half miles in fifty minutes, and run ten minutes apart.

*Bathurst Street Cars* on the round trip of a little over four miles, made in thirty minutes, are run six minutes apart.

*Bloor Street Cars* run at intervals of six minutes and make the round trip of a little over three and a half miles in twenty-four minutes.

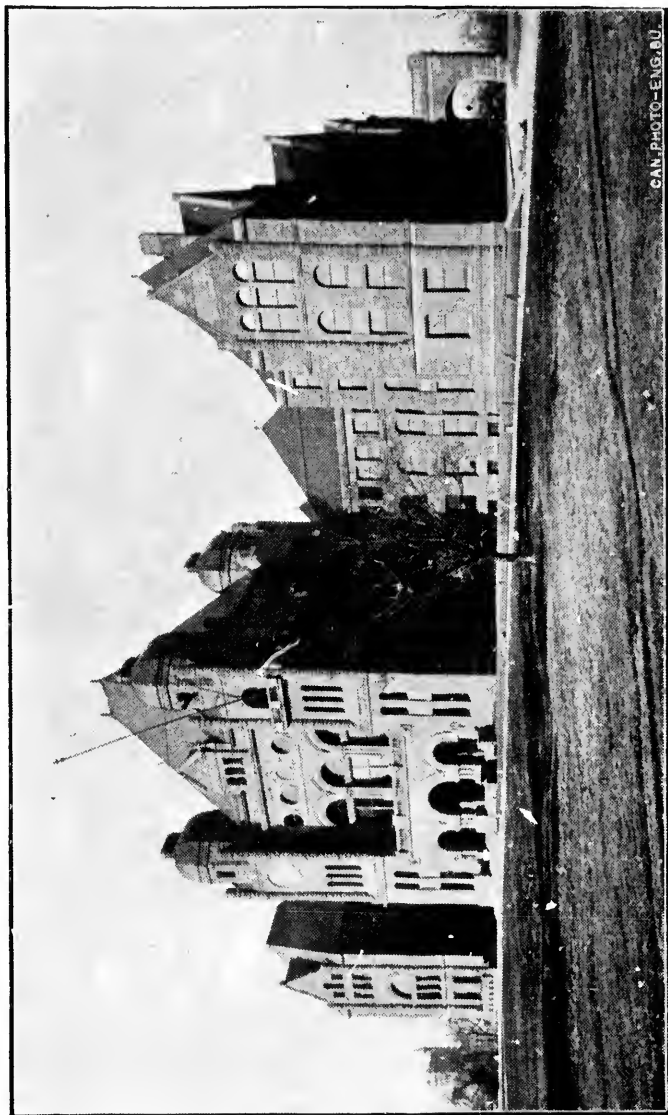
---

NIGHT CARS on all the main lines leave the junction of King and Yonge Streets at 12.35 a.m. and every hour after that until 4 o'clock a.m. The fare on night cars is ten cents.

#### ON SUNDAYS

“The Rich may Ride in their Chaises.”

The law prohibits Sunday cars.



CAN. PHOTO-ENG. BU.

PARLIAMENT BUILDINGS.  
Yonge and College Street Line.

# FURNITURE - -

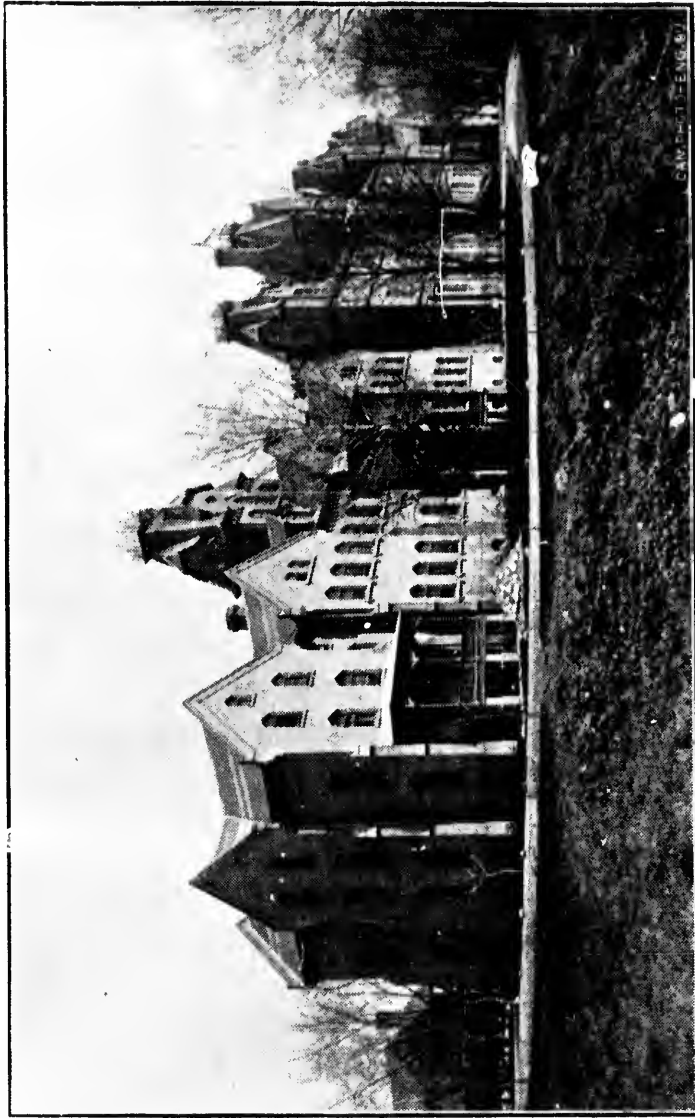
WE CARRY A VERY LARGE STOCK OF WELL  
MADE FURNITURE AND UPHOLSTERY IN  
THE NEWEST DESIGNS AND

• LARGELY OF OUR OWN MANUFACTURE •

PRICES REASONABLE . . . INSPECTION INVITED

THE CHAS. ROGERS & SONS CO'Y  
(Limited)

: 97 YONGE STREET :




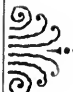
TORONTO GENERAL HOSPITAL.

The well-dressed man knows **WATERSON**, the Tailor  
**126 YONGE STREET**



# BANK VAULTS — ...JEWELLERS' SAFES

STORES AND WAREHOUSES OF ALL KINDS

	Watched	
	Guarded	
	Protected	

..BY ELECTRICITY..



The **HOLMES ELECTRIC PROTECTION CO.**  
OF TORONTO (Ltd).

*10 Melinda St.*

T. G. BLACKSTOCK, President.  
A. S. WIGMORE, Mng. Director.

## GUARDIAN

FIRE AND LIFE ASSURANCE CO. (Ltd).

Capital, - - \$10,000,000

Invested Funds Exceed, - 22,500,000

Head Office: - - MONTREAL

E. T. HEATON, Manager.

G. A. ROBERTS, Sub.-Manager.

Toronto Office, Cor. King and Toronto Sts.

*HY. D. P. ARMSTRONG,*

*MALCOLM GIBBS,*

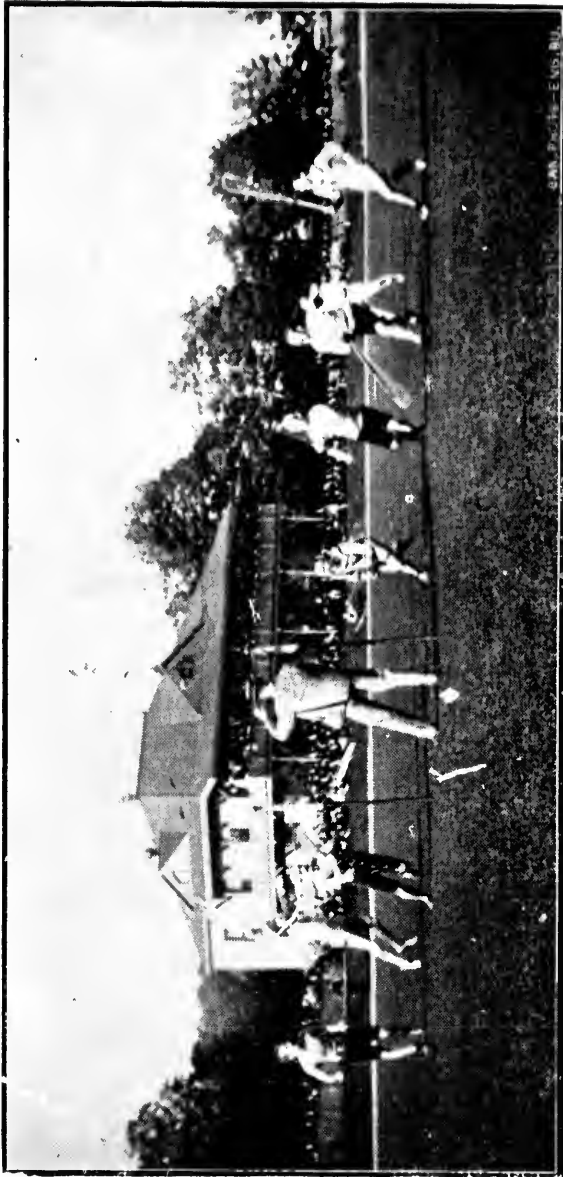
GENERAL AGENTS.



NORMAL SCHOOL.  
On Church Street Line.

**INDEX TO ADVERTISEMENTS.**

	PAGE.
John MacDonald & Co.....	2
Ryrie Bros., Jewelers .....	8
Farmers Bros., Photographers.....	11
James A. Morrison, Brass Founders.....	12
G. R. Renfrew & Co., Furriers.....	14
R. C. Waterson, Tailor .... 17, 19, 23, 27, 43, 47, 49, 53, 55, 61,	64
The J. E. Ellis Co., Jewelers .....	20
Toronto Silver Plate Co.....	24
Gouglay, Winter & Leaming, Pianos.....	28
Foster & Pender, Carpets.....	32
George Frame, Electrical Supplies .....	40
Toronto Steel Clad Bath Co.....	42
Samuel Benjamin & Co., Hardware, etc.....	44
Remington Typewriter.....	48
Boeckh & Sons, Brushes.....	50
Barker's Shorthand School.....	54
Chas. Rogers & Sons Co., Furniture.....	60
Holmes Electric Protection Co.....	62
Guardian Insurance Co.....	62
Owen Sound Portland Cement Co.....	66
Bertram Engine Works Co.....	67
J. H. Farr & Co., Varnishes.....	68



LACROSSE—AT ROSEDALE GROUNDS.

- **STREET CAR ADVERTISING DEPARTMENT** -

For Rates, etc., apply or address HEAD OFFICE, T. R. Co., *Canada Life Building*

**R. C. WATERSON—Famous for FINE TAILORING!**

**" 126 YONGE STREET "**

## INDEX TO ILLUSTRATIONS.

	PAGE.
Map of Street Railway System.....	4
View of Toronto.....	6
Interior Private Car.....	9
A High Park Sketch.....	10
King Street—Looking West.....	11
Interior Power Station, T. R. Co. ....	13
King and Yonge Street Junction.....	15
Scene on Humber River.....	17
Sherbourne Street View.....	19
R. C. Y. Club House.....	20
Main Drive High Park.....	21
Rosedale Second Bridge.....	23
Victoria Park View.....	25
View from Mimico Trolley Cars.....	27
View of Big Chimney.....	29
Picnic Grounds, High Park.....	31
The Woodbine Races.....	33
Mount Pleasant Cemetery.....	35
Moonlight Excursion Car.....	37
The Old Bob-Tail.....	38
The up-to-date Trolley Car.....	39
The Trolley Street Sprinklers.....	41
View of Glenroad Bridge.....	43
Reservoir Park.....	47
Church Street View.....	49
Second Rosedale Ravine.....	51
Victoria Hospital.....	53
Upper Canada College.....	54
The University Buildings.....	55
Victoria Park.....	57
Horticultural Gardens.....	57
Parliament Buildings.....	59
Toronto General Hospital.....	61
Normal School.....	63
Rosedale Lacrosse Grounds.....	64

## INDEX TO READING MATTER.

Frontispiece.....	3
Street Railway Company's Officials.....	5
Introductory Article.....	7
“How to get about Toronto”.....	10
“Around the Belt Line”.....	16
“The Yonge Street Line”.....	16
Church Street and Carlton-College Street Lines.....	22
“Along the Lake Shore Road”.....	26
High Park and Victoria Park.....	30
Queen Street West Lines.....	34
Patrons of Private Cars.....	36
“Don't Monkey with the Trolley”.....	38
“The Trolley as a Tonic”.....	45
Fares and Transfers.....	48
Cars for Special Services.....	52
Trolley Time Table.....	56

REGISTERED

BRAND

**SAMSON**

**PORTLAND CEMENT**

EQUAL TO THE BEST ENGLISH AND GERMAN BRANDS

Manufactured by **THE OWEN SOUND PORTLAND CEMENT CO., Ltd.**,  
**OWEN SOUND, ONT.**

*TENSILE STRENGTH, AS GIVEN BY SCHOOL OF PRACTICAL SCIENCE, AUG. 4, 1894  
AFTER 7 DAYS (6 days in water) IN POUNDS PER SQUARE INCH:*

1—395	3—430	5—392	7—430	9—400
2—400	4—430	6—395	8—405	10—408

*QUALITY GUARANTEED. Write for Prices, Tests and Samples.*

**JOHN LUCAS**, Representative for Toronto, **377 SPADINA AVENUE**

QUALITY GUARANTEED. Write for details.  
**JOHN LUCAS, Representative for Toronto, 377 SPADINA AVENUE**

