

**CIHM  
Microfiche  
Series  
(Monographs)**

**ICMH  
Collection de  
microfiches  
(monographies)**



**Canadian Institute for Historical Microreproductions / Institut canadien de microreproductions historiques**

**© 1998**

## Technical and Bibliographic Notes / Notes techniques et bibliographiques

The Institute has attempted to obtain the best original copy available for filming. Features of this copy which may be bibliographically unique, which may alter any of the images in the reproduction, or which may significantly change the usual method of filming are checked below.

- Coloured covers / Couverture de couleur
- Covers damaged / Couverture endommagée
- Covers restored and/or laminated / Couverture restaurée et/ou pelliculée
- Cover title missing / Le titre de couverture manque
- Coloured maps / Cartes géographiques en couleur
- Coloured ink (i.e. other than blue or black) / Encre de couleur (i.e. autre que bleue ou noire)
- Coloured plates and/or illustrations / Planches et/ou illustrations en couleur
- Bound with other material / Relié avec d'autres documents
- Only edition available / Seule édition disponible
- Tight binding may cause shadows or distortion along interior margin / La reliure serrée peut causer de l'ombre ou de la distorsion le long de la marge intérieure.
- Blank leaves added during restorations may appear within the text. Whenever possible, these have been omitted from filming / Il se peut que certaines pages blanches ajoutées lors d'une restauration apparaissent dans le texte, mais, lorsque cela était possible, ces pages n'ont pas été filmées.
- Additional comments / Commentaires supplémentaires:

L'Institut a microfilmé le meilleur exemplaire qu'il lui a été possible de se procurer. Les détails de cet exemplaire qui sont peut-être uniques du point de vue bibliographique, qui peuvent modifier une image reproduite, ou qui peuvent exiger une modification dans la méthode normale de filmage sont indiqués ci-dessous.

- Coloured pages / Pages de couleur
- Pages damaged / Pages endommagées
- Pages restored and/or laminated / Pages restaurées et/ou pelliculées
- Pages discoloured, stained or foxed / Pages décolorées, tachetées ou piquées
- Pages detached / Pages détachées
- Showthrough / Transparence
- Quality of print varies / Qualité inégale de l'impression
- Includes supplementary material / Comprend du matériel supplémentaire
- Pages wholly or partially obscured by errata slips, tissues, etc., have been refilmed to ensure the best possible image / Les pages totalement ou partiellement obscurcies par un feuillet d'errata, une pelure, etc., ont été filmées à nouveau de façon à obtenir la meilleure image possible.
- Opposing pages with varying colouration or discolourations are filmed twice to ensure the best possible image / Les pages s'opposant ayant des colorations variables ou des décolorations sont filmées deux fois afin d'obtenir la meilleure image possible.

This item is filmed at the reduction ratio checked below /  
Ce document est filmé au taux de réduction indiqué ci-dessous.

|  |     |  |     |  |     |  |     |  |     |  |     |  |
|--|-----|--|-----|--|-----|--|-----|--|-----|--|-----|--|
|  | 10x |  | 14x |  | 18x |  | 22x |  | 26x |  | 30x |  |
|  | 12x |  | 16x |  | 20x |  | 24x |  | 28x |  | 32x |  |

(A checkmark is present in the box corresponding to 24x.)

The copy filmed here has been reproduced thanks to the generosity of:

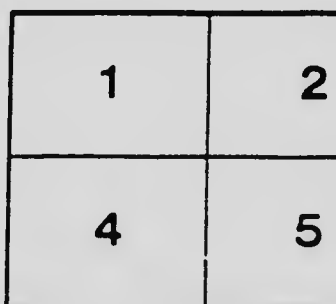
British Columbia Archives and Records Service.

The images appearing here are the best quality possible considering the condition and legibility of the original copy and in keeping with the filming contract specifications.

Original copies in printed paper covers are filmed beginning with the front cover and ending on the last page with a printed or illustrated impression, or the back cover when appropriate. All other original copies are filmed beginning on the first page with a printed or illustrated impression, and ending on the last page with a printed or illustrated impression.

The last recorded frame on each microfiche shall contain the symbol  $\rightarrow$  (meaning "CONTINUED"), or the symbol  $\nabla$  (meaning "END"), whichever applies.

Maps, plates, charts, etc., may be filmed at different reduction ratios. Those too large to be entirely included in one exposure are filmed beginning in the upper left hand corner, left to right and top to bottom, as many frames as required. The following diagrams illustrate the method:



L'exemplaire filmé fut reproduit grâce à la générosité de:

British Columbia Archives and Records Service.

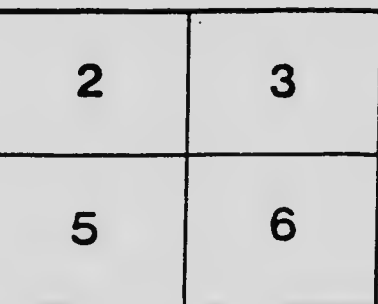
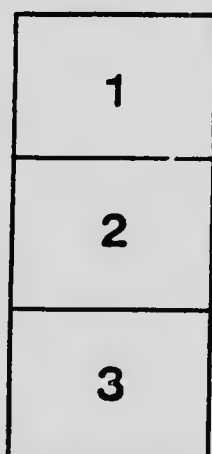
Les images suivantes ont été reproduites avec le plus grand soin, compte tenu de la condition et de la netteté de l'exemplaire filmé, et en conformité avec les conditions du contrat de filmage.

Les exemplaires originaux dont la couverture en papier est imprimée sont filmés en commençant par le premier plat et en terminant soit par la dernière page qui comporte une empreinte d'impression ou d'illustration, soit par le second plat, selon le cas. Tous les autres exemplaires originaux sont filmés en commençant par la première page qui comporte une empreinte d'impression ou d'illustration et en terminant par la dernière page qui comporte une telle empreinte.

Un des symboles suivants apparaîtra sur la dernière image de chaque microfiche, selon le cas: le symbole  $\rightarrow$  signifie "A SUIVRE", le symbole  $\nabla$  signifie "FIN".

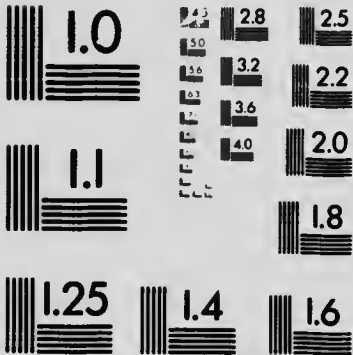
Les cartes, planches, tableaux, etc., peuvent être filmés à des taux de réduction différents.

Lorsque le document est trop grand pour être reproduit en un seul cliché, il est filmé à partir de l'angle supérieur gauche, de gauche à droite, et de haut en bas, en prenant le nombre d'images nécessaire. Les diagrammes suivants illustrent la méthode.



# MICROCOPY RESOLUTION TEST CHART

(ANSI and ISO TEST CHART No. 2)



**APPLIED IMAGE Inc**

1653 East Main Street  
Rochester, New York 14609 USA  
(716) 482-0300 - Phone  
(716) 288-5989 - Fax

NWP  
971.92  
B862+

# TOURISTS AND VISITORS GUIDE


- TO -

# Victoria



**TAKE THE STREET CARS**

- AND -

**Ask Conductors for  
Information** 

**AS TO REACHING**

**VARIOUS POINTS OF INTEREST**

PROVINCIAL ARCHIVES OF B. C.



## OFFICERS OF THE COMPANY.

### BOARD:

|                                    |                                  |
|------------------------------------|----------------------------------|
| R. M. HORNE PAYNE, Esq., CHAIRMAN, | } Directors,<br>London, England. |
| R. NORTALL LAURIE, Esq., . . .     |                                  |
| A. C. MITCHELL-INNES, Esq., . . .  |                                  |
| J. HORNE PAYNE Esq., Q C., . . .   |                                  |
| R. K. SPERLI Esq., . . .           |                                  |
| G. P. NORTON, Esq., . . .          |                                  |
| F. S. BARNARD, Esq., . . .         | British Columbia Director.       |

### HEAD OFFICE:

1 & 2 Great Winchester Street, London, England.

J. BUNTZEN, GENERAL MANAGER AND COMPTROLLER,  
VANCOUVER, B. C.

J. M. CAMPBELL, ASST. MANAGER AND CHIEF ENGINEER.

A. T. GOWARD, ASST. COMPTROLLER, VICTORIA, B. C.

H. GIBSON, SUPT. OF TRAFFIC, VICTORIA, B. C.

### VICTORIA OFFICE:

Bank of Montreal Building, - - Victoria, B. C.



# POINTS OF INTEREST

IN AND ABOUT VICTORIA,

## Reached by Street Cars.



### ESQUIMALT.

The village of Esquimalt, situated on the harbor of the same name, is about four miles from the Post Office. Cars leave the Corner of Yates and Government Streets at regular intervals for this point and the run down is made in about thirty minutes—Fare Ten Cents each way.

Esquimalt is the station for **Her Majesty's Navy** in the North Pacific, and there will always be found some warships flying the Union Jack lying at anchor in this snug little haven.

During a portion of the year the Admiral of the station, with quite a small fleet of more or less formidable ships, makes this his headquarters.

Such adjuncts to a Naval Station as the **DOCK YARD** with naval stores and ammunition in large quantities; the **NAVAL CANTEEN** with its grounds laid out for sports of such kind as are indulged in by officers and men of H. M. Navy; the Naval Club for Officers; and the **CRAYING HOUSE** capable of docking the largest battle ship in the British fleet; will all be found of interest to a visitor.



At **MACAULAY'S POINT**, on the Esquimalt Road, is located the Barracks and Mess Rooms of the **Royal Engineers and Royal Marine Artillery**.

The **United Service Golf Links** are also here and offer attractions to the ardent golfer.



## BEACON HILL PARK.

A twenty minute service to this point, at a cost of Five Cents, is afforded the visitor. The Park is a public one, and is beautifully situated overlooking the Straits of Juan de Fuca. Its drives and walks are well kept, and the view to be had of the Olympian Range of snowclad mountains in the State of Washington can not be excelled in any part of the world. A rare collection of wild beasts and birds, natives of the Province, make their home in the Park.



## OCEAN DOCKS.

Reached by taking the "Outer Wharf" Car, where steamships destined to or just arrived from the Golden Klondike, the Sandwich Islands, Australia, Japan and China, may be seen nearly any day in the week. The Dallas Road to Beacon Hill, following the sea beaches, a walk of not more than ten minutes, and the visitor can return to the city by another car over a different route.

## PARLIAMENT BUILDINGS.

The handsomest pile of public buildings in America should not escape the Tourist's eye. Cars every ten minutes.



## OAK BAY.

Take the Fort Street Car—fare is Five Cents and the time involved not more than twenty minutes travel each way. **The Royal Jubilee Hospital** and **Victoria Driving Park** are passed *en route*.

The lovely view to be obtained of Mount Baker and Mount Rainier on a clear day, as well as of the beautiful bay studded with its green little islets, will amply repay the visitor.

**The Victoria Golf Club Links** on Gonzales Point are distant a short ten minutes walk.

**The MOUNT BAKER HOTEL**, a famous Summer Resort, will at reasonable prices provide the "inner man" with refreshments.



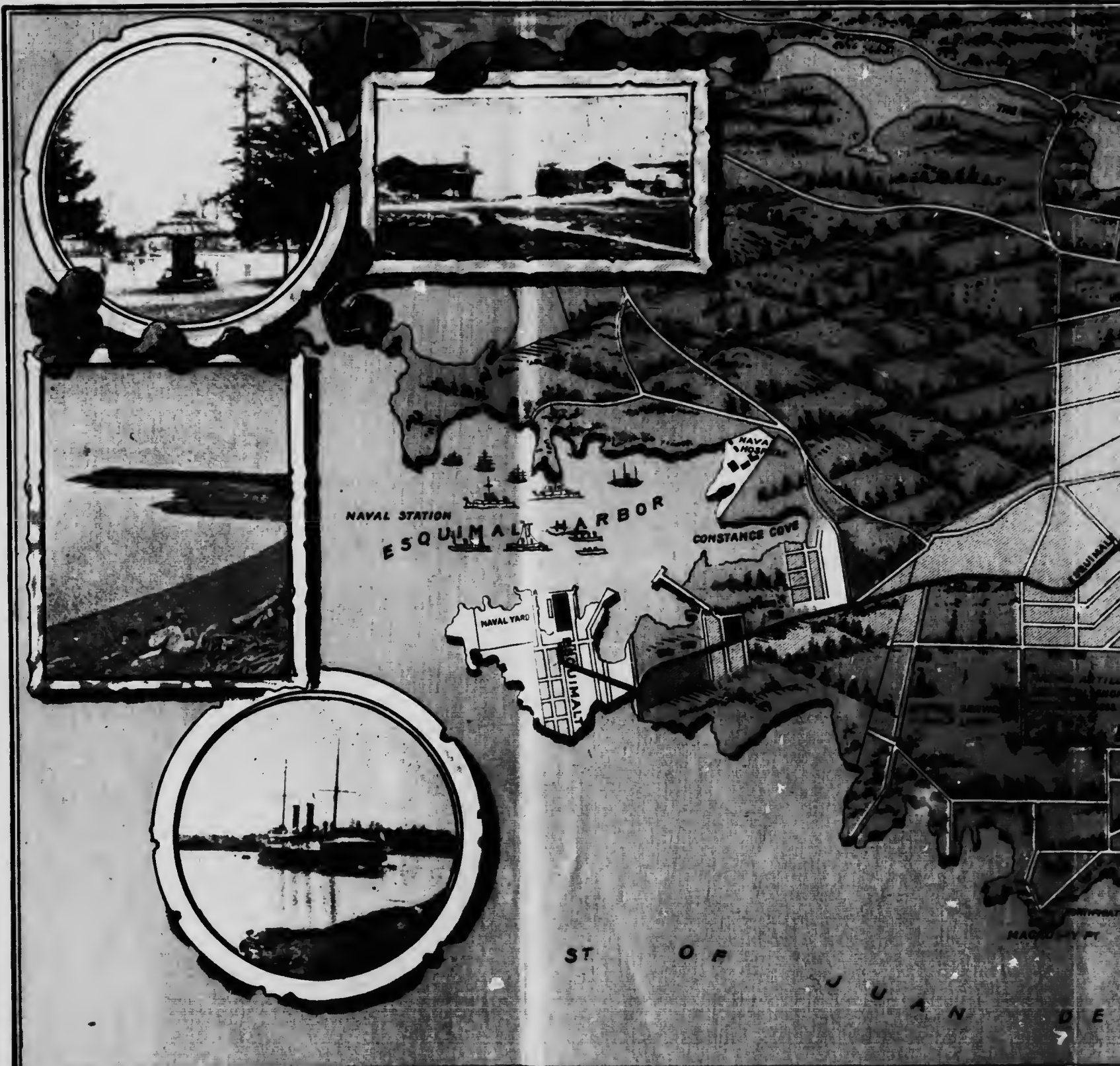
## The Oak Bay Recreation Grounds

—WITH ITS EXCELLENT—

### BICYCLE TRACK,

pronounced the finest on the Pacific Coast, and **Athletic Grounds**, are close by the terminus, and an attraction of sorts will usually afford the visitor some amusement.

Band Concerts are given at the Mount Baker Hotel during the summer in the evenings.



1 Goodacre Lake, Beacon Hill. 2 Ocean Beach, Clover Point. 3 Esquimalt Harbor. 4 Outer Wharf.





A N D E

F U C A



British Columbia Electric Railway Co.

— LIMITED —

... OPERATING ...

**STREET RAILWAYS**

IN THE CITIES OF

VICTORIA,

VANCOUVER AND

WESTMINSTER,

- AND BETWEEN -

VICTORIA & ESQUIMALT

- AND -

VANCOUVER & WESTMINSTER



**VICTORIA BRANCH**





