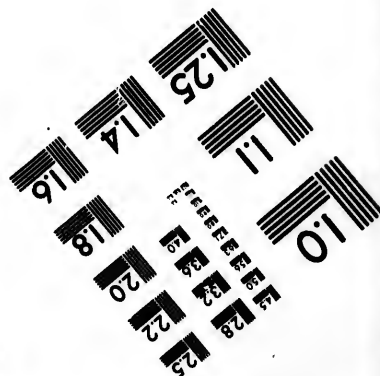
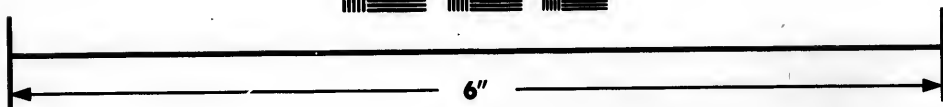
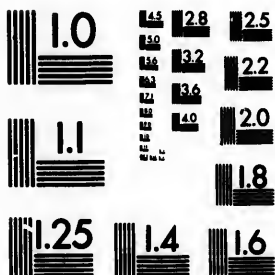


**IMAGE EVALUATION
TEST TARGET (MT-3)**



**Photographic
Sciences
Corporation**

23 WEST MAIN STREET
WEBSTER, N.Y. 14580
(716) 872-4503

15 12.8
16 13.2
17 13.6
18 14.0
19 14.4
20 14.8
21 15.2
22 15.6
23 16.0
24 16.4
25 16.8

**CIHM/ICMH
Microfiche
Series.**

**CIHM/ICMH
Collection de
microfiches.**



Canadian Institute for Historical Microreproductions / Institut canadien de microreproductions historiques

11
12
13
14
15
16
17
18
19
20
21
22
23
24
25

© 1985

Technical and Bibliographic Notes/Notes techniques et bibliographiques

The Institute has attempted to obtain the best original copy available for filming. Features of this copy which may be bibliographically unique, which may alter any of the images in the reproduction, or which may significantly change the usual method of filming, are checked below.

L'Institut a microfilmé le meilleur exemplaire qu'il lui a été possible de se procurer. Les détails de cet exemplaire qui sont peut-être uniques du point de vue bibliographique, qui peuvent modifier une image reproduite, ou qui peuvent exiger une modification dans la méthode normale de filmage sont indiqués ci-dessous.

- | | |
|--|--|
| <input type="checkbox"/> Coloured covers/
Couverture de couleur | <input checked="" type="checkbox"/> Coloured pages/
Pages de couleur |
| <input type="checkbox"/> Covers damaged/
Couverture endommagée | <input type="checkbox"/> Pages damaged/
Pages endommagées |
| <input type="checkbox"/> Covers restored and/or laminated/
Couverture restaurée et/ou pelliculée | <input type="checkbox"/> Pages restored and/or laminated/
Pages restaurées et/ou pelliculées |
| <input type="checkbox"/> Cover title missing/
Le titre de couverture manque | <input checked="" type="checkbox"/> Pages discoloured, stained or foxed/
Pages décolorées, tachetées ou piquées |
| <input type="checkbox"/> Coloured maps/
Cartes géographiques en couleur | <input type="checkbox"/> Pages detached/
Pages détachées |
| <input type="checkbox"/> Coloured ink (i.e. other than blue or black)/
Encre de couleur (i.e. autre que bleue ou noire) | <input checked="" type="checkbox"/> Showthrough/
Transparence |
| <input type="checkbox"/> Coloured plates and/or illustrations/
Planches et/ou illustrations en couleur | <input type="checkbox"/> Quality of print varies/
Qualité inégale de l'impression |
| <input type="checkbox"/> Bound with other material/
Relié avec d'autres documents | <input type="checkbox"/> Includes supplementary material/
Comprend du matériel supplémentaire |
| <input type="checkbox"/> Tight binding may cause shadows or distortion
along interior margin/
Le reliure serrée peut causer de l'ombre ou de la
distorsion le long de la marge intérieure | <input type="checkbox"/> Only edition available/
Seule édition disponible |
| <input type="checkbox"/> Blank leaves added during restoration may
appear within the text. Whenever possible, these
have been omitted from filming/
Il se peut que certaines pages blanches ajoutées
lors d'une restauration apparaissent dans le texte,
mais, lorsque cela était possible, ces pages n'ont
pas été filmées. | <input type="checkbox"/> Pages wholly or partially obscured by errata
slips, tissues, etc., have been refilmed to
ensure the best possible image/
Les pages totalement ou partiellement
obscurcies par un feuillet d'errata, une pelure,
etc., ont été filmées à nouveau de façon à
obtenir la meilleure image possible. |
| <input type="checkbox"/> Additional comments:/
Commentaires supplémentaires: | |

This item is filmed at the reduction ratio checked below/
Ce document est filmé au taux de réduction indiqué ci-dessous.

10X	14X	18X	22X	26X	30X
<input type="checkbox"/>	<input type="checkbox"/>	<input type="checkbox"/>	<input checked="" type="checkbox"/>	<input type="checkbox"/>	<input type="checkbox"/>
12X	16X	20X	24X	28X	32X

The copy filmed here has been reproduced thanks to the generosity of:

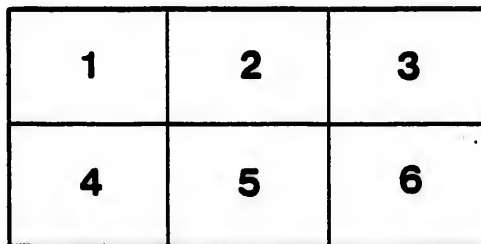
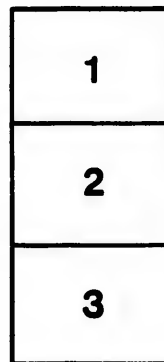
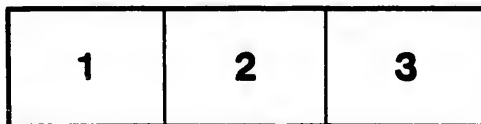
D. B. Weldon Library
University of Western Ontario
(Regional K.istory Room)

The images appearing here are the best quality possible considering the condition and legibility of the original copy and in keeping with the filming contract specifications.

Original copies in printed paper covers are filmed beginning with the front cover and ending on the last page with a printed or illustrated impression, or the back cover when appropriate. All other original copies are filmed beginning on the first page with a printed or illustrated impression, and ending on the last page with a printed or illustrated impression.

The last recorded frame on each microfiche shall contain the symbol \rightarrow (meaning "CONTINUED"), or the symbol ∇ (meaning "END"), whichever applies.

Maps, plates, charts, etc., may be filmed at different reduction ratios. Those too large to be entirely included in one exposure are filmed beginning in the upper left hand corner, left to right and top to bottom, as many frames as required. The following diagrams illustrate the method:



L'exemplaire filmé fut reproduit grâce à la générosité de:

D. B. Weldon Library
University of Western Ontario
(Regional History Room)

Les images suivantes ont été reproduites avec le plus grand soin, compte tenu de la condition et de la netteté de l'exemplaire filmé, et en conformité avec les conditions du contrat de filmage.

Les exemplaires originaux dont la couverture en papier est imprimée sont filmés en commençant par le premier plat et en terminant soit par la dernière page qui comporte une empreinte d'impression ou d'illustration, soit par le second plat, selon le cas. Tous les autres exemplaires originaux sont filmés en commençant par la première page qui comporte une empreinte d'impression ou d'illustration et en terminant par la dernière page qui comporte une telle empreinte.

Un des symboles suivants apparaîtra sur la dernière image de chaque microfiche, selon le cas: le symbole \rightarrow signifie "A SUIVRE", le symbole ∇ signifie "FIN".

Les cartes, planches, tableaux, etc., peuvent être filmés à des taux de réduction différents. Lorsque le document est trop grand pour être reproduit en un seul cliché, il est filmé à partir de l'angle supérieur gauche, de gauche à droite, et de haut en bas, en prenant le nombre d'images nécessaire. Les diagrammes suivants illustrent la méthode.

ails
du
odifier
une
page

rrata
to

pelure,
n à



32X

CALCUTT'S PATENT COMBINED LIQUID COOLER & HEATER.

DEAR SIR,

Some time since I placed one of my Beer Coolers in Copeland's Brewery, Toronto, in order both to test its capabilities as a Cooler, and the amount of liquid it could cool in a given time. I am now enabled to place before you a certificate of the result of Mr. Copeland's trial, and also a certificate of Messrs. Keefe & Co., of Toronto. These certificates speak for themselves. The parties are not amateurs in Brewing, but thorough practical men, who know the value of a good invention when placed before them.

It is needless my repeating here the several points of excellence contained in my Coolers, they are sufficiently set forth in the certificates of W. Copeland, Esq., and Messrs. Keefe & Co., Toronto, who have kindly consented to answer any references addressed to them. I may however mention that the Coolers are made to any size, to cool from one gallon to any amount required. The size to cool twenty-five barrels an hour is ten feet long, six feet high, and six inches wide. This size will readily tell you that it can be placed in any out of the way spot, in the centre of a building, up against a wall, or otherwise. The rapidity with which it does its work relieves the brewer of a great deal of anxiety, especially in very warm weather, when any amount of Ale can be cooled in a given time with a positive certainty. Then again the cleaning and scalding of one of these Coolers, of the size mentioned above, can be done in ten minutes, saving a large amount of labor, time and hot water in comparison with the old fashioned wooden Cooler. It entirely escapes the too frequent occurrence of tainted Ale, which every practical brewer knows is caused by the too long exposure of the liquid to the atmosphere.

References kindly permitted to

W. COPELAND, Esq. Toronto,

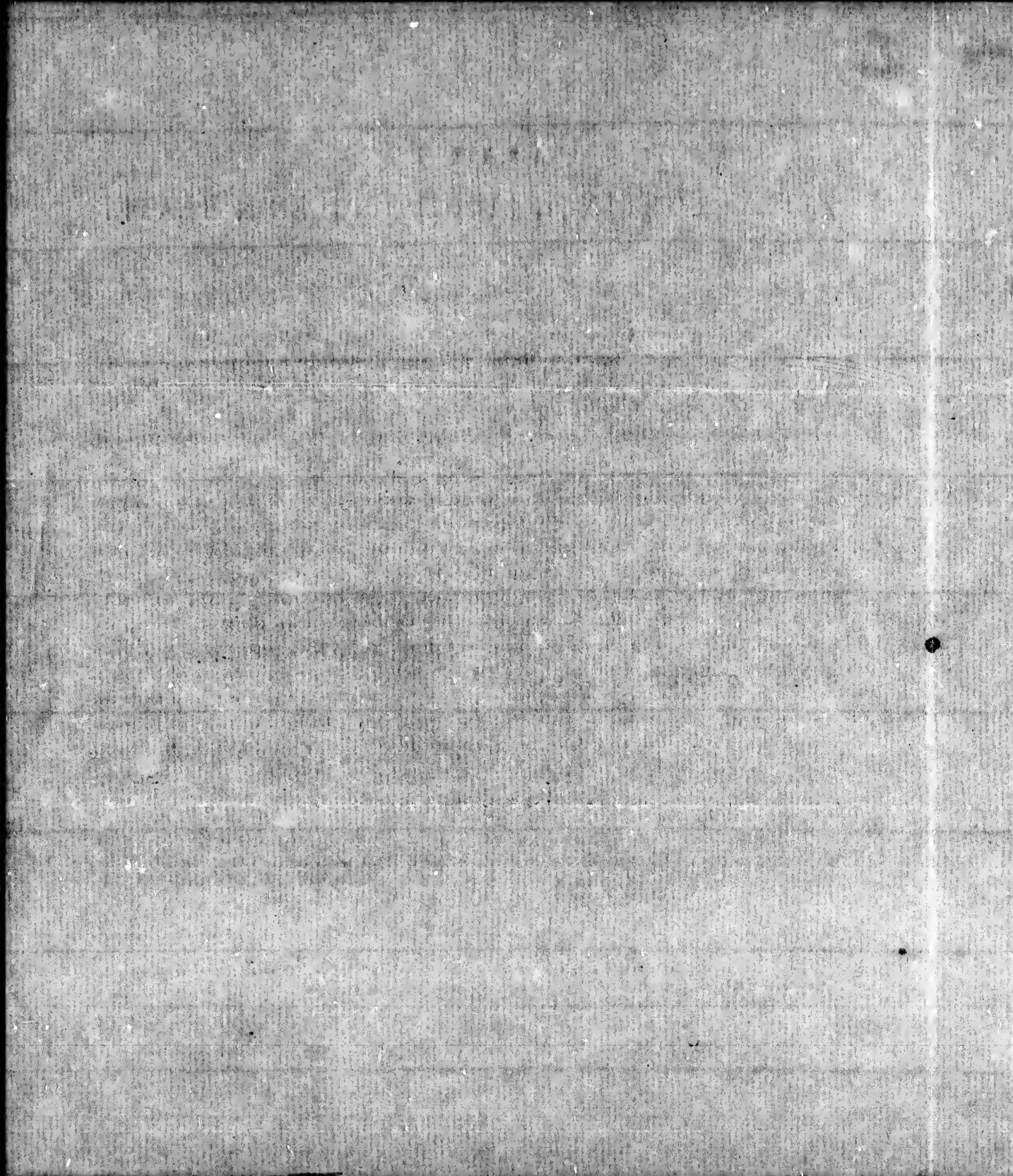
O. KEEFE & Co., Victoria Brewery, Toronto.

MOSS & WALLIS, Toronto,

K. CALCUTT, Esq., Cobourg.

P.S.—My Patent secures the right to manufacture and sell machines the principle of which is to cool Beer, Ale or other liquids, on the outside of a Tubular or Corrugated Apparatus, with cold water or ice, as described and shown; the same being also applicable to heating the feed water for Steam Boilers.

(See Certificates on third page.)



CERTIFICATES:

TORONTO, JULY 30th, 1864.

HENRY CALCUTT, Esq., Peterboro'.

Dear Sir:

I waited until I should give the Cooler a second trial, as I thought one scarcely enough to judge its merits by. I now think that for its size it does its work admirably, and can recommend it to any one as being the best Cooler that I have yet seen, both on account of its doing the work well, and being so easily cleaned, and also making no waste. I ran the worts to on the Cooler from the boiler, and had them all in the tun in an hour's time, there being about twenty-five barrels, which I think is quite enough at any season of the year. You can refer any one wishing to get one to me, or they can see it in operation here, which I think will satisfy them as to its merits.

Yours truly,

W. COPELAND.

VICTORIA BREWERY, Toronto, 3rd August, 1864.

HENRY CALCUTT, Esq., Peterboro',

Dear Sir,

We beg to inform you that we have seen your Patent Refrigerator in full operation, and we are of opinion that the Refrigerator that combines the greatest despatch in cooling and the greatest simplicity in construction, will be hailed as a boon by every Brewer in the Country.

Yours appears to us to be possessed of these qualities; it cools the Beer in an incredibly short space of time, and is the *easiest cleaned* of any we have yet seen, a very great desideratum. We have therefore much pleasure in ordering one from you,—to be put up as quickly as you possibly can.

We are, Dear Sir,

Very respectfully yours,

O. KEEFE & Co.

