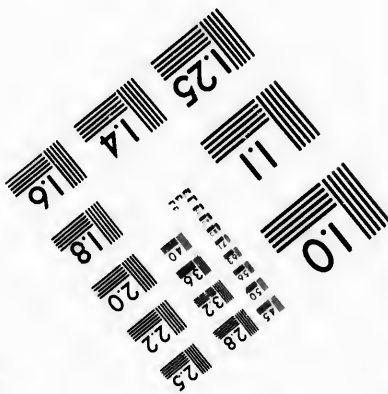
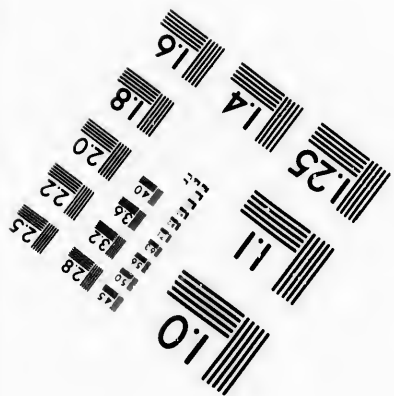
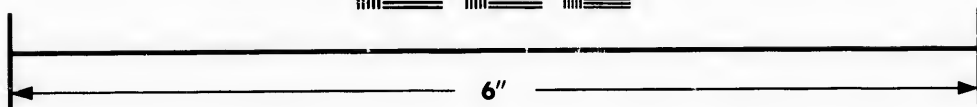
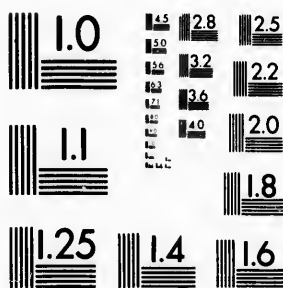


**IMAGE EVALUATION
TEST TARGET (MT-3)**



**Photographic
Sciences
Corporation**

23 WEST MAIN STREET
WEBSTER, N.Y. 14580
(716) 872-4503

15 28 25
16 32 22
18 20

**CIHM/ICMH
Microfiche
Series.**

**CIHM/ICMH
Collection de
microfiches.**



Canadian Institute for Historical Microreproductions / Institut canadien de microreproductions historiques

11 10
10

© 1982

Technical and Bibliographic Notes/Notes techniques et bibliographiques

The Institute has attempted to obtain the best original copy available for filming. Features of this copy which may be bibliographically unique, which may alter any of the images in the reproduction, or which may significantly change the usual method of filming, are checked below.

L'Institut a microfilmé le meilleur exemplaire qu'il lui a été possible de se procurer. Les détails de cet exemplaire qui sont peut-être uniques du point de vue bibliographique, qui peuvent modifier une image reproduite, ou qui peuvent exiger une modification dans la méthode normale de filmage sont indiqués ci-dessous.

- | | |
|--|--|
| <input checked="" type="checkbox"/> Coloured covers/
Couverture de couleur | <input type="checkbox"/> Coloured pages/
Pages de couleur |
| <input checked="" type="checkbox"/> Covers damaged/
Couverture endommagée | <input checked="" type="checkbox"/> Pages damaged/
Pages endommagées |
| <input type="checkbox"/> Covers restored and/or laminated/
Couverture restaurée et/ou pelliculée | <input type="checkbox"/> Pages restored and/or laminated/
Pages restaurées et/ou pelliculées |
| <input type="checkbox"/> Cover title missing/
Le titre de couverture manque | <input type="checkbox"/> Pages discoloured, stained or foxed/
Pages décolorées, tachetées ou piquées |
| <input type="checkbox"/> Coloured maps/
Cartes géographiques en couleur | <input type="checkbox"/> Pages detached/
Pages détachées |
| <input type="checkbox"/> Coloured ink (i.e. other than blue or black!)/
Encre de couleur (i.e. autre que bleue ou noire) | <input type="checkbox"/> Showthrough/
Transparence |
| <input type="checkbox"/> Coloured plates and/or illustrations/
Planches et/ou illustrations en couleur | <input type="checkbox"/> Quality of print varies/
Qualité inégale de l'impression |
| <input type="checkbox"/> Bound with other material/
Relié avec d'autres documents | <input type="checkbox"/> Includes supplementary material/
Comprend du matériel supplémentaire |
| <input type="checkbox"/> Tight binding may cause shadows or distortion
along interior margin/
La reliure serrée peut causer de l'ombre ou de la
distortion le long de la marge intérieure | <input type="checkbox"/> Only edition available/
Seule édition disponible |
| <input type="checkbox"/> Blank leaves added during restoration may
appear within the text. Whenever possible, these
have been omitted from filming/
Il se peut que certaines pages blanches ajoutées
lors d'une restauration apparaissent dans le texte,
mais, lorsque cela était possible, ces pages n'ont
pas été filmées. | <input type="checkbox"/> Pages wholly or partially obscured by errata
slips, tissues, etc., have been refilmed to
ensure the best possible image/
Les pages totalement ou partiellement
obscurcies par un feuillet d'errata, une pelure,
etc., ont été filmées à nouveau de façon à
obtenir la meilleure image possible. |
| <input type="checkbox"/> Additional comments:
Commentaires supplémentaires: | |

This item is filmed at the reduction ratio checked below/
Ce document est filmé au taux de réduction indiqué ci-dessous.

10X	14X	18X	22X	26X	30X	
<input type="checkbox"/>	<input type="checkbox"/>	<input type="checkbox"/>	<input checked="" type="checkbox"/>	<input type="checkbox"/>	<input type="checkbox"/>	
	12X	16X	20X	24X	28X	32X

The copy filmed here has been reproduced thanks to the generosity of:

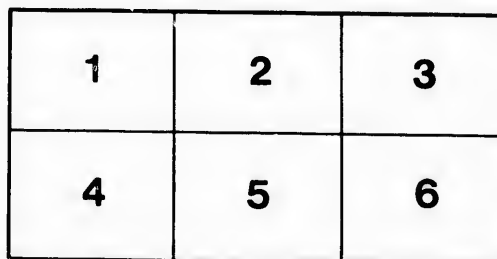
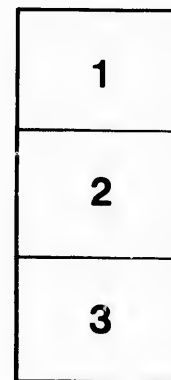
Library of Congress
Photoduplication Service

The images appearing here are the best quality possible considering the condition and legibility of the original copy and in keeping with the filming contract specifications.

Original copies in printed paper covers are filmed beginning with the front cover and ending on the last page with a printed or illustrated impression, or the back cover when appropriate. All other original copies are filmed beginning on the first page with a printed or illustrated impression, and ending on the last page with a printed or illustrated impression.

The last recorded frame on each microfiche shall contain the symbol → (meaning "CONTINUED"), or the symbol ▼ (meaning "END"), whichever applies.

Maps, plates, charts, etc., may be filmed at different reduction ratios. Those too large to be entirely included in one exposure are filmed beginning in the upper left hand corner, left to right and top to bottom, as many frames as required. The following diagrams illustrate the method:



L'exemplaire filmé fut reproduit grâce à la générosité de:

Library of Congress
Photoduplication Service

Les images suivantes ont été reproduites avec le plus grand soin, compte tenu de la condition et de la netteté de l'exemplaire filmé, et en conformité avec les conditions du contrat de filmage.

Les exemplaires originaux dont la couverture en papier est imprimée sont filmés en commençant par le premier plat et en terminant soit par la dernière page qui comporte une empreinte d'impression ou d'illustration, soit par le second plat, selon le cas. Tous les autres exemplaires originaux sont filmés en commençant par la première page qui comporte une empreinte d'impression ou d'illustration et en terminant par la dernière page qui comporte une telle empreinte.

Un des symboles suivants apparaîtra sur la dernière image de chaque microfiche, selon le cas: le symbole → signifie "A SUIVRE", le symbole ▼ signifie "FIN".

Les cartes, planches, tableaux, etc., peuvent être filmés à des taux de réduction différents. Lorsque le document est trop grand pour être reproduit en un seul cliché, il est filmé à partir de l'angle supérieur gauche, de gauche à droite, et de haut en bas, en prenant le nombre d'images nécessaire. Les diagrammes suivants illustrent la méthode.

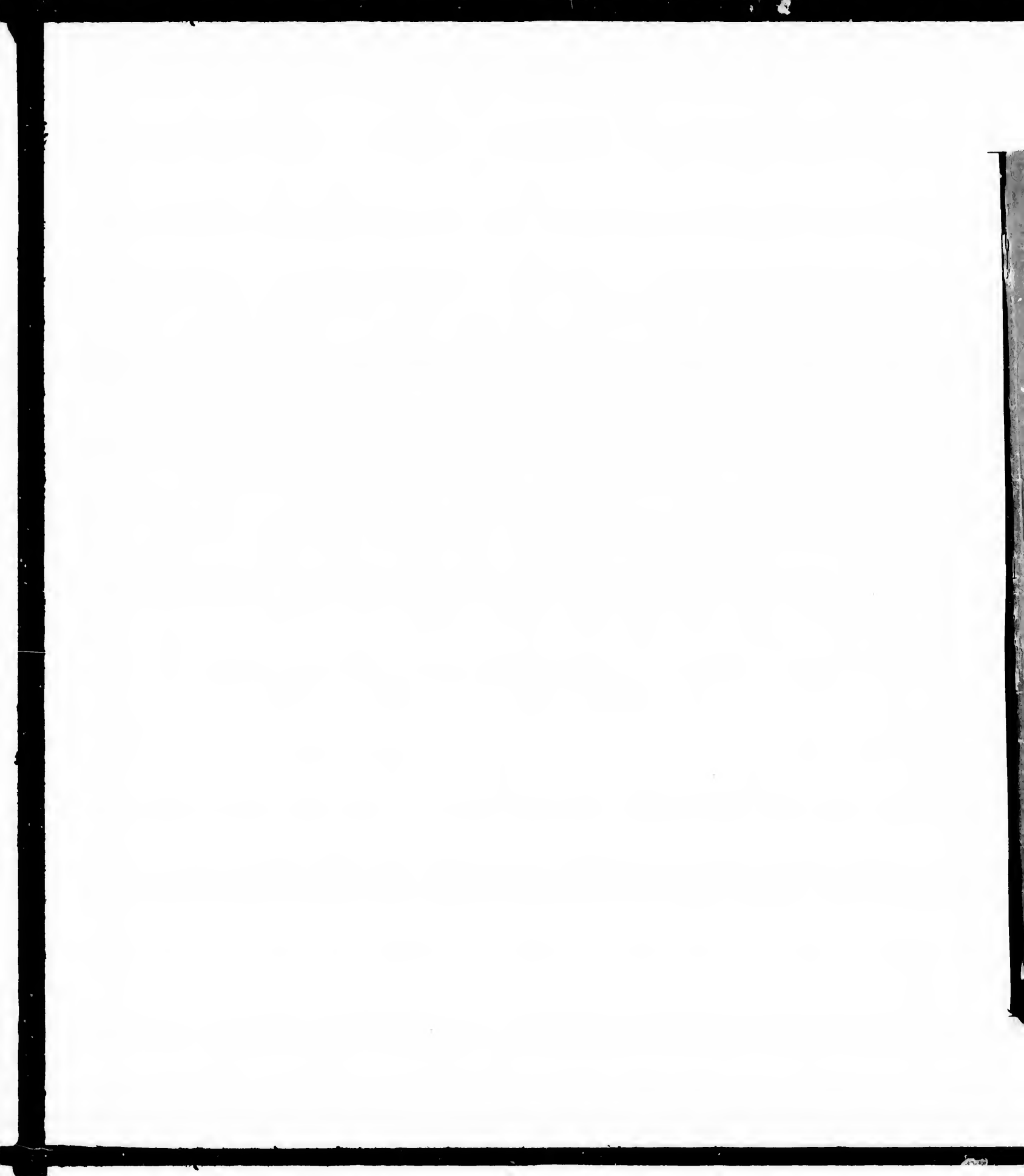
ails
du
difier
une
page

rrata
to

pelure,
on à



32X



SB 933
F 95

**SOME OF THE INSECTS THAT FREQUENT THE
ORCHARD AND GARDEN.**

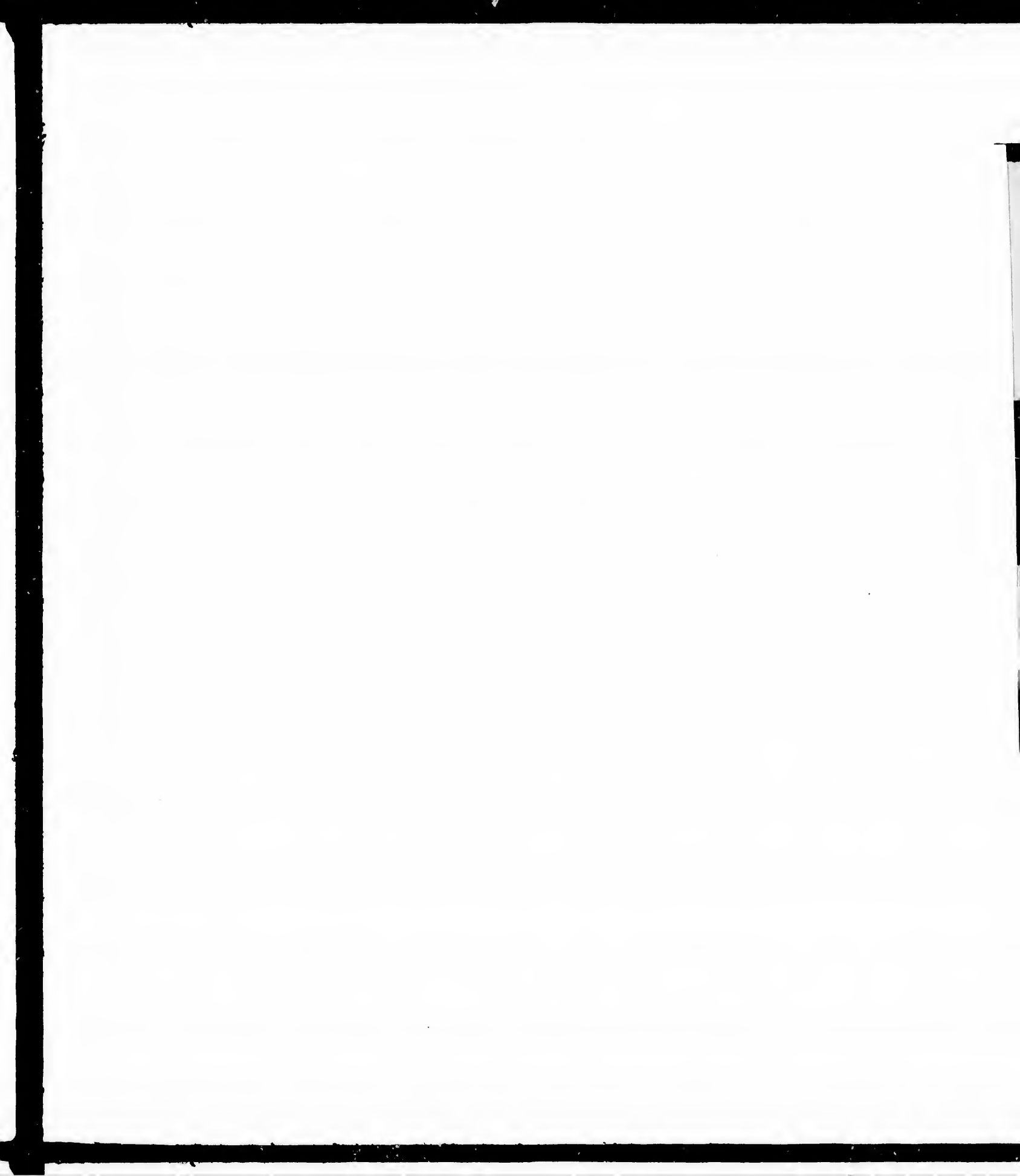
UNDER WHAT CIRCUMSTANCES THEY INCREASE UN-
DULY—WHAT INSECTS TO SPARE—WHAT TO KILL,
AND HOW TO KILL THEM—WITH OTHER
USEFUL INFORMATION.

BY REV. T. W. FYLES, COR. MEM. OF THE NAT. HIST. SOC.,
MONTREAL.

*Reprinted from the Fourth Report of the Montreal
Horticultural Society.*

MONTREAL :
"WITNESS" PRINTING HOUSE, 33, 35 & 37 BONAVENTURE STREET.

1879.



SOME OF THE INSECTS THAT FREQUENT THE ORCHARD AND GARDEN.

UNDER WHAT CIRCUMSTANCES THEY INCREASE UN-
DULY—WHAT INSECTS TO SPARE—WHAT TO KILL,
AND HOW TO KILL THEM—WITH OTHER
USEFUL INFORMATION.

BY REV. T. W. FYLES, COR. MEM. OF THE NAT. HIST. SOC.,
MONTREAL.

*Reprinted from the Fourth Report of the Montreal
Horticultural Society.*



Montreal :
"WITNESS" PRINTING HOUSE, 33, 35 & 37 BONAVENTURE STREET.

1879.

71

019 333

150

SOME OF THE INSECTS THAT FREQUENT THE
ORCHARD AND GARDEN.

Shall we wage indiscriminate war against insects ?

"The noxious insect that intrudes may die." This is the judgment of the poet Cowper, and it appears to be a reasonable one ; but we must not suppose that every insect is noxious, nor must we regard every appearance of an insect as an intrusion. It is well for the Fruit-grower and the Horticulturist to acquire a knowledge of Entomology, that they may be able to destroy *judiciously*. An indiscriminate slaughter of insects is an offence against Nature, "who, when she formed, designed them an abode."

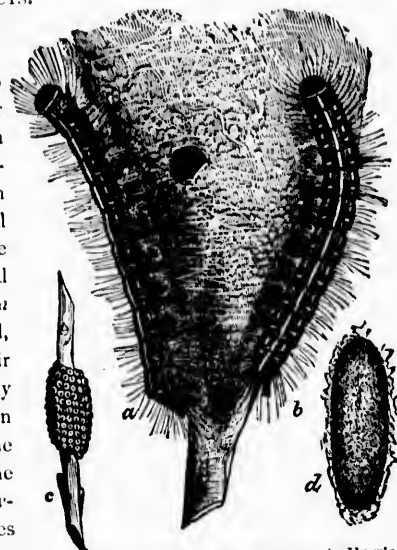
Consider the case of the caterpillar of the Willow-herb Sphinx (*Deilephila Chamenerii*):—

In neglected spots and corners the Willow-herb (*Epilobium angustifolium*) is wont to spring up. Feeding on this plant certain caterpillars of a formidable appearance, of a green or madder-brown hue, having two rows of orange spots down the back, and an anal horn, may often be met with. They grow to a considerable size. The ordinary gardener finding them would certainly kill them. But they are perfectly innocent. Their food-plant is of no value. The moth which they ultimately produce is very beautiful ; and, being one of the nectar-sipping insects, plays a useful part in the economy of nature by scattering pollen to aid in the fertilization of plants. A person killing the insect is not merely guilty of an act of unnecessary cruelty : he is destroying a friend.

Caterpillars found feeding on weeds, like those of *Tanessa Milberti* on Nettles, and *Danais Archippus* on Silk-weed should not be killed. The probability is that they will eat *nothing* but weeds.

HOW TO DESTROY INSECTS.

To destroy the troublesome *Clisiocampa Americana*, the best plan is to look, in the winter, for the patches of eggs on the twigs of the apple-trees, and to remove them with the thumb-nail, and then cast them into the fire. The red-humped caterpillars of *Notodonta concinna* will be found, in the early stages of their growth, lying closely packed, side by side, on a few of the leaves of the apple-tree. So will the striped caterpillars of *Pygæra ministra*. The leaves so occupied should be



Tent Caterpillar (*Clisiocampa Americana*)—Harris.
a, b, larvæ; c, cluster of eggs; d, cocoon.

picked and trodden with their burdens under foot. A free use of hellebore dissolved in water, and applied by means of the water-can and rose, will free the berry bushes and canes from the larvæ of Saw-flies and Geometrina. The war against Aphides should commence as early in the year as possible: for it should be borne in mind, that only every eighth or ninth generation of plant-lice indulges in connubiality. Winged males and females appear in the Autumn, (or early Spring). All the succeeding broods consist of wingless females, to the eighth generation. Males then appear again, to reorganize Aphidean society for another succession of broods. A little cluster of plant-lice, overlooked, will increase and widen its operations,

till at length a whole plant will suffer; whereas an early removal of it would have freed the plant for the whole season. The larger caterpillars should be carefully "hand-picked."



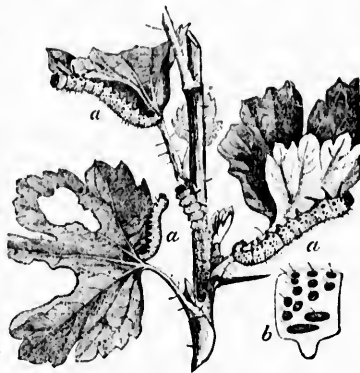
Imported Currant Worm.
Leaf showing eggs (1), and holes which the young worms make (2).

HOW IS IT THAT INSECTS SOMETIMES INCREASE UN-DULY?

Under a combination of favorable circumstances, insect tribes will increase, in some instances to an alarming extent, and then, after a time of ascendancy, dwindle away till they all but disappear. The introduction of

a species from a distant place is usually followed by a rapid increase of that species. This probably is largely owing to the absence of the natural counter-checks to its kind, *ichneumons*, &c.

An English naturalist, on his arrival in this country some years ago, could not fail to notice the paucity of white butterflies. A few specimens of *Pieris oleracea* would be all that he could meet with. But about the year 1838 the smaller Cabbage Butterfly (*Pieris rapae*) was introduced from Europe, probably in cabbages thrown out from the steamships. In a few years it overspread the land, and great was the consternation it excited. I knew a farmer who, having noticed the exuviae of the



Imported Currant Worm.
a, a, a, larve; b, a magnified joint of body showing black tubercles.

Vernonia
ould not
weeds.



a) - Harris.
cocoon.

solved in
will free
-flies and
ce as early
that only
connubi-
, (or early
s females,
reorganize
ttle cluster
operations,

caterpillars on his cabbages, would not keep the vegetables for his own consumption but kindly vended them in the neighboring villages, because, as he told his friends in confidence, *he was sure they were unfit for food.*

The introduction of the English House Fly to New Zealand was followed by so startling an increase as to attract the notice even of the Maories, who, in one of their songs, says—

“As the Pakeha fly has driven out the Maori fly,
As the Pakeha grass has killed the Maori grass,
As the Pakeha clover has slain the Maori fern,
So will the Pakeha destroy the Maori.”

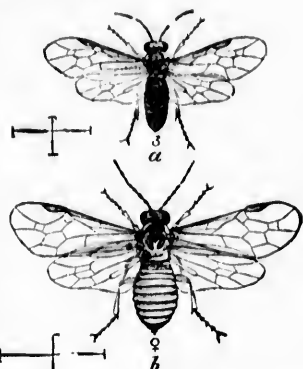
In America we have had never-to-be-forgotten instances of the rapid increase of imported insects, in the Hessian fly—supposed to have been brought over in straw, to Staten Island, by the troops under Sir W. Howe, and the Potato Beetle—for the migration of which, from the slopes of the Rocky Mountains, settlers unwittingly bridged the prairies.

The Acclimatisation Society has not accomplished unmixed good. The dreaded Phylloxera, which is ravaging the vineyards of Europe, is believed to have been carried there with new varieties of vines from America.

The opening up of a country increases the numbers of many of the insect tribes; and so does a succession of fine seasons.

Insectivorous creatures should be protected.

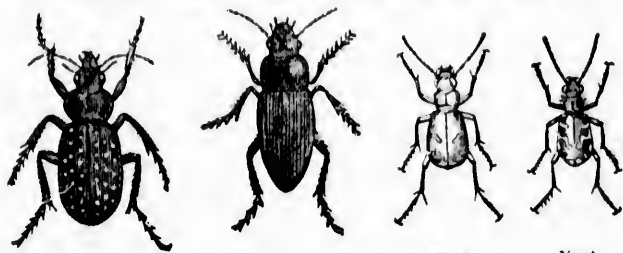
The destruction of predatory tribes of animals, birds, and insects, is often followed by a dangerous increase of the plant consumers. The man who shoots the woodpeckers may look for an increase of destructive “borers”; and he who drives away the Tits may expect trouble from a variety of pests. Once upon a



Imported Currant Worm (*Nematus vitisana*)—Klug.
a, male; *b*, female, the hair lines showing natural size.

time the farmers of Rhode Island having waged successful war against the Purple Grackle were brought to see the folly of their proceedings by the rapid increase of the grubs of Melolonthidae, and other beetles, which destroyed their meadows by consuming the roots of the grasses, rendering it necessary for them to import hay in large quantities. It is not generally known that the skunk consumes numbers of these troublesome beetles in their imago or perfect state.

Among the predatory insects which may be ranked as the



No. 1. Flery Ground Beetle (*Colosoma Collidum*). 2. Musky Ground Beetle (*Harpalus Coliphonus*). 3. Purple Tiger Beetle (*Cicindela purpurea*). 4. Halcy necked Tiger Beetle (*Cicindela Hirticollis*)

gardener's friends, distinguished places are held by the Ground Beetles (*Carabidae*), and Tiger Beetles (*Cicindelidae*); by the Ichneumons (*Ichneumonidae*), and Sand Wasps (*Sphagidae*), &c.,



No. 5. a. b. 6. Lacewinged Fly (*Chrysopa*). Egg, Larva and Fly. 7. Spotted Lady-bird (*Hippodamia Maculata*). 8. 11-spotted Lady-bird (*Hippodamia 11-punctata*)

which prey on larvæ; by the *Proctotrupidae*, which destroy the eggs of insects; by the Hawk-flies (*Syrphidae*), Lace-winged flies (*Hemerobiidae*), and Lady-birds (*Coccinellidae*), which prey on plant-lice.

The larger caterpillars that infest the orchard and garden are particularly liable to attacks from ichneumons. I have seen fifty ichneumon grubs bite their way through from the inside of a *Smerinthus* larva. On examining a cocoon of *Attacus Cecropia*, I have found the whole space, which should have been filled with the pupa of the moth, occupied by a compact mass of ichneumon cocoons.

SOME OF THE LARGER INSECTS FREQUENTING THE ORCHARD AND GARDEN WHICH HAVE APPARENTLY BECOME MORE NUMEROUS IN THE E. T. IN THE LAST FEW YEARS.

PHILAMPELUS ACHEMON.

This creature, in the larva state, grows to be three or four inches long. It is remarkable for the swollen appearance of the fourth segment of its body, and for the power which it has of protruding and drawing in its head and first three segments. Caterpillars of like build are known in England by the names of *Elephant* and *Hog* caterpillars. The creature loses its horn in an early stage of its existence, but retains a raised spot where the horn fell away. Its natural food is the Virginia Creeper (*Ampelopsis quinquefolia*), but as its name (*Φιλάμπελος*) implies, *it loves the vine*.

A very beautiful and perfect specimen of the moth was taken two or three years ago, in a frame, at the foot of a large vine in the garden of Col. Hall, at East Farnham. Last season the caterpillars were rather numerous in this neighborhood.

CHÆROCAMPA PAMPINATRIX.

This species is closely allied to the preceding. I have taken the caterpillar in Brome feeding on the Creeper. In Ontario it does much mischief, but in the E. T. it is at present a rarity. In color it is green or brown; and it has a row of orange spots on the back. Its fourth and fifth segments are much swollen, and its head is very small. Its appearance suggested its name—*Chærocampa* (*χαιρος*—a pig, *Καμπη*—a caterpillar). It is one of the "Hog Caterpillars."

SPHINX QUINQUEMACULATA.

THE TOMATO WORM.

The larva of the Five Spotted Hawk Moth is one of those called Sphinx Caterpillars from the resemblance which they are supposed to bear to the Egyptian Sphinx. Under the name "Tomato Worm" it has been much vilified by newspaper correspondents. Beyond, however, feeding upon our tomatoes and other Solanaceous plants it does us no hurt. It is green, and has transverse side-lines of a lighter shade. Its spiracles are conspicuous, and it has a horn of formidable appearance. It grows to be three inches or more in length. As is the case with most of the sphinges the position of the Tomato Worm is often betrayed by the accumulations of its peculiarly moulded excrement. When full-fed the creature descends into the earth, and there forms a cist in which to pass the pupa stage of its existence. The chrysalis has a remarkable proboscis-case resembling the handle of a pitcher. The moth is a very large grey moth having five yellow spots along each side of the abdomen.

SPHINX SALVIFÆ.

THE SAGE WORM.

This insect attains its full growth in September. As I have not met with an account of the larva in any of the Entomological works I have seen, I will describe it minutely. It is sepia-colored—slightly granulated like "Shagreen," and has a varnished appearance. Its anal horn is black, and rather small. The first segments to a limit beyond the pro-legs are horn-colored and semi-transparent, bearing two black, shield-shaped spots, the hinder of which is much larger than the former. The pro-legs are black. The creature has whitish transverse side-lines—the hindmost being broader than any of the others. The spiracles are black. The head has two longitudinal whitish lines.

The moth in some respects resembles the Zebra Hawk Moth (*Sphinx Kalmiæ*); but its general coloring is much darker. It is like *Sphinx eremitus*, of Hübner; the *S. sordida*, of the Smithsonian catalogue.

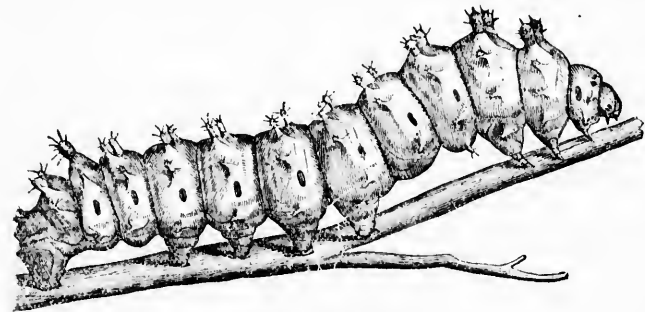
SMERINTHUS EXCÆCATUS.
THE BLIND-EYED SMERINTHIUS.

The *Excæcatus* caterpillar, which feeds on the apple-tree, and sometimes damages young trees in the nursery, may be known by its granulated appearance and its triangular head. It is of a light green, and has a stout horn. The moth is a beautiful object, and has rosy hind wings, ornamented with eye-like spots.

Of the other members of the family *Smerinthus*, I have taken in this neighborhood *S. Geminata*, *S. Myops*, *S. Juglandis*, and *S. Cerisyi*. They feed on various trees that are met with round our homesteads, but can hardly be said to be injurious. The last named is one of our rarest moths.

ATTACUS CECROPLA.

The caterpillar of this magnificent insect is the largest of those that attack our apple-trees. It will thrive also on the plum and the cherry. It grows to be four inches in length, and as thick as a man's thumb. In color, it is bright green, and it is ornamented with egg-shaped warts set with short, black spines, and variously colored—coral-red, yellow, and blue. It is a voracious feeder. A



The Cecropia Caterpillar.

friend of mine observed the growth of three individuals of the species daily, till they reached their full size. They were feeding on an apple-tree outside his window; and, in the still summer evenings, the sound of their munching was plainly heard from his

position twenty feet away. These insects afforded him opportunities for witnessing the progress of sloughing. After the head was freed, the skin was worked backward. First one segment of the body was expanded and contracted alternately, till quite free, then the next, and so on, till the change of dress was completed. The skin even of the small spines on the warts of the creature came away. The whole process occupied 20 minutes.

The cocoon of *Attacus Cecropia* is a marvel of comfortable security. The creature, when spinning it, has the power of assimilating it, in color, to surrounding objects. I have before me a cocoon which was spun by a larva confined in a white box, and is itself perfectly white, and another, which is of the warm brown of the bark and dried leaves of the red cherry tree to a twig of which it was attached.

I saw, when a boy, a case of these insects and their cocoons, in the Crystal Palace Exhibition, in Hyde Park, where attention was drawn to them with a view to a possible silk-manufacture. So long ago as 1759, the Rev. S. Pullett made silk stockings from *Cecropia* silk, and published his observations in the Philosophical Transactions of the Royal Society. The obstacle in the way of utilizing the silk seems to be the difficulty of unwinding the cocoons. It has been suggested that they should be soaked in weak lye, to which slaked lime has been added; and that the silk should be heckled and spun. The cocoons of a near relative of *Cecropia*, the Ailanthus moth (*Attacus ricini*), of Farther India, which feeds on the Palma Christi (*Ricinus communis*), are carded and spun like cotton, and the stuff formed from them is of incredible durability.

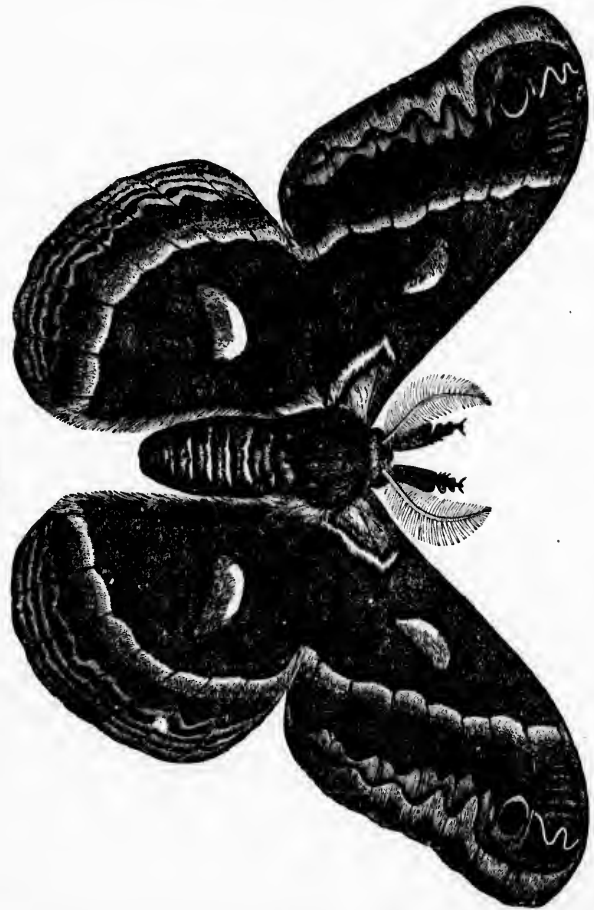
Attacus Cecropia, in its perfect state, is a beautiful and stately object. Its prevailing colors are black, white, and Indian red, and these are presented both in broad contrasts and harmonious blendings, in a variety of cloudings, wavelets, lunes and spots. But owing to its nocturnal habits, the creature is seldom seen. The nearest approach that many a one has made to an acquaintance with the *Cecropia* moth, has been the noticing of a bat-like object flitting through the gloom of a summer night.



ls of the
e feeding
summer
from his

These six are the largest caterpillars that usually trouble our

The Cecropia Moth.



gardens and orchards in the Province of Quebec. As in their perfect state some of the insects would be looked upon as *desiderata*

by many an entomologist, I would recommend horticulturists not to crush them out of existence when they fall in with them, but to pack them off uninjured to some entomologist of their acquaintance. By so doing they will, possibly, both save their trees and advance the cause of science.

ble our

in their
considerata

MONTREAL :
"WITNESS" PRINTING HOUSE, BONAVENTURE ST.





