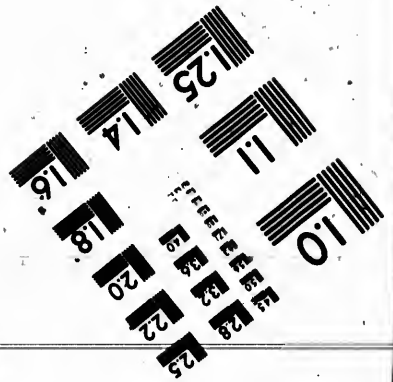
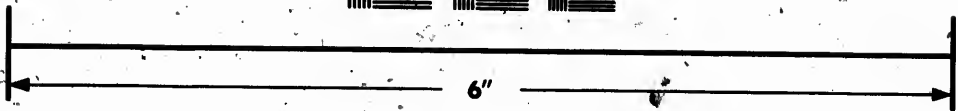
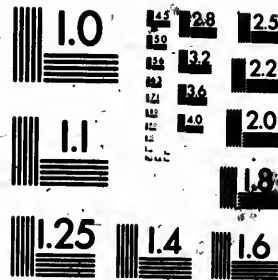


**IMAGE EVALUATION
TEST TARGET (MT-3)**



**Photographic
Sciences
Corporation**

23 WEST MAIN STREET
WEBSTER, N.Y. 14580
(716) 872-4503

125
?

**CIHM
Microfiche
Series
(Monographs)**

**ICMH
Collection de
microfiches
(monographies)**



Canadian Institute for Historical Microreproductions / Institut canadien de microreproductions historiques

© 1991

Technical and Bibliographic Notes / Notes techniques et bibliographiques

The Institute has attempted to obtain the best original copy available for filming. Features of this copy which may be bibliographically unique, which may alter any of the images in the reproduction, or which may significantly change the usual method of filming, are checked below.

L'Institut a microfilmé le meilleur exemplaire qu'il lui a été possible de se procurer. Les détails de cet exemplaire qui sont peut-être uniques du point de vue bibliographique, qui peuvent modifier une image reproduite, ou qui peuvent exiger une modification dans la méthode normale de filmage sont indiqués ci-dessous.

- Coloured covers/
Couverture de couleur
- Covers damaged/
Couverture endommagée
- Covers restored and/or laminated/
Couverture restaurée et/ou pelliculée
- Cover title missing/
Le titre de couverture manque
- Coloured maps/
Cartes géographiques en couleur
- Coloured ink (i.e. other than blue or black)/
Encre de couleur (i.e. autre que bleue ou noire)
- Coloured plates and/or illustrations/
Planches et/ou illustrations en couleur
- Bound with other material/
Relié avec d'autres documents
- Tight binding may cause shadows or distortion
along interior margin/
La reliure serrée peut causer de l'ombre ou de la
distorsion le long de la marge intérieure
- Blank leaves added during restoration may appear
within the text. Whenever possible, these have
been omitted from filming/
Il se peut que certaines pages blanches ajoutées
lors d'une restauration apparaissent dans le texte,
mais, lorsque cela était possible, ces pages n'ont
pas été filmées.

- Coloured pages/
Pages de couleur
- Pages damaged/
Pages endommagées
- Pages restored and/or laminated/
Pages restaurées et/ou pelliculées
- Pages discoloured, stained or foxed/
Pages décolorées, tachetées ou piquées
- Pages detached/
Pages détachées
- Showthrough/
Transparence
- Quality of print varies/
Qualité inégale de l'impression
- Continuous pagination/
Pagination continue
- Includes index(es)/
Comprend un (des) index

Title on header taken from: /
Le titre de l'en-tête provient:

- Title page of issue/
Page de titre de la livraison
- Caption of issue/
Titre de départ de la livraison
- Masthead/
Générique (périodiques) de la livraison

- Additional comments: /
Commentaires supplémentaires:

This item is filmed at the reduction ratio checked below /
Ce document est filmé au taux de réduction indiqué ci-dessous.

10X	14X	18X	22X	26X	30X
<input type="checkbox"/>	<input type="checkbox"/>	<input type="checkbox"/>	<input type="checkbox"/>	<input checked="" type="checkbox"/>	<input type="checkbox"/>
12X	16X	20X	24X	28X	32X

The copy filmed here has been reproduced thanks to the generosity of:

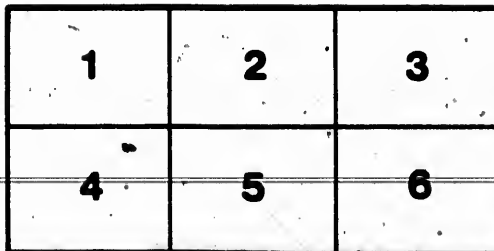
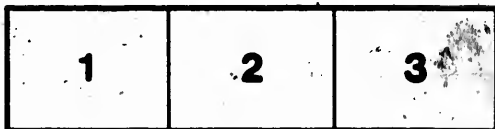
Library of the National Archives of Canada

The images appearing here are the best quality possible considering the condition and legibility of the original copy and in keeping with the filming contract specifications.

Original copies in printed paper covers are filmed beginning with the front cover and ending on the last page with a printed or illustrated impression, or the back cover when appropriate. All other original copies are filmed beginning on the first page with a printed or illustrated impression, and ending on the last page with a printed or illustrated impression.

The last recorded frame on each microfiche shall contain the symbol \rightarrow (meaning "CONTINUED"), or the symbol ∇ (meaning "END"), whichever applies.

Maps, plates, charts, etc., may be filmed at different reduction ratios. Those too large to be entirely included in one exposure are filmed beginning in the upper left hand corner, left to right and top to bottom, as many frames as required. The following diagrams illustrate the method:



L'exemplaire filmé fut reproduit grâce à la générosité de:

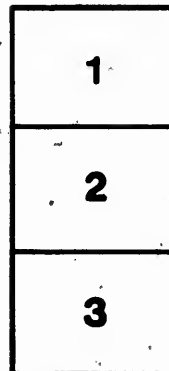
La bibliothèque des Archives nationales du Canada

Les images suivantes ont été reproduites avec le plus grand soin, compte tenu de la condition et de la netteté de l'exemplaire filmé, et en conformité avec les conditions du contrat de filmage.

Les exemplaires originaux dont la couverture en papier est imprimée sont filmés en commençant par le premier plat et en terminant soit par la dernière page qui comporte une empreinte d'impression ou d'illustration, soit par le second plat, selon le cas. Tous les autres exemplaires originaux sont filmés en commençant par la première page qui comporte une empreinte d'impression ou d'illustration et en terminant par la dernière page qui comporte une telle empreinte.

Un des symboles suivants apparaîtra sur la dernière image de chaque microfiche, selon le cas: le symbole \rightarrow signifie "A SUIVRE", le symbole ∇ signifie "FIN".

Les cartes, planches, tableaux, etc., peuvent être filmés à des taux de réduction différents. Lorsque le document est trop grand pour être reproduit en un seul cliché, il est filmé à partir de l'angle supérieur gauche, de gauche à droite, et de haut en bas, en prenant le nombre d'images nécessaires. Les diagrammes suivants illustrent la méthode.



Vol. 37

ORIGINAL AND ONLY GENUINE SAINT GERMAIN German Study or Office Lamp.

C. A. KLEEMANN'S PATENT.

Prize-Medal of the American Institute Exhibition, Oct. 26, 1867.

Diploma of the "Pennsylvania State Fair," 1866.

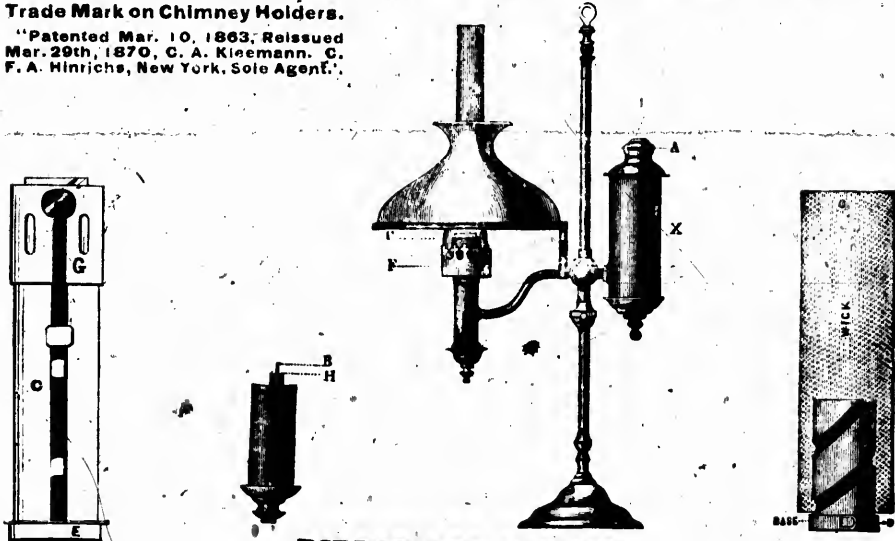
First Diploma of the Kings County Fair, 1872.

LIGHT ! MORE LIGHT !

Best, Safest, Handsomest, Most Economical. No Odor, no Smoke. Pure, Brilliant, Unwavering Light, very agreeable to the Eye. None Genuine without my name on Chimney-Holder. This Lamp is all of METAL, Easily Managed.

Trade Mark on Chimney Holders.

"Patented Mar. 10, 1863; Reissued Mar. 29th, 1870, C. A. Kleemann. C. F. A. Hinrichs, New York, Sole Agent."



DIRECTIONS FOR USE.

To fill the Lamp, take out the Holder, *A*, invert it and pour in the Oil till it reaches the valve; then pull up the valve by means of the wire *B*, invert it, holding it above the holder *X* so that any oil which may escape drops into this Holder; replace it in the Holder *X*. To put on the wick, take off the Chimney holder *F*; take out the Cylinder *C*, take out the smallest Cylinder *D*, tie the wick at the base of Cylinder *D*, then replace the Cylinder *D* in the large one *C*, taking care to push it down as far as the point *E*. Replace everything as before, the large Cylinder *C* having the Brass catches *G* up and the Ring *E* down. To raise the wick turn the Chimney-holder.

This Lamp gives a very superior and steady light, and with ordinary care will emit no smell, no smoke. One-twelfth, or one eighth of a heavier oil, Sperm, Lard or Olive, mixed with Kerosene, makes a most and safest oil.

Testimonials have been given by highest authority as to its safety against explosions.

Besides the above pattern Lamps, in Brass, as well as in German Silver, I also have Lamps with two burners or Double Lamps; also, Bracket or Side Lamps, and Double Hanging Lamps or Keroseniers, all with the same St. Germain patent burners.

The wick should be trimmed regularly. If a crust has formed, do not disturb it, but only remove any little point or unevenness that may occur; do not use the scissors unless the wick, through uneven draft, should have coaled or charred unevenly. By this method you will have an even flame, and the wick will last much longer than when cut frequently. If your Lamp should make a humming noise, which is caused by the shank of the chimney being of the wrong length, raise the chimney slightly, or change it for one with a longer shank.

Use kerosene or spirits in place of water for cleaning chimneys. The brass part of the Lamp may be cleaned with Vienna lime and kerosene, and polished with rouge.

N. B. Parties returning lamps for repair will please see that every lamp is properly labelled, with name and address, and also with the complaint. As there are now being offered to the public, worthless articles, purporting to be chimneys and wicks designed to be used on my

ST. GERMAIN LAMP, but really intended to injure its sale, particular attention is called to use a proper sized chimney and wick. Size of chimney for No. 1 Lamp, full length, about 10 inches, shank or wire, part, 2 inches high, opening in the neck not less than 3/4 inch clear diameter. The chimney for No. 2 Lamp has to be about the same size, except the diameter of shank should only be 1/2 inch to fit in the holder. Wicks have to be large enough to fit close to the wick holder. A too large wick will be apt to crease or fold and give an uneven circle of light, while burning, besides such a wick will draw the oil quicker than it can be consumed by the flame.

FOR SALE BY

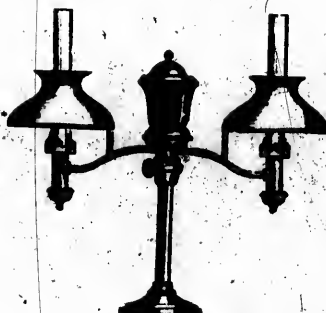
DOUGLAS & MONIECE, MONTREAL, CANADA.



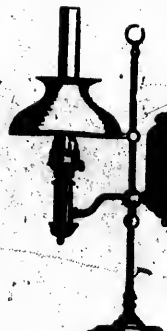
No. 2.



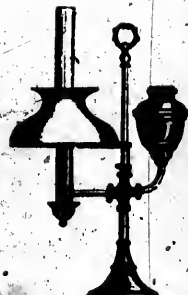
No. 1.



No. 1a.



No. 3a.



No. 31.



No. 2.



No. 2b.



No. 2c.



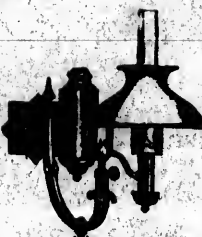
No. 2d.



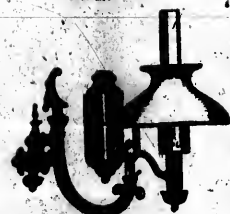
No. 2e.



No. 17.



No. 16.



No. 18.



6 & 7 inch Vienna Shade.



6 & 7 inch Dome Shade.



No. 12.



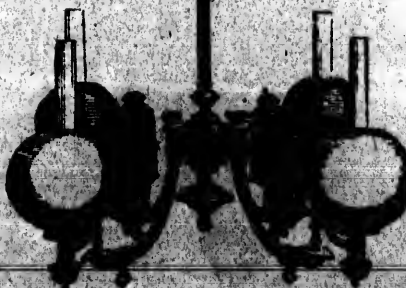
6 & 7 inch Frosted Porcelain Shade.



6 & 7 inch Flat Shade.



No. 13 and 14.



No. 15.

