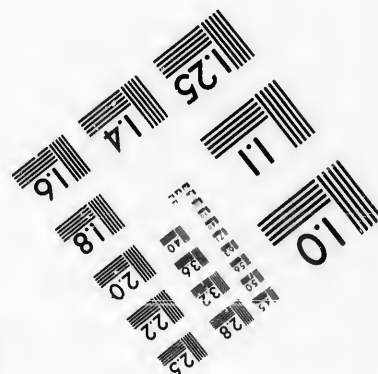
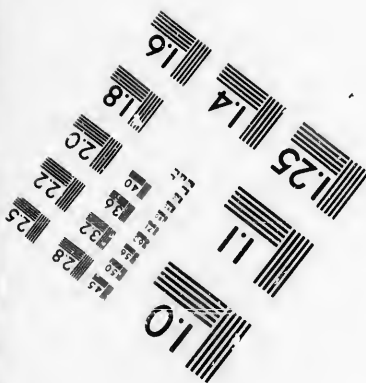
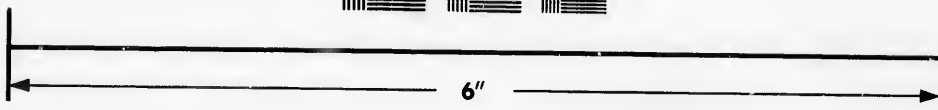
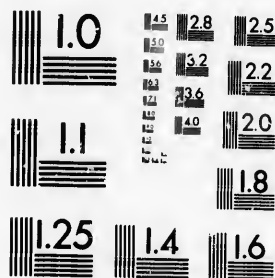


**IMAGE EVALUATION
TEST TARGET (MT-3)**



**Photographic
Sciences
Corporation**

23 WEST MAIN STREET
WEBSYER, N.Y. 14580
(716) 872-4503

**CIHM/ICMH
Microfiche
Series.**

**CIHM/ICMH
Collection de
microfiches.**



Canadian Institute for Historical Microreproductions / Institut canadien de microreproductions historiques

© 1986

Technical and Bibliographic Notes/Notes techniques et bibliographiques

The Institute has attempted to obtain the best original copy available for filming. Features of this copy which may be bibliographically unique, which may alter any of the images in the reproduction, or which may significantly change the usual method of filming, are checked below.

L'Institut a microfilmé le meilleur exemplaire qu'il lui a été possible de se procurer. Les détails de cet exemplaire qui sont peut-être uniques du point de vue bibliographique, qui peuvent modifier une image reproduite, ou qui peuvent exiger une modification dans la méthode normale de filmage sont indiqués ci-dessous.

- | | |
|--|--|
| <input checked="" type="checkbox"/> Coloured covers/
Couverture de couleur | <input type="checkbox"/> Coloured pages/
Pages de couleur |
| <input type="checkbox"/> Covers damaged/
Couverture endommagée | <input type="checkbox"/> Pages damaged/
Pages endommagées |
| <input type="checkbox"/> Covers restored and/or laminated/
Couverture restaurée et/ou pelliculée | <input type="checkbox"/> Pages restored and/or laminated/
Pages restaurées et/ou pelliculées |
| <input type="checkbox"/> Cover title missing/
Le titre de couverture manque | <input checked="" type="checkbox"/> Pages discoloured, stained or foxed/
Pages décolorées, tachetées ou piquées |
| <input type="checkbox"/> Coloured maps/
Cartes géographiques en couleur | <input checked="" type="checkbox"/> Pages detached/
Pages détachées |
| <input type="checkbox"/> Coloured ink (i.e. other than blue or black)/
Encre de couleur (i.e. autre que bleue ou noire) | <input checked="" type="checkbox"/> Showthrough/
Transparence |
| <input type="checkbox"/> Coloured plates and/or illustrations/
Planches et/ou illustrations en couleur | <input type="checkbox"/> Quality of print varies/
Qualité inégale de l'impression |
| <input type="checkbox"/> Bound with other material/
Relié avec d'autres documents | <input type="checkbox"/> Includes supplementary material/
Comprend du matériel supplémentaire |
| <input type="checkbox"/> Tight binding may cause shadows or distortion
along interior margin/
La reliure serrée peut causer de l'ombre ou de la
distorsion le long de la marge intérieure | <input type="checkbox"/> Only edition available/
Seule édition disponible |
| <input type="checkbox"/> Blank leaves added during restoration may
appear within the text. Whenever possible, these
have been omitted from filming/
Il se peut que certaines pages blanches ajoutées
lors d'une restauration apparaissent dans le texte,
mais, lorsque cela était possible, ces pages n'ont
pas été filmées. | <input type="checkbox"/> Pages wholly or partially obscured by errata
slips, tissues, etc., have been refilmed to
ensure the best possible image/
Les pages totalement ou partiellement
obscurcies par un feuillet d'errata, une pelure,
etc., ont été filmées à nouveau de façon à
obtenir la meilleure image possible. |
| <input type="checkbox"/> Additional comments:/
Commentaires supplémentaires: | |

This item is filmed at the reduction ratio checked below/
Ce document est filmé au taux de réduction indiqué ci-dessous.

10X	12X	14X	16X	18X	20X	22X	24X	26X	28X	30X	32X
						✓					

ire
détails
es du
modifier
er une
filmage

The copy filmed here has been reproduced thanks to the generosity of:

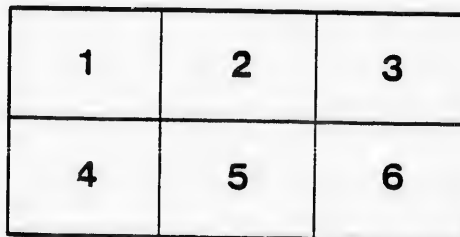
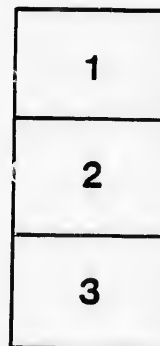
Législature du Québec
Québec

The images appearing here are the best quality possible considering the condition and legibility of the original copy and in keeping with the filming contract specifications.

Original copies in printed paper covers are filmed beginning with the front cover and ending on the last page with a printed or illustrated impression, or the back cover when appropriate. All other original copies are filmed beginning on the first page with a printed or illustrated impression, and ending on the last page with a printed or illustrated impression.

The last recorded frame on each microfiche shall contain the symbol \rightarrow (meaning "CONTINUED"), or the symbol ∇ (meaning "END"), whichever applies.

Maps, plates, charts, etc., may be filmed at different reduction ratios. Those too large to be entirely included in one exposure are filmed beginning in the upper left hand corner, left to right and top to bottom, as many frames as required. The following diagrams illustrate the method:



errata
to

pelure,
in à

32X

L'exemplaire filmé fut reproduit grâce à la générosité de:

Législature du Québec
Québec

Les images suivantes ont été reproduites avec le plus grand soin, compte tenu de la condition et de la netteté de l'exemplaire filmé, et en conformité avec les conditions du contrat de filmage.

Les exemplaires originaux dont la couverture en papier est imprimée sont filmés en commençant par le premier plat et en terminant soit par la dernière page qui comporte une empreinte d'impression ou d'illustration, soit par le second plat, selon le cas. Tous les autres exemplaires originaux sont filmés en commençant par la première page qui comporte une empreinte d'impression ou d'illustration et en terminant par la dernière page qui comporte une telle empreinte.

Un des symboles suivants apparaîtra sur la dernière image de chaque microfiche, selon le cas: le symbole \rightarrow signifie "A SUIVRE", le symbole ∇ signifie "FIN".

Les cartes, planches, tableaux, etc., peuvent être filmés à des taux de réduction différents. Lorsque le document est trop grand pour être reproduit en un seul cliché, il est filmé à partir de l'angle supérieur gauche, de gauche à droite, et de haut en bas, en prenant le nombre d'images nécessaire. Les diagrammes suivants illustrent la méthode.

4

STATEMENT
OF THE
AFFAIRS OF THE CORPORATION
OF
THE ECCLESIASTICS OF
THE SEMINARY OF ST. Sulpice,
MONTREAL.

PRINTED BY ORDER OF THE LEGISLATIVE ASSEMBLY.



QUEBEC:
PRINTED BY ROLLO CAMPBELL,
NO. 11, GARDEN STREET.
.....
1853.

STATEMENT

OF THE PROCEEDINGS

OF THE CONFERENCE

OF THE SECRETARY OF THE INTERIOR

AND

OF THE BUREAU OF LANDS



DEPARTMENT OF THE INTERIOR
BUREAU OF LANDS

THE

STATEMENT
OF THE
AFFAIRS OF THE CORPORATION
OF
THE ECCLESIASTICS OF
THE SEMINARY OF ST. SULPICE,
MONTREAL.

PRINTED BY ORDER OF THE LEGISLATIVE ASSEMBLY.



QUEBEC:
PRINTED BY ROLLO CAMPBELL,
NO. 11, GARDEN STREET.
.....
1853.

R E T U R N

To an Address from the Legislative Assembly, of the 20th September, 1852, for a full, clear and detailed Statement of the Estate, Property, Income, Debts and Expenditure, and of all the pecuniary and temporal affairs of the Corporation of "The Ecclesiastics of the Seminary of St. Sulpice of Montreal," from the date of its incorporation to the 1st day of January, 1852.

By Command.

A. N. MORIN,
Secretary.

SECRETARY'S OFFICE,
Quebec, 14th March, 1853.

SEMINARY OF MONTREAL, 11th March, 1853.

Sir,—In obedience to the commands of His Excellency the Governor General, I have the honor to transmit herewith, for the information of His Excellency and of the Legislature of this Province, detailed Statements of the property and revenues of the Seminary of St. Sulpice, of Montreal, in accordance with the Ordinance of the Special Council, passed in the 3rd year of Her Majesty's Reign, chaptered 30.

1. This property consists of the seigniorial dues of *lods et ventes* and *cens et rentes* from the three Seigniories of Montreal, St. Sulpice, and the Lake of the Two Mountains.

2. Of thirteen houses for which rents are paid in the City and Suburbs of Montreal, besides twelve School-houses producing no revenue, the Seminary Buildings, the College, the Country House at the Mountain, and the Mission House of the Lake of Two Mountains, used as a residence for the Members of the Corporation.

3. Of four farms in the Island of Montreal, namely: that of the Sault-an-Recollet, called the *Domaine*; that of the Mountain, or Country House; that of Woodland, or Gregory's Farm; and that of St. Gabriel; also, of twenty-one lands or farms in the Seigniorship of the Lake of Two Mountains, the greater part of which are newly settled.

4. Of two water-mills, one wind-mill and two saw-mills in the Seigniorship of the Lake of Two Mountains; two water-mills, one saw-mill, and one carding-mill in the Seigniorship of St. Sulpice; and an annual rent of four hundred minots of wheat remaining due on the sale of a mill at Sault-an-Recollet, in the Seigniorship of Montreal; the other mills of that Seigniorship and of the other Seigniorships being now sold.

5. Of certain constituted rents (*rentes constituées*) and interest accruing upon amounts derived from commutations, from the sale of mills and of cleared lands; the amounts derived from these different sources, comprising the ordinary revenue of the Seminary, the details of which will be found in the statements hereunto annexed.

6. Of the extraordinary revenues, consisting, 1st, of payments received of the amount of divers obligations; 2nd, the prices of lands and mills sold; 3rd, of arrears of *lods et ventes*, due prior to the 9th June, 1840, to be collected in conformity with the said Ordinance, and a detailed account of which will be found in Statement No. 5. hereunto annexed.

The or
have been
portion of
of the fun
in Statem

Number o

The Se
Twenty
and are c

Eleven
And th
the spirit
those of t

All the
the Corp
or in sick

The S
1st. F
2nd. T

3rd. T
4th. T
5th. T

6th. T
Montrea

7th. T
struction
the boys
school of
more th
twelve
schools,

8th. T

The p
seigniori
over to
the Lak
their de

The S
1st. A
and disb
2nd.

receipts
3rd.

4th.
Mounta

5th.

6th.

7th.

1840, a

8th.

Hon. A

The ordinary revenue not having proved adequate to the necessary works, the Seminary have been obliged, in order to the continuance of their building operations, to appropriate a portion of the funds arising from the sale of lots on the St. Gabriel farm, and also a portion of the funds arising from commutations and from loans of divers sums of money, as shewn in Statement No. 2.

Number of Members of the Seminary, Offices connected therewith, and the application of its Revenues.

The Seminary at present numbers forty-one Members, and two Assistants or Vicars.

Twenty-seven of these Members and the two Vicars reside at the *Grand Séminaire*, and are employed in the spiritual administration of the Parish of Montreal.

Eleven reside at the College or *Petit Séminaire*, and are engaged in the education of youth.

And three reside at the Mission of the Lake of the Two Mountains, and are engaged in the spiritual administration of that Mission, at which two Indian tribes are settled, namely, those of the Iroquois and Algonquin Indians.

All these Members live in common, receive no salaries or emoluments, being furnished by the Corporation with lodging, board, clothing, and all that they can require either in health or in sickness.

The Seminary, besides the support of its Members, provides moreover :—

- 1st. For the expenses indispensable to the procuring of the necessary new Members ;
- 2nd. The costs of management of their whole property ;
- 3rd. The repairing and construction of houses, mills and other buildings ;
- 4th. The spiritual care of the Parish of Montreal ;
- 5th. That of the Mission of the Lake of Two Mountains ;

6th. The necessary expenditure for the support of the College or *Petit Séminaire* of Montreal, the revenues of which are not sufficient to enable it to support itself alone ;

7th. The expenditure for the support of school-houses, in which the Seminary provide instruction for more than three thousand children of both sexes, there being twenty classes for the boys and eighteen classes for girls, the whole gratis ; in this number is included the school of the " Brothers of the Christian Schools," which establishment cost the Seminary more than seventeen thousand pounds, and the costs of support of which average annually twelve hundred pounds, besides four hundred pounds each year for the support of girls' schools, the buildings for which have cost more than four thousand pounds ;

8th. The expenditure necessary to the support of the poor, the orphans and the sick.

The property is administered by the *procureur* of the establishment, who receives the seigniorial dues, the rents of the Town houses and a part of the profits of the mills, and pays over to the *économé* of the Seminary, to the Director of the College and to the Director of the Lake Mission whatever they may require, to aid them in providing for the expenses of their department.

The Statement of the property and revenues of the Seigniori will accordingly comprise :—

- 1st. A Statement of the management of the *procureur* as regards the ordinary receipts and disbursements.
- 2nd. A Statement of the management of the said *procureur* as regards the extraordinary receipts and expenditure.
- 3rd. A Statement of the management of the *économé* of the Seminary.
- 4th. A Statement of the management of the *économé* of the Mission of the Lake of Two Mountains.
- 5th. A Statement of the arrears of *lots et ventes* prior to the 9th June, 1840.
- 6th. A Statement of the profits arising out of the sale of lots on the St. Gabriel Farm.
- 7th. A Statement of the funds derived from commutations made since the 9th June, 1840, and of the administration thereof.
- 8th. A Statement of debts due to and owing by the Seminary.
- 9th. Recapitulation of the above Statements.

P. BILLAUDELE, Superior.

Hon. A. N. MORIN, Provincial Secretary,
&c., &c., &c.

No. 1.

STATEMENT of the Management by the Procureur of the Seminary of St. Sulpice, of Montreal, from the 9th June, 1840, to the 1st October, 1852, (ordinary Receipts and Disbursements) of the three Seigniories of Montreal, St. Sulpice, and the Lake of the Two Mountains.

CURRENT RECEIPTS.

For the Years.	Seigniories of						In the Seigniories of Montreal and Saint Sulpice.						Total Receipts.					
	The Island of Montreal.		Saint Sulpice.		Lake of Two Mountains.*		Produce of Mills.		Constituted Rents and interest on commutations and other capital.		Rent of Houses.		£	s.	d.			
	Lods et ventes and cens et rentes.		Lods et ventes and cens et rentes.		Lods et ventes and cens et rentes.		£	s.	d.	£	s.	d.						
	£	s.	d.	£	s.	d.							£	s.	d.	£	s.	d.
1840 and 1841	682	12	6	348	6	6	368	0	0	352	19	5	796	16	6½	2548	14	11½
1842	1275	10	8	841	14	11	892	4	8	558	9	8	1152	6	11	4700	6	10
1843	1481	0	6½	607	2	4	1097	7	0	222	19	2	1742	4	3	5150	13	3½
1844	1744	9	1	823	10	11	1726	12	0	472	15	10	1778	11	8	6545	19	6
1845	2548	8	6	944	2	9	1442	18	5	449	11	10	3193	12	10	8378	14	4
1846	2375	17	4½	1089	17	4	1533	17	9	319	14	2	4010	19	4	9330	5	11½
1847	2164	15	3½	989	18	4	1446	1	11½	616	4	10½	4948	7	2½	10165	7	8
1848	1758	5	6	924	12	2½	1049	3	4	628	15	8	4871	2	8	10011	0	94
1849	1786	8	10½	795	9	0½	637	17	8	630	8	3	5196	5	4	10161	9	34
1850	1979	13	1	865	9	1½	714	18	6	767	3	4	5117	0	2½	10053	2	5
1851	1859	4	7½	827	11	0	871	12	2½	646	5	3	2211	17	4	10108	19	11
1852	1814	4	11½	778	17	2	680	14	11	522	19	0	4385	7	6	8870	0	6
	£ 21670	14	0	9836	11	7½	12461	8	5	6188	6	5½	42384	11	9½	95424	15	5½

* The Lake of Two Mountains' Wheat is carried to the Receipt of the Econome of the Lake Mission.

† The Rents from 1840 to 1847 are carried to the Receipt of the Econome of the Seminary.

No. 2.

STATEMENT of the Management of the Procureur of the Seminary of St. Sulpice, of Montreal, shewing the extraordinary Receipts and Expenditure, from the 9th June, 1840, to the 1st October, 1852.

Years.	RECEIPTS.		Amount.		Total.		Years.	EXPENDITURE.		Amount.		Total.	
	£	s. d.	£	s. d.	£	s. d.		£	s. d.	£	s. d.	£	s. d.
1840 and 1841.	In hands on the 20th October, 1839, and for arrears of lods et ventes collected before the 9th June, 1840	5300	0	1	6	0	1840 and 1841.	For building Mills	321	16	4		
	Amount of drivers Bonds.....	1120	18	6	0			Repairs to the Mill of Belle Riviere ..	288	9	0		
	Sale of Lands	559	5	0	0			Travelling expenses of Priests from France, and others	424	3	2		
	Sale of Mills	1133	8	5	6			Lent to Montreal Fabrique	1603	11	3		
	Sum borrowed from the Hôtel-Dieu.....	4145	8	6	6			By transfer to Wm. Bradbury	600	0	0		
	Arrears of lods et ventes collected in the country parts of the Island of Montreal	1923	0	51	0			Moneys reimbursed	700	0	0		
	In the Town and Suburbs of do	5228	7	81	0			Purchase of Land for Christian Brothers' School	4061	13	5		
	In the Seigniorv of St. Sulpice	222	8	4	0			Paid on account of building the same.	4657	2	11 1/2		
	In that of the Lake of Two Mountains.	245	5	0	0	19378 11 0	1842.	For building Mills	439	1	3		
1842.	Bonds and Notes	5274	11	9	0			Repairs to Mill at La Plie	307	7	1		
	Sale of Lands	621	3	2	0			Travelling expenses of Priests	237	16	8		
	Sale of Mills	146	13	4	0			Building the wall on the Farm at the Mountain	1906	3	6		
	Redemption of a Ground Rent	1000	0	0	0			Purchase of Timber	1251	3	8		
	Arrears of lods et ventes collected in the country parts of the Island of Montreal	1290	13	4	0			Repaid to Fabrique of Ste. Genevieve and other creditors	2251	11	3		
	In the Town and Suburbs of do	5397	1	8	0			By transfer to Messrs. P. Paraulgh, Wm. and George Tate, and the Co.	1013	0	5		
	In the Seigniorv of St. Sulpice	709	0	11	0			Loan to Corporation of Montreal	650	0	0		
	In that of the Lake of Two Mountains.	637	6	7	0	15676 10 9		Balance on building of the Christian Brothers	930	11	3		
													8986 15 1

1843.	Bonds and Notes	153	9	2			1843.	Building and repairing Mills	306	7	6		
	Sale of Lands	285	10	0	0			Improvements to Farms at the Lake ..	172	7	10		
	Sale of Mills	52	0	8	0			Travelling expenses of Priests	742	16	7		
								Purchasing Timber	370	4	7		

15076-10 9 10991-10 0

Year	Description	1843	1844	1845	Total
1843	Bonds and Notes	153	9	2	164
	Sale of Lands	285	10	0	295
	Sale of Mills	52	0	8	60
	Arrears of lots et ventes collected in the country parts of the Island of Montreal	2080	0	8	2088
	In the Town and Suburbs of do	4295	10	5	4310
	In the Seigneurie of St. Sulpice	214	18	4	236
	In that of the Lake of Two Mountains	328	4	7	339
1844	Sale of Lands	579	10	1	590
	Sale of Mills	729	3	4	736
	Bonds and Notes	145	0	0	145
	Redemption of a rente constitute	500	0	0	500
	Arrears of lots et ventes collected in the country parts of the Island of Montreal	1950	3	1	1954
	In the Town and Suburbs of do	3651	10	2	3663
	In the Seigneurie of St. Sulpice	227	3	4	234
	In that of the Lake of Two Mountains	454	7	7	468
1845	Sale of Lands	268	15	0	283
	Sale of Mills	300	0	0	300
	Principal sums repaid	528	16	8	552
	Indemnities in mortmain	448	14	1	463
	Arrears of lots et ventes collected, viz.:-				
	In the country parts, Island of Montreal	1340	11	3	1354
	In the Town and Suburbs of do	2920	2	10	2932
	In the Seigneurie of St. Sulpice	121	19	9	149
	In that of the Lake of Two Mountains	393	3	1	397
1843	Building and repairing Mills	306	7	6	319
	Improvements to Farms at the Lake	172	7	10	189
	Traveling expenses of Priests	742	16	7	765
	Purchasing Timber	376	4	7	387
	Re-paid to Hotel-Dieu and others	2343	17	3	2363
	Transfer to the Fabrique	500	0	0	500
	City Debentures and money lent	1165	2	1	1168
	Gift of a Pell to the Parish Church	554	12	11	577
	On account of a building in St. F. Xavier St.	582	17	1	600
1844	For building and repairs of Mills and improvements about the Lake	216	8	8	232
	Farms	60	0	0	60
	Expenses and journeys of the Priests	96	7	8	111
	Purchase of building Timber	362	4	8	374
	Repayment for the Improvements at St. Anne's Plain	1231	8	6	1245
	Building in St. Francis Xavier Street	945	3	0	948
	Re-paid the Bishop of Montreal, the Fabrique of St. Denis and others	408	0	0	408
	Repaid the Fabrique of Montreal by transfer	866	7	4	877
	City Bonds bought	100	0	0	100
	Transfer on the Fabrique of St. Benoit	331	7	7	345
1845	Building and repairs of Mills	956	5	3	964
	Expenses and journeys of the Priests for three years	1692	13	1	1706
	Purchase of building Timber for the Seminary, the Schools, and St. Patrick's Church	1869	3	0	1872
	Purchase of City Bonds, St. Paul's and St. Anne's Markets	838	16	1	855
	Repaid Sisters of the Congregation, &c	1780	9	1	1790
	Paid on account of the house of Christian Brothers	2523	1	11	2535
	Building of three new Schools	10891	10	0	10901

No. 2.—(Continued.)

Years.	RECEIPTS.	Amount.			Total.	Years.	EXPENDITURE.	Amount.			Total.				
		£	s.	d.				£	s.	d.					
1846..	Sale of Lands	162	7	0	1846..	Purchase of building Timber	1061	15	11	1846..	Purchase of building Timber	1061	15	11	
	Principal sums repaid	150	7	0		Repairs of Mills	901	18	4		Repairs of Mills	901	18	4	
	Timber sold to the Fabrique	1068	2	0		Building of the Lake Mills	668	2	6		Building of the Lake Mills	668	2	6	
	<i>Arrears of lots et ventes collected,</i>					Expenses and journeys of the Priests	669	14	6		Expenses and journeys of the Priests	669	14	6	
	<i>viz. :—</i>					and others	1500	0	0		and others	1500	0	0	
	In the country parts of the Island of					Loan to the Fabrique of Montreal	2376	1	10		Loan to the Fabrique of Montreal	2376	1	10	
Montreal	1374	16	9	Balance for the house of the Christian	843	2	1	Balance for the house of the Christian	843	2	1				
In the Town and Suburbs of do	1674	14	3	Brothers	75	0	0	Brothers	75	0	0				
In the Seigneurie of St. Sulpice	301	3	1 $\frac{1}{2}$	Building of St. Luke's Chapel and	82	17	1	Building of St. Luke's Chapel and	82	17	1				
In that of the Lake of Two Mountains.	374	9	7	School	316	0	0	School	316	0	0				
				Repaid to the Estate of Mr. Thavenet.	25	18	11	Repaid to the Estate of Mr. Thavenet.	25	18	11				
				Expenses attending Commutation	5105	19	8 $\frac{1}{2}$	Expenses attending Commutation	5105	19	8 $\frac{1}{2}$				
				In that of the Lake of Two Mountains.				In that of the Lake of Two Mountains.							
1847..	Sale of Lands	186	5	0	1847..	Interest to the Gregory Estate and	159	19	8 $\frac{1}{2}$	1847..	Water Works Debenture	159	19	8 $\frac{1}{2}$	
	Redemption of a Ground Rent	50	0	0		Indemnity paid on the Lake Domain..	500	0	0		Indemnity paid on the Lake Domain..	500	0	0	
	Various Obligations and Notes	152	10	0		Expenses and journeys of the Priests.	921	5	3		Expenses and journeys of the Priests.	921	5	3	
	<i>Arrears of lots et ventes collected,</i>					Loan to the Fabrique of Montreal	1644	0	2 $\frac{1}{2}$		Loan to the Fabrique of Montreal	1644	0	2 $\frac{1}{2}$	
	<i>viz. :—</i>					Repairs of the Mill at Lachigan	831	3	8		Repairs of the Mill at Lachigan	831	3	8	
	In the country parts of the Island of					Balance of the cost of the Mill, St. Be-	78	1	2 $\frac{1}{2}$		Balance of the cost of the Mill, St. Be-	78	1	2 $\frac{1}{2}$	
Montreal	1378	2	10 $\frac{1}{2}$	not	350	19	0	not	350	19	0				
In the Town and Suburbs of do	1721	1	11 $\frac{1}{2}$	Account of fencing in Sherbrooke	305	0	0	Account of fencing in Sherbrooke	305	0	0				
In the Seigneurie of St. Sulpice	187	8	9 $\frac{1}{2}$	Street	300	0	0	Street	300	0	0				
In that of the Lake of Two Mountains.	364	8	9 $\frac{1}{2}$	Building of a School House in St.	281	2	4	Building of a School House in St.	281	2	4				
				Anne's Suburbs	145	1	0	Anne's Suburbs	145	1	0				
				Interest on the purchase money of				Interest on the purchase money of							
				Woodland Farm				Woodland Farm							
				By transfer on Messrs. Lachapelle and				By transfer on Messrs. Lachapelle and							
				Rodier				Rodier							
					4039	17	5		4039	17	5				
1848..	Sale of Lands	25	0	0	1848..	Repairs of Mills	281	2	4	1848..	Repairs of Mills	281	2	4	
	Redemption of a Ground Rent	55	0	0		Improvements in the Lake Domain ..	145	1	0		Improvements in the Lake Domain ..	145	1	0	

Transfer and Obligations..... 129 3 4

Expenses of opening Sherbrooke Street. 264 0 0

Expenses and journeys of the priests... 982 1 3 $\frac{1}{2}$

Interest on the purchase money of...

1848..	4089	17	5	300	0	0	5090	9	13
Sale of Lands	25	0	0						
Redemption of a Ground Rent	55	0	0						
Transfer on messrs. Lacombe and Rodier				281	2	4			
Repairs of Mills				145	1	0			
Improvements in the Lake Domain									

1849..	2290	18	6	1446	0	6	6981	13	10
Transfer and Obligations	129	3	4						
Arrears of <i>lois et rentes</i> collected, <i>viz.</i> :—									
In the country parts of the Island of Montreal	764	2	4						
In the Town and Suburbs of do	977	1	4						
In the Seigneurie of St. Sulpice	110	3	9						
In that of the Lake of Two Mountains	230	7	9						
Redemption of a rente	1	5	0						
Transfer and Obligations	309	16	4						
Repurchase of the Mill on Lake Ouareau	3000	0	0						
Interest on the above sum	639	0	0						
Amount taken from the Commutations for the Seminary Building	2600	0	0						
Arrears of <i>lois et rentes</i> collected, <i>viz.</i> :—									
In the country parts of the Island of Montreal	707	16	10						
In the Town and Suburbs of do	907	9	1						
In the Seigneurie of St. Sulpice	79	2	6						
In that of the Lake of Two Mountains	203	4	8						
Loan from the Hotel-Dieu and others. From Commutation Fund for the Seminary Buildings	1433	6	8						
Arrears of <i>lois et rentes</i> collected, <i>viz.</i> :—									
In the country parts, Island of Montreal	581	11	7						
In the Town and Suburbs of do	785	8	4						
In the Seigneurie of St. Sulpice	189	5	9						
In that of the Lake of Two Mountains	321	3	5						
Expenses of opening Sherbrooke Street, Expenses and journeys of the priests, Interest on the purchase money of Woodland Farm	264	0	0						
Rebuilding the School House in St. Joseph Suburbs	380	8	3						
On account of the Seminary Buildings and purchase of Building Materials	4624	0	11						
Expenses and journeys of the Priests. Repurchase of the Mills on Lake Ouareau	1446	0	6						
Interest on the purchase-money of Woodland Farm	3659	0	0						
Repairs of Mills	305	0	0						
On account of the Seminary Buildings	141	7	9						
Loan to the Fabrique of Montreal	2614	12	5						
Expenses and journeys of the Priests, &c	682	7	4						
Repairs of Mills	487	7	8						
Interest on the purchase money of Woodland Farm	305	0	0						
Improvements on the Lake Farms	537	8	6						
Seminary Buildings	2649	5	3						
Building of Church at Côte St. Antoine	1502	0	8						
1850..	5447	14	6	11946	0	8	6164	9	5
Transfer and Obligations	129	3	4						
Arrears of <i>lois et rentes</i> collected, <i>viz.</i> :—									
In the country parts of the Island of Montreal	707	16	10						
In the Town and Suburbs of do	907	9	1						
In the Seigneurie of St. Sulpice	79	2	6						
In that of the Lake of Two Mountains	203	4	8						
Loan from the Hotel-Dieu and others. From Commutation Fund for the Seminary Buildings	1433	6	8						
Arrears of <i>lois et rentes</i> collected, <i>viz.</i> :—									
In the country parts, Island of Montreal	581	11	7						
In the Town and Suburbs of do	785	8	4						
In the Seigneurie of St. Sulpice	189	5	9						
In that of the Lake of Two Mountains	321	3	5						

No. 2.—(Continued.)

Years.	R E C E I P T S .		A m o u n t .		Total.	Years.	E X P E N D I T U R E .		A m o u n t .		Total.			
	£	s. d.	£	s. d.			£	s. d.	£	s. d.	£	s. d.		
1851..	Transfer and Obligations, and quint ..	62	5	6		1851..	Expenses and journeys of the Priests...	1140	1	2				
	Sale of Lands	50	0	0			Repairs of Mills	257	9	1				
	Loan from the Masson Estate.....	5250	0	0			Indemnity to the censitaires of Belle Rivière	18	4	7				
	From Commutation Fund for the Seminary Buildings.....	1000	0	0			Transfer on M.E. Raizenne and expenses on the purchase money of Woodland Farm	30	0	0				
	Arrears from the country parts of the Island of Montreal	555	13	11			Mr. Gerrard for transfer on the Fabrique Seminary Buildings	289	10	9				
	do from the Suburbs and Town of do	545	6	0			Building of Churches in Saint Anne's Suburbs and on Côte St. Antoine.	1250	0	0				
	do from the Seignior of St. Sulpice.	66	17	10			Improvements on the Lake Farms.....	1125	12	3½				
	do from that of the Lake of Two Mountains.....	343	4	8			Expenses and journeys of the Priests; Indemnity to the censitaires of Belle Rivière	4802	19	6½				
1852..	Transfer and Obligations.....	70	3	4	7873	1852..	Repairs of Mills	589	15	10	9563	4	3	
	Sale of Lands	323	4	7			Interest on the purchase money of Woodland Farm	412	15	8				
	Indemnity	300	0	0			Improvements on the Lake Farms.....	50	0	0				
	Redemption of rentes constitucées, &c.	1038	17	9			Rebuilding of a house in St. Paul's St.	248	5	10				
	Account of Mills sold	300	0	0			Metual Insurance for Premium Notes.	265	0	0				
	Insurance for losses by fire	846	0	0			Hotel-Dieu for transfer on the Fabrique on account of building of Churches in St. Anne's Suburbs and Côte St. Antoine	569	17	0				
	Loans from Savings' Bank and others.	2850	0	0			Repaid to the Masson Estate	1553	6	7				
	Payment received from the Commissioners of Public Works for Land at Point Ste. Anne	6250	0	9			Loan to the Rawdon Railway	2549	11	0				
	From Commutations	3000	0	0			Do. to the Nuns of Hôtel-Dieu.....	833	6	8				
	Account of Lands at St. Gabriel	5500	0	0			Repaid a loan to do	8507	16	10½				
	Arrears of lots et ventes collected from the three Seigniories collectively ..	2159	3	11	22637	9	7	Expenses and journeys of the Priests; Indemnity to the censitaires of Belle Rivière	4000	0	0			
								Repairs of Mills	1000	0	0			
								Interest on the purchase money of Woodland Farm	1000	0	0			
								Improvements on the Lake Farms.....	600	0	0			
								Expenses and journeys of the Priests; Indemnity to the censitaires of Belle Rivière				21327	19	7½
								Expenditure.....				113400	11	1
								Receipts				113719	13	11
								Excess of Receipts over Expenditure...				319	2	10

No. 3.

STATEMENT of the Management of the Economy of the Seminary of St. Sulpice, of Montreal, from the 9th June, 1840, to 1st Oct., 1852.

Expenditure.....	£ 113400 11	1
Receipts.....	113719 13	11
Excess of Receipts over Expenditure.....	£ 319	2 10

No. 3.
STATEMENT of the Management of the Economy of the Seminary of St. Sulpice, of Montreal, from the 9th June, 1840, to 1st Oct., 1852.

Years.	R E C E I P T S .		Total.		Years.	E X P E N D I T U R E .		Amount.		Total.	
	£	s. d.	£	s. d.		£	s. d.	£	s. d.	£	s. d.
1840 and 1841.	Cash from the procurer of the Seminary for house expenses.....	3640 17 4½			1840 and 1841.	Current House Expenses, Clothing, &c.	4699 6 1½				
	Rents of Houses.....	426 13 4				Farm Expenses.....	378 18 7				
	From Farms.....	549 0 6½				Extra House Expenses.....	614 13 9½				
	From Mills.....	628 18 0				Repairs.....	207 16 4½				
	Petty sums.....	624 12 6								5900	14 10½
1842.	Cash from the procurer for House Expenses.....	2622 1 1½			1842.	Current House Expenses.....	2041 10 10				
	Rents of Houses.....	481 6 8				Clothing.....	789 5 10				
	From Farms.....	1255 15 9				Extra House Expenses.....	1603 6 8				
1843.	Cash from the procurer for House Expenses.....	1918 10 0			1843.	Current House Expenses.....	1860 10 10				
	Rents of Houses.....	773 10 10				Clothing.....	708 9 7				
	From Farms.....	724 3 9				Extra House Expenses.....	611 10 6½				
1844.	Cash from the procurer for House Expenses.....	1446 7 7½			1844.	Current House Expenses.....	1850 15 1				
	Rents of Houses.....	847 0 10				Clothing.....	781 16 4½				
	From Farms.....	913 16 3				Extra House Expenses.....	603 1 2½				
1845.	Cash from the procurer for expenses, &c.....	1791 8 0			*1845.	Current House Expenses.....	2042 18 4				
	Rents of Houses.....	1260 13 4				Clothing.....	742 5 10				
	From Farms.....	871 15 8				Extra House Expenses.....	1121 11 8				
1846.	Cash from the procurer for expenses, &c.....	1793 16 8			*1846.	Current House Expenses.....	1903 3 10				
	Rents of Houses.....	1493 12 6				Clothing.....	803 15 0				
	From Farms.....	669 17 9½				Extra House Expenses.....	891 4 3½				
										3180	70 11½
										3235	12 8
										3906	15 10
										3598	3 1½

* For the other Rents, see Statement No. 1.

No. 3.—(Continued.)

Years.	RECEIPTS.	Amount.			Total.			Years.	EXPENDITURE.			Amount.			Total.			
		£	s.	d.	£	s.	d.		£	s.	d.	£	s.	d.	£	s.	d.	
1847..	Cash from the procureur for House Expenses	123	7	7½				1847..	Current House Expenses	1028	18	4						
	Rents of Houses	1477	15	6					Clothing	792	2	9						
	From Farms	801	11	11½					Extra House Expenses	1005	4	0½						
					3522	15	1								3726	5	1½	
1848..	Cash from the procureur for House Expenses, &c	2609	18	9				1848..	Current House Expenses	2511	10	0½						
	*Arrears of rents of Houses	83	15	4½					Clothing	375	11	11						
	From Farms	805	11	8½					Extra House Expenses	770	11	7½						
					3499	5	10								3657	13	7	
1849..	Cash from the procureur for House Expenses, &c	2760	0	0				1849..	Current House Expenses	2656	15	5½						
	From Farms	644	15	8½					Clothing	325	0	0½						
					3404	15	8½			Extra House Expenses	404	17	5½					
1850..	Cash from the procureur for House Expenses	3975	18	8				1850..	Current House Expenses	2806	12	6						
	From Farms	779	2	8					Clothing	730	6	9						
					4755	1	4			Extra House Expenses	1289	16	4					
1851..	Cash from the procureur for House Expenses, &c	3274	6	7				1851..	Current House Expenses	2452	10	5						
	From Farms	706	15	8					Clothing	494	3	6						
					3981	2	3			Extra House Expenses	816	7	4					
1852..	Cash from the procureur for House Expenses, &c	3776	4	8				1852..	Current House Expenses	3224	7	0						
	From Farms	993	3	6					Clothing	466	6	3						
					4769	8	2			Extra House Expenses	1046	6	0					
	Excess of Receipts over Expenditure..																	
					£	4868	1	11										
						4836	8	6½										
						323	13	4½										
						£									£	4836	8	6½

* For the other Rents, see Statement No. 1.

No. 4.—(Continued.)

Years.	RECEIPTS.	Amount.			Total.			Years.	EXPENDITURE.	Amount.			Total.		
		£	s.	d.	£	s.	d.			£	s.	d.	£	s.	d.
1845..	From Mills	368	15	3½	1363	10	10½	1845..	Service and repairs of Mills	118	9	4	1285	8	2½
	From Farms and Domain	415	7	2				1846..	Expenses of the Mission and Alms	523	14	0			
	From the procurer and économe of the Seminary	579	8	5				1846..	do and improvements of Farms, do of Divine Worship and of Schools	503	17	2			
1846..	From Mills	416	15	9½	1417	15	5	1846..	Service and repairs of Mills	43	19	6	1485	12	11
	From Farms and Domain	518	19	3				1847..	Expenses of the Mission and Alms	693	11	7½			
	From the procurer and économe of the Seminary	482	10	4½				1847..	do and improvements of Farms, do of Divine Worship and of Schools	609	1	9½			
1847..	From Mills	733	0	10	937	0	11½	1847..	Service and repairs of Mills	338	6	4	1887	7	1
	From Farms and Domain	541	13	8½				1848..	Expenses of the Mission and Alms	854	8	1½			
	From procurer and économe of the Seminary for improvements and expenses	662	6	5				1848..	do and improvements of Farms, do of Divine Worship and of Schools	595	3	5½			
1848..	From Mills	709	4	10½	2069	10	11½	1848..	Service and repairs of Mills	500	2	4½	2182	12	11½
	From Farms and Domain	590	17	7				1849..	Expenses of Mission and Alms	730	8	6½			
	From the procurer and the économe.	769	8	6				1849..	do of Divine Worship and of Schools	82½	15	4½			
1849..	From Mills	501	4	1½	2545	10	3½	1849..	Service and repairs of Mills	97	6	8	2545	12	9
	From Farms and Domain	861	17	4				1849..	Expenses of Mission and Alms	251	17	0½			
	From the procurer and the économe.	1182	9	0				1849..	do and improvements of Farms, do of Divine Worship and of Schools	877	7	5½			
1850..	From Mills	370	17	6	370	17	6	1850..	Expenses and repairs of Mills, do of Mission and Alms	234	17	1	476	8	8½
	From Farms and Domain	502	11	7½				1850..	do	476	8	8½			

From the procurer and the économe.	1182	9	0	2545	10	3½	1286	7	5	2545	12	9
do and improvements of Farms.												
do of Divine Worship and of Schools							130	0	10			

1850..	From Mills	370	17	6						234	17	1						
	From Farms and Domain	593	11	7½						476	8	8½						
	From the procurer and the économe.	1226	14	10						1258	14	11½						
					2191	3	11½			219	8	10			2189	9	7	
1851..	From Mills	450	7	9½						209	19	8						
	From Farms and Domain	580	15	8½						669	11	7½						
	From the procurer and the économe.	1268	1	1½						1129	4	5½						
					2308	4	7½			303	3	8			2311	19	5	
1852..	From Mills	266	13	11						393	3	11½						
	From Farms and Domain	593	19	4						637	10	11						
	From the procurer and the économe.	1133	4	6						804	1	3						
					2093	17	9			238	6	2½			2093	2	4	
					£	1992	19	4							£	1997	4	0
						1997	4	0								0		
	Excess of Receipts over Expenditure...				£	1813	4											

1850.. Expenses and repairs of Mills, do of Mission and Alms do and improvements of Farms. do of Divine Worship and of Schools

1851.. Expenses and repairs of Mills, do of Mission and Alms do and improvements of Farms. do of Divine Worship and of Schools

1852.. Expenses and repairs of Mills, do of Mission and Alms do and improvement of Farms. do of Divine Worship and of Schools

No. 5.

STATEMENT of ARREARS of lods et ventes which were due previously to the passing of the Ordinance 3 Vic. cap. 30, and which were received from 9th June, 1840, to 1st October, 1852. Pursuant to that Ordinance, the Seminary may receive of these Arrears to their own profit and behoof, in the Island of Montreal, a sum not exceeding £44,000, and in the Seigniories of St. Sulpice and of the Lake of Two Mountains, the sum of £12,700.

In the Island of Montreal the Seminary have received on account of the sum of £44,000.

IN THE YEARS.	Arrears.			Expenses of Management.		
	£	s.	d.	£	s.	d.
1840 and 1841	7151	8	2	715	2	10
1842	7287	15	0	728	15	6
1843	6375	11	11	637	11	1
1844	5601	13	3	560	3	3
1845	3960	14	0	396	0	1
1846	3049	11	0	304	19	1
1847	3099	4	10	309	18	5
1848	1741	8	8½	174	2	3
1849	1615	6	0	161	10	7
1850	1316	19	11½	131	13	10
1851	1100	19	11	110	1	11
1852	1843	15	11	184	7	7
	£ 44144	3	8	4414	6	5
Amount received in the Island of Montreal to 1st October, 1852—Net produce			£	39729	17	3
Amount remaining to be received				4270	2	9

And in St. Sulpice and the Lake on account of the sum of £12,700.

1840 and 1841	£ 467	s. 13	d. 4	£ 46	s. 15	d. 4
1842	1346	7	6	134	12	9
1843	543	2	11	54	6	3
1844	681	10	11	68	3	2
1845	515	2	10	51	10	3
1846	675	12	8½	67	11	3
1847	551	17	7	55	3	9
1848	340	11	6	34	1	3
1849	282	7	2½	28	4	8
1850	510	9	2½	51	0	11
1851	410	2	6	41	0	3
1852	315	8	0	31	10	9
	£ 6640	6	2½	664	0	7
Amount received in St. Sulpice and the Lake to 1st October, 1852—Net			£	5976	5	7½
Amount remaining to be received in St. Sulpice and the Lake				6723	14	4½
Amount remaining to be received in the Island of Montreal				4270	2	9
Total remaining to be received			£	10993	17	1½

Years.
1846... Oct
1847...
1848...
1849...
1850...
1851...
1852...
Money app
Do
Do
Invested in
Discount
Fences, R
Sheriff's c
Lots on N
Purchase o
Paid on ac
at C
Balance in
Do
St
R
To the 1
d
d
d
c
c
c

No. 6.

STATEMENT of the Account derived from the Sale of St. Gabriel's Farm.

Years.	Date.	On account of price of sale.			On account of price of sale.			Interest.			Total.					
		£	s.	d.	£	s.	d.	£	s.	d.	£	s.	d.	£	s.	d.
1846..	October 1st..	7249	10	0	564	16	6	90	12	5	7904	18	11			
1847..	do do							204	16	9	204	16	9			
1848..	do do							171	5	9	171	5	9			
1849..	do do							220	9	7	220	9	7			
1850..	do do	192	12	0				74	15	7	267	7	7			
1851..	do do	1406	17	10				37	12	3	1444	10	1			
1852..	do do	10545	10	6				32	15	1	10578	5	9			
														20791	14	5
											£	s.	d.	£	s.	d.
Money applied to the purchase of Lands for Schools and Churches.											2344	13	0			
Do. for building Bridges and Basin.....											1051	0	0			
Do. for costs of Survey, Sale and Plans.....											810	15	1			
Invested in the Chambly Road.....											500	0	0			
Discount for Cash.....											90	0	0			
Fences, Roads and small buildings.....											237	9	10			
Sheriff's cost and Commission.....											206	14	4			
Lots on Notes re-imbursed.....											1285	16	6			
Purchase of Debentures of the St. Lawrence and Champlain Railroad											6400	0	0			
Paid on account of building Churches in St. Antoine Suburbs and at Côte St. Antoine.....											5500	0	0			
Balance in hand on the 1st October, 1852, in Notes..											£847	9	0			
Do. do. do. do. in money..											1517	16	8			
											2365	5	8	20791	14	5

No. 7.

STATEMENT of Commutations, from the 9th June, 1840, to 1st October, 1852.

RECEIPTS.	Amount.			INVESTMENTS.	Amount.		
	£	s.	d.		£	s.	d.
To the 1st of October, 1841..	11908	10	11	Payable at fixed terms.....	14237	9	10
do do 1842..	11330	5	3	Constituted Rent.....	6732	14	10
do do 1843..	9374	9	10	In Public Funds.....	15481	4	2
do do 1844..	7869	17	3	In property affording a Re-			
do do 1845..	17601	12	9	venue.....	27283	16	11
do do 1846..	8746	6	2	In property affording no Re-			
do do 1847..	4945	4	9½	venue.....	684	13	3
do do 1848..	3729	2	2	In the new building of the Se-			
do do 1849..	1704	10	8	minary.....	5600	0	0

No. 7.—(Continued.)

RECEIPTS.	Amount.			INVESTMENTS.	Amount.		
	£	s.	d.		£	s.	d.
To the 1st of October, 1850 . . .	1524	19	7	Loan to the City of Montreal . .	4000	0	0
do do 1851 . . .	1992	7	5	On the Churches at St. Antoine and St. Anne's Suburbs	3000	0	0
do do 1852 . . .	2937	7	11	Balance in hands	487	13	8½
	£ 83664	12	8½		£ 83664	12	8½

No. 8.

ASSETS.

Due by the Fabrique of Montreal	£ 45337	s. 1	d. 1
Do do of St. Benoit	100	0	0
Lands sold	1394	0	10
By divers Obligations	1079	13	4
For Mills sold	2378	8	6
By the City of Montreal, divers Bonds, £3248, indemnity £1800	5048	0	0
By divers Bonds on the Ste. Anne's Market	1528	2	6
Do do on the Water Works	1100	0	0
For quit on the Fief Closse £450 left at interest	1250	0	0
Do on the Fief Lagauchetière £800 left at interest			
By the Rawdon Railroad	1000	0	0
By the Ladies of the Hôtel-Dieu	1000	0	0
Balance of the price of Mills on Lake Ouareau	2700	0	0
	£ 63825	s. 6	d. 3

LIABILITIES.

Due to the Hôtel-Dieu of Montreal	£ 15140	s. 0	d. 0
To Séraphin Leblanc	833	6	8
To the Estate of the Honorable J. Masson	1250	0	0
To Thomas Coreoran and the Savings Bank	2850	0	0
	£ 20073	s. 6	d. 8

RECAPITULATION.

The Assets amount to	£ 63825	s. 6	d. 3
The Liabilities to	20073	6	8
Excess of Assets over Liabilities	£ 43751	s. 19	d. 7

The ordin
tw
18
Besides,
to

All th
nary Re
dinary I
Expense
October

The bal
d
d
d
Balance
e
Balance
N

We,
and cor
treal, s

Mon

No. 9.

RECAPITULATION.

Amount.

£	s.	d.
000	0	0
000	0	0
187	13	8½
564	12	8½

	£	s.	d.
The ordinary revenues of the Seminary of St. Sulpice of Montreal, during the last twelve years, that is to say from the 9th June, 1840, to the 1st October, 1852, according to Statement No. 1, have amounted to.....	96424	15	5½
Besides, in Wheat, Profits derived from Mills, Farms, and from Rents, according to the Statements Nos. 3 and 4.....	32530	11	11½
Total.....	£128955	7	4½
Nett average Annual Revenue.....	£10746	5	7½

All the sums of money collected during the last twelve years over and above the ordinary Receipts, and which are detailed in Statement No. 2, under the head of the Extraordinary Receipts, have been applied with the Ordinary Revenues, to the payment of all the Expenses, both Ordinary and Extraordinary, from the 9th of June, 1840, to the 1st of October, 1852; and the sums following only are in hand, that is to say:—

£	s.	d.
337	1	1
100	0	0
304	0	10
379	13	4
378	8	6
348	0	0
328	2	6
100	0	0
250	0	0
900	0	0
900	0	0
900	0	0
325	6	3

	£	s.	d.
The balance of Receipts according to Statement No. 1.....	252	5	5½
do do do do No. 3.....	323	13	4½
do do do do No. 4.....	18	13	4
do do do do No. 2.....	319	2	10
Balance remaining from Sale of Lots of St. Gabriel Farm, according to Statement No. 6. {In Notes. £847 9 0 } {In Money. 1517 16 8 }	2365	5	8
Balance remaining from sums received from Commutation, according to Statement No. 7.....	487	13	8½
Total in hand.....	£3766	14	4½

(Signed,) P. BILLAUDELE, *Supr.*
JPH. COMTE, *Ptre.*,
Proc. of Seminary, Montreal.

We, the undersigned Notaries, do certify that the above Statements have been faithfully and correctly extracted from the Books of Account of the Seminary of St. Sulpice, of Montreal, shewn to us for that purpose.

P. LACOMBE, N. P.
A. JOBIN.

Montreal, 11th March, 1853.

£	s.	d.
25	6	3
73	6	8
51	19	7

PRINTED BY ROLLO CAMPBELL, GARDEN STREET, QUEBEC.

