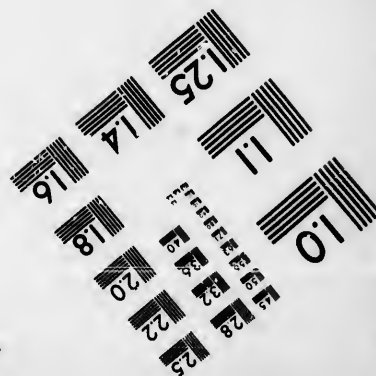
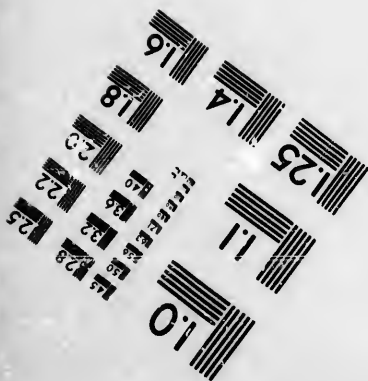
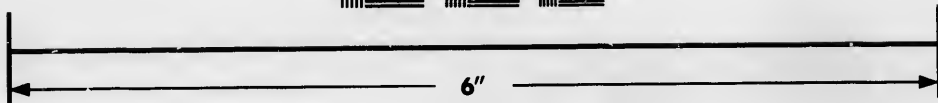
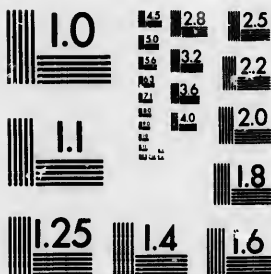


**IMAGE EVALUATION  
TEST TARGET (MT-3)**



**Photographic  
Sciences  
Corporation**

23 WEST MAIN STREET  
WEBSTER, N.Y. 14580  
(716) 872-4503



**CIHM/ICMH  
Microfiche  
Series.**

**CIHM/ICMH  
Collection de  
microfiches.**



Canadian Institute for Historical Microreproductions / Institut canadien de microreproductions historiques



**© 1986**

Technical and Bibliographic Notes/Notes techniques et bibliographiques

The Institute has attempted to obtain the best original copy available for filming. Features of this copy which may be bibliographically unique, which may alter any of the images in the reproduction, or which may significantly change the usual method of filming, are checked below.

L'Institut a microfilmé le meilleur exemplaire qu'il lui a été possible de se procurer. Les détails de cet exemplaire qui sont peut-être uniques du point de vue bibliographique, qui peuvent modifier une image reproduite, ou qui peuvent exiger une modification dans la méthode normale de filmage sont indiqués ci-dessous.

- |  |  |
|--|--|
| <input type="checkbox"/> Coloured covers/<br>Couverture de couleur   | <input type="checkbox"/> Coloured pages/<br>Pages de couleur   |
| <input type="checkbox"/> Covers damaged/<br>Couverture endommagée  | <input type="checkbox"/> Pages damaged/<br>Pages endommagées   |
| <input type="checkbox"/> Covers restored and/or laminated/<br>Couverture restaurée et/ou pelliculée  | <input checked="" type="checkbox"/> Pages restored and/or laminated/<br>Pages restaurées et/ou pelliculées   |
| <input type="checkbox"/> Cover title missing/<br>Le titre de couverture manque   | <input type="checkbox"/> Pages discoloured, stained or foxed/<br>Pages décolorées, tachetées ou piquées  |
| <input type="checkbox"/> Coloured maps/<br>Cartes géographiques en couleur   | <input type="checkbox"/> Pages detached/<br>Pages détachées  |
| <input type="checkbox"/> Coloured ink (i.e. other than blue or black)/<br>Encre de couleur (i.e. autre que bleue ou noire)   | <input type="checkbox"/> Showthrough/<br>Transparence  |
| <input type="checkbox"/> Coloured plates and/or illustrations/<br>Planches et/ou illustrations en couleur  | <input type="checkbox"/> Quality of print varies/<br>Qualité inégale de l'impression   |
| <input type="checkbox"/> Bound with other material/<br>Relié avec d'autres documents   | <input type="checkbox"/> Includes supplementary material/<br>Comprend du matériel supplémentaire   |
| <input type="checkbox"/> Tight binding may cause shadows or distortion<br>along interior margin/<br>La reliure serrée peut causer de l'ombre ou de la<br>distorsion le long de la marge intérieure   | <input type="checkbox"/> Only edition available/<br>Seule édition disponible   |
| <input type="checkbox"/> Blank leaves added during restoration may<br>appear within the text. Whenever possible, these<br>have been omitted from filming/<br>Il se peut que certaines pages blanches ajoutées<br>lors d'une restauration apparaissent dans le texte,<br>mais, lorsque cela était possible, ces pages n'ont<br>pas été filmées. | <input type="checkbox"/> Pages wholly or partially obscured by errata<br>slips, tissues, etc., have been refilmed to<br>ensure the best possible image/<br>Les pages totalement ou partiellement<br>obscurcies par un feuillet d'errata, une pelure,<br>etc., ont été filmées à nouveau de façon à<br>obtenir la meilleure image possible. |
| <input checked="" type="checkbox"/> Additional comments: /<br>Commentaires supplémentaires:  | [Printed ephemera] 1 sheet (verso blank)   |

This item is filmed at the reduction ratio checked below/  
Ce document est filmé au taux de réduction indiqué ci-dessous.

10X	12X	14X	16X	18X	20X	22X	24X	26X	28X	30X	32X
						✓					

The copy filmed here has been reproduced thanks to the generosity of:

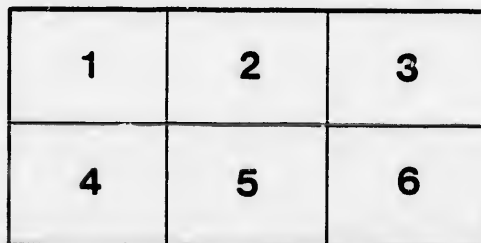
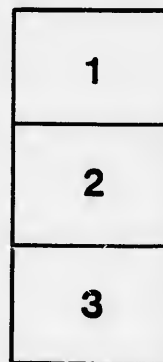
New Brunswick Museum  
Saint John

The images appearing here are the best quality possible considering the condition and legibility of the original copy and in keeping with the filming contract specifications.

Original copies in printed paper covers are filmed beginning with the front cover and ending on the last page with a printed or illustrated impression, or the back cover when appropriate. All other original copies are filmed beginning on the first page with a printed or illustrated impression, and ending on the last page with a printed or illustrated impression.

The last recorded frame on each microfiche shall contain the symbol  $\rightarrow$  (meaning "CONTINUED"), or the symbol  $\nabla$  (meaning "END"), whichever applies.

Maps, plates, charts, etc., may be filmed at different reduction ratios. Those too large to be entirely included in one exposure are filmed beginning in the upper left hand corner, left to right and top to bottom, as many frames as required. The following diagrams illustrate the method:



L'exemplaire filmé fut reproduit grâce à la générosité de:

New Brunswick Museum  
Saint John

Les images suivantes ont été reproduites avec la plus grande soin, compte tenu de la condition et de la netteté de l'exemplaire filmé, et en conformité avec les conditions du contrat de filmage.

Les exemplaires originaux dont la couverture en papier est imprimée sont filmés en commençant par la première page et en terminant soit par la dernière page qui comporte une empreinte d'impression ou d'illustration, soit par la seconde page, selon le cas. Tous les autres exemplaires originaux sont filmés en commençant par la première page qui comporte une empreinte d'impression ou d'illustration et en terminant par la dernière page qui comporte une telle empreinte.

Un des symboles suivants apparaîtra sur la dernière image de chaque microfiche, selon le cas: le symbole  $\rightarrow$  signifie "A SUIVRE", le symbole  $\nabla$  signifie "FIN".

Les cartes, planches, tableaux, etc., peuvent être filmés à des taux de réduction différents. Lorsque le document est trop grand pour être reproduit sur un seul cliché, il est filmé à partir de l'angle supérieur gauche, de gauche à droite, et de haut en bas, en prenant le nombre d'images nécessaire. Les diagrammes suivants illustrent la méthode.

## CIRCULAR.

Fredericton, 15th June, 1853.

SIR,—The York County Agricultural Society met yesterday and appointed a committee to import a Horse for the County, from Great Britain, under the terms of a Resolution of the Legislature of the 3d of May last; the committee were instructed to invite the co-operation of other Counties in the measure, and we wish to know if your Society be disposed to join with us. We propose that an agent or perhaps two be sent home as early in July as possible, with instructions from each Society as to the description of Horse wanted, and the necessary funds, letters of credit, &c.

Time is important and immediate action necessary. We propose to have a meeting at Fredericton on the 30th instant, to nominate the agent and furnish him with instructions, &c., and if you are disposed to act with us, please to appoint some person to represent you at the meeting, at which it is proposed that each County shall have an equal voice in selecting the agent.

We are expecting the New Brunswick Society to join us in an application to the Executive, for an advance of funds in aid, or such other action as will enable us to act without assuming too heavy a pecuniary responsibility. The Council meet on the 21st instant.

*Our Committee consists of*

MESSRS. J. A. BECKWITH,  
LEWIS HUESTIS,  
THOMAS MURRAY,  
GEORGE MOREHOUSE,  
JOHN DUFFY, and  
DR. ROBB,

and we will be glad to be informed if we may expect to hear from you at the meeting.

On behalf of the Committee,

I am, sir, your obedient servant,

J. A. BECKWITH, *Chairman.*

---

HOUSE OF ASSEMBLY, TUESDAY, May 3rd, 1853.

On motion of Mr. Earle,

Whereas it is of importance to the Agricultural and Lumbering Interests of the Country, that a superior breed of Horses should be imported into the Province from Great Britain, Canada, or the United States; therefore

*Resolved*, That an humble Address be presented to His Excellency the Lieutenant Governor, praying that His Excellency, on the application of the Agricultural Societies in the respective Counties of this Province, through the President and Secretary of the principal Society in each County, setting forth that such Society has actually imported from Great Britain, Canada, or the United States, a superior Stud Horse, approved of by such Society, and that the same will be kept within such County for at least three years from the time of arrival in this Province, with an account of the expence incurred in purchasing and importing the same, duly attested, will be pleased in each of such cases to cause a Warrant to issue in favor of the President of such principal Society, for a sum not exceeding £250, provided that such Warrant shall be for £50 less than the cost of the said Horse when landed in this Province.

This resolution was concurred in by the Legislative Council.

