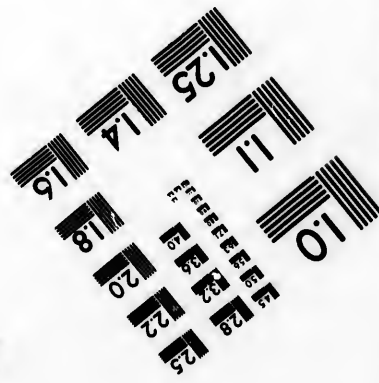
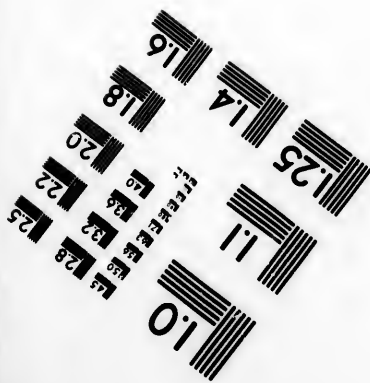
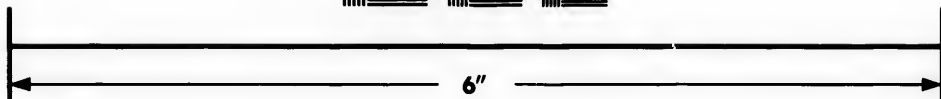
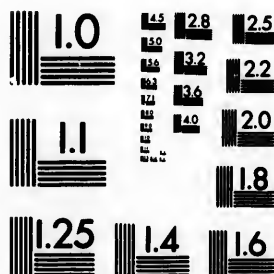


**IMAGE EVALUATION
TEST TARGET (MT-3)**



**Photographic
Sciences
Corporation**

23 WEST MAIN STREET
WEBSTER, N.Y. 14580
(716) 872-4503

10
11
12
13
14
15
16
17
18
19
20
21
22
23
24
25

**CIHM/ICMH
Microfiche
Series.**

**CIHM/ICMH
Collection de
microfiches.**



Canadian Institute for Historical Microreproductions / Institut canadien de microreproductions historiques

10
11
12
13
14
15
16
17
18
19
20

© 1983

Technical and Bibliographic Notes/Notes techniques et bibliographiques

The Institute has attempted to obtain the best original copy available for filming. Features of this copy which may be bibliographically unique, which may alter any of the images in the reproduction, or which may significantly change the usual method of filming, are checked below.

L'Institut a microfilmé le meilleur exemplaire qu'il lui a été possible de se procurer. Les détails de cet exemplaire qui sont peut-être uniques du point de vue bibliographique, qui peuvent modifier une image reproduite, ou qui peuvent exiger une modification dans la méthode normale de filmage sont indiqués ci-dessous.

- Coloured covers/
Couverture de couleur
- Covers damaged/
Couverture endommagée
- Covers restored and/or laminated/
Couverture restaurée et/ou pelliculée
- Cover title missing/
Le titre de couverture manque
- Coloured maps/
Cartes géographiques en couleur
- Coloured ink (i.e. other than blue or black)/
Encre de couleur (i.e. autre que bleue ou noire)
- Coloured plates and/or illustrations/
Planches et/ou illustrations en couleur
- Bound with other material/
Relié avec d'autres documents
- Tight binding may cause shadows or distortion along interior margin/
Le livre serré peut causer de l'ombre ou de la distorsion le long de la marge intérieure
- Blank leaves added during restoration may appear within the text. Whenever possible, these have been omitted from filming/
Il se peut que certaines pages blanches ajoutées lors d'une restauration apparaissent dans le texte, mais, lorsque cela était possible, ces pages n'ont pas été filmées.
- Additional comments:/
Commentaires supplémentaires:

- Coloured pages/
Pages de couleur
- Pages damaged/
Pages endommagées
- Pages restored and/or laminated/
Pages restaurées et/ou pelliculées
- Pages discoloured, stained or foxed/
Pages décolorées, tachetées ou piquées
- Pages detached/
Pages détachées
- Showthrough/
Transparence
- Quality of print varies/
Qualité inégale de l'impression
- Includes supplementary material/
Comprend du matériel supplémentaire
- Only edition available/
Seule édition disponible
- Pages wholly or partially obscured by errata slips, tissues, etc., have been refilmed to ensure the best possible image/
Les pages totalement ou partiellement obscurcies par un feuillet d'errata, une pelure, etc., ont été filmées à nouveau de façon à obtenir la meilleure image possible.

This item is filmed at the reduction ratio checked below/
Ce document est filmé au taux de réduction indiqué ci-dessous.

10X	12X	14X	16X	18X	20X	22X	24X	26X	28X	30X	32X
				/							

The to th

The poss of the filmi

Origi begin the k sion, other first sion, or ill

The l shall TINU whic

Maps differ entire begin right requi meth

The copy filmed here has been reproduced thanks to the generosity of:

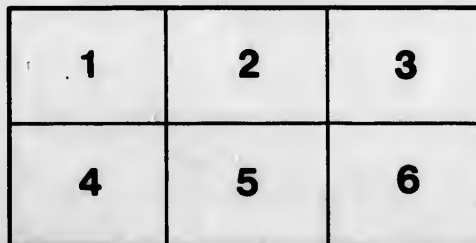
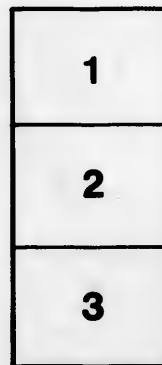
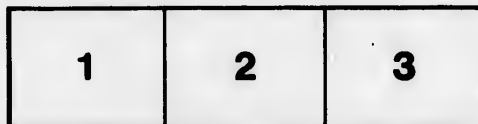
Library of the Public
Archives of Canada

The images appearing here are the best quality possible considering the condition and legibility of the original copy and in keeping with the filming contract specifications.

Original copies in printed paper covers are filmed beginning with the front cover and ending on the last page with a printed or illustrated impression, or the back cover when appropriate. All other original copies are filmed beginning on the first page with a printed or illustrated impression, ending on the last page with a printed or illustrated impression.

The last recorded frame on each microfiche shall contain the symbol → (meaning "CONTINUED"), or the symbol ∇ (meaning "END"), whichever applies.

Maps, plates, charts, etc., may be filmed at different reduction ratios. Those too large to be entirely included in one exposure are filmed beginning in the upper left hand corner, left to right and top to bottom, as many frames as required. The following diagrams illustrate the method:



L'exemplaire filmé fut reproduit grâce à la générosité de:

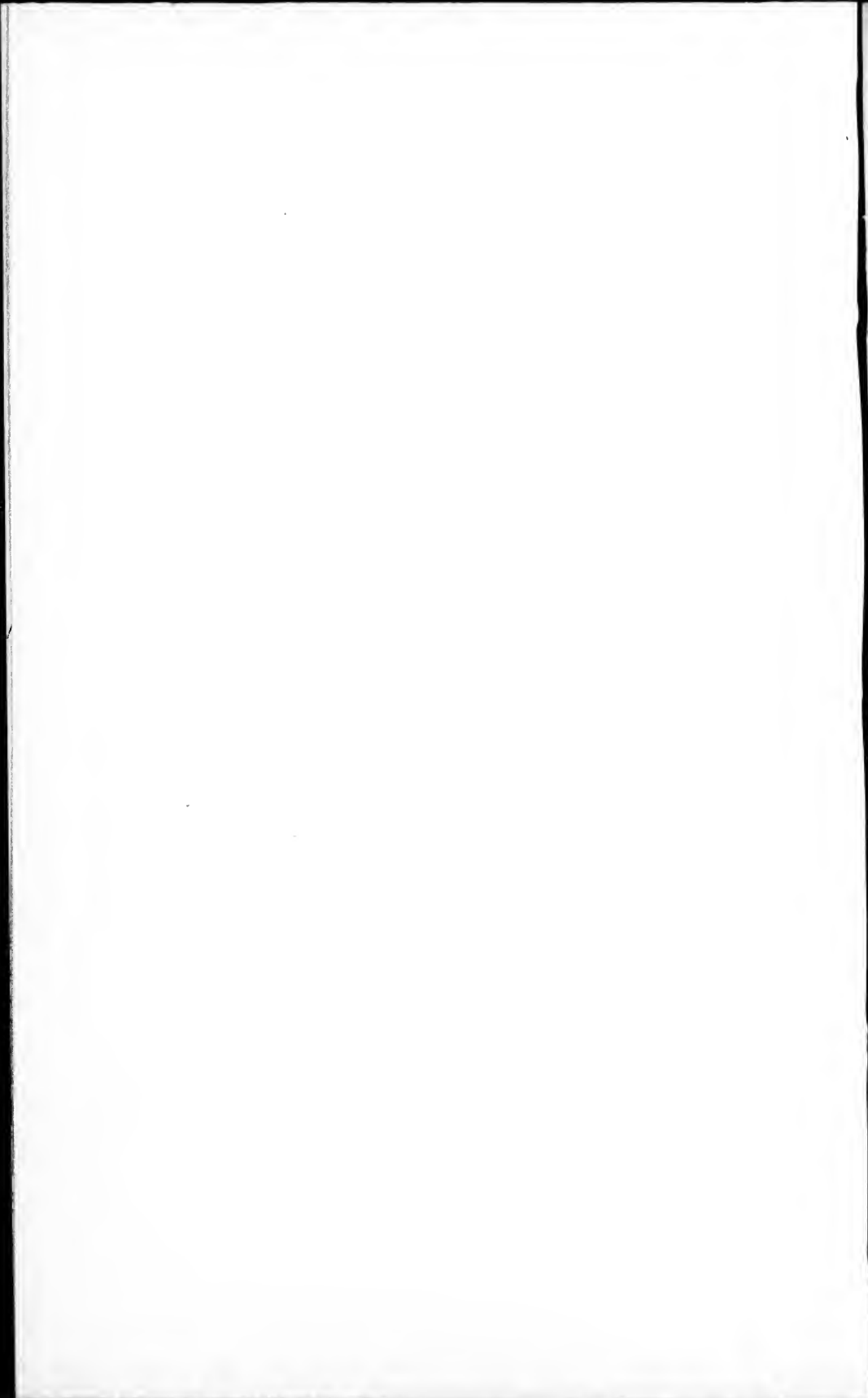
La bibliothèque des Archives
publiques du Canada

Les images suivantes ont été reproduites avec le plus grand soin, compte tenu de la condition et de la netteté de l'exemplaire filmé, et en conformité avec les conditions du contrat de filmage.

Les exemplaires originaux dont la couverture en papier est imprimée sont filmés en commençant par le premier plat et en terminant soit par la dernière page qui comporte une empreinte d'impression ou d'illustration, soit par le second plat, selon le cas. Tous les autres exemplaires originaux sont filmés en commençant par la première page qui comporte une empreinte d'impression ou d'illustration et en terminant par la dernière page qui comporte une telle empreinte.

Un des symboles suivants apparaîtra sur la dernière image de chaque microfiche, selon le cas: le symbole → signifie "A SUIVRE", le symbole ∇ signifie "FIN".

Les cartes, planches, tableaux, etc., peuvent être filmés à des taux de réduction différents. Lorsque le document est trop grand pour être reproduit en un seul cliché, il est filmé à partir de l'angle supérieur gauche, de gauche à droite, et de haut en bas, en prenant le nombre d'images nécessaire. Les diagrammes suivants illustrent la méthode.



Fragmentary text visible on the right edge of the page, including the letters "pr", "A", "D", and "B".

THE
NEWFOUNDLAND
ALMANAC,

FOR THE YEAR OF OUR LORD

1865,

[BEING THE LATTER PART OF THE TWENTY-EIGHTH AND THE
BEGINNING OF THE TWENTY-NINTH YEAR OF THE
REIGN OF HER MAJESTY QUEEN VICTORIA]

CONTAINING

ASTRONOMICAL, STATISTICAL, COMMERCIAL, LOCAL

AND

GENERAL INFORMATION,

DERIVED FROM THE MOST AUTHENTIC SOURCES.

— 00 —

COMPILED, PRINTED AND PUBLISHED BY

JOSEPH WOODS.

Sold by **THOMAS MCCONNAN**, 212 Water Street, St. John's.

— — — — —
ST. JOHN'S, NEWFOUNDLAND:

MDCCLXV.

RARE

AY

420

N49N4

1865

THE NEWFOUNDLAND ALMANAC.

To the Public.

THE Compiler has much pleasure in submitting to the patronage of the Public, THE NEWFOUNDLAND ALMANAC FOR THE YEAR 1865; and though it may contain, and doubtless it does, some inaccuracies, he hopes notwithstanding that the information it embodies will be found both useful and interesting.

THE ALMANAC for 1865 contains information never before embraced in the pages of any of its predecessors. The Moon's Risings, from early evening to early morning, each month, which will be found in the Calendar Pages, will prove useful to many, especially to our Outport people. The work contains, also, the Tariff, with the Duties put in Decimal Currency as well as British Sterling, which cannot fail to be a convenience to the Trade. In the Appendix is a list of the Post Towns and Way Offices in the Colony, together with a complete Post Office Directory alphabetically arranged.

The undersigned is indebted to the worthy Principal of the St. John's Nautical Academy, JAMES CAMPBELL, Esq., for the Astronomical and Scientific information contained in the present No. of THE ALMANAC, with the exception of the "Meteorological Observations," furnished, as usual, by E. M. J. DELANEY, Esq., C.E, of the Board of Works Department; he is also indebted to the Heads of Departments, and others, for the kindness and avidity with which required information was supplied.

The undersigned would express his acknowledgments to the public for the favorable manner in which THE ALMANAC has hitherto been received, and hopes that the No. for 1865 will receive like favor and consideration. He trusts, also, that the attractive form and the conspicuous position given to the favours of the advertising patrons of THE ALMANAC will meet their approval.

Contents.

Advertisements	
Abstract from Newfoundland Census of 1857	56
Appendix	64-75
Board of Revenue	23
Board of Works	24
Boards of Road Commissioners (Outports)	21
Board of Health	37
Barristers and Attornies of Supreme Court	37
Barristers and Attornies, Harbor Grace	37
Banks—Savings' Bank	35
Union Bank of Newfoundland	47
Commercial Bank of Newfoundland	47
Benevolent Institutions, Charitable Societies, &c.	60
Calendar, Chronological Eras, &c.	6
Calendar Pages—Moon's Phases, Sun's Rising and Setting at St. John's every day in the year, Sun's Declination, Equation of Time, High Water at St. John's every Morning and Afternoon, Moon's Rising, Memoranda,	9-20
Colonial Secretary's Office	22
Customs Department	23
Court Houses and Keepers	26
Commissioners for Erection of Public Wharf (Catalina)....	26
Commissioners for Erection of Breakwaters	27
Commissioners of Poor	35
Commissioners for Reduction of Public Debt	35
Commissioners of Pilots and Rates of Pilotage	36
Commissioners of Wrecked Property	36
Clerks of the Peace	39
Coroners	40
Commercial Schools	40
Colonial and Continental Church Society and Schools....	41
Clergy of different Denominations	44
Convents	46
Chamber of Commeres (St. John's)	47
Commissioners of Affidavits, &c, in S. and C. C. Courts....	38
District Surgeons	26
Eclipses for the year 1865	5
Executive Council	21
Fixed and Moveable Festivals, Anniversaries, &c.	6
Financial Secretary's Office	23
Foreign Consuls	48
Governor, Commander-in-Chief, and Vice-Admiral of Newfoundland	21
Goals and Goalers	26
Grammar Schools	40
House of Assembly	21
Harbor Grace Free School (St. Patrick's)	37
Her Majesty's Chief Officers of State	63
Inspectors of Weights and Measures	40

Insurance Companies—Fire, Life, and Marine	57
Judicial Department	37
Justices of the Peace	39
Joint Stock Companies, Public Societies, &c.	58
Latitude and Longitude of St. John's	6
Legislative Council	21
Light Houses and Lights	27
Labrador Court	39
Laymen Licensed to Celebrate Marriage	47
Meteorological Observations for the years 1861, '62 and '63.	7
Military Establishment	49
Note to Tide Tables	8
Newfoundland Church Society	45
Newfoundland Rifle Volunteers	50
Naval Establishment	50
Notaries Public	48
Newspapers published in the Colony	62
Outfit for the Seal Fishery, 1864	50
Private Secretary to the Governor	21
Post Office Department, Postal Routes and Rates of Postage	30
Police	40
Protestant Boards of Education	42
Queen's Printer	48
Revenue Establishment	23
Roman Catholic Schools	43
Roman Catholic Boards of Education	43
Revenue and Expenditure, from 1854 to 1863	55
Royal Family of England	62
Surveyor General's Department	22
Shipping Master and Emigrant Agent	23
St. John's Hospital	26
St. John's Poor House	26
St. John's Lunatic Asylum	26
Stipendiary Magistrates	38
St. John's Academy	40
St. John's Presbyterian School	42
St. John's Catholic College of St. Bonaventure	45
St. John's and Newfoundland Bible Society	54
Ships Owned and Registered in Newfoundland	50
Sterling value of Imports and Exports from and to each Country in 1863	55
Treasury Department	23
Terms of Supreme and Central Circuit Courts	37
Theological Institution (Church of England)	45
Table of Customs Duties, in British Sterling and Decimal Currency	51
Table shewing Quantity and Value of Fish Exported from 1840 to 1863	54
Vice Admiralty Court	37
Value of Imports and Exports from 1854 to 1862	54
Wesleyan Academy	40
Wesleyan School and Agency Society and Schools	41
Wesleyan Academy (Carbonear)	75
Young Men's Christian Association	76

Eclipses, 1865.

In the year 1865 there will be *four Eclipses*—TWO of the SUN, and TWO of the MOON.

The 1st on April the 10th, a *partial Eclipse of the Moon*, visible in Newfoundland. If the sky happen to be clear and the weather favourable, this Eclipse will be an interesting phenomenon; as the Moon will be above our horizon during its continuance; for on this day, the Moon will rise 31 minutes past 6, p.m., at St. John's, and set 18 minutes past 5, a.m. next morning.

First contact with Penumbra, April 10th, at 10h 32m 0 p.m.	} Mean Time at St. John's
First contact with Shadow April 11th at 0h 14m 41s a.m.	
Middle of Eclipse at 1h 7m 17s a.m.	
Last contact with Shadow at 1h 59m 53s a.m.	
Last contact with Penumbra at 3h 42m 35s a.m.	

During these times the Moon will pass *vertically* from Longitude 31.46 W. of Greenwich to 107.8 W.; on the parallel of Latitude 9. S. 9

The 2nd on April 25th, a *total Eclipse of the Sun*, invisible in the Northern hemisphere, as it begins in Longitude 76.35 W. of Greenwich, and in Latitude 31.24 S., and ends in Longitude 18.30 E. of Greenwich, and in Latitude 4.25 S.

The 3rd on Oct. the 4th, a *partial Eclipse of the Moon*, visible in Newfoundland. At St. John's the Moon will rise at 39 minutes past 5, p.m., on the 4th; and will set 9 minutes past 6 a.m. on the 5th, so that the first contact of the Moon with the Earth's Penumbra cannot be seen in this Island:

Moon's first contact with Penumbra, October 4th, at 4h 55m 11s p.m.	} Mean Time at St. John's, N.F.
“ first contact with Shadow at 6h 8m 29s p.m.	
Middle of Eclipse at 7h 9m 11s p.m.	
Last contact with Shadow at 8h 9m 53s p.m.	
Last contact with Penumbra at 9h 23m 11s p.m.	

Moon's true altitude at St. John's at middle of Eclipse 15.19.

The Sun will set on the 4th at 40 minutes past 5, at St. John's; so that at the instant the Sun's lower limb touches the horizon in the West, the Moon's upper limb will be seen rising in the East; but as the Moon will be then in the Earth's Penumbra, she will afford but a faint dull light.

The 4th on October the 19th, an *annular Eclipse of the Sun*, visible as a partial one in Newfoundland:

Begins on the Earth generally Oct. 19th at 9h 54m 26s a.m.	} Mean Time at St. John's, N.F.
Central Eclipse begins generally at 11h 10m 2s a.m.	
Sun and Moon's conjunction in R. A. (central Eclipse) at 0h 32m 32s p.m.	
Central Eclipse ends generally at 32h 30m 2s p.m.	
Ends on the Earth generally at 3h 46m 8s p.m.	

The following are the elements of the Sun and Moon at the instant of conjunction.

67.
37.
39.
58.
8.
21.
27.
39.
47.
7.
49.
8.
45.
50.
50.
48.
62.
50.
21.
30.
40.
42.
48.
23.
43.
43.
55.
62.
62.
23.
26.
26.
26.
38.
40.
42.
45.
64.
50.
55.
23.
37.
45.
51.
54.
37.
54.
40.
41.
75.
76.

THE NEWFOUNDLAND ALMANAC.

	Declination	Semidiameter	Equatorial Horizontal Parallax
Moon	9.39.21.3.S	14.43.4	53.56.4
Sun	10.9.18.4.S	16.6.6.	8.6

As the Moon will be very near her apogee at the time of this Eclipse, her Shadow will not quite reach the earth; but the Sun's light will be very much obscured by her Penumbra; the central path of which first touches the earth and begins in Longitude 122.52 W. of Greenwich, and in Latitude 47.12 N., that is about Vancouver's Island, thence passing South-east over the gold regions of British Columbia, the Rocky Mountains, &c., thence directly over the embattled plains of North America (now so drenched with human gore as to appear a reflection of the murky, lurid light the Sun casts in passing over them), thence over Florida, across the Atlantic, and ends in Africa in Longitude 7.10 W., and in Latitude 16.50 N. So that this Eclipse will be visible in all North America, in part of South America, in all the Atlantic Ocean, in part of Africa, in Spain, Portugal, France, England, &c., but not visible in the eastern parts of Europe, nor in any part of Asia.

Calendar.

Golden Number 4	Dominical Letter A.
Epact 3	Roman Indiction 8.
Solar Cycle 26	Julian Period 6578.

Fixed and Moveable Festivals, Anniversaries, &c.

Epiphany	January 6	Ascension Day	May 25.
Septuagesima Sunday	February 12	Pentecost—Whit Sunday	June 4.
Shrove Sunday	do	Trinity Sunday	do 11
Ash Wednesday	March 1	Corpus Christi	do 15
St. David	do	Accession Queen Victoria	do 20
First Sunday in Lent	do	Proclamation	do 21
St. Patrick	do	St. John Baptist—Midsummer	24
Annunciation—Lady Day	do	Birth of Prince Consort	Aug. 26.
Palm Sunday	April 9	St. Michael	September 29.
Good Friday	do	Birth Prince of Wales	Novem. 9
Easter Sunday	do	St. Andrew	do 30.
Low Sunday	do	1st Sunday in Advent	Dec. 3
St. George	do	St. Thomas	do 21
Rogation Sunday	May 21	Christmas Day	do 25.
Birth Queen Victoria	do 24		

The Year 5626 of the Jewish Era commences on September 21, 1865.

Ramadan (Month of Abstinence observed by the Turks) commences on January 28, 1865.

The Year 1282 of the Mohammedan Era commences on May 27, 1865.

The Weather.

Result of Meteorological Observations for the Years, 1861, 1862, 1863, taken from the Colonial Building, St. John's, Newfoundland, by E. M. J. DELANEY, Esq., C.E., Observer.—Lat. N. 47.34.30 —Long. W. 52.39.45—170 feet above Sea Level.

1861.

	Inches.	Date.
Max. height of Bar. corrected to sea level	30.30	October 27th
Min. do do	28.50	January 20th
Mean do do	29.40	
Max. height of Ther. do	86 °	July 10th
Min. do do	—3 °	February 9th
Quantity of Rain and melted Snow in inches	58.630	the year
Prevailing Winds	NNW.&SSW.	
Rain fell on 108 days; Snow on 40; Thunder and Lightning 4; Fog 92; 30th June a large Comet appeared.		

1862.

Max. height of Bar. corrected to sea level.	30.50	May 2nd
Min. do do	28.57	January 3rd
Mean do do	29.53	
Max. height of Ther.	75 °	July 6th
Min. do do	—7 °	February 18th
Mean temp. for year	41 °	
Quantity of Rain and melted Snow in inches	53.670	the year
Prevailing Winds	NNW.&SW.	
Rain fell on 98 days; Snow on 44; Fog 70; Thunder and Lightning 4; Harbor blockaded with Ice from middle of April to middle of June		

1863.

Max. height of Bar. corrected to sea level	30.48	November 16th
Min. do do	28.80	April 1st
Mean do do	29.60	
Max. height of Ther.	83 °	July 30th
Min. do do	*—14½ °	February 13th
Mean temp. for year	44 °	
Quantity of Rain and melted Snow in inches	73.550	the year
Prevailing Winds	NNW.&SSW.	
Rain fell on 98 days; Snow on 66 days; Fog 86 days; Thunder and Lightning 15 days.		
*Note—The algebraic sign (minus) before a figure denotes below Zero.		

THE NEWFOUNDLAND ALMANAC.

St. John's.

True Latitude of Church Hill 47.34.30 North
 Longitude (West of Greenwich) 52.44.0 West.

NOTE.—The Tide Tables (in the Calendar pages) may be rendered applicable to various other places on the coast, by simply adding or subtracting as the case may be, the difference between the times of High Water or the Full and Change of the Moon at St. John's, and the time of the full tide at any other harbor; for example, to find the time of High Water at any of the principal harbors of Conception Bay, add 45 minutes to the time at which it will be High Water at St. John's; for Placentia, add 2 hours; for St. Peter's 1h. 50m.; for Ferrolle, on the French Shore, 4 hours, &c.—See Table LVII. of Norie's Epitome.

A Table

Shewing the Difference of Time at various places on the Globe, as compared with St. John's, Newfoundland.

When it is NOON at St. John's it is

	18 minutes past 11 o'clock A. M. at Charlottetown, P.E.I.				
West. Longitude.	17	do	11	do	Halifax.
	13	do	11	do	St. John, N.B.
	50	do	10	do	Portland, Me.
	47	do	10	do	Boston, Mass.
	46	do	10	do	Quebec.
	34	do	10	do	New York.
	30	do	10	do	Philadelphia.
	23	do	10	do	Washington.
	21	do	7	do	St. Francisco, California.
	14	do	7	do	St. Juan, Vancouver's Is.
East. Long.	30	do	3	P. M.	Greenwich.
	20	do	4	do	Rome.
	26	do	5	do	Constantinople.
	52	do	5	do	Jerusalem.
	50	do	8	do	Madras, E.I.
	8	do	11	do	Canton.

FIRST
FULL M
LAST C
NEW M

Day of W.	Day of M.
Su.	1
M	2
T	3
W	4
Th.	5
F	6
S	7
Su.	8
M	9
T	10
W	11
Th.	12
F	13
S	14
Su.	15
M	16
T	17
W	18
Th.	19
F	20
S	21
Su.	22
M	23
T	24
W	25
Th.	26
F	27
S	28
Su.	29
M	30
T	31

JAN
mans
day of
prayer
year.
and l
lookin

JANUARY, 31 DAYS.

MOON'S PHASES.

FIRST QUARTER..... 4th day, 0h, 11m, Evening
 FULL MOON..... 11th day, 7h, 28m, Evening
 LAST QUARTER..... 19th day, 11h, 5m, Evening
 NEW MOON..... 27th day, 5h, 59m, Morning

Day of W.	Day of M.	Sun rises	Sun sets	G. app time.		High		Memoranda.
				Sun's Declination.	Equa of time.	Water at St. John's.		
		St. John's.	at St. John's.	o	m. s.	p. m.	a. m.	
SU.	1	7 55	4 13	S 23 0	4 0	10 0	9 38	First meeting of Local Legislature, 1833.
M	2	7 54	4 14	22 54	4 28	10 53	10 21	
T	3	7 54	4 15	22 49	4 56	11 31	11 6	
W	4	7 54	4 16	22 42	5 23		11 53	
Th.	5	7 54	4 17	22 36	5 50	0 48	0 21	
F	6	7 54	4 19	22 29	6 16	1 49	1 18	Epiphany.
S	7	7 53	4 20	22 21	6 42	3 3	2 26	
SU.	8	7 53	4 21	22 13	7 8	4 19	3 40	1st Sun. after Epiphany
M	9	7 53	4 22	22 5	7 33	5 40	5 16	R. Catholic Cathedral
T	10	7 52	4 24	21 56	7 57	6 29	6 1	[opened, 1850.
W	11	7 52	4 25	21 46	8 21	7 18	6 55	Moon rises at 58m past
Th.	12	7 51	4 26	21 37	8 44	7 59	7 39	4, evening.
F	13	7 51	4 27	21 26	9 6	8 39	8 21	Moon rises at 3m past
S	14	7 50	4 29	21 16	9 28	9 14	8 58	7, evening.
SU.	15	7 50	4 30	21 5	9 49	9 47	9 31	
M	16	7 49	4 31	20 54	10 10	10 20	10 4	Moon rises at 6m past
T	17	7 48	4 33	20 42	10 30	10 54	10 38	9, evening.
W	18	7 47	4 34	20 30	10 49	11 29	11 11	Moon rises at 6m past
Th.	19	7 46	4 36	20 17	11 7		11 46	11, evening.
F	20	7 45	4 37	20 4	11 25	0 25	0 6	Moon rises at 5m past
S	21	7 44	4 38	19 51	11 42	1 11	0 47	1, morning.
SU.	22	7 44	4 40	19 37	11 58	2 19	1 42	Moon rises at 4m past
M	23	7 43	4 42	19 23	12 13	3 34	2 57	3, morning.
T	24	7 42	4 43	19 9	12 28	4 50	4 11	Moon rises at 54m past
W	25	7 41	4 45	18 54	12 42	5 55	5 25	4, morning.
Th.	26	7 40	4 46	18 39	12 55	6 47	6 22	Moon rises at 28m past
F	27	7 38	4 48	18 23	13 7	7 33	7 10	6, morning.
S	28	7 37	4 49	18 8	13 18	8 18	7 56	2d Sess. 8th Gen. Ass.
SU.	29	7 36	4 51	17 52	13 29	9 2	8 41	opened, 1862.
M	30	7 35	4 52	17 35	13 39	9 44	9 22	29—4th Sunday after
T	31	7 33	4 54	S 17 18	13 48	10 28	10 6	Epiphany.

JANUARY.—January (Latin *Januarius*) was so called by the Romans from Janus, one of their superior deities to whom the first day of the year was sacred, and through whom they offered their prayers to the gods; hence the name is used to signify gate of the year. Janus was represented with two faces; one old and wrinkled, and looking backward; the other face young and smiling, and looking forward.

FEBRUARY. 28 DAYS.

MOON'S PHASES.

FIRST QUARTER..... 2nd day, 9h, 37m, Evening
 FULL MOON..... 10th day, 0h, 55m, Evening
 LAST QUARTER 18th day, 6h, 6m, Evening
 NEW MOON..... 25th day, 4h, 32m, Evening

Day of W.	Day of M.	Sun		G. opp. time.		High		Memoranda.
		rises	Sun sets at St. John's.	Sun's Declination.	Equation of time.	Water at St. John's.		
		h. m.	h. m.	o	m. s.	p. m.	a. m.	
W	1	7 32	4 55	S 17 1	13 56	11 12	10 50	
Th.	2	7 31	4 57	16 44	14 3	11 59	11 35	Candlemas Day.
F	3	7 29	4 59	16 26	14 10	0 47	0 23	
S	4	7 28	5 0	16 9	14 15	1 52	1 17	
SU.	5	7 27	5 2	15 50	14 20	3 11	2 31	5th Sun after Epiphany
M	6	7 25	5 3	15 32	14 24	4 38	3 54	10—Q. Vic. mar. 1840.
T	7	7 24	5 5	15 13	14 27	5 51	5 16	
W	8	7 22	5 7	14 54	14 29	6 29	6 10	
Th.	9	7 20	5 8	14 35	14 31	7 6	6 43	
F	10	7 19	5 10	14 16	14 31	7 46	7 27	Moon rises 52 minutes past 5, evening.
S	11	7 17	5 11	13 56	14 31	8 22	8 3	Moon rises 54 minutes past 7, evening.
SU.	12	7 16	5 13	13 36	14 30	8 53	8 38	Moon rises 55 minutes past 9, evening.
M	13	7 14	5 15	13 16	14 29	9 24	9 10	Moon rises 52 minutes past 11, evening.
T	14	7 13	5 16	12 56	14 26	9 56	9 41	Moon rises 51 minutes past 0, morning.
W	15	7 11	5 18	12 35	14 23	10 26	10 11	Moon rises 45 minutes past 2, morning.
Th.	16	7 9	5 19	12 14	14 20	10 55	10 40	Moon rises 12 minutes past 4, morning.
F	17	7 7	5 21	11 53	14 15	11 29	11 11	Moon rises 26 minutes past 5, morning.
S	18	7 6	5 22	11 32	14 10		11 46	Moon rises 12 minutes past 7, morning.
SU.	19	7 4	5 24	11 11	14 4	0 29	0 6	Moon rises 26 minutes past 8, morning.
M	20	7 3	5 25	10 49	13 58	1 25	0 56	Moon rises 12 minutes past 9, morning.
T	21	7 2	5 26	10 28	13 51	2 43	2 0	Moon rises 26 minutes past 10, morning.
W	22	7 0	5 27	10 6	13 43	4 9	3 27	Moon rises 12 minutes past 11, morning.
Th.	23	6 59	5 29	9 44	13 35	5 27	4 51	Moon rises 26 minutes past 12, morning.
F	24	6 57	5 30	9 22	13 26	6 22	5 57	Moon rises 12 minutes past 1, morning.
S	25	6 55	5 32	8 59	13 16	7 12	6 46	Moon rises 26 minutes past 2, morning.
SU.	26	6 52	5 34	8 37	13 6	7 57	7 36	24—Napoleon I escaped from Elba, 1815.
M	27	6 51	5 35	8 14	12 55	8 42	8 19	
T	28	6 49	5 36	S 7 52	12 44	9 24	9 4	26—Shrove Sunday.

FEBRUARY.—February (Latin, *Februarius*) received its name from Februalia, a feast of sacrifices and purifications held by the Romans in this month, in the vain hope of being cleansed from the sins of the whole year. It corresponds to ADAR (Ezra vi. 15,) the sixth civil, and twelfth sacred month of the Jews. By the Saxons it was called *Sproutkele*, as cabbages begin to sprout now; and also *Sol-monath*, the month when pancakes were offered to Sol, or the Sun.

FIRST
FULL
LAST
NEW

Day of W.
Day of M.

W 1
Th. 2
F 3
S 4
SU. 5
M 6
T 7
W 8
Th. 9
F 10
S 11
SU. 12
M 13
T 14
W 15
Th. 16
F 17
S 18
SU. 19
M 20
T 21
W 22
Th. 23
F 24
S 25
SU. 26
M 27
T 28

M
in ho
went
(Neh
the s
mond

MARCH, 31 DAYS.

MOON'S PHASES.

FIRST QUARTER..... 4th day, 8h, 47m, Morning
 FULL MOON..... 12th day, 7h, 10m, Morning
 LAST QUARTER..... 20th day, 9h, 5m, Morning
 NEW MOON..... 27th day, 1h, 57m, Morning

Day of W.	Day of M.	Sun		G. app. time.		High		Memoranda.
		rises	Sun sets	Sun's Declination.	Equa of time. subt.	Water at St. John's.		
		at St. John's.						
		h. m.	h. m.	o	m. s.	p. m.	a. m.	
W	1	6 45	5 39	S 7 29	12 32	10 8	9 46	Ash Wednesday
Th.	2	6 44	5 41	7 6	12 20	10 50	10 29	J. Wesley died 1791.
F	3	6 42	5 42	6 43	12 7	11 35	11 11	B. & F. Bible Society
S	4	6 40	5 44	6 20	11 54		11 58	established, 1804
SU.	5	6 38	5 45	5 57	11 40	0 51	0 24	1st Sunday in Lent
M	6	6 36	5 47	5 34	11 26	2 0	1 23	
T	7	6 34	5 48	5 10	11 12	3 17	2 24	7th Gen. Ass dissolved
W	8	6 32	5 50	4 47	10 57	4 53	4 10	by proclamation, 1861
Th.	9	6 30	5 51	4 24	10 41	5 57	5 29	
F	10	6 28	5 53	4 0	10 26	6 46	6 23	Moon rises 44 minutes
S	11	6 26	5 54	3 37	10 10	7 23	7 5	past 4, evening.
SU.	12	6 24	5 56	3 13	9 53	7 57	7 41	Moon rises 43 minutes
M	13	6 22	5 57	2 49	9 36	8 28	8 13	past 6, evening.
T	14	6 20	5 58	2 26	9 20	8 56	8 42	Moon rises 45 minutes
W	15	6 18	5 59	2 2	9 2	9 26	9 12	past 8, evening.
Th.	16	6 16	6 1	1 38	8 45	9 58	9 42	17—St. Patrick.
F	17	6 14	6 3	1 15	8 27	10 28	10 13	Moon rises 35 minutes
S	18	6 12	6 4	0 51	8 10	11 0	10 43	past 11, evening.
SU.	19	6 10	6 6	0 27	7 52	11 39	11 19	
M	20	6 8	6 7	S 0 4	7 34	0 2		
T	21	6 6	6 8	N 0 20	7 16	0 53	0 25	Moon rises 20 minutes
W	22	6 4	6 10	0 44	6 57	2 8	1 26	past 2, morning.
Th.	23	6 2	6 11	1 7	6 39	3 36	2 52	Moon rises 37 minutes
F	24	6 0	6 13	1 31	6 21	4 57	4 19	past 3, morning.
S	25	5 58	6 14	1 55	6 2	5 58	5 29	Moon rises 51 minutes
Sr.	26	5 56	6 16	2 18	5 44	6 48	6 23	past 4, morning.
M	27	5 54	6 17	2 42	5 25	7 32	7 10	25—Lady Day.
T	28	5 52	6 18	3 5	5 7	8 17	7 54	
W	29	5 50	6 20	3 29	4 49	9 0	8 39	
Th.	30	5 48	6 21	3 52	4 30	9 45	9 22	Peace with Russia
F	31	5 46	6 23	N 4 15	4 12	10 30	10 8	1856.

MARCH.—March (Latin, *Martius*) was so named by the Romans in honor of Mars their god of war. In this month the Gothic tribes went out on warlike expeditions. It answers to NISAN, or ABIB (Neh. ii. 1; Deut. xvi. 1), the seventh of the civil, and the first of the sacred year of the Jews. By the Saxons it was named *Hlydmonath*, the loud or windy month.

APRIL, 30 DAYS.

MOON'S PHASES.

FIRST QUARTER..... 2nd day, 9h, 47m, Evening
 FULL MOON..... 11th day, 0h, 56m, Morning
 LAST QUARTER..... 18th day, 7h, 49m, Evening
 NEW MOON..... 25th day, 10h, 42m, Morning

Day of W	Day of M.	Sun		G. app. time.		High		Memoranda.
		rises at St John's.	Sun sets	Sun's Declination.	Equation of time	Water at St. John's.		
		h. m.	h. m.	o	m. s.	p. m.	a. m.	
S	1	5 44	6 24	N 4 38	3 54	11 14	10 52	
Su.	2	5 42	6 25	5 1	3 36		11 37	5th Sunday in Lent
M	3	5 40	6 27	5 24	3 18	0 29	0 3	
T	4	5 38	6 28	5 47	3 0	1 34	0 59	Abdic. of Nap. I, 1814
W	5	5 36	6 30	6 10	2 42	2 55	2 14	
Th.	6	5 34	6 31	6 33	2 25	4 17	3 36	
F	7	5 32	6 32	6 55	2 8	5 24	4 52	Prince Leopold born, 1853
S	8	5 31	6 33	7 18	1 50	6 14	5 51	
Su.	9	5 28	6 35	7 40	1 34	6 52	6 34	Palm Sunday.
M	10	5 26	6 36	8 2	1 17	7 25	7 10	Moon rises 40 minutes past 6, evening.
T	11	5 24	6 38	8 24	1 1	7 57	7 41	Moon rises 36 minutes past 8, evening.
W	12	5 22	6 39	8 46	0 45	8 28	8 13	Moon rises 30 minutes past 9, evening.
Th.	13	5 20	6 41	9 8	0 29	9 0	8 44	Moon rises 30 minutes past 10, evening.
F	14	5 18	6 42	9 30	0 13	9 30	9 14	Easter Sunday.
S	15	5 16	6 44	9 51	0 2	10 2	9 47	Moon rises 15 minutes past 0, morning.
Su.	16	5 15	6 45	10 12	0 16	10 37	10 19	Moon rises 36 minutes past 1, morning.
M	17	5 13	6 46	10 33	0 31	11 18	10 56	Moon rises 46 minutes past 2, morning.
T	18	5 11	6 48	10 54	0 44		11 41	Moon rises 50 minutes past 3, morning.
W	19	5 9	6 49	11 15	0 58	0 35	0 7	Moon rises 2 minutes past 5, morning.
Th.	20	5 7	6 50	11 36	1 11	1 48	1 9	Moon rises 26 minutes past 6, morning.
F	21	5 5	6 52	11 56	1 23	3 10	2 31	23—St. George.
S	22	5 4	6 53	12 17	1 36	4 25	3 48	
Su.	23	5 2	6 54	12 37	1 47	5 30	5 1	
M	24	5 0	6 56	12 56	1 58	6 20	5 57	
T	25	4 58	6 57	13 16	2 9	7 8	6 45	
W	26	4 56	6 59	13 35	2 19	7 55	7 31	
Th.	27	4 55	7 0	13 55	2 29	8 41	8 17	
F	28	4 53	7 2	14 14	2 38	9 26	9 3	
S	29	4 51	7 3	14 32	2 47	10 10	9 48	
Su.	30	4 50	7 4	N 14 51	2 55	10 53	10 31	2d Sunday after Easter

Equation of time to be added to apparent time to the 14th, and to be subtracted the remainder of the month.

APRIL.—April (Latin, *Aprilis*) is so called from *aperire*, 'to open' in allusion to the opening of the young buds of trees and flowers and the general development of vegetation at this season.

MAY, 31 DAYS.

MOON'S PHASES.

FIRST QUARTER.....	2nd day,	0h, 33m,	Evening
FULL MOON.....	10th day,	4h, 51m,	Evening
LAST QUARTER.....	18th day,	3h, 8m,	Morning
NEW MOON.....	24th day,	7h, 18m,	Evening

Day of W.	Day of M.	Sun		G. app. time		High		Memoranda.
		rises	Sun sets	Sun's Declination.	Equa of time. subt.	Water at St. John's.		
		h. m.	h. m.	o	m. s.	p. m.	a. m.	
M	1	4 48	7 6	N 15 9	3 3	11 41	11 16	
T	2	4 47	7 7	15 27	3 10	0 7		General Election, 1861
W	3	4 45	7 8	15 45	3 17	1 5	0 34	13—1st Sess. 8th Gen.
Th.	4	4 43	7 10	16 2	3 23	2 16	1 39	Ass.op'd, 1861—Riots.
F	5	4 42	7 11	16 19	3 28	3 26	2 54	
S	6	4 40	7 12	16 36	3 33	4 36	4 1	
Su.	7	4 39	7 14	16 53	3 38	5 32	5 6	3d Sunday after Easter
M	8	4 38	7 15	17 9	3 42	6 14	5 55	
T	9	4 36	7 16	17 25	3 45	6 54	6 34	
W	10	4 35	7 18	17 41	3 48	7 27	7 11	Moon rises 28 minutes past 7, evening.
Th.	11	4 33	7 19	17 56	3 50	8 0	7 43	
F	12	4 32	7 20	18 12	3 52	8 35	8 19	Moon rises 22 minutes past 9, evening.
S	13	4 31	7 21	18 27	3 53	9 8	8 52	
Su.	14	4 29	7 23	18 41	3 53	9 44	9 25	Moon rises 58 minutes past 10, evening.
M	15	4 28	7 24	18 55	3 53	10 22	10 3	
T	16	4 27	7 25	19 9	3 52	11 3	10 43	
W	17	4 26	7 27	19 23	3 51	11 53	11 26	Moon rises 14 minutes past 0, morning.
Th.	18	4 24	7 28	19 36	3 49	0 20		Moon rises 19 minutes past 1, morning.
F	19	4 23	7 29	19 49	3 47	1 25	0 50	
S	20	4 22	7 30	20 2	3 44	2 43	2 4	Moon rises 20 minutes past 2, morning.
Su.	21	4 21	7 31	20 14	3 40	3 56	3 19	
M	22	4 21	7 32	20 26	3 36	5 3	4 31	Moon rises 33 minutes past 3, morning.
T	23	4 19	7 33	20 38	3 31	5 59	5 32	
W	24	4 18	7 34	20 49	3 26	6 52	6 26	Moon rises 10 minutes past 5, morning.
Th.	25	4 17	7 35	21 0	3 20	7 40	7 17	
F	26	4 16	7 36	21 10	3 14	8 27	8 3	24—Q. Vic. born 1819.
S	27	4 15	7 38	21 21	3 8	9 10	8 49	
Su.	28	4 14	7 40	21 30	3 0	9 52	9 30	
M	29	4 13	7 41	21 40	2 53	10 35	10 14	
T	30	4 13	7 41	21 49	2 45	11 20	10 57	25—Ascension Day.
W	31	4 12	7 42	N 21 57	2 36		11 43	

MAY.—May (Latin, *Maius*) is so denominated from Maia, the most beautiful of the constellation Pleiades, and the fabled mother of Mercury, one of the false deities. The corresponding Jewish month was SIVAN (Esth. viii. 9,) the ninth of the civil, and third of the sacred year.

JUNE, 30 DAYS.

MOON'S PHASES.

FIRST QUARTER..... 1st day, 4h, 50m, Morning
 FULL MOON..... 9th day, 6h, 9m, Morning
 LAST QUARTER..... 16th day, 8h, 22m, Morning
 NEW MOON..... 23rd day, 4h, 26m, Morning
 FIRST QUARTER..... 30th day, 10h, 9m, Evening

Day of W.	Day of M.	Sun		G. app. time.		High		Memoranda.
		rises	sets	Sun's Declination.	Equation of time.	Water at St. John's.		
		h. m.	h. m.	o	m. s.	p. m.	a. m.	
Th.	1	4 12	7 43	N 22 6	2 28	0 32	0 8	
F	2	4 12	7 44	22 14	2 18	1 57	1 25	
S	3	4 11	7 45	22 21	2 9	3 3	2 31	George III. born, 1738
Su.	4	4 10	7 45	22 28	1 59	4 4	3 33	Whit Sunday
M	5	4 10	7 46	22 35	1 49	5 4	4 35	15 — Magna Charta signed, 1215.
T	6	4 10	7 47	22 41	1 38	5 55	5 30	
W	7	4 9	7 48	22 47	1 27	6 35	6 15	
Th.	8	4 9	7 48	22 53	1 16	7 17	6 57	Sir Alex. Bannerman arrived, 1857
F	9	4 9	7 49	22 58	1 5	7 56	7 36	Moon rises 56 minutes past 8, evening.
S	10	4 8	7 50	23 3	0 53	8 33	8 16	Moon rises 17 minutes past 10, evening.
Su.	11	4 8	7 51	23 7	0 41	9 12	8 53	Moon rises 22 minutes past 11, evening.
M	12	4 8	7 51	23 11	0 29	9 50	9 31	15—Corpus Christi.
T	13	4 7	7 52	23 14	0 17	10 33	10 11	Moon rises 23 minutes past 0, morning.
Th.	14	4 7	7 52	23 17	0 4	11 20	10 57	Moon rises 34 minutes past 1, morning.
F	15	4 6	7 53	23 20	0 8		11 45	Moon rises 59 minutes past 2, morning.
S	16	4 6	7 53	23 22	0 21	0 39	0 11	Moon rises 52 minutes past 4, morning.
Su.	17	4 6	7 54	23 24	0 34	1 42	1 10	2nd Sun. after Trinity
M	18	4 5	7 54	23 26	0 47	2 53	2 17	24—Midsummer.
T	19	4 6	7 55	23 27	1 0	3 59	3 26	1st Sess. 8th Gen. Ass prorog'd by pro. 1861
W	20	4 7	7 55	23 27	1 13	5 6	4 34	26—Cor. Q. Vict. 1838
Th.	21	4 7	7 55	23 28	1 26	6 5	5 37	29—St. Peter.
Th.	22	4 8	7 56	23 27	1 39	7 0	6 33	
F	23	4 8	7 56	23 27	1 52	7 50	7 24	
S	24	4 9	7 56	23 26	2 5	8 35	8 14	
Su.	25	4 9	7 56	23 24	2 18	9 18	8 58	
M	26	4 10	7 56	23 22	2 31	9 58	9 38	
T	27	4 10	7 56	23 20	2 43	10 36	10 16	
W	28	4 10	7 56	23 18	2 56	11 16	10 56	
Th.	29	4 11	7 56	23 14	3 8	11 57	11 35	
F	30	4 11	7 56	N 23 11	3 20	0 19		

Equation of time to be subtracted from apparent time to the 14th and to be added the remainder of the month.

JUNE.—June, (Latin, *Junius*), was so named from Juno, one of the fabled Goddesses of the Romans. It answers to the Jewish TAMMUZ, the tenth of their civil, and fourth of their sacred year.

FULL M
 LAST Q
 NEW M
 FIRST C

Day of W.	Day of M.
S	1
Su.	2
M	3
T	4
W	5
Th.	6
F	7
S	8
Su.	9
M	10
T	11
W	12
Th.	13
F	14
S	15
Su.	16
M	17
T	18
W	19
Th.	20
F	21
S	22
Su.	23
M	24
T	25
W	26
Th.	27
F	28
S	29
Su.	30
M	31

July
 the fif
 it Juliu
 born in
 eleven
 year.

JULY, 31 DAYS.

MOON'S PHASES.

FULL MOON..... 8th day, 4h, 57m, Evening
 LAST QUARTER..... 15th day, 0h, 55m, Evening
 NEW MOON..... 22nd day, 2h, 58m, Evening
 FIRST QUARTER..... 30th day, 3h, 37m, Evening

Day of W.	Day of M.	Sun		G. app. time.		High Water at			Memoranda.
		rises at St. John's.	Sun sets at St. John's.	Sun's Declination.	Equa. of time. add.	St. John's.			
		h. m.	h. m.	o	h. m.	p. m.	a. m.		
S	1	4 12	7 55	N 23 7	3 31	1 3	0 41	Sir R. Peel died, 1850	
Su.	2	4 13	7 55	23 3	3 43	1 59	1 27	3rd Sun. after Trinity.	
M	3	4 13	7 54	22 58	3 54	3 5	2 33		
T	4	4 14	7 54	22 53	4 5	4 10	3 37	An. Independ. 1776.	
W	5	4 15	7 54	22 47	4 15	5 13	4 43		
Th.	6	4 15	7 53	22 42	4 25	6 5	5 40	Moon rises 58 minutes past 5, evening.	
F	7	4 16	7 53	22 35	4 35	6 50	6 27	Moon rises 35 minutes past 7, evening.	
S	8	4 17	7 53	22 29	4 44	7 33	7 12	Moon rises 53 minutes past 8, evening.	
Su.	9	4 18	7 52	22 22	4 53	8 17	7 55		
M	10	4 19	7 51	22 14	5 2	8 58	8 37		
T	11	4 19	7 51	22 6	5 10	9 37	9 17		
W	12	4 21	7 50	21 58	5 18	10 21	9 59		
Th.	13	4 21	7 50	21 49	5 25	11 6	10 42	Moon rises 27 minutes past 10, evening.	
F	14	4 22	7 49	21 41	5 32	11 56	11 30	Moon rises 33 minutes past 11, evening.	
S	15	4 23	7 48	21 31	5 38	0 22		Moon rises 12 minutes past 0, morning.	
Su.	16	4 24	7 47	21 21	5 44	1 19	0 50	Moon rises 44 minutes past 1, morning.	
M	17	4 25	7 46	21 11	5 49	2 25	1 49	Moon rises 39 minutes past 3 morning.	
T	18	4 26	7 45	21 1	5 54	3 38	3 2	Prince Wales arrives at St. John's 1860.	
W	19	4 27	7 44	20 50	5 58	4 52	4 15		
Th.	20	4 28	7 43	20 39	6 2	5 58	5 25		
F	21	4 29	7 42	20 28	6 5	6 53	6 25		
S	22	4 30	7 41	20 16	6 8	7 39	7 16		
Su.	23	4 32	7 40	20 4	6 10	8 22	8 1		
M	24	4 33	7 39	19 51	6 12	9 0	8 41		
T	25	4 34	7 38	19 38	6 13	9 34	9 17		
W	26	4 35	7 37	19 25	6 13	10 9	9 52	Prince Wales leaves St John's for Sydney, 1860	
Th.	27	4 36	7 36	19 12	6 13	10 42	10 25		
F	28	4 37	7 35	18 58	6 10	11 16	10 59		
S	29	4 38	7 34	18 44	6 10	11 56	11 36	French Revolu., 1830.	
Su.	30	4 39	7 32	18 29	6 8	0 17		Ig. Loyola died, 1556	
M	31	4 41	7 31	N 18 15	6 6	1 0	0 37		

July—July (Latin, *Julius*.) was originally called Quintilis, being the fifth month of the Roman calendar. Marc Antony designated it Julius, in honor of Caius Julius Cæsar, dictator of Rome, who was born in it, and who reformed the calendar. It answers to AB, the eleventh month of the Jewish civil year, and the fifth of their sacred year.

AUGUST, 31 DAYS.

MOON'S PHASES.

FULL MOON 7th day, 1h, 58m, Morning
 LAST QUARTER..... 13th day, 6h, 11m, Evening
 NEW MOON..... 21st day, 3h, 46m, Morning
 FIRST QUARTER..... 29th day, 8h, 15m, Morning

Day of W.	Day of M.	Sun		G. app. time.		High		Memoranda.
		rises	sets	Sun's Declination.	Equa. of time. add.	Water at St. John's.		
		h. m.	h. m.	o	m. s.	p. m.	m.	
T	1	4 42	7 29	N 18 0	6 2	2 1	1 29	Emancipa. of Slaves
W	2	4 44	7 28	17 44	5 58	3 14	2 37	in W. Indies, 1834
Th.	3	4 45	7 27	17 29	5 54	4 28	3 51	
F	4	4 46	7 25	17 13	5 49	5 38	5 5	[laid, 1858.
S	5	4 48	7 24	16 57	5 43	6 30	6 6	Atlantic Tel. Cable
SU.	6	4 49	7 22	16 40	5 36	7 14	6 53	Prince Alfred b. 1844.
M	7	4 50	7 21	16 23	5 29	7 57	7 36	
T	8	4 51	7 19	16 6	5 22	8 39	8 18	Moon rises 1 minute
W	9	4 53	7 18	15 49	5 14	9 22	9 1	past 8, evening.
Th.	10	4 54	7 16	15 32	5 5	10 2	9 42	Moon rises 6 minutes
F	11	4 55	7 15	15 14	4 55	10 45	10 23	past 9, evening.
S	12	4 57	7 13	14 56	4 46	11 32	11 8	Moon rises 15 minutes
SU.	13	4 58	7 11	14 38	4 35		11 55	past 10 evening.
M	14	4 59	7 9	14 19	4 24	0 49	0 22	Moon rises 44 minutes
T	15	5 1	7 8	14 1	4 13	1 56	1 21	past 11, evening.
W	16	5 2	7 6	13 42	4 1	3 19	2 36	Moon rises 34 minutes
Th.	17	5 3	7 4	13 23	3 49	4 42	4 1	past 0, morning.
F	18	5 5	7 3	13 3	3 36	5 46	5 19	Moon rises 30 minutes
S	19	5 6	7 1	12 44	3 22	6 41	6 15	past 2, morning.
SU.	20	5 7	6 59	12 24	3 8	7 25	7 4	Moon rises 38 minutes
M	21	5 9	6 57	12 4	2 54	8 4	7 45	past 4, morning.
T	22	5 10	6 55	11 44	2 39	8 37	8 20	Moon rises 41 minutes
W	23	5 11	6 54	11 24	2 24	9 9	8 53	past 6, morning.
Th.	24	5 13	6 52	11 3	2 8	9 41	9 25	22—Found. Stone St.
F	25	5 14	6 50	10 42	1 52	10 12	9 56	John's Wes. Church
S	26	5 15	6 48	10 22	1 36	10 44	10 29	laid, 1856.
SU.	27	5 17	6 46	10 1	1 19	11 16	11 0	26—Birth Prince Con-
M	28	5 18	6 44	9 39	1 1	11 56	11 35	sort, 1819.
T	29	5 19	6 42	9 18	0 44	0 18		
W	30	5 21	6 40	8 57	0 26	1 11	0 42	
Th.	31	5 22	6 38	N 8 35	0 7	2 28	1 47	J. Bunyan died, 1688.

AUGUST.—August was originally called by the Romans, *Sextilis*, or the sixth month; which was afterwards, by the senate, changed to *Augustus*, in honour of the Emperor. It corresponds to the Jewish ELUL (Neh. vi. 15), their twelfth civil, or sixth sacred month.

FULL
LAST
NEW
FIRST

Day of W.

F
S
SU.
M
T
W
Th.
F
S
SU.
M
T
W
Th.
F
S
SU.
M
T
W
Th.
F
S
SU.
M
T
W
Th.
F
S

SER
enth
tema,
signif
month

SEPTEMBER, 30 DAYS.

MOON'S PHASES.

FULL MOON.....	5th day, 10h, 21m, Morning
LAST QUARTER.....	12th day, 1h, 26m, Morning
NEW MOON.....	19th day, 7h, 14m, Evening
FIRST QUARTER.....	27th day, 11h, 15m, Evening

Day of W.	Day of M.	Sun		G. app. time.		High		Memoranda.
		rises at St. John's.	sets at St. John's.	Sun's Declination.	Equation of time.	Water at St. John's.		
		h. m.	h. m.	o	m. s.	p. m.	a. m.	
F	1	5 23	6 36	N 8 31	0 11	3 49	3 9	8—Sir A. Bannerman
S	2	5 25	6 35	7 51	0 30	5 3	4 28	left—Hon. L. O'Brien
Su.	3	5 26	6 33	7 29	0 50	6 1	5 33	sworn in Administrator.
T	4	5 27	6 31	7 7	1 9	6 51	6 28	
W	5	5 29	6 28	6 45	1 29	7 34	7 13	Moon rises 33 minutes
Th.	6	5 30	6 26	6 23	1 49	8 16	7 56	past 6, evening.
F	7	5 31	6 24	6 0	2 9	9 0	8 38	Moon rises 33 minutes
S	8	5 33	6 23	5 38	2 30	9 42	9 20	past 7, evening.
Su.	9	5 34	6 21	5 15	2 50	10 25	10 2	Moon rises 57 minutes
M	10	5 35	6 19	4 52	3 11	11 11	10 47	past 8, evening.
T	11	5 37	6 16	4 29	3 32		11 34	Moon rises 34 minutes
W	12	5 38	6 14	4 7	3 53	0 27	0 2	past 10, evening.
Th.	13	5 39	6 13	3 44	4 14	1 37	1 1	
F	14	5 41	6 10	3 21	4 35	3 0	2 18	Moon rises 29 minutes
S	15	5 42	6 8	2 57	4 56	4 26	3 44	past 0, morning.
Su.	16	5 43	6 6	2 34	5 17	5 31	5 3	Moon rises 31 minutes
M	17	5 45	6 4	2 11	5 38	6 22	5 58	past 2, morning.
T	18	5 46	6 2	1 48	5 59	7 3	6 44	Moon rises 33 minutes
W	19	5 47	6 0	1 24	6 20	7 38	7 21	past 4, morning.
Th.	20	5 49	5 58	1 1	6 41	8 9	7 54	Moon rises 29 minutes
F	21	5 50	5 56	0 38	7 2	8 40	8 24	past 6, morning.
S	22	5 51	5 54	N 0 14	7 23	9 10	8 56	21—St John's Cathedral
Su.	23	5 52	5 53	S 0 9	7 44	9 42	9 26	consecrated, 1859
M	24	5 54	5 50	0 33	8 4	10 12	9 57	
T	25	5 56	5 48	0 56	8 25	10 45	10 28	
W	26	5 57	5 46	1 19	8 45	11 22	11 3	St. Cyprian
Th.	27	5 52	5 44	1 43	9 5		11 45	
F	28	6 0	5 42	2 6	9 25	0 36	0 8	[Kara, 1856
S	29	6 1	5 40	2 30	9 45	1 49	1 9	St. Michael—Battle of
	30	6 2	5 38	S 2 53	10 4	3 15	2 32	Whitefield died, 1776

SEPTEMBER.—September, now the ninth, was anciently the seventh month, as is indicated by its name, which is derived from *septem*, signifying "seven;" *ember*, or *timber*, is from the Latin, and signifies "showers," as frequently the rainy season begins this month.

OCTOBER, 31 DAYS.

MOON'S PHASES.

FULL MOON..... 4th day, 7h, 0m, Evening
 LAST QUARTER..... 11th day, 11h, 15m, Morning
 NEW MOON..... 19th day, 0h, 56m, Evening
 FIRST QUARTER..... 27th day, 0h, 18m, Evening

Day of W.	Day of M.	Sun		G. app. time.		High		Memoranda.
		rises	sets	Sun's Declination.	Equa. of time. add.	Water at St. John's.		
		h. m.	h. m.	o	m. s.	p. m.	a. m.	
Su.	1	6 4	5 36	3 16	10 23	4 33	3 55	3 - Governor Musgrave arrived.
M	2	6 5	5 39	3 40	10 42	5 35	5 8	
T	3	6 6	5 31	4 3	11 1	6 22	5 59	5 - Sworn into office.
W	4	6 8	5 27	4 26	11 19	7 8	6 46	
Th.	5	6 9	5 23	4 49	11 37	7 51	7 30	Moon rises 9 minutes past 6, evening.
F.	6	6 11	5 25	5 12	11 55	8 35	8 13	Moon rises 35 minutes past 7, evening.
S.	7	6 12	5 23	5 35	12 12	9 21	8 58	Moon rises 21 minutes past 9, evening.
Su.	8	6 14	5 22	5 58	12 29	10 6	9 43	Moon rises 22 minutes past 11, evening.
M	9	6 15	5 20	6 21	12 45	10 52	10 28	Moon rises 23 minutes past 0, morning.
T	10	6 17	5 18	6 44	13 1	11 42	11 16	Moon rises 25 minutes past 2, morning.
W	11	6 18	5 16	7 7	13 16	0 9		Moon rises 26 minutes past 4, morning.
Th.	12	6 20	5 14	7 29	13 31	1 14	0 38	Moon rises 25 minutes past 6, morning.
F.	13	6 21	5 12	7 52	13 45	2 36	1 52	Battle of Trafalgar, 1805.
S.	14	6 22	5 10	8 14	13 59	3 57	3 17	11 - Steam Com. established in Conception Bay, 1852.
Su.	15	6 24	5 8	8 36	14 12	5 5	4 34	19 - Free Trade Act received Royal assent, 1855.
M	16	6 25	5 6	8 59	14 25	5 55	5 33	St. Simon and St. Jude.
T	17	6 27	5 1	9 21	14 37	6 36	6 15	
W	18	6 28	5 2	9 42	14 48	7 11	6 54	
Th.	19	6 30	5 0	10 4	14 59	7 42	7 25	
F.	20	6 31	4 58	10 26	15 9	8 13	7 58	
S.	21	6 33	4 57	10 47	15 19	8 43	8 29	
Su.	22	6 34	4 55	11 9	15 28	9 16	9 1	
M	23	6 36	4 53	11 30	15 36	9 46	9 31	
T	24	6 37	4 51	11 51	15 43	10 20	10 2	
W	25	6 39	4 50	12 11	15 50	10 58	10 38	
Th.	26	6 40	4 48	12 32	15 56	11 44	11 19	
F.	27	6 42	4 46	12 52	16 2	0 10		
S.	28	6 43	4 45	13 13	16 6	1 17	0 41	
Su.	29	6 45	4 43	13 33	16 10	2 49	1 57	
M	30	6 46	4 41	13 52	16 13	3 58	3 21	
T	31	6 48	4 40	14 12	16 16	5 3	4 34	Hallow Eve.

OCTOBER.—October derives its name from the Latin word *octo*, "eight," indicating the place it held in the Roman calendar, and *ber*, or "showe." To the Jews it was known as *BUL*, signifying decay, as in the fall of the leaf (1 Kings vi. 38.) or *MARCHESVAN*, as it was called after the captivity.

FULL
LAST
NEW
FIRST

Day of W
Day of M

W
Th.
F
S
Su.
M
T
W
Th.
F
S
Su.
M
T
W
Th.
F
S
Su.
M
T
W
Th.
F
S
Su.
M
T
W
Th.

N
it be
the
mon

NOVEMBER. 30 DAYS.

MOON'S PHASES.

FULL MOON..... 3d day, 4h, 32m, Morning
 LAST QUARTER..... 10th day, 2h, 14m, Morning
 NEW MOON..... 18th day, 7h, 28m, Morning
 FIRST QUARTER..... 25th day, 11h, 28m, Evening

Day of W	Day of M.	Sun		G. app. time.		High.		Memoranda.
		rises at St John's.	Sun sets h. m.	Sun's Declination.	Equation of time.	Water at St. John's.		
		h. m.	h. m.	o	m. s.	p. m.	a. m.	
W	1	6 49	4 38	14 31	16 17	5 56	5 30	All Saints
Th.	2	6 51	4 36	14 50	16 18	6 43	6 20	3 - Free St. Andrew's
F	3	6 53	4 35	15 9	16 18	7 30	7 7	Church opened, 1853
S	4	6 54	4 33	15 28	16 17	8 17	7 53	Moon rises 9 minutes
Su.	5	6 56	4 32	15 46	16 16	9 1	8 39	past 6, evening.
M	6	6 57	4 30	16 4	16 13	9 48	9 24	Moon rises 4 minutes
T	7	6 59	4 29	16 22	16 10	10 36	10 11	past 8, evening
W	8	7 0	4 27	16 39	16 6	11 25	10 59	Moon rises 14 minutes
Th.	9	7 2	4 26	16 57	16 1		11 49	past 10, evening.
F	10	7 3	4 25	17 14	15 55	0 47	0 16	
S	11	7 5	4 24	17 30	15 48	1 53	1 21	Moon rises 19 minutes
Su.	12	7 6	4 22	17 47	15 40	3 9	2 33	past 0, morning
M	13	7 8	4 21	18 3	15 32	4 19	3 34	Moon rises 17 minutes
T	14	7 10	4 20	18 19	15 23	5 16	4 43	past 2 morning
W	15	7 11	4 19	18 34	15 12	6 2	5 41	Moon rises 17 minutes
Th.	16	7 12	4 18	18 49	15 1	6 43	6 22	past 4, morning
F	17	7 14	4 16	19 4	14 49	7 17	7 0	Moon rises 13 minutes
S	18	7 15	4 15	19 18	14 37	7 49	7 32	past 6, morning
Su.	19	7 17	4 14	19 32	14 23	8 21	8 5	Duke of Wellington's
M	20	7 18	4 13	19 46	14 9	8 53	8 37	Funeral, 1852
T	21	7 20	4 12	19 59	13 53	9 28	9 11	Princess Royal born,
W	22	7 21	4 11	20 12	13 37	10 3	9 44	1840
Th.	23	7 23	4 11	20 25	13 21	10 44	10 22	
F	24	7 24	4 10	20 37	13 3	11 29	11 5	Peace with U.S., 1814
S	25	7 26	4 9	20 49	12 45		11 54	
Su.	26	7 27	4 8	21 1	12 26	0 52	0 22	Kars capitulated, 1855
M	27	7 28	4 7	21 12	12 6	2 3	1 26	
T	28	7 30	4 7	21 22	11 46	3 18	2 41	[1857
W	29	7 31	4 6	21 33	11 25	4 28	3 55	Wes. Church opened,
Th.	30	7 32	4 6	21 42	11 3	5 28	5 0	St. Andrew

NOVEMBER.—November is so named from the Latin *novem* "nine," it being the ninth month of the Roman calendar. It corresponds to the Jewish *Chislew* (Neh. i. 1), which signifies *chilled*, the third month of their civil, and ninth of their sacred year.

DECEMBER, 31 DAYS.

MOON'S PHASES.

FULL MOON 2nd day, 3h, 13m, Evening
 LAST QUARTER 9th day, 8h, 42m, Evening
 NEW MOON 18th day, 1h, 14m, Morning
 FIRST QUARTER 25th day, 9h, 0m, Morning

Day of W.	Day of M.	Sun		G. app. time.		High		Memoranda.
		rises at St. John's.	Sun sets at St. John's.	Sun's Declination.	Equa- of time.	Water at St. John's.	Water at St. John's.	
		h. m.	h. m.	o	m. s.	p. m.	a.m.6	
F	1	7 33	4 5	S 21 52	10 40	6 24	5 59	3—St. Andrew's Kirk opened, 1843
S	2	7 35	4 5	22 1	10 17	7 13	6 47	
SU.	3	7 36	4 4	22 9	9 54	8 2	7 36	Moon rises 47 minutes past 5, evening
M	4	7 37	4 4	22 18	9 29	8 49	8 22	
T	5	7 38	4 3	22 25	9 5	9 34	9 17	Moon rises 54 minutes past 7, evening
W	6	7 39	4 3	22 33	8 39	10 18	9 50	
Th.	7	7 40	4 3	22 40	8 13	11 2	10 45	Moon rises 3 minutes past 10, evening
F	8	7 42	4 3	22 46	7 47	11 49	11 2	
S	9	7 43	4 3	22 52	7 20	0 13		
SU.	10	7 44	4 3	22 57	6 53	1 4	0 38	Moon rises 19 minutes past 0, morning.
M	11	7 44	4 3	23 2	6 25	2 8	1 34	
T	12	7 45	4 3	23 7	5 57	3 17	2 42	Moon rises 6 minutes past 2, morning
W	13	7 46	4 3	23 11	5 29	4 23	3 50	
Th.	14	7 47	4 3	23 15	4 60	5 19	4 52	Moon rises 5 minutes past 4, morning
F	15	7 48	4 3	23 18	4 31	6 8	5 45	
S	16	7 49	4 3	23 21	4 1	6 48	6 28	Moon rises 2 minutes past 6, morning
SU.	17	7 49	4 4	23 23	3 32	7 27	7 7	
M	18	7 50	4 4	23 25	3 2	8 3	7 44	
T	19	7 51	4 4	23 26	2 32	8 39	8 21	Napoleon III. procl'd Emperor, 1848
W	20	7 51	4 5	23 27	2 2	9 14	8 56	
Th.	21	7 52	4 5	23 28	1 32	9 53	9 33	St. Thomas
F	22	7 52	4 6	23 28	1 2	10 34	10 13	9—Sons of Tem. or- ganiz'd in St. John's, 1850.
S	23	7 53	4 6	23 27	0 32	11 18	10 55	
SU.	24	7 53	4 7	23 26	0 2		11 40	
M	25	7 53	4 7	23 24	0 28	0 31	0 5	CHRISTMAS DAY
T	26	7 54	4 8	23 22	0 58	1 30	0 59	St. Stephen
W	27	7 54	4 9	23 20	1 28	2 42	2 5	St. John
Th.	28	7 54	4 9	23 17	1 57	3 57	3 19	Innocents' Day
F	29	7 54	4 10	23 14	2 28	5 7	4 33	16—C. Wesley born, 1708.
S	30	7 55	4 11	23 10	2 55	6 7	5 38	
SU.	31	7 55	4 12	S 23 6	3 24	7 1	6 34	

Equation of time to be subtracted from apparent time to the 24th, and to be added the remainder of the month.

DECEMBER.—December derives its name from the Latin *decem*, "ten;" as, in the Roman year, instituted by Romulus, beginning with March, it was the tenth month.



COLONY OF NEWFOUNDLAND.

Governor, Commander-in-Chief, and Vice-Admiral—
HIS EXCELLENCY ANTHONY MUSGRAVE, ESQUIRE.

*Private Secretary—*James Sheriff Musgrave, Esquire.

*Colonial Aide-de-Camp—*Edward L. Jarvis, Esquire.

The Executive Council.

Hon. Laurence O'Brien—*President in the absence of the Governor.*

Hon. Hugh W. Hoyles—*Attorney General.*

Hon. Robert Carter, R.N.—*Acting Colonial Secretary.*

Hon. Nicholas Stabb.

Hon. John Bemister—*Receiver General.*

*Acting Clerk of the Council—*Hon. Robert Carter, R.N.

The Legislative Council.

Hon. Laurence O'Brien, *President, St. John's.*

Hon. John Rochfort, M.D.. do

Hon. Edward Morris, do

Hon. Nicholas Stabb, do

Hon. Robert J. Pinsent, do

Hon. Robert Kent, do

Hon. James S. Clift, do

Hon. Richard O'Dwyer, do

Hon. Edward White, do

Hon. Peter G. Tessier, do

Hon. James Cormack, do

Hon. James O. Fraser, do

*Master-in-Chancery and Clerk—*Hon. George H. Emerson, holding, by Her Majesty's patent, the rank and precedence of an Executive Councillor; *Usher of the Black Rod—*William F. Rennie; *Door Keeper—*James Walsh; *Assistant Door Keepers and Messengers—*James Corcoran and Ambrose Ronayne.

House of Assembly.

*Speaker—*FREDERICK B. T. CARTER, Esquire.

*District of St. John's East—*John Kent, Robert John Parsons, and John Kavanagh, Esquires.

*District of St. John's West—*John Casey, Thomas Talbot, and Henry Renouf, Esquires.

District of Harbor Grace—John Hayward, and Henry T. Moore, Esquires.

District of Carbonear—John Rorke, Esquire.

District of Harbor Maine—Patrick Nowlan, and Thomas Byrne, Esquires.

District of Port-de-Grave—John Leamon, Esquire.

District of Bay-de-Verds—Hon. John Bemister.

District of Trinity—Stephen Rendell, John Winter, and Frederick B. T. Carter, Esquires.

District of Bonavista—John H. Warren, Stephen March, and Frederick J. Wyatt, Esquires.

District of Twillingate and Fogo—William V. Whiteway, and Thomas Knight, Esquires.

District of Ferryland—Thomas Glen, and Edward D. Shea, Esqrs.

District of Placentia and St. Mary's—Ambrose Shea, Richard McGrath, and Pierce M. Baron, Esquires.

District of Burin—Hon. Hugh W. Hoyles, and Edward Evans, Esquire.

District of Fortune Bay—Hon. Robert Carter, R.N.

District of Burgeo and LaPoile—Daniel Woodley Prowse, Esq.

Clerk—John Stuart; Clerk Assistant—Richard Holden; Solicitor—Thomas J. Kough; Sergeant-at-Arms—Hugh J. Furneaux; Librarian—Mrs. Feehan; Door Keeper—William Coady (Acting); Messenger—Edward Kennedy; Under Door Keepers—Philip Brown, William Doyle; Assistant Messenger—Peter Higgins; Fireman—John Higgins.

Colonial Secretary's Office.

Acting Colonial Secretary—Hon. Robert Carter, R.N.; First Clerk—Joseph Crowdy; Second Clerk—Michael A. Kent; Office Keeper and Messenger—James Dunphy.

Surveyor General's Office.

Surveyor General—John H. Warren, Esq.; Deputy Surveyor—Edward M: J. Delaney, C.E.; Chainman—Richard Ryan.

DEPUTY SURVEYORS IN OUTPORTS.

Northern District— — — —, Carbonear; Patrick Brine, Brigus; Benjamin Sweetland, Trinity; John T. Oakley, Greenspond; — — — —, Bonavista; — — — —, King's Cove; G. W. Hierliby, Harbor Grace; Wm. Swansborough, New Perlican, (Trinity Bay South); William Christian, Bay-de-Verde; James Peyton, Twillingate.

Southern District—Thomas Mockler, Bay Bulls; Michael Kelly, Ferryland; John W. English, St. Mary's and Placentia; Henry Camp, Fortune Bay; James Harney, Burin; Thomas Winter, Fortune Bay; Josiah J. Blackburn, Grand Bank.

Presi
O'Brien
Kent, a

Rece
Canning
Landing
Clerk a
James
Locker-
Auth

Fogo
Robert
—; C
John C
ning.
shaw.

Green
fen. F
Mary's,
Josiah
McGrat
Basque
Harbor
Hierlib
bor, Ja
tia, Wi

Comp
L. Mod

Rece
LABE
Colle
subject
Sec. 10

Ship

Acti

Revenue Establishment.

BOARD OF REVENUE.

President—Hon. John Bemister, Receiver General; Hon. Laurence O'Brien, Stephen Rendell, Esq., Hon. Nicholas Stabb, Hon. R. Kent, and Ewen Stabb, Esq.

REVENUE ESTABLISHMENT.

Receiver General—Hon. J. Bemister. Assistant Collector—John Canning, Esq. Landing and Tide Surveyor—James S. Hayward. Landing Waiters—Edward L. Moore, Thomas E. Gaden. First Clerk and Warehouse Keeper—William Doughtney. Second Clerk—James Winter. Third Clerk—William Gill. Fourth Clerk and Locker—William Reddin. Locker—John Hickey.

Authorized Broker—Joseph R. Mullings.

OUTPORT SUB-COLLECTORS.

Fogo, John G. Lucas. Greenspond, William Larg. Trinity, Robert Bayly. Carbonear, John McCarthy. Harbor Grace, ———; Clerk and Landing Waiter, Johnstone F. Burrows. Brigus, John C. Nuttall. Burin, Thomas Winter. Lamaline, Henry Benning. Harbor Breton, Thomas Birkett. Gaultois, Richard Bradshaw. LaPoile, Thomas Read. Twillingate, Joseph J. Pearce.

PREVENTIVE OFFICERS.

Green Bay (North Side), Patrick Power. Bonavista, John Miffen. Bay Bulls, John L. McKie. Ferryland, Luke Brown. St. Mary's, James Murphy. Trepassay, John Devereux. Grand Bank, Josiah Blackburn. Fortune, Thomas Rogers. LaManche, Richard McGrath. Little Placentia, Thomas Freeman. Channel (Port-aux-Basque,) Horatio H. Read. St. Lawrence, Hugh Vavasor. English Harbor, (Fortune Bay,) Albert Sterling. Bay Roberts, George W. Hierlihy. Pushthrough, (Fortune Bay,) Henry Camp. Hants Harbor, James L. Mews. Burgeo, Francis A. Parsons. Great Placentia, William G. Bradshaw.

CUSTOMS DEPARTMENT.

Comptroller—Hon. J. Bemister. Surveyor of Shipping—Edward L. Moore, St. John's.

TREASURY DEPARTMENT.

Receiver General—Hon. J. Bemister. Clerk—Geo. F. Hayward.

LABRADOR—*Collection of Duties under Act 26 Vic., Cap. 1 and 2.*

Collector, James Winter, (Sub-Collectors appointed by Collector, subject to control of Governor in Council, under Act 26 Vic., Cap. 2, Sec. 10.)

Shipping Master and Emigrant Agent—James Finlay.

Financial Secretary's Office.

Acting Financial Secretary—Richard Howley, Esquire.

Board of Works.

For the management and superintendence of Government House, Colonial Building, Court Houses, Gaols, Custom Houses, Hospitals, Lunatic Asylum, and all other Buildings and Property belonging to the Colony; Light Houses, Buoys, and Beacons erected or to be erected within the Colony and its dependencies; supervision of Commissioners of Roads, Highways, Bridges, &c., &c.

Chairman—John H. Warren, Esquire; John Kavanagh, Thomas S. Dwyer, Terence Hallern, Stephen Rendell, James B. Wood, and William Boyd, Esquires.

Secretary—John Stuart. Superintendent of Public Works and Buildings—John T. Nevill. Road Surveyors and Inspectors—Thomas Byrne and John Maher.

OUTPORT BOARDS OF ROAD COMMISSIONERS.

Brigus to Port-de-Grave, both places inclusive—John Leamon, James Tarrahan, Rev. E. O'Keefe, John Wilcox, Philip Bennett, Thomas Butler, and John Bartlett.

Port-de-Grave, Northern side of Northern Gut Bridge—Doctor Brown, Thomas Butler, — Kenny, James Keeping, Samuel Daw, jr., (Ship Cove) John Butler, (Sand.)

Bay Roberts—W. S. Green, Richard Cormack, Isaac Bartlett, John McStravic, Robert Daw.

Upper Island Cove, Bishop's Cove, and Bryant's Cove—James Crane, Joseph Drover, jr., James Drover, (Island Cove) John Barrett, Israel Gosse, (Bishop's Cove) Thomas Stevenson, (Bryant's Cove.)

Carbonear—John Ronke, John McCarthy, Michael Bolger, Michael Gould, John F. Apsey, Nicholas Nicholle, Benjamin T. Gould.

Bay-de-Verds (Upper Division) from Fresh Water to Northern Bay, exclusive—Rev. John S. Peach, Wm. Joice, Wm. Butt, Pierce Hanrahan.

Bay-de-Verds, (Lower Division) from Northern Bay (inclusive) to Grates Cove—John Lewis, Rev. Bernard Duffy, Rev. Oliver Rouse, and Josiah Garland.

Trinity (North Side) to Ragged Harbor—Benjamin Sweetland, Robert Bayly, Alexander W. Bremner, Gilbert H. Cole, Patrick Murphy.

Trinity (South Side) from Grates Cove to Hant's Harbor—James L. Mews, John Sheehan, Thomas Cooper, Jabez Tilley, William Meadows, William March.

New Harbor—Charles Newhook, William Miller, Joseph Pretty, Edgar March, — Smith (Chance Cove)

Hant's Harbor (to the head of the Bay)—Rev. George Gardner, Reuben Bemister, Michael Howley, William Sooley, and Elias Warren.

Ragged Harbor to Bird Island—Alexander Bremner, William Ashford, William Walsh, Robert Tilley, John Cameron, John Jeynes, Benjamin Snelgrove.

Bonavista—Alexander Bremner, John G. Skelton, James Saint, Peter Ward, John Lawrence, Patrick Keough, and William Brown.

King's Cove—Michael Murphy, David Candow, jr., George Brown, Rev. M. Scanlan, and James Brown, sr.

Keels and Tickle Cove—David Candow, James Eagan, (Keels) Andrew Mullooney, William Penny.

Salvage—E. Kelligrew, Thomas Oldford, Henry Wills, (Salvage) James Bendon, James Pike (Flat Island.)

Greenspond—George Skelton, M.D., James L. Noonan, John T. Oakley, William Lang, Michael Curran, William Tough, (Pinchard's Island) and Darius Blandford.

Twillingate—John Peyton, Joseph J. Pearce, Charles Edmond, Joseph Minty, Thomas Manuel.

Fogo—Hay Findlater, M.D., Richard Power, Thomas Humphrey, John Barks, and Walter Williams.

Tilton Harbor—Rev. Patrick Ward, William Burke, John Brine, John Dwyer, William Greene.

Moreton's Harbor and Tizzard's Harbor—William Osmond, John Forward, (Tizzard's Harbor,) Henry Knight, John Taylor, John Cantwell, (Moreton's Harbor.)

Burnt Island, Exploits—William Menchinton, Edward Dowton, Thomas Butt, William Sevin, Andrew Pearce, and Josiah Manuel.

Fortune Harbor—James Hamilton, Michael Bryan, Michael Byrne, Matthias Glaveen, Patrick Carroll, William Carroll, (Indian Cove,) James Lyver, (Waldron's Cove.)

Jackett's Arm, to Head of the Bay—John Knight, J. Campbell, and John Rowsell.

Shoe Cove to Nipper's Harbor—James Gray, John Stark, William Noble, and John Walshman.

Leading Tickle.—James Alcock, Edward Butler, William Rowsell.

Ferryland and Fernews—Rev. James Murphy, Edmund Hanrahan, William Carter, (Ferryland,) Richard Cashin, (Cape Broyle,) William Johnston, (Renews.)

Bay Bulls to the Goulds—Martin Williams, Martin Driscoll, Thomas Mockler, Cornelius O'Brien, Dr. McKie, and Very Rev. P. Cleary.

Placentia and St. Mary's—Francis L. Bradshaw, Rev. Edward Condon, and Thomas Freeman, Thomas Keites.

Sound Island, (Placentia Bay)—James Hollett, Philip Brown.

Burin—Francis Berteau, Owen Pine, George Bishop, Michael Gorman, James Galton, William Burfitt.

Lamaline—Robert Bonnell, John Pitman, John Collins, George Cake, George Butt:

Grand Bank—Edward Evans, Jonathan Snook, George Lake, and William Burfitt.

Harbor Breton—Samuel Howe, Clement Mallett, Thomas Birkett, Philip Hubert, James Hardy.

Belloram—Rev. John Marshall, John Cluett, John Grandy, Patrick Rose, Thomas Rose.

English Harbor—T. R. Bennett, — Hall, — Fiander, T. Evans.

Gaultois—Rev. E. Colley, John Lee, Richard Bradshaw, H. Shephard, William T. Gallop.

Rose Blanche and Harbor LeCou—Philip Sorsahel, John Hanhan, Meshech Parsons, Thomas Ridout, sr., George Thomas.

Burgeo—Rev. John Cunningham, William Anderson, Stephen Vatcher, Walter Ford, and George Hunt, M.D.

La Poile—Thomas Read, Rev. G. Hooper, Philip Clements, William Thomas, Frederic Cox.

Channel (Port aux Basques)—Rev. W. W. Le Gallais, Rev. James Howie, John Gilman, John Bragg, William Gillman, John G. Brock.

GAOLS.

St. John's (Penitentiary)—Keeper, Richard Brace; Turnkey, Samuel Shaw; Surgeon, Charles Crowdy, M.D.

Harbour Grace—Gaoler, David Rogers; Surgeon, William Dow, M.D.

Trinity—Gaoler, Charles Granger.

Ferryland—Gaoler, Francis Geary.

Placentia—Gaoler, Samuel Collins.

Burin—Gaoler, John Murphy.

Bonavista—Gaoler, Michael Fennell.

Twillingate and Fogo—Gaoler, James Rice.

Harbor Breton—Gaoler, John Garvey.

Brigus and Port-de-Grace—Gaoler, James Butler.

COURT HOUSES.

St. John's—Keeper, John R. Jeans.

Harbour Grace—Keeper, David Rogers.

Ferryland—Keeper, Francis Geary.

ST. JOHN'S HOSPITAL.

Medical Attendants—Hon. John Rochfort, M.D., and Thomas McKen, M.D.; Matron—Mrs. R. Holden; Keeper—John Prowse.

ST. JOHN'S POOR HOUSE.

Medical Attendants—Hospital Doctors; Keeper—John Downey; Assistant Keeper—Joseph Score.

LUNATIC ASYLUM, (ST. JOHN'S.)

Resident Physician—Henry H. Stabb, M.D.

DISTRICT SURGEONS.

St. John's. (Eastern Ward)—Charles Crowdy, M.D., Charles H. Renouf, M.D. (Western Ward)—Frederick Bunting, M.D., James N. Fraser, M.D.

Conception Bay—William Dow, M.D.

COLONIAL BUILDING AND GROUNDS.

Keeper—Mrs. Born.

COMMISSIONERS FOR ERECTION OF PUBLIC WHARF.

Catalina—William Walsh, James Murphy, John Diamond, John Feynes.

COMMISSIONERS FOR ERECTION OF BREAKWATERS.

Fortune—George Lake, sr., Elias Major, John Lake, John Spence, sr., Thomas Rogers, sr., John Forsey, sr., and Edward Bennett.

Grand Bank—Robert Forsey, William Burfit, Henry Hickman, Wilson Lovell, Henry Nicholle, George Tibbo, George Forsey.

Light Houses.

Fort Amherst Light at the entrance of St. John's—A Light was first established at this station in 1813; in 1850 a new House, Lantern and Apparatus were erected. The Light burns at an elevation of 114 feet, is produced by a treble argand burner placed in the focus of an annular lens of the fourth order, and in favorable weather can be seen 16 nautical miles. When Cape Spear is enveloped in fog a heavy piece of ordnance is also discharged at this Fort every hour during day light, to assist vessels in making the harbor. It is situated in lat. 47.33.54 N., and long. 52.40.18 W. John Sheppard, Keeper; Austin Sheppard, Assistant.

Cape Spear Light—This Light was first exhibited on the 1st September, 1835; it is produced by seven argand burners and silvered reflectors burning at an elevation of 264 feet—it revolves, shewing a bright Light, every minute, and in favourable weather can be seen 26 nautical miles. It is situated in 47.31.11 N. lat., and 52.36.59 W. longitude. James Cantwell, Keeper; Denis Cantwell, Assistant.

Harbor Grace Island Light—First exhibited on the 21st November, 1836; it is a Fixed Light, has fifteen argand burners and reflectors, shewing a steady bright Light from N. to S. W. and by W. seaward, elevated above the level of the sea 151 feet, and can be seen in fair weather in rounding Cape St. Francis or crossing Conception Bay, on the intervening space between N. and S. W. and by W. 20 nautical miles; on the land-side the light is more feeble. It is situated in lat. 47.42.45 N., and long. 53.8.15. Austin Oke, Keeper; Charles Snow, Assistant.

Cape Bonavista Light.—Situated in lat. 48.41.56 N., long. 53.5.20 W.; is a Revolving Light, shewing alternately every 90 seconds a white and red Light. It is produced by sixteen argand burners and reflectors, burns at an elevation above the sea of 150 feet, and in favourable weather can be seen 18 nautical miles. By keeping this Light open with Cape Largent, it will carry you clear of the Flower Rocks; first exhibited 11th September, 1843. Jeremiah White, Keeper; Nicholas White, Assistant.

Cape Pine Light—This Tower is of iron, built by the Imperial Government in 1849-50, and first put in requisition on the 1st January, 1851. It is revolving, and shews a brisk flash every thirty seconds—has 12 argand burners and reflectors—elevated above the level of the sea 314 feet—situated in lat. 46.37.4 N., and in long. 53.31.45 W. In a favourable state of the atmosphere it can be seen 26 nautical miles. Henry Herder, Keeper; Samuel Austin, Assistant.

Harbor Grace Beach Beacon and Light—First exhibited 11th

September, 1850; stands on the Point of Beach at the entrance of Harbour Grace. It is a double Light, as a distinction from Harbor Grace Island Light, one being placed above the other, preserving that appearance for six miles; exceeding this distance up to ten miles the two Lights appear blended into one. In sailing into Harbour Grace with a fair or leading wind, bring the Beach Beacon to bear W. or W. by S., and by keeping the Light or building a little on the starboard bow it will carry you clear of the Bar, on which at low water there is not more than 8 feet of water. It is situated in lat. 47.41.28 N., and in long. 53.12.33 W.; elevation above the sea level 40 feet; in clear weather it may be seen at a distance of 11 nautical miles. George Brown, Keeper.

Green Island Light, at the entrance of Catalina Harbour, Trinity Bay—Situated in lat. 48.30.16 N., long. 53.2.40 W. This is a fixed white Light, burns at an elevation of 92 feet above high water, and in favourable weather will be seen from E.N.E., seaward, to S.W., 15 nautical miles. Vessels bound Northward by keeping this Light open with the North Head of Catalina until Bonavista Light opens with Cape LeJean, will give the Flowers Rocks an ample berth—or when coming from the Northward and bound for Catalina, by giving the N. Head a moderate berth, you will clear the Brandies Rocks by steering for Green Island Light. It was first exhibited in 1857. Patrick Houlahan, Keeper; William Houlahan, Assistant.

Cape Race Light—Exhibits a fixed white Light, from sunset to sunrise. The Light will be visible to seaward from N.E. by E., round by the S.E. and S. to W. The Light is elevated 180 feet above the mean water level of the sea, and may be seen in clear weather 19 nautical miles from a ship's deck. The tower is striped red and white vertically. It stands close to the old Beacon, which has been cut down. The Light house is in lat. 46.39.30 N., long. 53.4.30 W., and was first exhibited in 1856. William Hally, Keeper; George Hewett, Assistant.

Dodding Head, Great Burin Island Light—This Light was put in requisition on the 3rd August, 1858, and is exhibited every night from sunset to sunrise. It is revolving, catoptric of the second order, producing a brilliant white Light every minute, with intermediate flashes at intervals of twenty seconds, burning at an elevation of 430 feet above the level of the sea, and in favorable weather can be seen 29 miles—situated in 47.0.26 North Latitude, 55.8.43 West Longitude. Martin Sparrow, Keeper; Thomas Doran, Assistant.

Offer Wadham Island Light.—Was first exhibited on the 4th October, 1858, and is lighted every night from sunset to sunrise. The Light is a steady, fixed lens-light, burning on a circular Brick Tower 100 feet above the level of the sea, and can be seen in a favourable state of the atmosphere 15 nautical miles. Situated in Latitude 49.36.0 North—Longitude 53.45 6 West. Charles Prowse, Keeper; Peter Woods, Assistant.

Bacallieu Island Light—This Light is exhibited every night from the going away of daylight in the evening to the return of daylight in the morning. The Light House is situated on the Northern end

of the
the to
tached

The
white
443 fe
nautic
atmos
the L
miles.
Ryan.

Cap
tembe
order
white
the se
nautic
11.34
which
of wh
liam

St.
set u
the N
the o
of the
the l
from
N.W
serve
tom
the u
1863

Ga
antr
has
cond
46.4
m-str
Ligh

Li
the e
been
Ligh
Batt
the
visit
mile
Mid
T
as s

of the Island—Latitude 48.8.51 North, Longitude 52.47.50 West, — the tower is of brick, the keeper's dwelling a square building detached from the tower, painted white, with the roof red.

The Light is a cato-dioptic first class Holophotal revolving white Light, shewing a flash every twenty seconds. It is elevated 443 feet above high water, and can be seen in clear weather 30 nautical miles, and a lesser distance according to the state of the atmosphere. When the Southern end of the Island bears N.N.E. the Light will not be visible when nearer the Island than eight miles. It was first exhibited in 1858. James Ryan, Keeper; John Ryan, Assistant.

Cape St. Mary's Light.—Was put in requisition on the 20th September, 1860; it is a revolving cato-dioptic Light of the first order, producing alternately every minute a brilliant red and a white Light, burning at an elevation of 300 feet above the level of the sea, and will be seen in a favourable state of the atmosphere 26 nautical miles from a vessel's deck; situated in 46.49.30 N. lat., 54. 11.34 West long. The tower is of brick, and on each side of which stands the dwellings of the Keeper and Assistant, the sides of which are painted white, roofs red. John Reiley, Keeper; William J. Collins, Assistant.

St. John's—Two red lights are exhibited every night from sunset until sunrise, intended as leading marks for vessels entering the Narrows. The lower light on the roof of the Custom House—the other 400 yards in the rear, on a white post, within a few yards of the N.E. angle of the Congregational Church, and 180 feet above the level of the sea. These Lights will be readily distinguished from other lights in the town; and keeping them in a line bearing N.W. $\frac{3}{4}$ W. will lead in the largest vessel clear of all danger. To serve as leading marks also during the day, the pediment of the Custom House has been painted white; this is to be kept in line with the upper lantern, also painted white. Exhibited 1st September, 1863.

Galantry Head, Island of St. Peter's—The Fixed Light on Galantry Head, (Island of St. Peter's,) since the 10th August, 1862, has been replaced by a Flash Light, with intervals of twenty seconds, and by one red flash after two white flashes; situated in lat. 46.45'30 N., long. 58.27.0 W. Elevation above high water 64 metres. Distance at which the Light is visible 18 miles. The Light is hidden at the Northward by the highland of St. Peter's.

Light at the South entrance St. Peter's—Since 1st October, 1862, the entrance of the harbor of St. Peter's, called South Channel, has been marked by two small Fixed Lights, one of which is a white Light illuminating three-fourths of the horizon, and placed on the Battery—and the other a red Light, on the plain at the North of the town. The white Light has an elevation of 11 metres, and is visible 6 miles. The red Light is elevated 19 metres, visible 3 miles distance. The line connecting these two lights indicates the Middle Channel.

The position of the red Light has also been so determined that as soon as it is seen on the left of Cape Eagle, vessels coming from

Columbier in beating into the N.E. entrance will have nothing to fear from the shoals of Cape Rouge.

Robert Oke, General Inspector of Light Houses.

Light Dues—One Shilling per ton on all vessels entering any port or harbor of the Colony, except coasting, sealing, or fishing vessels; but not to be levied more than once in any one year. Sealing and coasting vessels—Sixpence per ton on registered vessels of 40 tons and upwards; Fifteen Shillings per annum on all vessels less than 40 tons.

The 19th of Victoria, Cap 5, Sec. 5, enacts—"That no greater sum than £25 sterling shall be in any year levied for Light Dues on any steamer or vessel entering any port of this Colony; and no Steamer plying between Europe and any port of North America, and entering any port of this Colony as a port of Call, shall be liable to pay any Light Dues or other port charges except pilotage."

Post Office Department.

Post Master General—John Delaney, Esquire.

Chief Clerk and Accountant—James Healy.

Superintendent Money Order Office—James Healy.

Second Clerk and Assorter—John Freeman.

Third Clerk and Assorter—James Furlong.

Assistants—E. Soloman and George R. Lilly.

Letter Carrier and Messenger—George Gaden.

Office hours, from 9 o'clock, a.m., to 4 p.m., Sundays excepted.

POST MASTERS.

Harbor Grace, Andrew Drysdale; Carbonear, Nicholas Nicholle; Brigus, Sarah Stentaford, (Post Mistress); Trinity, Anne Cross, (Post Mistress); Bonavista, John Lawrence; Greenspond, William Lang; Fogo, James Fitzgerald; Twillingate, Joseph J. Pearce; Bay Bulls, Martin Williams; Ferryland, John Morry; Trepassey, John Devereux; Placentia, Mary Morris, (Post Mistress); Burin, Thomas Winter; Harbor Breton, Thomas Birkett; Burgeo, Francis A. Parson; Little Placentia, Alexander Burke; New Perlican, Francis Howell.

WAY OFFICERS.

Port-de-Grave, Matthew O'Rielly; Bay Roberts, James Fitzgerald; Blackhead, William Butt; King's Cove, Michael Murphy; Old Perlican, William Christian; Portugal Cove, Mrs. Dooley, (Way Mistress); St. Mary's, James Murphy; Oderin, Andrew Murphy; Paradise, John Power; Salmonier, John Hurley; Harbor Maine, Mrs. Brick, (Way Mistress); Hermitage, Richard Bradshaw; Catalina, John Jeans; Garnish, — Grandy; Bay-de-Verds, Elias Picco; Lamaline, James Pitman; Grand Bank, Jonathan Hickman; Fortune, Dr. Haddock; Channel, Horatio Read; Holyrood, John Veitch; Topsail, James Moyses; Hauts Harbor, Thomas Smith; Cats Cove, Timothy O'Brien.

POSTAL ROUTES.

Summer—Between St. John's and Portugal Cove, every day, except Sunday and Friday, by waggon.

Between Portugal Cove, Brigus, Harbor Grace, and Carbonear, by steamer, tri-weekly; Bay Roberts, weekly.

Overland, by waggon, for Carbonear, via Topsail, Kelligrews, Holyrood, Harbor Maine, Brigus, Port-de-Grave, Bay Roberts, Spaniard's Bay, and Harbor Grace, four hours after the arrival of the Steamer from Halifax.

Winter—Overland Mondays and Thursdays, between St. John's and Carbonear, calling at all the intermediate places.

Between Carbonear and Grates Cove, (calling at Heart's Content, New Perlican, Hants Harbor, and Old Perlican,) weekly, by messenger.

Between Carbonear and Bay-de-Verds, weekly, by messenger, calling at intermediate places.

Between New Perlican and Trinity, weekly, by boat.

Between Trinity and Bonavista, and between Trinity and King's Cove, weekly, by messenger.

Between Bonavista and Greenspond, fortnightly, by boat, touching at King's Cove or Tickle Cove.

Between St. John's, Fogo and Twillingate, monthly, by steamer, or on such other days as the Post Master General may appoint.

Between St. John's and Ferryland, weekly, by waggon, during summer months, and fortnightly in winter.

* Between Ferryland and Trepassey, fortnightly in summer, and monthly in winter, by messenger.

Between St. John's and Placentia, by waggon, at 4 o'clock, p.m., on the Tuesday after the arrival of Halifax steamer.

* Between Placentia and St. John's, by waggon, in one hour after the arrival of the Packet Boat from Burin.

* Between Salmonier and St. Mary's, by messenger.

* Between Great and Little Placentia, by messenger.

* Between Little Placentia, LaManche, Sound Island, Harbor Buffett, Red Island, Merasheen and Burgeo, by boat.

* Between Great Placentia and Burin, by boat, touching at Paradise and Oderin.

* Between Burin and Garnish, by messenger.

* Between Garnish, Grand Bank, Fortune and Lamaline, by messenger.

* Between Garnish and Harbor Breton, calling at English Harbor, by boat.

* Between Harbor Breton, Burgeo and LaPoile, by boat.

Besides the above-mentioned routes, intermediate Mails are made up and dispatched by Steamer *Ariel*.

Routes marked thus * are fortnightly during summer, and monthly during winter months.

Newspapers posted in this country, when addressed to any place in Nova Scotia, Canada, P. E. Island, Bermuda, the United States, or elsewhere, must be prepaid, by Mail, otherwise they cannot be

forwarded, except deposited in the Government Agent's Bag as merchandise.

All Correspondence addressed to the United States, must be prepaid, or it cannot be forwarded.

INLAND POSTAGE:

For Letters—Under 1/2 oz ... 5 cents.
Under 1 oz.....10 cents.
5 cents for every additional 1/2 ounce.

For book packets, pamphlets, magazines and periodicals, not exceeding three pounds in weight, transmitted by post within the Island, are charged four cents for every quarter pound of their weight.

PARCEL POST.

Parcels closed at the ends and sides may be posted at any Post Office in Newfoundland for conveyance to any other Post Office (not Way Office) in the Island, at a rate of postage subject to the following conditions:—

- 1.—No letter or letters shall be concealed.
2.—The parcel shall not contain any explosive substance, glass, liquid, or other matter likely to injure the ordinary contents of the mail, under penalty of the forfeiture of the parcel.
3.—The weight of the parcel shall not exceed 3 lbs, nor the size exceed one foot in length or breadth, or six inches in thickness.
4.—Parcels must be prepaid at the following rates:—
If weighing less than 1 lb.....24 cents.
Over 1 lb. and not exceeding 2 lb.....48 cents.
Over 2 lb. and not exceeding 3 lb.....72 cents.
5.—The parcel may be registered on payment of a fee of 10 cents in addition to the postage.
6.—If the name and address of the sender be written on the parcel, it will, if delivery should fail from any cause, be returned unopened to the sender on payment of an additional rate of 20 cents for the return conveyance.
7.—The parcel should have the words "by Parcel Post," plainly written over the address. It should be well and strongly put up, and be legibly addressed to the Post Office address of the intended receiver, including the name of the district in which the Post Office is situated. The following is an example of the mode of address recommended:

BY PARCEL POST.
To _____
_____ Post Office
District of _____
Sent by _____
_____ District of

PROHIBITARY CLAUSES

No written communication shall be inclosed in any circular, periodical, pamphlet, book, book parcel, or parcel for the Parcel Post;

and r
tal, p
No
a lett
to pa
Bo
the f
Fo
A
ther
Tabl
Af
duras
town
Sout
Hele
exce
Ac
neo,
nand
Han
burg
A
Port
22 c
F
B
Ame
L
(Eas
C
lene
Tur
G
D
I
H
N
L
P
U
C
C
Uni

and no communication shall be written upon any circular, periodical, pamphlet, book, book package, or parcel.

No letter, or any writing, or any marks to serve the purpose of a letter, shall be written upon or enclosed in any newspaper posted to pass as a newspaper.

Books, pamphlets and magazines, for Great Britain, are charged the following rates—the postage in all cases must be prepaid:—

For a packet not exceeding 4 oz.....	6 cents.
not exceeding 8 oz.....	12 cents.
over 8 ozs. and not exceeding 1 lb..	24 cents.

And so on, adding 12 cents for every additional 8 ozs., or fraction thereof.

Table of Postage Rates on Letters posted in Newfoundland for the following countries, viz:—

Africa, Ascension, Australia, Brazil, Buenos Ayres, Belize (Honduras), Ceylon, China, Costa Rica, Cuba, Cape of Good Hope, Graytown, Guatemala, Hayti, Labuan, Mexico, Montevideo, Natal, New South Wales, New Zealand, New Granada, Penang, Porto Rico, St. Helena, Surinam, Singapore, Sweden, Tasmania, Turkey in Europe, except places specified, 34 cents per $\frac{1}{2}$ oz.

Aden, Austria, Baden, Bavaria, Belgium, Belgrade, Bremen, Borneo, Bourbon (Isle of,) Brunswick, Egypt, Falkland Islands, Fernando Po, Frankfort, Gambia, Gibraltar, Gold Coast, Hamburg, Hanover, Hesse, Liberia, Lubeck, Mauritius, Mecklinburg, Oldenburg, Prussia, Saxony, Sierra Leone, per $\frac{1}{2}$ oz. 22 cents.

Azores, Canary Islands, Italy except Papal States, Malta, Naples, Portugal, Sardinia, Sicily, Smyrna, Spain, Switzerland, per $\frac{1}{2}$ oz. 22 cents.

France, Algeria, Madeira, Cape-de-Verde, per $\frac{1}{2}$ oz. 16 cents.

Bolivia, Chili, Ecuador, Peru, and places on the West Coast of America, per $\frac{1}{2}$ oz. 58 cents.

Lanarca, Seres, Tehesme, Tenedos via England, South America (East and West coast of) via Bermuda, per $\frac{1}{2}$ oz. 32 cents.

Constantinople, Dardanelles, Galatz, Gallipoli, Moldavia, Mytlenene, Rhodes, Samsonn, Salonica, Scutari, Syria, Trebizond, Tulcha, Tunia, Varna, per $\frac{1}{2}$ oz. 20 cents.

Greece and Papal States, per $\frac{1}{2}$ oz. 28 cents.

Denmark and Jassy, per $\frac{1}{2}$ oz. 28 cents.

India and the Ionian Islands, per $\frac{1}{2}$ oz. 30 cents.

Helligoland and Holland, per $\frac{1}{2}$ oz. 26 cents.

Norway, per $\frac{1}{2}$ oz. 38 cents.

Launberg, per $\frac{1}{2}$ oz. 24 cents.

Poland and Russia, per $\frac{1}{2}$ oz. 30 cents.

United Kingdom, 12 cents, single rate.

Canada, 20 cents, single rate.

Cape Breton, New Brunswick, Nova Scotia, Prince Edward Island, United States, Bermuda, West Indies, thirteen cents per $\frac{1}{2}$ oz.

Vancouver's Island and British Columbia, via Bermuda, 48 cents per $\frac{1}{2}$ oz.

Rule of Rating Letters by British Packet.

All Letters for the United Kingdom, United States, British Provinces and Possessions, and West Indies, are to be charged with a single rate of Postage, if not exceeding the weight of $\frac{1}{2}$ an oz. ; double rate if exceeding $\frac{1}{2}$ but not over 1 oz. ; quadruple rate if exceeding 1 but not over 2 ozs. ; and so on charging 2 rates for every oz., or fractional part of an oz., over the first oz.

Letters posted in Newfoundland for delivery at any place within the Island, are charged 5 cents for every $\frac{1}{2}$ oz.

MONEY ORDER BRANCH.

James Healy, Superintendent.

Office hours from 9 a.m. to 4 p.m.

Money Orders are now interchanged with the United Kingdom and Canada, at the following rates of Commission :—

Scale for United Kingdom—Orders up to £2 stg., 1s. stg. ; from £2, up to £5, 2s. ; from £5, up to £7, 3s. ; from £7 up to £10, 4s.

Scale for Canada—Orders up to £5, 1s. ; from £5 to £10, 2s. No single Order can be granted for more than £10. No half-pence to be introduced in the orders.

SYSTEM.

1—Money Orders are made out in forms supplied for the use of the Money Order Offices.

2—Persons applying for Money Orders are recommended to use printed "Application Forms" printed for that purpose.

3—Place of payment of a Money Order may be changed in accordance with instructions provided therefor.

4—Alteration of payee's name may be effected, by issue of a new order and payment of commission thereon.

5—Applicants for Money Orders are expected to observe due care in the examination of the same, relative to filling and stamping ; defects in Orders, when presented for payment, may cause difficulty and delay, for which the paying Office is not to be held accountable.

6—Postmasters should be particularly careful to obtain from the person who presents a Money Order, whether the rightful owner or not, full information as to the Christian name, surname and address, of the party who originally obtained it, unless such party be a firm, when the name of the firm will suffice. *The only exception to this rule is*—When an Order is presented through a Bank, in which case it will suffice that the order, being properly signed, be also crossed with the Banker's name.

7—As, however, *after once paying a Money Order, by whomsoever presented, the Office will not be liable to any further claim, the public are strictly cautioned,—*

1st—To take all means to prevent the loss of the Money Order.

2nd
3rd
8—Pay
the s
other
cond
befor
issue
Neglect
besid
The Mo
ral P
Brigu
Harbo
Twili
9—Post
trans
wise.
Govern
member
Hon. R
the Ho
Ambros
sembly.
Direc
Cashi
The l
o'clock,
business
Cashi
Josep
Hon. Jo
Con
John
General

- 2nd—To be careful on taking out an Order, to state correctly the Christian as well as the surname of the person in whose favor it is to be drawn.
- 3rd—To see that the name of the person taking out the Money Order is correctly known to the person in whose favor it is drawn.
- 8—Payment of a Money Order must be obtained before the end of the sixth calendar month after that in which it was issued, otherwise a new order will be necessary, for which a second commission will be charged; and if the order be not paid before the twelfth calendar month after that in which it was issued, all claim to the money will be lost.
- Neglect of the foregoing instructions will risk the loss of the money, besides leading to delay and trouble in obtaining payment.
- The Money Order Offices in Newfoundland, at present, are: General Post Office, St. John's; Post Offices at Bay Bulls, Bonavista, Brigus, Burgeo, Burin, Carbonear, Ferryland, Fogo, Greenspond, Harbor Breton, Harbor Grace, Placentia, Trepassey, Trinity, Twillingate.
- 9—Postmasters should recommend the use of Money Orders for the transmission of money, in preference to such transmission otherwise.

Savings' Bank.

Governors—Three members of the Legislative Council, and five members of the House of Assembly, viz.:—Hon. Nicholas Stabb, Hon. Robert Kent, and Hon. James S. Clift, of the Council; and the Hon. the Speaker, Dr. Winter, Hon. Robert Carter, R. N., Ambrose Shea, and John Leamon, Esquires, of the House of Assembly.

Directors—Hon. N. Stabb, Hon. the Speaker, and Dr. Winter.

Cashier—Hon. Edward Morris.

The Bank is open every Monday between the hours of 12 and 2 o'clock, for Depositors' business; and on Wednesdays for discount business, from 11 to 2 o'clock.

BRANCH BANK, HARBOR GRACE.

Cashier and Clerk—Joseph Peters.

Poor Commissioners.

Joseph Shea, Esq., M.D., (Stipendiary,) Hon. Robert Carter, and Hon. John Bemister.

Commissioners for Reduction of Public Debt.

John Kent, Esq., Hon. Laurence O'Brien, and the Receiver General.

Commissioners of Pilots.

Chairman—John B. Bulley, Esq ; Hon. Laurence O'Brien, Hon. Nicholas Stabb, Robert Grieve, Ambrose Shea.

Table of Rates of Pilotage of Vessels in and out of the Harbor of St. John's.

	Currency.
Vessels under 80 tons new measurement	£2 0 0
Vessels from 80 to 100 tons new measurement	2 10 0
Vessels from 100 to 120 tons new measurement	2 15 0
Vessels from 120 to 160 tons new measurement	3 0 0
Vessels from 160 to 200 tons new measurement	3 5 0
Vessels from 200 to 240 tons new measurement	3 10 0
Vessels from 240 to 280 tons new measurement	3 15 0
Vessels from 280 to 300 tons new measurement	4 0 0
Vessels from 300 to 350 tons new measurement	5 0 0
Vessels from 350 to 400 tons new measurement	6 0 0
Vessels from 400 to 500 tons new measurement	7 0 0
Vessels from 500 to 600 tons new measurement	8 0 0
Vessels from 600 to 700 tons new measurement	9 0 0
Vessels from 700 to 800 tons new measurement	10 0 0
Over that size—for ever 100 tons additional	0 10 0
And on no one vessel is the pilotage to exceed	12 0 0

All coasting vessels which may take pilots to pay one half of the above rates of pilotage, in proportion to their tonnage.

The above scale of pilotage, shall be payable on the register tonnage of all such vessels, as ascertained before going out of the harbor.

	Currency.
Her Majesty's Ships under sixth-rate	£3 10 0
Do. do. of fourth, fifth, and sixth-rate	6 10 0
Do. do. of first, second, and third-rate	8 10 0

All merchant or mail steamers to pay 6d. for each horse power, and on no one ship to exceed twelve pounds, currency, to be ascertained either by ship's register, or if necessary, by captain's affidavit.

Commissioners of Wrecked Property.

Placentia and St. Mary's, George Simms, jr. District of Burin, John Hooper. Channel, Horatio Reade. LaPoile, Thomas Reade. Burgeo, Francis Parsons. Placentia, James E. Croucher. St. Mary's, James Murphy. Ferryland, Martin Williams and W. W. Carter. Bay de Verds, John Lewis. Trinity South, James L. Mews. Trinity North, Ronald Bremner. Greenspond, John T. Oakley. Foggo, James Fitzgerald. Twillingate, Thomas Peyton. Fortune Bay, Thomas Birkett. Conception Bay, G. W. R. Hierlihy. St. John's, John B. Bulley. Labrador, Robert H. Ellis.

Board of Health.

Health Officers.—Henry Shea, M.D., St. John's. William Dow, M.D., Harbor Grace. Richard Berny, M.D., Carbonear. Francis Moran, M.D., Burin.

Medical Officer to Board of Trade for Sick Seamen, Port of St. John's.—William C. Simms, M.D.

Judicial Department.

Supreme Court—Chief Justice—Sir Francis Brady, Knight. Assistant Judges—Honorable Philip Francis Little and Bryan Robinson. Attorney General—Honorable Hugh W. Hoyles. Solicitor General—John Hayward, Esquire. Queen's Counsel—Hon. Hugh W. Hoyle, Hon. George H. Emerson, Frederick B. T. Carter, and John Hayward. Chief Clerk and Registrar Supreme and Central Circuit Courts—Matthew W. Walbank. Chief Clerk and Registrar Northern Circuit Court—Lewis W. Emerson. Chief Clerk and Registrar Southern Circuit Court—George Simms. Crier of the Supreme Court and Tipstaff—William Howlin.

Barristers and Attornies of the Supreme Court at St. John's, according to seniority, exclusive of the Attorney and Solicitor Generals and Queen's Counsel.—Charles Simms, John S. Stevens, Robert R. W. Lilly, George J. Hogsett, Thomas J. Kough, Matthew W. Walbank, William V. Whiteway, Hon. Robert J. Pinsent, Archibald Emerson, Charles H. Simms, Augustus O. Hayward, Daniel W. Prowse, Joseph J. Little, William L. O'Donnell, Michael Joseph O'Mara, Prescott Emerson.

Attornies at Law.—Robert R. Holden, Edmund M. Hanrahan, Robert Joseph Kent.

Students admitted Members of the Law Society.—William O. Wood, James M. Winter, Alexander J. W. McNeilly.

Barristers and Attornies, Harbor Grace.—John Hayward, Richard Anderson, Henry C. Waits, Henry A. Clift.

Law Society Benchers.—Frederick B. T. Carter, Treasurer; Hon. Attorney General, Solicitor General, William V. Whiteway, Matthew W. Walbank. Secretary and Treasurer—W. V. Whiteway.

Sheriffs—Central District, John V. Nugent. Northern District, Garland C. Gaden. Southern District, John Stephenson.

Masters-in-Chance.—Hon. George H. Emerson, Charles Simms, Thomas J. Kough, Hon. Robert J. Pinsent, William V. Whiteway, M. W. Walbank.

Vice-Admiralty Court—Judge, the Chief Justice for the time being. Registrar, Peter W. Carter. Marshal, James Bayly. Surrogates, D. W. Prowse and Henry T. B. Wood, St. John's. Lewis W. Emerson, Harbor Grace.

TERMS OF COURTS.

Central Circuit Court—Spring Term commences 20th April, and to continue three weeks. Autumn Term, 20th October, and to con-

tinue three weeks, with power to the presiding Judge to prolong the term from day to day, not exceeding six days in all.

Sessions after Term—The second Monday in February, March, and July, and to continue for a period not exceeding six days.

Supreme Court—Spring Term commences 20th May, to continue three weeks. Autumn Term, 20th November, and to continue three weeks, with power to the Judges to prolong the term from day to day, not exceeding six days in all.

Sessions after Term—The first Monday in February, March, April, and July, and to continue for a period not exceeding six days.

Commissioners for Issuing Mesne and Final Process and Subpœnas returnable into the Supreme and Circuit Courts, for taking Affidavits, and Recognizance of Bail in any Suit depending in said Courts.

Central District—Matthew W. Walbank and Henry T. B. Wood, St. John's.

Northern District—Lewis W. Emerson, John Fitzgerald, Harbor Grace. Israel McNeil, Carbonear. John C. Nuttall, John Wilcox, Brigus. John Lewis, Lower Island Cove. George W. R. Hierlihy, Bay Roberts. William Holden, Harbor Maine. James L. Mews, Hant's Harbor. William Christian, Old Perlican. Michael Howley, New Perlican. Benjamin Sweetland, and Robert Bayly, Trinity. Alexander Bremner and John Lawrence, Bonavista. John T. Oakley, Greenspond. James Fitzgerald, Fogo. John Peyton, Twillingate. Charles Newhook, New Harbor. Thomas Hutchings, Bay-de-Verds. Michael Murphy, King's Cove.

Southern District—Luke Brown, Ferryland. Francis L. Bradshaw, Placentia. Thomas E. Collett, Harbor Buffett. John Hooper, Burin. William Pittman, Lamaline. Josiah Blackburn, Grand Bank. Francis A. Parsons, Burgeo. Thomas Reade, La-Poile. James Murphy, St. Mary's. Horatio H. Reade, Channel, (Port-aux-Basque.) John L. McKie, Bay Bulls. George Simms, Trepassey. Thomas Birkett, Harbor Breton. John Allery, St. George's Bay.

STIPENDIARY MAGISTRATES.

St. John's—Peter W. Carter, and Thomas Bennett.

Conception Bay—Joseph Peters, Harbor Grace. Israel McNeil, Carbonear. John Wilcox, Brigus.

Trinity Bay—Benjamin Sweetland, Trinity. James L. Mews, Old Perlican.

Bonavista—Alexander Bremner.

Twillingate—John Peyton.

Ferryland—Martin Williams, Bay Bulls. Edmund Hanrahan, Ferryland.

Placentia and St. Mary's—Francis L. Bradshaw, Placentia. James Murphy, St. Mary's.

Burin—Josiah Blackburn, Grand Bank. Clement Benning, Lamaline.

Fortune Bay—Thomas Birkett, Harbor Breton.

LaPoile—Thomas Reade.

JUSTICES OF THE PEACE.

For the Island of Newfoundland—The Judges of the Supreme Court, the Members of the Executive Council, and Peter W. Carter, Thomas Bennett, Charles Fox Bennett, John Kent, Ambrose Shea, Thomas Glen, Edmund Hanrahan, Edward D. Shea, Charles Simms, James J. Rogerson.

Central District—Stephen Rendell, John Winter, James Cormack, John O'Mara, Patrick Strapp, Joseph Peters.

Northern District—Patrick Strapp, Benjamin Sweetland, John Peyton, William Kelson, John T. Oakley, John Tilly, James L. Mews, Robert Ollerhead, Alexander Bremner, John G. Skelton, Thomas Hutchings, John Munn, William H. Ridley, Joseph Shears, David Candow, William S. Green, John Rorke, James L. Prendergast, John Wilcox, James Keeping, Charles Newhook, John Leamon, Philip Levesconte, James Fitzgerald, Joseph Peters, Lewis W. Emerson, Richard Berny, M.D., Israel McNeil, John Lewis, Reuben Bemister, George Skelton, John McCarthy, Michael Howley, Michael Murphy, James Saint, Peter Ward, James Alcock, William Sterling, Joseph J. Pearce, Charles Edmonds, Nathan Norman, William Lang, William Holden, Richard Cormack, Hay Findlater, John Sheehan, William P. Taylor, Gilbert H. Cole, John W. Owen, George W. R. Hierlihy, James N. Leamon, Edward T. Pike, James N. Noonan, Alexander W. Bremner, and George C. Rutherford.

Southern District.—John L. McKie, Francis L. Bradshaw, Thomas E. Gaden, Josiah Blackburn, George Simms, Clement Benning, James Murphy, Thomas Reed, Thomas Renouf, Edward Evans, Thomas E. Collett, Francis Berteau, Robert H. Dawe, John Walsh, John O'Neil, Owen Pine, Richard Marshall, Luke Brown, Clement Mallett, Samuel Howe, William F. Gallop, Patrick Furlong, Thomas Winter, Philip Sorsoleil, Martin Williams, John W. English, and Thomas Birkett.

St. George's Bay—Horatio H. Forrest, Elwin Alexander.

Labrador—Nathan Norman, Thomas R. Crockwell, Donald A. Smith, William B. Bendall, Sampson Daw, Thomas G. Larmour, George Goodridge.

LABRADOR COURT—*Under Act 26 Vic., Cap 2.*

Judge—Benjamin Sweetland, J. P., Esq.

Bailliff—Jonas Purchase.

CLERKS OF THE PEACE.

St. John's, (for Central District)—Robert R. W. Lilly. Harbour Grace—John Fennell. Carbonear—John Mackay. Brigus—John C. Nuttall. Trinity—Robert Bayly. Bonavista—John Lawrence. Twillingate—Aaron A. Pearce. Burin—Edward Morris. Harbour Breton—Samuel Howe.

CORONERS.

St. John's—Joseph Shea, M.D. Harbour Grace—Joseph Peters. Bay-de-Verds—John Lewis. Trinity—Benjamin Sweetland. Greenspond—Dr. Skelton. Ferryland—John Stephenson. Bay Bulls—Martin Williams. Trinity Bay (South Side)—Michael Howley. Bonavista—John Lawrence. Harbor Maine—Patrick Strapp. Hermitage Bay—Thomas Winter.

POLICE.

General Superintendent of Police Constabulary for Newfoundland—Timothy Mitchell. St. John's—Sergeants, William Ferguson and James Kenna.

Harbour Grace—High Constable, Luke Fallon.

Carbonear—High Constable, Peter McBaie.

INSPECTORS OF WEIGHTS AND MEASURES.

Thomas S. Dwyer, St. John's. William Meagher, Harbor Grace. Peter McBaie, Carbonear. Nicholas Jeynes, Brigus.

Educational Institutions.

ST. JOHN'S ACADEMY.

Directors—Church of England Board—Right Rev. Dr. Feild, Thomas Bennett, Hon. Robert Carter, Hon. Hugh W. Hoyles, Hon. Judge Robinson. Masters—Rev. Joseph Phelps, Rev. Charles F. Jagg.

Roman Catholic Board—Right Rev. Dr. Mullock, John Kent, Hon. John Rochfort, M.D., Hon. Laurence O'Brien, Hon. Judge Little. Masters—Rev. M. Walsh, Rev. R. O'Donnell, T. Talbot, M. Fenlon, P. Comertord, E. Bennett.

General Protestant Board—Walter Grieve, Thomas McMurdo, John B. Bulley, Hon. James O. Fraser, Hon. Peter G. Tessier, William Boyd. Master—Adam Scott.

NEWFOUNDLAND WESLEYAN ACADEMY.

Directors—Rev. John S. Peach, James J. Rogerson, Hon. Nicholas Stabb, Hon. John Bemister, Joseph Woods. Head Master—Alexander Simpson Reid, M.A. Assistant Teacher—Corlett W. Shenstone.

GRAMMAR SCHOOLS.

Directors—Harbour Grace—John Munn, William H. Ridley, John Hayward, Hugh W. Trapnell, John Ryan, D. Greene. Master—John I. Roddick.

Carbonear—Richard Berny, John McCarthy, Edward T. Pike, Michael Bolger, Moses Wiltshire. Master—

COMMERCIAL SCHOOLS.

Commissioners—Brigus—James N. Leamon, John C. Nuttall, Thomas Kelly. Teacher—William Greene.

Broad Cove (Bay-de-Verds)—Rev. J. S. Peach, Rev. W. E. Shenstone, John Lewis, William Butt, jr. Teacher—Alexander M'Kay.

Trinity—Benjamin Sweetland, A. W. Bremner. Teacher—

Old Perlican—Rev. John Waterhouse, Jatez Tilly, and Stephen K. March. Teacher—William Christian.

Bonavista—Peter Ward, James Saint, John Lawrence. Teacher—Samuel Rowsell.

King's Cove—Rev. M. Scanlan, Michael Murphy. Teacher—

Ferryland—Rev. James Murphy, Robert Carter, Luke Brown, Michael Devereux. Teacher—Patrick Flannery.

Burin—Episcopal Branch, — — —, Teacher; Roman Catholic, Michael O'Donnell, Teacher; Wesleyan, Jonathan Parsons, Teacher.

Harbor Breton—Rev. W. K. White, Rev. Edward Colley, Clement Mallett, Samuel Howe. Teacher— — — —.

Twillingate—Rev. Thomas Boone, Rev. James A. Duke and John W. Owens, John Roberts, William Lethbridge.

COLONIAL AND CONTINENTAL CHURCH SOCIETY.—[Incorporated.]

Patron—Her Most Gracious Majesty the Queen. Vice-Patrons—His Grace the Archbishop of Canterbury, His Grace the Archbishop of York. President—The Most Hon. the Marquis of Cholmondeley, and 80 Vice-Presidents, consisting of Peers of the United Kingdom, English and Colonial Bishops, Colonial Governors, Members of Parliament, &c., &c.

Corresponding Committee in Newfoundland—President, Hon. Hugh W. Hoyles; Vice-President, Dr. Winter; Treasurer, E. L. Jarvis; Inspector and Organizing Master, J. W. Marriott; Secretary, James Bayly; Rev. T. M. Wood, F. B. T. Carter, Hon. R. J. Pinsent, Hon. J. S. Clift, Theodore Clift, D. W. Prowse, John Bowring. Bankers, Union Bank.

Teachers—St. John's, Mr. Marriott and Mr. John Bishop, Boys School; Mrs. Burke, Girls' School; Training Pupil Teachers of the Society, Misses Winter and Saunders; Infants' School, Misses Anderson and Maret. Belloram, Rev. J. and Mrs. Marshall. Petty Harbor, Mr. and Mrs. Bishop. Portugal Cove, Mr. Ward. Brigus, Mr. and Mrs. Mills. Port-de-Grave, Mr. and Mrs. Maddock and Miss Collier. Spaniards' Bay, Mr. and Mrs. Earle. Bishop's Cove, Mr. S. Earle. Harbor Grace, Mr. and Mrs. Gardner. Heart's Content, Mr. Thompson. Trinity, Mr. Collis and Miss Lockyer. Bonavista, Mr. and Mrs. Lawrence. Salvage, Mr. and Mrs. Killigrews. Greenspond, Mr. Edwards. Swain's Island, Mr. Bishop. Twillingate, Mr. Crosby. Fogo, Mrs. Plomer.

WESLEYAN SCHOOL AND AGENCY SOCIETY.

Committee—Rev. J. S. Peach, Chairman and Treasurer; Rev. J. Dove, Secretary; the Ministers of the Newfoundland District, and John Munn, James J. Rogerson, John Bulley, sr., Joseph Woods, Israel McNeil, James N. Leamon.

Teachers—Pouch Cove, Joseph Baggs. Carbonear, James Haddon. Brigus, Francis Skeanes. Port-de-Grave, John Brown.

Blackhead, Joseph Thistle. Old Perlican, William Christian. Bonavista, Miss Snelgrove. Burin, Joseph H. Parsons. Sound Island, Charles Downe. Green's Harbor, Simcon Reed. Garia, Francis Scott.

PRESBYTERIAN (ST. ANDREW'S) SCHOOL, ST. JOHN'S.

Committee—John Boyd, Secretary; Gilbert Browning, John B. McLea, Alex. McKay, Andrew Thomson, Alex. Mitchell. Teacher—Robert Scott, M.A.

BOARDS UNDER EDUCATION ACT.

St. John's—Rev. Thomas M. Wood, Rev. P. Prestwood, or the Senior Wesleyan Minister, Rev. Moses Harvey, Rev. George M. Johnson, Rev. D. McRae, Rev. John Maze, Hon. Nicholas Stabb, William H. Mare, Hon. James S. Clift, John Winter, M.D., and W. V. Whiteway.

Harbor Grace.—Rev. Bertram Jones, Rev. James Dove, and Richard Anderson, John Munn, William H. Ridley, John Hayward, and Rev. William Meek, (Island Cove.)

Carbonear—Rev. John Winterbotham, Rev. William J. Hoyles, and John Rorke, Edward Pike, James Forward, jr., Israel McNeil, and Benjamin Gould.

Bay Roberts—Rev. Martin Blackmore, William S. Green, Rev. James C. Harvey, Rev. Joseph Pascoe, and Thomas Marten, jr., Isaac Bartlett, and John M. Maddock.

Brigus—Rev. Thomas Harris, Rev. Robert H. Taylor, and John Leamon, William S. Mills, Christopher Norman, James Wilcox, and Jonathan Percey.

Bay-de-Verds—Rev. John S. Peach, Rev. Oliver Rouse, Rev. W. E. Shenstone, and John Lewis.

Trinity Bay North—Rev. Benjamin Smith, Rev. Charles Ladner, and William Kelson, Benjamin Sweetland, Robert Bayly, Alexander Bremner, jr., and Gilbert H. Cole.

Trinity Bay West—Rev. George Gardner, and Robert Ollerhead, James Moore, Robert Rockwood, Heart's Content; Charles Newhook, New Harbor; James Wiseman, Hearts Delight; Reuben Bemister, New Perlican, Elias Warren, Joseph Harnum.

Trinity Bay South—Rev. John Waterhouse, Rev. O. Rouse, and James Mews, Jabez Tilly, and Dr. Joseph Coultis.

Trinity Bay East—Rev. William Netten, and Alexander Bremner, William Norman, John Daymond, Robert Tilly, jr., and Benjamin Snelgrove.

Bonavista Bay North—Rev. William J. Milner, and John T. Oakley, George Skelton, M.D., James Noonan, Darius Blandford, Charles Edwards.

Bonavista Bay South—Rev. A. E. C. Bayly, Rev. C. Comben, and Alexander Bremner, James Saint, John G. Skelton, William Brown, and Stephen Abbott.

Bonavista Bay West—Rev. William Kirby, David Candow, Tickle Cove; John Shears, Open Hall; and Samuel Coffin, William Hancock, jr., and David Candow, jr.

Fogo—Rev. Reginald M. Johnson, Rev. Thomas Fox, and Hay Findlater, Peter Carter, Charles Willis, Henry Simons, — Williams, (Bar'd Island Harbor.)

Twillingate—Rev. Thomas Boone, Rev. James A Duke, and John Peyton, Charles Edmonds, William Lethbridge, and Rev. Josiah Darrell, Herring Neck.

Moreton's Harbor—Rev. G. S. Chamberlain, Rev. Jabez. Rogers, and Robert Small, Josiah Manuel, Exploits; Job Stuckless, and William Barnes.

Ferryland—Rev. Robert Temple, Robert Carter, James H. Carter, James Carter, John Morry, Peter Winsler, Daniel H. Winsler.

Placentia—Rev. John Kingwell, James Butler, Thomas E. Collett, George H. Bennett, Thomas Collins, (Oderin), James Hollett, and James Chalmers.

Burin—Rev. S. T. Teed, Rev. William Rozier, Francis Berteau, Owen Pine, Richard Willie, George Goddard, and William Paul.

Lamafine—Rev. A. E. Gabriel, George H. Evans, George Cake, James Pitman, George Bust, and Thomas Laskey.

Grand Bank—Rev. John S. Phinney, Edward Evans, Josiah Blackburn, James Hickman, and Jonathan Snook.

Fortune Bay—Rev. William K. White, Rev. E. Colley, Rev. John Marshall, Samuel Howe, Arthur Drever, Clement Mallett, and W. J. Gallop.

Burgeo—Rev. John Cunningham, Rev. Edward Colley, George Hunt, M.D., William Scott, Stephen Vatcher.

LaPoile—Rev. George Hooper, Rev. John M. Pike, Thomas Read, William Thomas, Thomas Anderson, and Philip Sorsoliel.

Channel—Rev. W. W. LeGallais, Rev. Isaac Howie, John Gillam, John Pike, William Gillam, John LeBrock, and Edward Genge.

Protestant Inspector of Schools—John Haddon.

ROMAN CATHOLIC SCHOOLS.

St. John's—Orphan Asylum, (Boys). Teachers—Thomas McGrath, Francis Grace; Industrial Department, Bartholomew Connors.

St. Patrick's, River Head—Teacher—John Dalton.

Harbor Grace—St. Patrick's Free School, (Boys). Teacher—Hamilton.

BOARDS UNDER EDUCATION ACT.

St. John's—Right Rev. John T. Mullock, D.D.; John Kent, Hon Laurence O'Brien, and Richard Howley.

Harbor Grace, Carbonear, Bay-de-Verds, and Trinity South and West—Right Rev. Dr. Dalton, John McCarthy, Patrick Devereux, James L. Prendergast, and Michael Bolger.

Brigus—Rev. E. O'Keefe, Patrick Nowlan, and Richard Cormick.

Harbor Maine—Very Rev. Kyran Walsh, V.G., and Patrick Strapp, William Holden, Richard Woodford, Charles Furey, and William Woodford.

Trinity Bay North—Right Rev. Dr. Dalton, Rev. J. Scanlan, and John Murphy, P. Murphy, Robert Lawler.

Bonavista Bay South—Right Rev. Dr. Dalton, Rev. M. Scanlan, and William Hartery, James Connors, Michael Murphy, John Ryan, and John Murphy.

Fogo—Right Rev. Dr. Dalton, Rev. P. Ward, and J. Fitzgerald, Miles Burke, (Joe Bat's Arm,) William Green, Daniel Bryan, (Til-ton Harbor.)

Ferryland—Rev. James Murphy, Rev. William Forristal, and Henry O'Neil, Philip Jackman, Nicholas Power, Richard Cashin, Gerald Jackman.

Bay Bulls—Rev. P. Cleary, and Martin Williams, Martin Driscoll, Michael Driscoll, J. Blackler, Michael Carey, (Witless Bay) and Thomas Gatherall (Balline).

Great Placentia—Rev. E. Condon, F. L. Bradshaw, Maurice Power, Thomas Rielley, Michael Sinnott, and John Sinnott.

Little Placentia—Rev. Pelagius Nowlan, and Thomas Freeman, Alexander Burke, John Rielley, and Thomas Keits.

Placentia West—Rev. James Walsh, and Thomas Sullivan, Timothy Connors, Daniel Ryan, and Denis Ryan.

St. Mary's—Rev. J. Ryan, and J. Walsh, John Grace, William Burke, Michael Fagan, James Murphy, and John Whelan.

Trepassey—Rev. John Ryar, and James Waddleton, John Tobin, James Devereux, John Neill, jr., and John Hewitt.

Burin—Rev. John Collen, Patrick Morris, Richard Marshall, John Power, Matthew Marshall, Edward Morris, and William Fitzpatrick.

Fortune Bay—Rev. E. Brennan, Rev. John Cullen, and P. Burke. W. Burke, P. Burke, jr., T. Kinshella, and T. Hearne.

Roman Catholic Inspector of Schools—Michael J. Kelly.

Ecclesiastical Department.

CHURCH OF ENGLAND.

The Right Rev. EDWARD FEILD, D.D., Lord Bishop of Newfoundland. (vacant,) Archdeacon and Ecclesiastical Commissary.

Deanery of Avalon—Rev. John M. Noel, Ferryland. Rev. George M. Johnson, Petty Harbor. Rev. Benjamin Fleet, Fox Trap. Rev. C. Palairat, M.A., Topsail. Rev. F. C. Jagg, Portugal Cove. Rev. C. S. Medley, B.A., St. Mary's. Rev. Thomas M. Wood, (Rural Dean) St. Thomas's.

Deanery of Conception Bay—Rev. M. Blackmore, (Rural Dean) Rev. W. C. Smears, Bay Roberts. Rev. James C. Harvey, Port-de-Grave. Rev. W. J. Hoyles, Carbonear. Rev. Bertram Jones, Harbor Grace. Rev. Oliver Rouse, Bay-de-Verd. Rev. R. H. Taylor, Brigus. Rev. William F. Meek, Island Cove.

Deanery of Trinity Bay—Rev. George Gardner, Heart's Content. Rev. T. Dobie, New Harbor. Rev. W. Kirby, King's Cove. Rev. W. J. Milner, Greenspond. Rev. William Netten, Catalina. Rev. A. E. C. Bayly, Bonavista. Rev. Benjamin Smith, (Rural Dean)

Trinity. Rev. Charles R. West, Salvage. Rev. John G. Cragg, Pinchard's Island.

Deanery of Notre Dame Bay—Rev. Thomas Boone, (Rural Dean) Twillingate. Rev. Josiah Darrell, Herring Neck. Rev. R. M. Johnson, Fogo. Rev. George S. Chamberlain, Moreton's Harbor. Rev. R. Temple, White Bay.

Deanery of Placentia Bay—Rev. William Rozier, Burin. Rev. J. Kingwell, Harbor Buffett. Rev. A. E. Gabriel, Lamaline.

Deanery of Fortune Bay—Rev. George H. Hooper, LaPoile. Rev. Henry Lind, St. George's Bay. Rev. Edward Colley, Hermitage Bay. Rev. John Cunningham, Burgeo. Rev. W. W. LeGalais, Channel. Rev. John Marshall, Belleoram. Rev. William K. White, (Rural Dean) Harbor Briton.

Labrador— ——— Forteau. Rev. George Hutchinson, B.A., Battle Harbor.

Theological Institution—Principal—Rev. G. P. Harris, M.A. Students—Ulric Rule, W. Oakley, Epiphanius Wilson, Theophilus Neiten, Henry M. Skinner, John Lockward.

Newfoundland Church Society—Patron—His Excellency the Governor. President—The Right Rev. the Lord Bishop of Newfoundland. Vice-Presidents—The Rural Deans. Treasurer—William H. Mare. Secretary—Rev. George M. Johnson. Committee—John Tunbridge, F. B. T. Carter, J. C. Withers, C. Crowdy, M.D., Hon. H. W. Hoyles, K. McLea, jr., John Winter, M.D., John H. Warren, Henry K. Dickinson, T. Bennett, J.P., George J. Hayward, Hon. Judge Robinson, W. V. Whiteway, G. T. Rendell, H. LeMessurier.

ROMAN CATHOLIC CHURCH.

DIOCESE OF ST. JOHN'S.

The Right Rev. JOHN THOMAS MULLOK, Lord Bishop of St. John's.

Very Rev. P. Cleary, Dean.

Very Rev. K. Walsh, Vicar-General.

Very Rev. A. Belanger, Vicar General.

St. Bonaventure's College—Rev. M. Walsh, Rev. R. Howley, D.D. T. Talbot, M: Fenelon.

St. John's Cathedral—Right Rev. J. T. Mullock, D.D., Rev. Jeremiah O'Donnell, Rev. John Vereker, Rev. D. O'Donnell.

St. Patrick's—Rev. J. Conway, Rev. W. Walsh.

St. Bonaventure's—Rev. M. Walsh, Rev. R. Howley, D.D.

Torbay—Rev. Edward Troy.

Portugal Cove—Rev. Thomas O'Connor.

Witless Bay—Very Rev. Dean Cleary, Rev. J. Scott.

Ferryland—Rev. James Murphy.

Fermeuse—Rev. J. Forristall.

St. Mary's—Rev. John Ryan.
 Trepassey—Rev. M. Hannebury.
 Placentia—Rev. E. Condon.
 Little Placentia—Rev. Pelagius Nowlan, Rev. D. O'Brien.
 St. Kieran's—Rev. James Walsh, Rev. M. McGrath.
 Burin—Rev. Richard O'Donnell, Rev. M. Berney, Rev. James Cullen.
 St. Lawrence—Rev. Richard Dunphy.
 Harbor Breton—Rev. E. Brennan.
 St. George's Bay—Very Rev. Alexander Belanger, V.G.
 Harbor Main—Very Rev. Kyran Walsh, V.G., Rev. P. O'Donnell.
 Brigus—Rev. E. O'Keefe.
 College, 1; Convents—St. John's, 4; Witless Bay, 1; Ferryland, 1; Fermeuse, 1; St. Mary's, 1; Placentia, 1; Burin, 1; Harbor Main, 1; Brigus, 1; Belvedere Female Orphanage, Orphans 64.

DIOCESE OF HARBOR GRACE.

The Right Rev. JOHN DALTON, D.D. Lord Bishop of Harbor Grace.

Rev. John Walsh, Very Rev. H. Carfagnini.
 Carbonear—Rev. John O'Connor.
 Northern Bay—Very Rev. Bernard Duffy, V.G.
 Bay-de-Verde—Rev. J. Cummins.
 King's Cove—Rev. Matthew Scanlan.
 Bonavista—Rev. James Brown.
 Tilton Harbor—Rev. P. Ward.
 Convents—Harbor Grace, 1; Carbonear, 1.

CONGREGATIONAL CHURCH.

The Rev. JOHN MAZE, Queen's Road Chapel, St. John's.

WESLEYAN METHODIST CHURCH.

The Rev JOHN S. PEACH, Chairman of the District. The Rev James Dove, Financial Secretary.
 St. John's—Rev Paul Prestwood, Rev Alfred W. Turner, Rev Joseph Gaetz; Rev Adam Nightingale, Supernumerary
 Harbor Grace—Rev James Dove
 Carbonear—Rev John Winterbotham, Rev John S. Allen
 Brigus—Rev Thomas Harris
 Port-de-Grave—Rev Joseph Pascoe
 Blackhead—Rev John S. Peach
 Island Cove—Rev William E. Shenstone
 Old Perlican—Rev John Waterhouse
 Hant's Harbor—One to be sent
 Trinity—Rev Charles Ladner

Bonavista—Rev Charles Comben, Rev John Goodison

Twillingate—Rev James A. Duke

Burin—Rev S. T. Teed

Grand Bank—Rev John S. Phinney

Missions of Conference.

Labrador—Supplied during Summer by the Rev John S. Allen

Petites—Rev John M. Pike

Channel—Rev Isaac Howie

Exploits, Burnt Island—Rev Jabez A. Rogers

Fogo and Change Islands—Rev Thomas Fox

Greenspond—One wanted

Little Bay Island—To be supplied by Chairman.

CHURCH OF SCOTLAND.

The Rev DONALD MCRAE, St. Andrew's Church, St. John's

FREE PRESBYTERIAN CHURCH.

The Rev MOSES HARVEY, St. John's

The Rev. Alexander Ross, Harbor Grace.

LAYMEN LICENSED TO CELEBRATE MARRIAGE:

Charles Harris, Gooseberry Island. George Goodridge, Labrador

Chamber of Commerce, St. John's.

Stephen Rendell, President; Hon P. G. Tessier and John Bowring, Vice-Presidents; Henry K. Dickinson, Secretary and Treasurer; Frederick J. Wyatt, Augustus Harvey, Robert Alexander, Robert L. Muir, Hon Nicholas Stabb, Hon James S. Clift, John B. McLea, William H. Mare, Robert Thorburn.

Manager of Commercial Rooms—John B. Bulley.

Banks.

UNION BANK OF NEWFOUNDLAND.

Directors—Hon L. O'Brien, Robert Grieve, Robert Alexander, Robert Thorburn, A. W. Harvey.

John W. Smith, Manager. Randal Greene, Accountant and Teller. Charles S. Pinsent and Alfred G. Smith, Clerks. Hon Hugh W. Hoyles, Q.C., Solicitor.

Discount Days—Mondays and Thursdays, from 12½ o'clock.

Hours of Business—From 10 a.m., to 3 p.m.

COMMERCIAL BANK OF NEWFOUNDLAND.

Directors—Stephen Rendell, John Bowring, John B. McLea, Frederick J. Wyatt, James Goodfellow.

Robert Brown, Manager. Peter P. LeMessurier, Teller. William

Walsh, Clerk. William B. Dryer, Clerk and Messenger. F. B. T. Carter, Q.C., Solicitor.

Discount Days—Tuesdays and Fridays, from 12½ to 1½ o'clock.

Hours of Business—From 10 a.m., to 3 p.m.

Notaries Public.

St. John's—Hon George H. Emerson, Hon Hugh W. Hoyles, Robert Prowse, George F. Bown, Frederick B. T. Carter, Robert R. W. Lilly, Hon Edward Morris, George J. Hogsett, William H. Mare, Matthew W. Walbank, Thomas J. Kough, William V. White-way, Hon Nicholas Stabb, Matthew H. Warren, Hon Robert J. Pin-sent, D. W. Prowse, Richard B. Holden, Samuel G. Archibald, John B. Bulley, Prescott Emerson.

Outports—Harbor Grace—John Hayward, Andrew Drysdale, Henry A. Clift, Lewis W. Emerson. Carbonear—Henry C. Watts. Twillingate—John Peyton. Brigus—William S. Mills. Bay Rob-erts—George W. R. Hierlihy. Lamaline—Clement Benning. Burin—Francis Berteau.

Foreign Consulates.

United States of America—Convers O. Leach, Consul for New-foundland.

Kingdom of Spain—Don Hipolito de Uriarte, Consul of New-foundland. Vice-Consuls—Charles F. Ancell, St. John's; T. Harri-son Ridley, Harbour Grace. Consular Agents—John Peyton, Twil-lingate; James L. Noonan, Greenspond; Israel McNeil, Cape Charles; Nicholas Payne, Dead Island; William Junott, Long Is-land; Dr. Hay Findlater, Fogo; Gilbert Humphrey Cole, Trinity.

Kingdom of Portugal—Charles F. Bennett, Consul General for Newfoundland. Vice-Consuls—Thomas R. Smith, St. John's; John Munn, Harbour Grace; William Junott, Burin; Charles Ed-monds, Twillingate and Fogo; T. Howe, Harbor Breton and Gaultois.

Kingdom of Prussia—Robert Prowse, Consul for St. John's; D. W. Prowse, Consular Agent.

Hamburgh—Robert Prowse, Consul; D. W. Prowse, Consular Agent.

Empire of France—J. C. Toussaint, Vice-Consul for New-foundland.

Kingdom of Italy—Horace le Boutillier, Consul for New-foundland.

Kingdom of Denmark—John Kent, Consul for Newfoundland.

QUEEN'S PRINTER.

John Collier Withers, Esquire.

Military Establishment.

Commanding the Troops—Colonel Fitz William Walker, Royal Canadian Rifles.

Garrison Staff—Fort Adjutant, Lieut. W. Gillmor, Royal Canadian Rifles. Acting Garrison Chaplains—Rev. T. M. Wood, Episcopalian; Rev. J. O'Donnell, Roman Catholic; Rev. D. MacRea, Presbyterian. Garrison Sergt. Major and Staff Clerk, M. Gilligan.

Royal Engineer Department—Commanding Royal Engineer, Capt. T. A. L. Murray. Clerk of Works, W. Pearse. Clerk, (temporary) L. Hanmer. Office Messenger, Pensioner G. Clarke.

Commissariat Department—Assistant Commissary General, H. Moore. Assistant Store-keeper and Issuer, J. Devlin. Clerk (temporary), C. F. Withell.

Military Store and Barrack Departments—Assistant Superintendent of Stores and Acting Barrack Master, J. Tunbridge. Deputy Assistant Superintendent of Stores, N. Hanmer. Barrack Sergeants, H. Hawkins, P. O'Connor. Storehouse-man, F. Scott. Warder, W. Hammond. Wharfinger, (Queen's Wharf,) Pensioner W. Francis. Office Messenger, Pensioner A. Devanna.

Royal Artillery, 8th Battery, 10th Brigade—Captain C. Wright, Commanding. Lieutenants, D. N. Taylor, C. J. M. Prother. Assistant Surgeon, A. L. Rickards. District Clerk, G. Scarlet.

Detachment Royal Canadian Rifles—Colonel F. Walker, Commanding. Captains, J. F. Campbell, E. Whyte. Lieutenants, W. Gillmor, W. Cavanagh, T. H. S. Donovan. Ensign, W. E. Harness. Assistant Surgeon, L. O. Patterson, in medical charge of Troops. Acting Pay Master, W. Cavanagh. Corps of Armourers, Sergt. F. W. Kilpatrick. Army Hospital Corps, Sergt. J. Ansell.

Posts and Works—St. John's, (North Side)—Forts Townshend and William, Signal Hill, (including Barracks at these posts) Storehouses, Magazine, and Armoury; Queen's, Waldegrave, Chain Rock, and Quidi Vidi Batteries; Military Hospital; Engineer House, Office, Workshops and Yard, Commissariat House, Office, Fuel Yard, and Garrison Bakery; Military Store Houses, Yard, and Offices; Queen's Wharf, Engineer, Commissariat, and Military Store Depôts; South Side, St. John's—Fort Amherst, and Magazine.

A Gun is fired daily from the Queen's Battery as follows:—

At 12 o'clock Noon, throughout the year. From the 1st of May to the 30th September, at 9 p.m. From the 1st of October, to the 30th April, at 8.30 p.m.

Fort Amherst fires a Fog Gun every hour, from Sun rise to Sun set, during foggy weather. Likewise, two Guns for Vessels when in distress at Sea.

When Practice is carried on by the Royal Artillery, a Flag hoisted as a signal at Fort Amherst.

Newfoundland Rifle Volunteers.

Commander-in-Chief—His Excellency ANTHONY MUSGRAVE,
ESQUIRE, Governor, &c., &c.

Deputy-Assistant-Adjutant-General—Captain W. J. Coen, Unat-
tached, H. P. late 14th Foot.

SAINT JOHN'S VOLUNTEER RIFLE BATTALION.

No. 1 ("Prince of Wales") Company—Captain, H. K. Dickinson.
Lieutenant, Nicholas Mudge. Ensign, George T. Rendell.

No. 2 ("Queen's") Company—Captain, Matthew W. Walbank.
Lieutenant, Thomas R. Smith. Ensign, John B. McLea.

No. 3 ("Victoria") Company—Captain, William B. Bowring.
Lieutenant, Thomas R. Job. Ensign, ———.

No. 4 ("Terra Nova") Company—Captain, Henry Renouf.
Lieutenant, ———. Ensign, Robert J. Parsons, jr.

Adjutant—Lieutenant Robert Dicks (No. 3 Company.)

Surgeons—James N. Fraser, M.D.; William C. Simms, M.D.

CONCEPTION BAY.

No. 1 (Harbor Grace) Volunteer Rifle Company—Captain, John
Hayward. Lieutenant, Henry T. Moore. Ensign, Robert S. Munn.

Naval.

Commander-in-Chief on the West India and North American
Station—Vice-Admiral Sir James Hope, K.C.B.

Outfit for the Seal Fishery, 1864.

	Vessels.	Tons.	Men.
St. John's	41	5246	2277
Harbor Grace	49	6136	2480
Carbonear	27	3295	1346
Brigus	34	4097	1890
Bay Roberts	17	2206	981
Trinity	6	706	310
Catalina	9	1082	561
Heart's Content	2	377	115
Greenspond	17	1597	637
	—	—	—
	202	24742	10597

Ships Owned and Registered in Newfoundland.

Number of Vessels	1,429
Tonnage	89,603

Table of Customs Duties.

Articles	Stg.	
	£ s d	\$ cts
Ale, Porter, Cider, and Perry, viz :		
In Bottles, the dozen of 2 gallons	0 1 0	24
In Casks, the gallon	0 0 4	8
Bacon, Hams, Smoked Beef and Sausages, the cwt	0 8 3	1 98
Beef, salted and cured, the barrel of 200 lbs	0 2 0	48
	and 10 per cent thereon.	
Biscuit or Bread, the cwt	0 0 3	6
	and 10 per cent thereon.	
Butter, the cwt	0 3 0	72
	and 10 per cent thereon.	
Cheese, the cwt	0 5 6	1 32
Chocolate and Cocoa, the lb	0 0 1	2
	and 10 per cent thereon.	
Cigars, the M.	0 11 0	2 64
Coffee, the lb	0 0 1	2
	and 10 per cent thereon.	
Coals, other than such as come under the Provi- sions of the Reciprocity Treaty, the ton	0 1 0	24
Feathers and Feather Beds, the lb	0 0 1	2
	and 10 per cent thereon.	
Flour, the brl	0 1 6	36
	and 10 per cent thereon.	
Fruits, dried, the lb	0 0 1½	3
Fruits, other descriptions, the £100	11 0 0	
Confectionary, the cwt	0 13 9	3 30
Packages in which Dry Goods are imported, 11 per cent ad valorem		
Molasses, the gallon	0 0 2½	5
Oatmeal and Indian Meal, the brl	0 0 6	12
	and 10 per cent thereon.	
Pork, the brl of 200 lbs	0 3 0	72
	and ten per cent thereon.	
Salt, the ton	0 0 6	12
Shooks and Staves, manufactured or dress- ed, the £100	11 0 0	11 pct
Spirits—Brandy, Gin, Whiskey, or other Spirits not herein defined or enumerated and not exceeding the strength of proof by Sykes's Hydrometer, and so in pro- portion for any greater strength than the strength of proof, the gallon	0 5 0	1 20
All Spirits of greater strength than forty- three over proof shall be deemed to be Undefined Spirits and subject to duty accordingly.		
Cordials, Shrub and other Spirits, being sweetened or mixed so that the degree of strength cannot be ascertained as aforesaid, the gallon	0 3 0	72

	£	s	d	\$	cts
Rum, not exceeding the strength of proof by Sykes's Hydrometer, and so in proportion for any greater strength than the strength of proof, the gallon	0	2	6		60
Sugar, Loaf and Refined, the cwt	0	12	0	2	88
and 10 per cent thereon.					
Unrefined, the cwt	0	8	3	1	98
Bastard, the cwt	0	10	0	2	40
Souchong, Congou and Bohea Tea, the lb	0	0	4		8
All other Tea, the lb	0	0	5		10
Tobacco, manufactured and leaf, the lb	0	0	3		6
and 10 per cent thereon.					
Tobacco Stems, the cwt	0	2	0		48
and 10 per cent thereon.					
Vinegar, the gallon	0	0	3		6
and 10 per cent thereon.					
Wines of all kinds, in bottles (except Claret,) the gallon	0	6	0	1	44
Port, Madeira, Hock, Burgundy, in wood or other vessels, not being bottles, the gal.	0	5	0	1	20
Sherry, 12½ per cent ad valorem, and, the gallon	0	3	0		72
Claret, in wood or bottles, the gallon	0	2	6		60
and 12½ per cent ad valorem.					
All other Wines, the gallon	0	2	6		60
and 12½ per cent ad valorem.					
Anchors, Barley and Oats, Canvass, Cordage and Cables, Copper and Composition Metal for Ships, viz:—Sheathing, Bar Bolt, and Nails; Corks and Corkwood, Fishing Tackle, Indian Corn, Iron, viz:—Bar, Bolt, Sheathing and Sheet, Wrought Nails; Medicines, Oakum, Pease, Pitch, Tar, Turpentine and Rosin Poultry and Fresh Meat, the £100	5	10	0		
Goods, Wares and Merchandize, not otherwise enumerated, described or charged with duty in this Act, and not otherwise exempt, the £100	11	0	0		
Fish, salted, dried or pickled, for every cwt imported	0	5	6	1	32
LOCAL DISTILLATION.					
Rum, not exceeding the strength of proof by Sykes's Hydrometer, and so in proportion for any greater strength than the strength of proof, the gallon	0	1	8		40
Brandy, Gin, or other Spirits, not herein defined or enumerated, not exceeding the strength of proof by Sykes's Hydrometer, and so in proportion for any greater strength than the strength of proof, the gallon	0	2	0		48

Pri
 o
 Pri
 Coi
 Pla
 Spe
 Wo
 A
 Ma
 Arr
 F
 Pas
 a
 I
 Ref
 See
 Veg
 Arti
 Dor
 b
 Cot
 Sulph
 Mat
 a
 u
 in
 a
 fo
 in
 TAB
 Gra
 Ani
 Fre
 Cot
 Und
 Fish
 Pro
 Pou
 Hid
 Stor
 But
 Hor
 Ore
 Pit
 Tim
 m
 Fir
 Pel
 Gyp
 Hev
 Dye
 Unn

THE NEWFOUNDLAND ALMANAC.

TABLE OF EXEMPTIONS.

Printing Presses, Printing Paper, (Royal and Demy) Types, and all other Printing Materials
Printed Books, Pamphlets, Maps and Charts
Coin and Bullion; Hemp, Flax, Tow
Plants, Trees and Shrubs
Specimens illustrative of Natural History
Works of Art, viz :—Engravings, Paintings, Statuary and all other
Articles imported for Religious purposes and not intended for sale
Manures of all kinds
Arms, Clothing, and Provisions for Her Majesty's Land and Sea Forces
Passengers' Baggage, Household Furniture, and Working Tools and Implements used and in the use of Persons arriving in this Island
Refuse of Rice
Seeds for Agricultural purposes
Vegetables of all sorts; Animals of all kinds
Articles of every description imported for the use of the Governor
Donations of Clothing specially imported for distribution gratuitously by any Charitable Society
Cotton Yarn, Pig Iron, Coke
Sulphuric Acid, when used for the Manufacture of Manure
Materials for Sheathing the bottoms of Vessels, such as Zinc, Copper and Metal, together with Nails, Paper or Felt, which may be used under the same, shall be free and exempt from duty when imported in the Vessel on which they are intended to be used, and entered as Ship's Stores; such Sheathing and Materials to be so used before the Ship again leaves port, or the same to be entered for duty in the ordinary way.

TABLE OF EXEMPTIONS UNDER THE TREATY WITH THE UNITED STATES.

Grain, Flour, and Breadstuffs of all kinds
Animals of all kinds
Fresh, smoked, and salted Meats
Cotton, Wool, Seeds and Vegetables
Undried Fruits, Dried Fruits
Fish of all kinds
Products of Fish, and all other creatures living in the water
Poultry, Eggs
Hides, Furs, Skins or Tails—undressed
Stone or Marble, in its crude or unwrought state; Slate
Butter, Cheese, Tallow, Lard
Horns, Manures
Ores of Metals of all kinds; Coals
Pitch, Tar, Turpentine; Ashes
Timber and Lumber of all kinds, round, hewed and sawed—unmanufactured in whole or in part
Firewood, Plants, Shrubs and Trees
Pelts, Wool; Fish Oil; Rice, Broom Corn and Bark
Gypsum—ground or unground
Hewn or wrought or unwrought Burr or Grindstones
Dye Stuffs; Flax, Hemp, Tow—unmanufactured
Unmanufactured Tobacco; Rags

So long as the said Treaty between Great Britain and the United States of America, in the said recited Act mentioned, shall remain in force in this Island.

And similar Articles, (except Coals) being the growth, produce, and manufacture of the United Kingdom, British North American Provinces, or of the Island of Prince Edward, or the Channel Islands, shall be admitted Duty Free, notwithstanding any law to the contrary.

Biscuit, the produce of the United Kingdom, the Channel Islands, and the North American Provinces, imported direct from these places, shall be admitted Duty Free, notwithstanding any law to the contrary.

It shall not be lawful for any Importer of Fish, salted, dried, or pickled, not exempted from duty by any of the provisions of this Act, to Warehouse the same in any of the ports of this Colony or its dependencies, without the payment of the Duty hereinbefore imposed; and the provisions of any Act of this Colony with regard to the Warehousing of Goods on the first Entry thereof, or to the allowance of drawbacks upon exportation, shall not in either case apply, or be construed to apply, to such Fish.

All Yachts sailing under Warrant of the Lords of the Admiralty, or belonging to the Royal Yacht Club, shall be exempted, on view of the said Warrant, from payment of all Local Duties whatsoever.

Value of Imports and Exports

From the Years 1854 to 1863.

	Imports.	Exports.		Imports.	Exports.
1854	£ 964,527	£1,019,572	1859	£1,324,136	£1,357,113
1855	1,152,804	1,142,212	1860	1,254,128	1,271,712
1856	1,271,604	1,338,797	1861	1,152,857	1,092,551
1857	1,413,432	1,651,171	1862	1,007,082	1,171,723
1858	1,72,862	1,318,836	1863	1,077,272	1,233,353

Table

Shewing the Quantity and Value of Fish (dried) exported from Newfoundland for the years 1840 to 1863, inclusive.

Yrs.	Qtls.	Value.	Yrs.	Qtls.	Value.
1840	915,795	£576,245	1852	973,731	£463,741
1841	1,009,725	605,014	1853	922,718	561,100
1842	1,007,980	561,950	1854	774,118	517,818
1843	936,202	532,194	1855	1,107,388	680,283
1844	852,162	482,480	1856	1,268,334	769,124
1845	1,000,333	536,994	1857	1,392,322	1,006,129
1846	879,005		1858	1,038,089	765,101
1847	837,973	489,940	1859	1,105,793	894,966
1848	920,363	491,924	1860	1,138,544	846,238
1849	1,175,167	588,728	1861	1,021,720	668,263
1850	1,089,182	532,969	1862	1,074,289	752,002
1851	1,017,674	493,014	1863	811,777	781,275

Total Value

In Sterling, of the Imports and Exports of the Colony of Newfoundland, from and to each Country, in the Year 1863.

<i>Countries.</i>	<i>Imports therefrom.</i>	<i>Exports thereto.</i>
United Kingdom	£442,060	£399,712
British Colonies, viz:		
Jersey	8,878	5,653
Canada	42,223	8,449
Nova Scotia	107,706	34,980
New Brunswick	3,860	2,872
F. E. Island	9,315	1,716
British W. India	13,988	66,705
Gibraltar		2,535
Foreign Countries, viz.:		
Hans Towns	52,352	
Spain	9,109	302,134
Portugal	6,972	133,604
Italian States	207	30,051
Sicily	60	
United States	344,044	60,043
Foreign W. India	33,812	15,658
Brazil		168,941
St. Peters	2,686	300
Total	1,077,272	£1,233,353

Revenue and Expenditure

Of the Government of Newfoundland from 1854 to 1863.

	Revenue.	Expenditure.		Revenue.	Expenditure.
1854	81,007 6 10	77,492 15 9	1859	124,799 2 6	114,599 1 3
1855	126,448 12 4	120,926 3 8	1860	133,608 1 7	120,728 4 2
1856	118,831 15 8	105,845 16 5	1861	90,043 10 7	126,753 5 9
1857	149,324 9 11	116,748 13 0	1862	116,929 17 1	138,058 17 6
1858	141,128 4 3	173,965 8 9	1863	113,034 1 9	115,225 4 6

ST. JOHN'S AND NEWFOUNDLAND AUXILIARY BIBLE SOCIETY.

His Excellency the Governor, Patron. Hon. Nicholas Stabb, President. Hon. Hugh W. Hoyles, Stephen Rendell, William Boyd, James N. Fraser, M.D., James Pitts, Vice-Presidents. Robert Brown, Treasurer. Rev. Moses Harvey and John B. Bulley, Secretaries. Committee—Rev. P. Prestwood, Rev. Donald McRae, Rev. John Maze, Rev. A. W. Turner, Hon. P. G. Tessier, Hon. J. Bemister, Hon. J. O. Fraser, N. Mudge, Dr. Winter, James Bayly, Joseph Woods, Richard Neyle, E. L. Jarvis, J. Seaton, John Woods, A. Whiteford, G. Browning, R. Braae, J. Baird, R. Grieve, J. B. McLea, T. Job, David Watson.

Names of Districts.	Number of Inhabitants.	No. of Males	No. of Females	No. of Various Religious Denominations							
				Church of England.	Catholics	Wesleyans	Kirk of Scotland	Free Kirk	Congregation- alists.	Other Denominations	
St. John's, East	17352	8757	3595	3493	11867	1303	208	256	225		
St. John's, West	13124	6701	6423	2162	10033	579	82	169	92		7
Harbor Maine (Conception Bay)	5386	2789	2597	1160	4153	71	2				
Port-de-Grace ditto	6489	3349	3140	2726	1637	2112	1		13		
Harbor Grace ditto	10067	5285	4782	5490	3390	1112	2	73			
Carbonear ditto	5233	2675	2558	791	2582	1859		1			
Bay-de-Verds ditto	6221	3274	2947	446	1583	4191		1			
Trinity Bay	10736	5618	5118	6016	3460	3460		4	2		1
Bonavista	8850	4705	4145	5714	2030	1083		9	14		
Twillingate and Fogo	9717	5157	4550	6232	1442	2036		7			
Ferryland	5228	2776	2452	127	5093	8					
Placentia and St. Mary's	8334	4434	3900	966	7156	208	4				7
Burin	5529	3005	2524	1356	2354	1810	1		1		29
Fortune Bay	3492	1994	1499	2787	647	30					
Burgeo and LaPoile	3545	1961	1584	3172	89	282	2				
Totals	119304	62490	56814	42638	55309	20144	302	520	347		44
French Shore	3334	1778	1556	1647	1586			16			

The Census of the Labrador was cursorily taken by the late Superintendent of Fisheries (James L. Prendergast, Esquire,) in 1856 and 1857, but it is not sufficiently correct or full to form a part of the foregoing Returns. The number of permanent residents, as given by that gentleman, from L'Anse Sablon to Sandwich Bay, both inclusive, including Belle Isle, is 1650, of whom 1331 are Protestants and 319 Catholics.

Fire, Life and Marine Insurance Companies.

Phoenix Fire Insurance Company of London—Established 1782. Agents for Newfoundland, W. & G. Rendell, St. John's.

Agents for Lloyds—Brooking & Co., St. John's. Ridley & Sons, Harbor Grace. Philip DeQuetteville, Labrador. John P. Frecker, St. Pierre.

Colonial Life Assurance Company—Registered and Empowered under Act of Parliament 7 and 8 Vic. Cap. 110. Capital, £500,000. St. John's Branch, Hon. L. O'Brien, W. H. Mare, ———, Directors; Agent and Secretary, Frederick J. Wyatt.

Alliance British and Foreign Life and Fire Assurance Company, London. Capital, £5,000,000 sterling. Brooking & Co., Agents for Newfoundland.

The Royal Insurance Company, for Fire, Life and Annuities.—Royal Insurance Buildings, Liverpool; and 29 Lombard Street, London. Capital, £2,000,000 sterling. Job, Brothers & Co., Agents Newfoundland Branch.

Liverpool and London Fire and Life Insurance Company—Established 1836. Capital, £2,000,000 sterling. Invested Fund, £1,417,808. Income, £570,000. Bowring, Brothers, Agents for Newfoundland.

Britannia Life Assurance Office, London—St. John's Branch, D. W. Prowse, Agent.

Queen Insurance Company of Liverpool and London, for Fire and Life. Capital, £2,000,000 sterling. General Agent for Newfoundland, D. W. Prowse. Sub-Agent for Conception Bay, John Hayward.

Newfoundland Marine Assurance Company. Capital, £25,000. Directors—Alan Goodridge, President; Hon. James S. Clift, Hon. P. G. Tessier, Robert Thorburn, William B. Bowring, Robert Grieve, James Goodfellow. Edward L. Jarvis, Secretary. W. Keligrew, Surveyor.

International Life Assurance Society, of London. Capital, £500,000 sterling, in addition to about £100,000 currency, of reserved profits. Directors—Hon. Hugh W. Hoyles, Chairman; Charles F. Bennett, Ewen Stabb, Ambrose Shea. Hon. Nicholas Stabb, General Agent for Newfoundland.

Imperial Fire Insurance Company, of London—Established 1803. Capital subscribed and invested, £1,600,000. Agent for St. John's, Thomas G. Morry.

Star Life Assurance Society, Chief Office, 48, Moorgate Street, London. St. John's—W. C. Simms, M.D., Medical Referee. Agent for Newfoundland, Joseph Woods.

Baltimore Underwriters, Boston Underwriters, Two've Offices.—Boards of Underwriters of the Cities of New York and Philadelphia.—Lamar Insurance Company, New York. Capital, \$300,000.—Continental Insurance Company. Capital, \$500,000—Surplus \$616,674.—Market Insurance Company, New York. Capital and Assets, \$283,260.—Howard Insurance Company, New York —

American Lloyd's. Attorney and Agent for Newfoundland, **W. H. Newman.** Represented by **C. T. Ryland.**

Liverpool Underwriters' Association—**Ridley & Sons,** Harbour Grace, Agents.

Life Association of Scotland. Local Directors—**H. K. Dickinson,** Hon. **James Cormack,** **Robert Grieve.** Dr. **W. C. Simms,** Medical Officer. **E. L. Jarvis,** Secretary and Agent.

Northern Assurance Company, of London.—Established in 1836. Capital, £2,000,000 sterling; accumulated Funds, upwards of £700,000; annual Revenue, over £230,000. Agent for Newfoundland, **Augustus O. Hayward.**

North British and Mercantile Insurance Company.—Established 1809. Incorporated by Royal Charter and Special Acts of Parliament. Agent for Newfoundland, **Ambrose Shea.**

London and Lancashire Fire and Life Insurance Companies.—Fire Capital, £1,000,000; Life Capital, £100,000. Agent for Newfoundland, **Matthew H. Warren.**

Canada Life Assurance Company.—Established 1847. Capital, \$1,000,000. Dr. **J. N. Fraser,** Medical Adviser. Agent at St. John's Newfoundland, **James Bayly.**

Commercial Union Assurance Society, 19, Cornhill, London. Marine Branch,—5 Royal Exchange Avenue. Capital, £2,500,000. Agent, St. John's, **Ewen Stabb.**

Albert Medical & Family Endowment Life Assurance Company, with which is combined the **Kent Mutual Assurance Society, London.** Established 1838. Bankers, **Commercial Bank of Newfoundland.**

Mutual Marine Insurance Club of Conception Bay—**John Fitzgerald,** Secretary and Treasurer.

Mutual Insurance Society of Brigus, Conception Bay—**Jonathan Percy,** Treasurer and Secretary.

Joint Stock Companies, Public Societies, &c.

New York, Newfoundland, and London Telegraph Company—Directors in New York, **Peter Cooper,** **Moses Taylor,** **Cyrus W. Field,** **Marshal O'Boberts,** **Wilson G. Hunt.**

Peter Cooper, President. **Cyrus W. Field,** Vice-President.—**Moses Taylor,** Treasurer. **David D. Field,** Counsel. **Alexander M. McKay,** Local Manager, St. John's, and Superintendent.

St. John's Gas Light Company—Directors, **Stephen Rendell,** President; **John Bowring,** Vice-President; **J. B. Wood,** Hon. **Richard O'Dwyer,** Hon. **Laurence O'Brien,** **David Sclater,** **Robert H. Prowse.** **William F. Rennie,** Secretary.

General Water Company, St. John's.—Incorporated 1859. Directors—**Ambrose Shea,** President; Hon. **Laurence O'Brien,** **Ewen Stabb,** (Government Director.) Hon. **Hugh W. Hoyles, Q.C.,** Solicitor. **Pierce M. Barron,** Secretary. **John T. Nevill,** Assessor of Property. **Robert J. Pinsent,** Collector of Rates and Assessments.

Harbor Grace Water Company.—William H. Ridley, President; Henry T. Moore, Secretary; R. Walsh, John Munn, John Hayward, and G. Rutherford, Directors.

St. John's Athenæum—Hon. Nicholas Stabb, President. William Boyd and Hon. R. J. Pinsent, Vice-Presidents. E. L. Moore, Curator of Museum. F. R. Page, Curator of Apparatus. D. W. Prowse, Secretary. E. B. Moore, Treasurer, Librarian and Superintendent of Rooms. Committee—Hon. R. Kent, John Bowring, T. R. Smith, James Baird, John Meehan, A. Scott, H. Bevins, G. Lash, C. T. Ryland. Commercial Bank of Newfoundland, Bankers.

Catholic Institute—Right. Rev. Dr. Mullock, Patron. Rev. R. Howley, D.D., President. Hon. E. Morris, Vice-President. Francis Blundoo, Secretary. Richard Walsh, Treasurer. Richard Rafus, Librarian. Council—Rev. J. Vereker, C. Reddin, J. Casey, Robert O'Mara, M. Fenelon, R. J. Kent, E. M. J. Delaney.

Masonic—Hon. James S. Clift, D. P. G. Master. John G. James, P. G. Secretary.

St. John's Lodge, No. 579—Nicholas S. Stabb, W. M. George G. Geddes, S. W. Thomas McKenzie, J. W. George Lash, Treasurer. Henry T. B. Wood, Secretary. Rev. Donald McKee, Chaplain. Henry Cook, S. D. William Pearce, J. D. John Mabin, George Dicks, Stewards. Adam Martin, I. G. John Wilkinson, Tyler. Meetings on the first Friday in every month, at Masonic Hall, British Square.

Avalon Lodge, No. 1078—W. V. Whiteway, W. M. A. F. Sheron, S. W. Adam Scott, J. W. J. F. Chisholm, Treasurer. L. N. Gill, Secretary. Thomas Soper, S. D. Henry Snow, J. D. George Rendell, I. G. J. Alexander and William Carnell, Stewards. John Wilkinson, Tyler. Meetings on the first Tuesday in every month, at Masonic Hall, British Square.

Agricultural Society—His Excellency the Governor, Patron. Hon. Judge Robinson, President. Hon. Judge Little, W. W. Walbank, Hon. R. J. Pinsent, Vice-Presidents. Joseph Crowdy, Treasurer. W. F. Rennie, Secretary.

St. John's Floral and Horticultural Society—President, Thomas Bennett. Treasurer, Robert Brown. Secretary, John C. Withers.

Harbor Grace Agricultural and Horticultural Society—Henry T. Moore, President. J. J. Roddick and R. Walsh, Vice-Presidents. ———, Treasurer. H. Clift, Secretary.

Newfoundland Fishermen's Society—Charles Power, President. William Coady, Vice-President. Patrick Ryan, Assistant Vice-President. James McLaughlan, Treasurer. Thomas Jackman, Second Treasurer. Thomas Duff, Third Treasurer. Laurence Barron, Secretary. Michael Costigan, Assistant Secretary.

Fishermen's Society, Heart's Content—Rev. G. Gardner, President. Richard Penny and Charles Rendell, Vice-Presidents. W. H. Thompson, Treasurer. William Swansborough, Secretary. Henry Lind, Assistant Treasurer. James H. Moore, Assistant Secretary. John Ryall, Medical Adviser.

Floating Dry Dock Company—S. Rendell, President. L. Tessier, P. Feehan, J. Goodfellow, J. McLoughlan, R. Grieve, W. Bowring, Directors.

Vail's Joint Stock Company for Ship Biscuit Baking—S. Rendell, President. W. Grieve, R. L. Muir, N. R. Vail, J. Bowring, Directors. William Wheatley, Manager.

St. John's Phoenix Volunteer Fire Company—Francis Boggin, First Director. William Mullooney, Second Director. Patrick Reardon, Treasurer. Philip Hally, Secretary.

Cathedral Fire Brigade—William McGrath, First Director. Thomas Brine, Second Director. Charles Gamble, Treasurer. George Thomas, Secretary.

Harbor Grace Volunteer Fire Company—Michael Hartery, Captain. 1st Section—John Strathie, First Lieutenant; Edward Vass, Second Lieutenant. 2nd Section—William Tapp, First Lieutenant; Michael Jones, Second Lieutenant. 3rd Section—John Keefe, First Lieutenant; John Barry, Second Lieutenant. P. Walsh, Treasurer. J. Fitzgerald, Secretary.

Manufacturers, Mills, &c., St. John's—2 Corn Mills, 2 Saw Mills, 1 Bone Mill, 1 Gas Manufactory, 2 Iron Foundries, 2 Distilleries, 1 Brewery, 1 Water Works, 4 Bakeries, (by Machinery) 1 Patent Slip, 1 Floating Dock, 1 Oil Manufactory, 1 Fish Manure Manufactory. Brigus—1 Corn Mill. Harbor Grace—1 Corn Mill, 1 Gas Manufactory, 1 Water Works. Exploits Bay—2 Saw Mills. Middle Arm of Green Bay—1 Saw Mill. Exploits (Burnt Island)—2 Saw Mills. Hall's Bay—2 Saw Mills. Trinity Bay—5 Saw Mills.

Benevolent and Charitable Societies.

Benevolent Irish Society—Founded 1806. The Right Rev. Dr. Mallock, Patron. Hon. L. O'Brien, Vice-Patron. Hon. Edward Morris, President. ———, Vice-President. Thomas S. Dwyer, First Assistant. John Stundon, jr., Second Assistant. John Power, Treasurer. Robert J. Kent, Secretary. William Doutney, Chairman Orphan Asylum. Michael Rice, Chairman of Charity. John Rawlins, Chairman of Review and Correspondence. Henry Born, Secretary Orphan Asylum School.

Church of England Asylum for Widows and Orphans—His Excellency the Governor, Patron. The Right Rev. Dr. Feild, Visitor and President. The Venerable the Archdeacon, Rev. T. M. Wood, Vice-Presidents. The Right Rev. the Visitor and President (*ex officio*), Henry K. Dickinson, John Winter, M.D., Trustees. Hon. James S. Clift, Treasurer. Rev. G. M. Johnson, Honorary Secretary. Charles Crowdy, M.D., Physician. Committee—Philip Hutchins, John Tunbridge, John H. Warren, Rev. John Pearson, Judge Robinson, Hon. H. W. Hoyles, W. H. Mare, John Hogsett, Kenneth McLara, John Bowring.

St. John's Factory—Honorable Laurence O'Brien; Thomas Glen, James J. Rogerson, Edmund Hanrahan, Trustees.

St. George's Society—William V. Whiteway, President. Hon. James S. Clift, and John Bowring, Vice-Presidents. Henry T. Wood, Treasurer. A. O. Hayward, Secretary. Committee of Charity—The above-named officers, and the Revs. T. M. Wood, P. Prestwood, G. M. Johnson; Geo. T. Rendell, George F. Bown, Henry Winton, Charles R. Ayre, Thomas R. Smith, F. J. Wyatt, J. C. Withers. Physician—Dr. H. H. Stabb.

St. Andrew's Society—Robert Grieve, President. John B. McLea, Vice-President. James Baird, Treasurer. R. Stott, M.A. Secretary. Committee of Charity—Charles Rankin, Robert Blackwood, and Robert Peace. Medical Advisers, Drs. McKen and Fraser.

Newfoundland British Society—Samuel Carnell, President. James Furniss, Vice-President. Henry W. Seymour, Treasurer. William H. Charles, Secretary.

British Society of Conception Bay—Henry T. Moore, President. James Hippsley, Vice-President. George G. Rutherford, Treasurer. James Godden, Secretary.

Society of St. Vincent de Paul— — — —, President. Valentine Merchant, Vice-President. John Rawlins, Assistant Vice-President. Laurence Maccassey, Treasurer. William Doutney, Secretary.

Grand Division of Sons of Temperance—L. T. Chancey, G.W.P. G. Bishop, (Burin) G.W.A. E. Brace. G. Scribe. J. Rooney, G. Treasurer. J. English, G. Chaplain. J. Hughes, G. Con. D. W. Morison, G. Sen.

Deputy Grand Worthy Patriarchs in the Outports:—Edward Genge, Port-au-Basque, Division No. 38. George Robinson, Petites, Division No. 39, and Rose Blanche, Division No. 40. John Lake, Fortune, Division No 19. Jonathan Hickman, Grand Bank, Division No 9. Dr. Robert White, Trinity, Division No. 2. John Weare, Olive Branch Division (Burin) No: 1. Philip Pine, Ray of Hope Division (Burin) No 12. George Bishop, Star of the East Division (Burin) No. 7. J. T. W. Crosby, North Star Division, Twillingate, No 15.

Free St. Andrew's Total Abstinence Association—President, Rev. M. Harvey.

Total Abstinence and Benefit Society—Charles Kickham, President. Patrick Hynes, Vice-President. W. Ferguson, First Assistant.—J. Kavanagh, Second Assistant. William McGrath, First Treasurer. Patrick Coonan, Second Treasurer. Patrick Reardon, Secretary.

Mechanics' Society—Valentine Merchant, President. John Power Vice-President. William L. Mallowney, First Assistant. Richard Hanley, Second Assistant. William McGrath, First Treasurer. John Mockler, Second Treasurer. William Kelly, Third Treasurer. John Trelegan, Secretary. Henry Shea, M.D., Physician.

Shipwrights' Benefit Society—Garrett Dooley, President. Thomas Soper, 1st Vice-President. Joseph Raines, 2nd Vice-President. Edward Knight, Treasurer. Jeremiah Hickey, Secretary.

Dorcas Society, St. John's—Mrs. Finlay, President. Mrs. Bemister, Treasurer. Mrs. Christopher Brown, Secretary. Mrs. Smith,

Mrs. Rendell, Mrs. E. Smith, Mrs. Macpherson, Collectors. Mrs. Brown, Mrs. Reid, Dispensers.

Dorcas Society, Harbor Grace—Mrs. Drysdale, President and Treasurer.

Dorcas Society, Carbonear— — —, President and Treasurer.

Benevolent Irish Society, Conception Bay—Founded in 1814.—The Right Rev. Dr. Dalton, Patron. John Fitzgerald, President: Patrick Devereux, Vice-President. Andrew T. Drysdale, First Assistant. William Howlett, Second Assistant. Robert Walsh, Treasurer. James Bolger, Secretary. John Byrne, Chairman of Charity. Patrick Walsh, Chairman of Review and Correspondence.

Trinity Benefit Club—Instituted 1838.—Patrick Murphy, President. Dr. White, Vice-President. W. D. Cross, Treasurer. James Collis, Secretary.

Newspapers Published in the Colony.

Courier—Published every Wednesday and Saturday morning.

Daily News—Published every morning, Sundays excepted.

Day-Book—Published ever morning, Sundays and Holidays excepted.

Newfoundlander—Published every Monday and Thursday morning.

Newfoundland Express—Published every Tuesday, Thursday and Saturday morning.

Public Ledger—Published every Tuesday and Friday morning.

Patriot—Published every Tuesday afternoon.

Royal Gazette—Published every Tuesday.

Standard (Harbor Grace)—Published every Wednesday morning.

Telegraph—Published every Wednesday morning.

Times—Published every Wednesday and Saturday morning.



The Royal Family.

ALEXANDRINA VICTORIA, by the Grace of God, of the United Kingdom of Great Britain and Ireland, Queen, only daughter and heir of the late Prince Edward, Duke of Kent, fourth son of King George III. Her Majesty was born at Kensington Palace, on the 24th May 1819; baptized on the 24th of June 1819; ascended the throne on the demise of her uncle, King William IV., 20th June 1837; proclaimed 21st June 1837; and crowned at Westminster, on the 28th June 1838. Her Majesty was married at St. James's Palace, on the 10th Feb. 1840, to her cousin, his late Royal Highness Francis-Albert-Augustus-Charles-Emmanuel, Duke of Saxe-

Prince of Coburg and Gotha, who died at Windsor Castle, on the 14th Dec. 1861. Children:—

Victoria-Adelaide-Mary-Louisa, *Princess Royal*, born 21st Nov. 1840; married 25th Jan. 1858, at the Chapel Royal, to His Royal Highness Prince Frederick-William-Nicholas-Charles of Prussia.

Albert-Edward, *Prince of Wales and Earl of Dublin*, born 9th Nov. 1841; married 10th March 1863, at Windsor, to Princess Alexandra, daughter of Prince Christian, of Denmark.

Alice-Maud-Wary, born 25th April 1843; married 1st July 1862; at Osborne, to His Royal Highness Prince Frederic-William-Louis of Hesse-Darmstadt.

Alfred-Ernest-Albert, born 6th August 1844.

Helena-Augusta-Victoria, born 25th May 1846.

Louisa-Caroline-Alberta, born 18th March 1848.

Arthur-William-Patrick-Albert, born 1st May 1850.

Leopold-George-Duncan-Albert, born 7th April 1853.

Beatrice-Mary-Victoria-Feodore, born 14th April 1857.

Her Majesty's Chief Officers of State.

THE CABINET.

First Lord of Treasury—Viscount Palmerston, K.G.

High Lord Chancellor—Lord Westbury.

President of the Council—Earl Granville, K.G.

Privy Seal—The Duke of Argyll, K.T.

Chancellor of the Exchequer—Right Hon. W. E. Gladstone.

Secretary of State for the Home Department—Sir George Grey.

Secretary of State for Foreign Department—Earl Russell, K.G.

Secretary of State for the Colonies—Right Hon. E. Cardwell.

War Secretary—Earl de Grey and Ripon.

Secretary of State for India and President of Indian Council—
Right Hon. Sir C. Wood, G.C.B.

First Lord of the Admiralty—The Duke of Somerset, K.G.

President of the Board of Trade—Right Hon. T. Milner Gibson.

Post Master General—Lord Stanley of Alderley.

Chancellor of the Duchy of Lancaster—Earl of Clarendon, K. G.

President of the Poor Law Board—Right Hon. Charles P. Villiers.

IRELAND.

Lord Lieutenant—Lord Wodehouse.

Lord Chancellor—Right Hon. M. Brady.

Chief Secretary—Right Hon. Sir Robert Peel, Bart.

Attorney General—Right Hon. Thomas O'Hagan

Solicitor General—J. A. Lawson, Esq.

Commander of the Forces—Gen. Sir George Brown, G.C.B.

Appendix—Post Office Department.

POST TOWNS.

Those marked thus * are Money Order Offices.

Name of Office	District.	Name of Postmaster
* Brigus.....	Port de Grave.....	Mrs. Stentafor
* Bonavista.....	Bonavista.....	John Lawrence
* Burin.....	Burin.....	Thomas Winter
* Burgeo.....	Burgeo and La Poile....	Francis Parsons
* Bay Bulls.....	Ferryland.....	Martin Williams
* Carbonear.....	Carbonear.....	Nicholas Nicholl
* Fogo.....	Fogo and Twillingate....	James Fitzgerald
Ferryland.....	Ferryland.....	John Morey
* Greenspond....	Bonavista.....	William Lang
* Harbor Grace...	Harbor Grace.....	Andrew Drysdale
* Harbor Breton..	Fortune Bay.....	Thomas Birkett
Little Placentia...	Placentia and St. Mary's	Alexander Burke
* Placentia.....	Placentia and St. Mary's	Miss Morris
* Twillingate.....	Fogo and Twillingate...	Joseph L. Pearce
* Trepassey.....	St. Mary's and Placentia	John Devereux
* Trinity.....	Trinity.....	Ann Cross
New Perlican....	Trinity.....	Francis Howell
La Poile.....	Burgeo and La Poile....	Thomas Read

WAY OFFICES.

Name of Office.	District.	Way Office Keeper.
Bay Roberts.....	Port de Grave.....	James Fitzgerald
Blackhead.....	Bay de Verds.....	William Butt
Bay de Verds.....	Bay de Verds.....	Elias Picco
Catalina.....	Trinity.....	John Jeans
Cats Cove.....	Harbor Main.....	Timothy O'Brien
Channel.....	Burgeo and La Poile....	
Fortune.....	Burin.....	Dr. Haddock
Grand Bank.....	Burin.....	Jonathan Hickman
Harbor Main.....	Harbor Main.....	Mrs. Brick
Hermitage.....	Fortune Bay.....	Richard Bradshaw
Hant's Harbor...	Trinity.....	Thomas Smith
Holyrood.....	Harbor Main.....	John Veitch
Island Cove.....	Harbor Grace.....	John Crane
Kings Cove.....	Bonavista.....	Michael Murphy
Lamaline.....	Burin.....	James Pitman
Oderin.....	Placentia and St. Mary's	James Murphy
Old Perlican....	Trinity.....	William Christian
Paradise.....	Placentia and St. Mary's	John Power
Port de Grave...	Port de Grave.....	Matthew O'Riley
Portugal Cove...	St. John's East.....	Margaret Dooley
Salmonier.....	St. Mary's and Placentia	John Hurley
St. Mary's.....	Placentia and St. Mary's	James Murphy
Topsail.....	Harbor Main.....	John Moyse

N
Adan
Amh
Amh
Apsey
Aqua
Admi
Angel
Arnol
Amos
Belle
Ballin
Broad
Blackh
Broad
Bacon
Burnt
Burnt
Bull C
Blow-m
Barene
Brigus
Bryant
Bishop
Beachy
Blow-m
Broad C
Blackh
Bay de
Boney
Bird Isl
Birchey
Barrow
Back H
Broom
Bloody
Bonavis
Bragg's
Burnt Is
Batterto
Bloody
Beaver
Bard Isl
Blackh
Black Is
Burnt B
Birchy
Bet's Co
Bay Bull

Alphabetical List of Towns, Villages, and Settlements.

Names of Places.	Districts.	Post Towns.
Adam's Cove	Bay de Verde	Carbonear
Amherst Cove, upper	Bonavista	Trinity
Amherst Cove, lower	Bonavista	Trinity
Apsy Cove	Fogo	Fogo
Aqua Forte	Ferryland	Ferryland
Admiral's Beach	St. Mary's and Placentia	St. Mary's
Angel's Cove	do do	Placentia
Arnold's Cove	do do	Little Placentia
Amos Cove	do do	Great Placentia
Belle Isle	St. John's East	Portugal Cove
Balline	do	do
Broad Cove	do	do
Blackhead	St John's West	St. John's
Broad Cove	Harbor Main	Harbor Main
Bacon Cove	Harbor Main	Harbor Main
Burnt Head, (Cupids)	Brigus	Brigus
Broad Cove	do	do
Bull Cove	do	do
Blow-me-Down	do	do
Bareneed	do	do
Brigus	do	do
Bryant's Cove	Harbor Grace	Harbor Grace
Bishop's Cove	do	do
Beachy Cove	do	do
Blow-me-Down	Bay de Verde	Carbonear
Broad Cove, (No. 8.)	do	do
Blackhead	do	do
Bay de Verde	do	do
Boney Brook	do	do
Bird Island Cove	Trinity	Trinity
Birchey Cove	do	Bonavista
Barrow Harbor	do	Trinity
Back Harbor	Fogo and Twillingate	Twillingate
Broom Close	Trinity	Trinity
Bloody Bay	do	do
Bonavista	Bonavista	Bonavista
Bragg's Island	do	do
Burnt Island	do	do
Batterton's Island	do	do
Bloody Arm	Fogo	Fogo
Beaver Cove	do	do
Bard Islands	do	do
Blackhead Cove	Twillingate	do
Black Island	do	do
Burnt Bay	do	do
Birchy Bay	do	do
Bet's Cove	Fogo	do
Bay Bulls	Ferryland	Bay Bulls

Names of Places.	Di-stricts.	Post Towns.
Burnt Cove	Ferryland	Bay Bulls
Balline	do	do
Brigus	do	Ferryland
Biscay Bay	Placentia and St. Mary's	Trepassey
Barisnay	St. Mary's	St. Mary's
Beckford C. Shore	Placentia and St. Mary's	Placentia
Branch	Placentia	do
Bordeaux	do	Little Placentia
Black River	do	do
Barren Island	do	do
Britt's Hole	do	do
Burgeo	do	do
Bona	do	Great Placentia
Burnt Islands	do	do
Bane Harbor	do	do
Beau Bois	do	do
Burin	Burin	Burin
Brunet Island	Fortune Bay	Harbor Breton
Bay de East	do	do
Bay de North	do	do
Bock Side Cove	Trinity	Trinity
Barrow	Fortune Bay	Harbor Breton
Belloram	do	do
Boxy	do	do
Blanchett	do	do
Bay de Peau	do	do
Brimball's Head	do	do
Bonne Bay	do	do
Brimball's Store House	La Poile	Burgeo
Burgeo (Upper)	do	do
Burgeo (Lower)	do	do
Brazils	do	La Poile
Baker's Tickie	do	do
Burnt Islands	do	do
Brent's Cove	do	do
Bede Cove	do	do
Bear Cove	do	do
Cape Spear	St. John's East	St. John's
Chamberlain	Harbor Main	St. John's
Chapel's Cove	do	Harbor Main
Cat's Cove	do	Brigus
Colliers	do	do
Cupids	Brigus	do
Caplin Cove	do	do
Clark's Beach	do	do
Centre Harber	Harbor Grace	Harbor Grace
Coosh	do	do
Coley's Point	do	do
Carbonear	Carbonear	Carbonear
Cloun's Cove	Bay de Verds	do
Caplin Cove	do	do
Chapel Arun	Trinity	Harbor Grace

N
 Chan
 Cat
 Cuck
 Cata
 Cotte
 Cobb
 Cape
 Cape
 Cat
 Cann
 Cape
 Chan
 Capli
 Capli
 Cape
 Cape
 Cape
 Colin
 Cape
 Cusle
 Clatti
 Corbi
 Conn
 Con
 Corbo
 Coom
 Conne
 Cul d
 Cape
 Coppe
 Cotten
 Cinqu
 Chanr
 Dock
 Dock
 Daniel
 Dildo
 Deer
 Dead
 Dotin
 Dog H
 Distre
 Dog H
 Davis
 Duriel
 Dawso
 Despa
 Drago
 Deer
 Explo
 Englis
 Englis
 Bell

Names of Places.	District.	Post Towns.
Chance Cove	Trinity	Harbor Grace
Cat Cove	do	do
Cuckold's Cove	do	Trinity
Catalina	do	do
Cotterell's Is and	Bonavista	do
Cobbler's Island	do	Bonavista
Cape Island	do	do
Cape Freels	do	do
Cat Harbor	Fogo	Fogo
Cann Island	do	do
Cape Fogo	do	do
Change Islands	Twillingate	Twillingate
Caplin Cove	Fogo	Fogo
Caplin Bay	Ferryland	Ferryland
Cape Broyle	do	do
Cape Race	St. Mary's and Placentia	Trepassey
Cape Pine	do do	do
Colinet	do do	St. Mary's
Cape Dog	do do	do
Cuslett	do do	Great Placentia
Clattice Harbor	do do	do
Corbin	Burin	Burin
Conn	Fortune Bay	Harbor Breton
Con Harbor	do	do
Corbon	do	do
Coomb's Cove	do	do
Connaigre Bay	do	do
Cul de Sac	do	do
Cape La Have	do	do
Coppett	do	do
Cotteau	do	do
Cinque Serf	do	do
Channel	Burgeo and La Poile	La Poile
Dock-port de Grace	Brigus	Brigus
Dock-point	Harbor Grace	Harbor Grace
Daniel's Cove	Trinity	Carbonear
Dildo Cove	do	Harbor Grace
Deer Island	Bonavista	Bonavista
Dead Man's Bay	Fogo and Twillingate	Fogo
Dotting Cove	do do	do
Dog Bay	do do	Twillingate
Distress	Placentia and St. Mary's	Placentia
Dog Harbor	do do	Little Placentia
Davis's Cove	do do	do
Duriell	Burin	Burin
Dawson's Cove	Fortune Bay	Harbor Breton
Despair Bay	do	do
Dragon Bay	Burgeo and La Poile	Burgeo
Deer Island	do do	do
Exploits-Burnt Island	Fogo and Twillingate	Twillingate
English Harbor	Fortune Bay	Harbor Breton
English Harbor, near } Belloram }	do	do

Names of Places.	District.	Post Towns.
Eastern Point	Burgeo and La Poile	La Poile
Flat Rock, (Torbay)	St. John's, East	St. John's
Freshwater	do do	do
Fox Trap	Harbor Main	do Topsail
Freshwater	Bay de Verde	Carbonear
Fox Harbor	Trinity	Trinity
Freshwater Bay	Bonavista	do
Flat Island	do	do
Flower Island	do	Bonavista
Fogo Har. and Islands	Fogo and Twillingate	Fogo
Fortune Harbor	do do	Twillingate
Flurry's Bite	do do	do
Ferryland	Ferryland	Ferryland
Fermeuse	do	do
Fox Harbor	Placentia and St. Mary's	Little Placentia
First Beach & Freshwtr	do do	Great Placentia
Flat Island	Burin	Burin
Fox Cove	do	do
Fortune	do	do
Forn	Fortune Bay	Harbor Breten
Furby's Cove	do	do
Fox Island Harbor	do	do
Francois	Burgeo and La Poile	La Poile
Frenchman's Cove	do do	do
Gullies Upper	Harbor Main	Topsail
Gullies Lower	do	do
Gasters	do	do
Gullies and Goulds	Brigus	Brigus
Grate's Cove	Bay de Verde	Carbonear
Green's Harbor	Trinity	do
Goosebury Cove	do	Harbor Grace
Ganny Cove	do	do
Green Bay	do	Trinity
Gooseberry Island	Bonavista	Bonavista
Greenspond and Tickle	do	Greenspond
Grant's Island	do	do
Gander Bay	Fogo and Twillingate	Fogo
Grapes Cove	do do	do
Goulds Bay Bulls	St. John's, West	St. John's
Gaskier	St. Mary's and Placentia	St. Mary's
Gull Cove	Placentia and St. Mary's	Placentia
Golden Bay	do do	do
Gooseberry	do do	do
Grandy's Point	do do	do
Gallows Harbor	do do	Great Placentia
Gold's Cove	Burin	Burin
Grand Bank	do	do
Grand Beach	do	do
Gurash	Fortune Bay	do
Grand John	do	Harbor Breten
Grant's Cove	do	do

N
Grea
Grip
Gaul
Grea
Grea
G-na
Hori
Holy
Harl
Hall
Hibb
Harb
Hut
Hear
Hear
Hear
Hare
Harb
Herr
Hall
Holy
Harr
Harb
Hay
Harb
Hare
Harb
Herr
Harr
Harb
Hact
Harb
Hisc
Islan
Islan
Irelan
India
India
India
Isle
Isle
Janni
Jugg
Job's
Joe B
Jacks
John's

Names of Places.	District.	Post Towns.
Great Harbor	Fortene Bay	Harbor Breton
Grole	do	do
Gripe Island	do	do
Gaultois	do	do
Great Jervois	do	do
Grandy's Brook	do	do
G-na	Burgeo and La Poile	Burgeo
Horse Cove	Conception Bay	La Poile
Holyrood, Nor. & Sou.	Harbor Main	Portugal Cove
Harbor Main	do	St. John's
Hall's Town	Port de Grave	Harbor Main
Hibb's Mele	do	Brigus
Harbor Grace	Harbor Grace	do
Hunt's Harbor	Trinity	Harbor Grace
Heart's Desire	do	Carbonear
Heart's Delight	do	Harbor Grace
Heart's Content	do	do
Heart's Ease	do	Carbonear
Hare Bay	Fogo and Twillingate	Harbcr Grace
Harbor Island	do do	Fogo
Herring Neck	do do	do
Hall's Bay	do do	Twillingate
Holyrood, Rood-pond	St. Mary's and Placentia	do
Harry Cove	do do	St. Mary's
Harbor Buffet	do do	do
Hay Stack	do do	Little Placentia
Harbor Mille	Fortune Bay	do
Hare Harbor	do	Harbor Breton
Harbor Breton	do	do
Hermitage Cove	do	do
Harry's Cove	do	do
Harbor Gulley	do	do
Hacter's Point	Burgeo and La Poile	Burgeo
Harbor Le Cou	do do	La Poile
Hiscoek's Point	do do	do
Island Cove	Harbor Grace	Harbor Grace
Island Cove, lower	Bay de Verds	Carbonear
Island Cove	Trinity	Harbor Grace
Ireland's Eye	do	do
Indian Arm	Bonavista	Bonavista
Indian Bay	do	do
Indian Islands	Fogo and Twillingate	Fogo
Indian Cove	do do	Twillingate
Isle of Valen	Placentia and St. Mary's	Great Placentia
Isle de Mort	Burgeo and La Poile	La Poile
Juniper Stump	Port de Grave	Brigus
Juggler's Cove	Harbor Grace	Harbor Grace
Job's Cove	Bay de Verds	Carbonear
Joe Batt's Arm	Fogo and Twillingate	Fogo
Jackson's Arm	do do	do
John's Pond	St. Mary's and Placentia	St. Mary's

Names of Places.	District.	Post Towns.
Jean de Bay	Burin	Burin
Jack Fountain	Fortune Bay	Harbor Breton
Jersey Harbor	do	do
Keiligrewa	Conception Bay	St. John's, Top'l
Kerley's Harbor	Trinity	Trinity
Knight's Cove	do	do
King's Cove	do	King's Cove
Keel's	do	do
King's Cove	Fogo and Twillingate	Fogo
King's Harbor	Burgeo and La Poile	La Poile
Logy Bay	St. John's East	St. John's
Long Pond	Harbor Main	do Topsail
Lance Cove	do	do do
Long Beach	Port de Grave	Brigus
Lower Small Point	Bay de Verds	Carbonear
Low Point	do	do
Lance Cove	Trinity	do
Lion's Den	Fogo and Twillingate	Fogo
Loom Bay	do do	Twillingate
Leading Ticks	do do	do
Little Bay Island	do do	do
Little Island	St. Mary's	St. Mary's
Little Salmonier	do	do
Leat's Cove	Placentia and St. Mary's	Great Placentia
Little Placentia	do do	Little Placentia
La Manche	do do	do
Little Harbor	do do	do
Little Bay	Burin	Burin
Lawn	do	do
Lamaline	do	Lamaline
Longue de Serf	Fortune Bay	Harbor Breton
Lobster Cove	do	do
Lolly Cove	do	do
Little Bay	do	do
Lamb's Passage	do	do
Little River	do	do
Little Bay—La Poile	Burgeo and La Poile	La Poile
La Poile	do do	do
La Plan'e	do do	do
Maddox Cove	St. John's West	St. John's
Middle Bight	Harbor Main	Top-sail
Manuels	do	do
Middle Arm	do	Harbor Main
Middle Cove	St. John's East	St. John's
Mercer's Cove	Harbor Grace	Harbor Grace
Mosquito	Carbonear	Carbonear
Marshall's Folly	Bay de Verds	do
Mulley's Cove	do	do
Muddy Hole	Fogo and Twillingate	Fogo
Merriott's Harbor	do do	Twillingate
Moreton's Harbor	do do	do

N
 Nov
 Moh
 Mos
 Mall
 Mot
 Midd
 Muz
 Nar
 Mus
 Mer
 Mah
 Mur
 Mort
 Moly
 Mus
 Mille
 Most
 Moon
 Marg
 Nort
 New
 New
 New
 New
 New
 Nogg
 New
 Nimm
 Nipp
 North
 North
 New
 New
 Outer
 Otter
 Ochr
 Old
 Old
 Old
 Open
 Olive
 Oier
 Old
 Pouch
 Portu
 Petty
 Port
 Perry
 Plate
 Pouch

Names of Places.	District.	Post Towns.
Mouse Point	Fogo and Twillingate	Twillingate
Mobile	Ferryland	Bay Bulls
Mosquito Island	St. Mary's and Placentia	St. Mary's
Mall Bay	do do	do
Mother Lxx's	do do	do
Middle House	do do	St. John's
Muzzel Pond	do do	St. Mary's
Marguise	do do	Little Placentia
Mussel Harbor	do do	do
Merasheen	do do	do
Mahoney's Cove	do do	Great Placentia
Murphy's Cove	do do	do
Mortier Bay	Burin	Burin
Molyers and Barrieway	do	Burin
Moss Ambrose	Fortune Bay	Harbor Breton
Miller's Passage	do	do
Mosquito	Burgeo and La Poile	Burgeo
Moon's Face	do do	La Poile
Margaree	do do	do
Northern Gut	Port de Grave	Brigus
New Perlican	Trinity	Carbonear
New Harbor	do	Harbor Grace
New Bonaventure	do	Trinity
Newman's Cove	do	do
New Harbor	do	do
Newell's Island	do	do
Noggin Cove	Fogo and Twillingate	Fogo
New Bay	do do	Twillingate
Nimrod	do do	do
Nipper's Harbor	do do	do
North Harbor	St. Mary's and Placentia	St. Mary's
North Harbor	do do	Little Placentia
New Harbor	Fortune Bay	Harbor Breton
New Harbor	do	Burgeo
Outer Cove	St. John's East	St. John's
Otterbury	Bay de Verda	Carbonear
Ochre Pit Cove	do	do
Old Perlican	Trinity	do
Old Shop	do	Harbor Grace
Old Bonaventure	do	Trinity
Open Hall	Bonavista	do
Oliver's Cove	Placentia and St. Mary's	Placentia
Olerin	do do	do
Old Man's Bay	Burgeo and La Poile	Burgeo
Pouch Cove	St. John's, East	St. John's
Portugal Cove	St. John's, East	do Port Cove
Petty Harbor	do West	do do
Port de Grave	Port de Grave	Brigus
Perry's Cove	Bay de Verda	Carbonear
Plate Cove	Bonavista	Trinity
Pouch Cove	do	Bonavista

Names of Places.	District.	Post Towns.
Pool's Island	Bonaviata	Bonaviata
Pinchard's Island	do	do
Pig Island	do	do
Pond Head	do	Greenspond
Portugal Cove	St. Mary's and Placentia	Trepasey
Point Laffaye	do do	St. Mary's
Patrick's Cove	do do	Great Placentia
Point Verd	do do	do
Placentia (Great)	Placentia and St. Mary's	do
Placentia (Little)	do do	Little Placentia
Point Mall	do do	do
Prisque	do do	Great Placentia
Paradise (Great)	do do	do
Paradise (Little)	do do	do
Paradise Sound	do do	do
Petit Fort	do do	do
Pickaree	Fortune Bay	Harbor Breton
Petites	Burgeo and La Poile	La Poile
Quidi Vidi	St. John's, East	St. John's
Rip Rap	Port de Grave	Brigus
Red Cliff Cove	Bay de Verdes	Carbonear
Random Sound	Trinity	Trinity
Rider's Harbor	do	do
Ragged Harbor	Fogo and Twillingate	Fogo
Ragged Harbor	Trinity	Trinity
Red Cliff Island	Bonaviata	do
Round Harbor	Fogo and Twillingate	Fogo
Renews	Ferryland	Ferryland
Rains Islands	Placentia and St. Mary's	Little Placentia
Red Island	do do	do
Ragged Islands	do do	do
Rushoon Harbor	do do	do
Red Harbor	Burin	Burin
Rock Harbor	do	do
Rencontre	Fortune Bay	Harbor Breton
Round Cove	do	do
Raymond Island	do	do
Round Harbor	do	do
Richard's Harbor	Burgeo and La Poile	do
Rencontre	do do	do
Rameo	do do	Burgeo
Red Island	do do	do
Rock Harbor, West	do do	do
Rotto	do do	La Poile
Rose Blanche	do do	do
Seal's Cove	Harbor Main	St. John's, Tops ¹
Salmon Cove	do	Harbor Main
Salmon Cove (S. Gut)	Port de Grave	Brigus
Ship Cove	do	do
Sandy Cove	do	do
Spaniard's Bay	Harbor Grace	Harbor Grace
Salmon Cove Head	Bay de Verdes	Carbonear

Names of Places.	Districts.	Post Towns.
Spout Cove	Bay de Verds	Carbonear
Scilly's Cove	Trinity	do
Seal Cove	do	do
Shoal Harbor	do	do
Sill Down	do	Trinity
Selby's Cove	do	do
Spaniard's Bay	do	do
Ship Cove	do	do
Salmon Cove	do	do
Spillard's Cove	do	do
Stock's Cove	Bonavista	do
Sandy Cove	do	do
Salvage	do	do
Shoe Cove	do	Bonavista
Swain's Island	do	do
Ship Island	do	do
Seldom-come-by	Fogo and Twillingate	Fogo
Shoal Bay	do do	do
Stocking Harbor	do do	do
Snook's Arm	do do	Twillingate
Shoe Cove	do do	do
St. Sholts	Placentia and St. Mary's	Trepassey
St. John's	St John's	St. John's
Ship Cove	Placentia and St. Mary's	Great Placentia
St. Lawrence (Great)	Burin	Burin
St. Lawrence (Little)	do	do
Spencer's Cove	Placentia and St. Mary's	Little Placentia
Seveley's Cove	do do	do
Southern Harbor	do do	do
Sandy Harbor	do do	Great Placentia
St. Kyran's	do do	do
South East Bite	do do	do
Spanish Room	Burin	Burin
Sagona Island	Fortune Bay	Harbor Breton
Stones Cove	do	do
St. Jacques	do	do
S. W. Bainsway	do	do
Sam Hitches	do	do
Swoir Cove	Burgeo and La Poile	Burgeo
Seal Island Harbor	do do	La Poile
Topsail	Harbor Main	St. John's, Tops'l
Turk's Gut	Port de Grave	Bigus
Turk's Cove	Trinity	Carbonear
Tickle Harbor	do	Harbor Grace
Trinity	do	Trinity
Trinity	do	do
Tilton Harbor	Fogo and Twillingate	Fogo
Three Arms	do do	do
Twillingate	do do	Twillingate
Tory Town	do do	do
Tizzard's Harbor	do do	do
Tilt Cove	do do	do

Names of Places.	District.	Post Towns.
Trepassey	St. Mary's and Placentia	Placentia
Tuck's Beach	do do	Little Placentia
Toselo	do do	Great Placentia
Upper Small Point	Bay de Verda	Carboncar
Virgin's Cove	Placentia and St. Mary's	Little Placentia
Vere Island	Bonavista	Bonavista
Whitmondoy Hill	Harbor Grace	Harbor Grace
Western Bay	Bay de Verda	Carboncar
White Point	Trinity	Trinity
Warren's Harbor	Bonavista	Bonavista
West'n Arm-Rocky Bay	Fogo and Twillingate	Fogo
Western Head	do do	Twillingate
Waldron's Cove	do do	Fogo
Witless Bay	Ferryland	Bay Bulls
Woody Island	Placentia and St. Mary's	Little Placentia
Wreck Island	Burgeo and La Poile	Burgeo
Western Point	do do	La Poile

The following notifications and appointments have been made since the foregoing sheets went to press :—

Martin Williams, to be Preventive Officer of Customs at Bay Bulls, in the room of J. L. McKie, retired.

John M. Maddock, to be a member of the Board of Road Commissioners at Port de Grave, (North side of Northern Gut Bridge.) Road Board, Bay de Verda, Upper Division—Maurice Walsh instead of Pierce Hanrahan, Gazetted by mistake.

The following are the limits of the Road Boards for Trinity Bay South and West, under Act 27 Vic., Cap. 3.

Old Perlican and Grate's Cove Board, from Grate's Cove (inclusive) to Scilly Cove (inclusive.)

Heart's Content Road Board, from Scilly Cove (exclusive) to Green's Harbor (exclusive.)

New Harbor Road Board, from Green's Harbor (inclusive) to head of the Bay.

John Peyton, John W. Owen, and John M. Hurse, to be Commissioners for the erection of a Breakwater at Twillingate

Rev. R. H. Taylor, and James Tarrahan, to be Commissioners of the Commercial School, at Brigus.

W. J. S. Donnelly, to be a Commissioner of the Harbor Grace Grammar School, in the room of W. Donnelly, Esq., deceased.

To be Justices of the Peace for the Northern District of this Island, Patrick Nowlan, James Tarrahan, J. M. Maddock, Benjamin T. H. Gould; and Michael Dwyer.

David Candow, to be Stipendiary Magistrate at Bonavista, in the room of Alexander Bremner, resigned.

James Moran, M.D., to be Stipendiary Magistrate at Burin, in the room of the late William Hooper, deceased.

John Miffen, to be Preventive Officer for the collection of Colonial Revenue at the port of Catalina, in the District of Trinity Bay.

John Miffen, to be Inspector of Weights and Measures for that part of the District of Trinity from Ragged Harbor to Spiller's Cove, inclusive, under Act 27 Vict., Cap 14, Sec. 14.

Henry T. B. Wood, to be an Attorney and Solicitor of the Supreme Court.

Robert J. Parsons, Jr., to be an Attorney and Solicitor of the Supreme Court.

Young Men's Christian Association—Chairman of meetings, D. Stalker. Treasurer, R. Blackwood. Librarian, R. Gisborne. Secretary, J. E. P. Peters. Committee—Geo. Whitten, J. P. Heath, Jas. Winter, and W. H. Stowe.

Wesleyan Academy, Carbonear—Rev. J. Winterbotham, Chairman, I. L. McNeil, John Rorke, B. T. H. Gould, J. Maddock, Capt. William Penny, W. F. Taylor, J. H. Taylor, and John E. Pike, Directors; J. F. Apsey, Secretary; John Webb, Principal.

Erratum—Page 23, "Shipping Master and Emigrant Agent—James Finlay," should be—Superintendent of Mercantile Marine Office—James Finlay.

STAR LIFE ASSURANCE SOCIETY,

48, Moorgate Street, London.

Trustees :

William Betts, Esq.		William Skinner, Esq.
Frederick Mildred, Esq.		George Smith, LL.D. &c.

D I R E C T O R S :

Chairman :

Charles Harwood, Esq. F.S.A., Judge of the County Court of Kent, and Recorder of Shrewsbury.

Deputy-Chairman :

John Churchill, Esquire.

Report of the Directors

*Presented at the Annual Meeting held at the Society's House,
March 7th, 1864.*

THE Directors of the "Star Life Assurance Society," in again meeting their constituents, have great pleasure in being able to present a most gratifying report, at this, the twentieth annual, or fourth quinquennial meeting.

The Directors have to report, that during the year 1863 they received 1,195 proposals for assurance; of this number they issued 956 policies for the assurance of £353,310, yielding in annual premiums £13,114 16s. 1d., the highest amount paid

for new policies in any year since the foundation of the Society.

As a further illustration of the advance of the Company the following comparative result is given of the four completed cycles of five years which have elapsed.

	No. of Policies.	Sums Assured.	Premiums.
First Period, to 1848	2,204	£690,277	£22,506 15 11
Second " to 1853	2,832	923,156	30,280 9 7
Third " to 1858	3,191	1,686,040	37,766 14 4
Fourth " to 1863	4,792	1,721,252	60,031 5 0

—Of this number there remained in existence at the close of the year 9,370 Policies for the assurance of £3,229,841 10s.

By the Auditor's Report it will be observed that the income of the Society on the 31st of December last amounted to £120,489 4s. 3d., and the Accumulated Fund at that date amounted to £557,361 9s. 11d.; showing an increase in the Fund of £72,384 15s. 11d., during the year.

—Claims by death have arisen under 107 Policies, assuring 92 persons, and the sum of £32,804 12s. 1d. (which includes bonus additions of £1,469 0s. has been paid to the representatives of those deceased. Of this amount, £6,000 has been reassured with other offices, thus reducing the net loss of the *Star* by death to £26,804 12s. 1d. The claims which have been discharged since the origin of the Society amount in the aggregate to £291,348 5s. 5d.

This being the fourth quinquennial period the Directors are called upon by the deed of settlement to investigate the affairs of the Society, with a view of apportioning the Profits to the Share and Policy holders. For this purpose they have instructed Mr. Jenkin Jones to make a valuation, and give a complete and detailed report of the assets and liabilities of the Society. That Report, which will be read to you, shows, as was anticipated, that the business effected is of a very profitable character, and will enable the Directors to declare a reversionary Bonus averaging rather more than 53 per cent upon the Premiums paid during the past five years, the result of which, as relating to each particular policy will be communicated to those interested at as early a period as possible. As, however, these calculations will occupy considerable time, it is obvious that such result cannot be communicated to all the Policy-holders in less than two or three months.

By Order,

CHARLES HARWOOD, *Chairman.*

JESSE HOBSON, *Secretary.*

JOSEPH WOODS,

Agent for Newfoundland.

y:
he
ed'

ri
7
4
0

of
s.
ne
to
ate
the

ing
des
ta-
re-
ho
vo
he

are
sirs
the
ted
and
hat
ed,
and
nus
ams
ing
cer-
eso
hat
s in

a.

nd.

