

The subscriber has received from London a supply of Drugs and Patent Medicines.

Drugs and Medicines, PAINTS, OILS, &c.

The subscriber has received from London a supply of Drugs, Medicines, Surgeon's Instruments, and Trusses.

Drugs and Medicines, PAINTS, OILS, &c.

The subscriber has received from London a supply of Drugs, Medicines, Surgeon's Instruments, and Trusses.

Drugs and Medicines, PAINTS, OILS, &c.

The subscriber has received from London a supply of Drugs, Medicines, Surgeon's Instruments, and Trusses.

Drugs and Medicines, PAINTS, OILS, &c.

The subscriber has received from London a supply of Drugs, Medicines, Surgeon's Instruments, and Trusses.

Drugs and Medicines, PAINTS, OILS, &c.

The subscriber has received from London a supply of Drugs, Medicines, Surgeon's Instruments, and Trusses.

Drugs and Medicines, PAINTS, OILS, &c.

The subscriber has received from London a supply of Drugs, Medicines, Surgeon's Instruments, and Trusses.



THE CHRONICLE

It is published every Friday afternoon, by DUNN & CO., at their office in the brick building corner of Prince William and Church streets.

THE CHRONICLE

It is published every Friday afternoon, by DUNN & CO., at their office in the brick building corner of Prince William and Church streets.

THE CHRONICLE

It is published every Friday afternoon, by DUNN & CO., at their office in the brick building corner of Prince William and Church streets.

THE CHRONICLE

It is published every Friday afternoon, by DUNN & CO., at their office in the brick building corner of Prince William and Church streets.

THE CHRONICLE

It is published every Friday afternoon, by DUNN & CO., at their office in the brick building corner of Prince William and Church streets.

THE CHRONICLE

It is published every Friday afternoon, by DUNN & CO., at their office in the brick building corner of Prince William and Church streets.

THE CHRONICLE

It is published every Friday afternoon, by DUNN & CO., at their office in the brick building corner of Prince William and Church streets.



A CURE FOR ALL!!!

THE LATE BARON SWIN—It has been previously remarked that he was eccentric and whimsical; amongst his most noticeable peculiarities was his strange penchant for living by night.

HOLLOWAY'S OINTMENT.

Extraordinary Cure of a Case. GUY, the Metropolitan, King's College, and Charing Cross Hospitals.

HOLLOWAY'S OINTMENT.

Extraordinary Cure of a Case. GUY, the Metropolitan, King's College, and Charing Cross Hospitals.

HOLLOWAY'S OINTMENT.

Extraordinary Cure of a Case. GUY, the Metropolitan, King's College, and Charing Cross Hospitals.

HOLLOWAY'S OINTMENT.

Extraordinary Cure of a Case. GUY, the Metropolitan, King's College, and Charing Cross Hospitals.

HOLLOWAY'S OINTMENT.

Extraordinary Cure of a Case. GUY, the Metropolitan, King's College, and Charing Cross Hospitals.

HOLLOWAY'S OINTMENT.

Extraordinary Cure of a Case. GUY, the Metropolitan, King's College, and Charing Cross Hospitals.



LITERARY EXTRACTS.

THE LATE BARON SWIN—It has been previously remarked that he was eccentric and whimsical; amongst his most noticeable peculiarities was his strange penchant for living by night.

THE BOATMAN OF DEAL.

When dark evening closed, charged with tempest and rain, And the gale of destruction to sweep o'er the main.

THE BOATMAN OF DEAL.

When dark evening closed, charged with tempest and rain, And the gale of destruction to sweep o'er the main.

THE BOATMAN OF DEAL.

When dark evening closed, charged with tempest and rain, And the gale of destruction to sweep o'er the main.

THE BOATMAN OF DEAL.

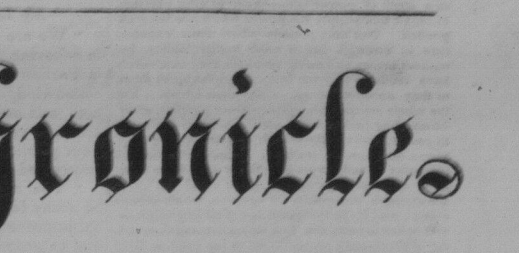
When dark evening closed, charged with tempest and rain, And the gale of destruction to sweep o'er the main.

THE BOATMAN OF DEAL.

When dark evening closed, charged with tempest and rain, And the gale of destruction to sweep o'er the main.

THE BOATMAN OF DEAL.

When dark evening closed, charged with tempest and rain, And the gale of destruction to sweep o'er the main.



LITERARY EXTRACTS.

THE LATE BARON SWIN—It has been previously remarked that he was eccentric and whimsical; amongst his most noticeable peculiarities was his strange penchant for living by night.

THE BOATMAN OF DEAL.

When dark evening closed, charged with tempest and rain, And the gale of destruction to sweep o'er the main.

THE BOATMAN OF DEAL.

When dark evening closed, charged with tempest and rain, And the gale of destruction to sweep o'er the main.

THE BOATMAN OF DEAL.

When dark evening closed, charged with tempest and rain, And the gale of destruction to sweep o'er the main.

THE BOATMAN OF DEAL.

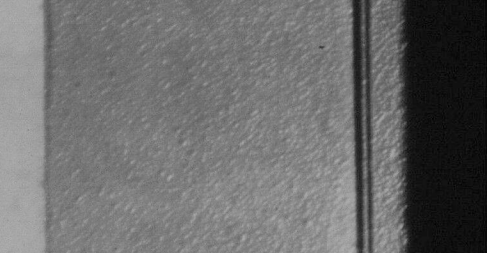
When dark evening closed, charged with tempest and rain, And the gale of destruction to sweep o'er the main.

THE BOATMAN OF DEAL.

When dark evening closed, charged with tempest and rain, And the gale of destruction to sweep o'er the main.

THE BOATMAN OF DEAL.

When dark evening closed, charged with tempest and rain, And the gale of destruction to sweep o'er the main.



LITERARY EXTRACTS.

THE LATE BARON SWIN—It has been previously remarked that he was eccentric and whimsical; amongst his most noticeable peculiarities was his strange penchant for living by night.

THE BOATMAN OF DEAL.

When dark evening closed, charged with tempest and rain, And the gale of destruction to sweep o'er the main.

THE BOATMAN OF DEAL.

When dark evening closed, charged with tempest and rain, And the gale of destruction to sweep o'er the main.

THE BOATMAN OF DEAL.

When dark evening closed, charged with tempest and rain, And the gale of destruction to sweep o'er the main.

THE BOATMAN OF DEAL.

When dark evening closed, charged with tempest and rain, And the gale of destruction to sweep o'er the main.

THE BOATMAN OF DEAL.

When dark evening closed, charged with tempest and rain, And the gale of destruction to sweep o'er the main.

THE BOATMAN OF DEAL.

When dark evening closed, charged with tempest and rain, And the gale of destruction to sweep o'er the main.











