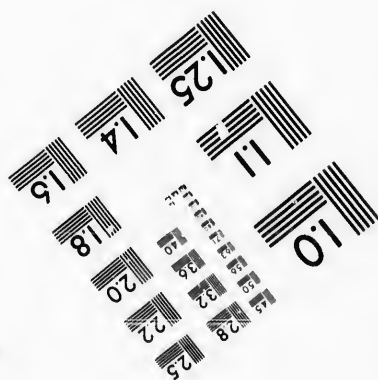
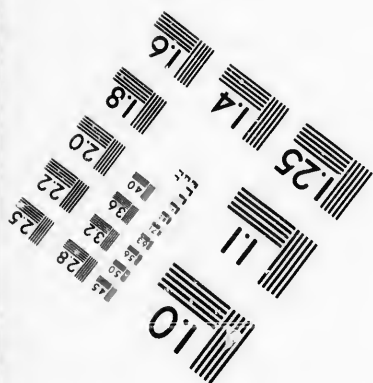
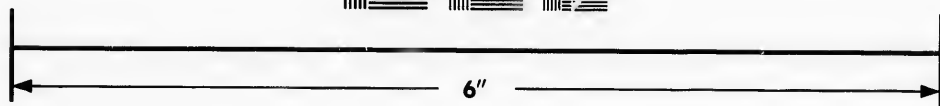
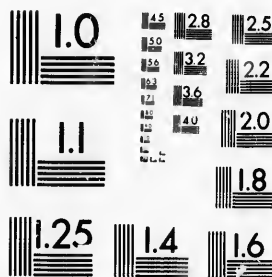


**IMAGE EVALUATION
TEST TARGET (MT-3)**



**Photographic
Sciences
Corporation**

23 WEST MAIN STREET
WEBSTER, N.Y. 14580
(716) 872-4503



**CIHM/ICMH
Microfiche
Series.**

**CIHM/ICMH
Collection de
microfiches.**



Canadian Institute for Historical Microreproductions / Institut canadien de microreproductions historiques



© 1987

Technical and Bibliographic Notes/Notes techniques et bibliographiques

The Institute has attempted to obtain the best original copy available for filming. Features of this copy which may be bibliographically unique, which may alter any of the images in the reproduction, or which may significantly change the usual method of filming, are checked below.

L'Institut a microfilmé le meilleur exemplaire qu'il lui a été possible de se procurer. Les détails de cet exemplaire qui sont peut-être uniques du point de vue bibliographique, qui peuvent modifier une image reproduite, ou qui peuvent exiger une modification dans la méthode normale de filmage sont indiqués ci-dessous.

- | | |
|--|--|
| <input checked="" type="checkbox"/> Coloured covers/
Couverture de couleur | <input type="checkbox"/> Coloured pages/
Pages de couleur |
| <input checked="" type="checkbox"/> Covers damaged/
Couverture endommagée | <input checked="" type="checkbox"/> Pages damaged/
Pages endommagées |
| <input type="checkbox"/> Covers restored and/or laminated/
Couverture restaurée et/ou pelliculée | <input type="checkbox"/> Pages restored and/or laminated/
Pages restaurées et/ou pelliculées |
| <input type="checkbox"/> Cover title missing/
Le titre de couverture manque | <input checked="" type="checkbox"/> Pages discoloured, stained or foxed/
Pages décolorées, tachetées ou piquées |
| <input type="checkbox"/> Coloured maps/
Cartes géographiques en couleur | <input type="checkbox"/> Pages detached/
Pages détachées |
| <input type="checkbox"/> Coloured ink (i.e. other than blue or black)/
Encre de couleur (i.e. autre que bleue ou noire) | <input checked="" type="checkbox"/> Showthrough/
Transparence |
| <input type="checkbox"/> Coloured plates and/or illustrations/
Planches et/ou illustrations en couleur | <input type="checkbox"/> Quality of print varies/
Qualité inégale de l'impression |
| <input checked="" type="checkbox"/> Bound with other material/
Relié avec d'autres documents | <input type="checkbox"/> Includes supplementary material/
Comprend du matériel supplémentaire |
| <input type="checkbox"/> Tight binding may cause shadows or distortion
along interior margin/
La reliure serrée peut causer de l'ombre ou de la
distorsion le long de la marge intérieure | <input type="checkbox"/> Only edition available/
Seule édition disponible |
| <input type="checkbox"/> Blank leaves added during restoration may
appear within the text. Whenever possible, these
have been omitted from filming/
Il se peut que certaines pages blanches ajoutées
lors d'une restauration apparaissent dans le texte,
mais, lorsque cela était possible, ces pages n'ont
pas été filmées. | <input type="checkbox"/> Pages wholly or partially obscured by errata
slips, tissues, etc.. have been refilmed to
ensure the best possible image/
Les pages totalement ou partiellement
obscurcies par un feuillet d'errata, une pelure,
etc., ont été filmées à nouveau de façon à
obtenir la meilleure image possible. |
| <input type="checkbox"/> Additional comments:/
Commentaires supplémentaires: | |

This item is filmed at the reduction ratio checked below/
Ce document est filmé au taux de réduction indiqué ci-dessous.

10X	14X	18X	22X	26X	30X
<input type="checkbox"/>	<input type="checkbox"/>	<input type="checkbox"/>	<input checked="" type="checkbox"/>	<input type="checkbox"/>	<input type="checkbox"/>
12X	16X	20X	24X	28X	32X

The copy filmed here has been reproduced thanks to the generosity of:

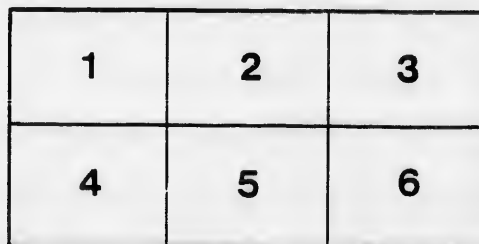
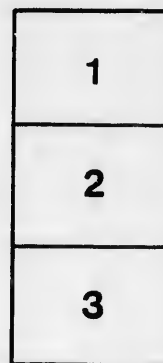
D. B. Weldon Library
University of Western Ontario
(Regional History Room)

The images appearing here are the best quality possible considering the condition and legibility of the original copy and in keeping with the filming contract specifications.

Original copies in printed paper covers are filmed beginning with the front cover and ending on the last page with a printed or illustrated impression, or the back cover when appropriate. All other original copies are filmed beginning on the first page with a printed or illustrated impression, and ending on the last page with a printed or illustrated impression.

The last recorded frame on each microfiche shall contain the symbol \rightarrow (meaning "CONTINUED"), or the symbol ∇ (meaning "END"), whichever applies.

Maps, plates, charts, etc., may be filmed at different reduction ratios. Those too large to be entirely included in one exposure are filmed beginning in the upper left hand corner, left to right and top to bottom, as many frames as required. The following diagrams illustrate the method:



L'exemplaire filmé fut reproduit grâce à la générosité de:

D. B. Weldon Library
University of Western Ontario
(Regional History Room)

Les images suivantes ont été reproduites avec le plus grand soin, compte tenu de la condition et de la netteté de l'exemplaire filmé, et en conformité avec les conditions du contrat de filmage.

Les exemplaires originaux dont la couverture en papier est imprimée sont filmés en commençant par le premier plat et en terminant soit par la dernière page qui comporte une empreinte d'impression ou d'illustration, soit par le second plat, selon le cas. Tous les autres exemplaires originaux sont filmés en commençant par la première page qui comporte une empreinte d'impression ou d'illustration et en terminant par la dernière page qui comporte une telle empreinte.

Un des symboles suivants apparaîtra sur la dernière image de chaque microfiche, selon le cas: le symbole \rightarrow signifie "A SUIVRE", le symbole ∇ signifie "FIN".

Les cartes, planches, tableaux, etc., peuvent être filmés à des taux de réduction différents. Lorsque le document est trop grand pour être reproduit en un seul cliché, il est filmé à partir de l'angle supérieur gauche, de gauche à droite, et de haut en bas, en prenant le nombre d'images nécessaire. Les diagrammes suivants illustrent la méthode.

LIST OF VOTERS
FOR THE
~~Parish of~~
Township of London
FOR 1897.

The Clerk shall, immediately upon the receipt of his copies, cause one of them to be posted up in a conspicuous place in the Court House; the Clerk of the Peace, upon receipt of his copies, shall cause one of them to be posted up in a conspicuous place in his office; every Public or Separate School Head-Master or Mistress shall in like manner post up one of his or her copies on the Door of the School House; and every Parson shall post up one of his copies in his Parson's Office.

LONDON, ONT.
WHEEL & FLEMING, PRINTERS

1897

L

Includes

PART 1—
Municipal
Legislation

No. on
Roll.

j 1593 Adm
1657 Axt

1624 Ber

j 1618 Ber

j 1627 Bru

1634 Bla

1664 Bre

j 1675 Bro

1704 Bu

j 1685 Bre

1695 Ba

VOTERS' LIST, 1897.

.....MUNICIPALITY OF.....

LONDON TOWNSHIP

POLLING SUB-DIVISION No. 1

Includes that part of St. George's Ward lying south of the centre of the Second Concession. Polling Place—Hutton's School House.

PART 1—Persons entitled to vote at both Municipal Elections and Elections to the Legislative Assembly.

No. on Roll.	Name and Occupation.	Con.	Lot	—	O. R.
j 1593	Adams, David, f....	2	20	m f and o	13
1657	Axtell, Henry, lab....	1	18	m f and o	13
1624	Berry, David, f.....	1	19	m f and oc	32
j 1618	Berry, Robert, f....	1	18	m f and t	13
j 1627	Bruce, Henry, f {2, 19, 20}			m f and o	1
1634	Black, James, f.....	1	23	m f and o	1
1664	Brammer, Edward, f.1		19	m f and o	1
j 1675	Brooks, Bern'd C, f..1		22	m f and o	1
1704	Bundy, Philip, f....	C	23	m f and o	32
j 1665	Brammer, Alvin, f...1		19	m f and o	1
1695	Bailey, Wm, f.....	C	22	m f and o	32

No. on Roll.	Name and Occupation.	Con.	Lot.	—	O. R.
j 1588	Collins, John, f... 2		20	m f and o	13
j 1602	Crossan, Eichard, f..2		21	m f and t	13
1680	Crowdy, H, blksmith.1		23	m f and oc	1
1564	Coombs, Chas, f....	2	18	m f and o	1
1589	Collins, Justin, f...2		20	m f and oc	13
1641	Cathro, J L, contractr.1		18	m f and o	13
1621	Davidson, Francis W, milkman	1	18	m f and oc	13
j 1603	Dobson, Geo Jas, f...2		21	m f and o	13
1690	Davis, James, f... ..1		26	m f and o	14
1620	Davidson, T, milkman.1		18	m f and t	13
j 1579	Dalton, E, butcher .2		17	m f and t	13
j 1630	Doak, Robert, f.....1		23	m f and oc	32
j 1609	Elson, Peter, f. {2 24, 25}		{1 24}	m f and o	1
j 1638	Foster, George, f....1		26	m f and o	14
1594	Fortner, Franklin, f..2		20	m f and oc	1
1672	Fortner, Fred, f....1		22	m f and oc	13
1639	Foster, Thos J, f....1		26	m f and oc	14
1586	Fortner, J H, f.....2		20	m f and t	13

POLLING SUB-DIVISION No. 1.

No. on Roll.	Name and Occupation.	Con.	Lot.	—	O. R.
j 1676	Fuller, William, f.C.	1	23	m f and o	32
1709	Finch, L G, f.....	C	24	m f and o	14
1711	Fulton, Wm, painter.	C	24	m f and o	13
j 1678	Freeman, Wm, f....	1	23	m f and oc	1
1677	Fuller, Wm John, f..	1	23	m f and oc	32

j 1623	Green, Robert, f..1&2	19	m f and o	1	
1604	Gard, George, f.....	2	21	m f and o	13
j 1679	Gowlett, John, f....	1	23	m f and t	32
1686	Goodall, James, f....	1	25	m f and oc	14

j 1578	Harris, Thomas F, f.2	18	m f and t	13	
1694	Hurry, Alexander, f.C	22	m f and o	1	
j 1663	Horne, Henry, f....	1	18	m f and o	13
1669	Hall, Alfred, f.....	1	19	m f and t	1
1688	Harrington, A T, f..	1	25,26	m f and t	14

j 1606	Johnson, John, f....	2	21	m f and o	13
1609	Jones, W. M, school teacher.....	2	21	m f and o	13
1636	Johnson, Wm, f....	1	25	m f and oc	15

1631	Keays, John, f.....	1	22	m f and oc	13
j 1631	Keays, William, f....	1	22	m f and t	13
1687	Kilbourn, Ira, f.....	1	25,26	m f and t	14

No. on Roll.	Name and Occupation.	Cor.	Lot.	—	O. R.
j 1605	Lawton, Samuel, f..	2	21	m f and o	13
1640	Low, Francis, f....	1	18	m f and o	13

j 1656	Millard, Robert, f..	1	18	m f and o	1
1660	Mercer, James, f....	1	18	m f and o	13
j 1612	Morden, J W, f....	(1 28) (2 25)		m f and o t	14
j 1708	Murphy, Edward, f.C	24	m f and o	13	
1613	Morden, Wesley, f..	2	25	m f and oc	14
j 1635	Michaels, John, f....	1	24	m f and t	15

j 1699	McLaren, John, f...C	22	m f and o	32	
1619	McPherson, James, f.1	18	m f and t	13	
1616	McNeice, Fred, f....	2	27	m f and t	13
1599	McConnell, George, f.2	21	m f and oc	13	
j 1628	McKenzie, Arch, f...1	19	m f and t	1	

j 1615	Nelson, Franklin, f .2	27	m f and o	14
j 1697	Newton, John, f...C	22	m f and o	32
1698	Newton, John, jr, f..C	22	m f and oc	32

1632	O'Brien, Thomas, f..	1	22	m f and oc	13
1645	Oldridge, Eli, f.....	1	18	m f and o	13

No. on Roll.

1582 Pl
1590 Pro
1607 Pas
1608 Pa
1668 Pu
1591 Pr
1577 Pe
j 1633 Pa
1611 Pr

j 1614 Ru
j 1622 Ro
j 1670 Ro
j 1671 Ro
j 1672 Ro
j 1625 Ro
1637 Ri
1642 Ro

j 1601 Sa
j 1683 Si
j 1684 Si
j 1702 Si
1696 Si
1673 So
1701 So
j 1626 So
1700 So

POLLING SUB-DIVISION NO. 1.

3

	No. on Roll.	Name and Occupation.	Con.	Lot.		P.O.
n f and o	13	1582 Platt, John, f.....	2	18	m f and o	13
n f and o	13	1590 Proudfoot, J J A, D.D.	2	20	m f and o	1
		1607 Pascoe, Samuel, f.....	2	22	m f and o	1
		1608 Pascoe, Samuel, jr, f.2	22	22	m f and oc	1
		1608 Pulford, William, f...1	19	19	m f and o	1
		1591 Proudfoot, W A, lawyr	2	20	m f and oc	1
		1577 Peters, John, f.....	2	17	m f and o	1
n f and o	1	j 1633 Payne, Henry, f....1	22	22	m f and t	13
n f and o	13	1611 Prince, Wm, f.....	2	24,25	m f and oc	15
n f and o	14					
n f and o	13					
n f and oc	14					
n f and t	15					
		j 1614 Rudd, Charles, f....	2	26	m f and t	15
		j 1622 Rogers, James, f....	1	19	m f and o	1
f and o	32	j 1670 Robb, Samuel, f....	1	21	m f and t	13
f and t	13	j 1671 Robb, David, f.....	1	21	m f and t	13
f and t	13	j 1672 Robb, Thomas, f....	1	21	m f and t	13
f and oc	13	j 1625 Rossiter, Fred, f....	1	19	m f and t	1
f and t	1	1637 Richardson, Jas, f...1	25	25	m f and oc	15
		1642 Rogers, James, f....	1	18	m f and o	32
f and o	14					
f and o	32					
f and oc	32					
		j 1601 Smithson, Joseph, f..	2	21	m f and t	13
		j 1683 Sissons, Samuel, f...1	25	25	m f and o	14
		j 1684 Sissons, Robert, f...1	25	25	m f and o	14
		j 1702 Sherry, Robert, f...C	22,23	22,23	m f and o	32
f and oc	13	1696 Sloman, Joseph, f...C	22	22	m f and t	32
f and o	13	1673 Scott, Mungo, f.....	1	22	m f and t	32
		1701 Smith, Charles, f...C	23	23	m f and o	32
		j 1626 Smith, W J, f.....	1	19	m f and o	13
		1700 Sonley, John, f.....C	22	22	m f and t	13

	No. on Roll.	Name and Occupation.	Con.	Lot.		P.O.
j	1581	Trott, John, f.....	2	18	m f and o	13
	1650	Tozer, H, carpenter..1	18	18	m f and o	1
	1703	Taylor, John, f.....C	23	23	m f and o	32
	1581	Trott, T H, f.....	2	18	m f and oc	13
		1693 White, Richard, f....	1	28	m f and oc	14
		1651 Wilson, William, f...1	18	18	m f and oc	13
		j 1666 Wyatt, Hugh, f....	1	19	m f and o	1
		j 1681 Ward, Patrick, f....	1	24	m f and o	1
		j 1692 Weir, Wm, f.....	1	27	m f and o	14
		j 1707 Ward, Michael, f...C	24	24	m f and o	1
		1652 Wilkins, James, f...1	18	18	m f and o	13
		1667 Wyatt E, school tchr.	1	19	m f and oc	1
		j 1609 Wilcox, G A, f.....	2	23	m f and o	13
		1610 Webb, Fred, f.....	2	24,25	m f and oc	1
		1609 Wilcox, Ebenezer, f..	2	23	m f and oc	13

168
11/16

PART 2—Persons entitled to vote at Municipal Elections only.

No. on Roll.	Name and Occupation.	Con.	Lot.	—	O	P
1674	Brooks, Annie	1	22	o	1	
1627	Bruce, Miss M.	1	19	o	1	
1629	Coo, Wm C, stenographer	1	20	o	1	
1597	Collins, J, hotel-keeper	2	20	oo	13	
1585	Cushing, Wm jr, iceman	2	19	o	1	
1584	Cushing, Edward	2	19	o	1	
1583	Cushing, William	2	19-17	o	1	
1680	Crowdy, Mrs C.	1	23	o	1	
1595	Collins, Mrs	{1 2}	{22 20,21}	o	13	
1595	Collins, Dennis, f...	{1 2}	{22 20,21}	o	oc	
1596	Collins, Stephen, f...	{1 2}	{22 20,21}	o	ou	
1635	Coote, John, f...	1	24	o		
1563	Coombs, Mrs. C.	2	18	o		
1602	Dignan, R. H., lawyer.	2	21	o	1	
1620	Elson, Jas. S., butcher	1	18	o		
1700	Edwards, John, f...	C	22	o		
1580	Elson, Richard, butcher	2	17	t	1	
1673	Fortner, Mrs	1	22	o	1	
1655	Fitzgerald, F.C., lawyer	1	18	o	1	
1616	Fitzgerald, judge	2	27	o		

No. on Roll.	Name and Occupation.	Con.	Lot.	—	P	O
1640	Glass, J. H., gentleman	1	18	oo		
1640	Glass, C. T., gentleman	1	18	oc		
1612	Grant, James, T ^p clerk	2	25	o	1	
1617	Gurd, J. R., broom m ⁿ kr.	1	18	o	13	
1679	Goble, Miss Frances	1	23	o	1	
1640	Glass, Mrs. W.	1	18	o	1	
1710	Gordon, J., merchant	C	24	o		
1625	Hammond, F, Ins. agent	1	19	o		
1601	Hodgins, Miss D.	2	21	o		
1631	Leigh, John B, plumber	1	22	o	1	
1685	Little, J. W, merchant	1	25	o	1	
1654	Looney, Robt, laborer	1	18	o	1	
1649	Lovell, Mrs	1	18	t	32	
1658	Moore, John, laborer	1	18	o and t	13	
1630	Michie, Mrs	1	21	o		
1578	Morris, Geo. T, butcher	2	18	o		
1658	Moore, William, bank messenger	1	18	o	13	
1687	Merriam, Mrs	1	25, 26	o	14	
1659	Moore, Mrs	1	18	o	32	
1598	McConnel, Mrs. Jos.	2	21	o	13	
1682	Nuttall, Robert, tailor	1	24	o	1	
1584	O'Brien, John, f...	{2 1}	{17, 23 22}	o	13	

No. on Roll. 1604 P
1617 P
1691 P
1616 R
1633 R
1580 R
1636 R
1700 S
1705 S
1653 S
1689 S
1648 S
1700 S
1618 T
1712 T

POLLING SUB-DIVISION No. 1.

	P.O.	No. on Roll.	Name and Occupation.	Con. Lot.		P.O.
	oc	1604	Payne, Henry, f.....	2 21		o
	oc	1617	Peters, W. F, f.....	1 18		o 1
	o 1	1691	Pocock, John W, shoe dealer.....	1 26		o 1
	o 13					o 1
	o 1					o 1
	o					o
		1616	Rogers, James, f.....	1 18		o
		1633	Redmond, Mrs. Mich..	1 22		o 1
		1580	Redmond, Mrs. M. A..	2 17, 26		o 1
	o	1636	Redmond, Jos. F, f....	1 25		o 1
	o					o
	o 1	1700	Steinhoff, Samuel, f....	C 22		o 1
	o 1	1705	Scott, Samuel, f.....	C 23		o
	o 1	1653	Stallwood, Mrs.....	{ C 22 1 18 }	23	o 15
t	32	1689	Smith, Horace, f.....	1 26		o 14
		1648	Smith, C. B, f.....	1 18		o 1
		1700	Sherry, Robt., f.....	C 22		o 32
o and t	13					
	o					
	o					
	o 13	1618	Taylor, John, f.....	1 18		o
26	o 14	1712	Thompson, R, gentleman	C 25		o 1
	o 32					
	o 13					
	o					
	o 1					
31	o 13					

No. on Roll.	Name and Occupation.	Con. Lot.		P.O.
1706	Ward, Mrs. John.....	C 23, 24		o 1
1616	Wood, Rich'd Shaw, f..	2 28		o 1
1592	Whiting, John M, f....	2 20		o 13
1586	Whitehall, Wm, f....	2 20		o 13

PART 3—Persons entitled to vote at Elections to the Legislative Assembly only:

1661	Mahon, Henry, laborer.	1 18	m f
1662	Moorhead, Jas, laborer.	1 18	m f

POLLING SUB-DIVISION No. 2

Includes that part of St. George's Ward between the centre of the Second Concession and the Fifth Concession line, excepting Lots 17, 18, 19, in Concession 4 and in Concession 3, north of the Medway. Polling Place—Hyde Park.

PART 1—Persons entitled to vote at both Municipal Elections and Elections to the Legislative Assembly :

No. on Roll.	Name and Occupation.	Con.	Lot.	—	O. C.
1425	Armitt, Alban, f....	4	22	m f and o	1
1426	Armitt, John, f....	4	22	m f and oc	1
1427	Armitt, Frank, f....	4	22	m f and oc	1
1428	Armitt, George, f....	4	22	m f and oc	1
1555	Broadhurst, Arth, f..	2	17	m f and o	13
j 1543	Barclay, Donald, f...3	25	m f and o	15	
1481	Brown, Walter, f....	3	21	m f and o	13
1482	Brown, Alfred, f....	3	21	m f and oc	13
j 1500	Barclay, Hugh, f....	3	25	m f and o	15
1528	Biggs, Jas, carpenter.	3	18	m f and o	13
1526	Bogue, James, f.....	3	18	m f and o	13
1459	Coombs, Lionel C, f..	4	28	m f and oc	15
j 1547	Cornell, Simon, f....	3	32	m f and t	33
1501	Dickie, George, f....	3	27	m f and o	15
1502	Dickie, R W, f.....	3	27	m f and oc	15
1503	Dickie, A M, f.....	3	27	m f and oc	15

No. on Roll.	Name and Occupation.	Con.	Lot.	—	O. C.
j 1506	Edwards, George, f.	3	27	m f and o	15
		3	31	m f and t	15
		3	30	m f and o	15
1534	Edmonds, Edward, f.	3	20	m f and o	1
1535	Edmonds, Richard, f.	3	20	m f and oc	1
j 1558	Elson, R, butcher....	2	17	m f and o	1
1553	Emigh, Henry, f....	2	17	m f and o	13
1508	Edwards, Richard, f.	3	30	m f and oc	15
j 1510	Edwards, John, f....	3	31	m f and t	15
1509	Edwards, Walter, f..	3	30	m f and oc	15
1507	Edwards, Wm, f.....	3	30	m f and oc	15

j 1465	Fonger, Henry, f....	4	30	m f and t	15
j 1485	Fisher, John, f....	4	26	m f and o	15
		3	23		
j 1511	Fonger, Benjamin, f..	3	32	m f and o	33
j 1539	Fortner, Samuel B, t	3	23	m f and o	15
		3	24		
1477	Fleming, Wm, f....	3	19,20	m f and oc	13

1407	Gray, Robert Hy, f..	4,5	28	m f and oc	15
j 1406	Gray, Allan, f....	4,5	28	m f and o	15
		4	27		
j 1521	Gafeny, George, f....	3	17	m f and o	13
j 1522	Gafeny, Richard, f..	3	17	m f and o	13

Concession
ion 4 and in

20
m f and o
m f and t 15
m f and o 15
m f and o 1
m f and oc 1
n f and o 1
n f and o 13
n f and oc 15
n f and t 15
n f and oc 15
n f and oc 15

f and t 15
f and o 15
f and o 33
f and o } 15
t)
f and oc 13

f and oc 15
and o 15
and o 13
and o 13

No. on Roll.	Name and Occupation	Con.	Lot.	—	Q
j 1402	Herbert, Phillip, f.	4	24	m f and o	15
j 1401	Herbert, Sidney, f.	4	29	m f and o	15
1406	Hedges, R. R, f.	4	31	m f and o	33
1407	Hedges, Russel J, f.	4	31	m f and oc	33
1500	Heritage, Thomas, f.	2	17	m f and o	13
j 1523	Heritage, John, f.	3	17	m f and o	13
1484	Hall, Henry, f.	3	22	m f and oc	15
1546	Hoath, Robert, f.	3	31	m f and oc	33
j 1559	Hardy, Joseph, f.	2	17	m f and t	13
j 1557	Impett, Thomas, f.	{ 2 17 } { 3 17 }		m f and t	13
j 1571	Irwin, John, f.	2	23	m f and t	13
j 1519	Kingsmill, Hy. A, f.	3	16,17	m f and o	1
1397	Keays, W. G, f.	4	21	m f and o	12
1398	Keays, Robert F, f.	4	21	m f and oc	12
j 1517	Kingsmill, Thos. F, f.	3	16,17	m f and o	1
j 1518	Kingsmill, T. F, jr. f.	3	16,17	m f and o	1
j 1520	Kingsmill, Arth r, f.	3	16,17	m f and o	1
	<i>Kennedy Geo 4.21-22-23-24-25</i>				
1441	Lampard, G, laborer.	4	25	m f and oc	15
1440	Lampard, E, laborer.	4	25	m f and oc	15
j 1544	Lewis, Thomas, f.	3	26	m f and o	15
j 1439	Lampard, C, laborer.	4	25	m f and o	15

No. on Roll.	Name and Occupation.	Con.	Lot.	—	Q
j 1576	Larway, Wm, f.	2	27	m f and o	15
1493	Lewis, Samuel, f.	3	24	m f and t	15
1470	Marsh, Robert, f.	3	17	m f and o	1
1500	Morris, Robert, f.	3	26	m f and oc	15
1573	Mickleborough, J.S, f.	2	24	m f and oc	13
1570	Mickleborough, T, jr, f.	2	22	m f and oc	13
j 1486	Morris, Chris. V, f.	3	24	m f and o	15
j 1500	Morris, A. E, f.	3	26	m f and t	15
j 1540	Moralee, Wm, f.	3	23	m f and o	15
1569	Mickleborough, T, f.	2,23,26	22,23,26	m f & o	13
1496	Mooney, John, f.	3	24	m f and o	15
j 1505	McKenzie, D, f.	{ 3 20,30 } { 4 29 }		m f and o	15
j 1487	McMillan, Donald, accountant.	3	24	m f and o	15
1489	McAndless, John, f.	3	24	r. f and o	15
j 1525	McLeod, Daniel, f.	3	18	m f and o	1
1430	McKenzie, George, f.	4	23	m f and oc	15
j 1471	McGee, Alfred, f.	3	17	m f and o	13
1494	McNames, Lucian, f.	3	24	m f and o	

74

POLLING SUB-DIVISION No. 2.

No. on Roll.	Name and Occupation.	Con.	Lot.	—	P.O.
j 1541	Nixon, George, f....	3	24	m f and o	15
1540	Nixon, Everitt, f....	3	24	m f and oc	15
j 1566	O'Brien, John, f....	{ 2 20 } { 3 21 }		t m f and o	13
1567	O'Brien, Wm, f.....	2	20	m f and oc	13
1531	Pond, James, f....	3	18,19	m f and o	1
1433	Prince, Chas, laborer.	4	22	m f and o	15
1442	Parkins, J, carpenter.	4	25	m f and o	15
1414	Prince, John, laborer.	4	25	m f and t	15
j 1527	Payne, R, jr, butcher.	3	18	m f and o	13
1574	Prince, Henry, f....	2	25	m f and o	15
1434	Prince, Thos, f.....	4	24	m f and oc	15
1572	Prince, Joseph, f..	2	23, 24	m f and oc	15
j 1469	Rockett, R S, butcher.	3	17	m f and o	13
1454	Routledge, Geo A, f..	4	26	m f and oc	15
1562	Robb, Charles, f...2	17,18		m f and oc	13
1561	Robb, James, f....2	17,18		m f and o	13
1455	Routledge, Thos, f...4	26		m f and oc	15
j 1399	Routledge, Allen, f..4	22		m f and o	15
1445	Routledge, G H, f...4	25		m f and o	15
j 1401	Routledge, Geo, f...4	23		m f and o	15
1498	Rhodes, Rev Arthur, clergyman... ..	3	24	m f and o	15

No. on Roll.	Name and Occupation.	Con.	Lot.	—	P.O.
j 1403	Ramsay, Thos, f....	{ 3 23 } { 4 25 }		m f and o m f and oc	15
1404	Ramsay, Wm, f....	4	25	m f and o	15
j 1438	Routledge, Wm, f...4	25		m f and o	15
1446	Revell, Wm, f.....	4	25	m f and o	15
1448	Routledge, Robt, f..4	25		m f and o	15
1400	Routledge, Chas F, f.4	22		m f and oc	15
1533	Ramsay, James, f....	3	19	m f and oc	1
j 1453	Routledge, Isaac, f..4	26		m f and o	15
1432	Skippon, Thos, f...4	24,26		m f and o	15
1405	Skippon, Thos jr, f..4	26		m f and oc	15
j 1410	Steel, Abel, f.....	4	30	m f and o	33
1451	Sampson, S, laborer.	4	25	m f and oc	15
j 1483	Smith, John C, f....	3	21	m f and o	1
1457	Sleight, Joseph, f....	4	28	m f and oc	15
1458	Sleight, Fred, f.....	4	28	m f and oc	15
1536	Springett, Robt, f { 2 26 } { 3 22,23 }			m f and o	15
j 1538	Springett, Robt jr, f { 2 26 } { 3 22 }			m f and o	15
1537	Springett, Thos F, f..3	22		m f and oc	15
1554	Smith Thomas, f....2	17		m f and o	13
j 1565	Stiles, George F, f..2	19		m f and o	1
j 1568	Smith, Robert, f....2	21		m f and o	13
j 1504	Swift, Wm, f.....	3	28	m f and t	15
j 1512	Steinhoff, Daniel, f..3	32		m f and o	15
1450	Smith James.....	4	25	m f and t	15
1408	Tuckey, John, f....	4	29	m f and o	33
j 1460	Tuckey, John A, f..4	29		m f and o	33

No. on Roll.
j 1490 T
bl
1409 T
j 1412 T
j 1436 T

1464 V
1463 V

1432 Skippon, Thos, f...4 24,26 m f and o 15
1405 Skippon, Thos jr, f..4 26 m f and oc 15
j 1410 Steel, Abel, f..... 4 30 m f and o 33
1451 Sampson, S, laborer. 4 25 m f and oc 15
j 1483 Smith, John C, f.... 3 21 m f and o 1
1457 Sleight, Joseph, f.... 4 28 m f and oc 15
1458 Sleight, Fred, f..... 4 28 m f and oc 15
1424 V
j 1476
1431
1443
j 1468
1550
j 1530
j 1478
1435
1479
1480
j 1491
1492
j 1532
1551

t. — P.O.
 m f and o } 15
 m f and oc }
 m f and o 15
 m f and o 15
 m f and o 15
 m f and o 15
 m f and oc 15
 m f and oc 1
 m f and o 15
 m f and o 15
 m f and oc 15
 m f and o 33
 m f and oc 15
 m f and o 15
 m f and oc 15
 m f and o 1
 m f and oc 15
 m f and oc 15
 m f and o 15
 m f and oc 15
 m f and o 13
 m f and o 1
 m f and o 13
 m f and t 15
 n f and o 15
 m f and t 15
 n f and o 33
 n f and o 33

No. on Roll.	Name and Occupation.	Con.	Lot.	—	P.O.
j 1490	Tremeer, George T, blacksmith.....	3	24	m f and o	15
1409	Tuckey, Benj. F, f...4	29		m f and oc	33
j 1412	Tuckey, Chas. E, f...4	31		m f and t	33
j 1436	Tuckey, Gardiner E...4	25		m f and o	15
1464	Venner, Arthur, f...4	30		m f and oc	33
1463	Venner, Robert, f...4	30		m f and oc	33
1424	Wood, R. Shaw, f... { 3 19,20 } { 4 21,20 }			m f and o	1
j 1476	Wood, Benj. Shaw, f.3	19,20		m f and o	1
1431	Weir, James, f.....	4	24	m f and o	15
1443	Westwood, Jesse, f...4	25		m f and o	15
j 1468	Wallis, John, f.....4	32		m f and o	33
1550	Wilkinson, Jno, f...2,3	17		m f and o	13
j 1530	Wilson, David, f...3	18		m f and o	13
j 1478	Winter, Harry, f...3	21		m f and t	13
1435	Watson, J. S, f.....4	24		m f and t	15
1479	Winter, Wm, f...3	21		m f and oc	13
1480	Winter, Joseph, f...3	21		m f and oc	13
j 1491	Watson, Richard, f...3	24		m f and o	15
1492	Watson, Geo. C, f...3	24		m f and oc	15
j 1532	Wood, Robt. Shaw, f.3	19		m f and o	1
1551	Wilkinson, Wm, f...2	17		m f and oc	13

✓ 142
 8
 150

PART 2—Persons entitled to vote at Municipal Elections only:

No. on Roll.	Name and Occupation.	Con.	Lot.	—	P.O.
1462	Ashwell, D, merchant.4	29,30			o
1547	Blizard, Mrs. C.....3	32			o
1413	Boston, Robert, f...4	32			o 33
1396	Crossan, Mrs. Thos...4	20			o 13
1510	Edwards, Richard, f.3	32			o 22
1571	Elson, Peter, f.....2	23, 24			o 1
1511	Fonger, Mrs.....3	32			o 33
1504	Fuller, David, f.....3	28			o
1435	Fuller, John, f.....4	25			o
1556	Gurd, John R, broom maker.....2	17			o
1411	Harrison, Francis, f...4	31			o 33
1545	Hobbs, T.S, merchant.3	31			o
1484	Hall, John, f.....3	22			o
1488	Jaynes, Wm, f.....3	24			o 15
1456	Kennedy, John, f...4	27			o 33
1424	Kennedy, Mrs.4	21			o 15
1529	Kent, Mrs.....3	17,18			o 1

POLLING SUB-DIVISION No. 2.

No. on Roll.	Name and Occupation.	Con.	Lot.	—	P.O.
1449	Lackey, William, ex-press man	4	25		o
1447	Murch, Mrs.	4	25		o 15
1515	Marshall, Ed, gentleman	3	17		o
1510	Mitchell, Neil, f.	3	31		o
1478	Misbaumer, Chas, f.	3	21		o
1444	McLaughlin, Mrs	4	25		o 15
1462	McKenzie, Mrs.	4	29		o 15
1571	McCausland, Martha	2	23		o
1429	McKenzie, Mrs. D. G.	4	23		o 15
1395	McComb, Thomas, f.	4	20		o
1395	McComb, Thos, jr, f.	4	20		oc
1558	O'Brien, Wm, f.	2	17		o
1435	Peterson, Nelson	4	24		o
1552	Rowell, Art, policeman	2	17		o 1
1374	Scott, Robert, f.	4	21		o 15
1374	Scott, Henry A, f.	4	21		oc 15
1407	Smith, William, f.	4	28		o
1376	Scott, Donald, f.	4	21		oc 15
1407	Tuckey, Francis, f.	4	28	t	33
1462	Tuckey, John A, f.	4	29	t	15
1407	Tuckey, Cyrenius, f.	4	28	t	33
1463	Venner, Mrs.	4	30		o 33
1499	Wallis, Mrs.	3	24		o 15
1575	Wade, Jonathan, f.	2	25		o 13
1453	Wood, Benj. Shaw, f.	3	19, 20		o 1
1497	Wood, John, f.	3	24		o 13

PART 3—Persons entitled to vote at Elections to the Legislative Assembly only :

1514 Brawn, Jas, laborer... 3 32 m f
Walden Thomas 4-25 m f

1505 Cunningham, Thomas, laborer... 3 29, 30 m f

1456 Finnegan, Thomas, laborer... 4 26 m f

1548 McArthur, Malcolm, telegraph operator... 3 25 m f

1549 McGibbons, Walter, laborer... 3 25 m f

1513 Shaw, E. J, laborer... 3 32 m f
Walden Thos. 3-20 m f

Is bound
b
th

**PART 1—
Mun
Legi**

No. on Roll.

j 1317 A

1354 A

j 1220 A

j 1256 A

1204 C

j 1283 C

1350 C

j 1369 C

1284 C

1356 C

1205 C

Lot. —
 28 t 33
 29 t 15
 28 t 33

POLLING SUB-DIVISION No. 3

Is bounded on the north by the centre of Concession Eight, on the east by the line between Lots Nos. 19 and 20, on the south by the Fifth Concession line, and on the west by Lobo. Polling Place—North half of Lot 24, Con. 6.

PART 1—Persons entitled to vote at both Municipal Elections and Elections to the Legislative Assembly :

No. on Roll.	Name and Occupation.	Con.	Lot.	—	P.O.
j 1317	Armstrong, John, f.	{ 6	27	m f and o	} 15
		{ 6	27, 28	m f and t	
	1354 Alder, Thomas, f.	5	32	m f and o	33
j 1220	Abray, George, f.	7	22, 23	m f and o	11
j 1256	Abray, Peter, f.	7	23	m f and o	11

No. on Roll.	Name and Occupation.	Con.	Lot.	—	P.O.
j 1251	Dewar, Percy, f	7	20	m f and o	11
j 1300	Day, Edward, f.	6	29	m f and o	33

	1341 Edwards, George, f.	5	24	m f and oc	15
j 1259	Eedy, Richard, f.	6, 7,	26	m f and t	16
j 1306	Earn, Robert, f.	6	32	m f and t	33

te at Elections only :

m f
Mc F

m f

1204	Calvert, Robert, f.	8	29, 30	m f and o	17
------	-----------------------------	---	--------	-----------	----

j 1283	Connor, Thos. W, f.	{ 5	23	} m f & o & t	11
		{ 6,	7, 20		

1350	Collver, Elias, f.	5	32	m f and o	33
------	----------------------------	---	----	-----------	----

j 1369	Connor, John H, f.	5	23, 25	m f and o	15
--------	----------------------------	---	--------	-----------	----

1284	Connor, Charles, f.	6	20	m f and oc	11
------	-----------------------------	---	----	------------	----

1356	Clare, James, f.	5	32	m f and oc	33
------	--------------------------	---	----	------------	----

1205	Calvert, Wm. Fred, f.	8	29, 30	m f and oc	17
------	-------------------------------	---	--------	------------	----

m f

j 1267	Gray, Carling, f.	7	30	m f and o	33
--------	---------------------------	---	----	-----------	----

1318	Gray, Robert J, f.	6	28	m f and oc	15
------	----------------------------	---	----	------------	----

1344	Gray, James, f.	5	26	m f and o	15
------	-------------------------	---	----	-----------	----

1345	Gray, John B, f	5	26	m f and oc	15
------	---------------------------	---	----	------------	----

j 1346	Gray, George B, f.	5	27	m f and o	15
--------	----------------------------	---	----	-----------	----

1386	Graham, Dan, black-smith.	5	32	m f and o	33
------	-----------------------------------	---	----	-----------	----

1387	Graham, Norris, black-smith.	5	32	m f and oc	33
------	--------------------------------------	---	----	------------	----

m f

m f
Mc F

No. on Roll.	Name and Occupation.	Con. Lot.	—	O. R.
j 1197	Hodgins, Thos, f...8	24,25	m f and o	16
j 1368	Hartson, Daniel, f...5	22	m f and o	15
j 1339	Higgs, Albert, f...5	20,21	m f and t	13
j 1217	Howe, Robert, f....7	21	m f and t	11
	1198 Hodgins, Arch L, f...8	24	m f and oc	16
	1311 Heal, John, f.....6	22	m f and oc	15
j 1348	Jaynes, William, f..5	29	m f and o	33
	1353 Jaynes, James, f....5	32	m f and o	33
	1388 Jaynes, Alonzo, f...5	32	m f and o	33
j 1301	Jones, William, f..6	30,31	m f and oc	33
	1371 Keyser, R J, f.....5	23	m f and t	15
j 1293	Kennedy, Geo S, f. { 6 25 } { 7 24 }		m f and o	16
j 1258	Kennedy, James, f..7	25	m f and o	16
	1342 Keays, Thos S, f. { 32 } { 5 22,25 }		m f and o	15
	1375 Kennedy, John, f....5	29	m f and o	33
j 1376	Kennedy, Robt W, f.5	29	m f and o	33
	1343 Keays, Geo W, f....5	25	m f and oc	15
j 1377	Kennedy, Wm H, f..5	29	m f and o	33
	1294 Kennedy, Robert, f..6	25	m f and oc	16
	1261 Long, John, f.....7	28	m f and o	16
	1262 Long, George, f.....7	28	m f and oc	16
j 1347	Long, David, f.....5	28	m f and o	33
j 1364	Lipsett, Francis, f...5	21	m f and o	12
	1383 Long, Henry, laborer.5	32	m f and oc	33
j 1309	Lill, George, f.....6	20	m f and t	11
	1295 Lord, Joseph, f.....6	25	m f and oc	16

No. on Roll.	Name and Occupation.	Con. Lot.	—	O. R.
j 1195	Miller, Thomas, f.. { 7 27 } { 8 23 }		m f and o	11
j 1199	Morrow, Thomas, f..8	26	m f and o	17
j 1229	Mann, Alexander, f..7	28	m f and o	17
j 1298	Miller, William, f...6	28	m f and o	33
	1373 Mason, Thomas, f...5	28	m f and o	15
	1196 Miller, Alfred, f.....8	23	m f and oc	11
j 1227	Mitchell, George, f..7	26	m f and t	17
j 1374	Mason, Thos jr, f...5	28	m f and o	15
	1299 Miller, John, f.....6	28	m f and oc	33
j 1319	Miller, Thomas, f...6	28	m f and o	15
	1339 Morden, John, f....5	22	m f and t	15
	1255 Morden, J P, clergyman.....7	22	m f and o	11
	1351 Marsden, Fred H, f..5	32	m f and o	33
j 1257	Morden, Edgar N, f..7	23	m f and o	11
	1213 McNaughton, D, f...7	20	m f and o	11
	1214 McNaughton, Wm, f..7	20	m f and oc	11
j 1268	McIntyre, Peter G, f.7	32	m f and o	33
	1332 McIntyre, Robert, f..6	32	m f and oc	33
	1215 McNaughton, Jno, f..7	20	m f and oc	11
j 1297	McKenzie, John, f...6	25	m f and o	16
j 1218	Needham, Chas, f...7	22	m f and o	11
	1252 Nixon, William, f....7	21	m f and o	11
	1253 Nixon, Wm J, f.....7	21	m f and oc	11
	1191 Needham, Wesley, f..8	20	m f and oc	11
j 1286	Nixon, Robert, f....6	21	m f and t	11
	1203 Pazman, Wm, f....8	28	m f and oc	17
j 1363	Piper, Wm, f.....5	20	m f and o	12
j 1330	Quinney, Mark, f..6	30,31	m f and t	33

No. on Roll.
1192 F
1193 F
1194 F
1230 F
j 1206 F
j 1207 F
j 1314 F
1231 F
1232 F
j 1340 F
1233 F
1234 F
1310 F
1201
j 1221
j 1254
j 1302
j 1313
j 1329
1365
1366
j 1381
j 1382
j 1385
1222
1223

POLLING SUB-DIVISION No. 3.

13

Lot.	—	P.O.	No. on Roll.	Name and Occupation.	Con.	Lot.	—	P.O.
27	t	11	1192	Richardson, Geo, f.	.8	21,22	m f and o	11
23	m f and o	17	1193	Richardson, Chas, f.	.8	21,22	m f and oc	11
26	m f and o	17	1194	Richardson, Alf, f.	.8	21,22	m f and oc	11
28	m f and o	17	1230	Robson, John, f.	{ 7 29,30 8 29 }		m f and o	17
28	m f and o	33	j 1206	Robson, Joseph, f.	{ 7 31 8 31 }		m f and o	17
28	m f and o	15	j 1207	Robson, Jere, f.	{ 7 31 8 32 }		m f and o	33
23	m f and oc	11	j 1314	Robson, David, f.	.6	25	m f and t	15
26	m f and t	17	1231	Robson, Henry, f.	.7	30	m f and oc	17
28	m f and o	15	1232	Robson, John F, f.	.7	30	m f and oc	17
28	m f and o	15	j 1340	Robb, Wm, f.	.5	23	m f and t	15
22	m f and t	15	1233	Robson, Geo. W, f.	.7	30	m f and oc	17
22	m f and o	11	1234	Robson, Chas. R, f.	.7	30	m f and oc	17
22	m f and o	33	1310	Rowell, John, f.	.6	22	m f and o	15
23	m f and o	11	1201	Scott, Henry, f.	.8	28	m f and o	17
0	m f and o	11	j 1221	Smith, Richard H, f.	.7	24	m f and o	16
0	m f and oc	11	j 1254	Smith, L. W, f.	.7	22	m f and o	11
2	m f and o	33	j 1302	Sells, Benj. D, f.	.6	30,31,32	m f and o	33
2	m f and oc	33	j 1313	Smith, Crowell W, f.	.6	24	m f and o	15
0	m f and oc	11	j 1329	Steel, John, f.	.6	30,31	m f and o	33
5	m f and o	16	1365	Scott, Robert, f.	.5	22	m f and o	15
2	m f and o	11	160 1366	Scott, Henry A, f.	.5	22	m f and oc	15
0	m f and o	11	j 1381	Steel, Philip, f.	.5	31	m f and o	33
0	m f and oc	11	j 1382	Steel, Anthony, f.	.5	32	m f and o	33
0	m f and oc	11	j 1385	Sanders, Caleb, f.	.5	32	m f and o	33
0	m f and oc	11	1222	Smith, David F, f.	.7	24	m f and oc	16
0	m f and t	11	1223	Smith, Richard O, f.	.7	24	m f and oc	16

No. on Roll.	Name and Occupation.	Con.	Lot.	—	P.O.
j 1372	Sloan, Hugh, f.	.5	24	m f and o	15
1312	Smith, Thos, jr, f.	.6	22	m f and oc	13
1303	Sells, David H, f.	.6	31	m f and oc	33
1307	Scott, Donald, f.	.5	22	m f and oc	15
j 1210	Stoneman, John, f.	.7	20	m f and t	11
1211	Stoneman, Ashton, f.	.7	20	m f and oc	11
1304	Sells, T. Wm, f.	.6	31	m f and oc	33
1212	Stoneman, Wm, f.	.7	20	m f and oc	11
1380	Tuckey, Geo. H, f.	.5	50	m f and oc	33
j 1263	Tummonds, C, f.	{ 6,7 29 6 30 7 28 }		m f and o t	33
1291	Thompson, Alex. J, f.	.6	21,24	m f and o	16
1292	Thompson, A. A, f.	.6	24	m f and oc	16
1320	Tuckey, Francis, f.	.6	29	m f and o	33
1323	Tuckey, Wm. A, f.	.6	29	m f and oc	33
1321	Tuckey, Robert L, f.	.6	29	m f and oc	33
1322	Tuckey, Cyrenius, f.	.6	29	m f and oc	33
j 1378	Tuckey, James, f.	.5	30	m f and o	33
j 1289	Turner, John, f.	.6	23	m f and o	16
j 1265	Tummonds, And'w, f.	.7	29	m f and t	33
j 1266	Tummonds, C, jr, f.	.7	29	m f and t	33
1379	Tuckey, Robt. H, f.	.5	30	m f and oc	33
j 1285	Taylor, George, f.	.6	21	m f and o	11
1324	Tuckey, Alfred, f.	.6	29	m f and oc	33
1219	Townsend, Wm, f.	.7	22	m f and oc	11
1290	Turner, Wm. E, f.	.6	23	m f and oc	16
30					
j 1349	Williams, Fred J, f.	.5	30	m f and o	33
j 1200	West, John, f.	.7,8	26,27	m f and o	17
j 1316	Winter, Joseph, f.	.6	26,27	m f and t	15
1287	Westlake, George, f.	.6	22	m f and o	11
j 1226	Wood, George, f.	.7	25	m f and t	16
1288	Westlake, Manuel, f.	.6	22	m f and oc	11
1384	Walker, Edward, f.	.5	32	m f and t	33

PART 2—Persons entitled to vote at Municipal Elections only :

No. on Roll.	Name and Occupation.	Con.	Lot.	—	P.O.
1355	Barclay, E. R, merchant.....	5	33	t	33
1326	Brown, George, f.....	6	30	o	1
1325	Brown, Thomas, f.....	6	30	o	1
1327	Brown, John, f.....	6	30	o	1
1216	Bere, Joseph, f.....	7	21	o	
1328	Brown, Tom, f.....	6	30	o	1
1225	Cummings, Geo, f.....	7	25	o	
1224	Cummings, Mrs.....	7	25	o	
1341	Edwards, Mrs.....	5	24	o	
1236	Ferguson, John, f.....	7	32	t	
1300	Gray, Wm. John, f...6	30, 31		o	
1315	Graham, Chris, f....6	26, 27		o	1
1317	Gray, James, f.....6	28		o	15
1300	Graydon, Mr.....6	30		o	
1348	Jaynes, Mrs.....5	29		o	
1228	McIntyre, Hugh, f...7	27		o	22
1228	McIntyre, Hugh, f...7	27		t	22

No. on Roll.	Name and Occupation.	Con.	Lot.	—	P.O.
1250	McComb, W. J, merchant.....	7	20	o	1
1264	McAdams, Jno, livery-man.....	6, 7	29	o	1
1235	McColl, Malcolm, f...7	32		o	22
1269	McIver, Hugh, f.....7	32		o	21
1270	McIver, Wm, f.....7	32		oc	21
1199	Nichol, John, f.....8	26		t	17
1260	Robson, Reginald, f .7	27		o	
1297	Routledge, Henry, f..6	27		o	1
1323	Scott, Henry, f.....6	30, 31		o	
1331	Sells, David, f.....6	32		o	33
1202	Scott, James, f.....8	28		o	
1305	Stephenson, Thos, f..6	32		o	
1309	Taylor, Mrs. James..6	20		o	1
1339	Warner, Mrs.....5	20, 21		o	
1194	West, Alfred, f.....8	22		oc	
1194	West, Peter, f.....8	22		oc	

PART 3—Persons entitled to vote at Elections to the Legislative Assembly only :

NONE.

Is made

**PART 1
Mu
Leg**

No. on Roll.
j 981 A
1016 A
j 982 A

1074 B
1032 B
1033 B
j 1182 B
1127 B
j 1080 B
1088 B
j 1082 B
1124 B

955 C
956 C
957 C

POLLING SUB-DIVISION No. 4

Is made up of that part of the Township west of the Proof Line, between the centre of Concessions 8 and 12, excepting Lots 17, 18 and 19, in Concessions 9, 10 and south half of 11, and the north half of Concession 8, and the south halves of Lots 17, 18, 19 and 20, in Concession 12, and north halves of Lots 17, 18, 19 and 20, in Concession 11. Polling Place—Wm. Patrick's office, Ilderton.

PART 1—Persons entitled to vote at both Municipal Elections and Elections to the Legislative Assembly.

No. on Roll.	Name and Occupation	Con.	Lot	—	P.O.
j 981	Armstrong, Jas, 1	11	27	m f and o	24
	1016 Armstrong, Rich, f.	11	26	m f and o	24
j 982	Armstrong, Len'd f.	11	27	m f and o	24

	1074 Bowey, Peter, f.	10	26	m f and o	24
	1032 Bowman, Ant'ny, f.	10	21	m f and o	24
	1033 Bowman, John, f.	10	21	m f and o	24
j 1182	Baty, Arthur W, f.	8	30	m f and o	17
	1127 Broek, W. H, f.	9	27	m f and oc	24
j 1080	Beamish, Rich'd, f.	10	26	m f and o	24
	1088 Brettle, Chas, f.	10	27	m f and oc	24
j 1082	Brettle, Thos, f.	10	27	m f and t	24
	1124 Barr, James, f.	9	25	m f and oc	24

Bush Henry 9.23. m f and o

	955 Calvert, John, f.	12	30	m f and o	24
	956 Calvert, Edw. C, f.	12	30	m f and oc	24
	957 Calvert, Robt. L, f.	12	30	m f and oc	24

No. on Roll.	Name and Occupation.	Con.	Lot.	—	P.O.
j 1038	Charlton, Wm, f.	10	23	m f and o	24
	1068 Clarke, Joshua, f.	10	26	m f and o	24
j 1045	Clatworthy, Thos, lumber dealer	10	11, 25	m f and o	24
	1104 Cattermole, Chas, f.	10	26, 27	m f and oc	24
	1144 Charlton, Edw, f.	9	26	m f and oc	24
j 946	Charlton, Lewis, f.	12	22	m f and t	24
	1056 Colbert, George, f.	10	25	m f and t	24
	1066 Charlton, Bert, f.	9, 10	26	m f and o	24
	1151 Calvert, Wm, f.	9	29	m f and oc	17
	977 Charlton, Fred, f.	11	24	m f and oc	24
	989 Cameron, Melv, f.	11	31	m f and oc	24
j 978	Charlton, Fl'ehr, f.	11	25	m f and o	24
j 976	Charlton, Joseph, f.	11	24	m f and o	24
	1039 Charlton, Ern't E, f.	10	23	m f and oc	24
	1046 Clatworthy, A. J, f.	10	25	m f and oc	24

j 1023	Douglas, Edward, f.	11	30	m f and o	24
j 1024	Douglas, Walter, f.	11	30	m f and o	24
j 1026	Dodd, Thomas, f.	11	31	m f and o	24
j 1087	Douglas, Robt, f.	10	30	m f and o	24
j 1025	Douglas, John, f.	11	30	m f and t	24

	1062 Frith, William, f.	10	25	m f and o	24
	1137 Fraser, Alex, f.	9	20	m f and oc	11
	1134, Fraser, Angus, f.	9	32	m f and o	21

Francis James m f and o

No. on Roll.	Name and Occupation.	Con.	Lot.	—	E.O.
974	Goulding, Chas, f...	11	23	m f and oc	24
975	Goulding, Jos, f...	11	23	m f and oc	24
970	Haskett, John, f...	11	21	m f and o	10
j 951	Hartwick, Ab'hm, f.	12	26	m f and o	24
958	Hord, Mark, f.....	12	31	m f and o	24
j 983	Hord, James, f.....	11	28	m f and o	24
1000	Hughes, Jos. C, f	$\left. \begin{array}{l} 10 \ 19, 20 \\ 11, 20 \end{array} \right\}$		m f and o	24
1001	Hughes, A. C, f....	11	21	m f and o	24
j 1002	Hughes, T. P, f....	11	21	m f and o	24
1035	Hodgins, Bobt, f	10	22	m f and o	24
1036	Hodgins, Geo. B, f.	10	22	m f and oc	24
1099	Hughes, John, f....	10	23	m f and o	24
1037	Hodgins, R. W, f...	10	22	m f and oc	24
j 1103	Hughes, Leon'd, f.	10	25	m f and o	24
j 1122	Hughes, R. T, f.....	9	22, 23	m f and o	24
971	Haskett, Thos. H, f.	11	21	m f and oc	10
1053	Hall, Albert, f....	10	25	m f and oc	24
1142	Harrison, Herbert, f..	9	24	m f and oc	24
1047	House, Gilbert, f....	10	25	m f and t	24
j 1139	Hodgins, Ab'hm, f..	9	22, 23	m f and t	24
1011	Hodgins, Edgar, f.	11	25	m f and t	24
j 1107	Higgs, Reuben, f.	10	29	m f and t	24

th

No. on Roll.	Name and Occupation.	Con.	Lot.	—	E.O.
j 1071	Ironside, Elisha, wagon maker.....	10	26	m f and o	24
j 1138	Jackson, R. W, f...	9	21	m f and o	11
j 1121	Jackson, Thos. E, f..	9	21	m f and o	11
j 1105	Johnson, Thos, f...	10	27	m f and t	24
996	Kennedy, John, f	$\left. \begin{array}{l} 10 \ 20 \\ 11 \ 19, 20 \end{array} \right\}$		m f and o	24
997	Kennedy, Jas, f....	11	19, 20	m f and oc	24
998	Kennedy, Wm, f....	11	19, 20	m f and oc	24
j 1141	Kennedy, Geo. B, f..	9	24	m f and o	24
999	Kennedy, Aug, f....	11	19, 20	m f and oc	24
1009	Knight, George W, station agent.	11	25	m f and o	24
j 1066	Kennedy, Alba, f....	10	20	m f and o	24
1042	Little, Robert, f....	10	25	m f and o	24
j 1005	Little, John A, f....	11	24	m f and o	24
1054	Lipsett, George, f.	10	25	m f and o	24
j 1143	Loft, Henry, f.....	9	25	m f and o	24
j 1178	Loft, John, f.....	8	25	m f and o	24
1043	Little, Robert H, f..	10	25	m f and oc	24

No. on Roll.	Name and Occupation.	Con.	Lot.	—	E.O.
j 1086	Ma				
j 1085	Ma				
1014	Me				
1015	Me				
1044	Ma				
j 1120	Me				
1050	Mu				
1098	Me				
j 960	Me				
1006	Me				
1020	Me				
j 1019	M				
1040	M				
1041	M				
j 1055	M				
1061	M				
1096	M				
j 1108	M				
1131	M				
j 1132	M				
1133	M				
1007	M				
961	M				
1021	M				
1097	M				
962	M				
1100	M				
1150	M				

POLLING SUB-DIVISION No. 4.

17

ot. — P.O.
 26 m f and o 24
 1 m f and o 11
 1 m f and o 11
 27 m f and t 24
 } m f and o 24
 20 m f and oc 24
 20 m f and oc 24
 4 m f and o 24
 20 m f and oc 24
 5 m f and o 24
 0 m f and o 24
 5 m f and o 24
 m f and o 24
 5 m f and o 24
 m f and o 24
 m f and o 24
 m f and o 24
 m f and oc 24

No. on Roll.	Name and Occupation.	Con.	Lot.	P.O.
j 1080	Martin, Theo. H, f.	10	20	m f and o 24
j 1085	Martin, John G, f.	10	29	m f and o 24
1014	Metcalfe, Henry, f.	11	26	m f & t & o 24
1015	Metcalfe, Wm, f.	11	26	m f and oc 24
1044	Madden, Henry, f.	10	25	m f and t 24
j 1120	Morrow, John, f.	9	20	m f and t 11
1050	Munce, Samuel, f.	10	25	m f and o
1098	McPherson, Jas, f.	10	21,22	m f and oc 24
j 960	McIntosh, Gilbt, f.	12	32	m f and o 19
1006	McAndless, F, M. D.	{ 10 27 11 25 }		m f and o 24
1020	McRae, Donald, f.	11	28	m f and o 24
j 1019	McRae, Arthur, f.	{ 11 27 11 28 }		{ o m f and oc } 24
1040	McAndless, Wm, f.	10	24	m f and o 24
1041	McAndless, W. E, f.	10	24	m f and oc 24
j 1055	McDonald, John, f.	10	25	m f & t & o 24
1061	McRae, J. H, meroh't.	10	25	m f and o 24
1096	McPherson, Jno, f.	{ 9 22 10 21,22 }		m f & o 24
j 1108	McLean, Alex, f.	10	30	m f and o 24
1131	McQueen, Angus, f.	9	31	m f and o 21
j 1132	McQueen, John, f.	9	31	m f and o 21
1133	McQueen, W. J, f.	9	31	m f and oc 21
1007	McAndless, F. W, f.	11	25	m f and oc 24
961	McIntosh, Wm. T, f.	12	32	m f and oc 19
1021	McRae, James, f.	11	28	m f and oc 24
1097	McPherson, Arch, f.	10	21,22	m f and oc 24
962	McIntosh, Jas. L, f.	12	32	m f and oc 19
1109	McLean, Chas, f.	10	30	m f and oc 24
1150	McDonald, Jno. A, f.	9	29	m f and oc 17

No. on Roll.	Name and Occupation.	Con.	Lot.	P.O.
j 1180	Noble, John, f.	8	27	m f and o 17
1169	Nixon, George, f.	8	20	m f and o 11
1170	Nixon, Walter, f.	8	20	m f and oc 11
j 1172	Nixon, George E, f.	8	21,22	m f and o 11
1175	Nichol, William, f.	8	24	m f and o 24
1176	Nichol, John W, f.	8	24	m f and oc 24
1177	Nichol, Henry, f.	8	24	m f and oc 24
1069	Oliver, Thomas, f.	10	26	m f and o 24
j 1130	O'Neil, John S, f.	9	29	m f and t 24
1070	Oliver, Geo. Wm, f.	10	26	m f and oc 24
972	Patrick, Geo, f.	11	22	m f and o 24
979	Paisley, Samuel, f.	11	26	m f and o 24
j 980	Paisley, James, f.	11	26	m f and o 24
j 1003	Patrick, Joseph, f.	11	22	m f and o 24
j 1017	Paisley, Fenton, f.	11	26	m f and o 24
j 1064	Paisley, John, f.	10	26	m f and t 24
1100	Porter, John, f.	10	24	m f and o 24
1101	Porter, Edward, f.	10	24	m f and oc 24
1077	Paisley, Thomas, f.	10	26	m f and o 24
j 1106	Paisley, Leonard, f.	10	29	m f and o 24
1102	Porter, John, jr, f.	10	24	m f and oc 24
973	Patrick, Benj, f.	11	22	m f and oc 24
Paisley Robert. 11-26 1874 B				

No. on Roll.	Name and Occupation.	Con. Lot.	—	P.O.
1126	Robinson, Alb. W.	f.9 26	m f and oc	24
j 947	Reeve, Thomas, f.	12 23	m f and o	24
j 948	Reeve, Walker, f.	12 24	m f and o	24
954	Robson, Andrew, f.	12 28,29	m f and o	24
952	Robson, Robt. F, f.	12 28	m f and oc	24
953	Robson, W. W, f.	12- 28	m f and oc	24
j 1022	Robb, Alexander, f.	11 29	m f and o	24
1027	Robson, Arthur, f.	11 32	m f and o	21
1028	Robson, Lionel, f.	11 32	m f and oc	21
1091	Robson, John W, f	10 32	m f and o	21
1092	Robson, Adam, f.	10 32	m f and oc	21
j 1034	Rowe, James B, f.	{ 10 26 t } { 10 21 m f and t }		24
1113	Robson, Thomas, f.	10 32	m f and oc	21
j 1112	Robson, Bart, f.	10 32	m f and o	21
j 1128	Ross, James, f.	9 28	m f and o	24
1060	Robson, Albert, f.	10 25	m f and oc	24
1114	Robson, John T, f.	10 32	m f and oc	21
1129	Ross, John, f.	9 28	m f and oc	24
j 1148	Robson, Robert A, f.	9 28	m f and t	17
1059	Routledge, Jos, f.	10 25	m f and t	24
j 1154	Randall, Benj, f.	9 31,32	m f and o	17
j 1095	Rowe, Wm, f.	10 21,26	m f and t	24
j 1125	Robinson, Wm. J, f.	9 26	m f and o	24
1155	Randall, Fred, f.	9 31	m f and oc	17
1075	Robson, Robt. C, f.	10 26	m f and oc	24
j 1110	Robson, W. J, f.	10 31	m f and o	21

ok.

No. on Roll.	Name and Occupation	Con. Lot.	—	P.O.
992	Scott, Thos. B, f.	11 32	m f and o	21
1050	Smith, Coral, laborer	10 25	m f and t	24
j 1004	Skinner, James, f.	11 23	m f and o	24
1018	Slack, E'wd, lumber-man.	11 26	m f and t	24
1072	Story, Henry, f.	10 26	m f and t	24
j 1088	Scott, Andrew B, f.	10 31	m f and o	21
1089	Scott, Thomas A, f.	10 31	m f and oc	21
j 1156	Scott, Richard H, f.	9 32	m f and o	21
1171	Swarts, Henry, f.	8 21	m f & t & o	11
1183	Scott, George, f.	8 31,32	m f and o	24
1184	Scott, George A, f.	8 31,32	m f and oc	24
j 1084	Scott, Andrew, f.	10 27	m f and o	24
1185	Scott, W. H, f.	8 31,32	m f and oc	24
j 1110	Scott, Zach. W, f.	10 31	m f and o	21
1008	Swarts, Wm, shoe-maker	11 25	m f and t	24
j 1012	Stilson, Jno. W, hotel keeper	11 26	m f and t	24
1051	Smith, Joseph W, laborer	10 25	m f and oc	24
j 1013	Scandrett, J a c o b, hotel keeper	11 26	m f and t	24
1146	Telfer, Adam O, f.	9 27,28	m f and oc	17
j 1152	Telfer, Wm. H, f.	9 30	m f and o	17
1149	Telfer, Wm. O, f.	9 29	m f and o	17
j 1181	Taylor, James, f.	8 29	m f and o	17
1145	Telfer, Robert, f.	9 27,28	m f and o	24
j 1153	Telfer, Adam B, f.	9 30	m f and o	17
950	Taylor, Wm, f.	12 25,26	m f and oc	24

76

j 949 W
984 W
985 W
986 W
1057 W lab
j 1123 W
1124 W
1174 W
987 W
1058 W
959 W
988 W
1173 W
j 1179 W

PART 2
Ele

946 E
1060 E

1122 C
990 C
991 C
1111 C
1048 C
989 C
1004 C
1144 C
1065 C

POLLING SUB-DIVISION - No. 4.

19

Lot. — P.O.
 32 m f and o 21
 25 m f and t 24
 23 m f and o 24
 26 m f and t 24
 26 m f and t 24
 31 m f and o 21
 31 m f and oc 21
 32 m f and o 21
 21 m f & t & o 11
 31,32 m f and o 24
 31,32 m f and oc 24
 27 m f and o 24
 31,32 m f and oc 24
 31 m f and o 21
 25 m f and t 24
 26 m f and t 24
 25 m f and oc 24
 26 m f and t 24
 7,28 m f and oc 17
 30 m f and o 17
 29 m f and o 17
 29 m f and o 17
 28 m f and o 24
 30 m f and o 17
 26 m f and oc 24
 1067 Detray, Mrs. 10 26

No. on Roll.	Name and Occupation.	Con.	Lot.	—	P.O.
j 949	Walker, Grah'm f.	(11 25) (12 25,26)	m f and o	24	
984	Whillans, Robt, f.	.11 29,30	m f and o	24	
985	Whillans, W. T, f.	.11 29,30	m f and oc	24	
986	Whillans, Thos, A, f.	.11 29,30	m f and oc	24	
1057	Woodhall, Joseph, laborer	10 25	m f and o	24	
j 1123	West, William, f.	.9 25	m f & o & t	24	
1124	West, George, f. 9 25	m f and oc	24	
1174	West, Alfred, f. 8 23	m f and oc	24	
987	Whillans, John O, f.	.11 29,30	m f and oc	24	
1058	Woodhall, Jno, laborer	10 25	m f and oc	24	
959	Wilson, Alfred, f. 12 31	m f and oc	24	
988	Whillans, Jas. A, f.	.11 29,30	m f and oc	24	
1173	West, Peter, f. 8 23	m f and oc	24	
j 1179	Weir, Robert, f. 8 26	m f and o	24	
<p>1895 196 PART 2—Persons entitled to vote at Municipal Elections only.</p>					
946	Beggs, Wm, f. 12 22		o	
1060	Bullman, J, f. 10 25		o	
1122	Colbert, John, f. 9 24		t	
990	Calvert, Robt. L, f.	.11 31		o 24	
991	Calvert, Ed. C, f. 11 31		o 24	
1111	Caverhill, Wm. A, f.	.10 32		o	
1048	Copeland, Mary.	10 25		o 24	
989	Cameron, Mrs	11 31		o	
1004	Charlton, Wm, f	11 23		o	
1144	Charlton, Bart, f.	9 26		o	
1065	Cattermole, Chas, f.	10 26		oc	
1067	Detray, Mrs.	10 26		o 24	

No. on Roll.	Name and Occupation.	Con.	Lot.	—	P.O.
1078	Rdwards, Margaret.	.10 26		o	24
1120	Grant, Alex, merchant.	.9 20		o	
974	Goulding, Mrs. J.	11 23		o	
1049	Guthrie, Mrs.	10 25		o	
958	Hord, James, f.	12 31		o 24	
1052	Hall, Mrs. H.	10 25		o 24	
1031	Hughes, Mrs. A. L.	10 20		o 24	
1094	Hodgins, Thos, f.	9 24		t 16	
1124	Loft, Eliza A.	9 25		o	
1085	McNaughton, D, f.	10 28		o	
1147	McIntosh, Alex, f.	9 28		o	
1081	McAndless, C. B, f.	10 27		o	

POLLING SUB-DIVISION No. 4.

No. on Roll.	Name and Occupation.	Con. Lot.	P.O.	No. on Roll.	Name and Occupation.	Con. Lot.	P.O.
1110	Needham, Chas, f....	9 20	t	1055	Telfer, Mrs.....	10 25	o 24
1150	Nichol, Thos. W, f...8	26	o	1059	Tindle, Richard, f..	10 25	o
1137	Nixon, Walter, f....	9 20	o				
1137	Nixon, George, f....	9 20	o				
1063	Paisley, S. W, f....	10 26	o	1090	Waugh, Mrs,.....	10 31	o 21
978	Paisley, James, f....	11 26	t	1130	Wilson, James, V.S..	9 29	o
987	Patrick, Wm, f...10,11	26	o	1010	Whillans, Mrs.....	11 25	o
1047	Paisley, John, f....	10 25,26	o	1157	Wood, Wm, f.....	9 32	t
978	Paisley, Leonard, f...11	26	o 24				
1107	Paisley, Thos, f.....	10 27,29	o				
1018	Paisley, Robt, f.....	11 26,27	o				
1072	Paisley, John, f....	10 26,27	o				
1076	Robson, Mrs.	10 26	o 24.	PART 3—Persons entitled to vote at Elections to the Legislative Assembly only: <i>Henry, Jno, laborer..10 26 m f</i> <i>Higginbottom George 10.25 m f</i> <i>Fraser James 9.20 - m f</i>			
1103	Robson, Bart, f.....	9 32	o 21				
951	Robson, James, f....	12 27	o				
1014	Shanklin, George, f..11	26	o	1013	Norton, B, laborer..11	26	m f 24
1073	Stephenson, Mrs....	10 26	o				
1157	Scott, Richard H. f..9	32	o				

Is ma
PART
M
Le
No. on Roll.
j 795 A
913 A
j 906 A
j 837 A
776 B
dea
j 847 B
j 881 B
775 B
792 B
j 888 C
j 907 C
788 C
870 C
911 C
725 I
j 839 I
726 I
8

POLLING SUB-DIVISION No. 5

Is made up of that part of the Township north of the centre of Concession Twelve and west of the side road between Lots 20 and 21, excepting the north half of Lot 21 in the 12th and the south half of Lot 21 in the 13th Concession. Polling Place—Robert Orr's house, Denfield.

PART I—Persons entitled to vote at both Municipal Elections and Elections to the Legislative Assembly :

No. on Roll.	Name and Occupation.	Con.	Lot.	—	P.O.
j 705	Ab ray, William, f.	15	29	m f and o	18
913	Akister, John, f.	13	30	m f and o	24
j 906	Attwood, Chas, f.	12	27	m f and t	24
j 837	Ab ray, Albert, f.	14	24	m f and t	18

776	Brazel, David, grain dealer.	15	29	m f and o	18
j 847	Bell, Andrew, f.	14	32	m f and o	18
j 881	Barling, Edward, f.	13	24	m f and o	24
775	Browning, Chas, f.	15	27,28	m f and oc	18
792	Barling, P Dell, f.	15	28	m f and t	18

j 888	Cranston, James, f.	3	30	m f and o	18
j 907	Charlton, Wesley, f.	13	26,27	m f and o	24
788	Caspell, James, f.	15	28	m f and t	18
870	Clarke, Wm, f.	14	31	m f and oc	18
911	Coultham, Henry, f.	13	29,30	m f and oc	24

725	Donnelly, James, f.	13	21	m f and o	9
j 839	Donnelly, John T, f.	14	26	m f and o	18
726	Donnelly, Jas A, f.	16	21	m f and oc	9

727	Donnelly, Wm H, f.	16	21	m f and oc	9
728	Donnelly, Chris, f.	16	21	m f and oc	9
804	Duplan, Chas, f.	15	29	m f and t	18
803	Davidson, John, f.	15	29	m f and o	18
j 800	Dundas, John, f.	15	29	m f and t	18

j 783	Edwards, John, f.	15	28	m f and o	18
-------	---------------------------	----	----	-----------	----

798	Fitches, George, f.	15	29	m f and o	18
882	Freeborn, Thos, f.	13	25,26	m f and o	18
766	Fulton, Samuel, f.	15	23	m f and o	18

j 740	Gibson, John, f.	16	25	m f and o	18
-------	--------------------------	----	----	-----------	----

Lot. — P.O.
0 25 o 24
0 25 o

31 o 21
29 o
25 o
32 t

vote at Elections
only:
11-30 M⁴
26 m f
10-25 M⁴
0 - M⁴

26 m f 24

No. on Roll.	Name and Occupation.	Con.	Lot.	—	O R
	784 Hodgins, Jas. F, f. .15	28	m f and o	18	
j	729 Hodgins, Wm, f. .16	21,22	m f and o	25	
j	741 Haskett, Chas. E, f.16	26	m f and o	18	
	742 Haskett, Thos, f. .16	26	m f and o	18	
	743 Haskett, Thos. A, f.16	26	m f and oc	18	
j	777 Hodgson, Isaao, f. .15	31,30	m f and o	18	
j	785 Hodgins, John, f. .15	28	m f and o	18	
	817 Hodgins, Jas. A, f. .15	25	m f and o	18	
j	876 Hodgins, John R, f.13	21	m f and o	39	
	818 Hodgins, Ralph, f. .15	25	m f and oc	18	
	860 Hodgins, Wm. J, f. .14	24	m f and oc	18	
	914 Hedley, Allen, f. . .13	32	m f and o	19	
	915 Hedley, Thos. H, f.13	32	m f and oc	19	
	916 Hedley, Jas. W, f. .13	32	m f and oc	19	
j	934 Hall, Harvey, f. . .12	24	m f and o	24	
	917 Hodley, Wm. P, f. .13	32	m f and oc	19	
j	935 Hall, Wesley, f. . .12	25	m f and o	24	
	931 Hodgins, W. W, f. .12	13,22	m f and oc	10	
	932 Hodgins, W ^o tine, f. .12	13,22	m f and oc	10	
j	859 Hodgins, Abr'm, f. 14	24	m f and t	18	
	933 Hodgins, Nelson, f. .12	22	m f and oc	10	
j	906 Hutchinson, Fre'n. .13	25	m f and o	24	
	909 Harriscn, Fred, f. .13	28	m f and oc	24	
	877 Hodgins, Milton, f. .13	21	m f and oc	39	
j	764 Hodgins, Fred, f. . .15	22	m f and t	18	
j	765 Hodgins, T. D, f. . .15	23	m f and o	18	
	875 Harris, George, f. . .13	21	m f and o	39	
	819 Hodgins, Freeman, f.15	25	m f and oc	18	
	845 Hetherington, B, f. .14	29	m f and oc	18	
j	905 Hobbs, Chas, f. . . .13	25	m f and oc	24	
	802 Lumbey, Ashley, f.15	29	m f and o	18	
	761 Little, Thomas, f. .15	21	m f and o	18	
	763 Little, Francis, f. .15	21	m f and oc	18	
	787 Layng, Edward, f. .15	28	m f and o	18	
	809 Lamport, Edwd, f. .15	29	m f and o	18	
j	745 Little, James E, f. .16	26	m f and t	18	

No. on Roll.	Name and Occupation.	Con.	Lot.	—	O R
j	815 Lewis, Francis P, f.15	23	m f and o	18	
j	940 Lipsett, Thomas, f.12	31,32	m f and o	24	
	762 Little, George, f. . .15	21	m f and oc	18	
	816 Logan, Walter, f. . .15	24	m f and o	18	
	746 Matthews, Benj, f. .16	27,28	m f and o	18	
j	747 Matthews, Jas, f. .16	27,28	m f and o	18	
j	748 Matthews, David, f.16	28	m f and o	18	
j	750 Matthews, Wm, f 16	29	m f and o	18	
	751 Matthews, Anson, f.16	29	m f and oc	18	
	823 Morgan, Thos. f. . .15	27	m f and o	18	
	824 Morgan, David, f. . .15	27	m f and oc	18	
	826 Morgan, Benj, f. . .15	29	m f and oc	18	
	856 Marshall, Thos, f. . .14	23	m f and o	24	
	857 Marshall, Matt, f. . .14	23	m f and oc	24	
	858 Marshall, Robt, f. . .14	23	m f and oc	24	
	844 Miles, Wm, f. . . .14	29	m f and oc	18	
	799 Marsh, Philip R, f. .15	29	m f and o	18	
j	786 McKay, Byron, f. .15	28	m f and o	18	
j	820 McTavish, Alex, f.15	26	m f and o	18	
j	836 McDermott, Wm, f.14	24	m f and o	18	
j	838 McGuffin, Henry, f.14	25	m f and o	18	
j	878 McDonald, Wm, f. .13	22	m f and t	39	
j	821 McTavish, Jno. A, f.15	26	m f and oc	18	
j	822 McTavish, D, f. . . .15	26	m f and o	18	

j 831 N
j 863 N
892 N
j 868 N
867 N
j 887 N
883 N
890 N
828 N
889 N
891 N

801 O
j 814 C

j 854
j 902 C
880 C
j 853 C
855
880 C

Lot. — P.O.
 23 m f and o 18
 31,32 m f and o 24
 21 m f and oo 18
 24 m f and o 18
 7,28 m f and o 18
 7,28 m f and o 18
 28 m f and o 18
 29 m f and o 18
 29 m f and oc 18
 27 m f and o 18
 27 m f and oc 18
 29 m f and oo 18
 23 m f and o 24
 23 m f and oc 24
 23 m f and oc 24
 29 m f and oc 18
 29 m f and o 18
 28 m f and o 18
 24 m f and o 18
 25 m f and o 18
 22 m f and t 39
 26 m f and oo 18
 26 m f and o 18

No. on Roll.	Name and Occupation.	Con. Lot.	—	P.O.
j 831	Nichols, Moran, f....	15 31	m f and t	18
j 863	Nichols, Francis, f.14	27,28	m f and o	18
	892 Noyes, Edward, f....	13 31	m f and oc	19
j 868	Noyes, Andrew, f....	14 30	m f and oc	18
	867 Noyes, Thos, f.....	14 30	m f and oc	18
j 887	Noyes, John, f.....	13 29	m f and o	18
	883 Noyes, Albert, f....	13 25,26	m f and oc	18
	890 Noyes, Wm, f.....	13 31	m f and oc	19
	828 Nixon, George, f....	15 29	m f and oc	18
	889 Noyes, J Albert, f....	13 31	m f and o	19
	891 Noyes, Thos, f.....	13 31	m f and oc	19
	793 Orr, John, f.....	15 28	m f and t	18
	801 Orr, Robert, f.....	15 28	m f and oc	18
j 814	O'Neil, W'g'n, f....	{ 14 21 15 21	{ o m f and oc	{ 39
	813 O'Neil, Henry, f....	15 21	m f and o	39
j 854	O'Neil, Joseph, f.14,15	22	m f and o	39
j 902	O'Neil, Hiram, f....	13 23	m f and o	10
	880 O'Neil, Albert, f....	13 23	m f and oc	10
j 853	O'Neil, Malcolm, f...14	21	m f and o	39
	855 O'Neil, Thos D, f....	14 22	m f and oc	39
	880 O'Neil, Melvin, f....	13 23	m f and oc	39
j 846	Pimperton, John, f..14	30	m f and o	18
	806 Parker, Wm.	15 29	m f and t	18
	918 Patchett, Thos.	13 32	m f and oc	19

No. on Roll.	Name and Occupation.	Con. Lot	—	P.O.
	738 Roberts, Thos, f....	16 24	m f and o	18
j 767	Roberts, Leslie, f....	15 24	m f and o	18
j 768	Roberts, Chas L, f....	15 25	m f and o	18
j 772	Rosser, M T, f.....	15 27,28	m f and o	18
	796 Richards, James.....	15 29	m f and o	18
	805 Russell, John W, f..15	29	m f and o	18
j 840	Rosser, Ben'j W, f..14	27	m f and o	18
j 841	Rosser, M W, f.....	14 28	m f and o	18
	825 Rosser, Edwin, f....	15 28	m f and oc	18
	842 Rosser, Eliezer, f....	14 28	m f and oc	18
j 843	Rosser, Chas, f.....	14 29	m f and o	18
j 865	Rosser, John W, f..14	29	m f and o	18
j 908	Robson, Robt S, f...13	28	m f and o	24
j 903	Roberts, James, f...13	24	m f and o	24
j 910	Robson, Thos E, f.13	29,30	m f and o	24
j 912	Robson, C C, f....	{ 12 32 13 31	{ m f and o	{ 24
	936 Robson, Wm, f.....	12 27	m f and o	24
	939 Robson, John G, f.12	29,30	m f and o	24
	739 Roberts, Edward, f..16	24	m f and oc	18
j 864	Rosser, Martin H, f..14	28	m f and o	18
	773 Rosser, Jas L, f....	15 27,28	m f and oc	18
j 778	Robson, Beverly, f...15	32	m f and o	18
	866 Rosser, W Arthur, f..14	29	m f and oc	18
	774 Rosser, Thos A....	15 27,28	m f and oc	18
j 871	Robson, Edward, A, f.14	32	m f and o	20
	884 Rowe, Matthew, f...13	25,26	m f and oc.	
	904 Roberts, J Martin..	13 24	m f and oc	24

No. on Roll.	Name and Occupation.	Con.	Lot.	—	○	□
j 731	Stanley, Jas, f. . . .	16	22,23	m f and o	18	
732	Stanley, Wm, W, f. . . .	16	22,23	m f and oc	18	
752	Shiple, J. B, f. . . .	16	30,31,32	m f and o	18	
753	Shiple, Arch, f. . . .	16	30,31,32	m f and oc	18	
754	Shiple, J. T, f. . . .	16	30,31,32	m f and oc	18	
829	Shiple, Lio. L, f. . . .	15	30	m f and o	18	
830	Shiple, L. J. W, f. . . .	15	30	m f and oc	18	
733	Stanley, W.A.T, f. . . .	16	22,23	m f and oc	18	
771	Stewart, James D, f. . . .	15	26	m f and oc	18	
j 770	Stewart, Neil, f. . . .	15	26	m f and o	1	
941	Stratton, Geo.			m f and oc	24	
885	Treherne, Thos, jr, f. . . .	13	27	m f and oc	18	
885	Treherne, Thos, f. . . .	13	27	m f and o	18	
886	Treherne, David, f. . . .	13	27	m f and oc	18	
j 861	Walls, James, f. . . .	14	25,26	m f and o	18	

126
 2
 —
 128

PART 2—Persons entitled to vote at Municipal Elections only :

794	Abray, Peter, f. . . .	15	29	o	18
837	Abray, Wm, f.	14	24	o	
878	Corsant, Jas, motor- man	13	22	o	

No. on Roll.	Name and Occupation.	Con.	Lot.	—	○	□
764	Deacon, John, f. . . .	15	22	o		
935	Hartwick, Abr'm, f. . . .	12	26	t	24	
806	Harrison, Fred, f. . . .	15	29	o	27	
737	Hodgins, Jas. U, f. . . .	16	24	oc	25	
737	Hodgins, James, f. . . .	16	24	o		
734	Hodgins, Eli, f.	16	24	oc	25	
735	Hodgins, Robert, f. . . .	16	24	oc	25	
901	Hodgins, Mrs.	12	13,22	o		
735	Hodgins, Mrs. J.	16	24	o		
744	Haskett, David, f. . . .	16	26	o		
935	Hall, John, f.	12	25	o		
807	Hughes, Mrs.	15	29	t	18	
736	Hodgins, Albert.	16	24	oc	25	

835 Lewis, Francis, f. . . . 14 23 o 4

No. on Roll.
 826 Morg
 827 Morg
 828 Morg
 867 Noy
 804 Nich
 869 Noy
 812 O'N
 781 O'N
 853 O'N
 812 O'N
 782 O'N
 934 O'N
 906 Pai
 831 Pim
 906 Pai
 748 Ro
 906 Ro

POLLING SUB-DIVISION No. 5.

Lot.	P.O.	No. on Roll.	Name and Occupation.	Con. Lot.	P.O.
22	o	826	Morgan, Thos, f.....	15 29	o
		827	Morgan, Thos, R, f.....	15 29	oo 18
		828	Morgan, David, f.....	15 29	oc 18
		867	Noyes, Mrs., f.....	14 30	o
		804	Nichols, Morau.....	15 29	o
26	t 24	869	Noyes, Mrs. B.....	{ 13 31 }	o
29	o 27				
24	oc 25				
24	o				
24	oc 25				
24	oo 25				
13,22	o				
24	o	812	O'Neil, Mrs.....	15 21	o 10
26	o	781	O'Neil, Mrs. J. T.....	15 32	o 18
25	o	853	O'Neil, Arthur, f.....	14 21	o 10
29	t 18	812	O'Neil, Malcolm, f.....	15 21	oc
24	oo 25	782	O'Neil, Bailey, f.....	15 32	oc 18
		934	O'Neil, Hiran, f.....	12 23	o 10
		906	Paisley, S. W.....	13 26	o 24
		831	Pimperton, John, f.....	15 31	o 18
23	o 4	906	Paisley, James, f.....	13 26	t 24
		748	Rosser, Matt. T, f.....	16 28	o 18
		906	Robson, Robt. C, f.....	13 26	o 24

No. on Roll.	Name and Occupation.	Con. Lot.	P.O.
935	Robson, John H, f.....	12 26	o
808	Rosser, Mrs. Elizabeth.	15 29	o
825	Rosser, M. W, f.....	15 28	o
937	Robson, Robt. C, f.....	12 27	o 24
807	Rosser, Mrs. P.....	15 29	o
846	Rosser, B. W, f.....	14 31	o
859	Scott, Charles S, f.....	14 24	o 25
789	Shiple, Mrs. L. E.....	15 28	o 18
791	Shiple, Maggie.....	15 28	o 18
779	Siddall, Joseph.....	15 32	o 18
780	Siddall, Henry.....	15 32	o 18
749	Shiple, George, f.....	{ 15 31 } { 16 28 }	oc 27
749	Shiple, Mrs.....	{ 16 28 } { 15 31 }	o
800	Scandrett, John B.....	15 29	o
800	Scandrett, Joseph W.....	15 29	o
862	Treherne, Thos, f.....	14 27	o 18
862	Treherne, Thos, jr, f.....	14 27	oc 18
769	Whalen, Mrs, f.....	15 25	o 18
797	White, Elizabeth R, f.....	15 29	o 18

PART 3—Persons entitled to vote at Elections to the Legislative Assembly only :

NONE.

~~Fennell Andrew 11.30 M 7~~ *AK*
 Clark Charles 15-27 M 7 *AK*
 Melgrove William H 16.28 M 7 *AK*

Start Here

POLLING SUB-DIVISION No. 6

Includes the whole of Concessions A and B. Polling Place
Lot 8, Con. B.

PART 1—Persons entitled to vote at both Municipal Elections and Elections to the Legislative Assembly.

No. on Roll.	Name and Occupation.	Con.	Lot.	—	P.O.
1765	Ackland, Peter, f...	B	5	m f and o	35
j 1780	Allen, Benj, f.....	B	7	m f & o & t	28
j 1730	Atrill, Wm Thos, f .A	A	4	m f and o	28
1898	Baker, Chas, f.....	B	11	m f and oc	28
1859	Blythe, Chas, f.....	B	10	m f and t	28
1846	Burgess, Andrew, f...	B	10	m f and t	28
j 1802	Bernard, Wm, f.....	B	8	m f and t	36
j 1747	Branton, Thos, f....	{ B A	{ 9 5	m f and o	28
1718	Binns, Wm, f.....	A	3	m f and o	35
1889	Beltz, Henry, f.....	B	11	m f and o	28
1876	Beattie, Wm, f.....	B	10	m f and t	28
1870	Butler, Martin, f....	B	10	m f and o	28
1743	Beares, Job W, f....	A	5	m f and oc	28
j 1751	Branton, John, f....	A	6	m f and o	28
j 1767	Brown, Wm, f.....	B	5	m f and o	35
j 1782	Byers, James, f.....	B	1	m f and o	3
1851	Bourne, Edwin jr, f..	B	10	m f and o	28
1845	Burgess, John W, f..	B	10	m f and o	28
1902	Beltz, John E,	B	11	m f and oc	28
1901	Beltz, Charles C, f..	B	11	m f and oc	28
1816	Bowles, Thos, f.....	B	9	m f and o	28
1900	Brown, Thos R, f....	B	11	m f and o	28
1768	Brown, Wm Geo, f..	B	5	m f and oc	35

No. on Roll.	Name and Occupation.	Con.	Lot.	—	P.O.
j 1783	Bell, Win, f.....	B	2	m f and o	28
j 1790	Beattie, John J, f...B	B	7	m f and t	28
1893	Cook, Walter, f....	B	11	m f and oc	28
1732	Challand, George, f..A	A	4	m f and o	35
1746	Carroll, Eugene, f...A	A	5	m f and oc	28
j 1820	Cannom, Obadiah, f..B	B	9	m f & t & o	28
1860	Carswell, Allen, f...B	B	10	m f and o	28
1868	Curtis, Henry C, f..B	B	10	m f and o	28
j 1829	Chapman, Fred, f...B	B	10	m f and t	28
j 1892	Cook, Thos J, f.....	B	11	m f and t	28
1867	Carswell, Geo, f....	B	10	m f and o	28
j 1731	Ditch, George, f....	A	4	m f and o	35
1762	Drake, Jas S, f.....	B	1	m f and o	35
1791	Dobbie, Geo O, f...B	B	7,8	m f and t	28
1827	Day, Wm, f.....	B	10	m f and o	28
1891	Dean, Edwin, f.....	B	11	m f and o	28
1866	Davis, Charles, f...B	B	10	m f and t	28
1724	Drake, Henry, f....	A	2	m f and oc	35
1792	Dobbie, Chas, f.....	B	7,8	m f and oc	28

POLLING SUB-DIVISION NO. 6.

27

No. on Roll.	Name and Occupation.	Con.	Lot.	—	P.O.
j 1822	Dunham, Jas H, f...B	9	m f and t	28	
1793	Dobbie, Geo Me, f...B	7,8	m f and oc	28	
j 1817	Dengate, Chas, f...B	9	m f and o	28	
1838	Decker, Charles, f...B	10	m f and t	28	
1834	Duncan, George, f...B	10	m f and t	28	
1839	Decker, Frank, f...B	10	m f and oc	28	
j 1809	Eggett, John, f.....B	9	m f and t	28	
1847	Edwards, Harry, f..B	10	m f and o	28	
j 1861	Edwards, W D, agt.B	10	m f and o	28	
1752	Erskine, Robert, f...A	6	m f and t	28	
1812	Ellwood, John, f...B	9	m f and oc	28	
1768	Evans, Thos, f.....B	6	m f and t	35	
j 1755	Flin, Thomas, f....A,B	7	m f and o	28	
1824	Finch, Henry, f....B	9	m f and o	28	
j 1719	Fuller, Elias, f.....A	3	m f and o	35	
j 1883	Finch, Henry, f.....B	10	m f and o	28	
1781	Gwalehman, Hum, f.B	8	m f and o	28	
1864	Gould, G S, f.....B	10	m f and o	28	
1753	Gardiner, Henry, f..A	6	m f and o	28	
j 1776	Graham, Geo A, hotel keeper.....B	7,8	m f and o	28	
j 1810	Giles, W B, f.....B	9	m f and o	28	
1855	Griffiths, Fred, f...B	10	m f and o	28	
1856	Gibling, Walter, f..B	10	m f and o	28	
j 1789	Gleadall, Wm.....B	7	m f and t	28	
1857	Gibling, Walter jr, f.B	10	m f and oc	28	

No. on Roll.	Name and Occupation.	Con.	Lot.	—
1756	Hyslop, Thomas, f.	{A,B	7	m f and t } 28
		{B	8	m f and o } 28
j 1757	Hyslop, Wm, f....	{A,B	7	m f and t } 28
		{B	8	m f and o } 28
1804	Hall, George A, f...B	8	m f and o	1
1826	Hedges, George, f..B	10	m f and o	28
1877	Hawe, Robert, f...B	10	m f and o	28
1890	Homister, Chas, f...B	11	m f and o	28
1878	Hawe, Wm. H, f...B	10	m f and oc	28
j 1888	Homister, James, f..B	11	m f and o	28
j 1828	Hull, Francis, f....B	10	m f and o	28
1849	Holmes, Wm, f....B	10	m f and o	28
1778	Howard, Richard, f..B	7,8	m f and t	28
1835	Hughes, Wm, f.....B	10	m f and t	28
1748	Ingamells, Jas B, f..A	6	m f and o	1
j 1725	Joyes, Daniel, f....A	3	m f and o	35
1848	James, Joseph, f....B	10	m f and oc	28
1874	Jones, Joseph, f....B	10	m f and o	28
1858	Jones, William, f..B	10	m f and o	28
j 1763	Jackson, Geo. R, f..B	2	m f and t	35
1819	Joyes, Daniel, f.....B	9,10	m f and t	28
1779	Kenny, Erastus, f..B	7	m f and o	28
1872	Kew, William, f....B	10	m f and o	28
1873	Kew, Robt, f.....B	10	m f and oc	28
1720	Lea, Henry, f.....A	1	m f and o	3
1721	Lea, Harry, f....A	1	m f and oc	3
1852	Lamerton, Wm, f...B	10	m f and o	28
1722	Lea, Edgar, f.....A	1	m f and oc	3

POLLING SUB-DIVISION No. 6.

No. on Roll.	Name and Occupation.	Con.	Lot.	—	P.O.
j 1750	Meadows, Robt, f...A	6	m f and o		28
j 1794	Meecham, Geo, f...B	8	m f and o		28
1796	Monks, Wm, f...B	8	m f and o		28
j 1805	Morley, James, f...B	9	m f and o		28
j 1808	Mossip, Henry, f...B	9	m f and o		28
1850	Main, William, f...B	10	m f and o		28
1795	Meecham, Geo, jr, f.B	8	m f and oc		28
1806	Morley, Wm, f...B	9	m f and oc		28
j 1815	Marks, John, f...B	9	m f and o		28
j 1818	Munro, Donald, f...B	9	m f and o		28
1830	Madge, John, f...B	10	m f and o		28
j 1729	Mix, E. S, f...A	4	m f and o		35
j 1788	Mowat, Matt, f...B	5	m f and t		28
1833	McConnell, H, f...B	10	m f and o		28
1869	McKever, John, f...B	10	m f and o		28
j 1907	McGinnis, Angus, f.B	11,12	m f and t		28
j 1715	McKerlie, Chas, f...A	2	m f and t		35
1798	McCracken, F, f...B	8	m f and oc		28
j 1775	McIntosh, Jas, f...B	7	m f and t		28
1760	McDermid, Dan'l, f.A	8	m f and t	i	
j 1774	Nobie, W. H, f...B	6, 7	m f and t		28
1843	O'Brien, Wm, f...B	10	m f and oc		28
j 1799	Pratt, Wm, f...B	8	m f and t		28
j 1759	Plewes, Ed, B, miller.A	8	m f and o		1
1832	Pyman, W. C, f...B	10	m f and o		28
j 1737	Poad, John, f...A	4	m f and o		35
1905	Pegler, M. A, f...B	11,12	m f and oc		28
1831	Pratt, Wm, f...B	10	m f and t		28
j 1904	Pegler, Anthony, f..B	11,12	m f and o		28
j 1714	Parkinson, Geo, f...A	1	m f and o		35

No. on Roll.	Name and Occupation.	Con.	Lot.	—	P.O.
1906	Pegler, Maynard, f..B	11,12	m f and oc		
1733	Proctor, Locking, f..A	3,4	m f and o		35
j 1766	Poad, Geo. H, f...B	5	m f and o		35
1761	Parkinson, Wm, J, f.B	1	m f and oc		3
1903	Pegler, John, f...B	11,12	m f and o		28
1728	Quait, Marshall, f...A	4	m f and o		35
j 1727	Ryckman, Gilbert, f.A	3	m f and o		35
1754	Rook, John, f....	{ B 10 } { A 6,7 }	m f and o		28
1886	Robinson, Wm, f...B	11	m f and t		28
1723	Shun, John, f...A	2	m f and o		35
j 1786	Smith, Chas. A, f...B	4	m f and o		28
1811	Sanders, R. H, f...B	9	m f and oc		28
1814	Scott, Alexander, f..B	9	m f and o		28
j 1863	Stratfold, Henry, f..B	10	m f and o		28
j 1894	Smith, John J, f...B	11	m f and o		28
1801	Smith, Wm, f...B	8	m f and o		28
1912	Stothers, Dv'd W, f.B	12	m f and oc		1
j 1784	Skellott, Charles, f..B	3	m f and o		3
1895	Smith, Richard, f...B	11	m f and oc		28
j 1803	Scott, Walter, f...B	8	m f and o		36
j 1741	Talbot, W. H. K, f...A	5	m f and o		35
1742	Talbot, W. L, f...A	5	m f and oc		35

126
129

Con.	Lot.	P.O.
B	11,12 m f and oc	
A	3,4 m f and o	35
B	5 m f and o	35
B	1 m f and oc	3
B	11,12 m f and o	28
	4 m f and o	35
	3 m f and o	35
10,6,7	m f and o	28
11	m f and t	28
2	m f and o	35
4	m f and o	28
9	m f and oc	28
9	m f and o	28
10	m f and o	28
11	m f and o	28
8	m f and o	28
12	m f and oc	1
3	m f and o	3
11	m f and oc	28
8	m f and o	36
5	m f and o	35
5	m f and oc	35

No. on Roll.	Name and Occupation.	Con.	Lot.	P.O.
1773	Wood, John, f.	B	6,7 m f and o	35
1844	White, Matthew, f. . .	B	10 m f and o	28
1713	Wilkinson, J. W, f. .A	1	m f and oc	35
1738	Whitehead, Tom, f. .A	4	m f and o	35
1854	Winslow, Wm, f. . . .B	10	m f and o	28
1740	Webb, Arthur, f. . . .	{ A } 5 } { B } 4 }	m f and oc	35
1739	Webb, Thos, f.A	5	m f and o	35
1865	Yates, James, f. . . .B	10	m f and o	28
PART 2—Persons entitled to vote at Municipal Elections only:				
1749	Allen, Mrs.A	6	o	28
1913	Arscott, Frank, f. . . .B	12	o	1
1809	Alister, John, f. . . .B	9	o	
1764	Atrill, Wm.B	3	o	
1807	Bush, Charles, f.B	9	o	
1896	Bourne, Edwin, sr, f. .B	11	o	28
1875	Brinsden, Chas, f. . . .B	10	o	
1821	Brown, Thos. R, f. . . .B	9	o	28
1726	Brooks, Robert, f. . . .A	3	o	1
1787	Beattie, John J, f. . . .B	4	t	28
1913	Bricklin, Chas, f.B	12	oc	

No. on Roll.	Name and Occupation.	Con.	Lot.	P.O.
1900	Beltz, Henry, f.B	11	t	
1715	Bradley, Mrs. S, f. . . .A	2	o	
1743	Beares, Mrs. W, f. . . .A	5	o	28
1735	Eickley, John, f.A	3,4	o	
1745	Branton, John, f.A	5	o	
1745	Branton, Thos, f.A	5	t	
1880	Cronyn, V, lawyer. . . .B	10	o	
1746	Carroll, Alpheus, f. . . .A	5	o	
1813	Campbell, C. T, f. . . .B	9	o	
1743	Case, Albert, f.A	5	o	
1775	Cox, Mrs.B	7	o	
1899	Cook, P.J, shoe dealer.B	11	o	
1880	Dunham, James, f.B	10	t	
1881	Dunham, A. M, f.B	10	oc	
1771	Dyer, Mrs.	{ B } 6 } { B } 8 }	o	28
1751	Drake, James S, f.A	6	o	
1868	Dunham, Jas. H, f.B	10	t	
1881	Dunham, W. J, f.L	10	oc	
1882	Dunham, Albert, f.B	10	oc	
1772	Erskine, Robt, f.B	6	t	35
1734	Fuller, Mrs.A	4	o	
1825	Gould, Wm, butcher. . . .B	10	o	28
1837	Gibling, W. J, f.B	10	o	
1887	Griffiths, Mrs. H.B	11	o	28
1777	Graham, Miss B.B	7,8	o	28

No. on Roll.	Name and Occupation.	Con.	Lot.	—	o
1785	Hunt, George, f.	B	3	o	
1823	Hughes, George, f.	B	9	o	28
1787	Hall, Henry, f.	B	4	o	2
1900	Labatt, John, brewer.	B	11	o	1
1769	Mooney, Mrs.	B	6	o	35
1716	Milne, James.	A	2	o	
1884	Mann, Jno, coal dealer,	B	10	o	1
1908	Moore, Wm.	B	12	o	1
1885	Mann, G. T., coal dealer,	B	10	o	1
1909	Moore, Robt. G. B.	B	12	o	
1910	Moore, Jas. Percy.	B	12	o	
1911	Moore, Thos. Alex.	B	12	o	
1736	Merrills, Chancey.	A	4	o	
1831	Mahooney, Mrs.	B	10	o	
1802	McDonald, Angus	B	8	o	
1780	McKellar, Mrs.	B	8	o	1
1788	McLaren, Jas. R, f.	B	6	o	36
1912	McGinnis, Angus, f.	B	12	o	
1797	McCracken, Mrs.	B	8	o	28
1892	Nelles, W. S.	B	11	o	
1788	Neeley, T. J.	B	5	t	28
1842	O'Brien, Mrs.	B	10	o	28

No. on Roll.	Name and Occupation.	Con.	Lot.	—	o
1761	Parkinson, Thos, f.	B	1	o	3
1758	Plewes, Heber, miller.	A	8	o	1
1897	Parkinson, Mrs.	B	11	o	28
1853	Parkinson, Samuel, f.	B	10	oc	28
1738	Pollard, Nicholas, f.	B	5	o	
1822	Patrick, Wm, f.	B	9,10	o	
1799	Pett, Richard, f.	B	8	o	
1763	Platt, Francis H, f.	B	2	o	
1841	Quinton, Mrs. S.	B	10	t and o	
1913	Quinn, Mark.	B	12	oo	
1819	Roberts, Martin.	B	9,10	o	28
1821	Scatcherd, H. S.	B	9	o	
1815	Shanley, W.	B	9	o	
1717	Smart, Edward, f.	A	3	o	1
1892	Steel, Philip, f.	B	11	o	
1788	Stewart, Wm, f.	B	5	o	
1789	Summers, Chas, f.	B	7	o	

1764 Webb
1800 Wist
1713 Wilk

Lot.	—	No. on Roll.	Name and Occupation.	Con. Lot.	—	P. O.
B 1	o	3	1764 Webb, Thos, f.....	B 4	o	
A 8	o	1	1800 Wistow, Thos, f.....	B 8	o	2
B 11	o	28	1713 Wilkinson, Thos f....	A 1	o	
B 10	oc	28				
B 5	o					
B 9,10	o					
B 8	o					
B 2	o					
B 10	t and o					
B 12	oc					
B 9,10	o	28				
B 9	o					
B 9	o					
A 3	o	1				
B 11	o					
B 5	o					
B 7	o					

PART 3—Persons entitled to vote at Elections to the Legislative Assembly only :

1836 Smith, Curtis, laborer, B 10 m f .28

POLLING SUB-DIVISION No. 7

Includes the whole of Concession C and 1 in St. Lawrence Ward. Polling Place—
S. Spicknell's house, Lot 8, Con. C.

PART 1—Persons entitled to vote at both Municipal Elections and Elections to the Legislative Assembly :

No. on Roll.	Name and Occupation	Con.	Lot.	—	P.O.
2048	Alda, John, f.	C	9	m f and o	1
j 2123	Anderson, Nath'l, f. . .	1	7	m f and o	1
2144	Anunson, Geo. S, f. . .	1	11	m f and o	1
j 2078	Armstrong, W. P, f. . .	1,4	1,4	m f and t	36
	<i>Adams Thomas 1-8 m 749</i>				
2150	Buchan, H. E., M. D. . .	1	8	m f and in	1
2086	Burge, Henry, f.	1	6	m f and t	36
1960	Burley, Robt, f.	C	10	m f and o	2
2124	Brjody, James, f.	1	7	m f and o	36
2126	Brjody, John, f.	1	7	m f and oc	36
2149	Bucke, R. M., M. D. . .	1	8	m f and in	1
2125	Brjody, James, jr, f. . .	1	7	m f and oc	36
j 2025	Barnes, Well'g'n, hotel keeper.....	C	8	m f and o	36
j 1977	Batton, John, f.	C	4	m f and t	36
j 2018	Buchanan, D. F, f. . .	C	8	m f and t	36
2070	Bailey, Turner, me- chanic.....	1	1	m f and o	3
2020	Brooks, Granville, f. .	C	8	m f and t	36
2056	Barnes, Thomas, f. . .	C	8	m f and oc	36
j 2040	Bradshaw, Wm, f. . .	C	8	m f and t	36

Bucke Pardee 1-8 m 749
Burnand John 1-8 m 749
Beauchamp John 1-8 m 749

No. on Roll.	Name and Occupation.	Con.	Lot.	—	P.O.
j 2071	Clark, Samuel, f.	1	1	m f and o	3
j 1974	Clark, John, f.	C	2,3	m f and o	3
j 1978	Clark, Thomas, auc- tioneer.....	C	4	m f and o	2
j 2056	Campbell, Alex. B, gentleman.....	C	9	m f and o	36
j 2079	Clark, David, f.	1	5	m f and o	2
j 2130	Cotter, James, f.	1	7	m f and o	2
j 2131	Cotter, Richard, f. . .	1	7	m f and o	2
j 2136	Cox, Job, f.	1	10,11	m f and t	2
2137	Cox, Frank, f.	1	10	m f and oc	2
1975	Clark, Edgar, f.	C	2,3	m f and oc	3
j 2035	Cairncross Geo, f. . .	{ C C	{ 9 8	m f and o	36
2021	Constable, Geo.....	C	8	m f and t	36
j 2065	Collins, Jeremiah, f. .	C	9	m f and o	36
j 2012	Campbell, Dugald, f. .	C	8	m f and t	36
2092	Carling, Bernard, f. .	1	7	m f and o	36
j 1917	Creighton, Ken'dy, f. .	C	2	m f and t	3
j 2087	Clay, Chas, f.	1	6	m f and o	36
1979	Clark, Fred E, f.	C	4	m f and oc	2
	<i>Calcott Albert 1-8 m 749</i>				
1923	Drake, Barth'mew, f. .	C	4	m f and o	36
1952	Devine, Robert, f. . .	C	10	m f and oc	2
2117	Dunn, John, f.	1	6	m f and o	2
j 2110	Dean, John, f.	1	4	m f and o	36
1957	Davis Joseph, f.	C	10	m f and t	2
1983	Dehart D. L, f.	C	5	m f and t	36
2006	Dawe, Wm, f.	C	8	m f and t	36

No. on Roll.
2003
j 2101
2050
1951
2088
1931
2061
j 1935
2135
j 2134
1981
1982
j 2001
j 2115
j 2023
j 2113
j 1973
1962
j 2075
2014
9

POLLING SUB-DIVISION No. 7.

33

7
Polling Place—

Lot. — P.O.

1 m f and o 3
2,3 m f and o 3
4 m f and o 2
9 m f and o 36
5 m f and o 2
7 m f and o 2
7 m f and o 2
9,11 m f and t 2
10 m f and oc 2
2,3 m f and oc 3
9 m f and o 36
8 m f and t 36
9 m f and o 36
8 m f and t 36
7 m f and o 36
2 m f and t 3
6 m f and o 36
4 m f and oc 2
4 m f and o 36
0 m f and oc 2
6 m f and o 2
4 m f and o 36
10 m f and t 2
5 m f and t 36
8 m f and t 36

No. on Roll.	Name and Occupation.	Con.	Lot	—	P.O.
2093	Denley, Alfred, f....	C	8	m f and t	36
j 2101	Darch, F. J, f.....	1	10	m f and t	1
2059	England, Wm, f....	C	9	m f and o	36
1951	Ensign, Silvanus, f..	C	10	m f and o	2
2088	Furse, James, f....	1	6	m f and o	36
1931	Ford, Fred, f.....	C	7	m f and oc	36
<p><i>Frazell John 1-8-1944</i> <i>Frazell Andrew 1-8-1944</i> <i>Henry Williams 1-8-1944</i></p>					
2061	Gall, James, f.....	C	9	m f and t	36
j 1935	Garrett, Alex, f....	C	8	m f and o	36
2135	Gilbert, James, f....	1	10	m f and oc	2
j 2134	Gilbert, Joseph, f... 1	1	10	m f and t	2
1981	Gunn, Edward, f....	C	5	m f and oc	36
1982	Gunn, Andrew, f....	C	5	m f and oc	36
j 2001	Girvin, David, f....	C	7,8	m f and o	36
j 2115	Gales, John, f. . . .	1	6	m f and t	1
j 2023	Glass, S. F, potter...	C	8	m f and o	36
j 2113	Gales, Daniel, f.	1	6	m f and t	1
<p><i>Girvin George 1-8-1944</i></p>					
j 1973	Hogg, Andrew, f....	C	2	m f and t	3
1962	Hammond, George, f C	10	m f and o	1	
j 2075	Hart, George, f.....	1	2	m f and t	3
2014	Higgins, Thos, f....	C	8	m f and t	36

No. on Roll.	Name and Occupation.	Con.	Lot	—	P.O.
2016	Heighway, Rich'd...	C	8	m f and o	1
1964	Hickson, Zealand, f, C	10	m f and o	2	
2083	Hunter, George, f... 1	6	m f and o	36	
1968	Hill, J. J, f.....	C	10	m f and o	1
j 1993	Heman, Robert, f... C	7	m f and o	36	
j 2140	Hourd, Arthur E, f. 1	11	m f and o	1	
2054	Haskett, Henry, f.. C	9	m f and o	36	
j 2141	Hunt, Samuel H, f. 1	11	m f & t & o	2	
2015	Hirschleber, Mr, f... C	8	m f and t	36	
2009	Heckman, Fred, f... C	8	m f and t	36	
2010	Hammer, Hans, f... C	8	m f and t	36	
1987	Isaac, John, f....	C	6	m f and o	2
1988	Isaac, Anson, f.....	C	6	m f and oc	2
1989	Isaac, Charles, f....	C	6	m f and oc	2
2049	Irwin, Edward, f....	C	9	m f and t	1
j 1927	Ingles, Alfred....	B.C	6	m f and o	28
2073	Johnson, Jas, f... 1	1	m f and oc	3	
2037	Jensen, Mr, f.....	C	8	m f a. l t	36
2145	Jepson, Samuel, f... 1	11	m f and o	1	
2058	Kitchen, W. J, f....	C	9	m f and t	36

No. on Roll.	Name and Occupation	Con.	Lot.	—	O. P.
1953	Luckhurst, Edw, painter.....	C	10	m f and o	2
j 1994	Luttrell, Isaac, f....	C	7	m f and o	36
j 2077	Leinstrum, Wm, f....	1	4	m f and o	36
j 1928	Langford, George, f.C		6	m f and o	36
j 1924	Langford, Wm.A, f.C		5	m f and o	36
j 2084	Little, John A, f....	C	9	m f and o	36
j 1990	Myers, Fred, f.....	C	7	m f and t	36
j 1920	Mayne, Arthur, f..	C	3	m f and o	28
j 1950	Martin, Charles, f...C		10	m f and o	2
2051	Murphy, Phillip, f...1		7	m f and o	36
2034	Metcalfe, Jabez, f..	{ C	{ 7,8	m f and o,	36
j 1941	Morris, James, f....	C	8	m f and o	2
1961	Morley, John, f....	C	10	m f and o	1
1963	Moran, John, f....	C	10	m f and o	2
1936	Morris, John, f....	C	8	m f and o	36
j 2055	Mossip, John A, f...C		9	m f and o	36
1929	McLaren, James, f. C		7	m f and o	36
j 1972	McKenzie, M. J, f..C		2	m f and o	3
2063	McKenna, John, f...C		9	m f and o	36
1930	McLaren, Jas. R, f..C		7	m f and oc	36
j 2080	McCormick, Wm, f..1		6	m f and o	36
1922	McClennan, John, f.C		4	m f and oc	35
2008	McGregor, David, f.C		8	m f and t	36
1971	McConkey, Robt, f..C		1	m f and oc	3
j 1992	McDonald, Donald, f C		7	m f and o	36
2004	McConnell, Allen, f..C		8	m f and t	36
j 2013	McIntosh, Chas, f...C		8	m f and t	36
j 2042	McQuillan Jas, f....C		8	m f and t	36

100

llk Macfie Hector 1-8-18-18749

llk

McLaughlin Thos 1-8-18749

No. on Roll.	Name and Occupation	Con.	Lot.	—	O. P.
j 2057	Nutticorabe, Geo, f..C		9	m f and t	36
2081	Nelson, W. J, f....1		6	m f and o	36
j 1926	Neely, T. J, f.....C		5	m f and t	28
2122	Osborne, John, f....1		7	m f and o	2
2005	Pomeroy, James, f..C		8	m f and t	36
1967	Portsmouth, Jos, f..C		10	m f and o	2
2082	Perkins, Wm, f....1		6	m f and o	36
j 2074	Quinn, William J, f.1		2	m f and o	3
2119	Rawlings, George, f..1		7	m f and t	36
2051	Robson, Mr, f.....C		9,10	m f and oc	1
2128	Ross, John, f.....1		7	m f and o	1
j 1995	Robinson, George, f.C		7	m f and o	36
j 2107	Rogers, Wm, f....1		2	m f and t	3
j 1986	Rutledge George, f..C		5	m f and o	36
j 1925	Stanfield, Julian, f..C		5	m f and o	36
j 2111	Spicknell, Samuel, f.C		8	m f and o	36
j 2076	Sloan, Samuel, f..	{ 1	{ 3	m f and o	{ 3
2098	Symmonds, John, f..1		10	m f and o	1
2099	Symmonds, Joseph, f 1		10	m f and o	1
j 2118	Smith, John, f....1		6	m f and t	2
1959	Swope, Adam, f....C		10	m f and t	2
j 2069	Short, Alfred E, f...C		9	m f and o	1
j 2072	Scott, Wm, f.....1		1	m f and t	3
j 2105	Saul, Wm. John, f..1		1	m f and o	3

*llk Final George 1-8-18749
Patterson William 6-8-18749*

llk Rogers Edwin 1-8-18749

No. on Roll.
j 1937
2045
2152
j 1938
1966
j 2094
j 1914
2108
2143
j 2038
j 2043
j 2111
1915
2007
j 2106
j 1939
j 2096
2047
2133
1921
j 1933
j 1997
j 1991
j 2067
j 2090
j 1985
1998
16

Lot.	—	P.O.	No. on Roll.	Name and Occupation.	Con.	Lot.	—	O.
9	m f and t	36	j 1937	Snow, Jas, butcher, C	8	m f and t	36	
6	m f and o	36	2045	Scanlon, John, f....C	10	m f and o	1	
5	m f and t	28	2152	Sippl, Dr, bursar....1	8	m f and in	1	
			j 1938	Snow, John, butcher C	8	m f and t	36	
			1966	Sharratt, Arthur, f..C	10	m f and o	2	
7	m f and o	2	j 2094	Sleator, John, f....1	7	m f and o	36	
			j 1914	Stephenson, Geo, f..C	1	m f and o	3	
			2108	Stephenson, Herb't, f 1	3	m f and oo	31	
			2143	Stockwell, Wesley, f 1	11	m f and oo	1	
8	m f and t	36	j 2038	Scott, G. T, f.....C	8	m f and o	36	
10	m f and o	2	j 2043	Shaln, Hiram, f....C	8	m f and t	36	
6	m f and o	36	j 2111	Stephenson, F, f....C	1,6	m f and o	36	
			1915	Stephenson, D. T, f..C	1	m f and oo		
				<i>Stewart William L. 8. M. 49</i>				
2	m f and o	3						
7	m f and t	36	2007	Thornton, Saml, f..C	8	m f and t	36	
0,10	m f and oo	1	j 2106	Tazman, Wm, f.....1	1	m f and t	3	
7	m f and o	1	j 1939	Taylor, Henry, f....C	8	m f and o	2	
7	m f and o	36	j 2096	Tremaine, Robert, f..1	7	m f and t	36	
2	m f and t	3	2047	Tupholm, Geo, f....C	10	m f and t	2	
5	m f and o	36	2133	Tanton, Henry, f....1	9	m f and oo	1	
5	m f and o	36						
8	m f and o	36						
3	m f and o	3						
6	oo	3	1921	Williams, El'jh E, f.C	4	m f and o	28	
10	m f and o	1	j 1933	White, John L, f....C	8	m f and o	36	
10	m f and o	1	j 1997	Whitaker, Joseph, f.C	7	m f and o	36	
6	m f and t	2	j 1991	Westcott, Thos, f...C	7	m f and o	1	
10	m f and t	2	j 2067	Wictow, Thos, f....C	9	m f and o	2	
9	m f and o	1	j 2090	Wood, Robert B, f..1	6,7	m f and o	36	
1	m f and t	3	j 1985	Whitehall Arthur, f.C	5	m f and o	36	
1	m f and e	3	1998	White Wm, f.....C	7	m f and oo	36	

No. on Roll.	Name and Occupation.	Con.	Lot.	—	O.
2095	Whetter, Francis, f..1	7	m f and o	36	
j 2085	Wallis, George, f....1	6	m f and t	36	
j 2109	Watts, Henry, f....1	4	m f and o	31	
1969	West, Harry, f.....C	10	m f and oo	1	
2041	Watts, George, f....C	8	m f and t	36	
	<i>Wilson William L. 8. M. 49</i>				
	<i>182 ✓</i>				
	<i>60</i>				
	<i>242</i>				
PART 2—Persons entitled to vote at Municipal Elections only :					
2120	Adams, Mr, f.....1	7	t		
2086	Barnes, R. T, f.....1	6	o		
2120	Beatty, Mrs.....1	7	o		
2132	Blizard, Mrs.....1	9	o 1		
2050	Birt, Mrs. Jno. S....C	9	o		
2107	Brownlee, Henry, milkman.....1	2	o		
2127	Boyd, Miss.....1	7	o		
1932	Branton, Thos, f....C	8	o 28		
2097	Carling, Sir J, brower.1	9	o 1		
2119	Carter, John, f.....1	7	o 2		
1990	Carling, Bernard, f..C	7	o		
2114	Coursey, John, f....1	6	o 1		
2103	Courtier, Francis, f..1	10	o 2		
2104	Cobbledick, Wm, f..1	10	o		
2039	Coote, John.....	{ C 8 } { i 9 }	o 1		

No. on Roll.	Name and Occupation.	Con.	Lot.	—	P.O.
1937	Dodson, Mrs	C	8		o
1945	Englehart, J.L, oil man.	C	10		o 1
2066	England, Mary	C	9		o 36
2075	Essey, Mrs.		1 3		o 3
2116	Furse, James, f.		1 6		o 36
1944	Fitzgerald, F. A, oil man.	C	10		o 1
1976	Finley, John	C	3		o
2089	Fox, George		1 6		t
2046	Garrett, Joshua, brick-layer	C	10		o
2096	Goforth, Wm, f.		1 7		o
2053	Gardiner, Dr, M. D.	C	9		o 2
2022	Glass, Sam, gentleman	C	8		o 1
2023	Glass, C. T, gentleman	C	8		o 1
2024	Glass, J. H, gentleman	C	8		o 1
1980	Gunn, Mrs.	C	5		t 36
2113	Gales, Mrs.		1 6		o
1943	Geary, Geo, oil man.	C	10		o 1
1946	Geary, Wm, oil man	C	10		o
1918	Galpin, Richard, f.	C	3		o
2093	Ginge, J.H, pork packer		1 7		o

No. on Roll.	Name and Occupation.	Con.	Lot.	—	P.O.
1958	Harris, Amos, f.	C	10		o 2
2063	Hill, William, f.	C	9		o 1
2072	Howay, Burgess, carpenter		1 1		o
2068	Haskett, Thos. H, f.	C	9		o 1
2134	Higgins, Benj, gentleman		1 10		o 1
2136	Hunt, Mrs.		10, 11		o
2079	Hodgins, T. D, gentleman		1 6		o
2084	Heman, George, f.		1 6		o
2060	Henderson, Ada	C	9		o
2014	Hill, Miss	C	8		o
2066	Haskett, Henry, f.	C	9		o 36
2138	Hunt, Samuel H, f.		1 11		o 1
1942	Hill, Robert, f.	C	9		t 1
1977	Higgins, Thos, f.	{ C	{ 1 10 4 }		o 1
1932	Hamilton, John, f.	C	8		o
2146	Hourd, Arthur E, f.		1 11		o 1
2086	Isaac, Wm, f.		1 6		o 2
2000	Jarvis, Andrew J.	C	7		o 1
1916	Jones, Mrs. L	C	2		o 1
2110	Kernohan, Mrs. W		1 5, 6		o
1942	Kent, Mrs	C	9		o
2112	Kernohan, R, f.		1 6		oo
2112	Kernohan, W. T, f.		1 6		oo

No. on Roll.
2092 L
1957 L
2147 L
2148 L
1970 L
2036 L
2121 M
1948 M
1947 M
1949 M
1954 M
1999 M
2089 M
2052 M
1970 M
1971 M
2078 M
2062 M
2129 OI
2044 P
2102 Pe

PART 3—Parsons entitled to vote at Elections to the Legislative Assembly only :

No. on Roll.	Name and Occupation.	Con.	Lot.	—	P.O.
2174	Angus, Geo.	1	8		m f
2164	Alston, W. J.	1	8		m f

2187	Brigler, Charles.	1	8		m f
2196	Barrett, Patrick.	1	8		m f
2151	Beemer, Frank, M. D.	1	8		m f
<i>Burnand</i> 2193	<i>Burnand</i> Bernard, B.	1	8		m f
2168	Bowers, Richard.	1	8		m f

2029	Cook, John	C	8		m f 36
------	------------	---	---	--	--------

<i>ck.</i> 2201	<i>Dark</i> Dart , Collins	1	8		m f
2169	Donahue, Timothy.	1	8		m f
2154	Duff, Jas. B.	1	8		m f
2155	Downey, George.	1	8		m f
2028	Dingle, Wm.	C	8		m f 36
2159	Dunn, Stephen.	1	8		m f

2191	England, Geo.	1	8		m f
------	---------------	---	---	--	-----

No. on Roll.	Name and Occupation.	Con.	Lot.	—	P.O.
2195	Feeley, John	1	8		m f
2171	Flynn, Richard.	1	8		m f
2173	Flynn, Thomas.	1	8		m f
2198	Feeley, Patrick.	1	8		m f
2199	Flaherty, Pence.	1	8		m f
<i>ck.</i> 2202	<i>Flaherty</i> Flaherty , John	1	8		m f

2184	Gibbons, Henry	1	8		m f
2188	Gardiner, George	1	8		m f

2197	Harris, George, f.	1	8		m f
2153	Hobbs, A. T, M. D.,	1	8		m f

2194	Keating, F.	1	8		m f
2031	Kelly, Jas. F.	C	8		m f
2033	Koal, Anthony.	C	8		m f

No. on Roll. 2162 M
2166 M
2181 M
2157 M
2200 M
2030 N
2172 O
2175 O
2161 O
2186 O
2163 O
2032 O
2176 P

POLLING SUB-DIVISION No. 7.

Lot.	—	P.O.	No. on Roll.	Name and Occupation.	Con.	Lot.	—	P.O.	No. on Roll.	Name and Occupation.	Con.	Lot.	—	P.O.
8	m f		2162	Munro, Chas.....	1	8	m f		2167	Rogers, Benj. F.....	1	8	m f	
8	m f		2166	Murdoch, Wm.....	1	8	m f		2170	Rennie, G. W.....	1	8	m f	
8	m f		2181	McMurtry McMurtry, John.....	1	8	m f		2158	Ross, George.....	1	8	m f	
8	m f		2157	McFie, Alex.....	1	8	m f		2177	Rathban, Wm.....	1	8	m f	
8	m f		2200	McCallum, Stewart....	1	8	m f		2027	Ross, Alex.....	C	8	m f	
									1996	Rooney, John.....	C	8	m f	
8	m f		2030	Nelson, Mr.....	C	8	m f		2165	Stewart, J. A.....	1	8	m f	
8	m f								2203	Smith, Hugh.....	1	8	m f	
									2190	Sullivan, David.....	1	8	m f	
									2183	Snyder, Frank.....	1	8	m f	
			2172	O'Neil, James.....	1	8	m f		2160	Tackabury, John.....	1	8	m f	
8	m f		2175	O'Donnell, John.....	1	8	m f		2185	Taylor, George.....	1	8	m f	
8	m f		2161	O'Neil, Wm.....	1	8	m f		2156	Thirling, George.....	1	8	m f	
			2186	O'Rourke, Michael.....	1	8	m f		2192	Topping, Arthur.....	1	8	m f	
			2163	O'Meara, Patrick.....	1	8	m f		2180	Thirsk, Wm.....	1	8	m f	
			2032	Olsen, Mr.....	C	8	m f							
8	m f								2182	Walker, Melville.....	1	8	m f	
8	m f								2489	Wilkins, Wm.....	1	8	m f	
8	m f		2176	Pomphrey, John.....	1	8	m f		2179	Wooster, Harry.....	1	8	m f	
									2178	Williams, Fred.....	1	8	m f	

66

POLLING SUB-DIVISION No. 8

Includes that part of St. Lawrence Ward between the Second Concession line and the centre of Concession 3. Polling Place—Lot 8, south half Con. 3.

PART 1—Persons entitled to vote at both Municipal Elections and Elections to the Legislative Assembly :

No. on Roll.	Name and Occupation.	Con.	Lot.	—	P.O.
2341	Anderson, James, f.	3	9	m f and oc	1
2342	Anderson, John, f.	3	9	m f and oc	1
2234	Asbman, Thos.	2	11,12	m f and oc	1
j 2396	Ardiel, Wm.	3	15	m f and t	1
j 2395	Bowman, Geo, f.	3	15	m f and t	1
2398	Burt, Samuel H, f.	3	16	m f and o	1
j 2249	Backhouse, J S, f.	2	12	m f and t	1
2324	Bacon, Wm, f.	3	5	m f and oc	31
j 2236	Bell, Walter, f.	2	12	m f and o	2
2261	Boyd, Thomas, f.	2	12	m f and o	2
j 2323	Bacon, Daniel, f.	3	5,7	m f and o	31
2380	Blackall, Joshua, f.	3	15	m f and o	1
2263	Boyd, L, f.	2	12	m f and oc	2
2262	Boyd, Hugh, f.	2	12	m f and oc	2
j 2334	Ball Thomas, f.	3	8	m f and t	2
2369	Berryhill, Samuel, mechanic.	3	15	m f and o	1
2370	Berryhill, Alexander J, mechanic	3	15	m f and oc	1
j 2237	Bruin, Henry	2	12	m f and t	1
2384	Berryhill, Thos.	3	15	m f and oc	1
j 2389	Bryant, James	3	15	m f and t	1
j 2283	Crosbie, Peter, f.	2	9	m f and o	2
j 2321	Crosbie, Alex, f.	3	4	m f and o	31
2327	Cox, James, f.	3	6	m f and o	31
2250	Crawford, Thos, f.	2	12	m f and oc	1

No. on Roll.	Name and Occupation.	Con.	Lot.	—	P.O.
j 2213	Coursey, James, f.	2	6	m f and o	36
2219	Coote, John, f.	2	9	m f and o	1
2333	Cater, John, f.	3	8	m f and o	1
j 2225	Chadwick, Ro'ley, f.	2	10	m f and o	2
j 2267	Clare, Samuel, f.	2	12	m f and o	1
j 2354	Cartlidge, Geo, f.	3	12	m f and o	1
j 2208	Cook, Wm, f.	2	4	m f and o	31
2244	Cooper, Albert	2	12	m f and t	1
2287	Clare, Robert, f.	2	10	m f and t	36
2288	Clare, John, f.	2	10	m f and oc	36
2223	Dunn, Bernard, f.	2	9	m f and o	2
2224	Dunn, Michael, f.	2	9	m f and o	2
2400	Delaney, John, f.	3	16	m f and oc	1
2293	Davis, James, f.	2	11	m f and t	2
2326	Dacey, Ira, f.	3	6	m f and oc	31
j 2319	Ellice, Wm, f.	3	4	m f and o	31
j 2394	Elliott, Wm	3	15	m f and t	1
2204	Effingham, Wm.	2	1,2	m f and oc	3
2320	Ellice, Wm John, f.	3	4	m f and oc	31

No. on Roll.

2343 F

2371 F

2215 G

2335 G

2236 G

2300 H

2271 H

2242 H

2243 H

2248 H

2391 H

2253 H

2364 H

2393 H

In

2247 In

2366 Jc

2367 Jc

2368 Jc

POLLING SUB-DIVISION No. 8.

41

8

on line and the
1. 3.

Lot. — P.O.
6 m f and o 36
9 m f and o 1
8 m f and o 1
10 m f and o 2
12 m f and o 1
12 m f and o 1
4 m f and o 31
12 m f and t 1
10 m f and i 36
10 m f and oc 36
9 m f and o 2
9 m f and o 2
16 m f and oc 1
11 m f and t 2
6 m f and oc 31

No. on Roll.	Name and Occupation.	Con.	Lot.	—	P.O.
2343	Fallon, Patrick, f....	3	9,10	m f and o	1
2371	Floyd, Wm, f.....	3	15	m f and o	1
2215	Gale, John, f.....	2	3	m f and o	1
2335	Gibbons, Thomas, f..	3	8	m f and o	2
2236	Gammage, Wm, f....	2	12	m f and t	1
2300	Hardie, Edward, f..	2	12	m f and o	2
2271	Hammond, Geo, f...2	2	2	m f and o	31
2242	Hawthorne, Jos, f...2	12	12	m f and o	1
2243	Hawthorne, Thos, f..2	12	12	m f and o	1
2248	Harrison, Jas, f.....	2	12	m f and o	2
2391	Henley, James, f....	3	15	m f and o	1
2253	Hueston, Thos. H, f.2	12	12	m f and o	1
2364	Holmes, A. H, f....	3	14	m f and o	1
2393	Henry, Thos, f.....	3	15	m f and o	1
	Imley, Peter, f....	3	11	m f and t	1
2247	Insell, Charles, f....	2	12	m f and t	2
2366	Johnson, Wm, f....	3	15	m f and t	1
2367	Johnson, James, f...3	15	15	m f and oc	1
2368	Johnson, Wm, f....	3	15	m f and oc	1

6

No. on Roll.	Name and Occupation.	Con.	Lot.	—	P.O.
2212	Kernohan, W. T, f..2	5	5	m f and oc	36
2211	Kernohan, Robt.R, f.2	5	5	m f and oc	36
2311	Legg, James, f.....	3	8	m f and o	1
2256	Lang, Samuel, f.....	2	12	m f and o	1
j 2325	Legg, James L, f....	3	5	m f and o	31
2344	Laphorn, John, f...3	8,9,10	8,9,10	m f and o	1
j 2233	Legg, Thomas, f....	2	11,12	m f and t	1
j 2310	Legg, Samuel, f.....	3	8	m f and t	1
2312	Langford, Samuel, f.3	9	9	m f and t	1
j 2301	Logan, Alex, f....	2	12	m f and t	1
2254	Lairg, Alfred, f....	2	12	m f and t	1
2390	Milligan, Mr.....	3	15	m f and t	1
j 2328	Maylard, Philip, f...3	7	7	m f and o	31
2329	Maylard, John, f....	3	7	m f and oc	31
2402	Mitcheltree, J. R, butcher.....	3	16	m f and oc	1
j 2401	Mitcheltree, Joseph, butcher.....	3	16	m f and o	1
2330	Maylard, Alf. M, f..3	7	7	m f and oc	31
2234	Munro, J. B, f.....	2	12	m f and o	1
j 2386	Mitcheltree, Simon, f.3	15,16	15,16	m f and o	12
j 2385	Murdy, John, f.....	3	15	m f and t	1
2387	Mitcheltree, Jas, f..3	15,16	15,16	m f and oc	12
2241	McMullen, Thos. F, f.2	12	12	m f and o	2
2286	McCarthy, Patr'k, f..2	9	9	m f and o	1
2299	McDonough, Thos, f.2	12	12	m f and o	1
j 2355	McCarthy, John, f..3	12	12	m f and o	1
2245	Olsson, Gust.....	2	12	m f and t	2

9

POLLING SUB-DIVISION No. 8.

No. on Roll.	Name and Occupation.	Con.	Lot.	—	P.O.
j 2238	Porte, Thos F, f.....	2	12	m f and t	2
j 2282	Percival, Henry, f. { 3 7 } 2 8 }			m f and o	31
2231	Pope, Samuel, f.....	3	8	m f and o	1
2239	Porte, Gilbert J, f....	2	12	m f and oc	2
2272	Pope, W J, f.....	2	3	m f and oc	31
j 2352	Pryce, Fred, painter.	3	12	m f and o	1
2226	Ryan, Matthew, f....	2	11	m f and o	1
2228	Rourke, Charles, f....	2	11	m f and o	1
j 2231	Russell, Robert, f....	2	11	m f and o	2
2273	Russell, Alexander, f.2		4	m f and o	31
j 2313	Ross, Edward C, f. .2		12	m f and o	1
2317	Robinson, Edward, f.3		3	m f and o	31
j 2318	Robinson, Thos A, f.3		3	m f and o	31
2336	Robins, Simon, f....	3	8	m f and t	1
2374	Reid, William, f....	3	15	m f and o	1
2274	Russell, W O, f.....	2	4	m f and oc	31
j 2205	Read, Robert H, f....	2	1,2	m f and o	3
2216	Routledge, Robert, f.2		8	m f and o	36
2275	Russell, Charles, f....	2	4	m f and oc	31
2348	Ross, Robert John, f.3		12	m f and oc	1
2298	Rippon, John.....	2	12	m f and o	1
2246	Ridler, Jos, laborer..	2	12	m f and t	2

No. on Roll.	Name and Occupation.	Con.	Lot.	—	P.O.
j 2240	Scott, H H, f.....	2	12	m f and o	2
j 2279	Smith, John A, f....	2	7	m f and o	31
j 2381	Stockwell, Caleb, dyer	3	15	m f and o	1
j 2232	Summers, Geo H, f..	2	11	m f and t	2
j 2379	Sutherland, John, miller	3	15,16	m f and t	1
2251	Stephenson, Walter, f.2		12	m f and t	2
2280	Smith, Armon, f....	2	7	m f and oc	31
2281	Smith, Hubert, f....	2	7	m f and oc	31
2393	Thomas, John, f....	3	15	m f and oc	1
j 2278	Trebilcock, Chas, f. { 3 7 } 2 6 }			m f and o	31
j 2284	Tuke, Wm F, f.....	2	9	m f and o	1
2304	Taylor, John, f.....	2	12	m f and o	2
2310	Taylor, Chas, f.....	2	12	m f and o	2
2322	Tackaberry, Jas, f..	3	4	m f and o	31
j 2363	Tanton, Edmund, f..	3	14	m f and t	1
2218	Tuffin, George, f....	2	9	m f and oc	2
2260	Taylor, Samuel, f....	2	12	m f and oc	2
j 2305	Taylor, Frank, f....	2	12	m f and t	1
2285	Tuke, James M, f....	2	9	m f and oc	1
j 2257	Vander, Isodore.....	2	12	m f and t	1
j 2206	Wakeling, C W, f....	2	3	m f and o	31
j 2207	Weir, James, f.....	2	3	m f and o	3
j 2255	Waide, Daniel, brick maker.	2	12	m f and o	1
j 2316	Walters, Thos, f. { 3,2 1 } 3 2 }			m f and t	31
2289	Waide, Alex, f....	2	10,12	m f and o	1
j 2316	Wheaton, Samuel, f.3		1	m f and o	31
j 2345	Wright, John, f....	3	19	m f and o	1

No. on Roll.	Name and Occupation.
2346	Wright
2269	Walters
2360	Wright
j 2308	Walters
2309	Walters
2361	Wright
2362	Wright
j 2312	Walters
j 2290	Walters
j 2276	Walters
j 2277	Walters maker
2315	Walters
2270	Walters
2291	Walters
j 2268	Walters
PART 2 —	
Elect	
2249	Ascha
2314	Anderson
	ma
2341	Anderson
2366	Anderson
2335	Anderson

f and o 2
f and o 31
f and o 1
f and t 2
f and t 1
f and t 2
f and oc 31
f and oc 31
f and o 1
m f and o 2
m f and o 2
m f and o 31
m f and t 1
m f and oc 2
m f and oc 2
m f and t 1
m f and oc 1
m f and t 1
m f and o 31
m f and o 3
m f and o 1
m f and t 31
m f and o 1
m f and o 31
m f and o 1

No. on Roll.	Name and Occupation.	Con.	Lot.		P.O.
2346	Wright, Walter, f...	3	10	m f and oc	1
2269	Walters, Wm, f....	2	1	m f and oc	31
2360	Winnett, Edward, f.3	13		m f and o	2
j 2308	Warwick, Richard, f.2	12		m f and t	2
2309	Warwick, John, f...2	12		m f and oc	2
2361	Winnett, David R, f.3	13		m f and oc	2
2362	Winnett, Ed. S, f....3	13		m f and oc	2
j 2312	Waide, John, f.....2	12		m f and o	1
j 2290	Waide, Russel, f....2	10		m f and oc	1
j 2276	Walker, Wm, f.....2	5		m f and o	1
j 2277	Walker, John, brick-maker	2	5	m f and o	31
2315	Warwick, Wm, f...2	12		m f and oc	2
2270	Walters, John, f....2	1		m f and oc	31
2291	Waide, Fred, f....2	10		m f and oc	1
j 2268	Walters, Thos, f.....2	1		m f and t	31

152
2
154

PART 2—Persons entitled to vote at Municipal Elections only:

2249	Ashwell, Daniel, merchant.....	2	12		o 1
2314	Anthistle, Wm, tile maker	3	14	}	o 1
		2	12		
2341	Anderson, Mrs. D....	3	9		o
2366	Aores, Henry, f.....	3	15		o
2335	Anderson, James, f..	3	8		t 1

No. on Roll.	Name and Occupation.	Con.	Lot.		P.O.
2269	Belton, Mrs.....	2	1		o
2316	Belton, Mrs.....	3	2		o
2373	Boulton, Wm, f.....	3	15		o 1
2220	Bloomfield, Geo.....	2	9		o 1
2375	Bernard, Wm, hotel keeper.....	3	15		o 1
2233	Burwell, Mrs.....	2	11,12		o 1
2347	Brown, Richard, f....	3	11		o
2376	Bernard, Henry, letter carrier.....	3	15		oc
2267	Bell, Walter, f.....	2	12		o
2292	Brooks, Mr, f.....	2	11		o 2
2353	Burn, John, f.....	3	12		t 1
2209	Blackwell, Francis, f..	2	4		o
2377	Bernard, Charles.....	3	15		oc

2295	Campbell, D. M.....	2	11		o
2221	Collins, Geo, butcher..	2	9		o 1
2340	Cummings, Mrs. Wm..	3	9		o 1

2392	Dickerson, F, mechanic.	3	15		o 1
2229	Davis, Mrs.....	2	11		o
2264	Daley, F. W	2	12		o 1
2388	Dickerson, Mrs.....	3	15		o 1
2291	Depper, Chas.....	2	11		o 2
2326	Dicey, Hiram.....	3	6		o
2400	Delaney, Mrs.....	3	16		o
2265	Daley, R. A.....	2	12		o
2365	Daley, Mr.....	3	14		o 1
2347	Dyer, Charles, f.....	3	11		t 1
2308	Depper, Chas.....	2	12		o
2353	Dyer, Chas.....	3	12		t 1

No. on Roll.	Name and Occupation.	Con.	Lot.	—	P.O.	No. on Roll.	Name and Occupation.	Con.	Lot.	—	P.O.	No. on Roll.
2395	Evans, Mrs	3	15	o		2350	Murphy, Wm, laborer.	3	12	oc	1	2216
						2351	Murphy, John Jos	3	12	oc	1	2348
						2381	Marshall, Edw'd, gentleman	3	15,16	o	1	
2372	Fraggett, Mrs	3	15	o	1	2396	Murphy, Miss.	3	15	o		
2297	Francis, G W.	2	11	o	1							2236
						2346	McCarthy, Patrick, f	3	10	o		2332
						2353	McBeth, Talbot, lawyer.	3	12	o	1	2363
2234	Gammage, Mrs.	2	12	o		2379	McGarvey, Edward	3	15,16	o		2217
2234	Gammage, Wm, f.	2	12	oc	1	2311	McLaughlin, John, brick maker	2	12	o	2	2257
												2244
2389	Horton, Mrs Emily	3	15	o		2245	McGill, Wm	2	12	o		2297
2378	Hellmuth, I, lawyer	3	15	o	1	2254	McFarline, Samuel	2	12	o		
2362	Hodgins, Thomas D, gentleman	3	14	o	1	2334	McCarthy, George	3	8	o		
2307	Howard, Thos, blacksmith	2	12	o	1	2397	Puddicombe, Mr, gentleman	3	16	o		
2227	Howe, John	2	11	o	1							2230
2258	Hall, Thomas A.	2	12	o								2260
2222	Hyatt, John	2	9	o	1	2358	Perkins, John, butcher	3	12	t	1	2214
						2399	Patrick, Wm	3	15,16	o		2356
2286	Imley, Peter	2	10	o	1	2272	Pope, Mrs	2	3	o	31	2305
						2358	Perkins, Jas, butcher	3	12	o	1	
2287	Keays, G C, gentleman	2	10	o	1	2240	Porte, A W, gentleman	2	12	o		
2211	Kernohan, Mrs W.	2	5	o	1	2247	Proudfoot, Alex	2	12	o		
						2303	Powers, Laban, laborer	2	12	o		
2236	Legg, Thos, f.	2	12	o	1	2314	Pryce, Fred	2	12	o	1	
2349	Murphy, John, laborer	3	12	o	1	2252	Ryan, Mrs	2	12	o	1	
2293	Mitchell, Miss.	2	11	o	1	2301	Roe, Mrs	2	12	o		
						2336	Ross, Lizzie	3	8	o	2	
						2305	Ross, Fred L f.	2	12	o		
						2353	Ross, Richard f.	3	12	o	1	

POLLING SUB-DIVISION No. 8.

No. on Roll.	Name and Occupation.	Con.	Lot.	P.O.
2216	Ross, Jenn, f.....	2	9	o 1
2348	Ross, Wm, f.....	3	12	o
2236	Shaw, Michael, f.....	2	12	o 2
2332	Sledd, John, butcher...3	8,16		o 1
2363	Sage, Nelson.....	3	14	o
2217	Smallman, T. H, gentleman.....	2	9	o 1
2257	Stringer, Samuel.....	2	12	o
2244	Schram, H. R, bailiff. .2	12		o
2297	Stewart, Sam'l, gentleman.....	2	11	o 1
2230	Thompson, Mrs.....	2	11	o 1
2260	Taylor, Mrs. E.....	2	12	o 2
2214	Trebilcock, Thos, f.....	2	6,7,8	o 1
2356	Tennent, Mr, V. S.....	3	12	o 1
2305	Taylor, Charles, f.....	2	12	oc

No. on Roll.	Name and Occupation.	Con.	Lot.	P.O.
2294	Ward, John, laborer... 2	11		o
2302	Wallace, Jas, laborer .2	12		o 1
2335	Webster, Hope, f3	8, 9		o 1
2250	Walker, Wm. B.2	12		oc 1
2306	Waide, Margaret.2	12		o 1
2246	Wallace, Thomas.....2	12		o
2291	Warwick, Richard, f...2	11		t 2
2339	Webster, Mrs. R.....3	9		o
2330	Webster, Robert3	9		o

PART 3—Persons entitled to vote at Elections to the Legislative Assembly only:

2296	Gleeson, Patr'k, sexton.2	11		m f
2383	McLean, Thos, tollgate keeper.....	3	15	m f

POLLING SUB-DIVISION No. 9

Includes that part of the Township east of the Proof Line between the centre of Concession 3 and 7th Concession line, excepting Lots 14, 15 and 16 north of the river. Polling Place—Lot 8, Con. 4, north half.

PART 1—Persons entitled to vote at both Municipal Elections and Elections to the Legislative Assembly.

No. on Roll.	Name and Occupation.	Con.	Lot.	—	P.O.
j 2439	Ardiel, John, f.....	3	12	m f and o	1
628	Avery, Wm, f.....	5	4	m f and o	38
629	Avery, Charles, f.....	5	4	m f and oc	38
j 2440	Agur, John W, f...	4	5	m f and o	31
2421	Breen, Michael, f. {	3	7	m f and o	1
	{ 4	7	m f and t		
	{ 4	8	m f and o		
2422	Breen, John, f.....	3	7	m f and oc	1
j 2436	Blizard, Robert, f.	3	11	m f and o	1
j 2445	Breen, James, f.....	4	7	m f and o	1
j 2453	Belton, Samuel, f....	5	1	m f and t	37
j 570	Box, Thos D, f..... {	6	6	m f and o	1
	{ 5	7			
571	Box, R Frank, f....	6	6	m f and oc	1
663	Bradshaw, Samuel, hotel keeper.....	4	9	m f and oc	38
666	Bowers, John, f.....	4	7,8	m f and o	38
j 669	Barter, James, f....	4	5	m f and o	38
j 674	Barter, Joseph, f....	4	5	m f and t	38
j 589	Birrell, James, black-smith.....	5	8	m f and o	38
664	Bradshaw, Thomas, laborer.....	4	9	m f and oc	38
2423	Breen, Michael jr, f.	3	7	m f and oc	1
701	Brett, Wm, customs officer.....	4	12,13	m f and oc	1

No. on Roll.	Name and Occupation.	Con.	Lot.	—	P.O.
2429	Colmorgan, F, tailor.	3	8	m f and o	4
j 2457	Cookburn, George....	6	1,2	m f and o	37
j 565	Colbert, John, f....	6	8	m f and o	4
566	Colbert, John jr, f....	6	8	m f and oc	4
j 2444	Craig, Wm, f.....	4	7	m f and o	1
567	Colbert, Ernest, f....	6	8	m f and oc	4
2418	Dreany, Robert, f....	3	6	m f and o	2
2419	Dreany, Alfred, f....	3	6	m f and oc	2
j 2437	Dyer, Charles, f....	3	11	m f and o	1
670	Dickey, Harris B, f....	4	5	m f and oc	1
2438	Dyer, Thos, f.....	3	11	m f and oc	1
j 539	Fitzgerald, Geo, f....	6	6,7	m f and o	4
j 605	Foster, Thomas, f....	5	12	m f and o	1
j 606	Foster, Wm, f.....	5	12	m f and o	1
j 620	Fenwick, Richard, f..	5	6	m f and o	38
j 623	Fitzgerald, F T, f..	5	5	m f and o	38
j 630	Fitzgerald, Fenton, f.	5	3	m f and o	38
550	Fallon, Chas, f.....	6	1	m f and oc	4

No. on Roll.	Name and Occupation.	Con.	Lot.	—	O. R.
j 2404	Geddes, James, f...	3	1	m f and o	31
j 2406	Garlick, Wm, f...	3	2	m f and o	31
2407	Garlick Edmond, f...	3	2	m f and oc	31
546	Guest, W. W, f...	6	2	m f and o	4
547	Guest, Charles, f...	6	2	m f and oc	4
558	Gough, Richard A, f.6	11	m f and o	4	
j 556	Gough, Wm. T, f...	6	10,12	m f and o	38
557	Gough, Richard S, f.6	10,12	m f and oc	38	
j 575	Guest, Lancelot, f...	6	4	m f and o	4
j 2415	Guest, Edward, f...	3	5	m f and o	31
j 576	Guest, John W, f...	6	3	m f and o	4
608	Gatecliff, Henry, f...	5	11	m f and oc	38
j 615	Gorwill, Samuel, f...	5	9	m f and o	38
j 675	Guest, Richard L, f...	4	3	m f and o	38
2408	Garlick, Robert, f...	3	2	m f and oc	31
548	Guest, W. H, f.....6	2	m f and oc	4	
678	Guest, Richard W, f.4	1,2	m f and o	38	
j 2453	Guest, Thos. G, f....5	2	m f and o	38	
559	Gough, Richard, f...	6	11	m f and oc	4
679	Guest, James L, f....4	1,2	m f and oc	38	
2410	Garlick George, f....3	2	m f and oc	31	
2416	Guest, W. R, f.....2	5	m f and oc	31	
2430	Gooderham, Jos, f...3	8	m f and oc	1	
j 604	Geary, John, f....5	13,14	m f and o	1	
2405	Geddes, John, f.....3	1	m f and oc	31	
2409	Garlick, Wm, f.....3	2	m f and oc	31	
j 2442	Hawkins, Geo, f...{ 4 5 } mf & t & o			2	
j 2452	Holland, Geo, f.....5	1	m f and o	37	
614	Hale, Richard, f....5	10	m f and o	38	
648	Haskett, W. N, f....4	13	m f and o	1	
j 649	Haskett, David B, f.4	13	m f and o	1	
j 705	Hodgins, Richard, f.4	12	m f and o	38	
j 603	Hill, Wm, f.....5	13,14	m f and o	2	

No. on Roll.	Name and Occupation.	Con.	Lot.	—	O. R.
j 563	Husser, Thos, f.....6	9	m f and t	4	
j 564	Husser, Wm, f.....6	9	m f and t	4	
j 653	H. Jgins, Fred, f....4	12	m f and o	38	
j 704	Hodgins, T. S, hotel keeper.....4	13	m f and o	1	
j 589	Hunt, Wm. H, f....5	8	m f and o	38	
j 584	Ironsides, John, f...5	6,10	m f and t	38	
604	Irwin, Geo, laborer.	5	13,14	m f and t	1
j 650	Jackson, Thomas, f..4	12	m f and o	1	
706	Jackson, John, f....4	12	m f and o	1	
j 2428	Jeffries, Wm, f.....3	8	m f and t	2	
j 568	Knapton, Samuel, f..6	7	m f and o	4	
j 590	Knapton, Daniel, f..5	6	m f and o	4	
j 609	Kerr, James, f.....5	11	m f and o	38	
j 656	Loveless, Thos, f....4	11	m f and o	38	
715	Logan, Edward, f...3	12,13	m f and o	1	
716	Logan, Frank, f....3	12,13	m f and oc	1	
j 2417	Lewis, Wm, f.....3	5	m f and t	31	
668	Larway, John, f....4	5,6	m f and oc	38	

No. on Roll.	Name and Occupation.	Con.	Lot.	—	O R.
617	Mann, Burton, f....	5	8	m f and oc	38
651	May, George, f....	4	12	m f and t	2
j 671	Mitchell, George, f..	4	4	m f and o	38
j 2451	Martin, George, f..	4	1	m f and o	37
j 2411	Millar, Thomas, f...	3	2	m f and t	31
2435	Monteith, Edwin, f.	3	10	m f and oc	1
j 532	Murtagh, Michael, f..	3	12	m f and t	4
532	Murtagh, Ernest, f..	6	12	m f and oc	4
j 676	Moore, Alex, f.....	4	2	m f and t	31
j 2432	McGrady, James, f.3,4	9,10		m f and o	1
2433	McGrady, J J, f....	3,4	9,10	m f and oc	1
657	McLeod, Wm, f....	4	10	m f and o	38
100 658	McLeod, Wm jr, f..	4	10	m f and oc	38
j 667	McLeod, Joseph, f..	4,5	7,8	m f and o	1
659	McLeod, John, f....	4	10	m f and oc	38
2434	McGrady, M J, f....	3,4	9,10	m f and oc	1
560	McAdams, James, f..	6	10	m f and oc	4
561	McAdams, Theo, f...	6	10	m f and oc	4
562	McAdams, David, f..	6	10	m f and oc	4
j 621	Newman, Elias, f..	{4 5}	{7 6}	{m f and o m f and o}	{38 38}
622	Newman, Alfred, f..	5	6	m f and oc	38
2426	O'Rourke, Wm, f....	3	8	m f and o	1
2427	O'Rourke, James, f..	3	8	m f and oc	1
j 2449	Oliver, George, f....	4	9,10	m f and o	1
617	O'Brien, John W, f..	5	8	m f and oc	38
619	O'Brien, Albert H, f..	5	8	m f and oc	38
618	O'Brien, Samuel, f..	5	8	m f and oc	38
j 593	Oliner, Elon, f.....	5	3	m f and o	4
2425	Pack, Wm, f.....	3	7	m f and o	2

No. on Roll.	Name and Occupation.	Con.	Lot.	—	O R.
j 533	Ralph, Robert, f....	6,7	11	m f and o	4
j 534	Ralph, Thomas, f....	6,7	11	m f and o	4
580	Ralph, Robert, f....	5	12	m f and o	38
585	Ralph, James, f....	5	9,10	m f and o	4
702	Ryan, Patrick, f....	4	13	m f and o	1
616	Robinson, W, f.....	5	9	m f and oc	38
Roberts John H - 6 - M-7-45					
602	Smbert, Alex, f....	4	9,10	m f and o	38
j 2446	Shaw, James, f....	4	8	m f and o	1
j 2447	Summers, Thomas, f..	4	8	m f and o	38
j 531	Sifton, John J, f....	6	13	m f and o	11
j 536	Shoebottom, Jas, f..	6	9,10	m f and o	4
j 574	Stephens, J W, f....	6	5	m f and o	4
582	Stanfield, Joseph, f..	5	11	m f and oc	38
j 583	Stanfield, Wm, f....	5	11	m f and o	38
j 592	Stephens, James, f..	5	4	m f and o	4
j 610	Scandrett, Rich, f..	5	10	m f and o	38
j 611	Scandrett, George, f..	5	10	m f and o	38
612	Stanfield, Richard, f.	5	10,11	m f and o	38
j 613	Stanfield, James, f..	5	10	m f and o	38
j 652	Stephens, Wm, f....	4	12	m f and o	38
714	Sifton, Henry, f....	3	13	m f and o	1
j 2448	Smith, Arthur, f....	4	9	m f and o	38
j 537	Shoebottom, J H, f	6	8	m f and o	4
2454	Spice, Wilfred, f....	5	1	m f and oc	37
j 591	Sample, Wm Jas, f..	5	5,6	m f and o	4
673	Smith, Homer, f....	4	3,4	m f and oc	38
j 699	Sanders, Lewis, f....	4	13	m f and t	12
655	Staples, J R, f.....	4	11	m f and oc	38
j 581	Thomas, Charles, f..	5	11	m f and t	38

j 2414	
j 540	
541	
572	
542	
573	
627	
j 624	
625	
626	
661	
660	
702	
j 544	
545	
555	
j 700	
j 2450	
PART 2	
EL	
2410	
2420	
696	
695	

POLLING SUB-DIVISION No. 9.

49

No. on Roll	Name and Occupation.	Con.	Lot.		P.O.
j 2414	Tackabury, Sam, f...	3	4	m f and o	31
j 540	Talbot, Thos. N, f...	6	4,5	m f and o	4
	541 Talbot, Wm. E, f...	6	4,5	m f and oc	4
	572 Talbot, Wm. J, f...	6	5,6	m f and o	4
	542 Talbot, Chas. F, f...	6	4,5	m f and oc	4
	573 Talbot, Wm, M, f...	6	5,6	m f and oc	4

	627 Uptigrove, John R, f..	5	4	m f and oc	38
j 624	Uptigrove, W. S, f..	5	4	m f and o	38
	625 Uptigrove, H. J, f...	5	4	m f and oc	38
	626 Uptigrove, E. H, f..	5	4	m f and oc	38

	661 Wilson, Wm. Jas, f..	4	10	m f and oc	38
	660 Wilson, James, f...	4	10	m f and o	38
	702 Worrall, Stephen, f..	4	13	m f and o	1
j 544	Wyatt, John, f.....	6	3	m f and t	4
	545 Wyatt, John, jr, f...	6	3	m f and oc	4
	555 Worrall, James, f...	6	12	m f and o	1

j 700	Wyatt, George, f....	4	13	m f and o	1
j 2456	Walters, Geo, f.....	5	2	m f and t	31

PART 2—Persons entitled to vote at Municipal Elections only.

2410 Alexander, Mrs. T... 3 2 o

2420 Bickley, John, f..... 3 7 o

696 Brett, George..... 4 13 o

698 Brett, Geo. Henry... 4 13 oc

	532 Colbert, Benjamin...	4	6,12		o
	2443 Cronyn, V, lawyer...	4	6		o 1
	538 Carry, Margaret.....	6	8		o 4

2417 Dyer, Luke, f..... 3 5 o

653 Dart, Joseph, f..... 4 11 t

654 Dart, Samuel, f..... 4 11 t

549 Fallen, Mrs. S..... 6 1 o 4

581 Fawcett, Simon W... 5 11 o

542 Fitzgerald, James, merchant... 6,7 4 o

630 Fitzgerald, Geo, f.... 5 2 o

543 Guest, W. A, f..... 6 3 o 8

Guest-Thorly 6-2 o, ee

535 Harvey, Mrs... 6 10 o

607 Hodgins, Thos. D, f.. 5 11 o 1

2453 Hookway, Robert, f.. 5 1 o

2439 Howay, Thomas, f. { 4 2 o } 31
 { 4 1 t }

677 Howay, Walter, f.... 4 2 oc 31

542 Judd, Robert, f..... 6 4 t 4

569 Kerr, Henry, brick layer..... 6 7 o 4

No. on Roll.	Name and Occupation.	Con.	Lot.	—	P.O.
2431	Legg, Mrs.	3	8	o	1
665	Leathorn, Robt, gentleman	4	8	o	
665	Leathorn, Jos, butcher	4	8	oc	

2435	Monteith, Wm, f	3	10	o	
2439	Meredith, W. R, judge	4	1	o	
2450	Martin, John, f	4	1	o	
701	Moore, Mrs.	4	12,13	o	1

2438	McCarthy, John, f	3	11	o	
------	-------------------	---	----	---	--

2428	McLeod, Joseph, f	3	8	o	
------	-------------------	---	---	---	--

503	Nugent, Martin E, brakeman	6	9	o	1
-----	----------------------------	---	---	---	---

586	O'Brien, Jos. W, f	5	9	o	
-----	--------------------	---	---	---	--

2420	O'Rourke, Wm, f	3	7	o	
------	-----------------	---	---	---	--

617	O'Brien, Mrs. J	5	8	o	
-----	-----------------	---	---	---	--

587	O'Brien, John W, f	5	9	t	
-----	--------------------	---	---	---	--

No. on Roll.	Name and Occupation.	Con.	Lot.	—	P.O.
2413	Rogers, Mrs. A	3	4	o	31
667	Rowell, Wm, f	4	6	o	5

672	Smith, Mrs.	4	3,4	o	38
-----	-------------	---	-----	---	----

654	Stanton, Mrs.	4	11	o	
-----	---------------	---	----	---	--

539	Talbot, W. J, f	6	6	o	
-----	-----------------	---	---	---	--

554	Talbot, Thos. H, f	6	13	o	11
-----	--------------------	---	----	---	----

2424	Tapp, Mr, f	3	7	o	
------	-------------	---	---	---	--

651	White, George, f	4	5,6	o	
-----	------------------	---	-----	---	--

2411	Watson, Arthur J, f	3	2	o	
------	---------------------	---	---	---	--

2410	Walls, Thos, f	3	2	t	1
------	----------------	---	---	---	---

2441	White, John, f	4	4	o	1
------	----------------	---	---	---	---

2412	Walls, Thos, f	3	3	o	1
------	----------------	---	---	---	---

584	Watson, Richard, f	5	6,10	o	38
-----	--------------------	---	------	---	----

	Worrall James	6	12	o	
--	---------------	---	----	---	--

PART 3—Persons entitled to vote at Elections to the Legislative Assembly only :

NONE.

Ed McKinnon Charles 5.8.17

Inclu

PART
M
L

No. on Roll.

j 389 A

j 390 A

426 A

j 456 A

470 A

471 A

j 359 A

j 371 A

j 349 B

j 430 B

431 B

j 457 B

j 401 B

j 360 B

j 386 B

j 387 B

352 B

j 376 B

405 B

j 406 Col

j 500 Car

j 501 Car

445 Cor

j 446 Cor

POLLING SUB-DIVISION No. 10

Includes that part of the Township east of the Proof Line, between the 7th and 11th Concession lines, excepting lots 14, 15 and 16, in the 7th, 8th and 9th Concessions, and lots 13, 14 15 and 16, in the 10th Concession. Polling Place—Atkinson's shop, Lot 9, Con. 8, north half.

PART 1—Persons entitled to vote at both Municipal Elections and Elections to the Legislative Assembly.

No. on Roll.	Name and Occupation.	Con.	Lot.	—	P.O.
j 389	Ardiel, Jonathan, f...	9	2	m f and o	8
j 390	Ardiel, Joseph, f....	9	2	m f and o	8
426	Atkinson, Charles, f...	8	9	m f and o	4
j 456	Ardiel, John H, f....	8	5	m f and o	4
470	Armitage, Richard, f...	7	9	m f and o	4
471	Armitage, W. H, f....	7	9	m f and oc	4
j 359	Ardiel, George, f....	10	11	m f and o	5
j 371	Ardiel, Richard, f....	10	2	m f and o	8
j 349	Beer, Robert, f.....	10	4	m f and o	5
j 430	Burley, James, f....	8	5	m f and o	4
431	Burley, Francis, f....	8	5	m f and oc	4
j 457	Burley, John, f.....	8	3	m f and t	4
j 401	Bere, Wm, f.....	9	11,12	m f and t	11
j 360	Broome, Paul T, f....	10	10	m f and o	5
j 386	Brimblecombe, Dav, i	9	5	m f and t	5
j 387	Brimblecombe, Jas, f.	9	5	m f and t	5
352	Blackwell, Richard, f.	10	1	m f and oc	4
j 376	Blight, Wm, f.....	9	13	m f and t	11
405	Boyce, Henry, f.....	9	10	m f and oc	4
j 406	Colbert, Thomas, f....	9	9	m f and o	4
j 500	Carry, Wm, f.....	7	8	m f and o	4
j 501	Carry, George, f.....	7	7	m f and o	4
445	Corsant, Ebenezer, f..	8	13,14	m f and t	11
j 446	Corsant, James, f....	8	13,14	m f and t	11

No. on Roll.	Name and Occupation.	Con.	Lot.	—	P.O.
j 377	Donaldson, Stephen, f.	9	12	m f and o	5
j 388	Donaldson, Duncan, f.	9	13	m f and o	11
399	Donaldson, Alex, f...	9	12	} m f and o	11
		8	13		
j 477	Dewan, Michael D, f..	7	2,3	m f and o	4
478	Dewan, Patriek, f....	7	2	m f and oc	4
j 358	Donaldson, Robt. F, f.	10	12	m f and o	5
479	Dewan, James, f....	7	2	m f and oc	4
j 369	Elliott, Alex, f.....	10	3	m f and o	5
j 410	Fraser, David, f.....	9	4,6	m f and o	4
j 413	Fraser, Hugh, f.....	9	3,4	m f and o	4
j 476	Fitzgerald, Fred, f..	7	4,5	m f and o	4
414	Fraser, Robert, f....	9	3,4	m f and oc	4
j 367	Gowan, Jonathan, f..	10	4	m f and o	5
368	Gowan, Thomas, f....	10	4	m f and oc	5
j 388	Gowan, W. C, f.....	9	4	m f and o	5
429	Gowan, Robt, f....	8	7	m f and oc	4
j 428	Gowan, Chas. W, f...	8	7	m f and o	4
j 509	Guest, Thos. V, f....	7	3	m f and o	4
j 466	Guest, George, f.....	7	13	m f and t	11

at Elections
ly:
5.8.27

No. on Roll.	Name and Occupation.	Con.	Lot.	—	P. O.
j 412	Harris, Richard, f....	9	5	m f and o	4
j 415	Howard, Wm, f.....	9	2	m f and o	4
	451 Hudson, Charles, f....	8	9	m f and o	4
j 404	Hudson, George E, f. {	8 12		m f and o	4
		9 10			
j 468	Hudson, Thos B, f....	7	11	m f and o	4
	499 Hurlock, John, f.....	7	8	m f and oc	4
j 512	Harding, Fred, f.....	7	1,2	m f and o	4
j 384	Hayes, Thos, f.....	9	6	m f and t	5
	385 Hayes, Johr, f.....	9	6	m f and oc	5
	469 Hetherington, Nathan, f.	7	10	m f and oc	4
j 510	Harding, R H, f.....	7	1,2	m f and t	
	392 Jolly, Fred, f.....	.9	1	m f and oc	8
j 507	Judd, Robert, f.....	7	4	m f and t	4
j 420	Johnston, James, f. {	9 12		m f and t	11
		8 13			
	j 496 Kestle, Thomas, f....	7	9	m f and o	4
	402 Loveless, Robert, f....	9	10	m f and o	38
j 458	Lewis, Francis, f.....	8	2	m f and o	8
j 492	Lewis, Francis, f.....	7	10	m f and o	4
	494 Lewis, John, f.....	7	9	m f and o	4
	493 Lewis, George, f.....	7	10	m f and oc	4
	459 Lewis, Thos, f.....	8	2	m f and oc	4
	495 Langford, Leonard, f...7		9	m f and oc	4
	403 Loveless, Robt S, f....	9	10	m f and oc	4
	470 Lewis, John, f....	8	2	m f and oc	4

No. on Roll.	Name and Occupation.	Con.	Lot.	—	P. O.
j 435	Morris, John, f.....	{ 9 4		m f and t	4
		{ 8 3			
	422 Moir, John, f.....	8	11	m f and o	11
	434 Morris, Robert, f....	8	3	m f and o	4
j 378	Moir, George, f.....	9	11	m f and o	11
j 350	Maynes, David, f.....	10	3	m f and t	5
	423 Moir, John jr, f.....	8	11	m f and oc	11
j 455	Megaffin, George, f..	.8	6	m f and o	4
	463 McGuffin, Fred, f....	8	1	m f and oc	8
	461 McGuffin, James, f...8		1	m f and o	3
	462 McGuffin, Chas, f....	8	1	m f and oc	8
j 449	McCullough, Thos, f..	8	10	m f and o	4
	450 McCullough, H, f....	8	10	m f and o	4
	473 McGuffin, Henry, f...7	5,6		m f and o	4
j 474	McGuffin, James, f...7	5,6		m f and o	4
	430 McGuffin, A J, f.....	7,8	1	m f and oc	8
	464 McGuffin, Joseph, f...8		1	m f and oc	8
	344 Needham, Thos, f....	10	9,8	m f and oc	5
	343 Needham, Walter, f..	10	8,9	m f and oc	5
j 361	Needham, Thos, f....	10	9	m f and o	5
	345 Needham, Joseph, f...10		8	m f and oc	5
	508 Newton, James, f....7		4	m f and oc	4
	503 Phillips, Charles, f...7		7	m f and oc	4
	502 Phillips, Wm, f.....7		7	m f and t	4
j 453	Powell, Richard A, f {	8 7		m f and o	4
		7 7			
j 447	Purvis, Joseph, f....	8	12,13	m f and t	11
	454 Powell, Arthur H, f..8		7	m f and oc	4

No. on Roll.
j 478
504
505
j 341
j 365
j 421
366
432
433
j 351
j 364
371
372
j 380
j 381
j 346
j 363
382
383
j 407
408
409
497

POLLING SUB-DIVISION No. 10.

53

No. on Roll.	Name and Occupation.	Con.	Lot.	P.O.
j 475	Perkins, Josephus, f..7	4	m f and o	4
504	Phillips, Albert, f...7	7	m f and oc	4
505	Phillips, Walter, f...7	7	m f and oc	4
j 341	Robb, James, f.....10	11,10	m f and o	5
j 365	Roberts, Edward, f. { 9 3 } { 10 5 }		m f and o	5
j 421	Roberts, Mark, f....8	12	m f and o	5
366	Roberts, Wilbert, f...10	5	m f and oc	5
432	Robins, John, f.....8	4	m f and t	4
433	Robins, Wm, f.....8	4	m f and oc	4

No. on Roll.	Name and Occupation.	Con.	Lot.	P.O.
j 427	Shoebottom, Rich, f..8	8	m f and o	4
j 452	Shoebottom, J. E, f..8	8,	m f and o	4
j 472	Shoebottom, W. H, f.7	8	m f and o	4
j 391	Salmon, Wm, f.9	1	m f and o	8
j 490	Stephens, Thos. H, f.7	12	m f and t	4
498	Stanley, James Alf, f.7	8	m f and oc	4
j 506	Shoebottom, J. H, f..7	6	m f and o	4
467	Smibert, James, f...7	12	m f and oc	11
j 411	Sandall, Alfred, f....9	6	m f and t	4

j 351	Shoebottom, J. M, f..10	2	m f and o	5
j 364	Sanbourn, Simon, f...10	7	m f and o	5
371	Salmon, James, f.....10	1	m f and o	8
372	Salmón, Levi, f.10	1	m f and oc	8
j 380	Shoebottom, T. W, f..9	9	m f and o	4
j 381	Shoebottom, W. M, f.9	8	m f and o	4
j 346	Smibert, Wm, f.....10	6	m f and o	5
j 363	Shoebottom, Jas. A, f.10	8	m f and t	4
382	Sanborn, Geo, f.....9	7	m f and o	5
383	Sanborn, Chas, f.....9	7	m f and oc	5
j 407	Shoebottom, I. H, f..9	8	m f and o	4
408	Shoebottom, Isaac, f..9	7	m f and o	4
409	Shoebottom, J. I, f...9	7	m f and oc	4
497	Stanley, Samuel, f....7	8	m f and o	4

j 425 Turner, Edward, f....8 9 m f and t 4

j 347 Webster, Chas, f.10 5 m f and o 5

j 436 Wonnacott, Thos, f. { 8 4 }
 { 8 3 } m f & o & t 4

j 491 Webber, John E, f...7 11 m f and t 4

j 348 Webster, Robt, f....10 5 m f and o 5

j 379 Williams, John, f....9 10 m f and t 5

j 448 Walker, John, f8 11 m f and t 11

116

PART 2—Persons entitled to vote at Municipal Elections only:

No. on Roll.	Name and Occupation.	Con.	Lot	—	P.O.
350	Baliffe, James H, f.....	10	3	o	
384	Colbert, Wm, f.....	9	6	o	
425	Carry, Mrs.....	8	9	o	
424	Campbell, Mrs.....	8	10	o	
507	Fitzgerald, Jas, f.....	6,7	4	o	1
414	Fraser, Miss Helen	9	4	o	
480	Gillies, S, f.....	7	1	o	1
386	Herbert, Sidney, f.....	9	5	o	
490	Harrison, Chas, f.....	7	12	o	
510	Harding, W R, f.....	7	1,2	o	1
345	Hudson, Thos, f.....	10	7	o	
511	Harding, Chas, f.....	7	1,2	o	
339	Ironside, Rob, f.....	10	12	o	
339	Ironside, Alex, f.....	10	12	t	
400	Johnston, James, f.....	9	12		t
376	Lawrence, Benjamin, f..	9	13	o	
437	McGuffin, Mrs.....	7,8	1	o	
401	McGuffin, Wm, f.....	9	11,12	o	
342	Needham, Jane.....	10	8	o	
341	Needham, Mrs R.....	10	8,9	o	
475	Perkin, Wm, f.....	7	4	o	
340	Robb, Adam, f.....	10	10,11	o	
348	Rumball, George, f.....	10	4	o	
457	Sinclair, Margaret.	8	3	o	
467	Smibert, Mrs	7	12	o	
491	Shoebottom, Mrs	7	11	o	
466	Sifton, John F, f.....	7	13	o	
351	Shoebottom, Isaac H, f..	10	1	o	
362	Shoebottom, H W, f.....	10	8	o	7
491	Shoebottom, E A, f.....	7	11	o	1
491	Shoebottom, T M, f.....	7	11	o	1
429	Shoebottom, J A, f.....	8	6	o	

No. on Roll.	Name and Occupation.	Con. Lot.	—	O R
436	Wonnacott, Robt, f.....	8 3	o	1

PART 3—Persons entitled to vote at Elections to the Legislative Assembly only :

No. on Roll.	Name and Occupation.	Con. Lot.	—	O R
--------------	----------------------	-----------	---	--------

NONE.

P.O.

t

o

o

o

o

o

o

o

o

o

o

o

o

o

o

o

o

o

7

1

1

POLLING SUB-DIVISION No. 11

Includes that part of the Township east of the sideroad between Lots 12 and 13,
from the 11th Concession line to the centre of Concession 13. Polling Place—
Bryanston.

PART 1—Persons entitled to vote at both Municipal Elections and Elections to the Legislative Assembly:

No. on Roll.	Name and Occupation	Con.	Lot.	—	P.O.
294	Armitage, John, f....	12	9	m f and o	5
296	Armitage, Chas, f....	12	9	m f and oc	5
318	Arbuckle, Henry, f....	11	8	m f and oc	5
295	Armitage, John jr, f....	12	9	m f and oc	5
j 318	Burnett, Thos, f....	11	8	m f and o	5
j 182	Beattie, Wm E, f....	13	12	m f and o	10
j 239	Burnett, Daniel, f....	12	9	m f and o	5
j 247	Burnett, John, f....	12	5	m f and o	5
j 269	Balliffe, John, f....	11	9	m f and o	5
300	Balliffe, Chas W, f....	11	9	m f and o	5
312	Blackwell, Wm, f....	11	9	m f and e	5
j 334	Byrne, Joseph, f....	11	2	m f and o	5
j 242	Bailiffe, Jas H, f....	12	8	m f and o	5
291	Bell, Walter, f....	12	9	m f and oc	5
290	Bell, John, f....	12	9	m f and o	5
193	Boyne, George, f....	13	7	m f and t	5
194	Boyne, Benjamin, f....	13	7	m f and oc	5
j 218	Berryhill, Jas, f....	12	5	m f and o	5
j 333	Cornish, Wm, f....	11	4	m f and t	5
j 197	Coleman, George, f....	13	4	m f and o	5
308	Cheney, John, f....	11	9	m f and o	5
j 214	Dickenson, Wm, f....	12	6,8	m f and o	5
215	Dickenson, Chas, f....	12	6,8	m f and o	5
j 235	Dann, Richard, f....	12	11	m f and o	5
j 236	Dann, Joseph, f....	12	10	m f and o	5
j 274	Dann, Robert, f....	11	4	mf & o & t	5
283	Dann, Wm H, f....	12	9	m f and oc	5
j 328	Dann, Edward, f....	11	8	m f and o	5
315	Dann, Joseph, f....	11	8	m f and o	5
299	Dann, Albert, f....	11	9	m f and o	5
j 238	Dann, George, f....	12	9	m f and o	5
316	Dann, Wm John, f....	11	8	m f and oc	5
317	Dann, Charles, f....	11	8	m f and oc	5
j 213	Dann, David, f....	12	10	m f and t	5
275	Dann, David R, f....	11	4	m f and oc	5
287	Deacon, Rev Mr, f....	12	9	m f and oc	5
304	Dann, Joseph Wm, f....	11	9	m f and o	5
j 327	Dann, Wm, f....	11	9	m f and t	5

POLLING SUB-DIVISION No. 11.

57

No. on Roll.	Name and Occupation.	Con. Lot.	—	P.O.
188	Easton, George, f...	{ 12 5 13 8	mf & o & t	5
j 199	Elliott, Wm, f.....	13 2,3	m f and o	6
j 221	Elliott, James, f.....	12 3	m f and o	6
j 237	Elliott, Francis, f....	12 10	m f and o	5
245	Elliott, John, f.....	12 6	m f and o	5
246	Elliott, John jr, f....	12 6	m f and oc	5
252	Elliott, John, f.....	12 1	m f and o	34
253	Elliott, John jr, f....	12 1	m f and oc	34
254	Elliott, Robert, f.....	12 1	m f and oc	34
189	Easton, George K, f...13	8	m f and oc	5
j 280	Elliott, James, f.....	11 1	m f and o	34
200	Elliott, Wm James, f.13	2,3	m f and oc	6
246	Elliott, Alex, f.....	12 6	m f and oc	5
j 211	Flynn, Edward, f.....	12 12	m f and t	10
j 297	Goulding, Jos, hotel keeper.....	11 9	m f and t	5
j 303	Grant, Alex, merchant.	11 9	m f and o	5
j 202	Hayes, R W, f....	13 1	m f and o	6
j 224	Hardy, Charles, f.....	12 1	m f and o	6
j 233	Hudson, Thos, f....	{ 12 11 12 12	t m f and o	5
j 183	Hudson, John, f.....	13 11	m f and o	5
j 201	Hardy, Alfred, f.....	13 2	m f and o	6
234	Hudson Wilbert, f....	12 12	m f and oc	5

No. on Roll.	Name and Occupation.	Con. Lot.	—	P.O.
j 265	Ironside, Alex, f....	{ 11 12 11 12	t m f and o	5
j 276	Johnston, Wm, f....	11 3	m f and o	5
277	Johnston, Robt, f....	11 3	m f and oc	5
278	Johnston, Mowat, f....	11 3	m f and oc	5
j 319	Kestle, Fred, merchant.	11 8	m f and o	5
j 326	Kimball, Daniel, f....	11 9	m f and o	5
307	Kimball, George, f....	11 9	m f and o	5
311	Kimball, Norman, f....	11 9	m f and t	5
j 288	Lumsden, Joseph, f....	12 9	m f and o	5
j 272	Marshall, Chas, f....	11 6	m f and o	5
j 309	Morrow, Stewart, f....	11 9	m f and t	5
284	Morrow, Robert, f....	12 9	m f and o	5
j 198	Marshall, John, f....	13 4	m f and o	5
j 240	Mardlin, George, f....	12 8	m f and t	5
j 241	Mardlin, Thomas, f....	12 8	m f and t	5
306	Morrow, Joseph, f....	11 9	m f and t	5
331	Marsh, Wm, f.....	11 7	m f and oc	5

No. on Roll.	Name and Occupation.	Con.	Lot	—	Q
185	McRoberts, Robert, f.	13	9	m f and o	5
186	McRoberts, W. A, f.	13	9	m f and oc	5
j 251	McGuffin, J. W, f.	{11 2 12 2	2	m f and o	34
j 273	McPherson, Dan, f.	11	5	m f and o	5
298	McRoberts, David, f.	11	9	m f and o	5
330	McLaren, Robert, f.	11	8	m f and oc	5
187	McRoberts, Well'gn, f.	13	9	m f and oc	5
j 267	McRoberts, Chambers, f.	11	10	m f and t	5
329	McLaren, Robt, jr, f.	11	8	m f and oc	5
268	McRoberts, Wm. S, f.	11	10	m f and oc	5
j 184	Nicholson, Isaac, f.	13	10	m f and o	5
j 195	Needham, T. W, f.	13	6	m f and o	5
j 324	Needham, Hamil, f.	11	11	m f and o	5
j 325	Needham, Wm, f.	11	10	m f and o	5
j 196	Needham, Isaac, f.	13	5	m f and o	5
285	Norton, Jas, laborer.	12	9	m f and t	5
j 220	Park, Samuel, f.	12	4	m f and o	5
j 270	Powell, Stephen, f.	11	7	m f and o	5
289	Perry, William.	12	9	m f and o	5
j 332	Powell, Amb. B, f.	11	5,6	m f and o	5
271	Powell, Geo. W, f.	11	7	m f and oc	5
250	Rumball, J. Clark, f.	12	3	m f and oc	5
j 249	Rumball, George, f.	12	3	m f and o	5
j 213	Robson, John C, f.	12	10	m f and o	30
j 190	Rowell, Wm, f.	13	8	m f and t	5
302	Raymond, Seldon, f.	11	9	m f and oc	5
191	Rowell, Geo. A, f.	13	8	m f and oc	5
192	Rowell, John E, f.	13	8	m f and oc	5
249	Rumball, Joseph, f.	12	3	m f and oc	5

No. on Roll.	Name and Occupation.	Con.	Lot.	—	Q
j 222	Thompson, John, f.	12	2	m f and o	6
j 223	Thompson, Wm, f.	12	2	m f and o	6
292	Thompson, Jas, f.	12	9	m f and o	5
293	Thompson, Ed. E, f.	12	9	m f and oc	5
322	Townsend, Harvey, f.	11	12	m f and oc	5
323	Townsend, Maitland, f.	11	12	m f and oc	5
j 244	Wood, William, f.	{12 7 11 8		m f and o	5
j 212	White, Charles, f.	12	11	m f and o	5
243	Wood, Benj, f.	{11 8 12 13,7		m f and o	5
281	Way, John, f.	11	1	m f and oc	34
313	Wood, George, f.	11	8	m f and o	5
j 266	Walsh, John, f.	11	11	m f and o	5
314	Wood, Wm, f.	11	8	m f and oc	5
301	Yung, Robert, shoe-maker.	11	9	m f and oc	

PART 2—Persons entitled to vote at Municipal Elections only.

219	Berryhill, Joseph, f.	12	5	o	
248	Barnett, Thos, f.	12	3	o	5

No. on Roll.
279 C
305 C
267 Da
283 Da
268 Da
216 Di
246 Ell
211 Fer
310 Far
198 Fle
333 Guer
297 Gou
217 Hob
269 Hud

POLLING SUB-DIVISION No. 11.

and o 6
and o 6
and o 5
and oc 5
and oc 5
and oc 5

and o 5
and o 5
and oc 34
and o 5
and o 5
and oc 5

and oc

Municipal

o
o 5

No. on Roll.	Name and Occupation.	Con.	Lot.	P.O.
279	Coleman, Mrs E.	11	2	o 5
305	Carry, Mrs R.	11	9	o 5
267	Dann, Albert, f.	11	10	o
283	Dann, Mrs S.	12	9	o 5
208	Dann, George, f	11	9	o 5
216	Dickenson, Miss E.	12	8	o 5
246	Elliott, John, f.	12	6	o
211	Ferguson, David, f.	12	12	o
310	Farrar, Mrs	11	9	o
198	Fletcher, Mrs J.	13	3	o
333	Guest, W R, f.	11	3	o
297	Goulding, T B, oil man.	11	9, 8	o
217	Hobbs, Richard, f.	12	7	o
269	Hudson, Thos, f.	11	8	o

No. on Roll.	Name and Occupation.	Con.	Lot.	P.O.
318	Ironside, Robert, cattle dealer.	11	12	o
248	Marshall, John, f.	12	3	o 5
282	McRoberts, Ann J.	12	9	o
196	Needham, Mrs T.	13	5	o
213	Needham, Walter, f	12	9	o
213	Needham, Ham, f	12	9	t
190	Rowell, Arth, policeman.	13	8	o
334	Shoebottom, T W, f.	11	1	o 4
330	Smibert, Wm, f	11	8	o 5
247	White, Charles, f.	12	4	o 5
234	Walsh, John, f.	12	11	o 5
193	Wood, Benjamin, f.	13	7	o

PART 3—Persons entitled to vote at Elections to the Legislative Assembly only:

Delton W H 12.8 2/7 *W*
McLeod R C NONE 12.9-12/7 *W*

POLLING SUB-DIVISION No. 12

Includes that part of the Township east of the sideroad between lots 12 and 13 and north of the centre of Concession 13. Polling Place—Lot 8, con 14, north half.

PART 1—Persons entitled to vote at both Municipal Elections and Elections to the Legislative Assembly.

No. on Roll.	Name and Occupation.	Con.	Lot.	—	P.O.
j 88	Ashworth, David, f.	15	9	m f and o	30
166	Bunn, Wm, f.	13	12	m f and oc	10
55	Blatchford, Wm, f.	15	7	m f and oc	5
54	Blatchford, Eph, f.	15	7	m f and oc	5
j 165	Bunn, Thomas, f.	$\left. \begin{matrix} 14 & 12 \\ 13 & 12 \end{matrix} \right\}$		m f and o	10
99	Braithwaite, Warner, f.	15	3,4	m f and oc	6
j 97	Braithwaite, Wm, f.	15	4	m f and o	6
98	Braithwaite, Geo, f.	15	3,4	m f and o	6
101	Bisbes, Jas: B, f.	$\left. \begin{matrix} 14 & 3 \\ 15 & 2,3 \end{matrix} \right\}$		m f and o	6
j 147	Bulyea, Nelson, f.	14	5,6	m f and o	6
j 148	Bulyea, Fred, f.	14	5	m f and o	6
j 155	Burnett, David, f.	14	2	m f and o	6
j 177	Bulyea, Henry, f.	13	2	m f and o	6
j 33	Boyne, Charles, f.	16	4	m f and o	6
j 129	Bisbee, Edwin L, f.	14	3	m f and o	6
100	Braithwaite, E, f.	15	3,4	m f and oc	6
102	Bisbee, Sidney, f.	15	2,3	m f and oc	6
149	Bulyea, Nelson, f.	14	5	m f and oc	6

No. on Roll.	Name and Occupation.	Con.	Lot.	—	P.O.
j 93	Davis, Harry, f.	15	6,7	m f and t	30
j 172	Dickenson, James, f.	13	7	m f and o	5
j 91	Dann, John, f.	15	7	m f and o	30
j 19	Dann, John J, f.	16	9	m f and t	30

j 53	Eedy, Charles, f.	15	8	m f and o	7
j 21	Eedy, Joseph W, f.	16	8	m f and o	7

j 66	Fitzgerald, F. C, f.	15	1	m f and o	6
156	Fletcher, Joshua, f.	14	2	m f and o	6
67	Fitzgerald, Alb't E, f.	15	1	m f and oc	6

-j 59	Garrett, Alfred, f.	15	5	m f and o	7
-------	---------------------	----	---	-----------	---

No. on Roll.
 117 Hu
 118 Hu
 128 Ho
 j 130 Ho
 j 173 Ho
 j 127 Ho
 j 112 Kol
 j 12 Lan
 85 Lan
 121 Lan
 94 Lan
 95 Lan
 j Lan
 122 Lan
 j 160 Lan
 ch
 96 Lan
 j 51 Lan
 52 Lan
 86 Lan
 j 29 Mitch
 j 157 Mett
 j 159 Miles
 j 89 Mars
 30 Mitch
 158 Mett
 31 Mayr
 32 Mayr
 12

POLLING SUB-DIVISION No. 12.

61

No. on Roll.	Name and Occupation.	Con.	Lot.	—	P.O.
117	Hudson; Steph, f.	14	11	m f and c	30
118	Hudson, Samuel, f.	14	11	m f and oc	30
128	Howard, Edward, f.	14	4	m f and oc	6
j 130	Hobbs, James W, f.	14	2	m f and o	6
j 173	Hobbs, Wm, f.	13	5	m f and o	30
j 127	Howard, Thos, f.	14	4	m f and o	6
j 112	Kohl, Max, f.	14	12	m f and o	30
j 12	Langford, James, f.	16	12	m f and o	9
85	Langford, Isaac, f.	14, 15	10	m f and o	30
121	Langford, Thos, f.	14	8, 7	m f and o	5
94	Langford, T A, f.	15	5	m f and o	30
95	Langford, Warner, f.	15	5	m f and oc	30
j	Langford, H V, f.	14	5	m f and t	30
122	Langford, T W, f.	14	8	m f and oc	5
j 160	Langford, A G, mer- chant	14	5, 1	m f and o	
96	Langford, Fred V, f.	15	5	m f and oc	30
j 51	Langford, Samuel, f.	14	9	t	} 30
		15	9	m f and o	
52	Langford, Wm, f.	15	9	m f and oc	30
86	Langford, Cecil, f.	15	10	m f and oc	30
j 29	Mitchell, Joseph, f.	16	5	m f and o	7
j 157	Mettens, Wm, f.	14	1	m f and t	6
j 159	Miles, Edward, f.	14	1	m f and t	6
j 89	Marshall, Alfred, f.	15	8	m f and o	30
30	Mitchell, Wm, f.	16	5	m f and oc	7
158	Mettens, Wm jr, f.	14	1	m f and oc	6
31	Maynes, John, f.	16	4	m f and o	7
32	Maynes, Wm, f.	16	4	m f and oc	7

No. on Roll.	Name and Occupation.	Con.	Lot.	—	P.O.
j 20	McKenzie, Samuel, f.	16	8	m f and o	7
j 22	McRoberts, D H, f.	16	7	m f and o	7
23	McRoberts, Robert, f.	16	7	m f and oc	7
25	McRoberts, Uriah, f.	16	6	m f and oc	5
j 60	McRoberts, D C, f.	15	4	m f and o	6
j 56	McRoberts, W E, f.	15	6	m f and o	30
57	McRoberts, W A, f.	15	6	m f and oc	30
61	McRoberts, Herbert, f.	15	4	m f and oc	6
j 142	McAdams, John, f.	14	10	m f and t	30
105	McRoberts, Wm, f.	14	12	m f and o	30
j 116	McRoberts, Alb, f.	14	12	m f and o	30
j 178	McVey, John, f.	13	1	m f and o	6
58	McRoberts, Thos W, f.	15	6	m f and oc	30
24	McRoberts, Geo H, f.	16	7	m f and oc	7
62	McRoberts, Ernest, f.	15	4	m f and oc	6
146	McWilliams, And'w, f.	14	6	m f and t	5
63	McRoberts, Edmund, f.	15	4	m f and oc	6
j 167	Nicholson, Jas W, f.	13	10	oc	} 5
		14	12	m f and o	
j 167	Nicholson, Robt, f.	13	10	m f and o	5
168	Nicholson, Thos, f.	13	9	m f and o	5

No. on Roll.	Name and Occupation.	Con.	Lot.	—	20
j 37	Powell, Len. B, f....	16	2	m f and o	6
j 37	Powers, Henry A, f. {	15	9	m f and t	30
		14	10	m f and o	
j 123	Pattison, Wm, f.....	14	6	m f and o	30
	174 Parkinson, T. E, f....	13	4	m f and o	6
	119 Powers, Osborne A, f.	14	10	m f and oc	30
	175 Parkinson, George, f.	13	4	m f and oc	6
	176 Parkinson, W. J, f....	13	4	m f and oc	6
j 120	Powers, Thos. E, f....	14	9	m f and o	30
	124 Pattison, Alfred, f...	14	6	m f and oc	30
j. 47	Powell, George, f.....	15	12	m f and t	30
j 150	Rigney, John E, f....	14	4	m f and t	6
j 176	Rigney, Wm, f.....	13	3	m f and o	6
	65 Reith, Ezra, f.....	15	2,3	m f and oc	6
j 141	Rowell, George, f.....	14	11	m f and o	5
	154 Rigney, Wm, jr, f....	14	3	m f and oc	6
j 176	Rigney, Henry T, f....	13	3	m f and o	6
	154 Rigney, Richard, f....	14	3	m f and oc	6
	65 Reith, Alex, f.....	15	3	m f and oc	6
	133 Smibert, Jas. H, f....	14	1	m f and oc	6
	132 Smibert, Wm. W, f....	14	1	m f and oc	6
	79 Scott, James, f.....	15	12	m f and o	30
	80 Scott, G. W, f.....	15	12	m f and oc	30
	143 Sinclair, John, f....	14	8	m f and o	5
	144 Sinclair, Jefferson, f.	14	8	m f and oc	5
100-	82 Scott, E. C, f.....	15	12	m f and oc	30
	131 Smibert, Geo, f.....	14	1	m f and o	6
	83 Scott, Arthur D, f....	15	12	m f and oc	30
j 49	Sceli, Wm, f.....	15	10	m f and o	30
	81 Scott, Albert E, f....	15	12	m f and oc	30
j 26	Taylor, Isaac, f.....	16	5,6	m f and o	7
	114 Tedford, Ezra, f....	14	12	m f and t	30

No. on Roll.	Name and Occupation.	Con.	Lot.	—	20
	13 Walden, Benj, f.....	15,16	11	m f and o	9
j 48	Walden, George, f....	15	11	m f and o	30
j 17	Walden, Montg, f....	16	10	m f and o	30
j 35	White, George, f....	16	1,2,3	m f & o & t	29
j 15	Walden, Richard, f....	16	10	m f and o	30
j 84	Weir, Robert, f.....	15	11	m f and o	30
j 50	Weir, James, f.....	15	9	m f and o	30
j 104	White, Richard, f....	15	2	m f and o	6
	160 Westman, Alex, f....	14	1	m f and oc	6
j 139	Walls, John, f.....	14	12	m f and o	5
	16 Walden, Fred, f.....	16	10	m f and oc	30
	14 Walden, Chas. B, f....	16	11	m f and oc	9
	18 Walden, W. A, f.....	16	10	m f and oc	30
	113 Wilson, John, f....	14	12	m f and t	30
	169 Waddell, James, f....	13	9	m f and t	5
	170 Waddell, John, f....	13	9	m f and oc	5
	171 Wright, Robert, f....	13	8	m f and oc	5

123

PART 2—Persons entitled to vote at Municipal Elections only:

89	Brumwell, Robert, f....	15	8		o
54	Blatchford, Mrs.....	15	7		o 5
92	Braithwaite, W. J, motorman.....	15	6		o 1
142	Coultis, David, f.....	14	9		o
142	Coultis, Alfred, f.....	14	9		o
166	Coultis, William, f....	13	11		o
176	Coleman, George, f....	13	2		o 5

POLLING SUB-DIVISION NO. 12.

63

No. on Roll.	Name and Occupation.	Con. Lot.	—	P.O.
122	Dann, John, f....	14 7	o	
105	Fitzgerald, Fred, f....	15 1	o	6
19	Garrett, Alex, f.....	16 9	o	30
35	McRoberts, D C, f.....	16 3	o	6
91	McRoberts, Chas, f.....	15 7	o	7
166	McRoberts, Robt, f.....	13 11	t	5
34	McLaughlin, A C, f.....	16 3	t	
171	Needham, Isaac.....	13 6	o	
145	Parkinson, Mrs.....	14 7	o	
146	Parkinson, Mrs.....	14 6	o	
65	Powell, L B, f.....	15 2	o	

No. on Roll.	Name and Occupation.	Con. Lot.	—	P.O.
93	Rigney, Wm, f.....	15 6	o	6
150	Rigney, Samuel G, f.....	14 4	o	
90	Rowell, John jr, f.....	15 7	o	7
151	Rigney, Wm, f.....	14 3	o	6
156	Rigney, Wm, f.....	14 2	t	6
152	Rigney, H T, f.....	14 3	oo	6
64	Relth, Mrs W.....	15 2,3	o	
118	Rowell, Chris, f.....	14 10	t	30
113	Scott, J L, f.....	14 12	o	
157	Smibert, George, f.....	14 1	o	
83	Sinclair, John, f.....	15 11	o	
87	Thompson, Wm, f.....	15 9	o	
171	Wright, Mrs R.....	13 8	o	5
36	White, Thomas, f.....	16 2	o	20
38	White, Samuel W, f.....	16 1	o	20
27	Westman, Hy, f.....	16 5	o	
103	White, Samuel, f.....	15 2	o	
28	Westman, Douglas, f.....	16 5	t	7

PART 3—Persons entitled to vote at Elections to the Legislative Assembly only :

NONE.

POLLING SUB-DIVISION No. 13

Is bounded on the north by the 10th Concession line, on the east by the line between Lots 13 and 14, on the south by the north branch of the River Thames and River Medway, and on the west by the line between Lots numbers 19 and 20. Polling Place—Town Hall, Lot 16, Con 6, north half.

PART 1—Persons entitled to vote at both Municipal Elections and Elections to the Legislative Assembly.

No. on Roll.	Name and Occupation.	Con.	Lot.	—	P.O.
518	Allen, George, wagon maker.....	7	16	m f and o	11
1158	Anderson, Wm, f....	8	17	m f and o	11
1159	Anderson, James, f....	8	17	m f and oc	11
1160	Anderson, John, f....	8	17	m f and oc	11
1161	Anderson, Dunc, f....	8	17	m f and oc	11
1162	Anderson, Wm jr, f.	8	17	m f and oc	11
1167	Anderson, John, f....	8, 18, 19		m f and o	11
1186	Anderson, Dunc, f.	$\left. \begin{matrix} 7 & 18 \\ 8 & 17, 18 \end{matrix} \right\}$		m f and o	11
1165	Anderson, Arthur, f.	8	17	m f and oc	11
j 1190	Ardiel, Wm H, f....	8	19	m f and o	11
1163	Anderson, Alex, f....	8	17	m f and oc	11
1187	Anderson, John, f....	8, 17, 18		m f and oc	11
1188	Anderson, Thos, f....	8, 17, 18		m f and oc	11
1164	Anderson, David, f.	8	17	m f and oc	11
487	Allway, Robt, f....	7	15	m f and oc	11
j 515	Ashbury, J F, f....	7, 16, 17		m f and t	11
1166	Anderson, Edgar, f.	8	17	m f and oc	11
1189	Anderson, Ernest, f.	8, 17, 18		m f and oc	11
686	Burwell, Edward, f.	4, 15, 16		m f and o	1
687	Burwell, Arthur, insurance agent.....	4, 15, 16		m f and oc	1
1472	Barter, Robert, f....	3, 17, 18		m f and o	1
1473	Barter, Adolph, f....	3, 17, 18		m f and o	1
1242	Barrel, Edward, hotel keeper.....	7	17	m f and t	11
1394	Cary, Wm H jr, f....	4	19	m f and oc	12
397	Carmichael, R M, f....	9, 14		m f and oc	11
j 373	Corsant, Stephen, f.	9	15	m f and o	11
j 375	Carmichael, Jas, f....	9	14	m f and o	11
396	Carmichael, Dunc, f.	9	14	m f and o	11
j 416	Carmichael, Jas, f....	8	16	m f and o	11
j 417	Carmichael, John, f.	8	16	m f and o	11
j 647	Crump, Rich'd H, f.	4	14	m f and o	1
514	Cumming, Alfred, merchant.....	7	16	m f and o	11
j 1393	Cary, Wm H, f....	4	19	m f and o	12
j 1474	Cole, Lemuel, f....	3	18	m f and o	1
1277	Crawley, W H, laborer.	6	17	m f and oc	11
641	Cushman, W, laborer.	4	16	m f and t	12
j 643	Corsant, Arth, laborer	4	16	m f and t	12
1395	Cary, G A, f....	4	19	m f and oc	12
j 393	Decker, Alonzo, f....	9	16	m f and o	11
j 1362	Duguid, Peter, f....	5	19	m f and o	12
j 394	Decker, Clayton, f....	9	16	m f and o	11
395	Decker, Warren, f....	9	16	m f and oc	11
j 465	Donaldson, James, laborer.....	7	16	m f and t	11
529	Drum, P, laborer.....	6	15	m f and oc	11
j 552	Egan, Thos, f....	6	16	m f and t	11

POLLING SUB-DIVISION NO. 13.

85

No. on Roll.	Name and Occupation.	Con. Lot.	—	O R
j 1274	Fraleigh, Geo, f...	{ 8 17 5 16 }	m f and o	11
j 594	Farncomb, Hy, f....	5 15,16	m f and o	1
j 599	Flanigan, George H, butcher.....	5 15	m f and o	12
j 1135	Fish, Norman, f. {	{ 7 16 9 17 }	m f and o	11
j 1208	Flood, Patrick, f....	7 17,16	m f and o	11
j 1271	Fraleigh, Thomas, f..	6 17,18	m f and o	11
j 1248	Fraleigh, W. H, f....	7 18	m f and o	11
	1275 Fraleigh, Oscar, f....	6 17	m f and oc	11
j 1335	Foster, John, f.....	5 17	m f and t	1'
	1276 Fraleigh, Sidney, f..	6 17	m f and oc	1
j 1337	Fraleigh, Edgar, f....	5 17	m f and t	11
	1272 Fraleigh, Thos. I, f..	6 17,18	m f and oc	11
	520 Fair, Rev. Hugh....	7 16	m f and oc	11
	1240 Fraleigh, A. E, M.D.	7 17	m f and t	11

j 646	Gillson, John, f.....	4 15	m f and o	1
	1279 Gibson, William, f..	6 17	m f and o	11
	1420 Graham, Wm. S, f...4	18	m f and oc	1
j 1334	Gardiner, Andrew, f..5	17	m f and t	11

	481 Hawkins, Jac, miller.	7 18	m f and o	11
j 485	Hodgins, Jas. H, f..7	15	m f and o	11
	374 Humphrey, Thomas, laborer.....	9 15	m f and oc	11
	687 Hyslop, Thos, laborer.	4 15,16	m f and oc	

12

No. on Roll.	Name and Occupation	Con. Lot.	—	O R
j 523	Hetherington, J, laborer.....	6 16	m f and t	11
	634 Hewing, John, fish dealer.....	4 16	m f and t	12
	640 Howard, Jas, gentle- man.....	4 16	m f and oc	12
	1208 Hatch, Fred, f.....	6 18	m f and oc	12
j 1417	Hale, Wm. J, f....4	17	m f and o	12
j 1418	Hayes, John, f.....4	17	m f & o & t	12
	486 Hodgins, R. B, f....7	15	m f and oc	11
	482 Hawkins, Ed. E, miller	7 16	m f and oc	11
j 686	Henry, Thomas, f...4	15,16	m f and t	12
	684 Henry, John, f....4	16	m f and oc	12
	685 Henry, Robert, f.....	4 16	m f and oc	12
	483 Hawkins, Fred A, miller.....	7 16	m f and oc	11
	640 Hodgins, A. E, f....4	16	m f and t	12

j 712 Irwin, Wm, f.....3 14,15 m f and t 12

j 1280 Jackson, Homer, f...6 18 m f and o 11
1415 Johnson, Wm, f....4 17,18 m f and oc 12
635 Jenkins, John, f....4 16 m f and oc 12

j 1361 Knapton, Thos, f....5 18,19 m f and o 12
j 1392 Knapton, Jonath, f..4 18 m f and o 12

516 Lawrence, Benjamin,
gentleman.....7 16 m f and o 11

484 Martin, Wm, f....7 16 m f and oc 11

530 Morden, Jas. H, f..6 14 m f and oc 11

8

No. on Roll.	Name and Occupation.	Con.	Lot.	—	P.O.
j 645	Munro, James, f....	4	15	m f and o	12
j 682	Marshall, Jos H, f....	4	16	m f and o	1
1240	Morden, John P, re- tired clergyman....	7	17,22	m f and o	11
j 1391	Morkin, Thomas, f	4	17	m f and t	12
1274	Morden, Edgar N, f.	6	17	m f and oc	11
1422	McEwen, Alex, f....	4	19	m f and oc	12
j 418	McFarlane, Jas, f....	8	15	m f and o	11
245	McNab, John, black- smith.....	7	16,17	m f and o	11
1358	McComb, Thos, f....	5	17	m f and o	12
1359	McComb, Thos jr, f..	5	17	m f and oc	12
517	McNab, Edward, blacksmith.....	7	16	m f and o	11
j 1421	McEwen, Wm, f....	4	19	m f and t	12
419	McFarlane, Geo, f....	8	14	m f and oc	11
680	McDougall, Joseph, butcher.....	4	16	m f and oc	12
513	McNeill, G D, M D..	7	16	m f and o	11
420	McFarlane, Jas, f....	8	14	m f and oc	11
681	McDougall, Wm S, butcher.....	4	16	m f and oc	12
596	McRoberts, W H, f..	5	16	m f and oc	12
1423	McEwen, Oswald, f..	4	19	m f and oc	12
j 1168	Needham, Albert, f..	8	19	m f and oc	11
601	Newcombe, Simon, butcher.....	5	15	m f and oc	12
528	Nelson, John, f.....	6	15	m f and oc	11
1247	Nixon, James, f.....	7	18	m f and oc	11

No. on Roll.	Name and Occupation.	Con.	Lot.	—	P.O.
j 708	Oke, Charles, f.....	3	10	m f and o	1
709	Oke, Wm.....	3	10	m f and oc	1
710	Oke, Richard.....	3	16	m f and oc	1
j 691	O'Hagan, Chas, f....	4	14	m f and t	1
692	O'Hagan, Patrick, f..	4	14	m f and oc	12
693	O'Hagan, Dominick, f.	4	14	m f and oc	12
694	O'Hagan, Hugh, f....	4	14	m f and oc	12
j 689	Priddis, James, f....	4	16	m f and o	1
j 688	Priddis, Geo, f.....	4	16	m f and o	1
j 554	Powell, Leonard, f..	6	14	m f and o	11
j 1119	Prudham, James, f..	9	19	m f and t	11
j 1281	Peters, James, f....	6	19	m f and o	11
1282	Peters, Edwin, f....	6	19	m f and oc	11
j 1137	Patterson, Jos H, f..	9	19	m f and o	16
j 1136	Post, Arthur, f.....	9	18	m f and t	11
644	Quait, John, f.....	4	15	m f and o	12
1243	Rowland, Thos, f....	7	17	m f and oc	11
j 488	Sifton, Alfred T, f..	6,7	14	m f and o	11
j 637	Swarts, Crowell, hotel keeper.....	4	16	m f and o	12
j 690	Scandrett, Isaac, f..	4	15	m f and o	12
1209	Shobbrook, Rich'd, f.	7	18	m f and o	11
j 1250	Sifton, Jabez F, f....	7	19	m f and o	11
1238	Sifton, Wm, f.....	7	17,18	m f and oc	11
j 1239	Swarts, James, f....	7	17	m f and o	11
1333	Sifton, Chas W, f....	5	17	m f and o	12
j 711	Sloman, John, f.....	3	16	m f and t	11
524	Sheehottom, T.A, mer- chant.....	6	16	m f and oc	11

No. on Roll.	Name and Occupation.	Con.	Lot.	—	P.O.
j 1416	Shepherd, John, f.	4	17	m f and o	12
1244	Smith, Charles E, carpenter.....	7	17	m f and o	11
j 577	Sinker, John, f.....	5	16	m f and o	12
j 1249	Sifton, Joseph H, f	{ 6 19, 20		o }	11
		7	19	m f and oc	
707	Short, Thos, f....	3	16	m f and oc	
1116	Thomas, Joseph, f....	9	17	m f and oc	11
438	Talbot, T. H, f....	{ 7 14, 15		m f & o }	11
		7, 8	16		
602	Thorn, Wm, f....	5	14	m f and o	12
638	Tancock, Jas, black-smith.....	4	16	m f and o	12
639	Tancock, Jas. A, V.S.	4	16	m f and oc	12
695	Teasdale, George, f.	4	14	m f and o	1
1115	Tier, James, f.....	9	17	m f and o	11
1336	Turner, Wm, f.....	5	17	m f and o	12
j 1414	Tackaberry, R, f.	4	17, 18	m f and o	12
439	Talbot, Edw. M, f.	7, 8	16	m f and oc	11
440	Talbot, Wm. Jno, f.	7, 8	16	m f and oc	11
441	Talbot, T. H, jr, f.	7, 8	16	m f and oc	11
442	Talbot, Benj, f.....	7, 8	16	m f and oc	11
j 1360	Turner, Harry, f....	5	18	m f and t	12
443	Talbot, Freeman, f.	7, 8	16	m f and oc	11
444	Talbot, Charles, f.	7, 8	16	m f and oc	11
j 1338	Thorburn, Walter, f.	5	18	m f and t	11
j 522	Westlake, Walter, f.	6	16	m f and o	11
578	Webb, Herbert J, f.	5	15	m f and oc	12
579	Webb, Edgar Hy, f.	5	15	m f and oc	12

No. on Roll.	Name and Occupation.	Con.	Lot.	—	P.O.
j 553	Webb, John, f....	6, 5	15	m f and o	12
1273	Walker, Robert, f....	6	17, 18	m f and oc	11
j 1118	Wilkins, Leonard, f.	9	18	m f and t	11
j 1390	Young, Hugh, f....	4	17, 18	m f and o	12

168
6
174

PART 2—Persons entitled to vote at Municipal Elections only:

513	Brooks, Ann.....	6, 7	16		o
513	Brooks, Margaret....	6, 7	16		o
1418	Breen, Mrs....	4	17		o
691	Bradshaw, Mrs.....	4	14		o
1357	Balkwill, John, f....	5	17		o
513	Brooks, Henry.....	6, 7	16		o
513	Brooks, F. L.....	6, 7	16		o
521	Collins, Edward, f....	6	16		o 11
1337	Chapman, Ephr'm, f.	5	18		o
1277	Crawley, Mrs.....	6	17		o
1419	Clarke, W. W.	4	18		o
1241	Carrothers, Robert, alderman	7	17		o
1421	Dewar, Mrs.....	4	19		o 1
600	Downing, Frank, f....	5	15		o
1118	Dignan, John C.....	9	18		o

POLLING SUB-DIVISION No. 13.

No. on Roll.	Name and Occupation.	Con.	Lot.	—	O. E.	No. on Roll.	Name and Occupation.	Con.	Lot.	—	P. O.
1278	Elliott, Mrs.	6	17	o	11	419	McFarlane, Mrs R	8	14	o	11
595	Farncomb, Fred, engineer	5	16	o	1	438	McFarlane, Mrs R	8	16	o	11
527	Farrell, Mrs.	6	15	o	11	632	McMartin, Mrs.	4	16	o	12
1420	Graham, W, gentleman.	4	18	o	1	631	McMartin, Jas, hotel keeper	4	16	o	1
640	Howard, Abigail	4	16	o		632	McMartin, John, hotel keeper	4	16	o	1
812	Hellmuth, I, lawyer	3	14,15	o		633	McMartin, Duncan, post office official	4	16	o	
1360	Hooper, Wm.	5	18	o		681	McDougall, Mrs	4	16	o	12
1391	Hooper, Mrs.	4	17	o		1246	Nixon, Mrs Eunice	7	18	o	11
553	Harris, Stewart, huckster	6	15	o	1	1135	Needham, Albert, f	9	18	o	11
707	Houseman, John, gentleman	3	16	o	1	519	Orr, John, hotel keeper	7	16	o	
597	Heighway, Mrs T	5	16	o	12	1475	Perrin, D S, confectionr.	3	18,19	o	1
1307	Hatch, Mrs J G	6	18	o	12	640	Robins, John, f.	4	16	o	
636	Jackson, Mrs.	4	16	o	12	1237	Sifton, Mrs	7	17,18	o	11
1418	Jeffreys, Arthur	4	17	o		1209	Stoneman, John, f.	7	19	o	
1240	Morden, John P	7	17	o		513	Stanley, WD, tp clerk.	6,7	16	o	
1307	Morden, Mrs D	6	17	o	11	713	Williams, N S	3	13,14	o	1
438	Mitcheltree, Joseph, butcher	8	16	o	1	515	Wyatt, WH, b'ksmith.	7	16,17	o	
642	Marsh, James, laborer.	4	16	o		551	Walker, Geo L, f.	6	16	o	
438	Morrow, John, f.	8	16	t	11	<p>PART 3—Persons entitled to vote at Elections to the Legislative Assembly only :</p> <p>597 Heighway, A.....5 16 m f 12</p> <p>598 Heighway, E W.....5 16 m f 12</p> <p>598 Heighway, Gavin.....5 16 m f 12</p> <p>Heighway, Maud 10.15 m f</p> <p>1117 Oliver, Walter, tollgate keeper.....9 17 m f</p> <p>1389 Wyatt, Mr.....4 17 m f</p>					

POLLING SUB-DIVISION No. 14

Is bounded on the north by Biddulph, on the east by the sideroad between Lots 12 and 13, on the south by the 10th Concession line, and on the west by the line between Lots 19 and 20 in the 10th and south half 11th Concessions; in north half Concession 11, south half Concession 12, north half Concession 13, and Concessions 14, 15 and 16 by the side road between Lots 20 and 21, and in the north half of Concession 12 and south half Concession 13 by the line between Lots 21 and 22. Polling Place—Birr.

PART 1—Persons entitled to vote at both Municipal Elections and Elections to the Legislative Assembly:

No. on Roll.	Name and Occupation.	Con.	Lot.	—	P.O.
j 179	Armstrong, Thos, f.	13	16	m f and o	10
	181 Armstrong, John, f.	13	15, 16	m f and o	10
	162 Armstrong, James, f.	13	15, 16	m f and o	10
j 9	Bunn, Joseph, f.	16	13	m f and o	9
	135 Brumwell, Jacob, f.	13 15, 16	14	16 m f and o	10
	261 Bowes, Fred Geo, f.	11	14	m f and o	10
	969 Blackall, Walter, f.	11	20	m f and o	10
j 260	Bowes, Joseph, f.	11 14	12	14 m f and o	10
	3 Benn, Wm, f.	16	16	m f and o	9
j 208	Burr, Alex, hotel kpr.	12	16	m f and t	10
j 963	Boulton, C H, f.	11	17, 18	m f and o	10
	964 Boulton, Geo C, f.	11	17, 18	m f and o	10
j 357	Bere, Benjamin, f.	10	13	m f and t	11
j 1	Creighton, Thos, f.	16	16	m f and o	9
	68 Crunnican, Michael, f.	15	16, 17	m f and o	9

No. on Roll.	Name and Occupation.	Con.	Lot.	—	P.O.
69	Crunnican, John, f.	15	16	m f and o	9
j 206	Coleman, Wm, f.	12	16	m f and o	10
262	Corsaant, John, f.	11	13, 14	m f and o	5
j 232	Corsaant, John jr, f.	12	13	m f and o	5
263	Corsaant, Henry, f.	11	13, 14	m f and o	5
j 928	Cohon, G A, f.	12 18	13 17	m f and o	10
70	Crunnican, Chas, f.	15	16	m f and o	9
j 207	Campbell, John F, merchant.	12	16	m f and o	10
71	Crunnican, A Jas, f.	15	16	m f and o	9
210	Dann, George, f.	12	13	m f and o	10
j 209	Elliott, Lewis, f.	12	14	m f and o	10
j 321	Elliott, Archibald, f.	11	14	m f and o	10
835	Edwards, Thomas, f.	14	18	m f and o	10

No. on Roll.	Name and Occupation.	Con.	Lot.	—	O C	No. on Roll.	Name and Occupation.	Con.	Lot.	—	P. O.
j 39	Flood, Daniel, f.	15	16	m f and o	9	942	Hughes, Philo, f.	12	17	m f and o	10
228	Fraser, John, f.	12	15, 14	m f and o	10	j 995	Hughes, J. C. P, f.	11	18	m f and o	24
229	Fraser, William, f.	12	15	m f and oc	10	j 179	Henderson, Jas, f.	13	15	m f and o	10
230	Fraser, John, jr, f.	12	15	m f and oc	10	354	Hodgins, Albert E, f.	10	16	m f and oc	11
832	Ferguson, Jos. W, f.	14	17, 18	m f and o	10	j 894	Harding, Chas. E, f.	13	17	m f and o	10
833	Ferguson, Pearce, f.	14	17	m f and oc	10						
j 834	Ferguson, Angus, f.	14	18	m f and o	10						
j 1093	Flood, Dennis, f.	10	18, 19	m f and o	11	j 136	Jones, Wm, f.	14	14, 15	m f and t	10
40	Flood, W. John, f.	15	16	m f and oc	9						
225	Ferguson, A. G, f.	12	16	m f and o	10	943	Kennedy, H. B, f.	12	20, 21	m f and o	10
231	Fraser, Charles, f.	12	15	m f and oc	10	944	Kennedy, H, jr, f.	12	20, 21	m f and oc	10
41	Flood, Daniel, jr, f.	15	16	m f and oc	9	j 930	Keatle, Albert E, f.	12	21	m f and t	10
						945	Kennedy, Geo. W, f.	12	20, 21	m f and oc	10
						2	Kohn, Martin.	16	16	m f and oc	9
757	Guest, Walter, f.	15	17	m f and oc	9						
255	Goulding, Chas, f.	11	16	m f and o	10	j 320	Lang, Charles, f.	11	14, 15	m f and o	10
j 756	Guest, John, f.	15	17, 19	m f and o	9	920	Lambourn, Job, f.	12	17	m f and o	10
j 895	Gilbank, Wm. T, f.	13	17	m f and o	10	921	Lambourn, Rich'd, f.	12	17	m f and oc	10
256	Goulding, Ed. T, f.	11	16	m f and oc	10	923	Linden, Sam, laborer.	12	17	m f and o	10
257	Goulding, Wm, f.	11	16	m f and oc	10	922	Lambourn, John, laborer	12	17	m f and oc	10
893	Garbutt, Rev. J. R.	13	17	m f and oc	10	338	Little, Rev. James.	10	16	m f and oc	10
						919	Lambourn, Leonard, laborer	12	17	m f and t	10
						203	Lumsden, Samuel, laborer	12	16	m f and o	10
						924	Linden, Ab'm, laborer.	12	17	m f and oc	10
						925	Linden, Jos, laborer.	12	17	m f and oc	10
						j 11	Lyons, John, f.	16	13	m f and t	9
						76	Marshall, Joseph, f.	15	13	m f and o	30
j 896	Hobbs, R. M, f.	13, 17, 18, 14, 17, 12, 16, 17		m f and o	10	j 106	Marshall, Wm. J, f.	14	16	m f and o	10
						107	Marshall, Matt, f.	14	16	m f and oc	10
j 353	Hodgins, John, f.	10, 17, 10, 16		m f and t m f and o	11	j 108	Maxwell, Thos. A, f.	14	15	m f and o	10
						4	Murray, Robert, f.	16	15	m f and t	9
j 852	Hodgins, Wm. C, f.	14	20	m f and o	39	5	Murray, Joseph, f.	16	15	m f and oc	9
874	Hodgins, Wm, f.	13	20	m f and o	39	77	Marshall, Jos, jr, f.	15	13	m f and oc	30
j 929	Haskett, Jas. S, f.	12	20	m f and o	10						
j 899	Haskett, John W, f.	13	20	m f and o	10						

No. on Roll.	Name and Occupation.	Con.	Lot.	—	O. R.
226	Maxwell, Thomas, f.	12	16	m f and o	10
927	Morrison, George, f.	12	17	m f and t	10
j 993	Morgan, Richard, f.	11	17	m f and o	10
	7 Middleton, J W, f.	16	14	m f and oc	9
j 227	Maxwell, John G, f.	12	16	m f and o	10
994	Morgan, Edward T, f.	11	17	m f and oc	10

j 1029	McNaughton, Pet, f.	10	17	m f and o	11
164	McNair, Andrew, f.	13	13	m f and oc	10
758	McComb, George, f.	15	18	m f and o	9
900	McDonald, Jas, f.	13	21	m f and o	10
j 898	McDonald, Arch, f.	13	19	m f and t	10
j 721	McIlhargey, Zach, f.	16	18	m f and o	9
j 722	McIlhargey, John, f.	16	19	m f and o	9
163	McNair, David, f.	13	14	m f and oc	10
901	McDonald, Jas D, f.	13	21	m f and oc	10
1030	McNaughton, Alex, f.	10	17	m f and oc	11

Ed McNaughton Malcolm 10.15.18 79

j 810	O'Neil, Alfred, f.	14	19	m f and oc	10
		15	18	m f and o	
j 811	O'Neil, Artemas, f.	15	19	m f and o	10
j 109	O'Neil, Arthur, f.	14	14	m f and o	10

965	Patrick, Wm, f.	11	19	m f and o	10
		12	19	m f and o	
j 720	Phinn, George E, tile maker.	16	17	m f and o	9

No on Roll.	Name and Occupation.	Con.	Lot.	—	O. R.
j 8	Ryan, Nathaniel, f.	16	14	m f and o	9
j 78	Rowell, Chris, f.	15	13	m f and o	39
335	Robsen, James, f.	11	13	m f & o	10
		10	13,16		
336	Robson, Robt R, f.	10	16	m f and oc	10
966	Ryland, Geo F, f.	12	19	m f and o	10
		11	20		
967	Ryland, John, f.	11	20	m f and oc	10
337	Robson, James L, f.	10	16	m f and oc	10
968	Ryland, Charles, f.	11	20	m f and oc	10

43	Stewart, Wm, f.	16	13	m f and o	9
		15	14		
44	Stewart, Geo A, f.	15	14	m f and oc	9
j 110	Scott, Francis J, f.	14	13	m f and o	10
j 259	Stephens, Wm, f.	11	15	m f and o	10
849	Shoebottom, T C, f.	14	19	m f and o	39
j 812	Shoebottom, J D, f.	15	20	m f and o	39
j 851	Shoebottom, Jos, f.	14	20	m f and o	39
45	Stewart, Thos G, f.	15	14	m f and oc	9
850	Shoebottom, Thos H, f.	14	19	m f and oc	39
j 42	Stanley, N J, f.	15	15	m f and o	9

759	Thompson, John, f.	15	20	m f and o	9
j 873	T. Johr, f.	13	19	m f and o	10
760	Thompson, Thos, f.	15	20	m f and oc	9
j 717	Thompson, Chas, f.	16	17	m f and t	9
j 718	Thompson, Wm, f.	16	17	m f and t	9

No. on Roll	Name and Occupation.	Con. Lot.	—	O	P.O.
j 46	Walden, F. H, f	15 13	m f and o	9	
<i>FDU</i> j 10	Walden, Alf. E, f	15,16 13	m f and o	9	
j 72	Weir, Samuel, f	15 15	m f and o	10	
j 75	Wilkin, Alex, f	15 14	m f and o	10	
j 74	Wilkin, John, f	15 14	m f and o	10	
j 180	White, Richard, f	13 14	m f and o	10	
j 848	Wilson, Alfred, f	14 18	m f and o	10	
	897 Wilson, Rev. Robt. . . .	13 17,18	m f and oc	10	
j 137	Williams, Andrew, f	14 13,14	m f and t	10	
	926 Wright, H; f	12 17	m f and t	10	
	138 Williams, Andw, jr,	14 13,14	m f and oc		
<i>OK</i> j 723	Wilson, Robert <i>Richard</i>	16 20	m f and o	9	
j 724	Wilson, James	16 20	m f and o	9	

PART 2—Persons entitled to vote at Municipal Elections only.

134	Brumwell, Robt, f	{ 13 15,16 } 14 16 }	o	10
11	Boyne, Geo, f	16 13	o	6
204	Brown, Mrs.	12 16	o	10
898	Brownlee, Agnes	13 19	o	
898	Brownlee, Ellen	13 19	o	
719	Brabazon, Robert, f	16 17	o	9
205	Brown, Alex	12 16	oc	10
4	Cole, Mrs.	16 15	o	
356	Donaldson, Wm, f	10 13	o	1
3	Donnelly, James, f	16 15	o	
210	Dann, David, f	12 13	o	10
264	Ferguson, Mrs. E	11 13	o	5

No. on Roll	Name and Occupation.	Con. Lot.	—	O	P.O.
320	Goulding, Chas, f	11 16	o	10	
872	Hodgins, John R, f	13 18	t	39	
930	Hodgins, John S, f	12 21	o		
197	Hobbs, R. M, f	{ 12 16 } 14 17 }	o	10	
872	Logan, John, f	13 18	o		
6	Middleton, Mrs.	16 14	o	9	
163	McNair, Mrs.	13 13,14	o	10	
<i>OK</i> 339	McNaughton, Mc f	10 15	o		
872	McMahon, Mrs.	13,14 17	o		
1004	McNaughton, Jas, f	10 17	o		
717	McLean, P	16 17	o		
810	O'Neil, James, f	{ 14 19 } 15 18 }	o	27	
109	O'Neil, Malcolm	14 14	o		
810	Patrick, Joseph, f	15 19	o	24	
208	Rowell, Arthur, police- man	12 16	o	1	

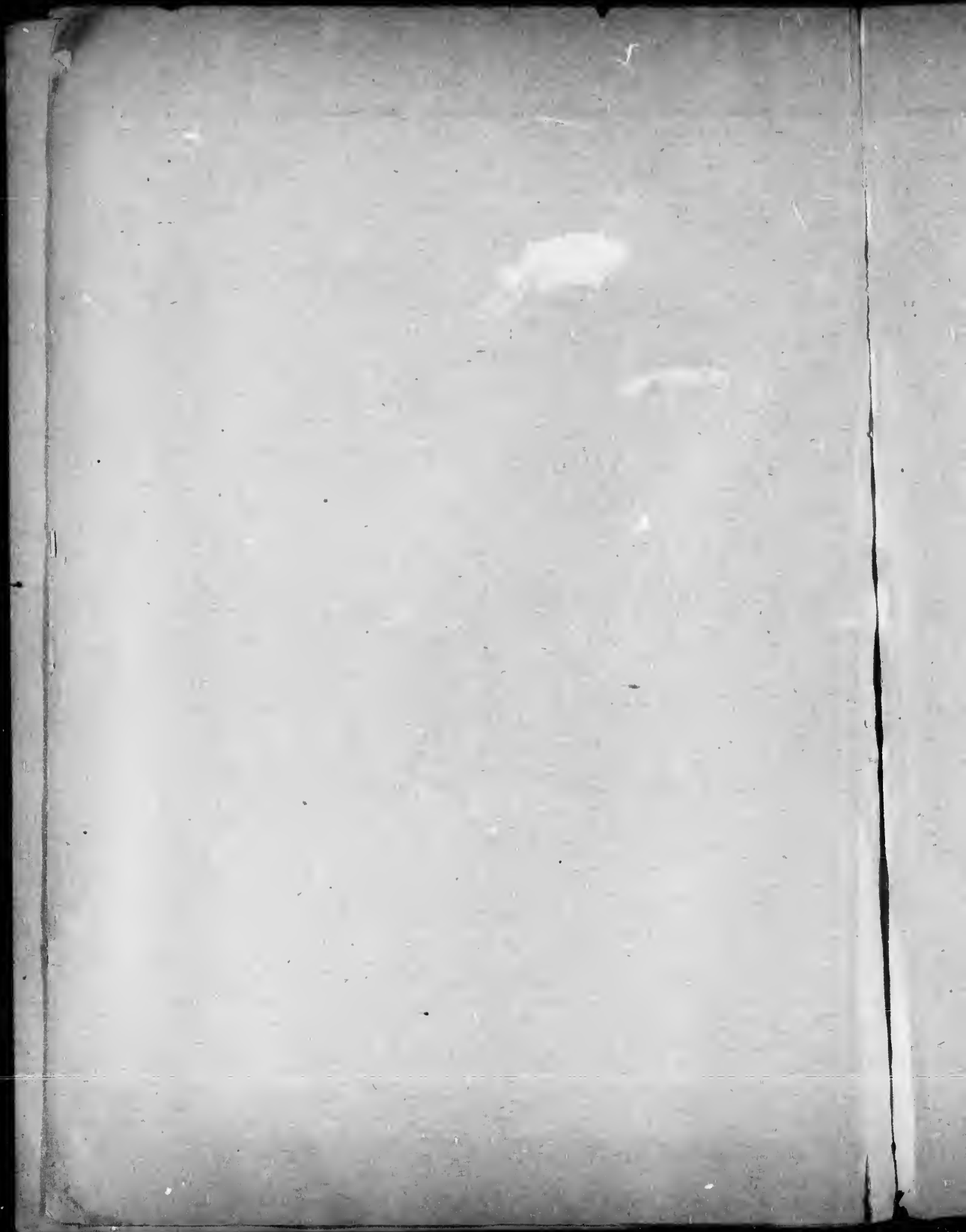
No. on Roll.	Name and Occupation.	Con.	Lot.	P.O.
111	Scott, Joseph L, f	14	13	10
258	Stephens, Chas, f	11	15	1
181	Sinclair, Mrs. Jas	{ 13 12 }	{ 13 15 }	10
3	Tennent, John, f	16	16	10
136	Willis, Mrs	14	14,15	
73	Weir, Mrs. John	15	15	

PART 3—Persons entitled to vote at Elections to the Legislative Assembly only:

No. on Roll.	Name and Occupation.	Con.	Lot.	P.O.
755	Trotter, Robert, toll-gate keeper	10	15	9

Handwritten notes: *10 15*, *11-7*, *EL*

P.O.
o 10
t 39
o
o 10
o
o 9
o 10
o
o
o
o 27
o
o 24
o 1



I, James Grant, clerk of the Municipality of the Township of London, in the County of Middlesex, do hereby certify that parts one and three of the foregoing list constitute a correct list for the year 1897 of all persons appearing by the last Revised Assessment Roll of the said Municipality to be entitled to vote at Elections for Members of the Legislative Assembly; and that parts one and two constitute a correct list for said year of all persons appearing by the said Roll to be entitled to vote at Municipal Elections in said Municipality; and I hereby call upon all electors to examine the said list, and if any omissions or other errors are perceived therein, to take immediate proceedings to have the said errors corrected according to law.

JAMES GRANT,

Clerk of the Municipality of the Township of London.

Dated this 9th day of August, 1897.

Number of Jurors—(896) Eight hundred and ninety-six.

