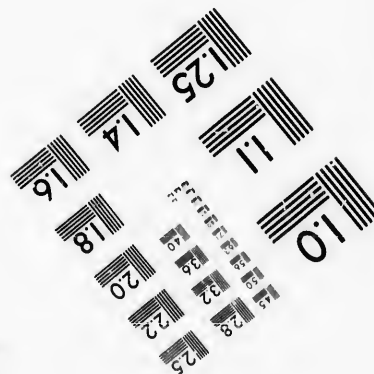
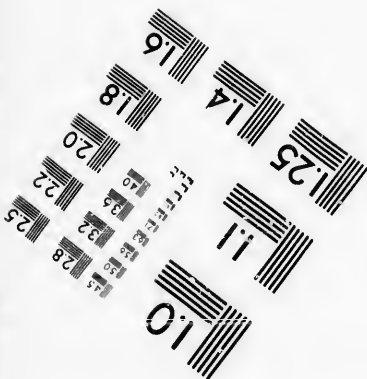
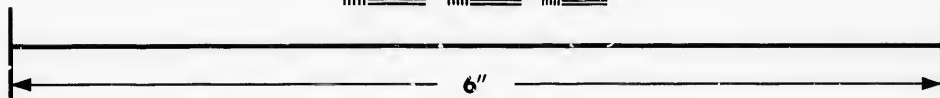
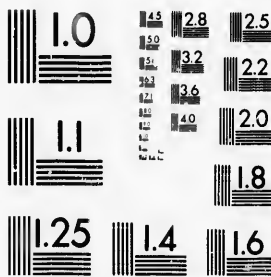


**IMAGE EVALUATION
TEST TARGET (MT-3)**



**Photographic
Sciences
Corporation**

23 WEST MAIN STREET
WEBSTER, N.Y. 14580
(716) 872-4503



**CIHM/ICMH
Microfiche
Series.**

**CIHM/ICMH
Collection de
microfiches.**



Canadian Institute for Historical Microreproductions / Institut canadien de microreproductions historiques



© 1986

Technical and Bibliographic Notes/Notes techniques et bibliographiques

The Institute has attempted to obtain the best original copy available for filming. Features of this copy which may be bibliographically unique, which may alter any of the images in the reproduction, or which may significantly change the usual method of filming, are checked below.

L'Institut a microfilmé le meilleur exemplaire qu'il lui a été possible de se procurer. Les détails de cet exemplaire qui sont peut-être uniques du point de vue bibliographique, qui peuvent modifier une image reproduite, ou qui peuvent exiger une modification dans la méthode normale de filmage sont indiqués ci-dessous.

- | | |
|--|--|
| <input type="checkbox"/> Coloured covers/
Couverture de couleur | <input type="checkbox"/> Coloured pages/
Pages de couleur |
| <input type="checkbox"/> Covers damaged/
Couverture endommagée | <input type="checkbox"/> Pages damaged/
Pages endommagées |
| <input type="checkbox"/> Covers restored and/or laminated/
Couverture restaurée et/ou pelliculée | <input type="checkbox"/> Pages restored and/or laminated/
Pages restaurées et/ou pelliculées |
| <input type="checkbox"/> Cover title missing/
Le titre de couverture manque | <input checked="" type="checkbox"/> Pages discoloured, stained or foxed/
Pages décolorées, tachetées ou piquées |
| <input type="checkbox"/> Coloured maps/
Cartes géographiques en couleur | <input type="checkbox"/> Pages detached/
Pages détachées |
| <input type="checkbox"/> Coloured ink (i.e. other than blue or black)/
Encre de couleur (i.e. autre que bleue ou noire) | <input checked="" type="checkbox"/> Showthrough/
Transparence |
| <input type="checkbox"/> Coloured plates and/or illustrations/
Planches et/ou illustrations en couleur | <input type="checkbox"/> Quality of print varies/
Qualité inégale de l'impression |
| <input type="checkbox"/> Bound with other material/
Relié avec d'autres documents | <input type="checkbox"/> Includes supplementary material/
Comprend du matériel supplémentaire |
| <input type="checkbox"/> Tight binding may cause shadow or distortion
along interior margin/
La reliure serrée peut causer de l'ombre ou de la
distorsion le long de la marge intérieure | <input type="checkbox"/> Only edition available/
Seule édition disponible |
| <input type="checkbox"/> Blank leaves added during restoration may
appear within the text. Whenever possible, these
have been omitted from filming/
Il se peut que certaines pages blanches ajoutées
lors d'une restauration apparaissent dans le texte,
mais, lorsque cela était possible, ces pages n'ont
pas été filmées. | <input type="checkbox"/> Pages wholly or partially obscured by errata
slips, tissues, etc., have been refilmed to
ensure the best possible image/
Les pages totalement ou partiellement
obscurcies par un feuillet d'errata, une pelure,
etc., ont été filmées à nouveau de façon à
obtenir la meilleure image possible. |
| <input checked="" type="checkbox"/> Additional comments:/ [Printed ephemera] [4]p.
Commentaires supplémentaires: | |

This item is filmed at the reduction ratio checked below/
Ce document est filmé au taux de réduction indiqué ci-dessous.

10X	14X	18X	22X	26X	30X
<input type="checkbox"/>	<input type="checkbox"/>	<input type="checkbox"/>	<input type="checkbox"/>	<input checked="" type="checkbox"/>	<input type="checkbox"/>
12X	16X	20X	24X	28X	32X

The copy filmed here has been reproduced thanks to the generosity of:

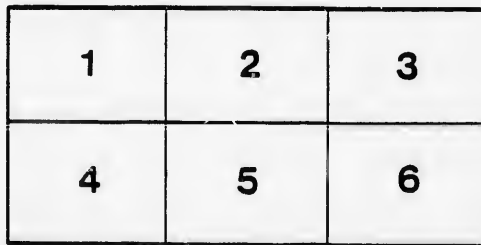
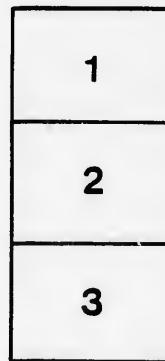
D. B. Weldon Library
University of Western Ontario
(Regional History Room)

The images appearing here are the best quality possible considering the condition and legibility of the original copy and in keeping with the filming contract specifications.

Original copies in printed paper covers are filmed beginning with the front cover and ending on the last page with a printed or illustrated impression, or the back cover when appropriate. All other original copies are filmed beginning on the first page with a printed or illustrated impression, and ending on the last page with a printed or illustrated impression.

The last recorded frame on each microfiche shall contain the symbol \rightarrow (meaning "CONTINUED"), or the symbol ∇ (meaning "END"), whichever applies.

Maps, plates, charts, etc., may be filmed at different reduction ratios. Those too large to be entirely included in one exposure are filmed beginning in the upper left hand corner, left to right and top to bottom, as many frames as required. The following diagrams illustrate the method:



L'exemplaire filmé fut reproduit grâce à la générosité de:

D. B. Weldon Library
University of Western Ontario
(Regional History Room)

Les images suivantes ont été reproduites avec le plus grand soin, compte tenu de la condition et de la netteté de l'exemplaire filmé, et en conformité avec les conditions du contrat de filmage.

Les exemplaires originaux dont la couverture en papier est imprimée sont filmés en commençant par le premier plat et en terminant soit par la dernière page qui comporte une empreinte d'impression ou d'illustration, soit par le second plat, selon le cas. Tous les autres exemplaires originaux sont filmés en commençant par la première page qui comporte une empreinte d'impression ou d'illustration et en terminant par la dernière page qui comporte une telle empreinte.

Un des symboles suivants apparaîtra sur la dernière image de chaque microfiche, selon le cas: le symbole \rightarrow signifie "A SUIVRE", le symbole ∇ signifie "FIN".

Les cartes, planches, tableaux, etc., peuvent être filmés à des taux de réduction différents. Lorsque le document est trop grand pour être reproduit en un seul cliché, il est filmé à partir de l'angle supérieur gauche, de gauche à droite, et de haut en bas, en prenant le nombre d'images nécessaire. Les diagrammes suivants illustrent la méthode.

re
détails
es du
modifier
er une
ilimage

es

errata
to

pelure,
on à



32X

... AN ...
APPETITE



For good things to eat is born in one. To satisfy that appetite, your food must be cooked properly. With us you can find the best the market affords. Oysters served in every style at shortest notice. A complete Wine List.

Office Restaurant

RICHMOND ST. Opposite Opera House Building

FRIED OYSTERS

AND POUCHED OYSTERS ON TOAST, at.....

Short Bros.



The only Restaurant in the City open for an Evening Lunch. Open till 12 p.m.

TRY A BOX OF MARCH CHOCOLATE
THEY ARE BEAUTIES

220 DUNDAS STREET

PRETTY DISHES



Are a mark of refinement. They make the plainest dinner taste better. They make a pleasure of eating. Many additions to the dining table can be made here at trifling cost.

YEO'S CHINA HALL

177 DUNDAS ST.

STYLISH



Our Stock of Ladies' Furs contains the choicest Novelties in all kinds of Furs

FURS

WE LEAD ... IN LATEST STYLES AT LOWEST PRICES

Repairing and Special Patterns Furnished. Estimates on Remodelling.

SEE OUR LATEST

"FESTA," "MARQUISE" and "OLGA" COLLARS. "FRILL" MUFFS

Milne, Spittal & Co. - 146 - DUNDAS ST.

MEAT...

FIT TO EAT.

Butchers, as a rule, do not advertise, but the quality of what I have to sell, as well as the reasonable prices I charge, make my store different from other butchers' stores.

JOHN BREEN

735 RICHMOND ST. 'PHONE 944.

Poultry and Game in Season.

CAST OF CHARACTERS.

- BILLY BUTTS, a youth of no importance,
- CLYDE STANLEY
- Isa Conboy, from Connemara, who recognizes no law.
- Jos. Harrington
- Robin Steel, whose highest ambition is to be low.
- Mart M. Fuller
- Willie Waits, witless but wealthy.
- Harry Groesbeck
- Handy Clubber, a policeman.
- Osborn Clemson
- Oiler Cann, an advocate of temperance.
- Daffy Dann, a pleasant gentleman.
- Walter A. Parr
- Mrs. Ultra Styles, a woman of experience,
- Miss Kate Griffiths
- Miss Mona Conboy, a mere child.
- Miss Fannie Gonzales
- Eata Spaghetti, a product of sunny Italy,
- Miss Alta de Kerman
- May Blossom.
- Miss Letta Lassen
- Daisy White.
- Miss Marie Troy
- Rose Strong.
- Miss Daisy Canarro
- Violet Wilde, a Bowery Girl.
- Miss Dell Lincoln
- Marie Heyacinth.
- Miss Clara Randall

Particular People

Are Always Welcome. We like fault-seekers to visit us. We invite them, for

Bell Pianos

Are made to stand criticism.

PROF. J. B. LABELLE, Organist Notre Dame Cathedral, Montreal, says:

"I received the magnificent piano of the Bell Co. which I ordered for my own personal use. I had been expecting a first class instrument, but the piano, which is a veritable jewel, surpasses all my hopes. It possesses a splendid quality of sound, rich, pure and melodious, with great evenness of the scale. The action is rapid, with great elasticity. I declare it an honor to Canada to possess a manufactory able to send out pianos like those of the Bell Co., which are unquestionably the best pianos made in Canada."

MADE AND GUARANTEED BY THE LARGEST MAKERS OF PIANOS IN CANADA.

Bell Piano Warerooms:

169 DUNDAS ST.

W. T. STRONG & CO.

Dispensing Chemists ...

184 DUNDAS ST., LONDON.

MARRIAGE LICENSES ISSUED.

HES

t. They
er taste
asure of
s to the
e here at

HALL
T.

ar
ople

visit us.

108

criticism.

ist Notre Dame

of the Bell Co.
se. I had been
he piano, which
es. It possesses
and melodious.
action is rapid,
onor to Canada
out pianos like
tionably the best

HE LARGEST
ANADA.

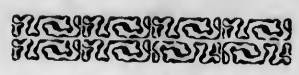
erooms:

ST.

WE cannot index our stock in this ad. Nothing short of seeing the quantity of merchandise and patterns can give you a notion of our stock.

O. LABELLE

Custom Tailoring only.
372 Richmond Street.



DO YOUR EYES FLOW

Or do your eyes close when exposed to a bright light? Better let a refractionist, who is an expert, make an examination. He can tell you just what the trouble is, if there is a trouble. If you should wear glasses, the sooner you do so the better for your future health and peace of mind.

F. C. LA GRANGE, M. O.
212 DUNDAS STREET
Over Runians & Butler.

SOMERVILLE'S

GUMS

ARE THE NICEST
IN THE MARKET

TRY OUR TWIN SNAPS

FOR SALE BY ALL DEALERS.



SYNOPSIS.

- ACT I.—House of Isa Conboy, in the malaria district, a few miles from a certain large city.
- ACT II.—The Rip and Tear Laundry, situated in a certain large city.
- ACT III.—Mrs. Ultra Styles' residence, in the same city.



NOTE.—Probably every individual in the audience has heard the old saying, that "one half of the world does not know how the other half lives." The author in this piece attempts to explain to the one half how the other half really does live, and by what means. The members of the company, who are musically inclined, will render selections to relieve the monotony of the explanation.



EXECUTIVE STAFF.

- BURTON STANLEY, - - - - - Manager
- WALTER A. PARR, - - - - - Stage Manager
- MME. MARIE CARSONI, - - - - - Musical Directress



THE TEGUMSEH

LONDON, ONT.



**FIRST-CLASS
IN ALL
APPOINTMENTS.**

SPECIAL RATES ...
FOR COMPANIES

CHAS. W. DAVIS,
Proprietor.

GRAND OPERA HOUSE

THREE NIGHTS, **OCTOBER 11, 12, 13**
MATINEE WEDNESDAY

Jas. H. Wallick's Big Scenic Production

WHEN

A GREAT
SUCCESS
IN ENGLAND

LONDON

A GREATER
SUCCESS
IN AMERICA

SLEEPS

*With the Original Company and Scenery direct from
the Fourteenth St. Theatre, New York City.*

