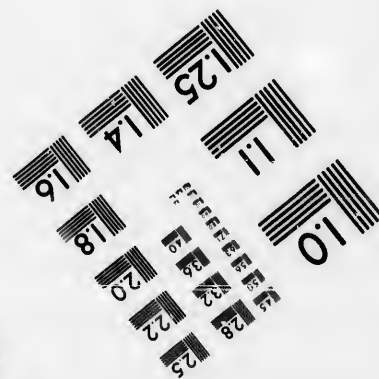
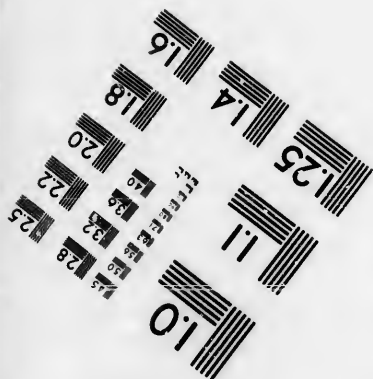
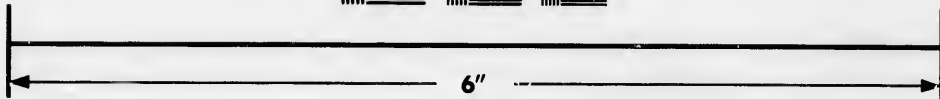
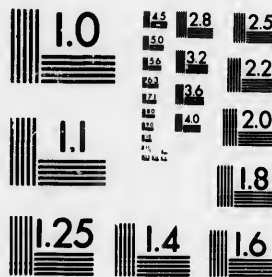


**IMAGE EVALUATION
TEST TARGET (MT-3)**



**Photographic
Sciences
Corporation**

23 WEST MAIN STREET
WEBSTER, N.Y. 14580
(716) 872-4503

1.5 1.8 2.0 2.2 2.5
2.8 3.2 3.6 4.0

**CIHM/ICMH
Microfiche
Series.**

**CIHM/ICMH
Collection de
microfiches.**



Canadian Institute for Historical Microreproductions / Institut canadien de microreproductions historiques

1.5 1.8 2.0 2.2 2.5
2.8 3.2 3.6 4.0

© 1986

Technical and Bibliographic Notes/Notes techniques et bibliographiques

The Institute has attempted to obtain the best original copy available for filming. Features of this copy which may be bibliographically unique, which may alter any of the images in the reproduction, or which may significantly change the usual method of filming, are checked below.

L'Institut a microfilmé le meilleur exemplaire qu'il lui a été possible de se procurer. Les détails de cet exemplaire qui sont peut-être uniques du point de vue bibliographique, qui peuvent modifier une image reproduite, ou qui peuvent exiger une modification dans la méthode normale de filmage sont indiqués ci-dessous.

- | | |
|--|--|
| <input type="checkbox"/> Coloured covers/
Couverture de couleur | <input checked="" type="checkbox"/> Coloured pages/
Pages de couleur |
| <input type="checkbox"/> Covers damaged/
Couverture endommagée | <input type="checkbox"/> Pages damaged/
Pages endommagées |
| <input type="checkbox"/> Covers restored and/or laminated/
Couverture restaurée et/ou pelliculée | <input type="checkbox"/> Pages restored and/or laminated/
Pages restaurées et/ou pelliculées |
| <input type="checkbox"/> Cover title missing/
Le titre de couverture manque | <input type="checkbox"/> Pages discoloured, stained or foxed/
Pages décolorées, tachetées ou piquées |
| <input type="checkbox"/> Coloured maps/
Cartes géographiques en couleur | <input type="checkbox"/> Pages detached/
Pages détachées |
| <input type="checkbox"/> Coloured ink (i.e. other than blue or black)/
Encre de couleur (i.e. autre que bleue ou noire) | <input type="checkbox"/> Showthrough/
Transparence |
| <input type="checkbox"/> Coloured plates and/or illustrations/
Planches et/ou illustrations en couleur | <input type="checkbox"/> Quality of print varies/
Qualité inégale de l'impression |
| <input type="checkbox"/> Bound with other material/
Relié avec d'autres documents | <input type="checkbox"/> Includes supplementary material/
Comprend du matériel supplémentaire |
| <input type="checkbox"/> Tight binding may cause shadows or distortion
along interior margin/
La reliure serrée peut causer de l'ombre ou de la
distorsion le long de la marge intérieure | <input type="checkbox"/> Only edition available/
Seule édition disponible |
| <input type="checkbox"/> Blank leaves added during restoration may
appear within the text. Whenever possible, these
have been omitted from filming/
Il se peut que certaines pages blanches ajoutées
lors d'une restauration apparaissent dans le texte,
mais, lorsque cela était possible, ces pages n'ont
pas été filmées. | <input type="checkbox"/> Pages wholly or partially obscured by errata
slips, tissues, etc., have been refilmed to
ensure the best possible image/
Les pages totalement ou partiellement
obscurcies par un feuillet d'errata, une palure,
etc., ont été filmées à nouveau de façon à
obtenir la meilleure image possible. |

Additional comments: [Printed ephemera] 1 sheet (verso blank)
Commentaires supplémentaires:

This item is filmed at the reduction ratio checked below/
Ce document est filmé au taux de réduction indiqué ci-dessous.

10X	12X	14X	16X	18X	20X	22X	24X	26X	28X	30X	32X
							/				

The copy filmed here has been reproduced thanks to the generosity of:

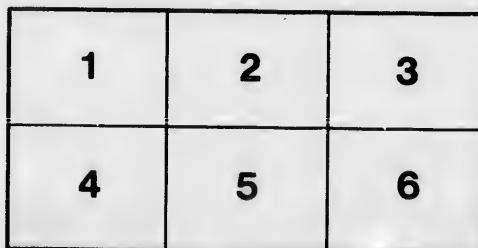
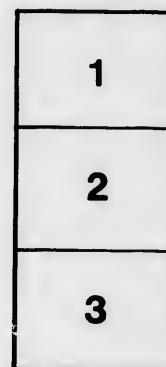
Library of the Public
Archives of Canada

The images appearing here are the best quality possible considering the condition and legibility of the original copy and in keeping with the filming contract specifications.

Original copies in printed paper covers are filmed beginning with the front cover and ending on the last page with a printed or illustrated impression, or the back cover when appropriate. All other original copies are filmed beginning on the first page with a printed or illustrated impression, and ending on the last page with a printed or illustrated impression.

The last recorded frame on each microfiche shall contain the symbol \rightarrow (meaning "CONTINUED"), or the symbol ∇ (meaning "END"), whichever applies.

Maps, plates, charts, etc., may be filmed at different reduction ratios. Those too large to be entirely included in one exposure are filmed beginning in the upper left hand corner, left to right and top to bottom, as many frames as required. The following diagrams illustrate the method:



L'exemplaire filmé fut reproduit grâce à la générosité de:

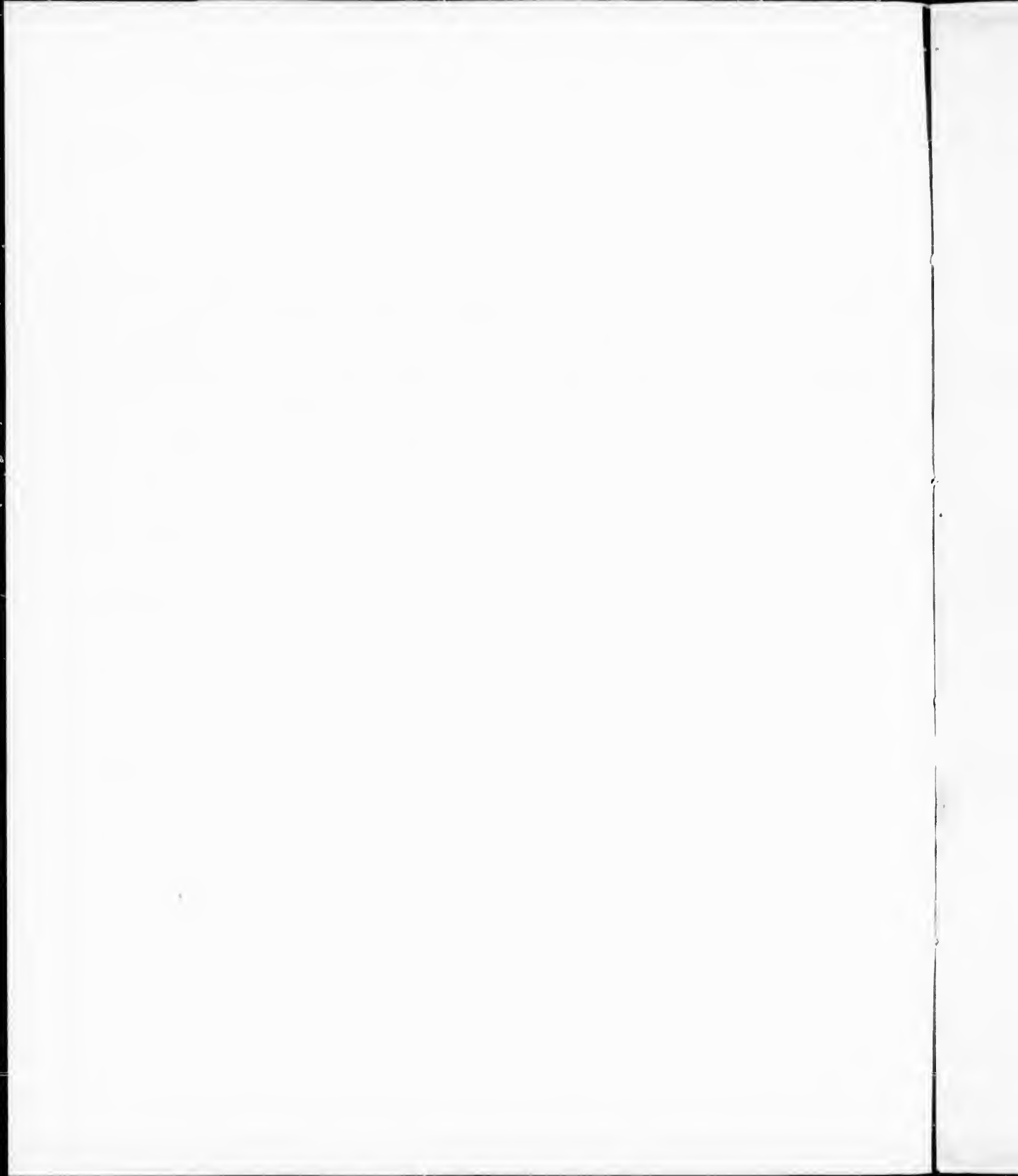
La bibliothèque des Archives
publiques du Canada

Les images suivantes ont été reproduites avec le plus grand soin, compte tenu de la condition et de la netteté de l'exemplaire filmé, et en conformité avec les conditions du contrat de filmage.

Les exemplaires originaux dont la couverture en papier est imprimée sont filmés en commençant par le premier plat et en terminant soit par la dernière page qui comporte une empreinte d'impression ou d'illustration, soit par le second plat, selon le cas. Tous les autres exemplaires originaux sont filmés en commençant par la première page qui comporte une empreinte d'impression ou d'illustration et en terminant par la dernière page qui comporte une telle empreinte.

Un des symboles suivants apparaîtra sur la dernière image de chaque microfiche, selon le cas: le symbole \rightarrow signifie "A SUIVRE", le symbole ∇ signifie "FIN".

Les cartes, planches, tableaux, etc., peuvent être filmés à des taux de réduction différents. Lorsque le document est trop grand pour être reproduit en un seul cliché, il est filmé à partir de l'angle supérieur gauche, de gauche à droite, et de haut en bas, en prenant le nombre d'images nécessaire. Les diagrammes suivants illustrent la méthode.



TORONTO ACADEMY.

ONTARIO TERRACE, TORONTO, *May 1st, 1877.*

SIR,—

The TORONTO ACADEMY, which was opened in the end of last September, having now attained some degree of maturity, the Directors feel themselves called upon to press its claims to confidence and support on the attention of the community; and they earnestly solicit your assistance in doing so.

They adopt this course in the persuasion that such an Institution as the Academy, while it must and ought eventually to stand or fall by its own merits, is in a great measure dependent, at the outset, on the influence and exertions of those who have the best means of knowing its character, and that of the parties conducting it.

The great aim of the founders of the TORONTO ACADEMY, as you may be aware, has been, to establish a Seminary thoroughly imbued with christian influences, and combining with these the advantages of a judicious course of Classical and Commercial Education, and an efficient system of Teaching and Discipline.

The BOARDING DEPARTMENT of the Institution, in particular, the Directors have been desirous to place on such a footing as to its religious, moral, and intellectual character, as should entitle it to the entire confidence of Parents and Guardians throughout the Province.

The Directors feel that they can now say, without hesitation, that these objects, and especially the last and most important of them, have been satisfactorily attained. They believe that the elements of a liberal Education will now be effectually communicated in the TORONTO ACADEMY, and that the youth residing within the walls of the Institution will enjoy in a high degree the comfort and care of the parental roof, and will in all respects be under christian influences and kind and judicious management.

As the Directors have no pecuniary interest in the Institution, they feel that they can express themselves without reserve regarding its merits; and if you are able to concur in the views which they have presented, they earnestly beg that you will exert your influence in obtaining pupils for the Academy.

The Directors will only add, that having, in this undertaking, endeavoured, at considerable personal trouble and responsibility, to promote the interests of sound Christian Education in the country, they confidently hope for countenance and support.

They subjoin for reference, a statement of the terms and other particulars.

By order of the Managers.

S. SPREULL, SECRETARY.

The following are the Branches taught, and the Terms of Boarding and Tuition:—

- I. Elementary Instruction, including English Reading and Spelling, Writing, and Primary Lessons in Arithmetic, Geography, and the Latin Language—THREE DOLLARS PER QUARTER.
- II. Classical and Commercial Departments, including English in all its details, Reading, Recitation, Grammar, Composition; Arithmetic, theoretical and practical; Book-keeping; the Elements of Geometry, Trigonometry, Mensuration, Algebra; Geography and History, Ancient and Modern; Latin and Greek Languages and Literature—FIVE DOLLARS PER QUARTER.
- III. The higher Mathematical pursuits, together with the more advanced Classics; French and other Modern Languages; Drawing, and other accomplishments—to be charged according to circumstances.

BOARD, WITH THE PRINCIPAL—*Two Dollars per Week*, besides separate charge for *Washing*. A small charge will be made on Pupils in both Departments, during winter months, for *Fuel*.

PRINCIPAL,—The Rev. ALEX. GALE, A. M., Professor of Classical Literature, Knox's College, Toronto.

FIRST ASSISTANT MASTER,—The Rev. THOS. WIGHTMAN.

SECOND ASSISTANT MASTER,—Mr. THOS. HENNING.

Classes for instruction in the French Language are conducted by M. DESLANDES, a highly qualified Teacher.

Mr. GEORGE JAMIESON and Mr. GEORGE WARDROPE have also been engaged as Assistants in the Institution.

The Dues of Pupils, whether Boarders or Day Scholars, to be paid in advance, or at farthest, before the end of each Quarter. The Year is divided into periods of Eleven Weeks; and the following arrangement of periods has, for the sake of convenience, been adopted:—

From SEPTEMBER 1st.....	to	NOVEMBER 17th.
From NOVEMBER 18th.....	to	FEBRUARY 10th.
From FEBRUARY 11th.....	to	MAY 1st.
From MAY 2nd.....	to	JULY 12th.

Eight Weeks are allowed for Vacation—one Week at New Year, and the rest from July 12th to September 1st

