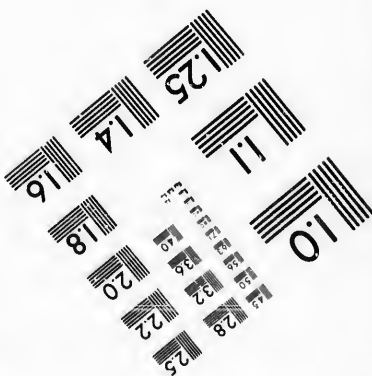
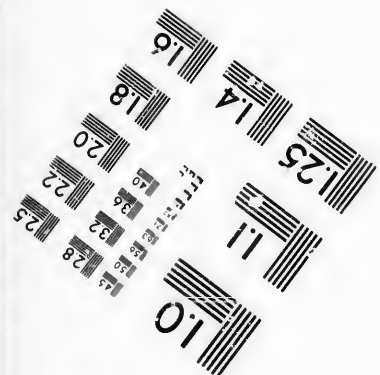
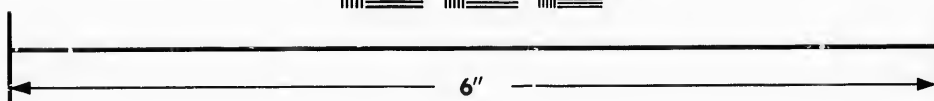
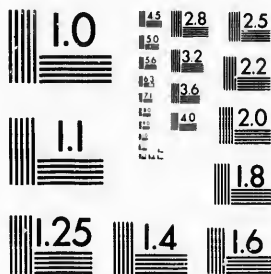


**IMAGE EVALUATION
TEST TARGET (MT-3)**



**Photographic
Sciences
Corporation**

23 WEST MAIN STREET
WEBSTER, N.Y. 14580
(716) 872-4503



**CIHM/ICMH
Microfiche
Series.**

**CIHM/ICMH
Collection de
microfiches.**



Canadian Institute for Historical Microreproductions / Institut canadien de microreproductions historiques



© 1987

Technical and Bibliographic Notes/Notes techniques et bibliographiques

The Institute has attempted to obtain the best original copy available for filming. Features of this copy which may be bibliographically unique, which may alter any of the images in the reproduction, or which may significantly change the usual method of filming, are checked below.

L'Institut a microfilmé le meilleur exemplaire qu'il lui a été possible de se procurer. Les détails de cet exemplaire qui sont peut-être uniques du point de vue bibliographique, qui peuvent modifier une image reproduite, ou qui peuvent exiger une modification dans la méthode normale de filmage sont indiqués ci-dessous.

- | | |
|--|---|
| <input checked="" type="checkbox"/> Coloured covers/
Couverture de couleur | <input type="checkbox"/> Coloured pages/
Pages de couleur |
| <input type="checkbox"/> Covers damaged/
Couverture endommagée | <input type="checkbox"/> Pages damaged/
Pages endommagées |
| <input type="checkbox"/> Covers restored and/or laminated/
Couverture restaurée et/ou pelliculée | <input type="checkbox"/> Pages restored and/or laminated/
Pages restaurées et/ou pelliculées |
| <input type="checkbox"/> Cover title missing/
Le titre de couverture manque | <input checked="" type="checkbox"/> Pages discoloured, stained or foxed/
Pages décolorées, tachetées ou piquées |
| <input type="checkbox"/> Coloured maps/
Cartes géographiques en couleur | <input type="checkbox"/> Pages detached/
Pages détachées |
| <input type="checkbox"/> Coloured ink (i.e. other than blue or black)/
Encre de couleur (i.e. autre que bleue ou noire) | <input checked="" type="checkbox"/> Showthrough/
Transparence |
| <input type="checkbox"/> Coloured plates and/or illustrations/
Planches et/ou illustrations en couleur | <input type="checkbox"/> Quality of print varies/
Qualité inégale de l'impression |
| <input type="checkbox"/> Bound with other material/
Relié avec d'autres documents | <input type="checkbox"/> Includes supplementary material/
Comprend du matériel supplémentaire |
| <input type="checkbox"/> Tight binding may cause shadows or distortion
along interior margin/
La reliure serrée peut causer de l'ombre ou de la
distorsion le long de la marge intérieure | <input type="checkbox"/> Only edition available/
Seule édition disponible |
| <input type="checkbox"/> Blank leaves added during restoration may
appear within the text. Whenever possible, these
have been omitted from filming/
Il se peut que certaines pages blanches ajoutées
lors d'une restauration apparaissent dans le texte,
mais, lorsque cela était possible, ces pages n'ont
pas été filmées. | <input type="checkbox"/> Pages wholly or partially obscured by errata
slips, tissues, etc., have been refilmed to
ensure the best possible image/
Les pages totalement ou partiellement
obscuries par un feuillet d'errata, une pelure,
etc., ont été filmées à nouveau de façon à
obtenir la meilleure image possible. |
| <input type="checkbox"/> Additional comments:/
Commentaires supplémentaires: | |

This item is filmed at the reduction ratio checked below/
Ce document est filmé au taux de réduction indiqué ci-dessous.

10X	12X	14X	16X	18X	20X	22X	24X	26X	28X	30X	32X
					/						

The copy filmed here has been reproduced thanks to the generosity of:

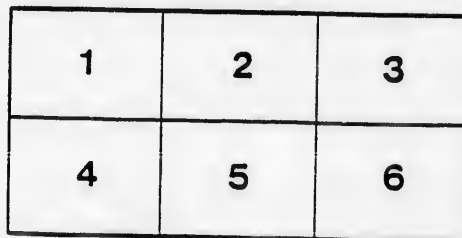
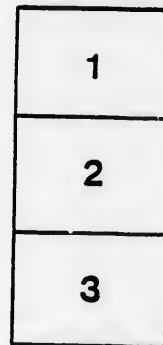
Musée du Château Ramezay,
Montréal

The images appearing here are the best quality possible considering the condition and legibility of the original copy and in keeping with the filming contract specifications.

Original copies in printed paper covers are filmed beginning with the front cover and ending on the last page with a printed or illustrated impression, or the back cover when appropriate. All other original copies are filmed beginning on the first page with a printed or illustrated impression, and ending on the last page with a printed or illustrated impression.

The last recorded frame on each microfiche shall contain the symbol \rightarrow (meaning "CONTINUED"), or the symbol ∇ (meaning "END"), whichever applies.

Maps, plates, charts, etc., may be filmed at different reduction ratios. Those too large to be entirely included in one exposure are filmed beginning in the upper left hand corner, left to right and top to bottom, as many frames as required. The following diagrams illustrate the method:



L'exemplaire filmé fut reproduit grâce à la générosité :

Musée du Château Ramezay,
Montréal

Les images suivantes ont été reproduites avec le plus grand soin, compte tenu de la condition et de la netteté de l'exemplaire filmé, et en conformité avec les conditions du contrat de filmage.

Les exemplaires originaux dont la couverture en papier est imprimée sont filmés en commençant par le premier plat et en terminant soit par la dernière page qui comporte une empreinte d'impression ou d'illustration, soit par le second plat, selon le cas. Tous les autres exemplaires originaux sont filmés en commençant par la première page qui comporte une empreinte d'impression ou d'illustration et en terminant par la dernière page qui comporte une telle empreinte.

Un des symboles suivants apparaîtra sur la dernière image de chaque microfiche, selon le cas: le symbole \rightarrow signifie "A SUIVRE", le symbole ∇ signifie "FIN".

Les cartes, planches, tableaux, etc., peuvent être filmés à des taux de réduction différents. Lorsque le document est trop grand pour être reproduit en un seul cliché, il est filmé à partir de l'angle supérieur gauche, de gauche à droite, et de haut en bas, en prenant le nombre d'images nécessaire. Les diagrammes suivants illustrent la méthode.

CATALOGUE OF STAMPS.

FIRST SALE

—OF THE—

MONTREAL

STAMP COLLECTOR'S CLUB,

TO BE HELD IN THEIR ROOMS,

ALEXANDRIA HALL, 2204 St. Catherine Street,

MONTREAL, P. Q.

—ON—

THURSDAY EVENING, April 23rd, 1896,

At EIGHT o'clock, P.M.

The STAMPS will be on exhibition EVERY
THURSDAY EVENING to date of
Sale, at the Society's Rooms,
No. 2204 ST. CATHERINE STREET.

TO BIDDERS.

THE Members of the **Montreal Stamp Collector's Club** present this the Catalogue of their first sale to you, and would ask your careful perusal of same.

Although there are no great rareties in the sale, still it contains a good many desirable stamps, which are lacking in most collections.

We beg to draw your attention to the following:—

1st.—Stamps are sold so much for each lot.

2nd.—Name highest amount you are willing to pay for each lot. They will be bought as much below your limit as possible.

3rd.—Purchases are for Cash on receipt. Where bidders unknown to members secure lots, they will be notified, and lots will then be forwarded on receipt of the amount. The purchaser pays postage and registration.

4th.—The Stamps have been carefully catalogued, but purchasers have the right to return within three days, all Stamps not found as described.

The Committee in charge of this sale, or any member, will execute bids free of charge.

Major A. E. LABELLE, St. Hubert Street, Montreal.

W. PATTERSON, 33 Torrance Street, do

W. E. MUIR, (Wm. Muir & Son), do

C. A. REYNOLDS, 88 St. Luke Street, do

E. W. STANTON, 398 St. Andre Street, do

CATALOGUE.

CANADA.

BIDS ARE SO MUCH FOR EACH LOT.

Lot No.			Catalogue Price.	No. in Lot.
1	1851.	3d Laid, fine,	1 50	1
2	"	3d Laid and Wove, fine,	1 85	2
3	"	6d Thin Wove on face of cover, very fine,	6 00	1
4	"	12d Thin Paper. Specimen in red,	10 00	1
5	1855.	10d " Cut close,	10 00	1
5a	"	7½d Little close top and bottom, used,	20 00	1
6	"	½d Wove, fair copy, slight tear,	4 00	1
7	1858.	3d Ribbed, fine,	2 50	1
8	"	½d Perf. on cover, fine,	8 50	1
9	"	½d " poor copy,	8 50	1
10	"	3d " good copy, pen marked,	3 50	1
11	"	3d " on cover, fine,	3 50	1
12	1859.	1, 2, 5, 10, 12½, 17, fair,	3 58	6
13	"	1, 2, 5, 10, "	1 68	4
14	1868.	½c strip, unused, O. G.,	60	3
15	"	1, 1, 2, 3, 6, 6, 12½, 15, fine,	1 19	8
16	"	1, 1, 2, 3, 6, 6, and 1875, 5c. fine,	1 44	7
17	"	3 ct. Wove, w. mk Laid, latter trimmed on 2 sides.	6 54	3
18	"	1, 2 w. mk, fine copies,	4 50	2
19	"	12½ w. mk, fine,	3 00	1
20		8 ct. Registration unused, O. G.,	2 50	1
21		" " used, fine,	2 50	1
22	1860,	Envelope, 5c., cut square, fine,	1 50	1
23		Wrappers, 4 varieties, cut square,	85	4

BRITISH COLUMBIA.

24	2½d. 5 ct. Rose, 10 ct. Blue, 3d. used, good,	11.50	4
25	1865. 5 ct. Rose, 10 ct. Blue, used, latter slight tear off centre,	6 50	2

NEW BRUNSWICK.

Lot No.			Catalogue Price.	No in Lot.
26	1851.	3d. Red dark color, used, fine,	4 50	1
27	do	3d. Red on original, fine	4 50	1
28	1860.	Blocks of 4 each of 1, 2, 5, 10, 12½, 17c., unused, fine,	6 12	24
29	do	1, 2, 5, 10, 12½, 17, unused, fine,	1 53	6
30	do	2, 5, 10, used, good,	1 00	3

NEWFOUNDLAND.

31	1857.	1d, Violet brown, unused, fine,	3 50	1
32	do	3d, Green, do do O.G.	1 50	1
32a	do	4d, Scarlet, small margins, fine color, used,	25 00	1
33	1863.	2d, Lake, unused, fine,	8 00	1
33a	1857.	4d, Orange, small margins, fine color, used,	17 00	1
34	1863.	4d, Lake, entire sheet, do O. G.	15 00	20
34a	1857.	6d, Orange, little close at right, used,	16 00	1
35	1863.	6d, 1/, Lake, unused, fine, O. G.	2 25	2
36	do	8d, do do do	3 00	1
37	1866.	5c, Brown, fine, used,	7 50	1
38	do	5c, Black, perf., cut in at left,	4 00	1
39	do	13c, Orange, light shade, fine, used,	1 25	1
40	do	3c, Vermillion, piece off lower left corner, used,	3 00	1
41	1876,	Roul, 3, 5, used. 24c, perf, unsd. Canada, 50c. used,	2 20	4
42	do	do 2, 3, 5c, used, fine,	2 10	3
43	1880.	1, 1, 2, 3, 5, used, fine. } Envelope 3, 5. Wrappers, 1, 2, 3, }	.91	10

NOVA SCOTIA.

44.	1851,	1d Trimmed, otherwise fine	8 00	1
45.	"	3d Lt. Blue, on original, fine	1 50	1
46.	"	3d Dk. Blue, used, fine,	1 75	1
47.	1860,	8½c White Paper, used, fine. Slightly off center	12 00	1
48.	"	1c Unused. 10, 12½, used, fine	4 25	3

PRINCE EDWARD ISLAND.

Lot No.		Catalogue Price.	No. in Lot.
49.	2, 3, 4d, 1, 2, 4, 6, 12c, unused, good	1 70	8
50.	2c. Blue, used, fine	5 00	1
51.	3c. Rose, used, fine	2 50	1
52.	12c. Lilac, used, fine	6 00	1

UNITED STATES.

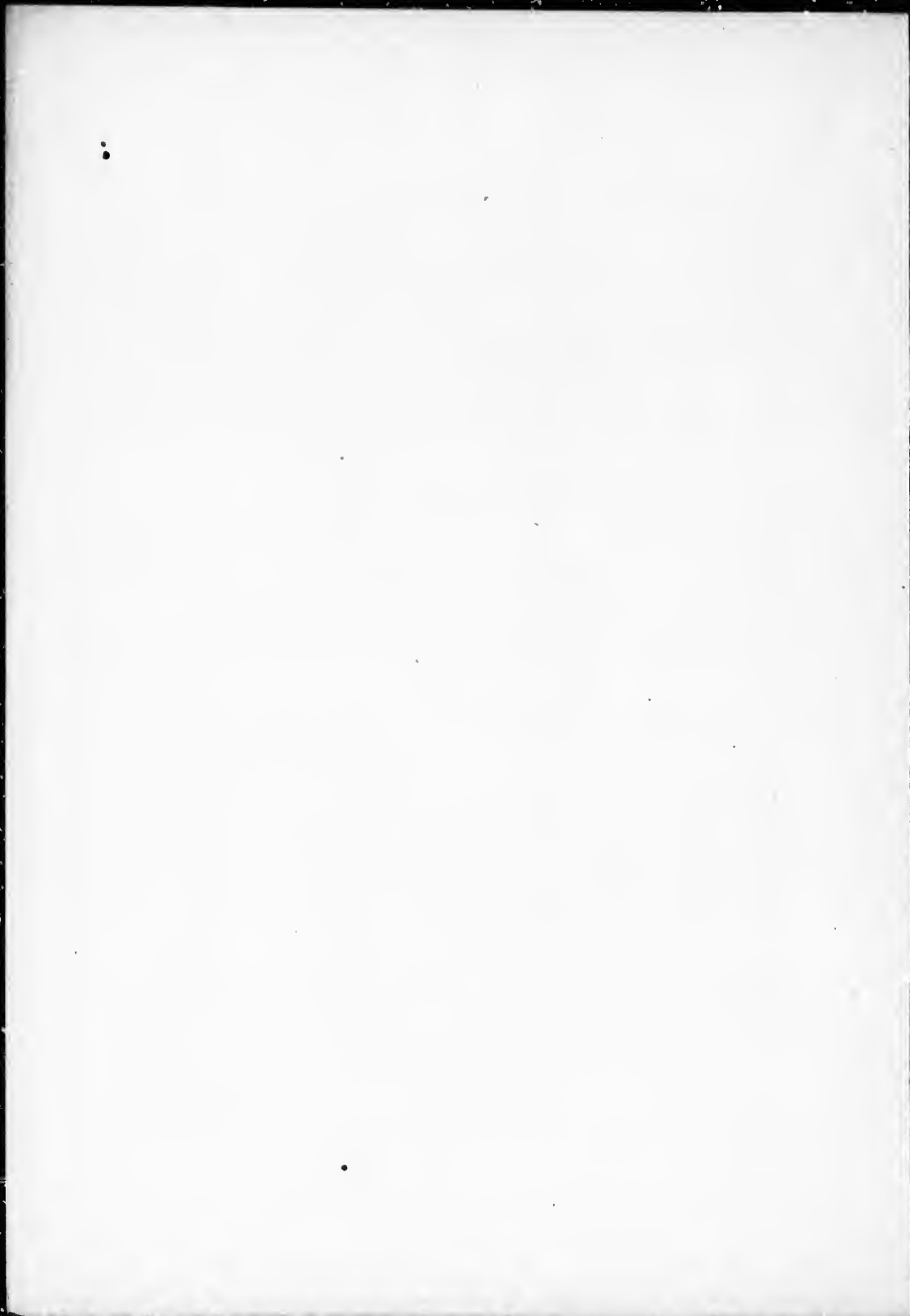
53.	New York, 5c, Black, 2 nicks in top.	8 00	1
54.	1847. 10c, small piece off corner	4 00	1
55.	" 10c, Red cancellation, fine	4 00	1
56.	1851. 5c, Brown, fine, cut close at bottom	11 00	1
57.	" 12c, pair unsevered, fine, used	3 50	2
58.	1856. 5c, Brown Type II, fine, used	2 50	1
59.	" 24c, Lilac, fine, used	4 50	1
60.	1861. 90c, mended, otherwise fine	3 50	1
61.	1868. 3c, Rose, grill, 13x16, off center	8 00	1
62.	" 1c, Blue, " 11x13, used, fine	1 25	1
63.	" 15c, Black " 11x13, used, fine	8 00	1
64.	" 90c, Blue " 9x13, used, fine	15 00	1
65.	1869. 1, 2, 3, 6, 10, 12, 15, no diamond, used, fair	6 57	1
65a.	" 6c, unused, fine, centered, no gum	2 50	1
66.	" 24c, not well centered, used, fine	7 50	1
67.	" 24c, " " " "	7 50	1
68.	1869. Reprint, 2c, Brown, unused, fine, no gum	7 50	1
69.	" " 10c, Orange, " " no perf. on one side	10 00	1
70.	" " 15c, used, fine	7 50	1
71.	1872. 24c, used, fine	2 00	1
72.	" 1, 1, 2, 2, 3, 5, 6, 10, 12, 15, 24, 30, 90, various printings, good	5 14	13
73.	" 12, 12, 24, used, fair	3 50	3
74.	1893. 50 and 1.00, used together on piece of cover, fine	7 00	2
75.	1865. Newspaper, 5c, white border, unused, fine	2 00	1
76.	" " 10c, Green, unused, imp. at bottom	7 50	1
77.	" " 25c, Red, " fine	7 50	1
78.	1875. " 9c, Black, pen cancelled, fine	15 00	1
79.	Agriculture, 1c, unused, 3 and 6, used, good	3 00	3

Lot No.		Catalogue Price.	No. in Lot.
80.	Justice, 15c, used, good	5 00	1
81.	" 30c, unused, fine, no gum	25 00	1
82.	" 90c, used, off center, but good	60 00	1
83.	Navy, 24c, used, no perf. at bottom	4 00	1
84.	" 90c, used, fine	7 50	1
85.	State, 30c, used, off center, fine	5 00	1
86.	Post Office, 3c, Block, unused, O. G.	50	10
87.	" 12c, Block, unused, O. G.	6 00	8
88.	Treasury, 24c, used, fine	5 00	1
89.	" " " "	5 00	1
90.	1861, CONFEDERATE STATES, 10c. Blue used, fine,	1 00	1
91.	AFGHANISTAN, 1 sh. Gray Scott, No. 20, unused, fine,	1 50	1
92.	" 1 sh. 1877, unused fine,	2 00	1
93.	" 1 ab. 1889 on original,	2 00	1
94.	ANTIGUA, 6d. Green C. C., 12½ and 14 used, fine,	2 50	2
95.	" 4d., C. C., 4d. Brown C. A., used,	1 25	2
95a.	" 1d., 2½d., 6d., 4d., Blue C. A. used, fine.	2 08	4
96.	BAHAMAS, 1d., 4d., C. C. 14, 6d., C. C. 12½, used, good,	2 10	3
97.	BARBADOES STAR, ½d., 1d., ½d., C. C., 12½ and 14; 1d. C. C. 14, used, fine,	1 76	5
98.	" ½d, 4d, 1s., C.C., 12½d, used, fine,	4 50	3
99.	" 4, 1s, C.C. 12½d, ½ 6d, C.C., 14, used, good,	4 10	4
99a.	BRITISH GUIANA, 1862, 1c., red brown, very fine,	7 50	1
100.	BHOPAL, ¼, a Green, 1884, unused,	6 25	1
101.	CASHMERE, ¼r. Orange, ¼r. Slate, unused fine,	6 00	2
101a.	CEYLON, 1861. 8d, brown red Star, used, fine,	25 00	1
102.	CYPRUS 4 p. Olive, unused C. C. fine,	2 00	1
102a.	DOMINICA, 1d, C. C. 12½ unused, 6d used, fine,	6 00	2
103.	" 1d, 12½ used, ½d., C.C. 14 unused,	2 50	2
104.	" 2½ and 4d. C. A., used fine,	1 60	2
105.	" 1 and 4d. C. C. 14, used fine,	1 60	2
106.	FALKLAND ISLANDS, 4d., C. A. sideways, unused fine,	2 50	1
106a.	GOLD COAST, 1d., blue C. A., very fine,	4 00	1
107.	GRENADA, 1d. unused, and 6d. Star used,	2 00	2
108.	GRIQUALAND, 4d. in red, on 4d., Scott No. 1, fine,	10 00	1
109.	INDIA, 2 Annas, 1854, unused, fine,	7 50	1
110.	" 1a. brown, small service Scott's, 202,	3 50	1
111.	LAGOS, 6d, C.C., 12½, used, fine,	1 25	1
112.	MALTA, ½d., C.C., 14, 12½ and 12½ x 14, used, good,	1 75	3

Lot No.		Catalogue Price.	No in Lot.
113.	NATAL, 1876, 1d, yellow used, fine,	2 00	1
113a.	NEVIS, 4d, orange, engraved, slight tear mended, otherwise fine,	8 50	1
114.	" ½d, in black, on one-half of 1d on cover, fine,	3 00	1
114a	" 6d, Lithograph Surecharged Revenue, unused O. G.—	—	1
115	" 1867, 1d, litho, unused, fine,	1 50	1
115a	" 1882-84, 2½, blue, 4d. blue, C. A., used, fine,	5 75	2
116	NEW SOUTH WALES, 1850, Sydney View, 2d. blue laid, Scott, No. 18,	7 50	1
117	" 1851, 1d, Red on blue, unused, cut close and creased,	—	1
118	" 1851, 8d, Yellow, Scott, No. 37, used, fine, heavy cancellation,	15 00	1
119	" 1860, 6d, Violet, unused, fine,	3 25	1
120	" 1856, 3d. Green, 2 fine shades, used,	7 50	2
121	NEW ZEALAND, 1858, 2d. Blue, thick paper, unused, cut close on one side,	10 00	1
REVENUES USED FOR POSTAGE.			
122	7 sh. Scott's, No. 232, fine,	—	1
122a	2-6, and 5s. Nos. 221 and 227, fine.	—	2
123	£1, Scott's, No. 242, "	—	1
124	7-6 sh, " 260, "	2 00	1
124a	9s., 10s., & £1, " 262, 263, & 266, fine,	2 75	3
125	£2, Scott's, " 269, "	2 25	1
126	£3, " " 271, "	3 50	1
127	£5, " " 273, "	7 50	1
128	£10, " " 278, "	10 00	1
128a	6s, 7s & 8s. " " 258, 259, 261, "	2 10	3
128b	1d. Blue, 2s, 2-6, 3s, 4s, 4s, and 5s,	1 76	7
129	ST. HELENA, C.C. 1d, 12½ x 14, and 2d, 14, perf., fine, unused,	3 50	2
130	ST. CHRISTOPHE, C.C., 1d, and 6d, 12½, perf., used, fine,	2 00	2
130a	" C.A., 4d, blue, used, very fine,	4 00	1
131	ST. LUCIA, C.A., 4d, yellow & black, perf., 12, used, fine,	3 50	1
132	ST. VINCENT, 1s, brown, very good, used, copy,	10 00	1
133	" 6d, yellow green star, used, fine,	2 00	1
134	" 4d, Orange, no w. mk., used, fine,	20 00	1
135	SCINDE DAWK, ½ an. 1850, used, fine,	4 00	1
136	TASMANIA, 5s, Olive, Revenue, postally used, fine	3 75	1
137	TOBAGO, 5s, Grey, C.C., unused, fine, no gum,	—	1

Lot No.		Catalogue Price.	No. in Lot.
138	TRANSVAAL, $\frac{1}{2}$, 1, 3, 4, 6d, 1878, good copies,	2 33	5
139	" 1s, Green, used, fine,	2 50	1
140	VICTORIA, Registered, 1s, Red and Blue, used, fine,	3 75	1
141	" 1861, 3d, Claret, unused, off centre,	12 50	1
142.	ARGENTINE, 1892, 2 and 5c, Blue, used, fine	80	2
143.	BAVARIA, 1862, 6 kr. Blue, unused, fine	1 25	1
144.	" 1867-8, 6 kr. Stone, unused, 12 and 18 k., used, fine	4 00	3
145.	" 1870, 12 kr., Lilac, horiz., laid, used, fine	10 00	1
146.	" 1875, 1 kr., Green, and 3 kr. Rose, in blocks and pairs, unused	60	20
147.	BREMEN, 1861, 5 grt. Green roul, used, fine	5 00	1
148.	" 1855, 3 grt. Blue, fair, used, but cut close	5 00	1
149.	CUBA, 1855, Y $\frac{1}{4}$, on Carmine, used, fine	2 50	1
150.	FRANCE, 1853, 1 fr. Lake, used, fine	4 50	1
151.	FRENCH COLONIES, 1876, 4c, Grey, used, fine	8 00	1
152.	GUATEMALA, 1878, complete, used, fine	1 10	4
153.	HAMBURG, 1861-5, $\frac{1}{2}$, 1, 1 $\frac{1}{4}$, 2, 2 $\frac{1}{2}$, 3, 4 and 7 sch., five unused	2 85	8
154.	" 1859, $\frac{1}{2}$, 1, 2, 3 and 7 sch., two unused, all cut close	8 45	5
155.	HANOVER, 1861, 10 g, Green, very fine, used copy	18 00	1
156.	Withdrawn		
157.	HANOVER, 1859, $\frac{1}{2}$ g, Black, fine, used	2 00	1
158.	" 1851-6, 1-30, 1-15, 1-10th, 1 gr., 1-30, 1-10th, two copies only, fine	2 00	6
158a.	HAWAII, 1864-72, all fine, 4 unused	1 71	8
159.	" 1883, 25c, Purple, used, fine	1 00	1
160.	" 1864-71, 1c, Violet, 2c, ver., in blocks, unused	1 80	8
161.	" " 1c, " 2c single and pairs, "	1 35	6
162.	" 1893, 4 Prov. Government and 2 cut envls	96	6
163.	HELIGOLAND, 1875, 1 p. and 2 p. unused blocks	2 80	8
164.	" " 1 p. and 2 p. " pairs	1 40	4
165.	" " 5 p., used, fine	1 50	1
166	ITALY, Segnatasse and Official, used, fine,	1 02	18
167	JAPAN, 1874, 30 sen, Grey, used, fine,	2 50	1
168	" " 4 sen, Ros \odot , unused, no gum,	8 50	1

Lot No.		Catalogue Price.	No. in Lot.
169	LUBECK, 1863, 2½ sc, Blue, " block, fine,	3 40	4
170	" " 2½ sc, " " pair,	1 70	2
171	" " 2 sc, Rose, " block, fine,	1 60	4
172	" " 1½ sc, Mauve, " " "	1 20	4
173	" " 1½ sc, 2 sc, " pairs, "	1 40	4
174	LUXEMBURG, 1872, 37½c, Stone, used, very fine,	7 00	1
175	MADEIRA, 1869, 120r, Blue, " fine,	3 00	1
176	" " 50r, Green, " "	9 00	1
177	" 1868, 80r, Orange, " creased,	12 00	1
178	MEXICO, GUADALAJORA, 1867, 4r, Rose on Wove, used, fine,	12 00	1
179	" 1884, 1p. Blue on Wove, used, fine,	2 50	1
180	NORTH BORNEO, 1893, unused set, 1 to 24c, fine,	1 39	9
181	PERSIA, 1876, 1sh, 2sh, unused, blocks, perf, 13,	4 60	8
182	" " 1sh, " pair, "	2 00	2
183	" " 2sh, pair, and Set Officials unused,	57	6
184	PHILIPPIN ISLANDS, 1854, 10c, Carmine, unused, very fine,	12 50	1
185	POLAND, 1860, 10k, Blue and Rose, used, fine,	1 25	1
186	PORTUGAL, 1855, 50r, and 100r, unused, fine,	3 25	2
187	" 1894, 5 to 100r, unused,	1 50	9
188	RUSSIA, 1845, 5k, Blue Envelope, cut square, unused,	3 00	1
189	SCHLESWIG, 1850, 1s, Blue, unused, cut close at left,	5 00	1
190	SIAM, 1883, Complete Set, the 1 sa. unused,	1 30	5
190a.	SOMALI COAST, 1894, 1c to 1 fr, unused fine,	1 33	11
191.	" " " 5 frs, " "	1 75	1
192.	SWITZERLAND BASLE, 1845, 2½r, very fine used,	35 00	1
193.	TUSCANY, 1853, 9c, Violet. Very fine used copy,	25 00	1
194.	TURKEY, 1876, 5 pi. blue, used fine,	1 00	1
195.	WURTEMBERG, 1851, 18k Violet Paper used, trimmed,	6 50	1
196.	" " " Blue, slightly damaged,	10 00	1
197.	ZULULAND, 1890, 5 sh, Rose used on cover, very fine,	20 00	1
198.	UNITED STATES, 1893, 1c to \$5.00, unused fine,	31 82	16
199.	WESTERN AUSTRALIA, 1882-93. Nice used lot,	1 01	13
200.	ST. CHRISTOPHER, perf. C. A. 1d, Rose 2½, Blue 4d Grey, used fine,	1 15	3



A FEW GOOD THINGS.

- U. S. Envelope, 1853, 6c., green, *used*.
" " " 10c., " "
" " entire, new, with Wells, Fargo & Co.
Frank.
Azores, 1868, 50 r., new.
" " 100 r., "
Baden, 1861, 6 kr., "
" " 9 kr., "
Bavaria, 1850, 12 kr., "
" " 18 kr., "
Bremen, 1855, 7 gr., "
British Columbia, 2½d., *used*.
Cape of Good Hope, 4d., wood block.
Dutch Indies, 1868, 10c., new.
" " 1874, unpaid, 5c., new.
Portugal, 1871, 240 reis, *used*.
Netherlands, 1872, 2 g., 50c.
-

Any of the above, and hundreds of others of similar grade, at 25 per cent. discount from 56th ed. Catalogue.

Our own **Standard Catalogue** of the Postage Stamps of the World complete to 1896; every Stamp illustrated.

Pocket size, only 25 cents.

Post free to any part of the World.

Our Prices are from 10 to 50 per cent. lower than Scott's 56th edition.

INTERNATIONAL STAMP CO.,

P. O. Box 563.

MONTREAL, Canada.

F. W. WURTELE, MANAGER.

Collector since 1865. Dealer since 1872.

President Montreal Stamp Collector's Club 1893 and 1894.

PRICE LISTS FREE.

Bills executed to best advantage at Auction-Sale of Montreal Stamp Collector's Club, without charge, by

INTERNATIONAL STAMP CO.

APPROVAL SHEETS.

I CAN SUPPLY

GOOD APPROVAL SHEETS

— OF —

Foreign Postage & Canadian Revenue Stamps

TO ANYONE SENDING SATISFACTORY REFERENCES.

PRICES AND DISCOUNTS VERY REASONABLE.

My stock of CANADIAN REVENUES is very large. Will be glad to receive Want Lists, and accept exchange.

(30 Varieties Can. Revenue, 33c.) COLLECTIONS BOUGHT.

A. E. LABELLE,

212 ST. HUBERT STREET, MONTREAL, CANADA.

EDWARDS'S

Philatelic Press List & Advertiser

— OF —

PHILATELIST'S SUPPLIES.

No. 1 is out. No Collector, Advertiser, or Publisher should be without a copy. Sent post free on receipt of address.

JOHN EDWARDS,

PHILATELIC PRESS AGENT,

No. 50 LATOUR STREET,

MONTREAL, CANADA.

