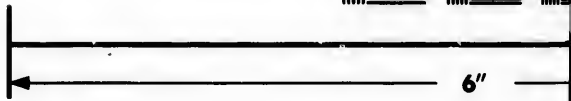
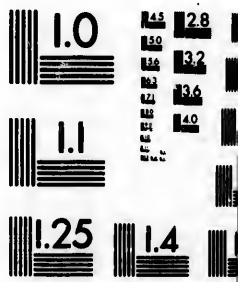
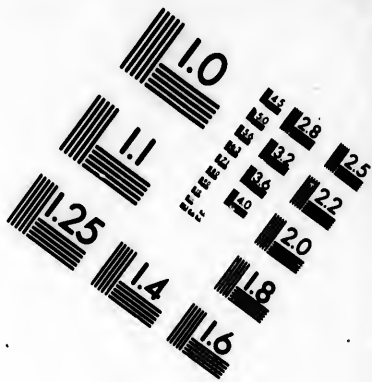


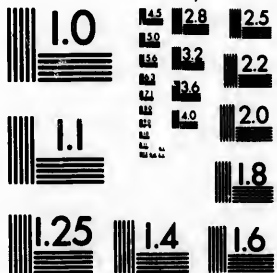
**IMAGE EVALUATION
TEST TARGET (M)**



**Photographic
Sciences
Corporation**



**IMAGE EVALUATION
TEST TARGET (MT-3)**



**Photographic
Sciences
Corporation**

23 WEST MAIN STREET
WEBSTER, N.Y. 14590
(716) 872-4503

8 25
22

**CIHM/ICMH
Microfiche
Series.**

**CI
Co
mi**



Canadian Institute for Historical Microreproductions / Institut canadien de microreproductions historiques

51

© 19

MH
e

CIHM/ICMH
Collection de
microfiches.



microreproductions / Institut canadien de microreproductions historiques

1984

Technical and Bibliographic Notes/Notes techniques

The institute has attempted to obtain the best original copy available for filming. Features of this copy which may be bibliographically unique, which may alter any of the images in the reproduction, or which may significantly change the usual method of filming, are checked below.

L'Institut a tenté d'obtenir le meilleur exemplaire original disponible pour le filmage. Les caractéristiques de cet exemplaire qui peuvent être bibliographiquement uniques, qui peuvent modifier les images dans la reproduction, ou qui peuvent modifier de façon importante la méthode habituelle de filmage, sont indiquées ci-dessous.

- Coloured covers/
Couverture de couleur
- Covers damaged/
Couverture endommagée
- Covers restored and/or laminated/
Couverture restaurée et/ou pelliculée
- Cover title missing/
Le titre de couverture manque
- Coloured maps/
Cartes géographiques en couleur
- Coloured ink (i.e. other than blue or black)/
Encre de couleur (i.e. autre que bleue ou noire)
- Coloured plates and/or illustrations/
Planches et/ou illustrations en couleur
- Bound with other material/
Relié avec d'autres documents
- Tight binding may cause shadows or distortion along interior margin/
La reliure serrée peut causer de l'ombre ou de la distorsion le long de la marge intérieure
- Blank leaves added during restoration may appear within the text. Whenever possible, these have been omitted from filming/
Il se peut que certaines pages blanches ajoutées lors d'une restauration apparaissent dans le texte, mais, lorsque cela était possible, ces pages n'ont pas été filmées.
- Additional comments:/
Commentaires supplémentaires:

-
-
-
-
-
-
-
-
-
-
-

This item is filmed at the reduction ratio checked below/
Ce document est filmé au taux de réduction indiqué ci-dessous.

10X		14X		18X		22X	
10X		16X		20X		22X	✓

Graphic Notes/Notes techniques et bibliographiques

best
of this
ue,

change
below.

L'Institut a microfilmé le meilleur exemplaire qu'il lui a été possible de se procurer. Les détails de cet exemplaire qui sont peut-être uniques du point de vue bibliographique, qui peuvent modifier une image reproduite, ou qui peuvent exiger une modification dans la méthode normale de filmage sont indiqués ci-dessous.

Coloured pages/
Pages de couleur

Pages damaged/
Pages endommagées

Pages restored and/or laminated/
Pages restaurées et/ou pelliculées

Pages discoloured, stained or foxed/
Pages décolorées, tachetées ou piquées

Pages detached/
Pages détachées

black)/
e ou noire)

Showthrough/
Transparence

Quality of print varies/
Qualité inégale de l'impression

Includes supplementary material/
Comprend du matériel supplémentaire

distortion

Only edition available/
Seule édition disponible

bre ou de la
ure

Pages wholly or partially obscured by errata
slips, tissues, etc., have been refilmed to
ensure the best possible image/
Les pages totalement ou partiellement
obscurcies par un feuillet d'errata, une pelure,
etc., ont été filmées à nouveau de façon à
obtenir la meilleure image possible.

on may
ossible, these

nes ajoutées
dans le texte,
pages n'ont

checked below/
on indiqué ci-dessous.

X		22X		24X		26X		28X		30X		32X
			✓									
		20X		24X		28X		32X				

The copy filmed here has been reproduced thanks to the generosity of:

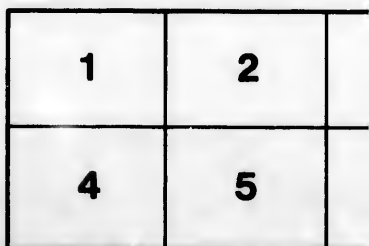
Library of the Public
Archives of Canada

The images appearing here are the best quality possible considering the condition and legibility of the original copy and in keeping with the filming contract specifications.

Original copies in printed paper covers are filmed beginning with the front cover and ending on the last page with a printed or illustrated impression, or the back cover when appropriate. All other original copies are filmed beginning on the first page with a printed or illustrated impression, and ending on the last page with a printed or illustrated impression.

The last recorded frame on each microfiche shall contain the symbol \rightarrow (meaning "CONTINUED"), or the symbol ∇ (meaning "END"), whichever applies.

Maps, plates, charts, etc., may be filmed at different reduction ratios. Those too large to be entirely included in one exposure are filmed beginning in the upper left hand corner, left to right and top to bottom, as many frames as required. The following diagrams illustrate the method:



L'exe
géné

Les in
plus r
de la
conf
filma

Les e
papier
par le
derni
d'imp
plat.
origin
premi
d'imp
la der
empr

Un de
derni
cas: l
symp

Les c
filmé
Lorsq
repro
de l'a
et de
d'ima
illustr

ed thanks

L'exemplaire filmé fut reproduit grâce à la
générosité de:

La bibliothèque des Archives
publiques du Canada

quality
legibility
the

Les images suivantes ont été reproduites avec le
plus grand soin, compte tenu de la condition et
de la netteté de l'exemplaire filmé, et en
conformité avec les conditions du contrat de
filmage.

are filmed
ng on
d impres-
e. All
ng on the
mpres-
printed

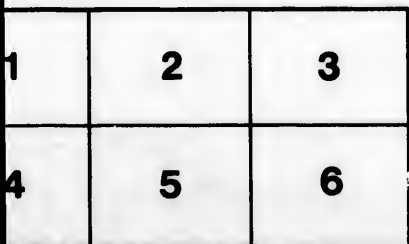
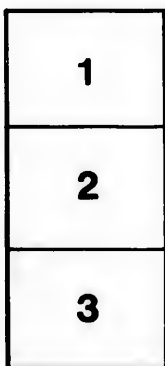
Les exemplaires originaux dont la couverture en
papier est imprimée sont filmés en commençant
par le premier plat et en terminant soit par la
dernière page qui comporte une empreinte
d'impression ou d'illustration, soit par le second
plat, selon le cas. Tous les autres exemplaires
originaux sont filmés en commençant par la
première page qui comporte une empreinte
d'impression ou d'illustration et en terminant par
la dernière page qui comporte une telle
empreinte.

iche
"CON-
END"),

Un des symboles suivants apparaîtra sur la
dernière image de chaque microfiche, selon le
cas: le symbole → signifie "A SUIVRE", le
symbole ▽ signifie "FIN".

d at
ge to be
ned
left to
e as
ate the

Les cartes, planches, tableaux, etc., peuvent être
filmés à des taux de réduction différents.
Lorsque le document est trop grand pour être
reproduit en un seul cliché, il est filmé à partir
de l'angle supérieur gauche, de gauche à droite,
et de haut en bas, en prenant le nombre
d'images nécessaire. Les diagrammes suivants
illustrent la méthode.



P.P.

Shortt

F.

1060.55

083

NEW



* HOMES

J.A. 749

FREE

22-5-25



* FARMS

ALBERTA



AND

SASKATCHEWAN

WESTERN CANADA.

FREE INFORMATION FROM

OSLER, HAMMOND & NANTON

LAND DEPARTMENT,

381 MAIN STREET, WINNIPEG, MANITOBA.

THE
CALGARY & EDMONTON
RAILWAY COMPANY

HAS

2,000,000 ACRES

Of Odd Sections in the Territory shown
colored Red on within Map, lying along
the Eastern Slope of the Rocky
Mountains, consisting of

Fine Agricultural Land

IN

ALBERTA,

CANADIAN NORTH-WEST.

The Even-numbered Sections are held by the
Dominion Government as

FREE HOMESTEADS

FOR

ACTUAL SETTLERS.

The Odd Sections adjoining are for sale by
the Company, without cultivation or residential
conditions, at **\$2.50 per acre upwards**.
Terms of payment, **ONE-TENTH Cash**, and
the balance in **nine annual payments**, with
interest at six per cent.

Ten cents per acre payable to Government for
cost of survey will be added in each case. This
amount will be payable with final instalment of
purchase money, and without interest.

OSLER, HAMMOND & NANTON

LAND DEPARTMENT,

381 MAIN STREET, WINNIPEG, MAN.

THE
Qu'Appelle, Long Lake,
AND
Saskatchewan
Railroad Company

— HAS —

1,500,000 ACRES

Of Odd-Numbered Sections in the Districts
(colored red on the within map)
lying between

REGINA

THE CAPITAL CITY OF THE CANA-
DIAN NORTHWEST,

— AND —

PRINCE ALBERT

There are still a number of Even-numbered
Sections held open by the Dominion
Government as

FREE HOMESTEADS

— TO —

ACTUAL SETTLERS.

The odd Sections adjoining are for Sale by
the Company, without cultivation or residential
conditions, at **\$2.50 per acre upwards.**
Terms of payment, **One-Tenth Cash**, and the
balance in **Nine Annual Payments**, with
interest at six per cent.

Ten cents per acre payable to Government for
cost of survey will be added in each case. This
amount will be payable with final instalment of
purchase money, and without interest.

OSLER, HAMMOND & NANTON

LAND DEPARTMENT,

381 MAIN STREET, WINNIPEG, MAN.

HOW TO REACH THESE LANDS.

Parties from Ontario and the Eastern Provinces of the Dominion can purchase tickets from any of the Canadian Pacific Railway Stations or Ticket Agents direct to

Calgary, Olds or McLeod

Stations on the Calgary and Edmonton Railway, or to

PRINCE ALBERT, DUCK LAKE,

Or any Station on the Q. L. L. & S. Railroad, and get the benefit of the Settlers' Immigrant Rates.

Parties from the United States can purchase Regular Tickets to Gretna in Manitoba, and from that point get the Settlers' Immigrant rate to any of the above Stations.

CUSTOMS.

In the Customs Tariff of Canada, Item 707, Schedule "C," Free Goods (quoted below) shows what articles a Bona Fide settler may bring into Canada free of duty.

707. "Settlers' effects, viz., wearing apparel, household furniture, professional books, implements and tools of trade, occupation or employment, which the settler has had in actual use for at least six months before removal to Canada, musical instruments, domestic sewing machines, live stock, carts and other vehicles and agricultural implements in use by the settler for at least one year before his removal to Canada, not to include machinery, or articles imported for use in any manufacturing establishment, or for sale; provided that any dutiable article entered as settlers' effects may not be so entered unless brought with the settler on his first arrival, and shall not be sold or otherwise disposed of without payment of duty, until after two years actual use in Canada; provided also, that under regulations made by the Minister of Customs, live stock, when imported into Manitoba or the Northwest Territories by intending settlers, shall be free, until otherwise ordered by the Governor in Council."

All who desire to settle on land along either of these Railways should write to

OSLER, HAMMOND & NANTON

LAND DEPARTMENT,

381 MAIN STREET, WINNIPEG, MAN.,

Before leaving home, so that full information may be given.

presents surface to the mountains

NUM in the east and

PIN stables, mounta

COA tries, is feet this the fact can be supply

THE will gro

THE of the weather during up on e

CAT ROU under ranges highest dition tionally finest st

Owin tory, th suit his can hor and hav east an round, or two

If he of the can get ranges The lib in nin offered a good

Special attention is invited to the McLEOD, MINNECOTA ENERGY and other Districts

ALBERTA

presents a diversified and picturesque appearance. The surface rolling from undulating open prairie on the east to the partially timbered foot hills and peaks of the Rocky Mountains on the west.

NUMEROUS STREAMS of pure water abounding in fish rise in the mountains and foot hills and run east and north through this territory.

PINE AND SPRUCE timber, suitable for houses, stables, etc., is easily obtainable in the foot hills and mountain valleys on western limit of tract.

COAL, the fuel of the future in this as in other countries, is found cropping out in seams from two to twelve feet thick on nearly all streams. And this, coupled with the fact that coal in car lots shipped from the big mines can be obtained at railway stations, insures settlers a good supply of cheap fuel.

THE SOIL is a rich loam, with a clay subsoil that will grow anything suitable to the climate.

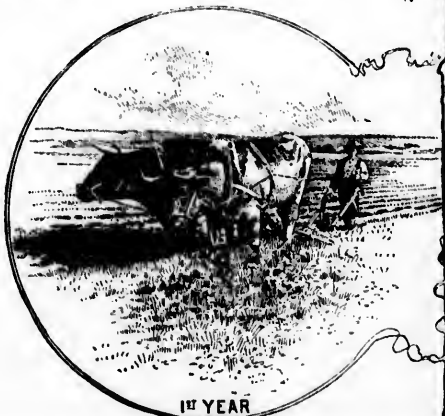
THE GRASS IS LUXURIANT up to the crown of the highest foot hills, and during the bright autumn weather it gradually cures, and furnishes splendid feed during the winter. It is practically well cured hay stand-up on end.

CATTLE GRAZE OUT ALL THE YEAR ROUND. The fact that cattle, which have never been under cover of any kind, are shipped direct from these ranges to the English market, where they command the highest prices current, proves conclusively that the condition of climate, pasturage, water, etc., must be exceptionally good. It is an undisputed fact that Alberta is the finest stock raising country in the world.

Owing to the varied nature of the surface of this territory, the intending settler or investor can select land to suit his own ideas. If he inclines to grain farming he can homestead and buy even and odd-numbered sections, and have a field two miles north and south, by one mile east and west, with a sixty-six foot road allowance all round, every foot of it can be ploughed in furrows one or two miles long to suit his fancy.

If he inclines to mixed farming he can locate in some of the numerous valleys among the foot hills where he can get bottom or valley land for cultivation, and upland ranges in the surrounding hills for horses, cattle or sheep. The liberal terms of one-tenth in cash, and the balance in nine annual payments, with interest at 8 per cent., offered by the Company, gives fathers of growing families a good chance to settle their children around them.

Special attention is invited to the McLEOD,
PINCHER CREEK and OLDS Districts.



1ST YEAR

Saskatchewan.

SURFACE. Gently undulating prairie, rolling open prairie with lakes and ponds, rolling prairie interspersed with bluffs of poplar, high rolling country, portions of which are heavily timbered with spruce, jack pine, etc.

CLIMATE similar to that of Manitoba, summer days long and bright, lengthening as you go north. The settlers on the North Saskatchewan enjoy 18 hours sunshine in the long days in summer. Winter days are cold, clear and calm. Tornadoes and cyclones unknown.

SOIL. Clay loam to sand loam, with rich clay to sandy subsoil. As cultivation goes north it has been found that the rich sandy loams return quicker and better crops than the heavy clays; grain ripens earlier, with equally as good a berry, and does not throw such an immense growth of straw as the heavy clays, and it is much easier to work.

WATER. The country is well watered; every one cannot locate on the banks of a running stream, but any one can get a plentiful supply of good water by digging a few feet for it.

FUEL and BUILDING MATERIAL. There is practically none on the plains. There are some scrubby trees along rivers, streams and coulees. To the north there are bluffs of poplar, ample for firewood, fence rails, etc. Further north, spruce and jack pine, and the great forests along the North Saskatchewan are reached. Firewood is worth about \$1.50 per cord. The large lumber mills on the North Saskatchewan supply building material as cheaply as in the most favored parts of Manitoba.

There are miles of coal outcrop on the North Saskatchewan.

WILD FRUITS, such as red plums, cherries, raspberries, strawberries, gooseberries, red and black currants, cranberries and saskatoons grow wild in the bluffs and sheltered valleys on the banks of rivers, streams and coulees.

FISH. White and jack fish are to be found in Long Lake, Qu'Appelle and both Saskatchewan, and trout in spring creeks running into these rivers.

GAME. Starting on the plains in the south and heading north, the following birds and animals will be found: Prairie chicken, partridge, duck, fox, badger, coyotes, mink, muskrat, beaver, otter, martin, fisher, rabbit, bear, deer, elk and moose.



3rd YEAR

A
Home
any t

Es
Distri
desire
or the
for se
to ma

U
ways
1.
settle
with
2.
actua
next
year
year
3.
year
addit
if rest
of ent
home

Le
18, rs
Ca
r 1 w
Calga
Re
Ba
37 to 3
4th M
Pr
J. Mc
Qu
Stever
To
and M
transa
Sw
to 6 w

To

A
squa
F
giver
etc.

an.

rolling open interspersed portions of pine, etc.

summer days h. The settlers sunshine e cold, clear n.

lay to sandy s been found better crops with equally an immense much easier

; every one am, but any by digging a

AL. There some scrubby o the north . fence rails, and the great ched. Fire- large lumber ling material antoba. orth Saskat-

berries, rasp- ack currants, e bluffs and streams and

and in Long and trout in

th and head- ll be found : er, cayotes, rabbit, bear,



YEAR

HOMESTEAD REGULATIONS



All even numbered sections, excepting 8 and 16, are open for Homestead Entry (160 acres), by any person sole head of a family, or any male over 18 years of age.

ENTRY.

Entry may be made personally at the Local Land Office for the District in which the land to be taken is situate, or if the homesteader desires he may, on application to the Minister of the Interior, Ottawa, or the Commissioner of Dominion Lands, Winnipeg, receive authority for some one, to be named by the intending settler, near the local office, to make the entry for him. Entry fee \$10, or if cancelled land \$20.

DUTIES.

Under the present law homestead duties may be performed in three ways, to be decided on making entry:

1. 'Three years' cultivation and residence, during which period the settler may not be absent for more than six months in any one year without forfeiting the entry.

2. Residence for three years within two miles of the homestead, and actual residence in a habitable house erected upon it for three months next prior to application for patent. Ten acres must be broken the first year after entry, 15 acres additional in the second, and 15 in the third year; 10 acres to be in crop the second year, and 25 acres the third year.

3. A settler may reside anywhere for the first two years, in the first year breaking five, in the second cropping said five and breaking additional ten, also building a habitable house. The entry is forfeited if residence is not commenced at the expiration of two years from date of entry. Thereafter the settler must reside upon and cultivate his homestead for at least six months in each year for three years.

DOMINION LAND OFFICES.

(FIGURES INCLUSIVE.)

Lethbridge District—tps 1 to 12, r 1 w 4th M to B. C.; tps 13 to 18, rs 1 to 24 w 4th M. Geo. Young, Lethbridge.

Calgary District—tps 13 to 18, r 25 w 4th M to B.C.; tps 19 to 30, r 1 w 4th M to B.C.; tps 31 to 31, r 8 w 4th M to B.C. Amos Itowe, Calgary.

Red Deer District—tps 35 to 42, r 8 w 4th M to B.C.

Battleford District—tps 31 to 36, r 7 w 3rd M to r 7 w 4th M; tp 37 to 38, r 6 w 3rd M to r 7 w 4th M; tp 39 nor'ds, r 11 w 3rd M to r 7 w 4th M. E. Brokovski, Battleford.

Prince Albert District—tp 39 Nor'ds, r 13 w 2 M to 10 w 3 M. J. McTaggart, Prince Albert.

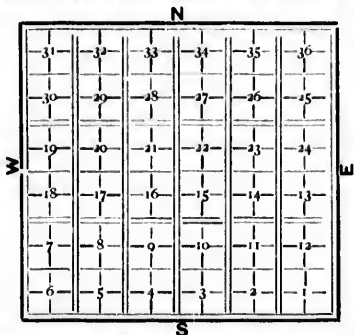
Qu'Appelle District—tp 10 to 23, r 1 to 30 w 2nd M. W. H. Stevenson, Regina.

Touchwood District—tp 21 to 31, r 1 to 30 w 2; tp 32 to 36, r 1 w 2nd M to r 6 w 3rd M; tp 37, 38, and M to r 5 w 3rd M. Business transacted at Birtle.

Swift Current District—tp 1 to 30, r 1 to 30 w 3rd M; tp 31, r 1 to 6 w 3rd M. All business transacted at Regina.

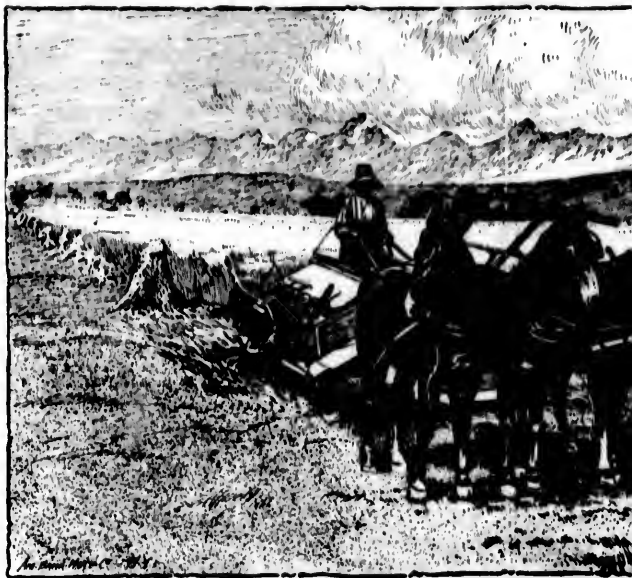
SYSTEM OF SURVEY.

Township Diagram showing the Road Allowance.



A Section contains 640 acres, and forms one mile square.

Roads.—The new system in use in the Territories gives 66 feet round each *two* sections, 1 and 12, 2 and 11, etc.



HARVESTING IN ALBERTA.

NOTE WHAT RESIDENTS

OLDS, ALBERTA, Feb. 21st, 1893.

Messrs. Osler, Hammond & Nanton.

DEAR SIRS: I have great pleasure in expressing my opinion of the many advantages which the Northwest offers for mixed farming. We have a soil that is second to none in Canada; it is a rich black loam, with clay subsoil. The grasses and hay are superior to any that I have ever met with even in the rich feeding districts in the old country, both for beef and butter. There are many beautiful running streams, abounding with numerous kinds of fish, also many fine lakes and springs, and pure water is easily obtained at a short distance by means of wells. I have been at Olds nearly two years, and the results of my farming have been quite satisfactory up to the present. This spring I intend sowing quite a patch of grain, and hope to be as successful as I was last year. I never saw any frost the last two summers to cause the least doubt but that mixed farming will be a great success around Olds.

I am, yours truly,

WM. NEWELL WOOD,

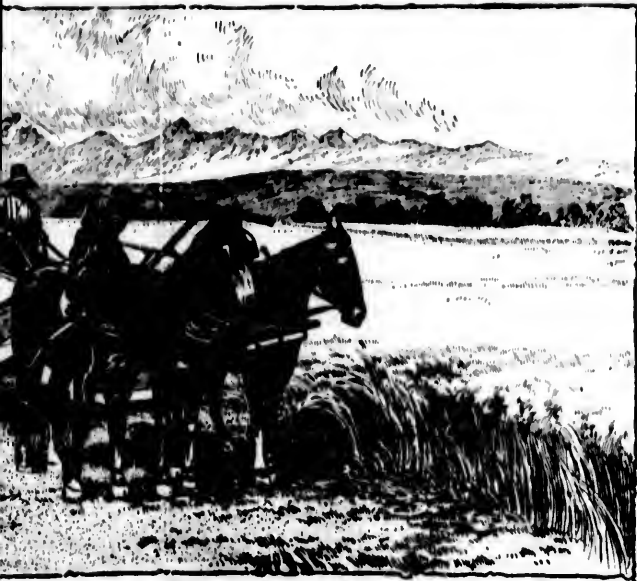
20, 32, 1 w 5.

(Late of Lincolnshire, England.)

To who

This
and I an
homes t
here tha
of fuel,
10 to 20
vegetab
best. V
lands ar
the cold
been kn
cattle o
and the
rusted t

Albe



HARVESTING IN ALBERTA.

WHAT RESIDENTS SAY.

st, 1893.

essing my
Northwest
is second
with clay
any that I
istricts in
There are
th numer-
rings, and
by means
, and the
tory up to
te a patch
last year.
cause the
great suc-

OOD,
2, 1 w5.

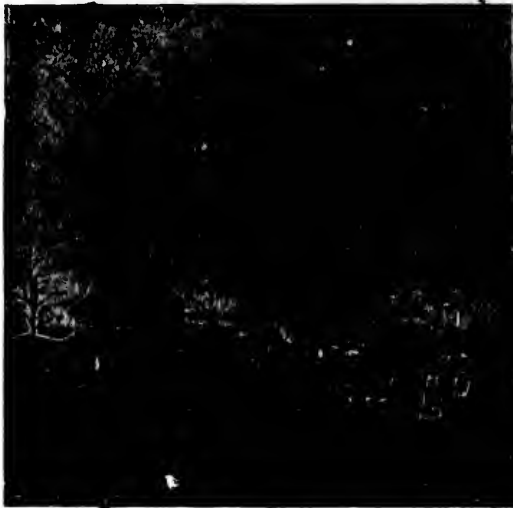
OLDS, N. W. T., Feb. 10th, 1893.

To whom it may concern :

This is to certify that I came to Alberta last March, and I am satisfied this is the country for those seeking homes to come to, as there are more natural advantages here than any place that I have seen. There is plenty of fuel, both wood and coal, pure water by digging from 10 to 20 feet, plenty of hay and excellent soil, and the vegetable crops that have been raised here are of the best. Wheat, oats and barley do well here. The grazing lands are of the best in America. We have just passed the coldest winter, it is claimed by old settlers, that has been known for many years, yet there are thousands of cattle on the ranges that have not seen a spear of hay, and they are looking remarkably well. Horses that have rustled their own food all winter are fat and sleek.

Alberta for me every time.

DAVID PHILLIPS.



A PRAIRIE HOME.

A RANCHER'S EXPERIENCE.

Editor Western World, Winnipeg.

Sir.—I came to the Northwest Territories in 1876, and having lived in Edmonton, Peace River and other districts, finally located permanently at Duck Lake in 1881, as that is in my opinion the choicest district in the Northwest for mixed farming. I have been engaged since 1882 breeding cattle and horses successfully. Number of cattle varies from 200 to 300, according to season and sales, and are of the West Highland, Aberdeen, Polled Angus, and Shorthorn breeds. My mares are of native breed crossed with Canadian stallions. Horses do wonderfully well; paw for their living in winter, and require no water, as the snow eaten with the grass supplies the drink. They require no care, and come out fat in spring. Cattle require on an average about four months' feeding in winter, but will winter well on straw, only requiring an open shed as shelter. I never stable an animal except cows milking or suckling a calf.

All breeds do well and become beef fat on natural grasses. The West Highlander and Aberdeen Angus breed sometimes become so fat that the females are useless for breeding. I have also been engaged in milling since 1887, and never knew a failure of wheat crop in this district. Late sown wheat sometimes gets caught by frost, but never so badly as not to be marketable. Mixed farming pays best. Barley, oats, peas and all kinds of roots are a sure crop and yield well. Sheep do well and the wool more than pays expense of keeping them. Never knew any disease in sheep or cattle, potatoes or grain, except a little smut in wheat. Good water can be obtained at an average of fourteen feet. Timber is plentiful for firewood, fencing and building purposes. Hay is to be had in abundance. I have not seen a farmer in this district, who is a worker and understands his business, who is not both successful and satisfied. Muscle, perseverance and common sense is about the best capital a man can have for this country.

Yours faithfully,

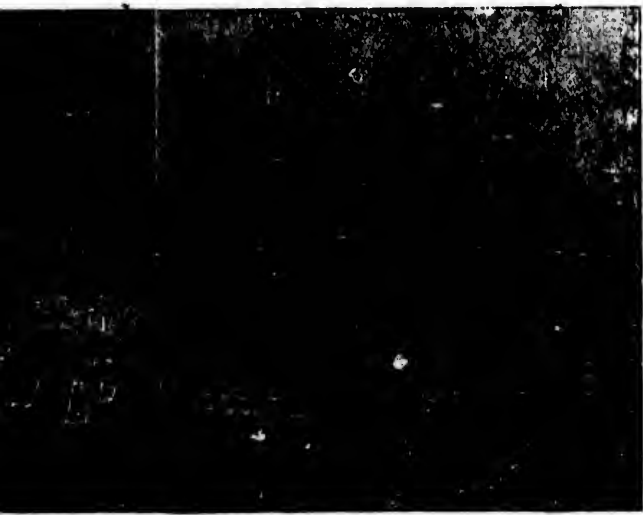
HILLYARD MITCHELL, M.L.A.

Duck Lake, 15th January, 1892.

To our

Dear S
in our
delightfu
them in
a flurry
now, an
neighbor
last seas
yield of
an acre,
acre, wh
are simp
hills to
put Irela
plentiful
the takin
excellen
the horse
forced to
paradise
meadows
limit; w
can be p
And as
farming
worked i
that we s
brother
seem to
earnestn
cast you
countries

All form



A PRAIRIE HOME.

VE.

SATISFIED SETTLERS.

(From the Western World.)

PRINCE ALBERT, N.W.T., NOV. 9, '91.

To our friends in South Dakota and elsewhere.

Dear Sirs,—You no doubt will be glad to hear from us in our new home, * * * The climate here, so far, is delightful; we have no winds, as we used to understand them in Dakota; we have had some decided frosts, with a flurry or two of snow, but the ground is perfectly bare now, and is likely to be for a month yet to come, our neighbors cattle taking care of themselves. Crops of the last season exceeded the most sanguine expectations, the yield of wheat averaging around on all sides 40 bushels an acre, oats 75 to 100 bushels, and barley 50 bushels an acre, whilst cabbage, potatoes and other garden products are simply immense, potatoes yielding at the rate of 7 hills to the bushel, and, oh, what beauties—they would put Ireland to the blush. Wood here, for fuel, is very plentiful and cheap; we are now getting all we need for the taking. Though the crops here are unsurpassingly excellent, yet judging from the number and quality of the horses, cattle and sheep we see around us, we are forced to the conclusion that this is the stockman's paradise, here being found the very best of pastures and meadows, the best of water, and natural shelter, without limit; whilst other shelter, such as barns, sheds, etc., can be put up as cheaply as in any part of the world. And as experienced, practical farmers, who have made farming our life-labor and study, who have owned and worked in good countries as well as bad, we would say that we are well pleased with our new home; and to our brother farmers in other parts of America, those who seem to be struggling against fate, we, in all sincerity, earnestness and truthfulness, advise you to come and cast your destinies in this most bountiful of bountiful countries.

Respectively yours,

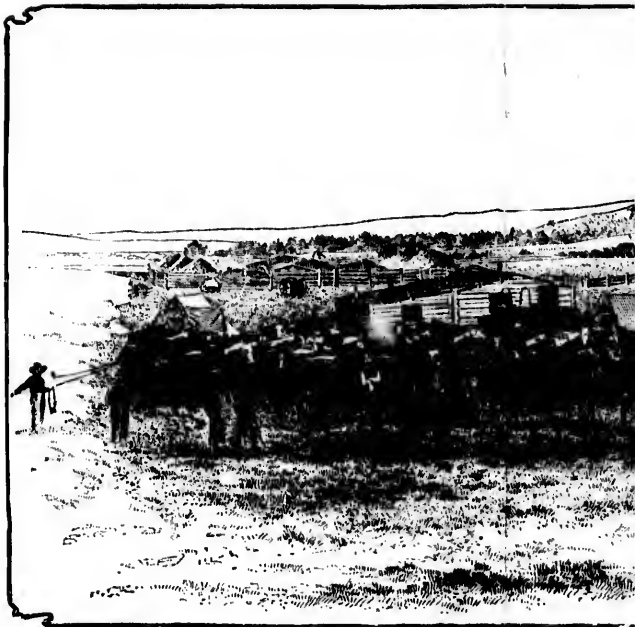
J. B. TRUSCOTT,
M. FREEMAN,
W. M. SLATTERY,

All formerly of Millard, Faulk County, South Dakota.

1876, and
other dis-
e in 1881,
ct in the
engaged
y. Num-
to season
berdeen,
es are of
Horses do
nter, and
rass sup-
e out fat
out four
on straw,
er stable
f.

natural
us breed
eless for
ng since
o in this
by frost,
ed farm-
roots are
the wool
er knew
except a
ed at an
rewood,
had in
district,
no is not
nce and
an have

M.L.A.



A RANCHER'S HOME, WESTERN CANADA

* * OLDS DISTRICT

TESTIMONY FROM NEBRASKA FARMERS.

—:O:—

SCHUYLER, NEB., December 10th, 1892.

*Messrs. Osler, Hammond & Nanton,
Winnipeg, Manitoba, Canada.*

GENTLEMEN,—Having made the tour of the North-West Territories, and while thanking you for courtesies to us, we desire to say that in the respective parts of the country we have lived, we have never seen such fine crops as we saw harvested in Alberta during the last season. The Edmonton country is especially fine, but ourselves and friends prefer the part of the country between Calgary and Edmonton, about 58 miles north of Calgary, at Olds Station, where so many from our county are settling. The soil is rich black vegetable mould, and crops were enormous all along the road. Some farmers were complaining because oats were only yielding 65 bushels to the acre, wheat 25 bushels of No. 1. The grass is excellent, and cures on the ground.

We visited the farms of Murray & Batho, and Mitchell-Innes Brothers, four miles from Olds station, and found their cattle rolling fat, and were assured that the stock had never been fed hay.

From our City of Schuyler (in Nebraska) alone, our townsmen have entered and purchased 11,000 acres, all in the vicinity of Olds Station. There is plenty of land, of excellent quality, to be entered or purchased.

Our party was composed of persons who helped to settle up the State of Nebraska in 1869, and they do not consider they had one-half the advantages offered them as your country affords.

Coal and wood are abundant everywhere, while Nebraska is entirely destitute of both.

Again thanking you for courtesies shown,

We are, yours very truly,

JOSEPH EDMONDSEN,
Late of King Township, Ontario.
MAURICE T. WILLIAMS,
Prince Edward Co., Ontario.
JAMES GADSDEN,
Late of Bedford, England.

TEST

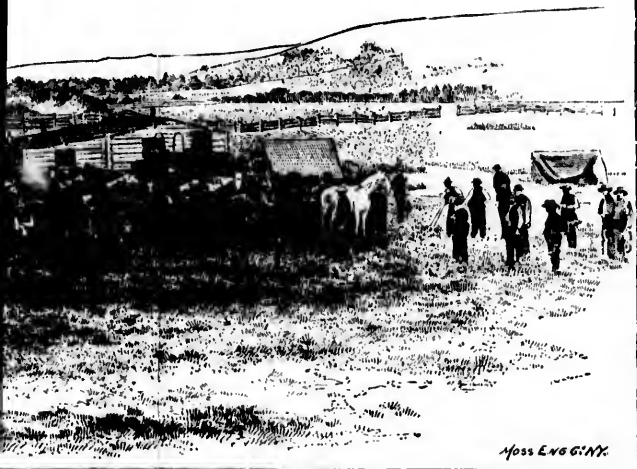
To those homes, and speak of it is strange the trouble overcome exceeding. The only ment pay

Here we pendent, good a liv we can de

There good soil prospects grows ra

Then v of the Re need wor

All tol than any a very sh time will



Moss ENG'G'NY.

ANCHER'S HOME, WESTERN CANADA.

S DISTRICT.

MERS.

10th, 1892.

Territories,
y that in the
er seen such
season. The
ends prefer
, about 58
ny from our
d, and crops
complaining
at 25 bushels

chell - Innes
attle rolling

nsmen have
Olds Station.
y purchased.

d to settle
t consider
a as your

a is entirely

, Ontario.

, Ontario.

England.

TESTIMONY FROM A RESIDENT FARMER.

—:O:—

OLDS, N.W.T., February 17th, 1893.

To those in the over-crowded districts of the East, to those seeking homes, and to those renting farms in old settled districts, I wish to speak of Alberta. We have the best country I believe in Canada, and it is strange that so good a country has been left so long unsettled, but the trouble has been to get here so far, but that difficulty is being wisely overcome, as the C. P. R. officials are lending a helping hand by giving exceedingly low rates, and, when once here, you are not taxed to death. The only tax we have to pay here is our school tax, and the Government pays the largest portion of that.

Here we work for ourselves, we are our own masters, we are independent, we get our own living with half the labor it takes to get a good a living in the East; then there is a chance here to show what we can do.

There is every natural advantage that a man wants, good climate, good soil, good water, good fuel, good markets for what we raise. The prospects of this being an agricultural country are good, as every thing grows rapidly and ripens well.

Then we have vast forests of excellent sawing timber along the foot of the Rocky Mountains, which affords labour for the poorer class who need work in the winter.

All told, I think this country affords better inducements to settlers than any country I know of, and the man that gets a home here will in a very short time more than double his money, for land here in a short time will be as staple as the wheat of to-day.

Yours truly,

GEO. CASEBEER.



FARM SCENE, NEAR PRINCE ALBERT

HORSES.

There is a splendid opening in the Foot Hill Valleys for people who understand the raising of Horses.

There is no Country in the World better adapted for the purpose.

The Climate, Water and Grass are most suitable for this branch of farming. They can feed out all the year round and mature wonderfully.

Farmers who locate in Alberta should go in for this industry.

Buy good Mares. The mares can do all necessary farm work and raise colts as well.

Good Teams of Heavy Horses sell readily in Manitoba for from \$400 to \$600, and a large number of good heavy horses will soon be required in Alberta. For years to come Manitoba and the grain growing portions of the Territory will have to buy their Horses, as they will not raise them; and there is no doubt that the European market must in the near future be supplied from this country. Many experts (army men as well as civilians,) have already visited Alberta with a view of ascertaining its capabilities, and are satisfied. The only drawback that Alberta farmers have to contend with, is the distance from the European market. Time, even if left alone, would unaided, soon change this; but up here we do not leave things to time. Live men are already at work, and we do not hesitate to say that in the future, if an Alberta farmer has a good horse to sell he will have a market for it.

What is wanted and what will sell readily are Clyde crosses and other Heavy Horses broken as colts and perfectly gentle.

This class of Horses can be raised best by men in a small way, who can handle their colts as they grow up and have them practically broken when they are old enough to work.

CATTLE.

There is already a large number of magnificent Cattle of all grades in Alberta, and the Intending Settler can obtain all he requires from among the large herds which are now running on the ranges, and which require little or no care during the winter.

Farmers cannot do better than raise good Beef Cattle.

Eastern Exporters bought in Alberta last year, and every year this trade will increase.

NOTE

In the

ISAIAH from Prince Albert. He had a crop of coarses in 1890 but intended sum but a crop as previous crop produced a commercial. Imported Du

JAS. CAN make the for May 15, 1891, tion over M- going over Prince Albert had and pic Prince Albert considerable yield being g nounce this d cattle that ha poplar grove dance of gr World.



A SCENE, NEAR PRINCE ALBERT.

NOTE WHAT RESIDENTS SAY

In the Leading Commercial and Agricultural Papers
of the Canadian Northwest.

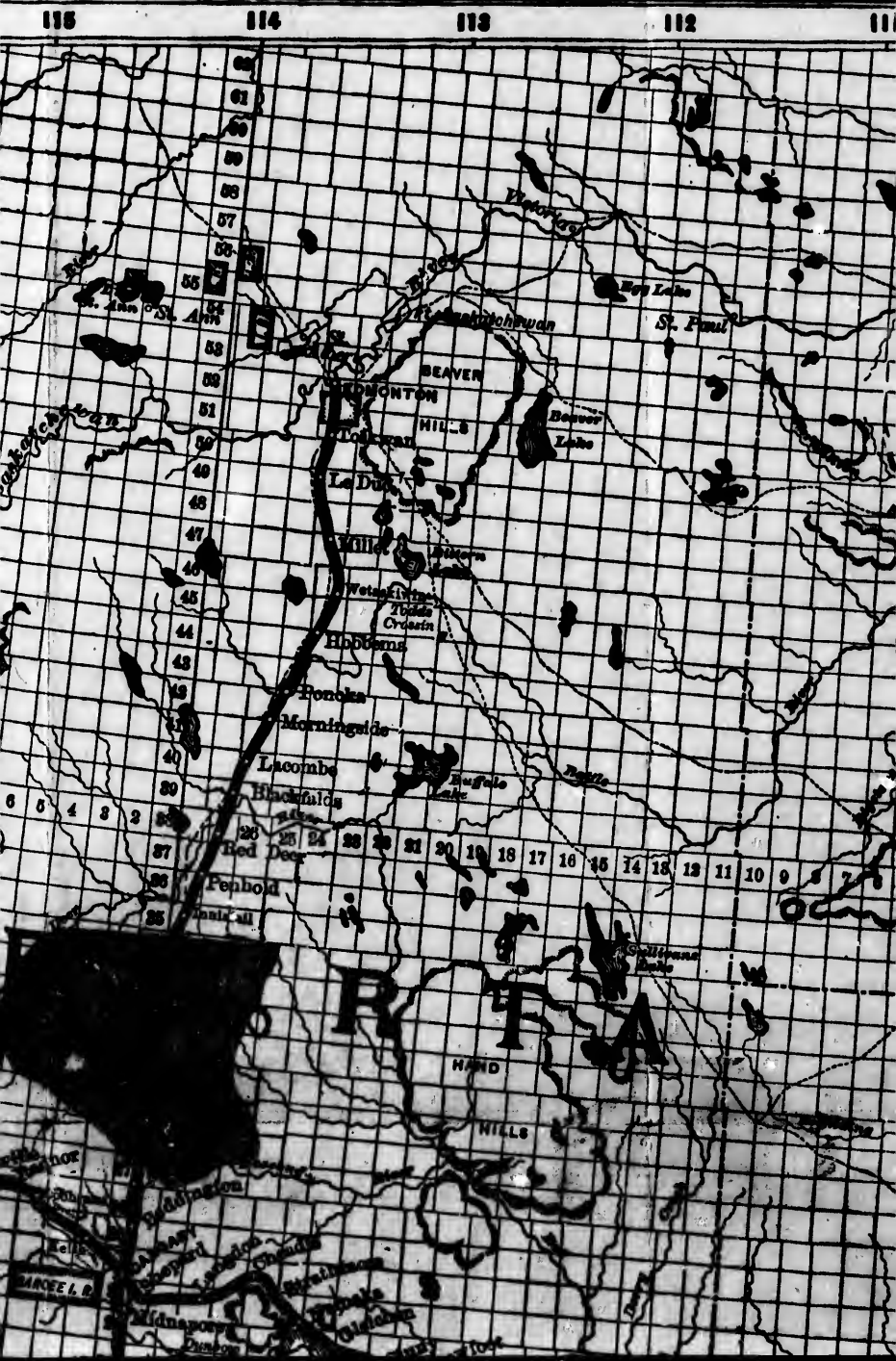
ISAIAH MCCALL, for ten years a resident, has farmed six miles from Prince Albert and raised stock, giving his attention mainly to the latter. He has found the seasons favorable and has always had a good crop of coarse grain, having given little attention to wheat. The season of 1890 he had a good volunteer crop of oats and barley. He had intended summer following the land and did not plow it in the fall, but a crop came up in the spring from seed that had fallen from the previous crop. This looked so well that it was allowed to grow, and produced a crop of 25 to 30 bushels per acre. Mr. McCall has some imported Durham cattle, and they have done well with him.—*Commercial*.

JAS. CAMERON, Prince Albert, Nov. 8, 1891, says: "I wish to make the following report for the benefit of intending settlers. On May 15, 1891, I left South Dakota and made a thorough trip of inspection over Manitoba and the Northwest, and after spending six weeks going over the principal parts, I made up my mind to locate in the Prince Albert district. I went back to Dakota and took off what crop I had and picked up (as well as a great many more) and emigrated to Prince Albert. I have now been here about two months. I have seen considerable grain threshed. I have not seen any frozen grain, the yield being good and the sample the best I ever saw in my life. I pronounce this district second to none for mixed farming. I have seen cattle that have never been fed any hay or had any shelter except the poplar groves, and they were fat and looked well. There is an abundance of grass, wood and water, and the land is good.—*Western World*.

WAY LANDS F

BALANCE I

FREE HOMESTEADS



FOR SALE AT L
IN NINE ANNUAL PAYME
S MAY STILL BE OBTAINED WITHIN EASY



AT LOW PRICE

PAYMENTS, WITH INTEREST

WITHIN EASY REACH OF STATIONS ON THE

100

107

100

105



AT LOW PRICE

L PAYMENTS, WITH INT

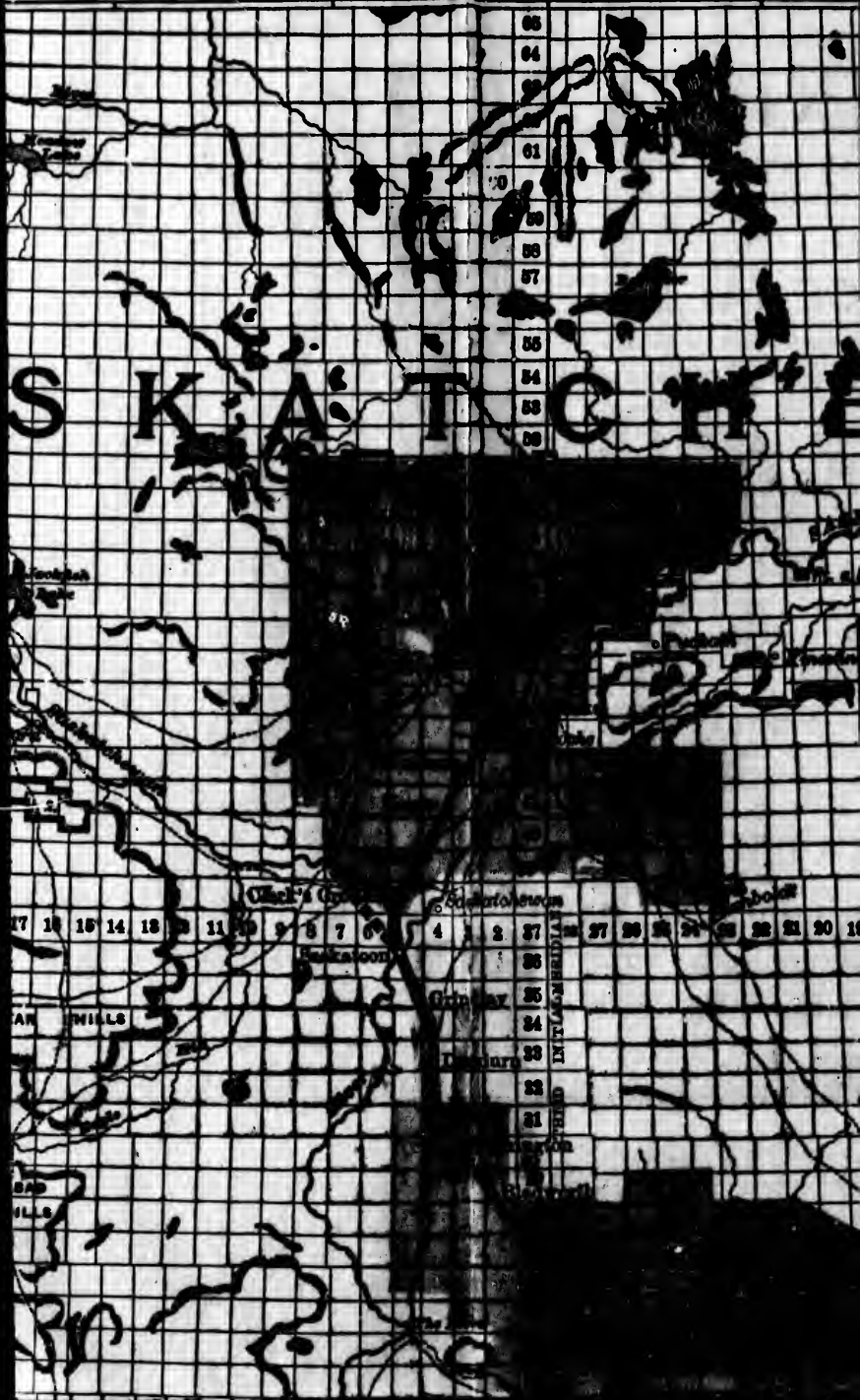
WITHIN EASY REACH OF STATIONS ON

100

107

100

100



85
84
83
82
81
80
79
78
77
76
75
74
73
72

17 16 15 14 13 12 11 10 9 8 7 6 5 4 3 2 1 0 1 2 3 4 5 6 7 8 9 10 11 12 13 14 15 16 17

WILLS

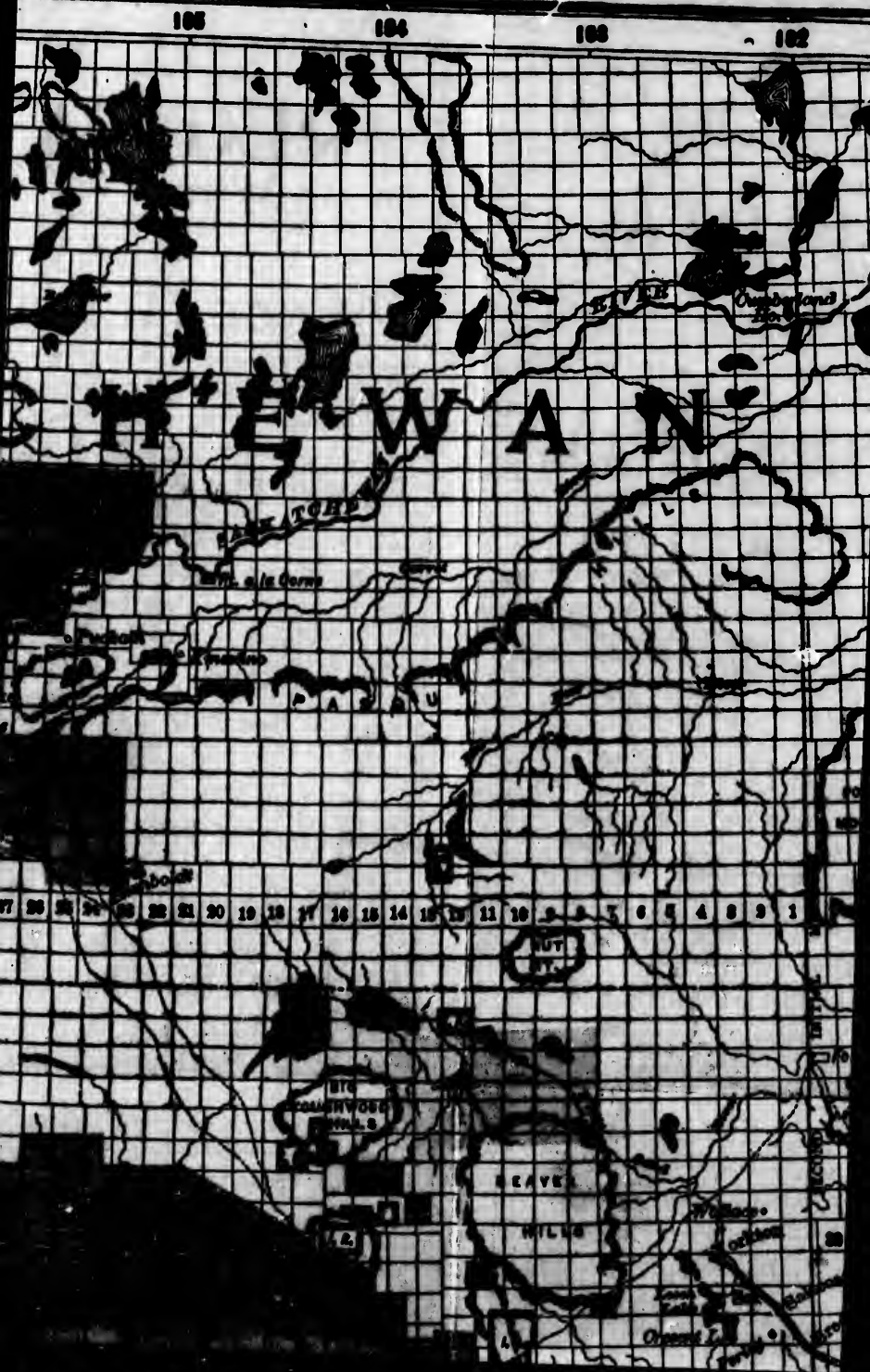
WILLS

PRICES.

TERM

WITH INTEREST AT SIX P

STATIONS ON THE C. & E. AND Q.



MS: ONE-TENTH

PER CENT.

C. L. L. & S. RAILWAYS.



CALGARY & EDMONTON

QU'APPELLATION

AND SASKATCHEWAN

LAND

IN THE TOWNSHIPS COLORED RED

FOR FULL INFORMATION
DISTRIBUTE

OSLER, HAMILTON

LAND

381 MAIN STREET

FORCUPINE
MOUNTAINS

DUCK

MOUNTAINS

15 14 13 12

20 21 20 19 18

22 21 20 19 18

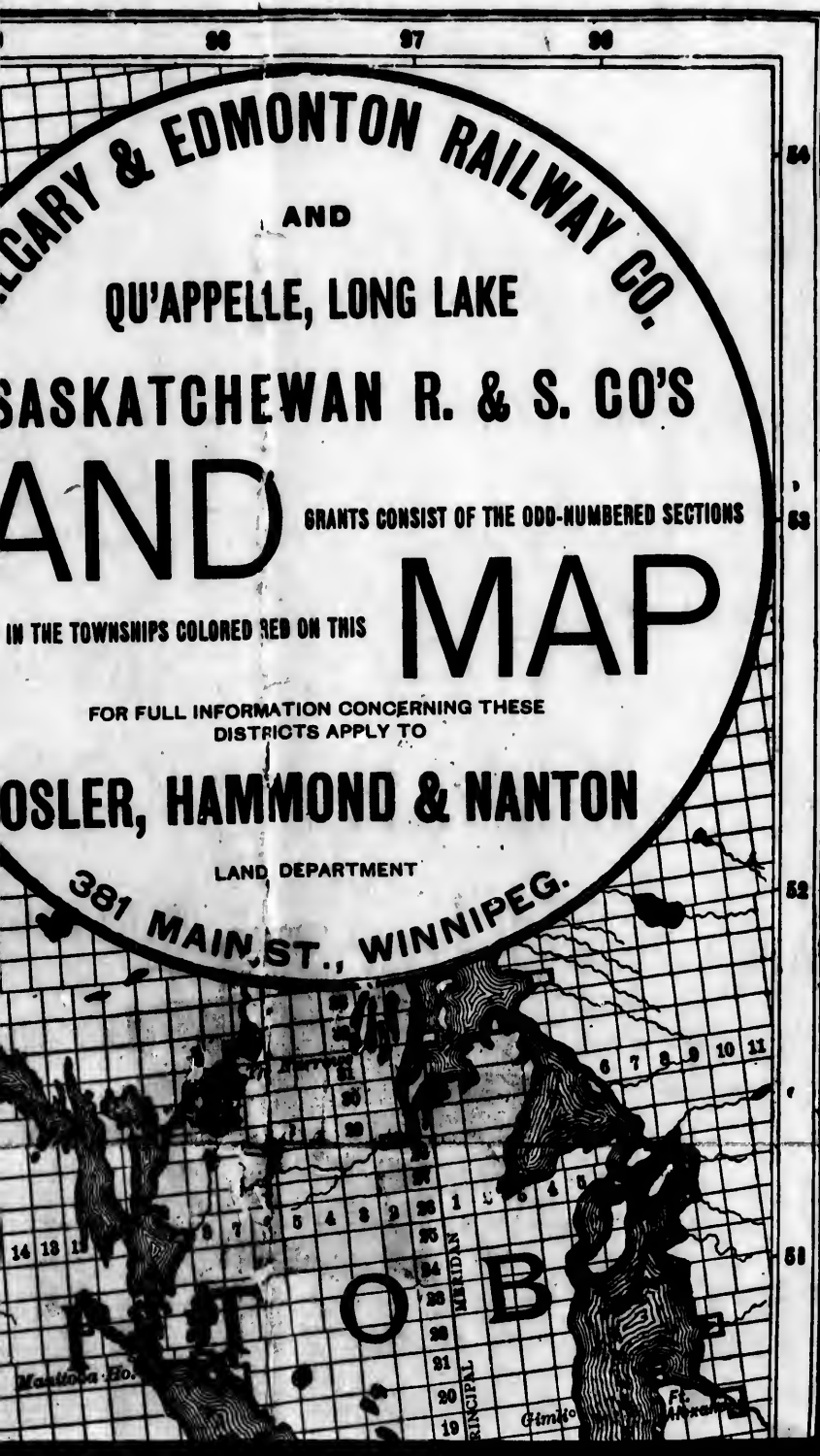
6 7

MAIN

Manitoba Ho.

ENTH CASH;

AYS.





TOWN LOTS FOR

In Edmonton, Wetaskiwin, Red
 Olds, Dewdney, High River, M
 Alberta, Duck Lake and Saskato



SCALE OF MILES

C. S. Lott, Draughtsman.

114 113 112 111

LOTS FOR SALE

skiwin, Red Deer, Innisfail,
 h River, Macleod, Prince
 and Saskatoon.



INTERNATIONAL

110

100

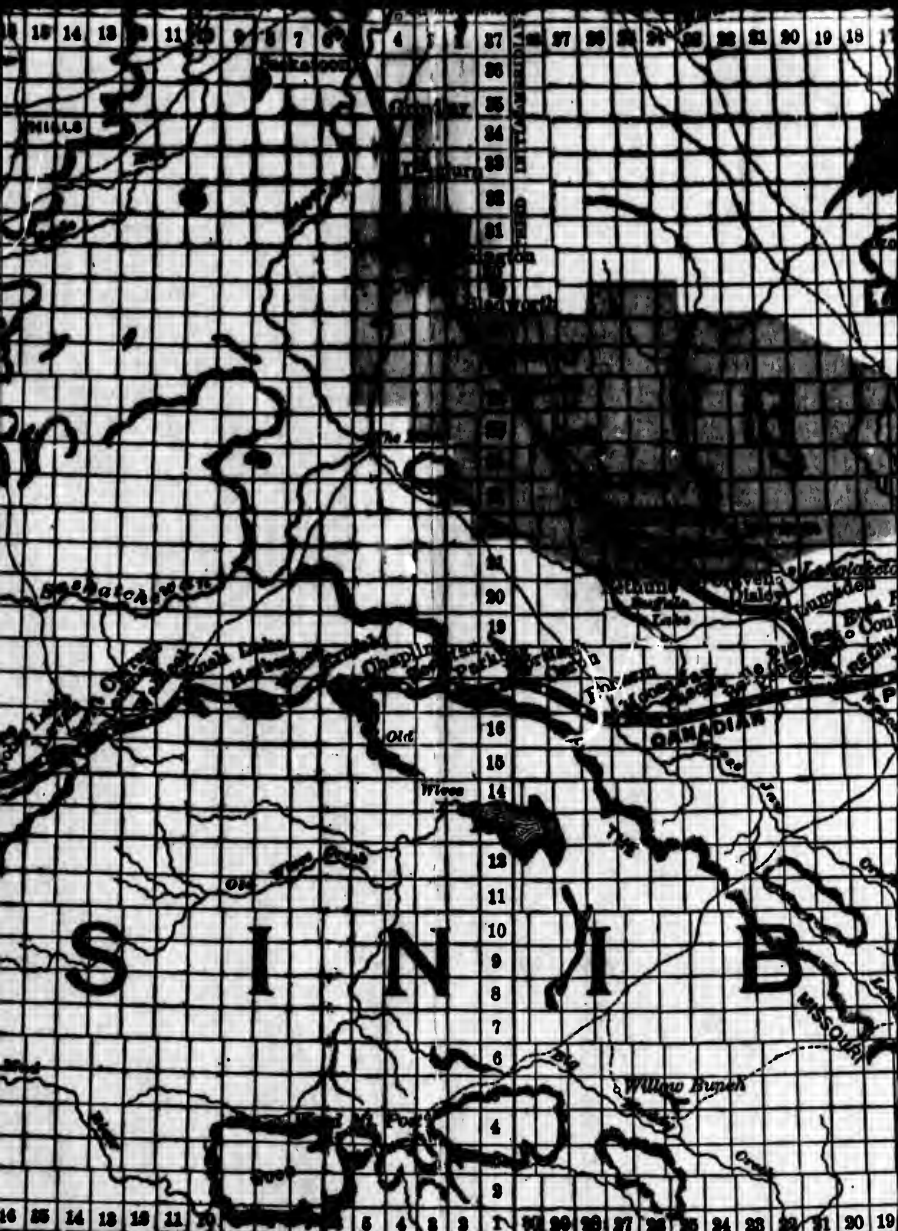
100

100

OSLER, HAMILTON

LAND

381 MAIN STREET



INTERNATIONAL BOUNDARY

102 107 108 105

HAMMOND &
 LAND DEPARTMENT,
 STREET, WINNIPEG, MA



HAMMOND &
 LAND DEPARTMENT,
 STREET, WINNIPEG, M



BOUNDARY

105 104 103 102

D & NANTON,

MENT,

WISSEMAN, MANITOBA.

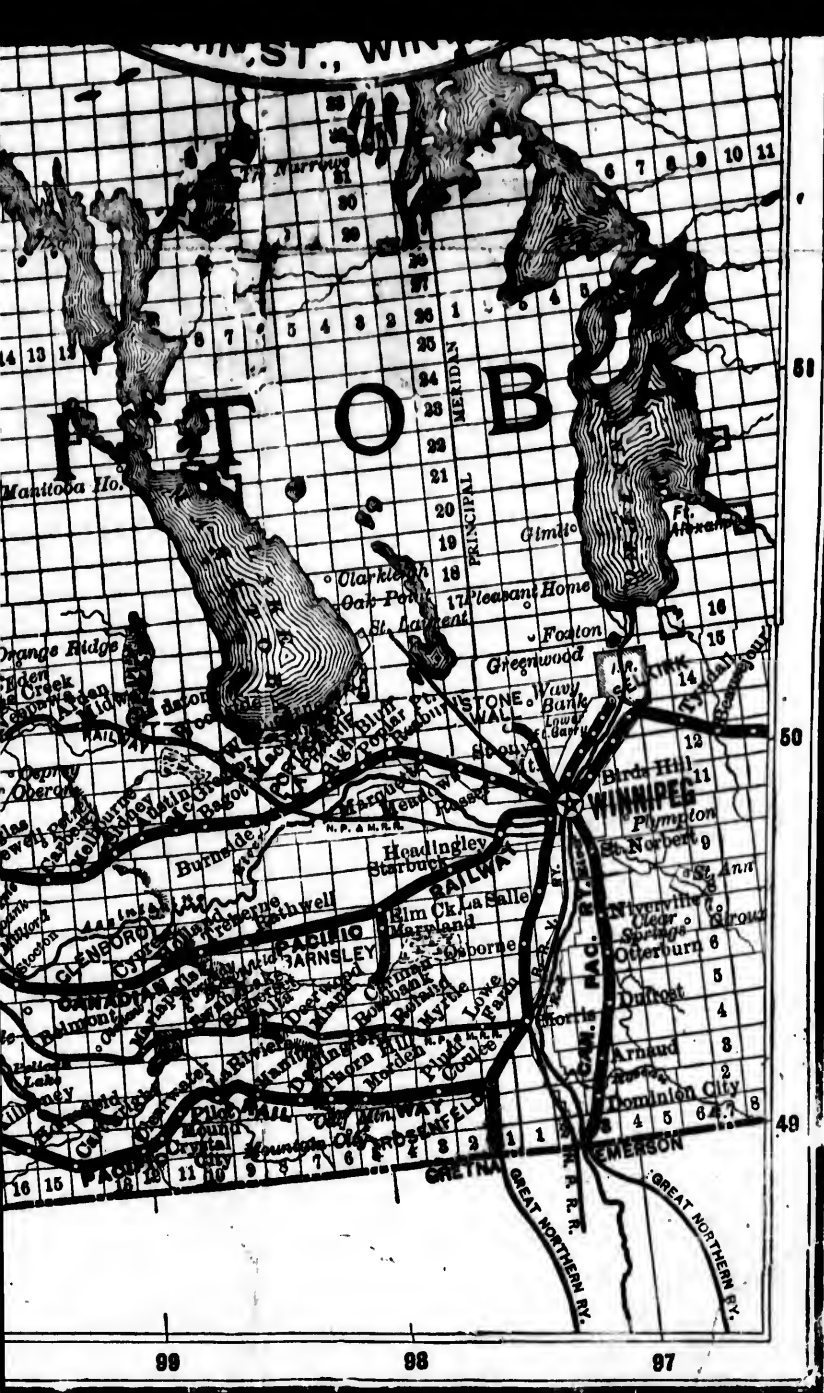


For local information concerning
Lands call

H. W. NANTON,

For local information concerning
call on our

REPRESENTATIVES at PRINCE ALBERT



Information concerning C. & N.W. Railway
Lands call on
WATSON, - Calgary, Alberta.

Information concerning Q. L. L. & S. Rd. Lands,
call on our
PRINCE ALBERT, DUCK LAKE and REGINA.

