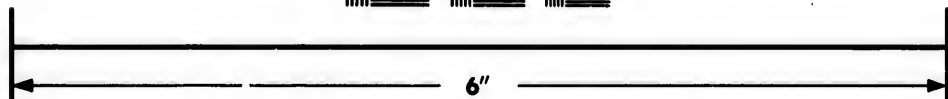
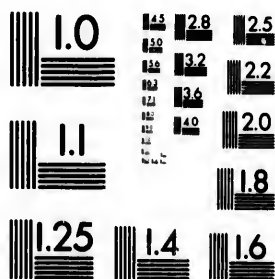


**IMAGE EVALUATION
TEST TARGET (MT-3)**



**Photographic
Sciences
Corporation**

23 WEST MAIN STREET
WEBSTER, N.Y. 14580
(716) 872-4503

2.8
2.5
2.2
2.0
1.8

**CIHM/ICMH
Microfiche
Series.**

**CIHM/ICMH
Collection de
microfiches.**



Canadian Institute for Historical Microreproductions / Institut canadien de microreproductions historiques

1.0
0.8
0.7

© 1981

Technical and Bibliographic Notes/Notes techniques et bibliographiques

The Institute has attempted to obtain the best original copy available for filming. Features of this copy which may be bibliographically unique, which may alter any of the images in the reproduction, or which may significantly change the usual method of filming, are checked below.

L'Institut a microfilmé le meilleur exemplaire qu'il lui a été possible de se procurer. Les détails de cet exemplaire qui sont peut-être uniques du point de vue bibliographique, qui peuvent modifier une image reproduite, ou qui peuvent exiger une modification dans la méthode normale de filmage sont indiqués ci-dessous.

- Coloured covers/
Couverture de couleur
- Covers damaged/
Couverture endommagée
- Covers restored and/or laminated/
Couverture restaurée et/ou pelliculée
- Cover title missing/
Le titre de couverture manque
- Coloured maps/
Cartes géographiques en couleur
- Coloured ink (i.e. other than blue or black)/
Encre de couleur (i.e. autre que bleue ou noire)
- Coloured plates and/or illustrations/
Planches et/ou illustrations en couleur
- Bound with other material/
Relié avec d'autres documents
- Tight binding may cause shadows or distortion along interior margin/
La reliure serrée peut causer de l'ombre ou de la distortion le long de la marge intérieure
- Blank leaves added during restoration may appear within the text. Whenever possible, these have been omitted from filming/
Il se peut que certaines pages blanches ajoutées lors d'une restauration apparaissent dans le texte, mais, lorsque cela était possible, ces pages n'ont pas été filmées.
- Additional comments:
Commentaires supplémentaires:

- Coloured pages/
Pages de couleur
- Pages damaged/
Pages endommagées
- Pages restored and/or laminated/
Pages restaurées et/ou pelliculées
- Pages discoloured, stained or foxed/
Pages décolorées, tachetées ou piquées
- Pages detached/
Pages détachées
- Showthrough/
Transparence
- Quality of print varies/
Qualité inégale de l'impression
- Includes supplementary material/
Comprend du matériel supplémentaire
- Only edition available/
Seule édition disponible
- Pages wholly or partially obscured by errata slips, tissues, etc., have been refilmed to ensure the best possible image/
Les pages totalement ou partiellement obscurcies par un feuillet d'errata, une pelure, etc., ont été filmées à nouveau de façon à obtenir la meilleure image possible.

This item is filmed at the reduction ratio checked below/
Ce document est filmé au taux de réduction indiqué ci-dessous.

10X	14X	18X	22X	26X	30X
<input type="checkbox"/>	<input type="checkbox"/>	<input type="checkbox"/>	<input checked="" type="checkbox"/>	<input type="checkbox"/>	<input type="checkbox"/>
12X	16X	20X	24X	28X	32X

The copy filmed here has been reproduced thanks to the generosity of:

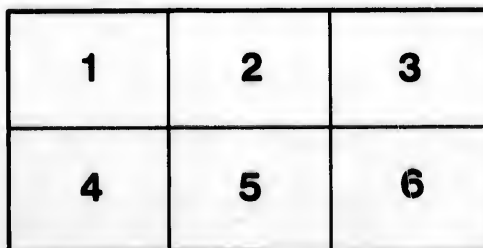
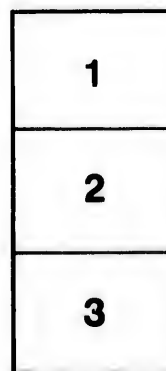
Metropolitan Toronto Library
Science & Technology Department

The images appearing here are the best quality possible considering the condition and legibility of the original copy and in keeping with the filming contract specifications.

Original copies in printed paper covers are filmed beginning with the front cover and ending on the last page with a printed or illustrated impression, or the back cover when appropriate. All other original copies are filmed beginning on the first page with a printed or illustrated impression, and ending on the last page with a printed or illustrated impression.

The last recorded frame on each microfiche shall contain the symbol \rightarrow (meaning "CONTINUED"), or the symbol ∇ (meaning "END"), whichever applies.

Maps, plates, charts, etc., may be filmed at different reduction ratios. Those too large to be entirely included in one exposure are filmed beginning in the upper left hand corner, left to right and top to bottom, as many frames as required. The following diagrams illustrate the method:



L'exemplaire filmé fut reproduit grâce à la générosité de:

Metropolitan Toronto Library
Science & Technology Department

Les images suivantes ont été reproduites avec le plus grand soin, compte tenu de la condition et de la netteté de l'exemplaire filmé, et en conformité avec les conditions du contrat de filmage.

Les exemplaires originaux dont la couverture en papier est imprimée sont filmés en commençant par le premier plat et en terminant soit par la dernière page qui comporte une empreinte d'impression ou d'illustration, soit par le second plat, selon le cas. Tous les autres exemplaires originaux sont filmés en commençant par la première page qui comporte une empreinte d'impression ou d'illustration et en terminant par la dernière page qui comporte une telle empreinte.

Un des symboles suivants apparaîtra sur la dernière image de chaque microfiche, selon le cas: le symbole \rightarrow signifie "A SUIVRE", le symbole ∇ signifie "FIN".

Les cartes, planches, tableaux, etc., peuvent être filmés à des taux de réduction différents. Lorsque le document est trop grand pour être reproduit en un seul cliché, il est filmé à partir de l'angle supérieur gauche, de gauche à droite, et de haut en bas, en prenant le nombre d'images nécessaire. Les diagrammes suivants illustrent la méthode.

ails
du
diffier
une
page

rata
)

elure,
à

1429
To the Steam Users of Canada.



**TORONTO ASSOCIATION
STATIONERY • ENGINEERS.**

PREAMBLE.

This Association shall at no time be used for the furtherance of strikes, or in any way interfering between its members and their employers in regard to wages; recognizing the identity of interests between employer and employee, not countenancing any project or enterprise that will interfere with the perfect harmony between them; neither shall it be used for political or religious purposes.

DEAR SIR:

We respectfully call your attention to the fact that we have organized in this city, the above Association, and offer you as a steam user the benefits to be derived from it. You will see by reading the above Preamble which is the base of all our laws—that we are in no way a Trades' Union, neither can we in any way become connected with any of the Trades' Unions.

THE OBJECT OF THIS ASSOCIATION IS,

- 1st. That of serving as a School of Instruction for its members.
- 2nd. That of meeting together and discussing matters theoretical and practical, pertaining to our calling.
- 3rd. That of examining Engineers and Firemen as to their proficiency, and granting graded Certificates of ability.
- 4th. That of being a medium through which Steam Users may be supplied with good and reliable Engineers.
- 5th. That of being an Association for relief in deserving cases of sickness or distress.

The meetings of this Society are largely devoted to the discussion of the practical principles, pertaining to every-day duties of those in charge of Steam Plants. By this means the experience of one is added to that of another; and all are benefitted by the interchange of opinions and experiences.

The attending the service the benefit of the Association; and help its meetings and be impossible Stationery be a fair sale such question

We believe services is to and as our morally and assist us, and his Association

Trustin ation for m

To The C
GENT
being desir
my contrib

The attention of the Steam Using Public is called to the fact that in engaging the services of a member recommended by this Society, they not only get the benefit of his individual experience, but also that of every member of the Association; as it is the primary object of this institution to educate, enlighten and help its members. The wage question is never discussed at any of our meetings and is left entirely to the employer and employee. In fact, it would be impossible to establish an equitable system of wages for the government of Stationery Engineers; as there are no two steam plants alike, and what would be a fair salary in one place might be unreasonable in another. Therefore all such questions are left to those directly interested.

We believe the best and shortest way to better remuneration for our services is to raise the quality of the goods we sell—our experience and skill—and as our Association is especially organized to elevate us mechanically, morally and socially, we take great pleasure in offering you an opportunity to assist us, and thereby benefit yourself, by becoming an Honorary Member of this Association the annual dues for which are Three Dollars

Trusting that you will view this favorably and fill up the enclosed application for membership.

We are,

Yours respectfully,

A. M. WICKENS, Pres.

ENGINEER, *Globe*.

E. H. HAWKINS, Rec.-Secy.

ENGINEER, *Telegram*.

TORONTO, 188

To The Canadian Association Stationery Engineers :

GENTLEMEN: Having a favorable impression of your organization and being desirous of aiding you. I enclose herewith the sum of \$ _____ as my contribution for Honorary membership in your Association.

