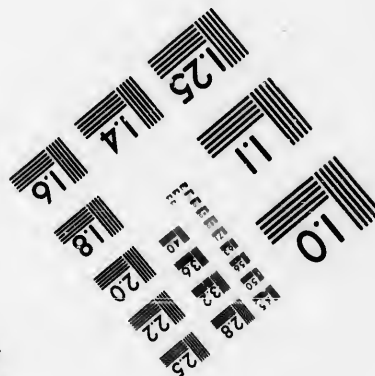
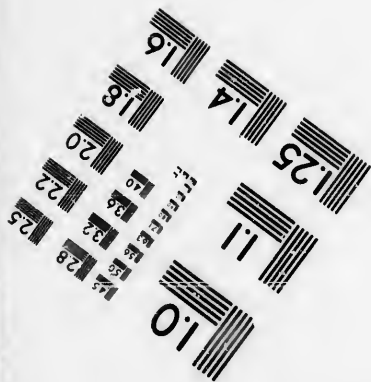
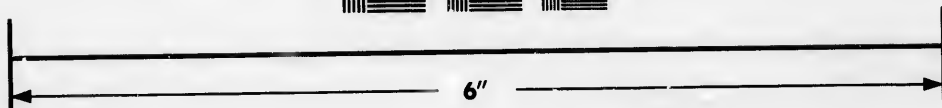
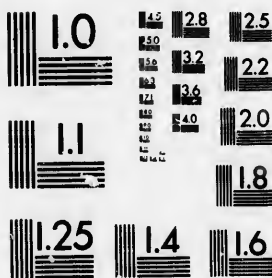


**IMAGE EVALUATION
TEST TARGET (MT-3)**



**Photographic
Sciences
Corporation**

23 WEST MAIN STREET
WEBSTER, N.Y. 14580
(716) 872-4503

15
128
32
25
36
22
20
18

**CIHM/ICMH
Microfiche
Series.**

**CIHM/ICMH
Collection de
microfiches.**



Canadian Institute for Historical Microreproductions / Institut canadien de microreproductions historiques

11
01
93
57

© 1986

Technical and Bibliographic Notes/Notes techniques et bibliographiques

The Institute has attempted to obtain the best original copy available for filming. Features of this copy which may be bibliographically unique, which may alter any of the images in the reproduction, or which may significantly change the usual method of filming, are checked below.

L'Institut a microfilmé le meilleur exemplaire qu'il lui a été possible de se procurer. Les détails de cet exemplaire qui sont peut-être uniques du point de vue bibliographique, qui peuvent modifier une image reproduite, ou qui peuvent exiger une modification dans la méthode normale de filmage sont indiqués ci-dessous.

- | | |
|--|--|
| <input type="checkbox"/> Coloured covers/
Couverture de couleur | <input checked="" type="checkbox"/> Coloured pages/
Pages de couleur |
| <input type="checkbox"/> Covers damaged/
Couverture endommagée | <input type="checkbox"/> Pages damaged/
Pages endommagées |
| <input type="checkbox"/> Covers restored and/or laminated/
Couverture restaurée et/ou pelliculée | <input type="checkbox"/> Pages restored and/or laminated/
Pages restaurées et/ou pelliculées |
| <input type="checkbox"/> Cover title missing/
Le titre de couverture manquant | <input checked="" type="checkbox"/> Pages discoloured, stained or foxed/
Pages décolorées, tachetées ou piquées |
| <input type="checkbox"/> Coloured maps/
Cartes géographiques en couleur | <input type="checkbox"/> Pages detached/
Pages détachées |
| <input type="checkbox"/> Coloured ink (i.e. other than blue or black)/
Encre de couleur (i.e. autre que bleue ou noire) | <input type="checkbox"/> Showthrough/
Transparence |
| <input type="checkbox"/> Coloured plates and/or illustrations/
Planches et/ou illustrations en couleur | <input type="checkbox"/> Quality of print varies/
Qualité inégale de l'impression |
| <input checked="" type="checkbox"/> Bound with other material/
Relié avec d'autres documents | <input type="checkbox"/> Includes supplementary material/
Comprend du matériel supplémentaire |
| <input type="checkbox"/> Tight binding may cause shadows or distortion
along interior margin/
La reliure serrée peut causer de l'ombre ou de la
distorsion le long de la marge intérieure | <input type="checkbox"/> Only edition available/
Seule édition disponible |
| <input type="checkbox"/> Blank leaves added during restoration may
appear within the text. Whenever possible, these
have been omitted from filming/
Il se peut que certaines pages blanches ajoutées
lors d'une restauration apparaissent dans le texte,
mais, lorsque cela était possible, ces pages n'ont
pas été filmées. | <input type="checkbox"/> Pages wholly or partially obscured by errata
slips, tissues, etc., have been refilmed to
ensure the best possible image/
Les pages totalement ou partiellement
obscurcies par un feuillet d'errata, une pelure,
etc., ont été filmées à nouveau de façon à
obtenir la meilleure image possible. |
| <input checked="" type="checkbox"/> Additional comments: / [Printed ephemera] [4] p.
Commentaires supplémentaires: | |

This item is filmed at the reduction ratio checked below/
Ce document est filmé au taux de réduction indiqué ci-dessous.

10X	12X	14X	16X	18X	20X	22X	24X	26X	28X	30X	32X
				<input checked="" type="checkbox"/>							

The copy filmed here has been reproduced thanks to the generosity of:

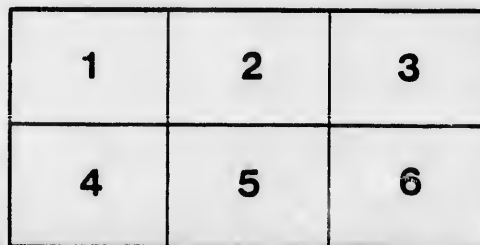
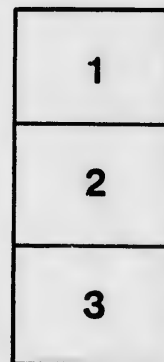
D. B. Weldon Library
University of Western Ontario
(Regional History Room)

The images appearing here are the best quality possible considering the condition and legibility of the original copy and in keeping with the filming contract specifications.

Original copies in printed paper covers are filmed beginning with the front cover and ending on the last page with a printed or illustrated impression, or the back cover when appropriate. All other original copies are filmed beginning on the first page with a printed or illustrated impression, and ending on the last page with a printed or illustrated impression.

The last recorded frame on each microfiche shall contain the symbol \rightarrow (meaning "CONTINUED"), or the symbol ∇ (meaning "END"), whichever applies.

Maps, plates, charts, etc., may be filmed at different reduction ratios. Those too large to be entirely included in one exposure are filmed beginning in the upper left hand corner, left to right and top to bottom, as many frames as required. The following diagrams illustrate the method:



L'exemplaire filmé fut reproduit grâce à la générosité de:

D. B. Weldon Library
University of Western Ontario
(Regional History Room)

Les images suivantes ont été reproduites avec le plus grand soin, compte tenu de la condition et de la netteté de l'exemplaire filmé, et en conformité avec les conditions du contrat de filmage.

Les exemplaires originaux dont la couverture en papier est imprimée sont filmés en commençant par le premier plat et en terminant soit par la dernière page qui comporte une empreinte d'impression ou d'illustration, soit par le second plat, selon le cas. Tous les autres exemplaires originaux sont filmés en commençant par la première page qui comporte une empreinte d'impression ou d'illustration et en terminant par la dernière page qui comporte une telle empreinte.

Un des symboles suivants apparaîtra sur la dernière image de chaque microfiche, selon le cas: le symbole \rightarrow signifie "A SUIVRE", le symbole ∇ signifie "FIN".

Les cartes, planches, tableaux, etc., peuvent être filmés à des taux de réduction différents. Lorsque le document est trop grand pour être reproduit en un seul cliché, il est filmé à partir de l'angle supérieur gauche, de gauche à droite, et de haut en bas, en prenant le nombre d'images nécessaire. Les diagrammes suivants illustrent la méthode.

THE
BACONIAN CLUB

LONDON,

CANADA.



Engraved by John & Lewis & Co. Boston, U.S.A. No 60 A

Second Annual Dinner

(AT HAWTHORN'S)

THURSDAY, 22ND APRIL, 1886.



"We yield to none in our grateful veneration for Lord Bacon's philosophical writings."—Coleridge.

"To-night I do entreat that we may sup together."

—Othello.

"A good dinner sharpens wit, while it softens the heart."

—Doran.



MENU.

"Now good digestion wait on appetite and health on both!"—MACBETH.

SOUP.

Ox Tail.

FISH.

Oysters, Blue Point.

Boiled Salmon, Egg Sauce.

"An oyster may be crossed in love."—SHERIDAN.

ROASTS.

Ribs of Beef, Horse Radish.

Spring Lamb, Mint Sauce.

Wild Duck, Crab Apple Jelly.

ENTREES.

Curried Veal, with Rice.

Sweetbreads, with Mushrooms.

Lobster Salad.

"My salad days, when I was green in judgment."—SHAKESPEARE.

COLD MEATS.

Chicken Jellied.

Sugar Cured Ham.

Jellied Beef Tongue, English style.

VEGETABLES.

Mashed Potatoes.

Green Peas.

Stewed Tomatoes.

PASTRY.

Plum Pudding, Brandy Sauce.

Apple Pie.

Raspberry Tart.

Assorted Cakes.

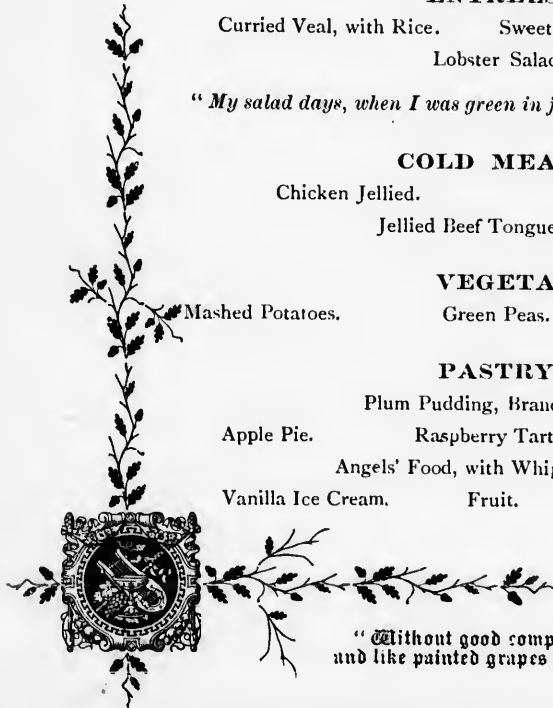
Angels' Food, with Whipped Cream.

Vanilla Ice Cream.

Fruit.

Tea.

French Coffee



"Without good company all dainties lose their true relish, and like painted grapes are only seen not tasted."

—Massinger.

"The act of feeding, as you understand,
Is but a fraction of the work in hand;
Its nobler half is that ethereal meat
The papers call 'the intellectual treat.'"

—O. W. Holmes.

TOASTS.

"THE QUEEN."

"She shall be loved and feared."

"THE BACONIAN CLUB."

(GEO. MOREHEAD.)

"THE BRITISH EMPIRE."

(JOHN STEVENSON.)

*"Whose flag has braved a thousand years
The battle and the breeze."* CAMPBELL.

"LORD BACON."

(JOHN DEARNESS.)

*"The world to Bacon does not only owe
Its present knowledge, but its future too."*

—DRYDEN.

"THE LEARNED PROFESSIONS."

(W. R. SMYTHE.)

(J. C. JUDD.)

"Ignorantia legis neminem excusat."

"OUR EDUCATIONAL INTERESTS."

(C. R. SOMERVILLE.)

*"Ignorance is the curse of God;
Knowledge the wing wherewith we fly to Heaven."*

—SHAKESPEARE.

"THE PRESS."

(W. THOMPSON.)

*"A chiel's amang ye takin' notes,
An' faith he'll print it."*—BURNS.

"OUR MERCANTILE INTERESTS."

(J. L. SHIPLEY.)

"SISTER ASSOCIATIONS."

(C. T. GLASS.)

"THE LADIES."

(C. G. JARVIS.)

*"The world was sad, the garden was a wild,
And man, the hermit, sighed, till woman smiled."*

—CAMPBELL

"OUR CRANKS."

(ALL OF THEM.)

*"I've got a little list
Of society offenders, who never would be missed."*

—KO-KO (THE MIKAI-O).





SEASON OF 1885-6.

OFFICERS.

HON. PRESIDENT—Hon. David Mills, M.P.

PRESIDENT—Geo. Morehead.

VICE-PRESIDENT—G. N. Weekes.

SEC.-TREAS.

R. A. Bayly.

J. P. Moore.

EXECUTIVE COMMITTEE.

J. C. Judd.

C. G. Jarvis.

J. H. A. Beattie.

P. H. Bartlett.

INCIDENTALS.

SONGS.

J. H. POPE

T. A. TELFER.

THOS. REID.

E. H. JOHNSTON.

RECITALS.

D. H. TENNENT.

WALTER MILLS.

GEO. MOREHEAD.

J. H. A. BEATTIE.

"Man in society is like a flower
Blown in its native bed ; 'tis there alone
His faculties expanded in full bloom
Shine out ; there only reach their proper use."

—Cowper

