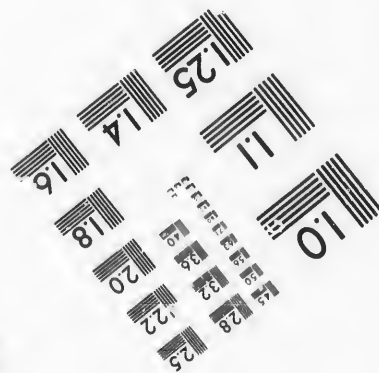
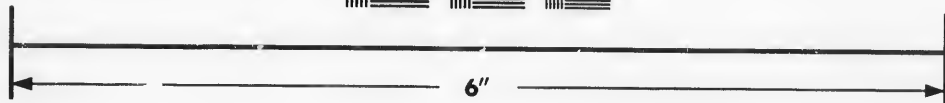
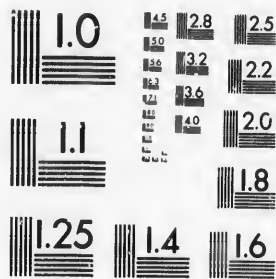


**IMAGE EVALUATION
TEST TARGET (MT-3)**



**Photographic
Sciences
Corporation**

23 WEST MAIN STREET
WEBSTER, N.Y. 14580
(716) 872-4503

**CIHM/ICMH
Microfiche
Series.**

**CIHM/ICMH
Collection de
microfiches.**



Canadian Institute for Historical Microreproductions / Institut canadien de microreproductions historiques

© 1986

Technical and Bibliographic Notes/Notes techniques et bibliographiques

The Institute has attempted to obtain the best original copy available for filming. Features of this copy which may be bibliographically unique, which may alter any of the images in the reproduction, or which may significantly change the usual method of filming, are checked below.

L'Institut a microfilmé le meilleur exemplaire qu'il lui a été possible de se procurer. Les détails de cet exemplaire qui sont peut-être uniques du point de vue bibliographique, qui peuvent modifier une image reproduite, ou qui peuvent exiger une modification dans la méthode normale de filmage sont indiqués ci-dessous.

- | | |
|---|---|
| <input type="checkbox"/> Coloured covers/
Couverture de couleur | <input type="checkbox"/> Coloured pages/
Pages de couleur |
| <input type="checkbox"/> Covers damaged/
Couverture endommagée | <input type="checkbox"/> Pages damaged/
Pages endommagées |
| <input type="checkbox"/> Covers restored and/or laminated/
Couverture restaurée et/ou pelliculée | <input type="checkbox"/> Pages restored and/or laminated/
Pages restaurées et/ou pelliculées |
| <input type="checkbox"/> Cover title missing/
Le titre de couverture manque | <input type="checkbox"/> Pages discoloured, stained or foxed/
Pages décolorées, tachetées ou piquées |
| <input type="checkbox"/> Coloured maps/
Cartes géographiques en couleur | <input type="checkbox"/> Pages detached/
Pages détachées |
| <input type="checkbox"/> Coloured ink (i.e. other than blue or black)/
Encre de couleur (i.e. autre que bleue ou noire) | <input type="checkbox"/> Showthrough/
Transparence |
| <input type="checkbox"/> Coloured plates and/or illustrations/
Planches et/ou illustrations en couleur | <input type="checkbox"/> Quality of print varies/
Qualité inégale de l'impression |
| <input type="checkbox"/> Bound with other material/
Relié avec d'autres documents | <input type="checkbox"/> Includes supplementary material/
Comprend du matériel supplémentaire |
| <input type="checkbox"/> Tight binding may cause shadows or distortion along interior margin/
La reliure serrée peut causer de l'ombre ou de la distorsion le long de la marge intérieure | <input type="checkbox"/> Only edition available/
Seule édition disponible |
| <input type="checkbox"/> Blank leaves added during restoration may appear within the text. Whenever possible, these have been omitted from filming/
Il se peut que certaines pages blanches ajoutées lors d'une restauration apparaissent dans le texte, mais, lorsque cela était possible, ces pages n'ont pas été filmées. | <input type="checkbox"/> Pages wholly or partially obscured by errata slips, tissues, etc., have been refilmed to ensure the best possible image/
Les pages totalement ou partiellement obscurcies par un feuillet d'errata, une pelure, etc., ont été filmées à nouveau de façon à obtenir la meilleure image possible. |
| <input checked="" type="checkbox"/> Additional comments:
Commentaires supplémentaires: | [Printed ephemera] 1 sheet (verso blank) This copy is a photoreproduction. |

This item is filmed at the reduction ratio checked below/
Ce document est filmé au taux de réduction indiqué ci-dessous.

10X	12X	14X	16X	18X	20X	22X	24X	26X	28X	30X	32X
								✓			

The copy filmed here has been reproduced thanks to the generosity of:

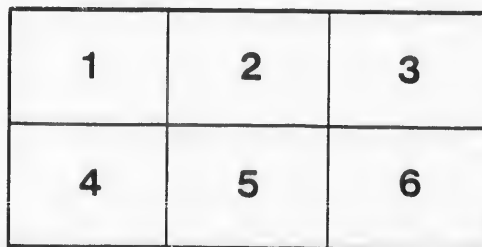
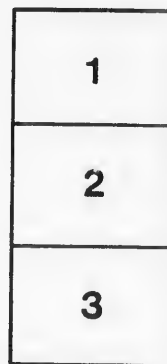
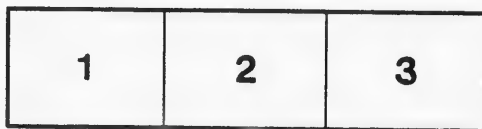
D. B. Weldon Library
University of Western Ontario
(Regional History Room)

The images appearing here are the best quality possible considering the condition and legibility of the original copy and in keeping with the filming contract specifications.

Original copies in printed paper covers are filmed beginning with the front cover and ending on the last page with a printed or illustrated impression, or the back cover when appropriate. All other original copies are filmed beginning on the first page with a printed or illustrated impression, and ending on the last page with a printed or illustrated impression.

The last recorded frame on each microfiche shall contain the symbol \rightarrow (meaning "CONTINUED"), or the symbol ∇ (meaning "END"), whichever applies.

Maps, plates, charts, etc., may be filmed at different reduction ratios. Those too large to be entirely included in one exposure are filmed beginning in the upper left hand corner, left to right and top to bottom, as many frames as required. The following diagrams illustrate the method:



L'exemplaire filmé fut reproduit grâce à la générosité de:

D. B. Weldon Library
University of Western Ontario
(Regional History Room)

Les images suivantes ont été reproduites avec le plus grand soin, compte tenu de la condition et de la netteté de l'exemplaire filmé, et en conformité avec les conditions du contrat de filmage.

Les exemplaires originaux dont la couverture en papier est imprimée sont filmés en commençant par le premier plat et en terminant soit par la dernière page qui comporte une empreinte d'impression ou d'illustration, soit par le second plat, selon le cas. Tous les autres exemplaires originaux sont filmés en commençant par la première page qui comporte une empreinte d'impression ou d'illustration et en terminent par la dernière page qui comporte une telle empreinte.

Un des symboles suivants apparaîtra sur la dernière image de chaque microfiche, selon le cas: le symbole \rightarrow signifie "A SUIVRE", le symbole ∇ signifie "FIN".

Les cartes, planches, tableaux, etc., peuvent être filmés à des taux de réduction différents. Lorsque le document est trop grand pour être reproduit en un seul cliché, il est filmé à partir de l'angle supérieur gauche, de gauche à droite, et de haut en bas, en prenant le nombre d'images nécessaire. Les diagrammes suivants illustrent la méthode.

CHANCER

OF

REALTY

IN CHANCERY

George Leslie, vs. Sarah

Purquant to the Decree of the Court of Chancery, made in this Cause, dated the Sixth day
Court at London, will be

PRINTED BY

EVERY SALE

OF

REAL ESTATE

AUCTIONERY

Sarah Flanery and others.

dated the Sixth day of November, A. D. 1868, and with the approbation of the Master of this Court at London, will be sold by

AUCTIONEER

PUBLIC AUCTION

At the Chambers of the Master in Chancery

SATURDAY, MAY

AT THE HOUR OF 12 O'CLOCK

the following Freehold Farm Property, being all and singular that certain parcel or tract of land in the County of Middlesex, containing by admeasurement Eighty-five Acres, be the same more or less, situate in the Township of Biddulph, except fifteen acres of the same, more or less, commencing at the north-west corner thereof one hundred rods; then running across the lot easterly far enough to contain a within

The property is about six miles from the village of Lucan, on the Grand Trunk Railway

The property will be sold in one lot.

A deposit of ten dollars for every one hundred dollars of the purchase money to be paid on the second day of June then following.

The property will be put up subject to a reserved bidding.

The purchaser will be let into possession within ten days after the sale.

In other respects, and except as above-mentioned, the Conditions of Sale are the same as in the Conditions of Sale of the property sold by the said Harris & Magee on the 15th day of May, 1869.

The Conditions of Sale and further particulars may be obtained at the Chambers of the Master in Chancery, or of Messrs. Harris & Magee, Barristers, and William Horton, Esquire, Barrister, in the City of London.

Dated this seventeenth day of May, A. D. 1869.

(SIGNED)

HARRIS & MAGEE,

Vendor's Solicitors.

AUCTION

in Chancery, Ridout St., City of London, on

MAY 29, 1869,

AT 12 O'CLOCK, NOON,

parcel or tract of land and premises situate, lying and being in the Township of Biddulph, in
be the same more or less, and being composed of all of lot No. 20, in the 7th con. of the said
encencing at the northwest angle of the said lot, and running south along the western boundary
to contain within a parallelogram fifteen acres.

and Trunk Railway and Proof Line Road. There are about sixty acres cleared.

aid by purchaser to the Vendor or his Solicitor at the time of sale, and the

le.

ions of Sale are the Standing Conditions of the Court of Chancery.

e Chambers of James Shanly, Esquire, Master in Chancery at London; at the offices of Messrs.
City of London.

J. SHANLY,

Master in Chancery.

Press Office, Richmond Street, London.

