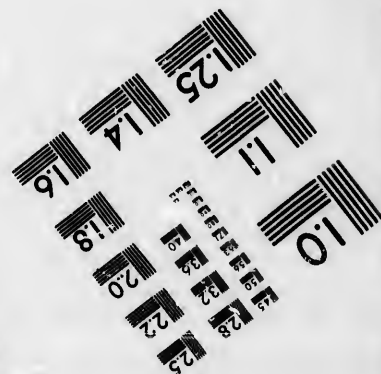
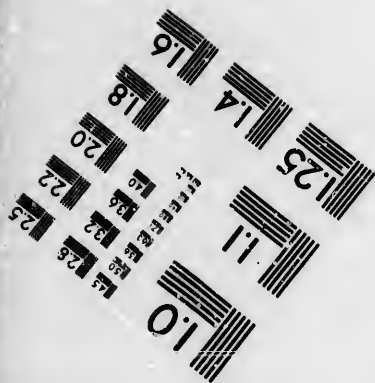
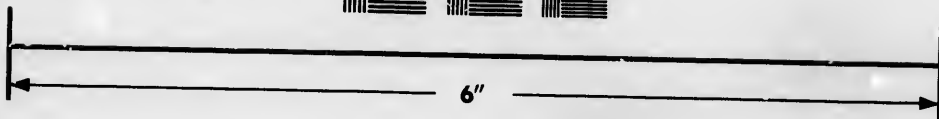
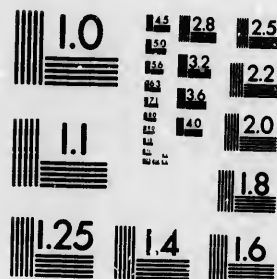


**IMAGE EVALUATION
TEST TARGET (MT-3)**



**Photographic
Sciences
Corporation**

23 WEST MAIN STREET
WEBSTER, N.Y. 14580
(716) 872-4503



**CIHM/ICMH
Microfiche
Series.**

**CIHM/ICMH
Collection de
microfiches.**



Canadian Institute for Historical Microreproductions / Institut canadien de microreproductions historiques



© 1986

Technical and Bibliographic Notes/Notes techniques et bibliographiques

The Institute has attempted to obtain the best original copy available for filming. Features of this copy which may be bibliographically unique, which may alter any of the images in the reproduction, or which may significantly change the usual method of filming, are checked below.

L'Institut a microfilmé le meilleur exemplaire qu'il lui a été possible de se procurer. Les détails de cet exemplaire qui sont peut-être uniques du point de vue bibliographique, qui peuvent modifier une image reproduite, ou qui peuvent exiger une modification dans la méthode normale de filmage sont indiqués ci-dessous.

- Coloured covers/
Couverture de couleur
- Covers damaged/
Couverture endommagée
- Covers restored and/or laminated/
Couverture restaurée et/ou pelliculée
- Cover title missing/
Le titre de couverture manque
- Coloured maps/
Cartes géographiques en couleur
- Coloured ink (i.e. other than blue or black)/
Encre de couleur (i.e. autre que bleue ou noire)
- Coloured plates and/or illustrations/
Planches et/ou illustrations en couleur
- Bound with other material/
Relié avec d'autres documents
- Tight binding may cause shadows or distortion
along interior margin/
La reliure serrée peut causer de l'ombre ou de la
distorsion le long de la marge intérieure
- Blank leaves added during restoration may
appear within the text. Whenever possible, these
have been omitted from filming/
Il se peut que certaines pages blanches ajoutées
lors d'une restauration apparaissent dans la texte,
mais, lorsque cela était possible, ces pages n'ont
pas été filmées.
- Additional comments:/ [Printed ephemera] [20] p.
Commentaires supplémentaires:

- Coloured pages/
Pages de couleur
- Pages damaged/
Pages andommagées
- Pages restored and/or laminated/
Pages restaurées et/ou pelliculées
- Pages discoloured, stained or foxed/
Pages décolorées, tachetées ou piquées
- Pages detached/
Pages détachées
- Showthrough/
Transparence
- Quality of print varies/
Qualité inégale de l'impression
- Includes supplementary material/
Comprend du matériel supplémentaire
- Only edition available/
Seule édition disponible
- Pages wholly or partially obscured by errata
slips, tissues, etc., have been refilmed to
ensure the best possible image/
Les pages totalement ou partiellement
obscurcies par un feuillet d'errata, une pelure,
etc., ont été filmées à nouveau de façon à
obtenir la meilleure image possible.

This item is filmed at the reduction ratio checked below/
Ce document est filmé au taux de réduction indiqué ci-dessous.

10X	14X	18X	22X	26X	30X
<input type="checkbox"/>	<input checked="" type="checkbox"/>	<input type="checkbox"/>	<input type="checkbox"/>	<input type="checkbox"/>	<input type="checkbox"/>
12X	16X	20X	24X	28X	32X

The copy filmed here has been reproduced thanks to the generosity of:

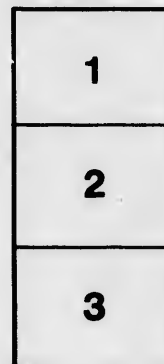
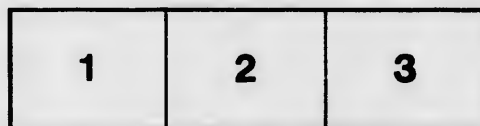
Douglas Library
Queen's University

The image appearing here was the best quality possible considering the condition and legibility of the original copy and in keeping with the filming contract specifications.

Original copies in printed paper covers are filmed beginning with the front cover and ending on the last page with a printed or illustrated impression, or the back cover when appropriate. All other original copies are filmed beginning on the first page with a printed or illustrated impression, and ending on the last page with a printed or illustrated impression.

The last recorded frame on each microfiche shall contain the symbol \rightarrow (meaning "CONTINUED"), or the symbol ∇ (meaning "END"), whichever applies.

Maps, plates, charts, etc., may be filmed at different reduction ratios. Those too large to be entirely included in one exposure are filmed beginning in the upper left hand corner, left to right and top to bottom, as many frames as required. The following diagrams illustrate the method:



L'exemplaire filmé fut reproduit grâce à la générosité de:

Douglas Library
Queen's University

Les images suivantes ont été reproduites avec le plus grand soin, compte tenu de la condition et de la netteté de l'exemplaire filmé, et en conformité avec les conditions du contrat de filmage.

Les exemplaires originaux dont la couverture en papier est imprimée sont filmés en commençant par le premier plat et en terminant soit par la dernière page qui comporte une empreinte d'impression ou d'illustration, soit par le second plat, selon le cas. Tous les autres exemplaires originaux sont filmés en commençant par la première page qui comporte une empreinte d'impression ou d'illustration et en terminant par la dernière page qui comporte une telle empreinte.

Un des symboles suivants apparaîtra sur la dernière image de chaque microfiche, selon le cas: le symbole \rightarrow signifie "A SUIVRE", le symbole ∇ signifie "FIN".

Les cartes, planches, tableaux, etc., peuvent être filmés à des taux de réduction différents. Lorsque le document est trop grand pour être reproduit en un seul cliché, il est filmé à partir de l'angle supérieur gauche, de gauche à droite, et de haut en bas, en prenant le nombre d'images nécessaire. Les diagrammes suivants illustrent la méthode.

CANADA ATLANTIC STEAMSHIP LINE,

(LIMITED.)



ONLY ONE NIGHT AT SEA.

Shortest, Cheapest, and Most
Direct Route to

BOSTON,

NEW YORK

all points
UNITED STATES
and CANADA.
n.d.
Canada

G. I. LAMING & CO. GENERAL MANAGERS
 100 NASSAU ST. N.Y.

CANADA ATLANTIC STEAMSHIP LINE,

(LIMITED.)

ONE NIGHT ONLY AT SEA.

SHORTEST AND MOST DIRECT ROUTE
TO

☀️ **HALIFAX** ☀️

AND

All Points in the Provinces

REACHED BY

RAIL AND WATER CONNECTIONS

AT HALIFAX.

3029157

Canada Atlantic Steam
(LIMITED.)

The New Clyde-Built Steamer



* **HALIFAX**

1650 Tons.

S. R. HILL

Perfect Construction, and
with all Modern Im-
vements.

BUILT EXPRESSLY FOR T
COMBINING SAFETY, S
AND COMFORT.

ELECTRIC LIGHTED THROUGHOUT
LUXURIOUS CABINS.
ELEGANT

Grand Dining-Saloon above

PALATIAL SOCIAL HALL.
SPACIOUS SMOKING-ROOM
PROMENADE DECK

THE FASTEST AND BEST-EQUIPPED
STEAMSHIP

— BETWEEN —

BOSTON AND THE PROVINCES

Atlantic Steamship Co.,
(LIMITED.)

New Clyde-Built Steamship

HALIFAX * 

S. R. HILL, COMMANDER.

Construction, and Equipped
with all Modern Improve-
ments.

**PRESSLY FOR THIS ROUTE,
ENSURING SAFETY, SPEED,
AND COMFORT.**

**RIGHTED THROUGHOUT.
LUXURIOUS CABINS.**

ELEGANT STATEROOMS.

Saloon above Main Deck.

SOCIAL HALL.

SMOKING-ROOM.

PROMENADE DECK, 240 ft. long.

**LARGEST AND BEST-EQUIPPED PASSENGER
STEAMSHIP**

BETWEEN

NEW ENGLAND AND THE PROVINCES.

Canada Atlantic Steamship Co.,
(LIMITED.)

STEAMSHIP "HALIFAX"

WILL LEAVE

South Side Lewis Wharf, Boston,
EVERY SATURDAY, AT NOON.
Due at Halifax Sunday Evening.

Noble's Wharf, Halifax,
EVERY WEDNESDAY FORENOON.
Due at Boston Thursday 4 P.M.

RATES OF PASSAGE,

First-Class, \$7.00. Excursion, \$12.00.

Each ticket entitles holder to a berth. Berth
in Stateroom, \$1.50 or \$1.00, according to loca-
tion. Whole Stateroom, \$4.50.

*ROOMS and BERTHS may be engaged with,
and TICKETS purchased of,*

IN BOSTON

R. B. GARDNER, Lewis Wharf,

L. H. PALMER, Old State House.

IN NEW YORK

THOS. COOK & SON, 261 Broadway,

FALL RIVER LINE,

NEW YORK, NEW HAVEN & HARTFORD R.R.

STATE-ROOMS

— CAN BE —

Secured in Advance

BY MAIL, OR BY APPLICATION TO

R. B. GARDNER,

Lewis Wharf, 34 Atlantic Ave.,

L. H. PALMER,

Old State House,

BOSTON.

CHIPMAN BROTHERS,

J. F. PHELAN & SON,

HALIFAX.

C. DWYER,

Pictou.

A. BAIN,

Port Hawkesbury.

CARVELL BROS., Charlottetown.

R. B. GARDNER, Manager, Boston.

— GO BY SEA —

And avoid the frequent changes and terrible heat and dust of Railroad Travel.

RATES OF PAS

BY "CARROLL" OR "WO

	Single
Boston to Halifax, - - -	\$
" Pictou, (Steamer all the way)	"
" Pictou, (R.R. from Halifax.)	"
" New Glasgow, "	"
" Truro, "	"
" Antigonish, "	"
" Windsor, "	"
" Kentville, "	"
" Sydney, - - -	"
Change Steamer at Port Hawkesbury	
" St. Peter's, - - -	"
Change Steamer at Port Hawkesbury	
" Baddeck, - - -	"
Change Steamer at Port Hawkesbury	
" Port Hawkesbury,	"
" Charlottetown, - - -	"

Children under twelve years of age four years, free.

Excursion Tickets good

RATES OF PASSAGE.

ROLL" OR "WORCESTER."

	Single Fare.	Excursion.
Halifax, - -	\$6.00	\$11.00
Pictou, (Steamer all the way)	7.00	
Pictou, (R.R. from Halifax.)	9.25	
New Glasgow, "	9.00	
Truro, "	8.25	
Antigonish, "	10.00	
Windsor, "	7.50	
Kentville, "	8.50	
Sydney, - -	9.50	16.50
Range Steamer at Port Hawkesbury.		
St. Peter's, -	7.50	13.50
Range Steamer at Port Hawkesbury.		
Baddeck, - -	8.50	15.00
Range Steamer at Port Hawkesbury.		
Port Hawkesbury,	6.50	12.00
Charlottetown, -	7.50	14.00

under twelve years of age, half rates; under three years, free.

on Tickets good until used.

RATES OF PASSAGE

PER

STEAMSHIP "HALIFAX."

	PER	RETURN.
Truro	\$8.86	\$13.79
New Glasgow	10.00	15.50
Pictou	10.24	15.86
Antigonish	10.25	16.40
Windsor	8.50	15.00
Kentville	9.50	16.50
Annapolis	10.00	18.00
Lunenburg	8.50	15.00
Bridgewater	9.00	16.00
Mahone Bay	8.75	15.50
St. Pierre	22.00	37.00

2 STEAMERS A WEEK
 TO AND FROM
HALIFAX.

WEEKLY TRIPS
 TO AND FROM
PT. HAWKESBURY,
PICTOU,
CHARLOTTETOWN.

*The Oldest and Most Popular Route
 to and from the East.*

First-Class New Steamship "Halifax" leaves Boston every Saturday, at noon, for Halifax only; returning, leaves Halifax every Wednesday at 10 A.M., or upon arrival of morning train.

*Steamship "Carroll" or "Worcester" leaves every **Wednesday** at 12 noon, arriving at Halifax Friday forenoon, Port Hawkesbury Saturday morning, Pictou Saturday forenoon, Charlottetown Saturday afternoon; returning, leaves Charlottetown Thursday, 6 P.M.; Port Hawkesbury, Friday, 9 A.M.; and Halifax, Saturday, 4 P.M.; arriving in Boston Monday morning at 6 o'clock.*

*** EXCURSION TICKETS**

— AT —

REDUCED RATES

Can be secured at points mentioned at same rates.

ALL TICKETS ENTITLED TO A GOOD, COMFORTABLE BERTH IN CABIN

*Price of State-room Berth on
 Carroll and Worcester to*

Halifax - - - -
 Pictou, Port Hawkesbury & Charlottetown

Passengers can remain on board at Charlottetown.

STATE ROOMS, \$1.00

While in Charlottetown.

Meals Served in Best

*Breakfast or Supper -
 Dinner - - - -*

— OR —

ON EUROPEAN PLAN WHEN

MEAL TICKETS

For the round trip, not including at Charlottetown, \$10.00.

MEALS SERVED

On board at Charlottetown at same rates.

EXCURSION TICKETS*

— AT —

REDUCED RATES

at points mentioned at the same rates.

ETS ENTITLE HOLDER GOOD, COMFORTABLE BERTH IN CABIN.

ate-room Berth on steamers and Worcester to or from

- - - - \$1.00
awkesbury & Charlottetown, 2.00

remain on board at Charlottetown.

ROOMS, \$1.00 a Day,

While in Charlottetown.

SERVED in Best Style.

r Supper - 50c. each.
- - - 75 cents.

— OR —

LEAN PLAN WHEN DESIRED.

MEAL TICKETS.

and trip, not including the time down, \$10.00.

MEALS SERVED

at Charlottetown at above rates.

CONNECTIONS

AT HALIFAX

— WITH THE —

INTERCOLONIAL RAILWAY FOR TRURO,

New Glasgow, Pictou and Antigonish, Windsor and Annapolis Railroad for Windsor, Kentville and other points on these roads,

— AND WITH —

The Steamships of the Allan Line for St. Johns, N.F., and once in two weeks with Steamers for St. Pierre, Miquelon.

AT PORT HAWKESBURY

With Steamers of Bras d'Or Steamship Company, and Stages for Sydney, Baddeck, McPherson's, St. Peter's and all the

PRINCIPAL POINTS IN CAPE BRETON.

AT PICTOU

— WITH THE —

Steamships of the Quebec Steamship Co.

— FOR —

QUEBEC and MONTREAL.

THROUGH TICKETS.

HALIFAX TO NEW YORK

— VIA —

SOUND LINES,

May be procured from the Agents of the Line
at Halifax.

— ALSO —

THROUGH TICKETS

NEW YORK TO ALL POINTS

May be procured from Passenger Agents of the

SOUND LINES

in New York, including transfer at Boston.

DISTANCES FROM BOSTON :

<i>To Halifax</i>	-	-	<i>400 Miles.</i>
<i>Port Hawkesbury</i>			<i>600</i> ..
<i>Pictou</i>	-	-	<i>675</i> ..
<i>Charlottetown</i>	-		<i>715</i> ..

THE STEAMERS OF THESE LINES

A Most Healthy

— AND —

Interesting Summer

— COMBINING AN —

OCEAN VOYAGE

With the passage through

Picturesque Straits of

St. George's Bay

— AND —

Northumberland Strait

This excursion, affording as it does a complete change, relaxation and rest, is particularly to

Professional Men, School

Students, Clerks, and

and to those whose business nature as to keep them indoors

Cultivated people, who wish to avoid the crowded and expensive resorts of the city, have found the Lower Province a most invigorating, instructive and enjoyable

ERS OF THESE LINES FURNISH

Most Healthful

—AND—

ting Summer Trip,

—COMBINING AN—

SEAN VOYAGE

h the passage through the

que Straits of Canso,

. George's Bay

—AND—

umberland Straits.

ersion, affording as it does a com-
e, relaxation and rest, commends
ularly to

al Men, School Teachers,
ents, Clerks, Artists,

se whose business is of such a
keep them indoors.

l people, who wish to escape the
l expensive resorts nearer Boston,
the Lower Provinces a most in-
structive and enjoyable retreat.

© — THE — ©

Boston, Halifax

—AND—

Prince Edward Island

STEAMSHIP LINE

Comprises the following

First-Class Ocean Steamships :

“CARROLL.”

1,400 TONS.

G. H. BROWN - - Commander.
WM. P. NICKERSON, Purser.

“WORCESTER.”

1,400 TONS.

Z. NICKERSON - - Commander.
F. H. SAWYER, - - Purser.

Canada Atlantic Steamship Co.,
(LIMITED.)

AT HALIFAX,

**CONNECTING WITH RAIL AND WATER
LINES TO**

**Truro, New Glasgow, Pictou,
Antigonish, Windsor,
Kentville,
Annapolis, Lunenburg,
Chester,
Bridgewater, Mahone Bay,
St. Johns, N. F.,
Liverpool, St. Pierre Miql.,
Etc., Etc.**

☛ Take the CANADA ATLANTIC STEAMSHIP
LINE, with its many attractive features, passing
but one night at sea.

THE ROUND TRIP.

No more delightful trip can be taken than to make the round trip in one of these Steamers, leaving Boston at 12.00 o'clock, noon, Wednesday, calling at Halifax, Port Hawkesbury, Pictou and Charlottetown, going down; remaining at Charlottetown four days, giving ample time for a run through Prince Edward Island, truly called the Garden of England, calling at Port Hawkesbury and Halifax on the way back, and arriving at Boston early in the morning of the second Monday, after departure, taking twelve days, and costing, including meals and state-room berth for the round trip, less than \$40.00. For this, one has a short ocean voyage, travels 1,500 miles, and is furnished with comfortable state-room accommodations and excellent board.

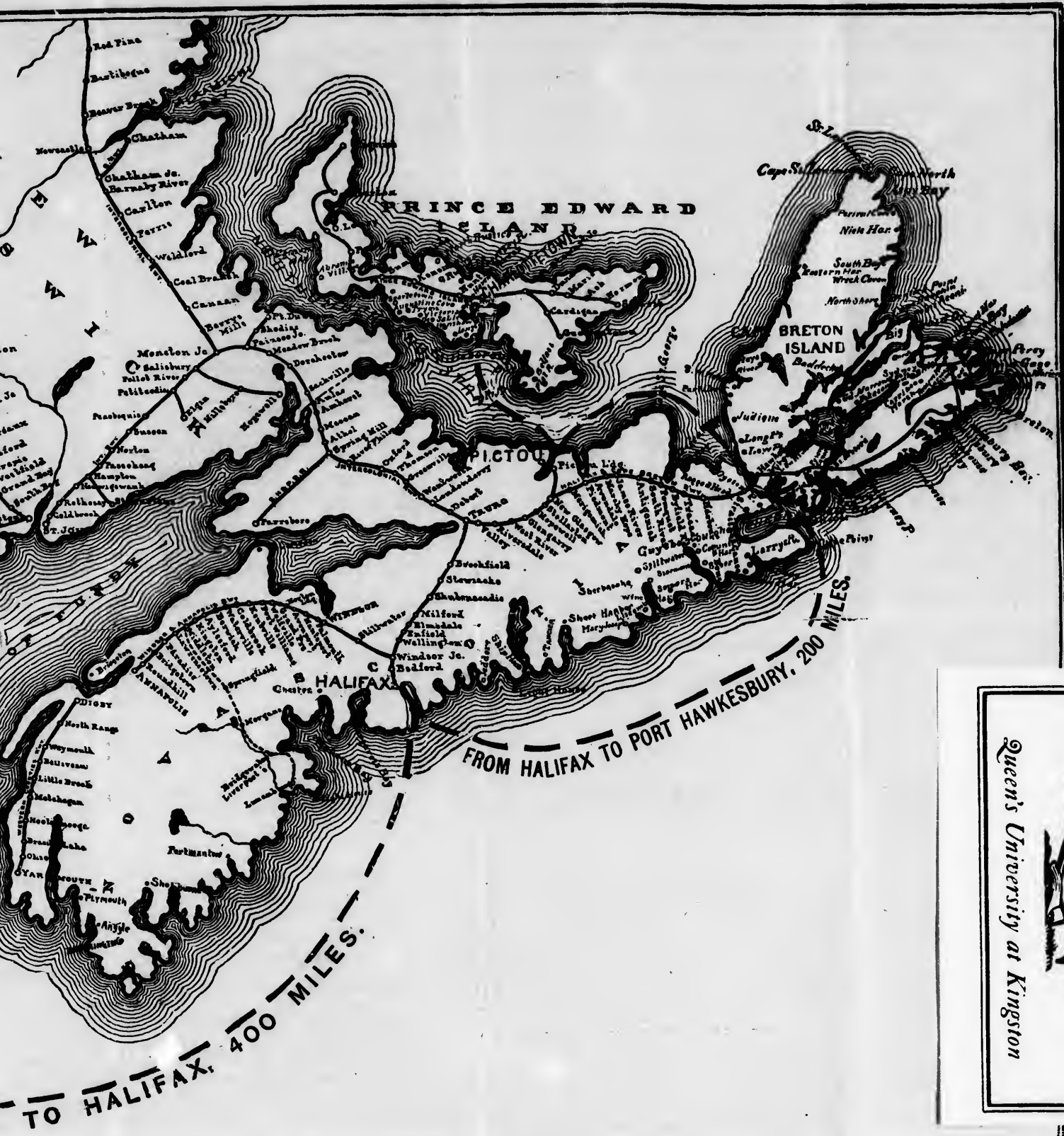
(OVER.)



FROM BOSTON TO HALIFAX

SCALE OF MILES.

COPYRIGHT RESERVED



The EDITH and LORENCE
COLLECTION of CANADIANA

Queen's University at Kingston

Certainly no cheaper Summer Excursion could be planned, nor one more novel and interesting.

Particular attention has been given to the selection of the officers for the Steamships of this line, and they are instructed to look carefully after the comfort of the passengers, *especially Women and Children Travelling Without Escort.*

Excellent board can be obtained on Prince Edward Island at very low prices, and excursionists can stop over as long as they please.

Compare our rates with those of other lines before purchasing elsewhere, and remember by this line there is *No Change* between Boston, Halifax, Port Hawkesbury, Pictou and Charlottetown.

Those who are fond of fishing and gunning will find, at Cape Breton, new and unfrequented fields of sport.

Quite a number of sportsmen, availing themselves of this fine opportunity, make a yearly excursion to the island, spending several weeks.

ATTENTION IS CALLED TO THE FOLLOWING INTERESTING POINTS.

Trips to the Provinces are becoming more and more popular every year, and excursionists taking one of the steamships of this Line (which is the only direct one to Halifax, Port Hawkesbury, Cape Breton and Prince Edward Island), sailing from Boston on Wednesdays of each week, after thirty hours' delightful sailing arrive at Halifax, where they can remain, if they prefer, until a steamship of this Line touches there again on her return to Boston, or they can go on, taking the whole round trip for a very moderate sum.

If our traveller decides to stop at Halifax he can secure board at one of the many hotels, or procure a good home in a comfortable boarding house for a very moderate sum.

He must visit the Citadel, take an hour to admire the Public Garden (which is only equalled by the Public Garden of Boston), and a ride through the Park, over the N.W. Arm, where he can enjoy a view of the magnificent harbor, one of the finest in the world. He will avail himself of the pleasure of the most delightful drive to the Four Mile House, and on the shores of the Bedford Basin. Two or three days could be well spent in Halifax, although the traveller could get an excellent idea of the place in one day.

Short Excursions from Halifax.

One day will be well spent in a trip to Truro, a town of more than four thousand inhabitants, situated near the Basin of Minas, where one can take the famous drive which commands a view of the high tides.

A Trip to Grand Pre and the Gasperaux River,

as connections are made with the Windsor & Annapolis Railway at Halifax, should be taken. The cheapest way would be for the tourist to buy excursion tickets to Halifax.

This is the famous Acadia Land of Nova Scotia, which Longfellow has immortalized in his wonderful poem. One feels truly that he is on historic ground, and all lovers of Nature must admire the vast meadows, reclaimed first by the Acadians, who were so cruelly driven from their homes.

"There in the midst of its farms reposed the Acadian village;
Strongly built were the houses with frames of oak and chestnut,
Such as the peasants of Normandy built in the reign of the Henries;
Thatched were the roofs, with dormer-windows, and gables projecting
Over the basement below protected and shaded the door-way;
There in the tranquil evenings of summer, when brightly the sunset
Lighted the village street and gilded the vanes of the chimneys,
Matrons and maidens sat in snow-white caps and in kirtles
Scarlet and blue and green, with distaffs spinning the golden
Flax for the gossiping looms whose noisy shuttles within doors
Mingled their sound with the whir of the wheels and the songs of the maidens."

Cape Breton.

The excursionist must not fail to go to Cape Breton Island, where lies the finest scenery this side of Scotland,—that of the Bras d'Or Lakes. The easiest route is from Boston to Port Hawkesbury by steamship, and thence up the Bras d'Or. On the sail from Halifax to Port Hawkesbury he will have a view of the rugged headlands of the Nova Scotia coast. He will pass on his left Cape Canso, the extreme north-eastern point of Nova Scotia. The sail occupies sixteen hours. From Hawkesbury he can go to Baddeck, St. Peter's, Sydney, or any other point of interest. Excursion tickets can be bought in Boston for these places.

Sydney is the principal town of Cape Breton. Small hotels and boarding houses are to be found here. The steamers on the Bras d'Or make daily trips in the summer.

If our traveller locates at Baddeck he can take short daily trips; for example, to St. Anne's Bay. The ride is picturesque, the sea is very fine, the shore bold, the air invigorating. Another interesting spot is Why-cocomagh. One can go by steamer or by stage. He may visit St. Peter's, and if he has time, he can make a delightful trip to Margaree River. In fact, he can spend two or three weeks on the Island of Cape Breton, there are so many pleasant drives to take and short excursions to make. One traveller says: "Our ten days at Baddeck were certainly some of the pleasantest I ever spent."

Prince Edward Island.

Should our tourist wish to push on and take in the beauty of Prince Edward Island, he can easily go by local conveyance from Port Hawkesbury to Charlottetown, and make his visit there, taking the steamship of this Line from Charlottetown to Boston direct. This will afford him the best opportunity to admire the beauty of the Northumberland Straits. "It was one of the most delightful days of my life," said one.

The quiet and undisturbed repose enhanced by the charm of the delightful scenery will never be forgotten by those who, weary with the heat and turmoil of city life, give themselves up to the tranquil enjoyment of the picturesque and beautiful during a summer's vacation in any of these healthful resorts in the Provinces, where rest and recuperation for mind and body can be found either among the hills or deep-green woods of the country, or at the sea-shore, bathing in the surf and inhaling the invigorating breezes of the sea.

SUMMER EXCURSIONS

BRITISH PROVINCES,
GULF OF ST. LAWRENCE
AND NEW FOUNDLAND.

Boston, Halifax and P.E. Island



AND CONNECTIONS FROM
BOSTON TO HALIFAX, N.S.
PORT HAWKESBURY, C.B.
PICTOU, N.S.
CHARLOTTETOWN, P.E.I.
QUEBEC, MONTREAL.
AND ST. JOHNS, N.F.

RAND AVERY SUPPLY CO., BOSTON.

