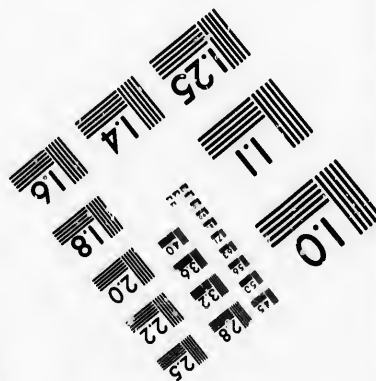
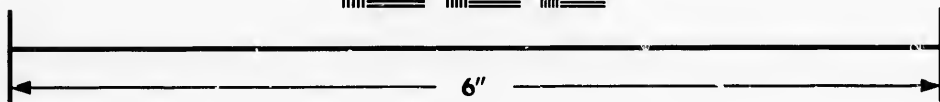
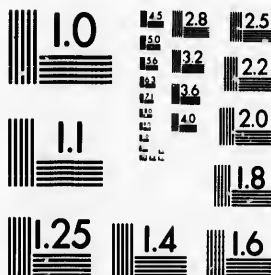


**IMAGE EVALUATION
TEST TARGET (MT-3)**



**Photographic
Sciences
Corporation**

23 WEST MAIN STREET
WEBSTER, N.Y. 14580
(716) 872-4503

14 28 25
18 22 20
16 32

**CIHM/ICMH
Microfiche
Series.**

**CIHM/ICMH
Collection de
microfiches.**



Canadian Institute for Historical Microreproductions / Institut canadien de microreproductions historiques

10
01

© 1987

The Institute has attempted to obtain the best original copy available for filming. Features of this copy which may be bibliographically unique, which may alter any of the images in the reproduction, or which may significantly change the usual method of filming, are checked below.

L'Institut a tenté d'obtenir le meilleur exemplaire original disponible pour le filmage. Les caractéristiques de cet exemplaire qui sont bibliographiquement uniques, qui peuvent modifier les images dans la reproduction, ou qui peuvent modifier de façon importante la méthode habituelle de filmage, sont indiquées ci-dessous.

- Coloured covers/
Couverture de couleur
- Covers damaged/
Couverture endommagée
- Covers restored and/or laminated/
Couverture restaurée et/ou pelliculée
- Cover title missing/
Le titre de couverture manque
- Coloured maps/
Cartes géographiques en couleur
- Coloured ink (i.e. other than blue or black)/
Encre de couleur (i.e. autre que bleue ou noire)
- Coloured plates and/or illustrations/
Planches et/ou illustrations en couleur
- Bound with other material/
Relié avec d'autres documents
- Tight binding may cause shadows or distortion along interior margin/
La reliure serrée peut causer de l'ombre ou de la distorsion le long de la marge intérieure
- Blank leaves added during restoration may appear within the text. Whenever possible, these have been omitted from filming/
Il se peut que certaines pages blanches ajoutées lors d'une restauration apparaissent dans le texte, mais, lorsque cela était possible, ces pages n'ont pas été filmées.
- Additional comments:/
Commentaires supplémentaires:
[Printed ephemera] 1 sheet, [2] p.

- Co
Pa
- Pa
Pa
- Pa
Pa
- Pa
Pa
- Pa
Pa
- Sh
Tr
- Qu
Qu
- In
Co
- On
Se
- Pa
sli
en
Le
ob
et
ob

This item is filmed at the reduction ratio checked below/
Ce document est filmé au taux de réduction indiqué ci-dessous.

10X		14X		18X		22X	
12X		16X		20X			

The copy filmed here has been reproduced thanks to the generosity of:

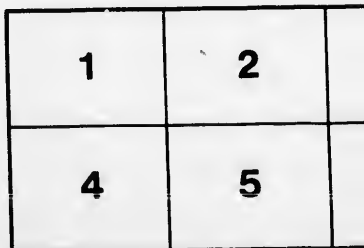
Metropolitan Toronto Library
Canadian History Department

The images appearing here are the best quality possible considering the condition and legibility of the original copy and in keeping with the filming contract specifications.

Original copies in printed paper covers are filmed beginning with the front cover and ending on the last page with a printed or illustrated impression, or the back cover when appropriate. All other original copies are filmed beginning on the first page with a printed or illustrated impression, and ending on the last page with a printed or illustrated impression.

The last recorded frame on each microfiche shall contain the symbol \rightarrow (meaning "CONTINUED"), or the symbol ∇ (meaning "END"), whichever applies.

Maps, plates, charts, etc., may be filmed at different reduction ratios. Those too large to be entirely included in one exposure are filmed beginning in the upper left hand corner, left to right and top to bottom, as many frames as required. The following diagrams illustrate the method:



L'exemp
généros

Les ima
plus gra
de la né
conform
filmage

Les exe
papier
par le p
dernière
d'impre
plat, se
origina
premièr
d'impre
la dern
empres

Un des
dernière
cas: le
symbo

Les ca
filmés
Lorsqu
reprod
de l'ar
et de l
d'imag
illustr

thanks

L'exemplaire filmé fut reproduit grâce à la générosité de:

Metropolitan Toronto Library
Canadian History Department

ality
bilty
e

Les images suivantes ont été reproduites avec le plus grand soin, compte tenu de la condition et de la netteté de l'exemplaire filmé, et en conformité avec les conditions du contrat de filmage.

filmed
on
mpres-
All
on the
res-
rinted

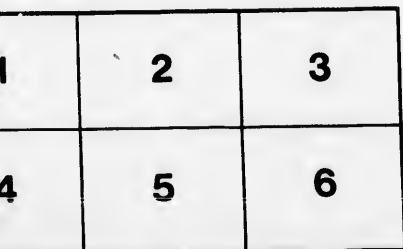
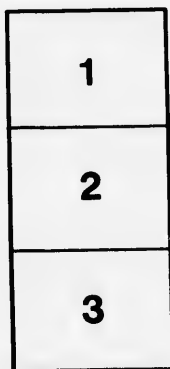
Les exemplaires originaux dont la couverture en papier est imprimée sont filmés en commençant par le premier plat et en terminant soit par la dernière page qui comporte une empreinte d'impression ou d'illustration, soit par le second plat, selon le cas. Tous les autres exemplaires originaux sont filmés en commençant par la première page qui comporte une empreinte d'impression ou d'illustration et en terminant par la dernière page qui comporte une telle empreinte.

ne
CON-
ID"),

Un des symboles suivants apparaîtra sur la dernière image de chaque microfiche, selon le cas: le symbole \rightarrow signifie "A SUIVRE", le symbole ∇ signifie "FIN".

at
to be
ed
eft to
as
e the

Les cartes, planches, tableaux, etc., peuvent être filmés à des taux de réduction différents. Lorsque le document est trop grand pour être reproduit en un seul cliché, il est filmé à partir de l'angle supérieur gauche, de gauche à droite, et de haut en bas, en prenant le nombre d'images nécessaire. Les diagrammes suivants illustrent la méthode.



READ THIS!

From the Perth "Courier," August 21st, 1874.



THE CANADIAN FARMER'S MANUAL OF AGRICULTURE. BY CHARLES EDWARD WHITCOMBE, with an Introduction by PROFESSOR H. McCANDLESS. Toronto: JAMES ADAM & CO.

This is the title of a new and valuable work on Canadian Agriculture, of 572 pages, and handsomely bound, just issued from the press by Messrs. James Adam & Co., Toronto. It is a work that should be in every farmer's hands, and form an important part of his reading matter, for, as farming is a trade, just as much as printing, carpentering, and blacksmithing, and one to which there is no end to the fund of information that can be derived in connection with it—so should every farmer seek to know everthing about it—the best modes of farming; what to sow and when; what stock to raise and how; the adaptabilities of the different soils to the various kinds of grain, roots and vegetables; the best kind of outbuildings, &c., &c. All this, and infinitely more, will be found in this work. There is no farmer too well posted in agriculture, or none too careless and "unscientific" in his business not to find a very great deal of practical benefit from a study—not merely a perusal, but a *study* of this work, as its range is too wide, its information too complete, and its advice too good not to be followed by profit to the farmer. The following are some of the articles treated upon, and will suffice to show the character of the book:—Soils, capital, farm-buildings, rotation of crops, drainage, manuring, seeds and sowing, treatment of burnt lands, sub-soiling, root-crops, field-crops, pasture lands, ploughing, seeds, flax-culture, peat, weeds, farm implements, hot-beds, fences, farm gates, trees suitable for soils, forests, cattle-breeding, feeding and fattening, milch-cows, raising calves, milk, butter and cheese, horses, sheep, lambs, pigs; diseases of cattle, horses, &c.; land surveying, machinery, weights and measures, business transactions, farm accounts, taxes, roads, wills, farm labor, &c. The work is illustrated with suggestive engravings—in short nothing is left undone to render it a first-class book of advice and instruction for the Canadian farmer. It has the additional merit over periodicals of having all this information in a compact form, in one volume.

N.B.—The price of the work is placed so low that no Farmer can have a reasonable excuse for being without a copy.

For farther particulars see large descriptive Circular.

Apply to Local Agent, or address the Publishers,

Messrs. JAMES ADAM & CO'Y,
36 KING ST. EAST, TORONTO.

"A most creditable publication."—*The Globe*.

"Must prove of great service to the native agriculturist."—*Canadian Monthly*.

"A reliable book of reference upon almost every subject connected with the Farmer's daily avocations."—*Stratford Beacon*.

"Will be found a most valuable addition to the library of every Farmer in the community."—*Perth Expositor*.

Mr. M. V. Fahey is the authorized agent for the work, in this section of the country, and will call on the farmers of this township with a view to supplying them with copies.

Discusses the Question,—How shall we raise the greatest amount of marketable produce in a given series of years, with the least proportionate expenditure of Capital and Labour?

A shrewd, intelligent Farmer can Save the price of One Hundred Copies of the work the first year—and the price of Five Hundred Copies in three years.

From Toronto "Mail" Saturday September 12th, 1874.

The author of the Canadian Farmer's Manual of Agriculture has been now for several years before the reading portion of the Canadian agricultural public. We are glad to find that a beginning has here been made towards the providing of standard Canadian books, and a start in the authorship of works specially bearing upon Canadian agriculture. The voluminous works on the field or farm from English pens are "too high" for the farmer here; *au contraire*, the system of farming in Canada is "very low" and requires to be levelled up. The central object of the volume before us is, to use the author's own words, "to demonstrate how farming may be made to pay by the general improvement of the soil, of seeds, and of methods of cultivation." The author writes in an eminently practical strain, so much so indeed that he occasionally lays himself open to the charge of homeliness in his style. This is, however, considering the present status of agriculture in Canada, we consider, no detraction from, but rather an addition to the genuine value of the work before us. The language being simple, has the power which alone belongs to simplicity, of striking home. The writer has never lost sight of the fact that he is writing for a class who, as a class, are neither too highly educated in the principles of their profession, nor possessed of large capital. All theories advanced, and improvements of system recommended, appear to have stood practical test in Canada. We have in every page of the work evidence of a scientific observer, but always kept within bounds by a practical knowledge of farming in Canada. There is in the 572 pages of this book a large amount of information spread over many subjects connected with the farmers' daily avocations. We find a portion devoted to the more common diseases of live stock. The matter contained under this head the writer does not claim as original; but we especially commend the careful selection and happy arrangement of this portion of the manual. We observe also a great number of useful rules and tables of practical value to every farmer. The system of farm accounts, which issued in a separate form by the author and has been before noticed in *The Mail*, we consider one of the most valuable portions of the present work. The newly arrived emigrant will find a practical summary of useful information, and the oldest and most scientific farmer will not rise from a perusal of the book without having added to his stock of knowledge on many points. Messrs. JAMES ADAM & Co., the Publishers, have done their part well. The book is handsomely and strongly got up in full coloured leather. The paper is good, the type clear, and the illustrations, of which there are a large number, well executed. Mr. Whitcombe has fairly earned a place among the authors of Canada.

"It is a work that should be in every Farmer's hands."—*Kingston "British Whig," Sept 9th.*

IN PREPARATION,—Ready Sept. 25th,

Adams' Synchronological Chart OF THE WORLD'S HISTORY,

From 4004 B.C. to A.D. 1874.—Embracing Biblical, Ancient, Medieval and Modern History, contemporaneously arranged for the use of Colleges, Academies, Seminaries, High and Common Schools, Sunday Schools, Students of History, Public and Private Libraries, and all intelligent Families. Showing with dates, the Rise and Fall of Empires, Kingdoms, Dynasties, Races, with their Rulers, the times when Generals, Warriors, Philosophers, Poets, Historians, flourished.—Ancient and Modern Discoveries and Inventions.—The Stream of the World's History from the days of Adam, beautifully and distinctly printed in colours, mounted on Panoramic Rollers, to occupy 3 feet by 2½ feet of wall surface, (total length 22 feet.)

☞ Facts and dates can be more intelligibly impressed upon the mind from a momentary glance at this Chart, than from the study of a hundred volumes. Invaluable alike to the Legislator, the Editor, the Educator, the intelligent man of Business, the School Boy!

PROSPECTUSES READY SHORTLY.

A few intelligent persons, well acquainted with ancient and modern history, required to act as agents for the above.

Apply personally to the publishers,

Messrs. JAMES ADAM & COMPY,

36 KING ST. EAST, TORONTO.

Messrs. J. A. & Co. received a Special Extra Prize at Provincial Exhibition for "The Chart."

Awarded a First Prize at Provincial Exhibition, September, 1874, for "The Manual."

