

Photographic Sciences Corporation

**23 WEST MAIN STREET
WEBSTER, N.Y. 14580
(716) 872-4503**

**CIHM/ICMH
Microfiche
Series.**

**CIHM/ICMH
Collection de
microfiches.**



Canadian Institute for Historical Microreproductions / Institut canadien de microreproductions historiques

© 1981

Technical and Bibliographic Notes/Notes techniques et bibliographiques

The Institute has attempted to obtain the best original copy available for filming. Features of this copy which may be bibliographically unique, which may alter any of the images in the reproduction, or which may significantly change the usual method of filming, are checked below.

L'Institut a microfilmé le meilleur exemplaire qu'il lui a été possible de se procurer. Les détails de cet exemplaire qui sont peut-être uniques du point de vue bibliographique, qui peuvent modifier une image reproduite, ou qui peuvent exiger une modification dans la méthode normale de filmage sont indiqués ci-dessous.

- ☐ Coloured covers/
Couverture de couleur
- ☐ Covers damaged/
Couverture endommagée
- ☐ Covers restored and/or laminated/
Couverture restaurée et/ou pelliculée
- ☐ Cover title missing/
Le titre de couverture manque
- ☐ Coloured maps/
Cartes géographiques en couleur
- ☒ Coloured ink (i.e. other than blue or black)/
Encre de couleur (i.e. autre que bleue ou noire)
- ☒ Coloured plates and/or illustrations/
Planches et/ou illustrations en couleur
- ☐ Bound with other material/
Relié avec d'autres documents
- ☐ Tight binding may cause shadows or distortion
along interior margin/
La reliure serrée peut causer de l'ombre ou de la
distortion le long de la marge intérieure
- ☐ Blank leaves added during restoration may
appear within the text. Whenever possible, these
have been omitted from filming/
Il se peut que certaines pages blanches ajoutées
lors d'une restauration apparaissent dans le texte,
mais, lorsque cela était possible, ces pages n'ont
pas été filmées.
- ☐ Additional comments:/
Commentaires supplémentaires:

- ☐ Coloured pages/
Pages de couleur
- ☐ Pages damaged/
Pages endommagées
- ☐ Pages restored and/or laminated/
Pages restaurées et/ou pelliculées
- ☒ Pages discoloured, stained or foxed/
Pages décolorées, tachetées ou piquées
- ☐ Pages detached/
Pages détachées
- ☒ Showthrough/
Transparence
- ☐ Quality of print varies/
Qualité inégale de l'impression
- ☐ Includes supplementary material/
Comprend du matériel supplémentaire
- ☐ Only edition available/
Seule édition disponible
- ☐ Pages wholly or partially obscured by errata
slips, tissues, etc., have been refilmed to
ensure the best possible image/
Les pages totalement ou partiellement
obscurcies par un feuillet d'errata, une pelure,
etc., ont été filmées à nouveau de façon à
obtenir la meilleure image possible.

This item is filmed at the reduction ratio checked below/
Ce document est filmé au taux de réduction indiqué ci-dessous.

10X	12X	14X	16X	18X	20X	22X	24X	26X	28X	30X	32X
					✓						

The copy filmed here has been reproduced thanks to the generosity of:

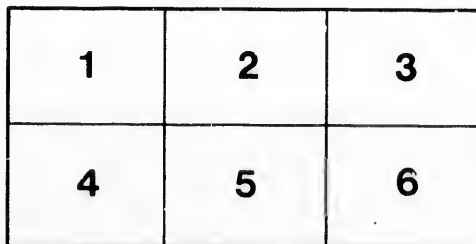
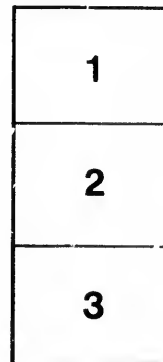
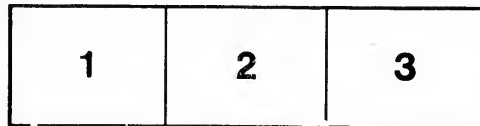
Library of the Public
Archives of Canada

The images appearing here are the best quality possible considering the condition and legibility of the original copy and in keeping with the filming contract specifications.

Original copies in printed paper covers are filmed beginning with the front cover and ending on the last page with a printed or illustrated impression, or the back cover when appropriate. All other original copies are filmed beginning on the first page with a printed or illustrated impression, and ending on the last page with a printed or illustrated impression.

The last recorded frame on each microfiche shall contain the symbol \rightarrow (meaning "CONTINUED"), or the symbol ∇ (meaning "END"), whichever applies.

Maps, plates, charts, etc., may be filmed at different reduction ratios. Those too large to be entirely included in one exposure are filmed beginning in the upper left hand corner, left to right and top to bottom, as many frames as required. The following diagrams illustrate the method:



L'exemplaire filmé fut reproduit grâce à la générosité de:

La bibliothèque des Archives
publiques du Canada

Les images suivantes ont été reproduites avec le plus grand soin, compte tenu de la condition et de la netteté de l'exemplaire filmé, et en conformité avec les conditions du contrat de filmage.

Les exemplaires originaux dont la couverture en papier est imprimée sont filmés en commençant par le premier plat et en terminant soit par la dernière page qui comporte une empreinte d'impression ou d'illustration, soit par le second plat, selon le cas. Tous les autres exemplaires originaux sont filmés en commençant par la première page qui comporte une empreinte d'impression ou d'illustration et en terminant par la dernière page qui comporte une telle empreinte.

Un des symboles suivants apparaîtra sur la dernière image de chaque microfiche, selon le cas: le symbole \rightarrow signifie "A SUIVRE", le symbole ∇ signifie "FIN".

Les cartes, planches, tableaux, etc., peuvent être filmés à des taux de réduction différents. Lorsque le document est trop grand pour être reproduit en un seul cliché, il est filmé à partir de l'angle supérieur gauche, de gauche à droite, et de haut en bas, en prenant le nombre d'images nécessaire. Les diagrammes suivants illustrent la méthode.



TOURISTS' GUIDE TO OTTAWA



DOMINION ENG. CO.

OTTAWA ONT.

THE BRUNSWICK.

122, 124 and 126 Sparks St. Ottawa.

The Best \$1.00 and \$1.50 a day House in Canada.



FIRST-CLASS IN ALL ITS APPOINTMENTS.

ALL ELECTRIC CARS PASS THE DOOR.

IMPORTED LIQUORS AND CIGARS.

JOHN HUCKELL,

PROPRIETOR

75280



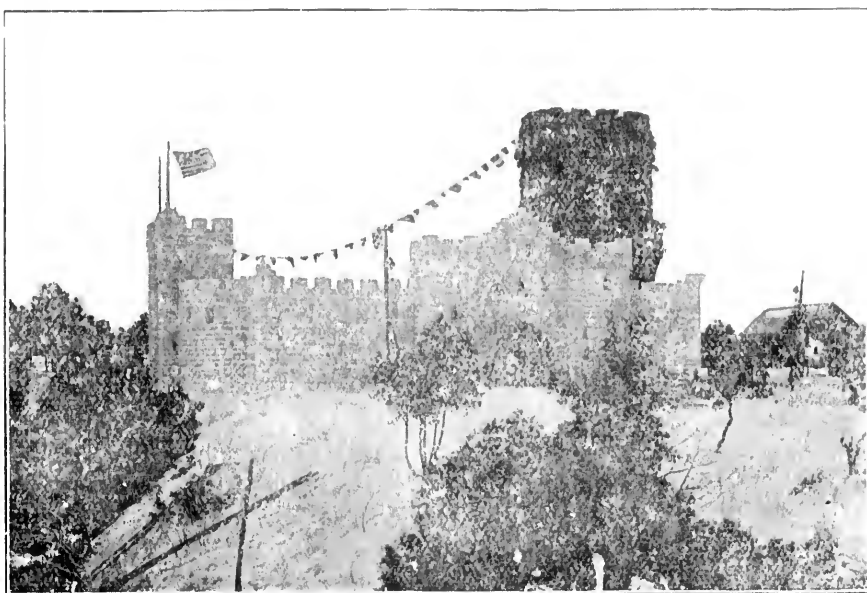
By t
form
bette
acco

the G
in agr
necess
region
unbro
impor
forme
chang
U
which
From
proba
city in
seat o
liamen

TOURISTS' GUIDE TO OTTAWA.



OTTAWA, the Capital City of British America, dates its origin from the commencement of the Rideau Canal, under Lieut. Col. By, Royal Engineers, in the year 1826. Following the troops [that accompanied By to the scene of operations came first the cluster of laborers' shanties which formed around the canal's eastern terminus at Entrance Bay, with the somewhat better dwellings in which the traders who furnished the necessaries of life were accommodated. Situated at the confluence of the Rideau and Gatineau with



ICE CASTLE.

the Grand River (now called the Ottawa), each of them draining districts rich in agricultural and timber resources, and just at the point where it became necessary to rearrange the rafts brought down from the immense timber regions of the Upper Ottawa on account of the impossibility of carrying them unbroken over the Chaudiere Falls, the village grew rapidly to be a town of importance. In 1854, a population of 10,000 being attained, the town was transformed by Parliament into a city under the name it has since borne, the change taking place 1st of January, 1855.

Under the Act in question the city was divided into five wards, each of which became entitled to representation in the Council of three Aldermen. From this period the city has gone forward with leaps and bounds, and has probably made greater headway in proportion to its population than any other city in the Dominion. In 1857 Her Majesty fixed upon it to be the permanent seat of government of United Canada, a decision ratified and confirmed by Parliament. In 1859 the public buildings required for the accommodation of

Butterworth & Company,



Iron Founders,

Hardware Merchants

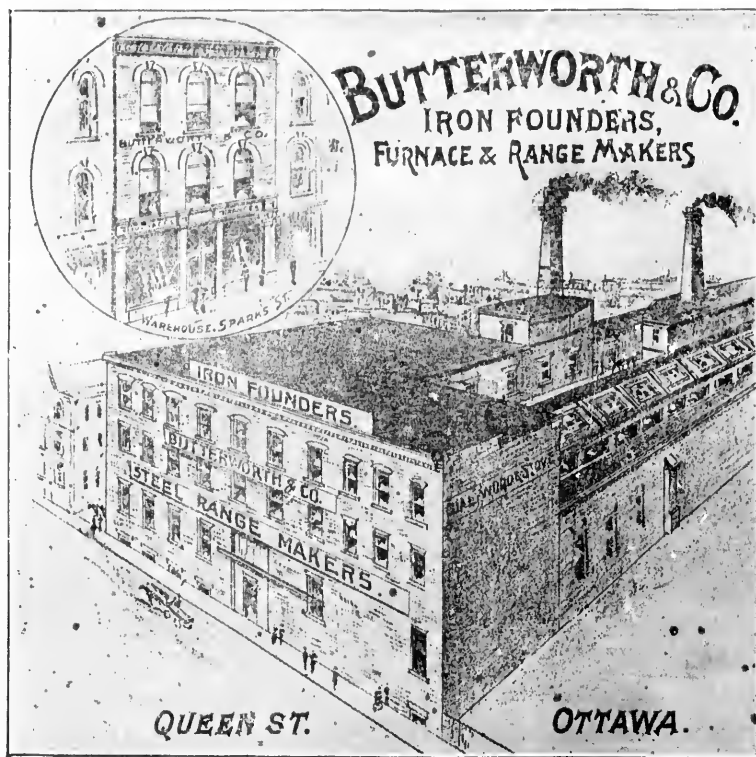
And Heating Engineers.

MANUFACTURERS OF THE CELEBRATED

"Butterworth's" Steel Plate French Ranges.

"Diamond" Hot Water Boilers.

"Diamond" Hot Air Furnaces.



Warehouse, 110 Sparks Street,

= = = Factory, 131, 133 and 135 Queen Street,

Ottawa, - - - Ont.



DEALERS
IN



BUSH BOMBRIGHT & CO.

Street,

BRATED

e French

Boilers.

es.

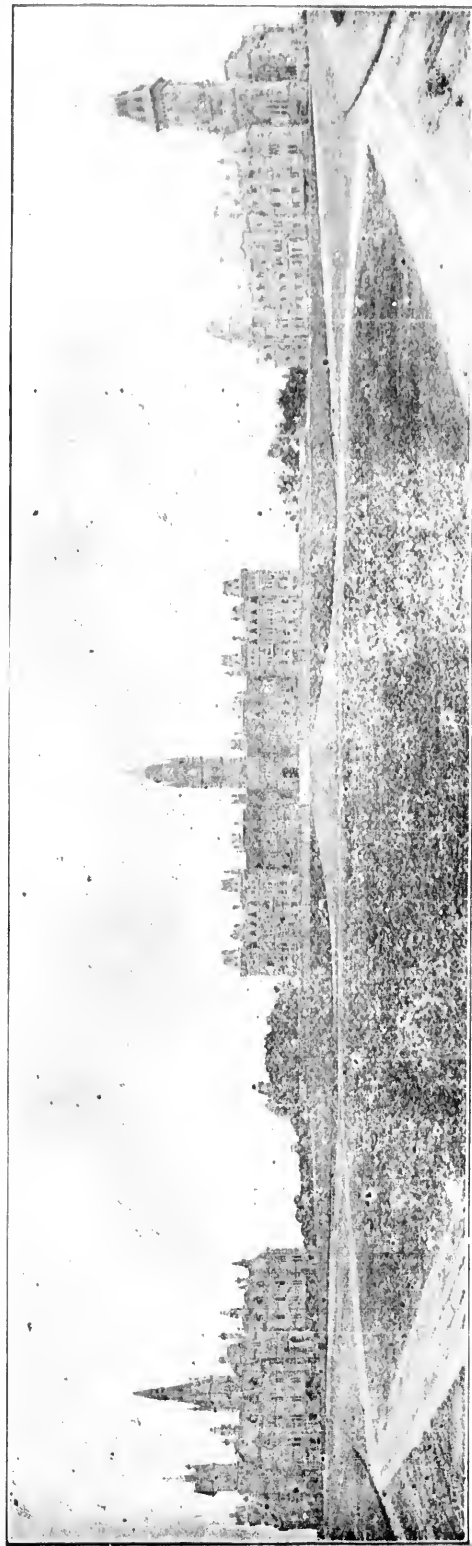
BUSH, BONBRIGHT & CO.,

PIANOS, ORGANS AND SEWING MACHINES.

158 Sparks St., OTTAWA.



DEALERS
... IN ...



PARLIAMENT BUILDINGS.

THE GENUINE Singer Sewing Machines

They have stood the test for over FIFTY YEARS. Our production of to-day are the best the world produces. Our Machines are doing good work after 25 years' actual wear. A new machine every few years is dear at any price. Get the Genuine SINGER and you have a machine for a lifetime. Our machines are direct from our own factories and Fully Guaranteed.

OFFICE AND WARE ROOMS. 143 SPARKS STREET OTTAWA.

Received 34 first Awards at the World's Fair, Chicago, being more than double the number received by all other Sewing Machine Companies Combined.

The Singer M'fg Co.,

W. SHIPMAN, Mgr.

Established 1844.

BRIGHT

— NEWSY

RELIABLE

ENTERPRISING

— Everybody
in Ottawa Reads
The Citizen

THE OTTAWA CITIZEN

Is the only Morning paper
Between Toronto and Montreal.

CLEAN

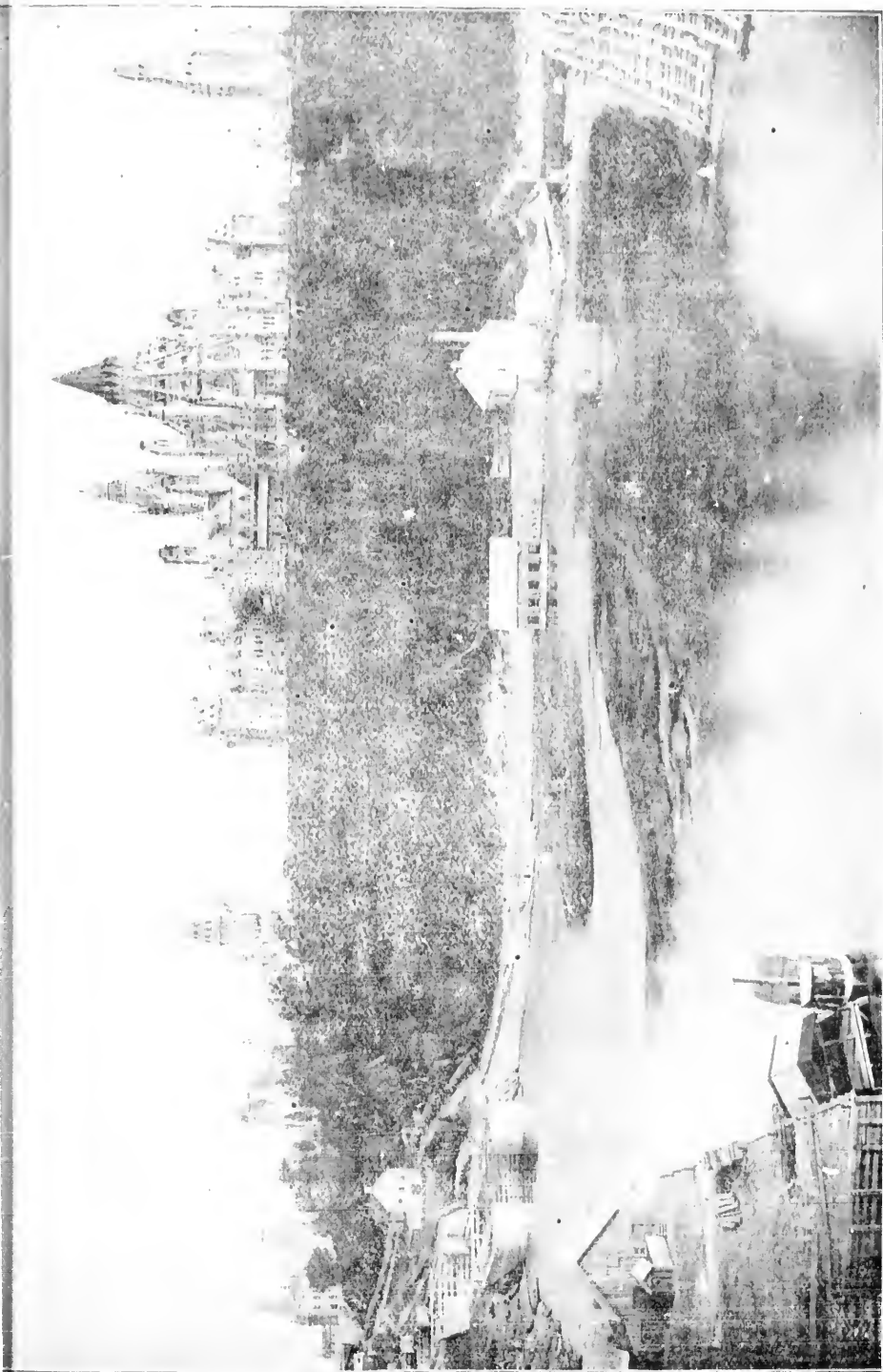
WELL PRINTED

WELL

DISPLAYED

An Advertisement
in the Citizen is
Sure to be Read.

THE OTTAWA CITIZEN CO. LTD PUBLISHERS.



PARLIAMENT BUILDINGS

A. McMILLAN,
JEWELLER —THE LEADING— **AND** **OPTICIAN.**

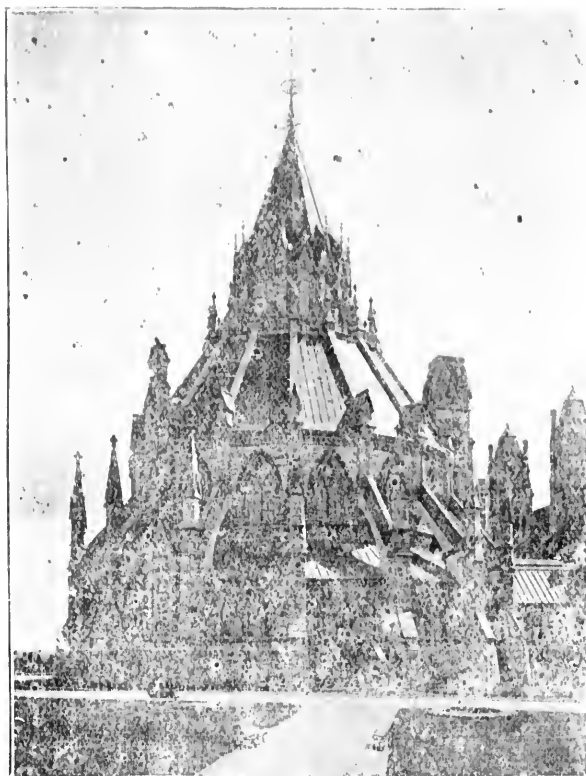
—CARRIES THE LARGEST STOCK OF—

Watches, Clocks, Jewellery and Silverware.

**WHOLESALE AND RETAIL JEWELLER
 82 SPARKS STREET.**

PHONE 1145.

TRY
THE 2 MACS.
THE PEOPLE'S TAILORS FOR YOUR CLOTHING.
PHONE 829.
COR. BANK AND SPARKS STREETS.



LIBRARY.

TRY
THE 2 MACS.
THE PEOPLE'S TAILORS FOR YOUR CLOTHING.
PHONE 829.
COR. BANK AND SPARKS STREETS.

T. W. CURRIER & Co.,

186-190 RIDEAU STREET, OTTAWA.

**MANUFACTURERS AND
 DEALERS IN**

**FURNITURE, CARPETS, OIL CLOTHS,
 CURTAINS, STOVES, Etc.**

Upholstering a Specialty.

WE SELL CHEAP FOR CASH OR ON EASY TERMS OF PAYMENT.

OTTAWA IRON and BRASS FOUNDRY,

Cor. LYON and QUEEN Streets, OTTAWA.

Thos. Lawson, Prop.

MANUFACTURER OF ALL KINDS OF

CASTINGS IN IRON AND BRASS.
AND OF FINEST QUALITY.

Telephone 903.



SIR JOHN MACDONALD MONUMENT.

Noel, Seed & Company,

Tailors and Outfitters,

472 SUSSEX STREET OTTAWA.

Noel, Seed & Company,
Tailors and Outfitters,
472 Sussex Street, Ottawa.

W. H. MARTIN,



THE FASHIONABLE TAILOR.

"THE BROADWAY"

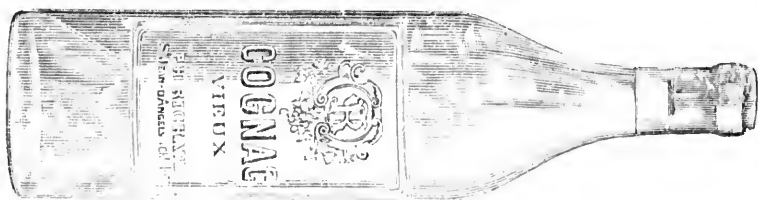
133 SPARKS STREET, OTTAWA.

The Largest and most Select Stock of Suitings and Trouserings to select from in the City.
Charges Moderate. Your Patronage always most Respectfully Solicited.

P. Richard's Cognac.

V.O. V.S.O. V.S.O.P.

The Best Brandy Imported into Canada.

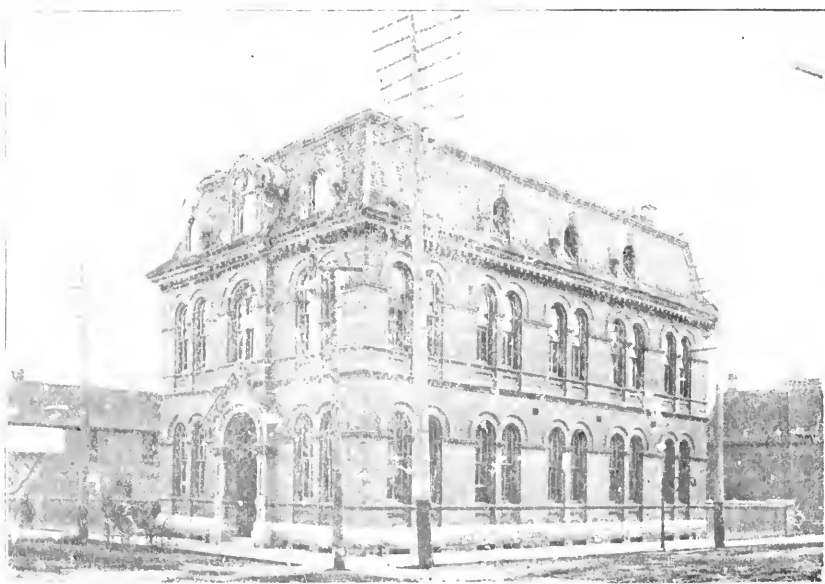


Guaranteed Pure by Analysis.

SOLE AGENTS FOR CANADA.

Laporte, Martin & Cie.

MONTREAL.



FISHERY AND ART GALLERY.

Watches,
Diamonds,
Fine Jewellery.

GRADUATE OPTICIANS.
FINE WATCH REPAIRING. OBSERVATORY TIME.
MANUFACTURING JEWELLERS

Sole Agents for Dominion Coat of Arms Souvenir Spoons.

Olmsted & Hurdman,

Telephone 75.

67 SPARKS STREET.

SOLE AGENTS FOR CANADA.
Laporte, Martin & Cie.
MONTREAL.

ROBERT BROWN,

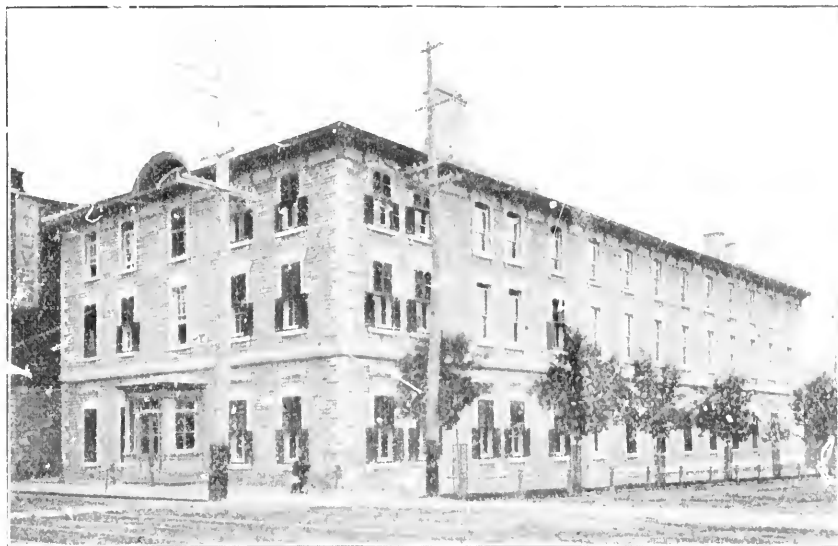
MANUFACTURER AND
 DEALER IN

THE highest grades of Cemetery work in Scotch, Swede, and all other best grades of Marble and Granite Monuments, Headstones, Memorial Tablets, Copings, Post Cemetery Inclosures of all kinds. I have the best improved machinery for polishing granite, which enables me to give the best stock and workmanship at the lowest price consistent with good work. Why give your orders to agents and take inferior stock and work when you can do much better to select at my shop?

ROBERT BROWN, MARBLE & GRANITE WORKS.

NEAR BY-WARD MARKET.

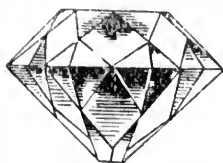
94 GEORGE STREET



GEOLOGICAL SURVEY.

C. P. WILLIMOTT & CO.,

196 SPARKS ST., LAPIDARIES, and MINERALOGISTS. OTTAWA.



All Tourists to Ottawa SHOULD pay a visit to our Store and see the collection of rare Canadian and Foreign precious Stones and Gems, all of which are



CUT
 ON THE PREMISES.



WE ARE THE ONLY FIRM doing our Own Cutting. No visitor should leave the Capital without a Souvenir of Canada.

ALL GOODS CHEERFULLY SHOWN
 INSPECTION EARNESTLY SOLICITED.

RY TIME.

Spoons.



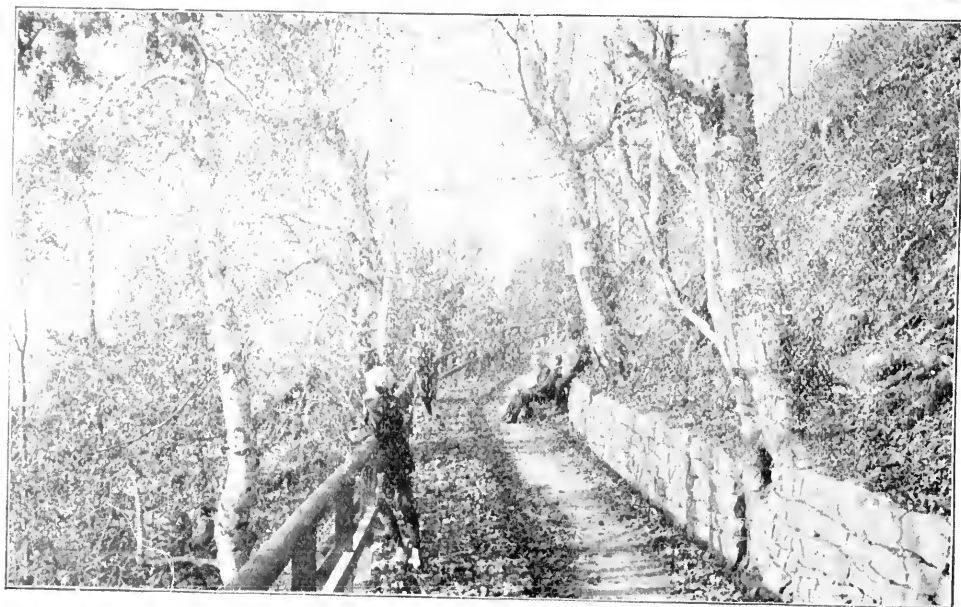
CANADIAN COLLEGE OF MUSIC

COR. BANK & WELLINGTON STS.

ATRION:

His Excellency The Governor-General.

J. EDGAR BIRCH, - - - Principal.



LOVER'S WALK.



If you wish to ride a high record and rank with great stars, equip yourself for so doing by calling on

W. H. FLIGG

THE BEST BICYCLES,
THE BEST CYCLE REPAIR SHOP,
THE BEST STOCK OF CYCLE SUNDRIES.

TO BE FOUND AT

W. H. Fligg's,

65 Sparks St., Ottawa.

MUSIC
ST.

vernor=

Principal.



NDRIES.

igg's,

GARRIOCH, GODARD & Co.,

ELECTRICAL
CONTRACTORS



Write
For
Quotations



Electric Railroads, Lighting, etc.;
Arc, Incandescent and Combina-
tion Systems, Fire Alarm Services,
Private Telephone Systems, Mo-
tors; Dynamos, Lamps, etc.,
General Bell Supplies.

55 Sparks St. = Ottawa.

FOR
FINE
OOTWEAR

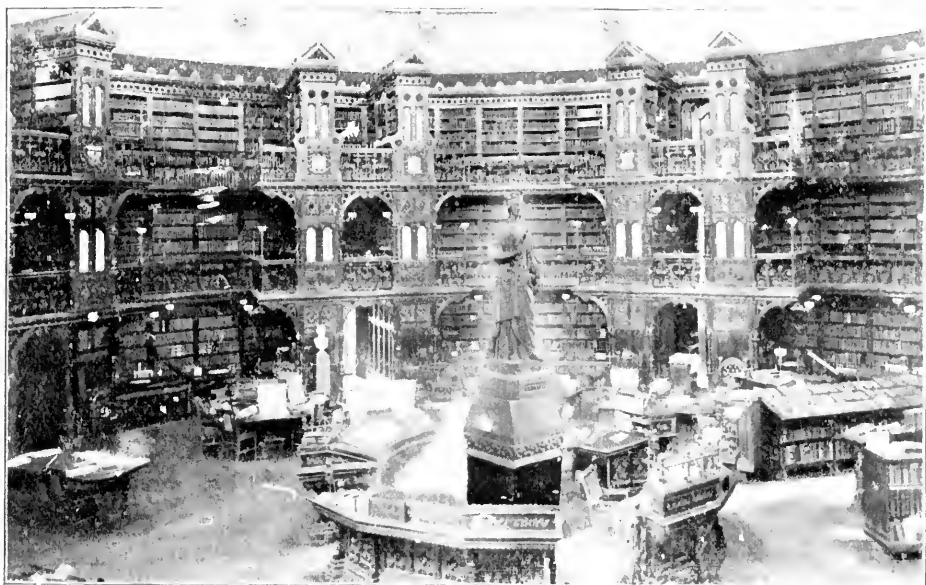


TRY

A. J. STEPHENS,

39 SPARKS STREET.

Opposite "The Russell."



INTERIOR OF LIBRARY.

WM. MASON & SONS.

THE LARGEST AND BEST EQUIPPED MANUFACTURERS
IN EASTERN CANADA OF

 DIMENSION TIMBER

Also Large Manufacturers of

Lumber, Lath AND Shingles.

A large and well assorted stock always on hand to select from. No trouble to quote prices or show goods

Address,
P.O. box 120.

OTTAWA, Canada.

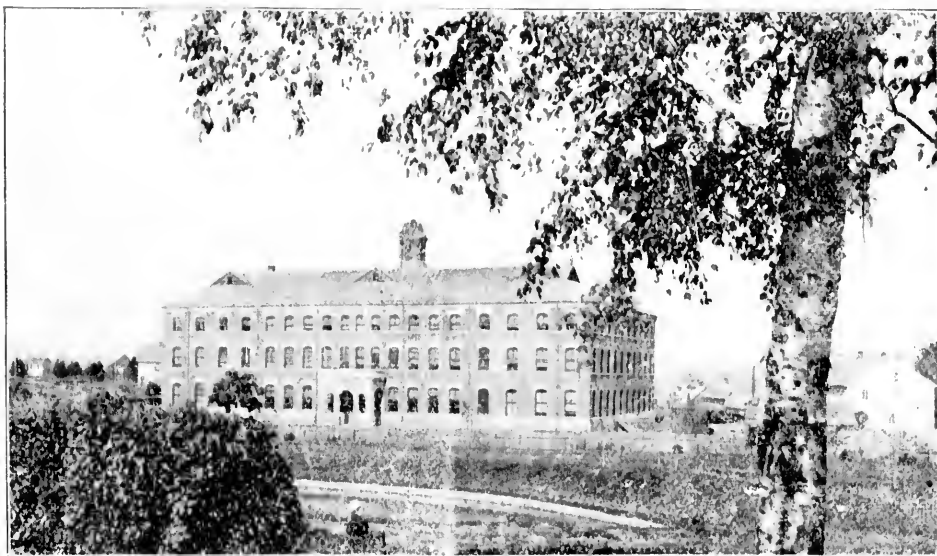
Telephone,
135a.

Parliament and the Civil Service were commenced, and were completed in 1865, causing the removal to Ottawa of an army of public officials with their families. In 1866 Parliament met in Ottawa for the first time, thus further adding to the population and importance of the place. Ottawa added to her greatness and dignity in 1867 by becoming the Capital of the Dominion under the political system then established.

The following table shows the rapid growth of the city:

Incorporated as a town the population of By Town was,	5,000
1854,	10,000
1861,	14,669
1871,	21,545
1881,	31,307
1891,	44,154
1892,	50,000
1895,	60,000

With the addition thereto of the population of Hull, which is practically a suburb of the political metropolis, of 11,265, the population of Ottawa stands at



GOVERNMENT PRINTING BUREAU.

the present moment at 71,265. No other city, east of Winnipeg, has shown such a marvellous rate of growth, and warrants the belief that at the same rate of increase it will not be long before Ottawa will take third place among the cities of the Dominion. She now ranks second in Ontario. In point of wealth and commercial expansion and importance the development and increase go hand in hand. The civic assessment and customs returns are the best guides in this respect. The former shows that while the assessment in 1867 was \$5,167,686, it is now, in 1893, \$18,616,985. During the last ten years the city has nearly doubled in wealth and population. The customs returns show that in 1869-70 the total amount collected was \$98,622, while in 1876-77 the collection had increased to \$205,616, and in 1892 to \$367,629. The value of imports in the year last mentioned was \$3,741,201, and of exports \$1,942,051. Truly Ottawa has no reason to be ashamed of the showing which she is making among the cities of the Dominion.

BANNERMAN & FINDLATER



MARINE, STATIONARY,
HOUSE HEATING,
AND CHEESE FACTORY

BOILERS

Tanks, Girders, Bank Vaults, and
Smoke Stacks.

Sheet Iron Work of Every Description.



554 ELGIN STREET,
COR. ISABELLA, OTTAWA.

72 SPARKS STREET.

ONCE A CUSTOMER,
ALWAYS A CUSTOMER.

AT . . .



MASSON'S
BOOT AND SHOE STORE.



MOTTO:

"Not how cheap, but how
good."



LANGEVIN BLOCK.

THE PEOPLE'S LIFE INSURANCE CO.



HEAD OFFICE,
OTTAWA

INCORPORATED BY SPECIAL ACT OF THE LEGISLATURE.

PRESIDENT—JAMES GILLIS, Esq., CARLETON PLACE.

VICE-PRESIDENT—R. W. BAXTER, Esq., LATE FINANCE DEPT.

SUPERINTENDENT—JAMES WALLACE Esq.

The People's Life Provides the same Reserve as
all other regular Companies in conformity with
the stringent Insurance Laws.

DROLET & Co's



BELFAST GINGER ALE,
LEMON SOUR, GINGER BEER &c.

HAVE NO SUPERIOR IN CANADA.

OFFICE AND FACTORY:

'PHONE 565

NO. 424 SUSSEX STREET, OTTAWA.



POST OFFICE.

HAVE YOU A
GAS COOKING STOVE?



A match is all you need. Can be used winter or summer. No coal, no wood, no ashes, no labor. A Luxury. Call and see them.

OTTAWA GAS Co.,
23 SPARKS STREET.

Mill and Mining Machinery.



Steam Engines, Rock Crushers, Boilers, Derricks,
Steam Pumps, Water Wheels, Brass and Iron
Castings of every description

ALEX. FLECK,
OTTAWA, ONT.

Vulcan Iron Works

F. KEHOE.

BOOKSELLER, NEWSDEALER AND STATIONER,
112 RIDEAU STREET OTTAWA.



CITY HALL.

F. KEHOE.

PICTURE FRAMER.
112 RIDEAU STREET OTTAWA.

A. ROSENTHAL,

Jeweler.



Optician.

87 SPARKS STREET, OTTAWA,

1866.

1895.

OTTAWA BUSINESS COLLEGE

29

Twenty-Nine Years

OF UNINTERRUPTED SUCCESS.



The Business Training School of the
Merchant Princes of the Ottawa
Valley.



Only Teachers

Whose ability and experience have proved
them to be instructors of the highest
order are employed on the staff.

Note Well the Address.

GEORGE MCLAURIN, B.A., LL.D.,
FARRISTER
AND SOLICITOR.
LECTURER ON
COMMERCIAL LAW.

BOOK-KEEPING and Office work
taught from Business transactions.
The most complete and practical
method of teaching ever devised.
Business writing is a specialty.

• **TELEGRAPHY** •

Taught by an experienced operator.

Wm. John Smith.

PRINCIPAL OTTAWA BUSINESS COLLEGE.

BANK STREET.

OTTAWA, ONT

Terms Right.

Catalogue Free.



JOHN KEITH, PRINCIPAL.
INSTRUCTOR IN
OFFICE WORK.
BANKING AND
HIGHER ACCOUNTING.

SHORTHAND

Taught from the most legible, most
rapid and most easily learned Pitmanic
system.

• **TYPEWRITING** •

All the standard machines for Students' practice.



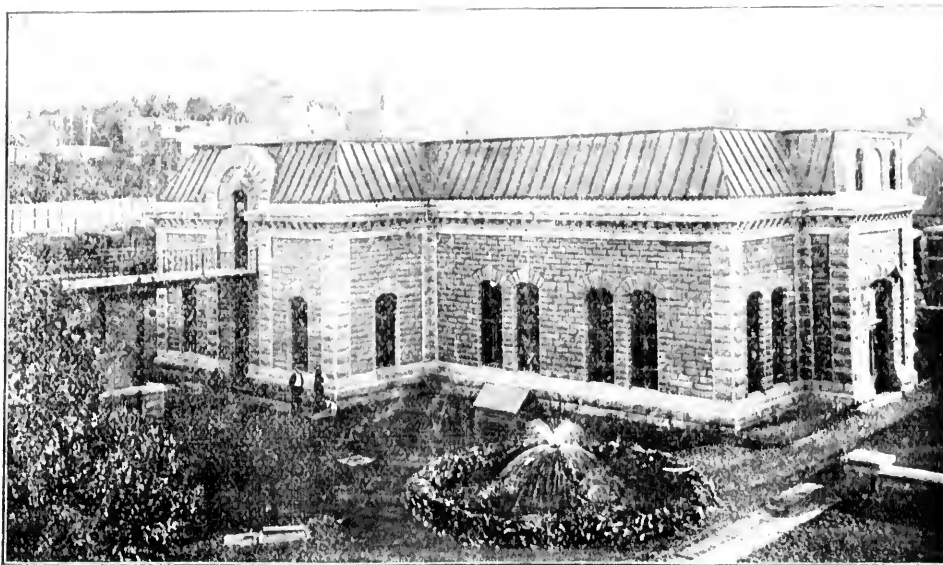
1866.

1895.

STANAWA BUSINESS COLLEGE

National Buildings.

TO the tourist Ottawa's chiefest attractions are the national buildings, erected by the country for the use and accommodation of the Parliament and public servants of Canada, respecting whose artistic merits so much has been said and sung. In approaching Ottawa, from whatever quarter, the Parliament buildings are the most conspicuous. They stand out against the clear sky in all the beauty of seemingly varied architecture. Towers, pinnacles, buttresses and gables are in the distance apparently heaped upon each other, and only become well defined on nearer approach. In speaking of them, Lovell says: "Their splendor, their fine, commanding site, together with the beauty of the surrounding scenery, place them in a very enviable position compared with other structures used for similar purposes, and must ever be objects of interest to the tourist and stranger, and pride to the people of Canada." They are four in number: the Parliament Building, the Eastern Departmental Building, the Western Departmental Building, and the Langevin Block; the last



WATER WORKS,

so called after the Minister of the Crown under whose supervision the building was constructed. With the exception of the Langevin Block, which stands on Wellington Street, almost facing the Parliament House, these buildings are all on the "Hill," forming three sides of a quadrangle; but they are not joined, the vacant spaces at the corners being of considerable extent; the fourth side of the quadrangle opens on Wellington Street. They cover a space, with surrounding walks and drives, of thirty acres. The style of architecture—as Anthony Trollope, the novelist, allows—is almost pure Gothic. The central, or main building is devoted to the service of the Senate and the House of Commons. It stands on the north side of the quadrangle, upon which it presents a front of 472 feet in length and two stories in height above the basement, its breadth being 370 feet at the centre and 181 feet across the main, eastern and western entrances; height of tower over entrance, 220 feet. From this tower—which can be ascended by any one upon application to the proper officer—it is said the view of at least half a dozen counties can be obtained. The Eastern Building has two

THE YORK COUNTY LOAN AND SAVINGS Co.

HEAD OFFICE: TORONTO.

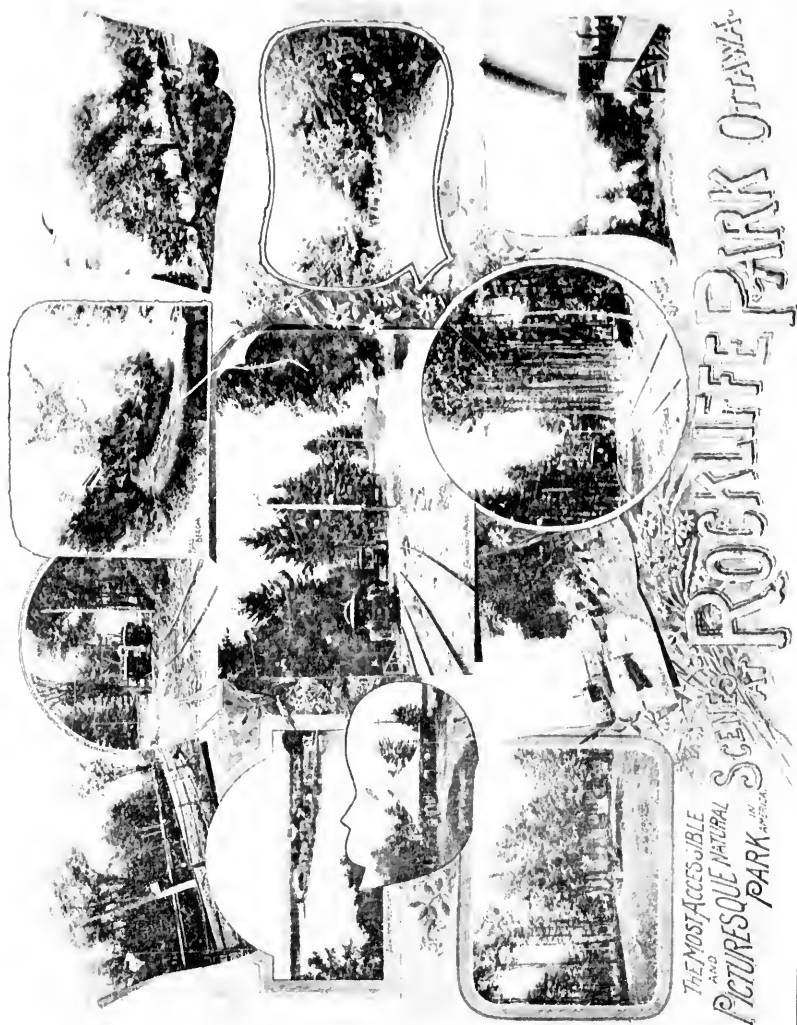
BRANCH OFFICE: 104 SPARKS ST., OTTAWA.

A. W. F. HANCOCK, Supt.

buildings,
the Parlia-
so much
arter, the
against the
pinnacles,
ch other,
of them,
with the
e position
ver be ob-
Canada."
partmental
k; the last



building
stands on
gs are all
oined, the
ide of the
rounding
ony Trol-
n building
It stands
472 feet
eing 370
entrances;
an be as-
e view of
g has two



It is true the saving of a few dollars may in itself be of little moment, but if the habit once becomes fixed, the accumulation will go on and be ultimately successful.

The Object of the York County Loan and Savings Co., is,

- 1st. To help all who become members to secure their own homes.
- 2nd. To promote thrift and saving, especially among the young.
- 3rd. To earn fair profits for its members.

FOUNDERS AND MACHINISTS.

ALL KINDS OF CASTINGS
IN IRON OR BRASS.



Water Wheels,

Steam Engines,

MANUFACTURERS
OF

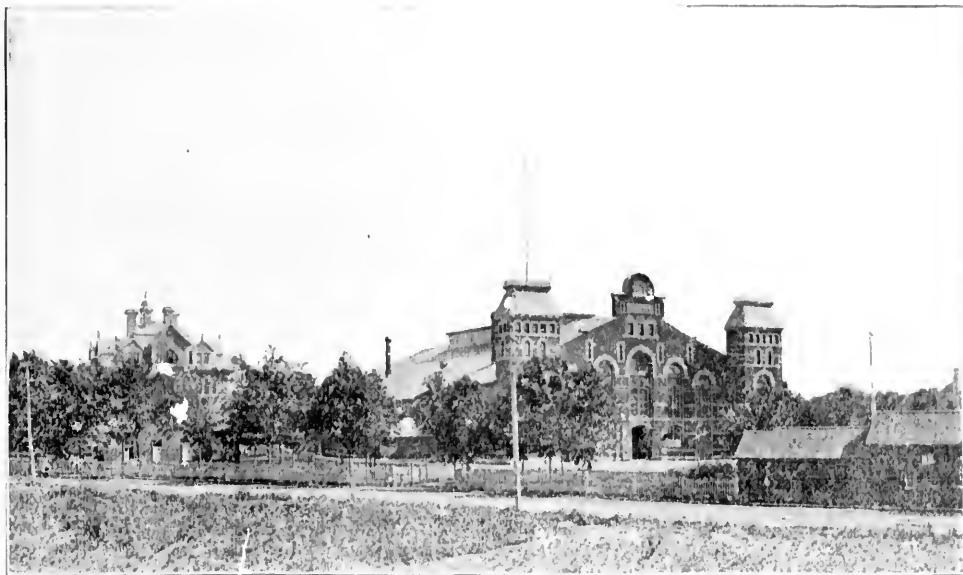
Fire Pumps,

Automatic Hose Reels.

Mill Machinery and Electric Power Plants a Specialty.
VICTORIA FOUNDRY CO.,

Repairing.

OTTAWA, Canada.



DRILL HALL.

THE FIERY CROSS

Treats of Scottish and Canadian History,
Poetry, Music and Folklore.

PROFUSELY ILLUSTRATED.

A Monthly Magazine for Scottish-Canadians.

EDITED AND PUBLISHED BY T. D. MACDONALD, AT 51 SPARKS ST., OTTAWA, ONT.

PORTRAITS AND BIOGRAPHIES

General Information of Scottish-Canadian Societies

EXCEPTIONAL ADVERTISING MEDIUM. PRICE \$1.00 PER YEAR, PAYABLE IN ADVANCE.

OF CASTINGS
OR BRASS.

Hose Reels.

Specialty.

Canada.



Canadian History,
Folklore.

STRATED.

VA, ONT.

Societies

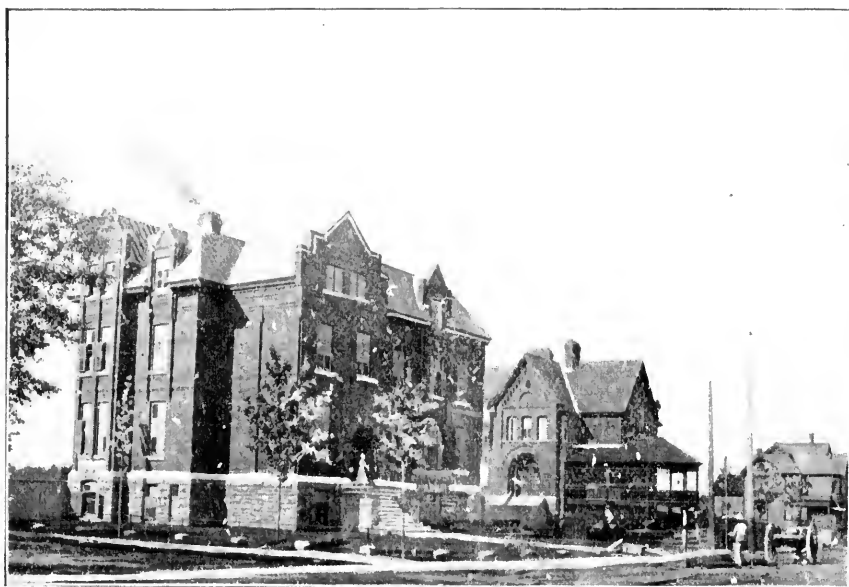
ADVANCE.



EXPERIMENTAL FARM

principle facades at right angles to each other, one 319 feet in length and the other 245 feet on Wellington Street. The Western block is somewhat similar in shape to the Eastern, having a frontage of 220 feet on the Square and 277 feet upon Wellington Street. The public departments are distributed among the several buildings as follows: Eastern Building—Governor-General's office, Privy Council, Secretary of State, Justice, Finance, Interior, and Auditor-General. Western Block—Railways and Canals, Public Works, Militia, Trade and Commerce, Customs, Inland Revenue, Marine and Fisheries, Mounted Police, and Archives. Langevin Block—Post Office, Agriculture, and Indian Affairs. The Patent Office is attached to the Department of Agriculture and in the same building. The Geological and Natural History Survey, with its splendid museum, which is daily attended by many visitors, occupies the old barracks on Sussex Street.

In 1875 an extension was made to the Western building under the administration of Mr. Mackenzie, hence the name of the tower then put up facing the Chaudiere. This tower is 274 feet in altitude, the highest in Ottawa. The

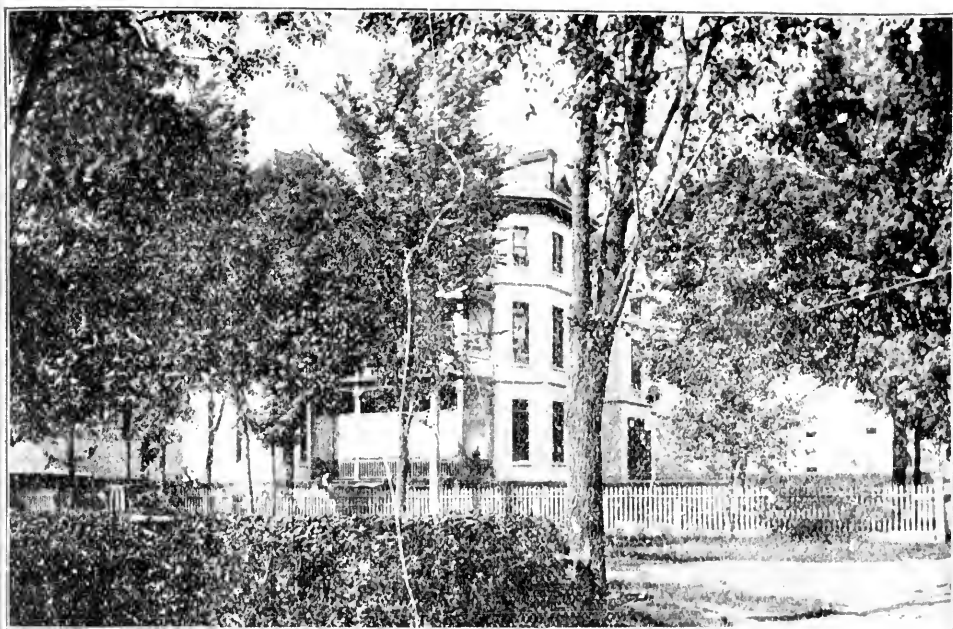


LADY STANLEY INSTITUTE.

Library building in the rear of the Houses of Parliament was not completed until 1877. It was this building—an octagonal one in shape like the chapter-house of a cathedral—which Mr. Trollope declared would alone be worthy a trip across the Atlantic. It is circular inside, and 290 feet in diameter. The main wall is about four feet thick, and possesses an exterior face of sixteen sides, at each angle of which there is a flying buttress spanning the roof of the lean-to and joining the main wall at a height calculated to resist the thrust of the roof. The library is floored with Canadian woods in oak, ash, cherry and walnut. The fittings and bookcases are in pine, the latter in three stories with eight divisions, the spaces forming small alcoves enclosed with iron railing. The library was designed to contain 103,000 volumes, but there are now no less than 155,000 stored therein. A life-size marble statue of the Queen, executed by the late Marshall Wood, an English artist, adorns the centre of the library. A replica of this noble work is at Calcutta. According to Mr. F. A. Dixon, in "Pictures

gth and the
what similar
are and 277
uted among
eral's office.
Auditor-Gen-
n, Trade and
anted Police,
dian Affairs.
and in the
a its splendid
old barracks
the adminis-
up facing the
Ottawa. The

que "Canada," the most advantageous position from which to view these buildings is from Nepean Point. Sufficiently near to take in as a whole, and yet far enough off to be merged in the grace-giving veil of the atmosphere, their effect in the warm glow of the sun as it sets in the West is described as being simply delightful to the painter's eye. Bit by bit their dainty towers and pinnacles and buttresses fade out in the subdued tones of evening, changing from a "symphony in red to a harmonizing gray," 'til moonlight makes them all glorious as a "nocturne in silver and black." The growing wants of the service necessitated the construction of the Langevin Block in 1883, at an expenditure of \$787,000. This is a massive building of the Louis XIV. style, and therefore not in keeping with the others. The total cost of the Ottawa buildings up to 1892 was about \$5,000,000. Among other Federal buildings in Ottawa are those on Bank Street, devoted to the Supreme and Exchequer Courts; that on Sussex Street, before referred to, occupied by the Geological and Natural History Survey; the



PROTESTANT HOSPITAL

building at the corner of O'Connor and Queen Streets, used for the National Art Gallery and Fishery Exhibit; and the Drill Hall on Cartier Square, devoted to military purposes, and in which exists a museum containing a variety of interesting relics connected with the military *regime*.

Scenery.

THE front portions of the city of Ottawa stand on a succession of bluffs, and when viewed from the river are seen to great advantage. From the high cliffs, on which our noblest buildings have been erected, can be witnessed scenes of natural beauty unsurpassed by any on the continent; rich in, all the varied charms of mountain river and forest, and enhanced by the surrounding triumphs of architectural skill. The river Ottawa, on the southern bank of which the capital stands, ranks as the largest of the third class rivers on

the continent: on the opposite bank lies the city of Hull, its more distant cottages blending with farm and forest, while at the back of the whole scene, stretching out interminably to either hand, loom up the dark Laurentian Hills. Below, the river's surface is dotted with steamboats and small craft of every description. Covering the low-lying shores to the west are huge piles of lumber which tell of the chief industry of that portion of the capital, and further up the stream can be seen the boiling masses of water as they hurl themselves over the Chaudiere Falls. To the east the river can be seen for many miles wending its way through field and forest towards the ocean. Close at hand are the timber slides by which the square timber from the Upper Ottawa passes down without damage into the navigable water below. To go down the slides on a crib of timber, is as exhilarating as it is exciting.

Ottawa is divided by the Rideau Canal running through it, and is laid out in wide, regular and uniform streets, which are planted with shade trees and provided with drinking fountains. Its geographical location, when compared



NORMAL SCHOOL.

with other cities, makes Ottawa one of the most easily accessible cities from all points of Canada, and with its seven railroads and many steamboat facilities possesses more and better forwarding capabilities than any of its inland sister cities.

The Rideau Falls, situated about one mile eastward from the centre of the city, formed by the dividing branches of the Rideau River, are exceedingly beautiful cascades. During the period of high water in spring these falls, tumbling perpendicularly down a rocky descent of between forty and fifty feet, are singularly grand and picturesque in appearance.

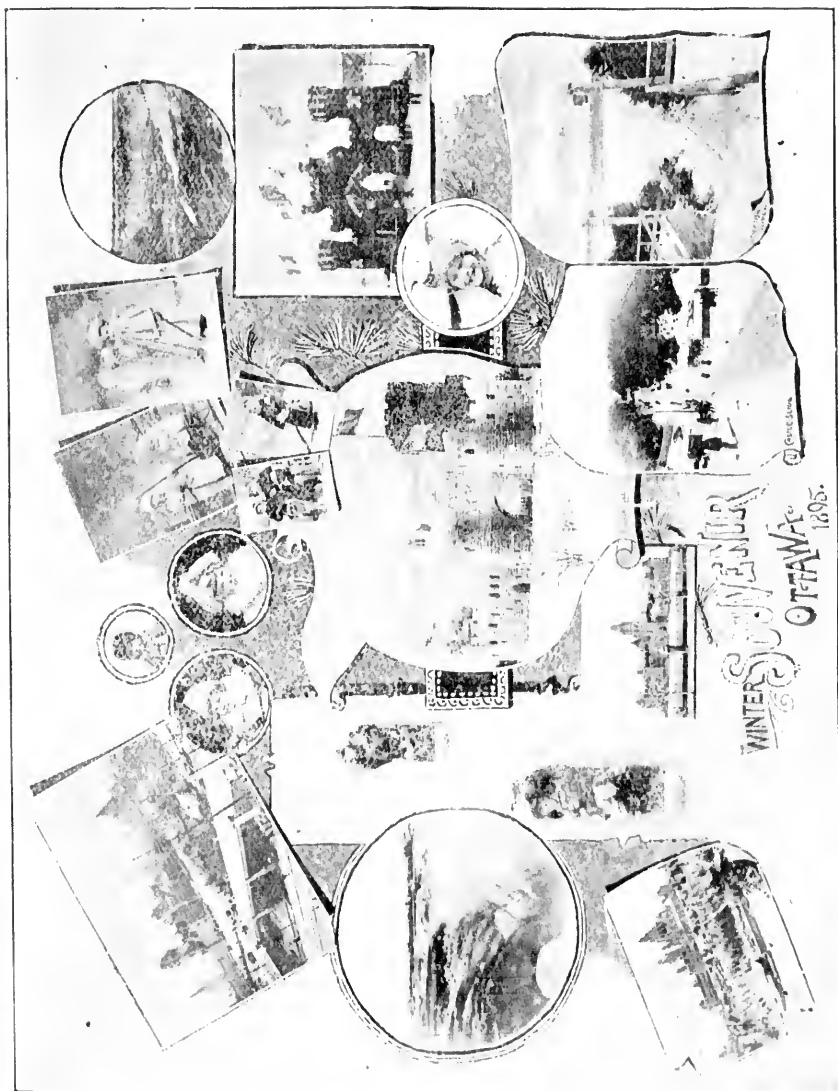
Parks.



OTTAWA has a number of public parks and squares, some of them highly ornamental, and for beauty of surroundings cannot be excelled. Par-

S. J. JARVIS FOR ARTISTIC PHOTOS.

117 SPARKS STREET



J. HERBERT & SON. SLATE FELT AND GRAVEL ROOFERS. CEMENT & ASPHALT.
599 WELLINGTON STREET.

SEE PARLIAMENT BUILDINGS EXECUTED BY.

S. J. JARVIS, Ottawa's Popular Photographer.

IF 



You want wall paper at any price,
 " Washable gold enameled paint,
 " Seno's celebrated floor paint,
 " Ramo's unexcelled floor paint,
 " Mixed paint, all colors guaranteed,
 " Varnish, Oil, or turpentine,
 " Brushes, glass, putty, etc.,
 " A first class job of paper hanging,
 " Or a first class job of painting,
 " Window Shades, choicest for the price—
 " 30 Cents.

In fact if you want anything in the painting trade go to

P. STEWART

THE LEADING PRACTICAL PAINTER AND
 DECORATOR.

236 and 238 SPARKS STREET

 FOR BEST VALUE IN 

Watches, Clocks, Jewellery, etc

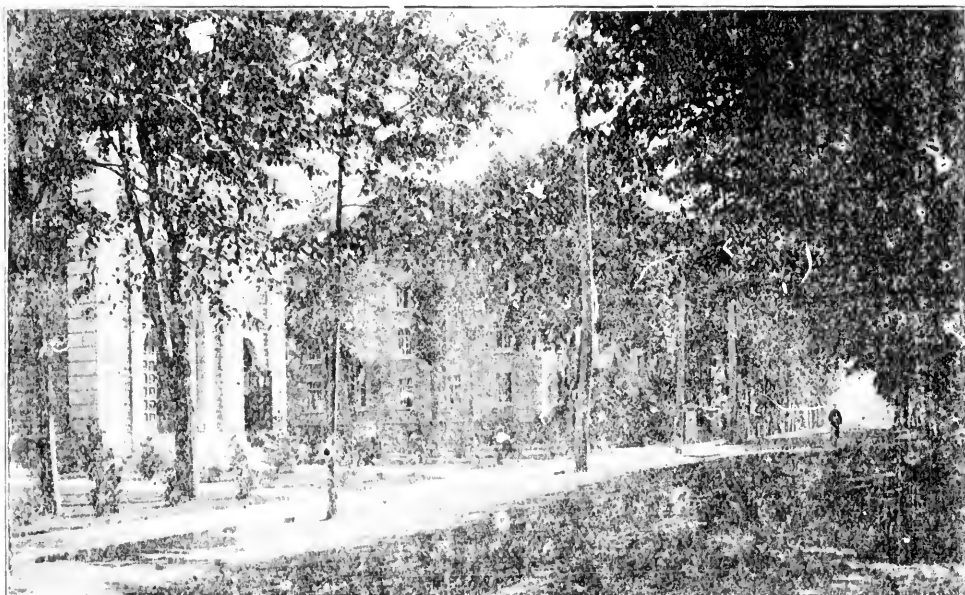
CALL ON

W. H. SPROULE,

135 Sparks St., Ottawa.

Spectacles and Eyeglasses for all sights.
 Eyes tested free of charge.

Manufacturing and Repairing a Specialty.



PETE

GORMAN'S

JERRY

11 O'CONNOR STREET, OTTAWA.



VIENNA CAFE,



Private Dinners and Suppers.

A Spacious Hall in Connection for Dancing. Luncheons Delivered.

MEALS AT ALL HOURS.

Late of Electric St. Railway.

J. R. BOWEN Caterer.

NEW YORK GOLD CURE INSTITUTE.



Double Chloride of Gold Treatment

FOR THE PERMANENT CURE OF

LIQUOR,

COCAINE

OPIUM

and

MORPHINE,

Tobacco Diseases.

104 WELLINGTON STREET,

OPPOSITE PARLIAMENT BUILDINGS.

Manager, E. T. AMES.

Resident Physician, R. Preston Robinson, M.D.

DOMINION

ENGRAVING

CO. LTD.



WE HAVE THE
LARGEST AND
BEST FACILITIES
FOR TURNING OUT
WORK OF A SUPERIOR
QUALITY AT LOWEST
PRICES

phone
1204

DESIGNERS,
ILLUSTRATORS,
AND GENERAL
PHOTO ENGRAVERS.

SAMPLES &
ESTIMATES PROMPTLY
FURNISHED.

15 O'CONNOR ST.
OTTAWA, CAN.

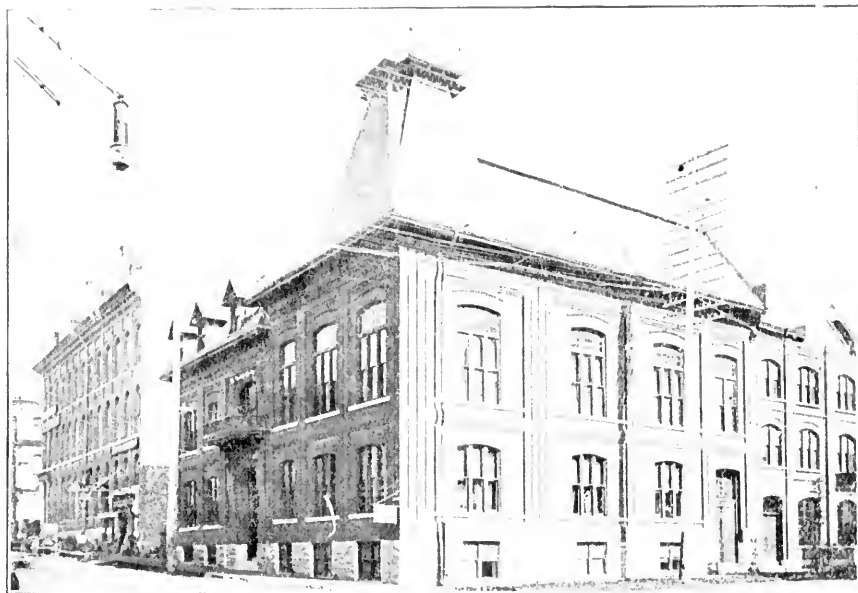
liament Hill has already been mentioned, and a great deal of what has been said of it will apply to Major's Hill Park, both of which are under the control and supervision of the Federal Government.

Rockcliffe Park has become a favorite public resort.

The beauty of the outlook down and beyond the Ottawa River is beyond description. This beautiful place of recreation is now largely patronized in warm weather by the citizens of Ottawa.

Rideau Hall.

THE official place of residence of the Governor-General of Canada for the time being, is an important centre to society people, seeing that around it revolves all that is important and noteworthy in the social life of the Capital. The House is an unpretentious looking structure, but exceedingly cozy and comfortable within, as succeeding viceroys have been pleased to testify.



Y. M. C. A. BUILDING

Rideau Hall is a handsome domain, situated near New Edinburgh, at the other side of the Rideau River, near the falls of that name, and about a mile and a half from the Parliament Building. There are about 78 acres of land surrounding the Hall, which is divided into parks, drives and fields for athletic sports.

The Experimental Farm.

LEGISLATIVE authority was obtained in 1887 for the establishment of five Government Experimental Farms in various parts of the Dominion. The first step taken was the purchase of 500 acres of land outside the city of Ottawa, upon which has been established the Central Farm, which is now in working order as a complete trial farm, the arrangements having all been made according to the newest designs and the latest knowledge. The farm occupies a fine position on the Merivale Road, about two miles from the centre of Ottawa, and can be reached in summer either by boat or land conveyance.

THE WOMAN'S JOURNAL.

SIXTEEN PAGE PAPER.

The Official Organ of the Woman's
Christian Temperance Union of the
Dominion of Canada.

Published Monthly at 26 Albert Street, Ottawa, Ont.
Subscription price 50 cents a year; Clubs of ten to
twenty, 10 cents. Clubs of twenty and upwards,
30 cents.

MISS MARY McKAY SCOTT,
Editor and Publisher.

TEMPERANCE LITERATURE DEPOSITORY, 26 Albert St.,
Ottawa, Ont.—Band of Hope Supplies, Pledges,
Badges, etc. Literature for every department of
Temperance work. French and German Leaflets—
Catalogues on application.

MISS MARY McKAY SCOTT, Custodian.

YOUNG WOMAN'S

Christian Association.

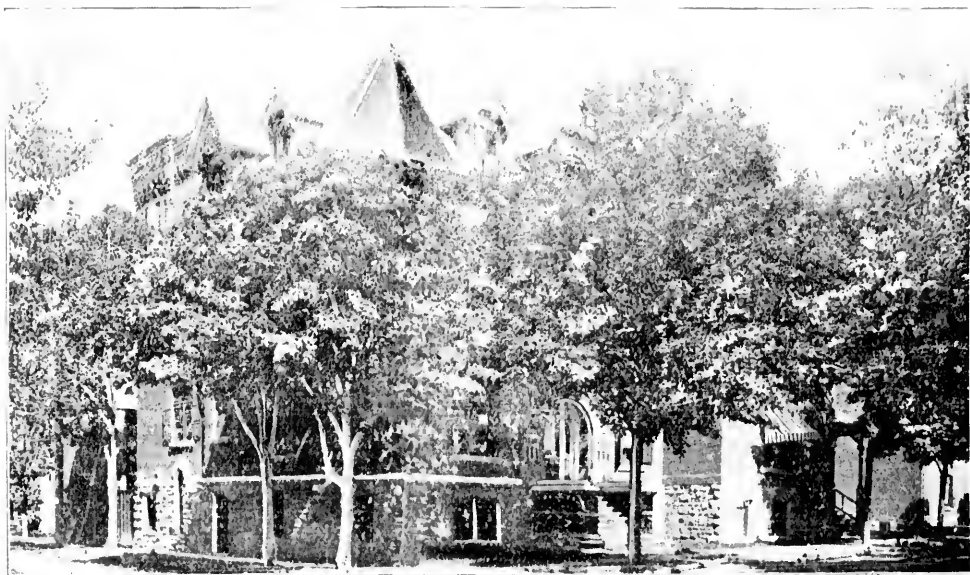
Corner Maria and Metcalfe Streets.

BOARDING DEPARTMENT—Terms, \$3.00, to
\$5.00 per week.

INDUSTRIAL TRAINING DEPARTMENT.—
Classes in Cooking; Household Manage-
ment; Dress Cutting and Fitting, Plain
Needle work. Terms may be had on
application to the Secretary.

EMPLOYMENT DEPARTMENT.

Terms—25 cents for application for
Domestics.



YOUNG WOMAN'S CHRISTIAN ASSOCIATION BUILDING.

The American Wringer Co.,

OTTAWA BRANCH 59 Rideau Street.

.....
Furniture,
Carpets,
Stoves.



CASH OR CREDIT.



COMPLETE HOUSEFURNISHERS.

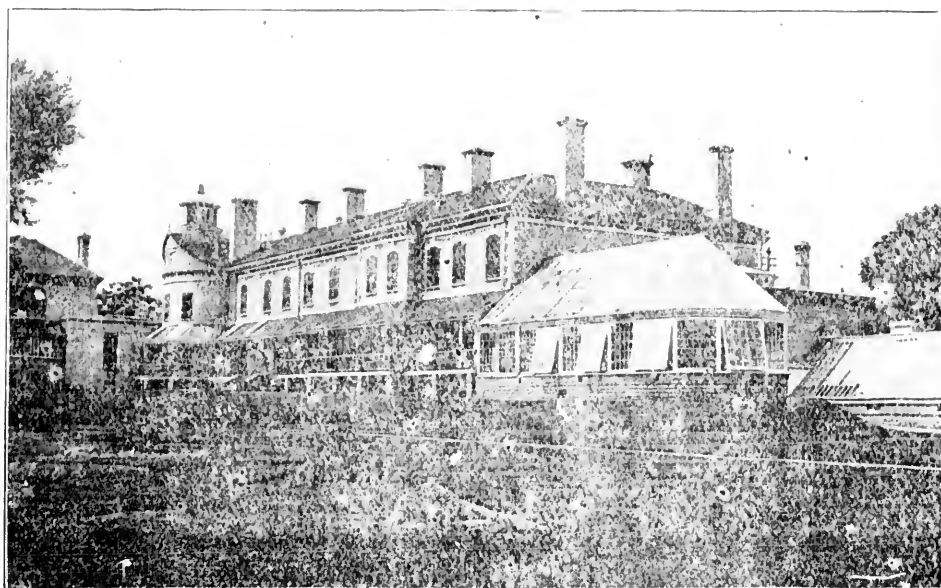
THE BEST BREAD.

JAS. A. WARNOCK,
BAKER TO HIS EXCELLENCY.
THE GOVERNOR-GENERAL.



In Canada.

The above tells the whole story and tells it with exactness.



RIDEAU HALL

A. ARTER,

Estimates given for all kinds of Plain and Decorative Work. Ready Mixed Paints, all Colors. Wall Papers, all kinds.

**House and
Sign**

PAINTER.

SIGN PAINTING AND NATURAL WOOD FINISHING
SPECIALTIES.

COR. LYON AND SPARKS STREETS, OTTAWA.

NA
BREAD
R BAKER

..... FOR RELIABLE

Watches, Clocks & Jewellery

—GO TO—

Allan H. Fraser,

152 Bank Street,

OPPOSITE SLINN'S BLOCK.

WATCHMAKER, JEWELLER & OPTICIAN.

Eyes examined free. Wedding Rings and Jewellery made to order.

P.S.—Diamond Setting and Watch Repairing a Specialty.

Don't Read This !

Don't read this dear people, unless you wish to know that you should get your Photo: and the best place to go is

THE SNIDER STUDIO,

131 Bank Street, Ottawa.

ALL STYLES AND SIZES. PRICES RIGHT.

A. S. DICKENSON

Proprietor.



RIDEAU FALLS.

Law Bros. & Co.,



GALEDONIAN FOUNDRY AND MACHINE SHOPS.

HYDRANTS, VALVES, WATER WORKS SUPPLIES, SPECIALS,
SHAFTING AND MILL MACHINERY.

Also castings of every description.

Rideau Falls, OTTAWA, ONT.

ER.
FINISHING

LAVERDURE.

E. J. LAVERDURE

E. G. LAVERDURE & CO.,

ESTABLISHED 1865.

HARDWARE MERCHANTS.

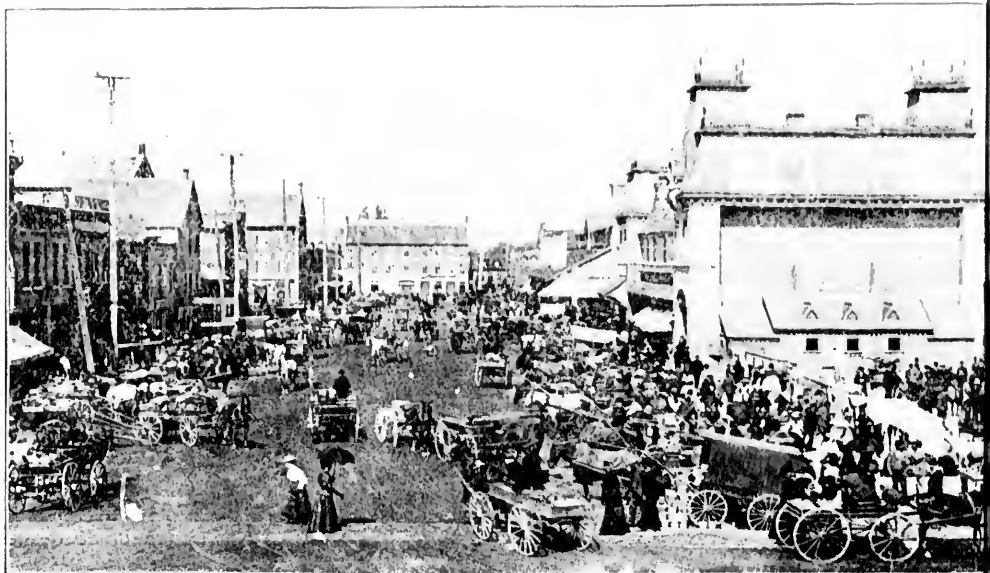
NEAR BY-WARD
MARKET.

Telephone 102.

And supplies for Plumbers, Tinsmiths, Engineers, Gas and Steam Fitters; Aluminum; Builders' Hardware, Iron and Lead Pipes, Black, Galvanized and Tinned Iron, Tin Plates, Brass Goods, Zinc, Metallic Shingles and Siding, Oils, Paints and Glass, Harvesting Tools, Stoves, Belting, Cheese Factory Supplies, Horse, Well, and Force Pumps, Saws, Copper and Brass, etc. Tools of all kinds. Workers in Iron, Tin, Copper and Zinc.

71, 73, 75 WILLIAM STREET,

OTTAWA, Ont.



BY WARD MARKET.

WHEN COMING TO OTTAWA DO NOT FAIL TO VISIT

KETTLE ISLAND PARK.

TAKE ELECTRIC CARS TO GET THERE

15 Cents Return.

residence

340 Waverley Street.

PHONE. 946.

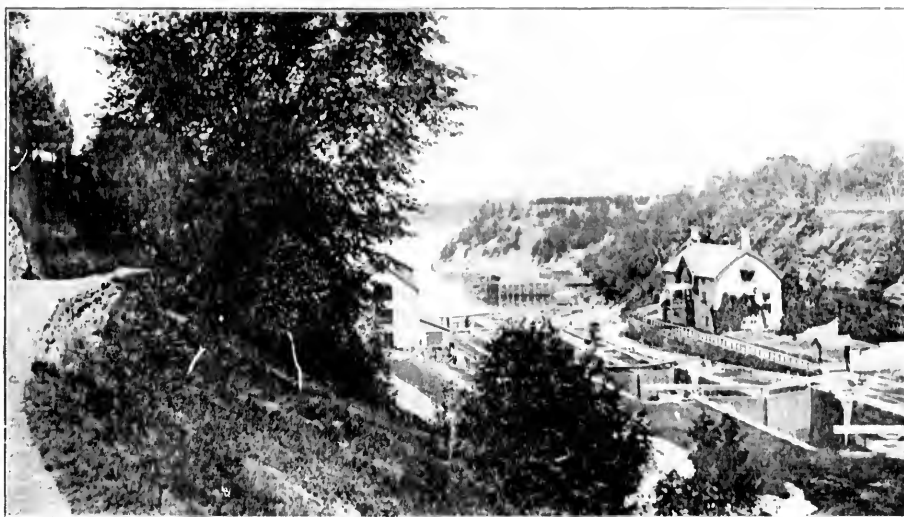
GEORGE BAILEY.

Locksmith, Etc.,

234 Wellington Street, Ottawa.



BICYCLE FITTINGS AND BICYCLE REPAIRING.



TELEPHONE 514.



We store furniture and Merchandise in clean, dry ventilated locked compartments for long or short periods at reason-



able rates. Negotiable Warehouse Receipts are issued for everything placed with us.

Capital Warehousing Co.,

561 SUSSEX STREET, OTTAWA.



"A PURELY SELF-VARYING SYSTEM."

The only one in use with which identical results are obtained by using either short or long shoulder measurers. It is a New System based on New Principles, and is arranged in the most concise manner consistent with scientific simplicity.

TERMS OF INSTRUCTION.

Complete course,	Gentlemen's Garments	\$100.00
" " " "	Ladies' Garments	100.00
" " " "	To practical Cutters	50.00
" " " "	" Grading	30.00
" " " "	How to use Block Patterns	50.00
Coats (to cutters only)		30.00
Trousers		15.00
Vests		10.00
Instructions daily (except Sunday) from 9 a.m. to 5 p.m. For further particulars address or call on		

THE JER. JACKLIN CO

133 SPARKS ST., OTTAWA, ON T

JACKLIN'S

SELF-VARYING AD-MEASURE-MENT SYSTEM.

A practical Text-Book copiously illustrated with diagrams of all ordinary and special Garments—Coats, Vests, Trousers, Breeches, Leggings, Gaiters, etc., also Clerical Garments, Firemen's and Policemen's Uniforms; Juvenile Garments, Shirts and Drawers, etc., with full instructions how to Cut and Trim, and Make and Press everything. It is the most comprehensive work of the century, and the price is

TEN DOLLARS.

READY FOR DELIVERY JANUARY 1, 1896.



