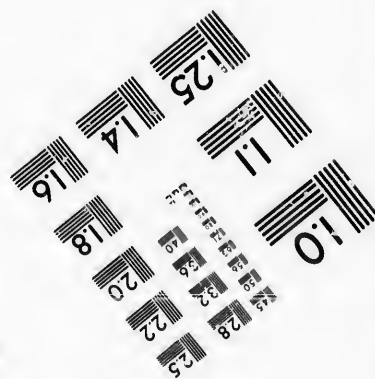
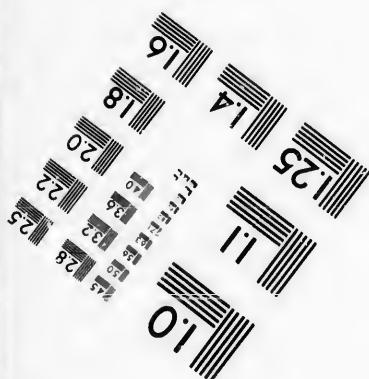
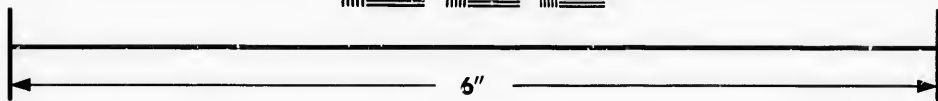
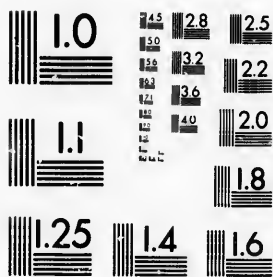


**IMAGE EVALUATION
TEST TARGET (MT-3)**



**Photographic
Sciences
Corporation**

23 WEST MAIN STREET
WEBSTER, N.Y. 14580
(716) 872-4503

15
18
20
22
25
28
32
36
40
45
50

**CIHM/ICMH
Microfiche
Series.**

**CIHM/ICMH
Collection de
microfiches.**



Canadian Institute for Historical Microreproductions / Institut canadien de microreproductions historiques

15
18
20
22
25
28
32
36
40
45
50

© 1987

Technical and Bibliographic Notes/Notes techniques et bibliographiques

The Institute has attempted to obtain the best original copy available for filming. Features of this copy which may be bibliographically unique, which may alter any of the images in the reproduction, or which may significantly change the usual method of filming, are checked below.

L'Institut a microfilmé le meilleur exemplaire qu'il lui a été possible de se procurer. Les détails de cet exemplaire qui sont peut-être uniques du point de vue bibliographique, qui peuvent modifier une image reproduite, ou qui peuvent exiger une modification dans la méthode normale de filmage sont indiqués ci-dessous.

- Coloured covers/
Couverture de couleur
- Covers damaged/
Couverture endommagée
- Covers restored and/or laminated/
Couverture restaurée et/ou pelliculée
- Cover title missing/
Le titre de couverture manque
- Coloured maps/
Cartes géographiques en couleur
- Coloured ink (i.e. other than blue or black)/
Encre de couleur (i.e. autre que bleue ou noire)
- Coloured plates and/or illustrations/
Planches et/ou illustrations en couleur
- Bound with other material/
Relié avec d'autres documents
- Tight binding may cause shadows or distortion
along interior margin/
La reliure serrée peut causer de l'ombre ou de la
distorsion le long de la marge intérieure
- Blank leaves added during restoration may
appear within the text. Whenever possible, these
have been omitted from filming/
Il se peut que certaines pages blanches ajoutées
lors d'une restauration apparaissent dans le texte,
mais, lorsque cela était possible, ces pages n'ont
pas été filmées.
- Additional comments:/
Commentaires supplémentaires:

- Coloured pages/
Pages de couleur
- Pages damaged/
Pages endommagées
- Pages restored and/or laminated/
Pages restaurées et/ou pelliculées
- Pages discoloured, stained or foxed/
Pages décolorées, tachetées ou piquées
- Pages detached/
Pages détachées
- Showthrough/
Transparence
- Quality of print varies/
Qualité inégale de l'impression
- Includes supplementary material/
Comprend du matériel supplémentaire
- Only edition available/
Seule édition disponible
- Pages wholly or partially obscured by errata
slips, tissues, etc.. have been refilmed to
ensure the best possible image/
Les pages totalement ou partiellement
obscurcies par un feuillet d'errata, une pelure,
etc., ont été filmées à nouveau de façon à
obtenir la meilleure image possible.

This item is filmed at the reduction ratio checked below/
Ce document est filmé au taux de réduction indiqué ci-dessous.

10X	12X	14X	16X	18X	20X	22X	24X	26X	28X	30X	32X
						/					

The copy filmed here has been reproduced thanks to the generosity of:

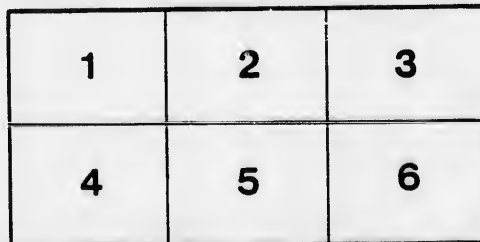
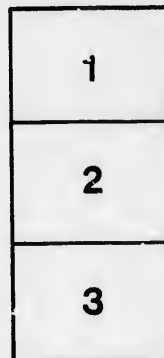
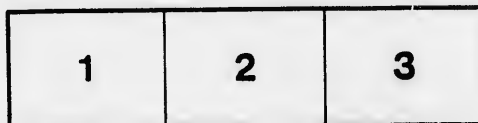
D. B. Weldon Library
University of Western Ontario
(Regional History Room)

The images appearing here are the best quality possible considering the condition and legibility of the original copy and in keeping with the filming contract specifications.

Original copies in printed paper covers are filmed beginning with the front cover and ending on the last page with a printed or illustrated impression, or the back cover when appropriate. All other original copies are filmed beginning on the first page with a printed or illustrated impression, and ending on the last page with a printed or illustrated impression.

The last recorded frame on each microfiche shall contain the symbol \rightarrow (meaning "CONTINUED"), or the symbol ∇ (meaning "END"), whichever applies.

Maps, plates, charts, etc., may be filmed at different reduction ratios. Those too large to be entirely included in one exposure are filmed beginning in the upper left hand corner, left to right and top to bottom, as many frames as required. The following diagrams illustrate the method:



L'exemplaire filmé fut reproduit grâce à la générosité de:

D. B. Weldon Library
University of Western Ontario
(Regional History Room)

Les images suivantes ont été reproduites avec le plus grand soin, compte tenu de la condition et de la netteté de l'exemplaire filmé, et en conformité avec les conditions du contrat de filmage.

Les exemplaires originaux dont la couverture en papier est imprimée sont filmés en commençant par le premier plat et en terminant soit par la dernière page qui comporte une empreinte d'impression ou d'illustration, soit par le second plat, selon le cas. Tous les autres exemplaires originaux sont filmés en commençant par la première page qui comporte une empreinte d'impression ou d'illustration et en terminant par la dernière page qui comporte une telle empreinte.

Un des symboles suivants apparaîtra sur la dernière image de chaque microfiche, selon le cas: le symbole \rightarrow signifie "A SUIVRE", le symbole ∇ signifie "FIN".

Les cartes, planches, tableaux, etc., peuvent être filmés à des taux de réduction différents. Lorsque le document est trop grand pour être reproduit en un seul cliché, il est filmé à partir de l'angle supérieur gauche, de gauche à droite, et de haut en bas, en prenant le nombre d'images nécessaire. Les diagrammes suivants illustrent la méthode.

Clerk of the Peace

MUNICIPALITY
—OF—
WESTMINSTER,
COUNTY OF MIDDLESEX,
LIST OF VOTERS
FOR 1879.

VOTERS' LIST ACT.

SECTION 6.—The Sheriff shall immediately upon the receipt of his copies cause one of them to be posted up in a conspicuous place in the Court House; the Clerk of the Peace upon the receipt of his copies shall cause one of them to be posted up in a conspicuous place in his office; every Public or Separate School Master or Mistress shall in like manner post up one of his or her copies on the door of the School House; and every Postmaster shall post up one of his copies in his Post Office.

London, Ont.:

ADVERTISER STEAM PRESSES, RICHMOND STREET.
1879.

plus 4/79 of Johnson

Com
the nor
ween L

Per

P.O. Assess	No. of Roll
	29
7 J	30
7 J	31
8 J	57
8 J	67
8 J	68
8 J	170
8 J	175
8	178
8 J	179
8 J	194
9 J	205
8 J	118

9 J	304
9 J	305
9 J	306
9 J	307
7	45
8 J	61
8 J	65
8	81
8	83
8 J	85
8 J	87
8	90
8	91
8 J	92
8 J	101
8 J	110
8 J	111
8	112
8 J	113
8 J	114
8 J	115
8	116
8 J	117

oters' List, Westminster, 1879.

SCHEDULE OF POST OFFICES.

No. 1 London.
 " 2 Askin.
 " 3 St. James' Park.
 " 4 Byron.
 " 5 Lambeth.
 " 6 Tempo.

No. 7 Glanworth.
 " 8 Belmont.
 " 9 Derwent.
 " 10 Nilestown.
 " 11 Wilton Grove.
 " 12 White Oak.

FIRST WARD.

(COMPOSED OF POLLING DIVISIONS NOS. 1 AND 2.)

POLLING DIVISION NO. 1.

Comprising that part of the Township bounded on the East by the Eastern Boundary of the Township, the north by the Concession Line, between the 3rd and 4th Concessions, on the West by the Side Line between Lots 12 and 13, and on the South by the Southern Boundary of the Township.

PART FIRST.

Persons entitled to vote at both Municipal Elections and Elections to the Legislative Assembly.

No. on P.O. Assessment Roll.	Name.	Con.	No. of Lot or Part Lot.	No. on P.O. Assessment Roll.	Name.	Con.	No. of Lot or Part Lot.
7	29 Buchanan Wm, sen, o . . .	8	pt 12	8	180 Carrothers Michael, o . . .	pt 5	pt 6
7 J	30 Buchanan Malcolm, f s . .	8	pt 12	8 J	181 Carrothers Paul, f s . . .	pt 5	pt 6
7 J	31 Buchanan Wm, jun., f s . .	8	pt 12	8 J	182 Carrothers Amos, f s . . .	pt 5	pt 6
8 J	57 Black Wm, o	8	pt 4	9 J	209 Craig James, o	pt 5	pt 2
8 J	67 Barrett Thomas, t	7	pt 1	9 J	210 Craig Robert, f s	pt 5	pt 2
8 J	68 Buchanan James, o	7	pt 1	9 J	225 Casey S S, o	pt 4	pt 5
8 J	170 Beattie James, o	5	pt 8	9 J	231 Campbell Hugh, t	pt 5	pt 5
8 J	175 Bratt Jessie, o	6	pt 7	9 J	234 Carrothers David, o	pt 5	pt 6
8	178 Bratt Samuel, o	6	pt 6	9 J	235 Carrothers John W, f s . .	pt 5	pt 6
8 J	179 Bratt G A, f s	6	pt 6	9 J	236 Carrothers A E, o	pt 5	pt 6
8 J	194 Barton H C, o	6	pt 2	9	237 Carrothers Thos, o	4	pt 6
9 J	205 Barton Ensley, o	5	pt 1	9 J	238 Carrother Wm, f s	4	pt 7
8 J	118 Brunton John, o	7	pt 6	9	239 Carrothers Nathaniel sr, o	4	pt 7
				9 J	240 Carrothers Charles, f s . .	4	pt 7
9 J	304 Cowan Hugh, o	4	pt 2	8	63 Davidson Samuel, o	7	pt 1
9 J	305 Cowan Wm, f s	4	pt 2	8	71 Doan Orlando, o	7	pt 1
9 J	306 Cowan John, f s	4	pt 2	8 J	66 Dyer Wm, o	7	pt 1
9 J	307 Cowan Charles, f s	4	pt 2	8 J	92 Deacon John R, t	7	pt 1
7	45 Cameron Arch, o	n 1/7	pt 8	8 J	108 Dobb Wm, o	7	pt 2
8 J	61 Creamer John, o	pt 7	pt 1	9 J	219 Dart Samuel, t	5	pt 4
8 J	69 Carrothers John C, t	pt 7	pt 1	9 J	221 Dumaw Joseph, sen, o . . .	5	pt 4
8	81 Carrothers Mark, o	pt 7	pt 1	9	222 Dumaw Joseph, jun, o . . .	4	pt 4
8	85 Cooper Able, o	pt 7	pt 1	9 J	223 Dumaw Joseph, o	4	pt 4
8 J	88 Collard Richard, o	pt 7	pt 1	9 J	224 Dumaw Jonathan, o	4	pt 4
8 J	89 Collard Biram, o	pt 7	pt 1	11 J	256 Duguid John, o	5	pt 11
8	90 Collie Wm, t	pt 7	pt 1	11 J	257 Duguid Wm, o	5	pt 11
8	91 Cole Joseph, o	pt 7	pt 1				
8 J	93 Campbell James, o	pt 7	pt 1	8 J	165 Elliott John, o	6	pt 9
8 J	100 Creamer R, o	pt 7	pt 1	8 J	166 Elliott James F, f s	6	pt 9
8 J	113 Cousins Wm, o	pt 6	pt 5	8 J	167 Elliott C H, f s	6	pt 9
8 J	114 Cousins John, o	pt 5	pt 6	8 J	168 Elliott John H, o	6	pt 11
8	116 Campbell Robert, o	pt 7	pt 5	8	183 Eden Wm, t	6	pt 5
8 J	117 Campbell Donald, o	pt 7	pt 7	8 J	184 Eden James, t	5	pt 5
8 J	120 Campbell Duncan, o	pt 6	pt 7				
8 J	123 Cameron Hector, o	pt 7	pt 7				
8	123 Cameron Arch, f s	s 1/7	pt 8				
8 J	177 Campbell Neil, t	pt 5	pt 7				

FIRST WARD—DIVISION NO. 1.

No. on P.O. Assesment Roll	Name	Con.	No. of Lot or Part Lot	No. on P.O. Assesment Roll	Name	Con.	No. of Lot or Part Lot
8 J 102	Olmstead Geo, o	7	pt 1	8	86 Simpson John A, t	7	pt 1
8 J 185	Odell Cornelius, f s	6	pt 4				
8 J 186	Odell Peter, f s	6	pt 5				
				7 J 32	Trigger Thos, o	8	pt 11
				7 J 33	Trigger Wm, o	8	pt 11
				7 J 49	Taylor Arch, o	7	pt 6
7	37 Palmer Francis, sen, o	8	pt 9	8 J 52	Taylor Wm, o	7	pt 4
7 J 38	Palmer Francis, jun, f s	8	pt 9	8	53 Taylor John, o	8	pt 5
7 J 39	Palmer James, f s	8	pt 9	8 J 54	Taylor Arch, o	7	pt 4
8 J 186	Phillips Geo, t	7	pt 1	8 J 115	Thompson Hugh, o	7	pt 3
8 J 193	Premo Joseph, t	5	pt 3	9 J 232	Traver Wm, o	4	pt 6
11	255 Pells Geo, t	4	pt 10	9 J 233	Traver Henry, o	4	pt 6
11 J 287	Pugsley Robert, t	4	pt 9				
9 J 228	Pellis William, t	4	pt 5				
				8 J 202	Venning Andrew, o	5	pt 1
7	6 Rose Richard, o	8	pt 12				
7 J 7	Rose R G, o	8	pt 12				
7 J 41	Rome George, f s	8	pt 9				
8	62 Robins Geo, o	7	pt 1	8	70 Watcher Geo, o	7	pt 1
8 J 176	Routledge Andrew, o	5	pt 7	8 J 87	Wagoner Richard, o	7	pt 1
1 J 242	Routledge Geo, o	5	pt 7	8 J 104	Warden James, t	7	pt 2
				8	106 Willsie Thos, o	6	pt 2
				8 J 107	Willsie Geo, o	6	pt 1
				11 J 161	Weatherst'n Wm, o	5	pt 10
				8 J 189	Willsie Merrit, o	6	pt 4
7	42 Smith Peter, o	7	pt 9	8 J 190	Warren James, o	6	pt 3
7 J 43	Smith James, o	7	pt 9	8 J 191	Warren Thomas, f s	6	pt 3
8	72 Sinclair Duncan, o	7	pt 1	8	200 Woodman Henry C, o	6	pt 2
8	78 Strahan Alex, o	7	pt 1	8	204 Wigley Edward, o	5	pt 1
8	83 Spencer Dr, o	7	pt 1	9	226 Willsie Iszac, o	5	pt 5
8 J 168	Sinclair Arch, t	6	pt 9	9 J 227	Willsie Ashley, o	4	pt 5
8 J 192	Smita Joseph, o	5	pt 3	9 J 229	Willsie Levi, o	4	pt 5
8 J 197	Summers Lewis P, f s	6	pt 2	11	284 Willson John, o	4	pt 11
8	198 Summers David, o	6	pt 2	9	316 Waterland Edward, o	4	pt 1
9 J 211	Scott Wm E, o	5	pt 2	9 J 318	Willsie Joseph, o	4	pt 1
9 J 291	Stevenson Wm, t	4	pt 6	12	148 Wall F H, o	4	pt 2
9 J 314	Sanderson Samuel, o	4	pt 1				

FIRST WARD—POLLING DIVISION NO. 1.

PART SECOND.

Persons entitled to vote at Municipal Elections only.

None.

FIRST WARD—POLLING DIVISION NO. 1.

PART THIRD.

Persons entitled to vote at Elections to the Legislative Assembly only.

None.

of Lot
or
rt Lot.
pt 11
pt 11
pt 10
pt 10
pt 8
pt 8
pt 8
pt 7
pt 5
pt 5
pt 3
pt 3
pt 2
pt 2
pt 1
pt 1
pt 1
pt 1
pt 1
pt 9
pt 9
pt 8
pt 8
pt 8
pt 14
pt 10
pt 10
pt 10
pt 11
pt 8
pt 8
pt 8
pt 1
pt 1
pt 1
pt 2
pt 4
pt 4
pt 1
pt 10
pt 12
pt 12
pt 6
pt 6
pt 1

pt 6
pt 11
pt 1
pt 8
pt 11
pt 11
pt 11

pt 1
pt 1
pt 1
pt 1

FIRST WARD.

POLLING DIVISION NO. 2.

Comprising that part of the Township bounded on the East by the Eastern Boundary of the Township, on the North by the River Thames, on the West by the Side Road between Lots 18 and 19 on the Broken Front and the 1st and 2nd Concessions, and on the South by the Concession Line between the 3rd and 4th Concessions.

PART FIRST.

Persons entitled to vote at both Municipal Elections and Elections to the Legislative Assembly.

P.O. Assessm't	No. on Roll.	Name.	Con.	No. of Lot or Part Lot.	P.O. Assessm't	No. on Roll.	Name.	Con.	No. of Lot or Part Lot.
9 J 302	Anderson James, o.....	3	pt 3	9 J 294	Carrothers John, o.....	3	pt 7		
9 J 335	Anderson Wm, o.....	3	pt 3	9 J 295	Carrothers Ninian, o.....	3	pt 7		
9 J 336	Anderson Thos, f s.....	3	pt 3	9 J 296	Carrothers Edward, o.....	3	pt 7		
9 J 337	Anderson Geo, f s.....	3	pt 3	9 J 297	Carrothers Samuel, o.....	3	pt 7		
9 J 338	Anderson John, f s.....	3	pt 3	9 J 298	Carrothers Nathaniel, jr, o	3	pt 6		
9 J 340	Anderson Alex, o.....	3	pt 4	9 J 320	Craig Andrew, t.....	3	pt 1		
1 J 446	Armstrong James, o.....	2	pt 12	9 J 334	Currie John, o.....	2	pt 4		
1 J 447	Agar Wm, o.....	2	pt 13	9 J 349	Carrothers Wm, o.....	3	pt 6		
1 456	Archer Thomas, o.....	2	pt 8	1 551	Copeland James, o.....	1	pt 17		
1 J 457	Archer John, f s.....	2	pt 8	1 J 532	Copeland Alonzo, f s.....	1	pt 15		
10 J 570	Allan David, t.....	b ft	pt 10	1 J 533	Copeland Arthur, t.....	1	pt 15		
				1 J 554	Crouse Isaac, o.....	1	pt 17		
9 J 301	Brownlie John, t.....	3	pt 5						
9 J 302	Brownlie Andrew, o.....	3	pt 2	9 310	Dibb Mitchel, o.....	3	pt 1		
9 J 322	Barton Geo, o.....	3	pt 1	1 J 567	Duff Wm, t.....	1	pt 18		
9 J 328	Boyes Truman, t.....	2	pt 2						
9 327	Byrne John, sr, o.....	3	pt 2						
9 J 330	Byrne John, jr, o.....	3	pt 2						
9 343	Blair James, sr, o.....	3	pt 4	9 J 350	Elliott John, o.....	2	pt 9		
9 J 344	Blair James, jr, f s.....	3	pt 4	11 J 374	Elliott James, o.....	2	pt 16		
9 J 345	Blair Alex, f s.....	3	pt 4	11 J 372	Elliott John, o.....	2	pt 17		
9 J 346	Blair John, f s.....	3	pt 5	11 429	Elliott John, o.....	1	pt 17		
9 351	Bratt Enoch, o.....	3	pt 6	11 J 430	Elliott Wm, f s.....	2	pt 17		
11 362	Beattie James, o.....	3	pt 9	11 J 431	Elliott Francis, o.....	2	pt 16		
11 J 363	Beattie Wm, f s.....	3	pt 9	10 J 462	Eldridge Rufus, o.....	2	pt 6		
11 J 364	Beattie Robert, f s.....	3	pt 9	10 504	Edwards Thos, o.....	b ft	pt 1		
11 J 365	Beattie Elliott, f s.....	3	pt 9	10 533	Edwards Henry, o.....	1	pt 10		
11 J 366	Beattie Andrew, f s.....	3	pt 9						
11 J 367	Beattie James, o.....	2	pt 14						
11 417	Baty Robert, o.....	2	pt 18						
11 J 418	Baty Adam, f s.....	2	pt 18	11 J 378	Fleming R E, o.....	3	pt 12		
11 J 419	Baty Arthur, f s.....	2	pt 18	11 379	Fleming Thos, o.....	3	pt 12		
11 J 420	Baty Thos, f s.....	2	pt 18	11 423	Fleming Robert, o.....	1	pt 18		
11 427	Barclay Wm, o.....	1	pt 17	10 J 492	Fuelling Wilson, o.....	1	pt 1		
11 J 433	Beattie Wm J, o.....	2	pt 16	1 J 543	Fanner Geo, t.....	b ft	pt 16		
11 436	Beattie Andrew, o.....	2	pt 15	1 J 636	Frank G B R.....	3	pt 16		
11 J 437	Beattie Angus, f s.....	2	pt 15						
11 J 438	Beattie Wm, f s.....	2	pt 15	9 J 347	Gaetley Geo, sr, o.....	2	pt 8		
1 J 440	Beattie Wm R, o.....	2	pt 14	9 J 348	Gaetley Geo, jr, f s.....	2	pt 8		
10 464	Bartley Geo, o.....	2	pt 4	11 354	Grieve Thos, sr, o.....	2	pt 12		
10 J 465	Barnard Albert, o.....	2	pt 4	11 J 355	Grieve Richard, f s.....	2	pt 12		
10 J 479	Barrows Alonzo, o.....	1	pt 2	11 J 356	Grieve James, jr, f s.....	2	pt 13		
10 J 491	Barrows Francis, o.....	1	pt 1	11 J 357	Grieve James, f s.....	2	pt 10		
10 J 490	Barrows Chancey, o.....	1	pt 1	11 J 359	Griffith Jeremiah, o.....	2	pt 11		
10 502	Burdick Albert, o.....	b ft	pt 1	11 J 360	Griffith Eli, f s.....	2	pt 11		
10 508	Byers Wm, o.....	b ft	pt 1	11 J 361	Griffin Wm, o.....	3	pt 8		
10 J 509	Byers Geo, o.....	b ft	pt 1	11 426	Gilmour James, o.....	1	pt 17 & 18		
10 J 529	Bickley John, o.....	1 & b ft	pt 7						
1 J 541	Bell Wm, o.....	1 & b ft	pt 14, 15						

No. on P.O. Assesmt's Roll.	Name.	Con.	No. of Lot or Tart Lot.	No. on P.O. Assesmt's Roll.	Name.	Con.	No. of Lot or Part Lot.
10 J 534	Garnet Geo, t	1	pt 10	11 J 373	Murray James, f s	3	pt 12
1	547 Gurney Wm, o	b ft	pt 16	11 J 374	Murray George, o	3	pt 12
				1 J 449	McDougal Joseph, o	2	pt 10
				1 J 461	McDougal Thomas, o	2	pt 7
				10 J 467	McClary Charles, o	1	pt 4
				10 J 476	McClary Wm, o	1	pt 2
11 J 288	Hanson Laurence, t	3	pt 10	10 477	McClary Peter, o	2	pt 2
11 J 352	Harding Robert, o	2	pt 11	10 J 482	McDermott Michael, f s	1	pt 2
11 J 353	Harding John, f s	3	pt 7	10 J 484	McNeil Malcolm, oc	2	pt 1
11 421	Hamilton John, o	1	pt 18	10 J 486	Moorwood John, o	2	pt 1
1 J 495	Hutchinson John, o	2	pt 8	10 J 505	McCarty Geo, o	b ft	pt 1
1 J 460	Hutchinson John K, f s	2	pt 7	10 J 511	McClary John, o	1	pt 2
10 463	Hart John, sr, o	2	pt 4	1 535	McKerlie Wm, o	1	pt 12
10 J 269	Hart John, jr, f s	2	pt 4	1 J 536	McKerlie John, f s	1	pt 12
10 J 470	Hart Wm, f s	2	pt 5	1 J 537	McKerlie Wm, sr, oc	1	pt 14
10 J 498	Holt Orin, o	b ft	pt 1	1 J 555	McIntyre Daniel, o	b ft	pt 17
10 J 512	Hanna Robert, o	1	pt 4	1 J 556	McIntyre Angus, oc	b ft	pt 17
10 J 527	Hanson James, t	1	pt 5	1 560	McEvoy Martin, o	b ft	pt 18
1 J 540	Hoyt Miles E, o	1	pt 14 & 15				
				11 J 289	Nichel Francis, sr, o	3	pt 9
				11 J 290	Nichel Francis, jr, f s	3	pt 8
1 J 538	Irwin Wm, o	1 & b ft	pt 13	1 J 441	Nichel Robert, o	1	pt 13
				1 J 442	Nichel Andrew, o	1	pt 13
				10 J 528	Norton F D, o	1	pt 8
				1 J 558	Nicholson, Henry, oc	b ft	pt 18
				11 J 370	Odell Melville, oc	3	pt 11
				11 J 376	Odell Edward, t	3	pt 12
				10 472	O'Brien James, sr, o	2	pt 3
				10 J 473	O'Brien James, jr, f s	2	pt 3
				10 J 503	Odell Fred A, o	b ft	pt 1
				9 J 325	Patterson John, t	3	pt 1
				9 339	Pickle Levi, o	2	pt 5
				10 J 466	Purdham Hector, t	1	pt 4
				10 480	Palmsby Thomas, o	1	pt 1
				10 483	Passmore Philip, o	2	pt 1
				10 J 495	Pearson Wm, o	1	pt 1
				10 J 496	Pearson Stephen, t	1	pt 1
				10 J 514	Pearson Edward, t	b ft	pt 3, 4
				10 J 515	Pearson James, t	b ft	pt 3, 4
				10 J 516	Pearson Wm, t	b ft	pt 3, 4
				10 J 532	Peck Wm, t	b ft	pt 8, 9
				1 J 539	Parry David H, o	1	pt 14
				1 J 571	Philips Daniel, t	1	pt 13, 14
				10 J 474	Padgster Thomas, t	1	pt 3
				11 J 375	Ritelie John, o	3	pt 11
				1 J 448	Rae Wm, o	1	pt 11
				10 493	Richmond Richard, o s Sage st	b ft	pt 1, 2, 3
				10 J 506	Reynolds Henry, o	b ft	pt 1
				10 J 507	Reynolds Edward, f s	b ft	pt 1
				1 J 559	Ross A M, o	b ft	pt 18
				1 J 564	Richards Wm, o	1	pt 18
				1 J 568	Rogers Henry, t	1	pt 18
9 J 292	Munro Neal, o	3	pt 7				
9 J 293	Munro Arch, o	3	pt 8				
9 J 300	Muir Archibald, o	3	pt 5				
9 J 325	Manning Chas, o	2	pt 2				
9 J 326	Manning Jacob, f s	2	pt 2				

FIRST WARD—DIVISION NO. 2.

P.O. Assessm't	No. on Roll.	Name.	Con.	No. of Lot or Part Lot.	P.O. Assessm't	No. on Roll.	Name.	Con.	No. of Lot or Part Lot.
9 J	291	Stevenson Wm, t.....	3	pt 7	1 J	550	Sumner Thomas, o.....	b ft	pt 16
9 J	331	Shaver John N, oc.....	2	pt 5	1	557	Stokoe Barth, o.....	b ft	pt 17 & 18
9	332	Shaver John, o.....	2	pt 5	10 J	469	Sumner Wallace, t.....	2	pt 4
9 J	332	Shaver Horace P, oc.....	2	pt 5					
1	358	Scott Charles, f s.....	1	pt 17					
1 J	439	Sumner Wm C, o.....	1	pt 14					
1 J	443	Shannon Wm, o.....	2	pt 13	9 J	324	Tibbets Elkanan, o.....	3	pt 1
1 J	450	Scott David, o.....	2	pt 10	11	424	Thompson James, o.....	1	pt 18
1	451	Scott John, o.....	2	pt 9	11 J	425	Thompson Wm, f s.....	1	pt 18
1 J	452	Scott John E, f s.....	2	pt 9					
1 J	453	Scott Walter, f s.....	2	pt 9					
1 J	455	Scott James, f s.....	2	pt 9					
1 J	454	Scott Robert, f s.....	2	pt 9					
10 J	463	Stephens Lorenzo, o.....	2	pt 5	9 J	303	Weldon Joseph, o.....	3	pt 1
10	485	Simpson Ralph, o.....	2	pt 1	10 J	476	Westerfield James, t.....	1	pt 2
10 J	497	Smith Thomas, o.....	1	pt 1	10 J	494	Wilson Joseph, o.....	s Sage st	pt 1
10	500	Stronghill Thos, o.....	b ft	pt 1	10 J	530	Williams C. N., oc.....	1	pt 8 & 9
10 J	513	Sage Nelson, o.....	b ft	pt 4	10 J	531	Williams James, o.....	1	pt 8 & 9
10	525	Smith Thos, o.....	1	pt 7					
10 J	556	Smith Albert, f s.....	1	pt 7					
1 J	542	Soules Riley, o.....	b ft	pt 15					
1 J	544	Sumner Geo, o.....	b ft	pt 16					
1 J	545	Sumner James.....	b ft	pt 16	10	524	Young Charles, o.....	1	pt 7
1	546	Sumner Leonard, t.....	b ft	pt 16	1 J	562	Young James, o.....	1 & b ft	pt 13
1	548	Sumner Cyprus, o.....	b ft	pt 16	1	563	Yeo Benjamin, o.....	"	pt 18
1 J	549	Sumner Richard, o.....	b ft	pt 16					

FIRST WARD—POLLING DIVISION NO. 2.

PART SECOND.

Persons entitled to vote at Municipal Elections only.

None.

FIRST WARD—POLLING DIVISION NO. 2.

PART THIRD

Persons entitled to vote at Elections to the Legislative Assembly only.

None.

No. of Lot
or
Part Lot.
pt 16
pt 17 & 18
pt 4

SECOND WARD.

(COMPOSED OF POLLING DIVISIONS NOS. 3 AND 4.)

POLLING DIVISION NO. 3.

Comprising that part of the Township bounded on the East by the Side Road between Lots 18 and 19, on the Broken Front and the 1st Concession, on the North by the River Thames, on the West by the Wortley Road and the Side Line between Lots 27 and 23, and on the South by the Commissioners' Road.

pt 1
pt 18
pt 18

PART FIRST.

Containing the names of persons entitled to vote at both Municipal Elections and Elections to the Legislative Assembly.

P.O.	No. on Assessm't Roll.	Name.	Con.	No. of Lot - or Part Lot.
1 J	657	Applegate Wm, o.....	Clark st	22, 23
1 J	702	Ashton Fred, o.....	E W B R	10, 11, 12
1 J	727	Aiken Peter, t.....	e Wortley	pt 5
1 J	801	Argyle Edward, o.....	e Wortley	pt 1
2 J	806	Arbuckle Wm, o.....	Ham Svy	pt 1, 2
2 J	813	Able Geo, o.....	Ham Svy	pt 2
1 J	641	Bartlett Leonard, o.....	b ft	pt 25
1	643	Broomfield John, o.....	b ft	pt 25
1	670	Burt Samuel, t.....	n Bridge st	16
1	677	Brazil Patrick, o.....	"	8
1	688	Blow Wm, o.....	"	2
1 J	694	Brimsmead Henry, o.....	n Madison st	7, 8, 9
1	699	Barley H, t.....	W W B R	1
1	706	Berry Richard, o.....	W W B R	3, 4, 5
1	709	Berry Wm, o.....	s Clark st	18, 20
1 J	710	Beasley Ira, o.....	b ft	pt 25
1 J	731	Beares Wm, o.....	e Wortley	pt 5
1 J	732	Buckingham James, o.....	e Wortley	pt 5
1 J	787	Brady Robert, t.....	Ham Svy	6
1 J	788	Biggs James, o.....	Ham Svy	6
1 J	797	Brooks Thomas, t.....	e Wortley	2
2 J	821	Brunton Thomas, o.....	Craig Svy	7
2 J	831	Birrell Geo S, o.....	Craig st	1, 32
2 J	832	Birrell Wm H, o.....	"	4, 5, 6
2	851	Bonser Wm, t.....	"	pt 21
2 J	854	Brenner A, o.....	Craig st	pt 24
2 J	855	Brenner R, o.....	Craig st	pt 24
2 J	863	Baulday David, t.....	Craig st	pt 29
2 J	867	Burns James, o.....	Craig st	pt 36
2 J	888	Brown Dr, o.....	Craig st	pt 12, 13, &c

P.O.	No. on Assessm't Roll.	Name.	Con.	No. of Lot - or Part Lot.
2 J	811	Childs Geo, t.....	Ham Svy	pt 2
2 J	815	Cutler Geo, o.....	"	4
2	816	Cannon John, o.....	"	4
2 J	818	Cave Alfred, o.....	e Henry st	3
2	850	Cambridge John, t.....	Craig st	22
1	613	Durand Donald, o.....	b ft	pt 25
1	619	Duguid Alex, sr, o.....	b ft	pt 24
1 J	621	Duguid Alex, Jr, t.....	1	pt 24
1 J	622	Duguid Peter, t.....	1	pt 24
1 J	634	Dawson R J C, o.....	e ft	pt 22
1 J	646	Dunean Geo, o.....	s Clark st	22, 23
1	682	Delaney John, o.....	n Bridge st	6
1	685	Dodds John C, o.....	n Clark st	14
1 J	686	Dodds Geo T, oc.....	"	14
1 J	700	Diprese H, o.....	W W B R	pt 1
1 J	758	Dennis Roland, o.....	n Ham Row	pt 8
1 J	767	Dunn Henry, o.....	w Queen st	7, 8, 9, 10
2 J	800	Drake B, o.....	Craig st	28
2 J	865	Davy Thomas, o.....	"	30
1 J	866	Davy George.....	"	31
1 J	601	Emery A S, o.....	1	pt 26
1 J	640	Eggett John, t.....	b ft	pt 25
1 J	647	Eggett Christopher, t.....	s Clark st	22, 63
1	664	Evans R J, t.....	s Bridge st	10, 12
2 J	868	Elliott Charles H, o.....	Craig st	36
2 J	885	Eddy W, t.....	e Wortley	5

1 J	569	Curtis Henry C, o.....	1	pt 19
1	616	Crosby Wm, o.....	1	pt 25
1 J	637	Colgrove R D, o.....	b ft	pt 25
1 J	651	Campbell James, o.....	b ft	pt 25
1 J	654	Chute J M, t.....	n Mill st	pt 1, 2, 3, 9, 10
1 J	658	Cake Elias, t.....	s Bridge st	pt 2, 3, 4
1	668	Cole Charles, o.....	n Bridge st	pt 18
1	672	Court Robert, o.....	n Bridge st	pt 14
1	681	Cheeseman Arthur, t.....	n Bridge st	pt 7
1	737	Conway Thomas, o.....	s Ham Row	pt 8
1 J	735	Ching Wm, o.....	s Ham Row	pt 8
1	772	Churcher Thomas, o.....	e Wortley	pt 5
1	774	Carfrae Robert, o.....	"	pt 8
1	796	Cowan Robert, o.....	"	pt 2

2 J	838	Friend Wm, o.....	Craig st	26
2	838	Ferguson James, o.....	s Ham Row	1, 2
1 J	606	Ford Wm, o.....	1	pt 26
1 J	630	Frank R S, o.....	b ft	pt 21, 22
1 J	636	Frank G B R, o.....	b ft	pt 24
1 J	644	Finn Wm, o.....	b ft	pt 25
1 J	660	Flitten Mr, t.....	s Bridge st	2, 3, 4
1	692	Flinten Wm, t.....	n Bridge st	1
1 J	723	Finnmore Alfred, o.....	e Wortley	2, 3, 4
1	736	Feen John, o.....	s Ham Row	8
1	749	Flack Wm, t.....	s Madiver st	1
1	751	Foster Robert, o.....	"	5
1 J	760	Ferguson John, o.....	s Ham Row	pt 8
1 J	799	Foster Chas, t.....	e Wortley	pt 1

pt 1
pt 2
pt 1
pt 8 & 9
pt 8 & 9

pt 7
pt 13
pt 18

P.O. Assessm't	No. on Roll	Name.	Con.	No. of Lot or Part Lot.
1 J 583		Griffith John H, o.....	1	pt 23
1 J 612		Geary Thomas, o.....	b ft	pt 25
1 J 623		Gunn John C, o.....	b ft	pt 23
1 J 653		Griffin James, o.....	n Mill st	1, 2, 3
1	680	Gardener Henry, o.....	n Bridge st	7
1	683	Gowers James, o.....	"	5
1 J 693		Grant James, t.....	"	1
1 J 738		Gartshore Wm, t.....	Wortley	5
1 J 768		Goodhue Charles, o.....	e Wortley	6, 7
1 J 776		Gunn G M, o.....	Craig Svy	2
2 J 858		Gerry Wm, o.....	e Wortley	pt 8
2 J 859		Gerry John, o.....	"	pt 8
2 J 880		Gilbert Wm, t.....	1	pt 15, 16
1	892	Hope Charles, o.....	w Queen st	pt 2
1	893	Hope Charles J, o.....	e Queen st	pt 3
1	894	Hope Adam, o.....	"	"
2	891	Haskett John, o.....	b ft	pt 25
1	561	Holden John, o.....	b ft	pt 20
1 J 581		Hyndman Donald, o.....	1	pt 23
1 J 582		Hyndman Alex, o.....	1	pt 23
1 J 591		Hall Thomas, o.....	1	pt 25
1 J 619		Hammet Wm, t.....	1	pt 26
1 J 615		Hiseox Thomas, o.....	1	pt 25
1 J 626		Harris Geo B, o.....	b ft	pt 23
1	666	Holms Geo, o.....	n Bridge st	19
1	667	Hackett John, o.....	n Bridge st	17
1	674	Hughs Wm, o.....	n Bridge st	19
1	707	Holland J, t.....	s Clark st	18, 20
1	718	Horton Wm, o.....	b ft	pt 25
1 J 722		Hartley John, t.....	e Wortley	pt 4
1	733	Hughs David, o.....	e Wortley	pt 5
1	759	Hitchen Joseph, o.....	s Madiver st	2, 3
1 J 764		Hymn Charles, t.....	e Wortley	6, 7
1	770	Hodgets Thomas, t.....	Craig Svy	3
2 J 819		Halle Wallace, o.....	e Henry st	4
2 J 827		Howe Fred, t.....	e Craig Svy	11
2 J 840		Heard John, o.....	e Wortley	8
2 J 842		Haggart A, o.....	e Wortley	8
2	849	Hall Wm, o.....	Craig st	21
2	853	Hall Richard, o.....	Craig st	21
2 J 882		Hunt Chas B, o.....	e Wortley	pt 8
2 J 883		Hunt John J A, o.....	e Wortley	pt 8
1 J 614		Irwin John, o.....	b ft	pt 24
1 J 575		Jamieson, Wm, o.....	1 & b ft	pt 20
2 J 808		Jarvis Wm, o.....	Ham Svy	1, 2
1 J 642		Knowls Thomas, o.....	b ft	pt 25
1	755	Kisby Levy, o.....	n Ham Row	8
1	793	Koyle E L, t.....	e Wortley	4
2 J 822		Killeen John, o.....	Craig Svy	8

P.O. Assessm't	No. on Roll	Name.	Con.	No. of Lot or Part Lot.
1 J 676		Lowe Francis, o.....	n Bridge st	n pt 9
1 J 705		Lasward Lawrence, t....	w w b r	3, 4, 5
1	719	Lepper Andrew, sr, o.....	b ft	pt 25
1	720	Lepper Andrew, jr, o.....	b ft	pt 25
1	748	Lewis W, o.....	s Madiver st	1
1	752	Leathorn R, o.....	s Madiver st	4, 6
1 J 763		Luney James, o.....	s Ham R	pt 7
1 J 803		Love Francis, o.....	e Wortley	pt 1
2 J 847		Logan David, t.....	Craig st	21
1 J 590		Mathieson Angus, o....	1	pt 25
1 J 593		Main C W, o.....	s Main st	5
1 J 595		Main Henry, o.....	e Wortley	pt 1
1 J 597		McFalls Robert, o....	"	pt 1
1	611	McIntosh J, o.....	b ft	pt 25
1	639	McIntosh John, o.....	b ft	pt 25
1	643	McIntosh Geo, o.....	b ft	pt 25
1	665	Merret Stephen, o.....	n Bridge st	20
1 J 690		McDonald James, t....	"	1
1 J 713		McIntosh Peter, t....	W W B R	9, 11
1	716	McIntosh David, t....	b ft	pt 25
1 J 724		McPhail Arch, o.....	e Wortley	pt 5
1 J 730		McClary John, o.....	"	pt 5
1 J 744		McPherson Daniel, o....	b ft	pt 25
1 J 754		Minhinnick W H, o..e	e Wortley	pt 8
1 J 757		Morris E, o.....	"	pt 6, 7
1 J 765		Marshall John, o.....	"	pt 6, 7
1	782	Monaghan Geo, o.....	Hata Svy	4, 5, 6
1 J 783		McLuchlan Mr, t.....	e Henry st	4
1 J 770		McClure James, t.....	e Wortley	pt 8
1 J 771		McFie Daniel, o.....	"	pt 8
1	800	Matthison Donald, o....	"	pt 1
2 J 804		Maybank John, t.....	Ham Svy	1, 2
2 J 812		McPherson John, o.....	McFie Svy, blk y	19
2 J 814		Madden John, o.....	Ham Svy blk y	3
2 J 817		McDonald Alex, o.....	Ham Svy blk y	5
2 J 825		Maddiford Wm, o.....	Craig st	9, 10
2 J 833		May Isaac, t.....	"	4, 5, 6
2 J 844		Morton Charles, o....	e Wortley	pt 8
2 J 837		McCornick T, o.....	s Ham Row	7
2 J 875		Mustill John, o.....	Craig st	41
2 J 884		McKenzie Philip, o..e	e Henry st	7, 8 & e
2 J 887		Massingbud Mr, o....	raig Svy	12, 13, 17
1 J 592		Northcott Aaron, t....	1	pt 26
1 J 703		Neeve C G, t....	E W B R	10, 11, 12
1 J 778		Nelles Dr, o.....	Craig Svy	3
1 J 780		Nelles H H, o.....	s Bruce st	1
1	861	Nugent Thos, t.....	Craig st	28
1 J 587		Odell W L, o.....	1	pt 25
1	588	Odell Wm, o.....	1	pt 25
1	589	Odell Melvin, o.....	1	pt 25
1 J 617		Odell John, o.....	1	pt 25
1 J 678		O'Mara Mr, o.....	s Bridge st	1
1 J 596		Odell Lyman, t.....	e Wortley	1

P.O. Assessm't	No. on Roll	Name.	Con.	No. of Lot or Part Lot.
2 J 988				
1	571			
1 J 572				
1 J 606				
1 J 614				
1	711			
1	717			
1 J 777				
1 J 778				
1 J 779				
2 J 879				
2 J 881				
2 J 882				
2 J 883				
2 J 884				
2 J 885				
2 J 886				
2 J 887				
2 J 888				
2 J 889				
2 J 890				
2 J 891				
2 J 892				
2 J 893				
2 J 894				
2 J 895				
2 J 896				
2 J 897				
2 J 898				
2 J 899				
2 J 900				
2 J 901				
2 J 902				
2 J 903				
2 J 904				
2 J 905				
2 J 906				
2 J 907				
2 J 908				
2 J 909				
2 J 910				
2 J 911				
2 J 912				
2 J 913				
2 J 914				
2 J 915				
2 J 916				
2 J 917				
2 J 918				
2 J 919				
2 J 920				
2 J 921				
2 J 922				
2 J 923				
2 J 924				
2 J 925				
2 J 926				
2 J 927				
2 J 928				
2 J 929				
2 J 930				
2 J 931				
2 J 932				
2 J 933				
2 J 934				
2 J 935				
2 J 936				
2 J 937				
2 J 938				
2 J 939				
2 J 940				
2 J 941				
2 J 942				
2 J 943				
2 J 944				
2 J 945				
2 J 946				
2 J 947				
2 J 948				
2 J 949				
2 J 950				
2 J 951				
2 J 952				
2 J 953				
2 J 954				
2 J 955				
2 J 956				
2 J 957				
2 J 958				
2 J 959				
2 J 960				
2 J 961				
2 J 962				
2 J 963				
2 J 964				
2 J 965				
2 J 966				
2 J 967				
2 J 968				
2 J 969				
2 J 970				
2 J 971				
2 J 972				
2 J 973				
2 J 974				
2 J 975				
2 J 976				
2 J 977				
2 J 978				
2 J 979				
2 J 980				
2 J 981				
2 J 982				
2 J 983				
2 J 984				
2 J 985				
2 J 986				
2 J 987				
2 J 988				
2 J 989				
2 J 990				
2 J 991				
2 J 992				
2 J 993				
2 J 994				
2 J 995				
2 J 996				
2 J 997				
2 J 998				
2 J 999				
2 J 1000				

SECOND WARD—DIVISION NO. 3.

No. of Lot or Part Lot.	No. on P.O. Assessm't Roll.	Name.	Con.	No. of Lot or Part Lot.	No. on P.O. Assessm't Roll.	Name.	Con.	No. of Lot or Part Lot.
	2 J 980	Pannell-John, o.....	Craig Svy	15	2 J 864	Seccombe R, o.....	Craig Svy	29
	1	576 Park John W, o.....	1	pt 20 & 21	2 J 874	Stanton Albert, o.....	Craig Svy	40
	1 J 577	Park John, o.....	1	pt 20	2 J 878	Shaw Geo, o.....	Craig st	19, 20
	1 J 602	Pratt Chas, o.....	1	pt 26	2 J 879	Shaw J M, o.....	Craig st	19, 20
	1 J 645	Porter Fred W, t.....	b ft	pt 25				
	1	717 Prior John, o.....	W W B R	12				
	1	761 Parsons Elmathan, sr, o.s	Ham Row	7				
	1 J 762	Parsons Elmathan, jr, o.....	"	7				
	1 J 777	Plimpron Francis, t.....	Craig Svy	2	1 J 601	Timbril Thomas, t.....	1	pt 26
	1 J 784	Pope James, o.....	e Henry st	4	1 J 591	Tamlin Thomas, o.....	1	pt 26
	1 J 786	Pope John, o.....	Ham Svy	6	1 J 656	Tibb John, o.....	n Clark st	13
	1 J 789	Peto Henry, o.....	c Bruce st	7	1 J 691	Taylor Thomas, t.....	n Bridge st	1
	2 J 820	Parish Geo, o.....	c Henry st	6	1 J 704	Thompson Henry, t.....	W WBR	3, 4, 5
	2 J 829	Parke E J, o.....	e Wortley	8	1 J 721	Taylor Col, o.....	b ft	25
	2 J 843	Phillips John, t.....	"	8	1	725 Taylor John, sr, o.....	e Wortley	pt 5
					1 J 726	Taylor John, jr, o.....	e Wortley	pt 5
					1 J 729	Tryant A, t.....	e Wortley	pt 5
					1 J 840	Tracy Thomas W, o.....	W WBR	10, 13
					1 J 741	Tracy John, o.....	W WBR	10, 13
					1 J 747	Tallferro John, t.....	W WBR	e pt 5
	2 J 857	Rieh Robert, t.....	Craig st	26	1 J 781	Taylor John, o.....	Ham Svy, w Queen st	3
	2 J 839	Robinson W J, t.....	e Wortley	pt 8	1 J 802	Todd Wm E, t.....	e Wortley	pt 1
	2 J 809	Roe Chas, t.....	Ham Svy	1, 2	1 J 830	Taylor Henry, o.....	e Wortley	pt 3, 4
	1 J 559	Ross A M, o.....	b ft	pt 18, 19	2 J 834	Thompson Thomas, o.....	s Ham Row	5, 6
	1 J 570	Roek Warren, o.....	b ft	pt 19	2	835 Thompson Wm H, o.....	n Ham Row	7
	1	598 Raisin Simon, o.....	e Wortley	pt 1				
	1	299 Raisin Henry, o.....	"	1				
	1 J 603	Reid Robt, o.....	"	1	2 J 876	Westman Alfred, o.....	Craig st	43
	1 J 604	Reid Geo, o.....	"	1	2 J 873	Wright Edward, o.....	Craig st	39
	1 J 687	Reid Alex, o.....	n Bridge st	3, 4	2 J 872	Westland James T, oe.....	Craig st	38, 37
	1	708 Respin Rich, t.....	s Clark st	18, 20	1 J 565	Weymouth Samuel, o.....	1	pt 19
	1 J 714	Rice Wm, t.....	W W B R	9, 11	1 J 578	Wiglesworth Wm, o.....	1	pt 22
	1 J 715	Rolson James.....	"	9, 11	1 J 600	Wilson Lawrence, o.....	E Wortley	pt 1
	1	743 Robinson Thomas.....	b ft	25	1 J 623	West Edward, o.....	b ft	pt 24
	1 J 766	Richardson Charles, o.e	Wortley	6, 7	1 J 624	Whetter Richard, o.....	b ft	pt 23
	1 J 775	Russel Geo, o.....	"	pt 8	1 J 625	Whetter H F, f s.....	b ft	pt 24
	1 J 783	Robinson E W, o.....	e Henry st	pt 6	1 J 633	Woodward H, t.....	b ft	pt 23
	1 J 790	Robinson W H, o.....	Ham Svy	pt 5	1 J 638	Weston Geo, o.....	b ft	pt 25
	1 J 792	Reynolds Richard, o.....	e Wortley	pt 5	1	649 Watson, Geo, o.....	Mill st	4, 5, 6 & 7
					1	650 Watson John, t.....	Mill st	7 & 8
	1 J 572	Sumner Rolph B, o.....	1	pt 19	1 J 659	Whitehouse Ed, t., St Bridge st.	.2, 3, 4 & 5	
	1	73 Sumner C W, o.....	1	pt 19	1 J 661	Winnett Chas, t., St Bridge st.	.2, 3, 4, & 5	
	1	605 Scott Wm, o.....	1	pt 26	1 J 662	Winnett Henry, o.....	St Bridge st., 2, 3 & 4	
	1 J 607	Sampson Samuel.....	1	pt 25	1 J 711	Wentworth, Ed, t.....	W W B R	7 & 8
	1 J 608	Sampson Wm, o.....	e Wortley	pt 1	1 J 712	Weatherhead Wm, o.....	W W B R	9 & 11
	1 J 618	Skelton Levi, t.....	1	pt 25	2	794 Wakeling Wm, o.....	E Wortley	4
	1 J 653	Smith Alex, o.....	n Mill st	12, 13, 14	2 J 826	West Wm, t.....	Craig st	11
	1 J 679	Swartz Thomas, t.....	s Bridge st	1	1 J 846	Walker Robert B, t.....	Craig st	22
	1	684 Symonds Wm, t.....	n Bridge st	5	2	853 Whitehead Wm H, o.....	Craig st	23
	1 J 739	Sharkey Hugh, o.....	W WBR	pt 25	2 J 870	Ward John, t.....	Craig st	37
	1 J 745	Slater Wm, t.....	b ft	pt 25				
	1	753 Sanson Geo, t.....	s Madiver st	4, 6				
	1 J 758	Sutton Samuel, t.....	e Wortley	6, 7	1 J 627	Yates Henry, t.....	b ft	pt 23
	5 J 773	Sutherland G D, o.....	e Queen st	1, 2	2 J 841	Yeo Nicholas F, o.....	E Wort	pt 8
	1 J 791	Scott Robert, t.....	e Wortley	5				
	2 J 807	Sage Jesse, t.....	Ham Svy	1, 2				
	2 J 810	Seccombe R, o.....	Ham Svy	1, 2				
	2 J 828	Scott Robert, o.....	Craig Svy	11				
	2 J 848	Slaught A, t.....	Craig Svy	42				

SECOND WARD—POLLING DIVISION NO. 3.

PART SECOND.

Persons entitled to vote at Municipal Elections only.

1	673 O'Lachan Michael, o...	Bridge st	15		1	696 Walse J, t.....	W W B R	1
1	697 Snake John, t.....	W W B R	1					

SECOND WARD—POLLING DIVISION NO. 3.

PART THIRD.

Persons entitled to vote at Elections to the Legislative Assembly only.

None.

SECOND WARD.

POLLING DIVISION NO. 4.

Comprising that part of the Township bounded on the East by the Wortley Road and the Side Line between Lots 27 and 28, on the North by the River Thames, on the West by the Side Road between Lots 36 and 37, and on the South by the Commissioners' Road.

PART FIRST.

Persons entitled to vote at both Municipal Elections and Elections to the Legislative Assembly.

P.O. Asses'm't	No. on Roll.	Name.	Con.	No. of Lot or Part Lot.	P.O. Asses'm't	No. on Roll.	Name.	Con.	No. of Lot or Part Lot.	
3	743	Askey Amos, o.....	w	Whnff	8	3	J 1010	Brown Henry, o.....	s Alma st	120
3	J 859	Armitage S S, t.....	n	Stanley st	17	3	J 1029	Bartlett Wm, t.....	n Askin st	115
3	J 1021	Abram Wm, o.....	n	Askin st	107	3	J 1035	Beattie Thos, o.....	w Wortley	126
						2	J 1062	Blackwell Robert, o.....	s Askin st	60
1	J 691	Balk Fred, o.....	b	ft	36	2	J 1103	Burtwhistle P, o.....	Macfie's svy	J 12
1	J 697	Blinn Robert, o.....		1	35	2	J 1085	Cooper W D, o.....	Macfie's svy	B 9,10
1	J 698	Blinn Wm, o.....		1	36	2	J 1086	Cooper E J, o.....	Macfie's svy	K 30
1	J 716	Bullen John, t.....		1	32	2	J 1087	Curry R N, o.....	Macfie's svy	B 11
1	J 718	Bogue Allan, o.....	b	ft	33	2	J 1099	Clements Wm P, o.....	Macfie's svy	B 11
1	J 719	Bogue John, sr, o.....	b	ft	33	3	J 729	Campbell Wm, o.....	w Whnff	sub 1
1	J 722	Broad James, o.....	b	ft	32	3	J 744	Curtis John, o.....	w Whnff	sub 4
1	J 741	Bishop John, o.....	w	Whnff	8	3	J 758	Carr John, o.....		1
1	J 742	Bows John, o.....		"	8	3	J 805	Curtin Thomas, o.....	Askin svy	66
1	J 785	Brown Johnston, o.....	w	Wortley	pt 1	3	J 813	Connors John, o.....	w Whnff	4
1	J 806	Bruce Wm, o.....	n	Askin Svy	67	3	J 814	Connors James, o.....	w Whnff	4
3	J 810	Baldie John, o.....	w	Whnff	4	3	J 831	Conner John, o.....	n Kent st	1
3	J 824	Burk John, o.....	"	"	2	3	J 834	Cox Moses, o.....	s Kent st	2
3	J 830	Blackwell Wm, t.....		sub. 1, 2	2	3	J 838	Campbell Daniel, o.....	s Kent st	6
3	J 852	Baldwin H P, o.....	"	sub. 4	4	3	J 846	Collins Jeremiah, o.....	w Whnff	6,7
3	J 857	Bowen Henry, o.....	Gordon's	Svy	6	3	J 847	Curtin John, t.....	w Whnff	6,7
3	J 865	Bates Thomas, t.....	Askin	st	79	3	J 853	Carling Isaac, o.....	w Whnff	4
3	J 887	Bauldneyn David, o.....	s	Stanley st	6	3	J 871	Coyne Wm P, o.....	n Stanley st	6,7
3	J 909	Brunigan James, o.....	n	McBeth st	57	3	J 878	Coleman John, o.....	e Whnff	6
3	J 910	Burridge John, o.....	"	"	57	3	J 879	Coleman Richard, o.....	s Stanley st	14
3	J 914	Burridge Thomas, t.....	n	Beecher st	63	3	J 902	Coveney Michael, o.....	s Centre st	17
3	J 914	Bartlett Walter A, t.....	"	"	67	3	J 912	Colquhonne Nelson, t.....	n McBeth st	57, 58
3	J 938	Beaton H, o.....	McMillan	svy	9, 10	3	J 911	Concely Robert, t.....	n McBeth st	57
3	J 942	Beecher H C R, o.....	n	Beecher svy	53, 54	3	J 933	Churcher Thomas, o.....	R A	19, 20
3	J 977	Balkwell Isaac, o.....	n	Maple st	10	3	J 937	Chalmer Geo, o.....	R A	25
3	J 994	Betts Henry, o.....	s	Maple st	32					
3	J 995	Betts Geo, t.....	s	Maple st	32					

No. J 6
P.O. Asses'm't J 6
Roll B J 7
3 J 8
3 J 8
3 J 8
3 J 8
3 J 8
3 J 8
3 J 9
3 J 9
3 J 9
3 J 9
3 J 10
3 J 10
2 J 10
2 J 10
2 J 10
3 J 10
3 J 10
3 J 10
3 J 10
3 J 10

SECOND WARD—DIVISION NO. 4.

W B R 1

the Side Line
between Lots 36

assembly.

on. No. of Lot
Part Lot.

Alma st 120
Askin st 115
Wortley 126
Wortley 31,32
Askin st 60
ie's svy J 12
ie's svy B 9,10
ie's svy K 30
ie's svy B 11
ie's svy B 11
Whnff sub 1
Whnff sub 4
l 30
kin svy 66
Whnff 4
Whnff 4
Kent st 1
Kent st 2
Kent st 6
Whnff 6,7
Whnff 6,7
Whnff 4
anley st 6,7
Whnff 6
anley st 14
entre st 17
leBeth st 57,58
eBeth st 57
... R A 19,20
... R A 25

No. on P.O. Assesmt't Roll.	Name.	Con.	No. of Lot or Part Lot.
3 J 955	Childs Joseph, o.....	Beecher st	41
3 J 961	Cassady Andrew, o.....	Bayly's svy	9
3 J 966	Cassie James, t.....	Maple st	15
3 J 97a	Chapman W H, t.....	Maple st	5,8
3 J 978	Clark John, o.....	Maple st	11
2 J 1030	Culbert Thomas, o.....	Askin st	116
2 J 1059	Carson John, o.....	Askin st	49
2 J 1061	Chantler Charles.....	Askin st	57
2 J 1079	Clampitt B G, o.....	Macfie's svy	B 7
2 J 1084	Connor James, o.....	Macfie's svy	B 8
J 667	Dorman James	Askin st	41
J 668	Dorman Dennis.....	"	41
B J 747	Dacey Hiram, o.....	e Whnff	1
3 J 822	Deadman E A, o.....	Morley Svy	4
3 J 823	Drennan Walter, o.....	w Whuff	4
3 J 874	Drought Thomas, o.....	Stanley st	2, 3
3 J 898	Day Geo, o.....	Centre st	13
3 J 959	Darvill David, o.....	Beecher	36
3 J 983	Day Geo, o.....	Maple st	14
3 J 1012	Drayton Henry, o.....	s Alma st	91
3 J 1015	Dunn Wm, o.....	s Alma st	35
3 J 1057	Davis A W, o.....	Askin st	45
2 J 1060	Dundass Robert, o.....	s Askin st	50
2 J 1068	Dunn Richard, o.....	n Bruce st	34
3 J 820	Deadman F W, t.....	Morley Svy	2
3 J 1038	Davis Evans, o.....	s Alma st	122
2 J 1082	Edwards Thomas, o.....	Macfie's Svy	B 4
2 J 1050	Elliott James, o.....	s Askin st	22
2 J 1051	Elliott Wm, o.....	"	22
3 J 724	Eagan John, o.....	1	pt 31
3 J 734	Eger R R, o.....	w Whuff	4
3 J 745	Eger John, o.....	"	4
3 J 943	Elliott John, o.....	"	4
3 J 997	Eagan T W, o.....	n Alma st	33
3 J 1014	Eagan James, o.....	s Alma st	89
3 J 836	Fitzgerald James, o.....	s Kent st	4
3 J 904	Foster Walter, t.....	O'Brien's Svy	17
3 J 919	Fipps Fred, t.....	Beecher st	23
3 J 968	Fear E W, o.....	Bayly's Svy	22
3 J 969	Froggett Reuben, t.....	"	22
3 J 988	Forihee Charles, t.....	n Askin st	102
3 J 989	Ferguson John, o.....	n Maple st	19
3 J 1022	Foreman James, o.....	n Askin st	108
3 J 1058	Foster Charles, o.....	s Askin st	47
3 J 1069	Farr Joseph H, n.....	n Bruce st	30
3 J 1073	Friend John, o.....	"	12
3 J 1088	Fletcher John, t.....	Macfie's Svy	b 11
1 J 715	Grant Geo, t.....	1	32
1 J 696	Griffith Geo, o.....	1	35
1 J 699	Griffith Oliver, o.....	h ft	35
1 J 769	Griffith John, o.....	b ft	36
1 J 701	Griffith Wm, o.....	b ft	36
1 J 702	Griffith Eli, o.....	b ft	36

No. on P.O. Assesmt't Roll.	Name.	Con.	No. of Lot or Part Lot.
1 J 703	Griffith Nathan, o.....	b ft	35
1 J 704	Griffith Eli, o.....	b ft	35
1 J 704	Griffith Nathan, o.....	b ft	35
1 J 724	Griffith Francis E, o.....	1	31
B J 725	Griffith Lyman, o.....	1	31
J 726	Griffith Eym, o.....	1	31
J 727	Griffith Tunis	1	31
3 J 757	Griffith Richard, t.....	1	30
3 J 794	Gunter Wm, o.....	Macfie's Svy	18
2 J 1117	Garside Thomas, o.....	Macfie's Svy A	19
3 J 818	Gordon Angus, o.....	Askin Svy	74
3 J 831	Grey Herbert, o.....	n Kent st 3, 4, 5	6
3 J 880	Givins John B, o.....	w Whuff	6
3 J 888	Green C, o.....	n Stanley st	8
3 J 906	Griffin Daniel, o.....	n Beth st	50
3 J 920	Groves Henry, o.....	Beecher st	24
3 J 921	Grayson Wm, t.....	s Beecher st	24
3 J 929	Garner Joseph S, t.....	s Beecher st	31
3 J 951	Grant Mr, o.....	s Beecher st	34
3 J 952	Gordon Thomas, o.....	s Beecher st	35
3 J 991	Garside Joseph, o.....	s Maple st	29
3 J 1007	Graham Samuel, o.....	n Alma st	22
3 J 1011	Gauld Alex, o.....	s Alma st	96
2 J 1049	Griffith Thomas, o.....	s Askin st	21
2 J 1065	Gillies John, t.....	n Askin st	78
2 J 1077	Greenwood Richard, o.....	n Bruce st	7
2 J 1080	Gidley Biech, o.....	Macfie's Svy	b 7
2 J 1092	Gowman C D, o.....	Macfie's Svy	f 4
3 J 748	Hayden Thomas T, o.....	e Whuff	1
3 J 790	Hessell C L, t.....	n Bruce st	63
3 J 792	Hessell Lewis, o.....	w Whuff	4
3 J 807	Hennessey R J, o.....	n Askin Svy	68
3 J 829	Hunt Wm, o.....	n Whuff sub 1, 2	2
3 J 844	Hyslop John, o.....	n Whuff sub 3	2
3 J 845	Hull Henry, o.....	n Whuff sub 4, 5	5
3 J 858	Hart James, t.....	Gordon's Svy	6
3 J 925	Haley John, t.....	s Beecher st	27
3 J 930	Heaman John, o.....	s Centre st	22, 23
3 J 932	Haugraves E E, o.....	R A	21
3 J 947	Hutchinson Charles, o.....	s Beecher st	31
3 J 960	Hodgins John, o.....	n Bayley Svy	3, 4
3 J 975	Hodgie George, o.....	n Maple st	9
3 J 981	Hadwick Allan, t.....	n Maple st	13
3 J 982	Howlett Mr, o.....	n Maple st	13
3 J 984	Harris Richard, t.....	n Maple st	14
3 J 985	Hoor Wm, o.....	n Maple st	16
3 J 1016	Hammond Jesse, o.....	n Askin st	100
2 J 1042	Hall Geo, o.....	w Wortley	123
2 J 1043	Hobbs W R, t.....	w Wortley	123
2 J 1044	Hunterford R B, t.....	w Wortley	125
2 J 1052	Hunter Wm, o.....	s Askin st	38
2 J 1053	Hoskings Gilbert, o.....	s Askin st	40
2 J 1110	Hill Thomas, o.....	Macfie's Svy	K 6
2 J 1114	Hick Thomas, o.....	Macfie's Svy	G 13
1 J 721	Ings Thomas, t.....	b ft	32
3 J 825	Ironsides Wm, t.....	w Whnff	2
3 J 872	Irwin Wm, o.....	n Stanley st	4
2 J 1096	Ingram John, o.....	Macfie's Svy	F 9
2 J 1098	Ingram L H, o.....	Macfie's Svy	F 9

P.O.	No. on Assesment Roll	Name.	Con.	No. of Lot or Part Lot.	P.O.	No. on Assesment Roll	Name.	Con.	No. of Lot or Part Lot.
3 J	710	Jarvis R D, o.....	b ft	34	3 J	924	Moyes James, o.....	Beecher st	25
3 J	731	Jones Thomas, t.....	w Whnff	3	3	931	Magee C J, o.....	R A	24
3 J	766	Johnston A C, o.....	1	28	3	935	McDonald Alexander, o.	R A	15
3 J	828	Johnston John, o.....	w Whnff	1	3	936	Morley C H, o.....	R A	14
3 J	851	Johnston James, o.....	w Whnff	5	3 J	941	McKinnon John, o.....	w Wortley	5
3 J	950	Jenkins John, t.....	s Beecher st	34	3 J	948	Morris Win, o.....	s Beecher st	29
3 J	987	Justin M J, o.....	n Maple st	18	3 J	957	Moore Win, t.....	n Beecher st	42
3 J	1009	Jones Geo, o.....	n Alma st	21	3 J	965	McIntosh Thomas, o....	Bayly's Svy	15
2 J	1046	Jarvis Lyman, o.....	n Bruce st	9	3 J	990	Middleton Geo, o.....	n Maple st	20
2 J	1048	James Wm, o.....	s Askln st	20	3	993	McLaren Jeremiah, o....	s Maple st	31
2 J	1083	Jones John W, o.....	Macfie's Svy	1,2	3 J	1000	Milne Geo, o.....	n Alma st	28
3 J	760	Kettlewell Wm, oc.....	1	29	3	1001	Milne John, o.....	s Maple st	37
3 J	761	Kettlewell Noah, o....	1	29	3	1002	Murray Michael, o.....	n Alma st	29
3 J	855	Kent John, o.....	b ft	33	3 J	1018	McCoy Samuel, o.....	n Askln st 103, 104	
3 J	863	Kelly Patrick, o.....	n Stanley st	13	3 J	1037	Morley Samuel, o.....	w Wortley pt	5
3 J	864	Kelly John, o.....	Askln st	79 & 80	3 J	1039	Moor A J, o.....	s Alma st	85
3 J	869	Kelly Geo, t.....	n Stanley st	9	3 J	1040	Moule John, o.....	Askln Svy 1, 2, 3	
3 J	1023	Kelly Ebenezer, o....	n Askln st	109	2 J	1041	Mason John, o.....	Askln Svy 4, 5	
3 J	1090	Kords Hiram, t.....	Macfie's Svy	F 1	2 J	1071	Moisse Wm, o.....	n Bruce st	25
3 J	732	Ling Joseph, o.....	w Whnff	3	2	1102	McPherson John, o....	Macfie's Svy K 19	
3 J	789	Loyd Thomas, o.....	"	4	2	1107	McKenzie John, o.....	Macfie's Svy K 22	
3 J	796	Laramy John, o.....	"	4	2 J	1115	Mil Abram, t.....	Macfie's Svy G 13	
3 J	850	Lang John, t.....	S R R st	1, 2	2 J	1119	McDonald James, o....	Macfie's Svy F 14	
3 J	854	Little James, o.....	w Whnff	3	2 J	1123	McMahon John, o.....	Macfie's Svy K 21	
3 J	1005	Landon Levi, o.....	n Alma st	26	1 J	707	Norton Geo, o.....	b ft	34
3 J	1019	Lidgley James, t.....	n Askln st	105	1 J	708	Norton Wm, o.....	1	34
3 J	1027	Lewis Levi, o.....	"	113	1 J	711	Norton Nelson, o.....	w Whnff	32
3 J	1055	Lynam James, t.....	s Askln st	42	1 J	712	Norton Nathan, f s....	w Whnff	32
2 J	1070	Lambert Geo, o.....	n Bruce st	29	1 J	713	Norton John, f s....	w Whnff	32
2	1109	Lovell Geo, o.....	Macfie's Svy	K 9	1 J	714	Norton Allan, f s....	w Whnff	32
2 J	1120	Leys F B, o.....	"	E 7	1 J	717	Newman Geo, t.....	1	33
3 J	709	McWebb Thomas, o.....	b ft	34	3 J	835	Nial Charles, o.....	s Kent st	3
3 J	730	Maddie Isaac, t.....	w Whnff	2	3 J	976	Nichols John H, t.....	n Maple st	9
3 J	745	McGregor John, o.....	1	31	3 J	1036	Nichols Lawrence, o....	s Askln st	42
3 J	746	Mitchel Wm, t.....	1	30	3 J	815	Noie Francis, t.....	w Whnff pt	4
3 J	756	McInnes Alex, o.....	1	30	3	839	Orchard J G, o.....	s Kent st	7
3 J	762	McMurray C H, o.....	1	29	3 J	855	O'Mara Steplen, o....	s Stanley st	12
3 J	786	McArthur Alex, o.....	w Whnff	1	3 J	915	Osbourn Alfred, t.....	n Beecher st	66
3 J	787	McMillan Duncan, o....	w Whnff	3, 4	3 J	934	O'Mara John, o.....	R A	17, 18
3 J	787	McMillan Duncan, o....	w Whnff	4	3 J	999	O'Donnell James, o....	n Alma st	34
3 J	799	McMullen John, o.....	w Whnff	4	3 J	1034	Overall John, o.....	s Alma st	128
3 J	800	McMullen Charles, o....	"	4	2 J	1116	Overly James, o....	Macfie's Svy C 1, 2, 3	
3 J	801	McMullen Fred, o.....	"	4	3	736	Peace John, sr, o.....	w Whnff	8
3 J	826	Mockler John, o.....	n Alma st	25	3	737	Peace John, jr, o.....	w Whnff	8
3 J	832	McAlpine Dr, o.....	s Kent st	1	3	738	Peace Wm, o.....	w Whnff	8
3 J	835	McArter C H, t.....	s Kent st	1	3 J	816	Platt Wm, o.....	n Alma st	1
3	840	McCulley Jas, o.....	n Kent st	7	3 J	870	Perry Solomon, o.....	n Stanley st	8
3 J	856	Morkin Michael, t.....	w Whnff	4	3 J	877	Pitts G W, t.....	n Stanley st	
3 J	862	Minchin J M, o.....	n Stanley st	14	3 J	891	Pontey Alex, sr, o....	s Centre st 1, 2, 3	
3 J	866	Murray Adam, o.....	n Stanley st	11, 12	3 J	892	Pontey Alex, jr, o....	s Centre st 1, 2, 3	
3 J	867	Murray Wm J, o.....	s Stanley st	16	4 J	893	Pontey Francis, o....	s Centre st 1, 2, 3	
3 J	868	McCloud Thomas, o....	s Stanley st	10	3 J	927	Pitt Geo, o.....	s Beecher st	28
3 J	881	Merredith Edward, o..	w Whnff	6	3 J	949	Pritchard Edward, t...	s Beecher st	29
3 J	884	Matthison B, o.....	s Stanley st	11	3 J	973	Patrick David, o.....	n Maple st	5
3 J	903	McMillan Duncan, o..	w Whnff	6	3 J	1003	Parnell Edward, t.....	n Alma st	27
3 J	908	McNamara Michael, o..	McBeth st	51	3 J	1008	Potter Geo, o.....	n Alma st	23
3 J	922	McLeod Norman, oc...	Beecher st	25					
3 J	923	McLeod James, oc....	Beecher st	25					

Con.	No. of Lot or Part Lot.	No. on P.O. Assesment Roll.	Name.	Con.	No. of Lot or Part Lot.	P.O. Assesment Roll.	Name.	Con.	No. of Lot or Part Lot.
Beecher st	25	2 J 1078	Parnell Edward, o.....	Macfie's Svy	B 6	3 J 896	Spence James, oc.....	n Centre st	17
. R A	24	2 J 1093	Priestly I H, o.....	Macfie's Svy	F 5	3 J 897	Sparks Thomas, o.....	n Centre st	13
. R A	15	2 J 1108	Peacock Charles, o.....	Macfie's Svy	K 10	3 J 917	Scott Samuel, o.....	s Beecher st	22
. R A	14	2 J 1094	Payne Wm, o.....	Macfie's Svy	F 10	3 J 918	Smith James, o.....	s Beecher st	23
w Wortley	5	2 J 1095	Payne Henry sr, o.....	Macfie's Svy	F 8	3 J 945	Smith W S, o.....	s Stanley st	1,2,3
s Beecher st	29	2 J 1096	Payne Henry, Jr, o.....	Macfie's Svy	F 8	3 J 946	Smith A M, o.....	Bayly's svy	18,19
n Beecher st	42	2 J 1121	Park E J, o.....	Whnff	pt 3 & 4	3 J 953	Stone Daniel, t.....	s Beecher st	35
. Bayly's Svy	15					3 J 954	Sealds James, o.....	n Beecher st	39
n Maple st	13					2 J 1112	Swartz J W, o.....	Macfie's svy	K 16
n Maple st	20					2 J 1101	Shaw James, o.....	Macfie's svy	J 1,2,3
s Maple st	31	3 J 801	Quick, Calvin, t.....	w Whnff	4	3 J 963	Smith Wm, o.....	Bayly's svy	14
n Alma st	28					3 J 979	Scott Hugh, o.....	n Maple st	12
s Maple st	37					3 J 992	Schram B, o.....	s Maple st	30
n Alma st	29					3 J 998	Scott John, o.....	n Alma st	33
Askin st 103, 104						3 J 1006	Skelly Wm, t.....	n Alma st	26
w Wortley pt	5	2 1104	Ross John, o.....	Macfie's Svy	K 26	3 1013	Sutton John, o.....	s Alma st	90
s Alma st	85	2 1105	Ross Thomas, o.....	Macfie's Svy	K 27	3 1024	Smith Richard, o.....	n Askin st	110
Askin Svy 1, 2, 3		2 J 1106	Ross Fred, o.....	Macfie's Svy	K 28	3 1025	Smith Samuel, o.....	n Askin st	110
Askin Svy	4, 5	1 J 765	Raisin Wm, t.....	Whnff	1	3 J 1026	Stinson Geo, t.....	n Askin st	110
n Bruce st	25	3 J 788	Roder Thomas R, o.....	w Whnff	3, 4				
Macfie's Svy K 19		3 803	Rispin Richard, o.....	w Whnff	4				
Macfie's Svy K 22		3 J 804	Rispin Luke, o.....	w Whnff	4				
Macfie's Svy G 13		3 J 812	Rowley Daniel, o.....	Askin Svy	72 & 73				
Macfie's Svy F 14		3 J 843	Richardson Alfred, o.....	Bayly's Svy	1, 2	3 J 956	Turner Wm, t.....	n Beecher st	42
Macfie's Svy K 21		3 J 848	Ryan John, t.....	S R R st	1, 2	3 928	Taylor Wm, o.....	S R R	3, 4
		3 J 901	Rothwell Fred, t.....	n Centre st	19	3 J 899	Taylor John, t.....	n Centre st	13
		3 J 907	Ryan James, o.....	McBeth st	52	3 J 900	Taylor R, o.....	n Centre st	19
		3 J 958	Rogers Charles, t.....	n Beecher st	43	3 J 670	Tinks James, o.....	b ft	34
		3 J 962	Riddle Abram, o.....	Bayly Svy	13	1 J 686	Teuple Timothy, t.....	b ft	36
		3 J 970	Reminder Geo, t.....	"	22	1 J 687	Teuple John, o.....	b ft	36
b ft	34	3 J 971	Reminder Michael, t.....	"	22	1 J 688	Teuple J B, f.....	b ft	36
1	34	2 J 1045	Rossiter Charles, t.....	n Askin st	118	1 689	Teuple Benjamin, o.....	1	36
w Whnff	32	2 J 1047	Robertson Geo, n.....	s Askin st	19	1 690	Teuple Joseph, o.....	1	36
w Whnff	32	2 J 1063	Rowe Wm, n.....	"	61	1 J 721	Teup Calvin, t.....	1	32
w Whnff	32	2 1067	Ray Alfred, o.....	n Bruce st	35	3 J 739	Teuple Deliah, o.....	w Whnff	pt 8
1	33	2 1074	Ray Thomas, o.....	"	11	3 J 740	Teuple Albert, t.....	w Whnff	pt 8
s Kent st	3	2 1076	Reid John T.....	"	8	3 J 764	Tambling Thomas, o.....	1	pt 26
n Maple st	9					3 J 816	Thomas Samuel, o.....	s Alma st	92
s Askin st	42					3 J 882	Tyler John, o.....	s Stanley st	9
w Whnff pt	4					3 J 889	Twohey John, o.....	s Stanley st	7
		2 1075	Smith Henry, t.....	n Bruce st	10	3 J 890	Taylor John, o.....	12 Centre st	1,2,3
		2 J 1054	Sutherland John, o.....	s Askin st	42	3 J 894	Tozland Henry, o.....	12 Centre st	11
		3 J 1023	Steel Wm, o.....	n Askin st	115	3 905	Tanner Wm, t.....	O'Brien's svy	18
		2 J 1081	Scott Wm, o.....	Macfie's Svy	B 5	2 J 1066	Taylor James, o.....	n Bruce st	36
		2 J 1091	Spence Mr, o.....	Macfie's svy	F 2	2 J 1072	Tilson James, o.....	n Bruce st	16
		1 J 684	Summers Edward, o.....	Bayly's svy	3, 4	2 J 1100	Thompson Niman, o.....	Macfie's Svy	J 5
		1 J 685	Summers John, o.....	Bayly's svy	3, 4	3 J 1118	Thomas James A, o.....	Macfie's Svy	A 11
		1 J 692	Summers Wm, o.....	1	36				
		2 J 1122	Shanly James, o.....	Askin svy	13				
		1 J 706	Scott Robert, o.....	1	36				
		3 J 749	Secombe Richard, o.....	e Whnff	2	2 1113	Vallier Thomas, o.....	Macfie's Svy	K 30
		3 J 750	Secombe Fred, f.....	e Whnff	2				
		3 J 751	Stephens Richard, o.....	e Whnff	1				
		3 J 752	Stephens Roland, f.....	e Whnff	1				
		3 J 753	Stephens Herbert, f.....	e Whnff	1	3 S 733	Weldon Andrew, o.....	w Whnff	5
		3 J 795	Sandry Edward, t.....	Askin svy	70	3 J 793	Walmsby Wm, t.....	"	4
		3 J 791	Stinson Alex, o.....	n Bruce st	63	3 J 827	Ward Thomas, t.....	n Alma st	25
		3 J 797	Sullivan Morris, o.....	w Whnff	4	3 842	Waterman A G, o.....	n Kent st	2
		3 J 802	Stead Josiah, o.....	w Whnff	4	3 J 849	Wall Phillip, t.....	S R R st	1, 2
		3 J 811	Smith Thomas, o.....	Askin svy	71	3 J 873	Williams J C, t.....	n Stanley st	4
		3 J 819	Swift Wm, o.....	Moiley svy	2	3 J 875	White Geo, o.....	w Whnff	6
		3 J 821	Sanders Henry, o.....	Moiley svy	3	3 J 886	Wheaton W H, o.....	s Stanley st	13
		3 J 860	Sparrowhawk Richd, t.....	n Stanley st	15	3 J 939	Whitehouse Charles, o.....	McMillan's Svy	5,6
		2 J 1124	Scott Samuel, o.....	Macfie's svy	F 3	3 J 964	Weston Malcolm, t.....	Bayly's Svy	14
		3 J 876	Spearman James, t.....	n Stanley st	F 1	3 J 967	Westlake Wm, o.....	"	25
		3 J 883	Siddons J, o.....	"	F 10	3 J 972	Weld Wm, o.....	n Beecher st	45
		3 J 895	Spence David, o.....	n Centre st	12	3 J 1004	Wells Thomas, o.....	s Maple st	27

SECOND WARD—DIVISION NO. 4.

No. on P.O. Assessm't Roll.	Name.	Con.	No. of Lot or Part Lot.	No. on P.O. Assessm't Roll.	Name.	Con.	No. of Lot or Part Lot.
3 J 1020	Webb Henry, o.....n	Askin st	105	2	1111 Young Daniel, o.....	Macfie's Svy	K 8
3 J 1031	Wescott Thomas, o.....	s Alma st	121				
3 J 1032	Wescott W A, o.....	"	121				
2 J 1064	Webb Henry, o.....n	Askin st	78				

SECOND WARD—POLLING DIVISION NO. 4.

PART SECOND.

Persons entitled to vote at Municipal Elections only.

None.

SECOND WARD—POLLING DIVISION NO. 4.

PART THIRD.

Persons entitled to vote at Elections to the Legislative Assembly only.

None.

37 on th
of the T

4 J
4 J
4 J
4 J

4 J
4 J
4 J
4 J
4 J
4 J
4 J
4 J

4 J
4 J
4 J
4 J
4 J
4 J
4 J
4 J

4 J
4 J
4 J
4 J

4 J
4 J
4 J
4 J

THIRD WARD.

(COMPOSED OF POLLING DIVISIONS NOS. 5, 6, AND 7.)

POLLING DIVISION NO. 5.

Comprising that part of the Township bounded on the East by the Side Road between Lots 36 and 37 on the Broken Front and 1st Concession, on the North by the River Thames, on the West by the boundary of the Township, and on the South by the road in rear of the 1st Concession.

PART FIRST.

Persons entitled to vote at both Municipal Elections and Elections to the Legislative Assembly.

P.O. Asses'm't	No. on Roll	Name	Con.	No. of Lot or Part Lot.	P.O. Asses'm't	No. on Roll	Name	Con.	No. of Lot or Part Lot.
4 J	611	Armstrong Walter, o....	B	49	4 J	662	Flint Pirney, o.....	b ft	42
4 J	612	Armstrong Wm, f s.....	B	49	4 J	680	Frank Wm, o.....	b ft	39
4 J	602	Roler Walter, o.....	1	46	4 J	636	Griffith James E, t.....	B	48
4 J	610	Blinn W G, o.....	1	48	1 J	700	Griffith John, o.....	b ft	37
4 J	638	Bartley N H, o.....	b ft	43	1 J	701	Griffith Wm, o.....	b ft	37
4 J	719	Begue John.....	b ft	37	1 J	702	Griffith Eli, o.....	b ft	37
4 J	615	Cassady John.....	B	49	4 J	468	Harris John, t.....	A	49
4 J	616	Cassady Elias, o.....	A	49	4	643	Herrington Arial, o.....	b ft	45
4 J	630	Carroll Eugene, t.....	A	47	1 J	695	Hull Chapman, t.....	b ft	37
4	649	Charles John, o.....	b ft	44					
4 J	650	Coombs Charles, o.....	b ft	44					
4 J	651	Coombs John K, o.....	b ft	44					
4 J	658	Cornwall Hiram, o.....	b ft	45	4 J	600	James Burley, t.....	1	47
4 J	661	Colville J W, o.....	b ft	44	4 J	601	James Wm, o.....	1	47
4 J	666	Cassada James, o.....	b ft	42	4 J	608	James George, o.....	B	47
					4 J	663	Joyce Edwin, t.....	b ft	42
J	238	Dale Samuel,.....	1	41	4 J	665	Jarvis Nicholas, o.....	b ft	41
4	604	Duncan Robert, o.....	1	43	4 J	674	Jarvis R G, o.....	1	38
4 J	606	Dawson James, o.....	1	45	4 J	681	Jarvis F W H C, o.....	b ft	38
4 J	607	Dawson Edmund o,.....	1	47	4 J	682	Jarvis C H, f s.....	b ft	38
4 J	637	Duval John, o.....	b ft	45	4 J	683	Jarvis L V, f s.....	b ft	38
4 J	664	Dufton John, o.....	b ft	42					
4	667	Dorman James, o.....	1	41	4 J	618	Kilbourn John, o.....	A	50
4 J	668	Dorman Dennis, o.....	1	41	4 J	619	Kilbourn Byron, o.....	A	50
4 J	669	Dorman John R, o.....	b ft	39	4 J	623	Kains Archd, o.....	A	49
4	671	Deacon Daniel, o.....	1	39	4 J	624	Kains Wm, o.....	A	50
					4	652	Kenney F H, o.....	b ft	45
					4 J	653	Kenney C L, o.....	b ft	45
4 J	625	Elson Wm, o.....	A	47	1 J	694	Kelley Ebenezer, o.....	b ft	37
4 J	626	Elson Geo, o.....	A	48					
4 J	627	Elson John, o.....	A	49	4 J	603	Livingston Dancy, o....	1	45
4 J	629	Elson Sidney, o.....	A	47					
4	646	Elwood Ephraim, o.....	b ft	45					
4	620	Finch W C, o.....	A	49	1 J	251	Mair Wm, sr, o.....	1	38, 39
4 J	621	Finch A R, f s.....	A	49	1 J	252	Mair Wm, jr, f s.....	1	38, 39
4 J	622	Finch W H, f s.....	A	49	1 J	253	Mair John, f s.....	1	39
4 J	648	Fortner Jonas, o.....	b ft	45	4	597	McEwen David, o.....	1	49

THIRD WARD—DIVISION NO. 5.

P.O. Assessm't	No. on Roll.	Name.	Con.	No. of Lots or Part Lot.	P.O. Assessm't	No. on Roll.	Name.	Con.	No. of Lots or Part Lot.	
4 J	598	McEwen Robert	o	1	4	488	Skuse John, o	1	41
4 J	614	Mair Andrew,	o	B	4 J	613	Smith Comerford, o	B	50
4 J	616	Mackie Rufus, o	A	4	635	Stephens John, o	b f	45
4 J	631	Montagne John, o	B	4	641	Sadler Robert, o	b f	45
4 J	632	Montagne Joseph, o	B	4 J	655	Summers Robert, o	b f	45
4	633	Merriam Wm, o	b ft	4 J	656	Sissions Robert, o	b f	45
4 J	634	Merriam Wesley, o	b ft	4 J	657	Sissons Samuel, o	b f	44
4	644	Martin H H, o	b ft	1 J	673	Summers Geo, o	b f	37
4 J	645	Merriam Wallace, o	b ft	1 J	675	Summers James, o	b f	37
4 J	660	Merriam James, t	b ft	1 J	676	Summers Thomas, o	b f	37
					1 J	677	Summers Robert, o	b f	38
					1 J	693	Sherman James, o	b f	37
1 J	254	Nixon Wm, o	1						
1 J	255	Nixon John, o	1						
					4 J	249	Trobridge Wm, o	1	pt 37
					4 J	605	Tanton Henry, o	B	pt 48
					4 J	670	Thnks James, o	1	pt 40
4 J	609	Orman Merredith, o	B	J	687	Teuple John	b ft	pt 37
4 J	654	Osborn G D, t	b ft	J	688	Teuple J B	b ft	37
4 J	496	Petton Peter, o	1	4 J	250	Wilson Jonas, t	1	37
4 J	659	Princee James,	b ft	4 J	599	Wickerson Henry, o	1	48
					4 J	639	Wells B S, o	1	43
					4 J	647	Wells J B, o	b ft	46
					4 J	679	Waterman Richard, t	b ft	38
4 J	496	Rogers John, o	1						
4 J	672	Raymund John, o	b ft	4 J	678	Young Samuel, t	b ft	38

THIRD WARD—POLLING DIVISION NO. 5.

PART SECOND.

Persons entitled to vote at Municipal Elections only.

4	640	Ayling W J, o	b ft	pt 45		4	641	Sims John, t	b ft	pt 45
---	-----	---------------	-----------	------	-------	--	---	-----	--------------	-----------	------	-------

THIRD WARD—POLLING DIVISION NO. 5.

PART THIRD.

Persons entitled to vote at elections to the Legislative Assembly only.

None.

on the
wick Li
the We
and by

N
P.O. Ass
F

5 J
5 J
5 J
5 J
5 J
5 J

5 J
5 J

5 J
5 J
5 J
5 J

5 J
5 J
5 J
5 J
5 J
5 J
5 J
5 J
5 J

5 J
5 J
5 J
5 J
5 J
5 J
5 J
5 J
5 J
5 J

5 J
1 J
5 J
5 J
5
5
5 J

THIRD WARD.
POLLING DIVISION NO. 6.

Composing that part of the Township bounded on the East by the Side Road between Lots 36 and 37, on the 2nd Concession, by the Side Line between Lots 24 and 25 on the 3rd Concession, and by the Bostwick Line on the 4th Concession, on the North by the Road in rear of the 1st Concession, on the West by the Western Boundary of the Township, and on the South by the Line between Lots 9 and 10 on the Gore and by the Side Road between Lots 65 and 66 on the Talbot Road, East and West.

PART FIRST.

Persons entitled to vote at both Municipal Elections and Elections to the Legislative Assembly.

Con. No. of Lot or Part Lot.
... B 41
... B 50
... b f 45
... b f 45
... b f 45
... b f 45
... b f 44
... b f 37
... b f 37
... b f 37
... b f 38
... b f 37

... 1 pt 37
... B pt 48
... 1 pt 40
... b ft pt 37
... b ft 37

... 1 37
... 1 48
... 1 43
... b ft 46
... b ft 38

... b ft 38

... b ft pt 45

P.O.	No. on Asses'm't Roll.	Name.	Con.	No. of Lot or Part Lot.	P.O.	No. on Asses'm't Roll.	Name.	Con.	No. of Lot or Part Lot.
5 J	275	Arthur Wm, t.....	E T R	pt 71	5	475	Doyle Benjamin, o...E T R		pt 75
5 J	415	Andrews Adolphus ...	"	pt 70	5 J	558	Decker Gideon, o...W T R		pt 69
5	424	Arnold Geo, o.....	W T R	pt 71	5	559	Decker Charles, o...Gore		pt 6
5 J	431	Anderson Henry, o...E T R		pt 70					
5	446	Askey Joseph, o...W T R		pt 71					
5	447	Askey Joseph C, o..."		pt 71					
5 J	556	Anderson Charles, o..."		pt 68	5 J	440	Ellson Dyer, t.....E T R		pt 71
5 J	596	Adair Jeremiah, o.....	2	pt 48					
5 J	400	Barber John, t.....	E T R	pt 69	5	420	Fortner Andrew, o...W T R		pt 70
5 J	402	Brown Thomas R.....	"	pt 70	5	443	Ferguson Geo, o...E T R		pt 71
5	429	Best L E, o.....	"	pt 71	5	444	Ferguson John, o...E T R		pt 71
5	432	Baker J L, o.....	"	pt 71	5	587	Fenwick James, o...W T R		pt 77
5 J	465	Bogue John, o.....	"	pt 73	5 J	588	Fenwick John, f s..."		pt 77
5 J	466	Bogue David, o.....	"	pt 73	5 J	591	Foreman Jephtha, o..."		pt 77
5 J	473	Burch D B, o.....	"	pt 74	5 J	592	Fletcher Levi, o..."		pt 78
5 J	478	Burch Calvin, o.....	"	pt 74	5 J	593	Fletcher Richard, f s...2		pt 48
5	485	Burrows Wm, o...W T R		pt 77					
5 J	575	Bowring Thomas, o...Gore		2					
5 J	576	Bowring Jesse, o..."		1					
5 J	577	Branston Wm, o..."		1	5	414	Geddes Arthur, o...E T R		pt 70
5 J	578	Branston Arthur, o..."		1	5 J	557	Germain Henry, t...W T R		pt 68
5 J	579	Burgess Truman, o...W T R		pt 74					
5 J	589	Baker Wm, o..."		pt 76					
5 J	590	Baker W R, f s..."		pt 76					
5 J	594	Blian Chancey, o...2		pt 48					
5 J	385	Comfort W J, o...W T R		pt 77	5 J	257	Harmon J R, o...E T R		pt 77
5 J	457	Campbell Henry, t..."		pt 70	5 J	406	Hunt James, o...W T R		pt 70
5 J	483	Cornell Jacob R, o..."		pt 76	5 J	421	Hudson John, o...E T R		pt 70
5	484	Cornell Jesse, o..."		pt 76	5 J	431	Harrison James, t..."		pt 71
5 J	489	Cornell Jesse H, sr, o..."		pt 78	5	434	Heard Robert, o..."		pt 71
5 J	490	Cornell Jesse H, jr, f s..."		pt 78	5	435	Heard Geo, o..."		pt 71
5 J	492	Cornell John H, f s..."		pt 78	5 J	436	Heard John, o..."		pt 71
5 J	493	Cornell James H, f s..."		pt 76	5 J	438	Heard Thos, o..."		pt 71
5 J	494	Cornell Geo, o..."		pt 78	5	441	Heard Wm, o..."		pt 71
5 J	495	Cornell John W, f s..."		pt 78	5 J	442	Halls Thomas, o..."		pt 70
5 J	502	Caldwell Thomas, t...Gore		pt 8	5 J	562	Hagar Henry, o...W T R		pt 71
					5 J	563	Hagar Charles, f s..."		pt 71
5 J	224	Dale Jacob, o...W T R		pt 68	5	568	Ireland Walter, o...Gore		pt 3
1 J	240	Dale John, o...E T R		pt 76	5 J	570	Ireland Geo, o...2		pt 48
5 J	259	Dowdell Wm, t...E T R		pt 77	5 J	571	Ireland John, o...2		pt 48
5 J	398	Disbrowe E H, o...E T R		pt 69					
5	405	Dingman Chas A, o...W T R		pt 69	J	371	Jones Geo W...E T R		pt 67
5	449	Daniels John, o...W T R		pt 71	5 J	413	Jackson Wm, o...E T R		pt 70
5 J	474	Doyle John, o...E T R		pt 75	J	528	Jones Hiram...E T R		pt 76

THIRD WARD—DIVISION NO. 7.

Con. No. of Lot or Part Lot.
 W T R pt 70
 " pt 70
 " pt 70
 E T R pt 71
 " pt 71
 " pt 71
 " pt 71
 " pt 72
 W T R pt 78

P.O. Assessm't	No. on Roll	Name	Con.	No. of Lot or Part Lot	P.O. Assessm't	No. on Roll	Name	Con.	No. of Lot or Part Lot
5 J	423	Williams J R, t.....	E T R	pt 70	5 J	583	Wilkins M D, f s.....	2	pt 48
5	450	Whiting John, o.....	"	pt 70	5 J	584	Wilkins John, f s.....	2	pt 48
5 J	464	Warren John, o.....	W T R	pt 73	5 J	585	Wilkins Thomas, o.....	2	pt 48
5 J	582	Wilkins Geo, o.....	2	pt 48	5 J	586	Wilkins Robert, o.....	2	pt 48

THIRD WARD—POLLING DIVISION NO. 6.

PART SECOND.

Persons entitled to vote at Municipal Elections only.

E T R pt 77
 W T R pt 67
 " pt 67
 " pt 67
 " pt 67
 " pt 67
 E T R pt 68
 " pt 69
 " pt 71
 W T R pt 70
 E T R pt 70
 " pt 70
 W T R pt 71
 " pt 71
 " pt 73
 " pt 73
 E T R pt 77
 Gore pt 9
 " 8
 " 7
 " 7
 " 7
 " 3
 2 48

5	580	Adair John, o.....	Gore	pt 1	5	448	Pow Peter, o.....	W T R	pt 70
---	-----	--------------------	------	------	---	-----	-------------------	-------	-------

THIRD WARD—POLLING DIVISION NO. 6.

PART THIRD.

Persons entitled to vote at Elections to the Legislative Assembly only.

None.

THIRD WARD.

POLLING DIVISION NO. 7.

Comprising that part of the Township bounded on the East by the Bostwick Line: North by the Line between Lots 9 and 10 in the Gore and by the Side Road between Lots 65 and 66, Talbot Road, East and West: West by the Western boundary of the Township, and South by the Southern boundary of the Township.

PART FIRST.

Persons entitled to vote at both Municipal Elections and Elections to the Legislative Assembly.

E T R pt 68
 W T R pt 68
 " pt 72
 " pt 77
 Gore pt 4
 " pt 4
 " pt 5
 2 pt 38,39
 2 pt 37
 2 pt 37
 E T R pt 39
 W T R pt 79
 " pt 68

P.O. Assessm't	No. on Roll	Name	Con.	No. of Lot or Part Lot	P.O. Assessm't	No. on Roll	Name	Con.	No. of Lot or Part Lot
6	505	Axford Geo, sr, o.....	Gore	pt 23	6 J	502	Baker Samuel, o.....	Gore	pt 23
6 J	506	Axford Geo, jr, o.....	Gore	pt 23	6 J	503	Baldinger Jacob, o.....	Gore	pt 24
6 J	536	Adams James, o.....	E T R	pt 64	6 J	513	Burrows James, o.....	Gore	pt 22
6 J	537	Adams Samuel, o.....	Gore	pt 13	6 J	514	Baker Wm, o.....	W T R	pt 54
6 J	303	Burtwhistle R, o.....	E T R	pt 53	6 J	518	Bell Samuel, o.....	Gore	pt 20
6 J	304	Burtwhistle J, o.....	"	pt 53	6 J	523	Baker Joseph, o.....	Gore	pt 18
6 J	315	Bennett Benjamin, o.....	"	pt 56	6 J	532	Bole John, t.....	Gore	pt 14
6	316	Bennett Jesse, o.....	"	pt 56	6 J	279	Cole Matthew, o.....	W T R	pt 49
6	333	Ballentine James, t..	"	pt 59	5 J	322	Craig Hugh, o.....	E T R	pt 59
6 J	334	Ballentine Thomas, t.	"	pt 59					

THIRD WARD—DIVISION NO. 7.

No. on P.O. Assesment Roll.	Name.	Con.	No. of Lot or Part Lot.	No. on P.O. Assesment Roll.	Name.	Con.	No. of Lot or Part Lot.	No. on P.O. Assesment Roll.	
6 J 336	Cummings C B H, o	W T R	pt 60	7 J 46	Legg C W, f s	E T R	pt 59	1	287 Shi
6 J 337	Cummings W M L, o	"	pt 60	7 J 47	Legg Henry, o	"	pt 59	6 J	302 Sta
6 J 338	Cummings J D, o	"	pt 60	6	277 Ling Joseph, o	"	pt 49	6 J	314 Su
6 J 521	Cook Isaac, o	"	pt 57	6 J 278	Ling Wm, o	"	pt 49	6 J	346 Su
				6 J 299	Leeson John, t	W T R	pt 52	6 J	347 Su
				6	341 Little John H, o	E T R	pt 60	6 J	348 Su
				6 J 342	Little Jacob E, o	"	pt 60	6 J	349 Su
				6 J 343	Little John A, o	"	pt 60	6	351 Su
				6 J 344	Little James K, o	"	pt 60	6 J	352 S
6 J 56	Davis James F, o	E T R	pt 55	6 J 345	Little Sobieski, o	"	pt 62	5 J	358 S
6	306 Davis Benj, sr, o	"	pt 54	5 J 356	Lancaster Thos, t	"	pt 63	5 J	359 S
6 J 307	Davis Benj, jr, o	"	pt 54	5 J 357	Lancaster Wesley, t	"	pt 63	5	360 S
6 J 308	Davis Eli L, o	"	pt 54	5 J 359	Love John, o	Gore	pt 19	5	361 S
5 J 325	Davis Burbidge, o	W T R	pt 57	6 J 520	Love Neal, o	"	pt 19	5 J	516 S
5 J 326	Davis A J, o	"	pt 57	6 J 524	Love Peter, o	"	pt 17	6 J	534
5 J 323	Davis Amos W, o	E T R	pt 58					6 J	544
5 J 320	Dangerfield J G	W T R	pt 56						
5 J 321	Dangerfield S, o	"	pt 56						
6 J 507	Doers James, o	Gore	pt 24						
6 J 522	Davis Harvey, o	W T R	pt 57	6 J 280	McGregor Daniel, o	E T R	pt 50		
6 J 526	Davis A C, o	Gore	pt 13	6 J 281	McGregor James, f s	"	pt 50		
6 J 527	Davis G W, f s	"	pt 16	6 J 282	McGregor Rob Roy, f s	"	pt 50	7	52
6 J 533	Dingman W G, o	"	pt 14	6 J 359	Mann Edward, t	W T R	pt 61	7 J	53
5 J 548	Dale Solomon, o	W T R	pt 65	5 J 355	Mill W H, o	E T R	pt 63	7 J	54
5 J 549	Dingman Jonas, o	"	pt 65	6 J 500	Mulligan John, f s	Gore	pt 25	6 J	295
5 J 550	Dingman C W, f s	"	pt 65	6 J 501	Mulligan Wm, f s	"	pt 26		
				6 J 510	McCully Geo, o	"	pt 23		
				6	517 May Henry, t	"	pt 20		
				6 J 525	May James, o	"	pt 17		
6 J 309	Ellwood Asa, t	W T R	pt 54	6 J 542	Moylan Michael, o	"	pt 11		
5 J 382	Eveison Wm, t	"	pt 64	6 J 543	Moylan John, oc	"	pt 11		
				5 J 547	McFarlane A, o	"	pt 10		
				6 J 529	Morden C P, o	"	pt 15		
				6 J 535	May Samuel	40	pt 14		
6 J 339	Fortner Sylvester, o	E T R	pt 60						
				6 J 283	Orr George, o	E T R	pt 51		
				6 J 284	Orr James, o	W T R	pt 50		
6 J 324	Hamilton Francis, t	E T R	pt 58	6 J 285	Orr James E, o	"	pt 50		
6 J 373	Hunt Samuel, o	W T R	pt 63	6 J 286	Orr John C, o	"	pt 50		
6 J 354	Hunt E S, f s	"	pt 63	6 J 292	Orr Robert, o	E T R	pt 51		
5 J 362	Hunt Isaac, o	E T R	pt 64	6 J 293	Orr Thos, o	"	pt 51		
5 J 363	Hunt Walter, o	"	pt 64	6 J 294	Orr Jacob, o	"	pt 51		
6 J 531	Hopkins Geo, o	Gore	pt 15						
6 J 538	Hunt Squires, o	"	pt 12						
6 J 539	Hunt Omar, f s	"	pt 12						
6 J 540	Hunt Llewellyn, f s	"	pt 12						
6 J 541	Hunt J N, o	"	pt 12						
				5 J 372	Piper Wm, o	E T R	pt 63		
				5 J 373	Piper John, o	"	pt 63		
6 J 330	Ingles John, o	E T R	pt 55	6 J 511	Piper Samuel, t	Gore	pt 25		
6 J 331	Ingles James, o	"	pt 59	5 J 545	Piper Samuel S, o	W T R	pt 64		
				5 J 546	Piper John, o	"	pt 64		
5 J 368	Jones Abram, o	E T R	pt 64	6 J 298	Ramey Franklin, o	W T R	pt 52		
5	369 Jones Hiram, o	"	pt 64	6 J 301	Ramey Silas, o	"	pt 52		
5 J 370	Jones David, o	"	pt 65	6 J 317	Rundle Philip, o	E T R	pt 56		
5 J 371	Jones Geo W, o	"	pt 65	5 J 318	Rundle Charles, o	"	pt 57		
6 J 528	Jones Hiram, o	Gore	pt 16	5	310 Rundle Thos, o	"	pt 57		
6 J 530	Jones Henry, t	"	pt 15	6 J 512	Reep Wm, t	W T R	pt 53		
6 J 300	Kennedy Robert, t	W T R	pt 52	7 J 51	Shore Hardy, o	E T R	pt 53		

THIRD WARD—DIVISION NO. 7.

P.O. Assesmt	No. on Roll	Name.	Con.	No. of Lot or Part Lot.	No. on P.O. Assesmt's Roll.	Name.	Con.	No. of Lot or Part Lot.
	1	287 Shields John, o.....	W T R	pt 51	6 J	327 Thomas Stephen, o.....	W T R	pt 55
	6 J	302 Staples Geo, o.....	"	pt 53	6 J	329 Thomas Edwin, o.....	"	pt 58
	6 J	314 Sutton Samuel, o.....	"	pt 56	5 J	364 Thornicroft Matthew, o.....	"	pt 65
	6 J	346 Sutton James, o.....	"	pt 61	5 J	365 Thornicroft Joseph, f s.....	"	pt 65
	6 J	347 Sutton Jacob E, o.....	"	pt 61	5 J	366 Thornicroft M H, f s.....	"	pt 65
	6 J	348 Sutton, Wm F, o.....	"	pt 61				
	6 J	349 Sutton John, t.....	"	pt 62				
	6 J	351 Sutton Micalah, o.....	"	pt 62	6 J	289 Vicary Wm, t.....	W T R	pt 51
	6 J	352 Sutton Samuel H, o.....	"	pt 64	6 J	290 Vicary Walter, t.....	"	pt 51
	5 J	358 Scott Hobkirk, o.....	E T R	pt 64	6 J	291 Vicary Gilbert, t.....	"	pt 53
	5 J	359 Scott John, o.....	W T R	pt 64	6 J	296 Vail Wm A, o.....	E T R	pt 53
	5	360 Scott James, o.....	"	pt 64	6 J	297 Vail Austin, o.....	"	pt 53
	5	361 Scott Walter, o.....	"	pt 21	6 J	313 Vicary Wm, t.....	"	pt 55
	5 J	516 Snale J H, t.....	Gore	pt 14				
	6 J	534 Sutton Matthias, o.....	"	pt 11				
	6 J	544 Smith J A,	"					
	7	52 Taylor Wm, sr, o.....	E T R	pt 54	2 J	288 Weldon Andrew, o.....	W T R	pt 51
	7 J	53 Taylor Wm, jr, f s.....	"	pt 54	6 J	310 Wilson Jeremiah, o.....	"	pt 55
	7 J	54 Taylor Alex, f s.....	"	pt 54	6 J	311 Wilson Charles, o.....	"	pt 55
	6 J	295 Thomas John, o.....	"	pt 52	6 J	312 Weldon Thos, o.....	E T R	pt 55
					6 J	335 Wilson R R, o.....	W T R	pt 59
					6 J	340 Weir John, t.....	E T R	pt 60
					6 J	315 Weldon Thomas, o.....	Gore	pt 21

THIRD WARD—POLLING DIVISION NO. 7.

PART SECOND.

Persons entitled to vote at Municipal Elections only.

6	508 Thorn James, t.....	Gore	pt 23
---	-------------------------	------	-------

THIRD WARD—POLLING DIVISION NO. 7.

PART THIRD

Persons entitled to vote at Elections to the Legislative Assembly only.

None.

FOURTH WARD.

(COMPOSED OF POLLING DIVISIONS NOS. 8 AND 9.)

POLLING DIVISION NO. 8.

Comprising that part of the Township bounded on the East by the Side Line between Lots 12 and 13, on the North by the Concession Line between the 3rd and 4th Concessions, on the West by the Bostwick Line, and on the South by the Southern boundary of the Township.

PART FIRST.

Persons entitled to vote at both Municipal Elections and Elections to the Legislative Assembly.

P.O. Assessm't	No. on Roll	Name.	Con.	No. of Lot or Part Lot.	P.O. Assessm't	No. on Roll	Name.	Con.	No. of Lot or Part Lot.
7 J	1	Auckland Geo, sr, o	9	pt 21	7 J	150	Chivers Geo, o	6	pt 15
7 J	2	Auckland Jehu, f s	9	pt 21	7	151	Chivers James, oc	9	pt 15
7 J	3	Auckland Geo, jr, f s	9	pt 21					
1	118	Anderson Wm, o	4	pt 16					
12 J	135	Anderson James, o	5	pt 22					
12 J	136	Anderson Peter, o	5	pt 22	7	4	Dawson Jonathan, o	9	pt 22
11 J	263	Anderson Henry, o	4	pt 14	6 J	5	Dawson Geo, o	9	pt 22
11 J	264	Anderson H A, f s	5	pt 16	6	6	Dawson Thomas, o	9	pt 21
11 J	273	Anderson Fred, o	4	pt 14	6 J	7	Dawson James A, o	9	pt 21
11 J	274	Anderson A F, f s	4	pt 14	7	22	Donnahne Denbis, o	9	pt 18
					12 J	128	Danbuey Barak, o	4	pt 20
					12 J	146	Danbuey Henry, o	4	pt 20
					7	22	Doan G W, o	8	pt 15
7 J	10	Baker Richard, o	8	pt 22					
7 J	11	Baker Wm J, o	8	pt 22					
7 J	15	Bainard David, o	9	pt 21	7 J	21	Errington Ralph, t	8	pt 18
7 J	23	Bainard Jacob, o	9	pt 17	7 J	41	Errington Fred W, o	7	pt 19
7 J	70	Byrne James, o	6	pt 20	7 J	42	Errington F C, f s	7	pt 19
7 J	85	Bennett Henry, o	6	pt 16	7 J	68	Engery Henry, t	6	pt 20
7 J	94	Blakie Wm, o	5	pt 22					
12 J	95	Blakie Walter, o	5	pt 22					
12	95	Blakie James, o	5	pt 22					
12 J	106	Barrett Ezekiel, t	5	pt 19					
12 J	107	Barrett John, t	5	pt 19					
1 J	113	Begg John, o	5	pt 16					
1 J	114	Begg Alex, o	5	pt 16	7	31	Fisher Vicars, o	8	pt 16
12	133	Biddulph Walter, o	4	pt 21	7 J	32	Fisher Madison W, o	7	pt 15
12 J	137	Burnard John, o	5	pt 23	7 J	33	Fisher R C, o	7	pt 15
12 J	145	Brown James, o	4	pt 22	7 J	59	Forbes Wm, o	6	pt 20
1 J	163	Bruce James, o	4	pt 16	7 J	87	Foster John, t	6	pt 16
1 J	164	Bruce John, o	4	pt 16	7 J	90	Foreman James, o	5	pt 23
1 J	165	Bruce Robert, o	4	pt 16	12 J	119	Forbes John, o	4	pt 17
7 J	9	Brady James, o	8	pt 13	7	8	Ferguson Colin, o	7	pt 13
7 J	13	Bidner Wm, t	8	pt 15	7 J	15	Fisher Arthur, o	7	pt 15
7 J	14	Barry Wm, t	8	pt 15	7 J	28	Farmer Henry, o	9	pt 13
12		Barney John, t	5	pt 20	7 J	138	Flowers John, o	7	pt 13
					11 J	20	Fraser Wm, o	4	pt 13
7 J	13	Carrothers Geo, t	8	pt 21					
7 J	30	Coughlin John T, o	9	pt 16	7 J	24	Glenn Wm P, o	8	pt 17
7	62	Cook Benj, o	7	pt 22	7 J	37	Glenn James A, o	8	pt 17
7 J	63	Cook Alonzo, f s	7	pt 22	12 J	143	Gerrard Charles, o	4	pt 24
7 J	64	Cook Fernen, f s	7	pt 22	12 J	144	Gerrard Thomas C, o	4	pt 24
12	139	Crinklaw John, sr, o	4	pt 23					
12 J	140	Crinklaw John, jr, t	5	pt 24					
12 J	147	Crinklaw James W, o	4	pt 21					
7	12	Collins Richard, o	8	pt 15	1 J	110	Hebblethwaite Alfred, o	5	pt 17
7	19	Coughlin Barth, t	8	pt 15	7 J	111	Hawkshaw W S, o	6	pt 16
7 J	25	Coughlin John C, o	9	pt 15	1 J	122	Hunt Alex, t	5	pt 18
7 J	26	Coughlin Timothy, o	9	pt 15					

P.O. Assessm't	No. on Roll	Name.	Con.	No. of Lot or Part Lot.
7 J	140	Jo		
7 J	141	Jo		
7 J	142	Jo		
7 J	143	Jo		
7 J	12 J			
7	50	J		
7 J	69	J		
7 J	72	J		
7 J	73	J		
7 J	74	J		
7 J	84	J		
7 J	89	J		
12 J	102	J		
12 J	103	J		
12 J	104	J		
12 J	105	J		
12 J	134	J		
J	371			

7 J	20			
7 J	21			
7 J	14			
7 J	14			
7 J	15			
7 J	15			
11 J	20			
11 J	20			
11 J	20			

7 J				
7 J				
7 J				
7 J				

7 J

7 J

7 J

7 J

7 J

7 J

7 J

7 J

7 J

7 J

7 J

7 J

7 J

7 J

7 J

7 J

7 J

7 J

7 J

7 J

7 J

7 J

7 J

7 J

7 J

7 J

7 J

FOURTH WARD—DIVISION NO. 8.

P.O.	No. on Asses'm't Roll.	Name.	Con.	No. of Lot or Part Lot.	P.O.	No. on Asses'm't Roll.	Name.	Con.	No. of Lot or Part Lot.
7 J	140	Johnston Alex, o.....	6	pt 14	12	120	Manning Alonza, o....	5	pt 17
7 J	141	Johnston James, sr, o..	7	pt 15	1 J	121	Manning Wm, o.....	5	pt 18
7 J	142	Johnston James, jr, f.s..	6	pt 15	1	123	Mennill Geo, o.....	5	pt 18
7 J	143	Johnston Peter, f s.....	6	pt 14	1 J	124	Mennill Joseph, o.....	5	pt 18
7 J	12	Jones John, o.....	8	pt 21	1 J	125	Mennill G H, o.....	5	pt 23
7 J	50	Jackson Minchin, o.....	7	pt 17	12 J	141	McDonnell James, o..	4	pt 23
7 J	69	Johnston Geo, o.....	6	pt 20	12 J	142	McGregor James, o..	4	pt 14
7 J	72	Johnston Peter, o.....	6	pt 20	J	130	McGill Peter,.....	7	pt 13
7 J	73	Johnston Wm, o.....	6	pt 20	7 J	137	McGregor John,.....	6	pt 15
7 J	74	Johnston David, o.....	6	pt 19	7 J	153	McMillan Duncan, o..	6	pt 13
7 J	84	Jackson Thomas, o.....	6	pt 16	7 J	154	McMillan John, t.....	6	pt 14
7 J	89	Jackson Richard, o.....	6	pt 18	7	155	Martin Wm, o.....	6	pt 14
12 J	102	Johnston John, sr, o..	5	pt 21	11 J	266	Munro John, o.....	5	
12 J	103	Johnston John, jr, f.s..	5	pt 20					
12 J	104	Johnston David, o.....	5	pt 19	1	112	Nichol Thomas, o.....	5	16,17
12 J	105	Jarvis W W, o.....	5	pt 22	11 J	271	Nichol Adam, o.....	4	15
12 J	134	Jackson Charles, o.....	4	pt 24					
J	371	James G W.....	4						
7 J	20	Kindree Joshua, o.....	8	pt 15	7 J	24	O'Brien James, t.....	8	pt 15
7 J	27	Kerr Murdock, o.....	6	pt 15					
7 J	144	Kerr Murdock, o.....	7	pt 14					
7 J	145	Kerr Alex, o.....	7	pt 14					
7 J	147	Kerr Donald, t.....	7	pt 14					
7 J	158	Kerr Wm, o.....	5	pt 13	7 J	55	Pottary Wm, t.....	8	pt 23
11 J	262	Kerr Alex, o.....	5	pt 13	7 J	65	Passmore Thomas, o..	7	pt 21
11 J	268	Kerr John, o.....	5	pt 13	7 J	75	Purdy Richard, o.....	7	pt 19
11 J	269	Keller T M, t.....	4	pt 15	7 J	76	Purdy Ira, f.s.....	7	pt 19
					7 J	149	Peel Wm T, o.....	6	pt 15
7 J	47	Legg C W, f s.....	7	pt 22					
7	48	Legg Henry, o.....	7	pt 22	7	81	Rose Daniel, o.....	6	pt 17
7 J	48	Legg Joseph, o.....	7	pt 22	7 J	91	Rutherford John, t....	5	pt 23
7	49	Lewis Samuel, o.....	8	pt 21	7 J	92	Rutherford Peter, t....	5	pt 23
7 J	66	Learn Wm N, o.....	6	pt 21	7	6	Rose Richard, o.....	8	pt 13
7 J	67	Learn P D, o.....	6	pt 21	7 J	7	Rose R G, o.....	8	pt 13
					7 J	10	Regan Dennis P, o....	8	pt 14
					7 J	11	Regan Wm F, o.....	8	pt 14
7 J	17	McPherson Hugh, o....	9	pt 19					
7 J	18	McPherson Arch, o.....	9	pt 19					
7 J	19	McPherson Donald, o..	9	pt 19					
7 J	20	McPherson Duncan, o..	8	pt 18	7	38	Smith Walter, o.....	8	pt 18
7 J	25	Meadows Thomas, o..	8	pt 18	7 J	51	Shore Hardy, o.....	8	pt 23
7 J	26	McPherson Arch, o.....	9	pt 18	7	58	Shaver Charles, o.....	8	pt 23
7 J	27	McPherson John, sr, o..	8	pt 18	7 J	71	Smith R F, o.....	7	pt 20
7 J	28	McPherson John, jr, f s	8	pt 18	12 J	100	Scott Charles, o.....	6	pt 21
7 J	40	Millson G H A, f s.....	7	pt 18	12 J	101	Scott Stewart, o.....	6	pt 21
7 J	43	McPherson Dugald, o..	8	pt 20	1	108	Scott Wm, o.....	6	pt 18
7 J	45	Mann John, o.....	7	pt 21	1 J	109	Scott Alex, o.....	6	pt 18
7 J	57	McPherson Gilbert, o..	7	pt 23	12 J	117	Shore John, o.....	5	pt 19
7 J	60	Milne James, o.....	5	pt 22	12 J	127	Simpson James, o.....	5	pt 20
7 J	61	Milne Robert, o.....	7	pt 23	12 J	129	Shore John, sr, o....	5	pt 20
7 J	77	McDonald Wm, o.....	6	pt 18	12	129	Shore John, sr, o....	5	pt 20
7 J	78	McDonald Alex, o.....	6	pt 18	12 J	130	Shore Wm, o.....	5	pt 20
7 J	80	McIntosh James, o....	7	pt 18	12 J	131	Shore Geo, o.....	5	pt 23
7	87	Murdock Alex, o.....	6	pt 16	12 J	138	Shcarer John, o.....	8	pt 15
7	88	Murray Charles, o....	7	pt 16	7 J	17	Scott Andrew, o.....	7	pt 15
1 J	97	McDougal Angus, o....	6	pt 22	7 J	21	Sleight Robert, o....	5	pt 14
7 J	98	McDougal Duncan, f.s.	6	pt 22	7 J	157	Smith Geo, o.....	4	pt 16
7 J	99	McDougal James, f.s..	6	pt 22	11 J	270	Stevens Wm,.....	4	pt 19
7 J	93	Milne Peter, o.....	6	pt 23	12	154	Shore Thomas, o.....	4	pt 16
12 J	115	Manning Emerick, o..	5	pt 17	12 J	155	Shore F R, o.....	4	pt 21

d 13,
twick

of Lot
or
pt Lot.
pt 15
pt 15

pt 22
pt 22
pt 21
pt 21
pt 18
pt 20
pt 20
pt 15

pt 18
pt 19
pt 19
pt 20

pt 16
pt 15
pt 15
pt 20
pt 16
pt 23
pt 17
pt 13
pt 15
pt 13
pt 13
pt 13

pt 17
pt 17
pt 24
pt 24

pt 17
pt 16
pt 18

FOURTH WARD—DIVISION NO. 9.

P.O. Assessm't	No. on Roll	Name.	Con.	No. of Lot or Part Lot.	P.O. Assessm't	No. on Roll	Name.	Con.	No. of Lot or Part Lot.
12 J	156	Shore W M, o.....	4	pt 21	6 J	15	White James, o.....	9	pt 20
12 J	157	Shore Fred, o.....	4	pt 18	7 J	44	Weckes Geo, o.....	8	pt 21
12 J	158	Shore F H, f s.....	4	pt 18	7 J	79	Wright Wm, o.....	7	pt 17
12 J	159	Shore Vincient, f s.	4	pt 18	7 J	82	Wright Edward, o.....	6	pt 17
					7 J	83	Wright John, f s.....	6	pt 17
					12 J	150	Wall Henry, o.....	4	pt 20
7 J	14	Taylor Robert, o.....	9	pt 21	7 J	16	Wilson Henry, o.....	8	pt 15
7 J	29	Turnbull John, o.....	8	pt 16	11 J	267	Wright James, o.....	5	pt 16
7 J	148	Towe Edward, o.....	6	pt 15					
7 J	146	Thompson James, t.....	7	pt 14					

FOURTH WARD—POLLING DIVISION NO. 8.

PART SECOND.

Persons entitled to vote at Municipal Elections only.

7	8	McCully Robert, o.....	8	pt 23	1	126	Manning Sylvester, o... 5	pt 19
7	9	McCully John, o.....	8	pt 23				

FOURTH WARD—POLLING DIVISION NO. 8.

PART THIRD.

Persons entitled to vote at Elections to the Legislative Assembly only.

None.

FOURTH WARD.

POLLING DIVISION NO. 9.

Bounded on the East by the Side Road between Lots 18 and 19 on the 1st and 2nd Concessions and the Line between Lots 12 and 13 on the 3rd Concession, on the North by the Commissioners' Road, on the West by the Eastern boundary of Divisions Nos. 5 and 6, and on the South by the Concession Line between the 3rd and 4th Concessions.

PART FIRST.

Persons entitled to vote at both Municipal Elections and Elections to the Legislative Assembly.

P.O. Assessm't	No. on Roll	Name.	Con.	No. of Lot or Part Lot.	P.O. Assessm't	No. on Roll	Name.	Con.	No. of Lot or Part Lot.
12 J	149	Archer Thomas, o.....	3	pt 21, 22	1 J	184	Blakie James, o.....	3	pt 18
12 J	151	Archer John, o.....	3	pt 20	1 J	185	Blakie Alex, f s.....	3	pt 18
1 J	189	Archer James, t.....	2	pt 25	1 J	192	Beattie Richard, t.....	3	pt 17
1 J	769	Adams Lewis, o.....	Main st	pt 5	1 J	244	Bryant Benjamin, o.....	2	pt 36
					1	262	Biddulph Richard, o.....	2	pt 32
					1 J	770	Baker Charles, o.....	Upper Main st	35
					1 J	783	Bruce Alex, o.....	1	pt 24
5 J	172	Brient Wm, o.....	3	pt 23	11 J	381	Beattie David, o.....	2	pt 20

P.O. Assessm't	No. on Roll
11 J	409 E
11 J	410 F
11 J	411 G

1 J	206
1 J	297
1	229
1 J	221
1 J	222
1 J	227
1 J	229
1 J	230
3 J	763
1 J	781
1 J	575

1 J	3
-----	---

12	
1	
1	
1	
1	
1	
11	
11	
11	
11	

FOURTH WARD—DIVISION NO. 9.

No. on P.O. Assessm't	Name.	Con.	No. of Lot or Part Lot.	No. on P.O. Assessm't	Name.	Con.	No. of Lot or Part Lot.
11 J 409	Beattie Wm, o	2	pt 20	5 J 170	George Henry, o	2	pt 36
11 J 410	Beattie Wm H, fs	2	pt 20	1	237 Greer Samuel, o	1	pt 31
11 J 411	Beattie Geo, fs	2	pt 20	3 J 768	Greer Wm, fs, Jas, o	1	Upper Queen st 2, 4
				1 J 408	Grieve Elliott, o	1	pt 20
				11 J 412	Grieve Wm, o	2	pt 23
				J 583	Griffith J H	1	pt 31
				1 J 724	Griffith Francis E, o	1	pt 31
				3 J 725	Griffith Lyman, o	1	pt 31
				3 J 726	Griffith Ezra, o	1	pt 31
				3 J 727	Griffith Tunis, o	1	pt 31
1 J 206	Clary Patrick, o	2	pt 27, 28				
1 J 207	Clary John, o	2	pt 27, 28				
1 J 229	Caldwell Matthew, o	2	pt 30				
1 J 221	Caldwell G W, fs	2	pt 30				
1 J 222	Caldwell J M, fs	2	pt 31				
1 J 227	Cleveland J D, o	1	pt 31				
1 J 229	Cochrane John, t	1	pt 31	1 J 173	Hyslop Richard, o	3	pt 23
1 J 230	Cochrane Thomas, t	1	pt 29	1 J 174	Hyslop Adam, o	3	pt 23
3 J 763	Cooper E H, o	2	pt 21	5 J 181	Hooper Frank, t	3	pt 21
1 J 781	Clubb Alex, oc	1	pt 22	1 J 203	Haldane Wm, o	2	pt 26
1 J 579	Cottam B, oc	1	pt 22	1 J 204	Haldane James, o	2	pt 27
				1 J 205	Haldane Joseph, o	2	pt 25
				1 J 778	Hadwin Thomas, o	1	pt 14
				11 J 275	Hendra Wm sr, o	3	pt 14
				11 J 276	Hendra Wm, jr, o	3	pt 20
				1 J 403	House Isaac, t	3	pt 20
1 J 405	Duguid John, o	2	pt 21				
1 J 406	Duguid Wm, o	2	pt 21				
1 J 160	Ducey John A, o	3	pt 20	1 J 183	Jeffery Geo, t	2	pt 30
5 J 167	Davey James, o	3	pt 24	3 J 766	Johastou A C, o	1	pt 28
5 J 171	Dean Edward, o	3	pt 23	11 J 272	Johnston Charles, t	3	pt 15
1 J 186	Dacey Hiram, o	3	pt 18				
1 J 196	Dexter John N, t	3	pt 25				
1 J 208	Dale Nathan, o	1	pt 27				
1 J 213	Duncan Geo, o	2	pt 28				
1 J 214	Duncan McKenzie, o	2	pt 28				
1 J 217	Dale John, o	1	pt 29				
1 J 218	Dale Ezekiel, o	1	pt 29				
1 J 224	Dale Jacob, sr, o	1	pt 30	3 J 759	Kettlewell Richard, o	1	pt 29
1 J 226	Dale Jacob, jr, o	1	pt 31	1 J 777	Kay John, o	1	pt 25
1 J 238	Dale Samuel, o	2	pt 34				
1 J 239	Dale David H, o	2	pt 35				
1 J 263	Dale Solomon, o	2	pt 33				
1 J 264	Dale Wm, fs	2	pt 33				
1 J 265	Dale J A, fs	2	pt 33	1 J 232	Linfoot Wm, t	1	pt 30
1 J 266	Dale Joseph, o	2	pt 33	1 J 407	Lind Adam, o	2	pt 21
1 J 267	Dale Charles, fs	2	pt 33	1 J 473	Land Edmund, o	1	pt 32
1 J 268	Dale David, fs	2	pt 33				
1 J 397	Dowling Robert, o	2	pt 22				
1 J 398	Dowling John, fs	2	pt 22				
1 J 399	Dowling Nicholas, fs	2	pt 22				
1 J 403	Ducham John, t	1	pt 24				
				12 J 141	McDonnell James, o	3	pt 24
				12 J 142	McGregor James, o	3	pt 24
				1 J 175	Morgan David, t	3	pt 22
				1 J 209	Murray Andrew, o	3	pt 28
				1 J 210	Murray James, fs	3	pt 28
				1 J 211	Murray Wm, fs	3	pt 28
				1 J 231	Miner John, o	1	pt 30
				1 J 771	Martyn Oliver, o	1	Upper Queen st, 6, 7
				1 J 775	Murray Geo, o	1	" " 2, 4
				1 J 784	Mihell Leonidas, o	1	pt 24
				11 J 380	Murray Peter, o	3	pt 13
				11 J 382	Marr Alex, sr, o	2	pt 21
				11 J 383	Marr Robert fs	2	pt 21
				11 J 384	Marr Alex, fs	2	pt 21
				1 J 395	McWilliam James, o	2	pt 24
				11 J 414	Murray Geo, sr, o	2	pt 19
				11 J 415	Murray Robert, o	2	pt 19
				11 J 416	Murray Geo, jr, fs	2	pt 19
				1 J 586	Mihell Wm, o	1	pt 24
1 J 225	Eagan John, o	1	pt 31				
12 J 153	Flawn Caleb, o	3	pt 19				
1 J 166	Frank Wm P, o	3	pt 16				
1 J 194	Frank John B C, t	3	pt 16				
1 J 200	Ferguson Daniel, fs	2	pt 25				
1 J 199	Ferguson, Peter, o	2	pt 25				
1 J 269	Faaser Samuel, o	2	pt 34				
1 J 270	Fraser Robert, o	2	pt 34				
11 J 386	Frank W J W, o	2	pt 22				
11 J 387	Frank George, o	2	pt 22				
11 J 388	Frank Thomas, o	3	pt 22				
J 636	Frank G B R	3	pt 14				

FOURTH WARD—DIVISION NO. 9.

No. on P.O. Assessm't	Name.	Con.	No. of Lot or Part Lot.	No. on P.O. Assessm't	Name.	Con.	No. of Lot or Part Lot.
1 J	182 Nichols Lawrence, o.....	2	pt 30	1 J	197 Ryan David, t.....	2	pt 25
1 J	201 Nixon Robert, o.....	1	pt 25	1 J	228 Raisin Wm, o.....	1	pt 31
1	215 Nichols John, o.....	2	pt 30	11 J	385 Riddle Geo, o.....	2	pt 24
1 J	216 Nichols Henry, o.....	2	pt 30	1 J	574 Riddle Samuel, o.....	1	pt 20
1 J	223 Nichols David, o.....	2	pt 30				
5 J	271 Nixon Walter, o.....	2	pt 36	1 J	162 Shaver John W, o.....	3	pt 17
3 J	754 Norton Daniel, o.....	1	pt 30	1 J	188 Shaver Geo, o.....	2	pt 25
3 J	755 Norton Geo, o.....	1	pt 30	1 J	190 Shaver Jesse, o.....	3	pt 17
1 J	396 Nixon Geo, o.....	2	pt 23	1	191 Shaver Burras, o.....	3	pt 17
1 J	400 Nixon Wm, o.....	1	pt 24	1	195 Shaver John, o.....	2	pt 24
1	401 Norton Mr, t.....	1	pt 24	1 J	776 Smith Edward, q.....	1	pt 26
1 J	402 Nixon John, t.....	1	pt 24	11 J	413 Stewart C B, o.....	2	pt 19
1 J	711 Norton Nelson, o.....	1	pt 32				
1 J	712 Norton Nathan, f s.....	1	pt 32	1	235 Teeple Deliah, o.....	1	pt 33
1 J	713 Norton John, f s.....	1	pt 32	1 J	236 Teeple Thomas, o.....	1	pt 33
1 J	714 Norton Alban, f s.....	1	pt 32	5 J	249 Trobridge Wm, o.....	2	pt 35
7 J	404 Nixon James, o.....	3	pt 20	1	772 Tupper M F, o.....	1	Upper Queen st 24
				1 J	773 Tupper R E, o.....	1	Upper Queen st 9, 11
1 J	233 Orchard Wm, o.....	1	pt 32	1 J	779 Tucker Matthew, o.....	1	pt 25
1 J	262 Orman Geo, o.....	2	pt 32	1	394 Tomlinson Thos, o.....	1	pt 23
1 J	584 Odell Leonard, o.....	1	pt 24				
1 J	585 Odell Henry M, o.....	1	pt 24	5 J	250 Wilson Jonas, t.....	1	pt 36
				12 J	150 Wall Henry, t.....	3	pt 21
12 J	152 Pool Edmund, t.....	3	pt 19	5 J	168 White Firmen, o.....	2	pt 36
1 J	176 Perkins Levi, o.....	3	pt 22	1	178 Whitehead Wm, o.....	3	pt 21
1	177 Perkins Caleb, o.....	3	pt 22	1 J	202 Wilkins Charles, o.....	2	pt 25
1	179 Perkins Curtis, o.....	3	pt 21	1 J	212 Watkins David, t.....	2	pt 28
5 J	241 Pincomb John, o.....	2	pt 35	1	234 Wyatt George, o.....	1	pt 32
5 J	242 Pincomb Richard, o.....	2	pt 35	1	774 Westland Wm, o.....	u	Queen st 1
5 J	272 Powell Thomas, t.....	2	pt 36	1 J	780 Walker James, o.....	2	pt 21
11	277 Patterson John, o.....	3	pt 14	1 J	782 Watts Harry, oc.....	1	pt 24
				1 J	782 Watts Harry, oc.....	1	pt 24
1 J	180 Rennie John, o.....	3	pt 21	11 J	279 Wallock Thos, o.....	3	pt 13
1 J	187 Riddle Robert, o.....	2	pt 26	1	392 Walker Wm, sr, o.....	2	pt 24
1 J	193 Rudd Chas, o.....	3	pt 16	1 J	393 Walker Wm, jr, f s.....	2	pt 24
				1 J	378 Wigglesworth W, oc.....	1	pt 22
				11 J	278 Waldoock Wm, o.....	5	pt 13

FOURTH WARD—POLLING DIVISION NO. 9.

PART SECOND.

Persons entitled to vote at Municipal Elections only.

None.

FOURTH WARD—POLLING DIVISION NO. 9.

PART THIRD.

Persons entitled to vote at Elections to the Legislative Assembly only.

None.

I, H
 hereby certi
 persons app
 Elections fo
 the said ye
 said Munic
 errors are p
 Dat

17
25
17
17
24
26
19

33
33
35
24
11
25
23

36
21
36
21
25
28
32
t 1
t 21
t 24
t 13
t 24
t 22
t 13

I, HENRY ANDERSON, Clerk of the Municipality of Westminster, in the County of Middlesex, do hereby certify that parts one and three of the above List constitute a correct list for the year 1879, of all persons appearing by the last revised Assessment Roll of the said Municipality to be entitled to vote at Elections for Members of the Legislative Assembly, and that parts one and two constitute a correct list for the said year, of all persons appearing by the said Roll to be entitled to vote at Municipal Elections in said Municipality. And I hereby call upon all electors to examine said list, and if any omissions or other errors are perceived therein to take immediate proceedings to have the said errors corrected according to law.

Dated this 22nd day of July, 1879.

HENRY ANDERSON,
CLERK OF WESTMINSTER,
Wilton Grove, P. O.

