

**CIHM
Microfiche
Series
(Monographs)**

**ICMH
Collection de
microfiches
(monographies)**



Canadian Institute for Historical Microreproductions / Institut canadien de microreproductions historiques

© 1994

Technical and Bibliographic Notes / Notes techniques et bibliographiques

The Institute has attempted to obtain the best original copy available for filming. Features of this copy which may be bibliographically unique, which may alter any of the images in the reproduction, or which may significantly change the usual method of filming, are checked below.

L'Institut a microfilmé le meilleur exemplaire qu'il lui a été possible de se procurer. Les détails de cet exemplaire qui sont peut-être uniques du point de vue bibliographique, qui peuvent modifier une image reproduite, ou qui peuvent exiger une modification dans la méthode normale de filmage sont indiqués ci-dessous.

- | | |
|--|--|
| <input checked="" type="checkbox"/> Coloured covers/
Couverture de couleur | <input checked="" type="checkbox"/> Coloured pages/
Pages de couleur |
| <input type="checkbox"/> Covers damaged/
Couverture endommagée | <input type="checkbox"/> Pages damaged/
Pages endommagées |
| <input type="checkbox"/> Covers restored and/or laminated/
Couverture restaurée et/ou pelliculée | <input type="checkbox"/> Pages restored and/or laminated/
Pages restaurées et/ou pelliculées |
| <input type="checkbox"/> Cover title missing/
Le titre de couverture manque | <input checked="" type="checkbox"/> Pages discoloured, stained or foxed/
Pages décolorées, tachetées ou piquées |
| <input type="checkbox"/> Coloured maps/
Cartes géographiques en couleur | <input checked="" type="checkbox"/> Pages detached/
Pages détachées |
| <input checked="" type="checkbox"/> Coloured ink (i.e. other than blue or black)/
Encre de couleur (i.e. autre que bleue ou noire) | <input checked="" type="checkbox"/> Showthrough/
Transparence |
| <input checked="" type="checkbox"/> Coloured plates and/or illustrations/
Planches et/ou illustrations en couleur | <input type="checkbox"/> Quality of print varies/
Qualité inégale de l'impression |
| <input type="checkbox"/> Bound with other material/
Relié avec d'autres documents | <input type="checkbox"/> Continuous pagination/
Pagination continue |
| <input type="checkbox"/> Tight binding may cause shadows or distortion
along interior margin/
La reliure serrée peut causer de l'ombre ou de la
distorsion le long de la marge intérieure | <input type="checkbox"/> Includes index(es)/
Comprend un (des) index |
| <input type="checkbox"/> Blank leaves added during restoration may appear
within the text. Whenever possible, these have
been omitted from filming/
Il se peut que certaines pages blanches ajoutées
lors d'une restauration apparaissent dans le texte,
mais, lorsque cela était possible, ces pages n'ont
pas été filmées. | Title on header taken from: /
Le titre de l'en-tête provient: |
| <input type="checkbox"/> Additional comments: /
Commentaires supplémentaires: | <input type="checkbox"/> Title page of issue/
Page de titre de la livraison |
| | <input type="checkbox"/> Caption of issue/
Titre de départ de la livraison |
| | <input type="checkbox"/> Masthead/
Générique (périodiques) de la livraison |

This item is filmed at the reduction ratio checked below/
Ce document est filmé au taux de réduction indiqué ci-dessous.

10X	12X	14X	16X	18X	20X	22X	24X	26X	28X	30X	32X
				/							

The copy filmed here has been reproduced thanks to the generosity of:

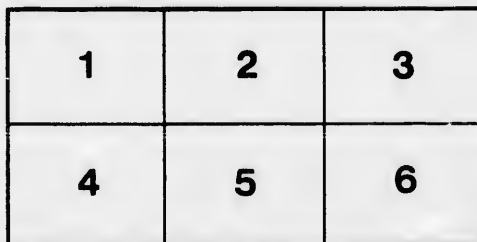
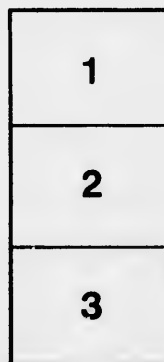
Hamilton Public Library

The images appearing here are the best quality possible considering the condition and legibility of the original copy and in keeping with the filming contract specifications.

Original copies in printed paper covers are filmed beginning with the front cover and ending on the last page with a printed or illustrated impression, or the back cover when appropriate. All other original copies are filmed beginning on the first page with a printed or illustrated impression, and ending on the last page with a printed or illustrated impression.

The last recorded frame on each microfiche shall contain the symbol \rightarrow (meaning "CONTINUED"), or the symbol ∇ (meaning "END"), whichever applies.

Maps, plates, charts, etc., may be filmed at different reduction ratios. Those too large to be entirely included in one exposure are filmed beginning in the upper left hand corner, left to right and top to bottom, as many frames as required. The following diagrams illustrate the method:



L'exemplaire filmé fut reproduit grâce à la générosité de:

Hamilton Public Library

Les images suivantes ont été reproduites avec le plus grand soin, compte tenu de la condition et de la netteté de l'exemplaire filmé, et en conformité avec les conditions du contrat de filmage.

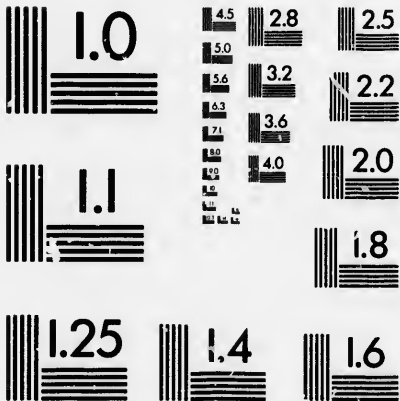
Les exemplaires originaux dont la couverture en papier est imprimée sont filmés en commençant par le premier plat et en terminant soit par la dernière page qui comporte une empreinte d'impression ou d'illustration, soit par le second plat, selon le cas. Tous les autres exemplaires originaux sont filmés en commençant par la première page qui comporte une empreinte d'impression ou d'illustration et en terminant par la dernière page qui comporte une telle empreinte.

Un des symboles suivants apparaîtra sur la dernière image de chaque microfiche, selon le cas: le symbole \rightarrow signifie "A SUIVRE", le symbole ∇ signifie "FIN".

Les cartes, planches, tableaux, etc., peuvent être filmés à des taux de réduction différents. Lorsque le document est trop grand pour être reproduit en un seul cliché, il est filmé à partir de l'angle supérieur gauche, de gauche à droite, et de haut en bas, en prenant le nombre d'images nécessaire. Les diagrammes suivants illustrent la méthode.

MICROCOPY RESOLUTION TEST CHART

(ANSI and ISO TEST CHART No. 2)



APPLIED IMAGE Inc

1653 East Main Street
Rochester, New York 14609 USA
(716) 482 - 0300 - Phone
(716) 288 - 5989 - Fax

Art Committee.

MRS. JOHN CALDER, Convener.

MRS. ROBERT EVANS.

MRS. JOHN STEWART.

MRS. JOHN KNOX.

MRS. THOS. BEASLEY.

MRS. S. JOHN IRELAND.

MISS BEEMER.

MISS GALBREAITH.

HAMILTON PUBLIC LIBRARY



exp. 1. SEP 2 1952



HAMILTON ART EXPOSITION.

Catalogue · Picture · Gallery.

OIL PAINTINGS.

- 1.—“Moses,” *by Guiseppo Lucci.*
- 2.—“Japanese,” *artist unknown.*
—loaned by Hon. W. E. Sanford.
- 3.—“Ben Venue,” *by Mr. J. R. Seavey.*
—loaned by Mr. H. D. Cameron.
- 4.—“Dentist,” *by Gerard Douw, painted 1672.*
- 5.—“Doctor,” *by Gerard Douw.*
—loaned by Mr. J. H. Davis.
- 6.—“Split Rock, Bay of Fundy,” *by Krieghoff.*
- 7.—“Mater Amabilis,” *artist unknown.*
- 8.—“Irish Peasant,” *by Topham.*
—loaned by Mr. Adam Brown.

- 9.—“Breton Girl,” *by Frank C. Penfold.*
—loaned by Mr. N. F. Waddell.
- 10.—“Marine View,” *artist unknown.*
- 11.—“Marine View,” *artist unknown.*
—loaned by Mr. John Knox.
- 12.—“London Bridge,” *by C. J. Lauder,* Glasgow.
- 13.—“New Kilpatrick Church,” *by C. J. Lauder.*
- 14.—“Arran from Bute Shore,” *by T. Milligan,* Glasgow.
—loaned by Mr. McKechnie, Dundas.
- 15.—“Old House at Ancaster,” *by T. M. Martin.*
—loaned by T. M. Martin.
- 16.—“Portrait, Captain J. P. Cockburn,” *by Ojice, 1807.*
- 17.—“‘The Hythe’ (East-Indiamen, Capt. J. P. Cockburn) Entering the China River,” *by Higgins, marine painter to George IV., 1822.*
—loaned by Mr. Cockburn.
- 18.—“The Old Mill by Moonlight,” *by G. W. Johnson.*
—loaned by G. W. Johnson.
- 19.—“Farm Yard,” *by Herring.*
- 20.—“Cattle Drinking,” *by Herring.*
- 21.—Landscape, *by Raphael.*
—loaned by Mr. George Roach.

- 22.—“Hay-Making,” *by Raphael*.
—loaned by Mr. George Roach.
- 23.—“Æsop narrating his Fables,” *by Arch. Simpson*.
—loaned by artist.
- 24.—“Portrait of Lord Nelson,” *artist unknown*.
—loaned by W. A. Edwards.
- 25.—“Danville Coach,” *by A. Melrose*.
- 26.—“Donkey’s Head,” (said to be), *by George Morland*.
- 27.—“Saddle Horse.”
- 28.—“Hunting Scene,” *by Alkins*.
- 29.—“Hunting Scene,” *by Alkins*.
- 30.—“Hunting Scene,” *by Alkins*.
- 31.—“Horse’s Head,” *by Stull, of New York*.
- 32.—“Horse’s Head,” *by Stull, of New York*.
- 33.—“Horse’s Head,” *by Stull, of New York*.
- 34.—“Horse’s Head,” *by Stull, of New York*.
—loaned by Mr. William Hendrie.
- 35.—“View in Ram Alley,” Dorking, Surrey, *by P. Nasmyth*.
- 36.—“English Landscape,” *by P. Nasmyth*.
- 37.—“Chedoke Falls,” *by MacEvoy*.
—loaned by E. A. Colquhoun.

- 38.—“ Art Loan,” *by Judson.*
—loaned by Mrs. B. E. Charlton.
- 39.—“ Holy Family,” *by Parmagiano.*
- 40.—“ Mary washing the Saviour’s feet,” *by Carter.*
- 41.—“ Widow’s Mite,” *by Dessure.*
- 42.—“ David Meeting Abigail,” *by Rubens.*
- 43.—“ Dartmoor,” *by Pike.*
- 44.—“ Clovelly,”
- 45.—“ Waters Meet,” *by Pike.*
- 46.—Two Landscapes, *by Thors.*
- 47.—“ The Fisherman’s Harvest,” *by Pike.*
—loaned by Mr. W. J. Copp.
- 48.—“ Peaches,” *by J. C. Forbes.*
—loaned by artist.
- 49.—“ On Furlough,” *by F. Deffreger.*
- 50.—“ Saint Cecilia,” *by Gabriel Max.*
- 51.—“ Ostend at Night,” *by Fernlee.*
- 52.—“ A Good Glass of Wine,” *by Edward Grutzner.*
—loaned by Mrs. Alexander Cameron, Toronto.
- 53.—Battle Piece, *by Hughtenberg, 1646.*
- 54.—Battle Piece, *1743.*
- 55.—“ Elevation of the Host,” *by F. Geddo.*
—loaned by Mr. Lucas.

- 56.—“Reading the News,” by *J. B. McDonald, R.S.A.*
- 57.—“Terrace of Haddon Hall,” by *A. L. Vernon.*
- 58.—“Head of the Glen,” by *A. K. Brown.*
- 59.—“Junction of the Duchray and Forth,” by *A. K. Brown.*
- 60.—“Holy Loch,” by *J. Chalmers.*
- 61.—“Peat-Digging at Lochaber,” by *Jas. Docharty, A. R. S. A.*
- 62.—“Holy Loch,” by *Jas. Docharty, A.R.S.A.*
- 63.—“When Eyes Grow Dim,” by *Tom McEwan.*
- 64.—“A Scottish Interior,” by *Tom McEwan.*
- 65.—“Blackman Street,” by *Atkinson Grimshaw.*
—loaned by Mr. M. Leggat.
- 66.—“Gipsy Camp,” by *Sir David Wilkie.*
—loaned by Mr. Walker.
- 67.—Landscape, by *W. Blair Bruce.*
—loaned by Miss Galbreath.
- 68.—“Hope.”
- 69.—“Lucretia,”
- 70.—“La Poesie,”
- 71.—“Madonna della Siedia,”
—loaned by Hon. G. W. Ross,
Normal School, Toronto

- 72.—“The Reading Magdalen.”
- 73.—“Beatrice Cenci, the night before Execution,”
- 74.—“Descent from the Cross,”
- 75.—“The Rape of the Sabines,” *artist unknown.*
—loaned by Hon. G. W. Ross,
Normal School, Toronto.
- 76.—Landscape, *by S. J. Ireland.*
—loaned by J. G. Buchanan.
- 77.—“Early Morning,” *by Homer Watson.*
- 78.—“Evening,” *by Homer Watson.*
—loaned by Mr. John Riddell.
- 79.—“Normandy Cattle,” *by W. H. Howe.*
—loaned by Mr. R. Thomson.
- 80.—“Scene in Norway,” *artist unknown.*
- 81.—“Scene in Norway,” “
- 82.—“Stirrup Cup,” *by Gourlay Steele.*
—loaned by Mrs. Charles Hope.
- 83.—“Last Rays,” (low-tide Bay of Fundy), *by F. M. Bell-Smith.*
- 84.—“Art Students,” *by F. M. Bell-Smith.*
- 85.—“Ross Peak, (British Columbia),” *by F. M. Bell-Smith.*
—loaned by F. M. Bell-Smith.

- 86.—“Love bribed by Avarice,” (after Angelica Kaufman, on porcelain), *by Ludwig Sturm.*
- 87.—“Three Wood Nymphs,” (after Angelica Kaufman, on porcelain), *by Ludwig Sturm.*
—loaned by Mr. M. Leggat.
- 88.—“The Good Samaritan,” (after Rubens.)
- 89.—“The Journey to Emmæus,” *by Paul Brill, 1718.*
—loaned by Mrs. J. Calder.
- 90.—“David with the Head of Goliath,” *by Gueraino, 1590.*
- 91.—“Yosemite Valley,” *by Keith.*
—loaned by Mr. J. K. Kerr, Toronto.
- 92.—“Loch Achray,” *by Docharty, R.A.*
- 93.—“Falls of the Dochart,” “ “
- 94.—“River Lochy,” “ “
- 95.—“Trossachs,” “ “
- 96.—“Harvest Field,” (Loch Lomond), “ “
- 97.—“Braemar Forest,” “ “
- 98.—“Peat-Moss in Wales,” *by Williams.*
- 99.—“Glen in North Wales,” *by Richard.*
- 100.—“Source of the Dee,” *by Docharty, R.A.*
- 101.—“Glen Dee,” “ “
—loaned by a gentleman of Hamilton.

on,”

n.

nto.

F. M.

Bell-

- 102.—“Above Kenmore,” *by Docharty, R.A.*
- 103.—“Highland Farm,” “ ”
- 104.—“Glen Orchy,” “ ”
- 105.—“Bringing home Peat” (in Skye), “ ”
- 106.—“Glen Etive,” “ ”
- 107.—“Glen Sannox,” “ ”
- 108.—“Leisure,” “ ”
- 109.—“Clyde in Summer,” “ ”
- 110.—“On the Thames, near Goring,” “ ”
- 111.—“Goatfell,” “ ”
- 112.—“Landscape,” “ ”
- 113.—“Ardenadum Burn, Holy Loch,” *by Docharty, R.A.*
—loaned by a gentleman of Hamilton. *Kieffer.*
- 114.—“A Flemish Head,” *by Miss Sidney Tully.*
- 115.—A Study, *by Miss Sidney Tully.*
—loaned by the artist.
- 116.—“Italian Dancing Girls,” *by Lucci.*
—loaned by Mrs. Æmilius Jarvis.
- 117.—“Peonies,” *by J. R. Seavey.*
—loaned by the artist.
- 118.—“Summer Evening,” *by E. S. Calvert.*
- 119.—“Cool October,” “ ”
—loaned by Roberts & Son, Toronto.

- 120.—“Dampiere in Normandy,” by *T. M. Barnsley*.
 121.—“The Thames below Greenwich,” “
 —loaned by Roberts & Son, Toronto.

WATER COLORS.

- 1.—“English Pastoral Scene,” by *Carlisle*.
 2.—“Scene on the Upper Ottawa,” by *O'Brien*.
 3.—“Sea Gull Falls,” by *Cresswell*.
 —loaned by Mr. Cloke.
 4.—“Beaube, on Mediterranean,” by *Surgay*.
 5.—“Maratines, (Alps),” “
 6.—“Coast of Swanage, I. W.,” “
 7.—“Lake of Geneva,” “
 8.—“Landscape, near Reigate,” “
 9.—“Laborer’s Cottage,” by *Ester*.
 10.—“Nearing Home,” “
 11.—“River Scene,” *artist unknown*.
 12.—“Coast, I. W.,” by *Surgay*.
 13.—“Little Falls, near Castle, Chillon,” *artist unknown*.
 —loaned by Mr. W. J. Copp.
 14.—“Roman Girl,” by *Bompiani*.
 —loaned by Mr. Æ. Jarvis.

- 15.—“Breton Fish-Wife,” *by W. Lucas.*
- 16.—“Breton Fisherman,” *by W. Lucas.*
- 17.—English Landscape, *by Albert Bowers.*
- 18.—English Landscape, *by Albert Bowers.*
—loaned by Mr. F. Malloch.
- 19.—English Landscape, “Surrey in Winter,” *by Albert Bowers.*
- 20.—English Landscape, *by Albert Bowers.*
- 21.—English Landscape, *by Albert Bowers.*
- 22.—“Scene near Wimbledon,” *by Richards.*
- 23.—“Scene near Wimbledon,” *by Richards.*
—loaned by Mr. H. Blandford.
- 24.—“Mount Wapta, from the Pipestown River, N.W.T.,”
by M. Matthews, R.C.A.
—loaned by artist.
- 25.—“Loch Cornish,” *by Jas. A. Aithins.*
- 26.—“Sea Shore Sketch,” *by A. Rajou.*
- 27.—“Sea Shore Sketch,” *by A. Rajou.*
- 28.—“On Loch Goil,” *by Thos. Fairbairn.*
- 29.—“Glenfinlas,” *by Tom Donald.*
—loaned by Mr. M. Leggat.
- 30.—“Swashbuckler,” *by Brithenstein.*
—loaned by Mr. Hendrie.

31.-

32.-

33.-

34.-

35.-

36.-

37.-

38.-

39.-

40.-

41.-

42.-

43.-

44.-

45.-

46.-

47.-

- 31.—“Forest Road in Muskoka,” by *T. M. Martin*.
- 32.—“Afternoon in the Meadows,” by *T. M. Martin*.
- 33.—“McKay’s Mountain,” by *Cresswell*.
- 34.—“Kaministiquia River,” by *Cresswell*.
- 35.—“Thunder Bay,” by *Cresswell*.
- 36.—“Glen Lonely,” by *L. O’Brien*.
—loaned by Mr. John Riddell.
- 37.—“Sunset in Isle of Arran,” by *Carlisle*.
- 38.—“Cader Idres (Wales),” by *Carlisle*.
- 39.—“The Maddocks,” by *Carlisle*.
- 40.—“Fishing House (Cústan, Maine),” by *Cresswell*.
- 41.—“Group of Sheep,” by *Cresswell*.
—loaned by Mr. J. H. Park.
- 42.—“Monte Carlo,” by *W. Gray*.
- 43.—“Monaca,” by *W. Gray*.
—loaned by Mr. R. Thomson.
- 44.—“Mount Carrol, (Rogers’ Pass, B. C.),” by *F. M. Bell-Smith*.
- 45.—“Cascade near Great Glacier (Selkirks, B. C.),” by *F. M. Bell-Smith*.
- 46.—“Track of an Avalanche,” by *F. M. Bell-Smith*.
- 47.—“A Valley in the Selkirks,” by *F. M. Bell-Smith*.
—loaned by Mr. F. M. Bell-Smith.

Albert

V.T.,”

- 48.—“Meeting of Two Streams (Selkirks),” by *F. M. Bell-Smith*.
- 49.—“English Bay (British Columbia),” by *F. M. Bell-Smith*.
—loaned by Mr. F. M. Bell-Smith.
- 50.—“Cree Valley (County Wicklow, Ireland),” artist
unknown.
- 51.—“Eel Point,” by *Cresswell*.
- 52.—“On the Upper Ottawa,” by *O'Brien*.
—loaned by Mr. R. Thomson.

PASTEL.

- 1.—“Portrait of Captain Lestock Cockburn.” by *Russel*,
date 1794.
- 2.—“Portrait of Mrs. Cockburn,” by *Russel*, *date 1794*.
—loaned by Mr. Cockburn.
- 3.—“Portrait of a Young Lady,” (colored crayon), by
Arch. Simpson.
—loaned by artist.

1.—

2.—

3.—

4.—

5.—

6.—

7.—

8.—

9.—

10.—

11.—

12.—

13.—

ENGRAVINGS.

- 1.—“Mali's Sacrifice,” *by W. H. Simmons.*
- 2.—“The Maid of Saragossa,” *by Samuel Cousins.*
—loaned by Mr. George Roach.
- 3.—“Crayon,” *by Hythe.*
- 4.—“Crayon,” *by Opie.*
—loaned by Mr. Cockburn, Greenville.
- 5.—“Dogs' Heads,” *by E. Pirodos,* (after G. Jadin).
- 6.—“Father Time clipping wings of Cupid,” (after
Vandyck). A very old engraving.
—loaned by Mr. John Stewart.
- 7.—“Light in Darkness,” (after Sir Noel Paton.)
—loaned by Mrs. Miles O'Reilly.
- 8.—“England,” *by Jas. Faed.*
- 9.—“Madeline,” *artist unknown.*
- 10.—“Aurora.” “
—loaned by Mrs. B. E. Charlton.
- 11.—“Leaving Home,” (proof after letters.)
- 12.—“Fra Angelica,” (proof after letters.)
- 13.—“A Highland Loch.”
—loaned by Mrs. J. Stewart.

- 14.—“Christ Healing the Sick Child,” (after Gabriel Max).
- 15.—Sketch, *by Jacobi.*
- 16.—Sketch, *by Jacobi.*
- loaned by Mr. Cloke.



