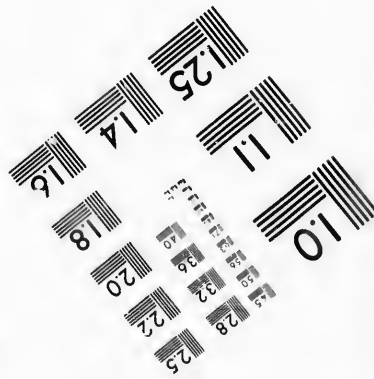
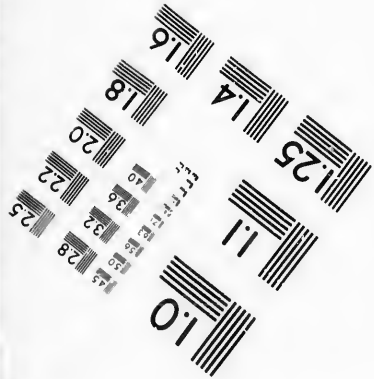
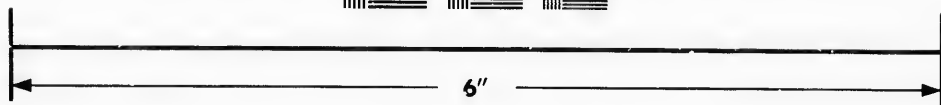
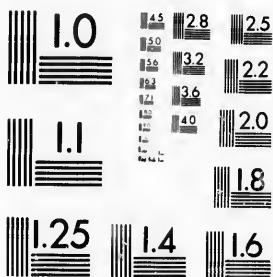


**IMAGE EVALUATION
TEST TARGET (MT-3)**



**Photographic
Sciences
Corporation**

23 WEST MAIN STREET
WERSTER, N.Y. 14580
(716) 872-4503

15
16
18
20
22
25
28
32
36
40

**CIHM/ICMH
Microfiche
Series.**

**CIHM/ICMH
Collection de
microfiches.**



Canadian Institute for Historical Microreproductions / Institut canadien de microreproductions historiques

10
15
20
25
30
35
40

© 1987

Technical and Bibliographic Notes/Notes techniques et bibliographiques

The Institute has attempted to obtain the best original copy available for filming. Features of this copy which may be bibliographically unique, which may alter any of the images in the reproduction, or which may significantly change the usual method of filming, are checked below.

L'Institut a microfilmé le meilleur exemplaire qu'il lui a été possible de se procurer. Les détails de cet exemplaire qui sont peut-être uniques du point de vue bibliographique, qui peuvent modifier une image reproduite, ou qui peuvent exiger une modification dans la méthode normale de filmage sont indiqués ci-dessous.

- | | |
|---|---|
| <input type="checkbox"/> Coloured covers/
Couverture de couleur | <input type="checkbox"/> Coloured pages/
Pages de couleur |
| <input type="checkbox"/> Covers damaged/
Couverture endommagée | <input type="checkbox"/> Pages damaged/
Pages endommagées |
| <input type="checkbox"/> Covers restored and/or laminated/
Couverture restaurée et/ou pelliculée | <input type="checkbox"/> Pages restored and/or laminated/
Pages restaurées et/ou pelliculées |
| <input type="checkbox"/> Cover title missing/
Le titre de couverture manque | <input checked="" type="checkbox"/> Pages discoloured, stained or foxed/
Pages décolorées, tachetées ou piquées |
| <input type="checkbox"/> Coloured maps/
Cartes géographiques en couleur | <input type="checkbox"/> Pages detached/
Pages détachées |
| <input type="checkbox"/> Coloured ink (i.e. other than blue or black)/
Encre de couleur (i.e. autre que bleue ou noire) | <input checked="" type="checkbox"/> Showthrough/
Transparence |
| <input type="checkbox"/> Coloured plates and/or illustrations/
Planches et/ou illustrations en couleur | <input checked="" type="checkbox"/> Quality of print varies/
Qualité inégale de l'impression |
| <input type="checkbox"/> Bound with other material/
Relié avec d'autres documents | <input type="checkbox"/> Includes supplementary material/
Comprend du matériel supplémentaire |
| <input type="checkbox"/> Tight binding may cause shadows or distortion along interior margin/
La reliure serrée peut causer de l'ombre ou de la distorsion le long de la marge intérieure | <input type="checkbox"/> Only edition available/
Seule édition disponible |
| <input type="checkbox"/> Blank leaves added during restoration may appear within the text. Whenever possible, these have been omitted from filming/
Il se peut que certaines pages blanches ajoutées lors d'une restauration apparaissent dans le texte, mais, lorsque cela était possible, ces pages n'ont pas été filmées. | <input type="checkbox"/> Pages wholly or partially obscured by errata slips, tissues, etc., have been refilmed to ensure the best possible image/
Les pages totalement ou partiellement obscurcies par un feuillet d'errata, une pelure, etc., ont été filmées à nouveau de façon à obtenir la meilleure image possible. |
| <input checked="" type="checkbox"/> Additional comments:/
Commentaires supplémentaires: | [Printed ephemera] 1 sheet (verso blank) |

This item is filmed at the reduction ratio checked below/
Ce document est filmé au taux de réduction indiqué ci-dessous.

10X	12X	14X	16X	18X	20X	22X	24X	26X	28X	30X	32X
											<input checked="" type="checkbox"/>

The copy filmed here has been reproduced thanks to the generosity of:

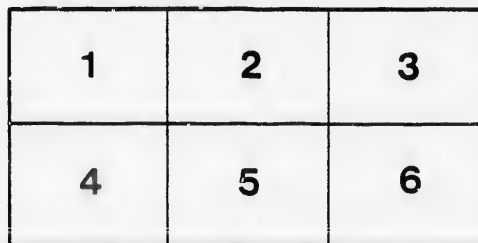
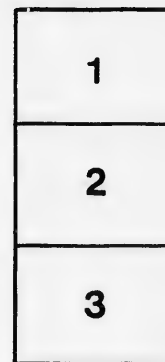
New Brunswick Museum
Saint John

The images appearing here are the best quality possible considering the condition and legibility of the original copy and in keeping with the filming contract specifications.

Original copies in printed paper covers are filmed beginning with the front cover and ending on the last page with a printed or illustrated impression, or the back cover when appropriate. All other original copies are filmed beginning on the first page with a printed or illustrated impression, and ending on the last page with a printed or illustrated impression.

The last recorded frame on each microfiche shall contain the symbol \rightarrow (meaning "CONTINUED"), or the symbol ∇ (meaning "END"), whichever applies.

Maps, plates, charts, etc., may be filmed at different reduction ratios. Those too large to be entirely included in one exposure are filmed beginning in the upper left hand corner, left to right and top to bottom, as many frames as required. The following diagrams illustrate the method:



L'exemplaire filmé fut reproduit grâce à la générosité de:

New Brunswick Museum
Saint John

Les images suivantes ont été reproduites avec le plus grand soin, compte tenu de la condition et de la netteté de l'exemplaire filmé, et en conformité avec les conditions du contrat de filmage.

Les exemplaires originaux dont la couverture en papier est imprimée sont filmés en commençant par le premier plat et en terminant soit par la dernière page qui comporte une empreinte d'impression ou d'illustration, soit par le second plat, selon le cas. Tous les autres exemplaires originaux sont filmés en commençant par la première page qui comporte une empreinte d'impression ou d'illustration et en terminant par la dernière page qui comporte une telle empreinte.

Un des symboles suivants apparaîtra sur la dernière image de chaque microfiche, selon le cas: le symbole \rightarrow signifie "A SUIVRE", le symbole ∇ signifie "FIN".

Les cartes, planches, tableaux, etc., peuvent être filmés à des taux de réduction différents. Lorsque le document est trop grand pour être reproduit en un seul cliché, il est filmé à partir de l'angle supérieur gauche, de gauche à droite, et de haut en bas, en prenant le nombre d'images nécessaire. Les diagrammes suivants illustrent la méthode.

THEATRE.

St. John Dramatic Lyceum
SOUTH SIDE KING SQUARE.

MANAGER & PROPRIETOR, -- J. W. LANERGAN.
Assistant Manager, J. H. Ercwne. | Leader of the Orchestra, W. Mullaly.
Business Agent, H. B. Hubbard.

A GREAT BILL FOR SATURDAY NIGHT.

Two Splendid Pieces.

First time in five years of the thrilling and wonder-exciting Drama, the

CHAMBER OF DEATH

Or, La Tour De Nesle!

With a very strong cast.

First time here of the very funny Farce called an

OBJECT OF INTEREST

Go and see this Superior Bill of Attraction.

SATURDAY EVENING, JUNE 29, 1867.

Will be played the great Drama, replete with effects, Tableaux, &c., &c., called the

Chamber of Death!

OR, LA TOUR DE NESLE!

CAPT. BURIDAN, an adventurer,	MR. FRANK ROCHE
GAULTIER D'AULNEY, } Twin Brothers }	" SHIRLEY FRANCE
PHILIP D'AULNEY, }	" H. L. BASCOMB
ENGUERRAND DE MORGU, Y, Prime Minister of France,	" J. B. FULLER
COUNT SAVOISEY, } Nobles of France, }	" T. C. HOWARD
SIFUR ROUAL, }	" T. H. BURNS
ORSINI, } Ruffians. }	" D. R. ALLEN
LANDRI, }	" FRANK HARDENBERG
CAPTAIN OF THE GUARD,	" J. SCOTT
RICHARD,	" E. J. MACK
PAGE,	MISS ROBERTS
MARGUERITE,	MRS. D. R. ALLEN
VIOLETTA,	MRS. J. H. BROWNE

Incidents of the Drama.

ACT 1st.—Orsini's Tavern; the Labourers; I have but one sword, but it has a point; sudden and timely appearance of Captain Buridan; Back! Back! Philip's story, his strange appointment; the veiled women; the coincidence; they must be two sisters; arrival of Gaultier; the twin orphans; we were together exposed upon the steps of Notre Dame; how an assignation, and so on; why come to Paris? beware! the Curlew; we are waited for; and we, what waits for us? The Chamber of Death, La Tour de Nesle; Marguerite and her victims; the scratch; Sir, you have wounded me; I shall know you when we meet again; Philip and Buridan; 'Tis not I fear, but fight alone can save us now; Brother, adieu, either for life or death; can you swim? 'Tis not behind thy face; Marguerite of Burgundy, Queen of France and Navarre; TABLEAU.

ACT 2nd.—Palace of Queen Marguerite; Gaultier and his love; Where is your brother? Also I know not, my fears for him are beyond expression, again this morning the river has thrown up another corpse; the discovery; the fortune; not have but three days to live; the talisman; the discovery; Gaultier's agony and despair; justice; my brother's murdered; fool, stand aside; the tavern of Orsini; Buridan and the Queen; you are not an Egyptian, who are you? Buridan the Captain; The same tower up but two last night, and the third; now stand before you! the late words traced in blood, I die assinated by Marguerite of Burgundy; the order to arrest Morgu; we meet again tomorrow.

The plot thickens; Gaultier and the Queen; Marguerite obtains the scroll of blood; order to arrest the captain; now Buridan look to thyself; execution of the minister; Buridan in prison; unloose my chains; Marguerite despair of the Queen; 'tis no rose I am first minister. EXCIT'NG TABLEAU.

ACT 3rd.—Gaultier and the Queen, Marguerite of Burgundy, remember your promise; thy lover's tomb shall be La Tour De Nesle; Gaultier and Buridan; Landri's story, a sword and follow me. The Chamber of Death. Terrible assassination of Gaultier; wretched youth; I am thy mother, Buridan, you would not kill me, mercy; death of Marguerite and Buridan; I am revenged, ha! ha! STARTLING TABLEAU.

The performance to conclude with the new Farce called an

OBJECT OF INTEREST!

MR. SIMMERTON,	MR. H. L. BASCOMB.
MAJOR CULVERIN,	" T. C. HOWARD.
MR. PRIMROSE,	" J. B. FULLER
BARNEY O'DWYER,	" FRANK HARDENBERG
MRS. VERNON,	MISS CLEUR.
MRS. J. CULVERIN,	MISS EFFIE WARREN.
FANNY GRIBBLES,	RACHEL NOAH

A good Bill in preparation for the NATAL DAY OF THE NEW DOMINION!

Prices of Admission.

DRESS CIRCLE ORCHESTRA STALLS, 50 cts. | PARQUETTE, 25 cts.
Reserved Seats in the Dress Circle and Stall 50 cents Extra.
Which can be secured at the Office of the Lyceum during the day of each performance, from 11½ A.M. to 1½ P.M.
RESERVED SEATS—Reserved until the beginning of the second act only.
Tickets for sale during the day at Chubb & Co.'s Stationery Store, Prince Wm. Street, and at the Hotels.

The two back seats of the Dress Circle are set apart for the exclusive use of Colored People.

Doors open at 7½; Curtains to rise at 8.

