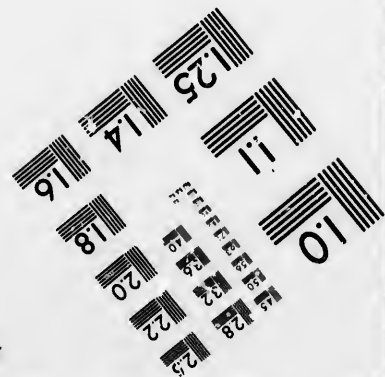
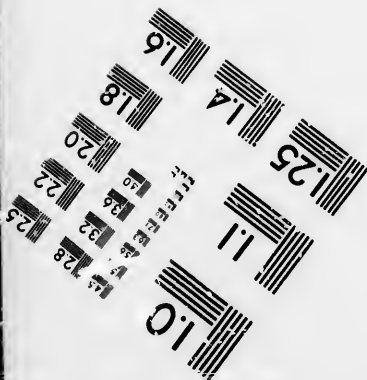
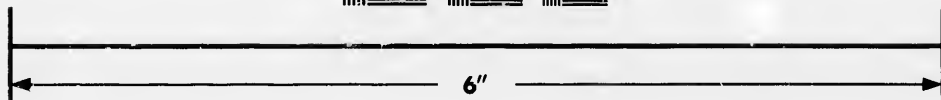
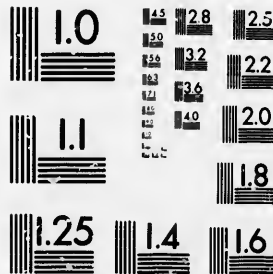


**IMAGE EVALUATION
TEST TARGET (MT-3)**



**Photographic
Sciences
Corporation**

23 WEST MAIN STREET
WEBSTER, N.Y. 14580
(716) 672-4503

1.5 1.8 2.0 2.2 2.5
2.8 3.2 3.6 4.0

**CIHM/ICMH
Microfiche
Series.**

**CIHM/ICMH
Collection de
microfiches.**



Canadian Institute for Historical Microreproductions / Institut canadien de microreproductions historiques

1.0 1.5 2.0 2.5
3.0 3.5 4.0

© 1986

Technical and Bibliographic Notes/Notes techniques et bibliographiques

The Institute has attempted to obtain the best original copy available for filming. Features of this copy which may be bibliographically unique, which may alter any of the images in the reproduction, or which may significantly change the usual method of filming, are checked below.

L'Institut a microfilmé le meilleur exemplaire qu'il lui a été possible de se procurer. Les détails de cet exemplaire qui sont peut-être uniques du point de vue bibliographique, qui peuvent modifier une image reproduite, ou qui peuvent exiger une modification dans la méthode normale de filmage sont indiqués ci-dessous.

- | | |
|--|--|
| <input type="checkbox"/> Coloured covers/
Couverture de couleur | <input type="checkbox"/> Coloured pages/
Pages de couleur |
| <input type="checkbox"/> Covers damaged/
Couverture endommagée | <input type="checkbox"/> Pages damaged/
Pages endommagées |
| <input type="checkbox"/> Covers restored and/or laminated/
Couverture restaurée et/ou pelliculée | <input type="checkbox"/> Pages restored and/or laminated/
Pages restaurées et/ou pelliculées |
| <input type="checkbox"/> Cover title missing/
Le titre de couverture manque | <input checked="" type="checkbox"/> Pages discoloured, stained or foxed/
Pages décolorées, tachetées ou piquées |
| <input type="checkbox"/> Coloured maps/
Cartes géographiques en couleur | <input type="checkbox"/> Pages detached/
Pages détachées |
| <input type="checkbox"/> Coloured ink (i.e. other than blue or black)/
Encre de couleur (i.e. autre que bleue ou noire) | <input checked="" type="checkbox"/> Showthrough/
Transparence |
| <input type="checkbox"/> Coloured plates and/or illustrations/
Planches et/ou illustrations en couleur | <input type="checkbox"/> Quality of print varies/
Qualité inégale de l'impression |
| <input type="checkbox"/> Bound with other material/
Relié avec d'autres documents | <input type="checkbox"/> Includes supplementary material/
Comprend du matériel supplémentaire |
| <input type="checkbox"/> Tight binding may cause shadows or distortion
along interior margin/
La reliure serrée peut causer de l'ombre ou de la
distortion le long de la marge intérieure | <input type="checkbox"/> Only edition available/
Seule édition disponible |
| <input type="checkbox"/> Blank leaves added during restoration may
appear within the text. Whenever possible, these
have been omitted from filming/
Il se peut que certaines pages blanches ajoutées
lors d'une restauration apparaissent dans le texte,
mais, lorsque cela était possible, ces pages n'ont
pas été filmées. | <input type="checkbox"/> Pages wholly or partially obscured by errata
slips, tissues, etc., have been refilmed to
ensure the best possible image/
Les pages totalement ou partiellement
obscurcies par un feuillet d'errata, une pelure,
etc., ont été filmées à nouveau de façon à
obtenir la meilleure image possible. |
| <input checked="" type="checkbox"/> Additional comments:
Commentaires supplémentaires: | |

(PRINTED EPHEMERA) 4 p.

This item is filmed at the reduction ratio checked below/
Ce document est filmé au taux de réduction indiqué ci-dessous.

10X	14X	18X	22X	26X	30X
<input type="checkbox"/>	<input type="checkbox"/>	<input type="checkbox"/>	<input checked="" type="checkbox"/>	<input type="checkbox"/>	<input type="checkbox"/>
12X	16X	20X	24X	28X	32X

The copy filmed here has been reproduced thanks to the generosity of:

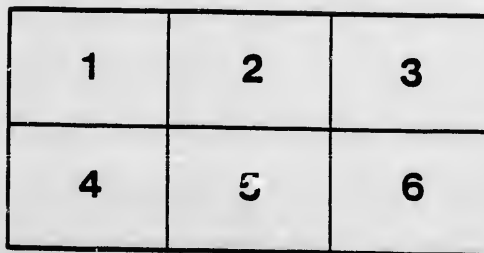
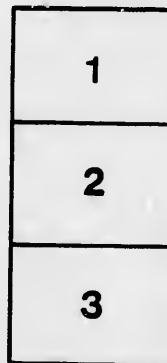
Archives of Ontario
Toronto

The images appearing here are the best quality possible considering the condition and legibility of the original copy and in keeping with the filming contract specifications.

Original copies in printed paper covers are filmed beginning with the front cover and ending on the last page with a printed or illustrated impression, or the back cover when appropriate. All other original copies are filmed beginning on the first page with a printed or illustrated impression, and ending on the last page with a printed or illustrated impression.

The last recorded frame on each microfiche shall contain the symbol \rightarrow (meaning "CONTINUED"), or the symbol ∇ (meaning "END"), whichever applies.

Maps, plates, charts, etc., may be filmed at different reduction ratios. Those too large to be entirely included in one exposure are filmed beginning in the upper left hand corner, left to right and top to bottom, as many frames as required. The following diagrams illustrate the method:



L'exemplaire filmé fut reproduit grâce à la générosité de:

Archives of Ontario
Toronto

Les images suivantes ont été reproduites avec le plus grand soin, compte tenu de la condition et de la netteté de l'exemplaire filmé, et en conformité avec les conditions du contrat de filmage.

Les exemplaires originaux dont la couverture en papier est imprimée sont filmés en commençant par le premier plat et en terminant soit par la dernière page qui comporte une empreinte d'impression ou d'illustration, soit par le second plat, selon le cas. Tous les autres exemplaires originaux sont filmés en commençant par la première page qui comporte une empreinte d'impression ou d'illustration et en terminant par la dernière page qui comporte une telle empreinte.

Un des symboles suivants apparaîtra sur la dernière image de chaque microfiche, selon le cas: le symbole \rightarrow signifie "A SUIVRE", le symbole ∇ signifie "FIN".

Les cartes, planches, tableaux, etc., peuvent être filmés à des taux de réduction différents. Lorsque le document est trop grand pour être reproduit en un seul cliché, il est filmé à partir de l'angle supérieur gauche, de gauche à droite, et de haut en bas, en prenant le nombre d'images nécessaire. Les diagrammes suivants illustrent la méthode.

1836

1 19

SYLLABUS
OF
LECTURES,
ON THE LIFE OF CHRIST:
TO BE DELIVERED WEEKLY,
At Saint James's Church, Toronto,
DURING LENT.
DIVINE SERVICE TO COMMENCE EACH WEDNESDAY,
AT ELEVEN O'CLOCK, A.M.

R. STANTON, PRINTER.

Lent Lectures.

LECTURE 1ST.—FEBRUARY 24TH, 1836.

RETROSPECT of events preceding the incarnation of our Lord. His nativity and childhood. Disputes at twelve years of age with the Doctors in the Temple. Prepares for entering his Ministry—1st, by Baptism, at which St. John gives testimony of his Divinity; 2nd, by fasting; 3d, by suffering temptation. First miracle at Cana. Goes to Capernaum. Keeps the first Passover. His proceedings while at Jerusalem. Confers with Nicodemus. Performs many wonderful works. Observations on Christ's example.

LECTURE 2ND.—MARCH 2ND.

Our Lord travels to Judea. His interview with the woman of Samaria. Preaches the Gospel in Galilee. Sermon on the Mount. Choses twelve Disciples. Gives them a Commission and instructions. St. John the Baptist's message. Goes up to the second Passover. Vindicates the conduct of his Disciples on the Sabbath, and on the Sabbath cures the withered hand. The Scribes and Pharisees require a sign. Delivers many Parables. Despised at Nazareth. Death and burial of John the Baptist. Our Lord's discourse in the Synagogue at Capernaum. Goes up to the third Passover. Observations on Christ's manner of teaching.

LECTURE 3RD.—MARCH 5TH.

Jesus departs from Jerusalem and Judea. The
 leaven of the Pharisees and Sadducees. Transfigu-
 ration on the Mount. Goes up secretly to the Feast of
 Tabernacles. Preaches in the Temple. Rejected
 by the Samaritans. Sends out seventy Disciples with
 instructions. Effects of his preaching. His discourse
 at the Feast of Dedication. Resurrection of Lazarus.
 Christ rides triumphantly into Jerusalem. Remarks
 on his miracles.

LECTURE 4TH.—MARCH 16TH.

Our Lord curses the fig tree. His authority ques-
 tioned. Parables of the two sons, of the Vineyard,
 and wicked Husbandmen. The Marriage Feast.
 The Wedding Garment. The Tribute. Discourse
 on the Last Judgment. Eats the Passover with his
 Disciples. Affecting Discourse. Institutes the Sac-
 rament of the Supper. Suffers in the Garden. Is
 apprehended. Denied by Peter. His prophecies.

LECTURE 5TH.—MARCH 23RD.

Christ examined before the Jewish Council.
 Brought before Pilate, the Roman Governor. Fate
 of Judas. Christ before Herod—Sent back to Pilate
 who tries to deliver him—Is condemned and cruci-
 fied. Prodigies immediately following his death.
 His institutions.

LECTURE 6TH.—MARCH 30TH.

Our Lord's Resurrection. He appears to two Disciples on the way to Emmaus—To ten of the Apostles—To the eleven, particularly Thomas—at the sea of Galilee—on a mountain in Galilee—His last appearance and conversation with the Disciples at Jerusalem. His glorious ascension at Bethany. State of Christianity at the departure of Christ.

