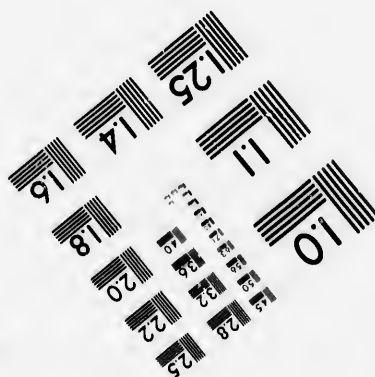
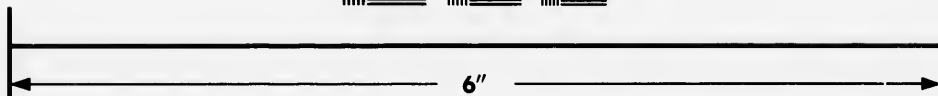
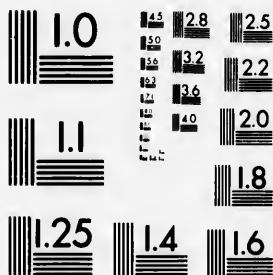


**IMAGE EVALUATION  
TEST TARGET (MT-3)**



**Photographic  
Sciences  
Corporation**

23 WEST MAIN STREET  
WEBSTER, N.Y. 14580  
(716) 872-4503

Can



**CIHM/ICMH  
Microfiche  
Series.**

**CIHM/ICMH  
Collection de  
microfiches.**



Canadian Institute for Historical Microreproductions / Institut canadien de microreproductions historiques



**© 1982**

Technical and Bibliographic Notes/Notes techniques et bibliographiques

The Institute has attempted to obtain the best original copy available for filming. Features of this copy which may be bibliographically unique, which may alter any of the images in the reproduction, or which may significantly change the usual method of filming, are checked below.

L'Institut a microfilmé le meilleur exemplaire qu'il lui a été possible de se procurer. Les détails de cet exemplaire qui sont peut-être uniques du point de vue bibliographique, qui peuvent modifier une image reproduite, ou qui peuvent exiger une modification dans la méthode normale de filmage sont indiqués ci-dessous.

- Coloured covers/  
Couverture de couleur
- Covers damaged/  
Couverture endommagée
- Covers restored and/or laminated/  
Couverture restaurée et/ou pelliculée
- Cover title missing/  
Le titre de couverture manque
- Coloured maps/  
Cartes géographiques en couleur
- Coloured ink (i.e. other than blue or black)/  
Encre de couleur (i.e. autre que bleue ou noire)
- Coloured plates and/or illustrations/  
Planches et/ou illustrations en couleur
- Bound with other material/  
Relié avec d'autres documents
- Tight binding may cause shadows or distortion  
along interior margin/  
La reliure serrée peut causer de l'ombre ou de la  
distortion le long de la marge intérieure
- Blank leaves added during restoration may  
appear within the text. Whenever possible, these  
have been omitted from filming/  
Il se peut que certaines pages blanches ajoutées  
lors d'une restauration apparaissent dans le texte,  
mais, lorsque cela était possible, ces pages n'ont  
pas été filmées.
- Additional comments:/  
Commentaires supplémentaires:

- Coloured pages/  
Pages de couleur
- Pages damaged/  
Pages endommagées
- Pages restored and/or laminated/  
Pages restaurées et/ou pelliculées
- Pages discoloured, stained or foxed/  
Pages décolorées, tachetées ou piquées
- Pages detached/  
Pages détachées
- Showthrough/  
Transparence
- Quality of print varies/  
Qualité inégale de l'impression
- Includes supplementary material/  
Comprend du matériel supplémentaire
- Only edition available/  
Seule édition disponible
- Pages wholly or partially obscured by errata  
slips, tissues, etc., have been refilmed to  
ensure the best possible image/  
Les pages totalement ou partiellement  
obscurcies par un feuillet d'errata, une pelure,  
etc., ont été filmées à nouveau de façon à  
obtenir la meilleure image possible.

This item is filmed at the reduction ratio checked below/  
Ce document est filmé au taux de réduction indiqué ci-dessous.

10X	14X	18X	22X	26X	30X
<input type="checkbox"/>	<input type="checkbox"/>	<input checked="" type="checkbox"/>	<input type="checkbox"/>	<input type="checkbox"/>	<input type="checkbox"/>
12X	16X	20X	24X	28X	32X

The co  
to the p

The im  
possibl  
of the  
filming

Origina  
beginn  
the las  
sion, o  
other c  
first pa  
sion, a  
or illus

The las  
shall c  
TINUED  
whiche

Maps,  
differen  
entirely  
beginn  
right a  
require  
methoo

The copy filmed here has been reproduced thanks to the generosity of:

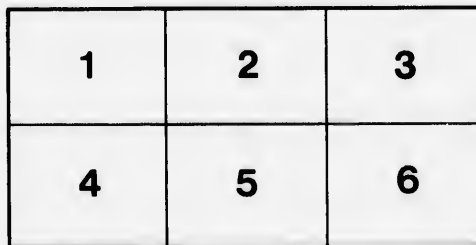
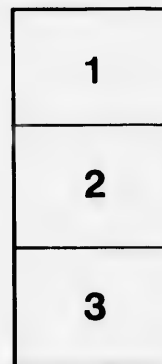
Library of the Public  
Archives of Canada

The images appearing here are the best quality possible considering the condition and legibility of the original copy and in keeping with the filming contract specifications.

Original copies in printed paper covers are filmed beginning with the front cover and ending on the last page with a printed or illustrated impression, or the back cover when appropriate. All other original copies are filmed beginning on the first page with a printed or illustrated impression, and ending on the last page with a printed or illustrated impression.

The last recorded frame on each microfiche shall contain the symbol  $\rightarrow$  (meaning "CONTINUED"), or the symbol  $\nabla$  (meaning "END"), whichever applies.

Maps, plates, charts, etc., may be filmed at different reduction ratios. Those too large to be entirely included in one exposure are filmed beginning in the upper left hand corner, left to right and top to bottom, as many frames as required. The following diagrams illustrate the method:



L'exemplaire filmé fut reproduit grâce à la générosité de:

La bibliothèque des Archives  
publiques du Canada

Les images suivantes ont été reproduites avec le plus grand soin, compte tenu de la condition et de la netteté de l'exemplaire filmé, et en conformité avec les conditions du contrat de filmage.

Les exemplaires originaux dont la couverture en papier est imprimée sont filmés en commençant par le premier plat et en terminant soit par la dernière page qui comporte une empreinte d'impression ou d'illustration, soit par le second plat, selon le cas. Tous les autres exemplaires originaux sont filmés en commençant par la première page qui comporte une empreinte d'impression ou d'illustration et en terminant par la dernière page qui comporte une telle empreinte.

Un des symboles suivants apparaîtra sur la dernière image de chaque microfiche, selon le cas: le symbole  $\rightarrow$  signifie "A SUIVRE", le symbole  $\nabla$  signifie "FIN".

Les cartes, planches, tableaux, etc., peuvent être filmés à des taux de réduction différents. Lorsque le document est trop grand pour être reproduit en un seul cliché, il est filmé à partir de l'angle supérieur gauche, de gauche à droite, et de haut en bas, en prenant le nombre d'images nécessaire. Les diagrammes suivants illustrent la méthode.

laire  
s détails  
ques du  
nt modifier  
iger une  
e filmage

/  
uées

aire

by errata  
ned to  
ent  
une pelure,  
façon à



32X

*P. H. S.*

*4 Children of Lou  
& Lord of Wood*

*A*

224026534

PART OF  
NEW

BRUNSWICK

WESTMORELAND  
CHUMBERLAND  
COLCHESTER

JOHN CO.

BAY OF FUNDY

ANNAPOLIS

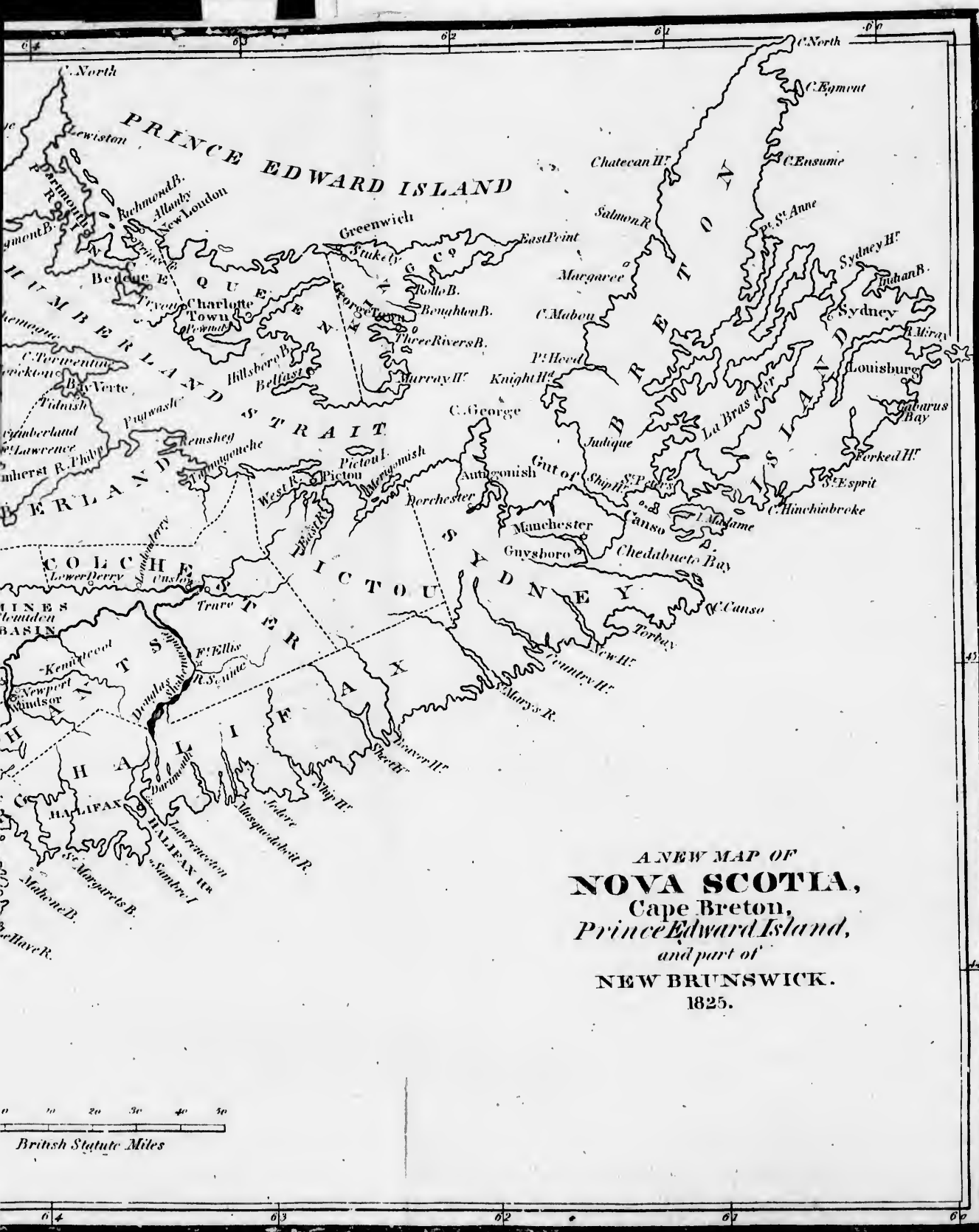
QUEEN'S

SHELburne

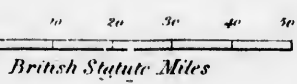
LUNENBURG

HALIFAX





A NEW MAP OF  
**NOVA SCOTIA,**  
 Cape Breton,  
*Prince Edward Island,*  
 and part of  
**NEW BRUNSWICK.**  
 1825.







*A*



THE  
FARMER'S ALMANAC,

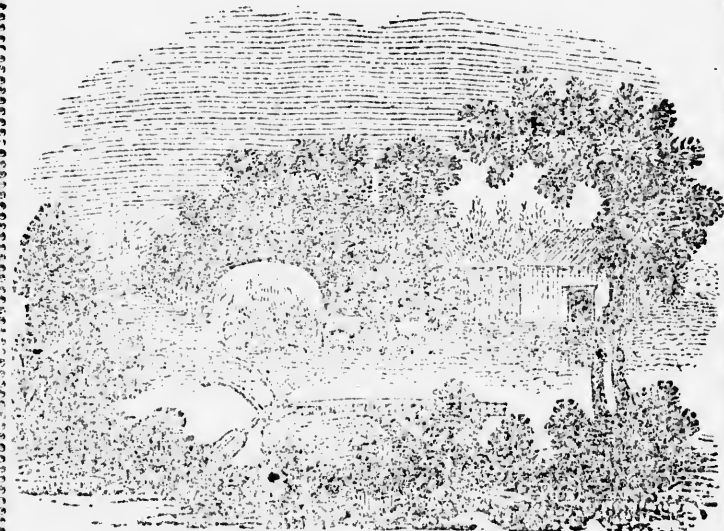
FOR THE YEAR OF OUR LORD,

1829;

*Being the first after Bissextile, or Leap Year ;*

CALCULATED FOR THE MERIDIAN OF HALIFAX IN NOVA-  
SCOTIA, BUT WILL SERVE FOR ANY PART  
OF THE PROVINCE.

Containing, besides the large number of Astronomical Calculations  
and the Farmer's Calendar for every month in the year, a  
great variety of useful and entertaining matter.



“ Still on its march, unmoiled and unfelt,  
Moves on our being. We do live and breathe,  
And we are gone. The Spoiler heeds us not.  
We have our spring-time and our rottenness ;  
And as we fall, another race succeeds,  
To perish likewise.”

HALIFAX, N. S.

SOLD BY C. H. BELCHER.

**A PERPETUAL WEATHER TABLE.**

By Doctor HERSCHEL.

The following table constructed by the celebrated Doctor Herschel, upon a philosophical consideration of the attraction of the sun and moon in their several positions as to the earth, and confirmed by the experience of many years actual observation, may, without doubt, suggest to the observer, what kind of weather will probably follow the moon's entrance into any one of her quarters, and that as near the truth, that it will be very seldom found to fail.

	SUMMER.	WINTER.	
If it be a new or full moon, or the moon enters into the first or last Quarter, at the hour of 12 at noon, or between the hours of 2 and	Very rainy.	Snow or Rain.	
4 - - - -	- - - - -	Fair and Mild.	
4 to 6 - -	Changeable	Fair	
6 to 8 - -	Fair, if wind N. W. Rainy, if S. or S. W.	Fair and Frosty. If N. or N. E.	
8 to 10 - -	- - - - -	Rain or Snow.	
10 to midnight	Ditto.	If S. or S. W. Ditto	
Midnight to 2	Fair.	Fair and Frosty Hard Frost unless wind S. or W.	
Forenoon. {	2 to 4 -	cold, with frequent showers.	Snow and stormy
	4 to 6 - -	Rain.	Ditto.
	6 to 8 - -	Wind and Rain	Stormy
	8 to 10 - -	Changeable.	cold rain if W.
	10 to 12 - -	Frequent showers.	snow if E.

From the above Table it will be seen that the nearer to midnight either the moon's periodical changes (i. e. within two hours either before or after it) the more fair the weather is, in summer; while the nearer to noon that the changes take place, the reverse may be expected. Fair weather may also follow when either of the periodical changes occur during the afternoon six hours, viz. from four to ten, but this is mostly dependant on the wind.—The moon's entrance during all the hours after midnight except the two first, is unfavourable to fair weather. The like may nearly be observed in winter. Every farmer ought to preserve a copy of this table, and carefully to regulate his pursuits, by its indications. Such a line of conduct might materially promote his comforts and his interest, while in no case would it disturb his prospects, or destroy his hopes.

ROADS TO  
of Inuk  
Freder  
From I  
Dig  
Northrup  
Rockingh  
Parkman  
Fultz's,  
Hiltz's  
Fitzmaur  
ditto,  
Pence's,  
M'Lellan  
Trefry's,  
Road,  
Montagu  
(Wallac  
Northrup  
Mrs Wilc  
sor, (4  
Falmouth  
Songst  
Smith's—  
Northrup  
Casperca  
Martin  
Graham's  
ler's Ho  
Bragg's—  
ton's—  
Kentv  
Sharp's,  
Aylesfor  
Harris's,  
Wilmet,  
Leonard  
Bridget  
Annapo  
vis's, M  
ler's, (1  
Ditmas,  
Bear Ri  
cheste  
\*Digby.

ROADS to the Principal Towns in the Province, with the names of Innkeepers and distances, and the roads to St. John and Fredericton, N. B.

**TABLE.**

Doctor Herschel, the sun and moon by the experiment, suggest to follow the moon's path, that it

**WINTER**

ow or Rain.

r and Mild. Fair

r and Frosty. N. or N. E.

n or Snow.

. or S. W. Ditto

ard Frost wind

S. or W.

w and stormy

Ditto. Stormy rain if W.

E. midnight either before or the nearer to expected. Fair changes occur t this is mostly the hours after weather. The ght to preserve s, by its indica e his comforts spects, or de-

From Halifax to	To Cumberland.	Terrian's, Montagan Cove,
Digby.	Fultz's, 12	15
Northrup's, 3	Fletcher's 6	Corning's, Beaver River, 14
Rockingham, 3	Stultz's 5	Farry's, Yarmouth Lakes, 8
Rarkman's, 3	Hall's 3	Smith's — Richan's, Yarmouth Church, 5
Fultz's, 3	Key's 6	Blauvelt's, Tuskett Village, 10
Hiltz's away house 9	McKeen's 32	Nickerson's, Apud-tic river, 8
Fitzmaurice's new ditto, 12	Gay's River, Corbett's—Miller's 3	Spinney's, Apublic Bay, 5
Pence's, 32	Stowiacke, Pollock's 3	Larkin's, Pubnico 10
M'Lellan's, 4	Polly's 3	Kendrick's, Barrington, 13
Trefry's, Newport Road, (35) 5	Clark's 7	Powell's, Clyde riv. 5
Montagu House, (Wallace's) 1	Traro, Witter's—Blanchard's, 62	Hargraves, Shelburne, 16
Northrup's 4	Onslow, Gourley's, 5	Whole distance, 162
Mrs Wilcox, Windsor, (45) 5	Lower Village, Yewill's 14	From Halifax to Lunenburg.
Falmouth, bridge, Songster's 4	Foot of Cob Mountain Clark's, 6	Mill Inn, 9
Smith's—Harvie's 1	Top of Cob Mountain, J Purdy's 6	Johnson's, Hammond's plains, 44
Northrup's 5	River Philip, Hewson's, 9	McLean's, Margaret's Bay, 17 1/2
Caspeaux river, Martin's 5	Stewart's, 16	Crandle's, head of Chester Basin, 16
Graham's—Fowler's Horton, 6	Amherst, Bent's, 16	Lovett's, Chester, 6
Bragg's—Hamilton's—Fuller's, Kentville, (72) 6	Fort Cumberland, Wetherhead's. 7	Zwicker's, head of Mahone Bay, 15
Sharp's, 7	Whole distance, 131	Berringer's, Lunenburg, 6
Aylesford, Crane's, 8	From Annapolis to Shelburne.	Whole distance, 73 1/2
Harris's, 1	Clement's Church, 9	From Lunenburg to Liverpool.
Wilmot, Gibbon's 12	Bear River Bridge, 8	Miller's ferry Lave River, 7
Leonard's, 10	Read's, Digby 9	
Bridgetown, 5	Everet's, Weymouth road, 13	
Annapolis, Mrs Davis's, Mrs Chandler's, (130) 15	Cosman's, Weymouth Church, 6	
Ditmas, 8	Journie's, Scissiboo 2	
Bear River, Winchester's, 5	Cosman's, Clare, 4	
*Digby, Ruggles' 7		
150		

Manning's,	7	M'Keen's,	11	Joseph Black's,	3
Conrod's, ferry,		Leckie's,	12	Ben Charter's,	5
Port Medway,	7	Robt Archibald,	4	Harper's & Kelly's,	
Mack's	6	Robt Goddes'	4	bond of the Petti-	
Bell's, Herring		Henry's,	4	codiack river,	15
Cave,	8	Dunlar's W. branch		Jacques'	15
m'Lean's Liverpool	2	E. River, Pictou,	26	Major Scott's	3
—		W. M'Kay,	8	Blakeney's	7½
Whole distance,	37	John Fraser's,	7	Pittfield's	10
To Cumberland via		Across the harbour		Couple's, Sussex	
Parrsborough,		to Walsley Court		Vale,	13½
Windsor,	45	House,	1	Baxter's Finger	
Parrsboro' by wa-		Whole distance,	95½	Board	12
ter, Randall's,	30	Cross roads from Ar-		Gilles, head of	
Fullerton's,	11	chibald's to Scott's	20	Bellisle,	5
Jenks'	½	From Halifax to An-		Cromwell's,	5
Macin Bridge,		tigonish.		Watson's, Washa-	
Furlong's,	6½	Blanchard's, West		domoak,	8
Pugsley's, Napan,	9	River, Pictou,	92	Nevers' & Oakley's	
Amherst, Bent's,	9	Chisholm's New		Gimseg,	7
Fort Cumberland,		Glasgow	16	Tilly's,	10
Wetherhead's,	7	Sutherland's, Meri-		Widow Purley's,	10
—		gomish,	7	Fredericton,	10
Whole distance,	118	Murray's	10		292
From Halifax to Pic-		Mc Donald's Gulf		To St. John, N. B.	
ton,		Shore,	10	Baxter's at the Fin-	
Truro, Blanchard's		Mrs Simmond's and		ger Board,	237
and Witter's,	6½	Wolmesley's,	16	From Baxter's to	
Lyon's,	7	—		De Forrest's,	
Archibald's, Sal-		Whole distance,	145	Hampton Ferry,	12
mon River,	8	The road over the		Beattie's, Hammond	
Stewart's, Mount		Antigonish moun-		River,	10
Tom,	10	tains shortens the		St. John,	14½
Blanchard's, West		above distance a-			273½
River,	3	bout 10 miles.			
Mrs Thane's and		To Fredericton, N. B.			
Mrs. Davidson's.		Bent's, Amherst	125		
Pictou,	10	Well's, Hewson's,			
Whole distance,	102	Tantramare			
To Pictou via Mus-		Marsh,	10		
quodoboit.		Bass' "London Ta-			
Dartmouth Ferry,	1½	vern," Sackville,	9		
Preston, Bradley's,	6	Morrison's "Dor-			
Putnam's farm,	5	chester Arms,"			
Hart's,	5	Dorchester,	9		

\*A Pac every Th morning rives at D

4 The Horton e Parrsboro to be at Parrsboro o'clock is so as to b Parrsboro ing—The

SAMBI mia. From mere gas as much to the so give it m please

NORR. Light S. league; water, th ing from When 4 miles, proper d

When point of When the harl fathoms In par in near from the There Comi not fail the Lig of it.

ph Black's, 3  
 Charter's, 5  
 ber's & Kelly's, 5  
 d of the Petti-  
 lack river, 15  
 nes', 15  
 r Scott's, 3  
 eney's, 7  
 old's, 10  
 le's, Sussex, 13  
 er's Finger, 13  
 rd, 12  
 s. head of, 12  
 isle, 5  
 well's, 5  
 on's, Washa-  
 oak, 8  
 rs' & Oakley's, 8  
 seg, 7  
 s, 10  
 w Purley's, 10  
 rington, 10

---

292  
 St. John, N. B.  
 r's at the Pin-  
 board, 237  
 Baxter's to  
 orrest's,  
 ton Ferry, 12  
 s, Hammond  
 , 10  
 n, 14½

---

2734

\*A Packet leaves Digby for Saint John, New-Brunswick, every Thursday evening, and arrives there the next morning; leaves St. John on Saturday at 12 o'clock, and arrives at Digby the following morning.

† The Parrsboro' Packet sails regularly to Windsor and Horton every week, from the 1st April to Christmas; leaves Parrsboro' on Monday (wind and weather permitting) so as to be at Windsor on Tuesday, and will sail from thence (for Parrsboro') the first high water that happens at or after 8 o'clock in the morning,—leaves Parrsborough on Thursday, so as to be at Horton on Friday; and will sail from thence for Parrsboro' the first high water after 8 o'clock in the morning—The Packet frequently goes to Windsor twice a week.

DIRECTIONS FOR SAILING UP HALIFAX HARBOUR.

SAMBRO Island and Light House is in Latitude 44 deg. 30 min. N. and longitude 63 deg. 42 min. W.

From the westward, bring the Light to bear N. E.; if it bears more easterly, stretch to the southward till it bears N. E. (and as much northerly as you please, there being no shoal or ledge to the southward;) then keep it open on your larboard bow; give it more than a mile and a half birth, as much more as you please

NOTE.—The easternmost of the western ledges lie from the Light S. W. distant 2 miles: the other W. S. W. about one league; the eastern ledges lie in a range nearly, some above water, the outermost one mile and a half from the Light, bearing from it E. N. E.

When the Light bears north distant about 2 miles, run N. E. 4 miles, then north will carry you to Chebucto Head; at a proper distance clear of all danger.

When abreast of Chebucto Head, run N. ½ W. for the south point of George's Island.

When within half a mile of George's Island, you may enter the harbour west of it in 12 fathoms, or east of it in fifteen fathoms water.

In passing between Sandwich point and Mauger's beach, run nearest the point, to shun a shoal which runs off S. W. from the beach.

There is also a shoal lying one mile south of Sandwich point

Coming from the eastward, run for the Light and you cannot fail seeing Chebucto Head, as you open Halifax Harbour; the Light being 4 miles distant from the Head to the S. W. of it.

The Light-House erected last year on the Tower at the west end of Mauger's Beach, at the entrance of Halifax Harbour is for the express purpose of leading vessels up the harbour, the greater part of the eastern side is darkened, viz— from N. E. by N. to S. half E.—The following are the directions published by the Commissioners of Light Houses, which should be attended to:—

“Vessels coming from the Eastward must keep Sambro Light open to the southward of Chebucto head and until the light opens on Mauger's beach, which will then bear N.  $\frac{1}{2}$  W—they will then be to the westward of Thrum Cap Shoals, and may shape a course up the harbour, always keeping the light on the Beach open, and on the starboard bow.

Vessels coming from the westward will see this Light when they are as far to the eastward as Chebucto head, by keeping it open, and on the starboard bow, it will lead them up to the beach.

This Light will appear of a red colour, which will distinguish it from any other on the coast. It is fifty eight feet high from the level of the sea.”



### Signals made at Fort George when vessels are coming up the Harbour.

One ball close for a square rigged vessel.	A do over a do half hoisted for 7 do
One ball half hoisted for 2 do	A do under 2 do close for 8 do
Two balls close for 3 do	A do between two do separated for 9 do
Two balls separated for 4 do	A flag of any colour for 10 or more do
A pendant of any colour for 5 do	
A do. under a ball for 6 do	

[The above are hoisted at the east or west yard arm, according to the quarter the vessel first appears in, with the addition of a ball at the centre of the yard, until the vessel can be seen, when one or more of the following descriptive colours will be hoisted at the mast head.]

- An Union for a flag ship, with or without a squadron.
- Do. with a red pendant over it, for a two decker.
- Do. with a blue pendant over it, for a frigate.
- Do. with a white pendant over it, for a small armed vessel.
- A red flag pierced white, for a packet.
- A blue pendant, for a merchant ship.
- A red pendant for a merchant brig
- A white pendant for a topsail schooner or sloop.
- A blue and white flag, horizontally divided, neutral-fleet.
- White and blue pendant, neutral man of war.
- Blue flag, neutral merchant ship.

A red, w  
A red fl  
An Unic  
tainied, or  
A white  
A ball a  
should inn

Made on t  
which ves  
A red fl  
A red a  
A red p  
A white  
A blue  
A blue  
A blue  
A white  
A red a  
of Saint L  
A blue  
or Bay of  
A white  
board.  
A white

For a s  
A ship  
in the ce  
A loze  
Do. do

Me  
RED.  
J. & M  
Creig  
Deble  
Fras  
John  
Bogg  
next th  
L'Ep

- A red, white and blue flag, an enemy's fleet.
- A red flag, an enemy's merchantman.
- An Union Jack over neutral or enemy's signals, vessel is detained, or prize.
- A white flag over any signal, vessel bears a flag of truce.
- A ball at the mast head, vessel is on shore or in distress—should immediate aid be necessary, guns are to be fired.

### Explanation of Signals

Made on the Ensign Staff at Fort George, to denote the part which vessels entering the Harbour have arrived from.

- A red flag from Great-Britain.
- A red and white do. the Mediterranean.
- A red pendant, the Continent of Europe.
- A white and red pendant, Madeira, Canary, or Western Isles.
- A blue flag, West Indies.
- A blue pendant, Bermudas, Bahamas, or Turk's Islands.
- A blue and white flag, United States.
- A white flag, Newfoundland.
- A red and white flag, horizontally divided, Quebec or Gulf of Saint Lawrence.
- A blue and white flag, horizontally divided, New Brunswick, or Bay of Fundy.
- A white and blue pendant, vessel has an English mail on board.
- A white pendant, coasts of Nova Scotia and Cape Breton.

### Repeat from Out Posts at Fort George.

- For a square rigged vessel, two balls of size
- A ship, a large ball at the end of the yard with a small ball in the centre.
- A lozenge in the centre close up, a sloop or schooner.
- Do. do half hoisted, two or more schooners.

### Merchant's Private Signals—Port of Halifax.

- RED, &c.—D. & E. Starr, red flag,
- J. & M. Tobin, a red flag crossed white
- Creighton & Grassie, do, crossed white diagonally.
- Deblois & Mitchell, do. centre a white square.
- Frasers & Co. red and white, white next the mast.
- John Brown, a red burgee, centre letter B.
- Boggs & Hartshorne, a red and white chequered flag, red next the mast uppermost.
- L'Epousie & Hall, a red and white chequered flag.



C. & W. Roche, a red flag, centre a white diamond.  
 Mitchell & Strachan, do. pierced white.  
 Fairbanks & McNab, white flag crossed blue.  
 Thomas & Michael Tobin, flag crossed diagonally, red next  
 the mast, and red outside—white above and below.

BLUE, &c.—J. H. Tidmarsh, a blue flag.

Joseph Allison & Co. } a blue burgee.  
 E. Collins & Co. }

M. B. Almon, a blue flag crossed white.

James Forman; jr. do crossed white diagonally.

S. Cunard & Co. do. centre a white star.

Wm. Pryor & Co. a blue and white flag, blue uppermost.

M. Richardson, a blue and red flag, blue next the mast.

Wm. Story, a blue flag, centre a white square.

John Clark, do. crossed white diagonally.

George P. Lawson, a blue and white chequered flag, white  
 next the mast, uppermost.

Wm. Deblois & Co. a blue flag bordered white, letter D. in  
 the centre enclosed by two triangles reversed

G. & A. Mitchell, a blue and white flag, blue uppermost.

WHITE, &c.—J. & T. Williamson, white flag.

J. L. Starr, & Co. do. centre a blue star.

John Tremain, do. crossed blue.

C. Harris, do centre a red square

Halifax Packet Company, a white, blue, white and red bur-  
 gee, white next the mast

Wm. Lawson, flag crossed diagonally, white next the mast  
 and white outside, blue above and below.

Francis Stevens, blue, white and blue, blue next the mast.

James Lyons & Co. white and red flag, white uppermost.

Wm. Strachan, white, red and white ditto, white next the mast

Reynolds & Co. a white burgee crossed red.

Fiddes & Robertson, white and red flag, red uppermost

J & H Grant, a white flag, centre G S.

Wm. Stairs, a white flag pierced blue.

McKay & Sinclair, a white burgee, centre a blue square.

YELLOW, &c.—Temple & Lewis Piers, a yellow flag, cen-  
 tre a blue ball.

The foregoing Signals are worn at the main. Upon vessels  
 arriving in sight from the Light House so wearing a signal, a  
 similar one is hoisted on the Telegraph Staff, or at the yard  
 arms of the Signal Staff at Fort George, with a pendant under  
 it, descriptive of the class of vessels to which she belongs.

WEST

A Coac  
 Annapoli  
 each wee  
 at 6, from  
 to 8th Fe  
 A Coac  
 for Wind  
 Monday,

From Ha

"

"

"

"

"

"

"

"

"

"

"

"

From

Way

Infan

Five

Betw

Each

to carry

above

Agent.

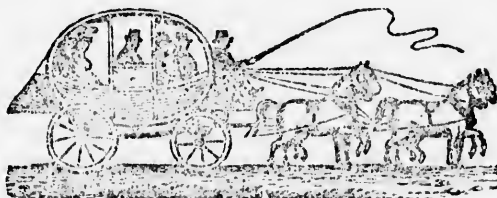
• It i

only g

**WESTERN LINE OF STAGE COACHES.**

(CONVEYING THE ROYAL MAILS.)

FROM HALIFAX TO ANNAPOLIS.



A Coach leaves Halifax for Windsor and Kentville, and Annapolis for Kentville, on *Tuesday, Thursday and Saturday*, each week. At 5 o'clock A.M. from 12th May to 12th Aug., at 6, from 12th Aug to 22d Sept., at *day light*, from 22d Sept. to 8th Feb.; and at 6, from 8th Feb. to 12th May.\*

A Coach also leaves Kentville for Annapolis, and another for Windsor and Halifax, at the hours above mentioned, on *Monday, Wednesday and Friday* in each week.

**RATES OF FARE.**

From Halifax to	(12 miles)	£	s	d
From Halifax to Fultz's,	21	0	9	0
" " Hiltz's,	27	0	12	6
" " Mount Uniacke,	35	0	15	0
" " Newport Road, Terfry's,	45	0	17	6
" " Windsor,	60	1	5	0
" " Martin's Gaspereaux,	70	1	7	6
" " Kentville,	115	2	7	6
" " Bridgetown,	130	2	10	0
" " Annapolis,	26	0	12	6
" Windsor to Kentville,	18	0	7	6
" Kentville to Aylesford,	45	1	1	3
" " to Bridgetown,	60	1	7	6
" " to Annapolis,				

From Annapolis to Halifax, according to the above scale.

Way Passengers, 6d. per mile.

Infants in arms, Free.

Five years and under  $\frac{1}{4}$  fare.

Between 5 and 14 years  $\frac{1}{2}$  Fare.

Each passenger, paying the full amount of fares, is allowed to carry 20 lbs. wt. of baggage; and all baggage or parcels, above that weight, are to be paid for at the discretion of the Agent.

\* It is expected that during the winter months, the Coaches will only go twice a week, of which notice will be given in the papers.

All glass, and other brittle substances will be forwarded at the risk of the Owners only.

The Company will not be responsible for a greater value than Five pounds, for any description of parcel or trunk that may be lost, unless specially agreed for by the Agent at the time of booking the same. Nor will the Company be liable for any Money, unless stated to the Agent at the time to be such, and 2 1-2 per cent. be paid him thereon for Freight and Insurance of the same.

AGENTS—At Halifax, John Harvie ; Windsor, John Todd; Kentville, John Hutchinson ; Annapolis, Mr. Mossman.

The above line of communication has been established by a small Company, and ranks among the important enterprizes going forward in this Province. The Coaches are easy and commodious, the horses well-trained, and the drivers skillful and experienced. The rules of the Company are exceedingly liberal towards Travellers, and since its commencement, every accommodation has been afforded.



*Lodges under the Jurisdiction of the Provincial Grand Lodge of Nova-Scotia.*

**ON THE REGISTRY OF ENGLAND.**

No 188, St Andrews's, held at Halifax, 1st Tuesday in the month  
No 265, St John's, held at Halifax, 1st Monday in ditto.

**ON THE REGISTRY OF NOVA SCOTIA.**

- No 1, Union, held at Halifax, 2d Monday in the month.
- No 2, Virgin, at do. 4th Monday do
- No 7, Temple, at Guysborough, 1st Tuesday do.
- No 10, Hiram, at St elburne. 2d Monday do.
- No 11, St. George's at Cornwallis, 1st Monday do.
- No 19, St George's at Mauderville, N B. 2d Tuesday do.
- No 21, Sion, at Sussex Vale, N B. first Monday after full moon.
- No 22, Solomon, at Fredericton, N B. 1st Tuesday after full moon
- No 26, St John's, at CharlotteTown, P E Island, 2d Tuesday do.
- No 28, Harmony, at Sydney, C B. 1st Wednesday do.
- No 29, St John, at St John, N B. 1st Tuesday do-
- No 31, Midian, at Kingston, N B. 2d do do
- No 34, Orphan's Friend, at St. Stephen's, N B. 2d Wednesday after every full moon.
- No 35, New Caledonia, at Pictou, 2d Tuesday in the month

No 36, New  
No 37, East  
full m  
No 38, Uni  
No 39, Roy  
No 40, Mus  
moon  
No 43, St I  
No 44, Uni  
No 45, Fort  
No 46, Mor  
No 47, Mo  
No 48, Col  
No 49, Co  
No 50, Gold  
moon  
No 51, Cur  
No 52, All  
No 53, Roy  
3d T  
No 54, Oxfo  
Thur  
No. 55, St.

♈ Aries—  
♉ Taurus  
♊ Gemini  
♋ Cancer  
♌ Leo—h  
♍ Virgo—

☉ The S  
☽ The M  
♁ Mercu  
♂ A P  
♆ The  
♄ Cor  
♃ Qu  
3 signs f

- No 36, Newport, at Newport, 1st Tuesday after every full moon  
 No 37, Eastern Star, at St Andrews, N B. every Wednesday before full moon  
 No 38, Union, at St John, N B. every 2d Tuesday in the month  
 No 39, Royal Standard, at Halifax, 2d Tuesday do  
 No 40, Musquodobit, at Musquodobit, every Tuesday before the full moon.  
 No 43, St Lawrence, at Liverpool, N. B. 1st do in the month  
 No 44, Unity, at Lunenburg, 1st Tuesday in the month  
 No 45, Fort Edward, at Windsor, 2d Monday do  
 No 46, Morning Star, at Woodstock, N B. Tuesday before full moon  
 No 47, Moira, at Rawdon, Monday before do  
 No 48, Colchester Union, at Truro, 1st Tuesday in the month  
 No 49, Concord, at Barrington, 1st Monday do  
 No 50, Golden Rule, at Hopewell, N B- 1st Wednesday after full moon  
 No 51, Cumberland Harmony, at Amherst, 1st Tuesday in the month  
 No 52, Albion, at St John, N B. 1st Monday do  
 No 53, Royal Albion, Travelling Warrant 1st Battalion Rifle Brigade, 3d Tuesday in the month  
 No 54, Oxfordshire Light Infantry, Travelling Warrant 52d Regt 1st Thursday in the month  
 No. 55, St. Mary's, at Digby, 2d Tuesday, in the month.



Signs of the Zodiac.

♈ Aries—head.	♎ Libra—reins.
♉ Taurus—neck.	♏ Scorpio—secrets.
♊ Gemini—arms.	♐ Sagittarius—thighs.
♋ Cancer—breast.	♑ Capricornus—knees.
♌ Leo—heart.	♒ Aquarius—legs.
♍ Virgo—belly.	♓ Pisces—feet.



The Planets and their relations.

☉ The Sun.	♀ Venus.	♃ Jupiter.
☾ The Moon.	♁ The Earth.	♄ Saturn.
☿ Mercury.	♂ Mars.	♅ Georgian.

- ♊ A Planet's ascending node.  
 ♋ The descending node.  
 ♌ Conjunction, or Planets situated in the same longitude.  
 ☐ Quadrature, or Planets situated in longitudes differing 3 signs from each other.

♃ Opposition, or Planets situated in opposite longitudes, or differing 6 signs from each other.

The Planet Venus (♀) will be morning star till May 20th thence evening star through the year.

Jupiter (♃) also will be morning star till June 1st, thence evening star till Dec. 18th, and then again morning star.

Mars (♂) will be evening star till Aug. 18th, thence morning star to the end of the year.



Chronological Cycles for 1829.

Dominical Letter.	D   Solar Cycle,	18
Lunar Cycle, or golden numb.	G   Roman Indiction,	2
Epact,	25   Julian Period,	654

Movcable Feasts.

Septuagesima Sun. Feb. 15.	Low Sunday, April 26.
Quinquagesima or Shrove Sun. Mar. 1.	Rogation Sun. May 24.
Ash Wed. or 1st day Lent., 4	Ascen. Day or Holy Th. May 28.
Mid. Lent. Sun. March 29.	Whit Sunday, June 7.
Palm Sunday, April 12.	Trinity Sunday, June 14.
EASTER DAY, April 19.	Advent Sunday, Nov. 29.

Ember Days.

March 11, 13, 14.	September 16, 18, 19.
June 10, 12, 13.	December 16, 18, 19.

Holidays at the Public Offices.

1st Jan'y. New Year's Day.	8th June, Whit Monday.
29th ,, K. Geo. IV's access.	9th ,, Whit Tuesday.
17th March, St Patrick.	19th July, Geo 4th crowned.
17th April, Good Friday.	5 h Nov. Powder Plot.
20th ,, Easter Monday.	30 h ,, St Andrew.
21st ,, Easter Tuesday.	25th Dec. Christmas Day.
23d ,, St. George. Geo. 4 b.d.k.	

Of each of them, there v  
 I. The f  
 h. 29m. mo  
 America, an  
 digits eclips  
 II. The  
 5h 50m afte  
 it will not b  
 Pacific Ocea  
 it will be vis  
 the Three-4  
 will be visib  
 III. The  
 visible, as fo

18  
 2  
 654  
 Digits ecl  
 side of the E  
 IV. The  
 27, at 9h 32  
 visible. Bu  
 longitude 15  
 and annular  
 ular at the  
 noon; at th  
 about 8 digit  
 Sea, the pen  
 these places  
 33° 45' N.  
 18

LEFT HA  
 month. Se  
 the sun. F  
 days in hou  
 and minutes  
 moon's risin  
 the moon's  
 Twelfth, Su  
 RIGHT H  
 Second, Mi  
 Third, Farn  
 The top o  
 phases, or t  
 last quarter

## ECLIPSES.

13

Of each of the two great LUMINARIES in the heavenly system, there will be two Eclipses this year, as follows—

I. The first will be of the moon on Friday March 20th, at 9h. 29m. morning, invisible. On the N. W. Coast of North America, and the N. E. of Asia, it will be visible, about 4½ digits eclipsed on the Moon's northern limb.

II. The second will be of the SUN on Friday April 3d, at 5h 50m afternoon; yet by reason of the Moon's south latitude it will not be visible in North America. But in the South Pacific Ocean, lat. 32° 15' S. long. 149° 6' 3" W. of London it will be visible, central and total, on the meridian. Also, at the Three-King's Islands, and the North of New Holland, it will be visible and very great, nearly total. ☾'s lat. 35' 15" S.

III. The third will be of the MOON, on Sunday, Sept. 13th, visible, as follows :

Beginning at	- - -	1h. 12m	}	Morning.
Ecliptic opposition,	- 2	16		
Middle,	- - -	2 24		
End,	- - - - -	3 36		
Duration,	- - - - -	2 24		

Digits eclipsed 6° 5' on the ☾'s southern limb, in the north side of the Earth's shadow.

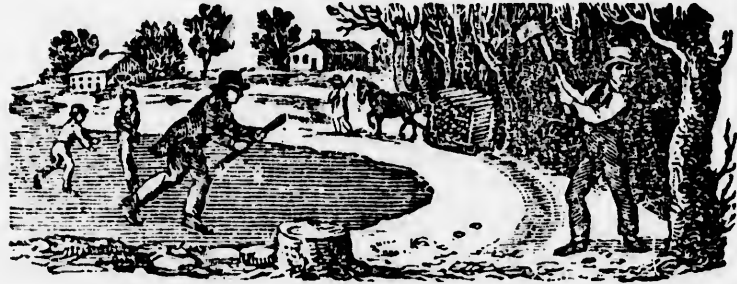
IV. The fourth and last will be of the SUN, on Sunday, Sept 27, at 9h 32m. evening; Sun below the horizon, of course invisible. But in the North Pacific Ocean, lat. 39° 22' 45" north, longitude 157° 5' 30" E. of London, it will be visible, central, and annular on the meridian. It will also be visible and annular at the City of Jeddo, in the island of Nippon, in the forenoon; at the City of Pekin, in China, the sun will rise with about 8 digits eclipsed; and in the Gulf of Japan, the Yellow Sea, the peninsula of Corea, and the western part of China, in those places, this will be a great and visible eclipse. ☾'s lat. 33' 45" N.

### Explanation of the Calendar Pages.

LEFT HAND PAGE.—First column contains the days of the month. Second, the day of the week. Third, the rising of the sun. Fourth, the setting of the sun. Fifth, the length of days in hours and minutes. Sixth, Sun's declination in degrees and minutes. Seventh, the moon's age in days. Eighth, the moon's rising or setting. Ninth, the Moon's southing. Tenth, the moon's place in the signs. Eleventh, high water at Halifax. Twelfth, Sun slow or fast.

RIGHT HAND PAGE.—First column, days of the month.—Second, Miscellaneous Phenomena, Holidays, Weather, &c. Third, Farmer's Calendar.

The top of the columns on each page shows the Moon's phases, or the times of new and full moon, and of the first and last quarter or two quadratures with the sun.



New Moon 5th d. 11h. 38m. morn. | First Quar. 12th d. 3h 4m morn.

D	D	☉	☽	Days	Sun's	☾	☾	☾	☾	High	S
M	W	rises	sets	len'th	dec.S	A	& S.	south.	s place.	water	sl
1	Th	7 38	4 22	8 44	23 1	26	3 6	8 13	secrets	3 23	4
2	Fr	7 38	4 22	8 44	22 55	27	4 12	9 5	thighs	4 15	„
3	Sa	7 38	4 22	8 44	22 50	28	5 16	10 0	thighs	5 10	5
4	D	7 37	4 23	8 46	22 44	29	6 16	10 58	knees	6 8	„
5	M	7 36	4 24	8 46	22 37	●	sets	11 58	knees	7 8	6
6	Tu	7 35	4 25	8 50	22 30	1	6 12	eve 58	legs	8 8	„
7	W	7 35	4 25	8 50	22 30	2	7 22	1 56	legs	9 6	7
8	Th	7 34	4 26	8 52	22 15	3	8 33	2 52	feet	10 2	„
9	Fr	7 33	4 27	8 54	22 6	4	9 44	3 46	feet	10 56	8
10	Sa	7 33	4 27	8 54	21 57	5	10 54	4 39	head	11 49	„
11	D	7 32	4 28	8 56	21 48	6	morn. 5	29	head	eve	„
12	M	7 31	4 29	8 58	21 38	7	0 26	20	head	0 40	9
13	Tu	7 31	4 29	8 58	21 28	8	1 8	7 10	neck	1 30	„
14	W	7 30	4 30	9 0	21 18	9	2 11	8 0	neck	2 20	„
15	Th	7 29	4 31	9 2	21 7	10	3 12	8 50	arms	3 10	10
16	Fr	7 28	4 32	9 4	20 56	11	4 10	9 40	arms	4 0	„
17	Sa	7 28	4 32	9 4	20 43	12	5 3	10 29	breast	4 50	11
18	D	7 27	4 33	9 6	20 32	13	5 58	11 18	breast	5 39	„
19	M	7 26	4 34	9 8	20 19	☉	rises.	morn.	breast	6 28	„
20	Tu	7 25	4 35	9 10	20 7	15	5 40	0 5	heart	7 15	„
21	W	7 24	4 36	9 12	19 53	16	6 37	0 51	heart	8 8	12
22	Th	7 23	4 37	9 14	19 40	17	7 35	1 35	belly	8 45	„
23	Fr	7 22	4 38	9 16	19 26	18	8 32	2 18	belly	9 28	„
24	Sa	7 21	4 39	9 18	19 12	19	9 29	3 0	belly	10 10	„
25	D	7 20	4 40	9 20	18 57	20	10 26	3 42	reins	10 52	13
26	M	7 19	4 41	9 22	18 42	21	11 24	4 25	reins	11 35	„
27	Tu	7 18	4 42	9 24	18 26	22	morn. 5	9	secrets	morn.	„
28	W	7 17	4 43	9 26	18 11	☾	0 28	5 55	secrets	1 5	„
29	Th	7 15	4 45	9 30	17 55	24	1 32	6 44	secrets	1 54	14
30	Fr	7 14	4 46	9 32	17 38	25	2 35	7 36	thighs	2 46	„
31	Sa	7 12	4 48	9 36	17 22	26	3 36	8 31	thighs	3 41	„

Handwritten notes on the right margin, including numbers 21, 22, and 23, and some illegible text.

I Month.



h d. 3h 4m mrrn

C's place.	High water	High S
ecrets	3	23 4
ighs	4	15 "
ighs	5	10 5
nees	6	8 "
nees	7	8 6
egs	8	8 "
egs	9	6 7
et	10	2 "
et	10	56 8
ead	11	49 "
ead		eve "
ead	0	40 9
eck	1	30 "
eck	2	20 "
ms	3	10 10
ms	4	0 "
east	4	50 11
east	5	39 "
east	6	28 "
art	7	15 "
art	8	8 12
lly	8	45 "
lly	9	23 "
lly	10	10 "
ns	10	52 13
ns	11	35 "
crets		morn. "
rets	1	5 "
rets	1	54 14
ghs	2	46 "
ghs	3	41 "

*19* my char ...

*20* The Doctor's ...  
*Hope ...*

*write my ...*

*23* ...



Personal Expenses

Three yards ribbon - white	1	0	9
ribbons	"	5	3
and			4
ribbon sewing silk	4		3
more			6
Miss Templeman	2		1
Shoosings	8		"
in the 1/2 lb	1		"
Cotton etc	1		8
Miss Templeman	5		"
Net	4		6
Trimble	1		6
Bonnet	7		6
Ribbon	19		2
Manchester chief	6		"
Cap	19		"
Miss Templeman part board	11		10
Manchester chief	4		"
Miss Templeman	"		1
linen	"		6
12 yds of white tape of 2	2		"
straggled	07		6
Cotton	3		11
Miss Parkin	1		6
speckle lace	1		6
Veil	6		07
Cotton	1		6
13/3/4 Gros de Sepe to 5/16	3	15	= 9/2
Cap	1		6 = 3
Miss Templeman	"		5 = "
ribbon	1		1
	11		17 9/2

Winter.  
 Tho  
 The ev  
 And sp  
 The ve  
 On Ed  
 Now b  
 And th  
 Revolv  
 Lead d  
 Till ti  
 To he  
 Of Ch  
 Full Moor  
 DM | Hol  
 1  
 2 ♀ rise  
 3  
 D 2d Su  
 5 High  
 6 C per  
 7  
 8 Lucian  
 9  
 10 ♀ rise  
 D 1st Su  
 12 Low t  
 13  
 14 ♂ ☺  
 15  
 16 ♀ rise  
 17  
 D 2d Su  
 19 High  
 20 ☺ e  
 21  
 22 ♂ ☺  
 23  
 24  
 D 3d S  
 26  
 27 ♂ s  
 28 Low  
 29 K.  
 30 K.  
 31 K.

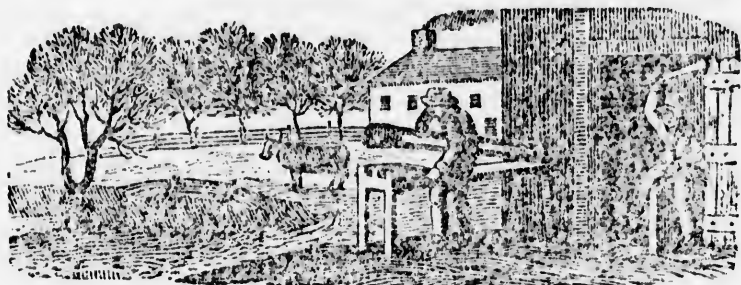
Winter. **JANUARY** begins on Thursday. 15

~~Thou, Nature! ever-changing, changest not—~~  
 The evening and the morning duly come—  
 And spring, and summer's heat, and winter's cold—  
 The very sun that look'd on Paradise,  
 On Eden's blooming bowers, and sinless man,  
 Now blazes in the glory of his power.  
 And thus the months shall come, and thus the years  
 Revolve ; and day, alternating with night,  
 Lead on from blooming youth to hoary age,  
 Till time itself grows old ; and Spring forgets  
 To herald Summer ; and the fearful blank  
 Of Chaos overspreads, and mantles all !

Full Moon 19th d. Sh. 3m. eve. | Last Quar. 28th d. 1h. 7m. morn.

DN	Holidays, Weather, &c.	FARMER'S CALENDAR.
1	Clear	At the commencement of a
2	♀ rises 4h 54m	wish you a year of prosperity;
3	<i>fine winter</i>	that the earth may yield you
D 2d Sun. af. Christmas.		her increase, and that you
5	High tides	may have joy, peace and plenty
6	☾ perigee. Epiphany.	in your habitations.
7	<i>long, cold,</i>	The cold weather is now
8	Lucian.	so nipping and eager, that
9	<i>and dark</i>	your cattle have appetites as
10	♃ rises 4h 13m	sharp as aquæ fortis, and
D 1st Sun. af. Epiph.		would, if they could, eat double
12	Low tides.	tenpenny nails. You may
13	<i>blustering.</i>	therefore lawfully take advan-
14	♂ ☉ ♀.	tage of this omnivorous dispo-
15	<i>a thaw,</i>	sition of the animals, and thus
16	♀ rises 5h 18m	get rid of your cut straw, and
17	<i>perhaps</i>	other fodder which is not of
D 2d Sun. af. Epiph.		the first quality. You must
19	High tides.	not however, carry your eco-
20	☉ enters ☿	nomony with regard to cattle
21	<i>rendered more</i>	diet, too far ; but let them
22	♂ ☉ ☿.	have roots, at least once a
23	<i>pleasant by</i>	day, by way of dessert to their
24	<i>sleighting.</i>	principal meal. Store ani-
D 3d Sun. af. Eph. Conv. St Paul		mals should have food in qua-
26		lity and quantity just suffici-
27	♃ sets 10h 17m. Duke Sussex b	ent to keep them thriving,
28	Low tides.	without fattening them. They
29	<i>colder.</i>	make no pretensions to gen-
29	K. Geo. IV. access. 1820.	tility, are remarkable for tea-
30	K. Char. I martyr.	
31	K. Geo IV procl. 1820	

Handwritten notes in the left margin:  
 2 = 9  
 5 = 3  
 1  
 3  
 6  
 1  
 " 8  
 " 6  
 6  
 6  
 2  
 " 10  
 " 1  
 6  
 " 6  
 = 11  
 = 6  
 = 6  
 = 6  
 = 7  
 = 6  
 = 7 1/2  
 = 3  
 = 11  
 9/12



New Moon 3d d. 10h 17m eve. | First Quar. 10th 3h 9m morn.

D	D	☉	☉	Days'	Sun's	☾	☾ R.	☾	☾'s	High	S
M	W	rises	sets	len'th	dec. S	A	& S.	south.	place.	water	sl
1	D	7 9	4 51	9 4	17 5	27 1	31 0	50 1	1	5	34
3	Tu	7 7	4 53	9 4	16 30	28 5	28 0	29 0	knees	6	39
4	W	7 5	4 54	9 50	16 12	1 6	5 ev.	28	legs	7	38
5	Th	7 4	4 55	9 52	15 54	2 7	14 1	25	feet	8	35
6	Fr	7 3	4 56	9 54	15 36	3 8	25 2	21	feet	9	31
7	Sa	7 2	4 57	9 56	15 17	4 9	36 3	15	head	10	25
8	D	7 1	4 59	9 58	14 58	5 10	47 4	8	head	11	18
9	M	6 59	5 1	10 2	14 39	6 11	57 5	0	neck	ev	6
10	Tu	6 58	5 2	10 4	14 19	7 12	morn. 5	51	neck	0	10
11	W	6 56	5 4	10 8	14 0	8 1	3 6	42	arms	1	1
12	Th	6 55	5 5	10 10	13 40	9 2	4 7	33	arms	1	52
13	Fr	6 53	5 7	10 14	13 20	10 2	59 8	23	breast	2	43
14	Sa	6 52	5 8	10 16	13 0	11 3	48 9	12	breast	3	33
15	D	6 51	5 9	10 18	12 39	12 4	31 9	59	breast	4	22
16	M	6 49	5 11	10 22	12 18	13 5	11 10	45	heart	5	9
17	Tu	6 48	5 12	10 24	11 57	14 5	47 11	30	heart	5	55
18	W	6 47	5 13	10 26	11 36	15 6	☉ rises.	morn.	belly	6	40
19	Th	6 45	5 15	10 30	11 15	16 6	18 0	14	belly	7	24
20	Fr	6 44	5 16	10 32	10 54	17 7	14 0	57	belly	8	0
21	Sa	6 42	5 18	10 36	10 32	18 8	11 1	39	reins	8	49
22	D	6 41	5 19	10 38	10 10	19 9	9 2	22	reins	9	32
23	M	6 39	5 21	10 42	9 48	20 10	8 3	6	secrets	10	16
24	Tu	6 38	5 22	10 44	9 25	21 11	9 3	51	secrets	11	1
25	W	6 36	5 24	10 48	9 4	22 11	morn. 4	38	secrets	11	48
26	Th	6 34	5 26	10 52	8 42	23 0	10 5	28	thighs	morn.	
27	Fr	6 33	5 27	10 54	8 19	24 1	10 6	21	thighs	1	31
28	Sa	6 31	5 29	10 58	7 56	25 2	10 7	16	knees	2	46

*12  
10 d. m.*

*23 d. m.*

*24 d. m.*

II Month.



3h 9m mrr.

's	High	S
co.	water	sl
4	50	14
5	39	"
6	39	"
7	38	"
8	35	"
9	31	"
10	25	15
11	18	"
ev	6	"
0	10	"
1	1	"
1	52	"
2	43	"
3	33	"
4	22	14
5	9	"
5	55	"
6	40	"
7	24	"
8	0	"
8	49	"
9	32	"
s 10	16	"
s 11	1	"
s 11	48	13
morn.	"	"
1	31	"
2	46	"

<sup>R</sup>  
10 draw a Bill for 66-13-07

23 Stephen Bamford here at 10/2 per Month

<sup>R</sup>  
24 done at Mr Robus

Expenses brought forward

	11 = 17 9/2
Shoes	" = 8
Mrs Templeton	" = 5
Stockings	" = 4
Ribbon	" = 6 - 3
Gloves	" = 2 = 6
Lace	" = " = 6
Ribbon, net &c &c	12 = 4
Mrs Templeton	2 = 6
Shoes	15 = "
Mr Lockyer for Hat	2 = 10 =
Wool Handkerchief	" = 4 = "
Leistmans Bill	3 = 18 = 2
Ribbon Hannah	" = 5 = "
Mrs Templeton	" = 3 = 9
Manuel	" = 5 = 3
Pharmacology	" = 2 = 6
Shoes	14 = 3
Handkerchief	1 = 1
Stockings	18 = "
Handkerchief	1 = 8 = "
Ribbon	" = 6 = "
Ribbon	1 = 6
Mrs Templeton	2 = 6
Lace	17 = 1
Manuel	6 =
Ribbon	6
Handkerchief	12 = 3
	29 = 8 = 1/2

Wint

Mu  
Bl  
Th  
Sp  
An  
Of  
O'  
A  
An  
Is

Full

DM

D 40

2 P

3 H

4 C

5 A

6 9

7

D 5

9 L

10

11

12 9

13

14 V

D 8

16

17

18

19

20

21

D

23

24

25

26

27

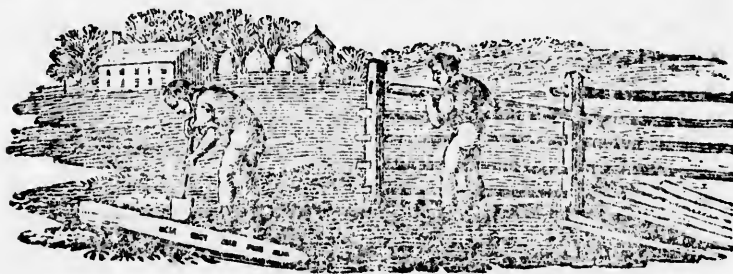
28

Muttering, the winds at eve with blunted point,  
 Blow, hollow-blustering, from the south. Subdued,  
 The frost revolves into a trickling thaw.  
 Spotted, the mountains shine, loose sleet descends,  
 And floods the country round. The rivers swell,  
 Of bonds impatient. Sudden from the hills,  
 O'er rocks and woods, in broad brown cataracts,  
 A thousand snow-fed torrents rush at once,  
 And where they rush, the wide-resounding plain  
 Is left one slimy waste.

Full Moon 18th d. 3h. 1m. aft. | Last Quar. 26th d. 4h. 6m. aft.

Day	Holidays, Weather, &c.	FARMER'S CALENDAR.
D 4th Sun. af. Epiph.		dy habits; and late breakfasts and
2 Purif. of B. V. Mary.		4 o'clock dinners will not be re-
3 High tides.		lished even by the best-bred short-
4 ☾ perigee.	<i>a storm</i>	horns that ever figured in the an-
5 Agatha.	<i>is near.</i>	nals of fashionable live stock.
6 ♀ rises 5h 41m		This is generally a very cold
7	<i>pleasant</i>	and inclement month, but there
D 5th Sun. af. Epiph.		are rational enjoyments to be ex-
9 Low tides. <i>for a day or two.</i>		perienced at all times, places and
10		seasons. You had better visit
11		your barns yourself, and not trust
12 ♀ rises 5h 44m		to Tom, Dick and Harry to fill
13	<i>blustering.</i>	the important office of commissary
14 Valentine.		of the Cattle Department, unless
D Septuagesima Sun.		you wish your cattle to become
16 ☽ ☾ ☿.	<i>may look out</i>	poor, and to have your hay wasted.
17	<i>for snow.</i>	Dress flax and hemp, let not your
18 ☺ enters ♋. ☾ apogee.		daughters want stock for the
19 ♀ stat.		spinning wheel, to keep them in-
20	<i>a thaw</i>	industrious, for one piece of hand-
21 ♀ rises 1h 53m. <i>with rain.</i>		some domestic manufacture will
D Sexagesima Sun.		go farther to establish their repu-
23 ☽ sets 10h 9m		tation than a whole winter's fro-
24 St Matthias. D. of Camb. b.		licking.—Sprinkle brine on your
25	<i>changeable</i>	coarse fodder, and give it to the
26 Low tides.		cattle before the spring opens—it
27	<i>more rain</i>	will then be useless except for lit-
28 ☽ ☺ ♀		ter.—If your threshing is not all
		done, lose no time in finishing it.

9/2  
 3  
 6  
 6  
 4  
 6  
 "  
 "  
 2  
 "  
 9  
 3  
 6  
 3  
 1  
 "  
 "  
 "  
 6  
 6  
 "  
 3  
 1/2



New Moon 5th d. 8h. 22m. morn. First Quar. 12th d. 4h. 35m. morn.

D	M	☉	☽	Days'	Sun's	☾	☾	R.	☾	☾'s	High	☉	
M	W	rises	sets	len <sup>th</sup>	dec. S	A	& S.	south.	place.	water	sl		
1	D	6 29	5 31	11 2	7 33	26	3	6 8	13	knees	3 23	13	
2	M	6 28	5 32	11 4	7 10	27	3	5 8	9	11	legs	4 21	12
3	Tu	6 27	5 33	11 6	6 47	28	4	4 5	10	10	legs	5 20	11
4	W	6 25	5 35	11 10	6 24	29	5	2 8	11	8	feet	6 18	10
5	Th	6 24	5 36	11 12	6 1	☉	sets	ev	5	feet	7 15	9	
6	Fr	6 23	5 37	11 14	5 38	1	7	26	1	1	head	8 11	8
7	Sa	6 21	5 39	11 18	5 15	2	3	37	1	57	head	9 7	11
8	D	6 19	5 41	11 22	4 51	3	9	45	2	51	neck	10 1	10
9	M	6 18	5 42	11 24	4 23	4	10	50	3	45	neck	10 55	9
10	Tu	6 16	5 44	11 28	4 4	5	11	51	4	39	arms	11 49	8
11	W	6 15	5 45	11 30	3 41	6	morn	5	31	arms	ev	41	10
12	Th	6 13	5 47	11 34	3 17	☾	0	56	6	23	arms	1 33	9
13	Fr	6 12	5 48	11 36	2 54	8	1	46	7	13	breast	2 23	8
14	Sa	6 10	5 50	11 40	2 30	9	2	40	8	1	breast	3 11	9
15	D	6 9	5 51	11 42	2 6	10	3	27	8	48	heart	3 58	8
16	M	6 7	5 53	11 46	1 43	11	4	2	9	33	heart	4 43	7
17	Tu	6 5	5 55	11 50	1 14	12	4	31	10	13	heart	5 28	6
18	W	6 4	5 56	11 52	0 55	13	4	57	11	1	belly	6 11	5
19	Th	6 2	5 58	11 56	0 32	14	5	25	11	44	belly	6 54	4
20	Fr	6 1	5 59	11 58	0 8	☉	rises.	morn.	reins	7 34	reins	7 34	3
21	Sa	5 59	5 1	12 2	0 15	16	7	17	0	27	reins	8 07	2
22	D	5 58	5 2	12 4	0 32	17	8	18	1	17	reins	8 21	1
23	M	5 56	5 4	12 3	1 2	18	9	20	1	57	secrets	9 6	0
24	Tu	5 54	5 6	12 12	1 25	19	10	19	2	43	secrets	9 53	0
25	W	5 52	5 7	12 14	1 47	20	11	16	3	32	thighs	10 42	0
26	Th	5 51	5 8	12 18	2 13	21	morn.	1	2	22	thighs	11 33	0
27	Fr	5 50	5 10	12 20	2 36	22	0	11	5	16	knees	morn.	1
28	Sa	5 48	5 12	12 24	3 0	☾	1	4	5	14	knees	1 21	5
29	D	5 47	5 11	12 23	3 22	24	1	51	7	7	knees	2 17	4
30	M	5 45	5 1	12 31	3 46	25	2	38	8	3	legs	3 13	3
31	Tu	5 43	5 17	12 34	4 10	26	3	28	9	0	legs	4 10	1

5<sup>th</sup>  
M  
6 ga  
J M  
A for

Month.

~~Month.~~

~~Month.~~

m.morn.

High  
water

	High	water	sl
3	23	B	
4	21	B	
5	20	"	
6	18	"	
7	15	"	
8	11	"	
9	7	"	
10	1	"	
11	55	"	
12	49	"	
13	41	"	10
14	33	"	
15	23	"	
16	11	"	9
17	58	"	
18	43	"	
19	28	"	
20	11	"	3
21	54	"	
22	34	"	
23	0	"	7
24	21	"	
25	6	"	
26	53	"	6
27	42	"	
28	33	"	
29	ra.	"	
30	21	"	5
31	17	"	
32	13	"	
33	10	"	4

5<sup>th</sup> June at Williams

th

6 January Packet arrives Letter from Major  
& Mrs Hope & Mr Bolcher, my dear Sarah  
& son born on the 8<sup>th</sup> of January



... .. 200  
 ... .. 1300  
 ... .. 200  
 ... .. 100  
 ... .. 200  
 ... .. 300  
 ... .. 200  
 ... .. 200  
 ... .. 200  
 ... .. 200  
 ... .. 200

**Spring.**

March  
 Whil  
 Destin  
 To e  
 Snows  
 Melt  
 Winter  
 Onw  
 Earlie  
 Now  
 'Till th  
 Wei

Full Moon

Day | Hol

1 | Quinqu.

2

3 | Shrove

4 | Ash W

5 | High t

6 | ♀ rises

7

8 | 1st Su

9

10

11

12 | Grego

13 | ♂ stat

14 | ♂ sets

15 | 2d Su

16 | ♀ rise

17 | St Pat

18

19

20 | ☉ ent

21 | Bened

22 | 3d Su

23

24 | ♀ rise

25 | Annun

26

27 | ♂ gr.

28 | ♀ stat

29 | 4th Su

30 | Low t

31 | ♀ stat

March! we welcome now thy reign,  
 While the early shoots appear,  
 Destined in fair Ceres' train,  
 To enrich the ripen'd year.  
 Snows that whiten'd o'er the lands,  
 Melt before the approaching ray;  
 Winter bids his grisly band,  
 Onward hold its wonted way.  
 Earlier from the glowing east,  
 Now the ruddy streaks appear,  
 'Till the sun in Aries placed,  
 Weighs in equal scales the year.

Full Moon 29th d. 9h. 37m. morn. | Last Quarter 28th d. 3h. 5m. morn.

Day	Holidays, Weather, &c.	FARMER'S CALENDAR.
1	Quinquagesima or Shrove Sunday. St. David's Day.	If you have improved the sledging seasons you ought, your wood pile is now of respectable dimensions. Let it be cut, split, and snugly hoisted, before the busy season comes on; and take care that there is a suitable supply of oven wood. See that your farming utensils are in order; and attend to those little repairs and betterments of your premises, within doors and without, which may save unnecessary labour and trouble, and prevent the occasions of fretfulness and complaining among your household. Your fences will now require attention. Let your cattle be shut from the mowing fields as soon as the frost is out. Split and sharpen rail, and sharpen posts for fences; after your posts are sharpened you will be well set to work if you kindle a fire and burn the ends which are to be put in the ground, till the outside is turned as black as a bad man's character, which will make them last much longer than most sally-herry matters. The man, however, who said that they would last forever and ever, for he had tried it out and out, stretched the truth not a little.
2	<i>blustreing.</i>	
3	Shrove Tuesday.	
4	Ash Wednesday. 1st day Lent.	
5	High tides. ☾ per.	
6	☽ rises 5h 46m <i>frequent rains.</i>	
7	<i>looks like snow.</i>	
8	1st Sun. in Lent. ☽ ris. 1h 5m	
9	<i>very fine</i>	
10	<i>again</i>	
11	<i>for some days</i>	
12	Gregory Martyr. Low tides.	
13	☽ stat.	
14	☽ sets 10h 6m. <i>cloudy</i>	
15	2d Sun. in Lent. <i>and dull.</i>	
16	☽ rises 0h 37m	
17	St Patrick's Day. ☾ apogee	
18	<i>high winds</i>	
19	<i>an equinoctial storm</i>	
20	☉ enters ♍. ☾ ecl. invis.	
21	Benedict. High tides. <i>is at</i>	
22	3d Sun. in Lent. <i>hand.</i>	
23	<i>very cool nights</i>	
24	☽ rises 0h 4m.	
25	Annunc. of B. V. Mary.	
26	<i>but spring</i>	
27	☽ gr. elong.	
28	☽ stat. <i>is fast</i>	
29	4th Sun. in Lent. Mid. L. Sun	
30	Low tides. <i>advancing.</i>	
31	☽ stat.	



New Moon 3d d. 6h. 7m. aft. | First Quar. 10th d. 9h. 53m. eve.

D	D	☉	☉	Days	Sun's	☾	☾	☾	☾	High	☉
M	W	rises	sets	len'th	dec. N	A	& S.	south.	place.	water	sl
1	W	5 42	6 18	12 36	4 33	27 4	6 9	56	feet	5 6	4
2	Th	5 40	6 20	12 40	4 56	28 4	47 10	52	feet	6 2	„
3	Fr	5 39	6 21	12 42	5 19	● sets.	11 47	head	6 57	3	„
4	Sa	5 37	6 23	12 46	5 42	1 7	35 eve	42	head	7 52	„
5	D	5 36	6 24	12 48	6 5	2 8	45 1	38	neck	8 48	„
6	M	5 35	6 25	12 50	6 27	3 9	51 2	34	neck	9 44	„
7	Tu	5 34	6 26	12 52	6 50	4 10	54 3	38	arms	10 38	2
8	W	5 32	6 28	12 56	7 12	5 11	50 4	21	arms	11 31	„
9	Th	5 31	6 29	12 58	7 35	6 morn.	5 13	breast	ev	23	„
10	Fr	5 29	6 31	13 27	7 57	☾ 0	39 6	4	breast	1 8	1
11	Sa	5 27	6 33	13 68	19 8	1 22	6 52	breast	1 52	„	„
12	D	5 26	6 34	13 88	41 9	2 47	33	heart	2 38	„	„
13	M	5 24	6 36	13 129	3 10	2 40	8 23	heart	3 28	„	„
14	Tu	5 22	6 38	13 169	24 11	3 11	9 6	belly	4 8	0	„
15	W	5 21	6 39	13 189	46 12	3 40	9 49	belly	4 49	„	„
16	Th	5 20	6 40	13 2010	7 13	4 6	10 32	belly	5 36	F	„
17	Fr	5 13	6 42	13 2110	28 14	4 32	11 16	reins	6 18	0	„
18	Sa	5 17	6 42	13 2610	49 15	4 58	morn.	reins	6 59	1	„
19	D	5 15	6 45	13 3011	10 10	☉ rises.	0 1	secrets	7 31	„	„
20	M	5 14	6 46	13 3211	31 17	8 18	0 47	secrets	8 10	„	„
21	Tu	5 18	6 47	13 3411	51 18	9 17	1 36	thighs	8 40	„	„
22	W	5 11	6 49	13 3812	12 19	10 13	2 27	thighs	9 37	2	„
23	Th	5 10	6 50	13 4012	32 20	11 6	3 20	thighs	10 30	„	„
24	Fr	5 9	6 51	13 4212	51 21	11 58	4 14	knees	11 24	„	„
25	Sa	5 7	6 53	13 4613	11 22	morn.	5 9	knees	morn.	„	„
26	D	5 6	6 54	13 4813	31 31	☾ 0	46 6	4	legs	1 14	„
27	M	5 5	6 55	13 5013	50 24	1 28	6 59	legs	2 9	„	„
28	Tu	5 3	6 57	13 5414	9 25	2 37	53	feet	3 33	3	„
29	W	5 2	6 58	13 5614	27 26	2 45	3 47	feet	3 57	„	„
30	Th	5 0	7 0	14 014	46 27	3 19	9 40	head	4 50	„	„

*Handwritten notes on the right margin:*  
 12 M  
 14 M  
 15 M  
 16 M  
 17 M  
 18 M  
 19 M  
 20 M  
 21 M  
 22 M  
 23 M  
 24 M  
 25 M  
 26 M  
 27 M  
 28 M  
 29 M  
 30 M

.....



.....  
n.53m. eve.

	High	☉
e.	water	sl
5	64	
6	2	3
6	57	3
7	52	3
8	48	3
9	44	3
10	38	2
11	31	2
t ev	23	1
t 1	8	1
t 1	52	1
2	38	1
3	28	1
4	8	0
4	49	0
5	36	F
6	18	0
6	59	1
7	34	1
8	10	1
8	40	1
9	37	2
10	30	2
11	24	2
morn.		2
1	14	2
2	9	2
3	3	3
3	57	3
4	50	3

5<sup>th</sup> February Packet arrives Letter from  
Major Hope

12<sup>th</sup> March packet arrives Letter from Major  
Hope

14<sup>th</sup> April Packet arrives with Mr. Hope  
& Miss Derbigny John to live at eight  
Dollars per Month

12<sup>th</sup> Letter from Mrs Long

14<sup>th</sup> Letter from my Aunt

23<sup>rd</sup> James to live at 2 pounds per Month

Spring

~~~~~

The

W

The

Fa

His l

H

All c

A

And

Li

Secr

T

~~~~~

Full Mo

DM | E

1 | Tide

2 | ☾ p

3 | ☉ e

4 | St A

D | 5th S

6 |

7 | ♃ S

8 |

9 |

10 | Low

11 |

D | 6th

13 |

14 | ☾ a

15 | ♂ s

16 |

17 | Good

18 |

D | Eas

20 | Eas

21 | Eas

22 |

23 | StG

24 |

25 | StM

D | 1stS

27 |

28 | ♂

29 |

30 | ☾

The husbandman seizing his plough,  
 Walks round in the pride of his might ;  
 The drops of his masculine brow  
 Fall freely as dews of the night.  
 His home is the centre of rest,  
 His heart is the birth-place of joy ;  
 All creatures around him are blest  
 And praise is their sweetest employ.  
 And evening so calmly serene,  
 Like age in a holy decline,  
 Seems longing and lingering between  
 Two regions, with fervour divine.

Full Moon 19th d. 2h 8m morn. Last Quarter 28th d. 10h 41m eve.

DM Holidays, Weather, &c. FARMER'S CALENDAR.

1	Tides rise.	<i>grows much</i>	It is now time that farmers pay particular attention to all that is connected with their occupation. "He who trusts to chance for a crop, deserves none, and he generally has what he deserves." He that is negligent and sluggish in this month will be generally so throughout the year, and perhaps all his life time ; and a shabby farm is portentous of neglected morals, and inclination to idleness, tippling, and litigation. Come then, let us be busy with the plough that the earth may be thoroughly stirred. No matter how much your ground is tilled with this instrument, more especially if your manure should be short. House your sleighs and sleds, unless you prefer (as some do) to let them take the benefit of the sun and rain through the season. If your spring grain is not all sown, lose no time in getting it into the ground.
2	☾ perigee.	<i>finer.</i>	
3	☼ ecl. invis.		
4	St Ambrose.	High tides.	
D 5th	Sun. in Lent.	<i>now look out</i>	
6		<i>for rain.</i>	
7	♊ S 3h 53m		
8		<i>thunder.</i>	
9			
10	Low tides.		
11		<i>cold harsh winds.</i>	
D 6th	Sun. in Lent.	Palm Sun	
13			
14	☾ apogee.		
15	♂ sets 10h 3m	<i>becomes very</i>	
16		<i>mild with</i>	
17	Good Friday.	☼ ♀ <i>mild rains</i>	
18			
D	Easter Day.	High tides.	
20	Easter Monday.	☼ enters ♀	
21	Easter Tues.	<i>fine for the season</i>	
22			
23	St Geo.	K. Geo 4th b. d. kept	
24		<i>rain.</i>	
25	St Mark.	Ds. Glo. b. Low tides.	
D 1st	Sun af. Eas.	Low Sun ☼ ♀	
27		<i>cooler</i>	
28	♂ sets 10h		
29		<i>some showers</i>	
30	☾ perigee.		



New Moon 3d. 3h. 43m. mom. First Quar. 10th d. 3h. 22m. aft.

D	M	☉	☽	Days'	Sum's	☾	☾ R.	☾	☾'s	High	☽
	W	rises	sets	len'th	dec.N	A	& S.	south.	place.	water	r
1	Fr	4 59	7 1	14	2 15	4 28	3 54	10 34	head	5 44	☽
2	Sa	4 58	7 2	14	4 15	22 29	4 29	11 28	neck	6 38	☽
3	D	4 56	7 4	14	8 15	40 ●	sets	ev 23	neck	7 33	☽
4	M	4 55	7 5	14	10 15	58 1	8 40	1 17	arms	8 23	☽
5	Tu	4 54	7 6	14	12 16	15 29	9 45	2 13	arms	9 23	☽
6	W	4 53	7 7	14	14 16	32 3	10 36	3 7	breast	10 17	☽
7	Th	4 52	7 8	14	16 16	49 4	11 23	3 58	breast	11 9	☽
8	Fr	4 51	7 9	14	18 17	5 5	morn.	4 49	breast	11 59	☽
9	Sa	4 49	7 11	14	22 17	21 6	0 45	36	heart	ev. 46	☽
10	D	4 48	7 12	14	24 17	37 2	0 40	6 23	heart	1 32	☽
11	M	4 47	7 13	14	26 17	52 8	1 12	7 6	belly	2 16	☽
12	Tu	4 45	7 15	14	30 18	8 9	1 42	7 49	belly	2 59	☽
13	W	4 44	7 16	14	32 18	23 10	2 10	8 31	belly	3 41	☽
14	Th	4 43	7 17	14	34 18	37 11	2 37	9 14	reins	4 24	☽
15	Fr	4 43	7 17	14	34 18	52 12	3 59	59	reins	5 9	☽
16	Sa	4 42	7 18	14	36 19	6 13	3 33	10 45	secrets	5 55	☽
17	D	4 40	7 20	14	40 19	19 14	4 41	33	secrets	6 40	☽
18	M	4 39	7 21	14	42 19	33 2	☉ rises.	morn.	secrets	7 23	☽
19	Tu	4 38	7 22	14	44 19	46 16	8 18	0 23	thighs	8 3	☽
20	W	4 37	7 23	14	46 19	58 17	9 16	1 16	thighs	8 42	☽
21	Th	4 36	7 24	14	48 20	11 18	10 52	3 6	knees	9 22	☽
22	Fr	4 35	7 25	14	50 20	23 19	10 52	3 6	knees	10 16	☽
23	Sa	4 34	7 26	14	52 20	34 20	11 35	4 2	legs	11 12	☽
24	D	4 33	7 27	14	54 20	46 21	morn.	4 57	legs	morn.	☽
25	M	4 32	7 28	14	56 20	57 2	0 13	5 50	feet	1 0	☽
26	Tu	4 31	7 29	14	58 21	7 23	0 48	6 43	feet	1 53	☽
27	W	4 31	7 29	14	58 21	18 24	1 21	7 35	head	2 45	☽
28	Th	4 30	7 30	15	0 21	27 25	1 55	8 27	head	3 37	☽
29	Fr	4 29	7 31	15	2 21	37 26	2 30	9 19	neck	4 29	☽
30	Sa	4 28	7 32	15	4 21	46 27	3 8	10 12	neck	5 22	☽
31	D	4 27	7 33	15	6 21	55 28	3 50	11 5	neck	6 5	☽

*begin*  
*at*

*H M*  
*Mus*

*H*  
*L*

Month.



Begin washing at 10/ per Month with Mrs  
Murray

11<sup>th</sup> May Packet sent with Major Mope  
Mrs the Hamilton to be 20/ per Month

17<sup>th</sup> Murrel Married

2m. aft.

High  
water

5	34	0
6	38	"
7	33	"
8	28	"
9	23	"
10	17	4
11	9	"
11	59	"
ev.	46	"
1	32	"
2	16	"
2	59	"
3	41	"
4	24	"
5	9	"
5	55	"
6	40	"
7	23	"
8	3	"
8	42	"
9	22	"
10	16	"
11	12	"
morn.		"
1	0	3
1	53	"
2	45	"
3	37	"
4	29	"
5	22	"
5	5	"



Spring

“ Lo

flowers  
is come  
The gr  
ness an  
from t  
feather  
homage  
devotio  
by min  
breath

Full M

DM | I

1 | St P

2 | Hig

D | 3d S

4 | Bon

5 | ♂ s

6 | St J

7 | ♂ C

8

9 | ♀ S

D | 3d S

11 | ♀ s

12 | C a

13

14 | ♂

15

16

D | 4th

18 | ♀ S

19 | Dur

20 | ♂ C

21 | ☺ c

22 | Prs

23 | ♂

D | 5th

25

26 | C

27

28 | Asc

29 | K.C

30

31 | Sun

“Lo ! the winter is past, the rain is over and gone; the flowers appear on the earth, the time of the singing of birds is come, and the voice of the turtle is heard in our land.” The grandeur and beauty of the glorious Sun—the mildness and serenity of the balmy air—the flowers springing from the green earth—the lively animal creation—the feathered choir, hymning their Creator, and paying their homage in harmony—all invite man to join in the rational devotion, and improve the fragrant oblations of Nature, by mingling with the rising odours the more refined breath of praise.

Full Moon 18th 3h 34m aft. | Last Quar. 25th d.4h 5m aft.

DM	Holidays, Weather, &c.	FARMER'S CALENDAR.
1	St Philip & St James	In the 4th volume of the
2	High tides.	New England Farmer, p.284,
D 3d	Sun af. East. <i>rather</i>	is a communication signed
4	Bonaparte died 1821 <i>cool</i>	“A Subscriber” recommend-
5	♂ sets 2h 52m <i>but fine</i>	ing the use of copperas water,
6	St John Ev. <i>weather</i>	to preserve Indian corn from
7	♂ ☉ ♀.	the wire worm, from which
8	<i>frequent</i>	the following is extracted ;
9	♃ S 1h 54m <i>rains</i>	“ I used about 1½ pound of
D 3d	Sun. af. East. Low tides.	copperas in 3 pecks of corn.
11	☿ stat	I made the water warm, and
12	☾ apogee. <i>changeable</i>	soaked the corn full 48 hours
13	<i>but good</i>	before planting, putting in
14	♂ sets 9h 46m <i>planting</i>	copperas as we used it out.
15	<i>weather</i>	It is not easy to use too much
16		copperas.
D 4th	Sun. af. East Tides rise.	This preparation, the
18	♃ S 0h 56m <i>clouds</i>	writer says, “ I am confident
19	Dunstan <i>denote</i>	is a full and entire remedy a-
20	♂ ☉ ♀ <i>a storm</i>	gainst the wire worm, and al-
21	☉ enters ☐	so against birds, who will not
22	Prs of Homburg b. 1770	eat it after they have pulled
23	♂ sets 9h 37m <i>remarkably</i>	it up. I am even sanguine in
D 5th	Sun af. East. Rog. Sun	my belief that it is a preventive
25	<i>fine for</i>	against the ravages of
26	☾ per. <i>some days.</i>	the cut worm, for I could not
27		otherwise account for their
28	Ascens. Day. Holy Thurs.	not injuring my field, when
29	K. Charles II restored.	many of my neighbours ac-
30	<i>settled weather</i>	tually lost more of their fields
31	Sun. af. Ascens. Day.	and were obliged to replant.



New Moon 1st d. 1h. 35m. aft. First Quar. 9th d. 9h. 9m morn.

D	D	☉	☉	Days	Sun's	☾	☾	R.	☾	☾'s.	(High)	☉
M	W	rises	sets	len <sup>th</sup>	dec.	N	A	& S.	south.	place	water	F
1	M	4 27	7 33	15 6	22 3	☉	7	40	ev	0 arms	7	10 13
2	Tu	4 26	7 34	15 8	22 11	1	3	25	0	54 arms	8	4 42
3	W	4 25	7 35	15 10	22 19	2	9	17	1	47 breast	8	57
4	Th	4 25	7 35	15 10	22 26	3	10	4	2	38 breast	9	48
5	Fr	4 24	7 36	15 12	22 33	4	10	46	3	27 heart	10	37
6	Sa	4 24	7 36	15 12	22 39	5	11	19	4	13 heart	11	23
7	D	4 23	7 37	15 14	22 45	6	11	44	4	58 heart	ev	8
8	M	4 23	7 37	15 14	22 51	7	morn.	5	4	41 belly	0	51
9	Tu	4 22	7 38	15 16	22 56	☾	9	8	6	33 belly	1	34
10	W	4 22	7 38	15 16	23 1	9	0	36	7	6 reins	2	16
11	Th	4 22	7 38	15 16	23 5	10	0	54	7	49 reins	2	59
12	Fr	4 21	7 39	15 18	23 9	11	1	21	3	34 reins	3	44
13	Sa	4 21	7 39	15 18	23 13	12	1	53	9	20 secrets	4	30
14	D	4 21	7 39	15 18	23 16	13	2	28	10	10 secrets	5	20
15	M	4 20	7 40	15 20	23 18	14	3	11	11	2 thighs	6	12
16	Tu	4 20	7 40	15 20	23 21	15	3	58	11	56 thighs	7	6
17	W	4 20	7 40	15 20	23 23	☉	vises.	morn.		knees	7	50
18	Th	4 20	7 40	15 20	23 25	17	8	52	0	52 knees	8	35
19	Fr	4 20	7 40	15 20	23 26	18	9	41	1	50 legs	9	15
20	Sa	4 20	7 40	15 20	23 27	19	10	24	2	46 legs	9	56
21	D	4 20	7 40	15 20	23 27	20	11	6	3	41 feet	10	51
22	M	4 20	7 40	15 20	23 27	21	11	32	4	35 feet	11	45
23	Tu	4 20	7 40	15 20	23 26	☾	morn.	5	28	feet	morn.	
24	W	4 20	7 40	15 20	23 25	23	0	16	6	19 head	1	29
25	Th	4 20	7 40	15 20	23 24	24	0	46	7	10 head	2	26
26	Fr	4 20	7 40	15 20	23 22	25	1	21	8	2 neck	3	12
27	Sa	4 20	7 40	15 20	23 20	26	1	58	8	54 neck	4	4
28	D	4 20	7 40	15 20	23 18	27	2	36	9	47 arms	4	57
29	M	4 21	7 39	15 18	23 15	28	3	16	10	40 arms	5	50
30	Tu	4 21	7 39	15 18	23 11	29	3	47	11	32 breast	6	42

5. 11

27

Month.

monday



5 May Packet arrives Letter from Mrs. W. L.

9m morn.

	High	☉
	water	F
7	10	3
8	4	2
8	57	"
9	48	"
10	37	"
11	23	"
ev	8	"
0	51	1
1	34	"
2	16	"
2	59	"
3	44	"
4	30	0
5	20	"
6	12	3
7	6	0
7	50	"
8	35	1
9	15	"
9	56	"
10	51	"
11	45	2
morn.		
1	29	"
2	20	"
3	12	"
4	4	3
4	57	"
5	50	"
t 8	42	"

27 June Packet with Mrs. W. L.

Samme

At las  
Are in  
Head  
The s  
The h  
With  
Mean  
Some  
Deep  
To st  
Other  
And,  
Hold

Full Mo

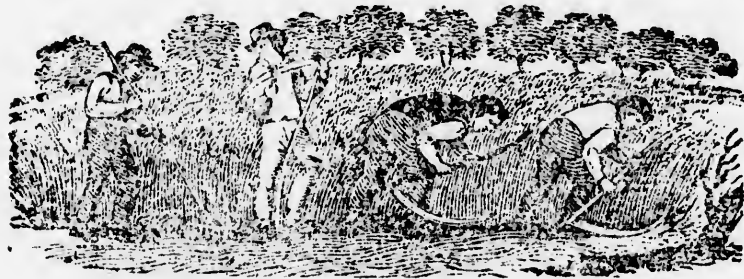
DN	Ho
1	High
2	2 S
3	
4	3 set
5	D. of
6	Low
D	Whit
8	Whit
9	Whit
10	
11	St. Ba
12	
13	
14	Trini
15	
16	
17	High
18	Battle
19	
20	Q se
D	1st St
22	Q st
23	Low
24	Nat. s
25	
26	
27	
D	2d St
29	St Pe
30	Fides

At last, of snowy white, the gather'd flocks  
 Are in the wattled pen innum'rous press'd,  
 Head above head: and rang'd in lusty rows,  
 The shepherds sit, and whet the sounding shears.  
 The housewife waits to roll her fleecy stores,  
 With all her gay drest maids attending round.  
 Meantime their joyous task goes on apace ;  
 Some mingling stir the melted tar, and some  
 Deep on the new-shorn vagrant's heaving side  
 To stamp his master's cipher ready stand ;  
 Others the unwilling wether drag along ;  
 And, glorying in his might, the sturdy boy  
 Holds by the twisted horns th' indignant ram.

Full Moon 17th d. 2h in morn. Last Quar. 23d d. 7h 43m eve.

DAYS, Holidays, Weather, &c.		FARMER'S CALENDAR.
1	High tides.	very
2	☾ s 11h 52m	
3		<i>fine</i>
4	♂ sets 9h 23m	
5	D. of Cambridge b.	
6	Low tides.	<i>colder with</i>
7	Whit Sunday.	
8	Whit Monday.	♁ gr. elong
9	Whit Tuesday.	<i>signs of</i>
10		<i>rain.</i>
11	St. Barnabas.	♂ sets 9h. 10m
12		<i>rather dry in</i>
13		<i>some places.</i>
14	Trinity Sunday.	
15		
16		
17	High tides. St Alban.	
18	Battle Waterloo, 1815.	
19		<i>more signs</i>
20	♀ sets 8h 12m	<i>of rain.</i>
21	D 1st Sun. af. Trin.	☉ enters ♄
22	♁ stat.	<i>much heat</i>
23	Low tides.	<i>with frequent</i>
24	Nat. St John, Bapt.	<i>showers.</i>
25		
26		<i>good weather</i>
27		<i>for</i>
28	D 2d Sun. af. Trin.	
29	St Peter.	<i>vegetation.</i>
30	Tides rise.	

I have more pork in my cellar (says neighbour Bragwell) than all the Armernick makers in the province. Fye upon your book-work, and larnin, and sich stuff. I want none of your nonsense. I shall farm it, as father and granthur did afore me ; your farmers by book are no farmers for me—Why there now, 'tother day, my wife, poor woman, undertook to make a pudding by the book; and she book'd it, and book'd it, and arter all never cook'd it. No, no, give me the man that prefers his hands to them ere books, and with a little, will bring a great deal to pass.—And these Armernick makers, what a strange mess of nonsense they send out every year. now I verily believe our Zac could make as good as the whole of their larned heads put together.



New Moon 1st d. Ch. 29m. morn. First Quar. 9th d. 2h. 17m. morn

D	D	☉	☉	Days'	Sun's	☾	☾ R.	☾	☾'s	High	S
M	W	rises	sets	len <sup>th</sup>	dec. N	A	& S.	south.	place.	water	sl
1	W	4 22	7 38	15 16	23 7	☉	7 52	ev 24	breast	7 34	3
2	Th	4 22	7 38	15 16	23 3	1	8 33	1 14	breast	8 24	4
3	Fr	4 22	7 38	15 16	22 59	2	9 10	2 2	heart	9 12	"
4	Sa	4 23	7 37	15 14	22 54	3	9 42	2 47	heart	9 57	"
5	D	4 23	7 37	15 14	22 48	4	10 11	3 31	belly	10 57	"
6	M	4 23	7 37	15 14	22 42	5	10 37	4 14	belly	11 41	"
7	Tu	4 24	7 36	15 12	22 36	6	11 0	4 56	belly	ev 24	"
8	W	4 24	7 36	15 12	22 30	7	11 26	5 39	reins	0 6	5
9	Th	4 25	7 35	15 10	22 23	8	11 52	6 22	reins	1 49	"
10	Fr	4 26	7 34	15 8	22 15	☾	morn.	7 7	secrets	2 32	"
11	Sa	4 26	7 34	15 8	22 8	10	0 23	7 54	secrets	3 17	"
12	D	4 27	7 33	15 6	21 59	11	0 59	8 44	thighs	3 4	"
13	M	4 28	7 32	15 4	21 51	12	1 39	9 37	thighs	4 49	"
14	Tu	4 29	7 32	15 4	21 42	13	2 34	10 33	thighs	5 35	"
15	W	4 29	7 31	15 2	21 33	14	3 38	11 31	knees	4 25	6
16	Th	4 30	7 30	15 0	21 23	15	rises	morn.	knees	7 20	"
17	Fr	4 31	7 29	14 58	21 13	☉	3 13	0 29	legs	8 10	"
18	Sa	4 32	7 28	14 56	21 3	17	3 58	1 27	legs	8 0	"
19	D	4 33	7 27	14 54	20 53	18	9 36	2 23	feet	9 47	"
20	M	4 33	7 27	14 54	20 41	19	10 9	3 18	feet	10 28	"
21	Tu	4 34	7 26	14 52	20 36	20	10 37	4 11	head	11 21	"
22	W	4 35	7 25	14 50	20 18	21	11 7	5 3	head	morn	"
23	Th	4 36	7 24	14 48	20 6	22	11 41	5 55	neck	1 5	"
24	Fr	4 37	7 23	14 46	19 54	24	morn.	6 47	neck	1 57	"
25	Sa	4 39	7 21	14 42	19 41	25	0 22	7 40	arms	2 50	"
26	D	4 40	7 20	14 40	19 28	26	1 4	8 32	arms	3 42	"
27	M	4 41	7 19	14 38	19 14	27	1 53	9 24	breast	4 34	"
28	Tu	4 43	7 18	14 36	19 1	28	2 47	10 16	breast	5 26	"
29	W	4 43	7 17	14 34	18 47	29	3 45	11 6	heart	6 16	"
30	Th	4 44	7 16	14 32	18 32	●	sets.	11 54	heart	7 4	"
31	Fr	4 45	7 15	14 30	18 18	1	17 37	ev 41	heart.	7 51	"

*Handwritten notes:*  
 2  
 2  
 10  
 23  
 Hope

Month.

monday



17m.mrn

	High	S
	water	sl
7	34	3
8	24	4
9	12	"
9	57	"
10	57	"
11	41	"
ev	24	"
0	65	"
1	49	"
2	32	"
3	17	"
3	4	"
4	49	"
5	35	"
4	25	6
7	20	"
8	10	"
8	0	"
9	47	"
10	28	"
11	21	"
morn	"	"
1	5	"
1	57	"
2	50	"
3	42	"
4	34	"
5	26	"
6	16	"
7	4	"
7	51	"

2 Mrs Belcher's Family from Boston

4 Mrs Belchers comes to us

10<sup>th</sup> June Packet arrives Sellers from Major Hope & Mrs Sarah Lewis

23 Mrs Belcher's come to us



Summe

Whe  
And  
The  
Shav  
Of a  
And  
Whi  
The  
But  
Th'  
His  
And  
In r  
And

Full M

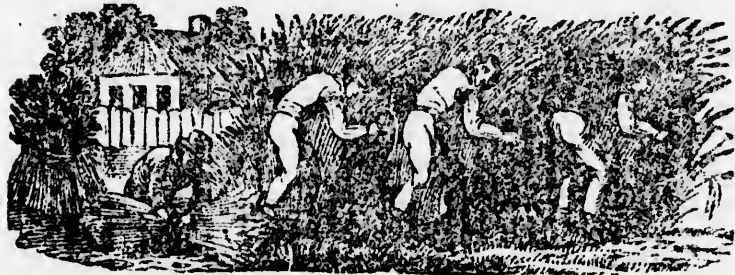
DM	
1	♂
2	Vis
3	♀
4	
D	3d
6	♂
7	♀
8	Lo
9	
10	♂
11	
D	th
13	♂
14	
15	Sw
16	♀
17	Dr
18	♂
D	5th
20	♀
21	
22	Lo
23	♂
24	
25	St
D	6th
27	♂
28	T
29	♀
30	
31	♂

Summer. JULY begins on Wednesday. 27

When the fresh spring in all her state is crown'd,  
 And high luxuriant grass o'erspreads the ground,  
 The labourer with a bending scythe is seen,  
 Shaving the surface of the waving green ;  
 Of all her native pride disrobes the land,  
 And meads lays waste before his sweeping hand ;  
 While with the mounting sun the meadow glows,  
 The fading herbage round he loosely throws :  
 But, if some sign portend a lasting shower,  
 Th' experienc'd swain foresees the coming hour ;  
 His sun-burnt hands the scattering fork forsake,  
 And ruddy damsels ply the saving rake ;  
 In rising hills the fragrant harvest grows,  
 And spreads along the field in equal rows.

Full Moon 16th d 10h 28m morn | Last Quar. 23d d. 2h 6m morn  
 New Moon 30th d. 1h 25m aft.

DM	Holidays, Weather, &c.	FARMER'S CALENDAR.
1	♂ ☾ ♀. <i>fine weather</i>	
2	Visit. B. V. Mary. Full tides	This is a busy month, but
3	♀ sets 8h 22m. <i>for the</i>	the provident farmer finds no
4	<i>hay makers.</i>	difficulty in getting through
D	3d Sun. af. Trin. ♂ ☉ ♀.	it, without any unnecessary
6	☾ apogee.	waste, by the hurry and con-
7	♃ sets 1h 56m. <i>appearance</i>	fusion of his business. He
8	Low tides. <i>of rain</i>	pays his hands well, keeps
9		them well, treats them well,
10	♂ sets 8h 18m.	and <i>works</i> them well ; conse-
11	<i>rather dull.</i>	quently his work goes on re-
D	4th Sun. af. Trin.	gular and briskly : his hay
13	♂ ♀ ♃.	and grain are quickly secur-
14	<i>signs of</i>	ed ; and the evening of his
15	Swithin.	harvest-home brings joy to
16	♀ stat. <i>becomes</i>	him and his family. Have a
17	Dr. Watts b. 1674. High tides	care that you do not drink too
18	☽ perigee. <i>finer.</i>	much cold water when heat-
D	5th Sun. af. Trin.. K. Geo. 4th	ed ; much liquor of any kind
20	♀ sets 8h 20m. [crown'd 1821]	weakens the stomach, and
21	<i>much finer.</i>	impairs the general vigor of
22	Low tides. <i>for hay making</i>	the body. Make your hay so
23	☉ enters ♍.	dry as to prevent its heating ;
24	<i>changeable</i>	but look out that you do not
25	St James. Dog days begin.	make it a mere parched straw
D	6th Sun. af. Trin. St. Anne.	without any of its natural
27	♂ ☉ ♃ <i>some rain</i>	juices. Cut close and even
28	Tides rise. <i>with</i>	at the bottom, for remember
29	♃ stat. <i>thunder</i>	that an inch at the bottom
30		outweighs many at the top.
31	♂ ☉ ♃.	



First Quar. 7th d. 5h. 20m. aft. Full Moon 14th d. 5h 42m aft.

D	D	☉	☉	Days	Sun's	☾	☾ R.	☾	☾'s	High	S
M	W	rises	sets	len'th	dec.N	A	& S.	south.	place.	water	sl
1	Sa	4 46	7 14	14 28	18 3	2	8 11	1 26	belly	8 36	6
2	D	4 47	7 13	14 26	17 47	3	8 42	2 9	belly	8 19	"
3	M	4 48	7 12	14 24	17 32	4	9 10	2 52	belly	9 2	"
4	Tu	4 50	7 10	14 20	17 16	5	9 38	3 34	reins	10 44	"
5	W	4 51	7 9	14 18	17 0	6	10 6	4 17	reins	11 27	"
6	Th	4 52	7 8	14 16	16 44	7	10 34	5 0	secrets	ev. 10	"
7	Fr	4 53	7 7	14 14	16 27	8	11 6	5 46	secrets	0 56	5
8	Sa	4 54	7 6	14 12	16 10	9	11 44	6 34	secrets	1 44	"
9	D	4 55	7 5	14 10	15 53	10	morn. 7	25	thighs	2 35	"
10	M	4 57	7 3	14 6	15 35	11	0 31	8 19	thighs	3 29	"
11	Tu	4 58	7 2	14 4	15 18	12	1 21	9 15	knees	4 25	"
12	W	4 59	7 1	14 2	15 0	13	2 18	10 13	knees	5 25	"
13	Th	5 0	7 0	14 0	14 42	14	3 24	11 11	legs	6 21	"
14	Fr	5 2	6 58	13 56	14 23	☉	rises. morn.		legs	7 19	4
15	Sa	5 4	6 56	13 52	14 5	16	7 24	0 9	feet	8 0	"
16	D	5 5	6 55	13 50	13 46	17	8 21	7 7	feet	8 46	"
17	M	5 6	6 54	13 48	13 27	18	8 38	2 3	head	9 32	"
18	Tu	5 7	6 53	13 46	13 7	19	9 14	2 58	head	10 13	"
19	W	5 9	6 51	13 42	12 48	20	9 51	3 52	neck	11 2	3
20	Th	5 10	6 50	13 40	12 28	21	10 33	4 46	neck	11 56	"
21	Fr	5 11	6 49	13 38	12 8	☾	11 17	5 39	arms	morn.	"
22	Sa	5 13	6 47	13 34	11 48	23	morn. 6	32	arms	1 42	"
23	D	5 14	6 46	13 32	11 28	24	0 47	25	arms	2 35	2
24	M	5 15	6 45	13 30	11 8	25	0 49	8 17	breast	3 27	"
25	Tu	5 17	6 43	13 26	10 47	26	1 38	9 7	breast	4 17	"
26	W	5 18	6 42	13 24	10 26	27	2 31	9 56	heart	5 6	"
27	Th	5 20	6 40	13 20	10 5	28	3 30	10 43	heart	5 53	1
28	Fr	5 21	6 39	13 18	9 44	29	4 32	11 28	heart	6 38	"
29	Sa	5 22	6 38	13 16	9 23	●	sets ev	12	belly	7 22	"
30	D	5 24	6 36	13 12	9 1	1	7 15	0 55	belly	8 50	0
31	M	5 26	6 34	13 8	8 40	2	7 41	1 38	reins	8 48	1

10  
11  
12  
17  
23  
24

month.



10<sup>th</sup> July Packet arrive letters from  
 Mr Hope & Mr Loxbury  
 12<sup>th</sup> Hannap to live 20<sup>th</sup> per Month

17<sup>th</sup> game Keith to live seven Dollars a  
 Month

23<sup>rd</sup> August Packet with Mr  
 Hope

24<sup>th</sup> the Bellamy base as

42m aft.

High water	S	st
8	36	6
8	19	"
9	2	"
10	44	"
11	27	"
ev.	10	"
0	56	5
1	44	"
2	35	"
3	29	"
4	25	"
5	25	"
6	21	"
7	19	4
8	0	"
8	46	"
9	32	"
10	13	"
11	2	3
11	56	"
morn.	"	"
1	42	"
2	35	2
3	27	"
4	17	"
5	6	"
5	53	1
6	38	"
7	22	"
8	50	"
8	48	"

**Summa**

Natu  
Bene  
In a  
One  
Soft  
In m  
Who  
Ye f  
Bre  
As l

**Last Q**

DM	
1	Lan
D	7th
3	C
4	
5	7
6	Tr
7	Na
8	
D	8th
10	St
11	6
12	K
13	G
14	H
15	C
D	9th
17	
18	8
19	
20	
21	D
22	D
D	
24	S
25	
26	
27	
28	S
29	
D	
31	

Nature, attend ! join every living soul,  
 Beneath the spacious temple of the sky,  
 In adoration join ; and, ardent raise  
 One general song, to HIM, who rules on high !  
 Soft roll your incense, herbs, and fruits, and flowers,  
 In mingled clouds, to HIM, whose sun exalts,  
 Whose breath perfumes you, and whose pencil paints.  
 Ye forests bend, ye harvests wave to HIM ;  
 Breathe your still song into the reaper's heart,  
 As home he goes beneath the joyous moan

*Thompson varied.*

Last Quar. 21st d. Sh. 4ln. eve | New Moon 29th d. 4h. 4ln. morn.

DM	Holidays, Weather, &c.	FARMER'S CALENDAR.
1	Lammas Day. ♀ sets 8h 11m	Now comes in glorious profusion, the source of the farmer's riches. You now see the chief object of your culture and attention, waiting only to be gathered by your hand. Who can view a field of corn without his soul expanding with thankfulness ?
D	7th Sun. af. Trin.	
3	☾ apogee. <i>fine for a few days.</i>	Experience should have taught you before this, that order and neatness are of the first importance. Let me recommend to some of you a little attention to the state of your door yards. Some farmers keep their <i>fields</i> neat and in order, and at the same time suffer their door-yards to be the receptacle of every unsightly, cumbersome and offensive article which the whole farm can furnish. To prevent vexation, and to save what you raise, look well to your fences ; it is as much a duty to <i>save</i> a crop, as to raise one.
4	☿ sets 11h 52m.	
6	Trans. of our Lord.	He that has health has little else to wish for ; and if you want it, <i>rise early.</i>
7	Name of Jesus. Low tides.	
8	☾ <i>rain</i>	
D	8th Sun. af. Trin.	
10	St. Lawrence. <i>with thunder and perhaps lightning</i>	
11	♂ ♀ ♃.	
12	K. Geo. 4th b. 1762.	
13	Gunpowder invented 1380.	
14	High tides.	
15	☾ perigee.	
D	9th Sun. af. Trin.	
17	☾ ☽ ☿ <i>cooler and very fine.</i>	
18	♂ ☽ ☿	
19	☾ ☽ ☿ <i>warm.</i>	
21	D. of Clarence b. 1785.	
22	Low tides. <i>high winds</i>	
D	10th Sun. af. Trin. ☽ en. ♀	
24	St. Bartholomew. <i>showers in many places</i>	
25	☾ ☽ ☿	
26	☿ sets 10h 40m	
27	☾ ☽ ☿	
28	St Augustine. Higher tides.	
29	St. John Bapt. beheaded.	
D	11th Sun. af. Trin. ☽ ☽ ☿	
31	♂ ☾ ♀. <i>very pleasant.</i>	



First Quar. 6th d. 7h. 46m. morn | Full Moon 13th d. 2h. 15m. morn.

D	D	☉	☽	Days	Sun's	☾	☾ R.	☾	☾'s	High	☽
M	W	rises	sets	len'th	dec.N	A	& S.	south.	place.	water	r
1	Tu	5 27	6 23	13 6	8 18	3 8	10 2	21	reins	9 31	0
2	W	5 29	6 31	13 27	5 6	4 8	4 4	3 4	reins	10 14	„
3	Th	5 31	6 29	12 58	7 34	5 9	19 3	49	secrets	10 59	1
4	Fr	5 32	6 28	12 56	7 12	6 9	57 4	55	secrets	11 45	„
5	Sa	5 33	6 27	12 54	6 50	7 10	38 5	24	thighs	ev 34	„
6	D	5 35	6 25	12 50	6 27	8 11	23 6	15	thighs	1 25	2
7	M	5 36	6 24	12 48	6 59	9 morn.	7 8	8	knees	2 18	„
8	Tu	5 37	6 23	12 46	5 42	10 0	12 8	4	knees	3 14	„
9	W	5 39	6 21	12 42	5 20	11 1	12 9	1	knees	4 11	3
10	Th	5 40	6 20	12 40	4 57	12 2	19 9	58	legs	5 8	„
11	Fr	5 42	6 18	12 36	4 34	13 3	32 10	56	legs	6 6	„
12	Sa	5 43	6 17	12 34	4 11	14 4	52 11	53	feet	7 3	1
13	M	5 45	6 15	12 30	3 48	☉ rises.	morn.	feet	7 46	„	2
14	D	5 46	6 14	12 28	3 25	16 7	16 0	50	head	8 31	„
15	Tu	5 48	6 12	12 24	3 2	17 7	53 1	46	head	9 1	„
16	W	5 49	6 11	12 22	2 39	18 8	23 2	42	neck	9 52	„
17	Th	5 51	6 9	12 18	2 16	19 9	16 3	38	neck	10 48	6
18	Fr	5 52	6 8	12 16	1 53	20 10	3 4	33	arms	11 43	„
19	Sa	5 54	6 6	12 12	1 29	☾	10 55	5 28	arms	morn.	„
20	D	5 56	6 4	12 8	1 6	22 11	51 6	21	breast	1 31	7
21	M	5 57	6 3	12 6	0 43	23 morn.	7 13	breast	2 23	„	„
22	Tu	5 59	6 1	12 2	0 19	24 0	46 8	2	heart	3 12	„
23	W	6 0	6 0	12 0	0 3	25 1	42 8	50	heart	4 0	8
24	Th	6 2	5 58	11 56	0 27	26 2	38 9	36	heart	4 46	„
25	Fr	6 3	5 57	11 54	0 50	27 3	36 10	20	belly	5 30	„
26	Sa	6 5	5 55	11 50	1 13	28 4	33 11	3	belly	6 13	9
27	D	6 6	5 54	11 48	1 37	☉ sets.	11 46	reins	6 56	„	„
28	M	6 8	5 52	11 44	2 0	1 6	17 ev	29	reins	7 39	„
29	Tu	6 10	5 50	11 40	2 24	2 6	43 1	12	reins	8 22	10
30	W	6 11	5 49	11 34	3 17	3 7	13 1	56	secrets	9 6	„

*16 Am*

*29 Am*

*30 Edm*  
*Mo*

Month

1812



am.mrn.

High water

31	0
0	14
0	59
1	45
v	34
	25
	18
	14
	11
	8
	6
	3
	46
	31
	1
	52
0	48
1	43
norn.	
	31
	23
	12
	0
	46
	30
	13
	56
	39
	22
	6

<sup>th</sup>  
 16 August Packet arrives Letter from  
 Mrs & Miss Ellice

<sup>th</sup>  
 29 Leave Town for Windsor

30<sup>th</sup> Edward to live at seven Dollars a  
 Month



Autumn

Fin  
Sept  
For  
And  
See,  
See,  
Pom  
And  
The  
And  
Borr  
Dow

Last Qu

nm	H
1	Gile
2	♀ s
3	
4	
5	
D	12th
7	2 s
8	Nat
9	
10	Dog
11	Hig
12	C P
D	(St)
14	Hol
15	Hig
16	
17	
18	
19	
D	14t
21	St
22	
23	☉
24	
25	♂
26	St
D	15
28	
29	St
30	St

Autumn: SEPTEMBER begins on Tuesday. 31

“ First of the months in sober Autumn’s train,  
 September comes and glads the rural swain ;  
 For now the heats of burning Summer die,  
 And finer breezes fan a cooler sky.  
 See, smiling Ceres waves the yellow fields,  
 See, blushing Bacchus, copious vintage yields ;  
 Pomona laughing, pendent globes unveils ;  
 And jocund Vesta drinks the mellowing gales.  
 The shortened day now meets the equal night,  
 And silver dews deck all the fields in white ;  
 Borne by her staff, dame Nature walks reclin’d,  
 Downwards she tends and leaves her gifts behind.

Last Quar. 19th d. 7h. 22m. eve. | New Moon 27th d. 9h. 49m. eve

DM	Holidays, Weather, &c.	FARMER'S CALENDAR.
1	Giles. <i>very fine</i>	This is a season of rejoicing,
2	♀ sets 7h 39m <i>for</i>	for now the farmer begins to realize the profit of his
3		labour. He sees that he has
4	<i>travelling.</i>	not tugged and toiled for
5		nought. His fields are
D	12th Sun. af. Trin. Low tides	crowned with plenty ; Pro-
7	♂ sets 9h 58m <i>evenings</i>	vidence has loaded him with
8	Nat. of B. V. Mary. <i>and</i>	blessings ; and cheerfulness
9	<i>mornings</i>	and songs of joy echo far and
10	Dog days end. <i>become</i>	near. But mind ye my friends
11	High tides. <i>cooler, and</i>	how the largest and heaviest
12	☾ perigee.	and finest ears of corn bend
D	13th Sun. af. Trin. ☽ ecl. vis.	down because of the solidity
14	Holy Cross. <i>reminds us</i>	and richness of their treasure
15	High tides.	while those that are poor, light
16	<i>that a thicker</i>	and worthless, raise up their
17	<i>garment is</i>	empty heads, overtopping all
18	<i>necessary.</i>	others throughout the field.
19		So have I seen a popinjay
D	14th Sun. af. Trin.	in shape of man, “without
21	St Matthew. ♂ sets 9h 12m	knowledge, virtue or decency,
22	<i>a storm is</i>	hold up his brainless scull, and
23	☉ enters ♌ <i>approaching</i>	with contempt look down upon
24		those, “whose shoes latch-
25	♂ ris. 4h 57m <i>fine</i>	et he is unworthy to unloose”
26	St Cyprian. ☾ apogee.	—But so it is, and so it will
D	15th Sun. af. Trin. ☽ ecl. invis.	be, for farmer Simpkins says
28	<i>for a few days.</i>	there must be some mullen
29	St Michael. Q. of Wir. b.	stalks in every thing.
30	St Jerome. ♂ sets 8h 45m	



First Quar. 5th d. 7h. 36m eve. Full Moon 12th d. 11h. 15m. fore.

D	D	☉	☉	Days'	Sum's	☾	☾ R.	☾	☾'s.	High	☉	
M	W	rises	sets	len'th	dec. S	A	& S.	south.	place	water	F	
1	Th	6 13	5 47	11 34	3 10	47	47	2 42	secrets	9 52	10	
2	Fr	6 14	5 46	11 32	3 34	58	26	3 29	thighs	10 39	11	
3	Sa	6 16	5 44	11 28	3 57	69	12	4 19	thighs	11 29	"	
4	D	6 17	5 43	11 26	4 20	710	4	5 10	thighs	eve 20	"	
5	M	6 19	5 41	11 22	4 43	11	26	4	knees	1 14	12	
6	Tu	6 20	5 40	11 20	5 7	9	morn.	6 58	knees	2 8	"	
7	W	6 22	5 38	11 16	5 30	10	57	53	legs	3 3	"	
8	Th	6 23	5 37	11 14	5 53	11	13	8 49	legs	3 59	"	
9	Fr	6 25	5 35	11 10	6 15	12	25	9 44	feet	4 54	13	
10	Sa	6 26	5 34	11 8	6 38	13	39	10 40	feet	5 50	"	
11	D	6 27	5 33	11 6	7 1	14	4	54 11	36	head	6 46	"
12	M	6 29	5 31	11 2	7 24	☉	rises.	morn.	head	7 32	"	
13	Tu	6 30	5 30	11 0	7 46	16	6	28 0	33	neck	8 2	14
14	W	6 32	5 28	10 56	8 9	17	7	12 1	30	neck	8 47	"
15	Th	6 34	5 26	10 52	8 31	18	7	59 2	27	arms	9 37	"
16	Fr	6 35	5 25	10 50	8 53	19	8	50 3	24	arms	10 34	"
17	Sa	6 37	5 23	10 46	9 15	20	9	45 4	19	breast	11 29	15
18	D	6 38	5 22	10 44	9 37	21	10	43 5	13	breast	morn.	"
19	M	6 40	5 20	10 40	9 59	☾	11	44 6	4	breast	1 14	"
20	Tu	6 41	5 19	10 38	10 20	23	morn.	6 53	heart	2 3	"	
21	W	6 43	5 17	10 34	10 42	24	0	38 7	40	heart	2 50	"
22	Th	6 44	5 16	10 32	11 3	25	1	34 8	25	belly	3 35	"
23	Fr	6 46	5 14	10 28	11 24	26	2	30 9	8	belly	4 18	16
24	Sa	6 47	5 13	10 26	11 45	27	3	29 9	51	belly	5 1	"
25	D	6 48	5 12	10 24	12 6	28	4	28 10	33	reins	5 43	"
26	M	6 50	5 10	10 20	12 27	29	5	26 11	16	reins	6 26	"
27	Tu	6 51	5 9	10 18	12 47	☉	sets	ev.	0	secrets	7 10	"
28	W	6 53	5 7	10 14	13 8	15	57	0 45	secrets	7 55	"	
29	Th	6 54	5 6	10 12	13 28	26	36	1 32	secrets	8 42	"	
30	Fr	6 55	5 5	10 10	13 47	37	18	2 21	thighs	9 31	"	
31	Sa	6 57	5 5	10 10	14 7	48	5	3 12	thighs	10 22	"	

2 7c  
14  
21  
X M

X Month

.....



.....  
.15m. fore.

	High water	☉ F
9	52	10
10	39	11
11	29	"
eve	20	"
1	14	12
2	3	"
3	3	"
3	59	"
4	54	13
5	50	"
6	46	"
7	32	"
8	2	14
8	47	"
9	37	"
10	34	"
11	29	15
morn.	"	"
1	14	"
2	3	"
2	50	"
3	35	"
4	18	16
5	1	"
5	43	"
6	26	"
7	10	"
7	55	"
8	42	"
9	31	"
10	22	"

2 return from Hindier

14 Catherine Boman to me 20/ per Month

21 October Packet sails with Mr Nope  
& Mr Desbrisay.

Autumn

Behol

In dus

Save

Noug

He k

He st

Infes

When

His h

Robu

To ev

Serer

And u

Last Qua

DM | Ho

1

2

3 ♀ se

D 16th

5 Low

6

7

8 ♀ se

9 St D

10 Tide

D 17th

12 ♀ st

13

14

15

16

17 ♂ st

D 18th

19 Low

20

21

22 ♂ ri

23 ☉ er

24 ☾ ap

D 19th

26 ☐ ☉

27 Tide

28 St S

29

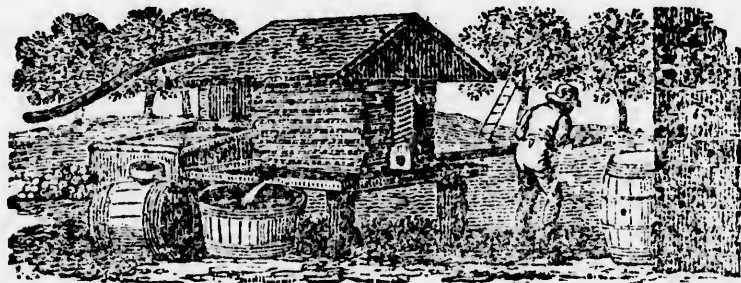
30 ♀ se

31

Behold the labourer of the glebe who toils  
 In dust, in rain in cold and sultry skies ;  
 Save but the grain from mildews and the flood,  
 Nought anxious he what sickly stars ascend.  
 He knows no laws by Esculapius given ;  
 He studies none. Yet him nor midnight fogs  
 Infest, nor those evenom'd shafts that fly  
 When rabid Sirius fires th' autumnal noon,  
 His habit pure with plain and temperate meals,  
 Robust with labour and by custom steel'd  
 To every casualty of varied life ;  
 Serene he bears the peevish eastern blast,  
 And uninfected breathes the mortal south.

Last Quar. 19th d. 10h. 17m fore. | New Moon 27th d. 3h. 31m. aft.

DM	Holidays, Weather, &c.	FARMER'S CALENDAR.
1		<i>signs of</i> Come, my lads, we'll now
2		<i>rain which</i> put things in order to give
3	♀ sets 7h 8h	<i>may</i> 'em the farmers concert!—
D	16th Sun. af. Trin.	Let the cider-mill scream the
5	Low tides.	<i>terminate in</i> treble—Dick and Joe shall
6		slambang the tenor with their
7		<i>a cold storm.</i> flails—Zachery and Ichabod
8	♃ sets 8h 19m	will rattle a thorough bass,
9	St Denys.	with the winnowing mill,
10	Tides higher.	<i>rain</i> while Ben at the ploughing
D	17th Sun. af. Trin. ☾ per.	team, keeps up a fundamental
12	♃ stat.	<i>very high tides</i> counter, with whoe haw, back
13		star, gee up bright, &c.
14		<i>begins to feel</i> Select your seed corn as
15		<i>a little</i> you gather it. Do not leave
16		<i>like winter.</i> your potatoes exposed long
17	♃ stat.	to the sun and air after gath-
D	18th Sun. af. Trin. St Luke.	ering them. Gather in your
19	Low tides.	roots, and throw up your gar-
20		<i>cold night</i> den into ridges.
21		<i>but fine.</i> Set the boys and girls to
22	♂ rises 4h 47m	work, to husk out the corn,
23	☉ enters ♎.	and not go the trouble, waste
24	☾ apogee.	<i>sunny days</i> and expense of a husking fro-
D	19th Sun. af. Trin. StCrispin	lic ; for if you do, the whole
26	☐ ☉ ♃	neighbourhood, far and near,
27	Tides rise.	must be invited, and away
28	St Simon & StJude. ♂ ☉ ♃	goes one of the boys mounted
29		<i>a storm</i> on the old mare, for rum, that
30	♀ sets 7h 8m	will be to your cost full as
31		much as your corn is worth.



First Quar. 4th d. 5h.37m. morn | Full Moon 10th d. 9h.31m. eve.

D	M	☺	☾	Days	Sun's	☾	☾ R.	☾	☾'s	High	☺	
M	W	rises	sets	month	dec.S	A	& S.	south.	place.	water	F	
1	D	6 58	5 2	10	4 14	26	5 8	57	4	knees	11 14	16
2	M	7 0	5 0	10	0 14	46	6 9	55	4	knees	ev 7	11
3	Tu	7 1	4 59	9	58 15	57	7 10	59	5	legs	1 1	11
4	W	7 3	4 57	9	59 15	23	☽ morn.	6	44	legs	1 54	11
5	Th	7 4	4 56	9	52 15	42	9 0	10	7	feet	2 47	11
6	Fr	7 5	4 55	9	50 16	0	10 1	18	8	feet	3 41	11
7	Sa	7 6	4 54	9	48 16	18	11 2	31	9	head	4 34	11
8	D	7 7	4 53	9	46 16	35	12 3	48	10	head	5 29	11
9	M	7 9	4 51	9	42 16	53	13 5	3	11	neck	6 24	11
10	Tu	7 10	4 50	9	40 17	10	☉ rises.	morn.		neck	7 21	11
11	W	7 11	4 49	9	38 17	26	15 5	46	0	neck	8 0	11
12	Th	7 13	4 47	9	31 17	43	16 6	29	1	arms	8 39	11
13	Fr	7 14	4 46	9	32 17	59	17 7	17	2	arms	9 19	15
14	Sa	7 15	4 45	9	30 18	15	18 8	9	3	breast	10 11	11
15	D	7 16	4 44	9	28 18	30	19 9	5	3	breast	11 4	11
16	M	7 17	4 43	9	26 18	45	20 10	5	4	heart	11 56	11
17	Tu	7 18	4 42	9	24 19	0	21 11	8	5	heart	morn.	11
18	W	7 19	4 41	9	22 19	15	☾ morn.	6	29	belly	1 30	11
19	Th	7 20	4 40	9	20 19	29	23 0	12	7	belly	2 14	11
20	Fr	7 22	4 38	9	16 19	43	24 1	18	7	belly	2 56	11
21	Sa	7 23	4 37	9	14 19	56	25 2	21	8	reins	3 38	11
22	D	7 24	4 36	9	12 20	9	26 3	23	9	reins	4 20	11
23	M	7 25	4 35	9	10 20	22	27 4	23	9	secrets	5 3	13
24	Tu	7 26	4 34	9	8 20	34	28 5	21	10	secrets	5 48	11
25	W	7 27	4 33	9	6 20	46	29 6	16	11	secrets	6 34	11
26	Th	7 28	4 32	9	4 20	58	☉ sets.	ev.	13	thighs	7 23	12
27	Fr	7 29	4 31	9	2 21	9	1 5	58	1	thighs	8 13	11
28	Sa	7 30	4 30	9	0 21	20	2 6	48	1	knees	9 6	11
29	D	7 31	4 29	9	58 21	30	3 7	42	2	knees	9 59	11
30	Mo	7 31	4 29	9	58 21	40	4 8	41	3	legs	10 52	11

16<sup>th</sup> Nov  
18<sup>th</sup> Nov  
Nov



9h. 31m. eve.

's	High	☉
ce.	water	r
es	11 14	6
es	ev 7	"
s]	1 1	"
s	1 54	"
c	2 47	"
d	3 41	"
d	4 34	"
k	5 29	"
k	6 24	"
k	7 21	"
s	8 0	"
s	8 39	"
s	9 19	15
ast	10 11	"
ast	11 4	"
rt	11 56	"
rt	morn.	"
y	1 30	"
y	2 14	11
y	2 56	"
s	3 38	"
s	4 20	"
ets	5 3	13
ets	5 48	"
ets	6 34	"
hs	7 23	12
hs	8 13	"
es	9 6	"
es	9 59	11
	10 52	"

10<sup>th</sup> North Packet sail with Eliza Hope

18<sup>th</sup> October Packet arrives Letter from  
M<sup>rs</sup> Hope



Autumn

Novem

No ve

No lo

Upon

The k

To sh

Wher

And y

In me

The v

And f

Stray

A cov

As de

Last Qu

DM | Ho

D 20th S

2 All S

3 Prs. S

4

5 Powd

6 ♀ sta

7

D 21st S

9 High

10 □ ☉

11 St Ma

12 ♀ set

13

14 ♀ gr

D 22d S

16

17

18 Low

19 ♂ ris

20 ☾ ap

21

D 23d S

23 St C

24 ♀ se

25

26 High

27

28

D Adv

30 St A

November's sky is chill and drear ;  
 November's leaf is red and sear.  
 No longer Autumn's glowing red,  
 Upon our forest-hills is shed :  
 The kine before the frowning heaven,  
 To shelter'd dale and down are driven ;  
 Where yet some faded herbage pines  
 And yet a watery sun-beam shines:  
 In meek despondency they eye  
 The wither'd sward and wintry sky ;  
 And far beneath their summer hill,  
 Stray sadly by the gurgling rill :  
 A covering glance they often cast,  
 As deeper moans the gathering blast.

Last Quar. 18th d. 4h 37m morn | New Moon 26th 5h 19m morn

DM	Holidays, Weather, &c.	FARMER'S CALENDAR.
D	20th Sun. af. Trin. All Saints	You will be rewarded for a little extra attention in making your cider ; be careful that the apples are ripe, but not rotten. The mill clean, and clean, sweet straw with the pumace, and do not suffer water to come near it in any shape whatever. The cask too, should be chosen and prepared with care, and look with a nice eye to its fermentation. All this costs but a little more time or labour than it does the sloven to prepare his dirty, watery stuff, which he finally spoils by putting it into rusty casks, or by neglecting to watch and regulate its fermentation.
2	All Souls.	
3	Prs. Sophia b. <i>winter</i>	
4	<i>weather</i>	
5	Powder Plot, 1605.	
6	♀ stat. <i>approaches.</i>	
7	<i>let it not</i>	
D	21st Sun. af. Trin. Prs. Aug.	
9	High tides. [Soph. b. ☾ per.	
10	☐ ☉ h. <i>come upon u</i>	
11	St Martin. <i>unawares.</i>	
12	♀ sets 7h 18m	
13	<i>pleasant</i>	
14	♂ gr. elong.	
D	22d Sun. af. Trin.	
16	<i>colder and stormy.</i>	
17		
18	Low tides. <i>looks like</i>	
19	♂ rises 4h 29h <i>snow.</i>	
20	☾ apogee.	
21		
D	23d Sun. af. Cecilia. [☉ en-	Inspect your implements of husbandry, and let such as have defects or are damaged or broken, be repaired in the season of leisure, that there may be no loss of time when you wish to use them. Let such implements as you have done with this season, be carefully preserved for the next.
23	St Clement. <i>ters ♄.</i>	
24	♀ sets 7h 36m	
25	<i>hail and rain.</i>	
26	High tides.	
27		
28	<i>rather unpleasant.</i>	
D	Advent Sun. h stat.	
30	St Anhrew. ♀ sets 7h 44m	



First Quar. 3d d. 2h. 20m. aft. Full Moon 10th d. 9h. 24m. morn.

D	M	☉	☽	Days	Sum's	☾	☾	R.	☾	☾'s	High	☽
		rises	sets	len th	dec. N	A	& S.		south.	place.	water	
1	Tu	7 32	4 28	8 56	21 49	5 9	45	4 35	legs	11 46	11	
2	W	7 33	4 27	8 54	21 58	3 10	52	5 28	legs	eve 38	10	
3	Th	7 34	4 26	8 52	22 7	☽	morn.	6 19	feet	1 20	"	
4	Fr	7 34	4 26	8 52	22 15	8 0	57	11	feet	2 21	"	
5	Sa	7 35	4 25	8 50	22 23	9 1	20	8 2	head	3 12	9	
6	D	7 36	4 24	8 48	22 31	10 2	32	8 55	head	4 5	"	
7	M	7 36	4 24	8 48	22 38	11 3	47	9 49	neck	4 59	8	
8	Tu	7 37	4 23	8 46	22 44	12 4	59	10 44	neck	5 54	"	
9	W	7 37	4 23	8 46	22 50	13 6	7	11 40	arms	6 50	7	
10	Th	7 38	4 22	8 44	22 56	☉	rises.	morn.	arms	7 35	"	
11	Fr	7 38	4 22	8 44	23 1	15 6	0	0 36	breast	8 15	6	
12	Sa	7 39	4 21	8 42	23 6	16 6	49	1 31	breast	9 5	"	
13	D	7 39	4 21	8 42	23 10	17 7	43	2 24	heart	9 46	"	
14	M	7 39	4 21	8 42	23 14	18 8	41	3 15	heart	10 32	5	
15	Tu	7 39	4 21	8 42	23 17	19 9	41	4 2	heart	11 17	"	
16	W	7 40	4 20	8 40	23 20	20 10	44	4 47	belly	11 59	4	
17	Th	7 40	4 20	8 40	23 22	21 11	47	5 31	belly	morn.	"	
18	Fr	7 40	4 20	8 40	23 24	☾	morn.	6 13	reins	1 23	3	
19	Sa	7 40	4 20	8 40	23 26	23 0	50	6 55	reins	2 5	"	
20	D	7 40	4 20	8 40	23 26	24 2	27	37	reins	2 47	2	
21	M	7 40	4 20	8 40	23 27	25 3	15	8 20	secrets	3 30	"	
22	Tu	7 40	4 20	8 40	23 27	26 4	23	9 5	secrets	4 15	1	
23	W	7 40	4 20	8 40	23 27	27 5	47	9 52	thighs	5 2	"	
24	Th	7 40	4 20	8 40	23 28	28 5	37	10 42	thighs	5 52	0	
25	Fr	7 40	4 20	8 40	23 24	☉	sets.	11 34	knees	6 44	S	
26	Sa	7 40	4 20	8 40	23 22	1 5	25	ve 28	knees	7 38	1	
27	D	7 40	4 20	8 40	23 20	2 6	22	1 23	knees	8 33	"	
28	M	7 39	4 21	8 42	23 17	3 7	21	2 18	legs	9 28	2	
29	Tu	7 39	4 21	8 42	23 14	4 8	27	3 11	legs	10 21	"	
30	W	7 39	4 21	8 42	23 10	5 9	38	4 4	feet	11 14	3	
31	Th	7 38	4 21	8 42	23 6	6 10	53	4 56	feet	eve 6	"	

*Tricks*

15 *Tricks*

Month

-----



Feb 2 November Mail arrives Letter from Mr. W. J.

24m. morn.

High ☉  
water F

11	46	11
eve	38	10
1	20	"
2	21	"
3	12	9
4	5	"
4	59	8
5	54	"
6	50	7
7	35	"
8	15	6
9	5	"
9	46	"
10	32	5
11	17	"
11	59	4
morn.	"	"
1	23	3
2	5	"
2	47	2
3	30	"
4	15	1
5	2	"
5	52	0
6	44	S
7	38	1
8	33	"
9	28	2
10	21	"
11	14	3
eve	6	"

15 Write Mr. W. J.

Winter.

Thun  
That  
Full o  
The r  
Of ato  
Come  
And s  
Before  
But so  
Of che

Last Qua

DM | Ho

1	
2	Low t
3	
4	
5	♀ sets
	D 2d Sun
7	
8	
9	High t
10	
11	♂ sets
12	
	D 3d Sun
14	
15	♀ sets
16	
17	Low t
18	♂ ☉
19	
	D 4th S
21	St. Th
22	
23	
24	♂ ☉
25	Chris
26	St St
	D 1st S
28	Inno
29	
30	
31	☾ pe

Thump after thump resounds the constant flail,  
 That seems to swing uncertain, and yet falls  
 Full on the destined ear. Wide flies the chaff,  
 The rustling straw sends up a frequent mist  
 Of atoms, sparkling in the noon-day beam.  
 Come hither e that press your beds of down,  
 And sleep n t ; see him sweating o'er his bread  
 Before he eats it—'Tis the primal curse,  
 But softened into mercy ; made the pledge  
 Of cheerful days, and nights without a groan.

Last Quar. 18th d. 1h. 50m. morn | New Moon 25th d. 11h. 33m, eve

DAY	Holidays, Weather, &c.	FARMER'S CALENDAR.
1		<i>not unpleasant</i>
2	Low tides.	<i>for</i> Attend to your spiritual as
3		<i>the season.</i> well as your secular concerns;
4		for man, proud man, in all his
5	♀ sets 7h 55m.	<i>rain</i> splendour and glory, is the
6	D 2d Sun. in Advent.	D <i>perigee</i> creature of yesterday, and li-
7		<i>if not snow</i> able every moment to be cut
8		down. See him, at one time,
9	High tides.	in all his pride, magnificence
10		<i>winter now</i> and grandeur, standing on
11	♂ sets. 4h 8m	his lofty eminence, and look-
12		<i>commences</i> ing down on a subject world!
13	D 3d Sun. in Advent.	Look, once again, and where
14		<i>in earnest.</i> is he ? The mysterious fire of
15	♀ sets 8h 6m	his existence is extinguished;
16		<i>windy and</i> the cold cloud presses on his
17	Low tides.	<i>cold.</i> colder bosom, and the dull
18	♂ ☉ ♃. very low tides.	☉ Cap. worm banquets on that brow
19		where once glowed the star
20	D 4th Sun. in Advent.	of honor and the purple of do-
21	St. Thoms. ☉ enters ♉	minion. Of those of our frail
22		<i>snow</i> fellow-mortals of this transi-
23		tory and sublunary world, who
24	♂ ☉ ♀.	<i>cold</i> began this year with us, more
25	Christmas Day. High tides.	than <i>thirty millions</i> are now
26	St Stephen. ♀ gr. elong.	numbered with the mighty
27	D 1st Sun. af. Christmas. St John	dead. This consideration
28	Innocents.	<i>the year</i> should excite us to serious
29		<i>expires with</i> attention to the things that
30		<i>symptoms of</i> concern our eternal welfare.
31	☾ perigee.	<i>a storm.</i>

## PROVINCE OF NOVA-SCOTIA.

Lieutenant-Governor and Commander in Chief of the Province of Nova-Scotia and its Dependencies and Commander of the Forces in Nova-Scotia, New-Brunswick, Prince Edward Island, &c. &c. &c. His Excellency Lieutenant General Sir PEREGRINE MAITLAND, Knight Grand Cross of the Most Honorable Military Order of the Bath, &c. &c. &c.

—\*—

**HIS MAJESTY'S COUNCIL.**

Honorable Sampson Salter Blowers, president.  
Honourable and Right Reverend John Lord Bishop of Nova Scotia, Hon. Michael Wallace, Richard J. Uniacke, Chas. Morris, James Stewart, Thos. N. Jeffery, Brenton Halliburton, Hibbert N. Binney, Enos Collins, Simon B. Robie and Charles R. Prescott.

Clerk, Sir R. D. George. Bt. : assistant clerk, Wm. Hill, Esq ; chaplain, Revd Robert Willis. D. D.

—\*—

**HOUSE OF ASSEMBLY.**

S. G. W. ARCHIBALD, Esquire, Speaker.

County of Halifax.—S G W Archibald, Wm Lawson, Geo Smith and Lawrence Hartshorne, Esqrs.	Kavanagh and R J Uniacke, Esqrs Town of Halifax.—C R Fairbanks and Dennis Murdoch, Esqrs.
County of Annapolis.—T C Halliburton and Wm Roach, Esqrs.	Truro.—C D Archibald, Esq Onslow.—J Crow, Esq.
County of Cumberland.—Alex. Stewart and Jos Oxley, Esqrs.	Londonderry.—J Wier, Esq. Annapolis.—Jas R Lovett, Esq.
County of Lunenburg.—I of Church and Wm Rudolf, Esqrs.	Granville.—T Ruggles, Esq. Digby.—J Morton, Esq.
Kings County.—Wm A. Chipman and Samuel Bishop, Esqrs	Lunenburg.—J Heckman, Esq Amherst.—Jas S Morse, Esq
Queen's County.—Jos Freeman and John Burs, Esqrs.	Horton.—Jas Harris, Esq Cornwallis.—Jno Morton, Esq.
Hants County.—Benj, Dewolf and R Smith, Esqrs	Falmouth.—David Dill, Esq. Falmouth.—W H Shey, Esq.
County of Shelburne.—John McKinnon, and ——— Esqrs.	Barrington.—J Pomer, Esq. Liverpool.—Jas R Dewolf, Esq.
County of Sydney.—Thomas Dickson and John Young, Esqrs	Newport.—Shubael Dimock, Esq Shelburne.—J A Barry, Esq.
County of Cape Breton.—Law.	Yarmouth.—S S Poole, Esq.

Chaplain, Revd F Uniacke, MA. Clerk, John Whidden, Esq ;  
Aest do J F Gray, Esq. Sergeant at Arms, Mr Thos Boyd. Ser-  
geant of the Gallery, Mr M Forrester. Messenger, Mr John Gibbs

## Provincial Officers.

Surveyor General of Lands, Hon Chas Morris ; Treasurer, Hon M Wallace ; Secretary, Sir R D George, Bt. ; Commissioner of Crown Land, John Spry Morris, Esq.

## Court of Chancery.

Chancellor, His Excellency Sir Peregrine Maitland ; Master of the Rolls, Hon S B Robie, L L D ; Masters in Chancery, Hon B Halliburton, Hon Jas Stewart ; Lewis M Wilkins, Peleg Wiswell and J G Marshall, Esqrs. ; Registrar, H H Cogswell, Esq. ; Counsellors and Solicitors, the Barristers and Attornies of the Supreme Court.

*Court of Error, Marriage and Divorce.*

His Majesty's Council ; Advocates and Proctors, the Barristers and Attornies of the Supreme Court.

*Court of Vice Admiralty.*

Judge, Hon S S Blowers ; Advocate Genl. Hon R J Uniacke ; Solicitor Genl. S G W Archibald, Esq L L D ; Registrar, L Pennell, Esq ; Deputy Registrar, J S Tremain, Esq. ; Marshall, J Patman, Esq ; Dep Marshall, S W Deblois, Esq ; Advocates and Proctors, the Barristers and Attornies of the Supreme Court.

*Court of Escheats and Forfeitures.*

Commissioner, Hon Michael Wallace ; Registrar, Sir Rupert D George, Bt.

*Court for the Probate of Wills and granting Letters of Administration.*

Surrogate General. Hon Chas Morris ; Registrar, John Spry Morris, Esq

*Supreme Court.*

Chief Justice, Hon Sampson Salter Blowers ; Puisne Judges, Hon B Halliburton, Hon Jas Stewart, and Lewis M Wilkins, Esq ; Associate Judge, P Wiswell, Esq ; Attorney General, Hon R J Uniacke ; Sol Gen S G W Archibald, Esq L L D ; King's Counsel, R J Uniacke, jr. Wm Hill, and C R Fairbanks, Esqrs. Clerk of the Crown and Prothonotary throughout the Province, Wm Thompson, Esq ; Deputy, J W Nutting, Esq.

*Barristers and Attornies at Law of the Supreme Court residing in the Province*

Halifax—H H Cogswell, D S Clarke, S G W Archibald, R J Uniacke, jun. J W Nutting, William Hill, C R Fairbanks, J W Johnston, W Q Sawers, Jas Cochran, N W White, W B Bliss, Beamish Murdoch, E Crawley, Alex Primrose, James S Tremain, Chas Twining, Jas B Uniacke, C D Archibald, J J Sawyer, J F Gray, W Fleigher, Jas Stewart Clarke, Wm Young, Hugh Hartshorne, E H Harrington, Law. O'C. Doyle, John C Halliburton, W Bowman, and W H Keating, Esqrs

Pictou.—Thos Dickson, Jotham Blanchard, Henry Blackadar, R B Dickson, Martin Wilkins, Wm Sutherland, Esqrs



Truro—Jonathan Marsters, James W Chandler, John D Archibald, and Geo H Emerson, Esqrs.

Annapolis.—T C Haliburton, H Goldsmith, John Johnston, Alex Winniett, and Wm H Lee, Esqrs.

Digby—G K Nicholls, Esq.

Bridgetown—Steph Bromley and C. T. C. Mac Colla Esqrs.

Amherst.—James S Morse, Alex Stewart, Chas D Roach, and Silas C Morse, Esqrs.

Kentville.—John Whidden, John C Hall, Jas Dennison and Stephen H Moore, Esqrs.

Windsor.—H A Emerson and L M Wilkins, Esqrs.

Newport.—D D Stewart, Esq.

Antigonish.—John Thos Hill and Alex McDougall, Esqrs.

Shelburne.—Colin Campbell, Esq.

Yarmouth.—John Foreman, Esq.

Guysborough.—F W Des Barres and C W Weeks, Esqrs.

Liverpool.—Wm Sterns and S P Fairbanks, Esqrs.

Arichat.—Wm C Delaney, Esq.

Lenenbyrg.—Jno Creighton, G F Solomon, C W H Harris, Charles Owen and Charles Bolman, Esqrs.

Chester.—Wm Greaves, Esq.

Non-residents practising in Cumberland—E B Chandler and James Stewart, Esqrs.

#### *Nova-Scotia Barrister's Society.*

Patrons, his Excellency the Chancellor, the Honorable the Chief Justice.

Honorary Members, the Judges of the Supreme Court : Treasurer, H H Cogswell, Esq : Secretary and Librarian, J W Nutting, Esq.

Committee for the year 1829, Wm Hill, Jas B Uniacke, and Jas S Tremain, Esqrs.

#### *Justices of the Peace throughout the Province.*

His Majesty's Council and the Speaker of the House of Assembly.

#### *Commissioners of the Revenue.*

Hon M Wallace, Hon S B Robie, Wm Lawson, R J Uniacke, and Law Hartshorne, Esqrs. Wm Newton, Esq Clerk.

#### *Commissioners for Light Houses.*

Saml Cunard, Thos Maynard and John Douglas, Esqrs

#### *Shubenacadie Canal Company.*

President, Hon Michael Wallace. Vice Presidents, Hon T N Jeffery, and Samuel Cunard, Esq. Directors, Jos Allison, Thos Boggs, Jas Tobin, L Piers, S W Deblois, Jno Clark, J A Barry, and Wm Pryor, Esqrs. Solicitor and Secretary, C R Fairbanks, Esq. Engineer, F Hall, Esq

#### *King's College Windsor.*

Patron, his Grace the Lord Archbishop of Canterbury.

Visitor, the Lord Bishop of Nova-Scotia.

Governors, his Excellency the Lieutenant Governor, the Right Reverend the Lord Bishop of Nova-Scotia, the Hon the Chief Justice, the Judge of the Court of Vice Admiralty, the

Spea  
Solic  
Presi  
Pre  
Porte  
and L  
Meta  
sar,  
Math  
venso  
ham  
Gove  
TE  
the 15  
Satur  
Mo  
Satur  
Th  
ends c  
Pa  
Geor  
K C  
Hon  
and  
Go  
Pres  
land  
Esq  
Smit  
Alex  
Matt  
M'C  
McK  
TH  
Brun  
Arch  
Fitzp  
Twin  
lain  
St P  
mou  
Wee  
A.  
Nor  
Coel  
Wri  
Cha  
Rav  
fred  
sor.

Speaker of the House of Assembly, the Attorney General, the Solicitor General, the Secretary of the Province, the Revd the President of the College and the Revd Dr. Cochran.

President & Professor of Divinity and Hebrew, the Rev Chas Porter, DD, Vice President; Professor of Grammar, Rhetoric and Logic, and acting Professor of the moral Sciences and Metaphysics. Rev William Cochran, DD.; Fellow and Bursar, Revd William B King, M A.; Acting Professor of Mathematics, Natural Philosophy and Astronomy, John Stevenson; Sec'y & Treasurer, Jas Cochran, Esq; Librarian, Abraham Wiggins, Scholar; Academy under the direction of the Governors of King's College; Principal, Rev Fras Salt, M A.

TERMS.—Sept. 1st—Michaelmas Term commences, and ends on the 15th Dec. Jan. 15, Hilary Term commences, and ends on the Saturday preceding Palm Sunday.

Monday after Easter Monday—Easter Term commences, and ends Saturday se'night before Whit Sunday.

The morrow of Trinity Sunday—Trinity Term commences, and ends on the 1st of July.

### Dalhousie College Halifax.

Patron, his Majesty the King. Governors, the Right Hon. George Earl of Dalhousie, his Excellency Sir James Kempt, K C B. the Hon and Rt Rev John, Lord Bishop of Nova-Scotia, Hon S S Blowers, Hon Michael Wallace, Hon Simon B Robie and the President.

### Pictou Academy.

Governed by fourteen Trustees, who are to profess, either the Presbyterian system of Religion, or that of the Church of England. Trustees, Hon S B Robie, L L D, S G W Archibald, Esq L L D, Rev Thos McCulloch D D, Duncan Ross, George Smith, James MacGregor DD, Jno McKinley, Jas Foreman, Alex Grant, John Patterson, Robt McKay, Jno McLean, Wm Matthewson, and James Robson. Head master, Rev Thomas McCulloch, D D.; Assistant, Mr M McCulloch; Sec'y, Rev Jno McKinley.

Clergy of the Established Church in Nova-Scotia.

The Hon and Right Rev John, Lord Bishop of Nova-Scotia, New Brunswick and their Dependencies. Venerable Robert Willis, DD. Archdeacon of Nova-Scotia, and Rector of St Paul's, Halifax. Rev T Fitzgerald Uniacke, M A. Rector of St George's, Halifax. Rev J T Twining, D D. Garrison Chaplain. Rev Edward Wix, M A. chaplain to the Lord Bishop of Nova Scotia, and officiating Clergyman at St Paul's and district of Halifax. Rev M B Desbrisay, B A Dartmouth. Revd John Millidge, L L D. Annapolis. Revd Charles B Weeks M A. Guysborough and Antigonish. Rev Edwin Gilpin, M A. Aylesford. Rev James Shreve, M A. Chester. Rev Robert Norris, M A. Cornwallis. Rev Roger Viets, Digby. Rev William Cochran, DD. Falmouth. Rev J Whalley, Granville. Rev Joseph Wright, B A. Horton. Rev James Cochran, B A. Lunenburg. Rev Charles Porter, D D. Newport. Revd George E W Norris, M A. Rawdon. Rev Thomas B Rowland, L L D. Shelburne. Rev Alfred Gilpin, M A. Weymouth. Rev Wm Col-sel King, M A. Windsor. Rev Wm King, jun. M A. visiting missionary. Rev Thos A.

Grantham, M A. Yarmouth. Rev John T Moody, B A. Liverpool. Rev John Burnyeat, Truro. Rev Moore Campbell, B A. Cornwallis, assistant. Joshua Weeks, B A. La Have. Rev Charles Ingles, B A. Sydney; Rev Richard B Wiggins, B A. Amherst. Rev J Shaw, Arichat. Rev Wm W Walker, St Eleanor's, P E Island. Rev F Salt. W A. Principal of Academy at Windsor.

### Clergy of the Established Church in New Brunswick.

The Hon and Right Rev John, Lord Bishop of Nova Scotia, New Brunswick and their dependencies. Venerable George Best, B A. Archdeacon of New Brunswick and Rector of Fredericton. Rev Geo MacCawley, M A. assistant, Fredericton, Rev Frederick Coster. Carleton. Rev James Somerville, M A. St Mary's. Rev Samuel R Clarke, Gage Town. Rev Abraham Wood, Grand Lake. Rev James Cookson, Hmpton. Rev Elias Scovil, Kingston. Rev Raper Milner, B A. Mangerville. Rev Samuel Bacon, B A. Miramichi. Rev Christopher Milner, B A. Sackville. Rev Jerome Alley, M A. St Andrews. Rev Samuel Thomson, B A. St George. Rev Benj G Gray, St John. Rev T W Gray, M A. assistant. Rev Sheff. Thompson. D D. St Stephen's. Rev Oliver Arnold, Sussex Vale, Rev Gilbert L Wiggins, B A. Westfield. Rev Addington Davenport Parker, B A. Prince William.

### Clergy of the Established Church in Newfoundland.

The Hon and Right Rev John, Lord Bishop of Nova Scotia, and bearing Episcopal Authority in the Island of Newfoundland, Venerable George Coster, M A. Archdeacon of Newfoundland and Rector of Bonavista. Rev Charles Blackman, B A. Gren's Pond. Rev John Burt, Harbour Grace and Carboneer. Rev Fred H Carrington B A. St John's. Rev T H Laugharne, visiting out harbours. Rev William Bullock and Rev Otto R Schwartz Weeks, M A. Trinity Bay. Rev John Chapman, Twillingate. Rev Peter Pering, M A. Ferryland.

### Clergy of the Roman Catholic Church in N. Scotia.

Right Revd Wm Fraser, Ep. Tan. V. A. N. S.

Revd John Laughlan, Halifax.

Revd James Danphy, Ketch Harbour, Prospect. Revd Dennis Geary, Chezetcook. Revd Mr. Sigogne, French Town. Revd Colin Grant, Gulf Shore. Revd Pere Vincent, De La Trappe, Tracadie.— Revd James Grant, Manchester. Revd Francois Xavier, DeLaTrappe, Pomkett. Revd Mr. Potvin, Arichat. Revd Geo McEagenvy, Sydney. Revd Mr. McLeod, Bras d'Or. Revd Dennis Lawlor, St. Peters.

### Ministers of the Established Church of Scotland.

Halifax—St Matthew's, Rev John Scott. St Andrew's, Rev John Martin, Rev Thos Aitken. Dartmouth, Rev Jas Morrison. Cornwallis, Rev Wm Forsyth. Horton, Rev Geo Struthers. Pictou Town, Rev K J McKinzie. East River, Rev Donald A Fraser. Upper Settlement, Rev John McCree.

Prince Edward Island—(Belfast,) Rev John McLennan.

New Brunswick—(St John,) Rev George Burns, D D; (St Andrew's) Rev Alexander McLean.

### MINISTERS OF THE PRESBYTERIAN CHURCH OF NOVA-SCOTIA

Presbytery of Truro—Stewiack, Rev Hugh Graham, A M. Loss

donderry  
dobit, R  
Andrew  
Presb  
West R  
A M.  
Patrick.  
Trotter.  
Rev W  
Presb  
Peter's,

Nova  
combe  
Marsha  
wallis,  
nett, su  
H Pope  
M Rich  
New  
trict.  
Strong.  
Prin  
Town,

Hali  
Granvi  
Amher  
Dimoc  
Geo R  
R Mc  
wallis,  
ville,  
Rev Is  
neck,  
Saml  
Island

cers,  
they b

T  
the C  
F. G  
H  
Roll  
Su  
1st

donderry, Rev John Brown. Truro, Rev John Waddell. Musquodobit, Rev John Spratt. Douglas, Rev T S Crowe. (Economy) Rev. Andrew Kerr.

Presbytery of Pictou—East River, Rev James McGregor, D D. West River, Rev Duncan Ross. Pictou, (town) Rev Jno M'Kinley, A M. River John, Rev John Mitchell. Merigomish, Rev Wm Patrick. Miramichi, Rev James Thompson. Dorchester, Rev Thos Trotter. St Mary's, Rev Alex Lewis. Maubou and Port Hood, Rev W Miller. Richibucto, Rev John M'Lean.

Presbytery of Halifax—Upper Shubenacadie, Rev Robt Blackwood.

Presbytery of P. E. Island—Prince Town, Rev John Keir. St. Peter's, Rev Robt Douglas. Richmond Bay, Rev Wm M'Gregor.

#### Wesleyan Missionaries.


Nova-Scotia, (Halifax) Rev S Bamford, chairman, Rev Wm Crosscombe and Rev Wm Black, supernumerary. Liverpool, Rev John Marshall. Annapolis, Rev Albert Desbrisay. Horton and Cornwallis, Rev G Miller. Newport, Rev R H Crane and Rev Wm Bennett, supernumerary. Windsor, Rev Robt Young. Parrsboro' Rev H Pope. Wallace, Mr J Henegar. Shelburne and Barrington, Rev M Richey. Lunenburg, Rev Thos H Davis.

New-Branswick, (St John) Rev R Williams, chairman of the district. Westmoreland, Rev Sampson Busby. Fredericton, Rev J B Strong. St Stephen's, Rev D McColl.

Prince Edward Island, (attached to the N Scotia district) Charlotte Town, Rev W Temple. Tryon & Bedeque, Rev Jno Snowball.

#### Baptist Ministers in Nova-Scotia.

Halifax, (Old Baptist Church) Rev John Burton. New Church in Granville Street, Rev H K Green, M A. Onslow, Rev Jas Munro. Amherst, Rev Chas Tupper and Saml McCulley. Chester, Rev Jos Dimock and Mr John Bezanson, a licentiate. Hammond Plains, Rev Geo Richardson. Newport and Raymond, Rev Geo Dimock and Mr R McClearn, a licentiate. Horton, Rev Theodore S Harding. Cornwallis, Rev Edw Manning. Nictau, Rev Thos H Chipman. Granville, Rev Thos Ansley. Annapolis, Rev Wm Elder. Clements, Rev Israel Potter and Mr Garskille and McGrigor, licentiates. Digby neck, Rev Peter Crandall. Grand Passage, Rev E Towner, and Mr Saml Bancroft, a licentiate. Yarmouth, Rev H Harding. Ragged Islands, Rev John Craig. Lunenburg, Mr F Hably, licentiate.

  
*Memorandum.*—The Sittings of Courts, Names of Officers, &c will be found arranged under the respective counties to which they belong.

#### COUNTY OF HALIFAX.

Town and district of Halifax Proper—High Sheriff of the County, John James Sawyer, Esq. Coroner, James F. Gray, Esq

High Court of Chancery, held before the Master of the Rolls, on the first Monday in every week.

Supreme Court sits at Halifax on the 2d Tues. of Jan. 1st Tues. of April, 2d Tues. of July, and 2d Tues. of Oct.

Inferior Court sits on the 2d Tuesday of March, June, Sept. and Dec.—Judges, Hon M Wallace, Jas Forman, Jno Howe, and Wm Lawson, Esqrs.

Commissioners' Court sits the 1st Monday of every month. Commissioners, Jas Forman, Jas Tobin, Rich Tremain, Jno Liddell, and D S Clarke, Esqrs. Clerk, Jas Stewart Clarke, Esq.

Police Office open every day throughout the year, (Holidays excepted.)—Justices, John Liddell, H Yeomans, Mat. Richardson, Esqrs. D S Clarke, Esq. clerk.

Sessions of the Peace held on the 1st Tuesday of March, June, Sept. and Dec.

*Justices of the Peace of and for the County, residing in the District of Halifax.*

Jas Forman, (Custus Rotulorum); John Howe, senior, Rufus Fairbanks, Saml Head, Jno Liddell, Rich Tremain, H Yeomans, P McNab, Wm Lawson, Saml Albro, Jno Albro. M Tobin, M Richardson, J D Hawthorne, Thos Holland, Isaac Rayne, H Y Mott, Jas Money, Jno Allan, G N Russell, John Leander Starr, Wm H Roach, — Gladwin and Jno S Morris, Esqrs. D S Clarke, Esq c r.

*Commissioners for visiting the Poor House.*

Hon R J Uniacke, Hon C Morris, Hon T N Jeffery, John Stayner, Richard Tremain, H Yeomans, J Clark, M Tobin, G N Russell, J Forman, and Thos Pyke, Esqrs

*Commissioners of Streets for the Town of Halifax.*

Jas Forman, J Albro, M Tobin, F Major, and Samuel Comard, Esqrs. For the township of Dartmouth, Saml Albro, Hugh Hartshorne, and E H Lowe, Esqrs.

Registrar of Deeds, &c. Sir R D George, Bt.

Health Officer for the Port of Halifax, Charles W Wallace, Esq M D.

Post Master General for N. Scotia and N. Brunswick, John Howe, Esq. jun. Halifax.

Principal Inspector of Pickled Fish for the Province, Jonathan Tremain, Esq

Comm'rs of Schools, the Venerable Archdeacon Willis, D D, Rev Mr Scott, C R Fairbanks, Saml Albro and H Y Mott, Esqrs.

*Officers of H. M. Naval Yard.*

A F Jones, Esq master shipwright; John Douglas, Esq master attendant; Mr Jas Ritchie, master shipwright's clerk; Mr J H Moore, clerk; Mr Jas Matthews, gate porter.

Hon  
ardson,  
Sherlock  
collecto

Hon  
James P  
Duckett  
son, tide  
ence Co  
Ware

Henry  
dent.  
Alli-on,  
mr J C  
Disc  
Hour  
the Pub  
previous

Rich  
South S  
—St P  
St Matt  
Ward, C  
Ward, J  
dell, J C  
and S W  
J N Sha  
Com  
Fires—  
Esqrs—

Jas D  
J Farqu  
W Cald  
Wilkie,  
well an  
Secor  
Irwin,  
T Wilco  
Jas Mal  
and T S  
Thir  
Haverst  
Israel T  
Four  
Norris,

R R  
M Creu

*Officers of the Provincial Revenue.*

Hon H N Binney, collector of impost and excise ; Andrew Richardson, Esq guager and weigher ; Jas Barrett, Robt Hodges, Geo Sherlock, waiters and shipping officers ; William Cleaveland, collector of licence duty ; Edw Duckett, collector of light duty.

*Officers of His Majesty's Customs.*

Hon Thos N Jeffery, collector ; John Wallace, Esq comptroller ; James Purvis and D H Watson, Esqrs waiters and searchers ; Edw Duckett, surveying officer of shipping ; A E Coren and F W Atkinson, tide surveyors ; R B Young, Errol Boyd, Alex Hays and Terence Connell, tidesmen ; Jas Wall and W Hays, boatmen.

Warehouse—Joseph Dean, Esq Keeper ; R Dimmett, Locker.

*Halifax Banking Company.*

Henry H Cogswell, Esq President. Wm Pryor, Esq Vice President. Hon Enos Collins, Jas Tobin, Samuel Cunard, John Clark, Jos Allison, Martin C Black, Esqrs Directors. N T Hill, Esq cashier. Mr J C Wilkie and Mr Thos Tobin, clerks. Mr Jos Keefer, messenger.

Discount Days—Tuesdays and Fridays.

Hours of business—from 10 to 3 o'clock ; Sundays and Holidays at the Public Offices excepted —Notes for discount to be left the day previous to the discount day, with the cashier.

*Fire Wardens of the Town of Halifax.*

Rich Tremain, Esq chairman,—Jno Albro, Esq sec'y & treasurer ; South Suburbs, Edw Pryor jr, C R Fairbanks and Jas Tremain, Esqs ; —St Peter's Ward, J Albro, J E Fairbanks and Jas Bain, Esqrs—St Matthew's Ward, L Hartsorne and J A Barry, Esqrs—St Paul's Ward, G N Russell and W A Black, Esqrs—County Court House Ward, Jno Dupuy and Thos Boggs, Esqrs—St John's Ward, J Liddell, J Clark and Jos Allison, Esqrs—North Barrack Ward, M Tolson and S W Deblois, Esqrs—North Suburbs, J Dempster, S Cunard, and J N Shannon, Esqrs

Committee of the Fire Wardens appointed to manage and direct at Fires—Rich Tremain, Thos Boggs, Jno Albro, E Pryor and J Clarke, Esqrs—E Pryor and J Clark, Esqrs to direct the Axe-men.

*Fire Engine Company.*

Jas Dechman, captain—First Division, D Hutton, lieutenant ; H Hill, J Farquhar, T Mackie, J Carter, T Pallister, W J Rogers, J Mitchell, W Caldwell, D McLennan, T Connors, W Murray, A Malcolm, J Wilkie, J Mahany, H St Andrews, Jos Bennett, J Sturmy, Wm Liwell and Wm Flynn.

Second Division, Thos Cassedy, lieutenant ; Jas Carmichael, E Sturmy, Irwin, J Drillio, A Crawford, G S Wilson, D McLean, J Winton, T Wilson, C Hunter, J Mullig, J Richardson, S Rudolf, B Smithers, Jas Malcolm, W Crawford, Jno Johnston, Jos Scriven, Wm Miller and T Seton.

Third Division, Geo Little, lieutenant ; H Spike, Jas Thompson, Robt Haverstock, Saml Carter, P Manson, Wm Valentine, Jas Thomson, 3d, Israel Thomas, R Bigsby (sec'y), and Wm Dillen.

Fourth Division, M Byren, lieutenant ; Elias Cabbott, John West, Robert Norris, A Boyle, R Woodill, P Sparling and J Winters.

*Axe-Tiremen for the Town of Halifax.*

R Richardson, captain ; S Hull, lieutenant ; T McKie, sec'y. Geo Jo-t, M Creamer, J McKinzie, Jas McNutt, E Boyd, Jno McNeil, Peter

Fall, Wm Marvin, H Miller, Jas Grant, Wm Rose, M Lownds, W Johnston, W Strickland, P Mahoney, Geo Rose and Geo Booth.

National School—Abel S Gore, Esq master.  
Acadian School—T O'Brien, Esq master.

**MAIL DAYS**—The Eastern and St John, N B. mails arrive in Halifax on Saturday at 3 o'clock, p m. and leaves on Wednesday at 1 o'clock, p m.

The Western mail arrives on Wednesday Evening by the mail Coach and made up at the Post Office on Monday at 4 o'clock, p. m. and forwarded by Coach next morning.

### **EASTERN DIVISION**

Includes the Counties of Cumberland and Sydney, and Districts of Colchester and Pictou. Chief Justice of the Inferior Courts of Common Pleas and President of the Courts of Session in this Division—Jared I. Chipman, Esq.

#### **COUNTY OF HALIFAX.**

##### **DISTRICTS OF COLCHESTER AND PICTOU.**

Supreme Court sits at Pictou on the last Tuesday of May, and 3d Tuesday of Sept. At Truro, on the 1st Tuesday of June and 4th Tuesday of Sept.

Inferior Court and Sessions of the Peace, held at Pictou on the 3d Tuesday of July and 4th Tuesday of January.

Assistant Judges, Hugh Denoon, A McDonald, Geo Smith, R Lowden, A M'Carra, & G Johnston Esqrs. And at Truro, on the 2d Tuesday of July and 3d Tuesday of Jan'y—Asst. Judges, John Fulton, Jas Fulton, Jas Archibald, Thomas J Brown, and Robt Dickson, Esqrs; Geo Dill, Esq. dep proth'y Dis. Colchester; Jas Skinner, Esq ditto Pictou.

*Justice of the Peace*—of and for the County residing in the Districts of Colchester and Pictou—Hugh Denoon, Jno Stewart, Jas Archibald, Robt Lowden, Sam Tupper, W Cotting, Josh Marsh, John Dickson Wm M'Kay, Geo Roy, Matt. Archibald, Went Taylor, Jno Allen, Jas Skinner, Robert Dickson, James McCurdy, George Smith, Jas Benvie, A Archibald, Jno Fraser, Nath Marsters, Thos J Brown, Jas Flemming, J Mahon W Currie, Wm Mattheson, D M'Lean, R M'Kay, And M'Carra, E S Blanchard, Jas Carmichael, Jno Olding, Wm Mortimer, Silas H Crauc, Jno Finlayson, Geo McLeod, Alex Campbell, Jos Fulton, D W Crow, Wm Logan, H Hatton, D Crichton, Sam Archibald 31, Jno Yuill, Jno Holmes, Ken. McLean, A Kan Carr, and Jas Fraser, Esqrs.

Sarrogate Judges—Dis. of Colchester, S G W Archibald, Esq. Dis. Pictou, Geo Smith, Esq.

Comm'rs for taking Special Bail, on Actions dep'g in the S. Court.—Colchester, J Fulton and G Dill, Esq. Pictou, Jas Skinner and H Denoon, Esqrs.

Registrars of Deeds—Dis. of Colchester, Israel Allison, Esq Dis. of Pictou, Geo Smith, Esq.

Die of Pictou—Col of Light Duties, R Corbett.—Col of Impost and Excise and Pro Col of Customs, H Denoon, Esq.—Ditto for Dis. Colchester, Robt Dickson, Esq.

Deputy Sheriffs—Dis. Colchester, Israel Allison, Esq, Dis. Pictou. J W Harris, Esq.

Postmasters.—Alex P Ross, Esq. Pictou. Israel Allison, Esq. Truro. Samuel Moore, Esq. Gay's River.

Comm'rs of Schools—Dis. Colchester, Rev J Burnyeat, Rev Jno Waddell, R Dickson, Saml Tupper and J Flemming, Esqrs

Dis. Pictou—Rev Dun Ross, Geo Smith, Jas Skinner, David Crichton and Jas Carmichael, Esqrs.

COUNTY OF SYDNEY.

High Sheriff for the County, Kenneth McDonald, Esq.—Deputy for the Lower District, Mr Wm Heffernan.

Supreme Court sits at Dorchester, on the 2d Tuesday of Sept—dep proth'y Alex McDonald, M D.

Inferior Court and Sessions of the Peace for the Upper District, held at Dorchester, on the last Tuesday of May and 3d Tuesday of Oct. Asst Judges, J W Hierlihy, John Cunningham and Benj Ogden, Esqrs.

Justice of the Peace—J W Hierlihy, John Cunningham, Alex McDonald, M D, John Mc Donald, Robt Murray, R N Henry, Hugh McDonald. Don. Sinclair, Esqrs. R N Henry, Esq C P.

Surrogate Judge Alex McDonald, M D. Registrar. Ken McDonald, Esq. Dep. Registrar of Deeds, Jno Cunningham. Esq. Coroner, Mr J G Peabody. Dep. Postmaster, R N Henry, Esq Antigonishe.

Inferior Court and Sessions of the Peace—for the Lower dis—held at Guysboro' on the 2d Tuesday of May and 4th Tuesday of Octr. Asst Judges, Thos Cutler and Jos Marshall, Esqrs. Dep. Proth'y, Went. Taylor, Esq

Comm'rs for taking Special Bail on Actions dep'g in the S. Court—Upper dis. Alex McDonald ; Lower dis. Wm Taylor, Esqrs

Justices of the Peace, Thos Cutler, Jos Marshall, Wm Atwater, Christian Miller, Robt M Cutler, Went. Taylor, Patrick Lannigan, C Archibald, Wm McKeene, T Glencross, D Campbell, H McDonald, R Hartshorne, Jno Newton, Jos Maxwell, Edw Langley, Jno Whitman, Geo Norris, and Wm Edge, Esqrs. Mr W O Heffernan, C P. Sur Judge and Dep. Reg of Deeds, Thos Cutler, Esq. Postmasters, Robt M Cutler, Esq. Guysboro' Hugh McDonald, Esq. Sherbrooke, St Mary's. Coroner, Mr P Host. Pro Col of Customs and Col of Impost and Excise, Duncan McColl, Esq.

Commissioners of Schools.—Lower Dis. Rev. C. W. Weeks, R. M. Cutler, Went Taylor, Robt Hartshorne, and Duncan McColl, Esqrs. Upper Dis. the Right Rev. Bishop Fraser, Alex McDonald, J. W. Hierlihy, Benj Ogden and Hugh McDonald Esqrs.

Downs, W Booth.

Mails arrive Wednesday at

by the mail clock, p. m.

and Dis- the Inferior Courts of Ses-

ay of May, Tuesday of

t Pictou on y.

Geo Smith, t Truro, on an'y—Asst.

Thomas J dep proth'y

ding in the , Jno Stew-

W Cotting, Matt. Archi-

bert Dickson, ebald, Jno

g, J Mahon , And M'-

ding, Wm Leod, Alex

l Hatton, D nes, Ken.

Archibald,

p'g in the Pictou, Jas

Allison, Esq



## COUNTY OF CUMBERLAND

High Sheriff, Joshua Chandler, Esq.

Supreme Court sits at River Philip on the 2d Tues of Juno.

Inferior Court and Sessions of the Peace, held at Amherst on the 1st Tuesday of Jany and last Tuesday of June. Asst Judges, Thos Roach, D McFarlane, R McG Dickey and Wm Baker Esqrs S H Morse Esq. dep. proth'y.

Comm'rs for taking Special Bail on Actions dep'g in the Sup. Court, Chas Baker, Thos Roach, S H Morse and D McFarlane, Esqrs.

Justices of the Peace—Gilbert Purdy, Custos Rotulorum, Edw Baker, Gabriel Purdy, Thos Roach, D McFarlane, Wm Baker, Jno Black, Wm White, Geo Bergman, James M'Nab, Thos Cooke, Stephen Oxley, R M'Gowan Dickey, Wm Baker, Esqrs. Jas S Morse, Esq. C P. Surrogate Judge and reg'r. Alex Stewart, Esq. Dep. Reg. of Deeds, Chas Baker. Dep Sur. Lands, Wm Baker, Esq. Col of Impost and Excise, Thos Chapman, Esq. Col of Customs, Mich Gordon, Esq. Coroner, Jno Morse, Esq. Dep. Postmasters, W White, Esq. Amherst; Geo Bergman, Esq. Pugwash; Josh Hustis, Esq. Wallace.

Comm'rs of Schools—Rev N Wiggins, Thos Roach, Danl McFarlane, R McG Dickey, and Jos Oxley, Esqrs.

—o—

### MIDDLE DIVISION

Includes the counties of Hants, King's, Queen's and Lunenburg. Chief Justice of the Inferior Courts of Common Pleas and President of the Courts of Session in this division, W H O Haliburton, Esq.

## COUNTY OF HANTS.

High Sheriff for the County, Terence Cochran, Esq.

Supreme Court sits at Windsor, on the last Tuesday of May and 4th Tuesday of Sept.

Inferior Court and Sessions of the Peace, held at Windsor on the 1st Tuesday of Jany and 1st Tuesday of July. Asst. Judges, R Cunningham, Esq. Rev Wm Cochran, D. D. Wm H Shey and Jno Elder Esqrs.—Dep proth'y, H Jenkins, Esq.

Comm'rs for taking Special Bail on Actions dep'g in the S Court, H Jenkins and Patrick Wright, Esqrs.

Justices of the Peace.—Jno. Emerson, Cust Rot. Rich Cunningham, Wm Smith, Shuael Dimock, W Salter, J Walker Caleb Smith, W H Shey, Jas Whidden, Jno Smith, A Scott, J Parker, B Dewolf, W O'Brien, J Withrow, J Allison, J Dimock, J Elder D Wier, R Smith, T King, B Casey, J Sentell, Jno T Walford, Benl Shillito, Jno Cochran, Benj Smith, Esqrs

Sur. Judge, L M Wilkins, Esq. Dep Reg of Deeds, Col of Imp. and Excise, and Dep. Postmaster, W Bowes, Esq.—Col of Customs, Windsor, P Wright, Esq. Douglas,—Robertson Esq. Comm'rs of Streets, P. Wright and D. Bell Esqrs.

Comm'rs of Schools—Rev W C King, L M Wilkins, W H Shey, P Wright and J Allison, Esqrs

COUNTY OF KINGS.

High Sheriff for the County, Geo Chipman, Esq.

Supreme Court sits at Kentville on the 1st Tuesday of June and 3d Tuesday of Sept. Inferior Court and Sessions of the Peace, held on the 3d Tues. of May and 2d Tues. of Nov.—Asst Judges, Jno Chipman, E Dewolf, W Campbell, W A Chipman and Jas D Harris Esqrs. Dep proth'y, S L Allison, Esq.—Com. for taking Special Bail on Actions dep'g in the S. Court, S L Allison, Esq.

Justices of the Peace—J Chipman, Cus. Rot. ; E Dewolf, W Campbell, J Kerr, W A Chipman, J Ratchford, D Dewolf, S Bishop, J Wells, A Walker, S Dennison, H V Buskirk, J Allison, D Lockart, J D Harris, W Chipman jr, H Harrington, J Maynard, C H Rand, J Lewis jr. S Beckwith, & D Whidden, Esqrs. W Chipman, C P. Coroners, W C Moore, D Dewolf and Jas Allison, Esqrs. Sur. Judge and Dep Reg of Deeds for Horton, Aylesford and Cornwallis, W Campbell, Esq. Ditto for Parrsboro, J Ratchford, Esq. Col of Imp and Excise and of Customs D Whidden, Esq. Postmasters, Elisha Dewolf Esq. Wolfville. Jas Dennison, Esq. Kentville, Jas Ratchford Esq. Parrsboro' Comm'rs of Schools, Rev J. Wright, Saml Bishop, Jas Allison J. D. Harris, and C. H. Rand, Esqrs.

Horticultural Society; President, Hon C R Prescott, Vice-President, Jno Whidden Esq. Corresponding Sec'y Eben F Harding, Esq MD. Recording Sec'y C H Rand Esq. Treasurer J. D. Harris, Esq.

COUNTY OF QUEENS.

High Sheriff for the County, Benjamin Knaut Esq,

Supreme Court sits at Liverpool on the 1st Tues. of July.—Inferior Court and Sessions of the Peace held on the 4th Tues. of April and 4th Tues. of Oct. Ast Judges, J Newton, J Freeman, S Parker B Knaut and J Dewolf, Esqrs. Dep prothy'y. J Rogers, Esq. Com. for taking Special Bail on Actions dep'g in the S. Court, J Rogers, Esq.—Justices of the Peace, J Newton, Cus. Rot. ; J R Dewolf, N Tupper, I Dexter, J Freeman, S Parker, B Knaut, J Gorham, Jno Barss, Jas Dewolf, and R Barry, Esqrs. J Rogers, Esq C P Sur. Judge, J Newton, Esq. Col. of Imp, and Ex. and Col of Customs, J Newton. Esq. Coroner, J Whitman, Esq. Dep Reg of Deeds and Dep Postmaster, B Knaut, Esq.

Comm'rs of Schools. Rev. Jno Moody, Joshua Newton, B. Knaut, Jno Barss and Nat Smith Esqrs.

Comm'rs of Streets, J R Dewolf, B Knaut and W Sterns, Esqrs

COUNTY OF LUNENBURG.

High Sheriff for the County, H Kaulback, Esq

Supreme Court sits at Lunenburg on the last Tues. of June. Inferior Court and Sessions of the Peace held on the 2d Tues. of April and 2d Tues. of Oct. Ast Judges, J Pernette, G Miller, E James, D W Crandall, Esqrs. Dep prothy'y. D Owen, Esq Com. for taking Special Bail on Actions dep'g in the S Court, F J Rudolf, Esq.—Justices of the Peace, E James, Cus. Rot., F G

Etter, J Pernette, D W Crandall, J Walker, J C Rudolf, John Evans, G Miller, W Alexander, Jno Heckman, T Godfrey, G S Wells, Jno Hunt, Fred Morris, Esqrs. F C Rudolf, Esq C P. Sur. Judge, J Pernette, Esq. Dep Reg of Deeds, P Rudolf, Esq. Col. of Imp. and Ex. T Godfrey, Esq. Prev. Officer, A S Bruce, Esq. Coroner and Dep Postm'r, J C Rudolf, Esq.

Comm'r's of Streets. Wm Rudolf and Jno Creighton Esqrs.  
Comm'r's of Schools. Rev J C Cochran, Garret Miller, Jno Heckman, Jno Hunt and Thos Godfrey, Esqrs

### WESTERN DIVISION

Includes the Counties of Annapolis and Shelburne. Chief Justice of the Inferior Courts of Common Pleas and President of the Courts of Session in this District, THOS RITCHIE, Esq.

#### COUNTY OF ANNAPOLIS.

High Sheriff for the County, E H Cutler, Esq.

Supreme Court sits at Annapolis on the 2d Tues of June, and 2d Tues of Sept. Inferior Court and Sessions of the Peace, held on the 3d Tues of April and 1st Tues of Nov. ; and at Digby on the 1st Tues of July and 3d Tues of Dec. Asst. Judges, E Morton, A Snodgras, C U Jones and W F Bonnell, Esqrs. Dep proth'y, E Cutler, Esq. Com for taking Special Bail on Actions dep'g in the S Court, Eb. Cutler, Esq.—Justice of the Peace, E Thorn, Cus Rot. ; Stephen Jones, M Shaw, R T Randolph, B Dodge J Ruggles, E Morton, S V Bayard, J Whitman, P Lovett, J Morehouse, R Hankinson, J M Segoyne, W Jones, T Ritchie, J Querau, Jno Wiswell, jr. E Wheelock, W F Bonnell, C Jones, J Reed, C Jones, J F Randolph, W Bent, P Sanders, W Delancy, S Campbell, S Chesley S Hall, T Ruggles, jr, J Ditmars, J Robertson, Robt Neiley, Anthony Hannan, Joseph Fitz Randolph, Thomas James, Esqrs. E Cutler, Esq C P. Sur Judge, T C Haliburton, Esq Dep Reg's of Deeds, for the Eastern Dis. Wm Winniett, Esq Western, do. S Jones, Esq. Coroners, Sil Snow, Wm Young, and J R Lovett Esqrs—at the Gut, Mr David Hall. Col of Light Duty, of Imp. and Ex and Col of Customs, H Goldsmith, Esq. Dep Postm'r's, H Goldsmith, Esq, Annapolis, W F Bonnell, Esq Digby.

Comm'r's of Schools.—Eastern Dis. Rev Dr. Milledge, H Goldsmith, T C Haliburton, Timothy Ruggles, and Thos James Esqrs. Western Dis. Rev R Viets, Elk Morton, Wm F Bonnell, Cereno Jones, and Chas McCarthy Esqrs.

#### COUNTY OF SHELBURNE.

High Sheriff for the County, John Bingay, Esq

Supreme Court sits at Shelburne on the 2d Tues of July.—Inferior Court and Sessions of the Peace for the dis of Yarmouth and Argyle, held at Tuskett Village on the 1st Tues. of May. and at Yarmouth on the 4th Tues. of Sept. Asst. Judges, S S Poole, J Bent, J N Bon, B dD'Entremont and H G Farish, Esqrs Dep proth'y MjunjJ ington, Esq—Ditto for

the di  
May  
geant  
com'r  
Robt  
S S I  
J Let  
Nord  
nou,  
Esqr  
Dep  
ern  
H G  
Hau  
Bust  
Argy  
ner,  
Co  
JacV  
Esqr  
Fari  
  
H  
S  
at A  
sion  
2nd  
at A  
for  
3d  
mon  
sha  
ber  
Co  
W  
the  
R  
P  
Do  
In  
W  
H  
CH  
R  
W  
er  
J  
C  
tr  
M  
C  
J

the dis of Shelburne, held at Shelburne on the 2d Tuesday of May and 2d Tues of Sept.—asst Judges, G White, W B Sargeant, J V Buskirk and T Crowell, Esqrs. Dep proth'y and com'r for taking special bail on Actions dep'g in the S. Court, Robt Bingay, Esq—Justice of the Peace, G White, Cns Rot; S S Poole, B D'Entremont, J V Buskirk, Jas Dore, J N Bond, J Lent, Eb Crowell, H G Farish, T Crowell, J Bingay, G V Norden, A Landers, J Kelly, B Bingay, M Huntingdon, J McKinnon, C Campbell, J Barclay, Robert Currie, John Homer, Esqrs. R Bingay, Esq C P. Sur. Judge, Gid White, Esq. Dep Reg of Deeds for the Eastern dis.—Bingay, Esq Western ditto, H G Farish, Esq. Col'rs of Imp and Ex.—Yarmouth, H G Farish, Esq—Shelburne,———Esq—Weymouth, R Hankinson, Esq. Pro Col'rs of Customs,—Shelburne, J V Buskirk—Weymouth, R Hankinson—Barrington, J Homer—Argyle, J McKinnon; Yarmouth, A V S Forbes, Esqrs. Coroner, G Bingay, Esq.—Dep Postin'r, Jas Nelson, Esq Shelburne. Comm'rs of Schools, dis. Shelburne.—Rev Dr T B Rowland Jac V Buskirk, Thos Crowell, Jno Homer and Wm Robertson Esqrs. Dis. Yarmouth, Rev T A Grantham, S S Poole, H G Farish Jno McKinnon, and Jas Lent, jr Esqrs.

COUNTY OF CAPE BRETON.

High Sheriff for the County, C R Ward, Esq.

Supreme Court sits at Sydney on the last Tues. of Aug and at Arichat on the 1st Tues. of Sept. Inferior Court and Sessions of the Peace for the Northern dis. sits at Sydney on the 2nd Tues of March, and 4th Tues of Oct; for the Southern dis. at Arichat on the 2d Tues of April and 2d Tues of Nov; and for the Western dis. at Port Hood, on the 3d Tues April and 3d Tues of Nov. Chief Justice of the Inferior Courts of Common Pleas, and President of the Courts of Sessions, J G Marshall, Esq. Asst Judges, T Crawley, L Kavanagh, J Leaver, C Hubert, F B Tupper, J Jean & Wm Watts, Esqrs. act'g prth'y for the County, C E Leonard, Esq Sydney. Dep proth'ys, at Arichat, W Madden, Esq. at Mubou, J L Tremain, Esq. Justices of the Peace, J G Marshall, Cns. Rot.; A Dodd, Thos Crawley, R Gibbons, C. Hubert, J Leaver, C E Leonard, R McKinnon, P H Clarke, L Kavanagh, J Jones, C McNab, J Campbell, J Dodd, J Cameron, G S Ford, B Tupper, D Taitt, J Higgins, H Ingraham, A Grant, S Plant, G Cosset, W Gammel, Wm Watts, Wm Bannerman, J Ball, G Brown, A Madden, J Duffus Hugh McDonald, Jno McKean, N Paint, N Martin, T E Chandler, J L Tremain, J Jean, P DeLisle, J S Ingraham, Robt Gammel and Irad Hart, Esqrs. Registrars of Deeds—Western dis. J L Tremain—Eastern do, J Turnbull—Southern do. C R Ward, Esqrs. Acting Col. of Customs and Comp. J W Benn, Esq. Col'rs of Impost, Excise and Light Duty, Chas E Leonard, Esq Sydney—J L Tremain, Esq N W district—J Turnbull, Esq Southern do. Dep Postmasters, Chas McAlpine, Esq Sydney—Jno Fuller, Esq Arichat. Surveyor Genl of Lands and Sur. Judge, Thos Crawley Esq. Coroners. Jno Smith, and Joseph Road.

Holf, John  
lfrey, G S  
Esq C P.  
P Rudolf,  
Officer, A  
f, Esq.  
on Esqrs.  
Miller, Jno

Chief Jus-  
sident of  
e, Esq.

of June,  
e Peace,  
; and at  
Asst.  
Bonnell,  
Special  
Esq.—

Jones, M  
V Bay-  
son, J M  
ell, jr. E  
F Ran-  
Chesley  
Neiley,  
James,  
on, Esq  
ett, Esq  
Young,  
Col of  
dsmith,  
F Bon-

dge, H  
James  
F Bon-

July.—  
f Yar-  
ues. of  
Jud-  
H G  
tto for

Comm'rs of Schools— N E dis. Rev C Ingles, J G Marshall, Thos Crawley, C E Leonard and Wm Duffus Esqrs. S E dis Rev Mr Shaw, Rev Mr Potevin, Law Kavanagh, C Hubert, Dr Madden, S E dis Rev Mr Lawlor, Wm Watts, J McKeen, Jno L Tremain and Nat Clough, Esqrs.

STAFF OF THE ARMY

In Nova Scotia, under the command of his Excellency Lieut. Genl. \*Sir PEREGRINE MAITLAND, KCB.

\_\_\_\_\_ , aids de camp; Capt. P Maitland, 74 f mil. sec'y; Lt col H B Harris, h p 86 f dep adj gen; Lt col W Beresford, h p 31 f dep q m gen; maj J Bazalgette, h p 98 f. brig maj; dep com gen Geo Damerum, Esq; asst com gen C A Clarke Esq; dep asst com gens Jas Slade, O Goldsmith, W Low, C Williams, G F Haversaat, Esqrs; assistant commissary general of accounts A Vieth, Esq; deputy assistant commissary gen of accts A Grant and Chas Swain, Esqrs; J Blair, Esq bar. mast.; Doctor Hogg, Insp of Hospitals; J Carter, Esq apoth. to the forces; Doctor Fogo, Ordnance Surgeon; lieut cols D McDougall, h p 85 f W G Cochran, h p 103 f Insp Field Officers of Militia.

Garrison of Halifax—Lieut J MacColla, town major; rev'd J T Twining, dd. chaplain.

Windsor—Arthur McDougall, Esq bar. mast.

Annapolis—J Norman, Esq dep. ord. storekeeper; Dr G Shiels, hosp. asst.; Rev J Milledge, off'g chaplain.

Cape Breton—Lt Saml Rigby, bar. mast.

Officers of H. M. Ordnance.

J W Tapp, Esq, storekeeper. H Ince, Esq dep storekeeper. C H Fife, 1st clerk. J Forrester, 2d do. J E White, 3d do. W H Tapp, jr do. J Rigby, clerk bar. branch. C N Fife, foreman of carpenters. J Plummer, armourer. W Dalling, overseer of labourers. J Anderson, gate porter.

Engineer Department.

G Nicolle, col commanding. G West, captain. C McKenzie and S H Wentworth, lieuts. R Creed, clk of works. J G Toler, clk & draftsman. Wm Rogers, T Goudge and J G Creed, clks. Wm McDowall, master mason; W Gossip, master smith; Edw Pryor, master carpenter; G Hamilton, foreman of labourers; P Dowling and G Bellows, office keepers and messengers

OFFICERS OF THE ARMY.

Royal Artillery.	T Grantham	Royal Engi-	C MacKenzie
Lt Col A Bredin	Lieuts	neers.	52d (Oxford-
Major	T Slade, q. m.	Col. G Nicolls	shire)
G Cobbe	J Griffith, adjt	Capt. G West	Lt. Infantry.
Captains	J E Tapp	Lieuts	"Hindoostan"
P D Stewart,	Sgt M Fogo MD S H Wentworth		"Vinniera"

"Co  
"B  
"Fuen  
n  
"Ciud  
go"  
"Sal  
"V  
"N  
"M  
"O  
"To  
"Pe  
"Wa  
C  
Sir G  
GCI  
L  
Jas Fer  
M  
\*J Me  
\*J Cro  
Ca  
\*G F  
S D Pr  
\*G Gav  
Wm B  
\*G H  
W S M  
R D K  
Geo M  
Henry  
Lord C  
L  
R K H  
A We  
J Bent  
Wm V  
W O C  
J H B  
Walter  
G W  
Rich I  
C F N  
G C S  
E  
W J M  
S R S  
Wm C  
C W  
G M  
J Alle  
A Tal  
W A

Marshall,  
s. S E dis  
Hubert, Dr  
Keen, Jno

xcellency  
CCB.

de camp;  
arris, h p  
dep q m  
com gen  
sq; dep  
Williams,  
y general  
mmissary  
Blair, Esq  
rter, Esq  
urgeon ;  
h p 103 f

a major ;

eper; Dr  
plain.

er. CH  
H Tapp,  
arpenters.  
J A. der-

enzie and  
er, cik &  
Wm Me-  
or, master  
ed G Bol-

enzie  
Oxford-  
ire)  
Entry.  
postan"  
iera"

"Corunna"	Hen S Davis	E W Blencowe	Thos E Kelly
"Busaco"	F G Bull	Geo Anderson	F H Byrne
"Fuentes d'O- nor"	*Pay m'r J Win- terbottom	P m'r B Scott	W Warren
"Ciudad Rodri- go" "Badajoz"	Adj J Bentham, Lt	Adj E Sutherland	*J Kincaid
"Salamanca"	Q m'r J Morgan	Q m'r J Murchison	*G Simmons
"Victoria"	*Sg J B Gibson	Surg J Shorland	Geo Buller
"Nivelle"	*As sg R Tut- hill, MD	As sg A McAn- drew	1st Lieuts
"Orthes"	„ Chas Brown	„ A W Murray	*Jro Fry, dep pm
"Toulouse"	Facings buff—	Facings yellow ;	A MacLachlin
"Peninsula"	Lace Silver	Lace silver.	WSR Norcott, ad
"Waterloo."	Agents	agents	Hor Stewart
Colonel	Greenwood & Co	Greenwood & Co	J S Cameron
Sir G T Walker,	36th REGT,	Rifle Brigade.	Wm Sullivan
GCB. Lt gen	Colonel	"Copenhagen"	J R Groves
Lt Col	Sir Jos Fuller, G	"Monte Video"	Robt Walpole
Jas Ferguson	CH Lt gen	"Roleia"	Ho. Shirley
Majors	Lt Col	"Vimiera"	W Dolphin
*J McNair	*J Fullerton, CB	"Corunna"	Chas F Napier
*J Cross	Majors	"Busaco"	W S Tollemache
Captains	Hen White	"Barrosa "	2d Lieuts
*G F B St John	A Cairncross	"Fuentes d'O- nor."	Roy Jones
S D Pritchard	Captains	"Ciudad Rodri- go" "Badajoz"	J Dolphin
*G Gawler	Wm Hulme, m.	"Salamanca"	T W Smith
Wm Blois	Rich Gethin	"Victoria"	Jas Martin
*G H Love	J W S Waller	"Nivelle"	Rich S Smith
W S Moorsom	Rich Spratt	"Nive"	R H FitzHerbert
R D King	E E Hill	"Orthes"	R W D Flamstead
Geo Montagu	Wm L Carey	"Toulouse"	R Wilbraham
Henry Deedes	Wm Ouseley	"Peninsula"	Sid Beckwith
Lord C J Russell	C B Cumberland	"Waterloo."	Alex Monro
Lieuts	Wm Hope	Col. in Chief	P m'r W Holden
R K Hill, dep pm	Peter Cleape	*Arthur, Duke of	Adj W S R Nor- cott, 1st Lt
A Wetherall	Lieuts	Wellington, KG	Q m'r *Wm Hill
J Bentham, adj	L F Jones	GCB. & GCH.	*Sg J Burke, MD
Wm Vivian	Wm Kidman	field marshall.	*Asst sg M J
W O Gunning	E Sutherland, adj	Col comm.	Bramley
J H Baldwin	A Robertson, d p	*Sir A F Barnard	„ R M N Robert- son
Walter Butler	P S Nugent	KCB & KCH.	Regimentals
G W Birch	A McKenzie	maj gen	green. Facings
Rich French	Jos Telford	Lt Col	black.
C F Norton	Thos Ablot	*Amo God-ill Ro	Agents
G C Swan	P F de Meuron	bert Norcott, C.	Greenwood & Co
Ensigns	Robt Bush	B. col	
W J M Hughes	J W A Wrag	Major	This mark (*)
S R Streatfield	R B Warren	*W Eccles	prefixed to the
Wm Chaloner	Ensigns	*Jos Logan	names of Officers
C W Forester	Don O'Brien	Captains	denote their hav-
G M Yorke	E H Finney	*W Johnston	ing been at Wa-
J Allen Vigors	Jas Clyde	*A Stewart	terloo.
A Tal Eustace	R S Murray	*J C Hope	The words sub-
W Amh Hale	Edw Barclay	*J Molloy	scribed to the ti-
	E Hathaway		ties of Regiments

as " Peninsula," " Waterloo," &c. denote the honorary distinctions permitted to be borne on their colours and appointments, i. e. commemoration of their services.

**OFFICERS OF HIS MAJESTY'S SHIPS.**

**Sir Charles Ogle, Bt. Rear Admiral of the Red,** commander in chief of his Majesty's Ships and Vessels employed, and to be employed, at Halifax, or the coast of North America, &c. &c. &c.

**HUSSAR**—Sir Chas Ogle, Bt. Rear Admiral: Edw Boxer, Esq. captain; Philip Gosling, Esq. commander; W B Cowyer, Esq. sup com.; Rich Haig, Esq. sec'y; Lieuts Geo Brown, Andrew Smith, Robt G Welch, and Wm Berwell, F L; 1st Lieuts maines, Wm Haig and W L Dawes; master, John Jones; surgeon, W Donnelly, M D. sup sur. I McKay, asst Thos Johnson; sup asst Alex Sanderson; chaplain, Rev Hugh Jones; purser, Arch Peirie.

**TYNE, 28**—captain, Sir Richard Grant, Kt; Lieuts Wm Gordon, Smyth Griffith and Wm H Hallowell; 1st Lt maines, Robt Leonard; master, Edw Rose; surgeon, John Gooch; asst do John M Brown; purser, David Clow.

**COLUMBINE, 18**—commander, John Townshend, Esq; Lieuts W H Henderson and Edmund Wilson; master, Jno Yule; surgeon, W A Delziel; asst Alex Lyon; purser, Robt Wilson.

**RINGDOVE, 18**—commander, Chas English, Esq; Lieuts Jas V Baker and W H Jarvis; master, Thos Warwick; surgeon, Hen Kelsal; purser, Wm Hamilton, acting.

**ROSE, 18**—commander, Eaton Travers, Esq; Lieuts Arthur Wavefield and Thos Phillips; master, J R Fittock; surgeon, John W Reid; asst, E B Rowley; purser, Geo Starr.

**MANLY, 12**—Lt com. H W Bishop; master, Isaac Mowle; asst surg Jas Macallister.

**MILITIA OF NOVA-SCOTIA.**

His Excellency, Lieut General Sir PEREGRINE MAITLAND, K C B. Commander in Chief.

Aides de Camp to the Commander in Chief.

Lieut. Colonels Duncan McDougall, Wm G Cochran and Charles Yorke, Inspecting Field Officers.

Adj General, Lieut Col. John McColla. Qr Master General, Major Edward Wallace. Judge Advocate Gen. Hon S B Robie.

*Artillery.*

1st Volunteer Company—Major, Richard Tremain. Captain, Rich Scott. 1st Lieuts. James Cogswell and Joshua Lee. 2d Lieutenant Richard Tremain jr.

2d Volunteer Company—Captain, James Tremain. 1st Lieut. Wm Foster. 2d Lieut. Alex Farquharson. Surgeon, Matthias Hoffmann

1st Halifax Regiment.	A Richardson,	Jas G Boggs	1st Lieuts
	Captains.	Thos Lydiard	Henry Cunard
Lieut Col.	Jas McNab	Chas DeWolfe	S Binney
G N Russell	Wm Pryor, jr	J W Madden	J C Hume
Majors.	John Slayter	Thos Adams	J H Noonan
John Dempster	Jas Black	Law O'C. Doyle	A W Flieger

A B Rich  
F Stevens  
Robt Ros  
Saml Lyd  
Thos Kin  
Adj  
Qr mr G  
Sarg A W  
Ast do W  
2d Halifax  
giment  
Lieut  
Sami Cur  
maj  
Chas J H  
Capt  
W M Pe  
J A Barr  
G B Crei  
C D Arch  
M G Fras  
M Tobin  
Thos To  
John Cur  
M Tobin  
1st Li  
J H Clar  
John E S  
J S Clar  
H Pryor  
adj. J A  
captain  
Qr mr. J  
Surg W  
M D  
3d Halifax  
giment  
Lieut  
Saml Al  
ma  
J Leand  
John E  
— Glad  
Cap  
Jas Ly  
Edw Cu  
H Y Me  
S W A  
Geo Ha  
A Tayl  
P Ogilv  
Thos G  
A Dun  
Edw L

y distinctions  
i. commemo-

P.S.  
Red, com-  
nd Vessels  
x, or the

Boxer, Esqr  
E. q sup con-;  
Smith, Robt G  
s, Wm Haig  
nelly, M. D.  
Sanderson;

Wm Gordon,  
obt Leonard;  
an M Brown;

Esq; Lieuts  
le; surgeon,

Lieuts Jas V  
Hen Kelsal;

Arthur Wake-  
ohn W Reid;

Mowle; asst

9.  
AITLAND,

n and Charles

eneral, Major  
Robie.

Captain, Rich  
2d Lieutenant

1st Lieut.  
Hies Hoffman  
st Lieuts  
ory Cunard  
inney  
Hume  
Noonan  
V Fliieger

A B Richardson  
F Stevens  
Robt Romans  
Saml Lydiard  
Thos Kinnear  
Adj  
Qr mr G T Fillis  
Surg A Wallace  
Ast do W Grigor

2d Halifax Re-  
giment.  
Lieut Col.

Sami Cunard  
major  
Chas J Hill  
Captains

W M Deblois  
J A Barry, adj  
G B Creighton  
C D Archibald

M G Fraser  
M Tobin, jr  
Thos Tobin  
John Cunard

M Tobin, 2d  
1st Lieuts.  
J H Clark  
John E Starr

J S Clarke  
H Pryor  
adj. J A Barry,  
captain,

Qr mr. J Dupuy  
Surg W B Aimon  
MD

3d Halifax Re-  
giment.  
Lieut Col

Saml Albro  
majors  
J Leander Starr  
John E Fairbanks

— Gladwin  
Captains  
Jas Lyons  
Edw Cunard

H Y Mott  
S W Albro  
Geo Hawbolt  
A Taylor

P Ogilvie  
Thos Grassie, adj  
A Dunbrack  
Edw Low

J Allen  
J Chamberlain  
1st Lieuts  
W Hall  
G Glawson

R Allen  
C Marks  
E Greenwood  
S Breedin

Daniel Starr  
W J Starr  
John Harvie  
Wm Albro

R D Clarke  
2d Lieuts  
John Leslie  
W Anderson

J Kennedy  
J Brown  
R A Logan  
C H Belcher, q m

G P Van Buskirk  
W Guild  
John Linsie  
Alex Taylor

E Duckett, jr pm  
J Y Patrick  
T Kenney  
S G Morse

J H Anderson  
H Leslie  
Adj. T Grassie,  
captain.

Qr. Master, C.H.  
Belcher. lt  
Pmr E Duckett, jr

Surg. S Head, MD  
As. of. C Head

4th Halifax Re-  
giment.  
Lt Col J Albro  
major

W A Black  
Captains  
J Albro, jr  
F Dauphney

E Pryor, 3d adjt  
John Parker  
Wm M Allan  
Thos Pyke

D Fletcher  
A Kieth  
1st Lieuts  
J Dauphney

Azor Stevens  
H Yeomans, jr  
Edw Allison  
adj E Pryor, capt

Qr mr T Hoster-  
man  
Surg J Stirling

Colchester Re-  
giments.  
1st BATT.  
Lient Col.

James Kent  
Major  
A L Archibald  
Captains

Jas Phillips  
Wm Rutherford  
Jas D Blair  
Jos Fuhon

John Gammill  
Jas Yuill  
W C Eaton, adj  
Geo Corbet

1st Lieuts  
Wm Phillips  
Jas Ruthford  
Jas Dunlap

John Watson  
S Archibald, 3d  
Wm Logan  
Wm Blair, 3d

Andw Yuill  
F Parker  
Alex Kent  
2d Lieuts.

Jno Fisher  
T Putnam  
Wm McCulley  
A King

John Gammill, 2d  
Robt Kent  
Jas Pollock  
Adj W C Eaton,

capt  
Q mr  
Sg. D B Lynds  
2d BATT.

Lt Col  
Robt Dickson  
major

Thos J Brown  
Captains  
Jas Dickson  
J Flemming

J Wier  
A Campbell  
John Crow  
R McLelland

R Spencer  
A Thompson  
E D Dickson, adj  
Robt B Dickson

Jas D Baird  
Alex Vance  
1st Lieuts  
Rufus McNut

D Dower  
Wm Baxter  
Alex Conkey  
Robt Flemming

Thos Corbett  
J Urquhart  
H Munro  
Jno McGrath

Wm Vance  
Jac. Marsh  
Geo Ross  
J Archibald

Jas Wilson  
2d Lieuts  
D V Crow  
Alex Blair

Sam Waugh  
W H Wilson  
M Waugh  
Edw Langeal

D H Crow  
Robt Spencer  
Chas D M'Curdy  
Jno McKay

J M' L Dickson  
Robt Corbet  
Jas M Spencer  
Wm Fletcher

Robt Murray  
D M'Langlan  
Pat Marsh  
Adj. Elish. DeW

Dickson  
Q mr. W Catten  
Surg Edw Carritt

Pictou Regi-  
ments.  
1st BATT.  
Lt Col

Geo Smith  
major  
Robt McKay



<b>Captains</b>	D McDonald	Luke Jervise	W Atwater
John Douglas	John Finlayson	Allan McDonald	Spin. Whitman
Geo McDonald	A McDonald	Alex McDonald	2d Lieuts.
R Patterson	John Smith	Don Chisholm	D Martin
John Patterson	D Mc Lennan	J McMillan	J Jamieson, jr
Wm Corbett	T McPherson	Jas Randall	John Mitchell
John Gordon	Thos Munro	Ang McDonald	J Mcintosh
Wm Mortimer	1st Lieuts	S McDonald	A McPherson
D Cameron	Simon McKay	Wm Hierlihy	Jno Stewart
Geo Campbell	Simon Fraser	A M Chisholm	Jno Newton, jr
Anthony Smith	Robt Walker	A D Harrington	Wm Hart
1st Lieuts	Alex Fraser	2d Lieuts	Jno Jost
W Rankine, art'y	Wm Fraser	J W Forrestall,	Adj Robt Boles
Mat Langill	D McDonald	H McLennan	Qr m'r Jno Jost
J Matheson	Jas W Corbett	Jas Taylor	Sg W Cantrill
David Davison	Don McDonald	S McDonald	
Saml Archibald	Wm Chisholm	A Kennedy	<b>Cumberland</b>
Jas Perang	Don Robinson	D Dorley	<b>Regiment.</b>
Jas Dawson	Don Munro	Ang McDonald	Lt Col
Wm Clark	2d Lieuts	Aug O'p'den	Thos Roach
Don Fraser	Jacob Olding	Alex McDonald	major
2d Lieuts	Alex Grant	James Wilkie	And Foshner
Alex Scott	Hugh Fraser	J J Marshall	Captains
Thos McCabe	Don Sutherland	Adj J McDonald	Wm Chapman
David Ross	John Fraser	Sg A McDonald	T Chapman, adj
Jas McGill	Thos Copeland	2d BATT.	Geo King
R McDonald	Jas Fraser	Lt Col R M Cutler	Henry Purdy
Mat Patterson	Peter Ross	major	R Mc G Dickey
Jas Crichton	Paul Forster	Isaac Wyde	B Purdy 2d
C Patterson	Don McDougald	Captains	Dan King
Jas Robson	Adj J Holmes,	A Atwater	Jas Roberts
H Douglas	Qm'r A Fraser	Jas Lyle	Jos Black
Wm Campbell, jr	Sg D Finlayson	C Archibald	Thos Logan
Wm Mathieson	<b>County of Syd-</b>	J K McKeen	1st Lieuts
A McKenzie	<b>ney Regiment.</b>	Chris Elder	Josh Hunter
F McDonald	1st BATT.	Sam McKeen	Gains Lewis
Jno Graham	Lt Col	D Atwater	G Lawrence
Jno Campbell	John Munro	W O Heffernan	Saml Purdy
Geo Grant	major	Jno Foster	R Commo
Jas Primrose	R N Henry,	John Grant	W McNab
Wm Murdoch	Captains,	1st Lieuts	B Chapman
adj Geo McDon-	D McQueen	Thos Peart	Jos Morse
ald, capt	Don McNeill	Edw Morris	Brown Pipes
Qm'r. H Hutton	J G Pealody	Wm Slopel	Anth Taylor
Sg G Johnstone	W H Irish	Alex Martin	R Barker
2d BATT.	D Cunningham	Jno G Peart	2d Lieuts
Lt Col	Jos Symonds	Jno Hudson	B Stevens
J Carmichael	R Murray	Jas Tory, jr	Joshua Bebu
major	D McDonald	Jos Maxwell	Amos Eaton
D Murray	Jo Jervise	M Taylor	Jos Oxley
Captains	Alex McDonald,	Wm Sinclair	Jno Dotten
John Olding	Saml Symonds	Wm Bedford	Ths Chapman, 2d
A Chisholm	1st Lieuts	Wm Sandon	Ezra Bent
Rod'k McKay		Jas Keag	H Chapman, 3d

Jas Cotes  
 Tim Weat  
 J G Purdy  
 Dan Pungst  
 ——— Soom  
 Adj T Oke  
 capt  
 Surg E Pur  
 County J  
 Regime  
 1st BA's  
 Lt. Co  
 W H Sley  
 major  
 N Jenkins  
 T Cochran  
 Captai  
 Wm S Che  
 John Mann  
 Jas Smith  
 Anth Sha  
 John Elder  
 E Sandford  
 Dan Lock  
 Dan Wier  
 J Songster  
 R McTaff  
 T Parker  
 Its Lieut  
 J M Smith  
 M Wright  
 D Mosher  
 Elias Payza  
 Jacob Antl  
 I Dimock  
 J Cochran  
 C Curren  
 2d Lieut  
 T McTate  
 F Cochran  
 Jos North  
 G Brightm  
 Jas Sterlin  
 A Harvie  
 Geo Hunt  
 P Walker  
 Thos Allin  
 E Carver  
 S C Palme  
 H Goudge  
 Adj J Son  
 Qm T O'E  
 Sg Jos Wi

Atwater  
 pin. Whitman  
 2d Lieuts.  
 Martin,  
 Jamieson, jr  
 John Mitchell  
 McIntosh  
 McPherson  
 o Stewart  
 o Newton, jr  
 Wm Hart  
 o Jost  
 dj Robt Boles  
 r mr Jno Jost  
 g W Cantrill

*Cumberland  
 Regiment.*  
 Lt Col  
 hos Roach  
 mnjor  
 and Forshner  
 Captains  
 Wm Chapman  
 Chapman, adj  
 eo King  
 enry Purdy  
 McG Dickey  
 Purdy 2d  
 an King  
 os Roberts  
 os Black  
 hos Logan  
 1st Lieuts  
 osh Hunter  
 ains Lewis  
 Lawrence  
 nd Purdy  
 Commo  
 McNab  
 Chapman  
 os Morse  
 own Pipes  
 nth Taylor  
 Barker  
 2d Lieuts  
 Stevens  
 oshua Bebu  
 mos Eaton  
 os Oxley  
 o Dotten  
 hst Chapman, 2d  
 zra Bent  
 Chapman, 3d

Jas Cotes  
 Tim Weatherby  
 J G Purdy  
 Dan Paisley  
 ————  
 Adj T Chapman  
 capt  
 Surg E Purdy

*County Troops  
 Regiments.*  
 1st BATT.  
 Lt. Col.  
 W H Sley  
 major  
 N Jenkins  
 T Cochran  
 Captains.  
 Wm S Church  
 John Manning  
 Jas Smith  
 Anthy Shaw  
 John Elder  
 E Sandford  
 Dan Lockhart  
 Dan Wier  
 J Songster, adj  
 R McHaffey  
 T Parker  
 Its Lieuts.  
 J M Smith  
 M Wright  
 D Mosher  
 Elias Payzant  
 Jacob Anthony  
 I Dimock  
 J Cochran  
 C Curren  
 2d Lieuts  
 T McLatchy  
 F Cochran  
 Jos Northrup  
 G Brightman  
 Jas Sterlin  
 A Harvie  
 Geo Hunter  
 P Walker  
 Thos Alline  
 E Carver  
 S C Palmer  
 H Goudge  
 Adj J Songster  
 Qm T O'Brien  
 Sg Jos Wiley

2d BATT.  
 Lt Col Rich Smith  
 major  
 F Denmore  
 Captains.  
 J McLehlan  
 Benj Smith  
 Thos Ellis  
 Wm O'Brien  
 J Withrow  
 C Putnam  
 Alex McPhee  
 1st Lieuts.  
 J Woodworth  
 J Denmore  
 John Grant  
 John Sterling  
 Thos Wallace  
 Edw Murphy  
 Alex Ferguson  
 2d Lieuts.  
 Don Grant  
 Jno Denmore  
 Sam Meek  
 J Withrow  
 John Wallace  
 D Eltinger  
 John McPhee  
 Arch Cox  
 Jas Realy  
 Evan McPhee  
 Thos Knowles  
 Adj B Smith  
 Q mr M Casey  
 Sg F C Pike

*King's County  
 Regiments.*  
 1st BATT.  
 Lt Col  
 Henry Gisser  
 major  
 W C Moore  
 Captains  
 J Wells  
 D Cogswell  
 J Morton  
 J E Crane  
 A Beckwith, adj  
 T Barnaby  
 Jona Crane  
 J H Gisher  
 N Woodworth  
 J Newcomb

L V Buskirk  
 1st Lieuts.  
 J H Chipman  
 Saml Chipman  
 E M Terry  
 J F Allison  
 John Belcher  
 Elias Calkin  
 W C Campbell  
 O Cogswell  
 Judah Wells  
 J C Magee  
 Wm Pizeo  
 R W A Moore  
 D Barbidge  
 Wm Ritchie  
 Saml Sharpe  
 John Prescott  
 J H Allison  
 Jer Tupper  
 E Barbidge  
 2d Lieuts.  
 T B Campbell  
 Wm Starr  
 Thos Welton  
 B Donaldson  
 Hen Gisher  
 J F Hutchinson  
 Rich Starr  
 Wm Miller, jr  
 Dan Huntley  
 Wm Beckwith  
 Saml Lowden  
 Dan C Moore  
 Adj A Beckwith  
 Qmr H Chipman  
 Sg W Baxter  
 Chaplain, Rev R  
 Norris

2d BATT.  
 Lt Col S Dennison  
 major, J N Crane  
 Captains  
 Chas Brown  
 Jon Graham  
 Eben Bishop  
 Enoch Forsyth  
 J Fuller  
 E Forsyth  
 J Johnston  
 D Rathburne  
 1st Lieuts.  
 C Randall

Elijah Fowler  
 S Avery, jun  
 C H Rand  
 P M Benjamin  
 2d Lieuts.  
 S Parminster  
 O Hamitko  
 Jas Bragg  
 Geo Terry  
 A Bishop  
 Jos Caldwell  
 Dan S Dennison  
 Jas Woodman  
 Eliphilet Fuller  
 Adj J M Terry  
 Qmr J D Harris  
 Sg W Webster

*Parrsborough  
 Corps.*  
 Lt. Col.  
 Jas Ratchford  
 Captains.  
 J Ratchford, jr adj  
 Jesse Lewis  
 Oam Lewis  
 A Thompson  
 Alex Fullerton  
 1st Lieuts.  
 B Fullerton  
 W E Crane  
 Eben Kerr  
 C E Ratchford  
 W Spratt  
 Wm Marsh,  
 2d Lieuts.  
 Robt Lewis  
 Edw Morrisoa  
 John Pettis  
 Ad J Ratchford jr  
 Qmr J Fuhrer jr

*East Annapolis  
 County Regts.*  
 1st BATT.  
 Lt Col T Ritchie  
 major  
 Timothy Ruggles  
 Captains.  
 E Thorne  
 Wm Davis  
 G Robinson  
 J Robertson  
 S Cowling

Robt Spurr	Jas Hall	B Robichau	John Williams
E Whitman	Jno Shaffner	J Terrio	D Bodreau
S Thorne	H McGee	Fras Bournuf	J Hatfield
A Troop	Hen Dunn	2d Lieuts	S D'Entremont
1st Lieuts.	Saml Langley	Benj White	P D'Entremont
S McCormack	Jno Banks	Caprean Martin	C Porter
Wm Saunders	Adj R Stone, cap	Sed. Robishau	Sil Porter
Jacob Bogart	Q mr Jno Ross	Ciriac Belivo	M Jeffery
Wm Harris	Sg J V Buskirk	Benose White	Jno Rider
S Parker		Adj H Barr,	2d Lieuts
S Chipman	<i>West Annapolis</i>	Q mr H Barr, jr	C Blanvelt
A Fowler	<i>Co's Regts.</i>		G V Buskirk
Edw Hinkle	1st BATT.	<i>Shelburne Re-</i>	W Larkin
Isaac Dimas	Lt Col	<i>giments.</i>	J B Bodreau
2d Lieuts	W F Bonnell	1st BATT.	Jos J Porter
Jon Woodberry	major, Wm Muir	Lt Col J B Buskirk	H Nickerson
H Gisher	Captains	Captains	Chas McLarrin
J H Ditmars	R Turnbull	J G Enslow, adj	M D'Entremont
Weston Hall	J Timpany	Benj Perry	Adj DV Norden
Geo Baricax	T H Ruggles	Wm Holden	capt
Jas LeCain	D Rutherford	Jas Barclay	Q mr Jas Lent
Jno Hicks, 2d	Edw Morgan	P Spearwater	
Jno Kennedy	J E Mor on, adj	J D W White	3d BATT.
Constant Morse	B McConnell	1st Lieuts	Lt Col J. o. Bingay
Adj Geo Robert-	1st Lieuts	Saml Lock	Major
son, capt	Chas Tucker	C Campbell, jr	G B V Norden
Q mr Jas Gray	Chas Budd	Wm McMillian	Captains
Sg Edm Phelan	Hen Stewart	Thos Johnston	Geo Bingay, adj
2d BATT.	Chas C Moody	Jas Bingay	Jas Dane
Lt. Col.	Israel I. Beat	Jno King	D Pattin
B R Beardsley	Jno Ward	2d Lieuts.	Israel Kelly
major	2d Lieuts	Rich King	Benj Lewis
Eze'l Cleaveland	MR Hutchinason	D Matthews	John Cook
Captains.	Jones Morehouse	Wm McAlpine	M Killum
Robt Stone, adj	W G Taylor	Jas Griffin	A Huntingdon
Jas Lynon	Alpheus Jones	Geo Boole	1st Lieuts
E Phinney	Adj J E Morton	W Muir	Jas Allen
Arch Hicks	Q mr W Taylor	Adj I G Enslow,	Thos Tooker
O Shaffer	2d BATT.	capt	M Shaw
H Parker	Lt Col S Doncett	Q mr J Tottin	Jo Shaws
Foster Rolcor	major	2d BATT.	G Bond
J Armstrong	Saml Campbell	Lt Col	J Pattin
1st Lieuts.	Captains	Abram Lent	Z Churchill
Jno Ferris	H Barr	Major	R Robins
Jno Hodge	Saml White	J McKinnon	2d Lieuts
Jas Gates	Jos Terrio	Captains	C Lewis
Geo Pich	F A Robichau	D V Norden, adj	D Gowen
C Banks	J Porter	Jas Hatfield	J Hil'on
Zeb Phinney	Jno Holden	W Whitehouse	A Raymond
Wm Banks	1st Lieuts	J J D'Entremont	J Cann
S Leonard	Jos White	J Servan	J Crosby
2d Lieuts.	Jos Commo	M Amero	H Huntingdon
C Marshall	Geo Taylor	D Rodreau	Stayley B. own
Jno Smith	J Parrey	Theo K Frost	H Chipman
		1st Lieuts	

Jos S  
Edw  
Ad G  
Q mr  
Sg H  
4th  
I  
W B S  
C  
J P D  
Jas S  
J Sarge  
J Oslo  
K Rey  
1st  
S Ken  
Jethro  
E Kno  
Josh A  
2d  
Thos C  
Jas Ken  
J C Cr  
Adj J  
Q mr S  
Queen  
Reg  
L  
Jos Fre  
m  
J R De  
J Whit  
Ca  
J Rob  
Jon De  
Wm B  
John C  
W Fre  
Jas N  
Mat P  
1st  
F Tup  
T Free  
N Free  
Wm H  
J L D  
John N  
Sam F  
Thos  
Wm N  
Z Free  
S Free  
St p  
Geo P

hn Williams  
 Bodreau  
 Hatfield  
 D'Entremont  
 D'Entremont  
 Porter  
 Porter  
 Jeffery  
 no Rider  
 2d Lieuts  
 Blanvelt  
 V Buskirk  
 V Larkin  
 B Bodreau  
 osJ Porter  
 I Nickerson  
 Chas McLarrin  
 I D'Entremont  
 Adj D V Norden  
 capt  
 Q mr Jas Lent  
  
 3d BATT.  
 Lt Col Jno Bingay  
 Major  
 G BV Norden  
 Captains  
 Geo Bingay, adj  
 Jas Dane  
 D Pattin  
 Israel Kelly  
 Benj Lewis  
 John Cook  
 M Killum  
 A Huntington  
 1st Lieuts  
 Jas Allen  
 Thos Tooker  
 M Shaw  
 Jo Shaws  
 G Bond  
 J Pattin  
 Z Churchill  
 R Robins  
 2d Lieuts  
 C Lewis  
 DGowen  
 J Hillon  
 A Raymond  
 J Cann  
 J Crosby  
 H Huntington  
 Stayley Brown  
 H Chipman

Jos Stoneman  
 Edw Huestis  
 Ad GBingay, cap  
 Q mr J Tooker  
 Sg H G Farish  
 4th BATT.  
 Lt Col  
 W B Sargeant  
 Captains  
 J P Doane  
 Jas Smith  
 J Sargeant, adj  
 J OsLorne  
 K Reynolds  
 1st Lieuts  
 S Kenney  
 Jehro Covill  
 E Knowles,  
 Josh Atwood  
 2d Lieuts  
 Thos Coffin  
 Jas Kenney  
 J C Crowell  
 Adj J Sargeant,  
 Q mr S D Doane  
 Queen's County  
 Regiment.  
 Lt Col  
 Jos Freeman  
 majors  
 J R Dewolf  
 J Whitman  
 Captains  
 J Roberts  
 Jon Dewolf  
 Wm B Taylor  
 John Campbell  
 W Freeman, adj  
 Jas Moston  
 Mat Parks  
 1st Lieuts  
 F Tupper  
 T Freeman  
 N Freeman  
 Wm Irwin  
 J L Darrow  
 John McViker  
 Sam Freeman  
 Thos P Calkin  
 Wm McGill  
 Z Freeman  
 S Freeman  
 Stepen Mack  
 Geo Pearson

N McIntosh  
 Jno Fraser  
 S P Freeman  
 2d Lieuts.  
 John Cobb  
 Jos Ford  
 Geo Freeman  
 Jno McDonald  
 A McDonald  
 Geo Freeman  
 Robt Darrow  
 Jno H Freeman  
 Elk Knowles  
 Jas A Taylor  
 Hen Godfrey  
 Jno Kemp'on  
 Robt Rol erts  
 Adj W Freeman,  
 capt  
 Q mr John H De-  
 waal  
 Sg A Webster  
 Ast do D Grieve  
 County Lunen  
 burg Regts.  
 1st BATT.  
 Lt Col JC Rudolf  
 Majors,  
 Wm Rudolf  
 Garret Miller  
 Captains.  
 M Morash  
 Jno Zwicker  
 C Oxner  
 Jno Anderson  
 H Kaulback  
 C J Redolf  
 P Arrenberg  
 P W James  
 F Oxner  
 Jos Falt  
 Casper Finner  
 1st Lieuts  
 Geo Anderson  
 Mich Rudolf  
 Geo Creighton  
 Fras Rudolf  
 Wm Drew  
 Chas Born  
 M Ernst  
 Nich Oxner  
 Thos Boehner  
 2d Lieuts  
 Jno Harley

Philip Mason  
 Jos Rudolf  
 John Hebb  
 Geo Fancy  
 John Ernst  
 Fras Boehner  
 Jno Frederiek  
 Garret Miller  
 Jos Miller  
 Adj GT Solomon  
 Q mr D S Grant  
 Sg G Jacobs  
 2d BATT.  
 Lt. Col.  
 Jno Heckman  
 Majors,  
 John Evans  
 J Creighton  
 Jas S Thomson  
 Captains.  
 Geo Burgoyne  
 Hen Ernst, adj  
 G Ernst  
 John Hiltz  
 Jas Walker  
 P Strum  
 Jno Hunt  
 Geo Langille  
 Thos Zwicker  
 Alex Johnston  
 Jno G Thomson  
 1st Lieuts  
 Jno Zwicker  
 Geo Ernst  
 Geo Zwicker  
 Robt Y coney  
 G Metzler  
 Jno B Chomitus  
 Jno Cr adie  
 J Hertle  
 Jos Gates  
 Chas Evans  
 John Nens  
 Jos Thomson  
 2d Lieuts  
 A Zwicker  
 Jos Dier cock  
 Wm Light  
 F Hiltz  
 A Leutz  
 Jos Lord'ey  
 I D Gildert  
 Edw Zwicker  
 M Publicover

Adj H Ernst  
 Qm J B Comingo  
 Sg Jno Harley  
 CAPE BRETON.  
 1st Battalion  
 1st Regt.  
 Lt Col  
 Chas E Leonard  
 Major  
 Peter H Clarke  
 Captains  
 Saml Plant  
 Hen W Crawley  
 Wm Gannell  
 Sam Rigby, adj  
 Rich Brown  
 C McAlpine  
 Wm R Ball  
 Chas M Dodd  
 Edm M Dodd  
 C Barrington  
 Jno Scott  
 John Ferris  
 1st Lieuts  
 John Bagnail  
 Francis Dixon  
 Luke Hall  
 Lewis Brown  
 Geo Rigby  
 Josh Weeks  
 Wm Gannell  
 Chas Danareq  
 Arnold Holmes  
 Jno Hill  
 Jno Martell  
 Peter Moore  
 Syd Barrington  
 Jno Marshall  
 Dan Currie  
 Alex Campbell  
 Thos Penbro'e  
 Neill McNeill  
 D McDonald  
 Wm Cook  
 Aug McGilvery  
 Jno McEachran  
 Rich Gibbons, jr  
 adj S Rigby, capt  
 Pmr P DeLysle  
 Qr mr John Ball  
 Sg Jno White  
 as do Wm Haire  
 2d Batt 1st Regt  
 Lt col

major	Lieuts	Jno Mathewson	A McDonald
J Duffus	John R Smith	Jno Smith	Dun Campbell
captains	Desire Boudroit	Geo Bissot	Don Campbell
Jon Jowes	Jno Balleine	Jno Proctor	D Cameron
G McKay	A Brymer	N McMullan	A McIntyre
Wm Duffus	J F Wilson	Don Campbell	Hugh McKay
Don McLeod	F Boudroit	F McPherson	Jno McKay
J McKay	P LeGeyst	J Morrison	Adj J L Tremain
Don Logan	Jos Wilson	R McPherson	
lieuts	B G G Potts	Don Chisholm	
J McNeill	Victor Terriot, jr	Alex Murchison	<i>2d Batt 3d Regt</i>
P Hume	Isaac Paon	adj D Peltier, cap	majors
Alex McKinnon	Thos du Bois	<i>1st Batt 3d regt</i>	Wm McKeen
A Muaro	Sira Babin	E Kavanagh	Hen Taylor
Wm Jones	Benj Terriot	captains	
Kenneth M'Leod	Chas Wood	H McMullin	Rou McKinnon
R Buckmaster	Chas Terriot	Nath Clough	Jno Campbell
Don Carmichael	N Le Mesurier	Jno Campbell	A McDonald
J Brown, adj	adjt Thomas E	Alex McDonald	A McLellan
Jno McNeill	Chandler, capt	Wm Watts	Wm McLellan
Samuel Peters	Q mr Jno Walsh	Jno Murray	Jno McDonald
Jno Blake	Sg And. Madden	Jno McKeen	A McDonald
Dan Logan	<i>2d Batt 2d Regt</i>	Law O'Byrne	lieuts
Jno Fraser	Lt Col	Robt Gray	Jno Ross
Jas Sparling	L Kavanagh, jr	Robt Patterson	Jno McKinnon
Robt Sutherland	major	J L Tremain, adj	Jno McFarling
adj J Brown, cap	Chas M McNab	Lts	Jas McLellan
	captains	Phil L Brocq	A Smith
<i>1st Batt 2d Regt</i>	Jno Cameron	A McEmmis	H O Queen
Lt Col	Dougald McNab	Chas McEmmis	Chas Boudrot
Clement Hubert	Danl Peltier, adjt	H McDonald	Dun McRae
major J Janvrin	Jao B McNeill	T McDonald	M McDonald
captains	Thos Sinons	Jno McDonald	Wm Campbell
M Doyle	M Kavanagh	A Chisholm	A McLellan
T E Chandler, adj	Don Matthewson	A McDonald	A McInnis
Peter de Carteret	And Le Brock	D Grouchy	Jno McLellan
John Ferrer	lieuts	Jas McDonald	R McDonald
John Fuller	Justin Maabergot	Jas Hawley	Adj D Campbell
E F Le Montais	Dav McPherson	Alex Benton	
Wm Creighton	F Boulton	Jas Doyle	
Thos Le Noir	Jno M cDougall		

(FINIS.)

A McDonald  
Dun Campbell  
Don Campbell  
D Cameron  
A McIntyre  
Hugh McKay  
Jno McKay  
Adj J L Tre-  
main

2d Batt 3d Regt

majors  
Wm McKeen  
Hen Taylor  
captains  
Rou McKinnon  
Jno Campbell  
A McDonald  
A McLellan  
Wm McLellan  
Jno McDonald  
A McDonald  
lieuts  
Jno Ross  
Jno McKinnon  
Jno McFarling  
Jas McLellan  
A Smith  
H O Queen  
Chas Boudrot  
Dun McRae  
M McDonald  
Wm Campbell  
A Me Lellan  
A Me Innis  
Jno Me Lellan  
R McDonald  
Adj D Campbell

