

**CIHM
Microfiche
Series
(Monographs)**

**ICMH
Collection de
microfiches
(monographies)**



Canadian Institute for Historical Microreproductions / Institut canadien de microreproductions historiques

© 1994

Technical and Bibliographic Notes / Notes techniques et bibliographiques

The Institute has attempted to obtain the best original copy available for filming. Features of this copy which may be bibliographically unique, which may alter any of the images in the reproduction, or which may significantly change the usual method of filming, are checked below.

L'Institut a microfilmé le meilleur exemplaire qu'il lui a été possible de se procurer. Les détails de cet exemplaire qui sont peut-être uniques du point de vue bibliographique, qui peuvent modifier une image reproduite, ou qui peuvent exiger une modification dans la méthode normale de filmage sont indiqués ci-dessous.

- Coloured covers/
Couverture de couleur
- Covers damaged/
Couverture endommagée
- Covers restored and/or laminated/
Couverture restaurée et/ou pelliculée
- Cover title missing/
Le titre de couverture manque
- Coloured maps/
Cartes géographiques en couleur
- Coloured ink (i.e. other than blue or black)/
Encre de couleur (i.e. autre que bleue ou noire)
- Coloured plates and/or illustrations/
Planches et/ou illustrations en couleur
- Bound with other material/
Relié avec d'autres documents
- Tight binding may cause shadows or distortion along interior margin/
La reliure serrée peut causer de l'ombre ou de la distorsion le long de la marge intérieure
- Blank leaves added during restoration may appear within the text. Whenever possible, these have been omitted from filming/
Il se peut que certaines pages blanches ajoutées lors d'une restauration apparaissent dans le texte, mais, lorsque cela était possible, ces pages n'ont pas été filmées.

- Coloured pages/
Pages de couleur
- Pages damaged/
Pages endommagées
- Pages restored and/or laminated/
Pages restaurées et/ou pelliculées
- Pages discoloured, stained or foxed/
Pages décolorées, tachetées ou piquées
- Pages detached/
Pages détachées
- Showthrough/
Transparence
- Quality of print varies/
Qualité inégale de l'impression
- Continuous pagination/
Pagination continue
- Includes index(es)/
Comprend un (des) index

Title on header taken from: /
Le titre de l'en-tête provient:

- Title page of issue/
Page de titre de la livraison
- Caption of issue/
Titre de départ de la livraison
- Masthead/
Générique (périodiques) de la livraison

- Additional comments: /
Commentaires supplémentaires:

This item is filmed at the reduction ratio checked below /
Ce document est filmé au taux de réduction indiqué ci-dessous.

10X	12X	14X	16X	18X	20X	22X	24X	26X	28X	30X	32X
				✓							

The copy filmed here has been reproduced thanks to the generosity of:

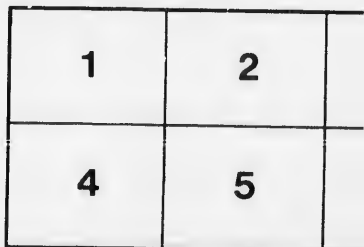
Harold Campbell Vaughan Memorial Library
Acadia University

The images appearing here are the best quality possible considering the condition and legibility of the original copy and in keeping with the filming contract specifications.

Original copies in printed paper covers are filmed beginning with the front cover and ending on the last page with a printed or illustrated impression, or the back cover when appropriate. All other original copies are filmed beginning on the first page with a printed or illustrated impression, and ending on the last page with a printed or illustrated impression.

The last recorded frame on each microfiche shall contain the symbol \rightarrow (meaning "CONTINUED"), or the symbol ∇ (meaning "END"), whichever applies.

Maps, plates, charts, etc., may be filmed at different reduction ratios. Those too large to be entirely included in one exposure are filmed beginning in the upper left hand corner, left to right and top to bottom, as many frames as required. The following diagrams illustrate the method:



duced thanks

brary

st quality
d legibility
th the

s are filmed
ding on
ted impres-
ate. All
ing on the
impres-
a printed

fiche
"CON-
"END"),

ed at
rge to be
lmed
r, left to
es as
rate the

L'exemplaire filmé fut reproduit grâce à la
générosité de:

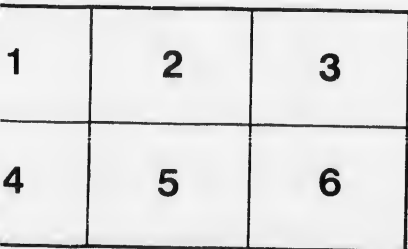
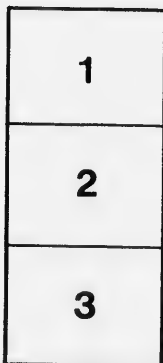
Harold Campbell Vaughan Memorial Library
Acadia University

Les images suivantes ont été reproduites avec le
plus grand soin, compte tenu de la condition et
de la netteté de l'exemplaire filmé, et en
conformité avec les conditions du contrat de
filmage.

Les exemplaires originaux dont la couverture en
papier est imprimée sont filmés en commençant
par le premier plat et en terminant soit par la
dernière page qui comporte une empreinte
d'impression ou d'illustration, soit par le second
plat, selon le cas. Tous les autres exemplaires
originaux sont filmés en commençant par la
première page qui comporte une empreinte
d'impression ou d'illustration et en terminant par
la dernière page qui comporte une telle
empreinte.

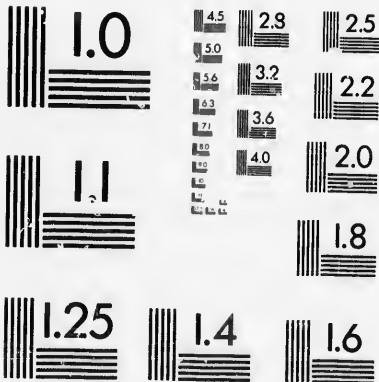
Un des symboles suivants apparaîtra sur la
dernière image de chaque microfiche, selon le
cas: le symbole → signifie "A SUIVRE", le
symbole ∇ signifie "FIN".

Les cartes, planches, tableaux, etc., peuvent être
filmés à des taux de réduction différents.
Lorsque le document est trop grand pour être
reproduit en un seul cliché, il est filmé à partir
de l'angle supérieur gauche, de gauche à droite,
et de haut en bas, en prenant le nombre
d'images nécessaire. Les diagrammes suivants
illustrent la méthode.



MICROCOPY RESOLUTION TEST CHART

(ANSI and ISO TEST CHART No. 2)



APPLIED IMAGE Inc

1653 East Main Street
Rochester, New York 14600 USA
(716) 482 - 0300 - Phone
(716) 288 - 5989 - Fax

A
283.715
N42

DIOCESE OF FREDERICTON.

Diocesan Church Society.

OCCASIONAL PAPER.

No. III.

RESULT OF SPECIAL APPEAL LAST YEAR.

ABOUT this time last year the Lord Bishop issued a Pastoral Letter stating the position of the Funds of the Society, and asking that united and hearty effort should be made to maintain the Missionary Work of the Diocese, and relieve the Society of the debt, which had reached nearly six thousand dollars. This appeal was answered in three different ways: 1st, by increased voluntary contributions to the General Purposes Fund; 2nd, by special contributions to meet the existing deficiency; 3rd, by an increased assessment upon the Missions, and a corresponding reduction in the grants from the Society, so that the current expenditure was brought within the income. The total contributions amounted to nearly \$10,000 (against \$5,700 for the previous year) and the result is that all the obligations of the Society for the current year have been met, and about half of the debt has been paid off.

From this statement it is evident that if the same work is to be maintained this year, and the other half of the debt paid, the same amount of contributions must be made. But here it must be borne in mind that many persons made special donations, which, in some cases, they cannot afford to repeat this year. It is therefore most important that renewed effort should be made to obtain *new subscribers*, and that the *ordinary* subscriptions should be increased in every case where that is possible. It must be constantly borne in mind that the rapidly increasing work of the Church cannot be maintained if people continue to give only the sums they have given in past years and no new subscribers are received.



SUNDAY SCHOOL MISSION BOXES.

During the past year an effort has been made to interest Sunday Schools in the Home Mission Work of the Diocese. Mission Boxes have been issued to all Children who were willing to take charge of them, and two leaflets have been distributed, containing account of work being done in the Missions of Restigouche and Stanley. The money received through the boxes amounted to over \$700, and now that an interest has been awakened among the Children, it is hoped that many more may be willing to take these boxes, and so aid in a very practical way to extend the work of the Society. It is a great satisfaction to see that the very first year the Children have begun to work together they have raised a sum sufficient to maintain the Services of the Church in two Missions which, perhaps, might otherwise have been left without them. It is an interesting fact to note here that at one time the Sunday School Children in the United States supported nine Missionary Bishops.

NEW MISSIONS.

There are before the Society at the present time at least three New Missions which must be opened as soon as ever funds can be secured to maintain them. These are Wakefield, Grand Lake, and Baie Verte. Besides these, Aberdeen, Albert, Grand Falls, and Madawaska have been without Services the past year, and several Missions are so large that one Missionary cannot possibly serve them satisfactorily. When it is remembered that the average stipend of the Missionary is only \$745, and that one third of the Missions (17 out of 50) have no parsonage, it is quite clear that every one must help with their money, and take their own share of the labour, if the Missionary Work of the Diocese is to be fully and satisfactorily maintained.

SOME SPECIAL OBJECTS OF D. C. S.

Besides the maintenance of Mission Work, the Church Society has several special objects, to some of which it may be desirable to direct attention in this paper.

No. 2. Is the Divinity Scholarship Fund.— This is intended to aid those who may be under preparation for the Ministry, especially sons of Clergymen. The grants may not exceed \$200 per annum, and are made upon such terms and at such collegiate institutions as the Board of Home Missions shall determine, subject to the approval of the Lord Bishop of the Diocese. The present capital of this fund is \$1200, and one grant of \$60 is made out of the income.

No. 7. Is the Incapacitated and Aged Clergy Fund.— This is intended to provide pensions, payable half-yearly in advance, to any Clergymen

who have served at least seven consecutive years in this Diocese, and who are unable to discharge the duties of their office through mental or bodily infirmity. All applications have to be accompanied by a recommendation from the Bishop of the Diocese, and are determined by the Executive Committee, who have power to grant a pension not exceeding \$400 a year, upon condition that the applicant resigns his cure, with all its emoluments. The capital of this Fund is \$5,600, and the income is appropriated — but is not of itself sufficient — to pay the only pension which the Diocese is liable for at present.

No. 11. Is the Fund to assist in the Education of the Children of the Clergy. — This is intended to assist in the education of children of Clergymen in the Diocese, or of children of those who may have died, or retired with the Bishop's approval, on the ground of age or infirmity. The entire management is in the Executive Committee, who may make grants for one or more years until the recipient shall have reached the age of eighteen years. The capital of this Fund is \$1500; no grant has yet been made.

GRANT FROM THE SOCIETY FOR THE PROPAGATION OF THE GOSPEL.

Since the last of these papers was issued, the S. P. G. grant to this Diocese has been reduced (\$1000) ^{two} ~~one~~ thousand dollars. It is still, however, more than the voluntary contributions from the whole of the Diocese. The amount thus withdrawn every year must be in some way made up if the work of the Church is to be maintained.

*Issued by order of the Executive Committee,
June, 1881.*

"GLOBE" PRESS.



