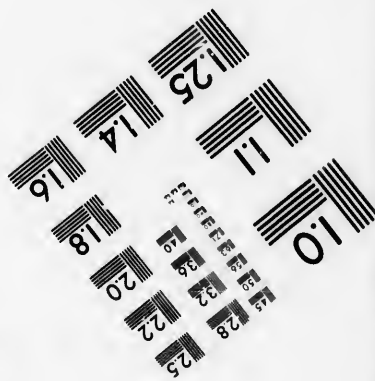
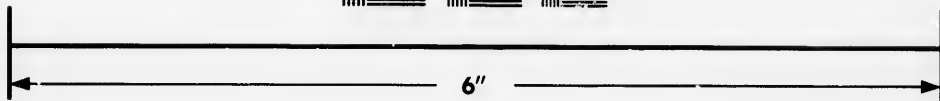
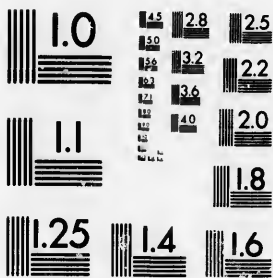


**IMAGE EVALUATION  
TEST TARGET (MT-3)**



**Photographic  
Sciences  
Corporation**

23 WEST MAIN STREET  
WEBSTER, N.Y. 14580  
(716) 872-4503

**CIHM/ICMH  
Microfiche  
Series.**

**CIHM/ICMH  
Collection de  
microfiches.**



**Canadian Institute for Historical Microreproductions / Institut canadien de microreproductions historiques**

**© 1986**

Technical and Bibliographic Notes/Notes techniques et bibliographiques

The Institute has attempted to obtain the best original copy available for filming. Features of this copy which may be bibliographically unique, which may alter any of the images in the reproduction, or which may significantly change the usual method of filming, are checked below.

L'Institut a microfilmé le meilleur exemplaire qu'il lui a été possible de se procurer. Les détails de cet exemplaire qui sont peut-être uniques du point de vue bibliographique, qui peuvent modifier une image reproduite, ou qui peuvent exiger une modification dans la méthode normale de filmage sont indiqués ci-dessous.

- |  |  |
|--|--|
| <input type="checkbox"/> Coloured covers/<br>Couverture de couleur   | <input type="checkbox"/> Coloured pages/<br>Pages de couleur   |
| <input type="checkbox"/> Covers damaged/<br>Couverture endommagée  | <input type="checkbox"/> Pages damaged/<br>Pages endommagées   |
| <input type="checkbox"/> Covers restored and/or laminated/<br>Couverture restaurée et/ou pelliculée  | <input type="checkbox"/> Pages restored and/or laminated/<br>Pages restaurées et/ou pelliculées  |
| <input type="checkbox"/> Cover title missing/<br>Le titre de couverture manque   | <input checked="" type="checkbox"/> Pages discoloured, stained or foxed/<br>Pages décolorées, tachetées ou piquées   |
| <input type="checkbox"/> Coloured maps/<br>Cartes géographiques en couleur   | <input type="checkbox"/> Pages detached/<br>Pages détachées  |
| <input type="checkbox"/> Coloured ink (i.e. other than blue or black)/<br>Encre de couleur (i.e. autre que bleue ou noire)   | <input checked="" type="checkbox"/> Showthrough/<br>Transparence   |
| <input type="checkbox"/> Coloured plates and/or illustrations/<br>Planches et/ou illustrations en couleur  | <input checked="" type="checkbox"/> Quality of print varies/<br>Qualité inégale de l'impression  |
| <input type="checkbox"/> Bound with other material/<br>Relié avec d'autres documents   | <input type="checkbox"/> Includes supplementary material/<br>Comprend du matériel supplémentaire   |
| <input type="checkbox"/> Tight binding may cause shadows or distortion<br>along interior margin/<br>La reliure serrée peut causer de l'ombre ou de la<br>distorsion le long de la marge intérieure   | <input type="checkbox"/> Only edition available/<br>Seule édition disponible   |
| <input type="checkbox"/> Blank leaves added during restoration may<br>appear within the text. Whenever possible, these<br>have been omitted from filming/<br>Il se peut que certaines pages blanches ajoutées<br>lors d'une restauration apparaissent dans le texte,<br>mais, lorsque cela était possible, ces pages n'ont<br>pas été filmées. | <input type="checkbox"/> Pages wholly or partially obscured by errata<br>slips, tissues, etc., have been refilmed to<br>ensure the best possible image/<br>Les pages totalement ou partiellement<br>obscurcies par un feuillet d'errata, une pelure,<br>etc., ont été filmées à nouveau de façon à<br>obtenir la meilleure image possible. |
| <input checked="" type="checkbox"/> Additional comments:/ [Printed ephemera] 1 sheet (verso blank)<br>Commentaires supplémentaires:  |  |

This item is filmed at the reduction ratio checked below/  
Ce document est filmé au taux de réduction indiqué ci-dessous.

10X	14X	18X	22X	26X	30X
<input type="checkbox"/>	<input type="checkbox"/>	<input type="checkbox"/>	<input type="checkbox"/>	<input checked="" type="checkbox"/>	<input type="checkbox"/>
12X	16X	20X	24X	28X	32X

The copy filmed here has been reproduced thanks to the generosity of:

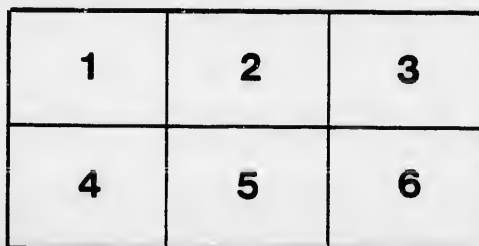
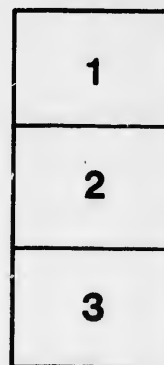
McLennan Library  
McGill University  
Montreal

The images appearing here are the best quality possible considering the condition and legibility of the original copy and in keeping with the filming contract specifications.

Original copies in printed paper covers are filmed beginning with the front cover and ending on the last page with a printed or illustrated impression, or the back cover when appropriate. All other original copies are filmed beginning on the first page with a printed or illustrated impression, and ending on the last page with a printed or illustrated impression.

The last recorded frame on each microfiche shall contain the symbol  $\rightarrow$  (meaning "CONTINUED"), or the symbol  $\nabla$  (meaning "END"), whichever applies.

Maps, plates, charts, etc., may be filmed at different reduction ratios. Those too large to be entirely included in one exposure are filmed beginning in the upper left hand corner, left to right and top to bottom, as many frames as required. The following diagrams illustrate the method:



L'exemplaire filmé fut reproduit grâce à la générosité de:

McLennan Library  
McGill University  
Montreal

Les images suivantes ont été reproduites avec le plus grand soin, compte tenu de la condition et de la netteté de l'exemplaire filmé, et en conformité avec les conditions du contrat de filmage.

Les exemplaires originaux dont la couverture en papier est imprimée sont filmés en commençant par le premier plat et en terminant soit par la dernière page qui comporte une empreinte d'impression ou d'illustration, soit par le second plat, selon le cas. Tous les autres exemplaires originaux sont filmés en commençant par la première page qui comporte une empreinte d'impression ou d'illustration et en terminant par la dernière page qui comporte une telle empreinte.

Un des symboles suivants apparaîtra sur la dernière image de chaque microfiche, selon le cas: le symbole  $\rightarrow$  signifie "A SUIVRE", le symbole  $\nabla$  signifie "FIN".

Les cartes, planches, tableaux, etc., peuvent être filmés à des taux de réduction différents. Lorsque le document est trop grand pour être reproduit en un seul cliché, il est filmé à partir de l'angle supérieur gauche, de gauche à droite, et de haut en bas, en prenant le nombre d'images nécessaire. Les diagrammes suivants illustrent la méthode.

1882 in 8 pages  
1871 in 6 p

# MONTREAL & OTTAWA



## RAIL ROAD.

To the Mayors, Municipal Councillors and Inhabitants interested in the construction of a Railway to connect the City of Montreal with Bytown, by way of the Ottawa.

GENTLEMEN,—However presumptuous it may be considered in us, to speak to you directly through the medium of the press, we trust that the importance of the subject to which we shall immediately allude, and the juncture at which we have arrived, pressing for prompt action and leaving no time for the observance of conventional rules, will be received as our apology.

A Railroad by way of St. Eustache, St. Andrews, and thence by the most direct and favorable line to Bytown, you may now safely reckon upon as a matter of certainty. Indeed the feeling which we just now see manifested by the inhabitants of this City can no longer leave the slightest doubt upon the matter; and if you will only act in concert with our Municipality "The Corporation of Montreal," the question will be speedily settled.

Great and strenuous efforts are being made to bring this important road directly to the Village of Laclaine; where the Laclaine, or rather the Montreal and New York Railroad branches off to Plattsburgh, by way of the Indian Village of Coughnawaga. This proposition we, as Citizens of Montreal repudiate, and the action, which we feel assured will shortly take place in our Corporation in this matter, will convince you that our views accord with those of the citizens generally.

The Citizens of Montreal repudiate this proposition, for the following very conclusive reasons:—

- 1st.—The distance from St. Eustache or Saint Andrews to the City of Montreal, we are assured, is less than to Laclaine, and therefore the distance intervening between Montreal and Laclaine will, we believe, be saved; but this will soon be ascertained and made public.
- 2nd.—By the connection proposed, irrespective of the increased distance, the short piece of road to Laclaine has cost over £120,000, which we trust you will not, any more than ourselves, be prepared to endorse, for the benefit of the Stockholders who have chosen to invest their money there.
- 3rd.—The construction of a Bridge, opposite the City of Montreal, you will already have seen, may be counted upon as settled, and in this important fact before us, will any of you be disposed to swerve one inch from the straightest and the shortest route to that important point in building a Railroad,—especially when it involves the consequences of paying a share of the cost of the Laclaine Road, and travelling round by the Village of Laclaine eight or nine miles out of your way.
- 4th.—Will you and the citizens of Montreal be disposed to amalgamate with the Laclaine Railroad merely to divide our profits from the Ottawa road with them, when we do not require them at all?
- 5th.—Shall we not all receive much larger dividends if the road reaches Montreal by the nearest and straightest line, without being tapered at the village of Laclaine, where necessarily a great, if not the greater, portion of the travel and traffic will be carried off to the State of New York?

This last objection is to us the most conclusive, and by it the citizens of Montreal, we hope, are prepared to stand or fall. Some of us may be accused (as we have already been) of holding property in Montreal, and of being connected with other railroads. We plead guilty to both; and would not take the stand we now do unless deeply interested, in common with our fellow-citizens in Montreal, as landed proprietors, and proprietors also in the railroads which have their termini immediately in front of the town, not nine miles up the St. Lawrence!

The important Portland and Champlain Railroads have their termini opposite the city, and these are matters which, in striking the city of Montreal directly with your Ottawa road, will be for your most serious consideration.

If the proposed connection at the Village of Laclaine can, notwithstanding the objections we have to it, be ultimately shewn to be the only route by which you can reach Montreal, then do you join it—but we know, such not to be the case, and hence our opposition.

We are told that because a few gentlemen, engaged in the Laclaine Railroad, have been the first to obtain a Charter, and that theirs is the only existing one, they must not be deprived of the advantages of it. No one presumes to entertain such a desire. Let them go on and build the road they contemplate, as will no doubt be the case if they have the means, but in the meantime let us all be guarded in making the best possible connections. If your interests had been the chief, the ruling guide of those engaged in the undertaking now under discussion, would not some of you, who were subscribers, have been put into the direction? You can best answer that question yourselves.

Another Charter can and will soon be obtained, and it will be cheaper and better to have a good and proper road, even at the expense of a short delay, than hastily and rashly to engage in one, possibly calculated to subvert other interests than ours. All we can wish and ask is, that you should first be prepared to engage in the undertaking, and we are happy to see that the County of Two Mountains has already taken the initiative, by offering its credit to the amount of £100,000. This example must, and will no doubt be followed by the other Counties interested, and the undertaking will certainly be secured, if your efforts are seconded by our own Corporation.

We have the honor to be,

Gentlemen,

Your obedient servants,

- A. M. DELISLE,
- WILLIAM WORKMAN,
- JEAN BRUNEAU,
- SAMUEL GALE,
- A. LAROCQUE,
- JOHN MOLSON,
- LOUIS RENAUD,
- H. TAYLOR,
- JOS. ROY,
- JAMES LOGAN,
- PAUL JOS. LACROIX,
- JOHN DOBBS,
- J. L. BEAUDRY,
- H. H. LEMOINE.

Montreal, February 10, 1853.

