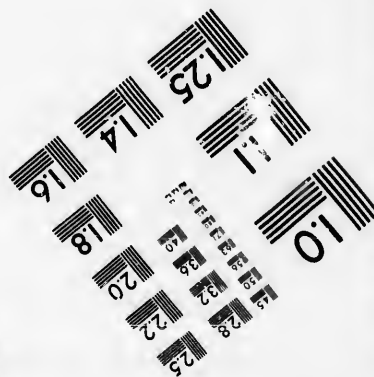
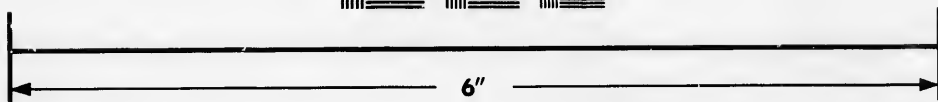
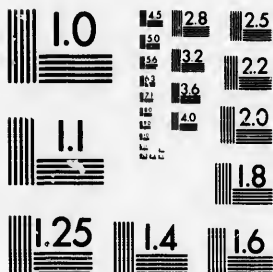


**IMAGE EVALUATION  
TEST TARGET (MT-3)**



**Photographic  
Sciences  
Corporation**

23 WEST MAIN STREET  
WEBSTER, N.Y. 14580  
(716) 872-4503



Technical and Bibliographic Notes/Notes techniques et bibliographiques

The Institute has attempted to obtain the best original copy available for filming. Features of this copy which may be bibliographically unique, which may alter any of the images in the reproduction, or which may significantly change the usual method of filming, are checked below.

L'Institut a microfilmé le meilleur exemplaire qu'il lui a été possible de se procurer. Les détails de cet exemplaire qui sont peut-être uniques du point de vue bibliographique, qui peuvent modifier une image reproduite, ou qui peuvent exiger une modification dans la méthode normale de filmage sont indiqués ci-dessous.

- |  |  |
|--|--|
| <input checked="" type="checkbox"/> Coloured covers/<br>Couverture de couleur  | <input type="checkbox"/> Coloured pages/<br>Pages de couleur   |
| <input checked="" type="checkbox"/> Covers damaged/<br>Couverture endommagée   | <input checked="" type="checkbox"/> Pages damaged/<br>Pages endommagées  |
| <input type="checkbox"/> Covers restored and/or laminated/<br>Couverture restaurée et/ou pelliculée  | <input type="checkbox"/> Pages restored and/or laminated/<br>Pages restaurées et/ou pelliculées  |
| <input type="checkbox"/> Cover title missing/<br>Le titre de couverture manque   | <input checked="" type="checkbox"/> Pages discoloured, stained or foxed/<br>Pages décolorées, tachetées ou piquées   |
| <input type="checkbox"/> Coloured maps/<br>Cartes géographiques en couleur   | <input type="checkbox"/> Pages detached/<br>Pages détachées  |
| <input checked="" type="checkbox"/> Coloured ink (i.e. other than blue or black)/<br>Encre de couleur (i.e. autre que bleue ou noire)  | <input checked="" type="checkbox"/> Showthrough/<br>Transparence   |
| <input type="checkbox"/> Coloured plates and/or illustrations/<br>Planches et/ou illustrations en couleur  | <input type="checkbox"/> Quality of print varies/<br>Qualité inégale de l'impression   |
| <input type="checkbox"/> Bound with other material/<br>Relié avec d'autres documents   | <input type="checkbox"/> Includes supplementary material/<br>Comprend du matériel supplémentaire   |
| <input type="checkbox"/> Tight binding may cause shadows or distortion<br>along interior margin/<br>La reliure serrée peut causer de l'ombre ou de la<br>distorsion le long de la marge intérieure   | <input type="checkbox"/> Only edition available/<br>Seule édition disponible   |
| <input type="checkbox"/> Blank leaves added during restoration may<br>appear within the text. Whenever possible, these<br>have been omitted from filming/<br>Il se peut que certaines pages blanches ajoutées<br>lors d'une restauration apparaissent dans le texte,<br>mais, lorsque cela était possible, ces pages n'ont<br>pas été filmées. | <input type="checkbox"/> Pages wholly or partially obscured by errata<br>slips, tissues, etc., have been refilmed to<br>ensure the best possible image/<br>Les pages totalement ou partiellement<br>obscurcies par un feuillet d'errata, une pelure,<br>etc., ont été filmées à nouveau de façon à<br>obtenir la meilleure image possible. |
| <input type="checkbox"/> Additional comments:/<br>Commentaires supplémentaires:  |  |

This item is filmed at the reduction ratio checked below/  
Ce document est filmé au taux de réduction indiqué ci-dessous.

10X	14X	18X	22X	26X	30X
<input type="checkbox"/>	<input type="checkbox"/>	<input type="checkbox"/>	<input type="checkbox"/>	<input type="checkbox"/>	<input type="checkbox"/>
12X	16X	20X	24X	28X	32X
<input type="checkbox"/>	<input type="checkbox"/>	<input type="checkbox"/>	<input type="checkbox"/>	<input type="checkbox"/>	<input checked="" type="checkbox"/>

The copy filmed here has been reproduced thanks to the generosity of:

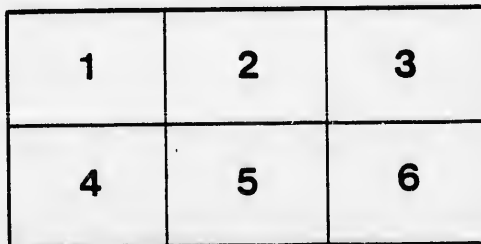
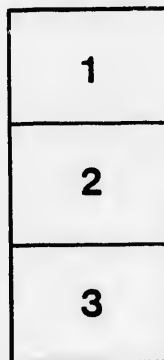
D. B. Weldon Library  
University of Western Ontario  
(Regional History Room)

The images appearing here are the best quality possible considering the condition and legibility of the original copy and in keeping with the filming contract specifications.

Original copies in printed paper covers are filmed beginning with the front cover and ending on the last page with a printed or illustrated impression, or the back cover when appropriate. All other original copies are filmed beginning on the first page with a printed or illustrated impression, and ending on the last page with a printed or illustrated impression.

The last recorded frame on each microfiche shall contain the symbol  $\rightarrow$  (meaning "CONTINUED"), or the symbol  $\nabla$  (meaning "END"), whichever applies.

Maps, plates, charts, etc., may be filmed at different reduction ratios. Those too large to be entirely included in one exposure are filmed beginning in the upper left hand corner, left to right and top to bottom, as many frames as required. The following diagrams illustrate the method:



L'exemplaire filmé fut reproduit grâce à la générosité de:

D. B. Weldon Library  
University of Western Ontario  
(Regional History Room)

Les images suivantes ont été reproduites avec le plus grand soin, compte tenu de la condition et de la netteté de l'exemplaire filmé, et en conformité avec les conditions du contrat de filmage.

Les exemplaires originaux dont la couverture en papier est imprimée sont filmés en commençant par le premier plat et en terminant soit par la dernière page qui comporte une empreinte d'impression ou d'illustration, soit par le second plat, selon le cas. Tous les autres exemplaires originaux sont filmés en commençant par la première page qui comporte une empreinte d'impression ou d'illustration et en terminant par la dernière page qui comporte une telle empreinte.

Un des symboles suivants apparaîtra sur la dernière image de chaque microfiche, selon le cas: le symbole  $\rightarrow$  signifie "A SUIVRE", le symbole  $\nabla$  signifie "FIN".

Les cartes, planches, tableaux, etc., peuvent être filmés à des taux de réduction différents. Lorsque le document est trop grand pour être reproduit en un seul cliché, il est filmé à partir de l'angle supérieur gauche, de gauche à droite, et de haut en bas, en prenant le nombre d'images nécessaire. Les diagrammes suivants illustrent la méthode.

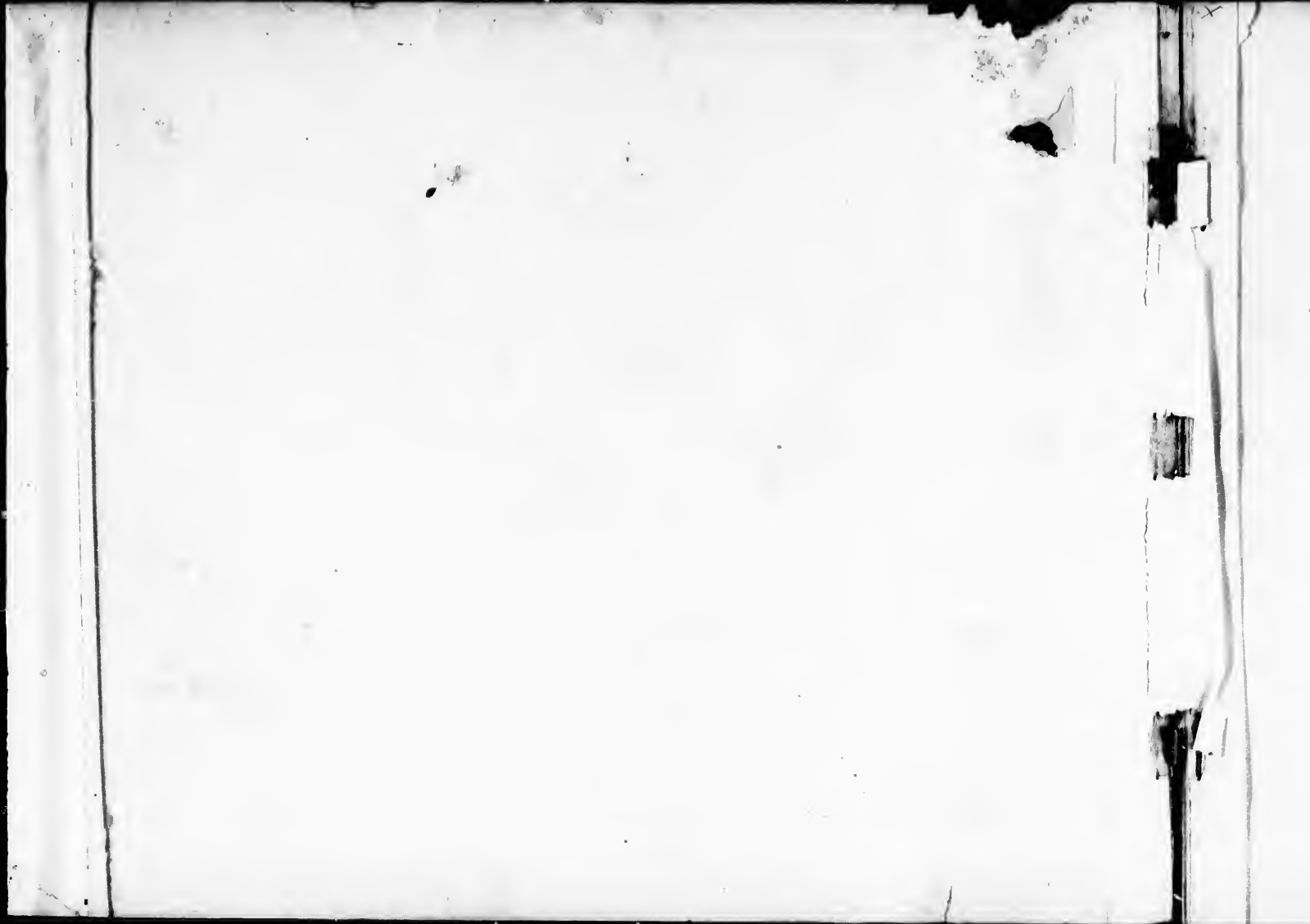
ails  
du  
odifier  
une  
mage

rrata  
to

pelure,  
n à



32X



# To the Trade:

**W**

E again have the honor of presenting to you our New Illustrated Catalogue and Price List.

Skilful workmen, modern machinery, and large factory premises enable us to produce goods equal in design, price and durability to any first-class house in the trade.

## Our Trade Mark



Is on all Hollow Ware of our manufacture, and goods thus stamped we guarantee equal to the best.

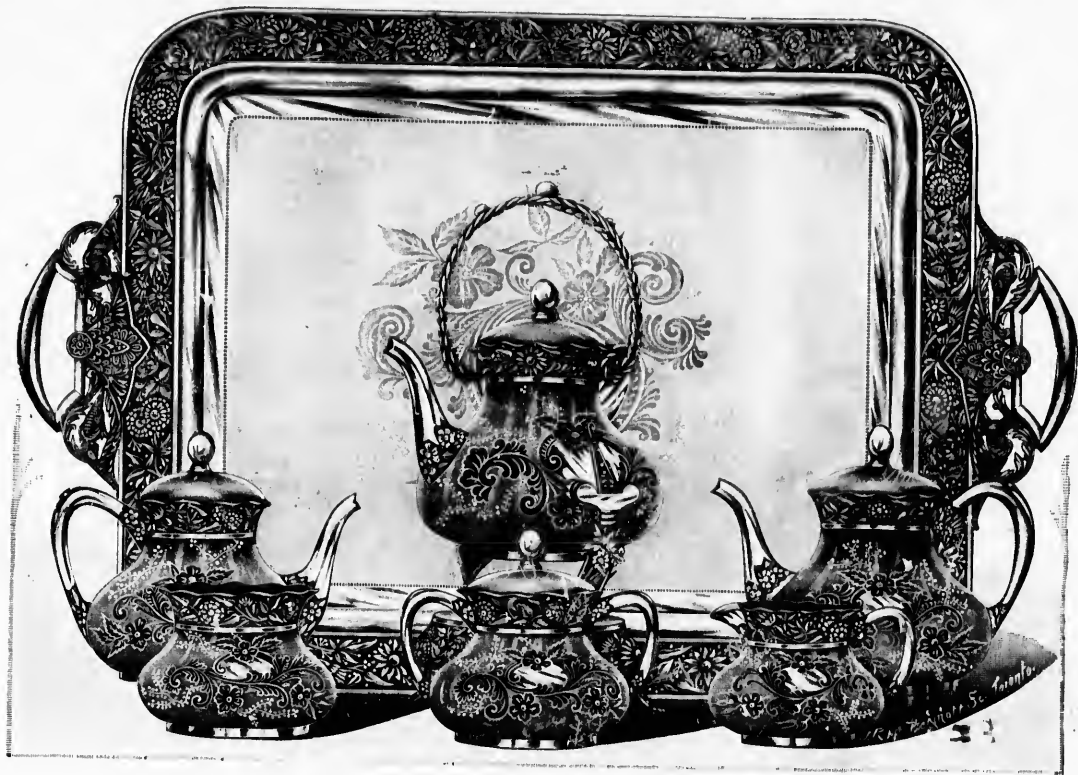
The peculiar requirements of the Plated Ware Trade demand the constant production of new designs. Each Spring and Fall we produce goods that almost supersede those of the previous season; this is more particularly the case with Imported Glassware. The dealer will therefore understand that this Catalogue is not an illustration of all the goods we manufacture, but is issued as a help to those buyers doing business in places not reached by our travellers.

Spoons and Forks stamped "G. Rodgers, at-and N.Y." are plated, burnished and tested under the personal supervision of Mr. G. Rodgers himself, whose forty-five years of experience is ample guarantee of the quality. Dealers are requested to practically test these goods, and compare them with the same grade of other makers, and buy the best. A printed guarantee accompanies each half dozen.

All knives stamped "G. Rodgers, Toronto," are plated 12 dwts. of fine silver to the dozen, are hand-burnished and warranted equal to the best, and superior to knives equally sold by other dealers.

Dealers selling goods of the above brands are authorized to warrant them equal to any in the world.

**THE ACME SILVER COMPANY,  
TORONTO, CANADA.**



**No. 2009. Satin Bright Cut Tea Set**

Kettle, Chased	\$28.00,	Collee,	Tea,	Sugar,	Cream	\$6.00	Slop	\$3.80
No. 66. 24-Inch Waiter, Chased to match	\$55.00	\$14.50	\$11.00	\$8.70	Gold Lined	8.00	Gold Lined	7.80
				No. 66. 24-Inch Waiter,	Plain Shield to match			45.00
						\$120.00		

Set of Six Pieces and Waiter, Bright Cut, Slop and Cream Gold Lined, \$134.00, List

No. 20  
Chased  
Plain or Satin

URNS, SWING KETTLES AND TEA SETS



No. 2009. Spoon Holder

Chased, Gold Lined - - - - - \$7.50  
 Plain or Satin, Silver - - - - - 5.00



No. 2009. Swing Kettle

Chased - - - - - \$28.00  
 Plain, Satin or Burnished - - - - - 20.00



No. 2009. Syrup Cup and Plate

Chased - - - - - \$8.00  
 Plain or Satin - - - - - 7.00



No. 2009. Butter Dish

Chased - - - - - \$7.00  
 Plain Top - - - - - 6.00

Top - - - - - \$5.80  
 Gold Lined - - - - - 7.80  
 45.00





No. 2003. Tea Set, Chased

Set of Six pieces  
With Cream and Slop, Gold Lined  
20-Inch Waiter, Chased to match

\$62.00  
69.00

Coffee, Sugar,  
\$15.00 \$6.30

Tea, Six Half-Pints,  
\$12.10

Tea, Five Half Pints,  
\$11.10

Creamer, \$7.44  
Gold Lined 9.44

Slop \$ 6.20  
Gold Lined 8.20

\$60.00  
20-Inch Waiter, Satin Shield

The same Set, Plain or Satin, Gold Lined  
\$52.00

Gold Lined

No

THE ACME SILVER COMPANY



No. 2003. Butter Dish  
\$0.50



No. 2003. Spoon Holder  
\$6.75



No. 2003. Syrup Cup  
With Plate - - - - - \$8.00



No. 2003. Urn  
Sixteen Half Pints - - - - - \$30.00

Gold Lined - - - - - \$7.50

Slop - - - - - \$ 6.20  
Gold Lined - - - - - 8.20  
- - - - - \$58.00

## THE ACME SILVER COMPANY



No. 2000. Tea Set Chased.

	Coffee.	Tea, five half pints.	Cream,	Slop,	With Cream and Slop, Gold Lined.	Tea, six half pints.	Sugar.	Cream, Gold Lined.	Slop, Gold Lined.
Set of six pieces, \$58.00 -	\$14.00	\$10.50	\$7.50	\$6.00	\$62.00	\$12.00	\$8.00	\$0.50	\$8.00
The same Set in Plain or Satin	-	-	\$30.00	-	-	-	Waiter, Satin Shield	-	\$52.00
			20-Inch Waiter Chased to match	-	-	\$60.00			

THE ACME SILVER COMPANY



Slop, Gold Lined,

\$8.00

\$52.00

No. 2000. Spoon Holder

Spoon Holder - \$6.75  
Gold Lined - 7.75

No. 2000. Syrup Cup and Plate

Syrup and Plate.  
\$8.00

No. 2000. Urn

Urn, Sixteen Half-Pints,  
\$34.00

No. 2000. Butter Dish

Butter  
\$8.50

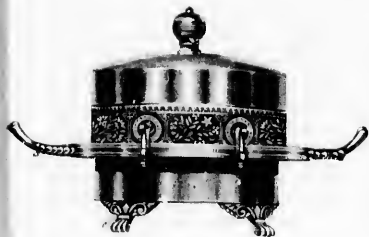
## THE ACME SILVER COMPANY



No. 2001. Tea Set

Set of Six Pieces, Satin or Burnished	\$50.00	Coffee,	Tea, No. 6,	Tea, No. 5,	Sugar,	Cream	-	\$5.75	Slop	-	\$5.00
Set of Six Pieces, with Cream and Slop, Gold Lined	54.00	\$12.50	\$10.50	\$10.00	\$0.00	Gold Lined		7.10	Gold Lined		7.00
No. 60. 24-Inch Waiter, Satin Shield to match					\$45.00						

THE ACME SILVER COMPANY



No. 2001. Butter Dish  
\$5.00



No. 2001. Swing Kettle  
\$20.00



No. 2001. Spoon Holder  
Gold Lined, \$6.00  
Silver, 7.00



No. 2001. Syrup Cup and Plate  
\$7.00

Slop - \$5.00  
Gold Lined - 7.00

## THE ACME SILVER COMPANY



No. 2002. Satin Chased Tea Set

Set of six pieces, Chased - - - \$31.00  
 Spoon, Slop and Cream Gold Lined - - - 35.00

Coffee, - - - \$9.00  
 Tea, - - - \$8.00  
 Sugar, - - - \$5.00

Spoon - \$4.00  
 Gold Lined 5.00

Cream - \$4.00  
 Gold Lined 5.00

Slop - \$4.00  
 Gold Lined 5.00

No. 53. 20-Inch Waiter to match - - - - - \$20.00

Set of Six Piece  
 Spoon, Slop and

# THE ACME SILVER COMPANY



**No. 2005. Tea Set, Chased**

Set of Six Pieces, Chased	\$10.00	Coffee,	Tea,	Sugar,	Cream	Spoon	Slop
Spoon, Slop and Cream Gold Lined	44.00	\$10.00	\$0.00	\$0.00	- \$5.00	- \$5.00	- \$5.00
					Gold Lined 0.50	Gold Lined 0.50	Gold Lined 0.50
Slop - \$4.00							
Gold Lined 5.00							
		No. 60. 20-Inch Waiter to Match			- \$25.00		



THE ACME SILVER COMPANY

## FRENCH COFFEE SETS



No. 2006. French Coffee Set, Burnished

French Coffee Set - - - - - \$26.00

French Coffee Set, Gold Lined - - - - - \$29.00

THE ACME SILVER COMPANY



No. 2010. French Coffee Set, Chased

Chased, Cream Gold Lined	- - - -	\$33.00	Plain or Satin	- - - - -	\$39.00
Deduct \$2.00 if Silver					

\$29.00

-

THE ACME SILVER COMPANY

**SWING KETTLES AND TEA SETS**



No. 2008. Satin Bright Cut Tea Set

Set of Five Pieces, Chased and Gold Lined	-	-	\$40.00	Coffee,	Tea,	Sugar,	Cream,	Spoon,
Set of Five Pieces, Plain and Gold Lined	-	-	35.00	\$10.00	\$0.00	\$7.00	\$7.00	\$7.00
				8.50	8.00	6.50	6.00	6.00
No. 66.	20-Inch Waiter, Chased	-	-	-	-	\$26.00		

No. 200

Chased -  
Satin or Burnish

# THE ACME SILVER COMPANY



**No. 2008. Spoon Holder**

Chased, Gold Lined	- - - -	\$6.50
Chased, Silver	- - - -	5.25



**No. 2008. Syrup Cup and Plate**

Chased	- - - -	\$6.75
Satin or Burnished	- - - -	6.00

Spoon,  
\$7.00  
6.00



**No. 2008. Butter Dish**

Chased	- - - -	\$6.50
Satin or Burnished	- - - -	6.00



**No. 2008. Swing Kettle**

Chased	- - - -	\$26.00
Satin or Burnished	- - - -	24.00



No. 2004

Chased -  
Satin or Burnished

No. 2004. Chased Burnished Tea Set

Set of Six Pieces	\$72.00	Kettle,	Coffee,	Tea,	Sugar,	Cream	\$7.50	Spoon	0
With Cream and Slop Gold Lined	70.00	\$26.00	\$14.00	\$10.50	\$8.00	Gold Lined	0.50	Gold Lined	8
		No. 60.	24-Inch Waiter, Satin Shield				\$34.00		

THE ACME SILVER COMPANY



No. 2004 Syrup Cup and Plate

Chased	- - - - -	\$8.50
Satin or Burnished	- - - - -	7.50



No. 2004. Swing Kettle

Chased	- - - - -	\$26.00
Satin or Burnished	- - - - -	23.00



No. 2004. Spoon Holder

Chased, Gold Lined	- - - - -	\$7.75
Chased, Silver	- - - - -	6.50

Spoon	-	0
Gold Lined	-	8



Five Pieces  
With Cream, S

No. 201. Satin Bright Cut Tea Set

Set of Five Pieces - - - -	\$33.60	Tea, Six Half-Pints	Tea, Five Half-Pints	Sugar	Cream -	\$5.28	Spoon Cup -	\$5
With Cream and Spoon Cup Gold Lined	36.35	\$8.80	\$7.92	\$6.68	Gold Lined	7.28	Gold Lined	5
No. 60. 20-Inch Waiter, Satin Shield - - - -				\$22.00				

# THE ACME SILVER COMPANY



**No. 2011. Plain Satin or Burnished Tea Ware, Five Pieces**

Five Pieces . . . . .	\$27.00	Tea, Six Half-Pints,	Sugar,	Cream - \$4.70	Slop - \$3.90	Spoon Holder, \$4.50
With Cream, Slop and Spoon Holder Gold Lined.	31.50	\$8.00	\$5.85	Gold Lined 6.70	Gold Lined 5.90	Gold Lined, 5.25
No. 60.	20-Inch Waiter, Satin Shield with Handles			\$22.00		



Spoon Cup - 85  
Gold Lined - 5



THE ACME SILVER COMPANY



No. 2007. Tea Set. Chased

Set of Five Pieces, Cream and Spoon Gold Lined . . . . . \$24.00

Set of Five Pieces, Plain Satin, Silver . . . . . \$14.00

No. 53. 18-Inch Waiter, Satin Shield . . . . . \$18.00

# TEA CADDIES, TETE-A-TETE SET AND GIPSY KETTLE



No. 76. Tea Caddy

Silver	-----	\$4.00
Gold Inlaid	-----	5.50

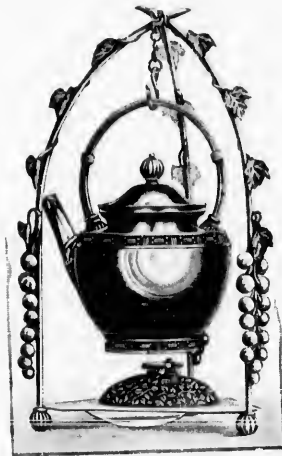


No. 75. Tea Caddy

Silver	-----	\$6.00
Gold Inlaid	-----	7.50



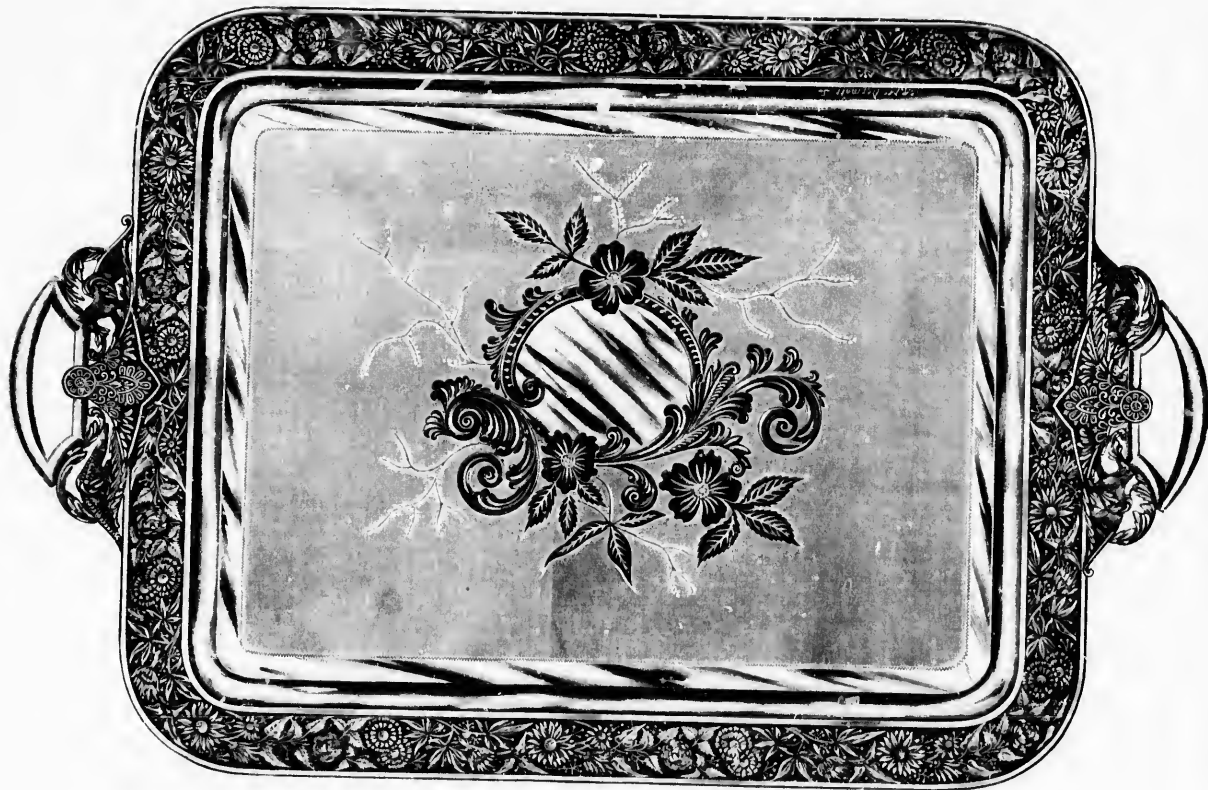
No. 1421. Satin Bright Cut Tete-a-Tete Set  
Satin Bright Cut, Cream Gold Lined - \$12.50



No. 1405. Gipsy Kettle

Satin or Burnished	-----	\$10.00
--------------------	-------	---------

# WAITERS



Chased, 20 Inches

No. 66. Waiter

\$55.00

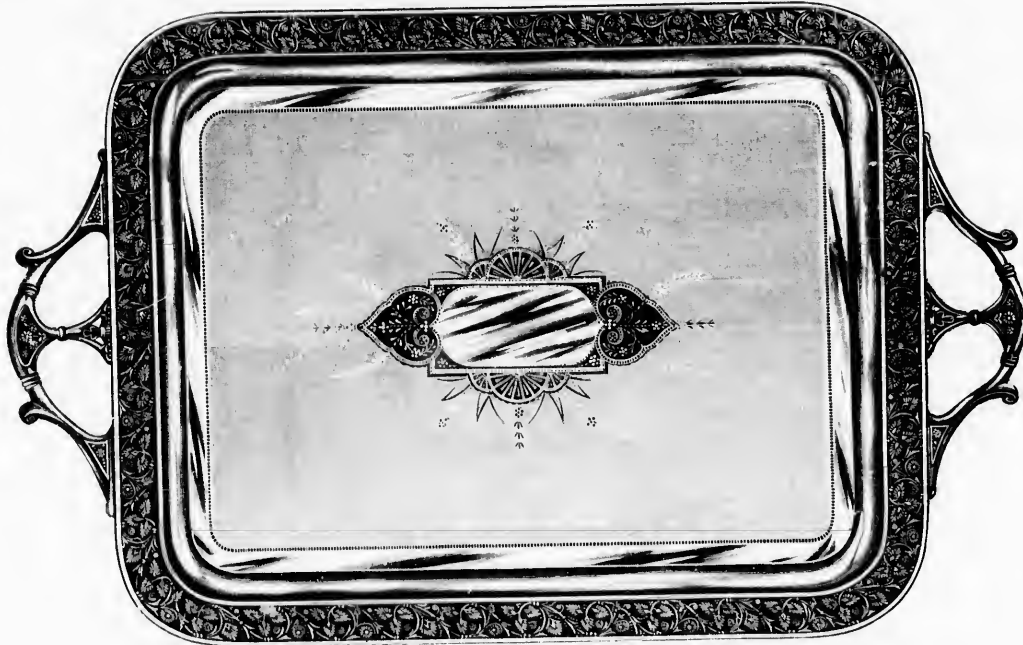
Satin, with Shield

Plate Glass Protectors Furnished at Moderate Prices

\$45.00

11-Inch, Sat  
13-Inch, Sat  
15-Inch, Sat  
17-Inch, Sat  
17-Inch, Sat  
20-Inch, Sat  
22-Inch, Sat  
24-Inch, Sat

# THE ACME SILVER COMPANY



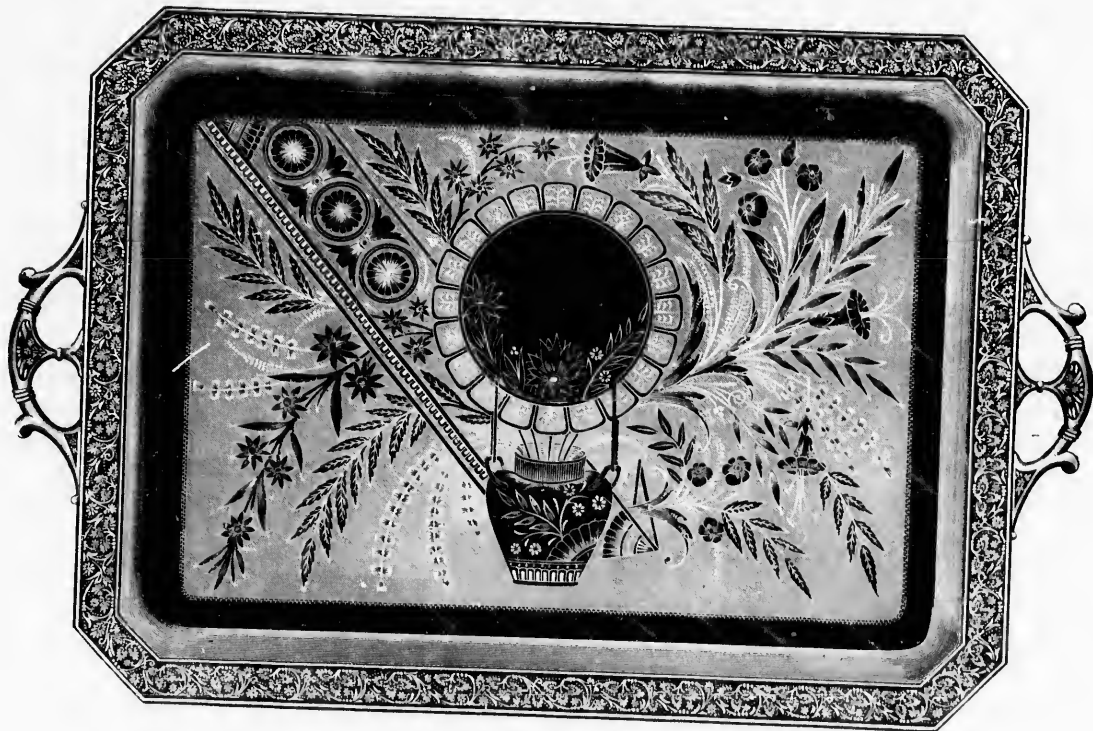
No. 60. Water. Satin Shield

11-Inch, Satin Shield	\$ 7.25
13-Inch, Satin Shield	9.00
15-Inch, Satin Shield	12.00
17-Inch, Satin Shield	14.00
17-Inch, Satin Shield, with Handles	16.00
20-Inch, Satin Shield, with Handles	22.00
22-Inch, Satin Shield, with Handles	28.00
24-Inch, Satin Shield, with Handles	34.00

11-Inch, Chased	\$ 8.25
13-Inch, Chased	10.00
15-Inch, Chased	13.50
17-Inch, Chased	15.50
17-Inch, Chased, with Handles	18.00
20-Inch, Chased, with Handles	27.00
22-Inch, Chased, with Handles	34.00
24-Inch, Chased, with Handles	40.00

\$45.00

THE ACME SILVER COMPANY



No. 58. Waiter

20-Inch, Chased to match any Set

\$50.00

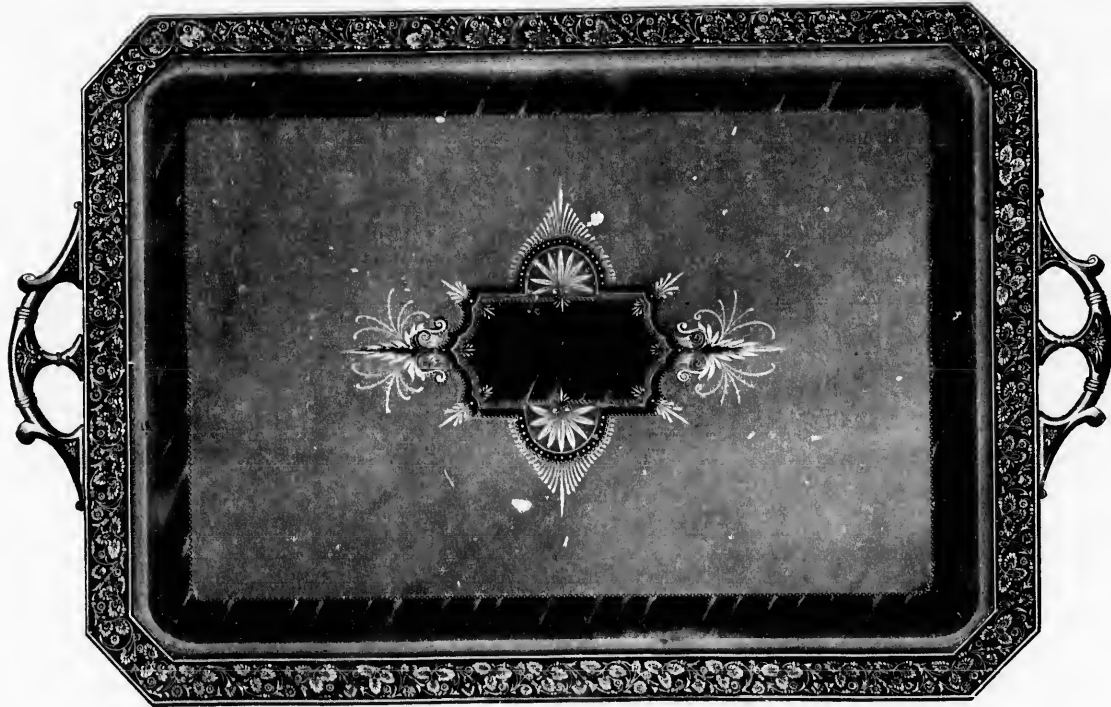
20-Inch, Satin Shield

Plate Glass Protectors Furnished on all Waiters at Moderate Cost.

\$40.00

24-Inch, Satin

THE ACME SILVER COMPANY



No. 58. Waiter

24-Inch, Satin Shield

\$37.00

24-Inch, Chased

\$45.00

\$40.00

Plate Glass Protectors Furnished at Moderate Cost

# THE ACME SILVER COMPANY



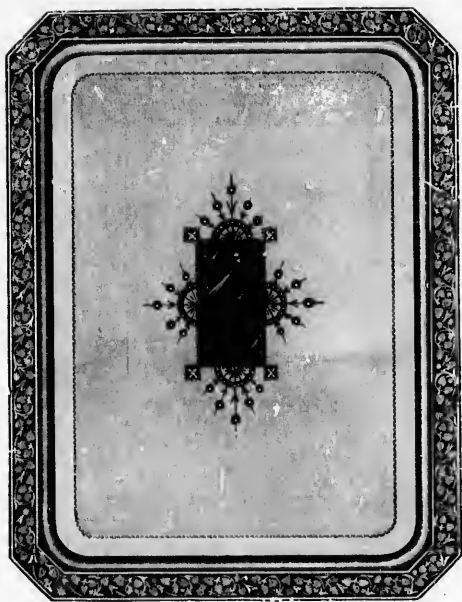
22-Inch, Chased ..... \$28.00  
 Satin, with Shield ..... 25.00

No. 66. Waiter

18-Inch, Chased ..... \$22.00  
 18-Inch Satin, with Shield ..... 20.00

Plate Glass Protectors Furnished at Moderate Cost

11-Inch, Satin  
 12-Inch, Satin  
 13-Inch, Satin  
 14-Inch, Satin  
 15-Inch, Satin  
 16-Inch, Satin  
 17-Inch, Satin  
 18-Inch, Satin



No. 58. Waiter

11-Inch, Satin Shield	\$ 9.00	Chased	\$10.50
17-Inch, Satin Shield	10.00	Chased	11.50
15-Inch, Satin Shield	12.00	Chased	13.50
17-Inch, Satin Shield, with Handles	16.00	Chased	17.50
20-Inch, Satin Shield, with Handles	20.00	Chased	24.00



No. 53. Waiter

22-Inch, Chased	\$34.00	Satin Shield	\$28.00
20-Inch, Chased	25.00	Satin Shield	22.00
18-Inch, Chased	22.00	Satin Shield	18.00
16-Inch, Chased	17.00	Satin Shield	15.00
14-Inch, Chased, no Handles	13.00	Satin Shield	11.00
12-Inch, Chased, no Handles	10.50	Satin Shield	9.00
11-Inch, Chased, no Handles	9.50	Satin Shield	8.00

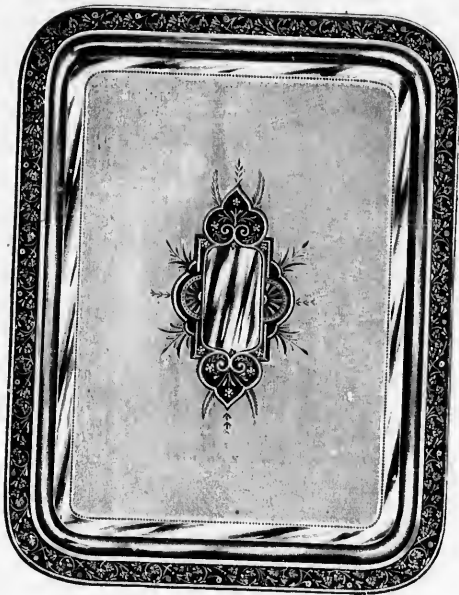
Plate Glass Protectors Furnished at Moderate Cost

\$22.00

20.00



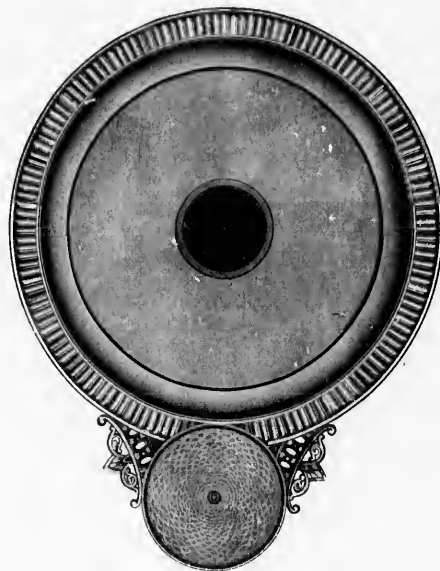
# THE ACME SILVER COMPANY



No. 60. Waiter

11-Inch, Satin, with Shield -	\$6.50
13-Inch, Satin, with Shield -	7.50
15-Inch, Satin, with Shield -	9.50
17-Inch, Satin, with Shield -	12.50
17-Inch, Satin, with Shield, with Handles -	14.00
20-Inch, Satin, with Shield, with Handles -	19.00

Plate Glass Protectors Furnished at Moderate Cost.

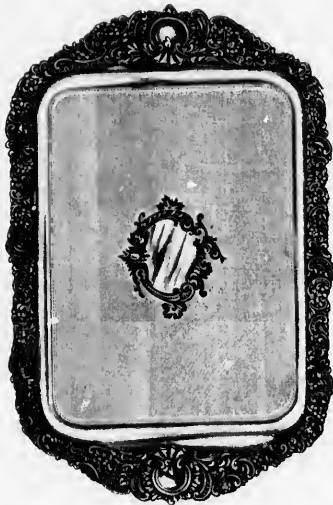


No. 51. Pitcher Plate

11-Inch, Chased -	\$0.25
11-Inch, Satin Shield -	5.00

11-Inch, Chased

THE ACME SILVER COMPANY



No. 64. Waiter

11-Inch, Chased

..... \$9.00



No. 65. Waiter

11-Inch, Chased

..... \$9.00

Plate Glass Protectors Furnished at Moderate Cost

\$0.25  
5.00

THE ACME SILVER COMPANY



No. 55. Waiter

13-Inch, Chased . . . . . \$12.00



No. 54. Waiter

12-Inch, Satin, Chased Border . . . . . \$11.00

Size, 6-Inch,  
Size, 8-Inch,  
Size, 9-Inch,

THE ACME SILVER COMPANY



No. 62. Set of Walters

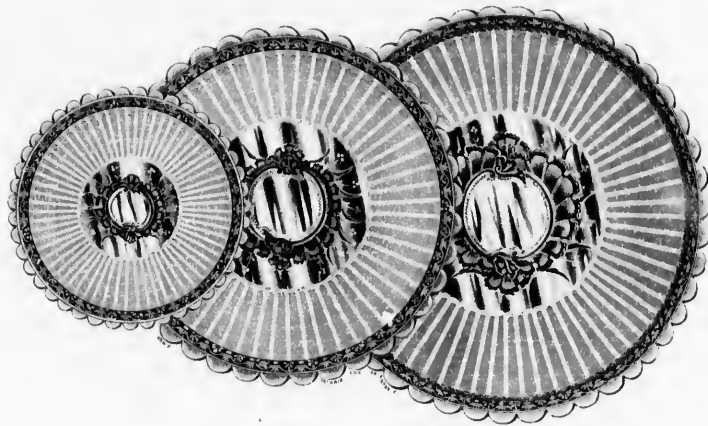
Size, 6-Inch, Chased	- - - - -	\$3.25
Size, 8-Inch, Chased	- - - - -	4.00
Size, 9-Inch, Chased	- - - - -	5.00

Plain, Satin	- - - - -	\$2.75
Plain, Satin	- - - - -	3.25
Plain, Satin	- - - - -	4.00

Plate Glass Protectors Furnished at Moderate Cost

\$11.00

## THE ACME SILVER COMPANY



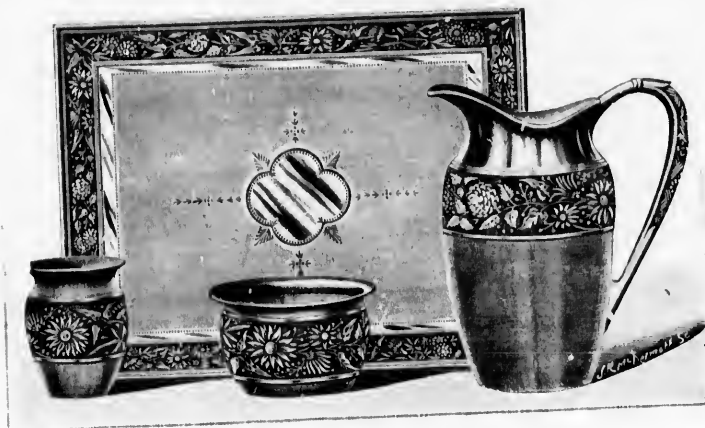
No. 59. Set of Waiters

Size, 6-Inch, Louis XIV., Chasing	\$4.00	Size, 9-Inch, Louis XIV., Chasing	\$6.00
Size, 11-Inch, Louis XIV., Chasing	\$7.50		

Plate Glass Protectors Furnished at Moderate Cost

Pitcher, Silver  
Goblet, Gold

WATER SETS



No. 1115. Water Set

Pitcher, Silver	\$10.00	Slop, Gold Lined	\$4.50
Goblet, Gold Lined	3.50	12-Inch Waiter	9.00

Plate Glass Protectors Furnished for Waiter at Moderate Cost

## THE ACME SILVER COMPANY



No. 1118. Water Set. Satin Bright Cut

Pitcher	\$11.00
Goblet, Gold Lined	3.50

Slop, Gold Lined	\$ 1.50
12-Inch Waiter	11.50

Plate Glass Protector Furnished for Waiter at Moderate Cost

Pitcher, Chas  
Goblet, Gold

# THE ACME SILVER COMPANY



No. III. Water Set

Pitcher, Chased Silver . . . . . \$12.00  
 Goblet, Gold Lined . . . . . 1.50

Stop, Gold Lined . . . . . \$6.00  
 12-Inch Waiter . . . . . 9.00

Plate Glass Protector Furnished for Waiter at Moderate Cost



THE ACME SILVER COMPANY



No. 1112. Water Set

Ice Pitcher Set, Plain or Satin	-----	\$32.00	No. 1101, Pitcher	-----	\$11.00
No. 34, Goblet	-----	3.50	No. 1112, Slop	-----	3.50
	14-Inch Waiter	-----			\$11.00

After May 1st, 1893, Pitchers will be Furnished Porcelain Lined at Same Price

Ice Pitcher S  
No. 1101, P

# THE ACME SILVER COMPANY



No. 1112. Water Set

<p>Ice Pitcher Set, Chased, Gold Lined . . . . . \$40.00</p> <p>No. 1101, Pitcher . . . . . 12.50</p> <p>14-Inch Waiter . . . . . \$15.00</p>	<p>No. 34, Goblet . . . . . \$3.75</p> <p>No. 1112, Slop . . . . . 5.50</p>	
---	---	--

## TILTING SETS



No. 1118. Tilting Set, Complete

Chased, Gold Lined  
Plain Satin, Gold Lined

\$40.00  
35.00



No. 1117. Tilting Set, Complete

Chased, Gold Lined  
Plain Satin, Gold Lined

\$32.00  
28.00

Chased, Gold



No. 1104. Tilting Set, Complete

Chased, Gold Lined

\$26.00



No. 1103. Tilting Set, Complete

Chased, Gold Lined

\$30.00

\$32.00  
28.00



No. 1116. Tilting Set Complete

Chased, Goblets and Slop Bowl, Gold Lined	\$60.00
Chased, Goblets and Slop Bowl, Silver	55.00



No. 1105. Tilting Set Complete

Filter, 23 inches high.	
Plain or Satin, Cup and Drainer, Silver	\$31
Chased, or Chased Satin, Cup and Drainer, Gilt	33

Chased  
Satin Shield  
Satin

ICE PITCHERS



No. 1119. Ice Pitcher

Chased	-----	\$12.00
Satin Shield	-----	11.00
Satin	-----	10.50



No. 1106. Ice Pitcher

Chased	-----	\$15.00
Plain Burnished	-----	13.00



No. 1114. Ice Pitcher

Chased	-----	\$13.00
Satin	-----	11.00

Complete  
 gh.  
 er  
 in ver. Gilt

THE ACME SILVER COMPANY



No. 1101. Ice Pitcher

Height, 13 inches.

Plain or Satin . . . . . \$11.00



No. 1100. Ice Pitcher

Satin Bright Cut . . . . . \$10.00  
 Satin Shield . . . . . 9.50



No. 1101. Ice Pitcher

Height, 13 inches.

Chased or Satin Chased . . . . . \$12.50

Porcelain Lined at Same Price after 1st May, 1893.

No. . . . .  
 Embossed Silver  
 Fancy Gilt

N . . . . .  
 Satin Bright  
 Plain, Satin

# WATER PITCHERS



No. 1120. Water Pitcher

Embossed Silver - - - - - \$ 8.50  
 Fancy Gilt - - - - - 11.00



No. 1115. Water Pitcher

Silver - - - - - \$10.00



No. 1100. Ice Pitcher

Satin, Chased - - - - - \$10.00



No. 1111. Water Pitcher

Chased - - - - - \$12.00  
 Plain, Satin - - - - - 10.00



No. 1118. Water Pitcher

Satin Bright Cut - - - - - \$11.00  
 Plain, Satin - - - - - 9.00

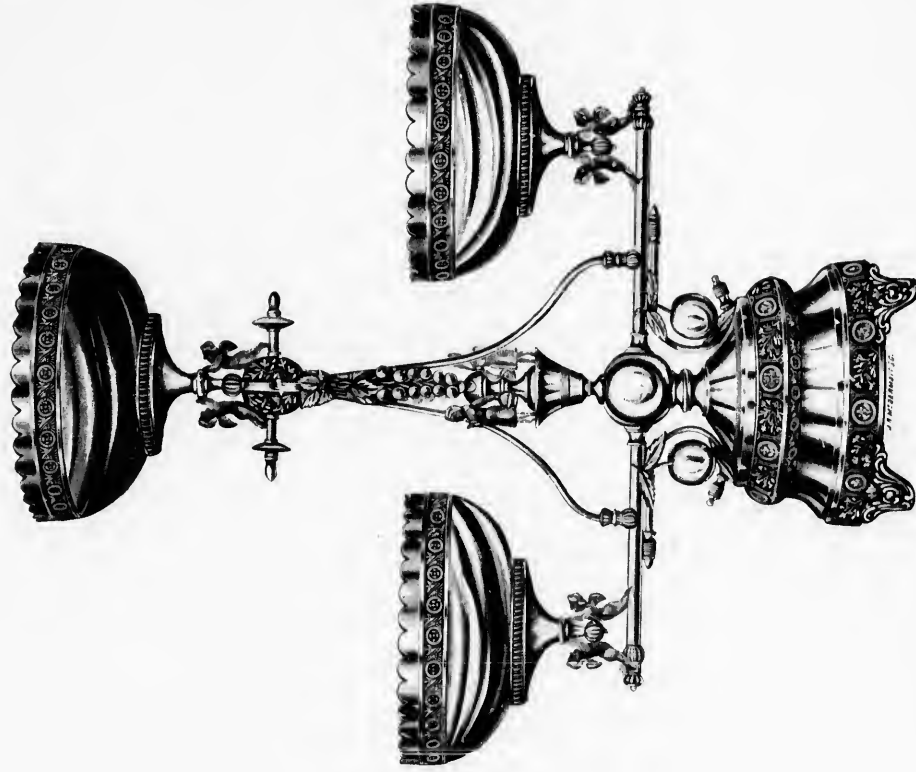


cher  
 es.  
 \$12.5



THE ACME SILVER COMPANY

EPERGNES



No. 2500. Epergne

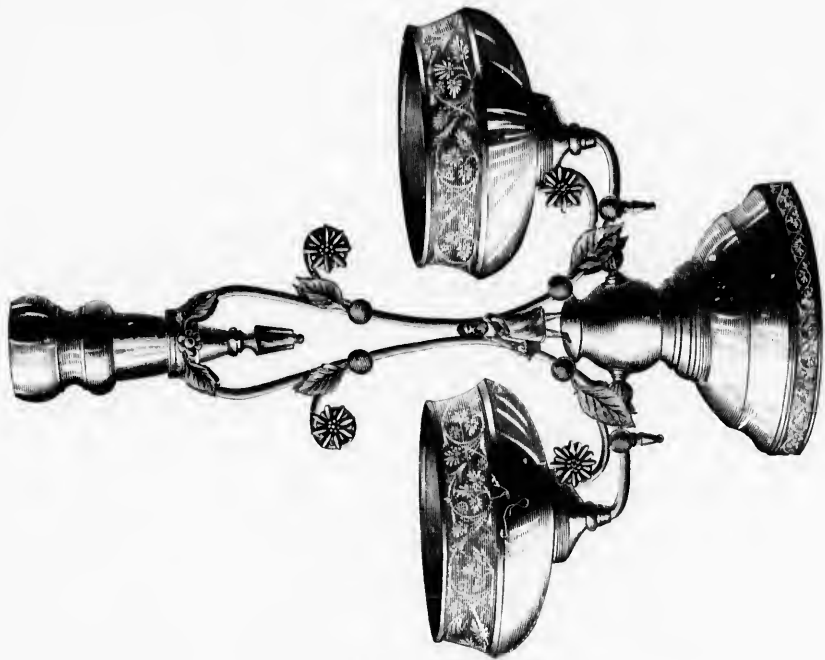
Bowl's Gold Lined . . . \$50.00

Gold Inlaid . . .

\$60.00

THE ACME SILVER COMPANY

Bowls Gold Lined . . . \$30.00  
Gold Inlaid . . . \$60.00



No. 250. Epergne  
Height, 21 Inches  
Bowls Gold Lined . . . \$30.00  
Bowls Gold Lined, Fancy Gilt . . . \$40.00

THE ACME SILVER COMPANY



Bowls Gold Lined

\$28.50

No. 2503. Epergne

In Decorated Bohemian

\$20.50

Bohemian D

THE ACME SILVER COMPANY



No. 2504. Epergne

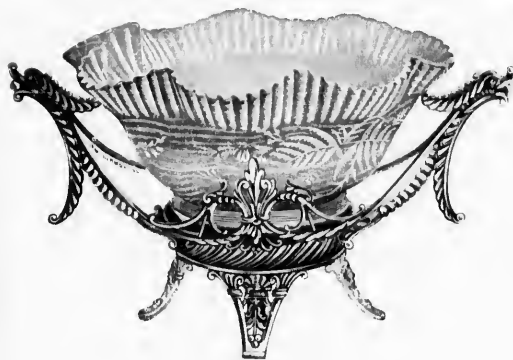
Bohemian Decorated Bowls

\$18.00

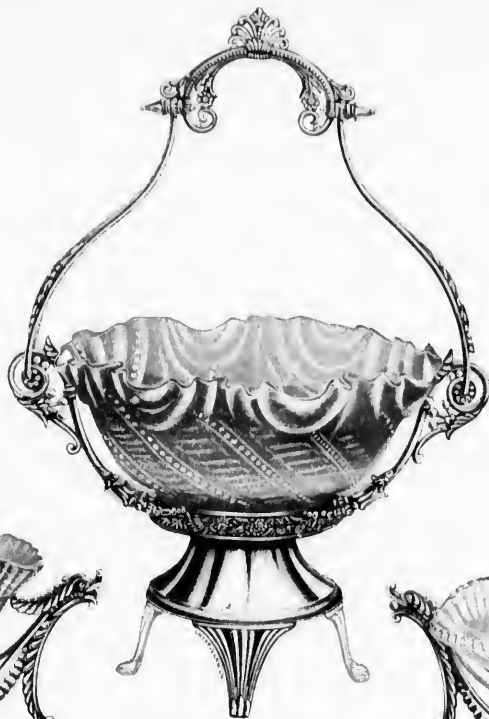
Metal Bowls, Gold Lined

\$20.00

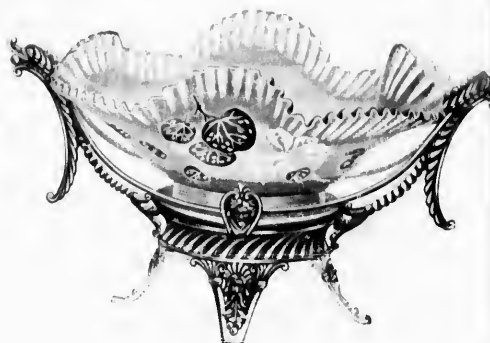
\$20.00



No. 453. Berry Dish  
 Rose Dresden Decorated - - - - - \$12.00



No. 455. Fruit Dish  
 Decorated Burmese - - - - - \$14.00



No. 454. Berry Dish  
 Decorated Dresden - - - - - \$12.00

New Designs of Linings may be Substituted



Amberina

THE ACME SILVER COMPANY



No. 452. Fruit Dish

Amberina

\$10.00



No. 450. Orange Bowl

Crystal

\$12.00



No. 426. Berry Dish

Ruby

\$8.00

Linings Subject to Change for Newer Designs

\$12.00

THE ACME SILVER COMPANY



No. 432. Fruit Dish

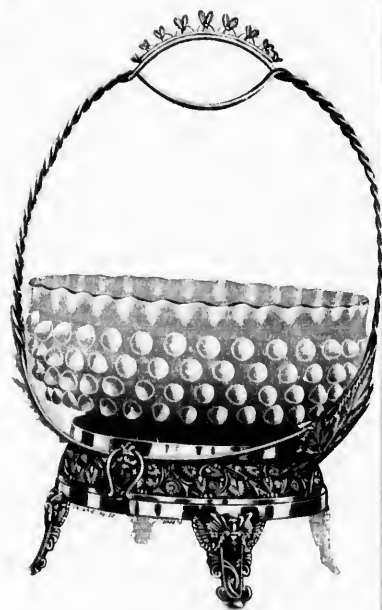
Crystal

\$10.50



No. 446. Berry Dish

Decorated Bohemian



No. 437. Berry Dish

Ruby Optic

\$8.00

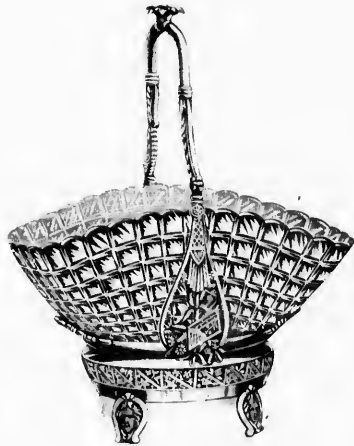


Amberina



No. 434. Berry Dish

Amberna . . . . . \$8.00



No. 433. Berry Dish

Crystal . . . . .

\$5.50



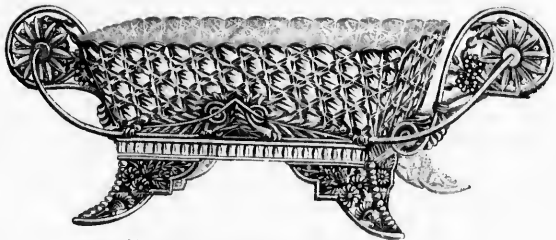
No. 456. Berry Dish

Crystal . . . . .

\$6.50



THE ACME SILVER COMPANY



No. 449. Preserve or Berry Dish

Cut Crystal . . . . . \$7.50



No. 458. Combination Berry Dish

Crystal . . . . . \$11.00



No. 448 Jelly Dish

Cut Crystal . . . . . \$0.50



Crystal . . . . .

THE ACME SILVER COMPANY



No. 457 Berry Dish

Crystal - - - - - \$8.00



No. 444 Fruit Dish.

Decorated Dresden - - - - - \$10.00



No. 443 Fruit Dish.  
Height, 16-Inches

Decorated Dresden - - - - - \$17.00

\$0.50

THE ACME SILVER COMPANY



No. 436 Berry Dish.

Amber, Blue or Crystal . . . . . \$3.00



No. 451 Berry Dish.

In Crystal only . . . . . \$5.50



No. 459 Berry Dish

Decorated Bohemian . . . . . \$7.50



Decorated Dresden

THE ACME SILVER COMPANY



No. 460. Berry Dish

Decorated Dresden . . . . . \$12.00



No. 447. Fruit Dish

Dresden Decorated . . . . . \$12.00



No. 445. Berry Dish

Rose Decorated . . . . . \$12.00

\$7.50

## SALAD BOWLS AND SERVERS



A

Elite Salad Bowl

Worcester Decoration, with Servers . . . . . \$20.00



B

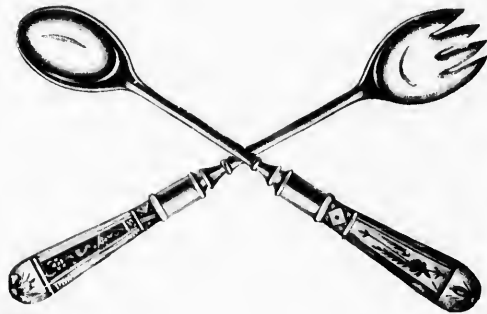
Elite Salad Bowl

Worcester Decoration . . . . . \$20.00



Crown Derby Salad Bowl and Servers

In Crown Derby . . . . . \$11.50  
 In Richly Cut Glass . . . . . 12.50



With Crown Derby Handle . . . . . \$7.00  
 Richly Cut Glass Handle . . . . . 7.50

Chased  
 Satin

# CAKE BASKETS



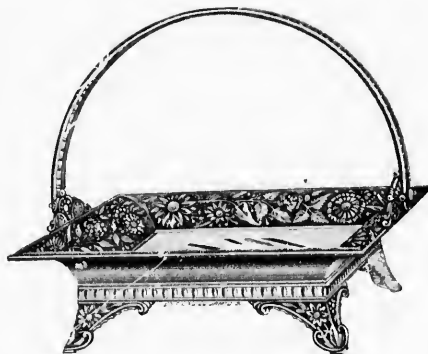
No. 111. Cake Basket

Chased	-----	\$12.00
Gold Lined	-----	14.00



No. 102. Cake Basket

-----	\$7.00	Chased	-----	\$10.00
-----	7.50	Satin	-----	0.00



No. 119. Cake Basket

Embossed Centre	-----	\$10.00
-----------------	-------	---------

THE ACME SILVER COMPANY



No. 116. Cake Basket

Silver	- - - - -	\$ 7 00
Gold Lined	- - - - -	9 00
Fancy Gilt and Ox	- - - - -	11 00



No. 121. Cake Basket

Silver	- - - - -	\$10.00
Gold Lined	- - - - -	12.00
Fancy Gilt	- - - - -	14.00



No. 117. Cake Basket

Silver	- - - - -	\$0.50
Gold Lined	- - - - -	8 50
Fancy Gilt and Ox	- - - - -	10.50



No. 100

Clased	- - - - -	
Gold Lined	- - - - -	

# THE ACME SILVER COMPANY



No. 100. Cake Basket

Chased	- - - - -	\$5.00
Gold Lined	- - - - -	7.00



No. 113. Cake Basket

Silver, Chased	- - - - -	\$5.50
Gold Lined	- - - - -	7.50



No. 103. Cake Basket

Chased, Silver	- - - - -	\$4.00
Gold Lined	- - - - -	5.50

\$0.50  
8.50  
10.50



THE ACME SILVER COMPANY



No. 104. Cake Basket

Chased, Silver	- - - - -	\$10.50
Plain	- - - - -	6.00
Gold Lined, extra	- - - - -	2.00



No. 112. Cake Basket

Silver	- - - - -	\$12.00
Gold Lined	- - - - -	14.00



No. 106. Cake Basket

Chased, Silver	- - - - -	\$7.50
Plain, Silver	- - - - -	6.50
Gold Lined, extra	- - - - -	2.00



No.

Semi Bright Cut  
Chased  
Plain  
Gold Lined, extra

# THE ACME SILVER COMPANY



No. 101. Cake Basket

Satin Bright Cut	\$9.50
Chased	6.00
Plain	5.50
Gold Lined, extra	1.50



No. 115. Cake Basket

Silver	\$ 8.50
Gold Lined	10.00
Fancy Gilt	13.00



No. 122. Cake Basket

Satin Bright Cut	\$7.50
Plain Satin	6.50
Gold Lined, extra	2.00

\$7.50  
6.50  
2.00

THE ACME SILVER COMPANY

**BAKING DISHES**



No. 1200. Baking Dish

Porcelain Lining . . . . . \$14.00



No. 1201. Baking Dish

Porcelain Lining . . . . . \$15.00



No. 1202. Baking Dish

Satin or Bright, Porcelain Lining . . . . . \$12.00



No. 1203. Hot Water

Beetsteak Dish . . . . . \$13.00



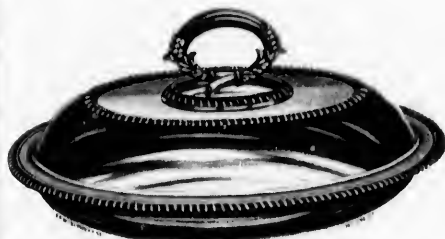
No. 1204. Baking Dish

Lock Handle, Reversible

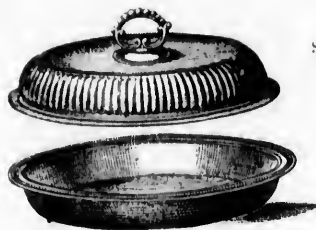


With Earthenware

# THE ACME SILVER COMPANY



No. 1204. Entree Dish, White Metal  
Lock Handle, Reversible Cover . . . . . \$20.00



No. 1213. Entree Dish  
Lock Handle, Nickel Silver . . . . . \$22.00  
Lock Handle, Porcelain Lining . . . . . 24.00



No. 1206. Baking Dish  
Satin Bright Cut . . . . . \$10.00



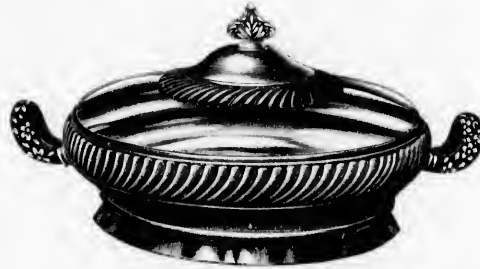
No. 1208. Baking Dish  
With Earthenware Lining, Chased . . . . . \$7.00



No. 1207. Baking Dish  
With Porcelain Lining . . . . . \$12.00

THE ACME SILVER COMPANY

BAKING DISH AND TUREENS



No. 1209 Baking Dish

Porcelain Lining

\$12.00



No. 1210 Tureen

Three Half-Pints

Satin or Burnished - - - - - \$6.50  
 Plate, extra - - - - - 2.00

Plate Commonly Soldered on



No. 1212 Vegetable Dish, Round

Lock Handle, Nickel Silver - - - \$18.00  
 Lock Handle, with Compartments - - - 12.00



No. 1211 Tureen

Satin Bright Cut, Six Pints - - - \$16.00  
 Plain, Satin, Six Pints - - - - - 14.00  
 Satin Bright Cut, Four Pints - - - 14.00  
 Plain, Satin, Four Pints - - - - - 12.50

BUTTE



No. 227

Chased - - - - -  
 Satin - - - - -

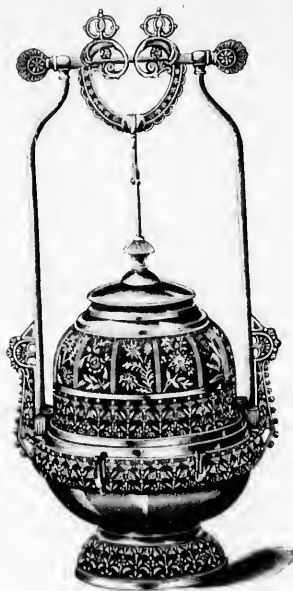
# BUTTER DISHES



No. 227. Butter Dish

Chased	- - - - -	\$10.50
Satin	- - - - -	10.00

\$10.00  
- 14.00  
- 14.00  
- 12.50



No. 216. Butter Dish

With Glass Drainer - - - - - \$11.00



No. 226. Butter Dish

Chased	- - - - -	\$10.50
Satin	- - - - -	10.00



No. 243. Butter Dish

List - - - - - \$5.50

THE ACME SILVER COMPANY



No. 247. Butter Dish

Chased - - - - - \$4.00  
Satin - - - - - 3.50



No. 244. Butter Dish

Chased - - - - - \$3.75



No. 248. Butter Dish

Chased - - - - - \$4.50  
Satin - - - - - 4.00



No. 250. Butter Dish

Chased - - - - - \$4.25



No. 246. Butter Dish

Chased - - - - - \$6.00  
Satin - - - - - 5.50



No. 231. Butter Dish

Chased - - - - - \$4.00



No. 233

Embossed - - - - -



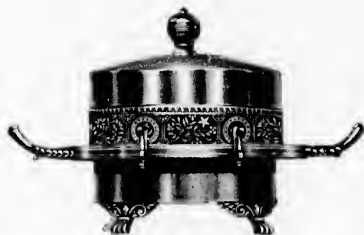
No. 208

Chased - - - - -  
Satin - - - - -



No. 237. Butter Dish

Embossed - - - - - \$4.00



No. 201. Butter Dish

Satin, Bright Cut - - - - - \$5.00  
Satin - - - - - 4.50



No. 2003. Butter Dish

Height, 7 inches.  
Chased - - - - - \$9.00  
Plain - - - - - 8.00



No. 209. Butter Dish

Chise l - - - - - \$9.00  
Satin - - - - - 8.50



No. 245. Butter Dish

Chased, Gold Lined - - - - - \$6.00  
Glass Drainer.



No. 236. Butter Dish

Embossed - - - - - \$4.50



THE ACME SILVER COMPANY



No. 251. Butter Dish  
Satin Bright Cut - - - - - \$3.50



No. 203. Butter Dish  
Height, 5 inches.  
Chased - - - - - \$2.00



No. 232. Butter Dish  
Chased - - - - - \$2.50



No. 242. Butter Dish  
Without Bale - - - - - \$2.00  
Handles, per doz. - - - - - 6.00



No. 230. Butter Dish  
Chased - - - - - \$3.00



No. 249. Butter Dish  
Satin Bright Cut - - - - - \$4.50  
Plain, Satin - - - - - 4.00



No. 1014.  
Satin Chased, Silver  
Satin Chased, Gold  
Satin Chased, Fancy



No. 1015.  
Chased - - - - -  
Chased, Gold Lin - - - - -  
Chased, Fancy Cut - - - - -

CARD RECEIVERS



No. 1014. Card Stand

Satin Chased, Silver	- - - - -	\$6.00
Satin Chased, Gold Lined	- - - - -	7.50
Satin Chased, Fancy Gilt	- - - - -	9.00



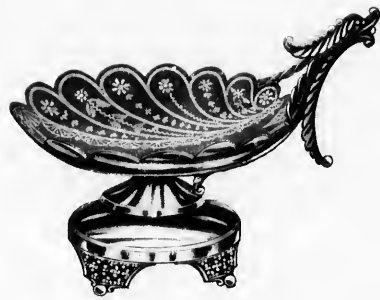
No. 1005 Card Stand.

Chased	- - - - -	\$5.50
Chased, Gold Lined	- - - - -	7.00
Chased, Fancy Gilt	- - - - -	8.50



No. 1013 Card Stand

Satin Chased, Silver	- - - - -	\$7.00
Satin Chased, Gold Lined	- - - - -	8.00
Satin Chased, Fancy Gilt	- - - - -	10.00



No. 1006. Card Stand

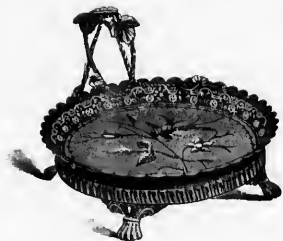
Chased	- - - - -	\$6.00
Chased, Gold Lined	- - - - -	7.00
Chased, Fancy Gilt	- - - - -	8.00



No. 1002. Card Stand

Chased	- - - - -	\$9.50
Chased, Gold Lined	- - - - -	7.50
Chased, Gold Lined, Fancy Gilt	- - - - -	9.00

## THE ACME SILVER COMPANY



**No. 1003. Card Stand**

Chased - - - - -	\$4.50
Chased, Gold Lined - - - - -	5.50
Chased, Fancy Gilt - - - - -	6.50



**No. 1001. Card Stand**

Chased - - - - -	\$4.50
Chased, Gold Lined - - - - -	5.00



**No. 1015. Card Stand**

Satin Chased, Silver - - - - -	\$4.50
Satin Chased, Gold Lined - - - - -	6.00



**No. 1004. Card Stand**

Chased - - - - -	\$5.50
Chased, Gold Lined - - - - -	6.50
Chased, Gold Inlaid - - - - -	7.50



**No. 1000. Card Stand**

Height, 7 inches.

Chased - - - - -	\$3.00
Chased, Gold Lined - - - - -	3.50



**No. 912. S**

H

Cut Crystal -



**No. 9**

Satin Ruby Glass,

# BREAKFAST CASTERS

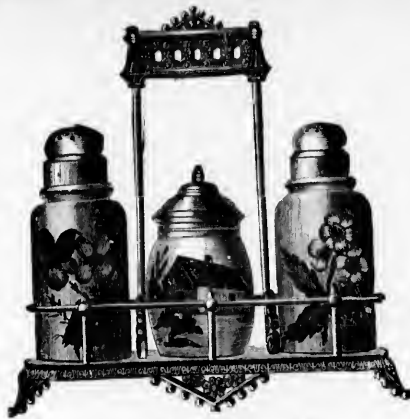


No. 912 Square Breakfast Caster  
Height, 11 Inches.

Cut Crystal - - - - - \$8.00

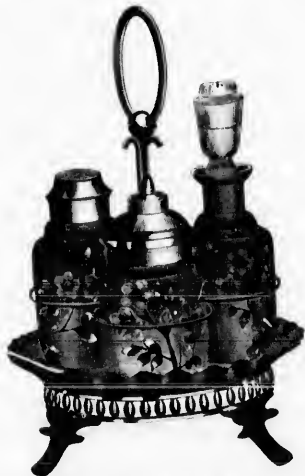


No 948 Breakfast Caster  
Rose DuBarry, Gold Decoration - - - \$6.00



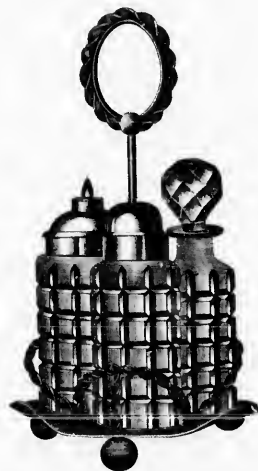
No. 907. Breakfast Caster  
Height, 7 inches.

Assorted Colors and Decorations - - - \$4.75



No. 947. Breakfast Caster

Satin Ruby Glass, Decorated - - - \$5.00



No. 942. Breakfast Caster

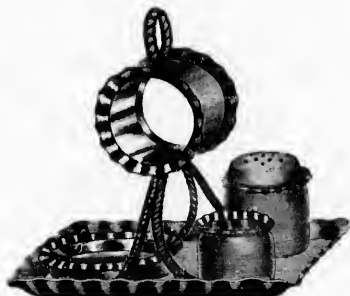
Richly Cut Crystal - - - - - \$5.75

\$5.50  
6.50  
7.50

\$3.00  
3.50



**No. 903. Breakfast Caster**  
 Height, 6 inches  
 Assorted Colors and Decorations . . . . . \$3.00



**No. 946. Lunch Caster**  
 Salt and Plate Gold Lined . . . . . \$5.50



**No. 949. Breakfast Caster**  
 Rose DuBarry, Gold Decoration . . . . . \$4.00



**No. 925. Breakfast Caster**  
 Assorted Colors . . . . . \$2.50



**No. 945. Breakfast Caster**  
 Richly Cut Crystal . . . . . \$6.00  
 Richly Cut Crystal with Spoon Trays on each  
 side, Gold Lined . . . . . \$14.00



**No. 952.**  
 Richly Cut Crystal



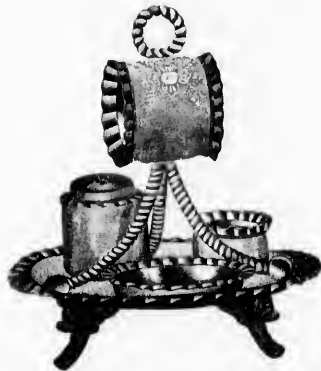
**No. 94**  
 Richly Cut Crystal



No. 952. Breakfast Caster  
Richly Cut Crystal - - - - - \$7.00



No. 913. Breakfast Caster  
Height, 13 Inches - - - - - \$6.50



No. 951. Lunch Caster  
Salt and Plate Gold Lined - - - - - \$5.50



No. 941. Breakfast Caster  
Richly Cut Crystal - - - - - \$5.75



No. 950. Breakfast Caster  
Decorated Burmese - - - - - \$3.50

\$4.00

\$9.00

\$14.00

# DINNER CASTERS



No. 605. Dinner Caster

Six No. 132 Bottles - - - - - \$8.50



No. 600. Dinner Caster

Height, 17 Inches.

Chased - - - - - \$8.60

Plain - - - - - 7.50

Six No. 132 Bottles.



No. 601. Dinner Caster

Height, 17 Inches.

\$8.00

Six No. 132 Bottles.



No. 602. Dinner Caster

Plain, Burnished

\$8.00

THE ACME SILVER COMPANY



No. 609. Dinner Caster

Plam, Burnished

\$10.50

Six No. 132 Bottles



No. 610. Dinner Caster

Plam, Burnished

\$7.00

Six No. 132 Bottles



No. 608. Dinner Caster

Height, 10 Inches

Satin Bright Cut, Six No. 130 Bottles

\$9.00

Satin Bright Cut, Five No. 130 Bottles

\$8.50



THE ACME SILVER COMPANY



No. 603. Dinner Caster

Six No. 130 Bottles - - - - - \$3.50



No. 602. Dinner Caster

Six No. 132 Bottles - - - - - \$10.00



No. 600. Dinner Caster

Height, 17 1/2 Inches  
 With Bell, Chased - \$6.50      Plain \$9.00



No.   
 Cut Glass Bottles



No. 607 Dinner Caster

Cut Glass Bottles

\$15.00



No. 604 Combination Fruit Dish and Caster

Height, 23 Inches

With Fruit Dish Gold Lined \$25.50



No. 606. Dinner Caster

Plain, Burnished, with Six No. 130 Bottles \$6.00

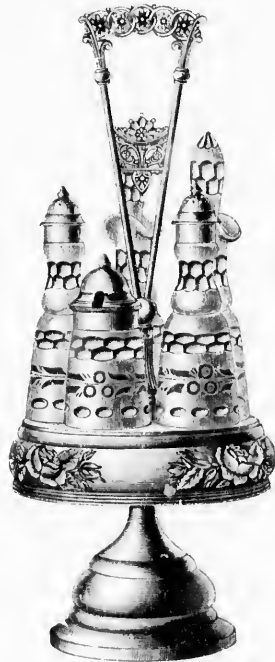
THE ACME SILVER COMPANY



No. 505. Dinner Caster

No. 30, Five Bottles . . . . . \$5.00

Chased  
Plain



No. 500. Dinner Caster

Height, 17 Inches.

\$6.00  
5.50



No. 506. Dinner Caster

Height, 17 Inches . . . . . \$8.00

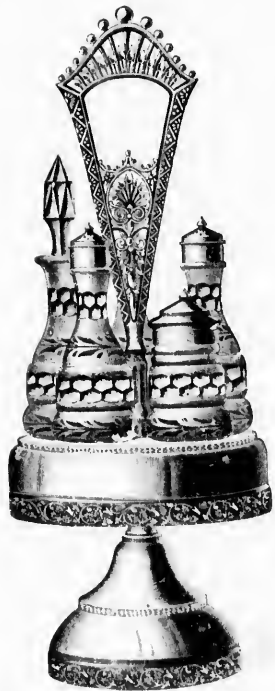


No. 510

Height

Chased  
Plain

THE ACME SILVER COMPANY



No. 510 Dinner Caster

Height, 17 Inches.

Chased . . . . . \$7.50  
 Plain . . . . . 7.00



No. 509. Dinner Caster

Five No. 130 Bottles

\$8.50



No. 512. Dinner Caster

Five No. 130 Bottles

\$6.50

THE ACME SILVER COMPANY



No. 520. Dinner Caster

Five No. 130 Bottles . . . . . \$8.00



No. 518. Dinner Caster

Chased, Burnished . . . . . \$0.50  
Plain . . . . . 0.00



No. 519. Dinner Caster

Chased, Burnished . . . . . \$4.50

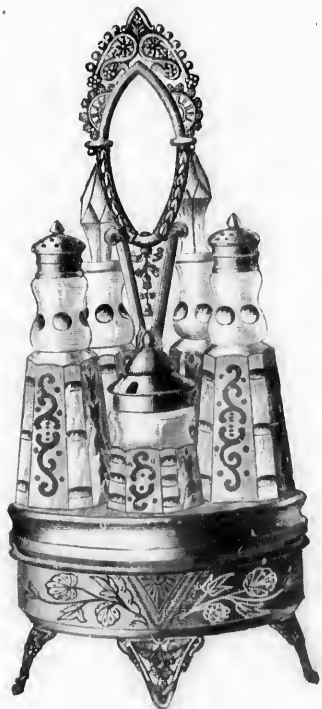


No. 514

Height

Chased, with Five N

Chased, with Five N



No 514. Dinner Caster

Height, 15 Inches

Case'd, with Five No. 130 Bottles \$8.00

Case'd, with Five No. 4005 Bottles 7.50



No 522. Dinner Caster

Satin Bright Cut

\$5.50



No. 521. Dinner Caster

Plain, Burnished

\$4.00

\$4.50

THE ACME SILVER COMPANY

CUPS AND SAUCERS



No. 28. Cup and Saucer  
Satin, Chased, Gold Lined . . . . . \$3.00



No. 29. Cup and Saucer  
Plain, Burnished, Gold Lined . . . . . \$4.50  
Plain, Burnished, Silver . . . . . 4.00



No. 54. Cup and Saucer  
Child's Cup and Saucer, Gold Lined . . . . . \$2.50



No. 64. Cup and Plate  
Gold Lined . . . . . \$5.50



No. 9. Cup and Saucer  
Chased, Gold Lined . . . . . \$6.50  
Chased, Silver . . . . . 6.00



No. 13.  
Coffee Cup, Gold Lined  
Moustache Cup, Gold Lined  
Without



No. 1.  
Gold Lined . . . . . 5.00

CUPS AND SAUCERS AND SHAVING CUPS



No. 13. Cup and Saucer

Coffee Cup, Gold Lined . . . . . \$6.00  
 Moustache Cup, Gold Lined . . . . . 6.50  
 Without Gold Lining, 50c. less.



No. 62 Shaving Cup

Silver . . . . . \$4.50  
 Gold Lined . . . . . 5.50



No. 12. Cup and Saucer

Coffee Cup, Gold Lined . . . . . \$6.50  
 Moustache Cup, Gold Lined . . . . . 7.00  
 Without Gold Lining, 50c. less.



No. 10. Cup and Saucer

Gold Lined . . . . . \$6.00  
 Without Gold Lining, 50c. less.



No. 15. Shaving Cup

Shaving Cup . . . . . \$5.00  
 Shaving Cup, Gold Lined . . . . . 5.50

\$4.50  
 4.00

\$6.50  
 6.00



## CHILDREN'S CUPS



No. 1 Cup  
Satin Bright Cut, Gold Lined \$1.60



No. 2 Cup  
Satin Bright Cut, Gold Lined \$1.25



No. 3 Cup  
Satin Bright Cut, Gold Lined \$1.50



No. 6 Cup  
Chased, Gold Lined \$3.50



No. 5 Cup  
Chased, Gold Lined \$3.50



No. 22 Cup  
Satin Bright Cut, Gold Lined \$2.00



No. 19 Cup  
Etched, Gold Lined \$3.50



No. 16 Cup  
Gold Lined \$3.25 Fancy Gilt \$4.00



No. 49 Cup  
Burnished, Gold Lined



No. 23 Cup  
Chased, Gold Lined

# THE ACME SILVER COMPANY



**No. 49 Cup**  
Burnished, Gold Lined - \$3.00



**No. 51 Cup**  
Chased, Gold Lined - \$2.75



**No. 53 Cup**  
Chased, Gold Lined - \$3.50



**No. 50. Cup**  
Chased, Gold Lined - \$3.50  
Plain - 3.00



**No. 23 Cup**  
Burnished, Gold Lined - \$2.00



**No. 47 Cup**  
Chased, Gold Lined - \$2.75



**No. 52 Cup**  
Burnished, Gold Lined - \$3.00



**No. 48. Cup**  
Satin or Burnished, Gold Lined - \$3.00

\$1.50

\$4.00

THE ACME SILVER COMPANY

**CHILD'S CUPS = CHAMPAGNE CUP = WINE CUP**



**No. 24. Cup**  
Plain, Satin or Burnished, Gold Lined - \$3.00



**No. 25. Cup**  
Satin Bright Cut, Gold Lined - \$1.75



**No. 26. Cup**  
Satin Bright Cut, Gold Lined - \$1.75



**No. 46. Cup**  
Etched, Gold Lined - \$2.25



**No. 56. Champagne Cup**  
Gold Lined - \$4.00  
Silver - 3.50



**No. 57. Wine Cup**  
Gold Lined - \$3.00  
Silver - 2.50



**No. 33.**  
Gold Lined -  
Silver -



**No. 34.**  
Chased, Gold Lined -  
Chased, Silver -

GOBLETS



No. 33. Goblet

Gold Lined	- - - -	\$4.00
Silver	- - - -	3.50



No. 34. Goblet

Chased, Gold Lined	- - - -	\$3.00
Chased, Silver	- - - -	2.50



No. 30 Goblet

Satin Chased, Gold Lined - - - \$4.50



No. 31. Goblet

Gold Lined	- - - -	\$4.00
Silver	- - - -	3.50



No. 35. Goblet

Chased, Gold Lined	- - - -	\$4.50
Chased, Silver	- - - -	4.00

THE ACME SILVER COMPANY



No. 59. Goblet

Gold Lined	- - - -	\$3.75
Silver	- - - -	3.25



No. 60. Goblet

Chased, Gold Lined	- - - -	\$3.75
Chased, Silver	- - - -	3.25



No. 58. Goblet

Chased, Gold Lined	- - - -	\$4.00
Chased, Silver	- - - -	3.50



No. 55. Goblet

Chased, Gold Lined	- - - -	\$3.50
Chased, Silver	- - - -	3.00



No. 63. Goblet

Gold Lined	- - - -	\$4.50
Silver	- - - -	4.00



No. 61. Goblet

Gold Lined	- - - -	\$3.50
Silver	- - - -	3.00

# FIREMAN'S TRUMPET



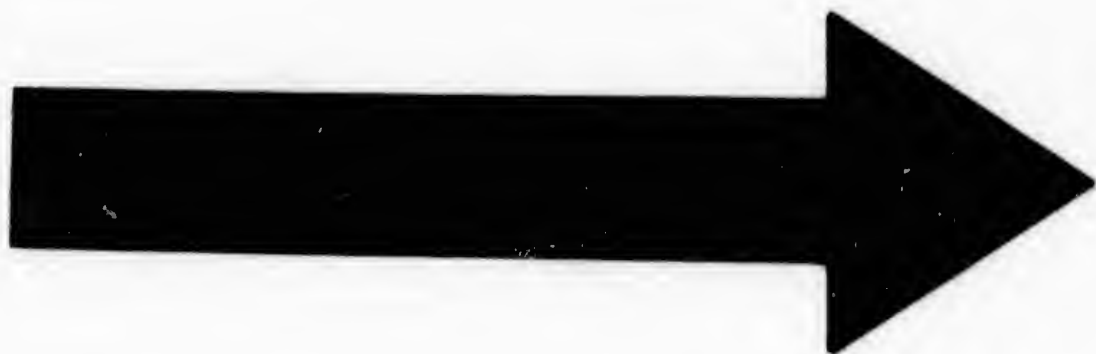
No. 1700. Fireman's Trumpet

Silver . . . . . \$27.00  
Gold Lined and Fancy Gilt . . . . . \$40.00  
Silk Cord and Tassel, Extra \$3.50 to \$4.50 net.

THE ACME SILVER COMPANY

\$4.00  
1.50

\$3.50  
3.00









# THE ACME SILVER COMPANY

## PRIZE CUPS

Mounted with Emblem to Suit any Sport



Gold Lined and Engraved	· · · · ·	\$60.00	No. 66. Prize Cup	Gold Lined Engraved and Oxidized	\$70.00
				Special Designs to Order	

Silver  
Gold Lined  
Oxidized and



THE ACME SILVER COMPANY



<b>No. 42. Prize Cup</b>	
Silver - - - - -	\$23.00
Gold Lined - - - - -	25.00
Gold Lined, Oxidized and Fancy Gilt	28.00



<b>No. 40. Prize Cup</b>	
Height, 12 1/2 Inches	
Chased - - - - -	\$15.00
Chased, Fancy Gilt - - - - -	18.00

Mounted with Emblems to Suit Any Sports



<b>No. 64. Prize Cup</b>	
Chased, Silver - - - - -	\$15.00
Chased, Gold Lined - - - - -	18.00
Chased, Gold Lined, Fancy Gilt - - - - -	21.00

Chased -  
Chased, Fan

# THE ACME SILVER COMPANY



**No. 39. Prize Cup**

Height, 6 Inches

Chased - - - - - \$10.50  
 Chased, Fancy Gilt - - - - 12.00



**No. 38. Prize Cup**

Height, 6½ Inches

Chased - - - - - \$12.00  
 Chased, Fancy Gilt - - - - 13.50



**No. 37. Prize Cup**

Height, 6 Inches

Chased - - - - - \$11.00  
 Chased, Fancy Gilt - - - - 12.50



**No. 36. Prize Cup**

Height, 9 Inches

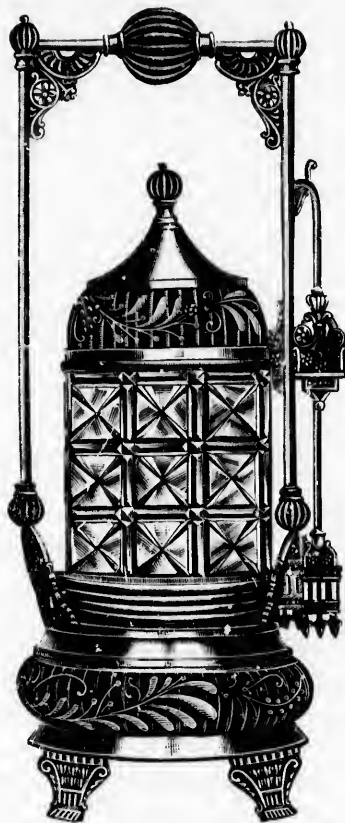
Chased - - - - - \$11.00  
 Chased, Fancy Gilt - - - - 13.50

up  
 - - \$15.00  
 - - 18.00  
 - - 21.00

# PICKLE JARS



No. 305. Pickle Caster  
 Height, 13 Inches  
 Assorted Colors - - - - \$4.00



No. 312. Pickle Caster  
 Height, 13 Inches  
 In Crystal only - - - - \$5.00



No. 311. Pickle Caster  
 Height, 13 Inches  
 Assorted Colors - - - - \$5.00



No. 310. Pickle Caster  
 Rose or Blue

THE ACME SILVER COMPANY



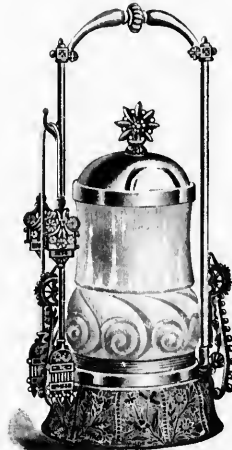
Caster  
Inches  
- - \$5.00



No. 310. Pickle Caster  
Rose or Blue - - \$6.00



No. 304. Pickle Caster  
Height, 12 Inches  
Assorted Colors - - \$3.00



No. 323. Pickle Caster  
Crystal only - - \$3.50



No. 318. Pickle Caster  
Height, 14 Inches  
Satinette, in Rose, Amber and Blue  
\$6.50



No. 335. Pickle Caster  
Rose Decorated - - \$6.50

THE ACME SILVER COMPANY



No. 338. Pickle Caster  
Amberina Marmor - \$6.50



No. 336. Pickle Caster  
Burmese, Decorated - \$4.50



No. 334. Pickle Caster  
Ruby - - - \$3.00



No. 337. Pickle Caster  
Rose Matt, Decorated \$6.00



No. 321. Pickle Caster  
Crystal only - - \$3.25

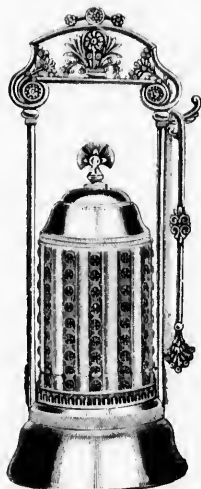


No. 330. Pickle Caster  
Amber, Bl...





Pickle Caster  
\$3.25



No. 333. Pickle Caster  
Amber, Blue and Crystal \$2.00



No. 325. Pickle Caster  
Amber, Blue and Crystal \$2.00



No. 340. Marmalade  
Ruby - - - \$2.50



No. 302. Pickle Caster  
Height, 11 Inches  
Assorted Colors - \$2.00



No. 332. Pickle Dish  
Crystal - - - - - \$3.00



No. 303. Pickle Caster  
Height, 12 Inches  
Assorted Colors - \$2.75

# THE ACME SILVER COMPANY



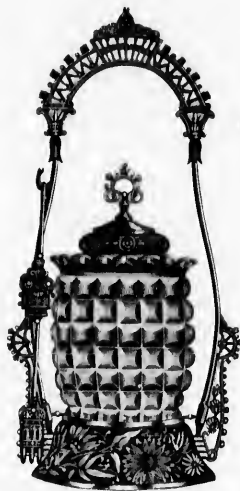
No. 324. Pickle Caster  
Crystal only - - \$3.75



No. 341. Pickle Caster  
Crystal only - - \$2.50



No. 342. Pickle Caster  
Crystal only - - \$5.00



No. 339. Pickle Caster  
Crystal only - - \$3.50



No. 343. Pickle Caster  
Crystal only - - \$5.00

Chased, L.  
Gold Inlaid

N  
Rose or Tu

## DESSERT SETS



No. 1414. Dessert Set Complete

Chased, Louis XIV., Cream Gold Lined - \$14.00  
 Gold Inlaid - - - - - 16.00



No. 1400. Dessert Set Complete

Cut Crystal or Decorated Bohemian - - - \$10.50



No. 1420. Dessert Set Complete

Chased, Gold Lined - - - - - \$7.50



No. 1416. Dessert Set Complete

Rose or Turquoise Decorated - - - - \$10.50



No. 1417. Dessert Set Complete

Crown Derby - - - - - \$13.00



Pickle Caster  
 - \$5.00

# DESSERT SUGARS, CREAMS, SPOON HOLDERS



**No. 90I. Dessert Sugar and Spoon Rack**  
 Ruby, without Spoons - - - - - \$5.00  
 Ruby, with Spoons - - - - - 7.38



**No. 1413. Dessert Sugar**  
 Chased, Louis XIV. - - - - - \$5.00



**No. 90I. Dessert Cream**  
 Ruby - - - - - \$4.00



**No. 900. Sugar Bowl and Spoon Rack**  
 Without Spoons - - - - - \$ 6.50  
 With Spoons, Fancy Pattern - - - - - 11.25



**No. 90I. Dessert Spoon Holder**  
 Ruby - - - - - \$4.50



**No. 1413. Dessert Cream**  
 Chased, Louis XIV., Gold Lined - - - - - \$5.00



**No. 90I. Dessert Cream**  
 Chased, Louis XIV., Silver



**No. 900. Sugar Bowl and Spoon Rack**  
 Gold Lined, Silver

# THE ACME SILVER COMPANY



**No. 2008. Dessert Sugar**  
 Chased - - - \$7.00  
 Plain - - - - 6.00



**No. 2008. Dessert Cream**  
 Chased, Gold Lined - \$7.00  
 Plain - - - - \$6.00



**No. 2005. Dessert Sugar**  
 Chased - - - - \$5.50



**No. 2005. Dessert Cream**  
 Chased, Gold Lined - \$6.00



**No. 905. Dessert Sugar**  
 Patent Sugar - \$8.00



**No. 905. Dessert Spoon Holder**  
 Gold Lined - - - \$7.00  
 Silver - - - - 6.00



**No. 905. Dessert Cream**  
 Gold Lined - - - \$7.00  
 Silver - - - - 6.00

holder  
\$4.50

am  
\$5.00

## THE ACME SILVER COMPANY



No. 2001. Dessert Sugar  
List - - - - \$7.00



No. 2001. Dessert Cream  
Gold Lined - - - \$6.50



No. 2009. Dessert Sugar  
Chased - - - - \$8.00



No. 2009. Dessert Cream  
Chased, Gold Lined - \$7.50



No. 2010. Dessert Sugar  
Chased - - - - \$6.00



No. 2010. Dessert Cream  
Chased, Gold Lined - \$6.00



No. 1424. Dessert Cream  
Decorated Burmese - \$4.25



No. 1424. Dessert Sugar  
Decorated Burmese - \$4.25

No. 1424. Dessert Cream  
Gold Lined  
Silver -

No. 1424. Dessert Sugar  
Chased, Gold Lined  
Chased, Silver -

# THE ACME SILVER COMPANY



No. 2001. Spoon Holder

Gold Lined	-	-	-	\$6.00
Silver	-	-	-	7.00



No. 2000. Spoon Holder

Height, 5 1/2 Inches

Chased, Gold Lined	-	-	\$7.50
Chased, Silver	-	-	6.50



No. 2004. Spoon Holder

Chased, Gold Lined	-	-	\$7.75
Chased, Silver	-	-	6.50



No. 2008. Spoon Holder

Chased, Gold Lined	-	-	\$6.00
Chased, Silver	-	-	5.25



No. 2003. Spoon Holder

Height, 5 1/2 Inches

Chased, Gold Lined	-	-	\$7.50
Chased, Silver	-	-	6.50



No. 2009. Spoon Holder

Chased, Gold Lined	-	-	\$7.50
Chased, Silver	-	-	6.50



... Cream  
- \$7.50



... Sugar  
- \$4.25

THE ACME SILVER COMPANY



No. 652. Spoon Holder

Gold Lined - - - - - \$5.00  
 Silver - - - - - 4.25



No. 653. Spoon Holder

Gold Lined - - - - - \$5.00  
 Silver - - - - - 4.25



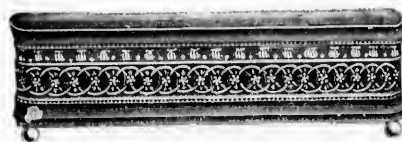
No. 654. Spoon Holder

Chased, Gold Lined - - - - - \$3.50  
 Chased, Silver - - - - - 3.00



No. 656. Spoon Holder

Gold Lined - - - - - \$5.50  
 Silver - - - - - 4.50



No. 657. Spoon Tray

List - - - - - \$5.50



No. 2005. Spoon Holder

Chased, Gold Lined - - - - - \$5.50  
 Chased, Silver - - - - - 4.50

Embossed  
 Embossed

Ruby, Deco



## BISCUIT JARS



No. 086. Biscuit Jar

Embossed Silver - - - - - \$7.00  
 Embossed Old Silver, or Fancy Gilt - - - - - 4.00



No. 072. Biscuit Jar

Silver - - - - - \$6.50



No. 087. Biscuit Jar

Embossed Silver - - - - - \$7.50  
 Embossed Old Silver or Fancy Gilt - - - - - 9.50



No. 083. Biscuit Jar

Ruby, Decorated - - - - - \$5.50



No. 088. Biscuit Jar

Royal Worcester - - - - - \$10.00



No. 080. Biscuit Jar

Royal Worcester - - - - - 0.00

## BISCUIT JAR = PAP BOWL = MARMALADE



No. 767. Biscuit Jar  
 Crown Derby - - - - - \$8.50



No. 050. Pap Bowl and Plate  
 With Bowl Gold Lined - - - - - \$8.00



No. 090. Marmalade  
 Crown Derby - - - - - \$6.00

## CRUMB TRAYS AND BRUSH



No. 1707. Crumb Tray  
 Plain, Satin - - - - - \$5.50  
 Satin Bright Cut - - - - - 6.00



No. 1708. Crumb Brush  
 Satin Bright Cut - - - - - \$5.00



No. 1706. Crumb Tray  
 Satin Bright Cut - - - - - \$5.00

With Cups  
 Cups Gold

**EGG STANDS**



No. 040. Egg Stand, Complete  
Height, 14 Inches.

With Cups and Spoons Gold Lined - - - \$11.50  
Cups Gold Lined, no Spoons - - - - 9.50



No. 042. Egg Stand, Complete  
Height, 4 1/2 Inches

With Cup and Spoon Gold Lined - - - \$5.50



No. 043. Egg Stand, Complete  
Height, 9 Inches

With Cups and Spoons Gold Lined - - - \$9.50



No. 041. Egg Stand, Complete  
Height, 14 Inches

With Cups and Spoons Gold Lined - - - \$15.00  
Cups Gold Lined, no Spoons - - - - 12.00

## SYRUP CUPS



No. 2000. Syrup Cup

Height, 6½ Inches

Chased	- - - - -	\$8.50
Plain	- - - - -	7.50



No. 2001. Patent Syrup Cup

List	- - - - -	\$7.00
------	-----------	--------



No. 2003. Syrup Cup

Height, 6½ Inches

Chased	- - - - -	\$8.50
Plain	- - - - -	7.50



No. 2008. Syrup Cup.

Chased, Satin	- - - - -	\$6.75
Plain, Satin	- - - - -	6.00



No. 2009. Syrup Cup

Chased, Satin	- - - - -	\$8.50
Plain, Satin	- - - - -	7.00



No. 2007. Syrup Cup

Plain	- - - - -	\$4.50
Chased	- - - - -	5.00

Plain  
Chased

No.  
Ruby and B



up Cup

ches

\$8.50

7.50



up Cup

\$4.50

5.00



No. 902. Patent Syrup Cup

Plain	-----	\$4.50
Chased	-----	5.50



No. 908. Patent Syrup Cup

Chased, Satin	-----	\$6.00
Plain, Satin	-----	5.50



No. 2004. Syrup Cup

Chased	-----	\$8.00
Satin or Burnished	-----	7.50

## CHEESE DISHES AND SUGAR SIFTER



No. 047. Cheese Dish and Cover

Ruby and Blue, Decorated	-----	\$8.00
--------------------------	-------	--------



No. 909. Sugar Sifter

Chased, Satin	-----	\$6.00
Plain, Satin	-----	5.50



No. 048. Cheese Dish and Cover

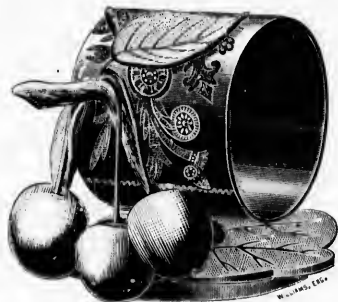
Cut Crystal, Ruby, or Blue, Decorated	-----	\$10.00
---------------------------------------	-------	---------

## NAPKIN RINGS



No. 733. Napkin Ring

Silver	- - - - -	\$18.00
Gold Lined	- - - - -	21.00



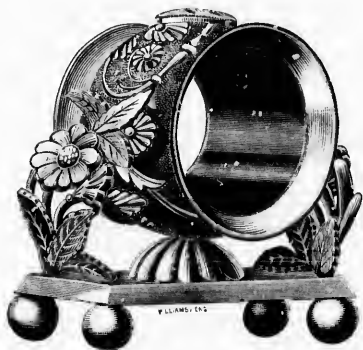
No. 732. Napkin Ring

Silver	- - - - -	\$18.00
Gold Lined	- - - - -	22.00



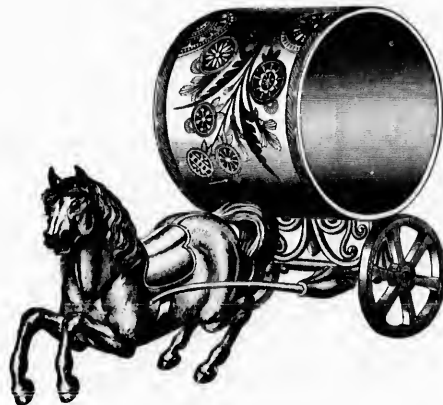
No. 718. Napkin Ring

Silver	- - - - -	\$18.00
Gold Lined	- - - - -	21.00



No. 723. Napkin Ring

Silver	- - - - -	\$21.00
Gold Lined	- - - - -	24.00



No. 727. Napkin Ring

Silver	- - - - -	\$21.00
Gold Lined	- - - - -	23.00

All Napkin Rings Priced Per Dozen.



No. 710. Napkin Ring

Silver	- - - - -	\$12.00
Gold Lined	- - - - -	15.00

Silver  
Gold Lined  
Fancy Gilt

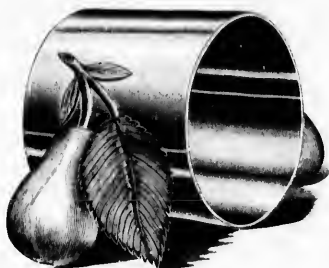
Silver  
Gold Lined

# THE ACME SILVER COMPANY



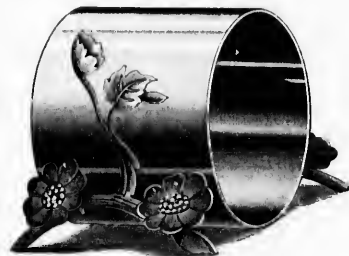
No. 750. Napkin Ring

Silver	\$14.00
Gold Lined	17.00
Fancy Gilt	24.00



No. 751. Napkin Ring

Silver	\$12.00
Gold Lined	15.00
Fancy Gilt	22.00



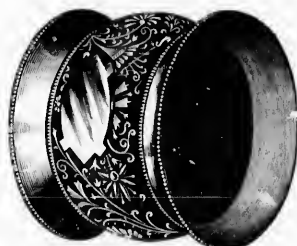
No. 752. Napkin Ring

Silver	\$12.00
Gold Lined	15.00
Fancy Gilt	20.00



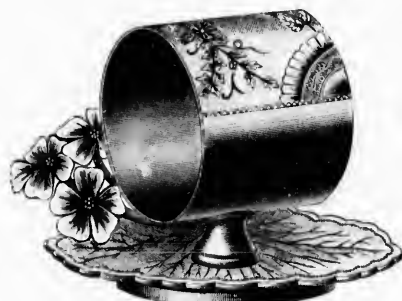
No. 730. Napkin Ring

Silver	\$10.50
Gold Lined	10.50



No. 712. Napkin Ring

Silver	\$ 8.00
Gold Lined	11.00



No. 729. Napkin Ring

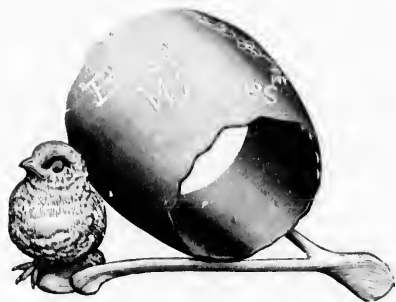
Silver	\$18.00
Gold Lined	21.00



n Ring	\$18.00
- - -	21.00



n Ring	\$12.00
- - -	15.00



**No. 760. Napkin Ring**  
 Silver - - - - - \$18.00  
 Gold Lined - - - - - 21.00



**No. 761. Napkin Ring**  
 Silver - - - - - \$15.00  
 Gold Lined - - - - - 18.00



**No. 762. Napkin Ring**  
 Silver - - - - - \$15.00  
 Gold Lined - - - - - 18.00



**No. 731. Napkin Ring**  
 Silver - - - - - \$16.50  
 Gold Lined - - - - - 19.50



**No. 741. Napkin Ring**  
 Silver - - - - - \$27.00  
 Gold Lined - - - - - 30.00  
 Oxidized and Fancy Gilt - - - 36.00



**No. 747. Napkin Ring**  
 Silver - - - - - \$18.00  
 Gold Lined - - - - - 21.00  
 Oxidized and Fancy Gilt - - - 27.00

Silver -  
 Gold Lined  
 Oxidized a

Silver  
 Gold Lined





ng  
- \$15.00  
- 18.00

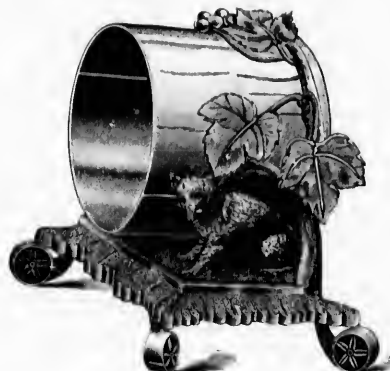


ng  
- \$18.00  
- 21.00  
- 27.00



No. 745. Napkin Ring

Silver - - - - - \$13.00  
Gold Lined - - - - - 16.00  
Oxidized and Fancy Gilt - - - - - 21.00



No. 743. Napkin Ring

Silver - - - - - \$20.00  
Gold Lined - - - - - 23.00  
Fancy Gilt - - - - - 28.00



No. 744. Napkin Ring

Silver - - - - - \$12.00  
Gold Lined - - - - - 15.00  
Fancy Gilt - - - - - 21.00



No. 711. Napkin Ring

Silver - - - - - \$ 6.00  
Gold Lined - - - - - 12.00



No. 716. Napkin Ring

Silver - - - - - \$0.50  
Gold Lined - - - - - 0.50



No. 719. Napkin Ring

Silver - - - - - \$ 8.00  
Gold Lined - - - - - 11.00

## THE ACME SILVER COMPANY



**No. 765. Napkin Ring**

Silver - - - -	\$ 0.70
Gold Lined - - - -	12.50



**No. 722. Napkin Ring**

Silver - - - -	\$6.50
Gold Lined - - - -	9.50



**No. 763. Napkin Ring**

Silver - - - -	\$15.00
Gold Lined - - - -	18.00



**No. 757. Napkin Ring**

Satin, Engraved - - - -	\$5.50
Gold Lined - - - -	8.50



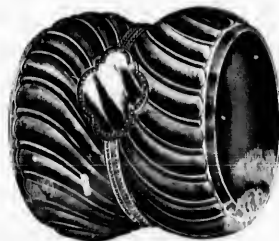
**No. 753. Napkin Ring**

Silver - - - -	\$ 8.00
Gold Lined - - - -	11.00



**No. 754. Napkin Ring**

Silver - - - -	\$ 8.00
Gold Lined - - - -	11.00



**No. 767. Napkin Ring**

Silver - - - -	\$10.00
Gold Lined - - - -	13.00



**No. 766. Napkin Ring**

Silver - - - -	\$12.00
Gold Lined - - - -	15.00

Silver  
Gold Lined

List, per

# THE ACME SILVER COMPANY



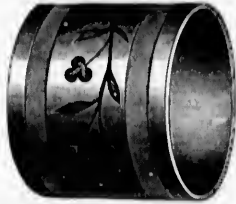
Napkin Ring

- - \$5.50  
- - 8.50



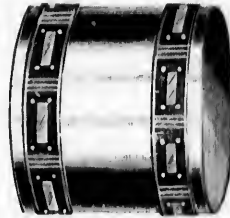
Napkin Ring

- - \$12.00  
- - 15.00



No. 726. Napkin Ring

Silver - - - - - \$5.00  
Gold Lined - - - - - 7.00



No. 715. Napkin Ring

Silver - - - - - \$ 8.50  
Gold Lined - - - - - 11.50



No. 720. Napkin Ring

Silver - - - - - \$4.50  
Gold Lined - - - - - 6.50

## SODA HOLDERS



No. 07. Soda Holder

List, per Doz. - - - - - \$24.00



No. 09. Soda Holder

List, per Doz. - - - - - \$24.00



No. 08. Soda Holder

List, per Doz. - - - - - \$24.00

## CELERIES



No. 98. Celery

Ormutz, Decorated - - - \$7.00



No. 97. Celery

Dresden, Decorated - - - \$8.00



No. 100. Celery

Decorated Burmese - - - \$7.50



No. 93. Celery

\$5.50



No. 99. Celery

Ruby Optic - - - \$3.50

# SALTS



No. 027. Salt  
With Spoon Gold Lined - - - - - \$3.00



No. 025. Salt  
Silver - - - - - \$2.25  
Gold Lined - - - - - 2.75



No. 030. Salt  
Crown Derby - - - - - \$3.50



No. 031. Salt  
Cut Crystal - - - - - \$3.00



No. 010. Salt  
Crystal - - - - - \$2.25  
Blue - - - - - 2.50  
Ruby - - - - - 2.75



No. 029. Salt  
Ruby, Decorated - - - - - \$3.75

\$7.50

\$3.50



No. 012. Salt

Crystal	- - - - -	\$2.50
Blue	- - - - -	2.75
Ruby	- - - - -	3.00



No. 013. Salt

Crystal	- - - - -	\$2.75
Blue	- - - - -	3.00
Ruby	- - - - -	3.25



No. 036. Salts

With Spoon Gold Lined	- - - - -	\$3.00
-----------------------	-----------	--------



No. 043. Hotel Salt

Height, 6 Inches

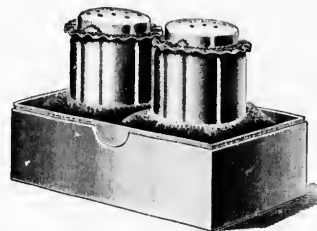
Satin or Burnished, per Doz.	-	\$13.00
------------------------------	---	---------

THE ACME SILVER COMPANY



No. 035. Salts

With Spoon Gold Lined - - - - \$3.00



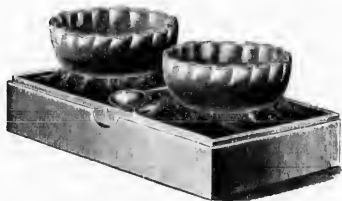
No. 042. Salt and Pepper

List - - - - - \$2.50



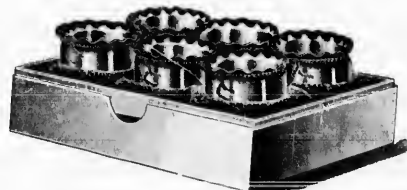
No. 041. Salt and Pepper

With Spoon Gold Lined - - - - \$3.50



No. 033. Salts

With Spoon Gold Lined - - - - \$3.00



No. 040. Individual Salts

Half Doz. in Box - - - - - \$6.00

\$13.00

THE ACME SILVER COMPANY

ICE TUBS AND WINE COOLER



No. 12. Ice Tub

List . . . . . \$7.50



No. 13. Ice Tub

List . . . . . \$0.50



No. 1071. Wine Cooler

Chased	. . . . .	\$15.00
Plain	. . . . .	12.50

Gold Lined  
Silver -

Gold Lined  
Silver -





No. 3001. Bon Bon

Gold Lined - - - - - \$3.50  
 Silver - - - - - 3.00

BON BON DISHES  
 AND TONGS



No. 3003. Bon Bon

Gold Lined - - - - - \$4.50  
 Silver - - - - - 4.00



Bon Bon Tongs

List, per Doz. - - - - - \$15.00



No. 3000. Bon Bon

Gold Lined - - - - - \$5.00  
 Silver - - - - - 4.50



No. 3002. Bon Bon

Gold Lined - - - - - \$5.00  
 Silver - - - - - 4.50

THE ACME SILVER COMPANY

**BLOTTING PADS = PEN WIPER = INK STANDS**



No. 1727. Blotting Pad

List . . . . . \$5.00



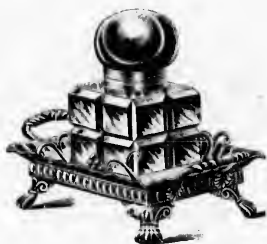
No. 1728. Blotting Pad

List . . . . . \$4.00



No. 1729. Pen Wiper

List . . . . . \$2.75



No. 1726. Ink Stand

Satin . . . . . \$5.50



No. 1725. Ink Stand

Satin, Chased . . . . . \$4.00

Satin, Cha  
Satin, Pla

Satin, Cha  
Satin, Pla

# SARDINE BOXES - KNIFE RESTS



No. 1500. Sardine Box

Satin, Chased - - - - - \$6.00  
 Satin, Plain - - - - - 5.50



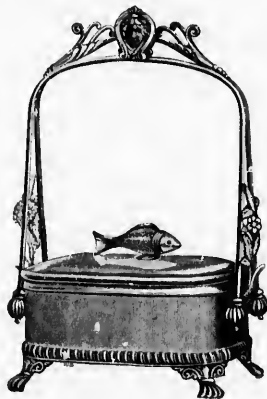
No. 01. Knife Rest

Per Dozen - - - - - \$12.00



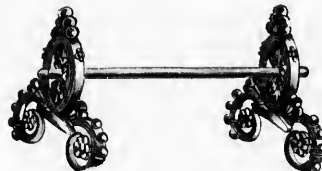
No. 02. Knife Rest

Per Dozen - - - - - \$12.00



No. 1501. Sardine Box

Satin, Chased - - - - - \$8.00  
 Satin, Plain - - - - - 7.50



No. 05. Knife Rest

Per Dozen - - - - - \$12.00



No. 03. Knife Rest

Per Dozen - - - - - \$15.00



No. 04. Knife Rest

Per Dozen - - - - - \$15.00

## GLOVE CASE - HANDKERCHIEF CASE



No. 1650. Glove Case

Gold Lined, with Round Corner	\$12.00
Old Silver or Gold Inlaid	15.00



No. 1675 Handkerchief Case

Gold Lined, with Round Corners	\$12.00
Old Silver or Gold Inlaid	15.00

## CANDLESTICK - CIGAR BOX - ASH RECEIVER



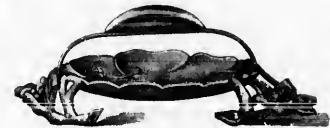
No. 2151. Candlestick

Silver or Ox	\$5.00
--------------	--------



No. 1600 Cigar Box

Silver	\$20.00
Old Silver	22.00



No. 2152. Cigar Rest and Ash Receiver

List, Silver or Ox	\$2.50
--------------------	--------

Plain, Satin  
Satin Bright  
Gold Lined.

TO

No. 1  
List, per Doz

## SOAP BOXES AND FLASK



No. 90. Soap Box

Plain, Satin	- - - -	\$2.00
Satin Bright Cut	- - - -	3.00
Gold Lined, not Burnished, extra	-	1.00



No. 91. Soap Box

Embossed, Silver	- - - -	\$3.00
Oxidized, or Old Silver	- - - -	4.00
Gold Lined, extra	- - - -	1.00



No. 2700. Flask

Satin, Chased	- - - -	\$4.50
Plain	- - - -	3.50

## TOOTH PICK HOLDER - CALENDAR - MATCH HOLDER



No. 1151. Tooth Pick Holder

List, per Doz	- - - -	\$11.00
---------------	---------	---------



No. 54 1/2. Calendar

With Tablets	- - - -	\$5.00
--------------	---------	--------



No. 1150. Match Holder

List, per Doz.	- - - -	\$11.00
----------------	---------	---------

Ash Receiver  
\$2.50

## COMMUNION WARE



No. 050. Communion Set

Flagon	-----	\$11.75	Plates, each	-----	\$4.00
Bowl	-----	7.50	Goblets, each	-----	3.50
Bowl, Gold Lined	-----	9.25	Goblets, each, Gold Lined	-----	4.00
	Patent	-----		-----	\$6.00

No. 1551.

List



No. 53 1/2. Photograph Frame

Cabinet size - - - - - \$4.50  
Card - - - - - 3.50



No. 60 1/2. Photograph Frame

Cabinet size - - - - - \$4.50  
Card - - - - - 3.50

## BUREAU BOXES AND PIN CUSHIONS



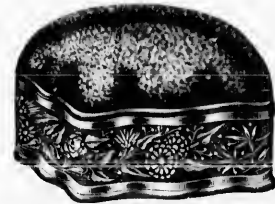
No. 1561. Bureau Box and Pin Cushion

List - - - - - \$5.00



No. 1550. Bureau Box and Pin Cushion

List - - - - - \$5.50



No. 1552. Bureau Box and Pin Cushion

List - - - - - \$5.00

\$4.00  
3.50  
4.00

# PRESENTATION TROWELS

## HARD METAL



**No. 0. Presentation Trowel**

Plain or Embossed Handle, Engraved Blade	\$10.00	Ebony, Celluloid or Rosewood Handle, Engraved Blade	\$11.50
Handle or Blade Gold Plated, extra, \$2.50			



**No. 00. Presentation Trowel**

Plain or Embossed Handle	\$11.00	Ebony, Celluloid or Rosewood Handle	\$12.50
Handle or Blade Gold Plated, extra, \$3.00			



**No. 000. Presentation Trowel**

Plain, Embossed, or Engraved Handle	\$11.00	Ebony, Celluloid or Rosewood Handle	\$12.50
Handle or Blade Gold Plated, extra, \$3.00			

BAR



Plain -  
Partitioned -  
Chased -  
Partitioned



# BAR BOWLS, WINE COOLER



No. 11. Bar Bowl

Plain	- - - - -	\$13.00
Partitioned	- - - - -	14.50
Chased	- - - - -	16.00
Partitioned	- - - - -	17.50



No. 10. Bar Bowl and Spice Dish

Gold Lined - - - - - \$22.50

Can be Supplied Without Spice Dishes or Bouquet Holder.



No. 1012. Wine Cooler

Plain	- - - - -	\$17.00
Chased	- - - - -	20.00

\$11.50

\$12.50

\$12.50



No. 904. Sugar

\$6.00



No. 904. Cream

Covered - - - - - \$6.00

Uncovered - - - - - 5.00



No. 904. Spoon Holder

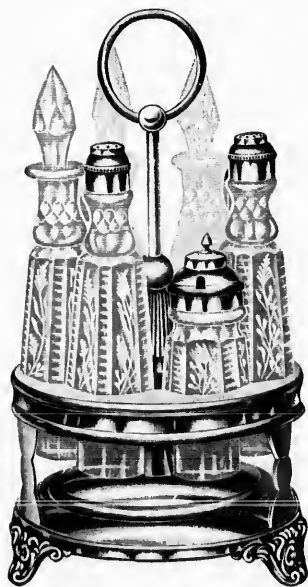
\$4.50

## HOTEL WARE



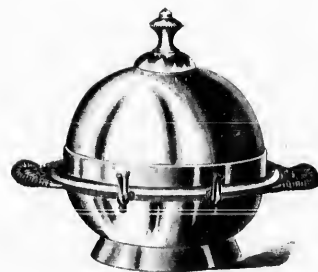
No. 904. Patent Syrup

Plain - - - - - \$5.50



No. 606. Castor

Plain, Burnished - - - - - \$9.00



No. 904. Butter

Plain or Satin - - - - - \$6.00

Metal or Glass Drainer



Plain or Satin



No. 2

Plain or Satin

THE ACME SILVER COMPANY



No. 907. Sugar

Plain or Satin - - - - - \$4.00



No. 907. Cream

Plain or Satin - - - - - \$3.50



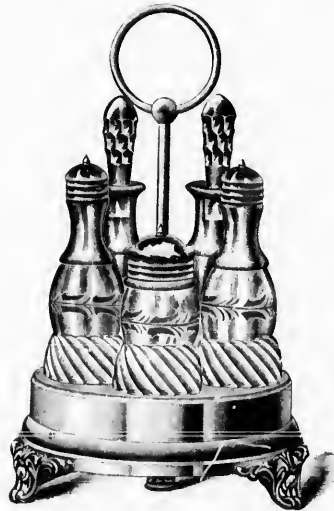
No. 907. Spoon Holder

Plain or Satin - - - - - \$3.50



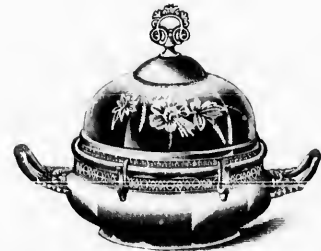
No. 2007. Syrup and Plate

Plain or Satin - - - - - \$4.50



No. 251. Castor

Plain - - - - - \$4.00



No. 251. Butter

Plain only - - - - - \$3.00

\$6.00

THE ACME SILVER COMPANY



**No. 1203. Hot Water or Steak Dish**  
 List - - - - - \$13.50



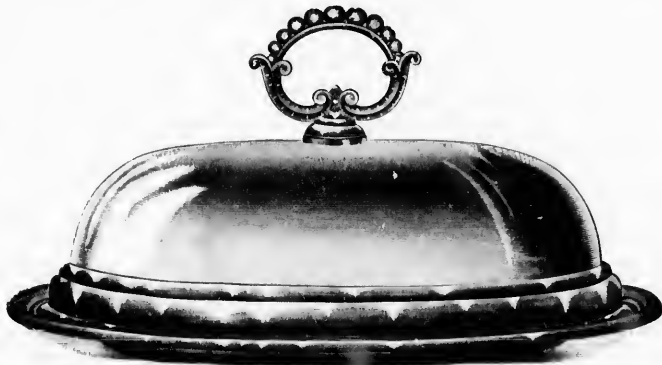
**No. 1212. Vegetable Dish, Round**  
 Lock Handle, Nickel Silver - - \$18.00  
 Lock Handle, with Compartments - 22.00



**No. 1213. Entree Dish**  
 Lock Handle, Nickel Silver - - \$22.00  
 With Porcelain Lining - - - 24.00



**No. 2011. Chocolate Pot**  
 Chased, Bright Cut - \$12.00  
 Plain or Satin - - 9.50



**No. 1211. Cover Dish**  
 11 Inches.  
 Nickel Silver - - - - - \$21.00  
 Either Cover or Plate, extra - - - - - 10.50



**No. 1210. Tureen**  
 Satin or Burnished - - - \$0.50  
 Plate, extra - - - - - 2.00  
 Plate Commonly Soldered on.

List -

No.  
 Chased -  
 Plain -

# THE ACME SILVER COMPANY



Dish  
- - \$22.00  
- - 24.00



**No. 902. Sugar**

List - - - - - \$6.25



**No. 902. Cream**

List - - - - - \$5.00  
With Cover - - - - - 6.00



**No. 902. Spoon Holder**

List - - - - - \$4.50



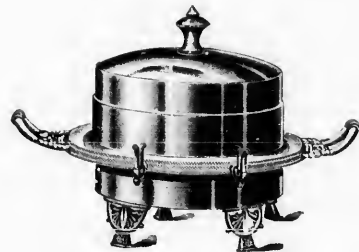
**No. 902. Patent Syrup**

Chased - - - - - \$5.50  
Plain - - - - - 4.50



**No. 607. Castor**

List - - - - - \$15.00



**No. 902. Butter**

List - - - - - \$4.50



**No. 904. Bar Pitcher**  
 3 Half Pints, Covered - - \$6.00  
 3 Half Pints, Uncovered - - 5.00



**No. 9100. Hotel Gong**  
 List, per Doz. - - - - - \$108.00



**No. 902. Bar Pitcher**  
 3 Half Pints, no Cover - - \$5.00  
 3 Half Pints, with Universal Cover 6.00



**No. 906. Bar Pitcher**  
 Half Pint - - - - - \$3.50



**No. 1113. Bar Pitcher**  
 5 Quarts, Satin or Burnished - - - - \$15.00  
 3 Quarts, Satin or Burnished - - - - 9.50  
 2 Quarts, Satin or Burnished - - - - 6.75  
 1 Quart, Satin or Burnished - - - - 5.75



**No. 043. Hotel Salt**  
 Satin or Bright, per Doz. - - \$18.00



**Ginger Ale Holder**  
 Nickel Silver  
 Per Dozen - - -



**Spun Shaft**  
 Medium - - -  
 Large - - -

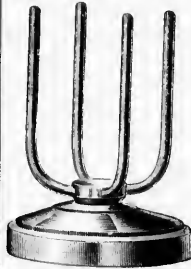


**Heavy Nickel**  
 Per Dozen - - -



Pitcher  
- - \$5.00  
Sisal Cover 6.00

**BAR GOODS**



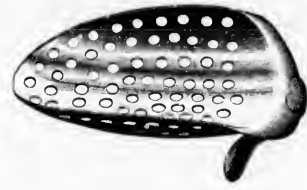
**Ginger Ale Bottle Holder**  
Nickel Silver  
Per Dozen - \$24.00



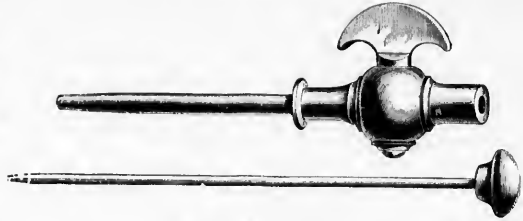
**Ribbed Towel Holder and Key Ring**  
Per Dozen \$3.00



**Excelsior Cork Holder and Detachable**  
Per Dozen - \$4.00



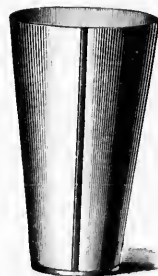
**Climax Strainer, Silver Plated**  
Pat. Jan. 14, '90.  
Per Dozen - - - - - \$18.00



**Needle Champagne Tap**  
Per Dozen - - - - - 18.00



**Spun Shaker**  
Medium - \$21.00  
Large - - - 27.50



**Flexible Shaker**  
Medium, per Doz. \$15.00  
Large - - - 18.00



**Climax Strainer in Position for Use**  
Pat. Jan. 14, '90.  
Per Dozen - - - - - \$18.00  
Tumblers Not Included.



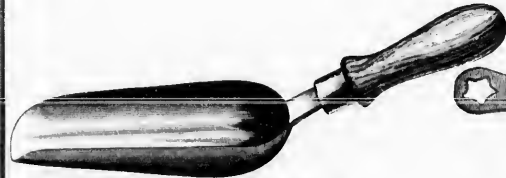
**Combination Shakers**  
Nickel Silver.  
No. 1, Small; No. 2, Medium; No. 3, Large  
Per Doz. No. 1, \$42. - Per Doz. No. 2, \$46.  
Per Doz. No. 3, \$52.



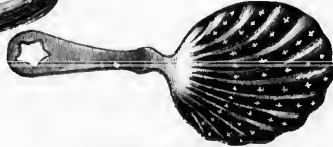
**Bottle Spice Box**  
Nickle Plated.  
Per Dozen - \$24.00



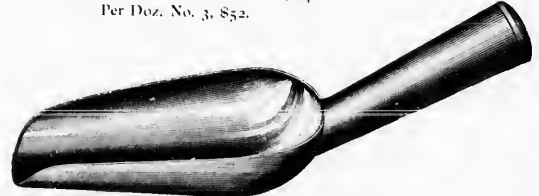
Ice Scoop  
- \$18.00



**Heavy Nickel Ice Scoop, Wood Handle**  
Per Dozen - - - - - \$27.00

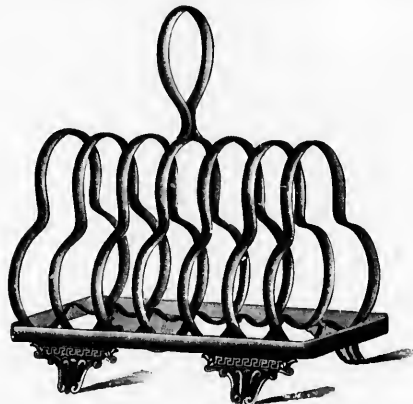


**Silver Plated Ribbed Strainer**  
Per Dozen - - - - - \$9.00  
Patent Whirling, Long Handled Bar Spoons, Per Dozen, \$30.00.



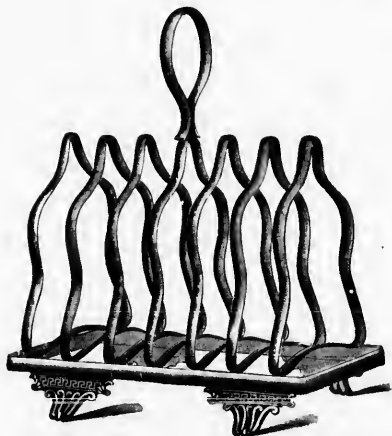
**Small Nickel or Copper Ice Scoop**  
Per Dozen - - - - - \$27.00

TOAST RACKS



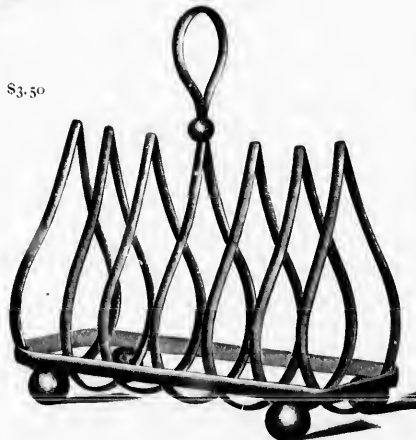
No. 2560. Toast Rack

List . . . . . \$3.50



No. 5250. Toast Rack

List . . . . . \$3.50



No. 5259. Toast Rack

List . . . . . \$4.00



No. 2  
Satin or Burnt  
Old S



# CANDELABRA AND CANDLESTICKS



**No. 18. Candlestick**  
 Satin or Burnished - - - \$5.50  
 Old Silver, Same Price



**No. 21. Candlestick**

Satin or Burnished - - - \$7.50  
 Old Silver, Same Price



**No. 25. Candelabrum**

Three Light, Satin or Burnished - - - \$12.00  
 Old Silver, Same Price



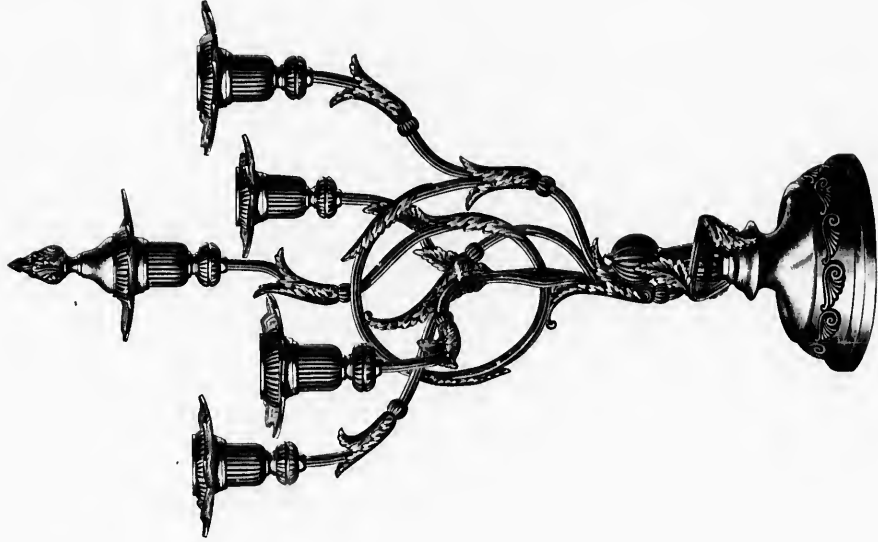
**No. 10. Candlestick**

Old Silver - - - - - \$5.00

\$4.00

THE ACME SILVER COMPANY

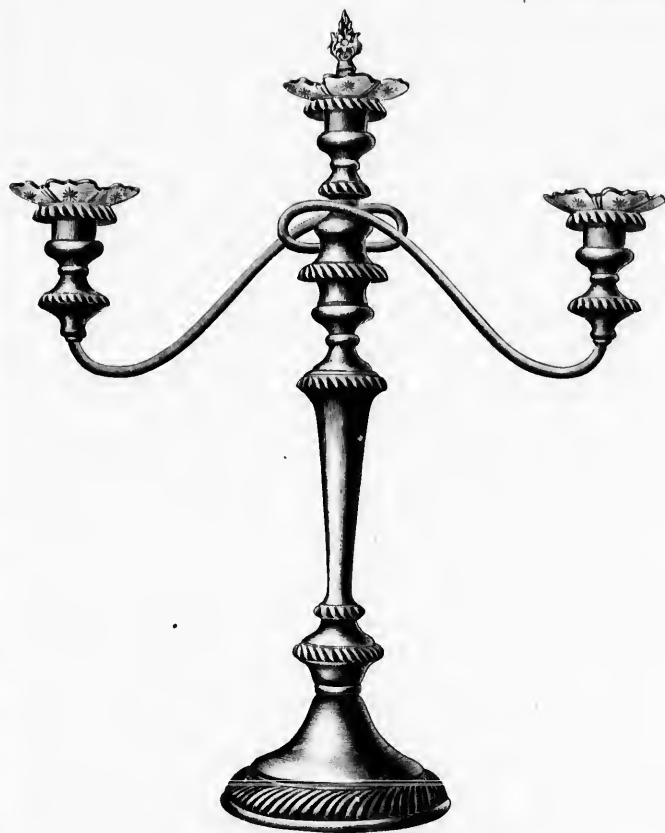
## CANDELABRA



No. 30. Candelabrum

Five Light, Satin or Burnished . . . . . \$28.00  
Old Silver, Same Price

THE ACME SILVER COMPANY



**No. 27. Candelabrum**

Three Light, Satin or Burnished - - - \$20.00

Old Silver, Same Price



**No. 23. Candelabrum**

Five Light, Satin or Burnished - - - \$26.00

Old Silver, Same Price

Five Light, Satin or Burnished - - - \$28.00  
Old Silver, Same Price

# CALL BELLS



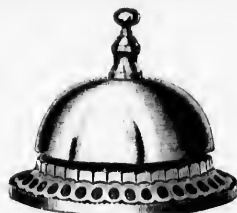
No. 091. Bell  
Per Doz. - - \$14.00



No. 3000. Call Bell  
Bronze Base - - \$19.00



No. 2250. Call Bell  
With Guard - - \$36.00



No. 3400. Call Bell  
Bronze Base - - \$24.00



No. 0102. Bell  
Per Doz. - - \$19.00



No. 9402. Call Bell  
Nickel Base - - \$20.00



No. 2200. Call Bell  
Marble Base - - \$30.00



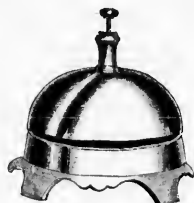
No. 050. Bell  
Silver - - - \$14.00



No. 9300. Call Bell  
Bronze Base - - \$15.00



No. 8800. Call Bell  
Revolving Strike - \$78.00  
Price per Dozen,



No. 9400. Call Bell  
Nickel Base - - \$16.00



No. 092. Bell  
Per Doz - - - \$16.00



No.  
Ebony Base,

Bell

\$19.00

Bell

\$16.00



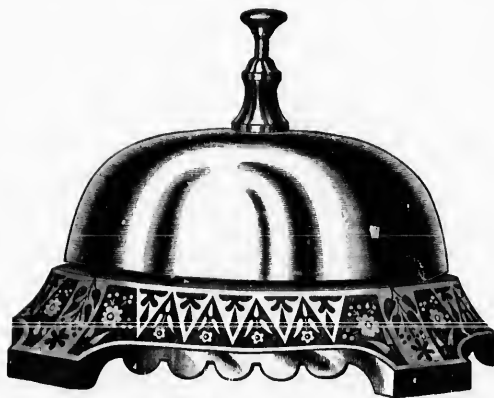
The Acme Klenzer or Polishing Fluid

\$3.50 Per Dozen.



No. 6500. Call Bell

Ebony Base, per Doz. - - - \$72.00



No. 9100. Hotel Gong

Gilt Base, per Doz. - - - - - \$128.00



No. 070. Bell

Per Doz. - - - - - \$12.50

THE ACME SILVER COMPANY

## GUARANTEE NOTICE

All Spoons and Forks bearing the stamp

**G. Rodgers, A 1**

are made of 18 per cent. nickel silver, and are plated and hand-burnished under my personal supervision, and standard of quality; each article is guaranteed perfect in finish and durability.

All knives bearing the stamp

**G. Rodgers**

12 DWT.  
TORONTO,

are plated on the best cast steel, are hand-burnished and warranted to give perfect satisfaction.

During the past forty-five years my goods have attained an enviable reputation for excellence and uniformity of quality. See that the trade mark reads and is spelled **G. Rodgers, A 1**, on spoons and forks, and **G. RODGERS, 12 DWT., TORONTO**, on plated knives.

**SECTIONAL PLATED GOODS** are stamped **XL**, and are guaranteed to wear equal to any Quadruple Plated Goods sold by any other manufacturers.

**Essentials in the Manufacture of Fine Flat Ware.**—FIRST—Fine nickel silver. SECOND—Thorough finish, making a perfectly smooth surface. (No rough surface, however well plated, will give serviceable wear.) THIRD—A well-deposited coat of silver, perfectly hardened by hand-burnishing. (Machinery does this imperfectly, a large amount of buffing being necessary to complete the finish, and this cuts off much of the silver.) FOURTH—Good designing and die work. All these points are found in my goods, enabling me to recommend them.

Sold only by the **Acme Silver Company, Toronto**, to whom all orders should be addressed.

**G. RODGERS,**

35 to 47 Hayter Street.

TORONTO, CANADA.

THE ACME SILVER COMPANY

TORONTO, ONT.

149

# Illustrated Price List

... OF ...

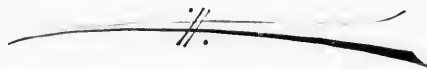


## Silver Plated Flat Ware

MANUFACTURED, PLATED AND BURNISHED UNDER  
THE PERSONAL SUPERVISION OF

# GEORGE RODGERS

KNOWN TO THE TRADE SINCE 1847.



FOR SALE BY

## The Acme Silver Company

SOLE MANUFACTURERS

TRADE MARK:

G. RODGERS, A I

.....

Particular attention is called to the Trade Mark, G. RODGERS, as an important distinguishing feature of these goods. Although manufacturers of Rogers' goods are innumerable, it is not in the interest of the dealer to handle any but the best known. Therefore, see that the guarantee on page 148, accompanies each 1/2 doz. Knives, Forks or Spoons.

## THE ACME SILVER COMPANY

### X. L. RODGERS

**T**HIS ware is the highest grade ever brought to your notice. Special care has been taken in producing articles of exquisite balance, pronounced far superior to fine old English goods and American imitations of them.

They are made in one plate only, being sectional plate with a coating of pure silver heavier than any in market, and are thoroughly hand-burnished. We guarantee them to out-wear ALL OTHERS.

While they are the highest in cost they are the most economical to the consumer.

The distinguishing colors of X. L. packages are chocolate and gold.

The Acme Silver Co.

TORONTO, Canada.



Tippec



# TEA AND COFFEE SPOONS



Tipped



Windsor



Belmont



Belmont



Royal



Royal



Newport



Stanley

# TABLE SPOONS - BEEF FORKS



Belmont



Tipped



Belmont



Newport



Stanley



Belmont  
Oyster Fork

TABLE FORKS - PICKLE FORKS - OYSTER FORKS



Stanley



Belmont  
Oyster Fork



Tipped



Belmont



Newport



Royal Long Pickle Fork



Royal  
Oyster Fork

BUTTER KNIVES AND INDIVIDUAL BUTTER KNIVES



Royal  
Butter Spreader



Royal



Belmont



Stanley



Royal  
Individual Butter



Mayflower  
Sugar Tongs

SUGAR SHELLS AND TONGS



Royal  
Individual Butter



Mayflower  
Sugar Tongs



Sheldon



Belmont



Belmont  
Sugar Sifter



Stanley



Royal  
Bon Bon Scoop

# CHEESE SCOOPS - BAR SPOONS



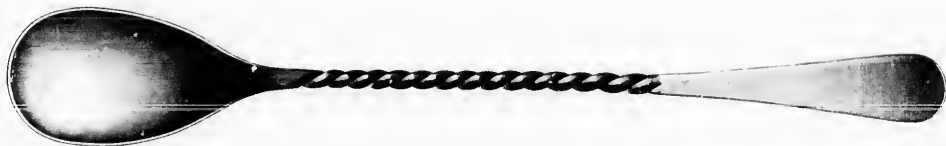
Windsor Twist Bar Spoon



Hollow Handle, Silver Soldered Royal Cheese Scoop



Solid Handle Royal Cheese Scoop



Long Twist Bar Spoon

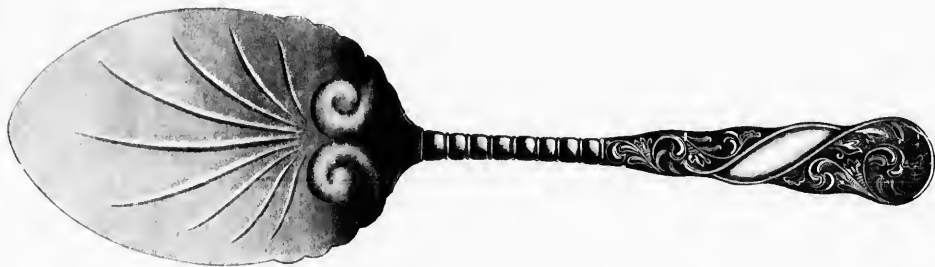


Small Bar Spoon, Twist

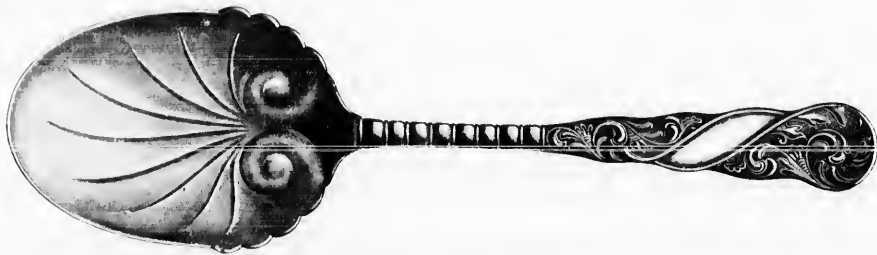
# BERRY SPOONS - CRUMB KNIFE



Belmont Salad or Large Berry Spoon



Royal Pie Knife. Length  $9\frac{1}{2}$  inches



Royal Nut or Berry Spoon



Royal Crumb Scoop

Small Bar Spoon, Twist



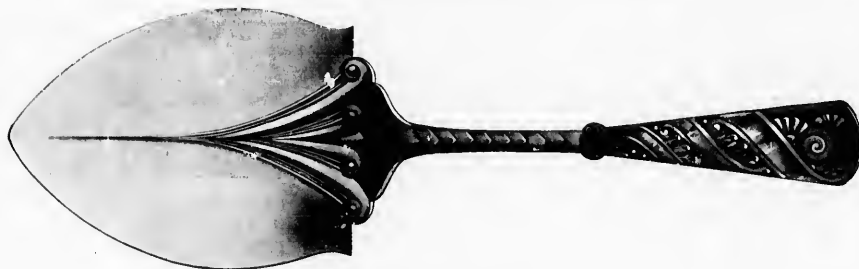
PIE KNIFE - FISH KNIFE AND FORK - SOUP LADLE



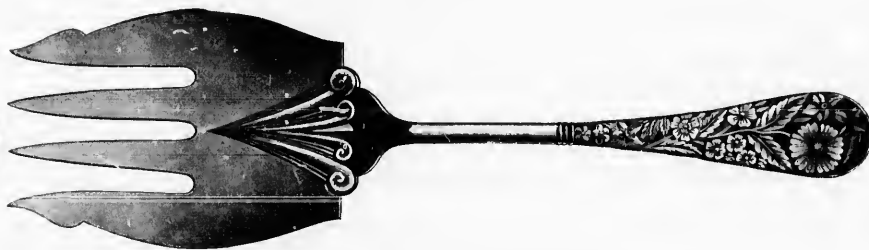
Royal Soup Ladle



Belmont Fish Knife. Length, 11½ Inches.



Belmont Pie Knife. Length, 10 Inches.



Mayflower Fish Fork. Length, 9 Inches.



Windsor  
Mustard Spoon

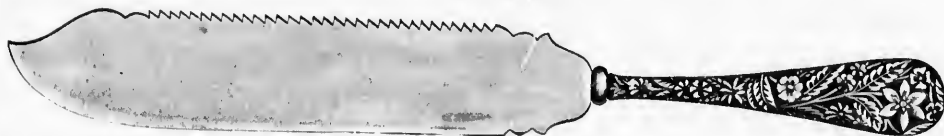


LE

# CAKE KNIVES - CAKE LIFTER - ORANGE SPOON MUSTARD SPOONS



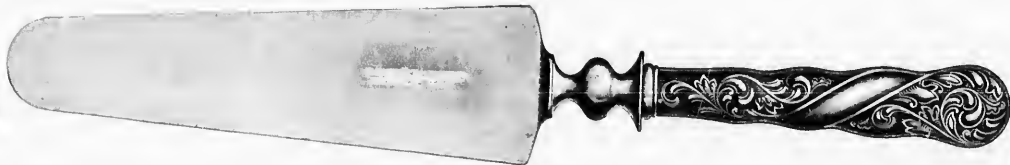
Royal Orange Spoon



Mayflower Cake Knife. Length, 10 $\frac{3}{4}$  Inches.



Westminster Cake Knife. Length, 10 $\frac{3}{4}$  Inches



Royal Pie Server. Length, 10 $\frac{1}{2}$  Inches. Hollow Handle



Windsor Mustard Spoon



Stanley Mustard Spoon



Westminster Mustard Spoon

# TABLE KNIVES - NUT CRACKS



No. 1900.  
Per Doz. \$16.00



Arabesque Windsor Medium Knife, Per Doz., \$8.50  
Arabesque Windsor Dessert Knife, Per Doz., 8.00



No. 12. Windsor Medium Knife, Per Doz., \$7.50  
No. 12. Windsor Dessert Knife, Per Doz. 7.00



Arabesque Square Medium Knife, Per Doz., \$8.50  
Arabesque Square Dessert Knife, Per Doz., 8.00



No. 12. Square Medium Knife, Per Doz., \$7.50  
No. 12. Square Dessert Knife, Per Doz., 7.00



Royal Hollow Handle Dessert Knife. Full Size. Per Doz., \$12.00  
Royal Hollow Handle Medium Knife. Full Size. Per Doz., 12.00



No. 1901.  
Per Doz. \$17.00

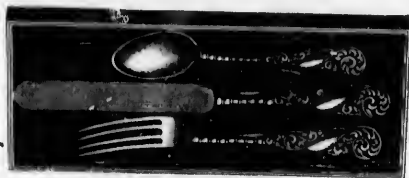


Westminster  
Salt Spoon

CHILDREN'S SETS AND SALT SPOONS



No. 1901. . . \$17.00  
Per Doz.



Royal Child's Set



Westminster  
Salt Spoon



Royal Salt Spoon



Belmont Child's Spoon



Belmont Child's Fork



Stanley Salt Spoon



Belmont Child's Knife

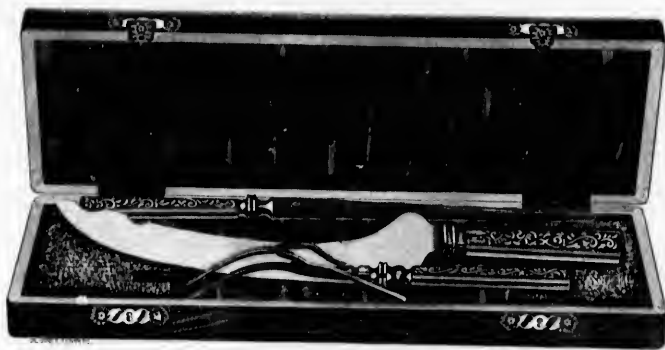


Windsor Salt  
Spoon

## THE ACME SILVER COMPANY

**CASED  
GOODS**

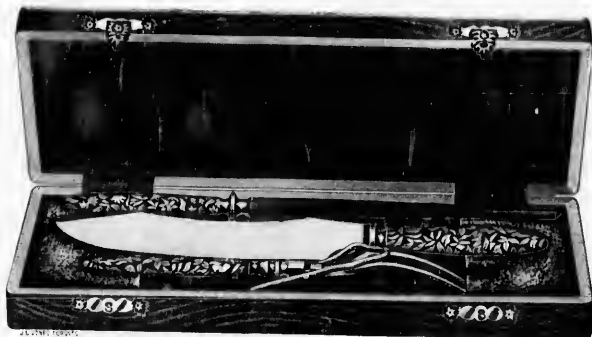
**HARDWOOD  
CASES**



No. 3. Carving Set

In Walnut Case  
In Plush or Leather  
In Satin Lined, Cardboard

\$18.00  
.. 14.00  
.. 10.00



No. 1. Carving Set

In Walnut Case...  
In Plush or Leather...  
In Satin Lined Cardboard

\$13.00  
11.00  
8.00



No. 2. Carving Set

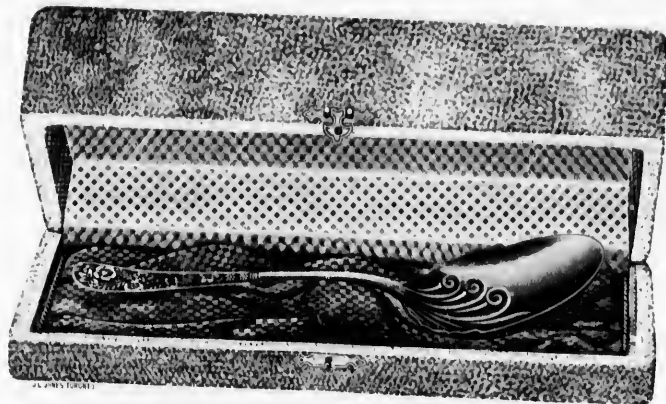
In Walnut Case...  
In Plush or Leather...  
In Satin Lined Cardboard

\$14.00  
12.00  
8.50



In Plush

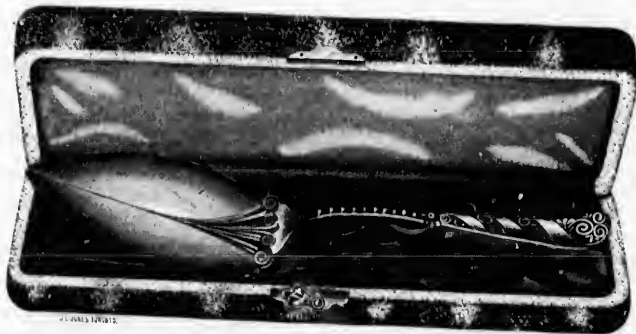
PLUSH  
CASES



Berry Spoon

In Plush or Leather Case

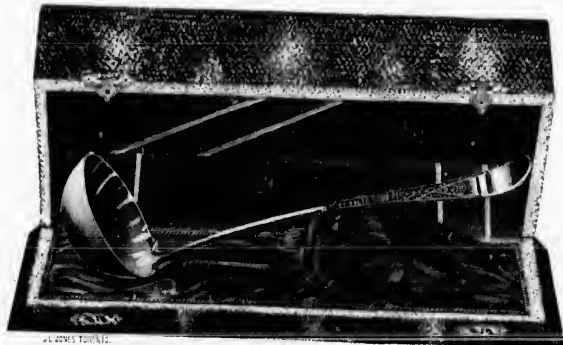
\$5.00



Pie Knife

In Plush or Leather Case

6.50



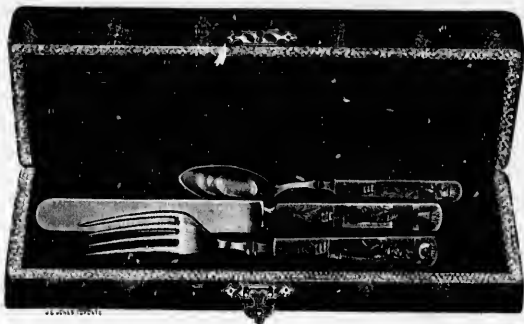
Soup Ladle

Medium, in Plush or Leather Case	\$7.00
Large, in Plush or Leather Case	8.00
Oyster, in Plush or Leather Case	0.50
Cream or Gravy, in Plush or Leather Case	3.50

OOD  
ES



\$14.00  
12.00  
8.50



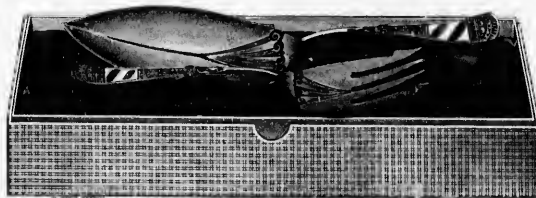
Child's Set. 3 Pieces.

In Plush or Leather Case..... \$4.00



Child's Set. 4 Pieces.

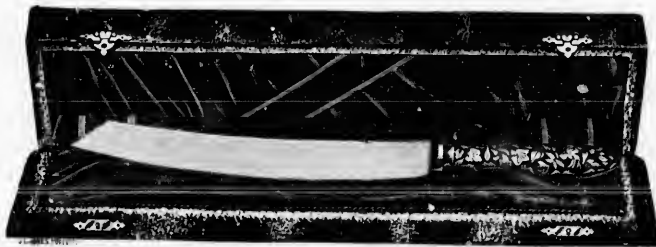
In Plush or Leather Case..... \$5.00



Fish Knife and Fork

In Plush or Leather Case..... \$10.50

In Satin Lined Cardboard..... 7.50



Bread Knife

In Plush or Leather Case..... \$6.00



Child's Set. 2 Pieces.

In Plush or Leather Case..... \$2.75

Child's K  
 Child's K  
 Six Nut P  
 Twelve N  
 Six Nut P  
 Twelve N  
 Twelve S  
 One Pie K  
 One Fish  
 One Crum  
 One Cake  
 One Fish  
 Six Dessert

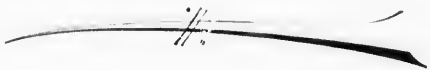
# THE ACME SILVER COMPANY

165

## GOODS IN MOROCCO CASES

In addition to Case Goods shown on preceding page, we keep the following in stock, and can furnish any other combination desired at short notice:

Child's Knife and Fork .....	2 pieces	PER CASE	
		\$2 75	
Child's Knife, Fork and Spoon .....	3 pieces	4 00	
Six Nut Picks .....	6 pieces	4 00	
Twelve Nut Picks .....	12 pieces	7 00	
Six Nut Picks and one Crack .....	7 pieces	6 75	
Twelve Nut Picks and one Crack .....	13 pieces	10 50	
Twelve S. H. Table Fruit Knives .....	12 pieces	7 00	
One Pie Knife .....		6 50	
One Fish Knife .....		6 50	
One Crumb Knife .....		7 00	
One Cake Knife .....		5 75	
One Fish Knife and Fork .....	2 pieces	10 50	
Six Dessert Knives, S.H., .....		6 00	
Six Medium Knives, S.H., .....		6 50	PER CASE
Twelve Dessert Knives, S.H., .....		11 00	6 50
Twelve Medium Knives, S.H., .....		12 00	11 00
Six Dessert Knives, S.H., and six Dessert Forks .....		12 00	12 00
Twelve Dessert Knives, S.H., and twelve Dessert Forks .....		22 00	22 00
Six Medium Knives and six Medium Forks .....		13 00	13 00
Twelve Medium Knives and twelve Medium Forks .....		25 00	25 00
One Butter Knife .....		3 00	3 00
One Sugar Shell .....		2 25	2 25
Two Sugar Shells .....		4 00	4 00
Two Butter Knives .....		4 00	4 00
One Butter Knife and one Sugar Shell .....		4 00	4 00



\$5.00



\$2.75

# THE ACME SILVER COMPANY

ALL PRICES QUOTED ARE PER DOZEN

### Tea Spoons

	EXTRA PLATE.		DOUBLE PLATE.		TRIPLE PLATE.		QUADRUPLE PLATE.		SECTIONAL PLATE.	
	No. 4.	No. 8.	No. 12.	No. 16.	No. 16.	No. 16.	No. 16.	No. 16.	X.L.	X.L.
Tipped.....	\$4 25	\$5 50	\$6 75	\$8 00	\$8 00	\$8 00	\$8 00	\$8 00	\$5 00	\$5 00
Fiddle.....	4 25	5 50	6 75	8 00	8 00	8 00	8 00	8 00	5 00	5 00
Newport.....	4 75	6 00	7 25	8 50	8 50	8 50	8 50	8 50	5 50	5 50
Windsor.....	4 75	6 00	7 25	8 50	8 50	8 50	8 50	8 50	5 50	5 50
Stanley.....	4 75	6 00	7 25	8 50	8 50	8 50	8 50	8 50	5 50	5 50
Sheldon.....	4 75	6 00	7 25	8 50	8 50	8 50	8 50	8 50	5 50	5 50
Laurel.....	4 75	6 00	7 25	8 50	8 50	8 50	8 50	8 50	5 50	5 50
Belmont.....	4 75	6 00	7 25	8 50	8 50	8 50	8 50	8 50	5 50	5 50
Royal.....	4 75	6 00	7 25	8 50	8 50	8 50	8 50	8 50	5 50	5 50
B. Hand Eng. (Satin Bright Cut)	7 00	8 25	9 50	10 75	10 75	10 75	10 75	10 75	7 75	7 75
C. Hand Eng. (Satin Bright Cut)	8 75	10 00	11 25	12 50	12 50	12 50	12 50	12 50	9 50	9 50

### Dessert Spoons

	No. 4.		No. 8.		No. 12.		No. 16.		X.L.	
	Tipped.....	\$7 50	\$9 50	\$11 50	\$13 50	\$13 50	\$13 50	\$13 50	\$13 50	\$8 03
Fiddle.....	7 50	9 50	11 50	13 50	13 50	13 50	13 50	13 50	8 03	8 03
Newport.....	8 50	10 50	12 50	14 50	14 50	14 50	14 50	14 50	9 03	9 03
Windsor.....	8 50	10 50	12 50	14 50	14 50	14 50	14 50	14 50	9 03	9 03
Stanley.....	8 50	10 50	12 50	14 50	14 50	14 50	14 50	14 50	9 03	9 03
Sheldon.....	8 50	10 50	12 50	14 50	14 50	14 50	14 50	14 50	9 03	9 03
Laurel.....	8 50	10 50	12 50	14 50	14 50	14 50	14 50	14 50	9 03	9 03
Belmont.....	8 50	10 50	12 50	14 50	14 50	14 50	14 50	14 50	9 03	9 03
Royal.....	8 50	10 50	12 50	14 50	14 50	14 50	14 50	14 50	9 03	9 03
B. Hand Eng. (Satin Bright Cut)	12 00	14 00	16 00	18 00	18 00	18 00	18 00	18 00	13 13	13 13
C. Hand Eng. (Satin Bright Cut)	14 50	16 50	18 50	20 50	20 50	20 50	20 50	20 50	15 03	15 03

### Table Spoons

	No. 4.		No. 8.		No. 12.		No. 16.		X.L.	
	Tipped.....	\$8 50	\$11 00	\$13 50	\$16 00	\$16 00	\$16 00	\$16 00	\$16 00	\$10 00
Fiddle.....	8 50	11 00	13 50	16 00	16 00	16 00	16 00	16 00	10 00	10 00
Newport.....	9 50	12 00	14 50	17 00	17 00	17 00	17 00	17 00	11 00	11 00
Windsor.....	9 50	12 00	14 50	17 00	17 00	17 00	17 00	17 00	11 00	11 00
Stanley.....	9 50	12 00	14 50	17 00	17 00	17 00	17 00	17 00	11 00	11 00
Sheldon.....	9 50	12 00	14 50	17 00	17 00	17 00	17 00	17 00	11 00	11 00

### Table Spoons—(Continued)

	EXTRA PLATE.		DOUBLE PLATE.		TRIPLE PLATE.		QUADRUPLE PLATE.		SECTIONAL PLATE.	
	No. 4.	No. 8.	No. 12.	No. 16.	No. 16.	No. 16.	No. 16.	No. 16.	X.L.	X.L.
Laurel.....	\$9 50	\$12 00	\$14 50	\$17 00	\$17 00	\$17 00	\$17 00	\$17 00	\$11 00	\$11 00
Belmont.....	9 50	12 00	14 50	17 00	17 00	17 00	17 00	17 00	11 00	11 00
Royal.....	9 50	12 00	14 50	17 00	17 00	17 00	17 00	17 00	11 00	11 00
B. Hand Eng. (Satin Bright Cut)	14 00	16 50	19 00	21 50	21 50	21 50	21 50	21 50	15 50	15 50
C. Hand Eng. (Satin Bright Cut)	16 50	19 00	21 50	24 00	24 00	24 00	24 00	24 00	18 00	18 00

### Dessert Forks

	No. 4.		No. 8.		No. 12.		No. 16.		X.L.	
	Tipped.....	\$7 50	\$9 50	\$11 50	\$13 50	\$13 50	\$13 50	\$13 50	\$13 50	\$8 03
Fiddle.....	7 50	9 50	11 50	13 50	13 50	13 50	13 50	13 50	8 03	8 03
Newport.....	8 50	10 50	12 50	14 50	14 50	14 50	14 50	14 50	9 03	9 03
Windsor.....	8 50	10 50	12 50	14 50	14 50	14 50	14 50	14 50	9 03	9 03
Stanley.....	8 50	10 50	12 50	14 50	14 50	14 50	14 50	14 50	9 03	9 03
Sheldon.....	8 50	10 50	12 50	14 50	14 50	14 50	14 50	14 50	9 03	9 03
Laurel.....	8 50	10 50	12 50	14 50	14 50	14 50	14 50	14 50	9 03	9 03
Belmont.....	8 50	10 50	12 50	14 50	14 50	14 50	14 50	14 50	9 03	9 03
Royal.....	8 50	10 50	12 50	14 50	14 50	14 50	14 50	14 50	9 03	9 03
B. Hand Eng. (Satin Bright Cut)	12 00	14 00	16 00	18 00	18 00	18 00	18 00	18 00	13 13	13 13
C. Hand Eng. (Satin Bright Cut)	14 50	16 50	18 50	20 50	20 50	20 50	20 50	20 50	15 03	15 03

### Medium Forks

	No. 4.		No. 8.		No. 12.		No. 16.		X.L.	
	Tipped.....	\$8 50	\$11 00	\$13 50	\$16 00	\$16 00	\$16 00	\$16 00	\$16 00	\$10 00
Fiddle.....	8 50	11 00	13 50	16 00	16 00	16 00	16 00	16 00	10 00	10 00
Newport.....	9 50	12 00	14 50	17 00	17 00	17 00	17 00	17 00	11 00	11 00
Windsor.....	9 50	12 00	14 50	17 00	17 00	17 00	17 00	17 00	11 00	11 00
Stanley.....	9 50	12 00	14 50	17 00	17 00	17 00	17 00	17 00	11 00	11 00
Sheldon.....	9 50	12 00	14 50	17 00	17 00	17 00	17 00	17 00	11 00	11 00
Laurel.....	9 50	12 00	14 50	17 00	17 00	17 00	17 00	17 00	11 00	11 00
Belmont.....	9 50	12 00	14 50	17 00	17 00	17 00	17 00	17 00	11 00	11 00
Royal.....	9 50	12 00	14 50	17 00	17 00	17 00	17 00	17 00	11 00	11 00
B. Hand Eng. (Satin Bright Cut)	14 00	16 50	19 00	21 50	21 50	21 50	21 50	21 50	15 50	15 50
C. Hand Eng. (Satin Bright Cut)	16 50	19 00	21 50	24 00	24 00	24 00	24 00	24 00	18 00	18 00

### Pie Forks

CUTTING TINE, SAME SIZE AS DESSERT FORK

	EXTRA PLATE.		DOUBLE PLATE.		TRIPLE PLATE.		SECTIONAL PLATE.	
	No. 4.	No. 8.	No. 12.	No. 16.	No. 16.	No. 16.	No. 16.	X.L.
Tipped.....	\$7 50	\$9 50	\$11 50	\$13 50	\$13 50	\$13 50	\$13 50	\$8 03
Fiddle.....	7 50	9 50	11 50	13 50	13 50	13 50	13 50	8 03
Windsor.....	8 50	10 50	12 50	14 50	14 50	14 50	14 50	9 03
Westminster.....	8 50	10 50	12 50	14 50	14 50	14 50	14 50	9 03
Winthrop.....	8 50	10 50	12 50	14 50	14 50	14 50	14 50	9 03

### French or After-Dinner Coffee Spoons

	EXTRA PLATE.		DOUBLE PLATE.		TRIPLE PLATE.	
	No. 4.	No. 8.	No. 12.	No. 16.	No. 16.	No. 16.
Tipped.....	\$4 00	\$5 00	\$6 00	\$7 25	\$7 25	\$7 25
Windsor.....	4 00	5 00	6 00	7 25	7 25	7 25
Sheldon.....	4 75	6 00	7 25	8 50	8 50	8 50
Westminster.....	4 75	6 00	7 25	8 50	8 50	8 50
Belmont.....	4 75	6 00	7 25	8 50	8 50	8 50
Winthrop.....	4 75	6 00	7 25	8 50	8 50	8 50
Mayflower.....	4 75	6 00	7 25	8 50	8 50	8 50
Royal.....	4 75	6 00	7 25	8 50	8 50	8 50
B. Hand Eng. (Satin Bright Cut)	7 00	8 25	9 50	10 75	10 75	10 75
C. Hand Eng. (Satin Bright Cut)	8 75	10 00	11 25	12 50	12 50	12 50

### Child's or Medium Coffee Spoons

	No. 4.		No. 8.		No. 12.	
	Windsor.....	\$4 75	\$6 00	\$7 25	\$8 50	\$8 50
Belmont.....	4 75	6 00	7 25	8 50	8 50	8 50
Newport.....	4 75	6 00	7 25	8 50	8 50	8 50
Windsor.....	4 75	6 00	7 25	8 50	8 50	8 50
Laurel.....	4 75	6 00	7 25	8 50	8 50	8 50
Mayflower.....	4 75	6 00	7 25	8 50	8 50	8 50
Royal.....	4 75	6 00	7 25	8 50	8 50	8 50
B. Hand Eng. (Satin Bright Cut)	7 00	8 25	9 50	10 75	10 75	10 75
C. Hand Eng. (Satin Bright Cut)	8 75	10 00	11 25	12 50	12 50	12 50

Gold Bowls \$3 00 per dozen extra. Plain or Satin Bowls as desired.

Double, Triple and Quadruple "Sectional Plate" furnished, correct proportion added.

See that all Spoons and Forks are stamped "G. Rodgers, A1" or "X.L." "G. Rodgers, 12 dwt." on Knives.



# THE ACME SILVER COMPANY

167

RT FORK

DOUBLE PLATE.	SECTIONAL PLATE.
No. 12.	X.L.
50	\$8 03
50	8 03
50	9 03
50	9 03
50	9 03

Spoons

DOUBLE PLATE.	TRIPLE PLATE.
No. 8.	No. 12.
\$5 00	\$0 00
6 00	7 25
6 00	7 25
6 00	7 25
6 00	7 25
6 00	7 25
6 00	7 25
6 00	7 25
6 00	7 25
8 25	9 50
10 00	11 25

Spoons

No. 8.	No. 12.
\$0 00	\$7 25
6 00	7 25
6 00	7 25
6 00	7 25
6 00	7 25
6 00	7 25
8 25	9 50
10 00	11 25

Plain or Satin

### Orange Spoons

	EXTRA PLATE.	DOUBLE PLATE.	TRIPLE PLATE.	SECTIONAL PLATE.
	No. 4.	No. 8.	No. 12.	X.L.
Royal	\$6 00	\$7 50	\$9 00	\$7 00
Windsor	6 00	7 50	9 00	7 00
B. Hand Engraved	8 25	9 75	11 25	9 25
(Satin Bright Cut)				
C. Hand Engraved	10 00	11 50	13 00	11 00
(Satin Bright Cut)				

Bowls Gold Plated, \$4 00 extra

### Mustard Spoons

	EXTRA PLATE.	DOUBLE PLATE.	TRIPLE PLATE.
	No. 4.	No. 8.	No. 12.
Tipped	\$4 25	\$5 50	\$6 75
Fiddle	4 25	5 50	6 75
Newport	4 75	6 00	7 25
Windsor	4 75	6 00	7 25
Laurel	4 75	6 00	7 25
Belmont	4 75	6 00	7 25
Royal	4 75	6 00	7 25
B. Hand Engraved	7 00	8 25	9 50
(Satin Bright Cut)			
C. Hand Engraved	8 75	10 00	11 25
(Satin Bright Cut)			

### Salt Spoons

	No. 4.	No. 8.	No. 12.
Tipped	\$3 75	\$5 00	\$6 25
Fiddle	3 75	5 00	6 25
Newport	4 25	5 50	6 75
Windsor	4 25	5 50	6 75
Laurel	4 25	5 50	6 75
Belmont	4 25	5 50	6 75
Royal	4 25	5 50	6 75
B. Hand Engraved	3 75	5 00	6 25
(Satin Bright Cut)	6 50	7 75	9 00
C. Hand Engraved	8 25	9 50	10 75
(Satin Bright Cut)			

Bowls Gold Plated, \$2 00 extra

### Bar Spoons

	SMALL		
	EXTRA PLATE.	DOUBLE PLATE.	TRIPLE PLATE.
	No. 4.	No. 8.	No. 12.
Tipped	\$4 25	\$5 50	\$6 75
Windsor, Fluted Handle	4 50	5 75	7 00
Westminster	4 50	5 75	7 00
Winthrop	4 50	5 75	7 00
Windsor, Twist	6 00	7 25	8 50

	MEDIUM		
Tipped	\$4 75	\$6 00	\$7 25
Windsor, Fluted Handle	6 00	7 50	9 00
Westminster	6 00	7 50	9 00
Winthrop	6 00	7 50	9 00

	LARGE		
Tipped	\$5 00	\$6 50	\$8 00
Windsor, Fluted Handle	7 50	9 00	10 50
Westminster	7 50	9 00	10 50
Winthrop	7 50	9 00	10 50
Windsor, Long Twist	8 50	10 00	11 50
Windsor, Extra Long Twist	9 00	11 00	13 00

	JULEP STRAINERS		
Star	\$12 00	\$15 00	\$19 00

### Berry or Nut Spoons

	SATIN FINISH OR BURNISHED BOWLS		
	No. 4.	No. 8.	No. 12.
Windsor	\$24 00	\$30 00	\$36 00
Lenox	24 00	30 00	36 00
Westminster	24 00	30 00	36 00
Belmont	24 00	30 00	36 00
Winthrop	24 00	30 00	36 00
Mayflower	24 00	30 00	36 00
Royal	24 00	30 00	36 00
B. Hand Engraved	33 00	39 00	45 00
(Satin Bright Cut)			
C. Hand Engraved	33 00	39 00	45 00
(Satin Bright Cut)			

Double, Triple and Quadruple "Sectional Plate" furnished, correct proportion added.

See that all Spoons and Forks are stamped "G. Rodgers, A1," or "X.L." "G. Rodgers, 12 dwt." on Knives.

### Salad or Large Bowl Berry Spoons

	EXTRA PLATE.	DOUBLE PLATE.	TRIPLE PLATE.
	No. 4.	No. 8.	No. 12.
Windsor	\$30 00	\$36 00	\$42 00
Lenox	30 00	36 00	42 00
Westminster	30 00	36 00	42 00
Belmont	30 00	36 00	42 00
Winthrop	30 00	36 00	42 00
Mayflower	30 00	36 00	42 00
B. Hand Engraved	39 00	45 00	51 00
(Satin Bright Cut)			
C. Hand Engraved	39 00	45 00	51 00
(Satin Bright Cut)			
Bowls Satin Hand Engraved	\$9 00 extra		
Bowls Gold Plated	9 00 extra		

### Butter Knives

FLAT HANDLES			
	No. 3.	No. 6.	No. 9.
Windsor	\$9 00	\$11 00	\$13 00
Winthrop	9 00	11 00	13 00
Westminster	9 00	11 00	13 00

BENT HANDLES			
Tipped	\$8 00	\$10 00	\$12 00
Fiddle	8 00	10 00	12 00
Windsor	9 00	11 00	13 00
Winthrop	9 00	11 00	13 00

TWIST OR REVERSED HANDLES			
Tipped	\$10 00	\$12 00	\$14 00
Fiddle	10 00	12 00	14 00
Spray	10 00	12 00	14 00
Windsor	10 50	12 50	14 50
Ruby	10 50	12 50	14 50
Lenox	10 50	12 50	14 50
Westminster	10 50	12 50	14 50
Belmont	10 50	12 50	14 50
Winthrop	10 50	12 50	14 50

# THE ACME SILVER COMPANY

## Butter Knives—(Continued)

### TWIST OR REVERSED HANDLES

	EXTRA PLATE. No. 3.	DOUBLE PLATE. No. 6.	TRIPLE PLATE. No. 9.
Mayflower .....	\$10 50	\$12 50	\$14 50
Royal .....	10 50	12 50	14 50
B. Hand Engraved. (Satin Bright Cut) .....	16 00	18 00	20 00
C. Hand Engraved. (Satin Bright Cut) .....	16 00	18 00	20 00

Blades Satin Hand Engraved..\$6 00 extra

Blades Gold Plated..... 9 00 extra

### Individual Butter Knives

	No. 4.	No. 8.	No. 12.
Windsor.....	\$9 00	\$11 00	\$13 00
Royal .....	9 00	11 00	13 00
B. Hand Engraved. (Satin Bright Cut) .....	15 50	15 50	17 50
C. Hand Engraved. (Satin Bright Cut) .....	14 00	16 00	18 00

### Individual Butter Spreaders

#### FANCY BLADES

	No. 4.	No. 8.	No. 12.
Royal .....	\$8 00	\$10 00	\$12 00

Blades Satin Hand Engraved..\$6 00 extra

Blades Gold Plated..... 6 00 extra

### Sugar Shells

	No. 4.	No. 8.	No. 12.
Tipped .....	\$8 00	\$10 00	\$12 00
Fiddle .....	8 00	10 00	12 00
Windsor .....	9 00	11 00	13 00
Newport .....	9 00	11 00	13 00
Laurel .....	9 00	11 00	13 00
Sheldon .....	9 00	11 00	13 00
Belmont .....	9 00	11 00	13 00

## Sugar Shells—(Continued)

	EXTRA PLATE. No. 4.	DOUBLE PLATE. No. 8.	TRIPLE PLATE. No. 12.
Stanley .....	\$9 00	\$11 00	\$13 00
Royal .....	9 00	11 00	13 00
B. Hand Engraved. (Satin Bright Cut) .....	12 00	14 00	16 00
C. Hand Engraved. (Satin Bright Cut) .....	14 00	16 00	18 00

Bowls Satin Hand Engraved... \$6 00 extra

Bowls Gold Plated..... 4 00 extra

### Sugar Sifters

	No. 4.	No. 8.	No. 12.
Belmont .....	\$18 00	\$24 00	\$30 00

Gold Bowls, \$6 00 per dozen extra

### Bon Bon Tongs

	No. 4.	No. 8.	No. 12.
Royal .....	\$15 00	\$18 00	\$21 00
B. Hand Engraved (Satin Bright Cut) .....	24 00	27 00	30 00
C. Hand Engraved (Satin Bright Cut) .....	24 00	27 00	30 00

### Sugar Tongs

#### SMALL OR TETE-A-TETE SIZE

	No. 4.	No. 8.	No. 12.
Windsor.....	\$18 00	\$21 00	\$24 00
Lenox .....	18 00	21 00	24 00
Westminster .....	18 00	21 00	24 00
Winthrop .....	18 00	21 00	24 00
Mayflower .....	18 00	21 00	24 00
Royal .....	18 00	21 00	24 00
B. Hand Engraved (Satin Bright Cut) .....	27 00	30 00	33 00
C. Hand Engraved (Satin Bright Cut) .....	27 00	30 00	33 00

Double, Triple and Quadruple "Sectional Plate" furnished, correct proportion added.

See that all Spoons and Forks are stamped "G. Rodgers, A1," or "X.L." "G. Rodgers, 12 dwt." on Knives.

## Oyster Forks

### THREE TINES

	EXTRA PLATE. No. 4.	DOUBLE PLATE. No. 8.	TRIPLE PLATE. No. 12.
Windsor .....	\$7 00	\$9 00	\$11 00
Lenox .....	7 00	9 00	11 00
Westminster .....	7 00	9 00	11 00
Belmont .....	7 00	9 00	11 00
Winthrop .....	7 00	9 00	11 00
Mayflower .....	7 00	9 00	11 00
Savarin .....	7 00	9 00	11 00
Royal .....	7 00	9 00	11 00
B. Hand Engraved (Satin Bright Cut) .....	12 00	14 00	16 00
C. Hand Engraved (Satin Bright Cut) .....	14 00	16 00	18 00

### TWO TINES

Tipped .....	\$6 00	\$8 00	\$10 00
Fiddle .....	6 00	8 00	10 00
Windsor .....	7 00	9 00	11 00
Westminster .....	7 00	9 00	11 00
Winthrop .....	7 00	9 00	11 00
B. Hand Engraved (Satin Bright Cut) .....	12 00	14 00	16 00
C. Hand Engraved (Satin Bright Cut) .....	14 00	16 00	18 00

### Pickle or Chow Chow Forks

#### LONG FLUTED HANDLES, BARBED TINES

	No. 4.	No. 8.	No. 12.
Windsor .....	\$12 00	\$13 50	\$15 00
Westminster .....	12 00	13 50	15 00
Winthrop .....	12 00	13 50	15 00
Royal .....	12 00	13 50	15 00
B. Hand Engraved (Satin Bright Cut) .....	14 00	16 00	18 00
C. Hand Engraved (Satin Bright Cut) .....	14 50	16 50	18 50

## Pickle or

Tipped .....

Fiddle .....

Oval .....

Windsor .....

Westminster .....

Winthrop .....

Windsor .....

Westminster .....

Winthrop .....

B. Hand Eng  
(Satin Bright

C. Hand Eng  
(Satin Bright

## Tea C

Royal .....

## SAW ED

Windsor .....

Westminster .....

Winthrop .....

Mayflower .....

Royal .....

B. Hand E  
(Satin Bright

C. Hand E  
(Satin Bright

Blac

Blac

# THE ACME SILVER COMPANY

## Pickle or Chow Chow Forks—(Continued)

	CUTTING TINE		
	EXTRA PLATE. No. 4.	DOUBLE PLATE. No. 8.	TRIPLE PLATE. No. 12.
Tipped .....	\$6 50	\$8 00	\$9 50
Fiddle .....	6 50	8 00	9 50
Oval .....	7 00	8 50	10 00
Windsor .....	7 50	9 00	10 50
Westminster .....	7 50	9 00	10 50
Winthrop .....	7 50	9 00	10 50

### Nut Picks

	No. 4.	No. 8.	No. 12.
Windsor .....	\$4 75	\$6 00	\$7 25
Westminster .....	4 75	6 00	7 25
Winthrop .....	4 75	6 00	7 25
B. Hand Engraved (Satin Bright Cut)	7 00	8 25	9 50
C. Hand Engraved (Satin Bright Cut)	8 75	10 00	11 25

## Tea Caddy or Small Bon Bon Scoops

	No. 4.	No. 8.	No. 12.
Royal .....	\$12 00	\$14 00	\$16 00

Bowls Gold Plated, \$6 00 extra

### Cake Knives

SAW EDGE. SATIN FINISH OR BURNISHED BLADES

	No. 4.	No. 8.	No. 12.
Windsor .....	\$42 00	\$51 00	\$60 00
Westminster .....	42 00	51 00	60 00
Winthrop .....	42 00	51 00	60 00
Mayflower .....	42 00	51 00	60 00
Royal .....	42 00	51 00	60 00
B. Hand Engraved (Satin Bright Cut)	51 00	60 00	60 00
C. Hand Engraved (Satin Bright Cut)	51 00	60 00	60 00

Blades Satin Hand Engraved \$9 00 extra  
Blades Gold Plated 9 00 extra

## Pie Knives

	EXTRA PLATE. No. 4.	DOUBLE PLATE. No. 8.	TRIPLE PLATE. No. 12.
Windsor .....	\$42 00	\$51 00	\$60 00
Lenox .....	42 00	51 00	60 00
Westminster .....	42 00	51 00	60 00
Belmont .....	42 00	51 00	60 00
Winthrop .....	42 00	51 00	60 00
Mayflower .....	42 00	51 00	60 00
Royal .....	42 00	51 00	60 00
Royal, Hollow Handle .....	54 00	63 00	72 00
B. Hand Engraved (Satin Bright Cut)	51 00	60 00	69 00
C. Hand Engraved (Satin Bright Cut)	51 00	60 00	69 00

Blades Satin Hand Engraved \$9 00 extra  
Blades Gold Plated 9 00 extra

## Fish Forks

	No. 4.	No. 8.	No. 12.
Windsor .....	\$42 00	\$51 00	\$60 00
Lenox .....	42 00	51 00	60 00
Westminster .....	42 00	51 00	60 00
Belmont .....	42 00	51 00	60 00
Winthrop .....	42 00	51 00	60 00
Mayflower .....	42 00	51 00	60 00
Royal .....	42 00	51 00	60 00
Royal, Hollow Handle .....	54 00	63 00	72 00
B. Hand Engraved (Satin Bright Cut)	54 00	63 00	72 00
C. Hand Engraved (Satin Bright Cut)	54 00	63 00	72 00

Tines Satin Hand Engraved \$6 00 extra  
Tines Gold Plated 6 00 extra

## Fish Knives

SAVIN FINISH OR BURNISHED BLADES

	No. 4.	No. 8.	No. 12.
Windsor .....	\$42 00	\$51 00	\$60 00
Westminster .....	42 00	51 00	60 00

Double, Triple and Quadruple "Sectional Plate" furnished, correct proportion added.  
See that all Spoons and Forks are stamped "G. Rodgers, A1," or "X.L." "G. Rodgers, 12 dwt." on Knives.

## Fish Knives—(Continued)

SATIN FINISH OR BURNISHED BLADES

	EXTRA PLATE. No. 4.	DOUBLE PLATE. No. 8.	TRIPLE PLATE. No. 12.
Belmont .....	42 00	51 00	60 00
Winthrop .....	42 00	51 00	60 00
Mayflower .....	42 00	51 00	60 00
Royal .....	42 00	51 00	60 00
Royal, Hollow Handle .....	54 00	63 00	72 00
B. Hand Engraved (Satin Bright Cut)	54 00	63 00	72 00
C. Hand Engraved (Satin Bright Cut)	54 00	63 00	72 00

Blades Satin Hand Engraved \$12 00 extra  
Blades B. Engraved 6 00 extra  
Blades C. Engraved 12 00 extra  
Blades Gold Plated 12 00 extra

## Pie Servers

	No. 4.	No. 8.	No. 12.
Royal Hollow Handle .....	\$42 00	\$51 00	\$60 00

## Cheese Scoops

	No. 4.	No. 8.	No. 12.
Royal .....	\$36 00	\$45 00	\$54 00
Royal, Hollow Handle .....	48 00	60 00	72 00

Engraved Blades, \$6 00 extra

## Crumb Knives

	No. 4.	No. 8.	No. 12.
Royal .....	\$48 00	\$60 00	\$72 00
Royal, Hollow Handle .....	60 00	72 00	84 00
B. Hand Engraved (Satin Bright Cut)	60 00	72 00	84 00
C. Hand Engraved (Satin Bright Cut)	60 00	72 00	84 00

Blades Satin Hand Engraved \$12 00 extra  
Blades Gold Plated 15 00 extra

# THE ACME SILVER COMPANY

## Child's Knives

	EXTRA PLATE. No. 4.	DOUBLE PLATE. No. 8.	TRIPLE PLATE. No. 12.
Windsor .....	\$9 00	\$10 50	\$12 00
Westminster .....	9 00	10 50	12 00
Belmont .....	9 00	10 50	12 00
Winthrop .....	9 00	10 50	12 00
Mayflower .....	9 00	10 50	12 00
Royal .....	9 00	10 50	12 00
B. Hand Engraved (Satin Bright Cut) .....	14 50	16 00	17 50
C. Hand Engraved (Satin Bright Cut) .....	14 50	16 00	16 50

Blades Satin Hand Engraved, \$6 00 extra

## Child's Forks

	No. 4.	No. 8.	No. 12.
Windsor .....	\$7 00	\$8 50	\$10 00
Westminster .....	7 00	8 50	10 00
Belmont .....	7 00	8 50	10 00
Winthrop .....	7 00	8 50	10 00
Mayflower .....	7 00	8 50	10 00
Royal .....	7 00	8 50	10 00
B. Hand Engraved (Satin Bright Cut) .....	12 00	13 50	15 00

## Child's Sets

KNIFE, FORK AND SPOON. SETS ON FANCY CARDS

	EXTRA PLATE.	TRIPLE PLATE.
Windsor .....	\$24 00	\$33 00
Westminster .....	24 00	33 00
Winthrop .....	24 00	33 00
Belmont .....	24 00	33 00
Mayflower .....	24 00	33 00
Royal .....	24 00	33 00
B. Hand Engraved (Satin Bright Cut) .....	33 00	42 00
C. Hand Engraved (Satin Bright Cut) .....	33 00	42 00

## Child's Sets—(Continued)

SETS IN SATIN LINED CASES

	EXTRA PLATE.	TRIPLE PLATE.
Windsor .....	\$27 00	\$36 00
Westminster .....	27 00	36 00
Belmont .....	27 00	36 00
Winthrop .....	27 00	36 00
Mayflower .....	27 00	36 00
Royal .....	27 00	36 00
B. Hand Engraved (Satin Bright Cut) .....	37 00	45 00
C. Hand Engraved (Satin Bright Cut) .....	37 75	46 75

## Cream or Sauce Ladles

SATIN FINISH OR BURNISHED BOWLS

	EXTRA PLATE. No. 4.	DOUBLE PLATE. No. 8.	TRIPLE PLATE. No. 12.
Tipped .....	\$10 50	\$13 50	\$16 50
Windsor .....	13 50	16 50	19 50
Westminster .....	13 50	16 50	19 50
Winthrop .....	13 50	16 50	19 50
Belmont .....	13 50	16 50	19 50
Royal .....	13 50	16 50	19 50
B. Hand Engraved (Satin Bright Cut) .....	18 50	21 50	24 50
C. Hand Engraved (Satin Bright Cut) .....	18 50	21 50	24 50

Bowls Satin Hand Engraved, \$6 00 extra

Bowls Gold Plated, 6 00 extra

## Gravy Ladles

	No. 4.	No. 8.	No. 12.
Tipped .....	\$15 00	\$19 50	\$24 00
Fiddle .....	15 00	19 50	24 00
Windsor .....	18 00	22 50	27 00
Lenox .....	18 00	22 50	27 00
Westminster .....	18 00	22 50	27 00
Belmont .....	18 00	22 50	27 00

## Gravy Ladles—(Continued)

	EXTRA PLATE. No. 4.	DOUBLE PLATE. No. 8.	TRIPLE PLATE. No. 12.
Winthrop .....	18 00	22 50	27 00
Mayflower .....	18 00	22 50	27 00
Royal .....	18 00	22 50	27 00
B. Hand Engraved (Satin Bright Cut) .....	27 00	31 00	36 00
C. Hand Engraved (Satin Bright Cut) .....	27 00	31 00	36 00

Bowls Satin Hand Engraved, \$9 00 extra

Bowls Gold Plated, 9 00 extra

## Oyster Ladles

SATIN FINISH OR BURNISHED BOWLS

	No. 4.	No. 8.	No. 12.
Tipped .....	\$33 00	\$42 00	\$51 00
Fiddle .....	33 00	42 00	51 00
Windsor .....	39 00	48 00	57 00
Lenox .....	39 00	48 00	57 00
Westminster .....	39 00	48 00	57 00
Belmont .....	39 00	48 00	57 00
Winthrop .....	39 00	48 00	57 00
Mayflower .....	39 00	48 00	57 00
Royal .....	39 00	48 00	57 00
B. Hand Engraved (Satin Bright Cut) .....	51 00	60 00	69 00
C. Hand Engraved (Satin Bright Cut) .....	51 00	60 00	69 00

Bowls Satin Hand Engraved \$10 00 extra

Bowls Gold Plated, 10 00 extra

## Medium Ladles

	No. 4.	No. 8.	No. 12.
Tipped .....	\$42 00	\$54 00	\$66 00
Fiddle .....	42 00	54 00	66 00
Windsor .....	48 00	60 00	72 00
Lenox .....	48 00	60 00	72 00
Westminster .....	48 00	60 00	72 00
Belmont .....	48 00	60 00	72 00

Double, Triple and Quadruple "Sectional Plate" furnished, correct proportion added.

See that all Spoons and Forks are stamped "G. Rodgers, At," or X.L." "G. Rodgers, 12 dwt." on Knives.

# THE ACME SILVER COMPANY

### Medium Ladles—(Continued)

	EXTRA PLATE. No. 4.	DOUBLE PLATE. No. 8.	TRIPLE PLATE. No. 12.
Winthrop .....	48 00	60 00	72 00
Mayflower .....	48 00	60 00	72 00
Royal .....	48 00	60 00	72 00
B. Hand Engraved. (Satin Bright Cut) .....	60 00	72 00	84 00
C. Hand Engraved. (Satin Bright Cut) .....	60 00	72 00	84 00
Bowls Satin Hand Engraved ..	\$12 00 extra		
Bowls Gold Plated .....	12 00 extra		

### Soup Ladles

#### SATIN FINISHED OR BURNISHED BOWLS

	EXTRA PLATE. No. 4.	DOUBLE PLATE. No. 8.	TRIPLE PLATE. No. 12.
Tipped .....	\$45 00	\$57 00	\$69 00
Fiddle .....	45 00	57 00	69 00
Windsor .....	51 00	63 00	75 00
Lenox .....	51 00	63 00	75 00
Westminster .....	51 00	63 00	75 00
Belmont .....	51 00	63 00	75 00
Winthrop .....	51 00	63 00	75 00
Mayflower .....	51 00	63 00	75 00
Royal .....	51 00	63 00	75 00
B. Hand Engraved (Satin Bright Cut) .....	63 00	75 00	87 00
C. Hand Engraved (Satin Bright Cut) .....	63 00	75 00	87 00
Bowls Satin Hand Engraved ..	\$12 00 extra		
Bowls Gold Plated .....	15 00 extra		

### Re-Plating

	EXTRA PLATE. No. 4.	DOUBLE PLATE. No. 8.	TRIPLE PLATE. No. 12.
Tipped Tea, Mustard and Salt Spoons .....	\$1 50	\$2 00	\$3 00
Fiddle Tea, Mustard and Salt Spoons .....	1 50	2 00	3 00
Dessert Spoons and Forks ..	2 62	3 75	4 87
Medium Forks and Table Spoons .....	3 50	5 00	6 50
FANCY PATTERNS			
Tea, Mustard and Salt Spoons .....	\$1 75	\$2 25	\$3 50
Dessert Spoons and Forks ..	3 00	4 00	5 00
Medium Forks and Table Spoons .....	4 00	5 50	7 00
Re-finishing all Spoons and Forks before plating, unless otherwise ordered, 80 cents per dozen. Discount on application.			

Double, Triple and Quadruple "Sectional Plate" furnished, correct proportion added.

See that all Spoons and Forks are stamped "G. Rodgers, A1," or "X.L." "G. Rodgers, 12 dwt." on Knives.



# THE ACME SILVER COMPANY

## INDEX

	PAGES
Ash Receivers.....	130
Baking or Pudding Dishes.....	68, 69, 70
Bar Bowls and Spice Holders.....	135
Bar Goods.....	140, 141
Berry Dishes.....	54, 61
Biscuit Jars.....	111, 112, 135
Blotting Pads.....	128
Bon Bon Dishes.....	127
Bon Bon Tongs.....	127
Breakfast Casters.....	77, 78, 79
Bureau Boxes and Pin Cushions.....	133
Cake Baskets.....	7, 9, 11, 13, 19, 71, 74, 136, 137
Calendar.....	63, 64, 65, 66, 67
Call Bells.....	131
Candelabra.....	140, 146, 147
Candlesticks.....	143, 144, 145
Card Receivers.....	130, 143
Card Waiters.....	35, 38
Case Goods.....	162, 164
Celery.....	122
Chocolate Pot.....	138
Champagne Tap.....	141
Cheese Dish and Cover.....	115
Champagne Cup.....	92
Cigar Box.....	130
Cleaning Preparation (Acme-Klenzer).....	147
Coffee Sets, French.....	16, 17
Combination Caster and Fruit Dish.....	83
Communion Ware.....	132
Communion Plates.....	132
Cover Dish.....	138
Cups, Children's.....	90, 91, 92
Cups and Saucers.....	88, 89
Cup and Plate.....	88
Crumb Trays.....	112
Crumb Brush.....	112

	PAGES
Dessert, Sugars, Cream and Spoon Holders.....	166, 168
Dessert Sets on Stands.....	105
Dinner Casters.....	80, 87, 136, 137, 139
Egg Stands and Cups.....	113
Epergnes.....	59, 53
Entree Dishes.....	69, 79, 138
Fireman's Trumpet.....	95
Flasks.....	131
French Coffee Sets.....	16, 17
Fruit Dishes.....	54, 61
Glove Box.....	130
Goods in Case (flatware).....	162, 164
Goblets.....	93, 94
Handkerchief Box.....	130
Hotel Ware.....	135, 141
Hotel Gong.....	140, 147
Ice Tubs.....	126
Ice Pitchers.....	42, 49
Ice Pitcher Sets.....	42, 46
Individual Casters.....	77, 79
Ink Stands.....	128
Jelly Dish.....	138
Knife Rosts.....	129
Lunch Casters.....	78, 79
Marmalade.....	103, 112
Match Holders.....	131
Mixer.....	141
Napkin Rings.....	116, 121
Nut Cracks.....	160
Nut Picks.....	112
Orange Bowl.....	112
Pap Bowl and Plate.....	78, 79
Pepper and Salt Casters.....	123, 125
Peppers and Salts.....	128
Pen Wiper.....	133
Photograph Frames.....	100, 104
Pickle Casters.....	100, 104

	PAGES
Pitchers, Hotel.....	136, 137, 139, 140
Pitchers, Ice.....	43, 49
Pitchers, Water.....	35, 38
Presentation Trowels.....	134
Prize Cups.....	97, 99
Salad Bowls and Servers.....	62
Sails.....	123, 125, 140
Sardine Boxes.....	131
Soda Holders.....	121
Spoon Holders.....	7, 24, 100, 110, 136, 139
Steak Dish.....	110
Steak Dish.....	68, 138
Sugar and Cream, Dessert.....	7, 24, 105, 168
Sugar and Cream, Hotel.....	136, 137, 139
Sugar Sifter.....	115
Swing Kettles.....	7, 8, 13, 16, 20, 21, 25
Syrup Cups.....	7, 13, 16, 21, 114, 115, 136, 139
Tea Caddies.....	25
Tea Kettles.....	7, 8, 13, 16, 20, 21, 25
Tea Sets.....	7, 24
Tete-a-tete Sets.....	25
Tilting Set.....	44, 45, 46
Toast Racks.....	142
Tooth Pick Holders.....	131
Tureens.....	79, 138
Urns.....	9, 11
Vegetable Dishes.....	69, 76, 138
Waiters.....	23, 26, 43
Water Pitchers.....	6, 8, 16, 39, 41, 46, 140
Water Sets.....	39, 43
Wine Coolers.....	126, 135
Wine Cup.....	92

### FLAT WARE.

Flat Ware.....	131, 160
Price List to Flat Ware.....	166, 170
Price List to Goods in Cases.....	165
Re-Plating.....	170

PAGES  
137, 139, 140  
43, 49  
35, 38  
134  
97, 99  
62  
123, 125, 140  
131  
121  
110, 136, 139  
110  
68, 138  
24, 105, 108  
136, 137, 139  
115  
20, 21, 25  
115, 136, 139  
25  
20, 21, 25  
7, 24  
25  
44, 45, 46  
142  
131  
70, 138  
9, 11  
60, 70, 138  
23, 26, 43  
41, 49, 140  
39, 43  
126, 135  
92  
  
151, 160  
166, 170  
165  
170

