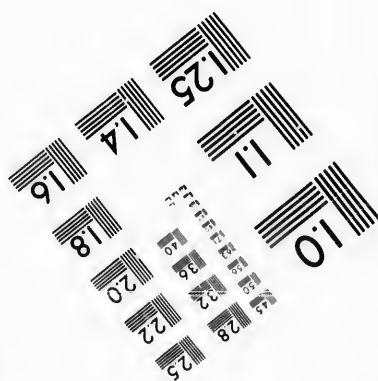
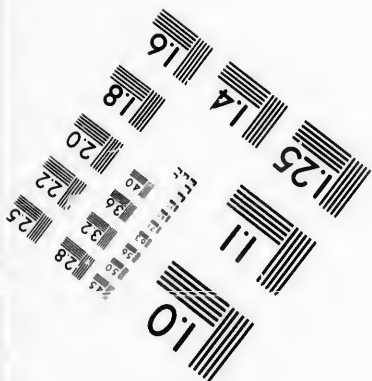
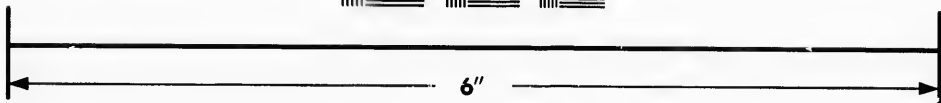
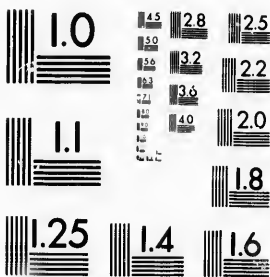
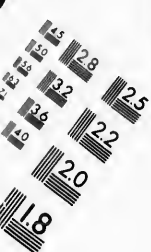


**IMAGE EVALUATION  
TEST TARGET (MT-3)**



**Photographic  
Sciences  
Corporation**

23 WEST MAIN STREET  
WEBSTER, N.Y. 14580  
(716) 872-4503



**CIHM/ICMH  
Microfiche  
Series.**

**CIHM/ICMH  
Collection de  
microfiches.**



Canadian Institute for Historical Microreproductions / Institut canadien de microreproductions historiques



**© 1987**

Technical and Bibliographic Notes/Notes techniques et bibliographiques

The Institute has attempted to obtain the best original copy available for filming. Features of this copy which may be bibliographically unique, which may alter any of the images in the reproduction, or which may significantly change the usual method of filming, are checked below.

L'Institut a microfilmé le meilleur exemplaire qu'il lui a été possible de se procurer. Les détails de cet exemplaire qui sont peut-être uniques du point de vue bibliographique, qui peuvent modifier une image reproduite, ou qui peuvent exiger une modification dans la méthode normale de filmage sont indiqués ci-dessous.

- Coloured covers/  
Couverture de couleur
- Covers damaged/  
Couverture endommagée
- Covers restored and/or laminated/  
Couverture restaurée et/ou pelliculée
- Cover title missing/  
Le titre de couverture manque
- Coloured maps/  
Cartes géographiques en couleur
- Coloured ink (i.e. other than blue or black)/  
Encre de couleur (i.e. autre que bleue ou noire)
- Coloured plates and/or illustrations/  
Planches et/ou illustrations en couleur
- Bound with other material/  
Relié avec d'autres documents
- Tight binding may cause shadows or distortion along interior margin/  
La reliure serrée peut causer de l'ombre ou de la distorsion le long de la marge intérieure
- Blank leaves added during restoration may appear within the text. Whenever possible, these have been omitted from filming/  
Il se peut que certaines pages blanches ajoutées lors d'une restauration apparaissent dans le texte, mais, lorsque cela était possible, ces pages n'ont pas été filmées.
- Additional comments:/  
Commentaires supplémentaires:

- Coloured pages/  
Pages de couleur
- Pages damaged/  
Pages endommagées
- Pages restored and/or laminated/  
Pages restaurées et/ou pelliculées
- Pages discoloured, stained or foxed/  
Pages décolorées, tachetées ou piquées
- Pages detached/  
Pages détachées
- Showthrough/  
Transparence
- Quality of print varies/  
Qualité inégale de l'impression
- Includes supplementary material/  
Comprend du matériel supplémentaire
- Only edition available/  
Seule édition disponible
- Pages wholly or partially obscured by errata slips, tissues, etc., have been refilmed to ensure the best possible image/  
Les pages totalement ou partiellement obscurcies par un feuillet d'errata, une pelure, etc., ont été filmées à nouveau de façon à obtenir la meilleure image possible.

This item is filmed at the reduction ratio checked below/  
Ce document est filmé au taux de réduction indiqué ci-dessous.

10X	12X	14X	16X	18X	20X	22X	24X	26X	28X	30X	32X
					/						

The copy filmed here has been reproduced thanks to the generosity of:

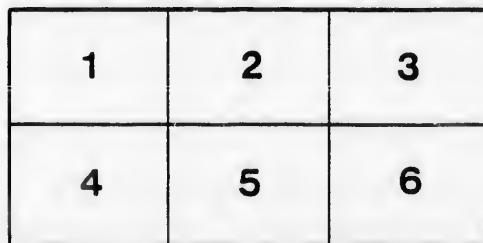
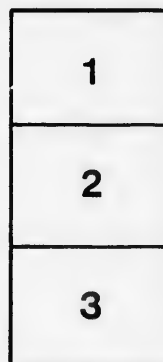
D. B. Weldon Library  
University of Western Ontario  
(Regional History Room)

The images appearing here are the best quality possible considering the condition and legibility of the original copy and in keeping with the filming contract specifications.

Original copies in printed paper covers are filmed beginning with the front cover and ending on the last page with a printed or illustrated impression, or the back cover when appropriate. All other original copies are filmed beginning on the first page with a printed or illustrated impression, and ending on the last page with a printed or illustrated impression.

The last recorded frame on each microfiche shall contain the symbol  $\rightarrow$  (meaning "CONTINUED"), or the symbol  $\nabla$  (meaning "END"), whichever applies.

Maps, plates, charts, etc., may be filmed at different reduction ratios. Those too large to be entirely included in one exposure are filmed beginning in the upper left hand corner, left to right and top to bottom, as many frames as required. The following diagrams illustrate the method:



L'exemplaire filmé fut reproduit grâce à la générosité de:

D. B. Weldon Library  
University of Western Ontario  
(Regional History Room)

Les images suivantes ont été reproduites avec le plus grand soin, compte tenu de la condition et de la netteté de l'exemplaire filmé, et en conformité avec les conditions du contrat de filmage.

Les exemplaires originaux dont la couverture en papier est imprimée sont filmés en commençant par le premier plat et en terminant soit par la dernière page qui comporte une empreinte d'impression ou d'illustration, soit par le second plat, selon le cas. Tous les autres exemplaires originaux sont filmés en commençant par la première page qui comporte une empreinte d'impression ou d'illustration et en terminant par la dernière page qui comporte une telle empreinte.

Un des symboles suivants apparaîtra sur la dernière image de chaque microfiche, selon le cas: le symbole  $\rightarrow$  signifie "A SUIVRE", le symbole  $\nabla$  signifie "FIN".

Les cartes, planches, tableaux, etc., peuvent être filmés à des taux de réduction différents. Lorsque le document est trop grand pour être reproduit en un seul cliché, il est filmé à partir de l'angle supérieur gauche, de gauche à droite, et de haut en bas, en prenant le nombre d'images nécessaire. Les diagrammes suivants illustrent la méthode.

LIST OF VOTERS,

—FOR THE—

TOWNSHIP OF ADELAIDE,

—FOR THE—

YEAR 1876.



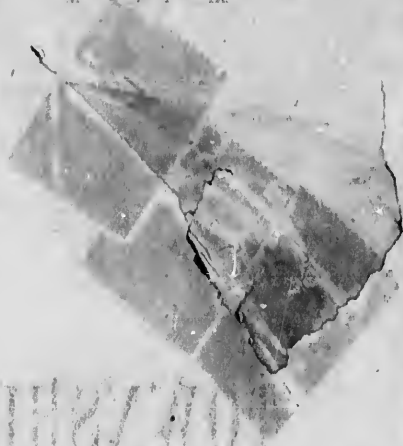
*Filed July 17 1876*  
*H. J. DEN*

STRATHROY:

PRINTED AT THE "DISPATCH" BOOK AND JOB PRINTING HOUSE.

1876.

LIST OF VOTERS



WARRANT OF APPOINTMENT

YEAR 1870

*Handwritten signature or name, possibly "Wm. H. ..."*

FOR THE YEAR

# LIST OF VOTERS,

—FOR THE—

## TOWNSHIP OF ADELAIDE,

—FOR THE—

YEAR 1876.



STRATHROY:  
PRINTED AT THE "DISPATCH" BOOK AND JOB PRINTING HOUSE.

1876.

[Faint, illegible text, possibly bleed-through from the reverse side of the page]

No.

1  
1  
1  
2  
2

1  
1  
1  
1  
1  
1  
1  
1  
1  
2  
2  
2

3  
6  
6  
11  
20  
25  
27



## SUB-DIVISION NO. I.

No. on Assessment Roll.	NAME.	Conces'ion	No. of Lot or Part Lot.	Other Description.
77	Arrand, John.....	N E R 3	W half 8.....	Owner.
89	Adair, James.....	do	3 Centre part 12.....	
90	Adair, John.....	do	3 N end 12.....	
96	Adair, William.....	do	3 W half 15.....	
133	Arrand, Thomas.....	do	2 S half W half 7.....	
224	Adair, David.....	do	1 N part 12.....	
1	Bathram, Joshua.....	do	5 S W half 1.....	Tenant.
19	Beer, Henry.....	do	4 E half 1.....	
25	Burdick, Ira.....	do	4 S half W half 1.....	
88	Brown, William jr.....	do	3 W half 12.....	
94	Basker, Joseph.....	do	3 E half 14.....	
135	Brooks, John.....	do	2 E quarter 7.....	
132	Brooks, James.....	do	2 N half W half 7.....	
154	Burrows, Henry.....	do	2 E half 15.....	
158	Brown, James sr.....	do	2 W part 17.....	
159	Brown, William sr.....	do	2 E part 17.....	
201	Brent, William.....	do	1 W part 8.....	Owner.
233	Brock, George jr.....	do	1 E half 17.....	
8	Cleminegg, Abraham.....	do	5 W part 4.....	
36	Cooper, Samuel.....	do	4 S half N half 7.....	
53	Campbell, John.....	do	4 15.....	
71	Cuddy, Thomas.....	do	3 E 4 5, W half 9.....	
72	Cuddy, Alfred.....	do	3 E part W part 6.....	
78	Cuddy, John.....	do	3 E half 8.....	
122	Clelland, Robert.....	do	2 W part 3.....	
123	Conkey, William.....	do	2 N E part 3.....	
130	Crummer, John.....	do	2 W half 6.....	
131	Crummer, Herbert.....	do	2 E part 6.....	
134	Cave, Joseph.....	do	2 W part E half 7.....	
141	Cuddy, James jr.....	do	2 E half 9.....	
142	Clarke, James.....	do	2 E half 10.....	
188	Carthy, William.....	do	1 E half 2.....	
191	Clelland, Robert jr.....	do	1 N W quarter 3.....	
192	Clelland, Allen.....	do	1 W part 4.....	
193	Clelland, David.....	do	1 W part 4.....	
222	Callighan, Terance.....	do	1 S E quarter 12.....	
229	Chapman, William.....	do	1 15.....	
230	Carthy, John.....	do	1 W half 16.....	
26	Donaldson, John.....	do	4 S W quarter 4.....	Owner.
66	Dale, Henry.....	do	3 S half N half 4.....	
67	Dale, William.....	do	3 N half N half 4.....	
119	Dempster, Robert.....	do	2 E half 1.....	
205	Downer, John W.....	do	1 N quarter 9.....	
221	Donelly, Samuel.....	do	1 N E part 11.....	
210	Douglas, James.....	do	1 N W part 11.....	

List of Voters for the Township of Adelaide, Division No 1.

No. on Assessment Roll.	NAME.	Concession.	No of Lot or Part Lot.	Other Description.
41	Emery, Joseph.....	N E R	4 W half 10.....	
208	Enright, John.....	do	1 Part 11.....	
2	Fair, George W.....	do	5 N part 1.....	
11	Fitzpatrick, Peter.....	do	5 E part 5.....	Owner.
48	Frazer, James.....	do	4 W half 13.....	
82	Freel, Hugh.....	do	3 W half 10.....	
85	Freel, Robert.....	do	3 W quarter 11.....	
86	Freel, Thomas.....	do	3 E half W half 11.....	
87	Freel, William John.....	do	3 E part 11.....	
213	Fitzpatrick, William.....	do	3 E part 11.....	Tenant.
214	Fitzpatrick, James.....	do	1 Sub-lots on 11.....	39 acres Vil. of Ad.
10	George, George.....	do	5 E half 5.....	Tenant.
27	Glover, James.....	do	4 E half 4.....	
62	Galloway, Shalto.....	do	3 E half 2.....	
100	Gerry, Richard.....	do	3 W part 17.....	
125	Galloway, Wm.....	do	2 E half 4.....	Tenant.
126	Galloway, James.....	do	2 W quarter 5.....	
145	George, James.....	do	2 E half 11.....	
200	Galsworthy, John.....	do	1 E half 7.....	
227	Gale, William.....	do	1 W half 14.....	
228	Groom, Edward.....	do	1 E half 14.....	
231	Glenn, George.....	do	1 E half 16.....	
12	Herrington, Trueman.....	do	5 Gore 6.....	
15	Herrington, Josiah.....	do	5 W part 9.....	
32	Hoffner, Joseph.....	do	4 W half 6.....	Tenant.
39	Hendrick, John.....	do	4 W half 9.....	
69	Healey, John.....	do	3 W quarter 5.....	
97	Hanley, John.....	do	3 E half 15.....	
98	Henderson, James M.....	do	3 W half 16.....	
136	Hamilton, James.....	do	2 W quarter 8.....	
137	Hamilton, John jr.....	do	2 E half W half 8.....	
156	Henderson, Wm. N.....	do	2 W half E half 16.....	
195	Healey, James.....	do	1 S W part 5.....	
207	Hoare, John S.....	do	1 Sub-lots on 11.....	Vil of Adelaide.
218	Hodgson, John.....	do	1 Sub-lots on 11.....	do
209	Hamilton, John sr.....	do	1 { Sub-lots on 11..... & S W part 12.....	do
220	Houlton, Henry.....	do	1 Sub-lots on 11.....	do
223	Henry, William.....	do	1 S half N half 12.....	
74	Johnstone, Alexander.....	do	3 E half 6.....	
146	Johnstone, James.....	do	2 W half 12.....	
13	Keyser, Joseph.....	do	5 Gore 7.....	
35	Keyser, John sr.....	do	4 N half 7.....	
46	Kingstone, Paul jr.....	do	4 N E part 12.....	
47	Kingstone, Peter.....	do	4 S E part 12.....	
91	Kingstone, Paul, sr.....	do	3 S E part 12.....	
80	Kelley, John.....	do	3 N end 13.....	
81	Kelley, George.....	do	3 N half N E half 9.....	
197	Kincade, Robert.....	do	3 S E 1/4 N E half 9.....	
		do	1 W half 2.....	

## List of Voters for the Township of Adelaide, Division No. 1.

No. on Assessment Roll.	NAME.	Concession	No. of Lot or Part Lot.	Other Description.
9	Langan, John.....	N E R 5	E part 4.....	
24	Langan, James jr.....	do 4	N W quarter 4.....	
5	Moore, Michael.....	do 5	N E part W part 2..	
20	Murray, John.....	do 4	E half 2.....	
28	Murray, Patrick.....	do 4	W half 5.....	
40	McKenzie, Duncan.....	do 4	E half 9.....	
42	McLeish, Malcolm.....	do 4	E part 10.....	
45	McLachlan, Duncan.....	do 4	W half 12.....	
49	McBride, Alexander.....	do 4	E part 13.....	Tenant.
50	McLean, Donald.....	do 4	E part 13.....	Owner.
52	McIntosh, Donald.....	do 4	E part 14.....	
54	McDonald, John.....	do 4	Gore 16.....	
55	McKeen, Archibald.....	do 4	Gore 17.....	
56	McKeen, William.....	do 4	Gore 17.....	
59	Morgan, David.....	do 3	W half 1.....	Owner.
60	Morgan, Robert.....	do 3	W half 1.....	Tenant.
68	McDonough, Michael.....	do 3	E half S half 4.....	
73	McLachlan, John.....	do 3	E half 6.....	
76	McNabb, William.....	do 3	E half 7.....	
92	Mee, Patrick.....	do 3	S part 13.....	
93	Mee, Charles.....	do 3	W half 14.....	
99	McLelland, John.....	do 3	E half 16.....	
101	McCubbin, Daniel jr.....	do 3	E half 17.....	Owner.
118	Morgan, William.....	do 3	W half 1.....	
120	McChesney, William.....	do 2	W half 2.....	
128	Miller, .....	do 2	Centre part 5.....	
127	Miller, .....	do 2	Centre part 5.....	
129	McCabe.....	do 2	E part 5.....	
153	McCabe.....	do 2	W half 16.....	
185	Maniell.....	do 1	W half 1.....	
186	Maniell.....	do 1	E half 1.....	
211	Moore, John.....	do 1	N part 10.....	
232	Montague, Wm.....	do 1	W half 17.....	
7	O'Neil, William.....	do 5	N part 3.....	
30	Ogden, John.....	do 4	W half E half 5.....	Owner.
31	Ogden, William A.....	do 4	E quarter 5.....	Owner.
64	Ogden, Isaac N.....	do 3	S half N half 3.....	Owner.
51	Pedden, John.....	do 4	W part 14.....	
153	Pennington, Thomas.....	do 2	W half 15.....	
219	Parker, Frank.....	do 1	Sub-lots on 11.....	Vil. of Adelaide.
65	Rowland, Edward.....	do 3	E half 1.....	
138	Ray, Alexander.....	do 2	W half E half 8.....	
144	Raisen, William.....	do 2	E quarter 11.....	
143	Raisen, Thomas.....	do 2	W half E half 11.....	
157	Regan, Michael.....	do 2	E quarter 16.....	
225	Radcliff, William.....	do 1	S half W half 13.....	
226	Radcliff, Stephen.....	do 1	E part 13.....	
4	Smith, Jacob.....	do 5	N W part 2.....	
6	Smith, George.....	do 5	E half 2.....	
1.	Stevens, Benjamin.....	do 5	W part 8.....	

ription.

of Ad.

ide.

List of Voters for the Township of Adelaide, Division No. 2.

No. on Assessment Roll.	NAME.	Concession	No of Lot or Part Lot.	Other Description.
18	Smith, Thomas	N E R 4	W half 1	
23	Schryer, Jacob	do 3&4	S quarter 3, N 1/3	
34	Smith, Russell B.	do 4	E part 6	
33	Smith, John	do 4	N E part 6	
39	Stevens, Robert W.	do 4	W half 8	
37	Stevens, Charles	do 4	E half 8	
44	Sharpe, Thomas H.	do 4	W part 11	
61	Shields, James	do 4	E part 11	
121	Shields, John	do 3	W half 2	
139	Smith, Absalom	do 2	E half 2	
147	Seed, Hugh	do 2	E quarter 8	
148	Seed, George sr.	do 2	N half E half 12	
152	Seed, George jr.	do 2	S half E half 12	
150	Seed, David	do 2	S half W half 14	
151	Seed, Robert	do 2	S half N half 13	
149	Seed, Thomas	do 2	S half W half 13	
202	Still, Henry	do 1	N end 13	
		do 1	E part 8 and S W pt 9	
22	Thorp, Nelson	do 4	N part 3	
21	Thorp, Neil	do 4	Centre part 3	
3	Wells, George	do 6	E part 1	
75	Wilkin, George	do 3	W half 7	
79	Whiting, John	do 3	S E quarter 9	
83	Warner, John	do 3	W half E half 10	
84	Warner, Thomas	do 3	E half W half 10	
124	Wiley, Hugh	do 2	W half 4	
140	Wilkin, David	do 2	W half 9	
189	Wiley, John jr.	do 1	S half W half 3	
190	Wiley, David D.	do 1	S E quarter 3	
194	Wiley, David A.	do 1	E part 4	
196	Woodlock, John	do 1	W half 6	
198	Walsh, Patrick sr.	do 1	E quarter 6	
197	Walsh, Patrick jr.	do 1	W half E half 6	
199	Walsh, Thomas	do 1	W half 7	

SUB-DIVISION NO. 2.

340	Armstrong, Joseph	S E R 2	W quarter 5	
341	Aberneathy, James	do 2	E half W half 5	Owner.
405	Alderson, Amos	do 3	W half 3	
415	Alexander, Joseph jr.	do 3	W half E half 8	
416	Alexander, Robert	do 3	E quarter 8	
422	Alexander, Wm. H.	do 2	E half W half 11	
423	Alexander, William	do 3	Centre part 11	
424	Alexander, Joseph C.	do 3	E quarter 11	
552	Arnett, Lewis	do 5	Sub lot 5 B E	Vil. of Kerwood.
290	Barrett, Richard	do 1	E part 10	
299	Brock, Richard	do 1	E half 13	
298	Brock, George sr.	do 1	W half 13	
300	Brock, Arthur	do 1	W half 14	
302	Barron, John	do 1	W half 15	

List of Voters for the Township of Ad. Sec. Division No. 2.

No. on Assessment Roll.	NAME.	Concession	No. of Lot or Part Lot	Other Description.
333	Brown, Samuel	S E R	2 W quarter 1	
343	Bradshaw, Richard	do	2 W half E half 8	
369	Bishop, Edward	do	2 E quarter 8	
350	Brown, James	do	2 W half 6	
357	Brown, George	do	2 E quarter 13	
365	Bishop, George sr.	do	2 E half 14	
418	Brown, Joseph jr.	do	3 East half 9	
427	Brothers, George E.	do	3 Centre part E 1/2 12	Tenant
437	Bond, Samuel	do	3 N half S half 15	
497	Bolton, Richard W.	do	3 E half 11	
527	Barber, John W.	do	5 N E part of W pt 1	
544	Baker, Robert	do	5 Centre part E half 6	
579	Beeton, John	do	5 { Centre pt E half 6 { and lots 9 & 10 B F	Vil. of Kerwood.
581	Beeton, George sr.	do	5 { Sub lot 3 B B { sub lot 3, 16 B D	do
267	Conkey, Robert	do	1 E half 1	
279	Conkey, John	do	1 W half 4	
269	Crocker, William	do	1 W half 3	
274	Conkey, Thomas	do	1 W quarter 6	
275	Conkey, William jr.	do	1 E half 6	
277	Carthy, Cornelius	do	1 E half 7	
285	Cleford, Charles	do	1 N part 10	
345	Chambers, James	do	2 E half W half 1	
335	Chambers, John	do	2 W half E half 1	
336	Chambers, George	do	2 E quarter 1	
616	Cleverdon, Lawrence	do	2	Owner.
339	Carruthers, John	do	2 E half 4	
349	Collier, Thomas	do	2 E half W half 8	
352	Carruthers, James	do	2 9	
431	Crews, Joseph jr.	do	3 N half W half 13	
403	Chambers, Thomas jr.	do	3 E half 1	
430	Crews, Joseph	do	3 S half W half 13	
484	Cummins, Thomas	do	4 E half 6	Tenant.
493	Cline, Robert	do	4 E half 9	
488	Curry, Miles	do	4 W quarter 8	Tenant.
525	Carter, Robert	do	5 N W part 1	
530	Carroll, Thomas	do	5 W half 2	
546	Cully John	do	5 E part 7	
560	Curry, William G.	do	5 W quarter 15	
561	Curry, Thomas O.	do	5 E half W half 15	Tenant.
562	Curry, John	do	5 E half W half 15	Owner.
565	Carson, John	do	5 E quarter 15	
276	Davidson, Gavin	do	1 W half 7	
368	Dowding, William	do	2 E 1/2 7 W quarter 8	
363	Down, James	do	2 W quarter 14	
368	Down Charles	do	2 W half E half 15	
369	Down, George	do	2 E quarter 15	
404	Dowding, James	do	3 W half 2	
500	Downer, John	do	4 N part W half 13	
608	Dowding George	do	5 Mill pro'y, 1 & 2 B C	Joint owner.
407	Earley, George	do	3 E half 4	

## List of Voters for the Township of Adelaide, Division No. 2.

No. on Assessment Roll.	NAME.	Concession	No. of Lot or Part Lot.	Other Description.
410	Earley, James.....	S E R 3	W half 6, .....	
411	Earley, Samuel.....	do	3 E half 6.....	
412	Earley, George F.....	do	3 W half 7.....	
421	Eakins, John.....	do	3 W quarter 11.....	
492	Eastman, Elijah.....	do	3 W quarter 11.....	
499	Earley, William H.....	do	4 W $\frac{1}{4}$ 10, E $\frac{1}{2}$ W $\frac{1}{2}$ 10.	Tenant.
618	Earley, James sr.....	do	4 E half W half 10.....	Owner.
502	Evoy, James.....	do	4 E half N half 13.....	
532	Earley, John J.....	do	5 W half 3.....	
538	Ellis, Thomas.....	do	5 E part 5.....	
557	Evoy, George.....	do	5 N E part 13.....	
556	Evoy, Thomas.....	do	5 E part 13.....	
558	Evoy Richard.....	do	5 N W $\frac{1}{4}$ 14, E half 12.	
292	Forsyth, Robert M.....	do	1 Centre part 11.....	
304	Forsyth, Robert sr.....	do	1 E part 11.....	
584	Foster, Samuel.....	do	5 Sub lots in B E pt 1,2	Vil of Kerwood.
619	Foster, Charles.....	do	5 Part W half 7.....	Tenant.
582	Ford, Henry G.....	do	5 } Lot 1 in B B.....	Vil. o Kerwood.
545	Freer, William.....	do	5 } Part 2 in B E.....	
			W part E part 7.....	
282	Galloway, William T.....	do	1 E half 9.....	
344	Galbraith, James sr.....	do	2 W half E half 6.....	
345	Galbraith, James jr.....	do	2 E quarter 6.....	
483	Galbraith, Robert.....	do	4 E half 5, W half 6.....	
489	Galbraith, Joseph.....	do	4 E half 8 W $\frac{1}{4}$ 9.....	
601	Gosden, Wm.....	do	4 E half 8 W $\frac{1}{4}$ 9.....	
602	Gosden, John.....	do	5 } 14 lots on E C 9.....	Vil. of Kerwood.
			( on B H, 2 on B B	
265	Hawkin, George.....	do	1 E half W quarter 1.....	
266	Hawkin, Joseph.....	do	1 W half E quarter 1.....	
301	Holmes, O'Calagha.....	do	1 E half 14.....	
337	Hodgson, George L.....	do	2 Part 2.....	Tenant.
353	Humphries, William.....	do	2&3 W $\frac{1}{2}$ 10 W $\frac{1}{4}$ 10.....	
354	Harris, Samuel.....	do	2 E half W half 10.....	
218	Hodgson, John.....	do	3 E half 7.....	Owner.
414	Hanna, John.....	do	3 W half 8.....	
419	Humphries, Henry.....	do	3 E half W half 10.....	
426	Harris, David.....	do	3 N part E half 12.....	
428	Harris, Paul.....	do	3 N part S half 12.....	Tenant.
429	Harris, Thomas.....	do	3 S part 12.....	
434	Hawe, A J.....	do	3 E quarter 14.....	Owner.
495	Harris, Thomas P.....	do	4 E half 10.....	
501	Harris, William.....	do	4 Centre part 12.....	
539	Hull, George S.....	do	5 W part 6.....	
610	Harris, Isaac.....	do	5 } Lot 5 and S half 4	Vil. of Kerwood.
578	Hart, John.....	do	5 } 14 N half 15, B B,	
			Lot 1 B F.....	do
356	James, Thomas P.....	do	2 W half 11.....	
350	Johnson, Archibald sr.....	do	2 W quarter 13.....	
361	Johnson, Archibald jr.....	do	2 E half W half 13.....	
492	Jarriott, James.....	do	3 N W quarter 1.....	

Description.

No. on Assessment Roll.	NAME.	Concession	No. of Lot or Part Lot.	Other Description.
481	Jones, Appleton.....	S E R 4	E quarter 4.....	Tenant.
482	Johnston, John B.....	do	4 W half 5, .....	
535	Jury, David.....	do	5 E part 4.....	
541	Jarvis, Thomas.....	do	5 N E part 6.....	
555	Jury, Jonas.....	do	5 W half 13.....	
273	Kerswell, Giles.....	do	1 5.....	
297	Kennedy, John Rev.....	N E R 1	S part W half 12....	
364	Knight, Henry.....	S E R 2	{ E half W half 14 W half E half 13..	
409	Kincade, Angus.....	do	3 E part 5.....	
413	Kincade, James.....	do	3 E half 7.....	Tenant.
286	Large, James.....	do	1 W part 10.....	
268	Marshall, James.....	do	1 2.....	
272	McChesney, David.....	do	1 E half 4.....	
283	Morse, William.....	{ N E R 1 S E R 1	{ E part N part 9.. N W corner 10....	
338	Mathews, William.....	do	2 W half 4.....	
355	Martin, Charles.....	do	2 E half 10.....	
417	Martin, William.....	do	3 W half 9.....	
436	McNicce, James.....	do	3 S half N half 15.....	
473	Manning, David and.....	do	4 W half 1.....	Joint Tenants
474	Manning, Nicholas.....	do	4 W half 1.....	
475	Manning, William.....	do	4 E half 1.....	
480	Maher, Michael.....	do	4 E half 3.....	
487	Mitchell, John.....	do	4 W half 7.....	
486	Morgan, George W.....	do	4 E half 7.....	
490	Morgan, Samuel P.....	do	4 E half W half 9.....	Tenant.
491	Morgan, Richard.....	do	4 E half W half 9.....	Owner.
496	Morgan, William P.....	do	4 W half 11.....	
498	Murlock, William.....	do	4 S half 12.....	
528	McKinney, Bernard.....	do	5 W part E part 1.....	
529	McKinney, Terrance.....	do	5 E part 1.....	
585	McKenzie, John J.....	do	5 Centre part E half 6	
513	Mitchell, Robert.....	do	5 N W part 7.....	
517	Morgan, Robert.....	do	5 W half 8.....	
519	Morgan, John jr.....	do	5 W half 9.....	
551	Morgan, John W.....	do	5 E half 10.....	Tenant.
552	Morgan, John sr.....	do	5 E half 10.....	Owner.
559	Mann, Mark.....	do	5 E half 14.....	
476	Newton, William and.....	do	4 E half 2.....	Joint owners.
477	Newton, Richard.....	do	4 E half 2.....	
595	Norris, Joseph.....	do	5 { Lots 7, 8, 9, 12, 13 { B B part 1 B E....	Vil. of Kerwood.
295	Preston, Anthony.....	do	1 Sub lots on 11.....	Vil. of Adelaide. Owner.
359	Petch, James.....	do	2 E half 12.....	
303	Petch, Francis.....	do	1 E half 15 and 12.....	
358	Petch, Thomas.....	do	2 W half 12.....	
503	Parker, George jr.....	do	4 W half 14.....	
505	Patterson, Thomas.....	do	4 W half 15.....	
506	Parker, James.....	do	4 E half 15.....	

erwood.

erwood.

erwood.

road.

## List of Voters for the Township of Adelaide, Division No. 2.

No. or Assessment Toll.	NAME.	Concession	No. of Lot or Part Lot	Other Description.
531	Peacock, Robert.....	S E R	5 E half 2.....	
553	Patterson, Sannel.....	do	5 W half 11.....	
291	Raisen, Charles.....	do	1 W part 11.....	
366	Robinson, Henry.....	do	2 E half W half 15.....	Tenant.
667	Robison, Thomas.....	do	2 E half W half 15.....	Owner.
401	Rivers, Henry.....	do	3 S W quarter 1.....	
408	Redmond, William.....	do	3 W part 5.....	
425	Rogers, Alfred.....	do	3 N part W half 12.....	
504	Rapley, David.....	do	4 E half 14.....	
533	Richardson, John.....	do	5 E half 3.....	
534	Richardson, William H.....	do	5 W part 4.....	
537	Richardson, William.....	{	do 5 { Centre part 4.....	
			do 5 { Centre part 5.....	
589	Richardson, Benjamin.....	do	5 { Lot 4 and part 5 B E and 4 B J.....	Vil. of Kerwood.
588	Richardson, Lewis.....	do	5 { Lots 17, 18, B E and part E half 5.....	Vil of Kerwood.
614	Reid, George.....	do	5 Centre part E half 6.....	
606	Richardson, James.....	do	5 { Lots 5, 6, 7, 8 B G W part 7.....	Vil. of Kerwood.
554	Rapley, Charles.....	do	5 E half 11.....	
281	Still, Armstrong.....	do	1 W half 9.....	
289	Saul, Richard R.....	{	do 1 N W part E half 10.....	
406	Sullivan, J. hn.....	{ N E R	1 N part 10.....	
432	Smith, William.....	do	3 E half 3.....	
		do	3 E half 13.....	
609	Schryer, Henry.....	do	5 { Lots 1 and 2 B G Lots 16, 17, 18 B B.....	Vil. of Kerwood.
563	Still, Claudias.....	do	5 W half E half 15.....	Tenant.
564	Still, Charles Jasper.....	do	5 W half E half 15.....	Owner.
342	Thomas, William.....	do	2 E half 5.....	
346	Thomas, James.....	do	2 W part 7.....	
347	Thomas, Robert.....	do	2 Centre part 7.....	
357	Thrower, Isaac.....	do	2 E half 11.....	
429	Thrower, David.....	do	3 E half 10.....	
478	Tyler, John.....	do	4 W half 3.....	Owner.
548	Torrence, James.....	do	5 E half 8.....	Tenant.
278	Upton, John.....	do	1 W part 8.....	Tenant.
279	Upton, Edward.....	do	1 W part 8.....	Owner.
280	Upton, Robert.....	do	1 E quarter 8.....	
270	Wiley, Nathaniel.....	do	1 W half E half 3.....	
271	Wiley, John sr.....	do	1 E quarter 3.....	
334	Wakefield, James.....	do	2 E half W half 2.....	
433	Wiley, Joseph.....	do	3 W half 14.....	
435	Watson, John W.....	do	3 N quarter 15.....	
536	Wright, Edwin.....	do	5 W part 5.....	
593	Whiting, John.....	do	5 { Lots 6, 7, 9, 10, 11, 12, 13, E 2.....	Vil. of Kerwood.



SUB-DIVISION NO. 3.

No. on Assessment Roll.	NAME.	Conces'ion	No of Lot or Part Lot.	Other Description.
162	Ayer, Robert.....	N E R 2	W quarter 19.....	
166	Anderson, James jr.....	do	2 E half 21.....	Owner.
241	Anderson, James.....	do	2 W half 22.....	Tenant.
242	Armstrong, Wm.....	N&S E R 1	E half 22.....	
264	Adams, John.....	N E R 1	E and centre part 31	
379	Alexander, Joseph.....	S E R 2	E half 19.....	
438	Alexander, Thomas.....	do	3 W half 16.....	
576	Armstrong, Wm. H.....	do	5 19.....	
102	Brown, David.....	N E R 3	S E quarter 18.....	
109	Brown, William E.....	do	3 N E part 40.....	
106	Bolton, Charles.....	do	3 S half N half 19.....	
115	Bunting, Wesley.....	do	3 E half 24.....	
163	Botton, Samuel.....	do	2 E half 19.....	
164	Bolton, William.....	do	2 20.....	
167	Bolton, James.....	do	2 W half 22.....	
234	Broek, William.....	do	1 W half 18.....	
257	Bishop, David.....	do	1 W half 28.....	
259	Bishop, William.....	do	1 W half 29.....	
373	Bishop, George jr.....	S E R 2	W half 17.....	Tenant.
380	Bell, John C.....	do	2 W part 20.....	
381	Bell, Osborne.....	do	2 E part 20.....	
607	Black, John.....	do	2 24.....	Owner.
393	Bogue, Thomas.....	do	2 W part 25.....	
395	Buttery, George.....	do	2 W part 26.....	
396	Buttery, William.....	do	2 W pt 27, E pt 26.....	
397	Buttery, Joseph.....	do	2 E part 27.....	
447	Burden, Wm. R.....	do	3 N half 21.....	
468	Bogue James.....	do	3 N W part 23.....	
520	Burnett, George D.....	do	4 S pt of W pt 19.....	
252	Cooper, Willam.....	N E R 1	E half W half 26.....	
307	Campbell, William.....	S E R 1	E half 17.....	
331	Carrol, Henry.....	do	1 E part 31.....	
389	Campbell, Duncan A.....	do	2 W 1/2 27 & W pt 23.....	
439	Campbell, Duncan.....	do	3 E half 16.....	
461	Campbell, Donald D.....	do	3 W part 19.....	
451	Crouse, Nelson.....	do	3 S W part 21.....	
509	Campbell, Duncan D.....	do	4 W half 17.....	
510	Carnighan, Adam.....	do	4 S W part E half 17.....	
115	Demery, William.....	N E R 3	W part 23.....	
169	Demery, Simon.....	do	2 W part 23.....	
254	Demery, Aaron.....	do	1 S W part 27.....	
255	Demery, Charles.....	do	1 N part 27.....	
260	Dorham, William.....	do	1 E half 29.....	
326	Demery, Benjamin V.....	S E R 1	N part 28.....	
352	Dell, Wm. H.....	do	2 S part 21.....	
393	Dell, Adam.....	do	2 S part 21.....	
384	Dell, Basnett.....	do	2 N end 21.....	
385	Dell, Robert jr.....	do	2 N W quarter 22.....	

No. on Assessment Roll.	NAME.	Conces'ion	No. of Lot or Part Lo <sup>s</sup> .	Other Description.
588	Donglass, John.....	S R R	2 E half 22.....	
454	Donaldson, George.....	do	3 Centre pt 4 1/2 22....	
459	Doll, Adoram.....	do	3 S E part 23.....	
171	Elliott, George.....	N E R	2 N W part 24.....	
104	Featherstone, Robert.....	do	3 N E half S half 18	
313	Fearnley, George.....	S E R	1 S third 21.....	Tenant.
390	Frank, James G.....	do	2 E Centre part 23....	Owner.
391	Frank, Robert R.....	do	2 E half W half 23....	
446	Frank, Hiram G jr.....	do	2 E half 20.....	Owner.
458	Frank, George A.....	do	3 W half E half 22....	Tenant.
466	Frank, Charles G.....	do	3 E half 22.....	do
467	Frank, Hiram G. sr.....	do	3 Part W quarter 23..	
2	Giffin, William jr.....	N E R	3 W part 22.....	
168	Graham, John.....	do	2 E half 22.....	
246	Gunsen, Henry.....	do	1 E quarter 23.....	
318	Gear, George sr.....	S E R	1 E quarter 24.....	Tenant.
319	Giffin, Wilham sr.....	do	1 W part 25.....	Owner.
325	Glenn, Walter.....	do	1 E half 27.....	
409	Gear, George jr.....	do	2 E quarter 25.....	Tenant.
114	Heake, Andrew.....	N E R	3 E part 23.....	
175	Harkness, James B.....	do	2 E half 25.....	Tenant.
176	Harkness, Alexander.....	do	2 E half 25.....	Owner.
239	Hickey, Thomas.....	do	1 S W part 21.....	
243	Harborn, William jr.....	do	1 W half 23.....	Tenant.
244	Harborn, William sr.....	do	1 W half 23.....	Owner.
321	Harten, John.....	S E R	1 W quarter 26.....	
375	Harris, Joseph.....	do	2 W half 18.....	
399	Hansford, Philip G.....	do	2 N part 28.....	
518	Hanson, David.....	do	1 S part 28.....	
522	Holden, Moses.....	do	4 S part W half 19....	
523	Holden, James.....	do	4 S E part 19.....	
523	Holden, James.....	do	4 E part 19.....	
323	Ireland, William.....	S E R	1 W half 27.....	
165	Jones, James.....	N E R	2 W half 21.....	
172	Jaynes Charles.....	do	2 N E quarter 21....	
237	Johnson, Donald.....	do	1 E half 20.....	
238	Johnstone, John.....	S E R	1 E quarter 24.....	
320	Jamieson, James.....	do	1 E quarter 25.....	
525	Jones, Philip.....	do	5 W half 18.....	
513	Kearnes, Bryan.....	do	4 S E part 18.....	
117	Linton, Wm.....	N E R	3 Gore 26.....	
245	Lewis, John jr.....	do	1 W half E half 23....	
247	Lewis, William B.....	do	1 W half 24.....	
317	Lewis, John sr.....	S E R	1 Centre part 24.....	
445	Lynn, Thomas.....	do	3 W half 20.....	
328	Lyman, John.....	do	1 N E part 20.....	
574	Lothian, Richard.....	do	5 W half 17.....	

List of Voters for the Township of Adelaide, Division No. 3.

No. on Assessment Roll.	NAME.	Concession	No. of Lot or Part Lot.	Other Description.
108	Meek, Thomas A.....	N E R	3 N E part 19 .....	
107	McChesney, Hugh.....	do	3 S E quarter 20.....	
56	McKeen, William.....	do	3 E half 22 .....	
177	Murray, George.....	do	2 W quarter 26 .....	
178	Murray, Robert.....	do	2 E half W half 26...	
179	McDonald, Angus.....	do	2 E half 26.....	
249	Mahon, William.....	N E R	1 S W part 25.....	
250	Mahon, John.....	do	1 W centre part 25....	
306	Munroe, Alexander .....	do	1 E half W half 17....	
311	Mathews, George.....	S E R	1 N W one-third 21. . .	
312	McKenzie, James .....	do	1 N E one-third 21.....	
314	Mathews, Charles.....	do	1 S one-third 21.....	Owner.
315	McIntyre, David.....	do	1 W half 23.....	
370	Miner, Reuben.....	do	2 W quarter 16.....	
371	Miner, William.....	do	2 E half W half 16....	
372	Miner, George.....	do	2 E half 16.....	
441	Morrow, Edwin.....	do	3 N part 18.....	
442	Morrow, Andrew.....	do	3 S E part N half 18. . .	
443	McNeil, John.....	do	3 S half 18.....	
448	McLean, Robert.....	do	3 S part N part 21....	
452	McPherson, Hugh.....	do	3 S W part 21.....	
456	Marshall, James.....	do	3 S W part 22.....	
457	McPherson, John .....	do	3 S W part 22.....	
519	Mann, George.....	do	3 N E part 19.....	
511	Mitchell, Samuel.....	do	4 Part of E half 17....	
571	Mann, Thomas.....	do	5 S E half 18 .....	
111	Nettleton, William.....	N E R	3 E part 21 .....	
170	Neil, William.....	do	2 E part 23 .....	
248	Newell, Alexander. . . . .	do	1 E half 24.....	
308	Nichol, Edward.....	S E R	1 N half 18 .....	
512	Nell, Thomas.....	do	4 W half 18.....	
251	O'Neil, Denis.....	N E R	1 E half 25.....	
110	Pealden, Joseph.....	do	3 W half 21.....	
194	Parke, Edward.....	do	2 S parts 28 and 29....	Owner.
310	Peacock, William.....	do	1 20 .....	
371	Paine, Thomas.....	S E R	2 E half 18.....	
378	Paine, John E.....	do	2 E half W half 19....	
453	Pannell, William .....	do	3 E part W half 22....	
507	Parker, George sr.....	do	4 W half 16.....	
568	Parker, Robert.....	do	5 E part 16 .....	
569	Parker, Charles N. . . . .	do	5 E half W half 16....	
103	Roebtham, James.....	N E R	3 W half 18 .....	
181	Roebtham William.....	do	2 E half 18.....	
174	Reid, William.....	do	2 N W quarter 25 .. .	
324	Ross, John.....	S E R	1 E half 27.....	
329	Rutherford, Alexander.....	do	1 Gore 30.....	
398	Robbins, Edwin.....	do	2 S part 23.....	
521	Raisen, Johnstono.....	do	4 S W part of E h'f 19	
565	Rowe, Trustram.....	do	5 N part W half 16....	
105	Scott, James.....	N E R	3 N W ¼ N half 19.....	

No. on Assessment Roll.	NAME.	Conces'ion	No of Lot or Part Lot.	Other Description.
160	Scott, Robert.....	N E R	2 W half 18.....	
173	Spring, Isaac.....	do	2 S E part 24.....	
180	Smith, John.....	do	2 N half 27.....	
181	Smith, Malcolm.....	do	2 S half 27.....	
253	Smith, John.....	do	1 E half 26.....	
305	Shenan, William.....	do	1 W quarter 17.....	
316	Slater, Thomas.....	do	1 W $\frac{1}{4}$ 24 & E half 23..	
322	Sutton, John.....	do	1 N E part 26.....	
440	Scoon, William A.....	do	3 E half 17.....	
449	Smith, Lewis.....	do	3 S E part 21.....	
463	Sickles, Henry.....	do	3 { Sub lots 3 and 4.... } Head S on 23.....	
567	Shepherd, John.....	do	5 S part of W half 16.	
570	Shepherd, James.....	do	5 Centre part E half 16	
183	Tomilson, William jr.....	N E R	2 E part 28.....	Tenant.
261	Tomilson, William sr.....	do	1 S W part 30.....	
262	Tomilson, Thomas.....	do	1 N part 30.....	
263	Tueky, Charles.....	do	1 E part 30 W part 31	
309	Thompson, David M.....	S E R	1 All 19 and 16.....	H
400	Thompson, Malcolm M.....	do	2 S part 29.....	
450	Thompson, George.....	do	3 Sub lots 4 & 5 on 21.	
470	Thompson, Robert.....	do	3 24.....	
469	Thompson, Andrew.....	do	3 Saw mill on 24.....	
471	Thompson, John R.....	{	do 2 E quarter 23.....	
		do	do 3 25.....	
508	Thompson, James.....	do	4 E half 16.....	
514	Thomas, David.....	do	4 N E part 18.....	
516	Thompson, Thomas.....	do	4 N W part 19.....	
57	Wilson, John.....	N E R	4 Gore 18.....	
116	Wardell, Joseph.....	do	3 Gore 25.....	
182	Wood, William.....	do	2 Gore 39 N part 28..	Tenant.
235	Walker, Robert.....	do	1 E half 18.....	
236	Walker, James.....	do	1 19.....	
240	Walsh, John.....	do	1 S E part 21.....	
256	Warner, William.....	do	1 S E part 27.....	
258	Whiting, David.....	do	1 E half 28.....	
33C	Walters, William.....	S E R	1 W part 31.....	
374	Waltham John.....	do	2 E half 17,..	
392	Warren Henry.....	do	2 24.....	Tenant.
573	Ward George.....	do	5 W pt 18 & E half 17	
572	Wray, William.....	do	5 N part W pt 18....	

I, Anthony Preston, Clerk of the Township of Adelaide, do hereby certify that the above list contains a correct copy of all persons appearing on the Assessment Roll of the Township of Adelaide for the current year, entitled to vote at elections for Members of the Dominion Parliament and the Legislative Assembly of Ontario; and that a copy of such list was first posted up in the Clerk's Office, on the Twenty-eighth day of June inst. All parties interested are hereby notified to examine the said list, and if any omissions or other errors are perceived therein, to take steps within Thirty days to have the same corrected.

ANTHONY PRESTON,  
Township Clerk.

Adelaide, June 28th, 1876.



