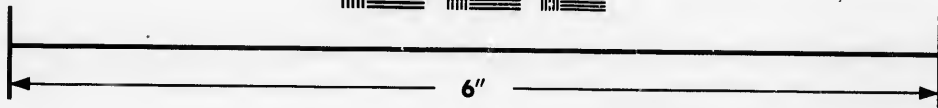
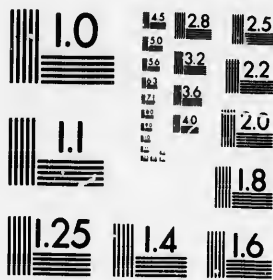
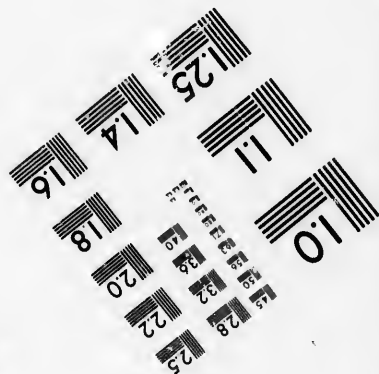


**IMAGE EVALUATION  
TEST TARGET (MT-3)**



Canada



**Photographic  
Sciences  
Corporation**

23 WEST MAIN STREET  
WEBSTER, N.Y. 14580  
(716) 872-4503

**CIHM/ICMH  
Microfiche  
Series.**

**CIHM/ICMH  
Collection de  
microfiches.**



Canadian Institute for Historical Microreproductions / Institut canadien de microreproductions historiques

**© 1986**

Technical and Bibliographic Notes/Notes techniques et bibliographiques

The Institute has attempted to obtain the best original copy available for filming. Features of this copy which may be bibliographically unique, which may alter any of the images in the reproduction, or which may significantly change the usual method of filming, are checked below.

L'Institut a microfilmé le meilleur exemplaire qu'il lui a été possible de se procurer. Les détails de cet exemplaire qui sont peut-être uniques du point de vue bibliographique, qui peuvent modifier une image reproduite, ou qui peuvent exiger une modification dans la méthode normale de filmage sont indiqués ci-dessous.

- Coloured covers/  
Couverture de couleur
- Covers damaged/  
Couverture endommagée
- Covers restored and/or laminated/  
Couverture restaurée et/ou pelliculée
- Cover title missing/  
Le titre de couverture manque
- Coloured maps/  
Cartes géographiques en couleur
- Coloured ink (i.e. other than blue or black)/  
Encre de couleur (i.e. autre que bleue ou noire)
- Coloured plates and/or illustrations/  
Planches et/ou illustrations en couleur
- Bound with other material/  
Relié avec d'autres documents
- Tight binding may cause shadows or distortion along interior margin/  
La reliure serrée peut causer de l'ombre ou de la distorsion le long de la marge intérieure
- Blank leaves added during restoration may appear within the text. Whenever possible, these have been omitted from filming/  
Il se peut que certaines pages blanches ajoutées lors d'une restauration apparaissent dans le texte, mais, lorsque cela était possible, ces pages n'ont pas été filmées.

- Coloured pages/  
Pages de couleur
- Pages damaged/  
Pages endommagées
- Pages restored and/or laminated/  
Pages restaurées et/ou pelliculées
- Pages discoloured, stained or foxed/  
Pages décolorées, tachetées ou piquées
- Pages detached/  
Pages détachées
- Showthrough/  
Transparence
- Quality of print varies/  
Qualité inégale de l'impression
- Includes supplementary material/  
Comprend du matériel supplémentaire
- Only edition available/  
Seule édition disponible
- Pages wholly or partially obscured by errata slips, tissues, etc., have been refilmed to ensure the best possible image/  
Les pages totalement ou partiellement obscurcies par un feuillet d'errata, une pelure, etc., ont été filmées à nouveau de façon à obtenir la meilleure image possible.

Additional comments:  
Commentaires supplémentaires:

[Printed ephemera] [3]p. This copy is a photoreproduction.

This item is filmed at the reduction ratio checked below/  
Ce document est filmé au taux de réduction indiqué ci-dessous.

10X	12X	14X	16X	18X	20X	22X	24X	26X	28X	30X	32X
									/		

The copy filmed here has been reproduced thanks to the generosity of:

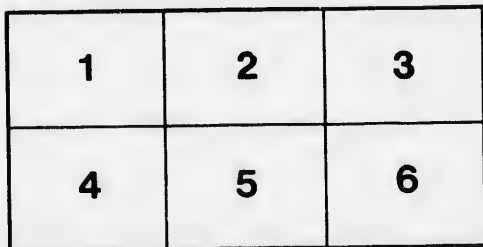
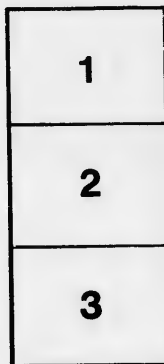
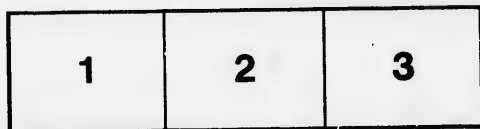
Bibliothèque nationale du Québec

The images appearing here are the best quality possible considering the condition and legibility of the original copy and in keeping with the filming contract specifications.

Original copies in printed paper covers are filmed beginning with the front cover and ending on the last page with a printed or illustrated impression, or the back cover when appropriate. All other original copies are filmed beginning on the first page with a printed or illustrated impression, and ending on the last page with a printed or illustrated impression.

The last recorded frame on each microfiche shall contain the symbol  $\rightarrow$  (meaning "CONTINUED"), or the symbol  $\nabla$  (meaning "END"), whichever applies.

Maps, plates, charts, etc., may be filmed at different reduction ratios. Those too large to be entirely included in one exposure are filmed beginning in the upper left hand corner, left to right and top to bottom, as many frames as required. The following diagrams illustrate the method:



L'exemplaire filmé fut reproduit grâce à la générosité de:

Bibliothèque nationale du Québec

Les images suivantes ont été reproduites avec le plus grand soin, compte tenu de la condition et de la netteté de l'exemplaire filmé, et en conformité avec les conditions du contrat de filmage.

Les exemplaires originaux dont la couverture en papier est imprimée sont filmés en commençant par le premier plat et en terminant soit par la dernière page qui comporte une empreinte d'impression ou d'illustration, soit par le second plat, selon le cas. Tous les autres exemplaires originaux sont filmés en commençant par la première page qui comporte une empreinte d'impression ou d'illustration et en terminant par la dernière page qui comporte une telle empreinte.

Un des symboles suivants apparaîtra sur la dernière image de chaque microfiche, selon le cas: le symbole  $\rightarrow$  signifie "A SUIVRE", le symbole  $\nabla$  signifie "FIN".

Les cartes, planches, tableaux, etc., peuvent être filmés à des taux de réduction différents. Lorsque le document est trop grand pour être reproduit en un seul cliché, il est filmé à partir de l'angle supérieur gauche, de gauche à droite, et de haut en bas, en prenant le nombre d'images nécessaire. Les diagrammes suivants illustrent la méthode.

SIRS,

**D**URING the Winter Months this Market seldom offers any brisk demand for Imported Goods; the chief Sales, more particularly in West India Produce, being effected, before the close of the communication by water with the interior; Sales, however, this Season, have been and continue unusually dull. Since our last advice no material change has taken place, our quotations in consequence do not much vary from the prices then stated; but, so little is doing, that the present may be considered merely nominal.

We have already noticed that the quantity of RUMS imported last Season, exceeded that of any year antecedent; better prices, also, have in general been obtained, than under such heavy supplies could reasonably have been expected—and the consumption such, that the stocks now remaining in first hands in Quebec, do not together amount to one hundred Tuncheons; yet, the quantity on sale, appears fully to meet the present demand.—The failure of our Wheat Crop, and the scarcity of Cash, incline us to think that the Sales of Rum in this Country during the ensuing Season, will not equal that of the past year, as to Potatoes, and we fear prices may prove less favorable; this opinion we ground upon former experience.

No demand at present for MUSCO SUGARS, or for COFFEE; Sales of the latter are always very limited, except when at low prices. OF MADEIRA and all other WINES (Spanish Red excepted) the Import of last Season fell short of that for 1809, yet the demand has been very inconsiderable, and a great proportion of what was received remains still in the Market; a parcel of about 20 pipes Madeira, of good quality, was lately sold by Auction at the miserable rate of £10 to £30 Currency per Pipe, and of these 3 or 4 Casks only exceeded £45.

We regret not to have any thing more favorable to add on the subject of WHEAT and FLOUR, than communicated by our former advices—nor can we yet presume to say to what extent our supplies may prove from Upper Canada, where they had fortunately an abundant harvest; or, whether through their means we may be enabled to spare any Flour for exportation; we in consequence consider it to be our duty to state to our Correspondents, the opinion we hold, that it would prove very hazardous to trust to Quebec for their supplies either of Wheat, Flour or Biscuit, for the ensuing Season.

OF SALTED PROVISIONS we shall have great plenty. Dry and Pickled FISH are generally to be procured here, but when Shipments are desired of these Articles, it would be advantageous to the interested that orders should be given for the purchase six or eight weeks before the intended time of Shipment, which from our local situation, becomes necessary, fully to meet the views of our West India friends, by allowing time to procure from the Out Posts what could not readily be had in Quebec.

There is very little at present doing in the POTASH Market; a few lots occasionally are taken off our quotations: there are now about 5,500 Barrels in the Inspection Stores at Montreal.

Contracts have been made for OAK and PINE TIMBER, to be delivered at Quebec in July and August next, the former at 1s. 6d. a 1s. 8d. per Cubic Foot, the latter at 6d. for White, and 1s. a 1s. 1d. per cubic foot for Red—but we have not heard of any agreement being entered into for STAVES.—On Lumber Contracts heavy advances are always required, of course much risk and frequent loss attend them.

We take the liberty to remark that all Letters intended for Canada, and forwarded through the Unit. J. States, (those only excepted which come in the regular Mails by the Packets) must be put under cover to some Correspondent there, as the inland postage to the frontiers must be paid, otherwise such Letters would not be sent on.

We pray your reference to the annexed Prices Current and List of Duties, also to the subjoined Statement of the Imports and Exports for the years 1808, 9 and 10, by the River St. Lawrence, the former are confined to such Goods only as pay Duty, no account being taken at the Custom House of those entered free.—We give also a list of the chief Imports to this Province from the U. S. by the inland communication via St. Johns, for the same years.

We beg leave to renew our tender of best services to you and your friends, as well in behalf of our Establishment at Montreal, under the firm of IRVINE, LESLIE & Co. as of

SIRS,

Your most obedient, and

Very humble Servants,

IRVINE, MACNAUGHT & Co.

PRICES CURRENT.—EXPORTS.

		from	to			from	to
ASHES...1st Pot,	at Montreal, per Cwt.	30s.		LUMBER—			
1st Pearls,			32s.	W. Oak Timber,	none at present for sale.		
GRAIN...viz.				W. Pine, do.		7d.	9d.
Wheat,	scarce per Bus.	10s. 6d.	11s.	R. do.	none at present for sale.		
Barley,	none.			Pine Plank, 2 a 3 inches		4d.	6d.
Pease,		5s.	7s. 6d.	Pine Boards, 10 feet long		80s.	85s.
Indian Corn,	none.			Pipe Staves, none selling,	per M.		
Oats,			8s. 6d.	4s.	Note.—The Standard Pipe Staves, as fixed by Law,		
FLOUR...Superfine, p Pbl.	None at present for sale.				is 5½ feet long,		
Fine, do.					5 inches broad, and		
Common, do.					1½ inches thick, at the thinnest part.		
BISCUIT...Newfoundland, per Cwt.	none.				On all thicker Pipe Staves 1-5 of the Price of the Standard is allowed for every ¼ inch of greater thickness.		
Navy, do.					Pipe Staves of 1 inch thick, are reckoned at one half price of Standard.		
Fine Water Biscuit, do.		70s.			The Hoghead Stave, is 4½ feet long.		
PORK—Prime,	per Bbl.	95s.	100s.		4½ inches broad and valued at 2-3ds. the price of Pipe of corresponding thickness.		
BEEF—Prime,	do.	65s.	70s.		The price fixed by Law for the 4½ ft. Stave, being thought by the Traders to be underrated, few or none of this description are prepared except by special Contract and then at same price or nearly so of the Standard.		
BUTTER,	per lb.	1s. a 1s. 1d.			The Puncheon Stave,		
HOGSLARD,	do.	1s. 3d.			3½ feet long,		
FISH—Dry and Pickled,	none at Market.				4 inches broad—valued at half the price of corresponding thickness—and Puncheon Heading 2½ feet long, 5½ inches broad, same price.		
SOAP—Yellow,	per lb.	7½d.			Puncheon Staves, 3½ feet long, dressed for the West?	£ 12	p. M.
CANDLES—Mould,	do.	1s. 3d.			India Market,		
Dipped,	do.	1s. 1d.			Puncheon Packs, for dn. new	18s.	
Essence of Spruce,	do.	1s. 1d.			Pipe Packs, made up for the Madeira Market	25s.	
Ditto,	per Box, containing 12 Pots.	17s. 6d.			Half and Quarter do.	12s. 6d.	6s. 6d.
					Ash Hoops, 12 feet long, per 1000	110s.	
					14 feet long	126s.	

EXCHANGE.

£100 Sterling, at par equal to £111 1-9 Currency.

Current rate—Government Bills at 30 days sight, 5 per Cent discount.

Merchants do. at 60 days sight on London, 7 to 7½ per Cent discount—When Bills are forced upon the Market, Cash, from the present scarcity, cannot be had except at much greater discount than these quotations.

PRICES CURRENT—IMPORTS.

		from	to	REMARKS	AND	DUTIES.
		6s. 6d.	7s. 6d.			Sterl.
		5s. 9d.	6s. 6d.			Cy.
RUMS, O. P. Jamaica, per Gall.	do.	7s. 6d.	7s. 6d.	Rum from any part of the United-Kingdom, - - - per gall.		6d.
W. I.	do.	5s. 9d.	6s. 6d.	Do. from the British West India Islands - - - - -		6d.
				Note. The 6d. merq. on the latter may be saved by the return cargo.		
				Sec. Act 28, Geo. III. Ch. 39.		
				Do. from any other of His Majesty's Colonies - - - - -	9d. &	6d.
Foreign BRANDIES none at Market—per Gall.				On British and Irish Spirits, imported direct - - - - -	9d. &	6d.
GENEVA,		12s. 6d.	15s.		1s. &	6d.
MELASSES, none:					1s. &	6d.
				Melasses, from British Plantations, and imported in vessels owned by persons residing in the United Kingdom of this Province - - - - -	4d. &	5d.
				Imported from the United Kingdom in vessels owned as above - - - - -	3d. &	5d.
				The same article imported from the British Plantations in vessels belonging to any other of His Majesty's Subj. Colonies - - - - -	7d. &	5d.
				Do. from the United Kingdom - - - - -	6d. &	5d.
COFFEE, - - - - - per lb.		1s. 3d.		Do. from British Plantations - - - - - per Cwt.	7s. &	per lb. 2d.
				Do. imported in British vessels from foreign Plantations, - - - - - per Cwt.	59s. 9d. &	per lb. 2d.
PIMENTO, in very little demand, - - - do.		1s. 6d.				
MUSCOVADO Sugars - - - per cwt.		70s.	72s. 6d.			
REFINED, do. - - - per lb.		10d.	1s. 3d.			
WINES, Madeira - - - per pipe		£55.	£70.	Imported direct from the United Kingdom - - - - - per Ton	£7 &	per gal. 9d.
Teneriffe, - - - do.		£30.	£45.	do. do. from the United Kingdom - - - - -	£7 &	per gal. 6d.
Fayal, none at Market.				do. do. from Great Britain or Ireland - - - - - per Ton	10s. &	per gal. 6d.
PORT, - - - - - per pipe		£50.	£70.	* N. B. Madeira, Teneriffe and Fayal Wines when imported from Great Britain or Ireland pay only 1s. 6d. per Ton & the Provincial duties as above are respectively saved		
SPANISH, red Wines, - - - do.		£25.	£30.			
SALT, Lishon, - - - per minot		2s. 9d.	3s.	No demand - - - - - per Minot		4d.
Liverpool, fine, - - - do.		2s. 6d.		Several parcels have lately been offered by public sale, but no purchasers - - - do.		4d.
TOBACCO, none at Market.				Tobacco imported from the United Kingdom, - - - per lb.	1d. &	2d.
				And from any of the Colonies - - - - - per lb.		2d.
				Manufactured Tobacco except Snuff pays - - - - -		3d.
				And Snuff, - - - - -		4d.
						6d.
						4d.

Goods sold by Auction pay a Duty of 2½ per cent on the gross proceeds, (Goods damaged, and sold for the benefit of the owners or Insurers, and the effects of Insolvent Debtors excepted.)  
 On all articles paying Duty by Weight or measure, under the Provincial Acts, an allowance of 3 per Cent is made to the Importer for waste and leakage—but no deduction from those paying Duty under the Acts of the Imperial Parliament.

GENERAL STATEMENT of EXPORTS from the PORT of QUEBEC during the years 1808, 1809 and 1810.

Year	Wheat	Flour	Biscuit	Ind. Corr	Barley	Flax Seed	Pease	Oats	Oak Tim.	Pine Timber	Walnut	Staves & Heading	Stave ends	Pine Board & Plks	Birch Boards	Cedar	Hard-wood	Oars	
	Bushels	Bushels	Bbls.	Cwt.	Bushels	Bush.	Bush.	Bush.	Pieces	Pieces	Pieces	Pieces	Pieces	Pieces	Pieces	Pieces	No.	No.	
1808	186708	150	42468	32587	3167	5991	13830	52934	269	12342	14500	188	1821861	62153	191976	30	7	4144	6723
1809	198221	248	19476	32917	511	3478	28090	54447	7540	10143	29399	237	3032518	27461	264280	0	0	16832	74124
1810	170860	40	12319	16167	98	16	3584	18922	865	34788	39027	137	3273027	47515	312123	0	0	13622	30391

FURS, SKINS, &c.																			
Beaver	Martin	Otters	Mink	Fisher	Fox	Bear and	Deer	Rac-	Cased and	Elk	Wolf	Wolve-	Mus-	Seal	Butta-	Badger	Lynx	Other	
						and		con-	open			rens.	quash.		lo-				
						Cub.		conn.	Cat.						Re-				
1808	136927	9539	7250	9108	3866	1038	1298	103875	123107	5718	662	18	39	6513	10	1	0	0	0
1809	103832	392	5592	4010	3048	103	561	89949	51798	5791	860	0	455	16996	91	0	167	0	0
1810	98229	554	2615	169	2536	1	10751	82551	39521	2428	54	19	317	9971	59	0	0	37	2661

**STATEMENT of GOODS IMPORTED to QUEBEC by the RIVER St. LAWRENCE in the  
Years 1808, 1809 and 1810.**

WINES					RUMS.			MELLASSES.		SUGARS.				COFFEES.				
Year	Botts	Pipes	Hhds.	Or. Cks.	Year	Pans.	Hhds.	Year	Cks.	Year	Refin.	Hhds.	Moscovado.	Year	Tierce	Bbls.	Bigs.	
Madeira	1808 15	202	39	19	1808 1	204	163	1808 1	307	1808 366	1016	114	838	1808 10	46	179	489	
	1809 8	205	86	91	1809 3	286	183	1809 3	314	1809 266	384	148	614	1809 37	217	84	64	
	1810 5	149	37	57	1810 1	676	189	1810 1	493	1810 290	938	170	1738	1810 14	83	11	11	
Port	1808 0	307	11	97	BRANDY			SALT.		TOBACCO.				Playing Cards.				
	1809 0	282	2	187	1808 0	276	37	1808 0	11797	1808 1	0	3007	106	1808 0	0	0	0	0
	1810 0	192	60	Q. cks. 0	1809 0	111	9	1809 0	18338	1809 41	30	2595	25	1809 0	0	0	0	0
Veneriffe	1808 0	567	292	50	1810 0	226	0	1810 0	81621	1810 1	0	384	0	1810 0	0	0	0	0
	1809 0	412	178	0	GENEVA					T E A S.								
	1810 0	23	21	29	1808 0	25	0	1808 0	129	1808 1	0	0	0	1808 0	0	0	0	0
Span. Red	1808 1	309	167	51	1809 0	25	0	1809 0	129	1809 41	30	2595	25	1809 0	0	0	0	0
	1810 74	1426	334	0	1810 0	25	0	1810 0	129	1810 1	0	0	0	1810 0	0	0	0	0
French	1808 0	0	0	68 cases 37	1809 0	0	0	1809 0	0	1810 0	0	0	0	1810 0	0	0	0	0
	1809 0	0	0	40	1810 0	0	0	1810 0	0	1810 0	0	0	0	1810 0	0	0	0	0
	1810 0	0	0	10	1810 0	0	0	1810 0	0	1810 0	0	0	0	1810 0	0	0	0	0

Exclusive of the foregoing, the following is a Statement of Goods, also subject to Duty, imported from the United States by the inland communication of the Port of Saint John's, during the three years aforesaid.—viz.

T E A S.												WINEs.		Coffee		Pimento.	
Year	Hyson lbs.	Hyson Skin lbs.	Singls lbs.	Souchong lbs.	Bohea lbs.	Foreign lbs.	Geneva Galls.	Run Galls.	Liqueurs Galls.	Wines Mad & Spunns Galls.	Coffee lbs.	Pimento lbs.					
1808	199554	26115	29048	7276	654	1386	0	0	0	0	0	60					
1809	4913	137633	7993	4352	738	3229	892	0	0	0	2696	1928					
1810	18482	107114	18370	6477	2910	9003	1319	929	51	983	0	1204					

TOBACCO.						SUGARS.	
Years.	Indigo lbs.	Leaf (Manf.) lbs.	Snuff lbs.	Musco lbs.	Leaf lbs.	Years.	Indigo lbs.
1808	1547	54199	15651	51	598	111	1808
1809	6616	119311	82001	68	19	4943	1809
1810	1456	218885	123711	18681	33673	21653	1810

**STATEMENT OF GOODS Imported by said PORT OF St. JOHNS FREE OF DUTY.**

Year.	Bbls. Pork.	Bbls. Beef.	lbs. Bacon.	lbs. Butter.	Head Oxen.	Numb. Horses.	Cwt. Fresh Pork.	lbs. Hogs Lard.	lbs. Sper. Cands.	lbs. Chees.	lbs. Fresh Cod Fish.	lbs. Honey.	lbs. Chocolate.	lbs. Tallow.
1808	2295	5	924	41376	224	9	3023	14919	315	33464	10213	301	1913	0
1809	5170	721	2630	86850	1022	10	3234	36175	1250	56230	36410	2130	8633	9600
1810	5517	1509	14140	85091	1477	18	10911	37016	10975	17324	26350	27129	12736	36410

Manufactured and Unwrought Leather.														
Years.	Sole leather lbs.	Men's Shoes doz Pr.	Woms. Shoes doz Pr.	Boots doz Pr.	Dress'd Calf Skins.	Dress'd Sheep Skins.	Saddles.	Bridles.	Ebbs Pot.	Ashes Pearls.	lbs. Hops.	Hat Bodice.	Reams w. Papr.	lbs. Wax.
1808	91700	388	417	19	40 doz.	5 doz.	180	10	874	467	28300	8380	160	918
1809	114768	2304	404	97	6	6 doz.	289	11	7330	1163	21750	4730	0	150
1810	112285	2192	404	165	11	6 doz.	409	11	7471	873	6950	4506	0	1650

Year.	Bbls. Tar.	Bbls. Rosin.	lbs. Bees Wax.	lbs. Pepp. & Cloves.	lbs. Cotton Wool.	Pieces Nankeens.	Cwt. Iron.	lbs. Tallow Candles.	Cwt. Soap.	Loads Square Oak.	Loads Square Pine.	M. Staves.	No. Spars.	No. Masts.	Feet Plk & Boards.	Bbls. Turp.	Tons Spirits Wood.	Feet Log Mahogany.	Bbls. Cyder.	lbs. Ginse.	Valuation of Mer. handiz Imported by St. John's not included in this Statement.
1808	112	51	168	1094	300	40	15	0	0	1971	10410	18	2086	0	22830	70	1	2210	0	0	1808 \$20,100 6 6 Currency.
1809	253	301	400	50	8778	4800	134	0	0	700	5844	186	468	20	67230	0	0	0	18	0	1809 39,054 9 9 do.
1810	445	391	1832	20203	1240	8182	247	90125	992	22640	39516	507	8095	138	40550	17	0	1550	1216	2666	1810 62,200 0 2 do.

**EXPORTS via St. JOHNS.**

Year.	Salt Bush.	F I S H			Steel lbs.	Rum Galls.	Wine Galls.	SUGARS		Iron T Cwt.	PAINTS		Salt Petre lbs.	Gun Powder lbs.	Cider Bbls.	Men's Hosiery Doz.	Tea lbs.	Pork Bbls.	Mmfd Tobacco lbs.	Pairs Shoes Doz.	Pairs Boots Doz.	Undressed Ox Hides Skins No.	Calf Skins No.	Soap lbs.	Valuation of Merchandize exported via St. John's, not included in the annexed Statement.	
		Pickled Bbls.	Tierce.	Dry Cwt.				Musc. lbs.	Loaf lbs.		White lbs.	Red lbs.														
1808	13373	964	3	108	0	308	93	1859	600	4	500	0	0	0	0	0	0	0	0	0	0	0	0	0	0	1808 \$1,273 7 0 Currency.
1809	24351	1921	0	163	0	510	0	2150	60	3	0	2800	0	0	0	0	0	0	0	0	0	0	0	0	0	1809 22,551 3 9 do.
1810	27421	1379	0	136	9091	636	106	0	68	6	1	500	0	56	1570	142	0	385	179	1056	31	2000	0	0	0	1810 97,076 10 11 do.

**FURS and SKINS via ditto Exported.**

Year	Musk No.	Rail No.	Martins No.	Mink No.	Bear No.	Recoon No.	Fox No.	Deer No.	Beaver No.	Beaver Coating lbs.	Fisher No.	Buffalo No.	Rabbit No.	Otter No.	Sled Cat No.	Wolves No.	Castoreum lbs.
1808	205672	4953	645	767	10681	400	240	21464	0	50	24	1008	8000	0	0	0	0
1809	225381	20271	0	4514	2850	638	15	12676	5101	0	37	4000	6861	1160	0	0	1418
1810	179566	72686	6000	2497	25921	2344	27	26405	0	0	62	3321	10000	2500	3295	160	

**ARRIVALS at and DEPARTURES from QUEBEC.**

Year.	No. of Vessels.	Tonnage.	No. of Men.	No. Vessels.	Tonnage.
1808	334	70275	3390	13	3638
1809	494	87825	4174	14	3193
1810	661	143893	6378	96	5836

Quebec, 2d March, 1811.

IRVINE, MACNAUGHT & Co.

